

V&V Reference Report

L2 ASCDS Version : 8.4.5

Observation 2029 - L2 Version 3
Chandra X-Ray Center

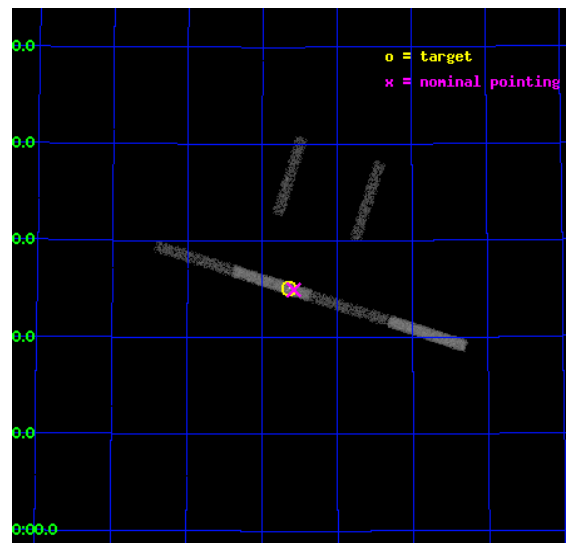
L2 Processing Date : Sep 18 2012

Contents

1	Front	2
2	OBI	3
2.1	OBI	3
2.1.1	Images	3
2.1.2	Bias	3
2.1.3	Parameters	4
2.1.4	Events	4
2.2	Compared Parameters	5
2.3	Aspect	6
2.4	Star Slots	9
2.4.1	Slot 3	9
2.4.2	Slot 4	10
2.4.3	Slot 5	11
2.4.4	Slot 6	12
2.4.5	Slot 7	13
2.5	FID Slots	14
2.5.1	Slot 0	14
2.5.2	Slot 1	15
2.5.3	Slot 2	16
A	Summary	17
A.1	Status	17
A.2	Comments	17

1 Front

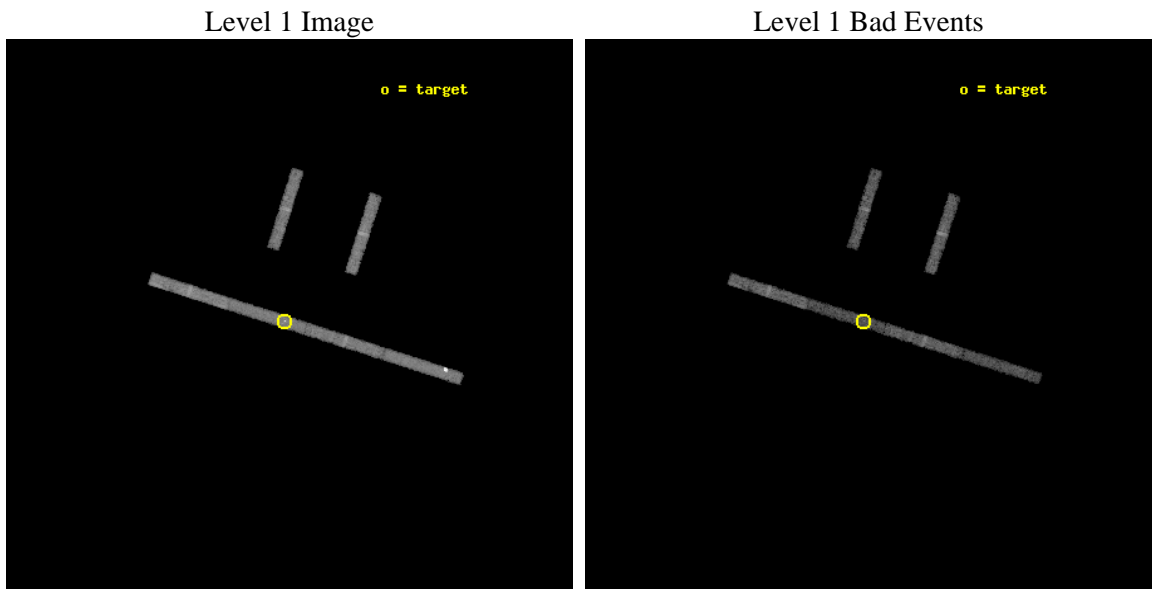
seq_num	600163	Sequence number
obs_id	2029	Observation id
title	PROBING THE NATURE OF SUPER-LUMINOUS X-RAY SOURCES IN NEARBY GALAXIES	Proposal title
observer	Dr Timothy Roberts	Principal investigator
object	NGC 5204 X-1	Source name
dtcycle	0	
cycle	P	events from which exps? Prim/Second/Both
ra_targ	202.413333	Observer's specified target RA [deg]
dec_targ	58.416944	Observer's specified target Dec [deg]
ra_nom	202.39491583266	Nominal RA [deg]
dec_nom	58.415639761839	Nominal Dec [deg]
roll_nom	197.68577001768	Nominal Roll [deg]
revision	3	Processing version of data
ontime	9547.3000406325	Sum of GTIs [s]
livetime	9018.5550421606	Livetime [s]
ontime2	9547.3000406325	Sum of GTIs [s]
ontime3	9547.3000406325	Sum of GTIs [s]
ontime5	9547.3000406325	Sum of GTIs [s]
ontime6	9547.3000406325	Sum of GTIs [s]
ontime7	9547.3000406325	Sum of GTIs [s]
ontime8	9547.3000406325	Sum of GTIs [s]
l2events	14617	Number of level 2 events



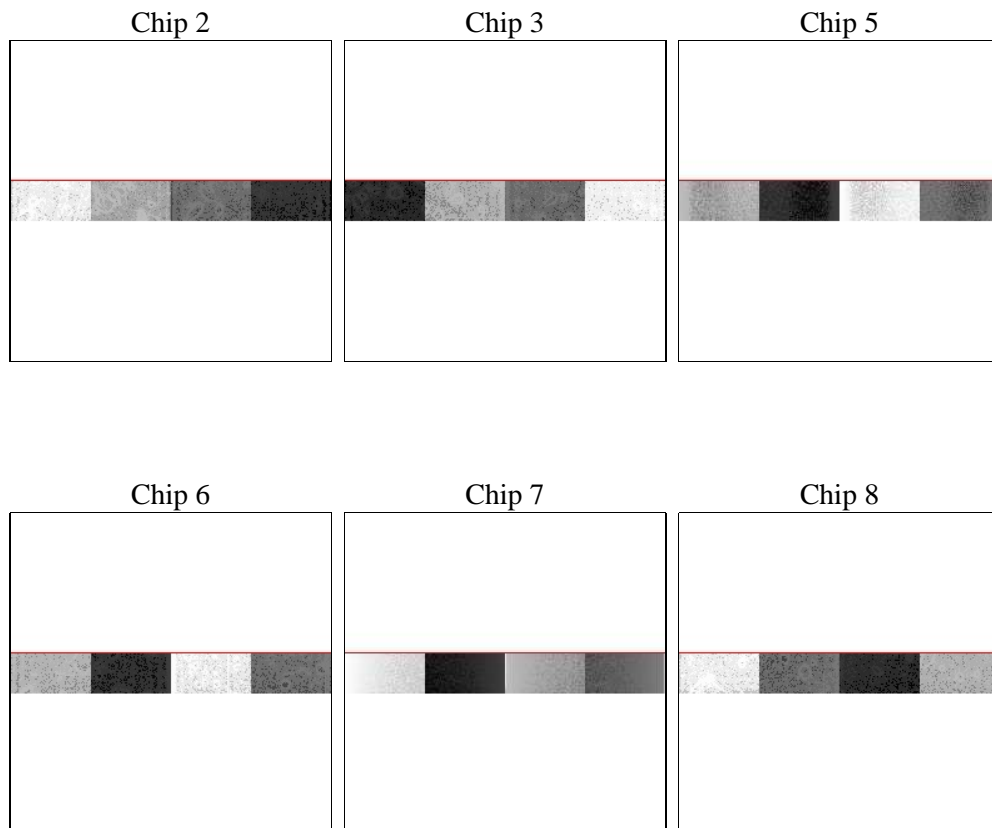
2 OBI

2.1 OBI

2.1.1 Images



2.1.2 Bias



2.1.3 Parameters

obi_num	1	Obi number	sched_exp_time	9400.000000	[s] Scheduled observation exposure time
ascdsver	8.4.5	Processing system revision	ontime	9547.3000406325	Sum of GTIs [s]
caldsver	4.5.1.1	 	ontime2	9547.3000406325	Sum of GTIs [s]
date	2012-09-18T22:28:24	Date and time of file creation	ontime3	9547.3000406325	Sum of GTIs [s]
revision	3	Processing version of data	ontime5	9547.3000406325	Sum of GTIs [s]
			ontime6	9547.3000406325	Sum of GTIs [s]
			ontime7	9547.3000406325	Sum of GTIs [s]
			ontime8	9547.3000406325	Sum of GTIs [s]
			l1events	89302	Number of level 1 events

2.1.4 Events

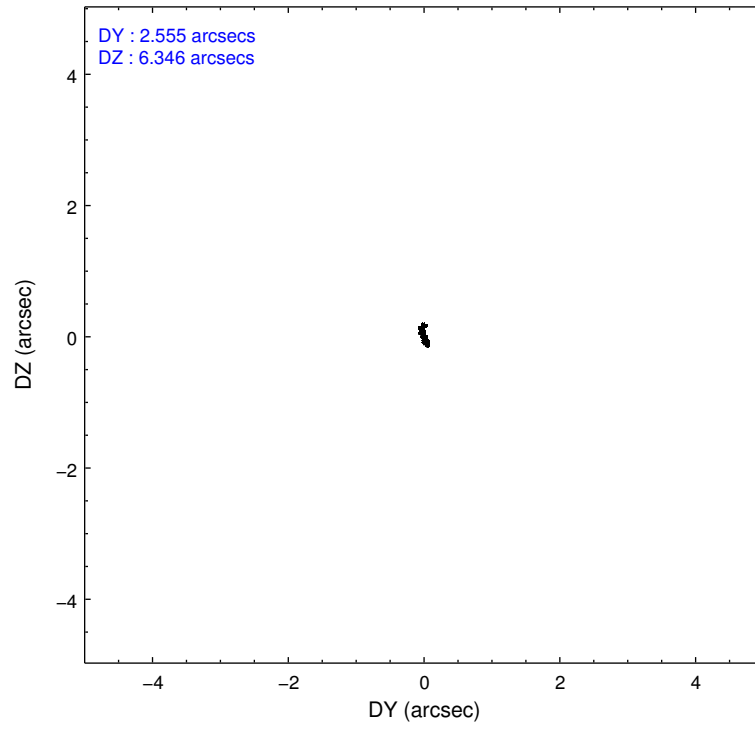
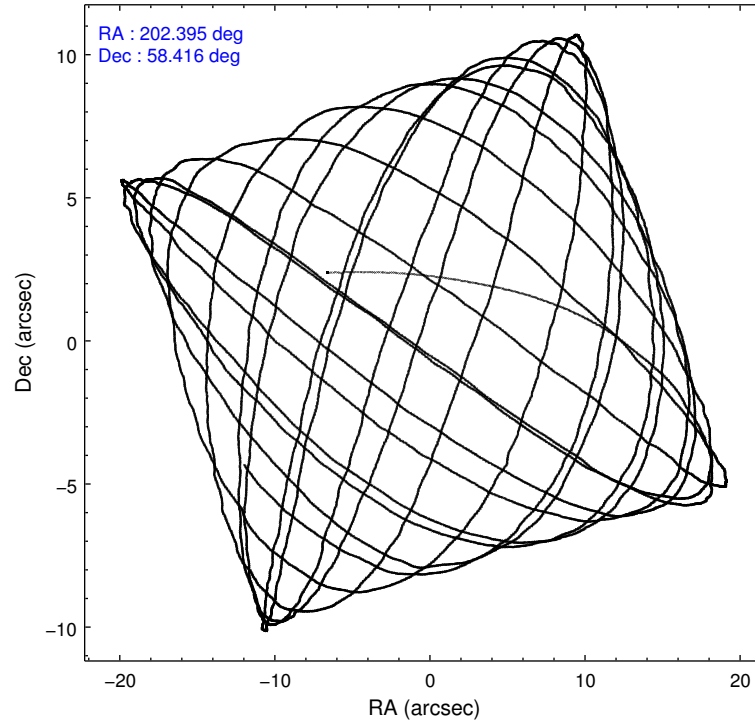
	ccd 2	ccd 3	ccd 5	ccd 6	ccd 7	ccd 8
level 1 events	12821	11066	24478	11682	13022	16233
rejected events	11675	9981	7544	10525	6867	13363
rejected %	91%	90%	30%	90%	52%	82%

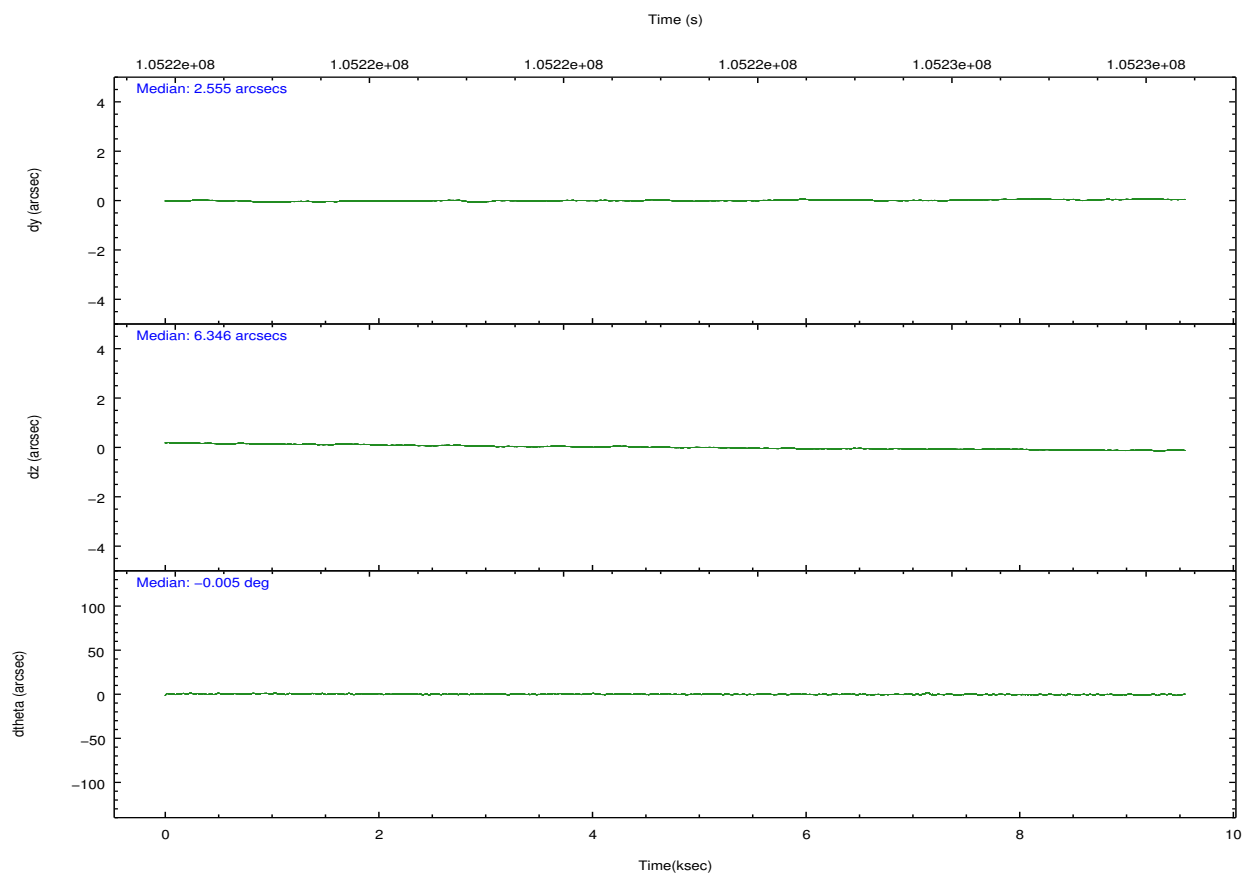
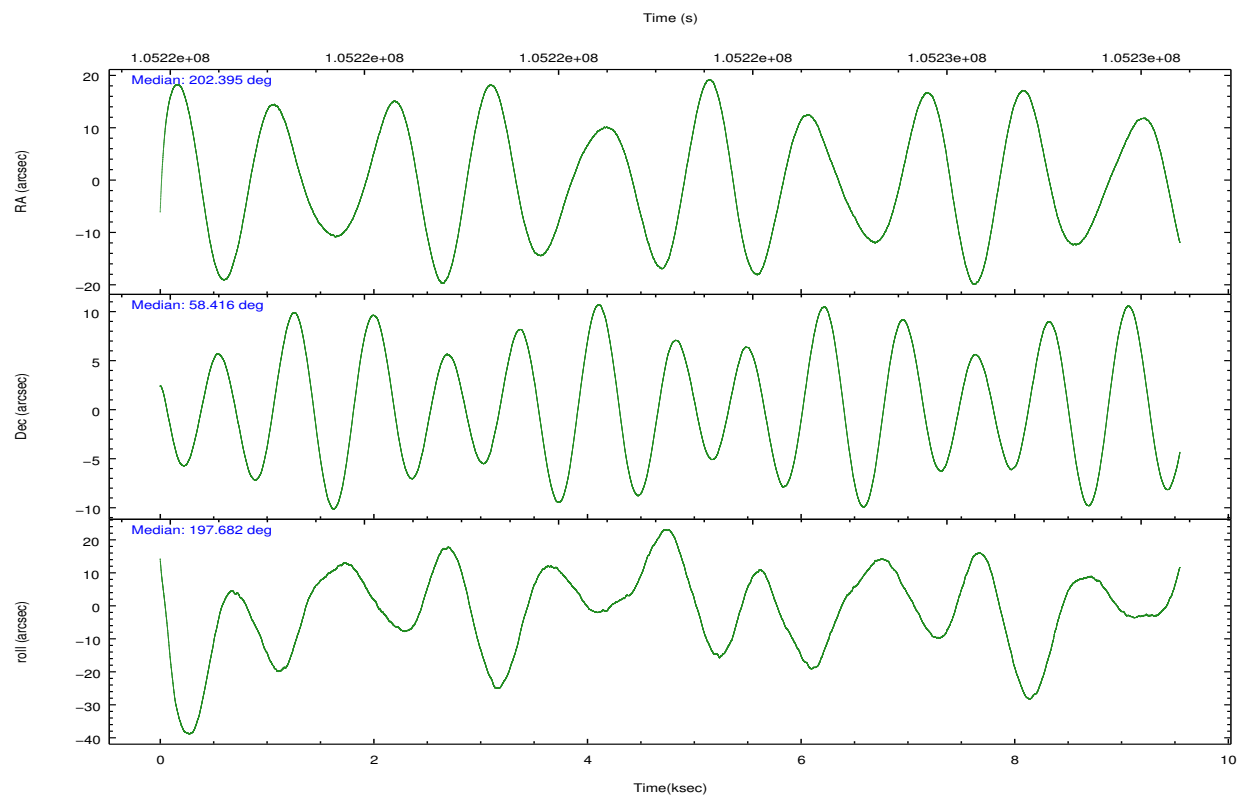
	ccd 2	ccd 3	ccd 5	ccd 6	ccd 7	ccd 8
grade 0 events	402	422	11783	408	1142	650
	3%	3%	48%	3%	8%	4%
grade 1 events	2	3	19	0	16	8
	0%	0%	0%	0%	0%	0%
grade 2 events	222	150	2672	200	1375	617
	1%	1%	10%	1%	10%	3%
grade 3 events	183	206	450	182	760	354
	1%	1%	1%	1%	5%	2%
grade 4 events	179	182	413	227	725	279
	1%	1%	1%	1%	5%	1%
grade 5 events	319	301	1055	344	1109	420
	2%	2%	4%	2%	8%	2%
grade 6 events	226	187	2601	199	2490	1071
	1%	1%	10%	1%	19%	6%
grade 7 events	11288	9615	5485	10122	5405	12834
	88%	86%	22%	86%	41%	79%

2.2 Compared Parameters

Parameter	Planned	Actual	Parameter	Planned	Actual
Instrument	ACIS	ACIS	Obspar format version number	7	7
Detector	ACIS-235678	ACIS-235678	Obspar file type	PREDICTED	ACTUAL
Grating	NONE	NONE	Obspar update status	NONE	UPDATED
Data mode	FAINT	FAINT	Number of optional ACIS chips dropped	0	0
Observation mode	POINTING	POINTING	On-chip summing requested	N	N
[deg] Pointing RA	202.429518	202.3949158326648	Subarray requested	CUSTOM	1/8
[deg] Pointing Dec	58.436051	58.41563976183939	Subarray start row	449	449
[deg] Pointing Roll	197.499631	197.6857700176834	Subarray row count	128	128
[mm] SIM focus pos	-0.684267	-0.6828225247311905	Alternating exposures requested	N	N
[mm] SIM defocus	0	0.001444936568705701	[s] Primary exposure time	0.000000	0.7
[mm] SIM translation stage pos	-190.132523	-190.1400660498719			
[mm] SIM translation stage offset	0	0.00754346686406393			
[s] Observation start time (MET)	105218522.184000	105217465.74501			
Observation start date	2001-05-02T19:20:58	2001-05-02T19:04:25			
[s] Observation end time (MET)	105227922.184000	105228522.93294			
Observation end date	2001-05-02T21:57:38	2001-05-02T22:08:42			
Read mode	TIMED	TIMED			

2.3 Aspect



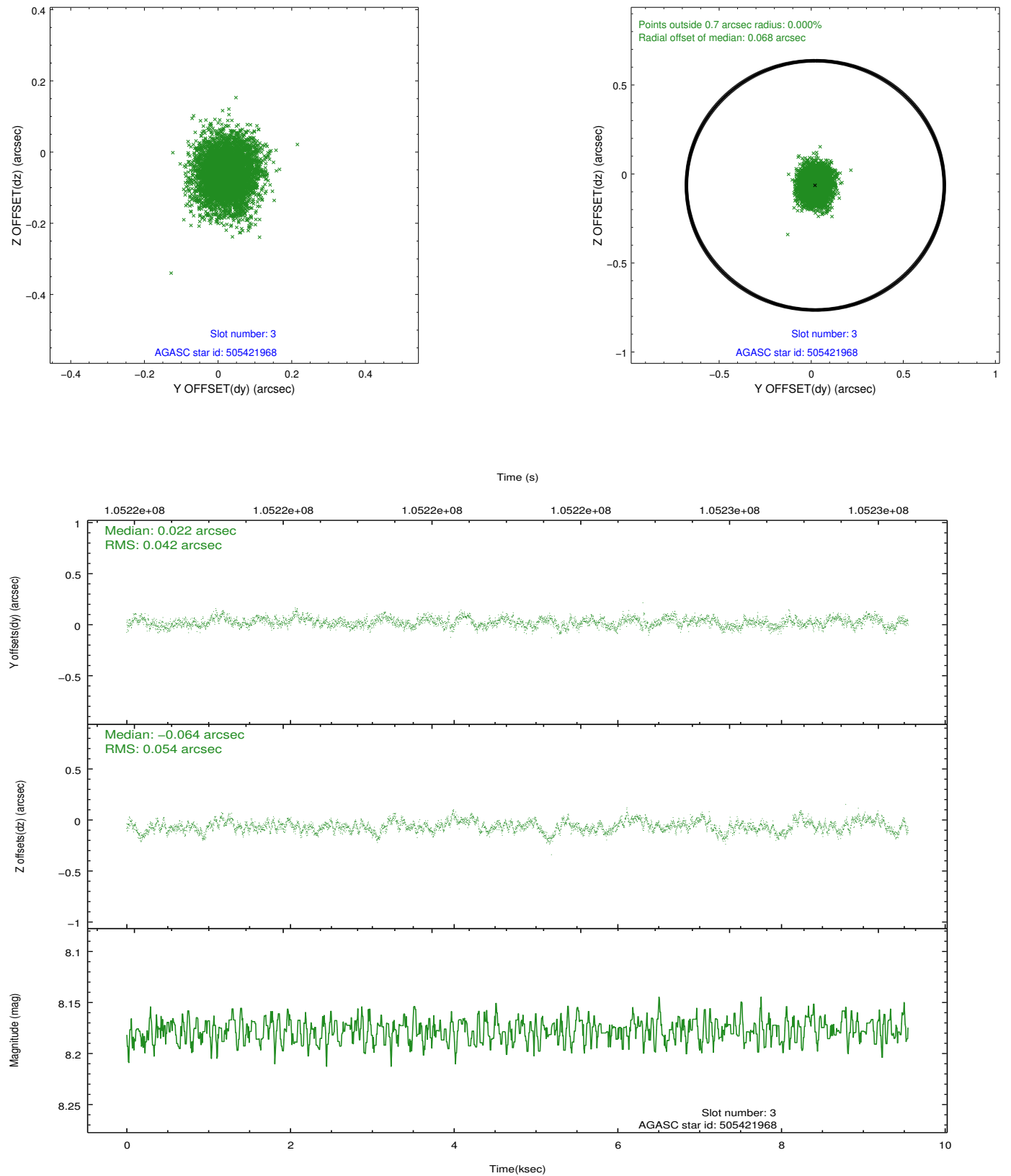


Slot Statistics

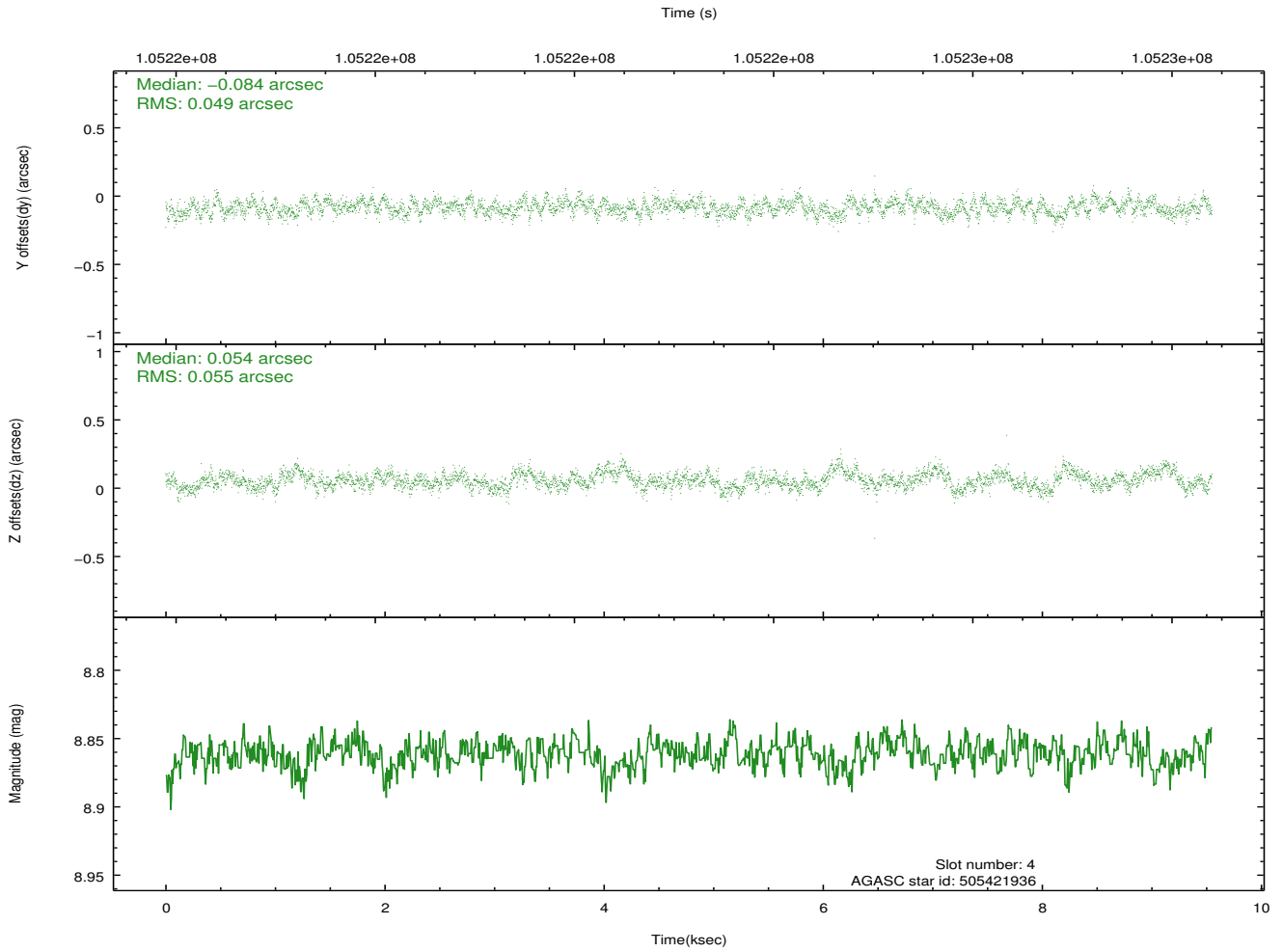
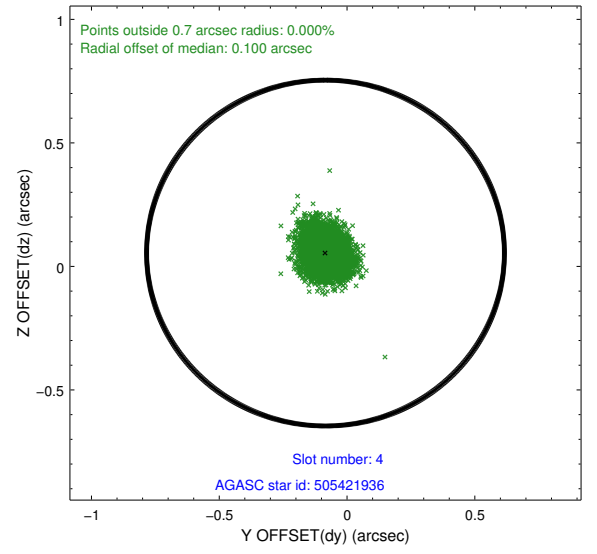
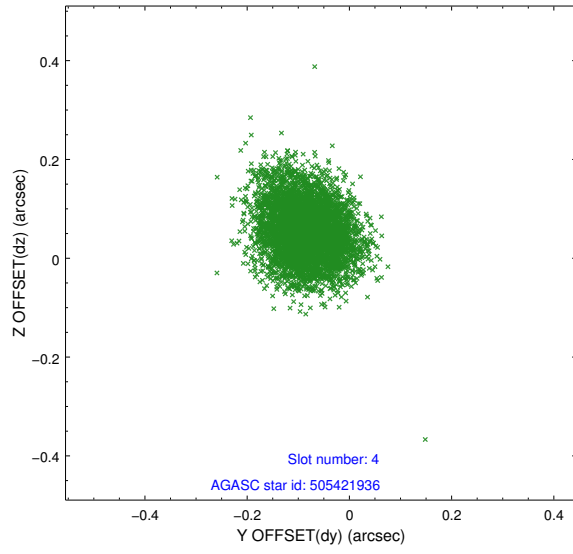
slot	status	id	mag	n_pts	med_dy	med_dz	dr1	dr2	ra	dec	mean_y	mean_z
0	FID	ACIS-S-2	7.12	2329	-0.031	-0.003	0.007	0.011	0.000000	0.000000	-755.19	-1727.52
1	FID	ACIS-S-4	7.20	2328	-0.030	0.016	0.006	0.011	0.000000	0.000000	2157.80	180.45
2	FID	ACIS-S-5	7.24	2327	0.030	-0.004	0.007	0.011	0.000000	0.000000	-1807.28	174.68
3	GUIDE	505421968	8.18	4658	0.022	-0.064	0.072	0.118	202.022601	58.209270	980.65	544.14
4	GUIDE	505421936	8.86	4655	-0.084	0.054	0.078	0.126	201.854843	57.887820	1640.79	1547.24
5	GUIDE	505418080	9.06	4652	-0.024	-0.016	0.095	0.149	201.533017	58.898788	1086.00	-2100.51
6	GUIDE	505422504	10.08	4648	0.076	-0.099	0.198	0.313	202.156173	59.054723	-187.14	-2278.05
7	GUIDE	505414952	9.99	4652	0.001	0.121	0.133	0.246	203.527988	58.651569	-2200.56	-138.11

2.4 Star Slots

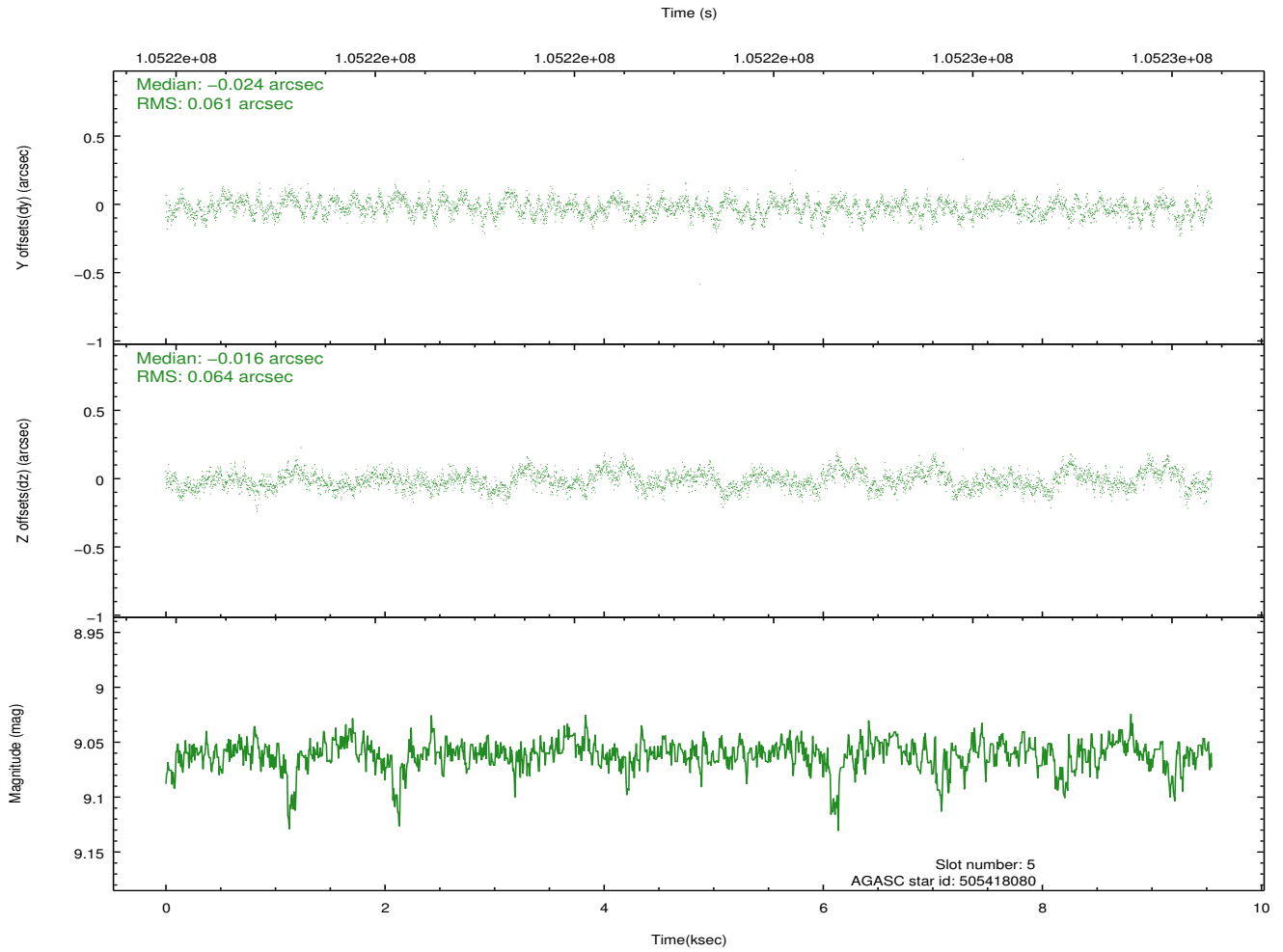
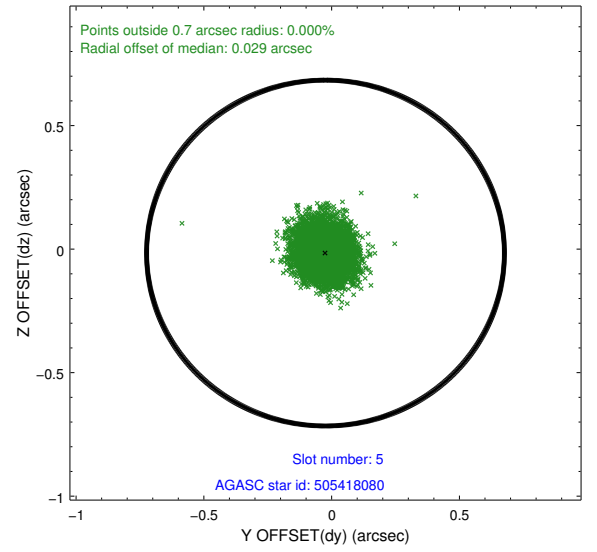
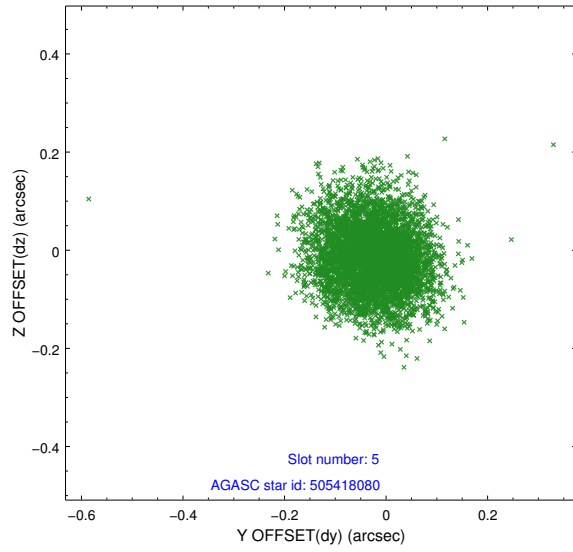
2.4.1 Slot 3



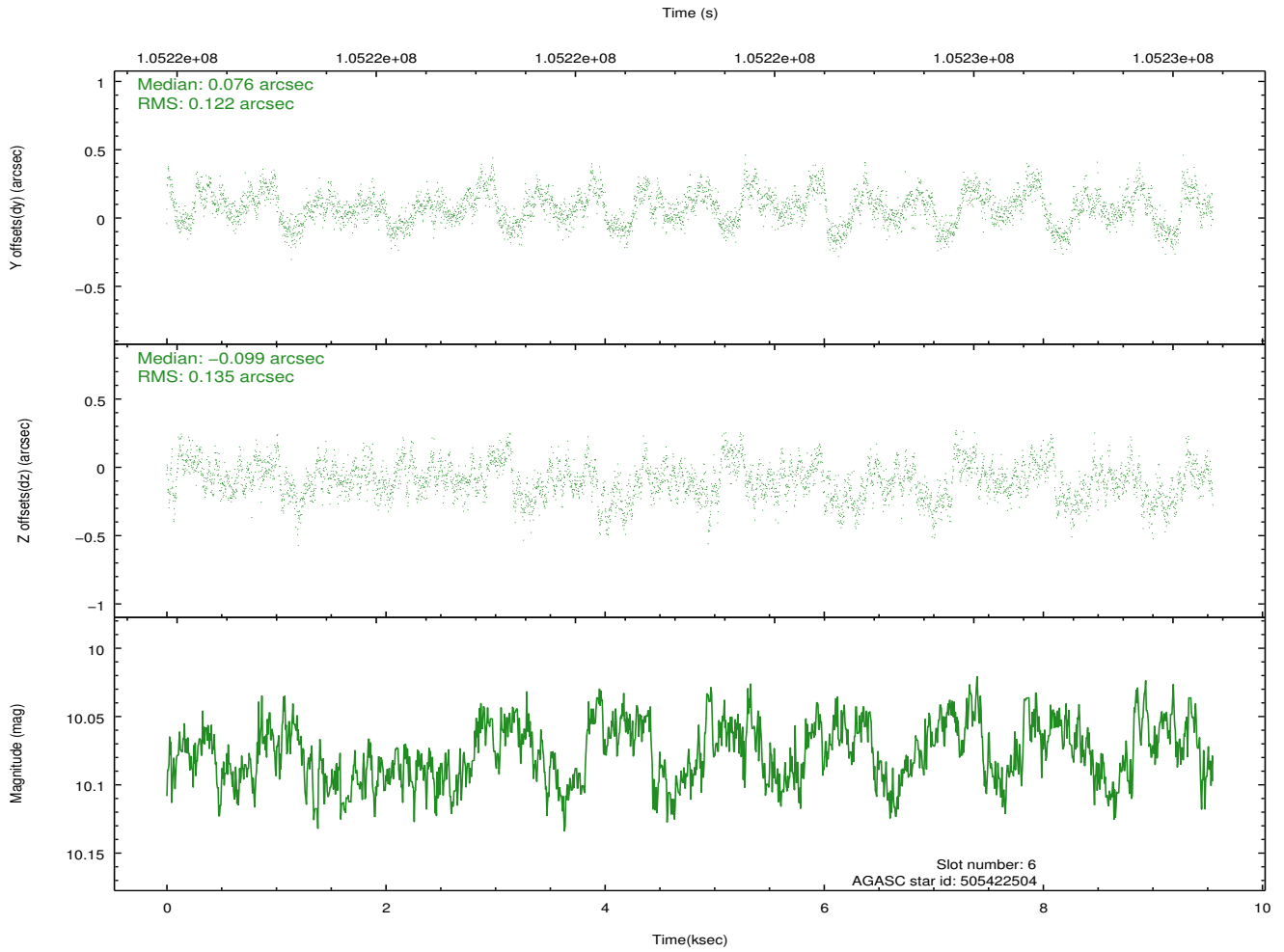
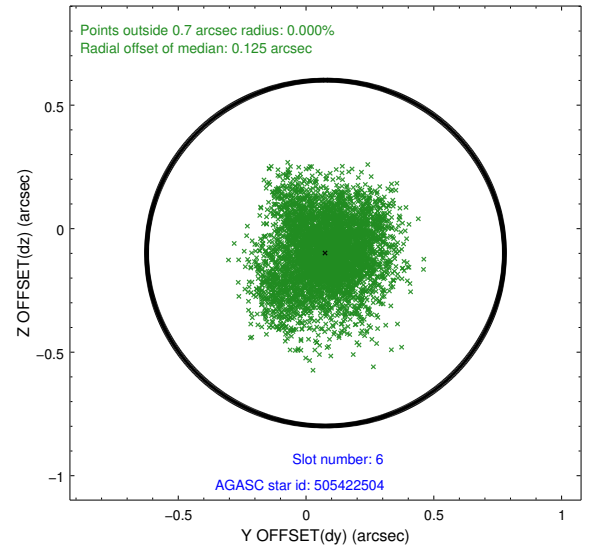
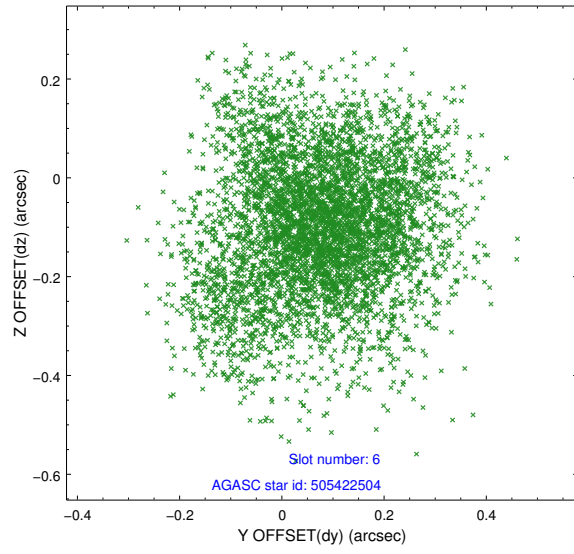
2.4.2 Slot 4



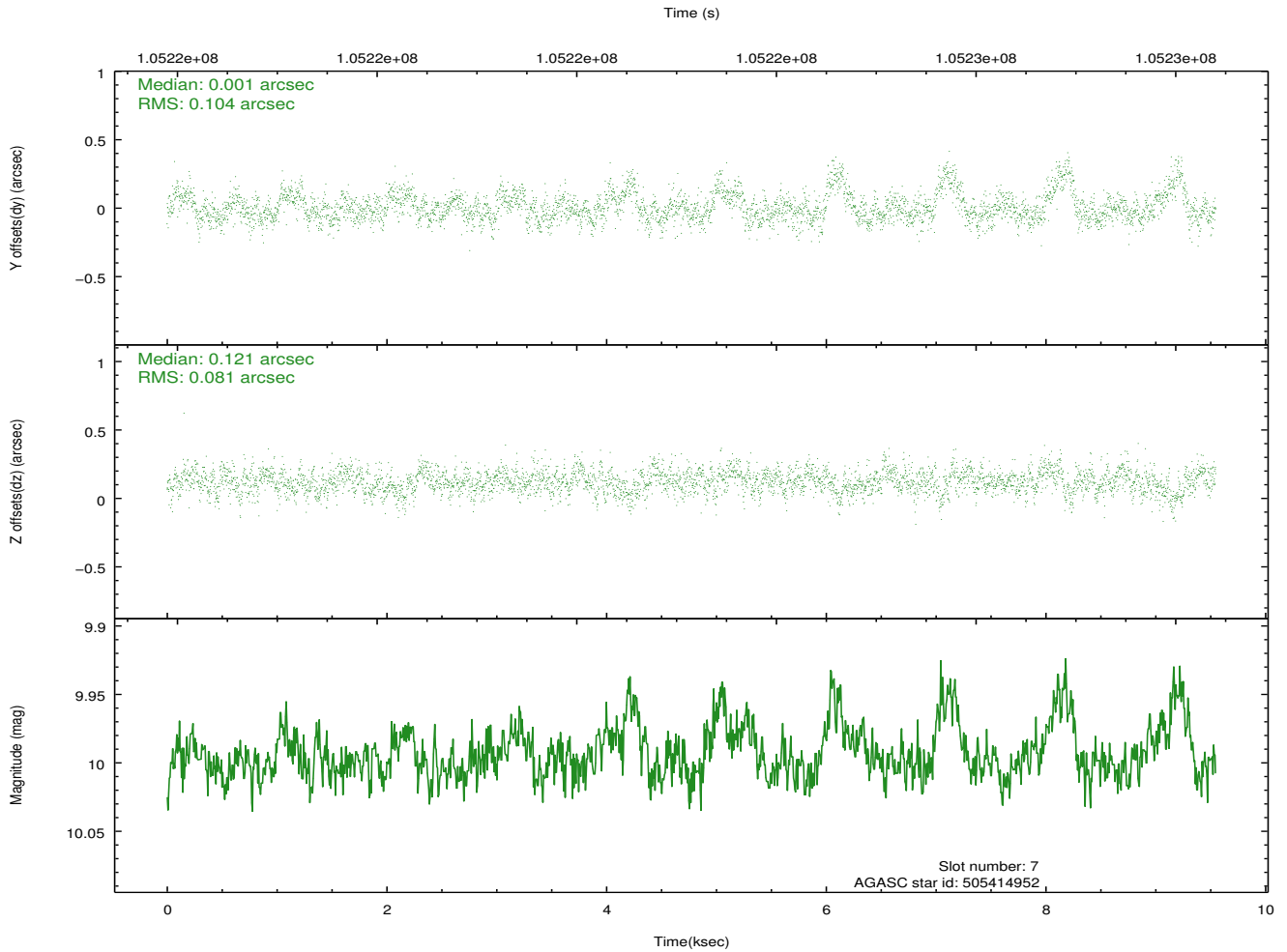
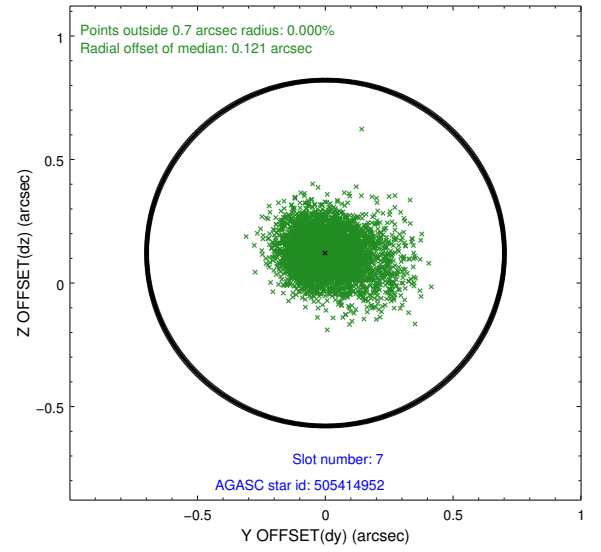
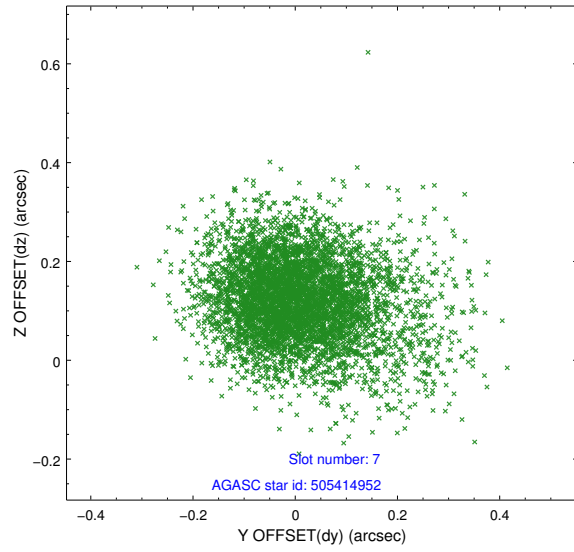
2.4.3 Slot 5



2.4.4 Slot 6

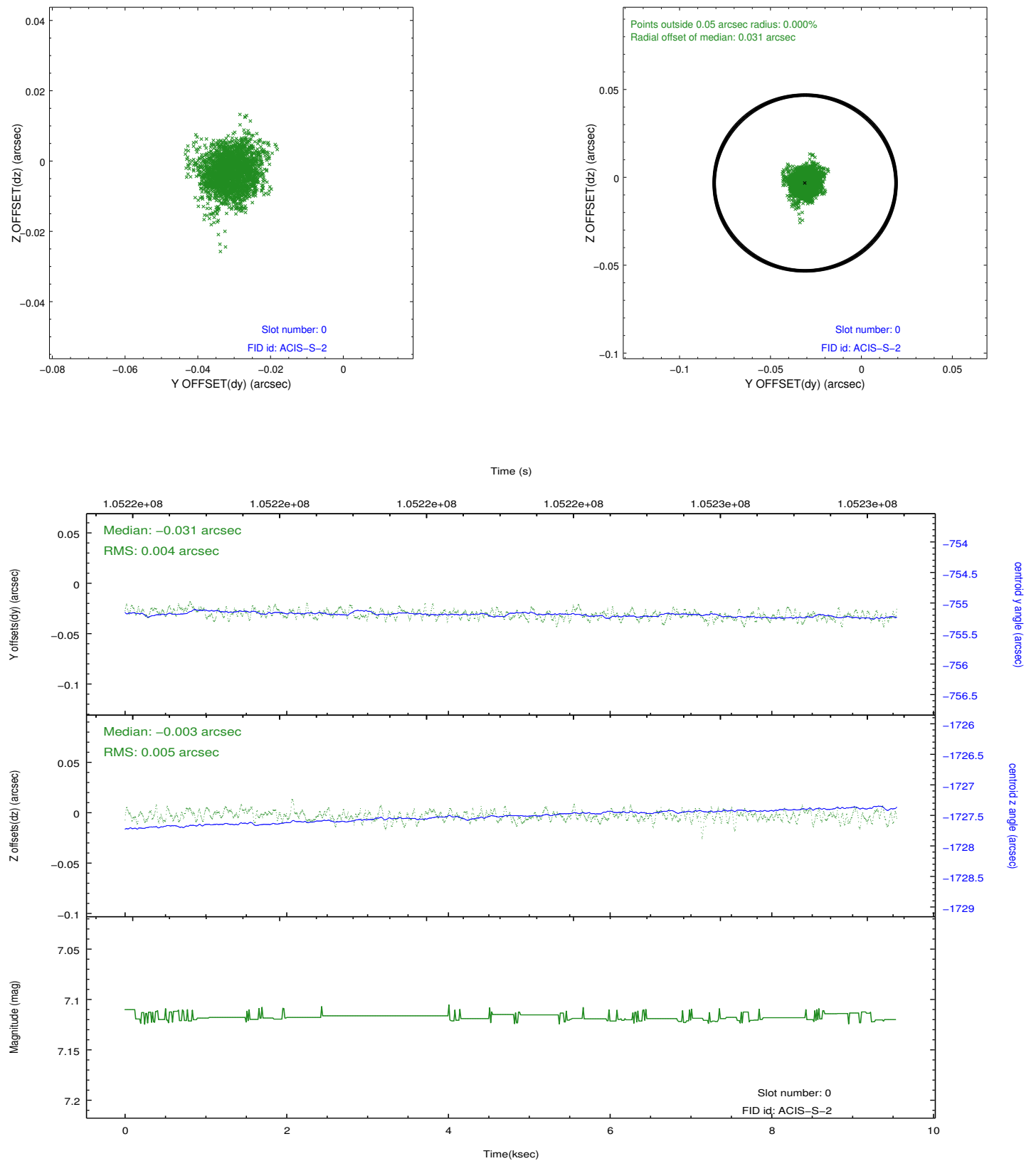


2.4.5 Slot 7

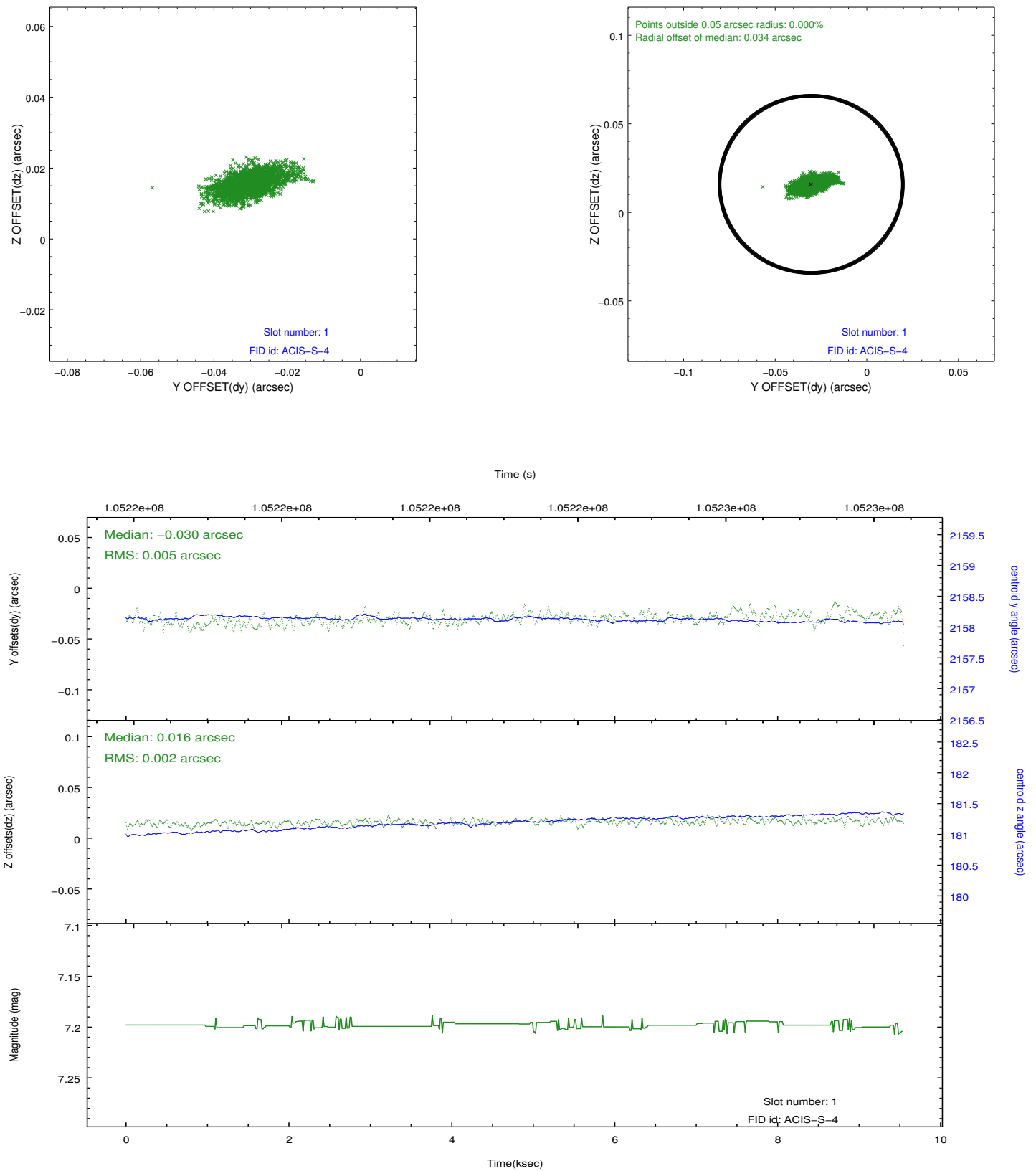


2.5 FID Slots

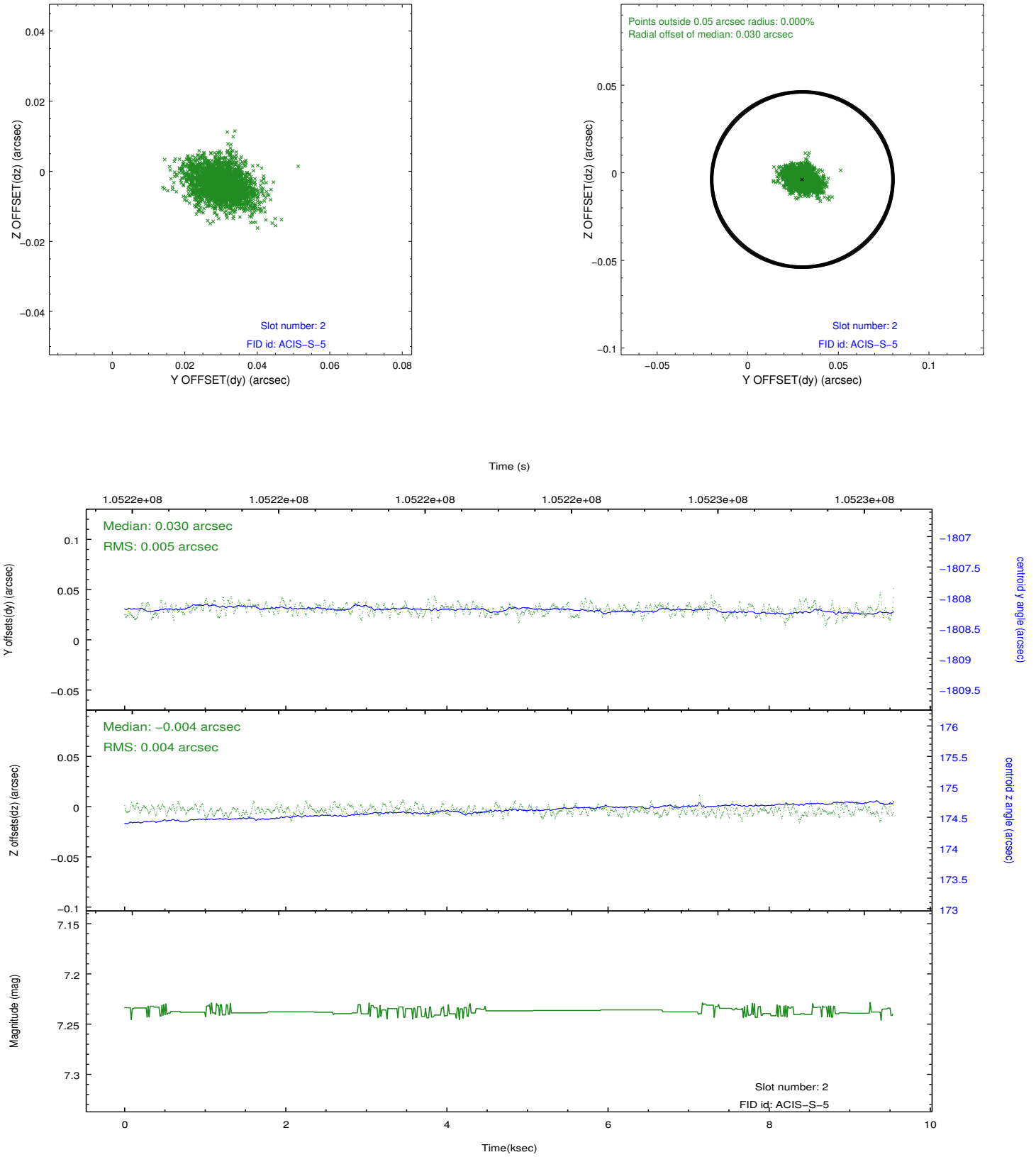
2.5.1 Slot 0



2.5.2 Slot 1



2.5.3 Slot 2



A Summary

A.1 Status

V&V Scientist	Jen Lauer
V&V Date (YYYY-MM-DD)	2012.09.20
V&V Edition	1
V&V Disposition and Status	OK
V&V Charge Time	9.547

A.2 Comments

Monitor constraint met.