

V&V Reference Report

L2 ASCDS Version : 8.4.5

Observation 2028 - L2 Version 5
Chandra X-Ray Center

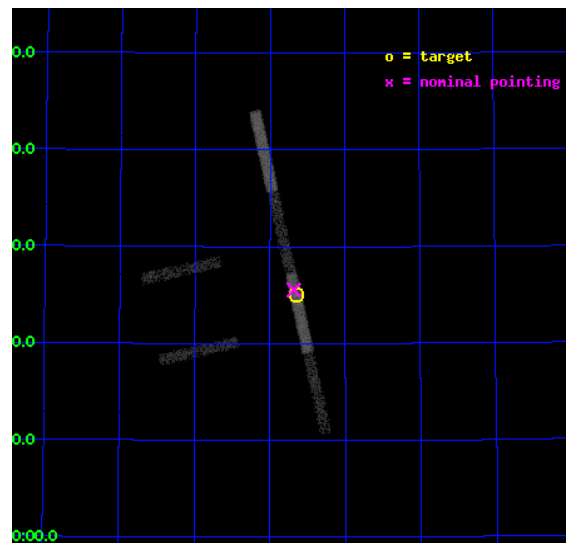
L2 Processing Date : Sep 20 2012

Contents

1	Front	2
2	OBI	3
2.1	OBI	3
2.1.1	Images	3
2.1.2	Bias	3
2.1.3	Parameters	4
2.1.4	Events	4
2.2	Compared Parameters	5
2.3	Aspect	6
2.4	Star Slots	9
2.4.1	Slot 3	9
2.4.2	Slot 4	10
2.4.3	Slot 5	11
2.4.4	Slot 6	12
2.5	FID Slots	13
2.5.1	Slot 0	13
2.5.2	Slot 1	14
2.5.3	Slot 2	15
A	Summary	16
A.1	Status	16
A.2	Comments	16

1 Front

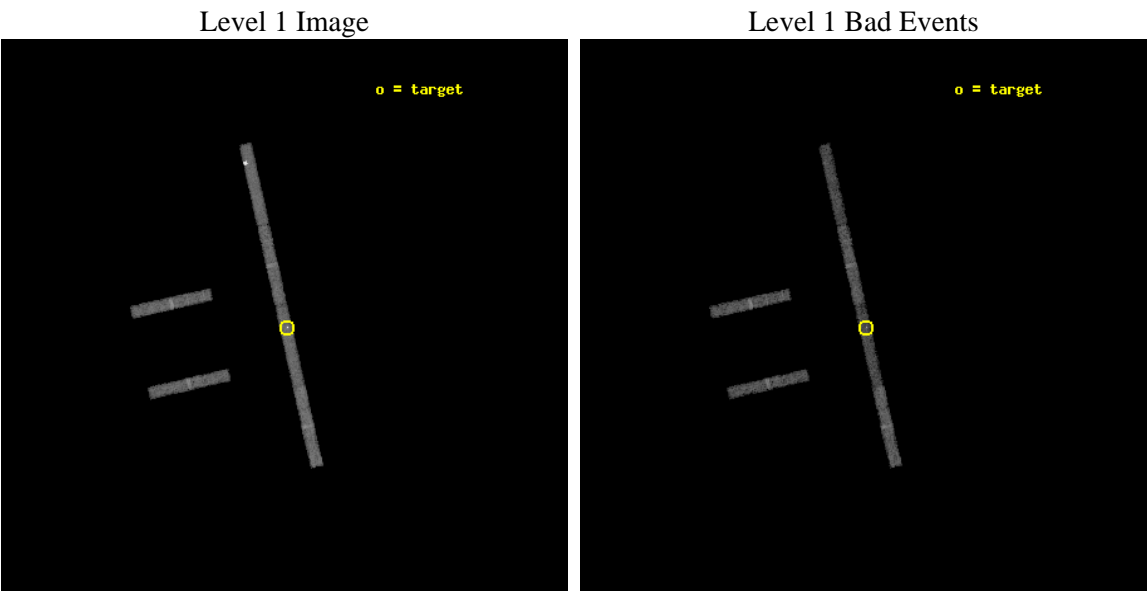
seq_num	600162	Sequence number
obs_id	2028	Observation id
title	PROBING THE NATURE OF SUPER-LUMINOUS X-RAY SOURCES IN NEARBY GALAXIES	Proposal title
observer	Dr Timothy Roberts	Principal investigator
object	NGC 5204 X-1	Source name
dtcycle	0	
cycle	P	events from which exps? Prim/Second/Both
ra_targ	202.413333	Observer's specified target RA [deg]
dec_targ	58.416944	Observer's specified target Dec [deg]
ra_nom	202.42070969497	Nominal RA [deg]
dec_nom	58.425990790805	Nominal Dec [deg]
roll_nom	77.325686282214	Nominal Roll [deg]
revision	5	Processing version of data
ontime	10145.800043181	Sum of GTIs [s]
livetime	9583.9091415125	Livetime [s]
ontime2	10145.800043181	Sum of GTIs [s]
ontime3	10145.800043181	Sum of GTIs [s]
ontime5	10145.800043181	Sum of GTIs [s]
ontime6	10145.800043181	Sum of GTIs [s]
ontime7	10145.800043181	Sum of GTIs [s]
ontime8	10145.800043181	Sum of GTIs [s]
l2events	18005	Number of level 2 events



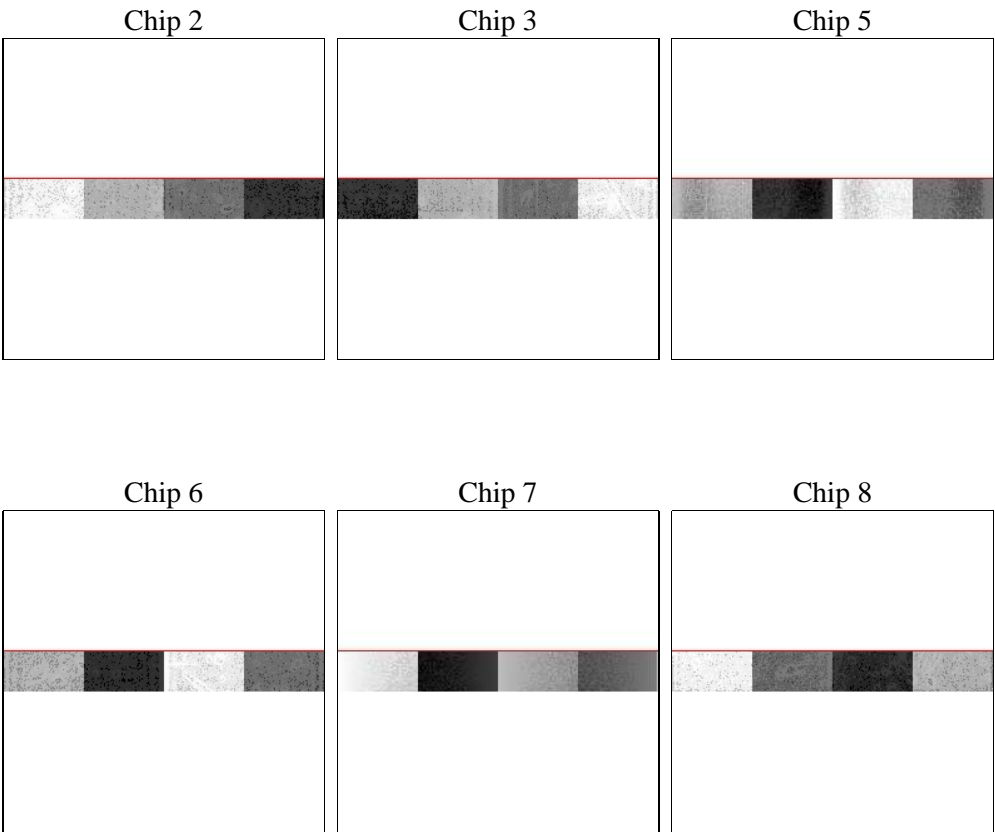
2 OBI

2.1 OBI

2.1.1 Images



2.1.2 Bias



Chip 6



Chip 7



Chip 8



2.1.3 Parameters

obi_num	0	Obi number	sched_exp_time	10000.000000	[s] Scheduled observation exposure time
ascdsver	8.4.5	Processing system revision	ontime	10145.800043181	Sum of GTIs [s]
caldsver	4.5.1.1	 	ontime2	10145.800043181	Sum of GTIs [s]
date	2012-09-20T13:41:58	Date and time of file creation	ontime3	10145.800043181	Sum of GTIs [s]
revision	5	Processing version of data	ontime5	10145.800043181	Sum of GTIs [s]
			ontime6	10145.800043181	Sum of GTIs [s]
			ontime7	10145.800043181	Sum of GTIs [s]
			ontime8	10145.800043181	Sum of GTIs [s]
			l1events	100619	Number of level 1 events

2.1.4 Events

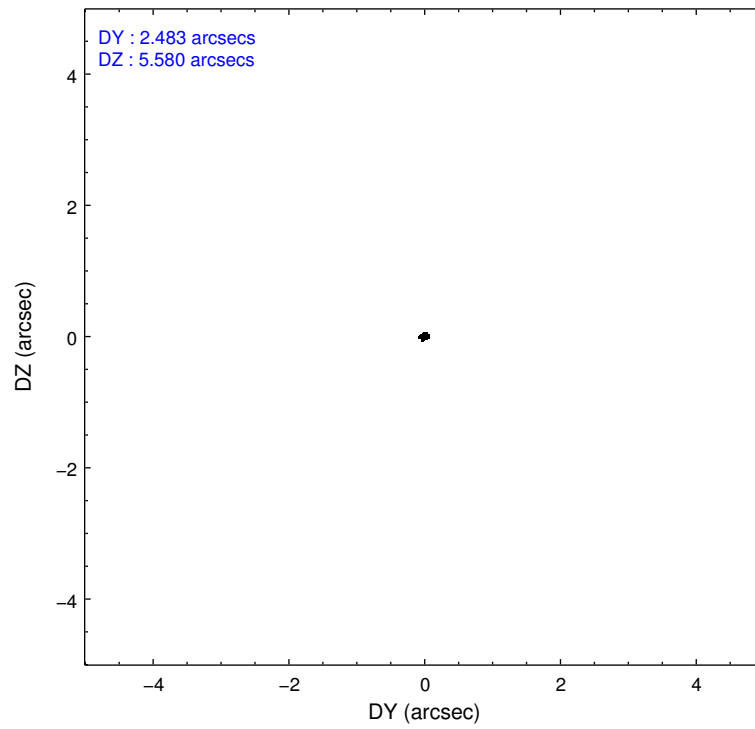
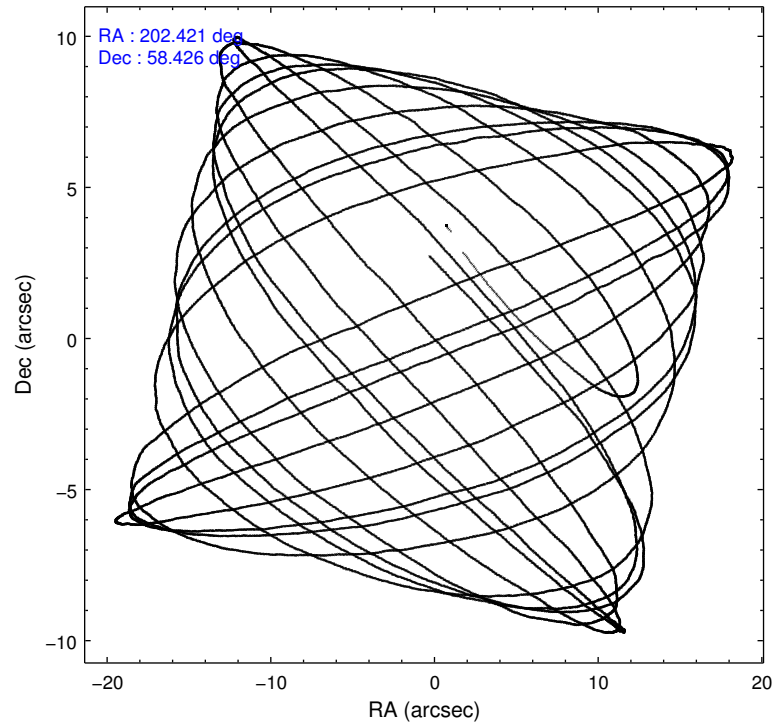
	ccd 2	ccd 3	ccd 5	ccd 6	ccd 7	ccd 8
level 1 events	13643	11881	28173	12895	17473	16554
rejected events	12579	10796	9239	11723	7954	14278
rejected %	92%	90%	32%	90%	45%	86%

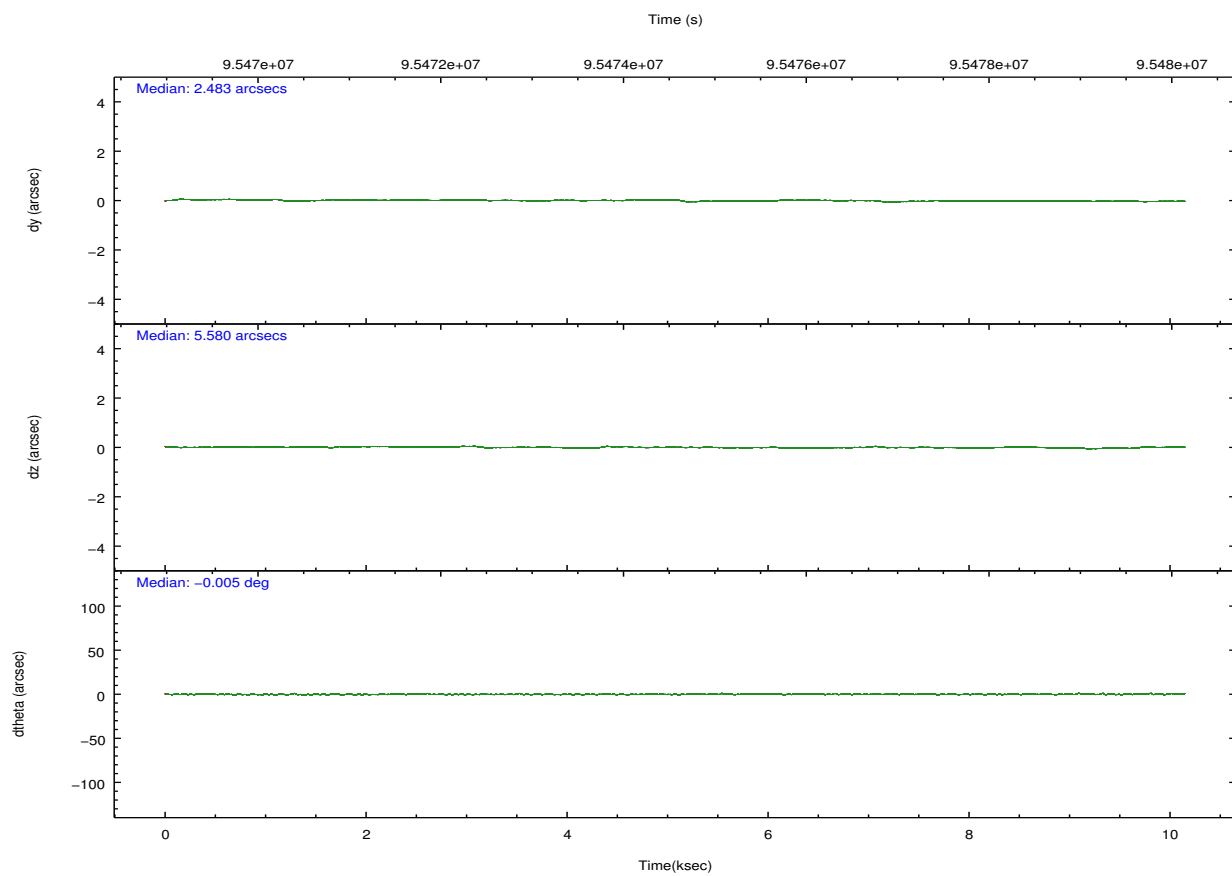
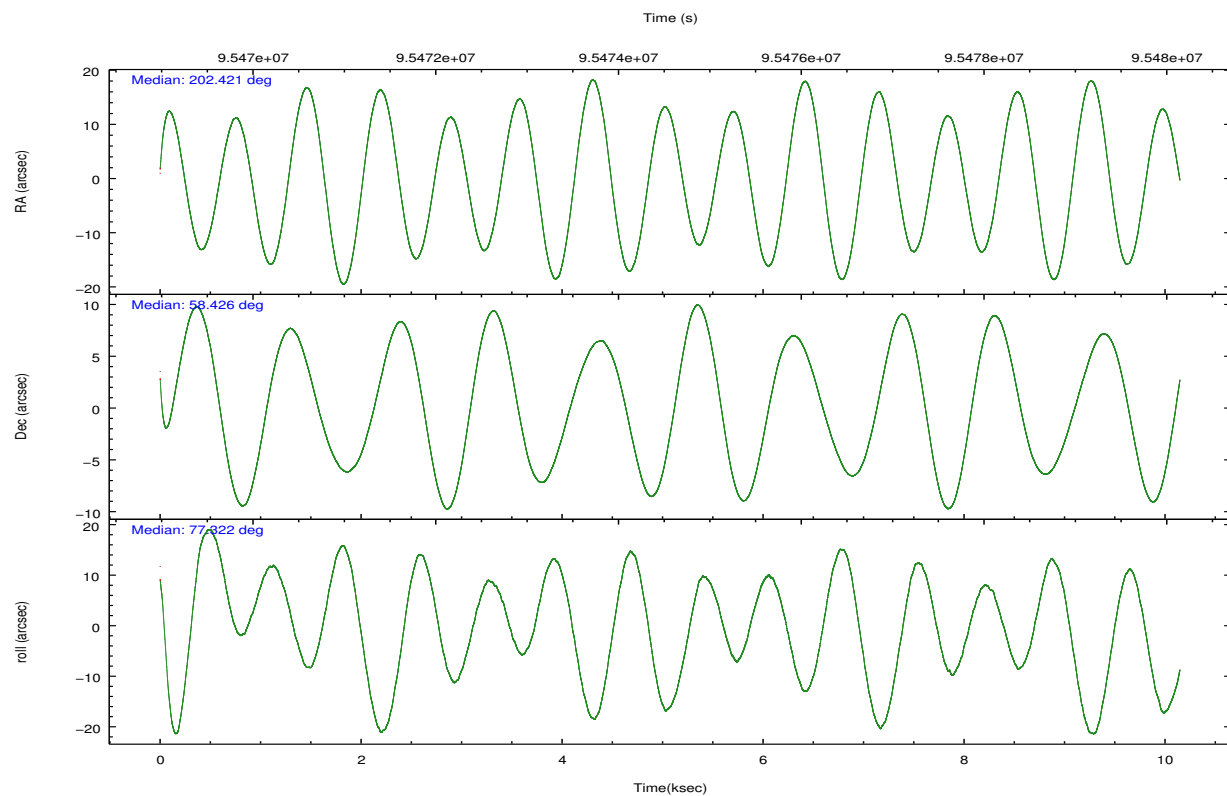
	ccd 2	ccd 3	ccd 5	ccd 6	ccd 7	ccd 8
grade 0 events	396	411	9447	478	2079	722
	2%	3%	33%	3%	11%	4%
grade 1 events	4	2	68	1	41	4
	0%	0%	0%	0%	0%	0%
grade 2 events	192	198	7667	187	2356	408
	1%	1%	27%	1%	13%	2%
grade 3 events	215	213	455	222	1175	394
	1%	1%	1%	1%	6%	2%
grade 4 events	211	197	653	217	1146	357
	1%	1%	2%	1%	6%	2%
grade 5 events	320	325	1096	396	1325	451
	2%	2%	3%	3%	7%	2%
grade 6 events	195	200	3026	210	3415	709
	1%	1%	10%	1%	19%	4%
grade 7 events	12110	10335	5761	11184	5936	13509
	88%	86%	20%	86%	33%	81%

2.2 Compared Parameters

Parameter	Planned	Actual	Parameter	Planned	Actual
Instrument	ACIS	ACIS	Obspar format version number	7	7
Detector	ACIS-235678	ACIS-235678	Obspar file type	PREDICTED	ACTUAL
Grating	NONE	NONE	Obspar update status	NONE	UPDATED
Data mode	FAINT	FAINT	Number of optional ACIS chips dropped	0	0
Observation mode	POINTING	POINTING	On-chip summing requested	N	N
[deg] Pointing RA	202.436632	202.4207096949683	Subarray requested	CUSTOM	1/8
[deg] Pointing Dec	58.399971	58.42599079080473	Subarray start row	449	449
[deg] Pointing Roll	77.155460	77.32568628221419	Subarray row count	128	128
[mm] SIM focus pos	-0.684267	-0.6828225247311905	Alternating exposures requested	N	N
[mm] SIM defocus	0	0.001444936568705701	[s] Primary exposure time	0.000000	0.7
[mm] SIM translation stage pos	-190.132523	-190.1400660498719			
[mm] SIM translation stage offset	0	0.00754346686406393			
[s] Observation start time (MET)	95469637.184000	95468186.06843799			
Observation start date	2001-01-09T23:19:33	2001-01-09T22:56:26			
[s] Observation end time (MET)	95479637.184000	95480435.33140799			
Observation end date	2001-01-10T02:06:13	2001-01-10T02:20:35			
Read mode	TIMED	TIMED			

2.3 Aspect



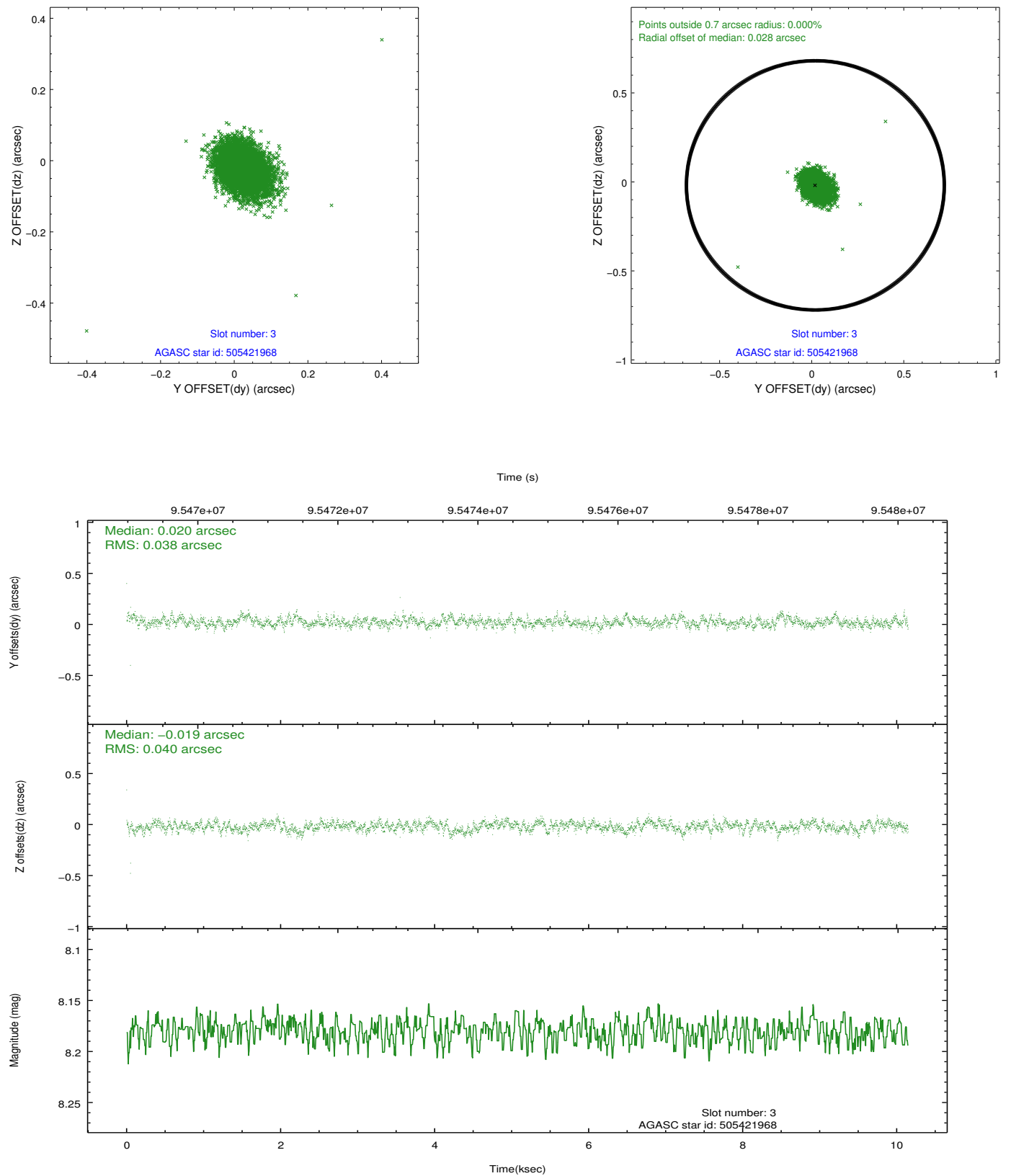


Slot Statistics

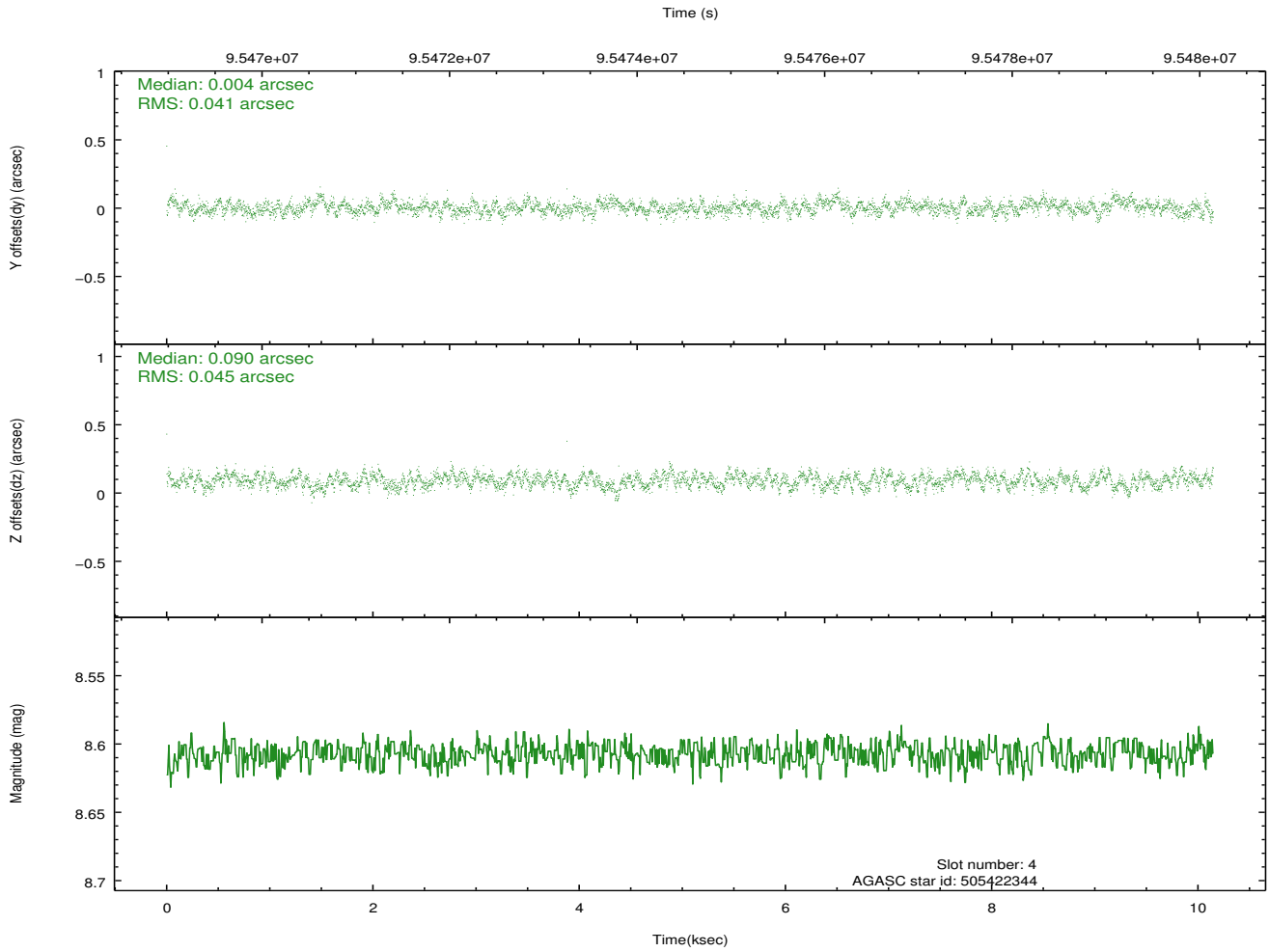
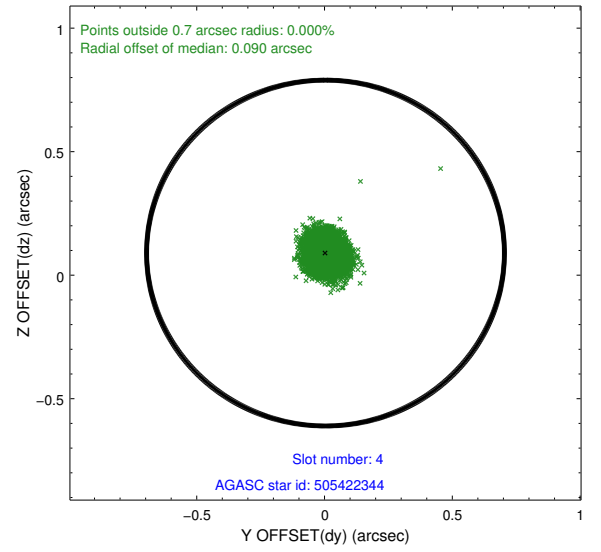
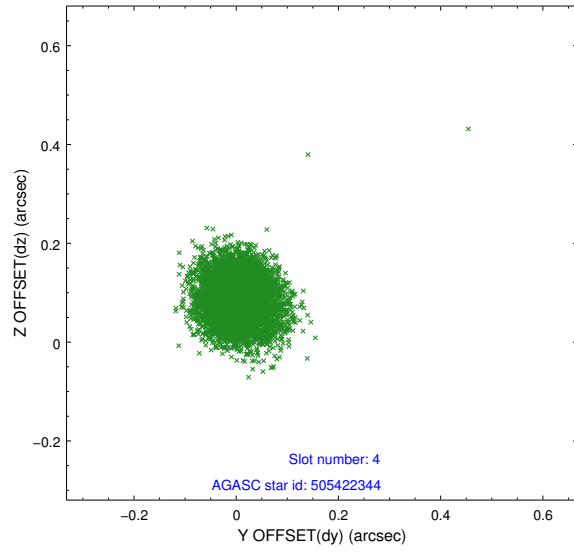
slot	status	id	mag	n_pts	med_dy	med_dz	dr1	dr2	ra	dec	mean_y	mean_z
0	FID	ACIS-S-2	7.11	2476	-0.043	-0.001	0.006	0.010	0.000000	0.000000	-755.12	-1726.72
1	FID	ACIS-S-4	7.21	2476	0.000	0.021	0.005	0.010	0.000000	0.000000	2157.93	181.30
2	FID	ACIS-S-5	7.24	2476	0.012	-0.011	0.006	0.011	0.000000	0.000000	-1807.27	175.46
3	GUIDE	505421968	8.18	4951	0.020	-0.019	0.057	0.094	202.022601	58.209270	-841.54	614.36
4	GUIDE	505422344	8.61	4951	0.004	0.090	0.065	0.102	202.767077	57.846963	-1798.84	-1058.51
5	GUIDE	505421936	8.85	4950	0.116	-0.014	0.077	0.139	201.854843	57.887820	-2040.69	677.28
6	GUIDE	505418080	9.06	4947	-0.137	-0.057	0.077	0.121	201.533017	58.898788	1387.69	2041.12
7	OMITTED		0.00	0	0.000	0.000	0.000	0.000	0.000000	0.000000	0.00	0.00

2.4 Star Slots

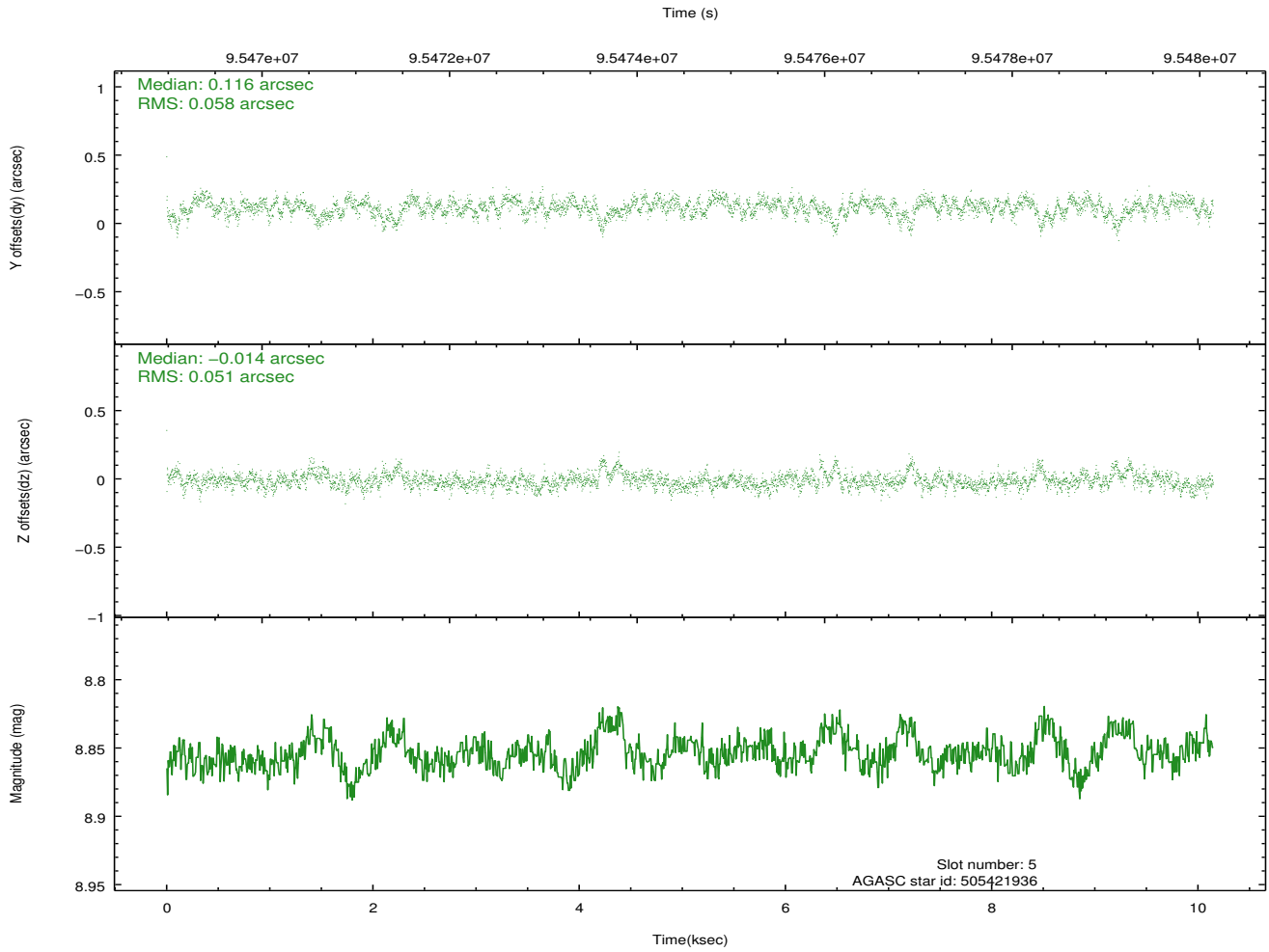
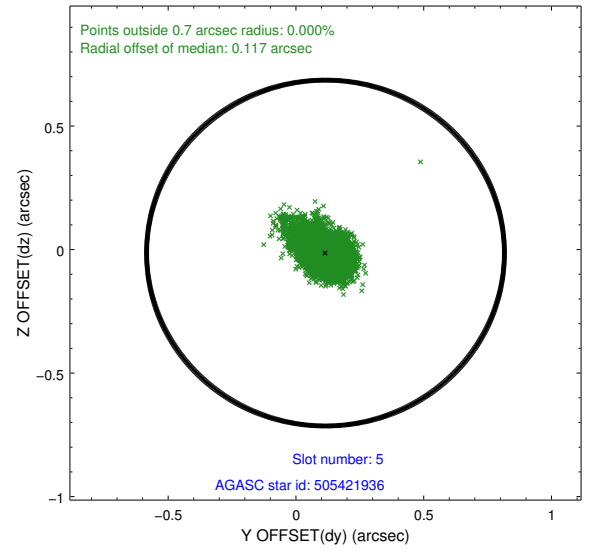
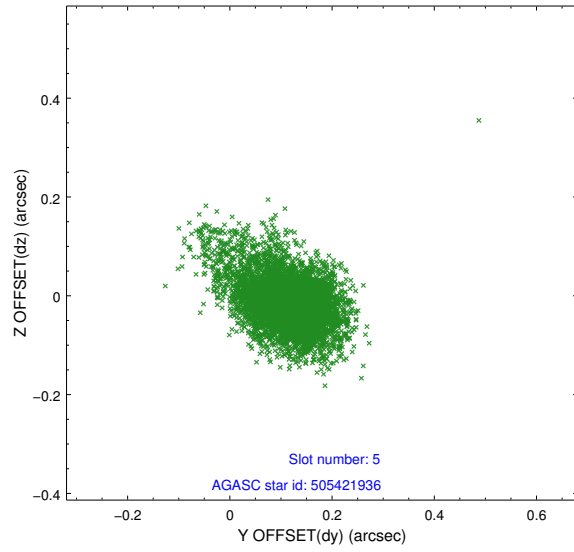
2.4.1 Slot 3



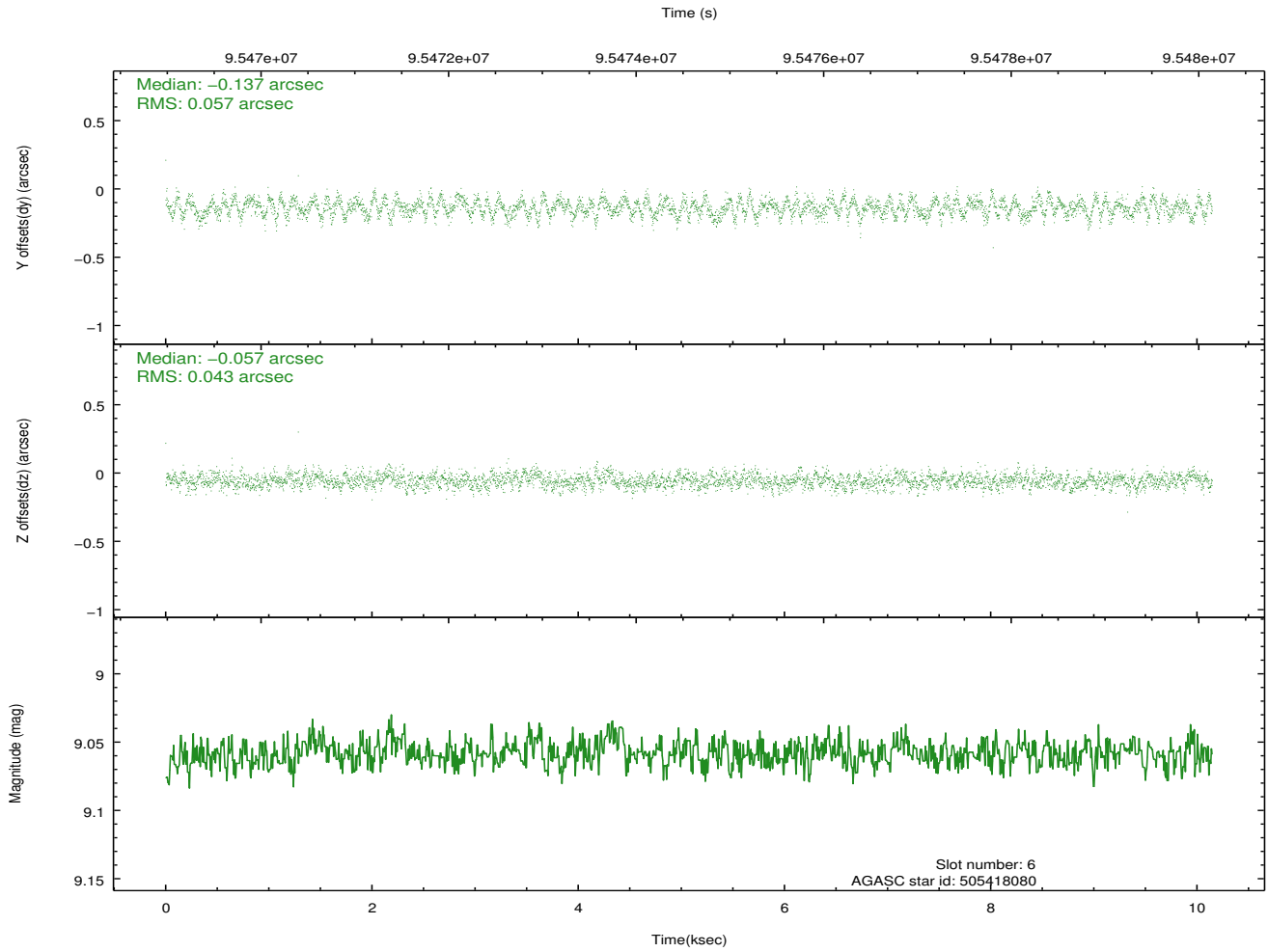
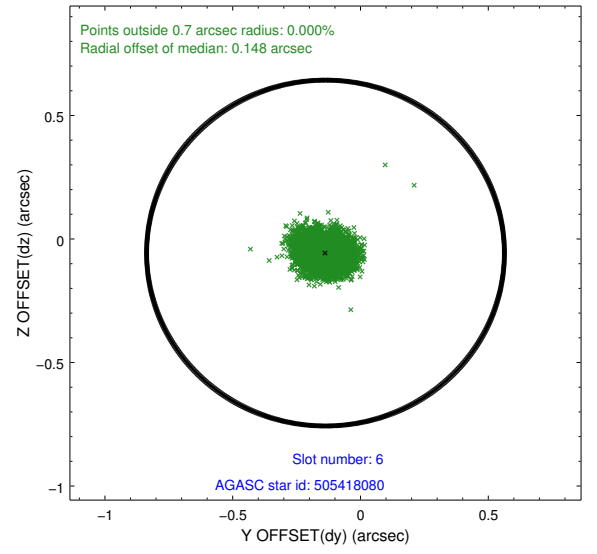
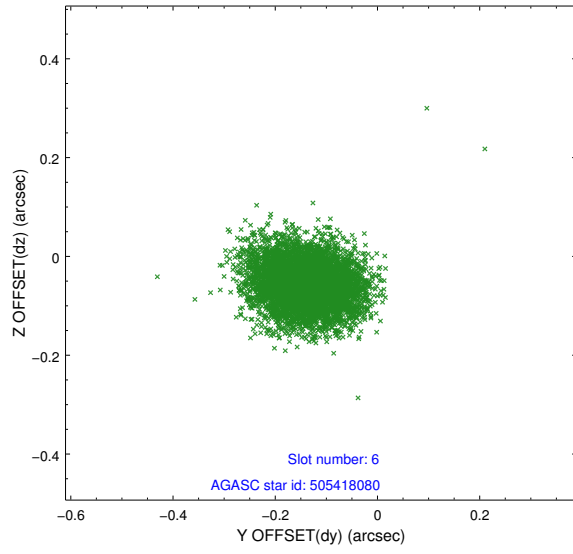
2.4.2 Slot 4



2.4.3 Slot 5

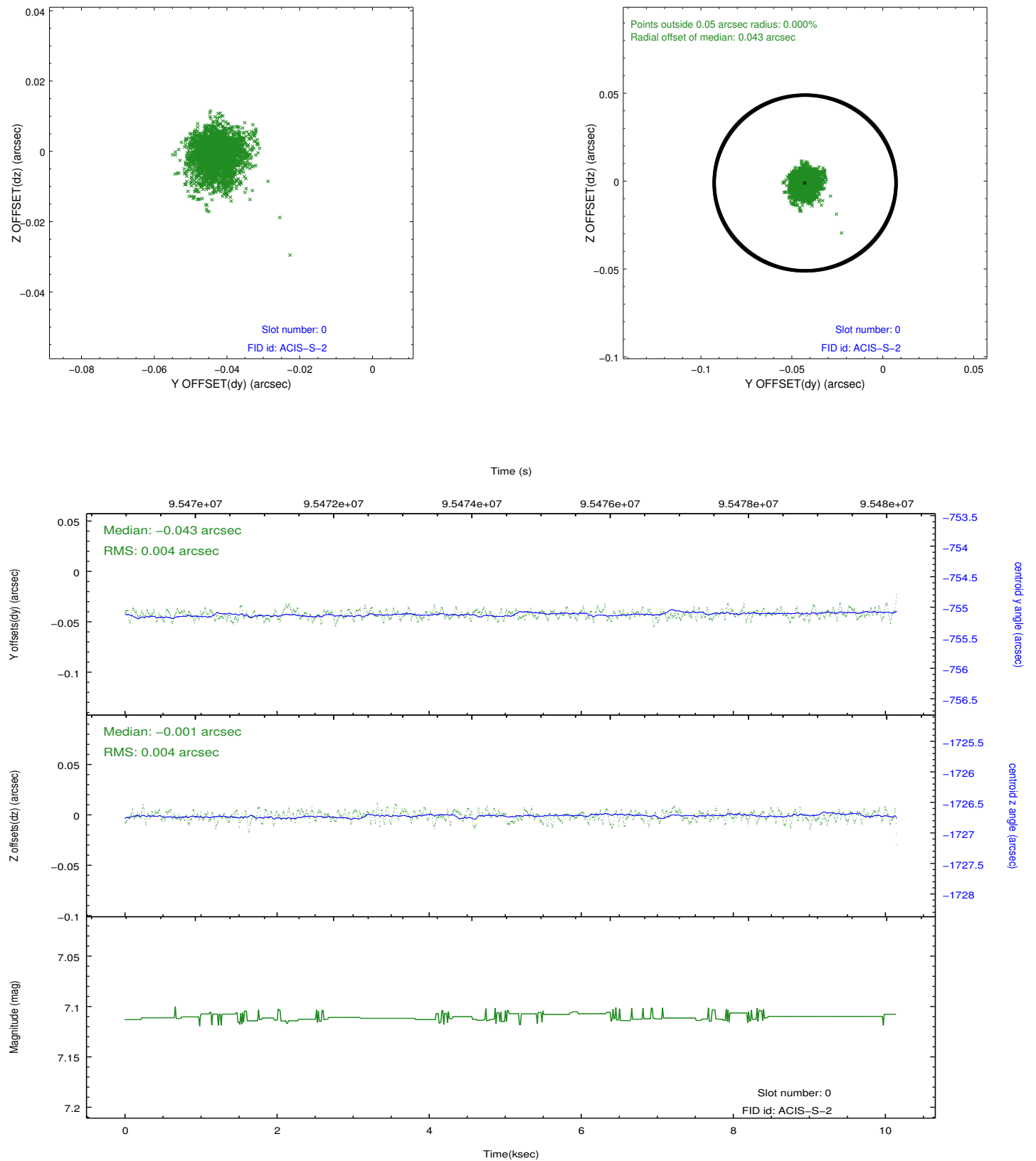


2.4.4 Slot 6

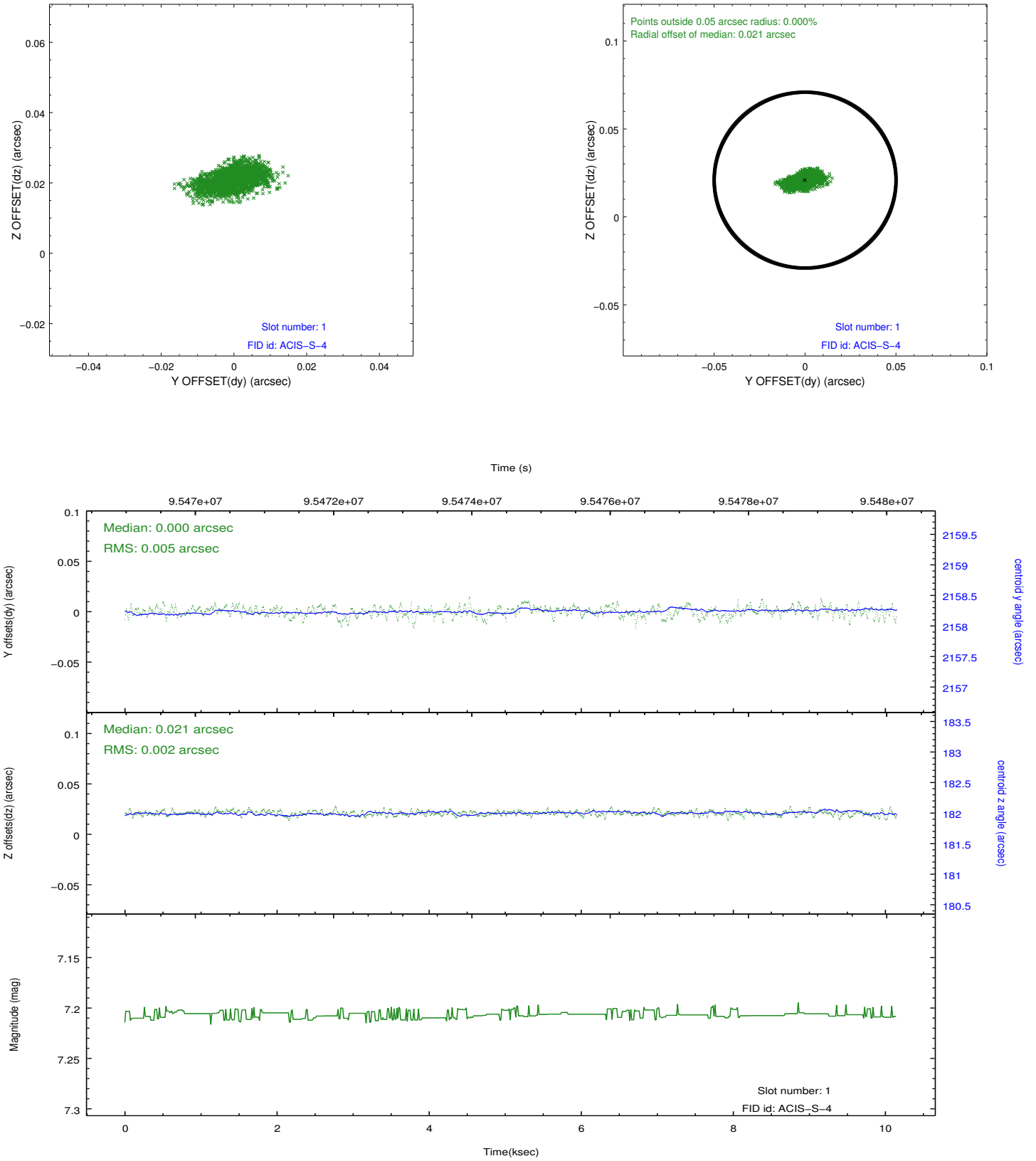


2.5 FID Slots

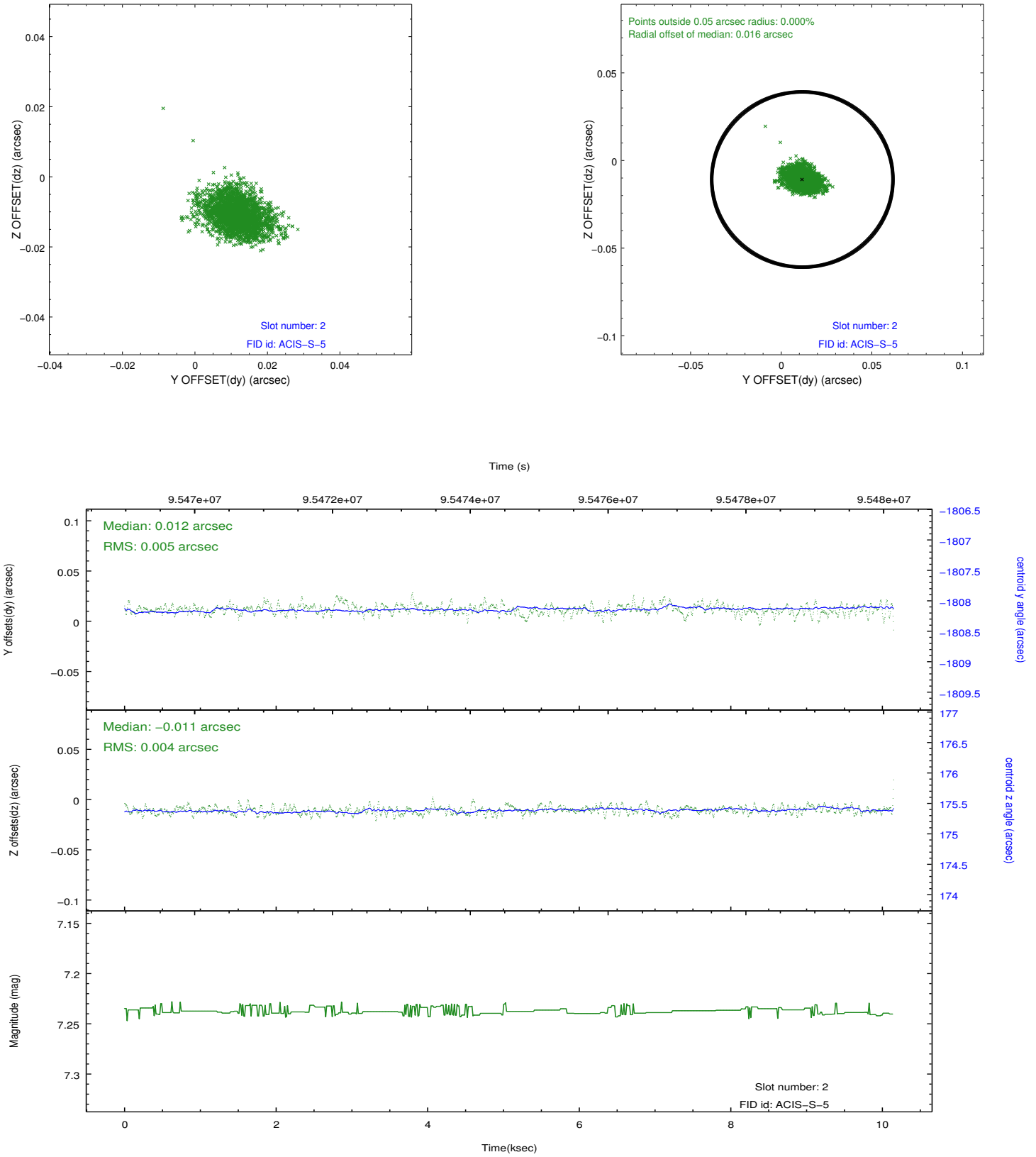
2.5.1 Slot 0



2.5.2 Slot 1



2.5.3 Slot 2



A Summary

A.1 Status

V&V Scientist	Jen Lauer
V&V Date (YYYY-MM-DD)	2012.09.21
V&V Edition	1
V&V Disposition and Status	OK
V&V Charge Time	10.145

A.2 Comments

The guide star in slot 7 was removed from the aspect solution due to poor data quality. The aspect solution is improved by the removal of this guide star from the solution.