

V&V Reference Report

L2 ASCDS Version : 7.6.9

Observation 1584 - L2 Version 001
Chandra X-Ray Center

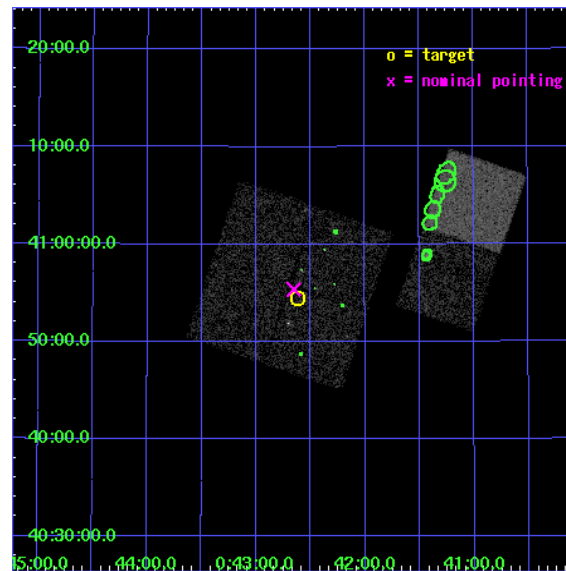
L2 Processing Date : Dec 11 2006

Contents

1	Front	2
2	OBI	3
2.1	OBI	3
2.1.1	Images	3
2.1.2	Bias	3
2.1.3	Parameters	4
2.1.4	Events	4
2.2	Compared Parameters	5
2.3	Aspect	6
2.4	Star Slots	9
2.4.1	Slot 3	9
2.4.2	Slot 4	10
2.4.3	Slot 5	11
2.4.4	Slot 6	12
2.4.5	Slot 7	13
2.5	FID Slots	14
2.5.1	Slot 0	14
2.5.2	Slot 1	15
2.5.3	Slot 2	16
3	Point Sources	17
A	Summary	18
A.1	Status	18
A.2	Comments	18

1 Front

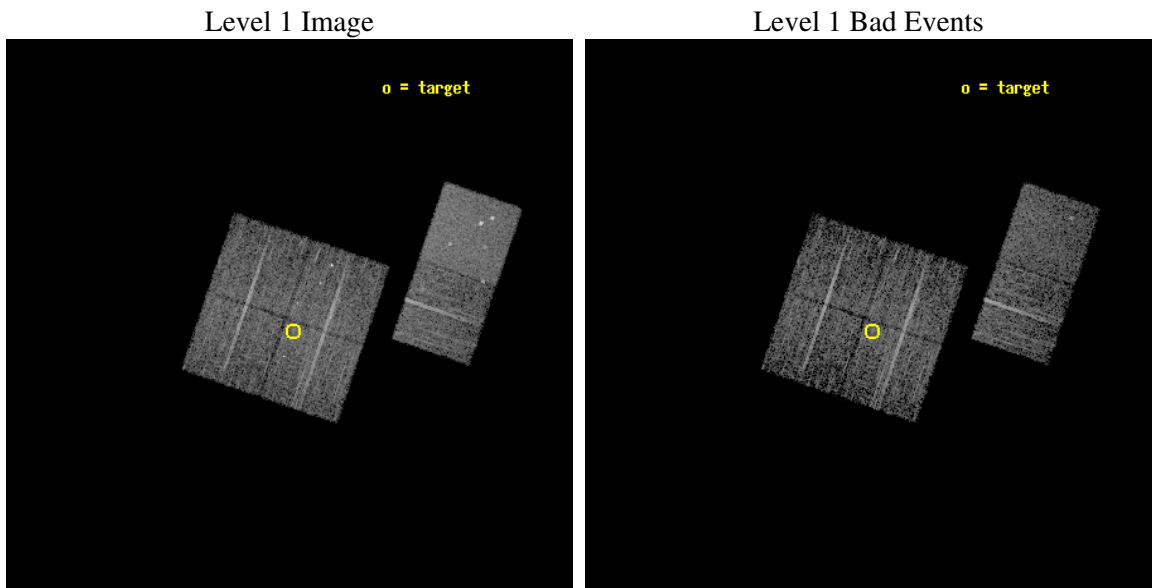
seq_num	600141
obs_id	1584
title	MONITORING THE M31 NUCLEAR REGION
observer	Dr. Stephen Murray
object	M31 NUCLEUS
dtcycle	0
cycle	P
ra_targ	10.65625
dec_targ	40.9075
ra_nom	10.663619898953
dec_nom	40.922839312937
roll_nom	108.85460555914
revision	2
ontime	4963.2000046223
livetime	4900.3529776836
ontime0	4963.2000046223
ontime1	4963.2000046223
ontime2	4963.2000046223
ontime3	4963.2000046223
ontime5	4963.2000046223
ontime6	4963.2000046223
l2events	36643



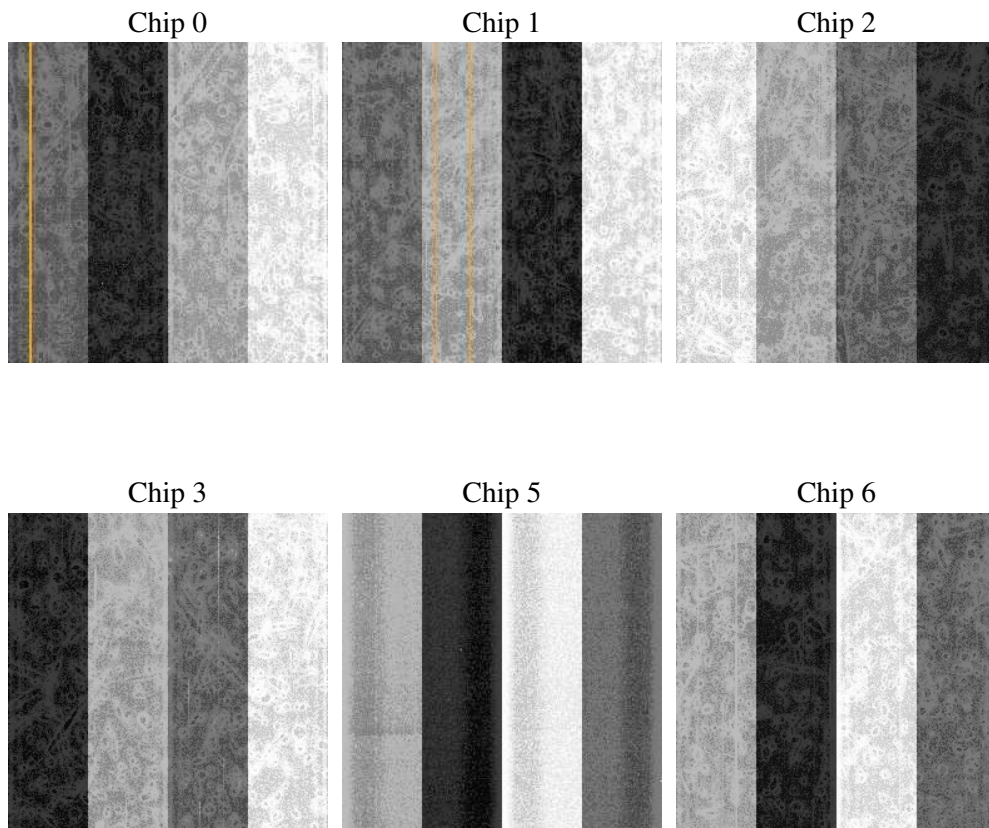
2 OBI

2.1 OBI

2.1.1 Images



2.1.2 Bias



2.1.3 Parameters

obi_num	0
ascdsver	7.6.9
caldsver	3.2.4
date	2006-12-11T11:52:53
revision	2

sched_exp_time	5000.000000
ontime	4968.4498643279
ontime0	4968.4498643279
ontime1	4968.4498643279
ontime2	4968.4498643279
ontime3	4968.4498643279
ontime5	4968.4498643279
ontime6	4968.4498444051
l1events	208287

2.1.4 Events

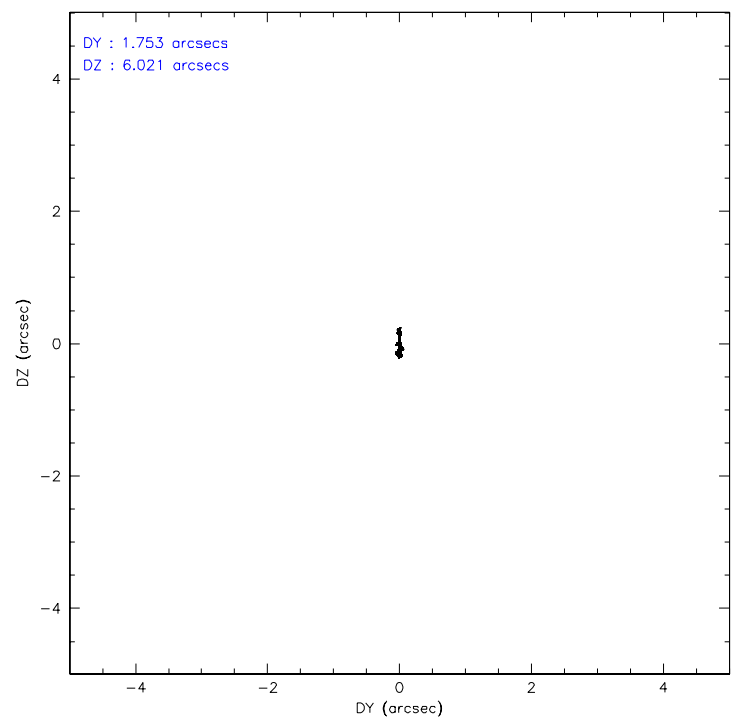
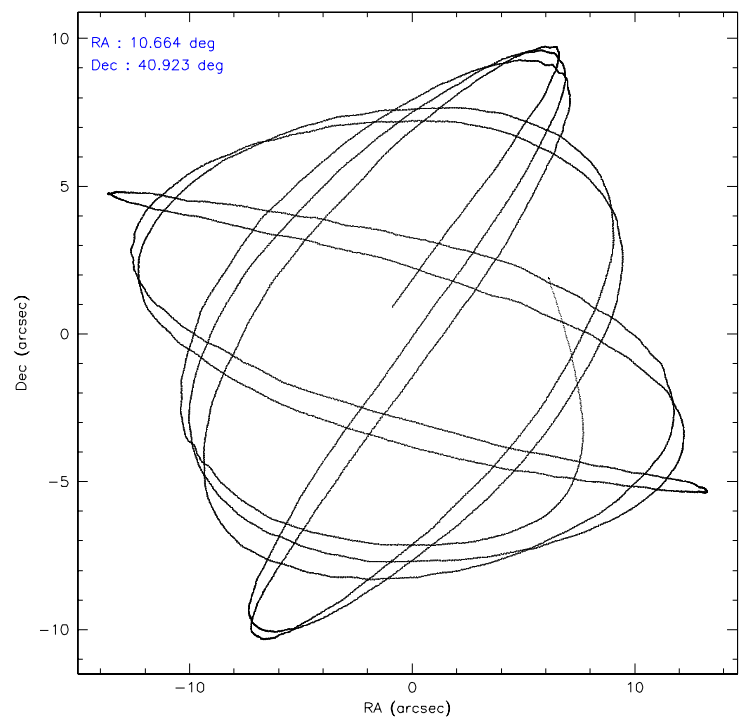
	ccd 0	ccd 1	ccd 2	ccd 3	ccd 5	ccd 6
level 1 events	30489	30385	33986	33694	46867	32866
rejected events	26519	26477	29257	29507	25800	28845
rejected %	86%	87%	86%	87%	55%	87%

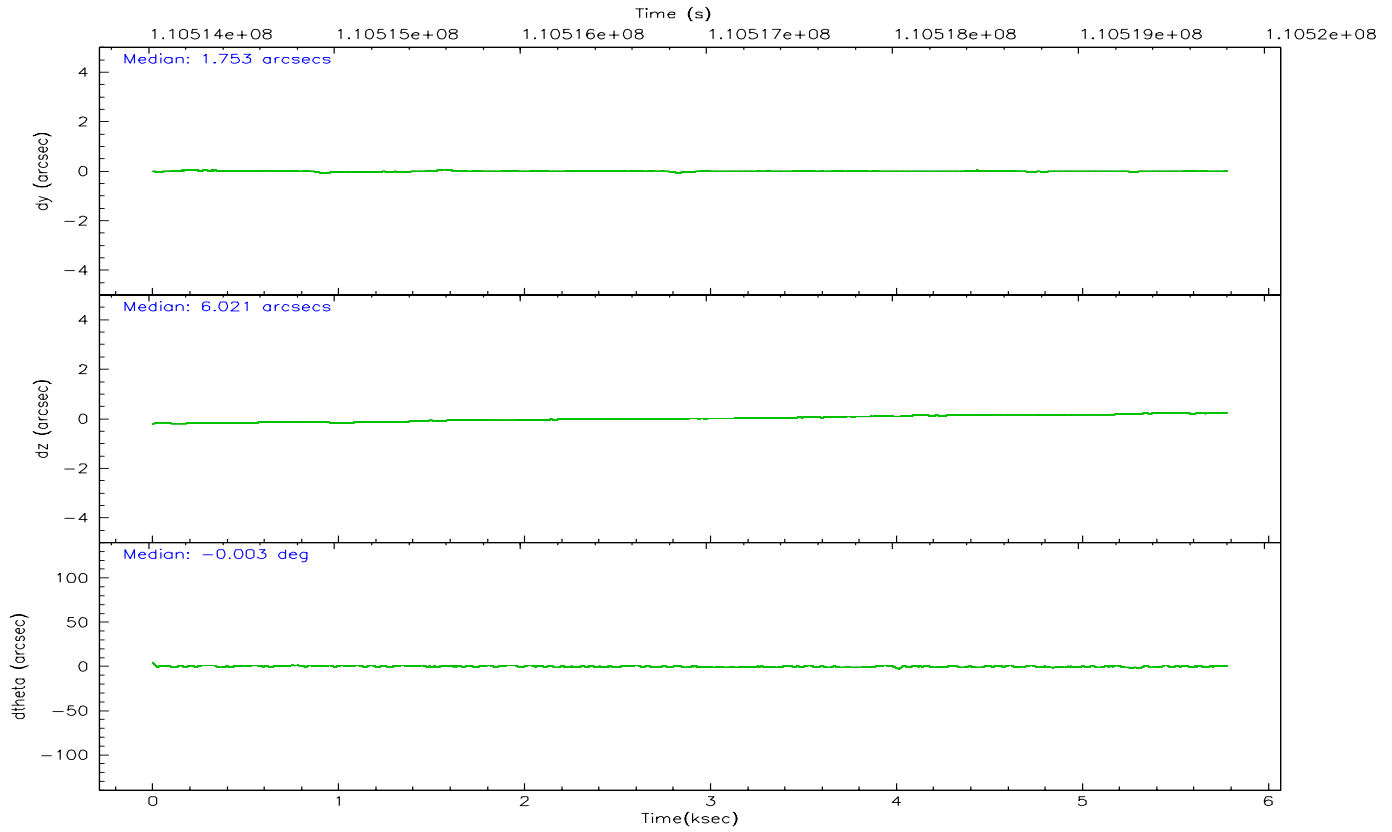
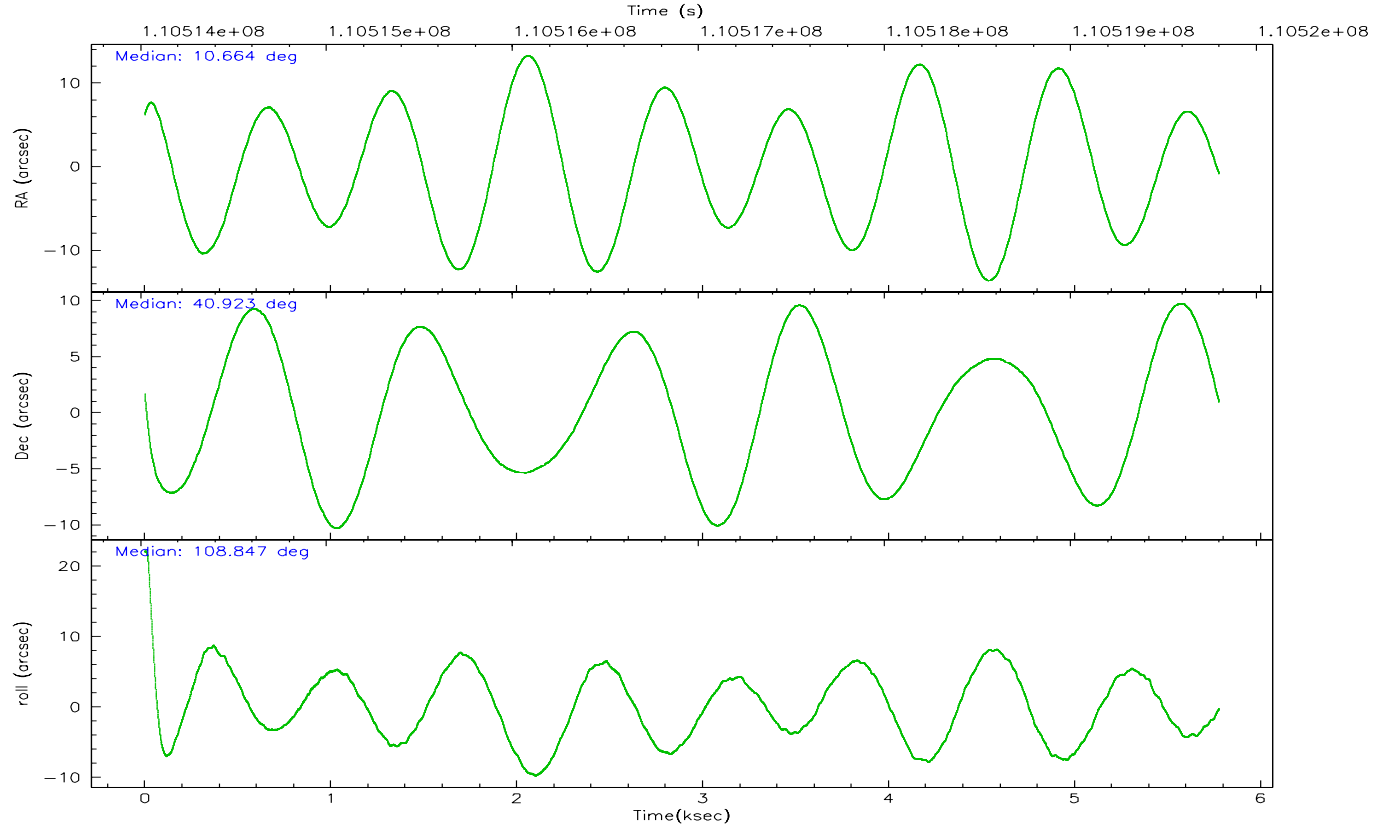
	ccd 0	ccd 1	ccd 2	ccd 3	ccd 5	ccd 6
grade 0 events	1729	1563	2492	1996	2525	1779
	5%	5%	7%	5%	5%	5%
grade 1 events	16	13	27	26	69	19
	0%	0%	0%	0%	0%	0%
grade 2 events	854	841	858	822	6350	747
	2%	2%	2%	2%	13%	2%
grade 3 events	400	378	392	357	430	353
	1%	1%	1%	1%	0%	1%
grade 4 events	359	375	337	379	452	399
	1%	1%	0%	1%	0%	1%
grade 5 events	1125	1228	1150	1215	2315	1297
	3%	4%	3%	3%	4%	3%
grade 6 events	633	755	654	641	11344	746
	2%	2%	1%	1%	24%	2%
grade 7 events	25373	25232	28076	28258	23382	27526
	83%	83%	82%	83%	49%	83%

2.2 Compared Parameters

Parameter	Planned	Actual	Parameter	Planned	Actual
Instrument	ACIS	ACIS	Obspar format version number	6	6
Detector	ACIS-012356	ACIS-012356	Obspar file type	PREDICTED	ACTUAL
Grating	NONE	NONE	Obspar update status	NONE	UPDATED
Data mode	FAINT	FAINT	Number of optional ACIS chips dropped	0	0
Observation mode	POINTING	POINTING	On-chip summing requested	N	N
Pointing RA	10.691000	10.66361989895285	Subarray requested	NONE	NONE
Pointing Dec	40.904746	40.9228393129372	Alternating exposures requested	N	N
Pointing Roll	108.627920	108.8546055591376	Primary exposure time	0.000000	3.2
SIM focus pos (mm)	-0.782348	-0.7809083437167272			
SIM defocus (mm)	0	0.001439871863259334			
SIM translation stage pos (mm)	-233.592463	-233.5874344608287			
SIM translation stage offset (mm)	0	-0.005018542100998502			
Observation start time	110514803.184000	110513541.01373			
Observation start date	2001-07-03T02:32:19	2001-07-03T02:12:21			
Observation end time	110519803.184000	110519952.90148			
Observation end date	2001-07-03T03:55:39	2001-07-03T03:59:12			
Read mode	TIMED	TIMED			

2.3 Aspect



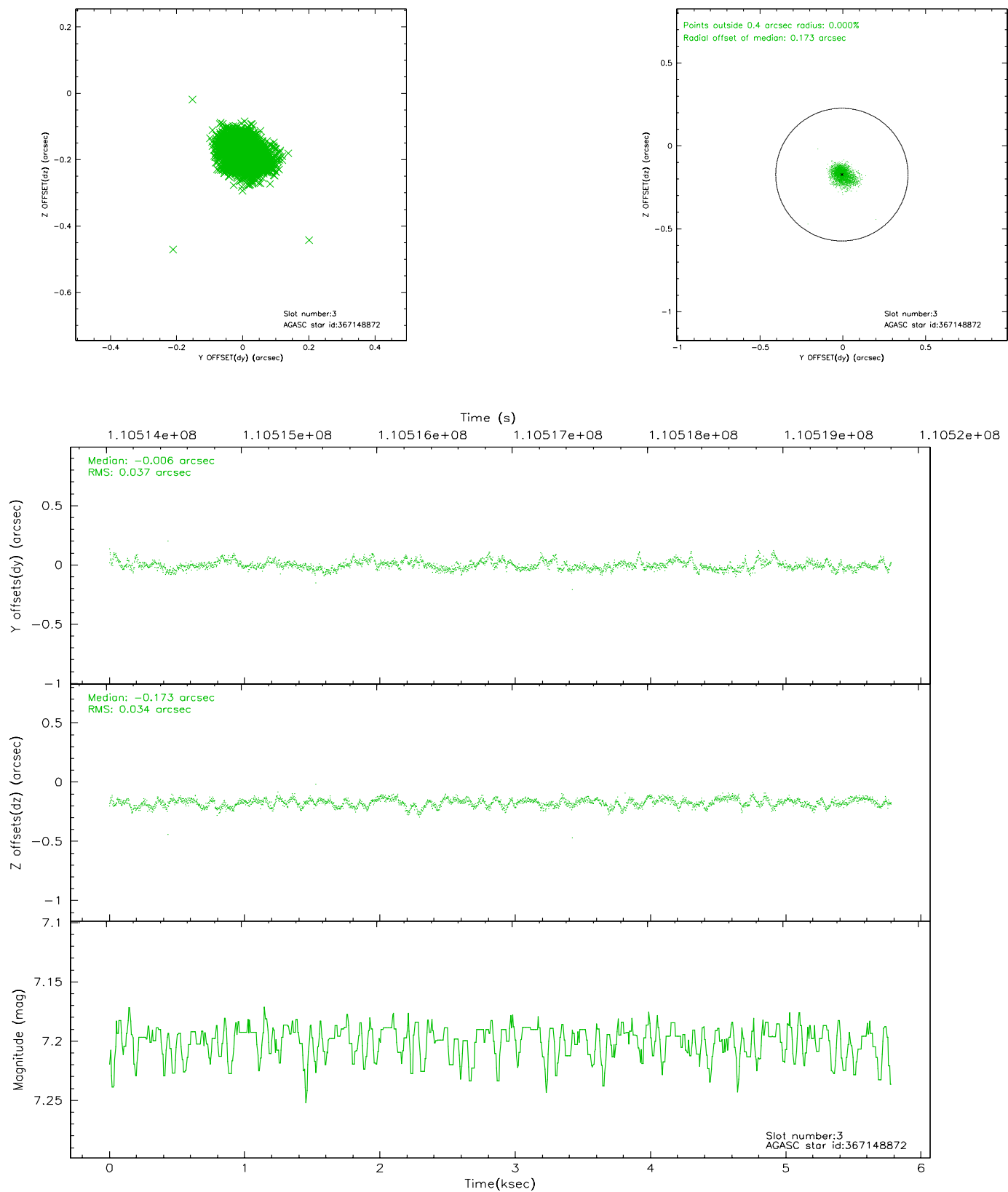


Slot Statistics

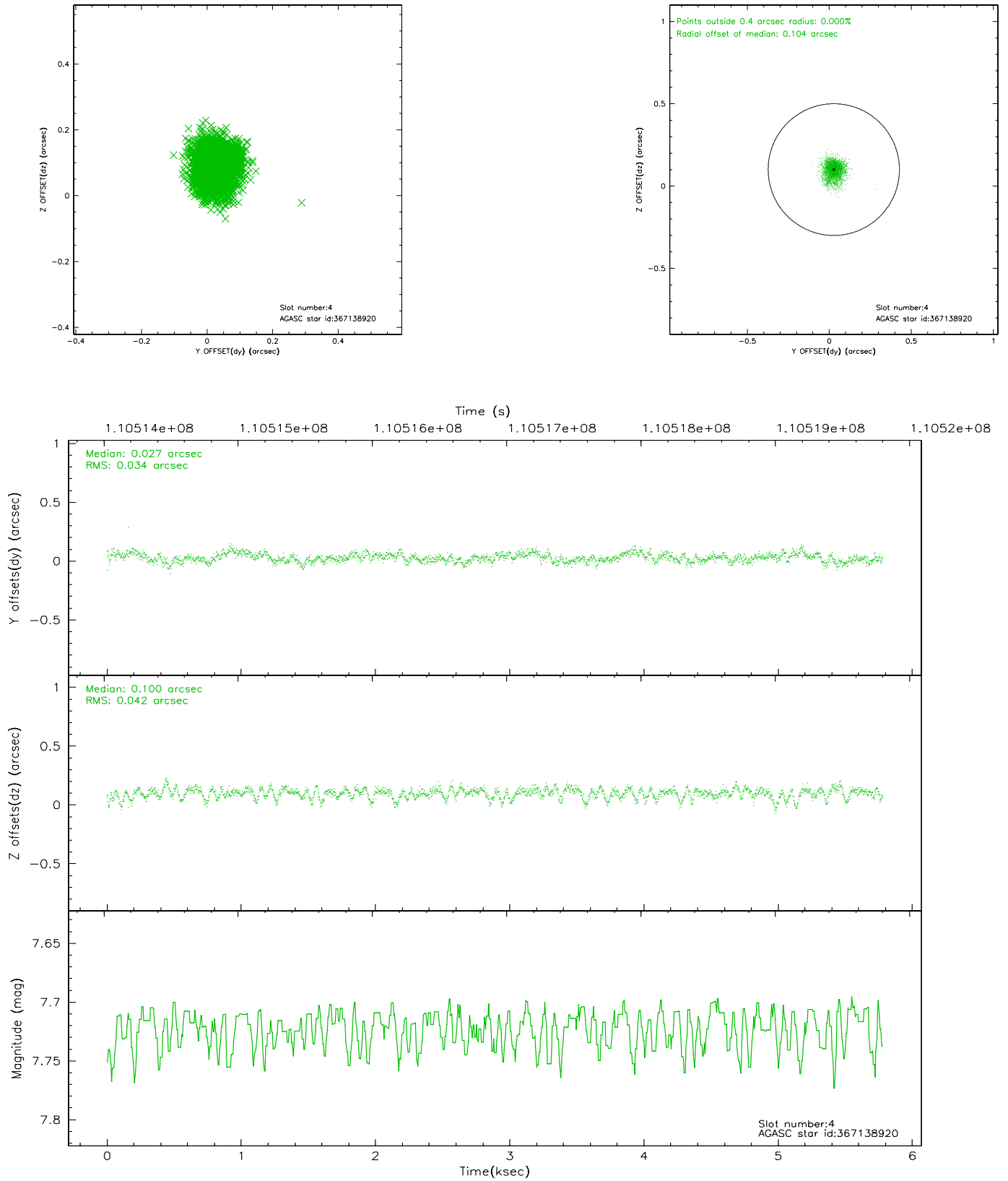
slot	status	id	mag	n_pts	med_dy	med_dz	dr1	dr2	ra	dec	mean_y	mean_z
0	FID	ACIS-I-2	7.15	1410	-0.020	-0.044	0.009	0.016	0.000000	0.000000	-756.11	-835.82
1	FID	ACIS-I-4	7.18	1409	-0.067	0.033	0.005	0.009	0.000000	0.000000	2157.42	1069.94
2	FID	ACIS-I-5	7.23	1410	-0.014	0.080	0.009	0.014	0.000000	0.000000	-1808.62	1068.97
3	GUIDE	367148872	7.20	2819	-0.006	-0.173	0.051	0.087	10.505940	40.688258	-577.57	727.55
4	GUIDE	367138920	7.72	2820	0.027	0.100	0.057	0.097	11.513485	40.808909	-1033.60	-2016.47
5	GUIDE	367139768	7.98	2820	0.037	0.061	0.051	0.086	11.069715	40.685175	-1078.15	-728.44
6	GUIDE	367144424	8.65	2819	0.184	-0.150	0.062	0.098	10.464515	40.309136	-1833.62	1273.49
7	GUIDE	367674552	8.85	2819	-0.245	0.167	0.082	0.130	11.016238	41.570845	1992.70	-1595.47

2.4 Star Slots

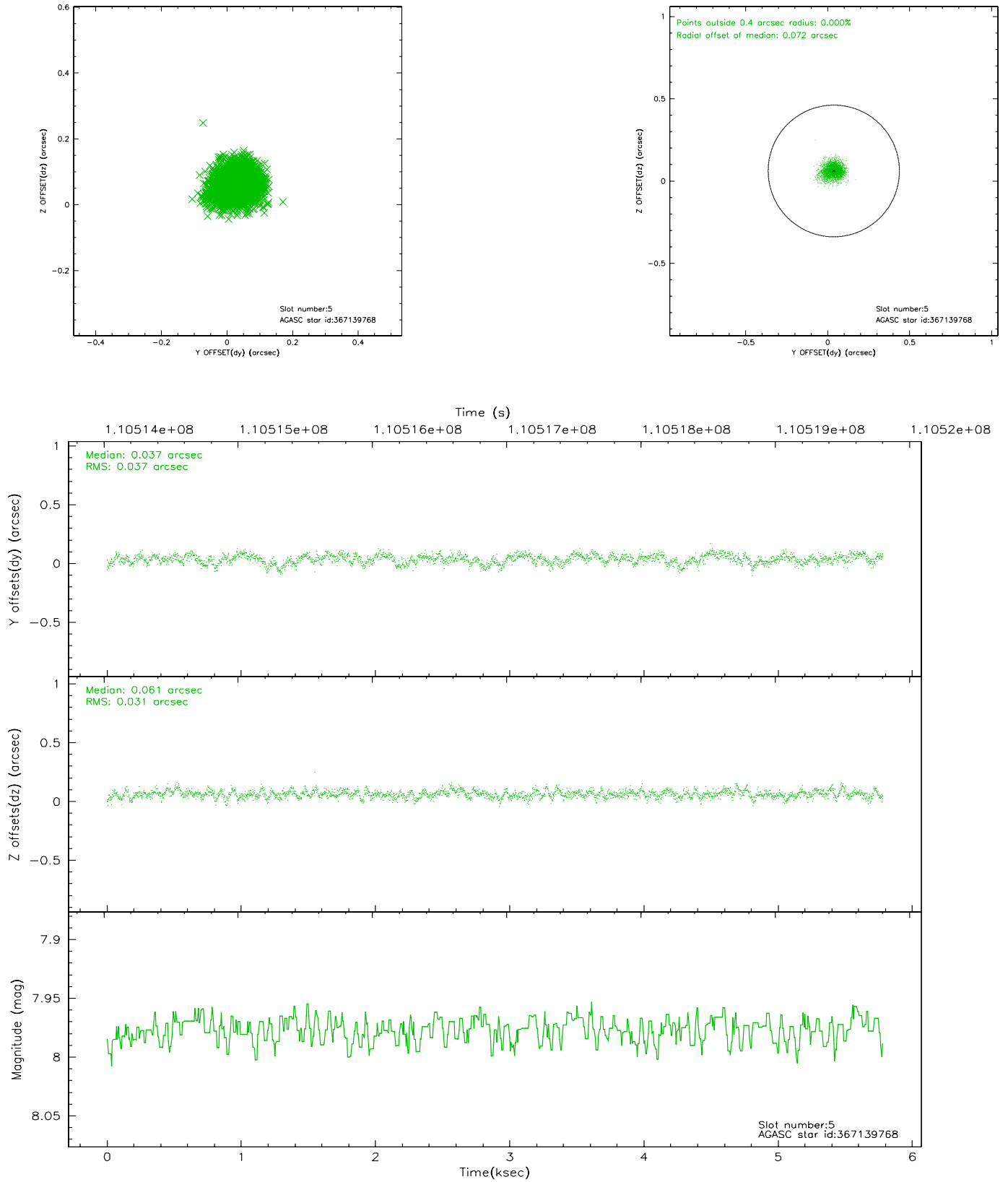
2.4.1 Slot 3



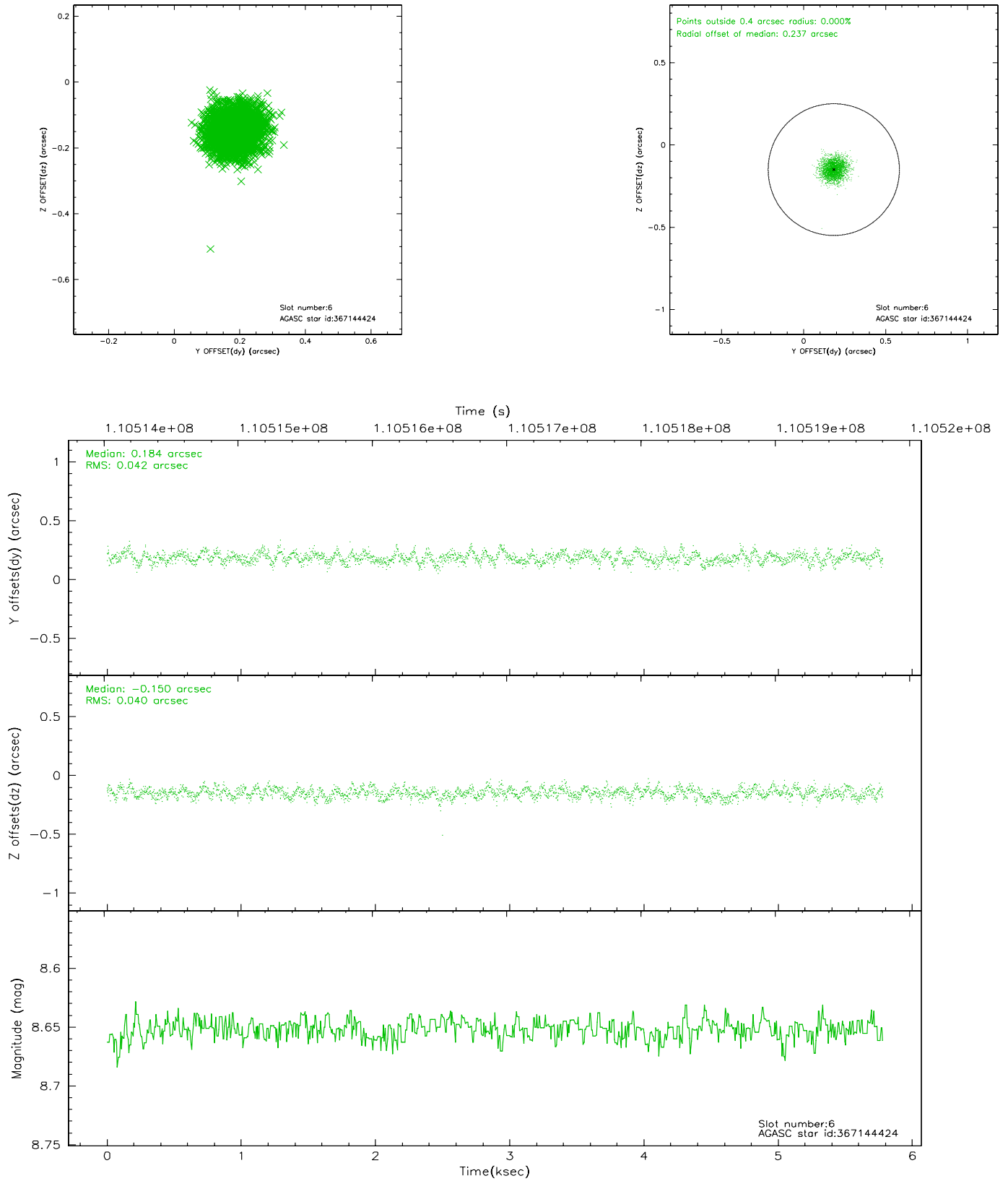
2.4.2 Slot 4



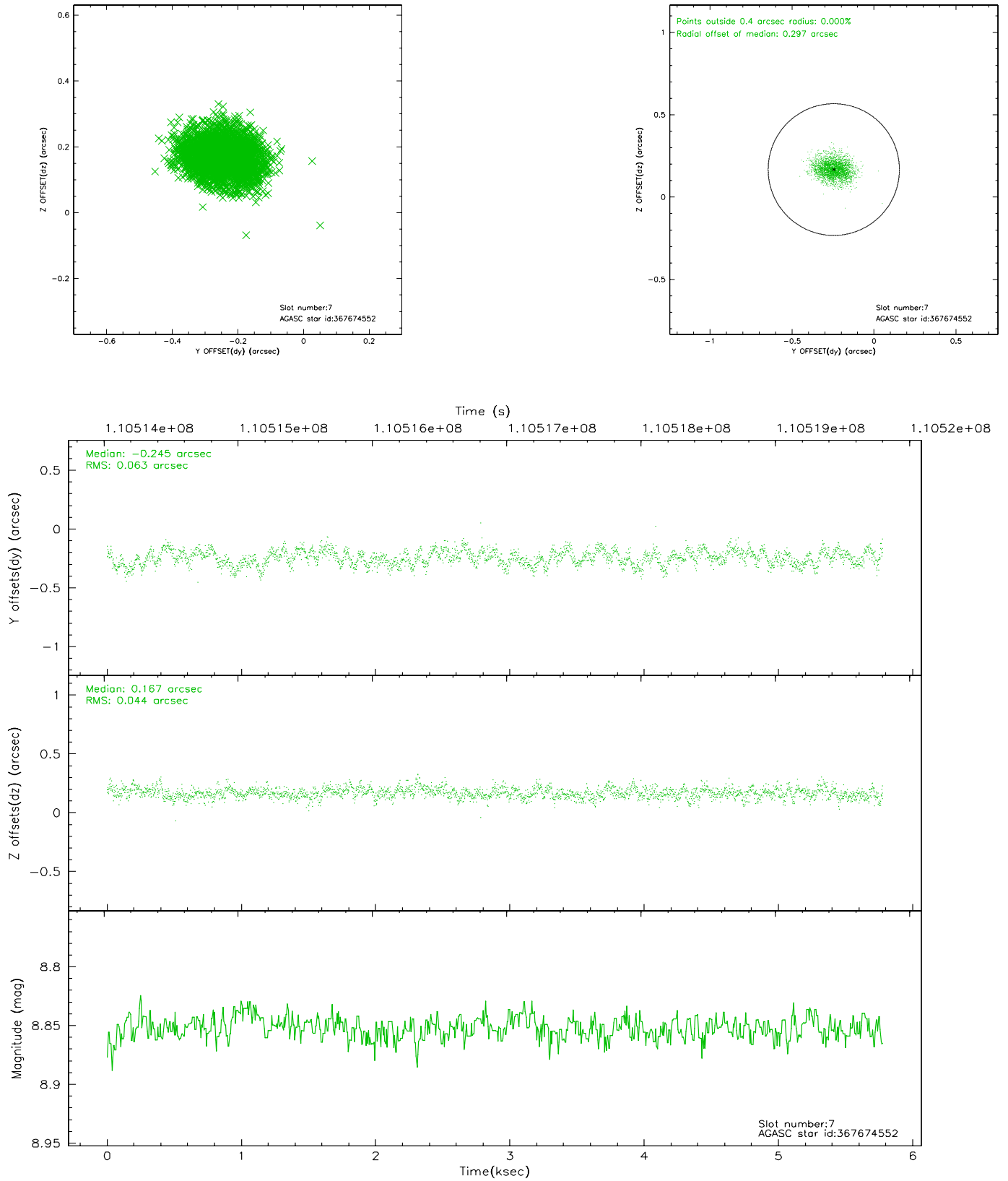
2.4.3 Slot 5



2.4.4 Slot 6

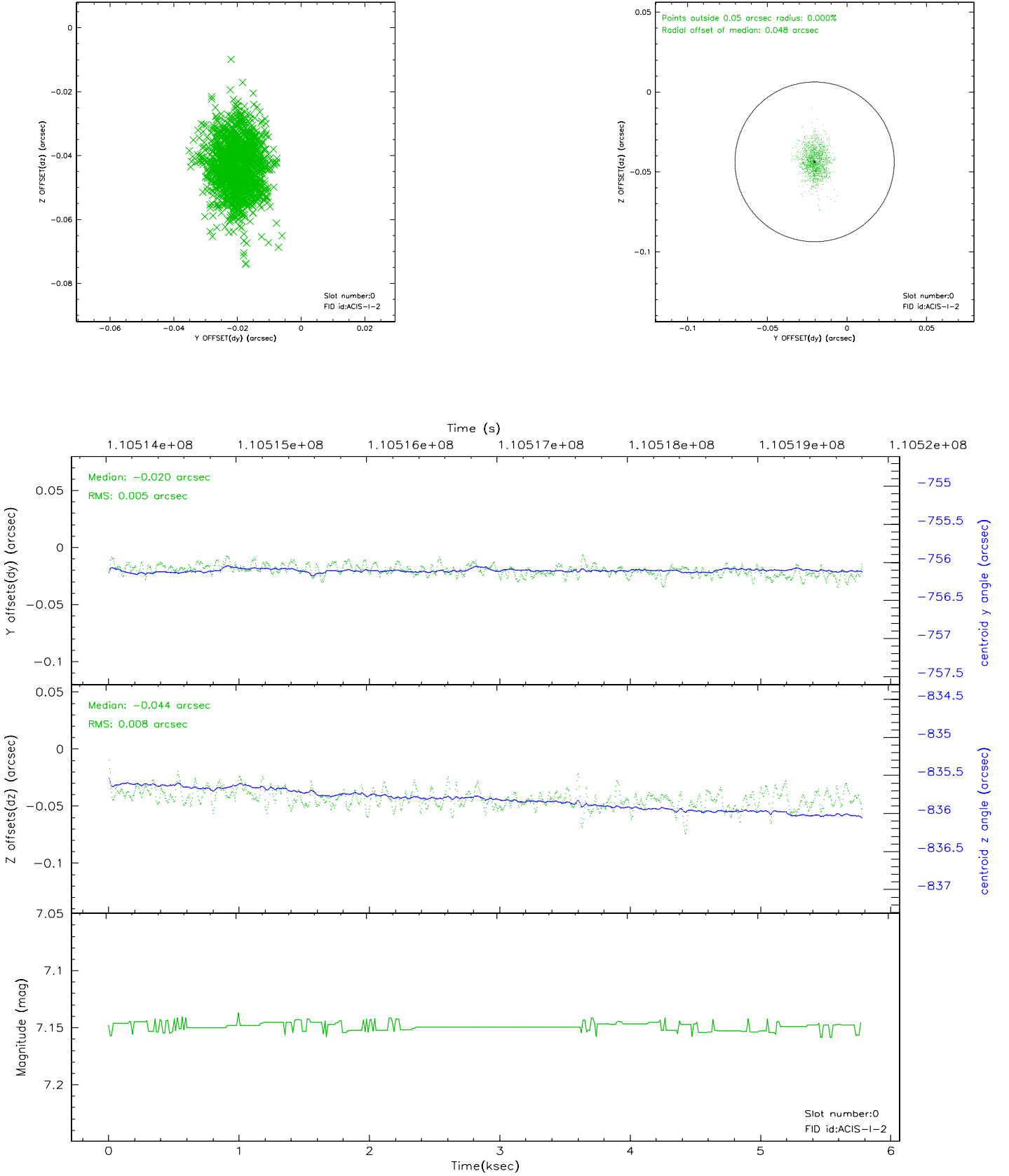


2.4.5 Slot 7

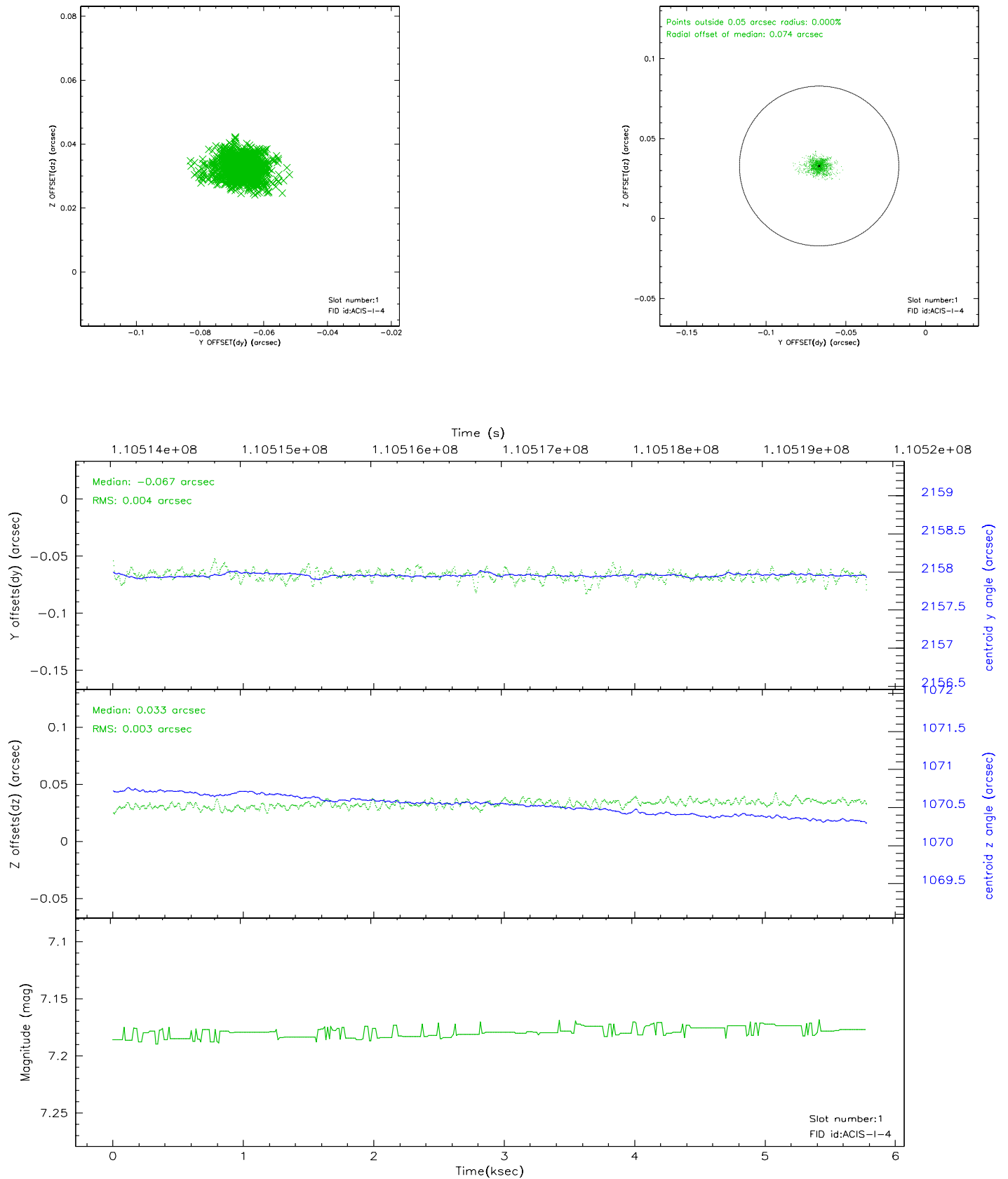


2.5 FID Slots

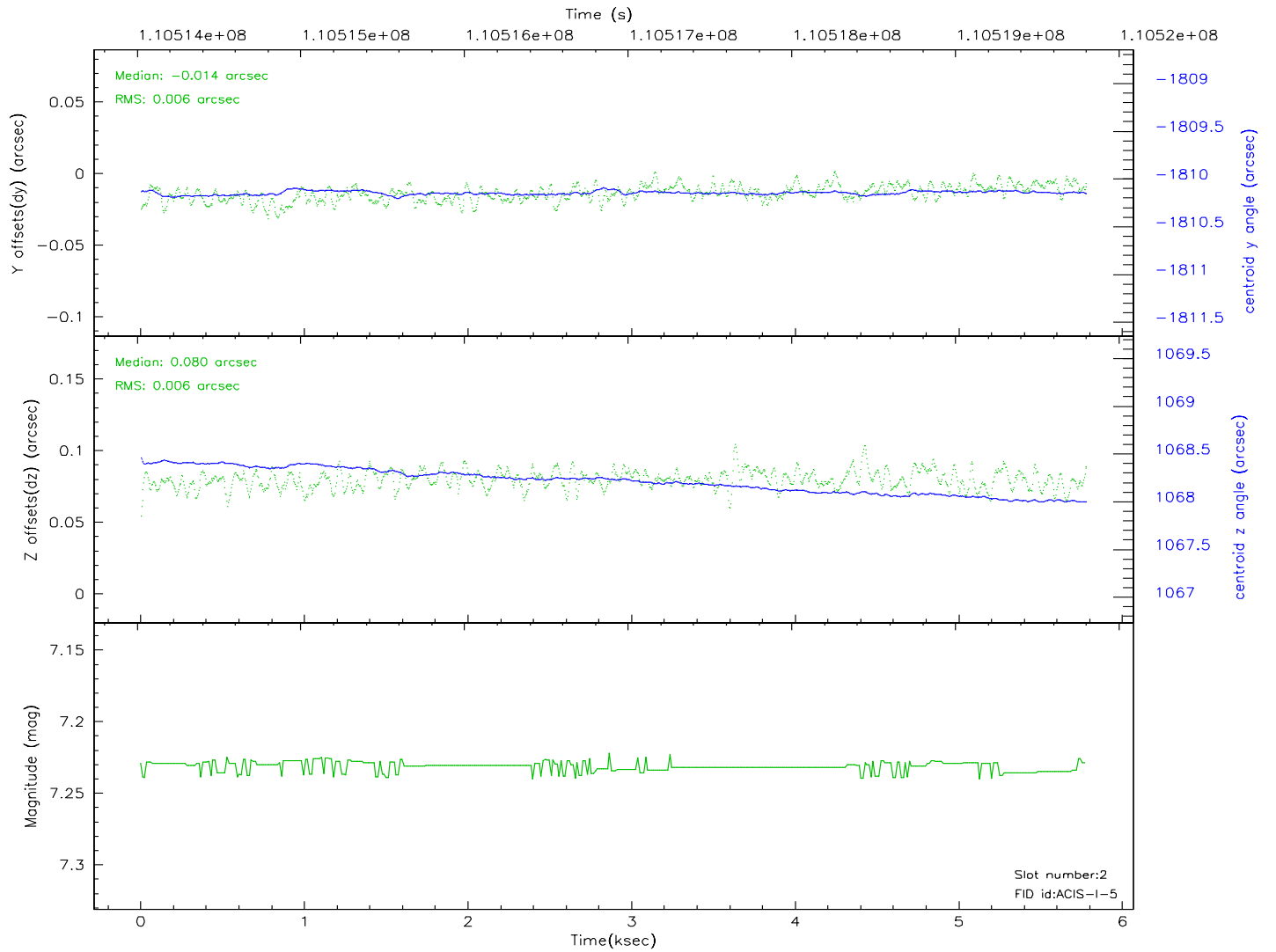
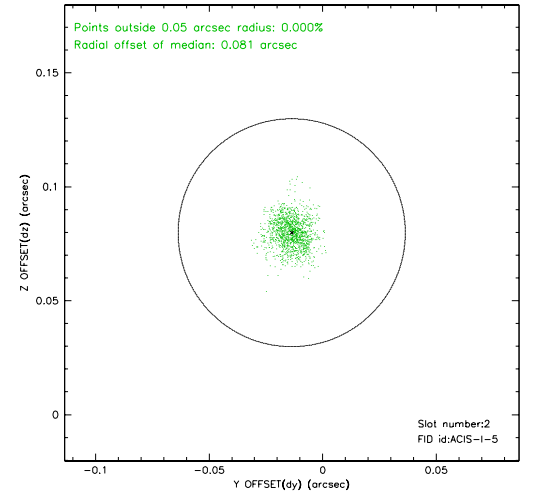
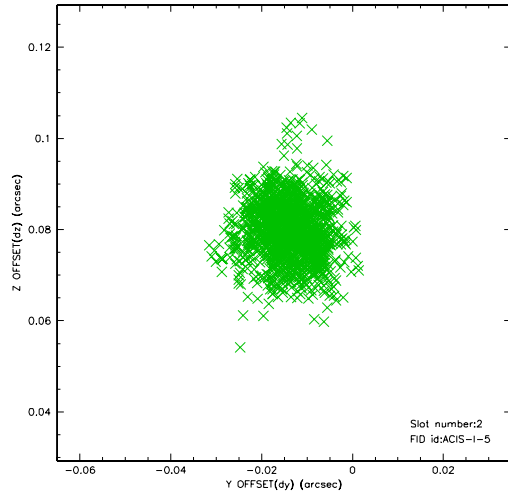
2.5.1 Slot 0



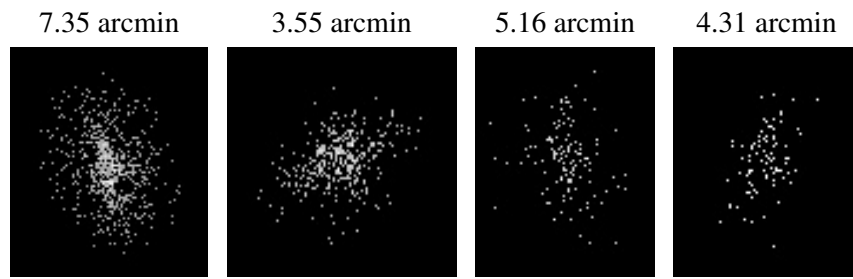
2.5.2 Slot 1



2.5.3 Slot 2



3 Point Sources



A Summary

A.1 Status

V&V Scientist	Jen Lauer
V&V Date (YYYY-MM-DD)	2006.12.11
V&V Edition	1
V&V Disposition and Status	OK
V&V Charge Time	4.966

A.2 Comments

Spirit of monitoring observation met, but not actuality; deemed OK because PI = mission planner.