

V&V Reference Report

L2 ASCDS Version : 7.6.10

Observation 1990 - L2 Version 001
Chandra X-Ray Center

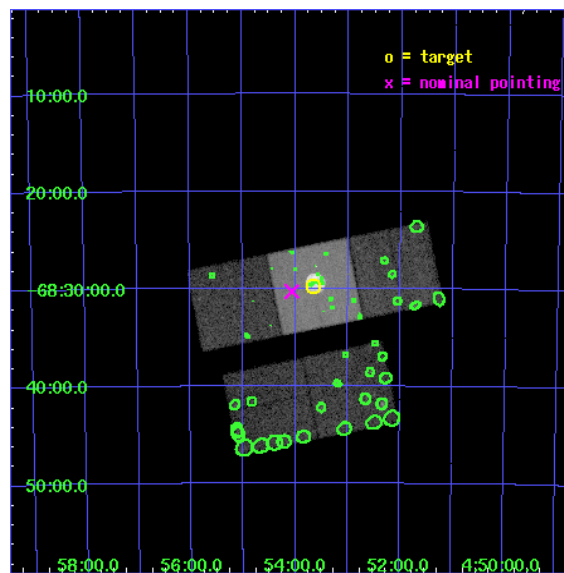
L2 Processing Date : Jan 18 2007

Contents

1	Front	2
2	OBI	3
2.1	OBI	3
2.1.1	Images	3
2.1.2	Bias	3
2.1.3	Parameters	4
2.1.4	Events	4
2.2	Compared Parameters	5
2.3	Aspect	6
2.4	Star Slots	9
2.4.1	Slot 3	9
2.4.2	Slot 4	10
2.4.3	Slot 5	11
2.4.4	Slot 6	12
2.4.5	Slot 7	13
2.5	FID Slots	14
2.5.1	Slot 0	14
2.5.2	Slot 1	15
2.5.3	Slot 2	16
3	Point Sources	17
A	Summary	18
A.1	Status	18
A.2	Comments	18

1 Front

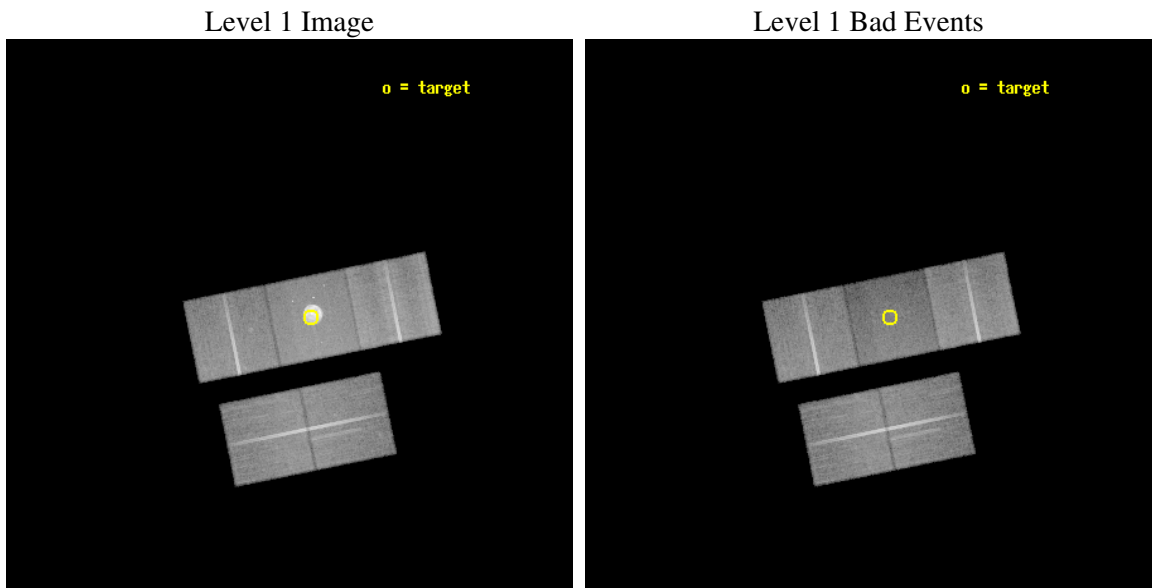
seq_num	500167
obs_id	1990
title	MATURE SUPERNOVA REMNANTS IN THE LARGE MAGELLANIC CLOUD
observer	Dr Kazimierz Borkowski
object	0453-68.5
dtcycle	0
cycle	P
ra_targ	73.416667
dec_targ	-68.495833
ra_nom	73.515731782652
dec_nom	-68.505033303361
roll_nom	348.58602448994
revision	2
ontime	39152.999924719
livetime	38641.437156684
ontime2	39143.577024072
ontime3	39149.858964458
ontime6	39146.717994228
ontime7	39152.999924719
ontime8	39143.576984152
l2events	251185



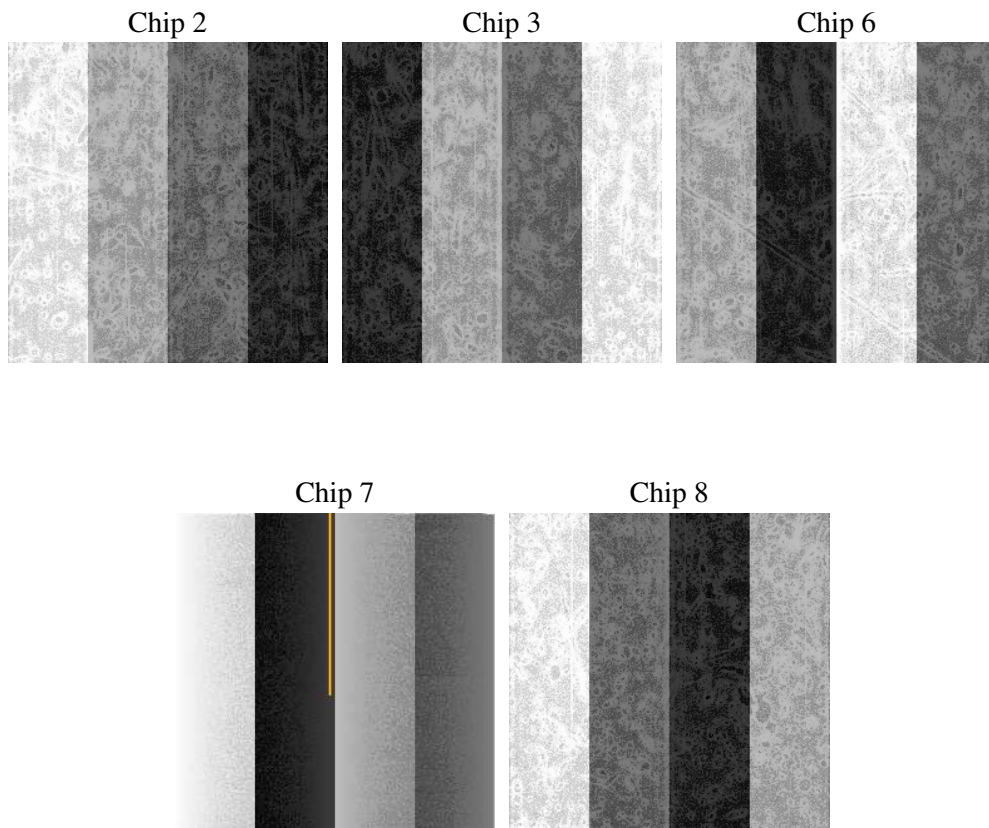
2 OBI

2.1 OBI

2.1.1 Images



2.1.2 Bias



2.1.3 Parameters

obi_num	1
ascdsver	7.6.10
caldbver	3.3.0
date	2007-01-18T06:44:30
revision	2

sched_exp_time	39000.000000
ontime	39152.999924719
ontime2	39143.577024072
ontime3	39149.858964458
ontime6	39146.717994228
ontime7	39152.999924719
ontime8	39143.576984152
l1events	1234715

2.1.4 Events

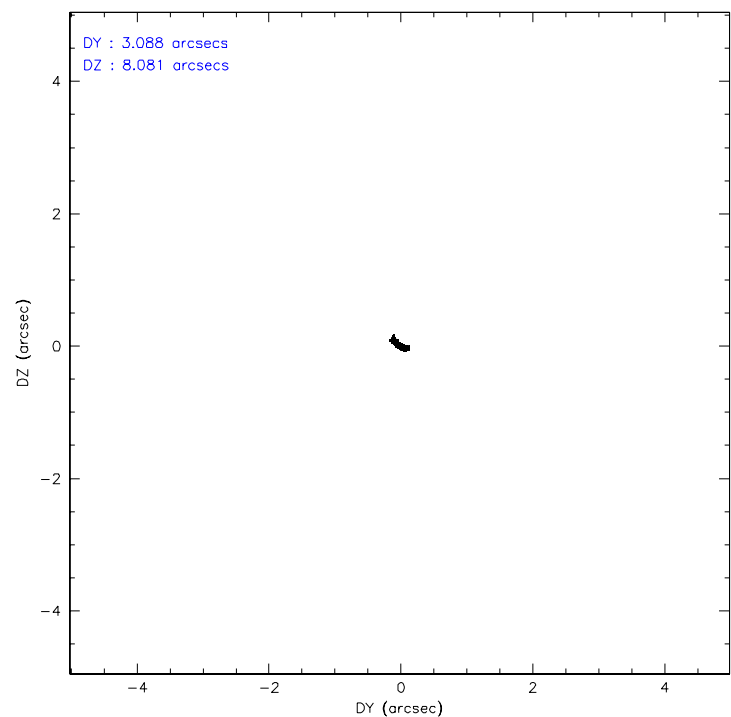
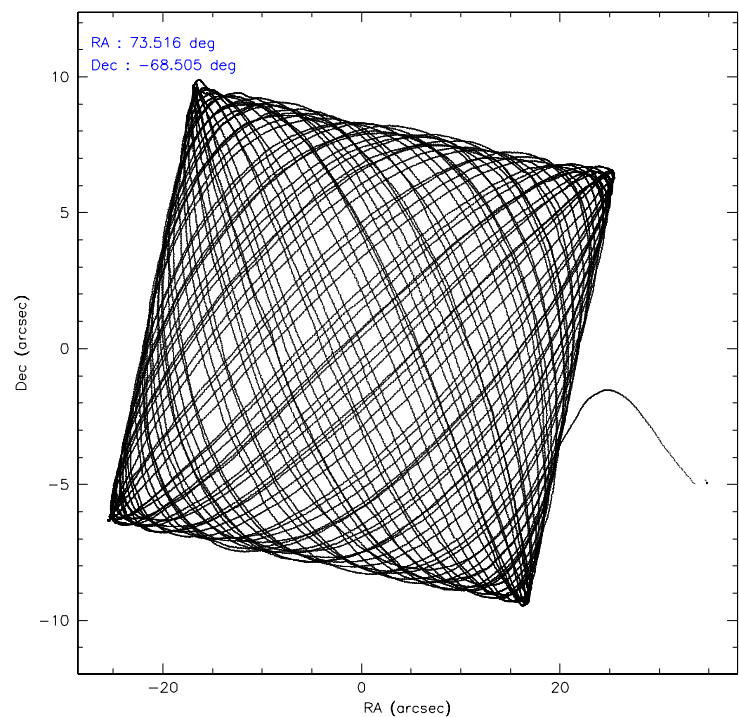
	ccd 2	ccd 3	ccd 6	ccd 7	ccd 8
level 1 events	221940	211562	220005	303430	277778
rejected events	201348	191402	196987	124983	213077
rejected %	90%	90%	89%	41%	76%

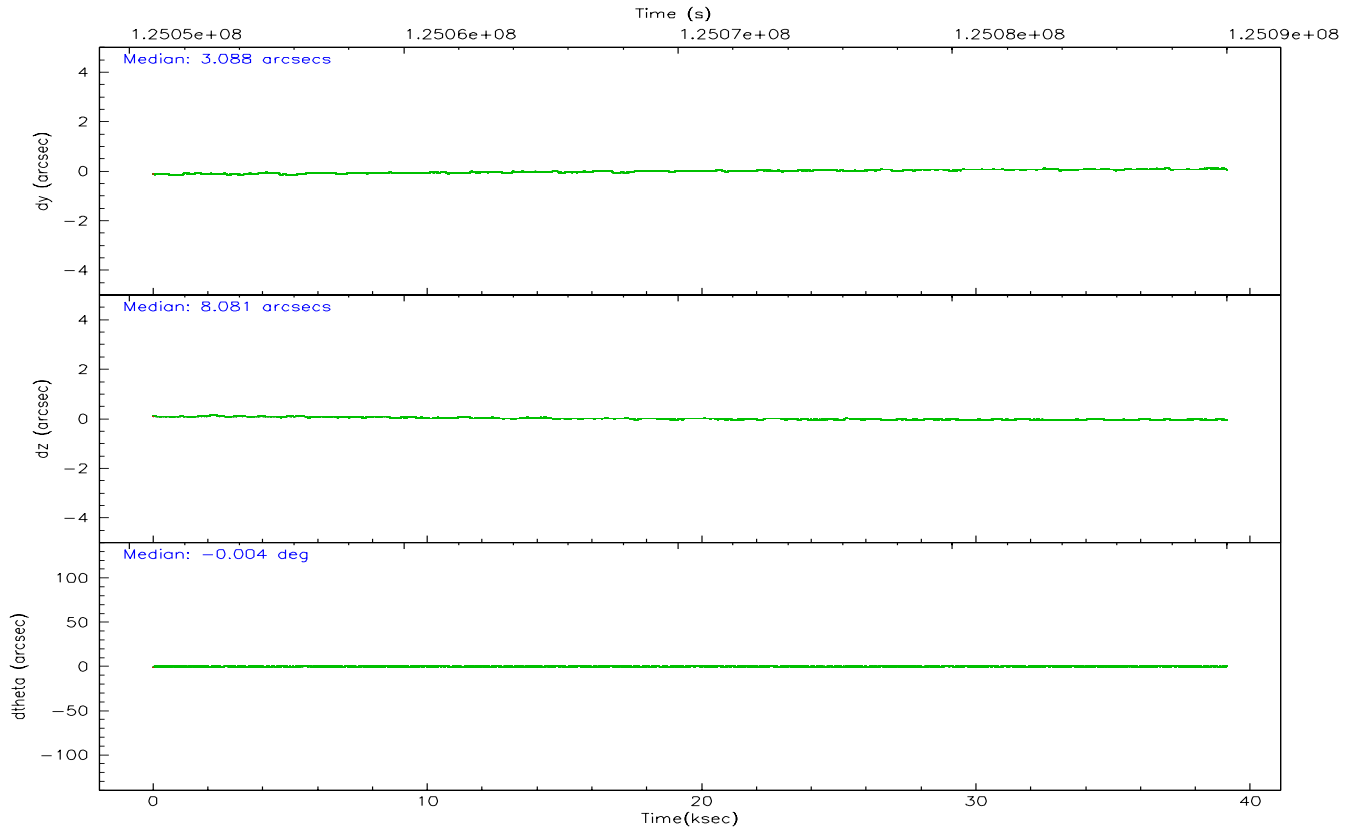
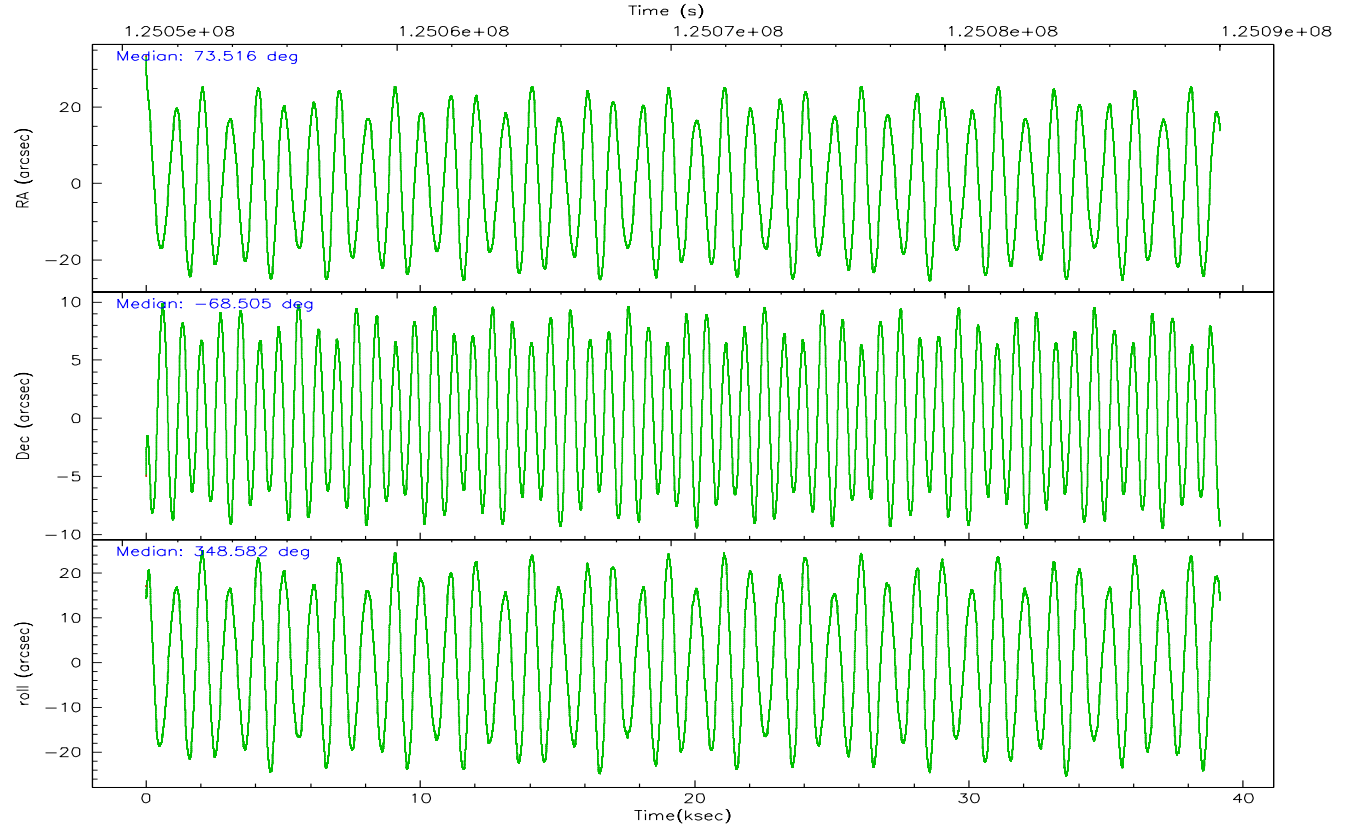
	ccd 2	ccd 3	ccd 6	ccd 7	ccd 8
grade 0 events	7663	7603	8969	38676	20769
	3%	3%	4%	12%	7%
grade 1 events	90	97	99	195	180
	0%	0%	0%	0%	0%
grade 2 events	4565	4233	4762	40576	13297
	2%	2%	2%	13%	4%
grade 3 events	2226	2267	2474	18492	7857
	1%	1%	1%	6%	2%
grade 4 events	2330	2198	2472	18508	7300
	1%	1%	1%	6%	2%
grade 5 events	6295	7514	7880	24580	11139
	2%	3%	3%	8%	4%
grade 6 events	3902	3941	4468	63041	15879
	1%	1%	2%	20%	5%
grade 7 events	194869	183709	188881	99362	201357
	87%	86%	85%	32%	72%

2.2 Compared Parameters

Parameter	Planned	Actual	Parameter	Planned	Actual
Instrument	ACIS	ACIS	Obspar format version number	6	6
Detector	ACIS-23678	ACIS-23678	Obspar file type	PREDICTED	ACTUAL
Grating	NONE	NONE	Obspar update status	NONE	UPDATED
Data mode	VFAINT	VFAINT	Number of optional ACIS chips dropped	0	0
Observation mode	POINTING	POINTING	On-chip summing requested	N	N
Pointing RA	73.445462	73.51573178265195	Subarray requested	NONE	NONE
Pointing Dec	-68.514020	-68.5050333033612	Alternating exposures requested	N	N
Pointing Roll	348.364017	348.5860244899366	Primary exposure time	0.000000	3.1
SIM focus pos (mm)	-0.684267	-0.6828225247311905			
SIM defocus (mm)	0	0.001444936568705701			
SIM translation stage pos (mm)	-190.132523	-190.1400660498719			
SIM translation stage offset (mm)	0	0.00754346686406393			
Observation start time	125051016.184000	125049933.22699			
Observation start date	2001-12-18T08:22:32	2001-12-18T08:05:33			
Observation end time	125090016.184000	125090658.52863			
Observation end date	2001-12-18T19:12:32	2001-12-18T19:24:18			
Read mode	TIMED	TIMED			

2.3 Aspect



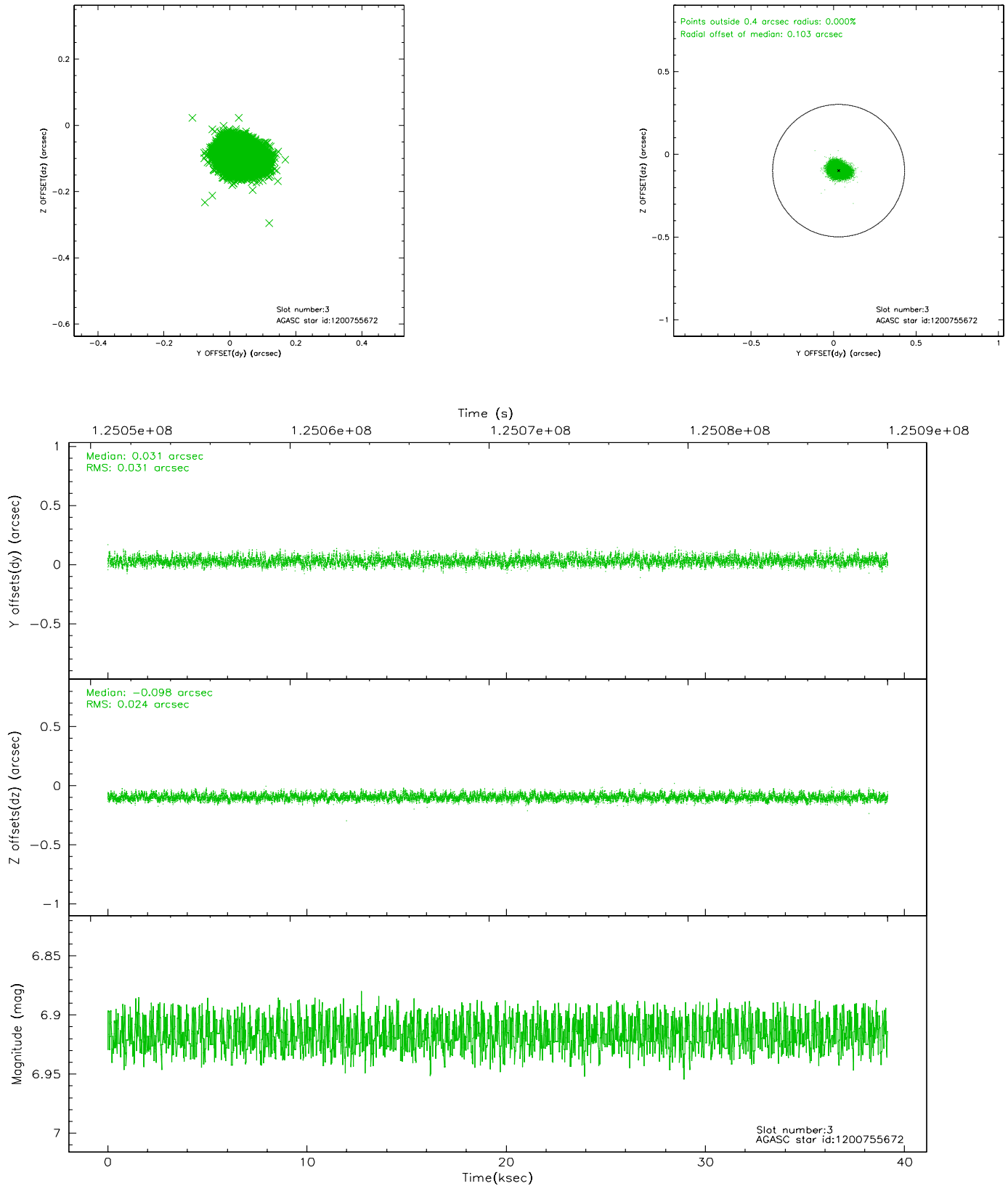


Slot Statistics

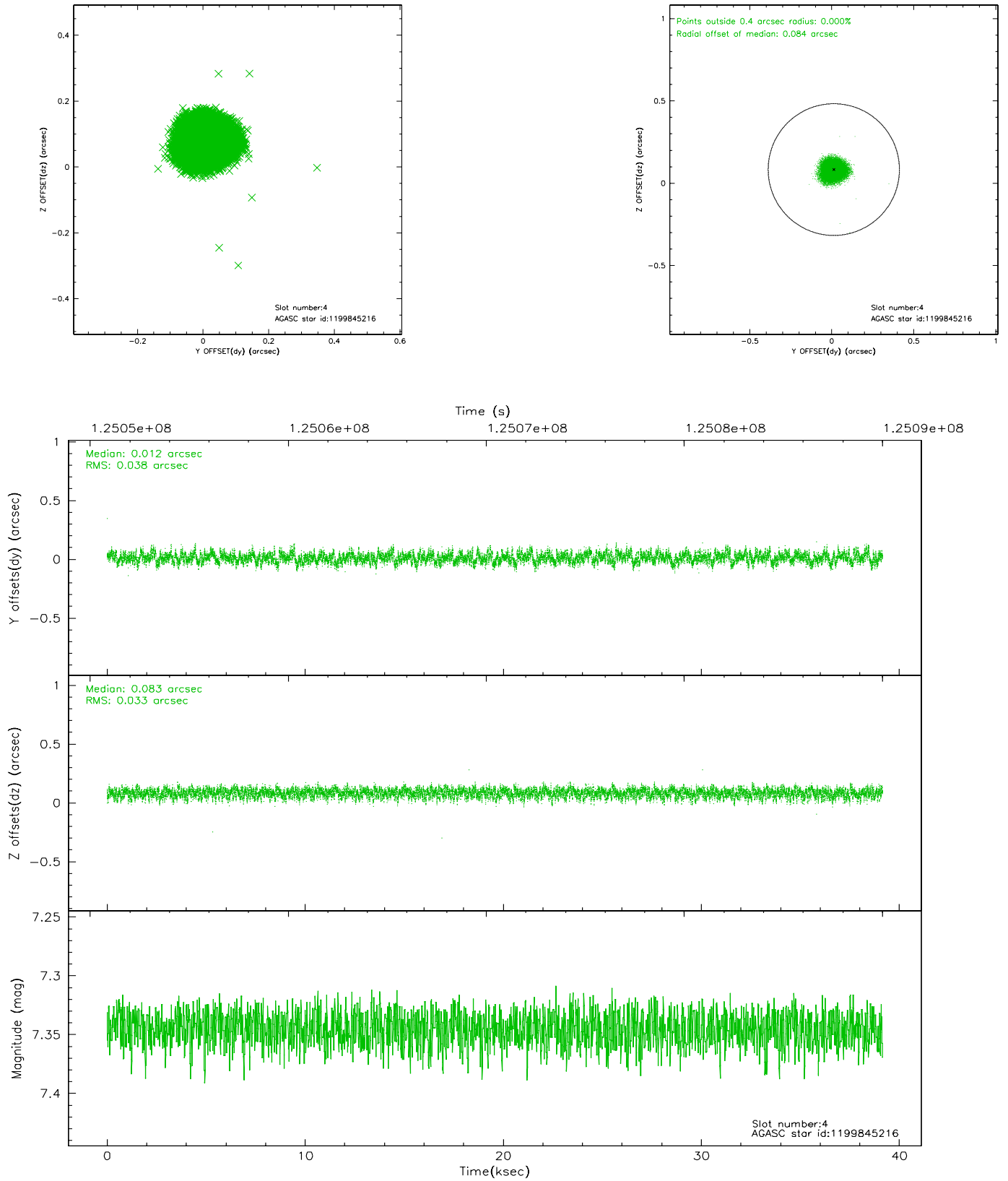
slot	status	id	mag	n_pts	med_dy	med_dz	dr1	dr2	ra	dec	mean_y	mean_z
0	FID	ACIS-S-2	7.11	9549	0.007	0.019	0.007	0.012	0.000000	0.000000	-755.73	-1729.26
1	FID	ACIS-S-4	7.20	9548	-0.076	-0.008	0.006	0.010	0.000000	0.000000	2157.47	179.15
2	FID	ACIS-S-5	7.24	9548	0.039	-0.002	0.007	0.012	0.000000	0.000000	-1808.50	172.88
3	GUIDE	1200755672	6.92	19100	0.031	-0.098	0.042	0.067	72.836556	-68.069645	-1124.29	1397.18
4	GUIDE	1199845216	7.34	19099	0.012	0.083	0.054	0.085	71.656273	-68.546034	-2277.36	-622.01
5	GUIDE	1200758840	6.99	19099	-0.076	-0.052	0.044	0.072	75.386593	-68.028714	2215.69	2197.78
6	GUIDE	1200759376	8.97	19093	-0.040	0.041	0.064	0.103	74.427278	-69.001357	1596.29	-1473.05
7	GUIDE	1199839616	9.24	19088	0.072	0.022	0.066	0.107	71.616630	-68.741932	-2165.14	-1320.51

2.4 Star Slots

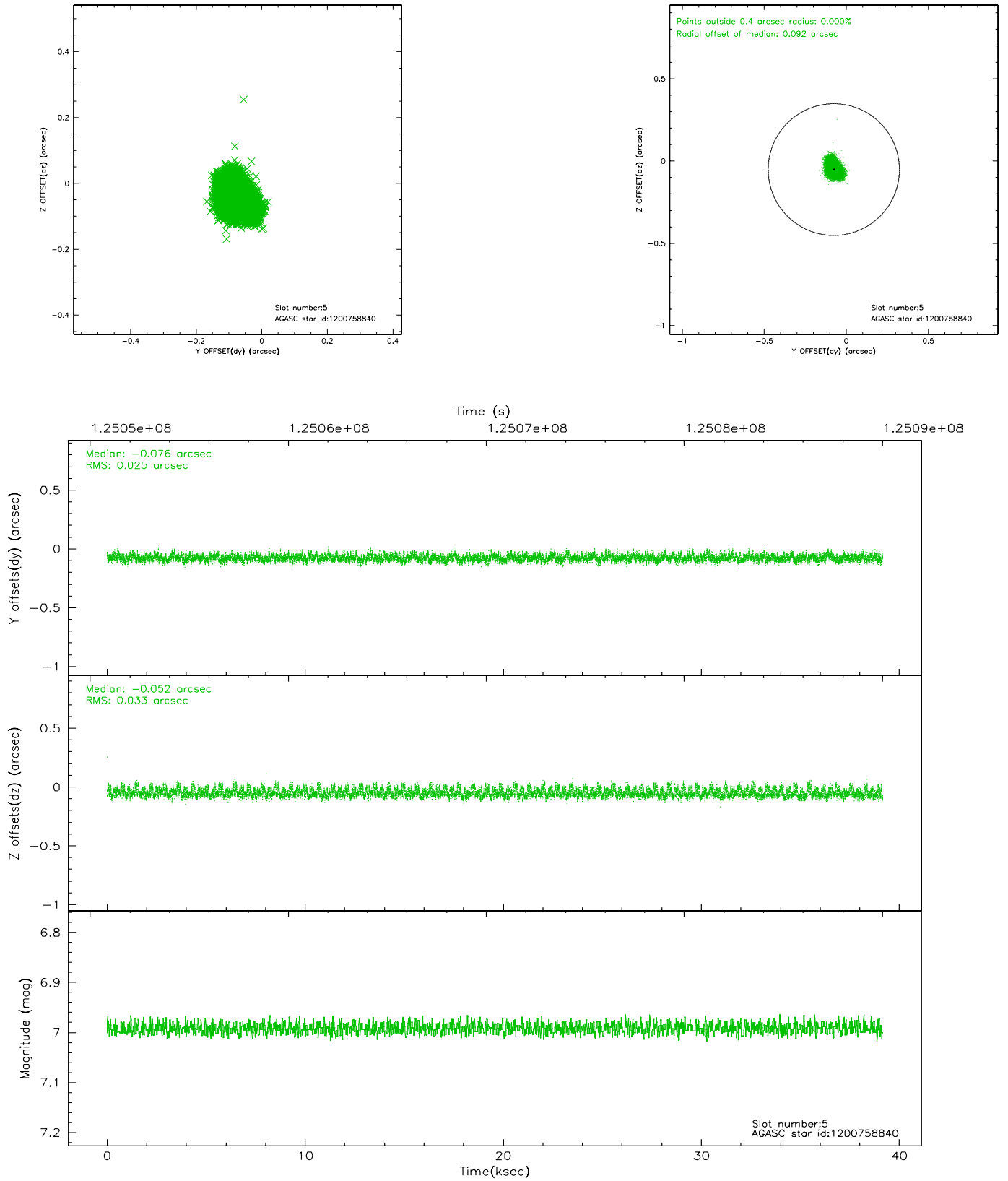
2.4.1 Slot 3



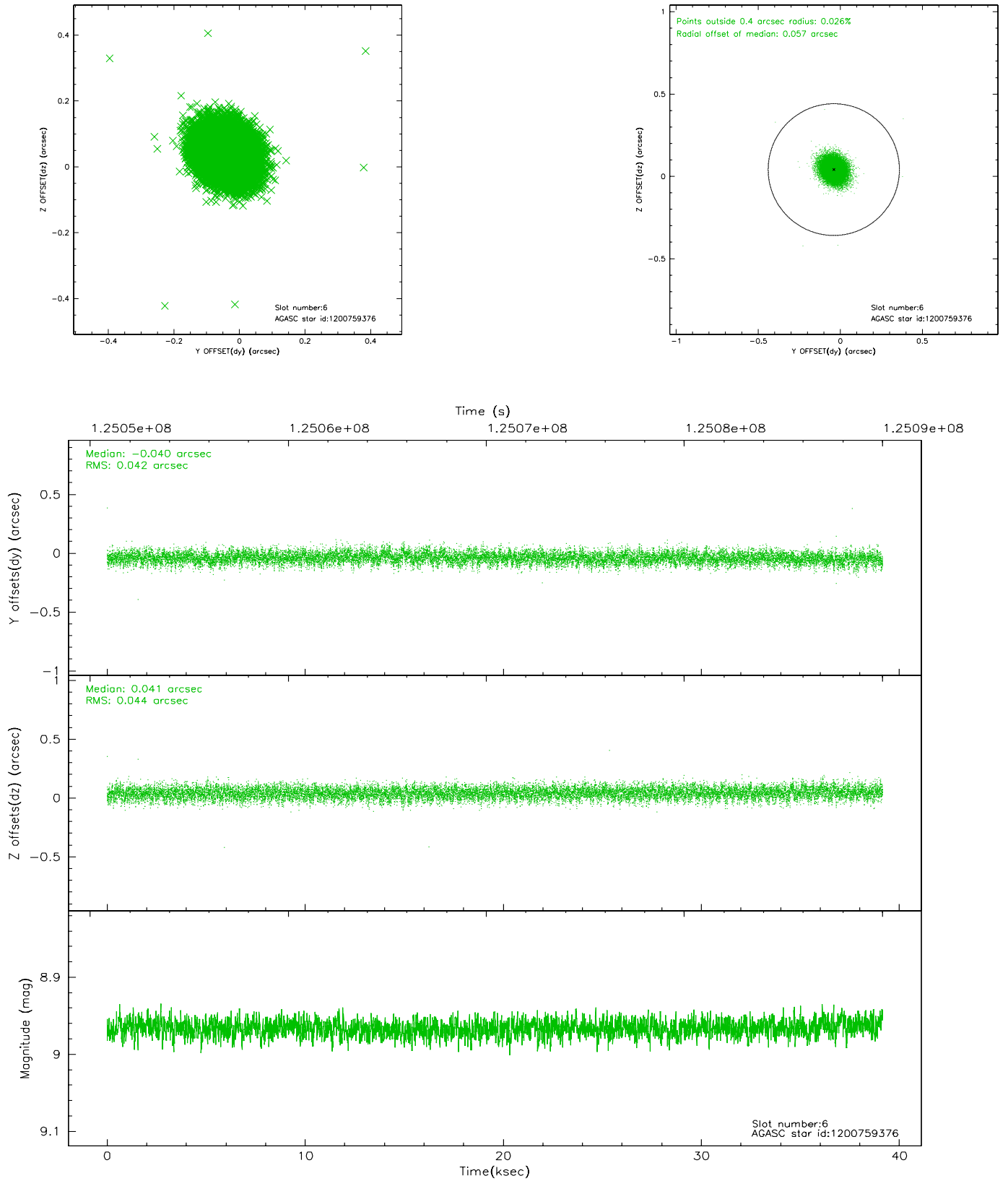
2.4.2 Slot 4



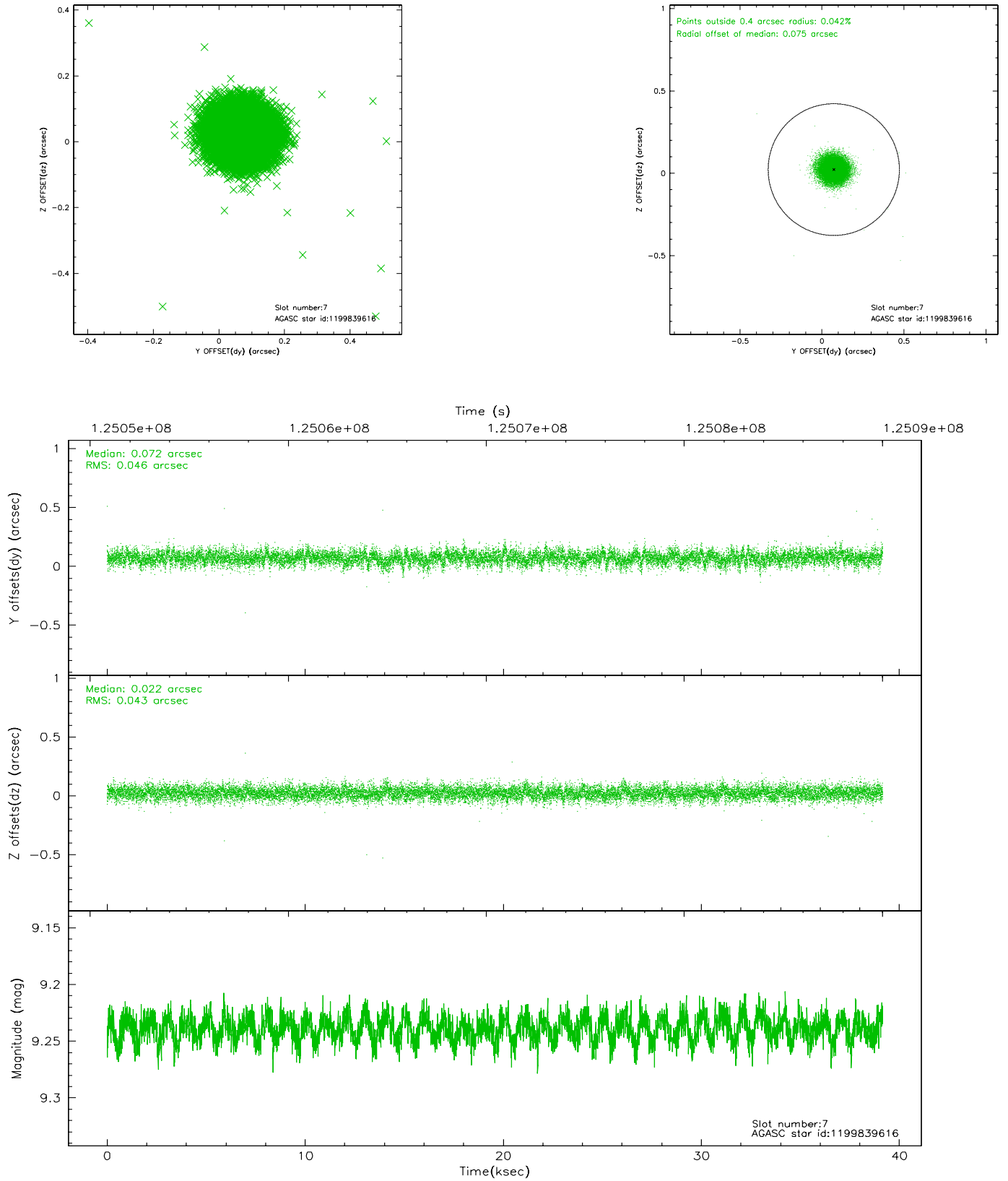
2.4.3 Slot 5



2.4.4 Slot 6

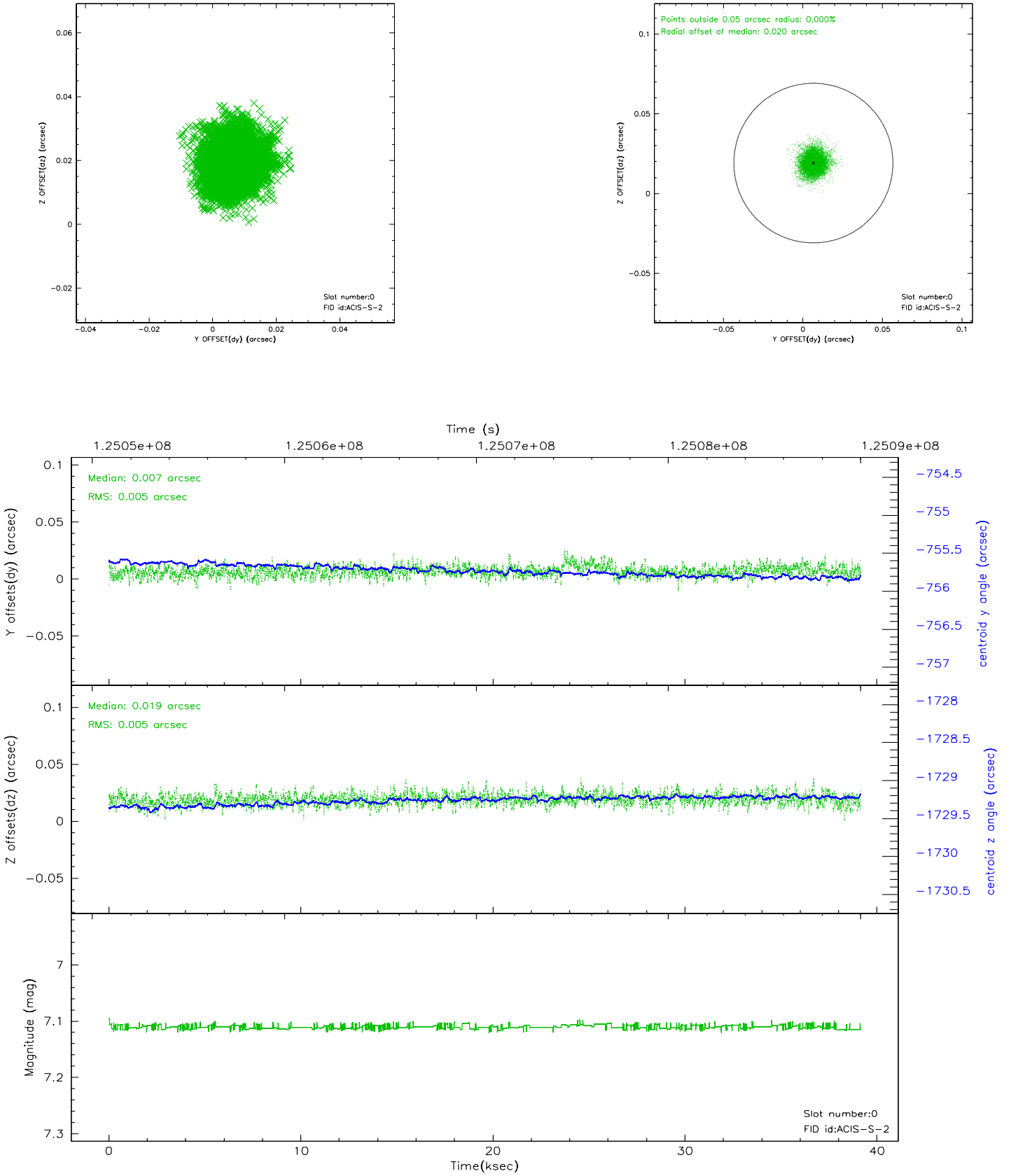


2.4.5 Slot 7

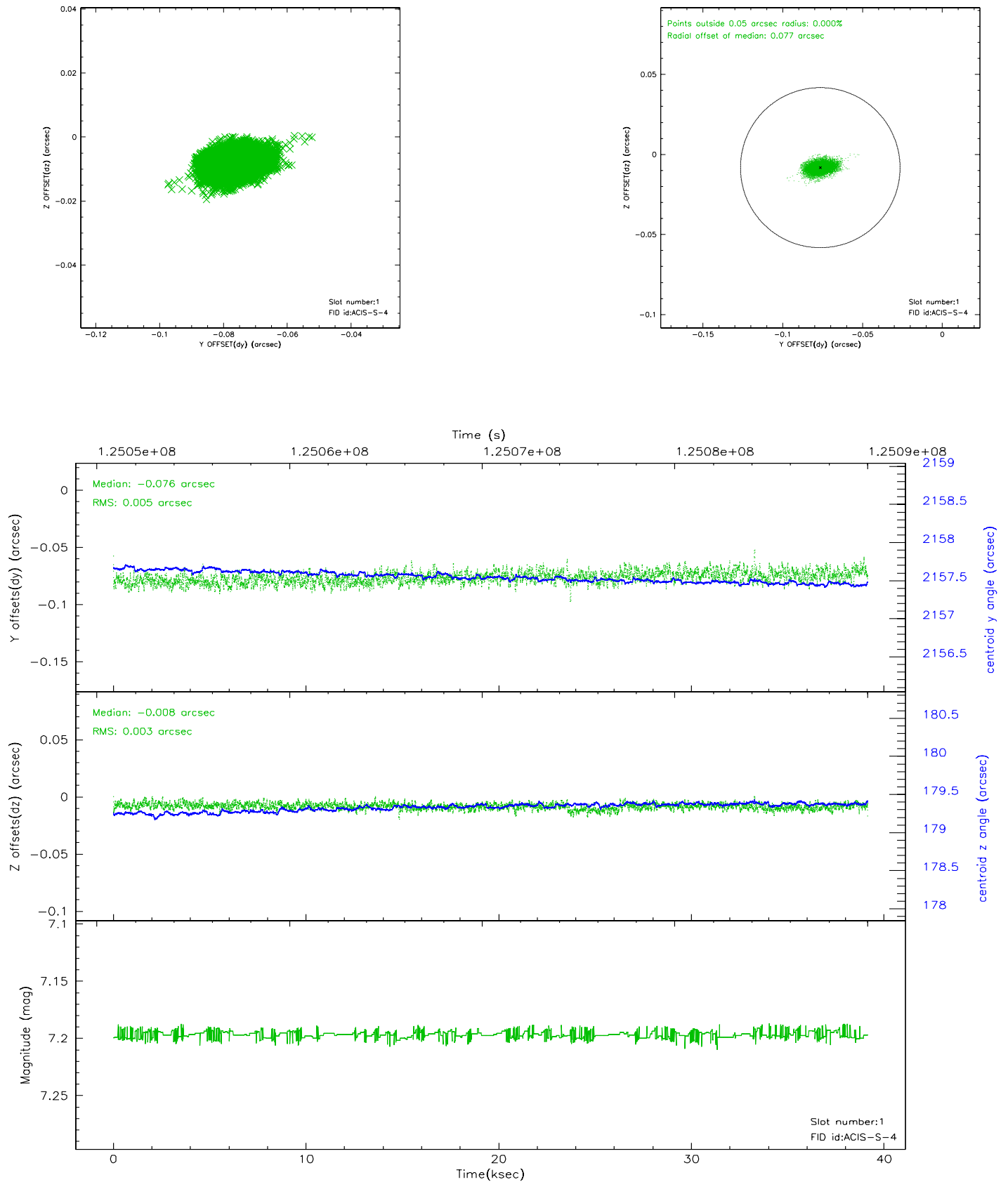


2.5 FID Slots

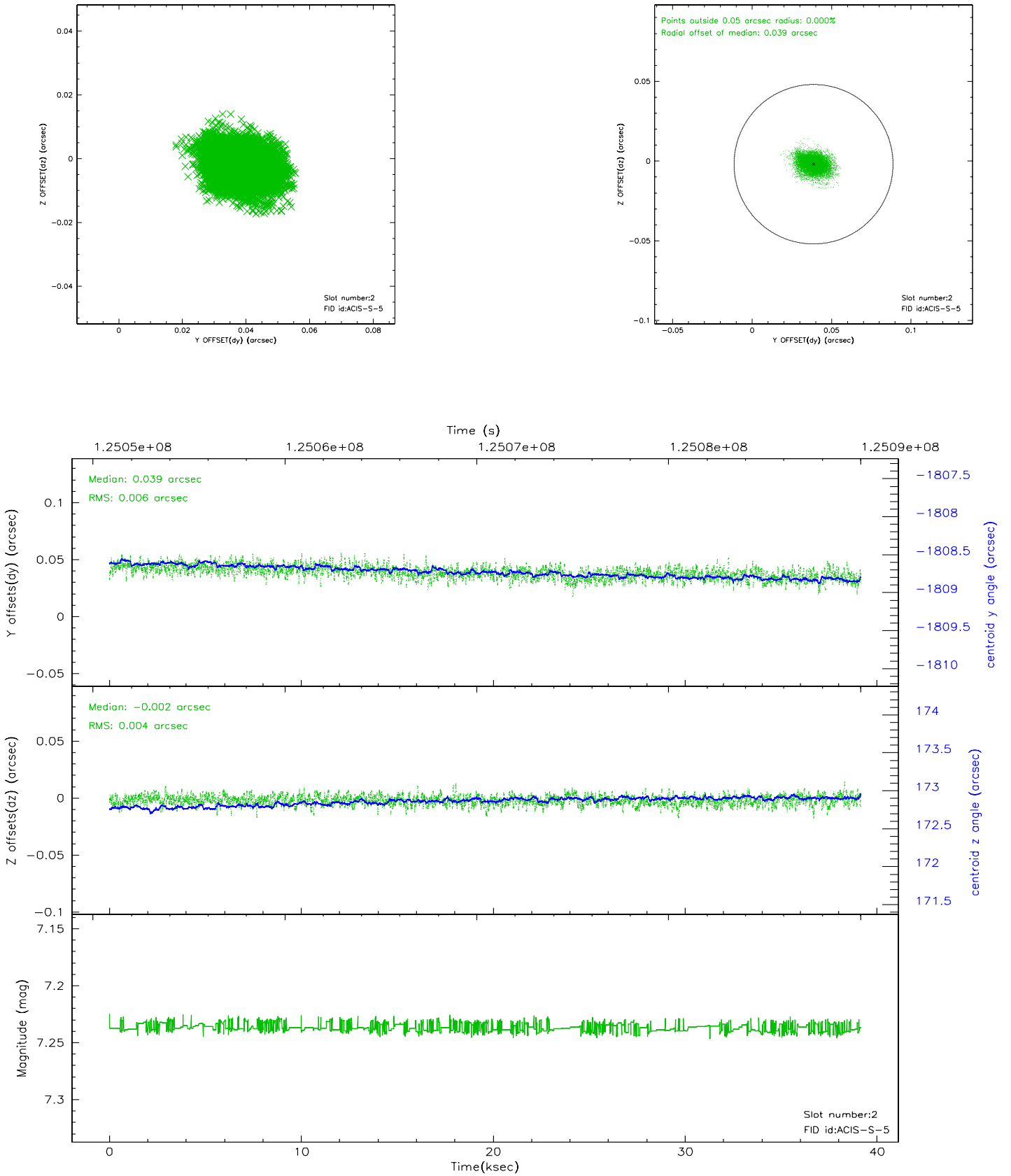
2.5.1 Slot 0



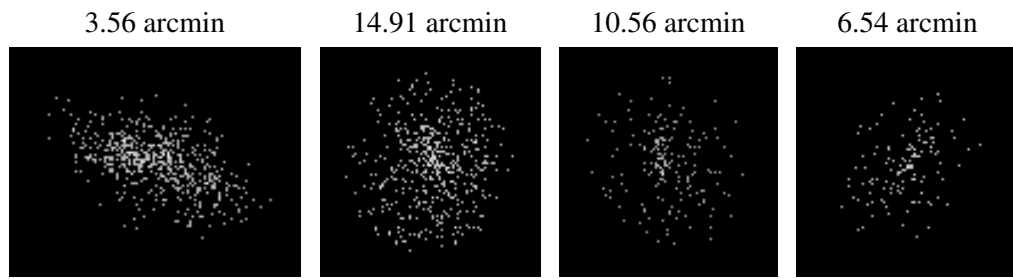
2.5.2 Slot 1



2.5.3 Slot 2



3 Point Sources



A Summary

A.1 Status

V&V Scientist	Beth Sundheim
V&V Date (YYYY-MM-DD)	2007.01.18
V&V Edition	1
V&V Disposition and Status	OK
V&V Charge Time	39.153

A.2 Comments