

V&V Reference Report

L2 ASCDS Version : 8.4.5

Observation 1989 - L2 Version 3
Chandra X-Ray Center

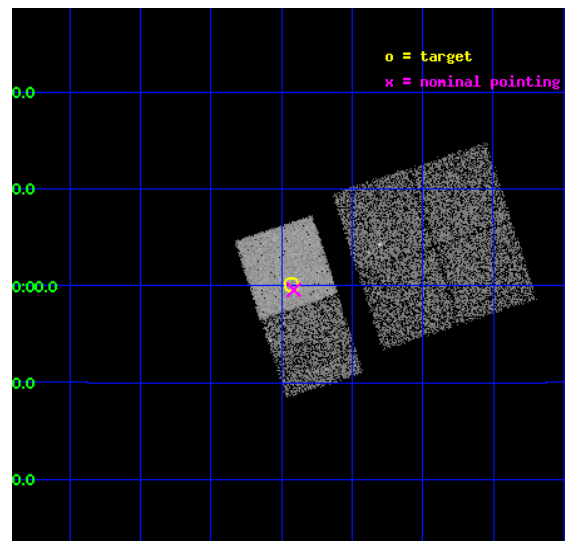
L2 Processing Date : Sep 22 2012

Contents

1	Front	2
2	OBI	3
2.1	OBI	3
2.1.1	Images	3
2.1.2	Bias	3
2.1.3	Parameters	4
2.1.4	Events	4
2.2	Compared Parameters	5
2.3	Aspect	6
2.4	Star Slots	9
2.4.1	Slot 3	9
2.4.2	Slot 4	10
2.4.3	Slot 5	11
2.4.4	Slot 6	12
2.4.5	Slot 7	13
2.5	FID Slots	14
2.5.1	Slot 0	14
2.5.2	Slot 1	15
2.5.3	Slot 2	16
A	Summary	17
A.1	Status	17
A.2	Comments	17

1 Front

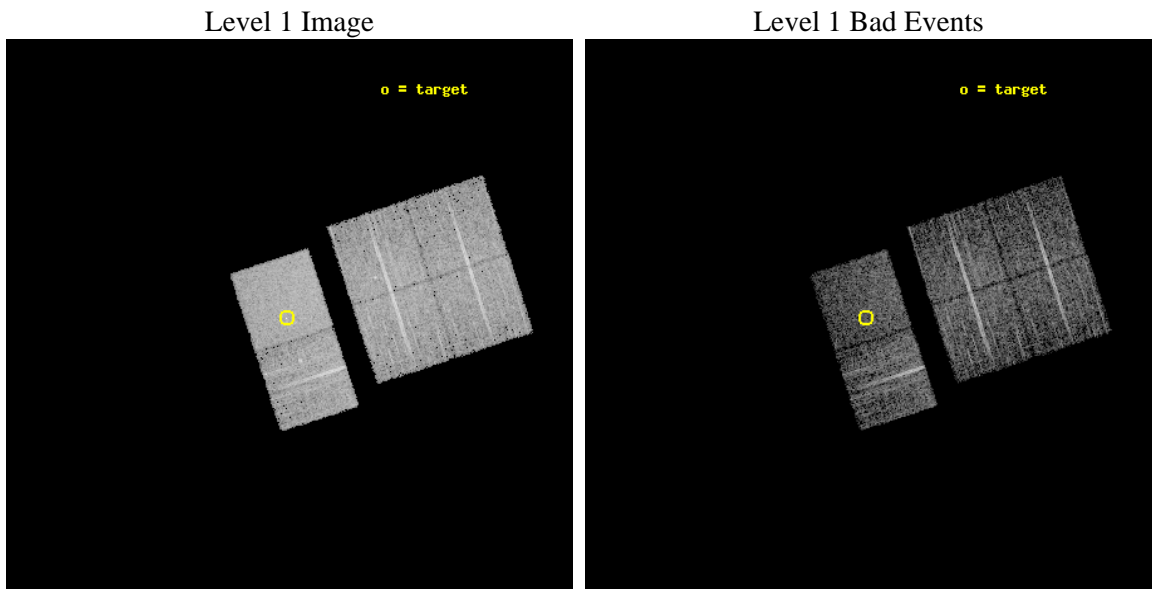
seq_num	500166	Sequence number
obs_id	1989	Observation id
title	SEARCHING FOR X-RAYS FROM THE NEWLY DISCOVERED YOUNG PULSAR J1740+1000	Proposal title
observer	Zaven Arzoumanian	Principal investigator
object	PSR J1740+1000	Source name
dtcycle	0	
cycle	P	events from which exps? Prim/Second/Both
ra_targ	265.107917	Observer's specified target RA [deg]
dec_targ	10.001722	Observer's specified target Dec [deg]
ra_nom	265.10325435028	Nominal RA [deg]
dec_nom	9.9931461985637	Nominal Dec [deg]
roll_nom	251.90068908761	Nominal Roll [deg]
revision	3	Processing version of data
ontime	5148.8000047803	Sum of GTIs [s]
livetime	5083.6027988846	Livetime [s]
ontime0	5148.8000047803	Sum of GTIs [s]
ontime1	5148.6387315094	Sum of GTIs [s]
ontime2	5148.6797715127	Sum of GTIs [s]
ontime3	5148.720811516	Sum of GTIs [s]
ontime6	5148.7618515044	Sum of GTIs [s]
ontime7	5148.8000047803	Sum of GTIs [s]
l2events	43856	Number of level 2 events



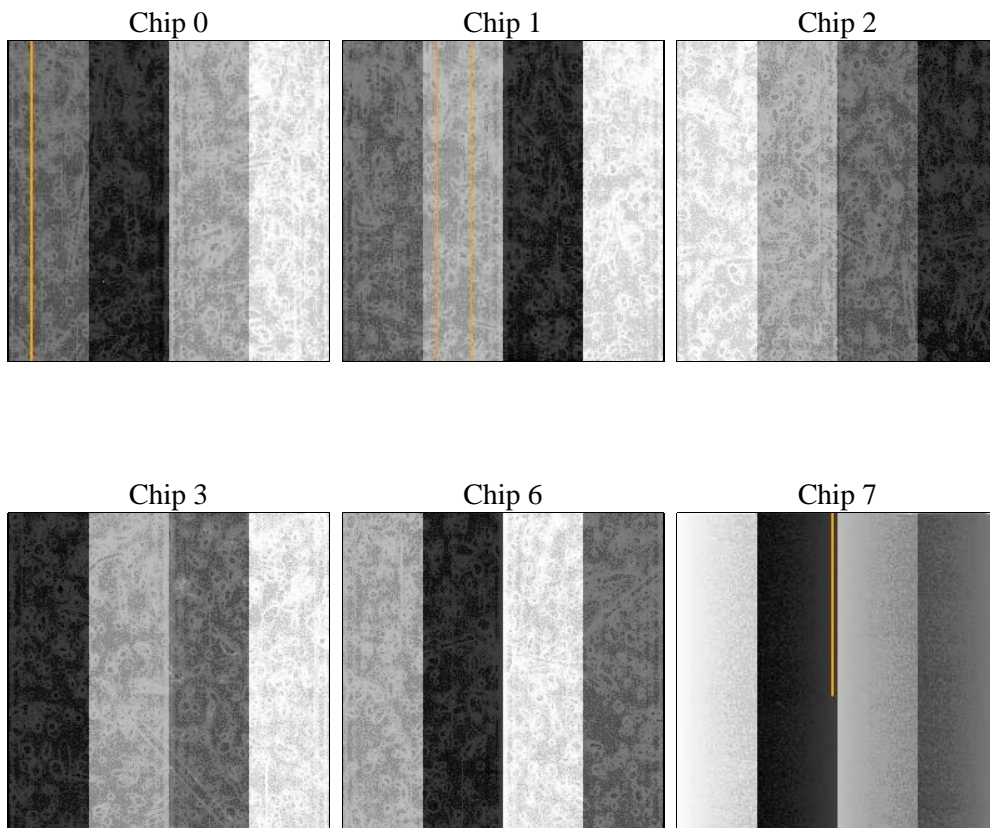
2 OBI

2.1 OBI

2.1.1 Images



2.1.2 Bias



2.1.3 Parameters

obi_num	0	Obi number	sched_exp_time	5200.000000	[s] Scheduled observation exposure time
ascdsver	8.4.5	Processing system revision	ontime	5148.8000047803	Sum of GTIs [s]
caldsver	4.5.1.1	 	ontime0	5148.8000047803	Sum of GTIs [s]
date	2012-09-22T07:37:07	Date and time of file creation	ontime1	5148.6387315094	Sum of GTIs [s]
revision	3	Processing version of data	ontime2	5148.6797715127	Sum of GTIs [s]
			ontime3	5148.720811516	Sum of GTIs [s]
			ontime6	5148.7618515044	Sum of GTIs [s]
			ontime7	5148.8000047803	Sum of GTIs [s]
			l1events	228831	Number of level 1 events

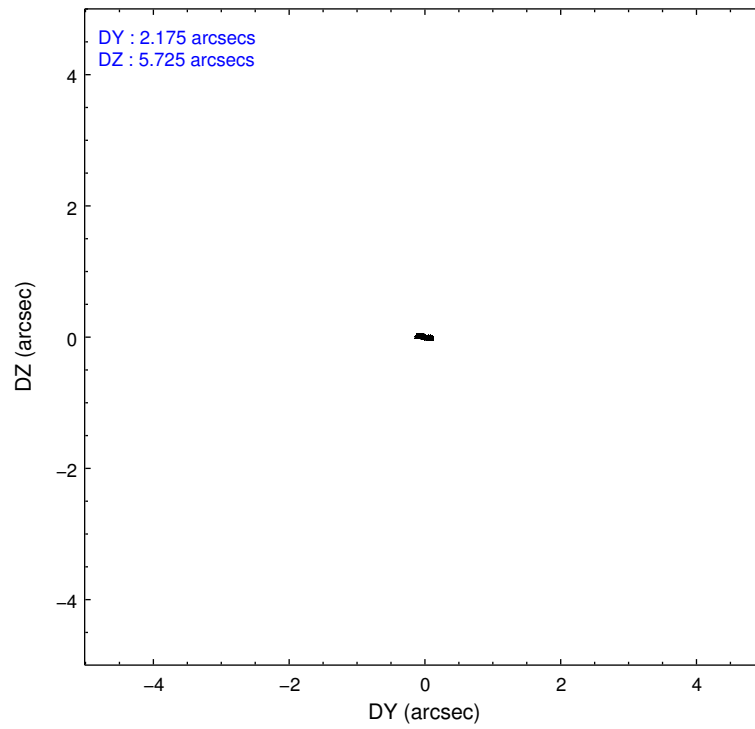
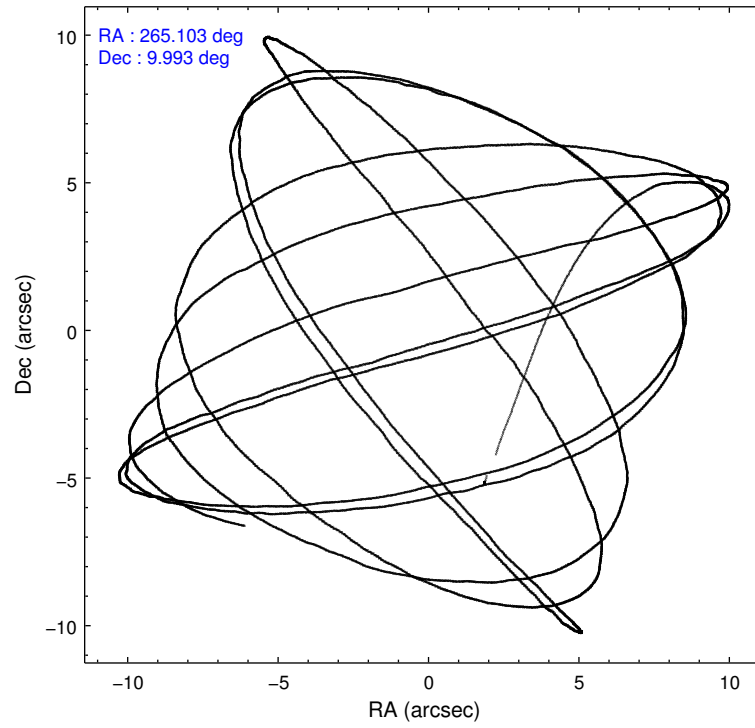
2.1.4 Events

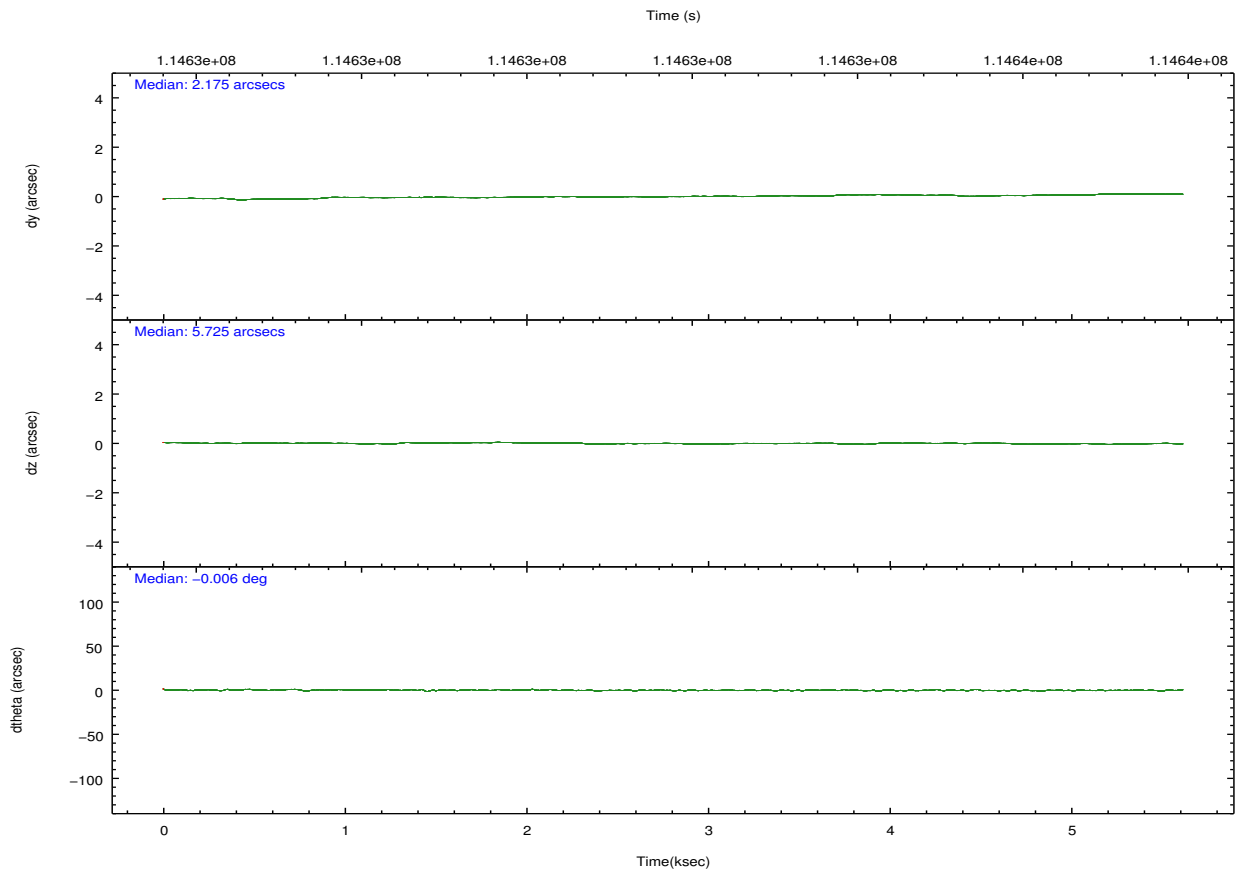
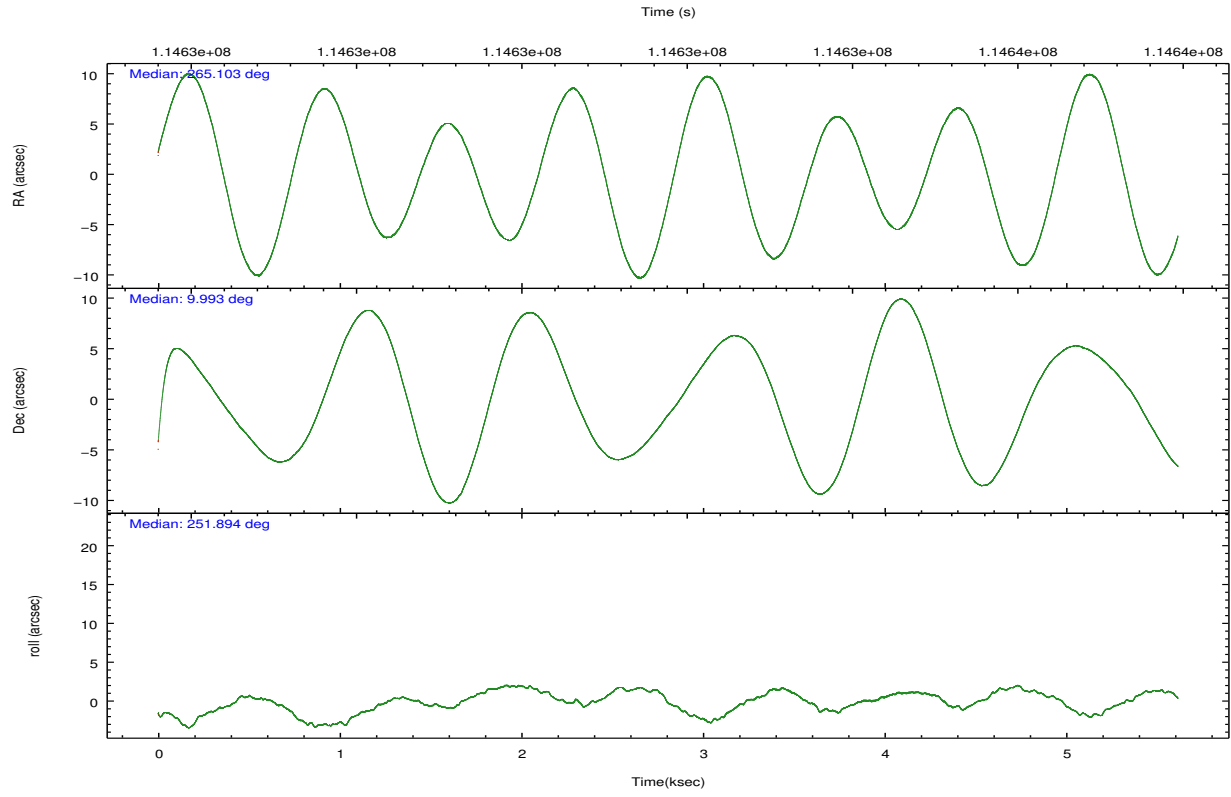
	ccd 0	ccd 1	ccd 2	ccd 3	ccd 6	ccd 7		ccd 0	ccd 1	ccd 2	ccd 3	ccd 6	ccd 7
level 1 events	35125	32343	37892	37308	39586	46577	grade 0 events	2417	2321	2437	2575	2912	2409
rejected events	29848	27034	32767	32057	33778	25206		6%	7%	6%	6%	7%	5%
rejected %	84%	83%	86%	85%	85%	54%	grade 1 events	19	24	11	14	27	53
								0%	0%	0%	0%	0%	0%
							grade 2 events	1176	1070	1117	1011	1130	4277
								3%	3%	2%	2%	2%	9%
							grade 3 events	430	483	357	413	448	2035
								1%	1%	0%	1%	1%	4%
							grade 4 events	403	497	413	395	417	1939
								1%	1%	1%	1%	1%	4%
							grade 5 events	1223	1301	1180	1270	1404	4230
								3%	4%	3%	3%	3%	9%
							grade 6 events	855	943	804	858	906	10718
								2%	2%	2%	2%	2%	23%
							grade 7 events	28602	25704	31573	30772	32342	20916
								81%	79%	83%	82%	81%	44%

2.2 Compared Parameters

Parameter	Planned	Actual	Parameter	Planned	Actual
Instrument	ACIS	ACIS	Obspar format version number	7	7
Detector	ACIS-012367	ACIS-012367	Obspar file type	PREDICTED	ACTUAL
Grating	NONE	NONE	Obspar update status	NONE	UPDATED
Data mode	FAINT	FAINT	Number of optional ACIS chips dropped	0	0
Observation mode	POINTING	POINTING	On-chip summing requested	N	N
[deg] Pointing RA	265.097209	265.103254350284	Subarray requested	NONE	NONE
[deg] Pointing Dec	10.019772	9.9931461985637	Alternating exposures requested	N	N
[deg] Pointing Roll	251.745111	251.9006890876059	[s] Primary exposure time	0.000000	3.2
[mm] SIM focus pos	-0.684267	-0.6828225247311905			
[mm] SIM defocus	0	0.001444936568705701			
[mm] SIM translation stage pos	-190.132523	-190.1425803651734			
[mm] SIM translation stage offset	0	0.01005778216563158			
[s] Observation start time (MET)	114630493.184000	114629416.88779			
Observation start date	2001-08-19T17:47:09	2001-08-19T17:30:16			
[s] Observation end time (MET)	114635693.184000	114635826.72554			
Observation end date	2001-08-19T19:13:49	2001-08-19T19:17:06			
Read mode	TIMED	TIMED			

2.3 Aspect



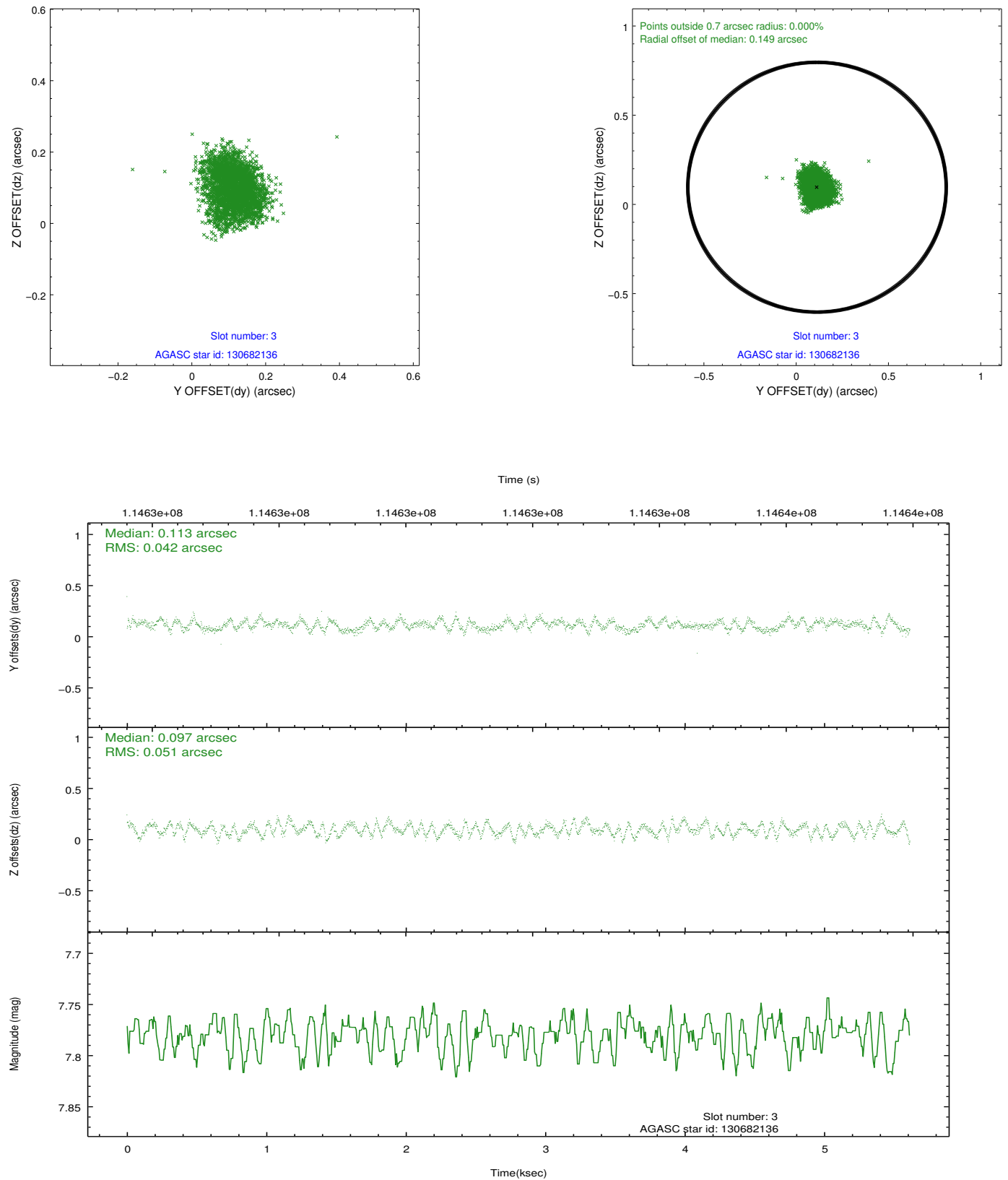


Slot Statistics

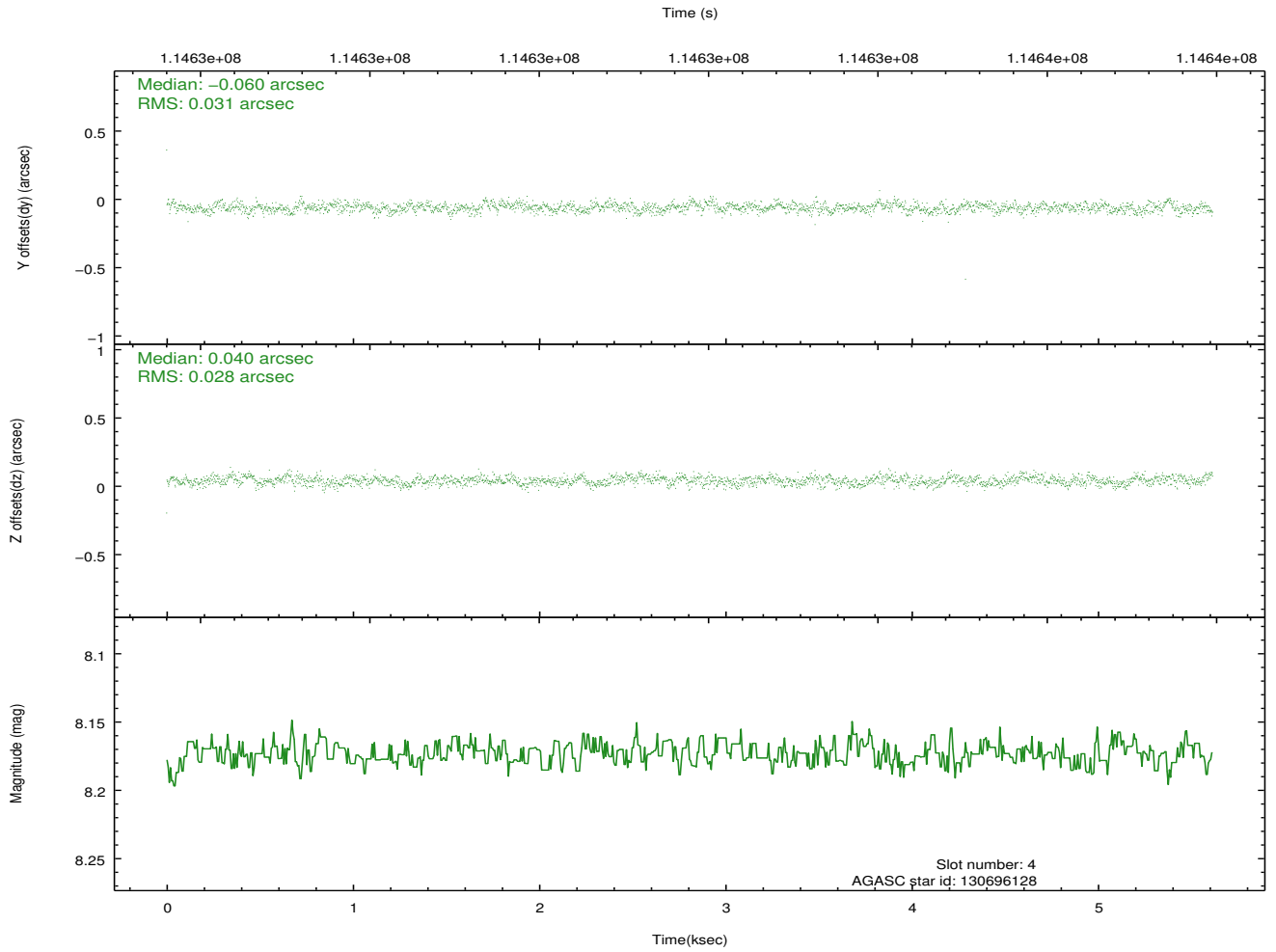
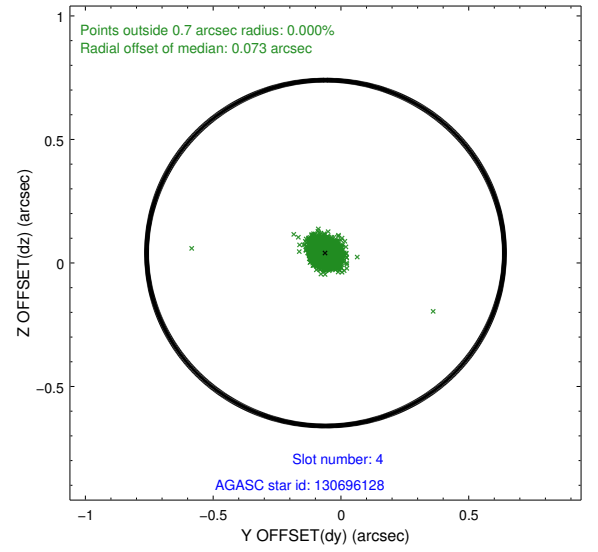
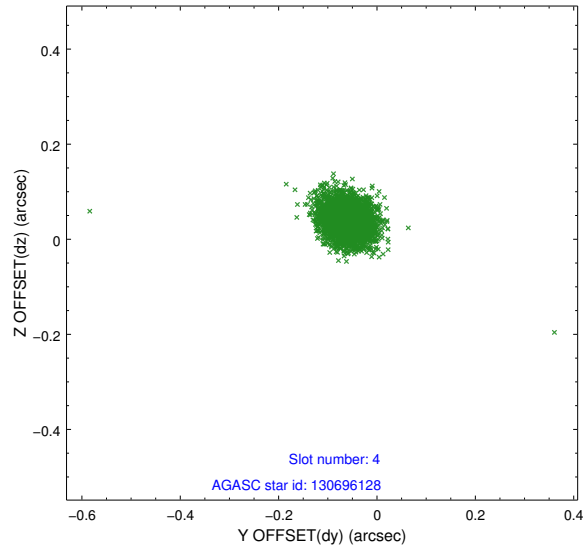
slot	status	id	mag	n_pts	med_dy	med_dz	dr1	dr2	ra	dec	mean_y	mean_z
0	FID	ACIS-S-2	7.11	1370	-0.040	0.001	0.006	0.010	0.000000	0.000000	-754.79	-1726.82
1	FID	ACIS-S-4	7.20	1369	-0.027	0.019	0.006	0.011	0.000000	0.000000	2157.97	180.66
2	FID	ACIS-S-5	7.24	1370	0.036	-0.011	0.007	0.012	0.000000	0.000000	-1806.23	175.40
3	GUIDE	130682136	7.78	2740	0.113	0.097	0.072	0.109	265.593767	9.449551	1396.44	2318.08
4	GUIDE	130696128	8.17	2740	-0.060	0.040	0.042	0.069	265.572442	10.443023	-1974.27	1121.39
5	GUIDE	130688752	8.59	2740	-0.067	-0.087	0.054	0.086	265.448008	10.564793	-2253.06	564.81
6	GUIDE	130685880	8.50	2740	0.065	-0.015	0.052	0.086	264.710749	9.543534	2057.19	-765.24
7	GUIDE	130679984	9.37	2736	-0.050	-0.028	0.100	0.159	264.489824	10.230265	-45.88	-2281.32

2.4 Star Slots

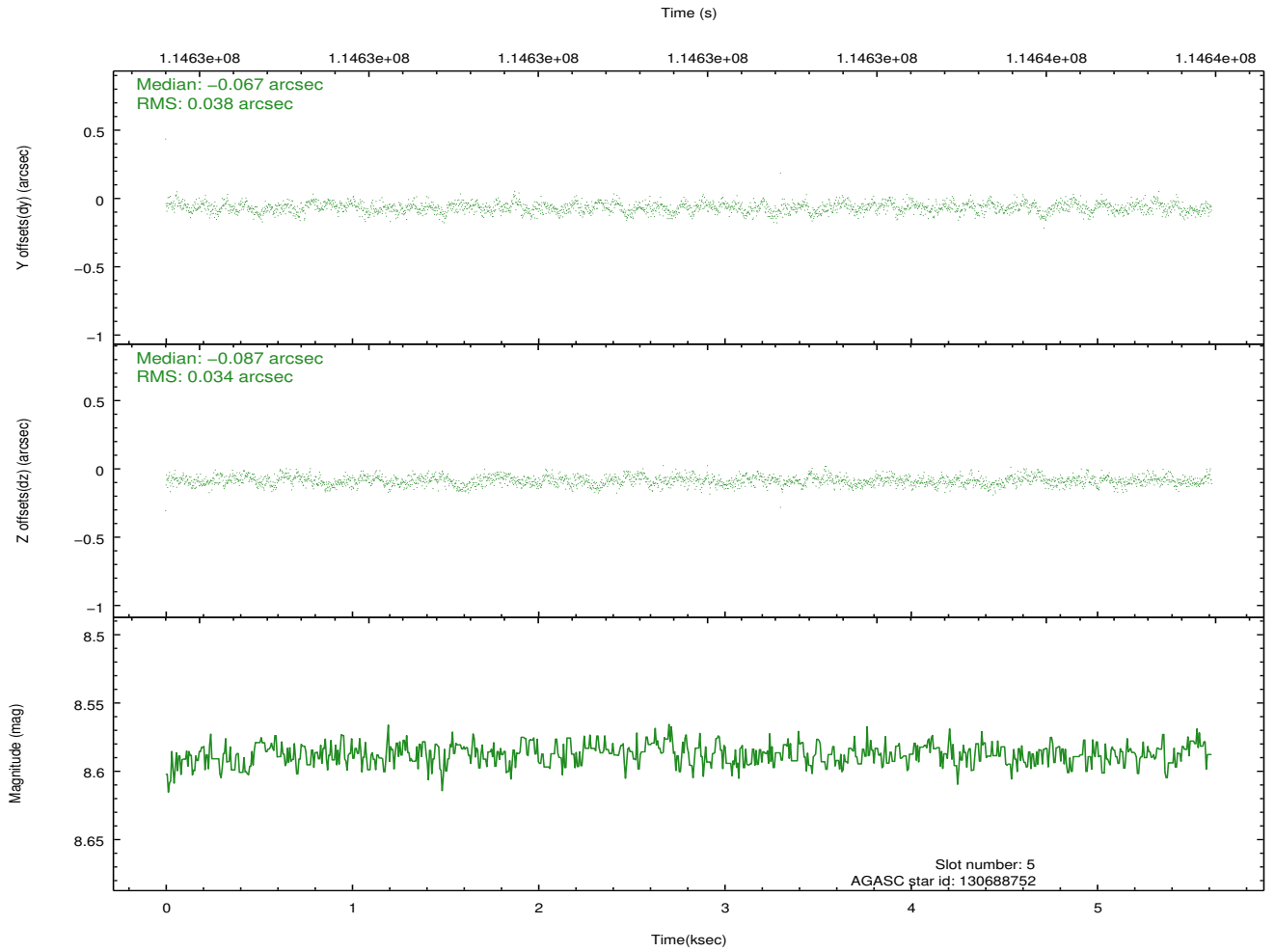
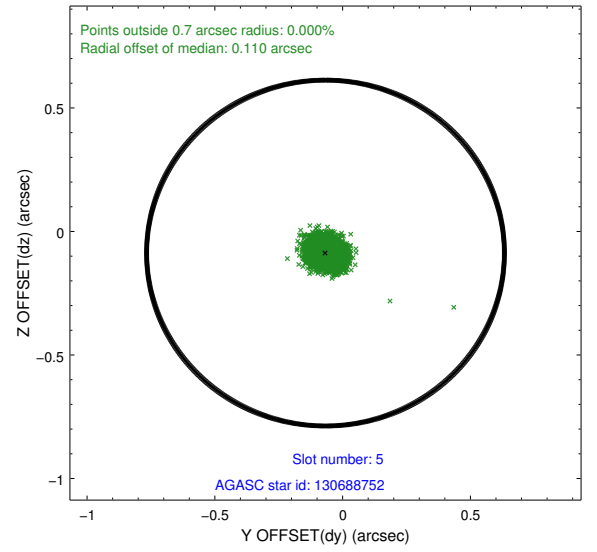
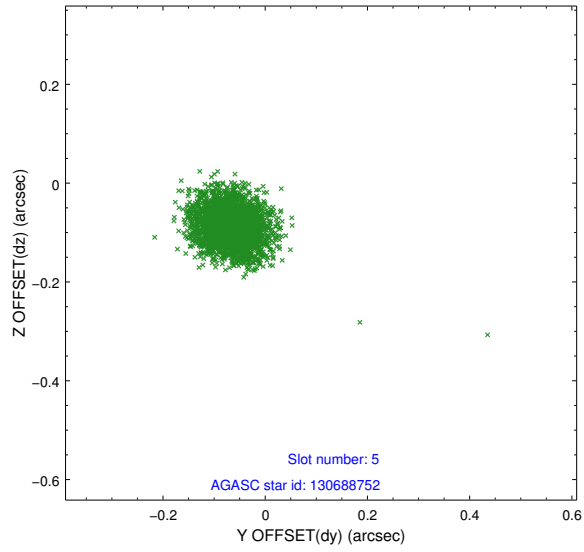
2.4.1 Slot 3



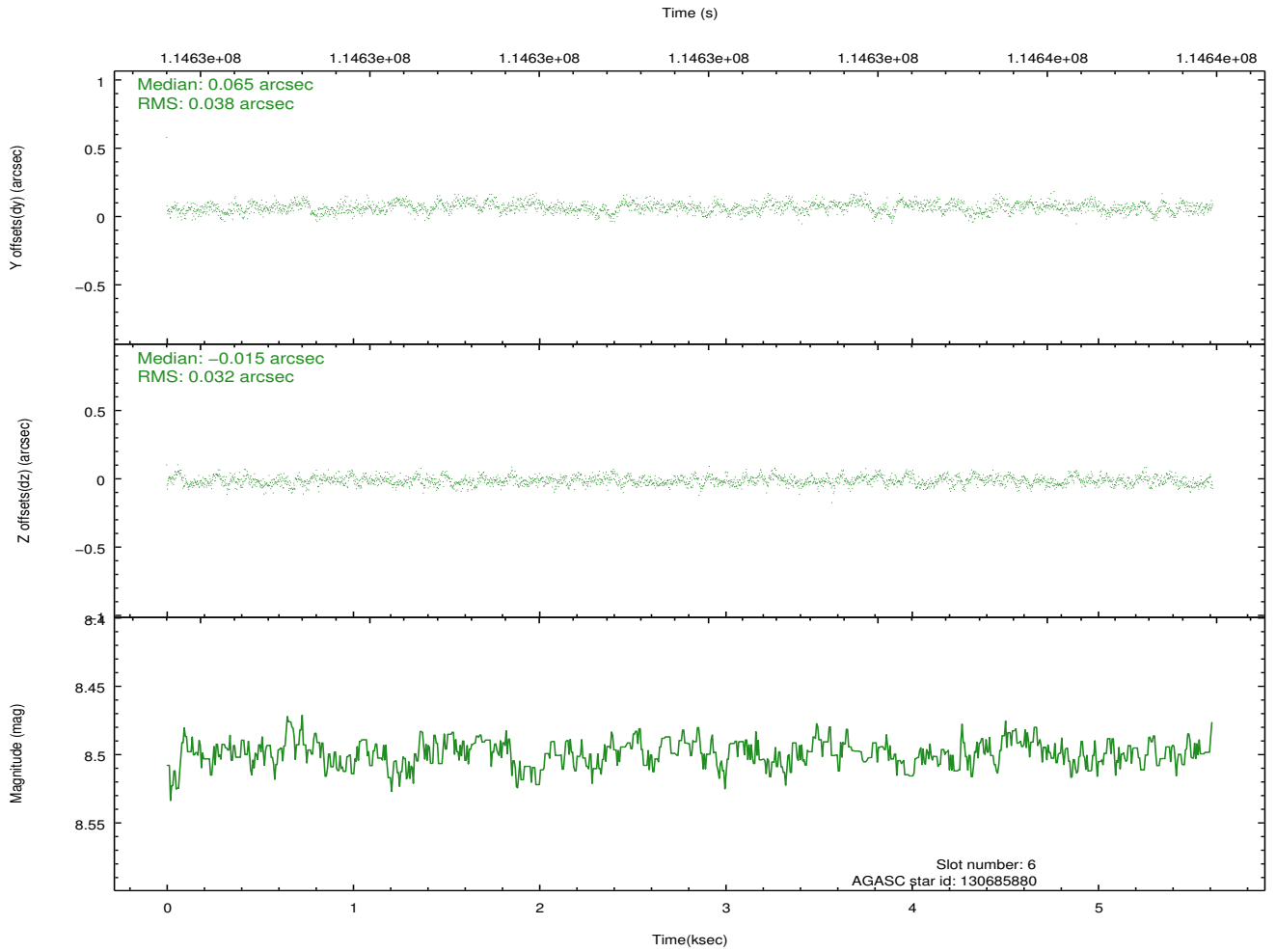
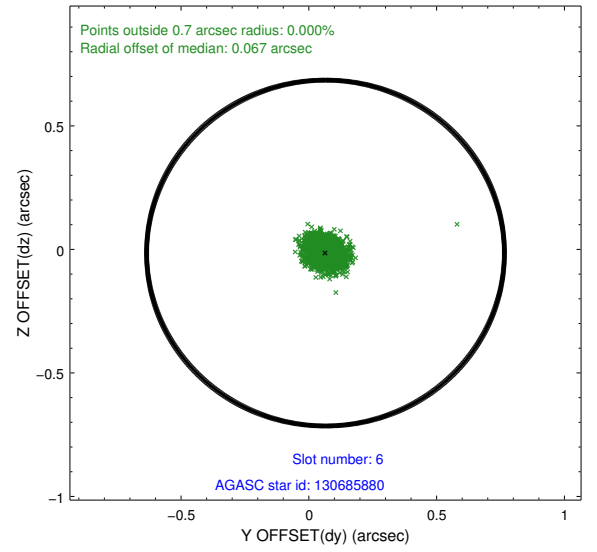
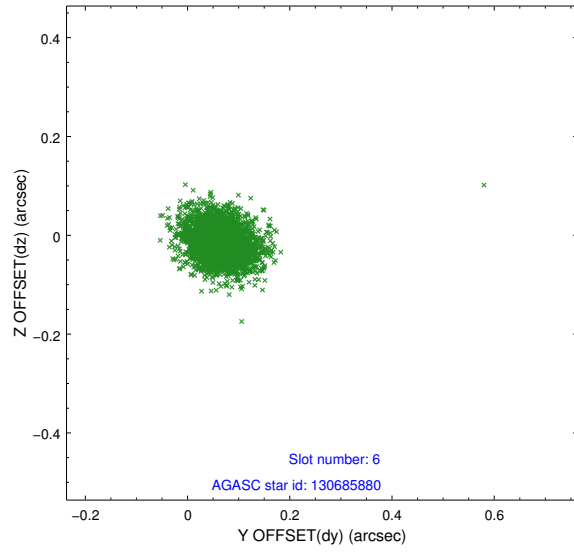
2.4.2 Slot 4



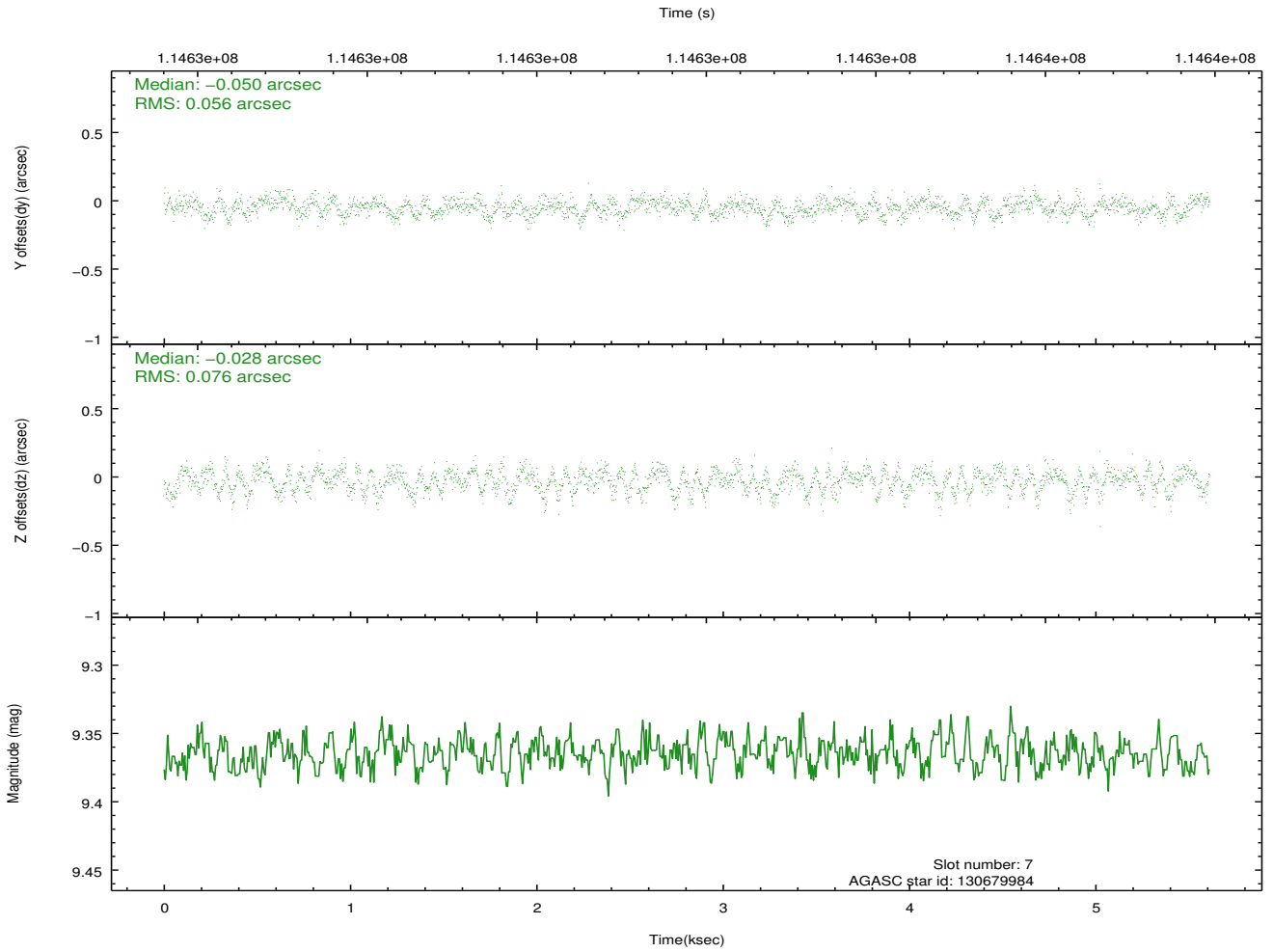
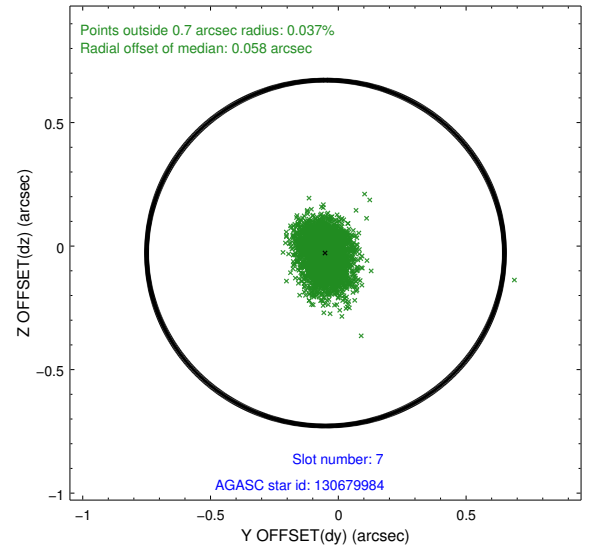
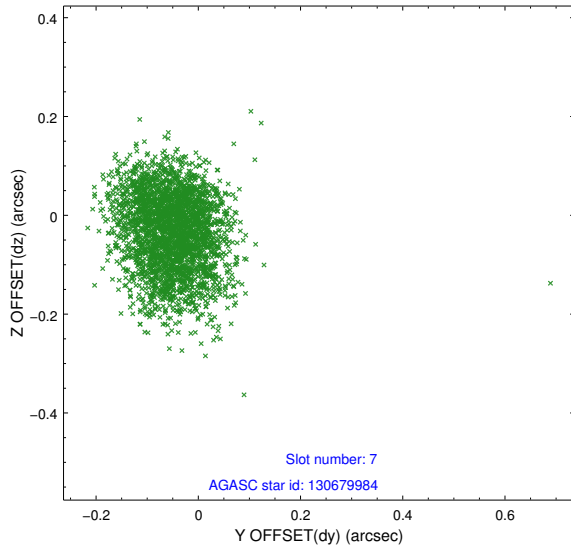
2.4.3 Slot 5



2.4.4 Slot 6

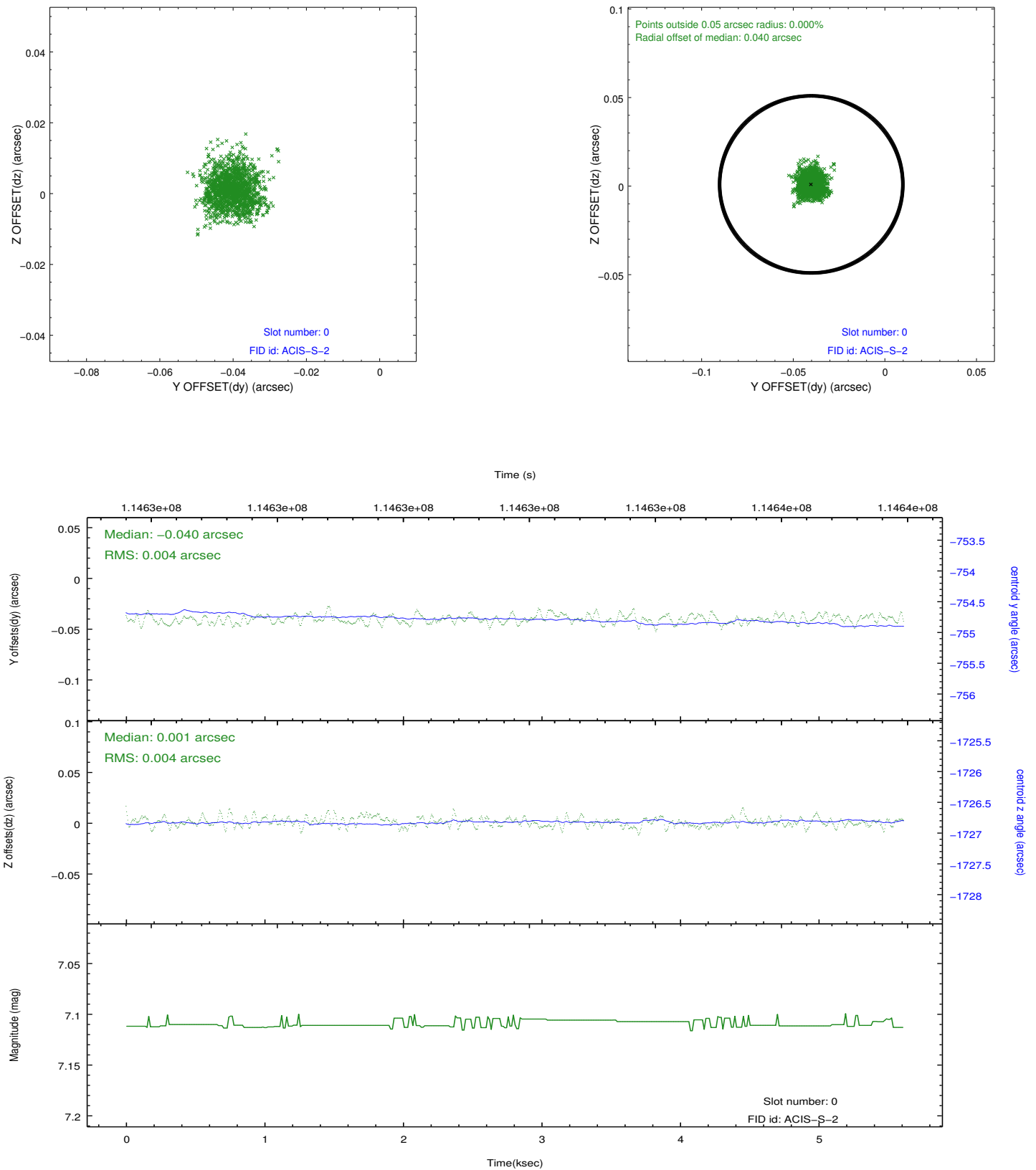


2.4.5 Slot 7

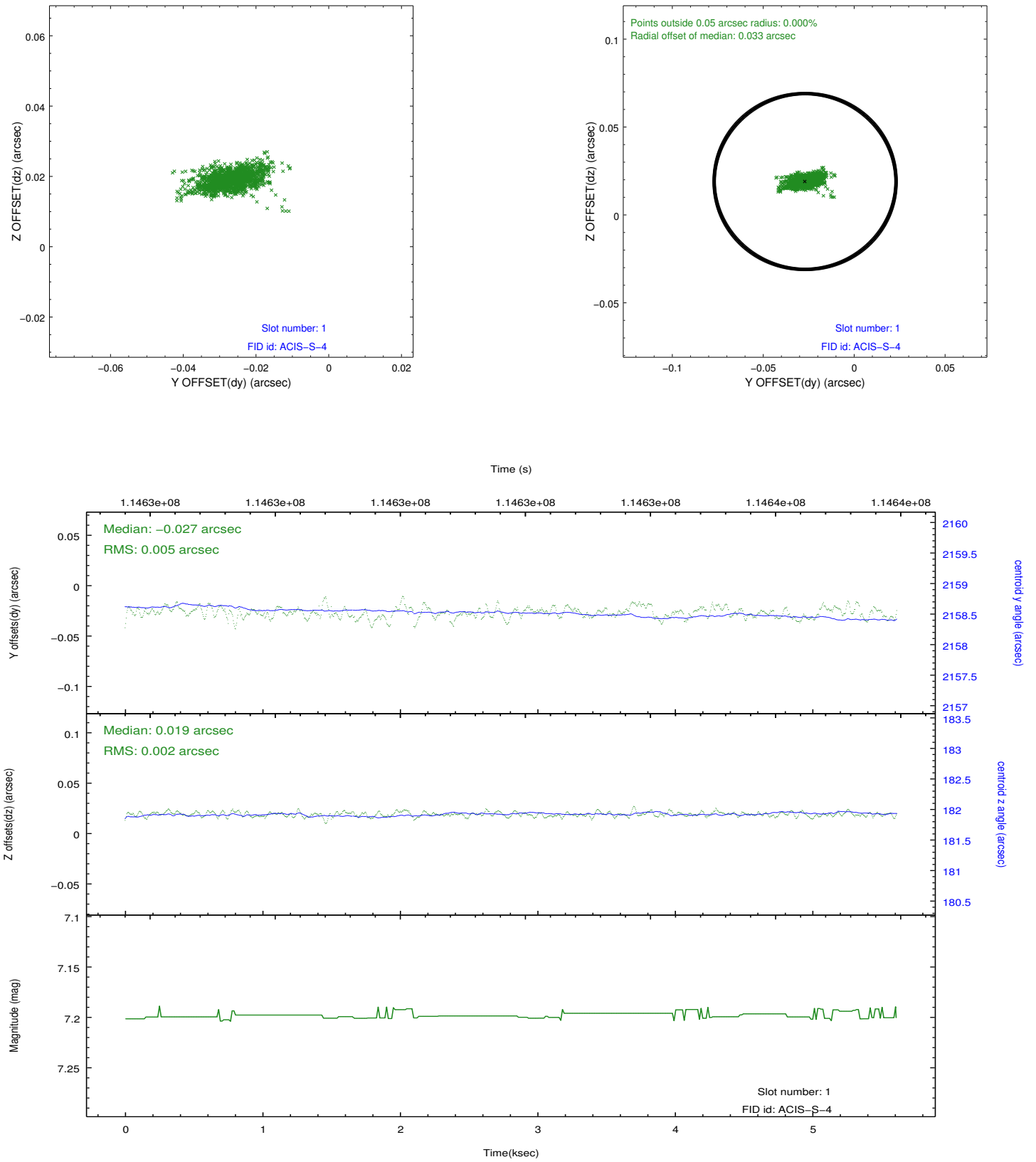


2.5 FID Slots

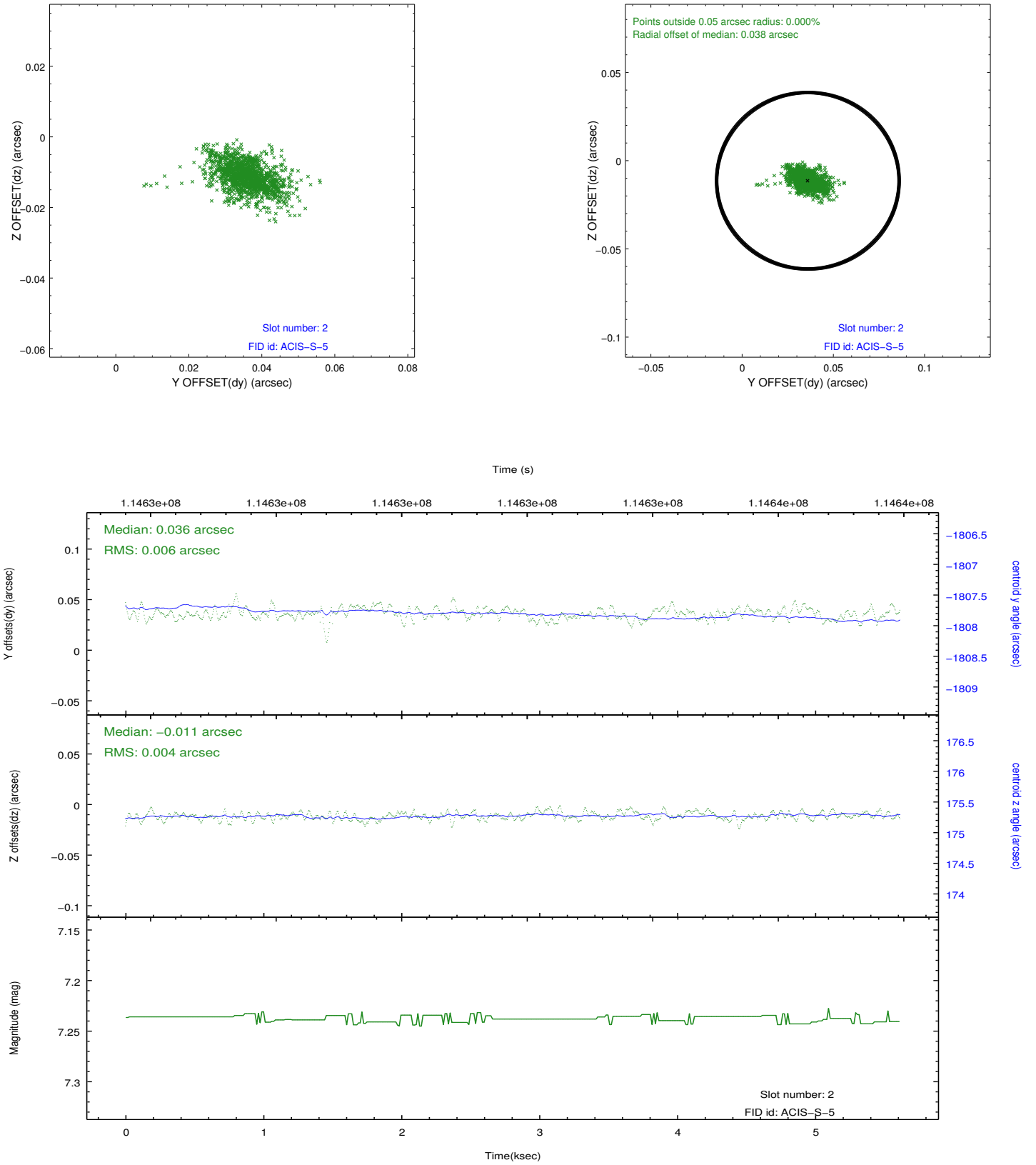
2.5.1 Slot 0



2.5.2 Slot 1



2.5.3 Slot 2



A Summary

A.1 Status

V&V Scientist	Beth Sundheim
V&V Date (YYYY-MM-DD)	2012.09.25
V&V Edition	1
V&V Disposition and Status	OK
V&V Charge Time	5.152

A.2 Comments