

V&V Reference Report

L2 ASCDS Version : 8.4.5

Observation 1971 - L2 Version 3
Chandra X-Ray Center

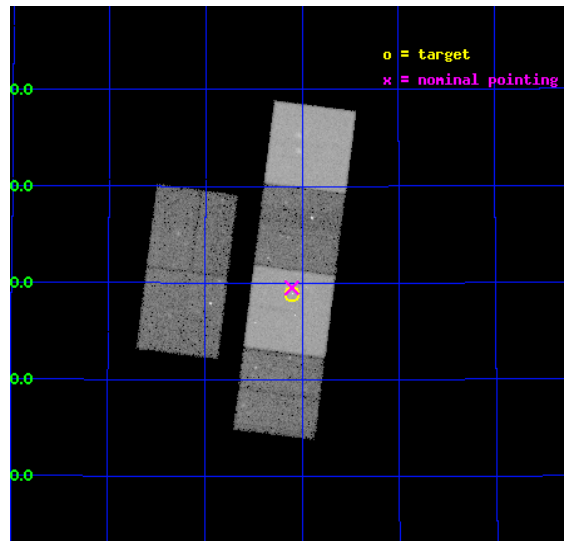
L2 Processing Date : Sep 6 2012

Contents

1	Front	2
2	OBI	3
2.1	OBI	3
2.1.1	Images	3
2.1.2	Bias	3
2.1.3	Parameters	4
2.1.4	Events	4
2.2	Compared Parameters	5
2.3	Aspect	6
2.4	Star Slots	9
2.4.1	Slot 3	9
2.4.2	Slot 4	10
2.4.3	Slot 5	11
2.4.4	Slot 6	12
2.4.5	Slot 7	13
2.5	FID Slots	14
2.5.1	Slot 0	14
2.5.2	Slot 1	15
2.5.3	Slot 2	16
A	Summary	17
A.1	Status	17
A.2	Comments	17

1 Front

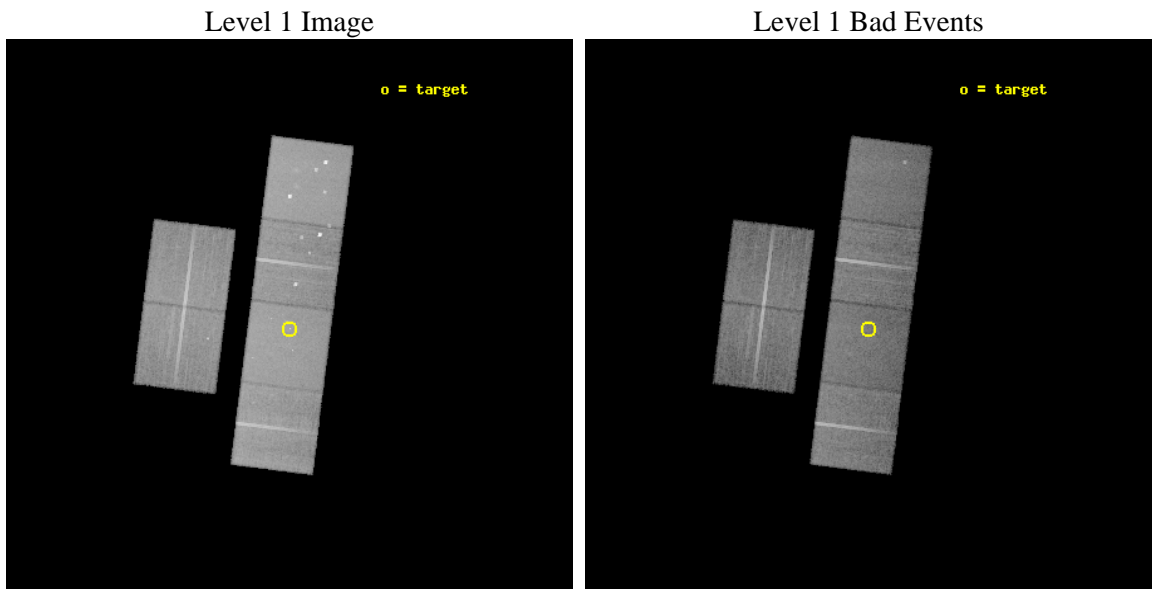
seq_num	500148	Sequence number
obs_id	1971	Observation id
title	CONTINUING CHANDRA OBSERVATIONS OF THE X-RAY SUPERNOVAE SN 1999EM AND SN 1998S	Proposal title
observer	Prof. Walter Lewin	Principal investigator
object	SN 1998S	Source name
dtcycle	0	
cycle	P	events from which exps? Prim/Second/Both
ra_targ	176.525417	Observer's specified target RA [deg]
dec_targ	47.482167	Observer's specified target Dec [deg]
ra_nom	176.52622207743	Nominal RA [deg]
dec_nom	47.491972863401	Nominal Dec [deg]
roll_nom	97.20859793569	Nominal Roll [deg]
revision	3	Processing version of data
ontime	29551.561410993	Sum of GTIs [s]
livetime	29177.361746593	Livetime [s]
ontime2	29551.602450997	Sum of GTIs [s]
ontime3	29551.438290998	Sum of GTIs [s]
ontime5	29551.52037099	Sum of GTIs [s]
ontime6	29551.479331002	Sum of GTIs [s]
ontime7	29551.561410993	Sum of GTIs [s]
ontime8	29551.397250995	Sum of GTIs [s]
l2events	290481	Number of level 2 events



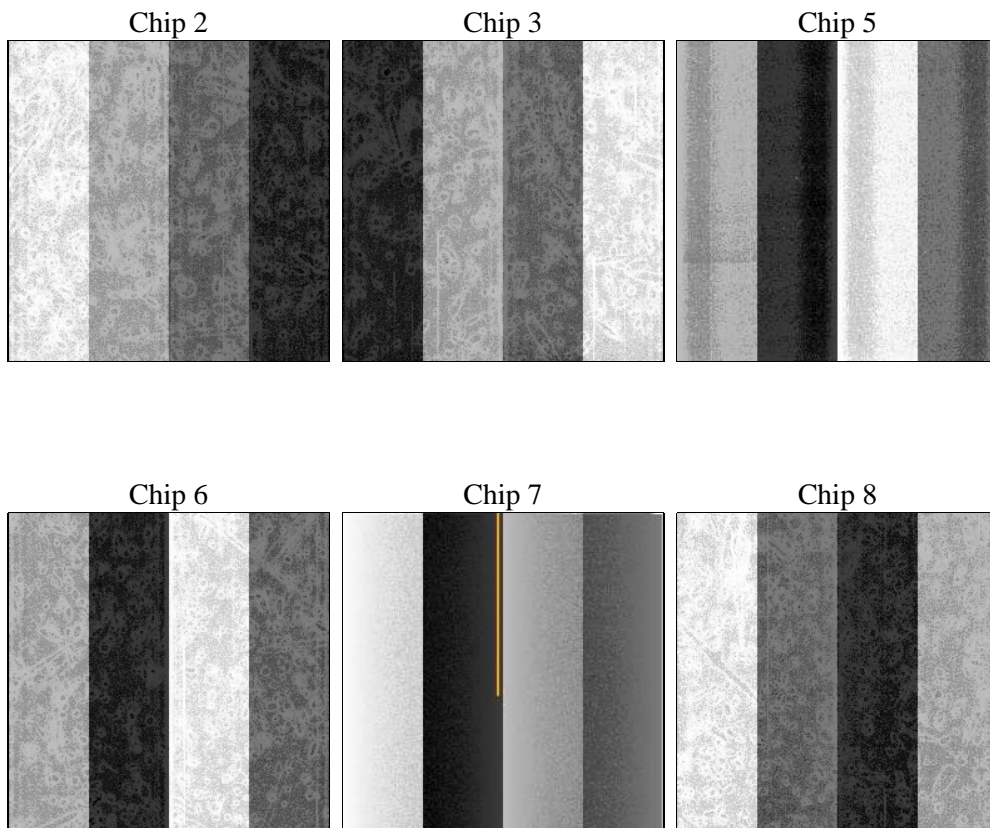
2 OBI

2.1 OBI

2.1.1 Images



2.1.2 Bias



2.1.3 Parameters

obi_num	0	Obi number	sched_exp_time	29600.000000	[s] Scheduled observation exposure time
ascdsver	8.4.5	Processing system revision	ontime	29551.561410993	Sum of GTIs [s]
caldsver	4.5.1.1	 	ontime2	29551.602450997	Sum of GTIs [s]
date	2012-09-06T12:37:07	Date and time of file creation	ontime3	29551.438290998	Sum of GTIs [s]
revision	3	Processing version of data	ontime5	29551.520370999	Sum of GTIs [s]
			ontime6	29551.479331002	Sum of GTIs [s]
			ontime7	29551.561410993	Sum of GTIs [s]
			ontime8	29551.397250995	Sum of GTIs [s]
			l1events	1282323	Number of level 1 events

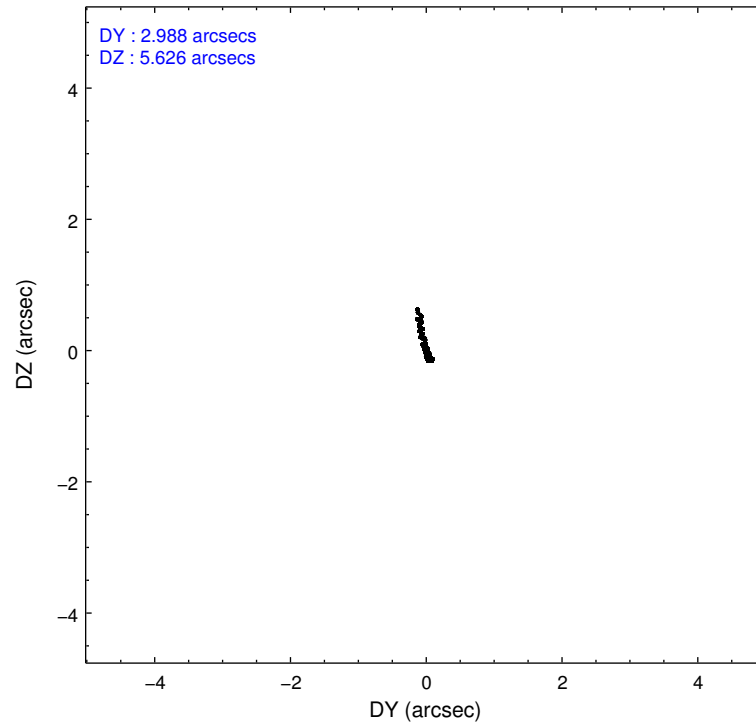
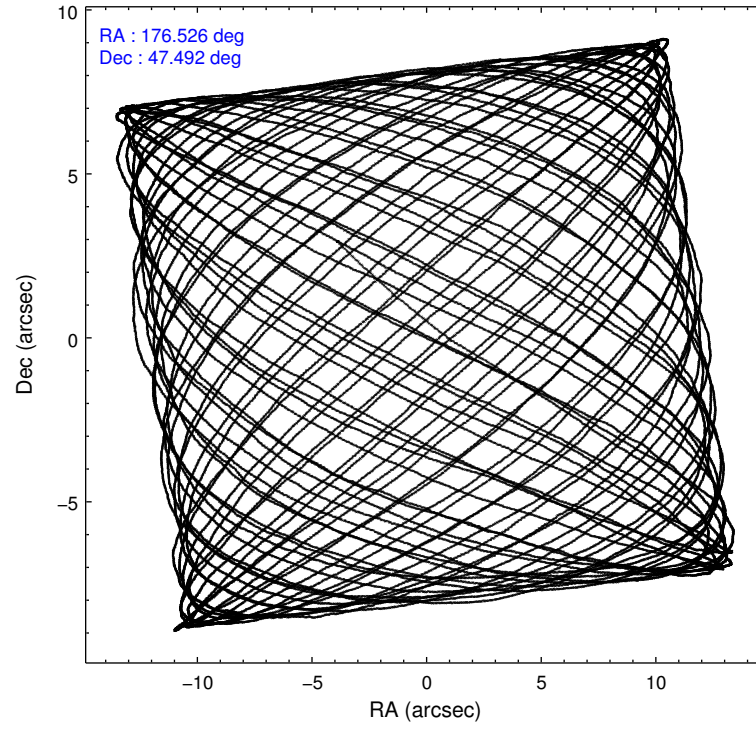
2.1.4 Events

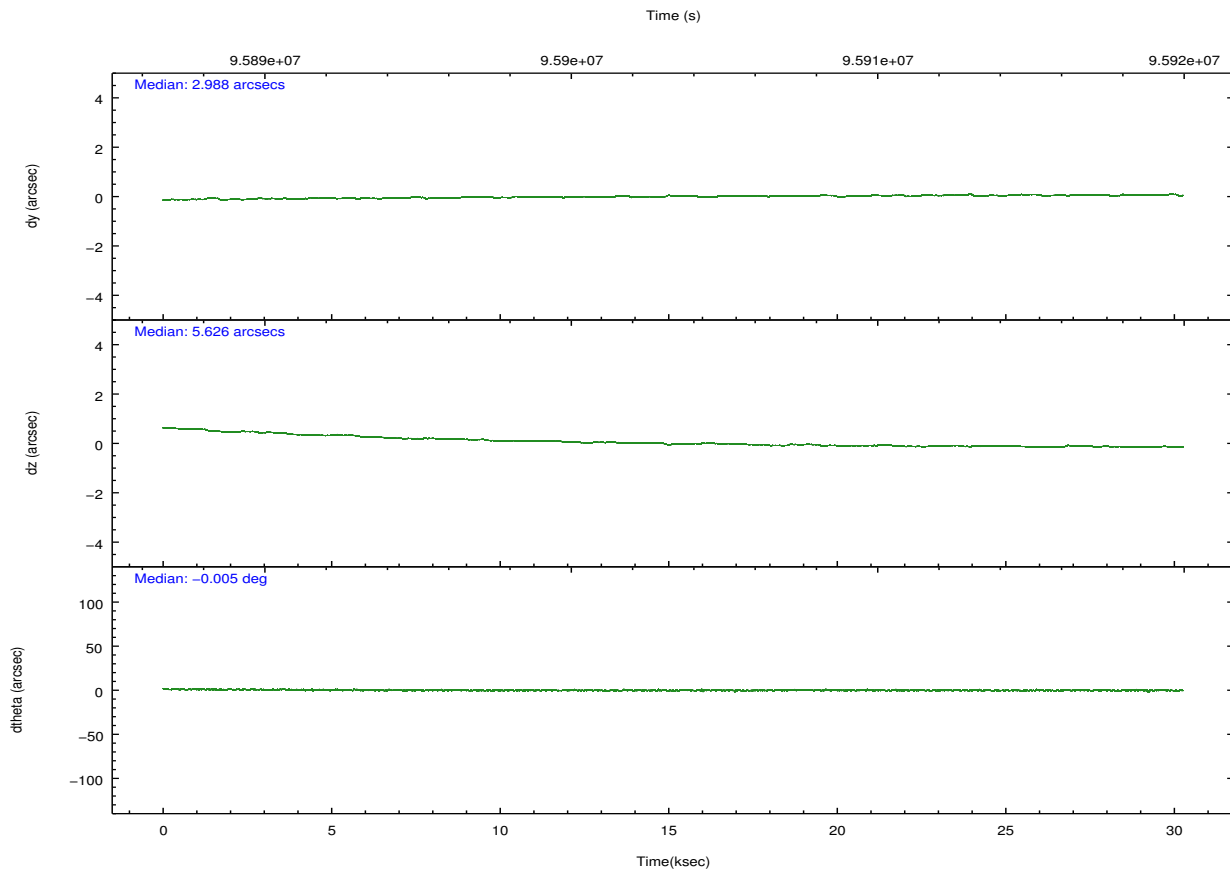
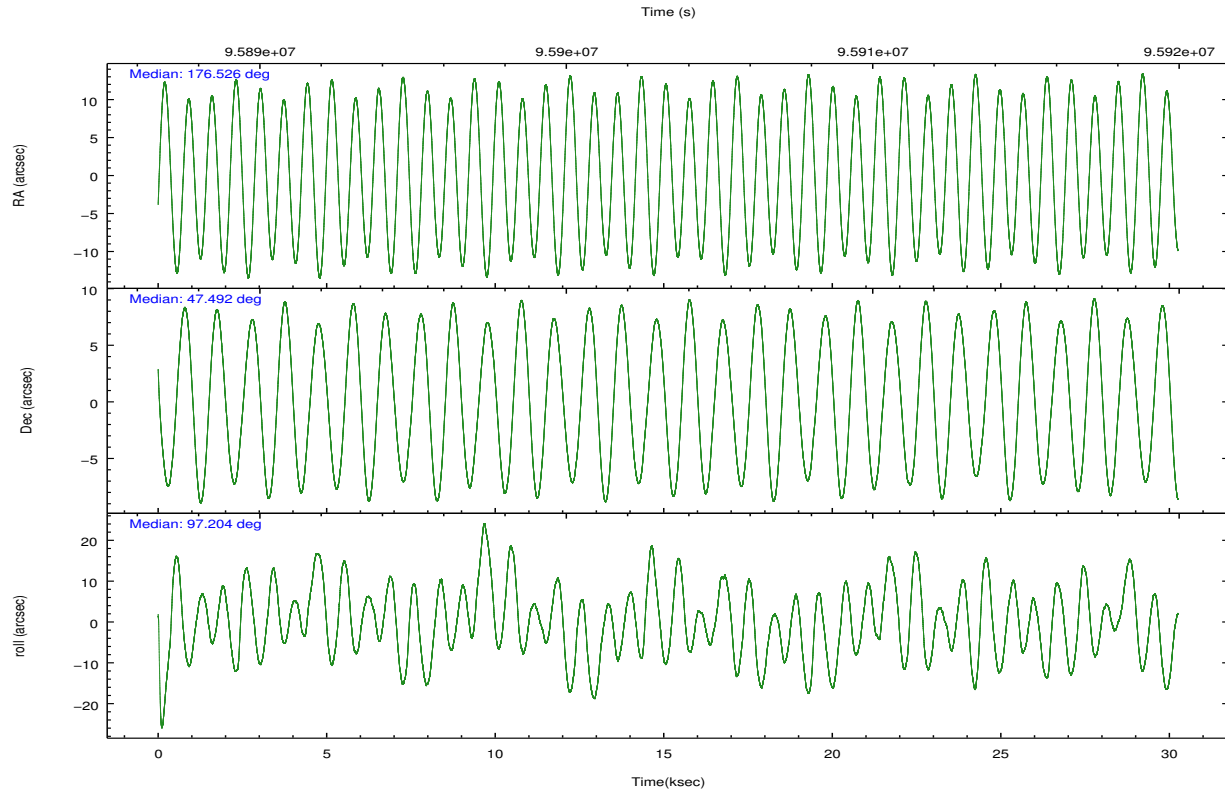
	ccd 2	ccd 3	ccd 5	ccd 6	ccd 7	ccd 8		ccd 2	ccd 3	ccd 5	ccd 6	ccd 7	ccd 8
level 1 events	184100	173990	266441	197410	234197	226185	grade 0 events	9272	9912	21866	22543	9979	16339
rejected events	162114	151673	135920	161245	133623	177816		5%	5%	8%	11%	4%	7%
rejected %	88%	87%	51%	81%	57%	78%	grade 1 events	90	94	970	143	227	138
								0%	0%	0%	0%	0%	0%
							grade 2 events	4945	4600	35679	4927	19734	10297
								2%	2%	13%	2%	8%	4%
							grade 3 events	1890	1934	5373	2180	8958	5056
								1%	1%	2%	1%	3%	2%
							grade 4 events	1926	2059	6792	2160	8935	4722
								1%	1%	2%	1%	3%	2%
							grade 5 events	6194	6632	19217	7569	22013	9417
								3%	3%	7%	3%	9%	4%
							grade 6 events	3955	3815	60859	4364	52992	11960
								2%	2%	22%	2%	22%	5%
							grade 7 events	155828	144944	115685	153524	111359	168256
								84%	83%	43%	77%	47%	74%

2.2 Compared Parameters

Parameter	Planned	Actual	Parameter	Planned	Actual
Instrument	ACIS	ACIS	Obspar format version number	7	7
Detector	ACIS-235678	ACIS-235678	Obspar file type	PREDICTED	ACTUAL
Grating	NONE	NONE	Obspar update status	NONE	UPDATED
Data mode	FAINT	FAINT	Number of optional ACIS chips dropped	0	0
Observation mode	POINTING	POINTING	On-chip summing requested	N	N
[deg] Pointing RA	176.550926	176.5262220774327	Subarray requested	NONE	NONE
[deg] Pointing Dec	47.470368	47.49197286340146	Alternating exposures requested	N	N
[deg] Pointing Roll	97.033753	97.20859793569011	[s] Primary exposure time	0.000000	3.2
[mm] SIM focus pos	-0.684267	-0.6828225247311905			
[mm] SIM defocus	0	0.001444936568705701			
[mm] SIM translation stage pos	-190.132523	-190.1425803651734			
[mm] SIM translation stage offset	0	0.01005778216563158			
[s] Observation start time (MET)	95888847.184000	95887655.034537			
Observation start date	2001-01-14T19:46:23	2001-01-14T19:27:35			
[s] Observation end time (MET)	95918447.184000	95919119.46074601			
Observation end date	2001-01-15T03:59:43	2001-01-15T04:11:59			
Read mode	TIMED	TIMED			

2.3 Aspect



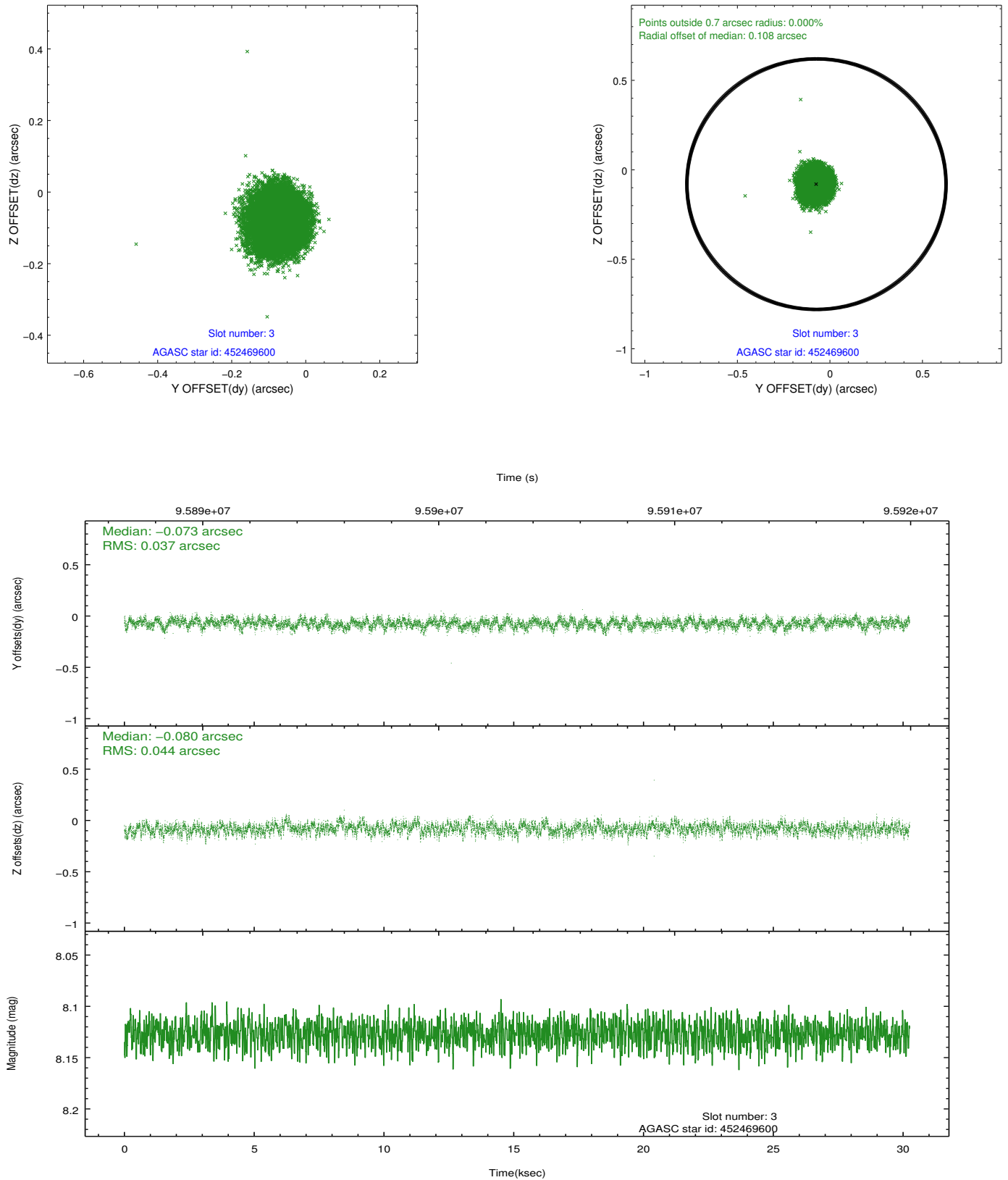


Slot Statistics

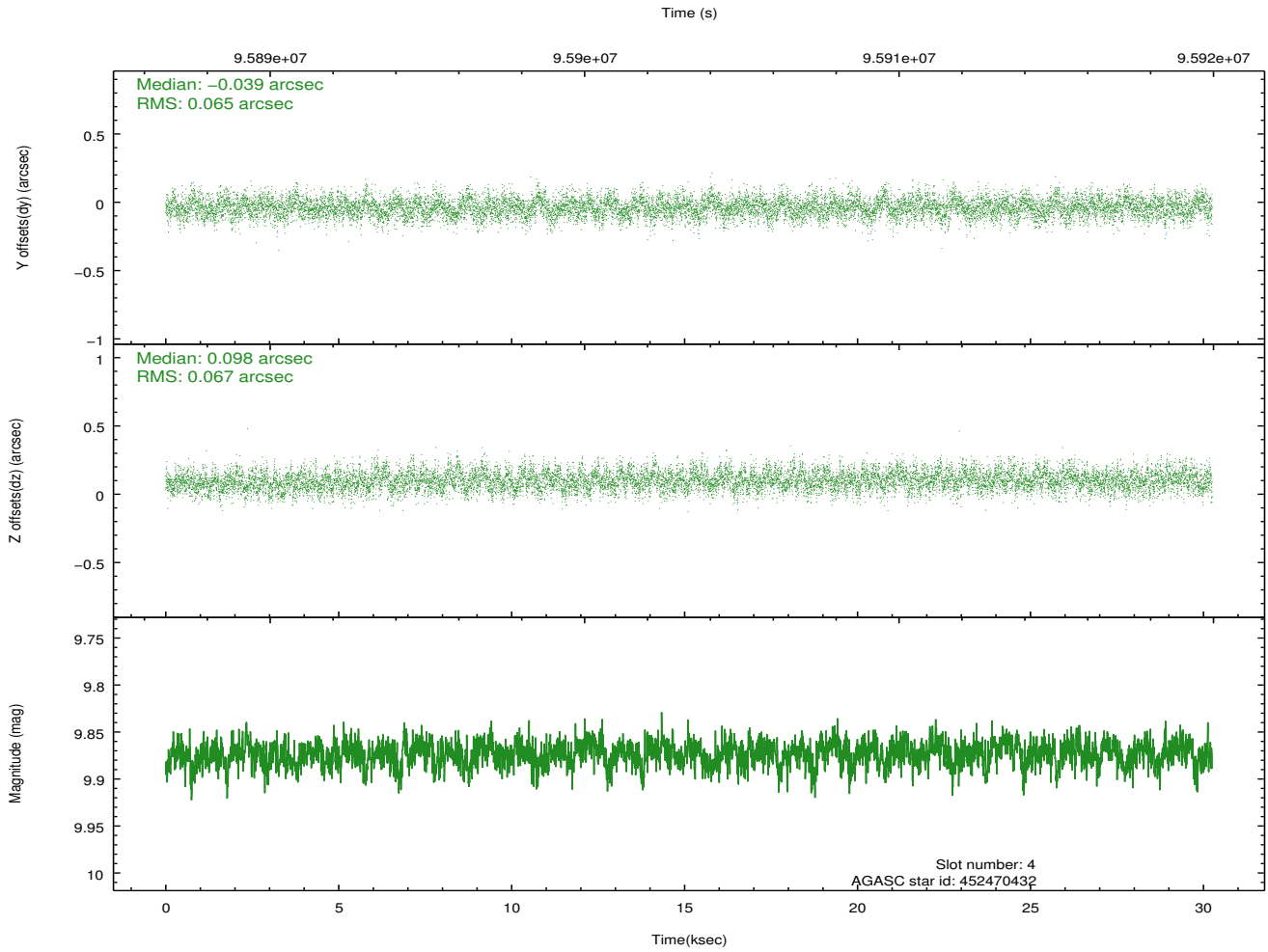
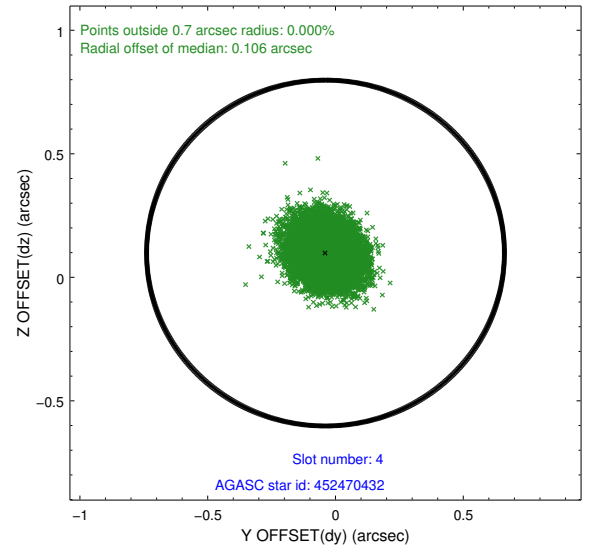
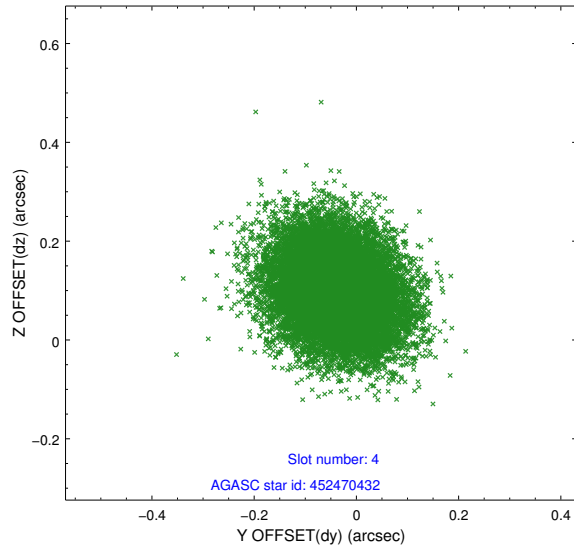
slot	status	id	mag	n_pts	med_dy	med_dz	dr1	dr2	ra	dec	mean_y	mean_z
0	FID	ACIS-S-2	7.11	7378	-0.027	0.011	0.008	0.014	0.000000	0.000000	-755.62	-1726.78
1	FID	ACIS-S-4	7.21	7376	-0.016	0.010	0.008	0.015	0.000000	0.000000	2157.60	181.68
2	FID	ACIS-S-5	7.24	7377	0.013	-0.013	0.007	0.012	0.000000	0.000000	-1808.36	175.34
3	GUIDE	452469600	8.13	14755	-0.073	-0.080	0.062	0.098	176.377116	47.666878	754.00	332.68
4	GUIDE	452470432	9.87	14749	-0.039	0.098	0.101	0.161	176.712094	47.890435	1453.76	-570.51
5	GUIDE	452466128	10.22	14707	0.120	0.223	0.110	0.178	177.327482	47.076111	-1631.98	-1716.40
6	GUIDE	452469288	9.96	14745	0.091	-0.066	0.137	0.220	176.480832	47.547282	295.81	135.68
7	GUIDE	452474496	9.79	14721	-0.115	-0.161	0.166	0.298	175.552399	47.604662	791.97	2344.72

2.4 Star Slots

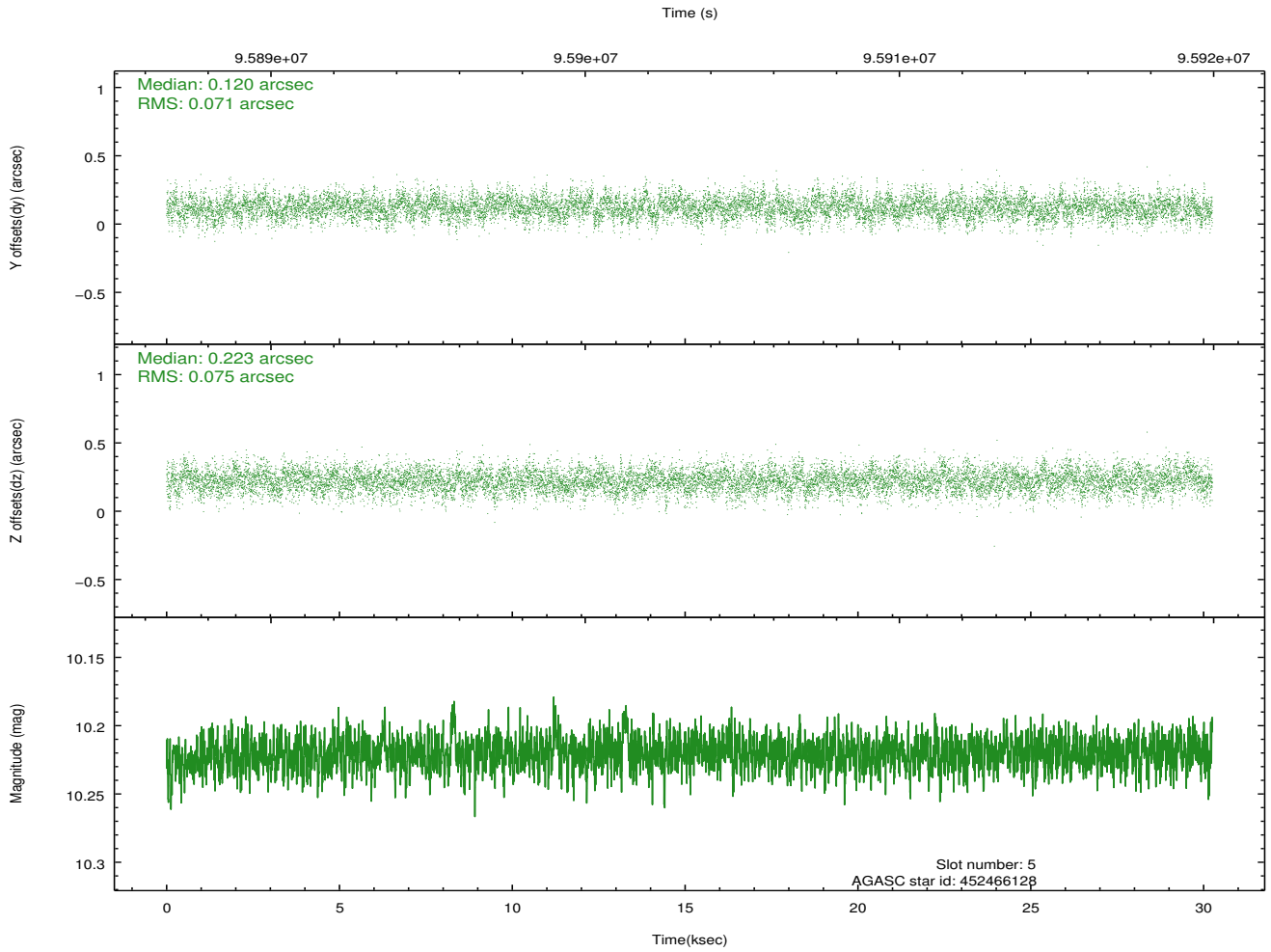
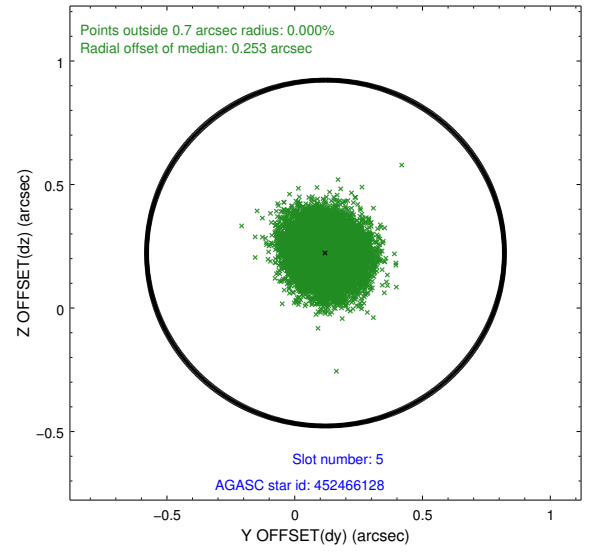
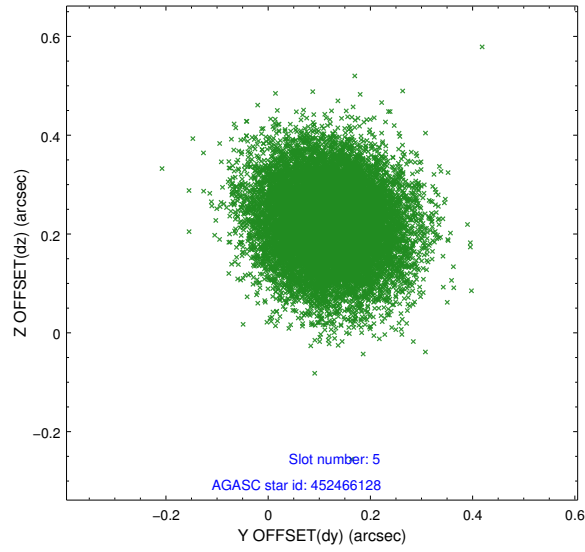
2.4.1 Slot 3



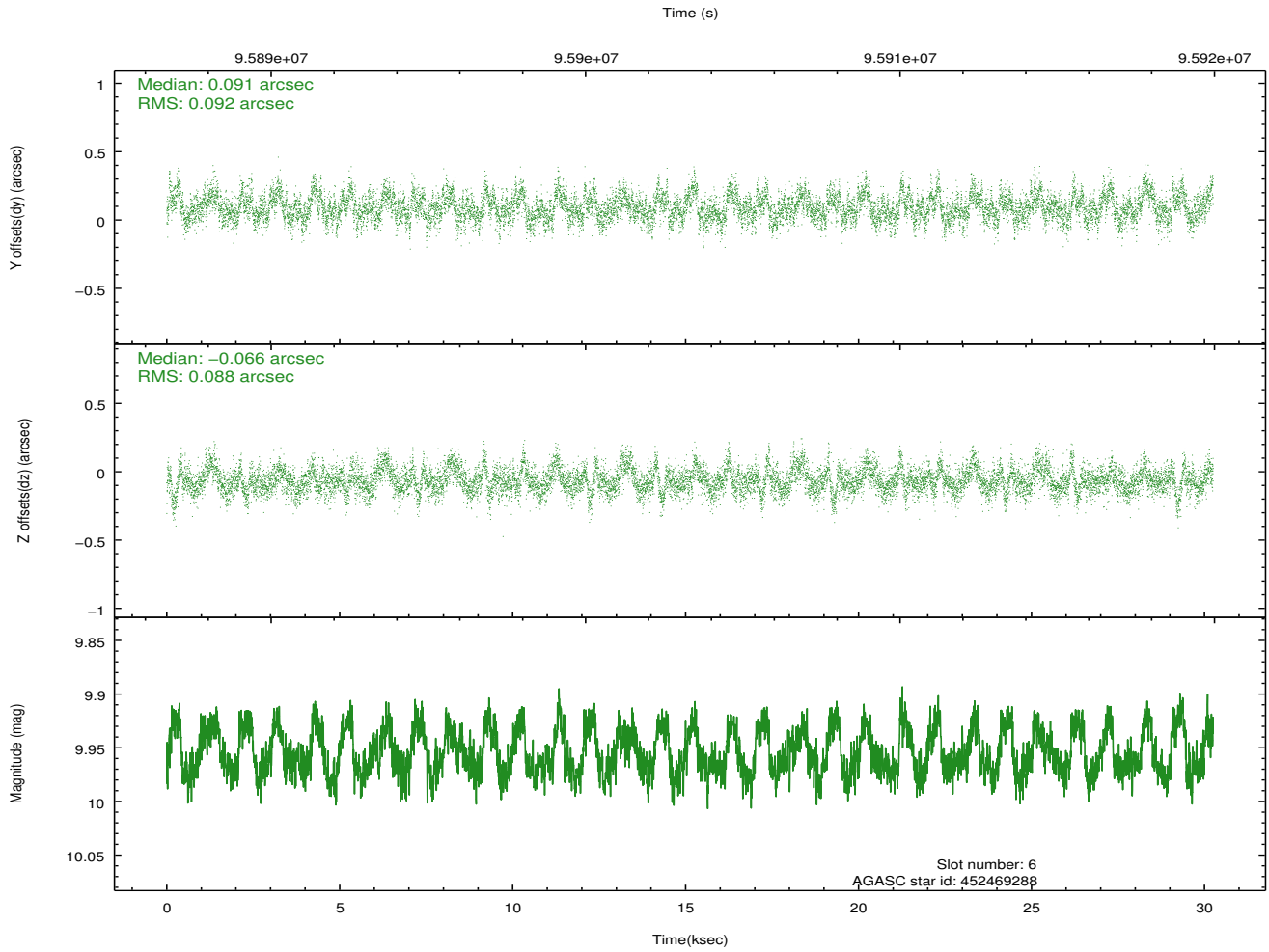
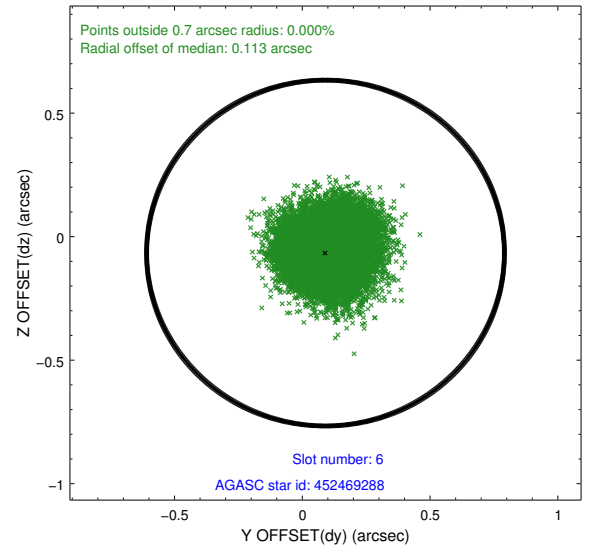
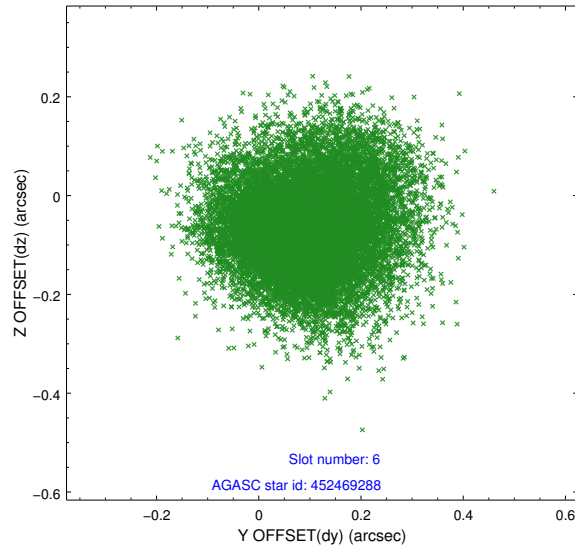
2.4.2 Slot 4



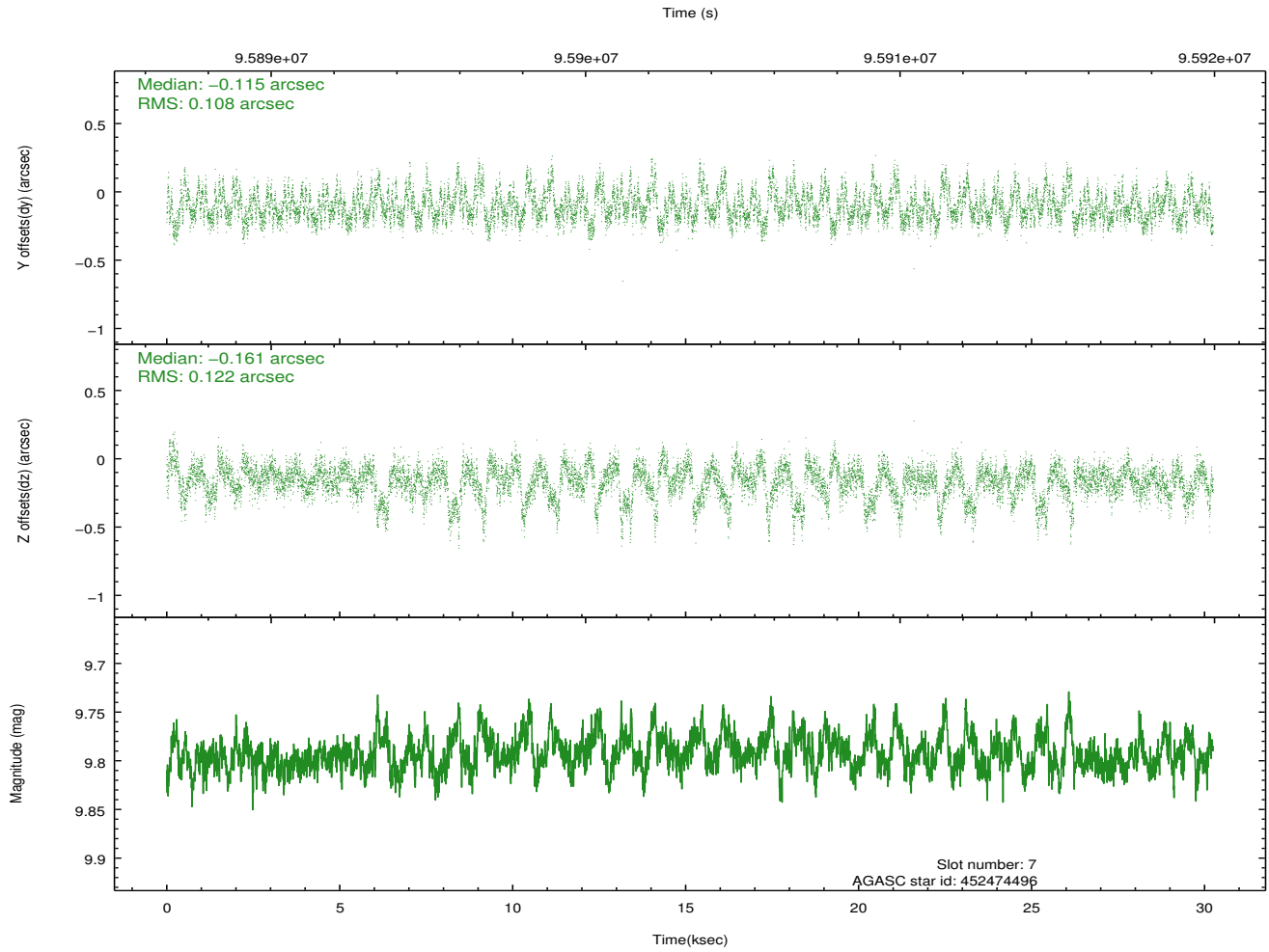
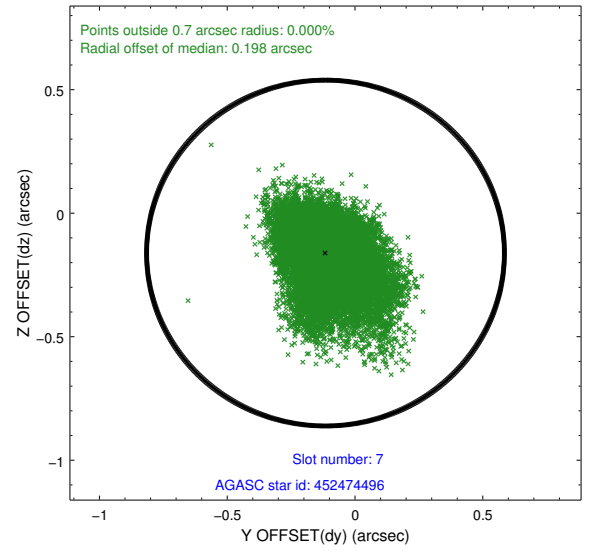
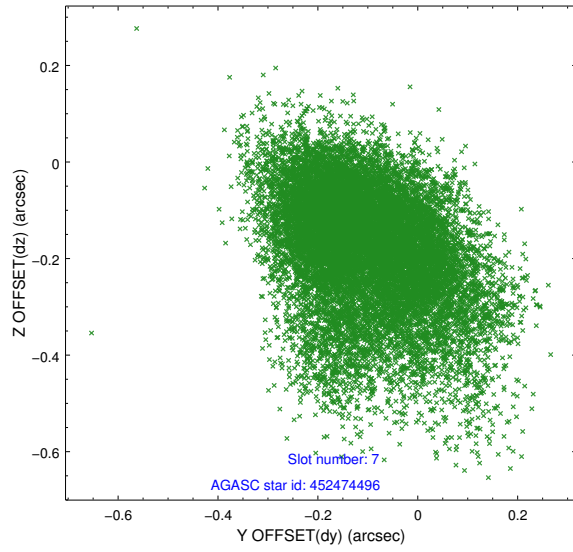
2.4.3 Slot 5



2.4.4 Slot 6

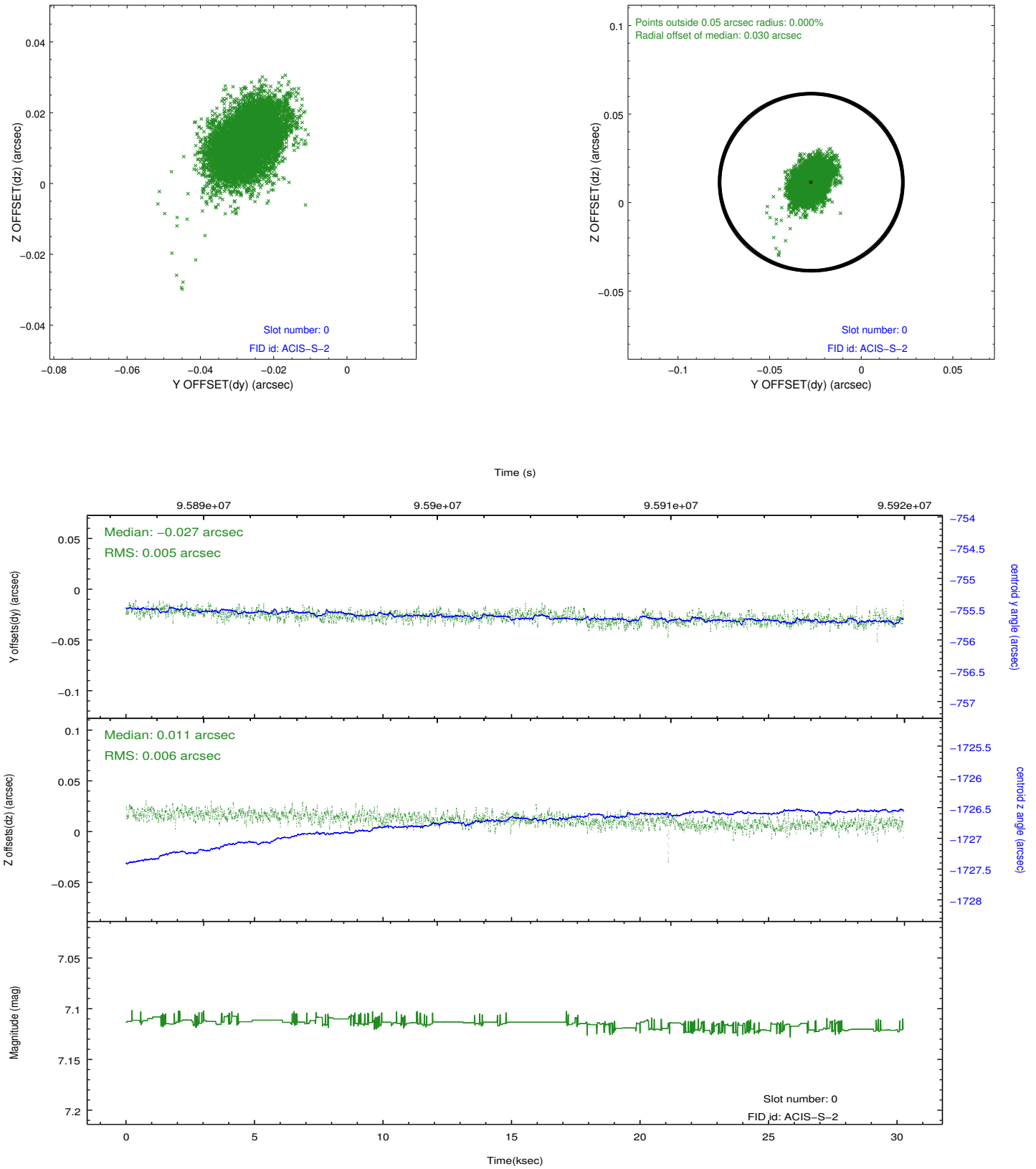


2.4.5 Slot 7

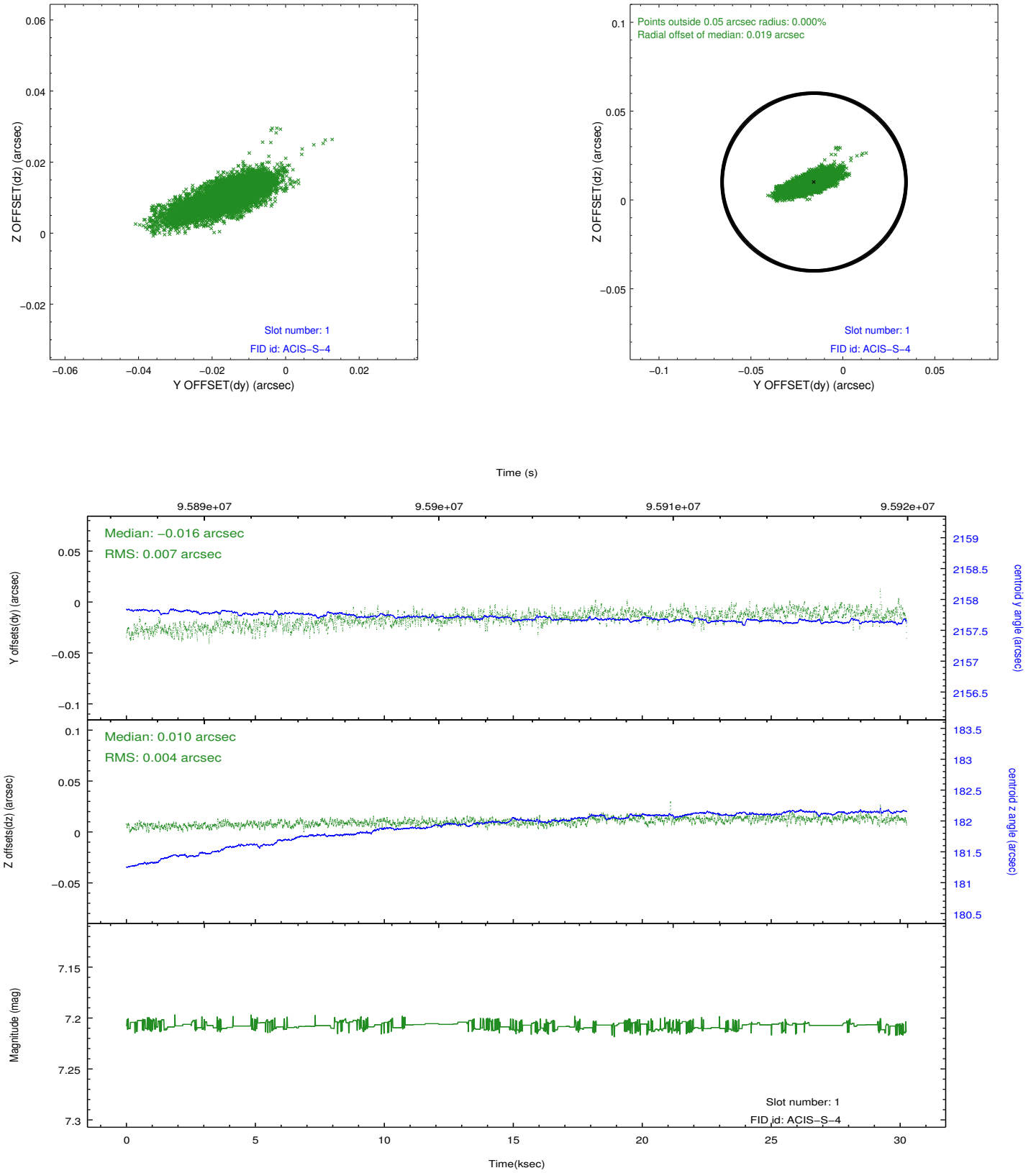


2.5 FID Slots

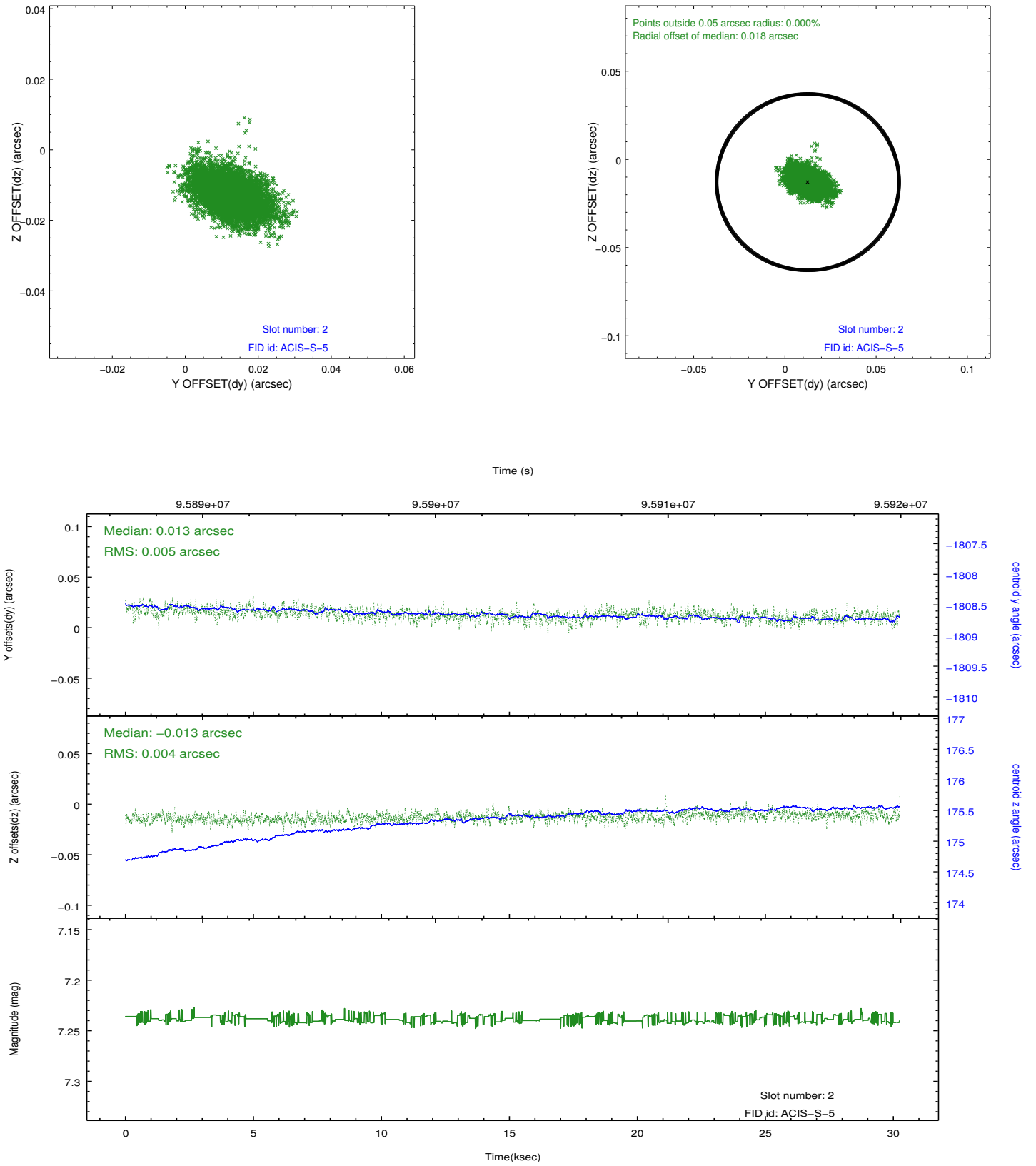
2.5.1 Slot 0



2.5.2 Slot 1



2.5.3 Slot 2



A Summary

A.1 Status

V&V Scientist	Jen Lauer
V&V Date (YYYY-MM-DD)	2012.09.17
V&V Edition	1
V&V Disposition and Status	OK
V&V Charge Time	29.552

A.2 Comments