

# V&V Reference Report

## L2 ASCDS Version : 8.4.5

Observation 1962 - L2 Version 4  
Chandra X-Ray Center

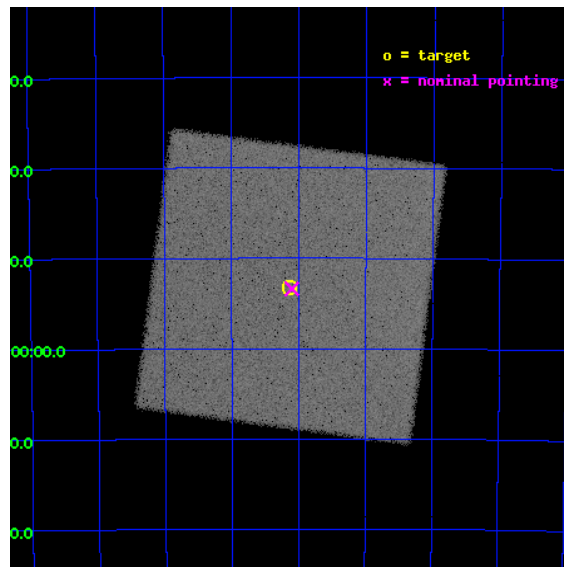
L2 Processing Date : Sep 20 2012

## Contents

<b>1</b>	<b>Front</b>	<b>2</b>
<b>2</b>	<b>OBI</b>	<b>3</b>
2.1	OBI . . . . .	3
2.1.1	Images . . . . .	3
2.1.2	Parameters . . . . .	4
2.1.3	Events . . . . .	4
2.2	Compared Parameters . . . . .	5
2.3	Aspect . . . . .	6
2.4	Star Slots . . . . .	9
2.4.1	Slot 3 . . . . .	9
2.4.2	Slot 4 . . . . .	10
2.4.3	Slot 5 . . . . .	11
2.4.4	Slot 6 . . . . .	12
2.4.5	Slot 7 . . . . .	13
2.5	FID Slots . . . . .	14
2.5.1	Slot 0 . . . . .	14
2.5.2	Slot 1 . . . . .	15
2.5.3	Slot 2 . . . . .	16
<b>A</b>	<b>Summary</b>	<b>17</b>
A.1	Status . . . . .	17
A.2	Comments . . . . .	17

# 1 Front

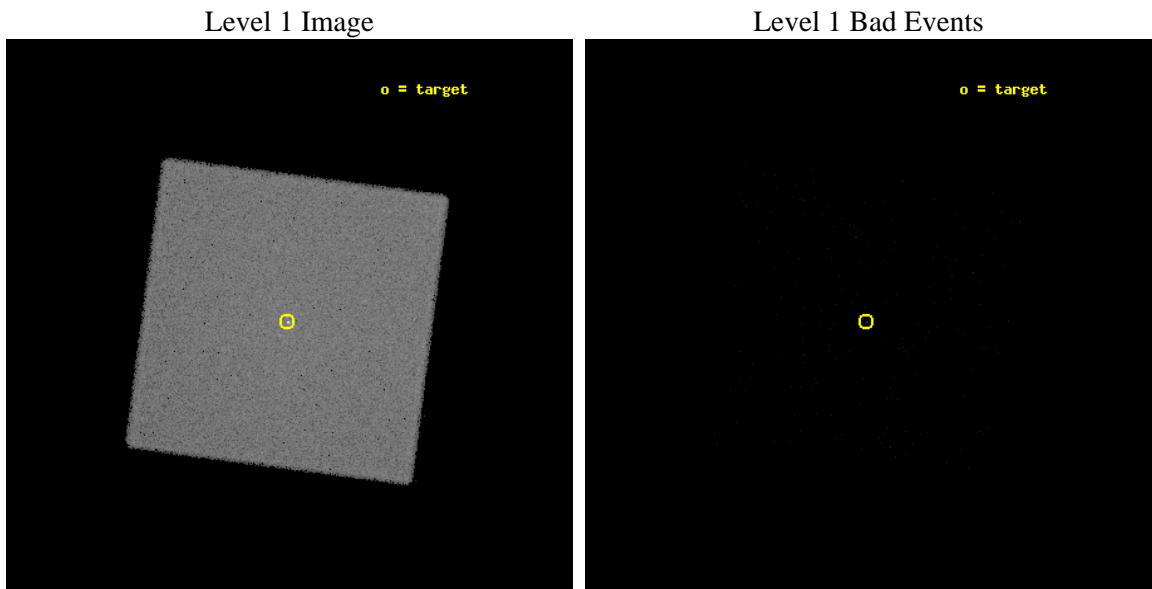
seq_num	500139	Sequence number
obs_id	1962	Observation id
title	CHANDRA DETAILED SPATIAL STUDY OF THE ``ANOMALOUS" X--RAY PULSARS	&#160
observer	Dr. Gianluca Israel	Principal investigator
object	1E1048-59	Source name
ra_targ	162.5325	Observer's specified target RA [deg]
dec_targ	-59.8875	Observer's specified target Dec [deg]
ra_nom	162.52515081362	Nominal RA [deg]
dec_nom	-59.889718845548	Nominal Dec [deg]
roll_nom	232.4952370916	Nominal Roll [deg]
revision	4	Processing version of data
ontime	9870.7503857762	[s]
livetime	9820.7278080978	Ontime multiplied by DTCOR
l2events	254509	Number of level 2 events



## 2 OBI

### 2.1 OBI

#### 2.1.1 Images



### 2.1.2 Parameters

obi_num	0	Obi number	sched_exp_time	10000.000000	[s] Scheduled observation exposure time
ascdsver	8.4.5	Processing system revision	ontime	9870.7503857762	[s]
caldbver	4.5.1.1	&#160	l1events	383968	Number of level 1 events
date	2012-09-20T12:40:30	Date and time of file creation			
revision	4	Processing version of data			

### 2.1.3 Events

#### Level 1 Events

	<b>segment 0</b>
level 1 events	383968
rejected events	4644
rejected %	1%

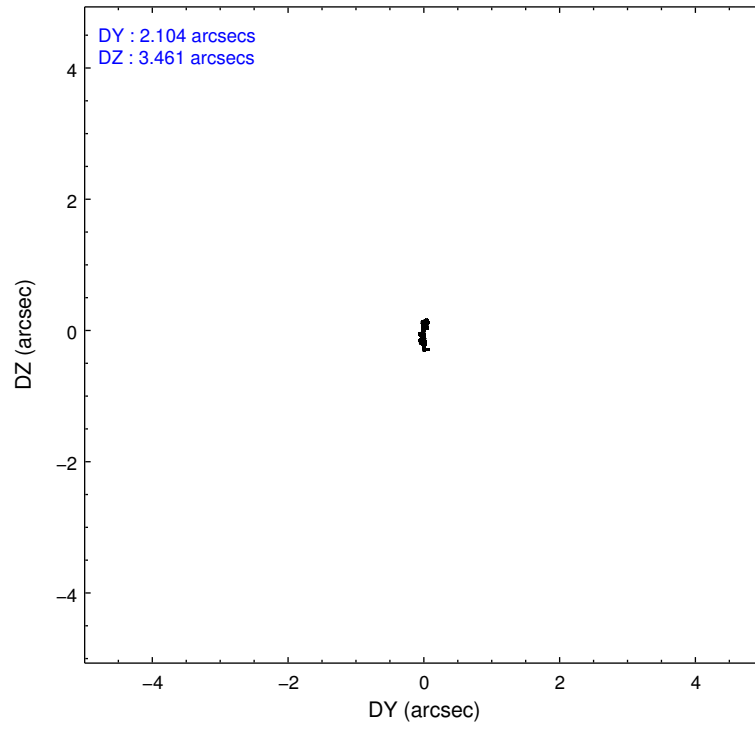
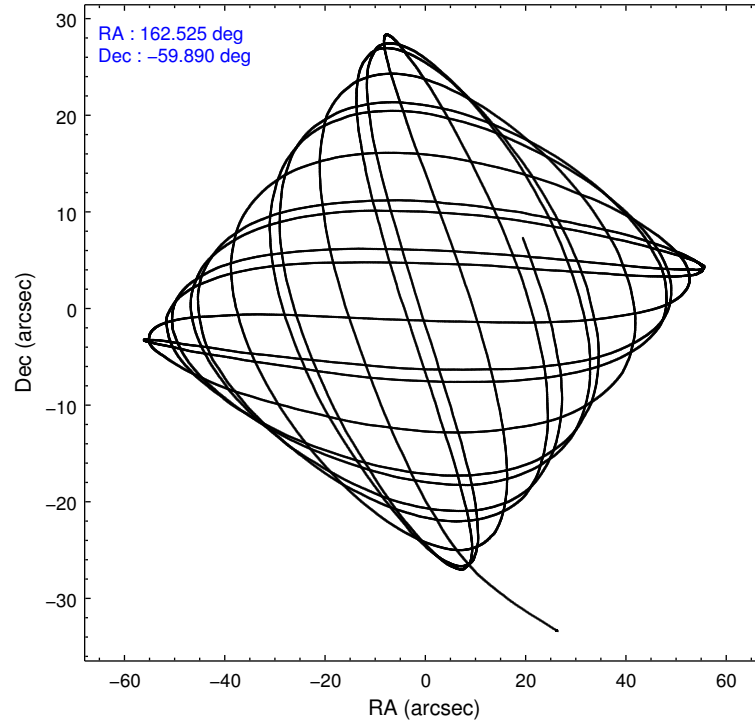


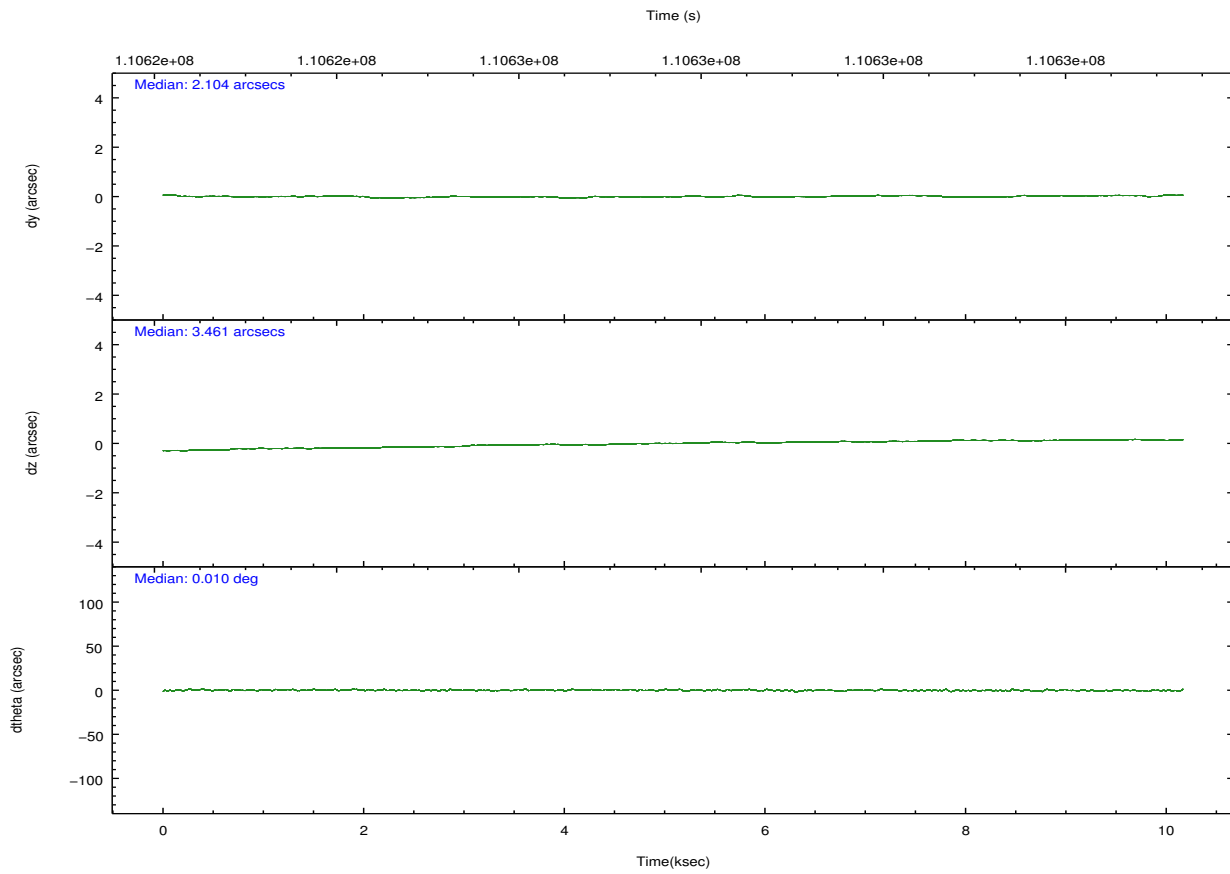
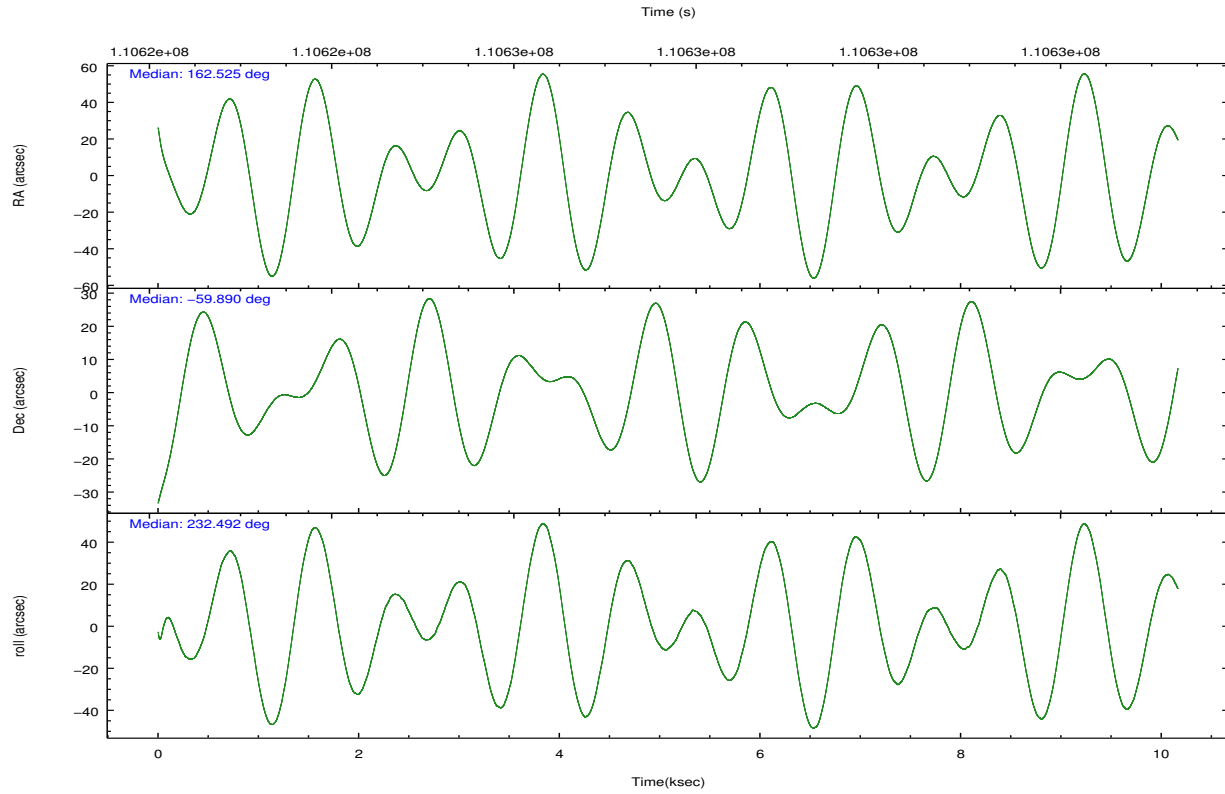
## 2.2 Compared Parameters

Parameter	Planned	Actual
Instrument	HRC	HRC
Detector	HRC-I	HRC-I
Grating	NONE	NONE
Data mode	OBSERVING	OBSERVING
Observation mode	POINTING	POINTING
[deg] Pointing RA	162.531097	162.5251508136162
[deg] Pointing Dec	-59.862628	-59.88971884554793
[deg] Pointing Roll	232.595908	232.4952370915969
[mm] SIM focus pos	-1.040293	-1.038866356238299
[mm] SIM defocus	0	0.001426264420575141
[mm] SIM translation stage pos	126.985494	126.9854943052878
[mm] SIM translation stage offset	0	-5.413686238853188e-06
[s] Observation start time (MET)	110622775.184000	110621644.69295
Observation start date	2001-07-04T08:31:51	2001-07-04T08:14:04
[s] Observation end time (MET)	110632775.184000	110633613.61842
Observation end date	2001-07-04T11:18:31	2001-07-04T11:33:33

Parameter	Planned	Actual
Obspar format version number	7	7
Obspar file type	PREDICTED	ACTUAL
Obspar update status	NONE	UPDATED

## 2.3 Aspect



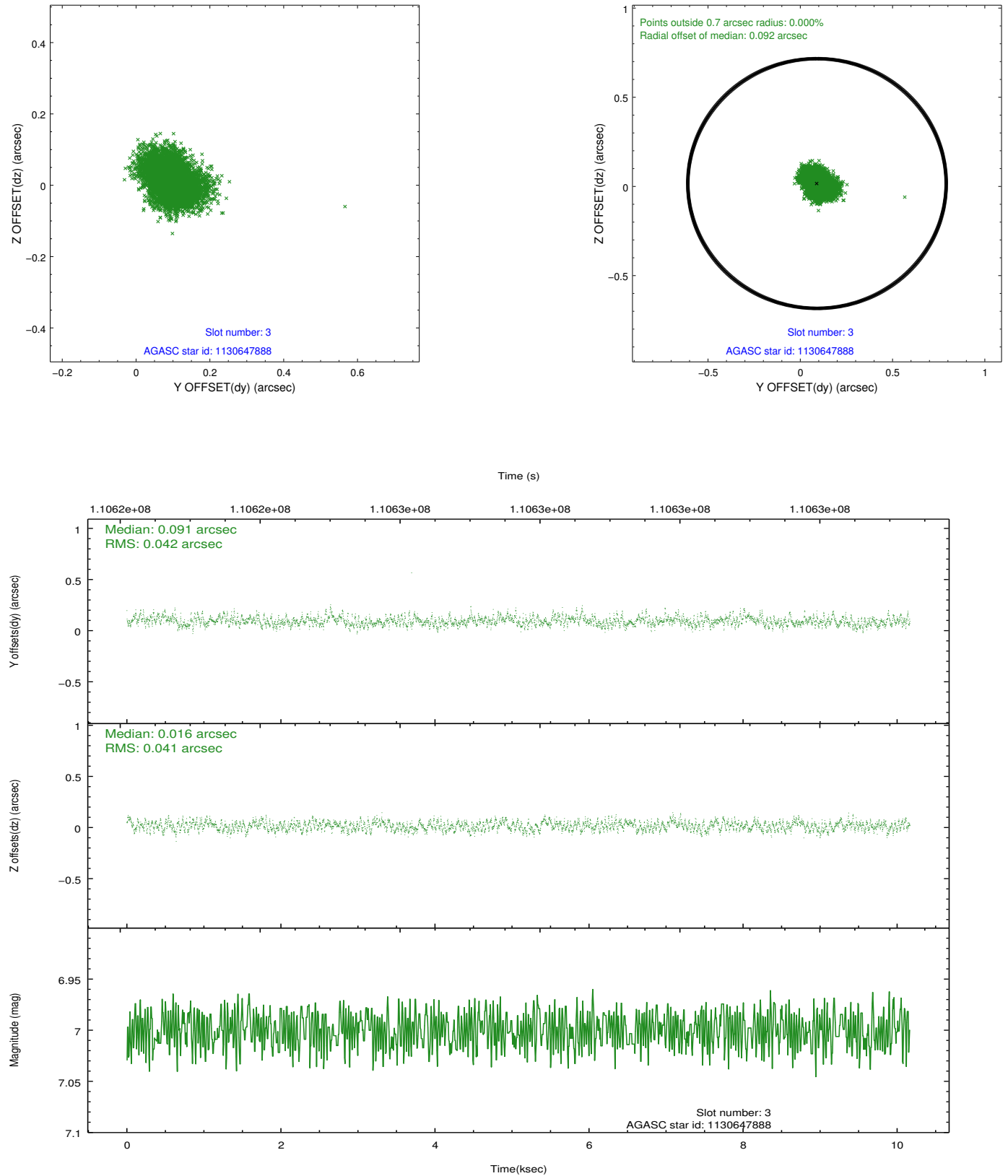


Slot Statistics

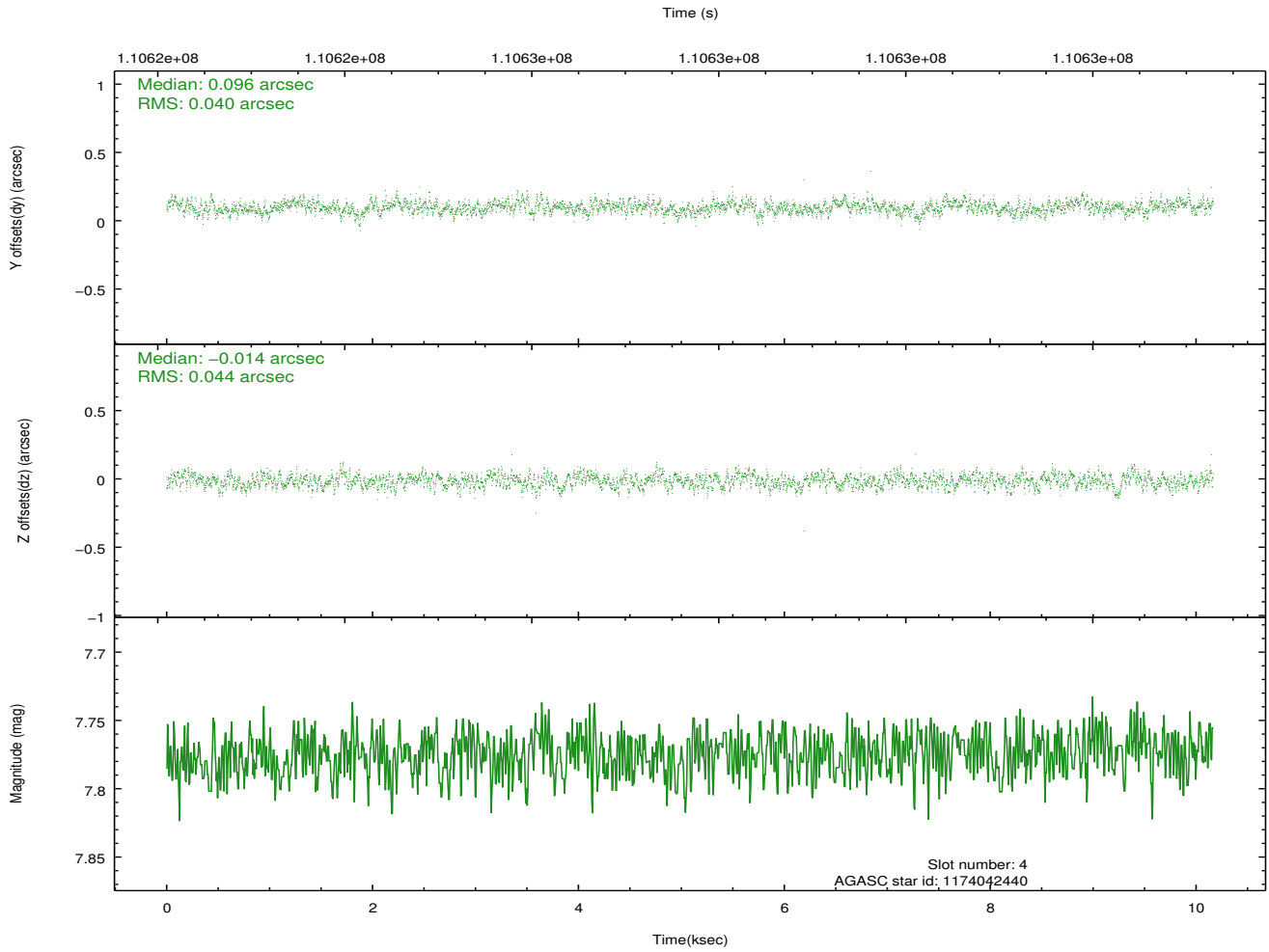
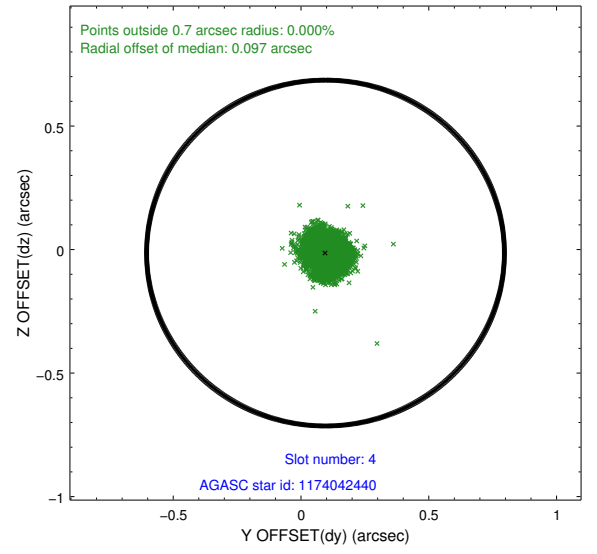
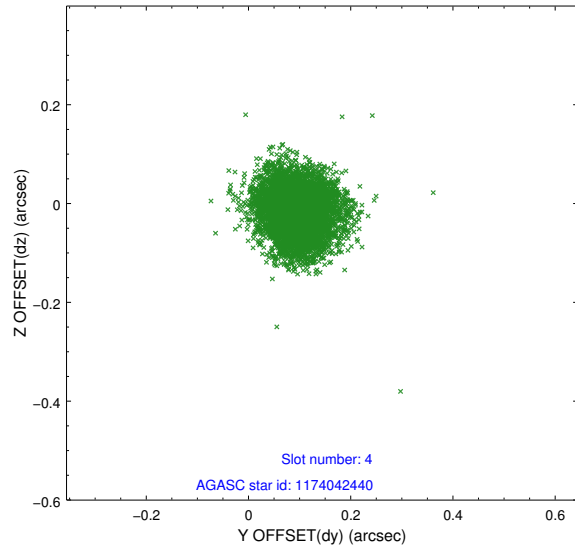
slot	status	id	mag	n_pts	med_dy	med_dz	dr1	dr2	ra	dec	mean_y	mean_z
0	FID	HRC-I-1	6.98	2480	0.068	0.048	0.009	0.015	0.000000	0.000000	-757.53	-1291.16
1	FID	HRC-I-3	7.07	2480	0.012	-0.065	0.012	0.021	0.000000	0.000000	-1186.31	1012.79
2	FID	HRC-I-4	7.03	2480	0.034	-0.073	0.007	0.012	0.000000	0.000000	1284.82	1011.24
3	GUIDE	1130647888	7.00	4960	0.091	0.016	0.063	0.099	161.934651	-59.875257	694.01	-824.56
4	GUIDE	1174042440	7.77	4960	0.096	-0.014	0.063	0.101	162.157370	-60.223757	1439.64	260.84
5	GUIDE	1130642000	7.93	4960	-0.080	-0.096	0.065	0.101	162.836255	-59.743891	-675.25	181.64
6	GUIDE	1174020728	8.15	4959	-0.017	0.070	0.060	0.101	162.364714	-60.294672	1415.27	710.26
7	GUIDE	1130632560	8.50	4959	-0.091	0.033	0.078	0.127	162.097550	-59.214101	-1367.73	-2050.29

## 2.4 Star Slots

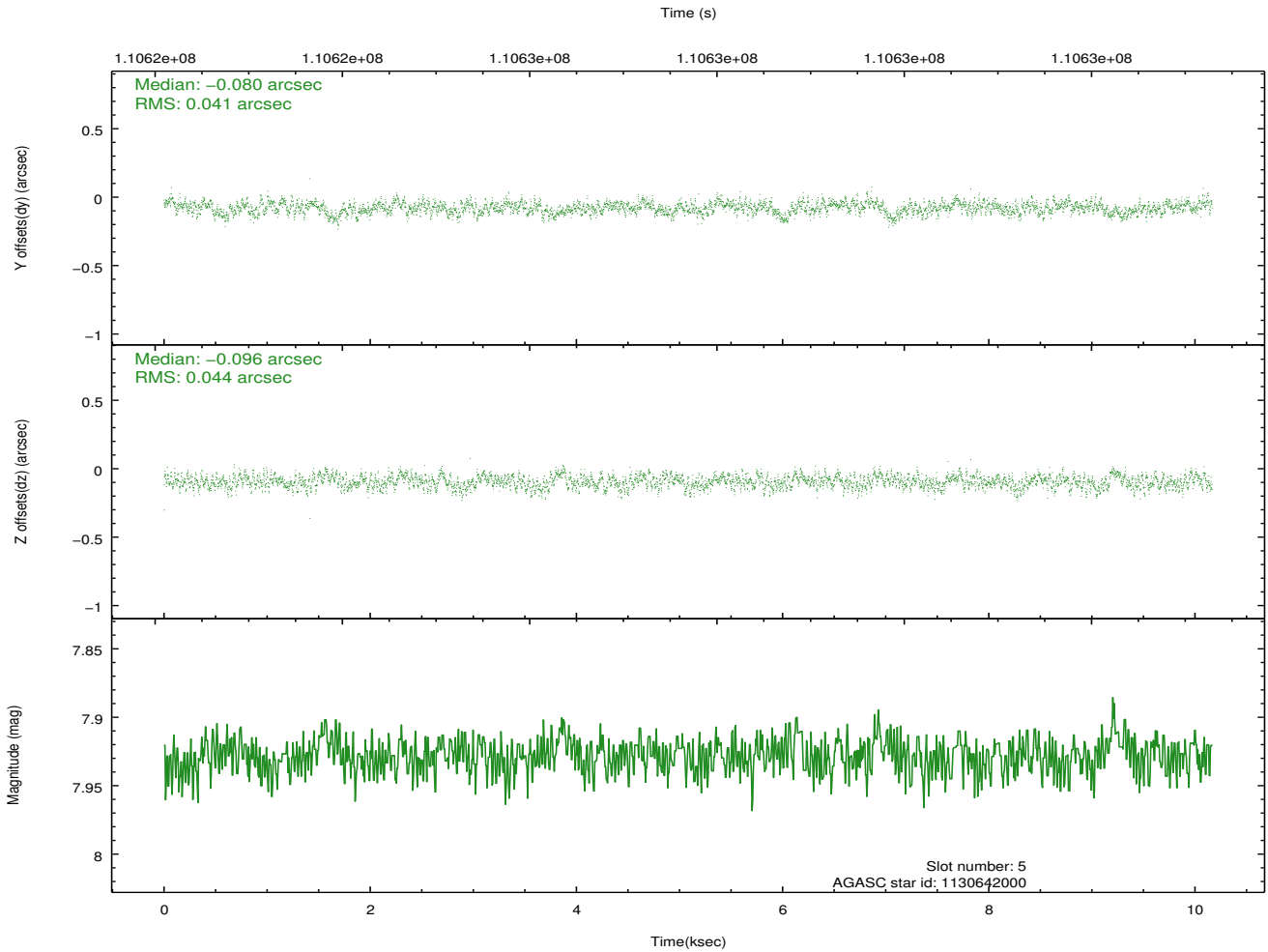
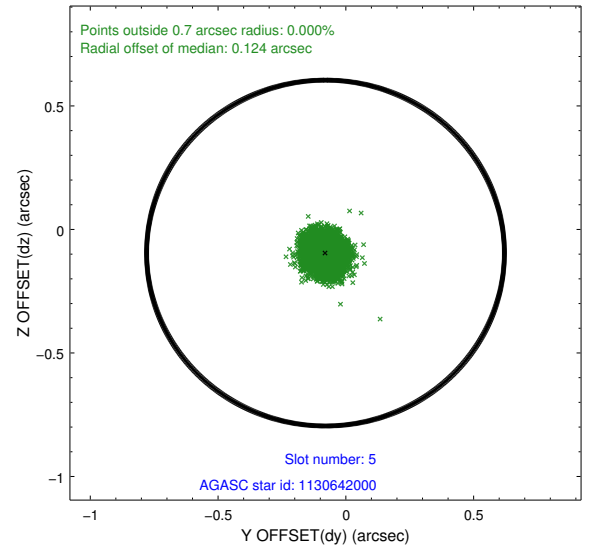
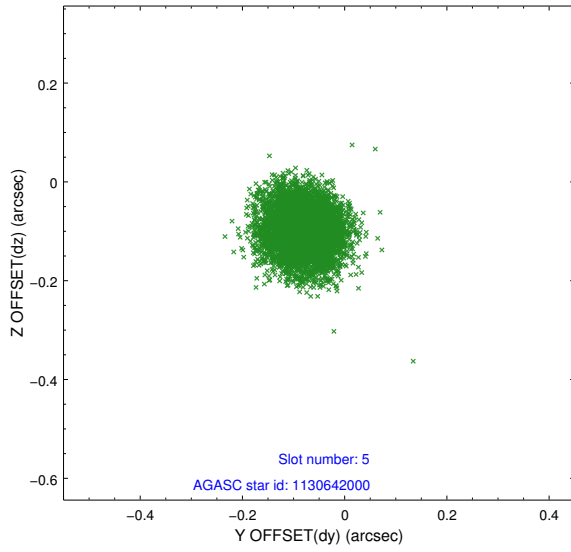
### 2.4.1 Slot 3



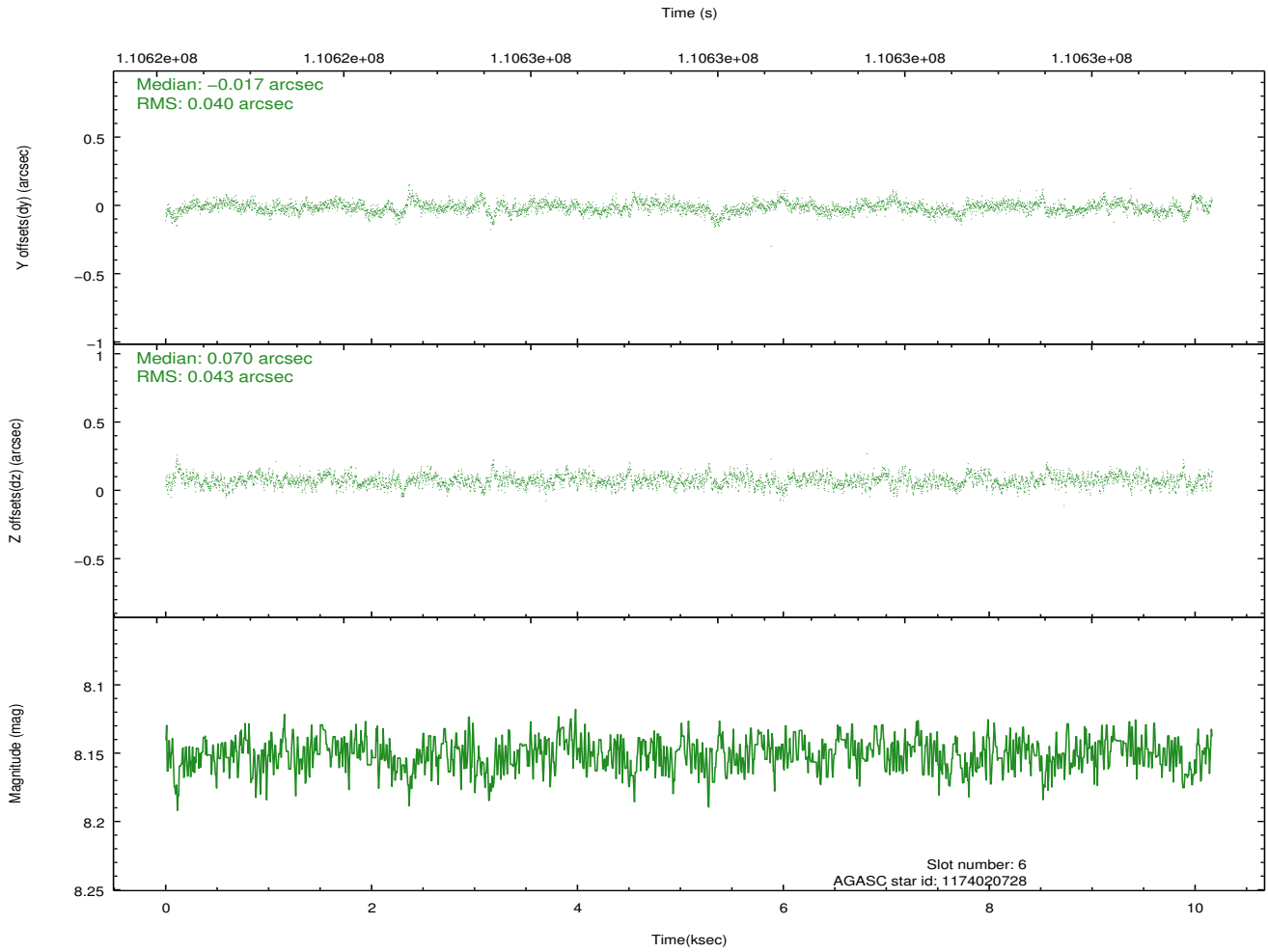
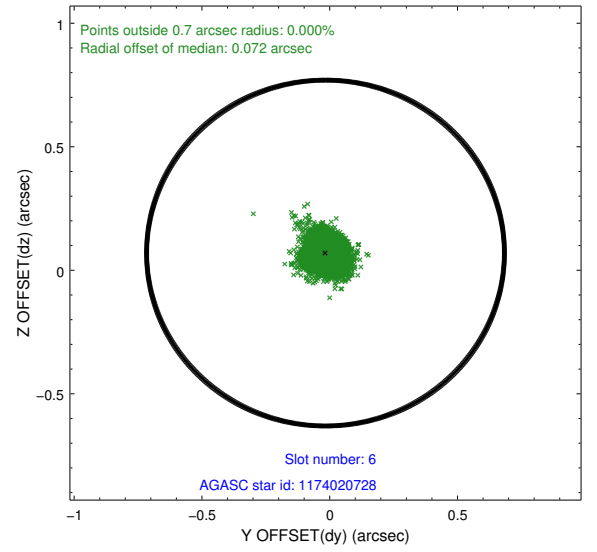
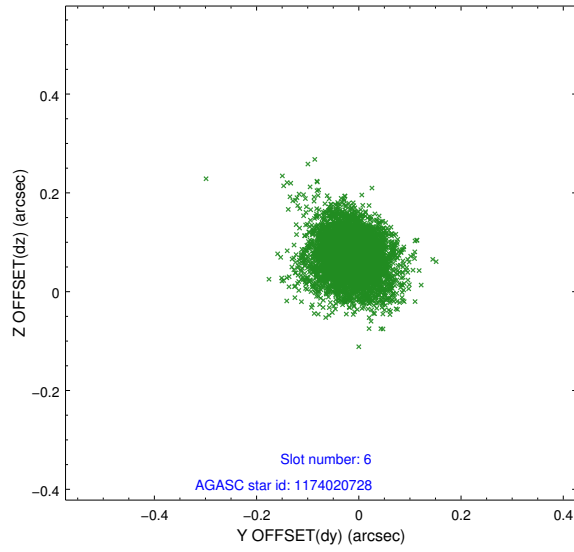
## 2.4.2 Slot 4



### 2.4.3 Slot 5

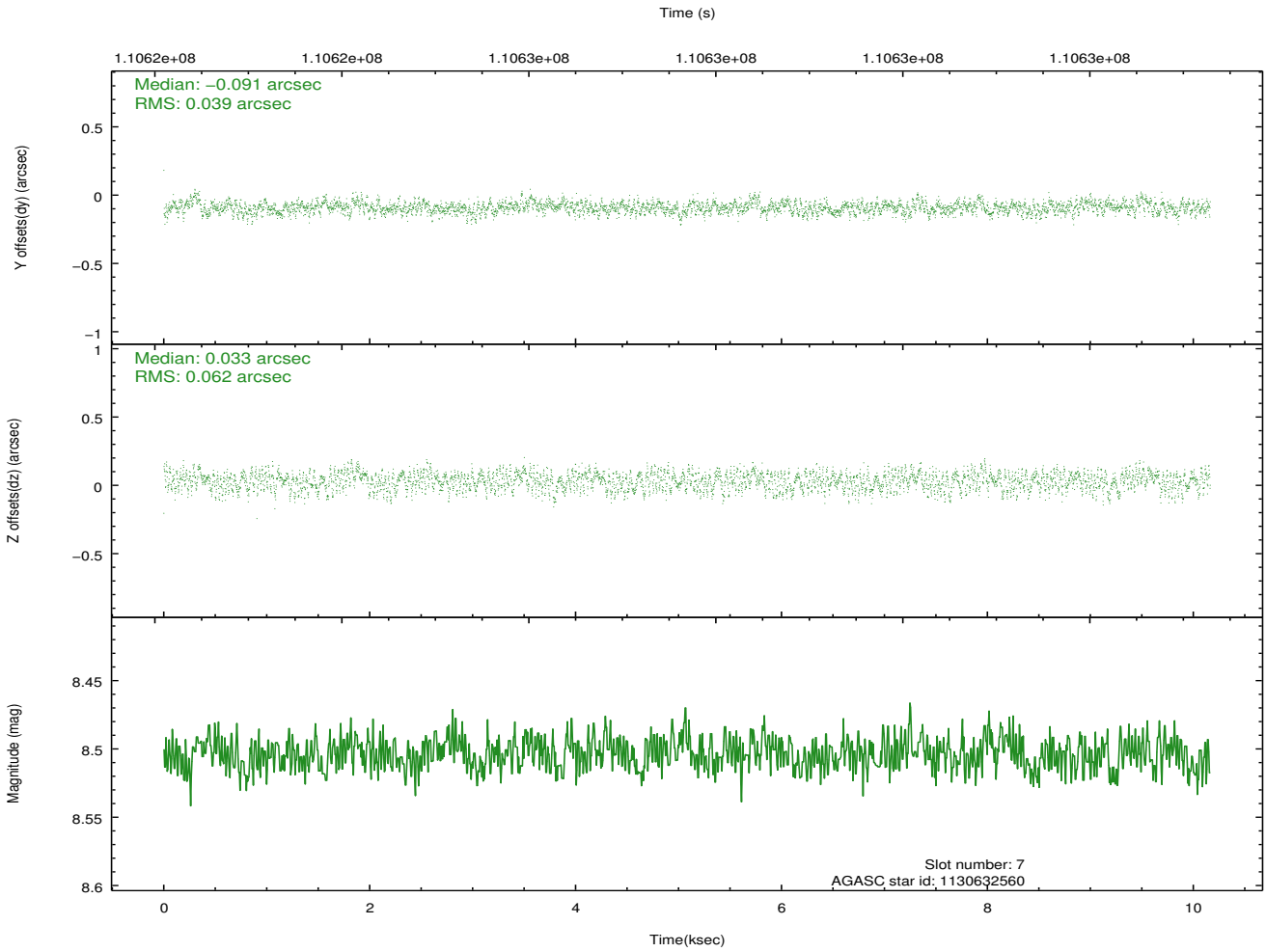
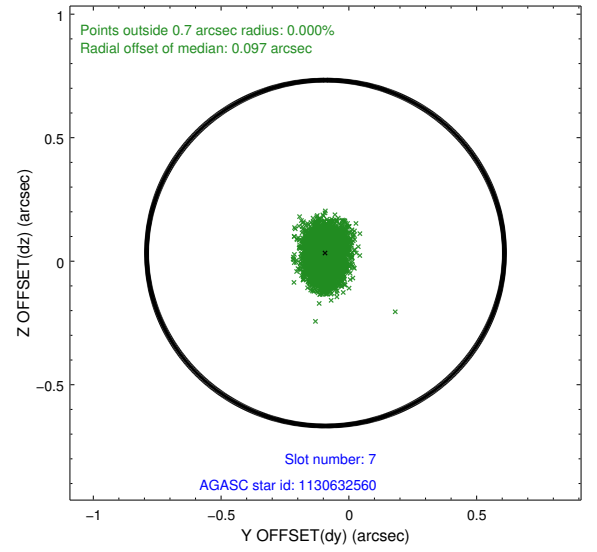
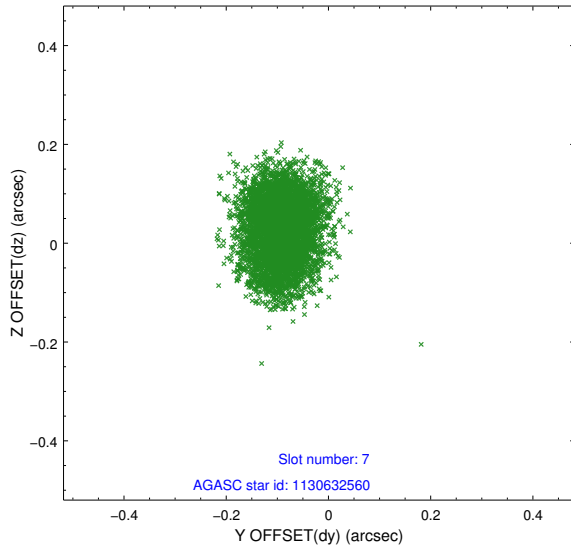


## 2.4.4 Slot 6



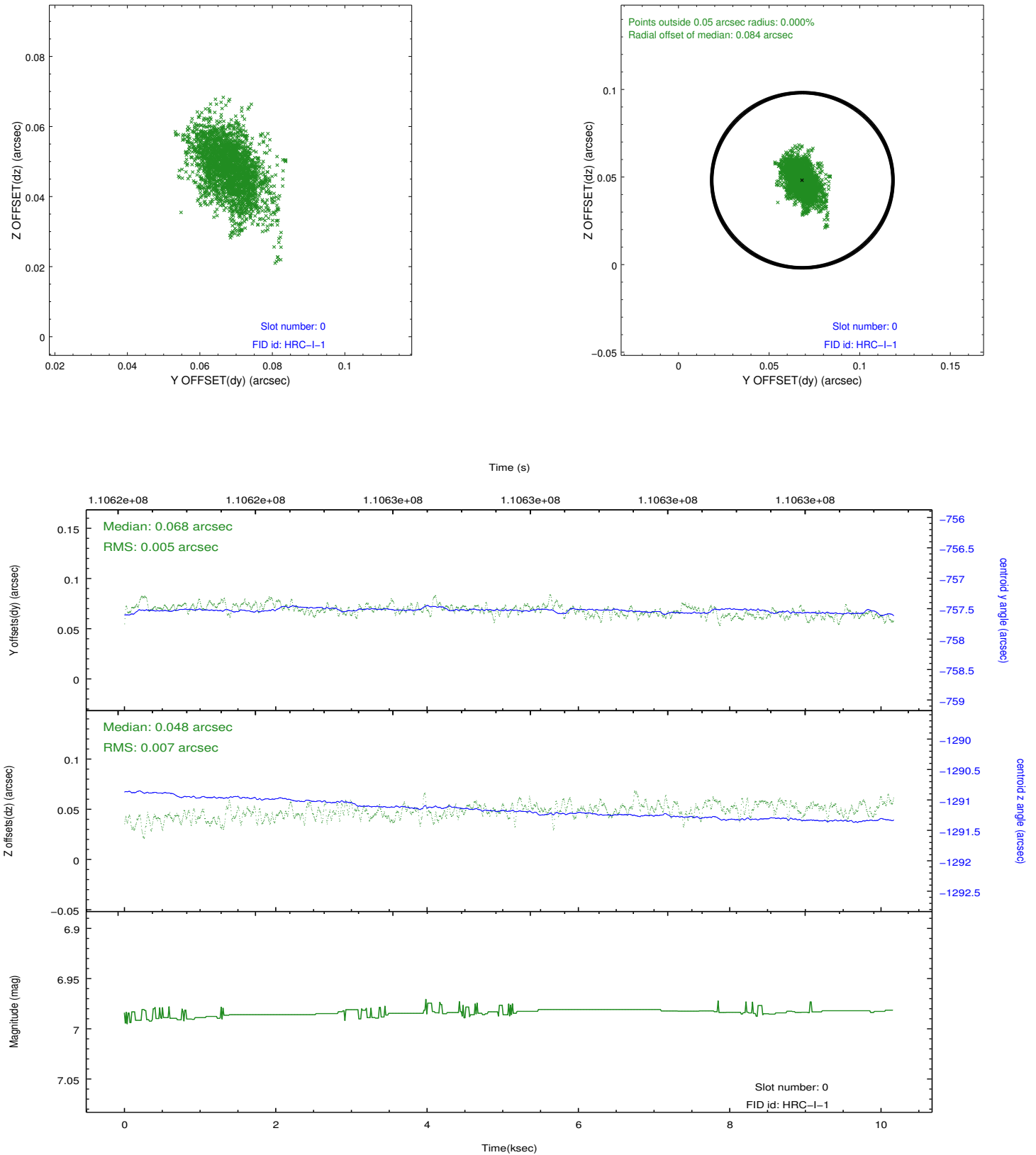


### 2.4.5 Slot 7

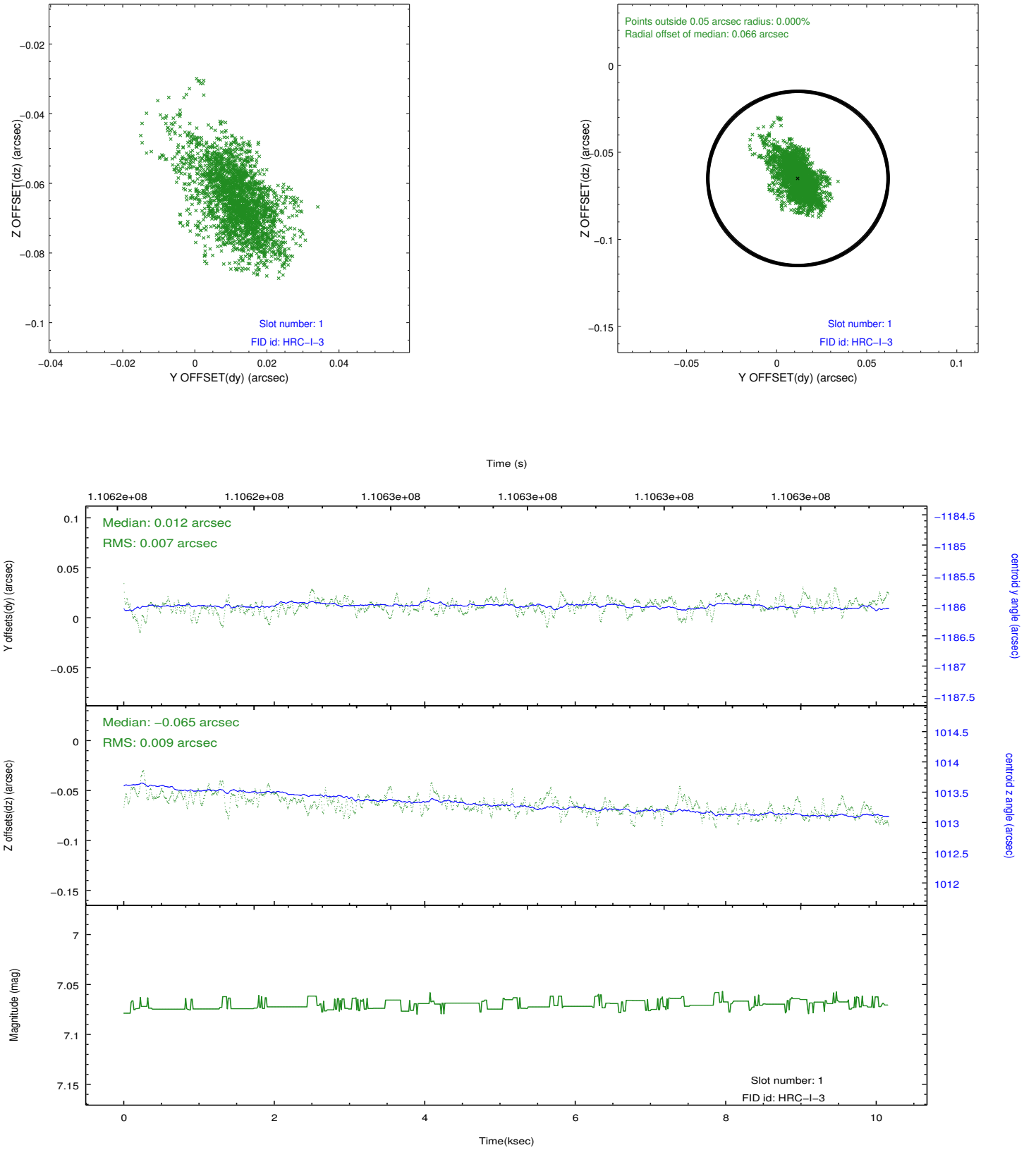


## 2.5 FID Slots

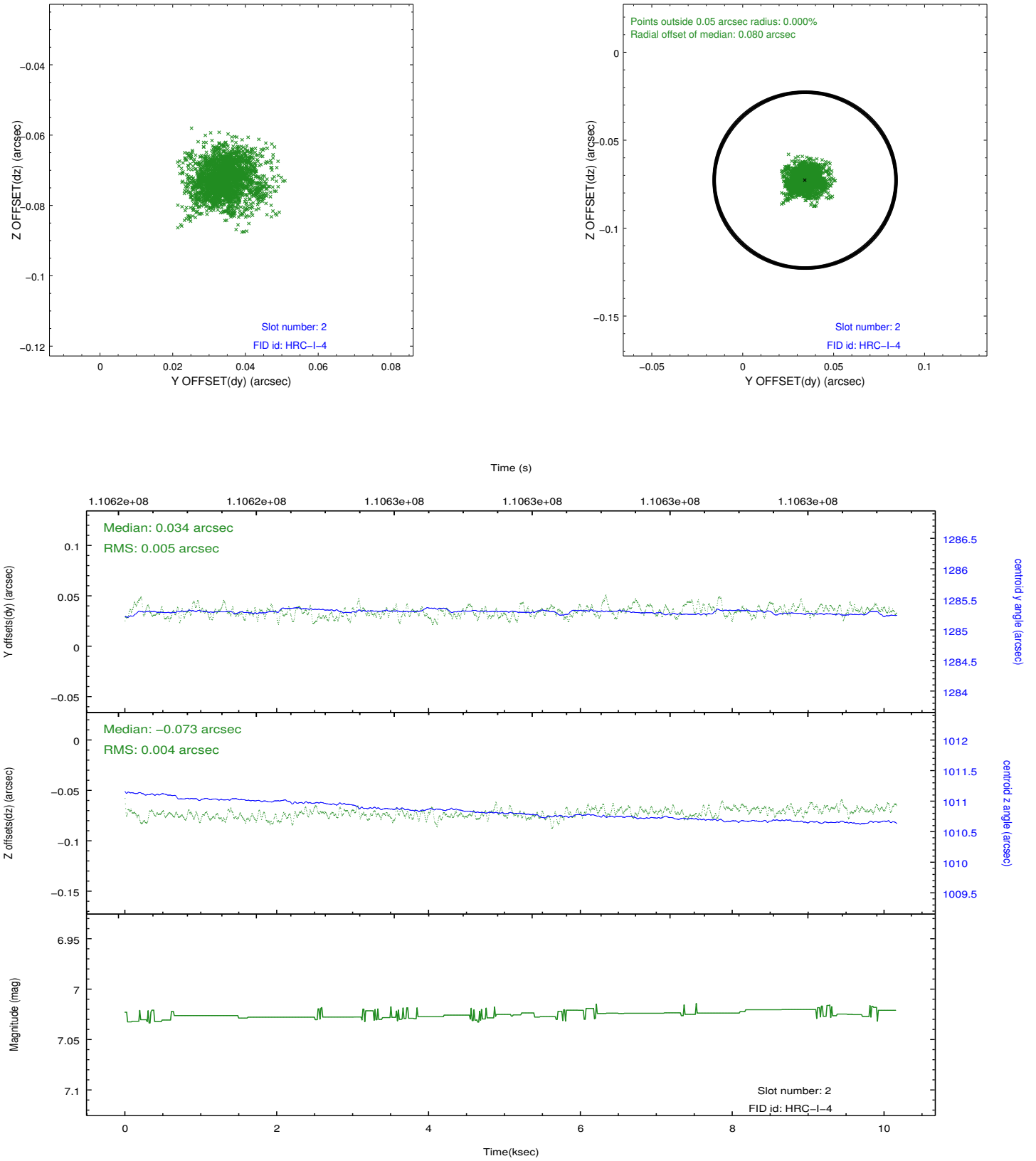
### 2.5.1 Slot 0



## 2.5.2 Slot 1



### 2.5.3 Slot 2



## A Summary

### A.1 Status

V&V Scientist	Beth Sundheim
V&V Date (YYYY-MM-DD)	2012.09.21
V&V Edition	1
V&V Disposition and Status	OK
V&V Charge Time	9.868

### A.2 Comments