

V&V Reference Report

L2 ASCDS Version : 7.6.10

Observation 1958 - L2 Version 001
Chandra X-Ray Center

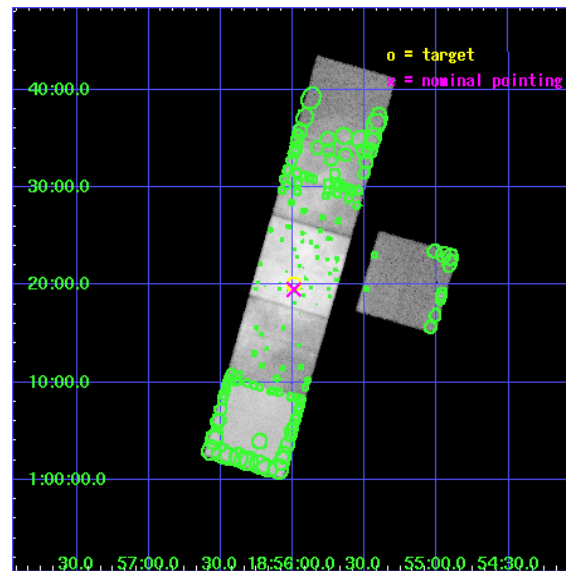
L2 Processing Date : Jun 14 2007

Contents

1	Front	2
2	OBI	3
2.1	OBI	3
2.1.1	Images	3
2.1.2	Bias	3
2.1.3	Parameters	4
2.1.4	Events	4
2.2	Compared Parameters	5
2.3	Aspect	6
2.4	Star Slots	9
2.4.1	Slot 3	9
2.4.2	Slot 4	10
2.4.3	Slot 5	11
2.4.4	Slot 6	12
2.4.5	Slot 7	13
2.5	FID Slots	14
2.5.1	Slot 0	14
2.5.2	Slot 1	15
2.5.3	Slot 2	16
3	Point Sources	17
A	Summary	18
A.1	Status	18
A.2	Comments	18

1 Front

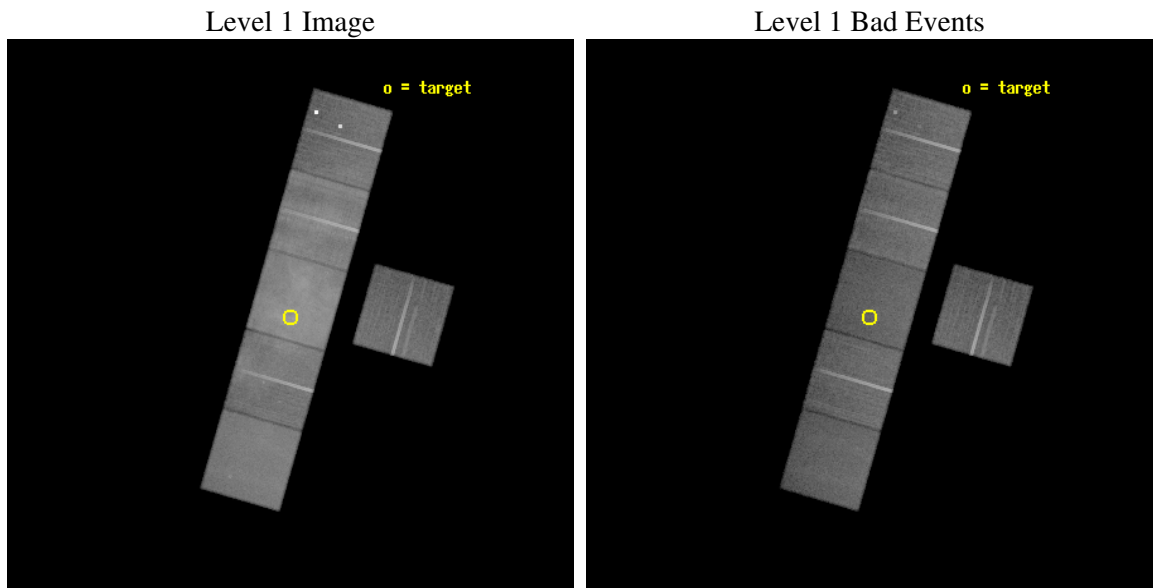
seq_num	500135
obs_id	1958
title	EXPLORING THE MYSTERIES OF MIXED MORPHOLOGY SUPERNOVA REMNANTS
observer	Dr. Robin Shelton
object	W44 CENTER
dtcycle	0
cycle	P
ra_targ	283.997083
dec_targ	1.335278
ra_nom	283.9980485305
dec_nom	1.3254342725358
roll_nom	286.01292810462
revision	2
ontime	46140.800042972
livetime	45556.537450174
ontime3	46137.55909273
ontime5	46137.559082717
ontime6	46140.800042972
ontime7	46140.800042972
ontime8	46137.55905281
ontime9	46140.800042972
l2events	1003243



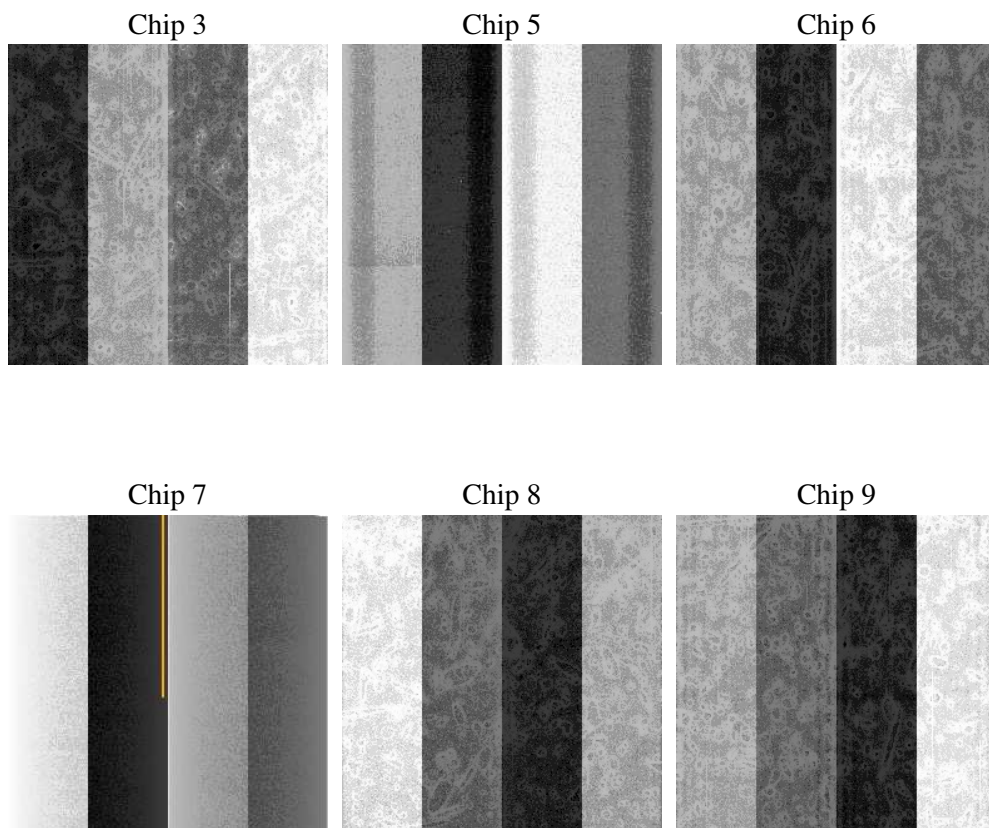
2 OBI

2.1 OBI

2.1.1 Images



2.1.2 Bias



2.1.3 Parameters

obi_num	0
ascdsver	7.6.10
caldsver	3.4.0
date	2007-06-14T10:35:03
revision	2

sched_exp_time	46000.000000
ontime	46140.800042972
ontime3	46137.55909273
ontime5	46137.559082717
ontime6	46140.800042972
ontime7	46140.800042972
ontime8	46137.55905281
ontime9	46140.800042972
l1events	2640276

2.1.4 Events

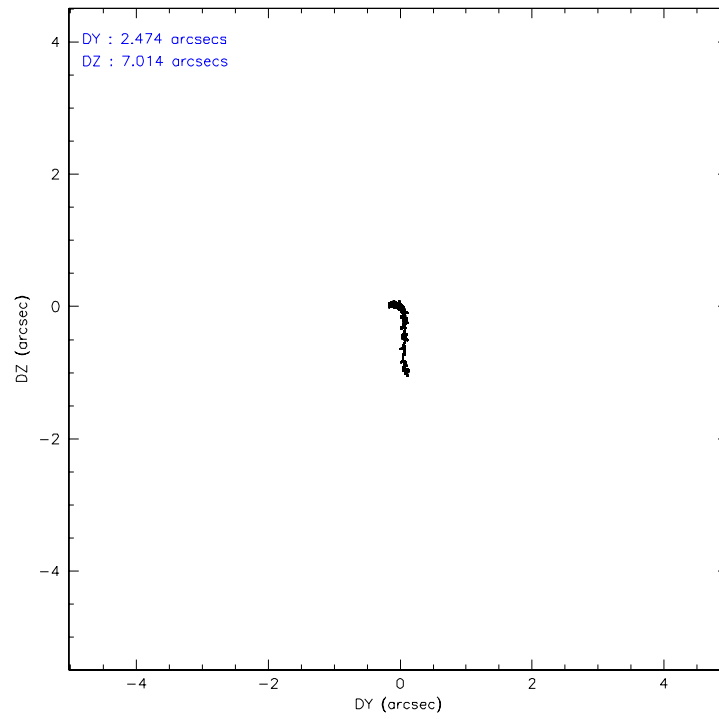
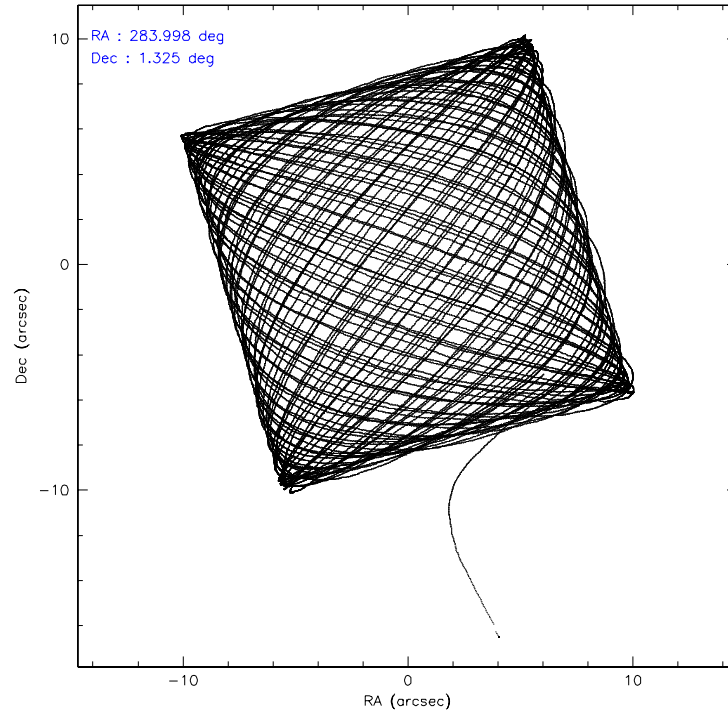
	ccd 3	ccd 5	ccd 6	ccd 7	ccd 8	ccd 9
level 1 events	293058	416721	410328	643823	510470	365876
rejected events	250120	210054	260997	207294	293777	269782
rejected %	85%	50%	63%	32%	57%	73%

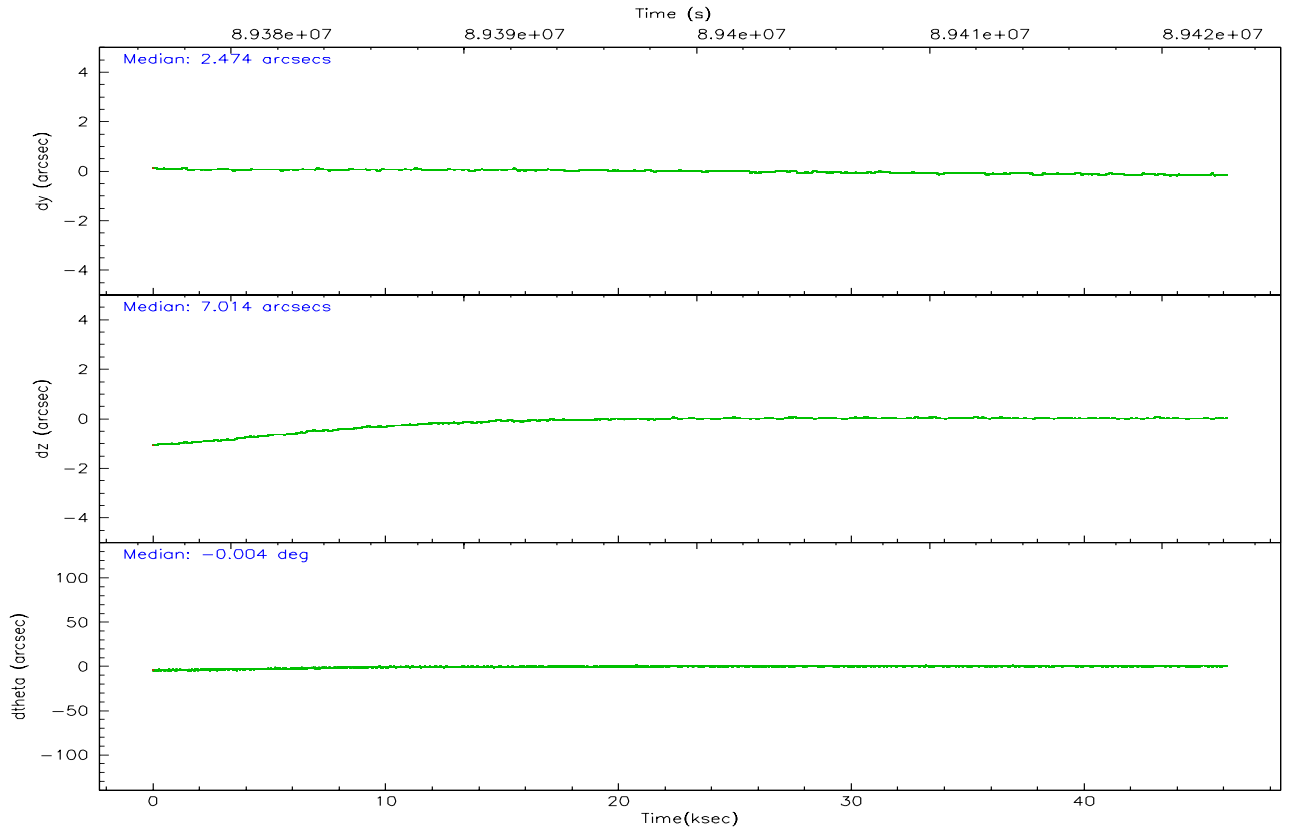
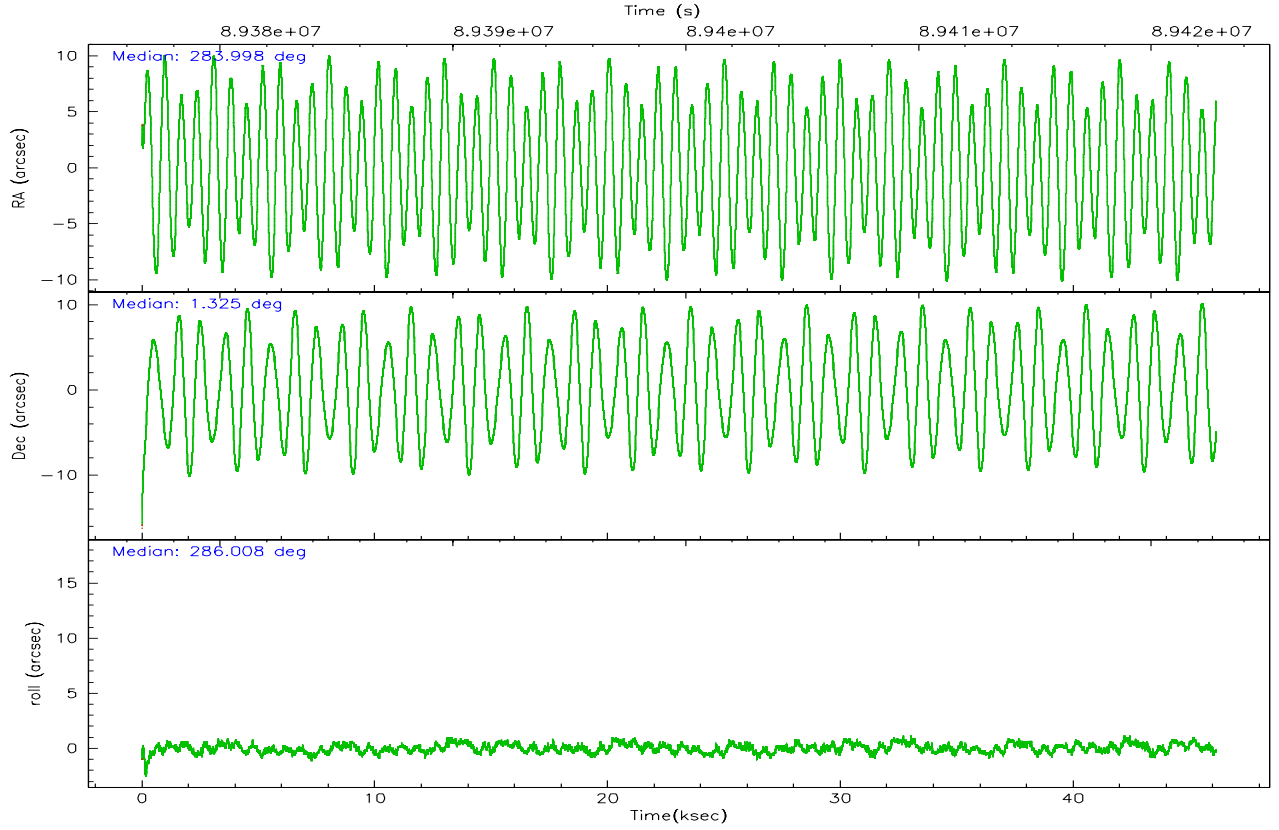
	ccd 3	ccd 5	ccd 6	ccd 7	ccd 8	ccd 9
grade 0 events	21801	22856	108626	87102	121402	32458
	7%	5%	26%	13%	23%	8%
grade 1 events	158	437	408	407	590	224
	0%	0%	0%	0%	0%	0%
grade 2 events	8564	59928	19782	104198	32017	47156
	2%	14%	4%	16%	6%	12%
grade 3 events	3148	11216	6397	47210	17732	3837
	1%	2%	1%	7%	3%	1%
grade 4 events	3221	11127	6404	47179	16362	3670
	1%	2%	1%	7%	3%	1%
grade 5 events	10220	30028	11519	35140	15279	13160
	3%	7%	2%	5%	2%	3%
grade 6 events	6358	102236	8614	152344	29895	9318
	2%	24%	2%	23%	5%	2%
grade 7 events	239588	178893	248578	170243	277193	256053
	81%	42%	60%	26%	54%	69%

2.2 Compared Parameters

Parameter	Planned	Actual	Parameter	Planned	Actual
Instrument	ACIS	ACIS	Obspar format version number	6	6
Detector	ACIS-356789	ACIS-356789	Obspar file type	PREDICTED	ACTUAL
Grating	NONE	NONE	Obspar update status	NONE	UPDATED
Data mode	FAINT	FAINT	Number of optional ACIS chips dropped	0	0
Observation mode	POINTING	POINTING	On-chip summing requested	N	N
Pointing RA	283.978228	283.9980485305049	Subarray requested	NONE	NONE
Pointing Dec	1.344306	1.325434272535755	Alternating exposures requested	N	N
Pointing Roll	285.856758	286.0129281046231	Primary exposure time	0.000000	3.2
SIM focus pos (mm)	-0.684267	-0.6828225247311905			
SIM defocus (mm)	0	0.001444936568705701			
SIM translation stage pos (mm)	-190.132523	-190.1400660498719			
SIM translation stage offset (mm)	0	0.00754346686406393			
Observation start time	89376792.184000	89375654.510915			
Observation start date	2000-10-31T10:52:08	2000-10-31T10:34:14			
Observation end time	89422792.184000	89423592.225225			
Observation end date	2000-10-31T23:38:48	2000-10-31T23:53:12			
Read mode	TIMED	TIMED			

2.3 Aspect



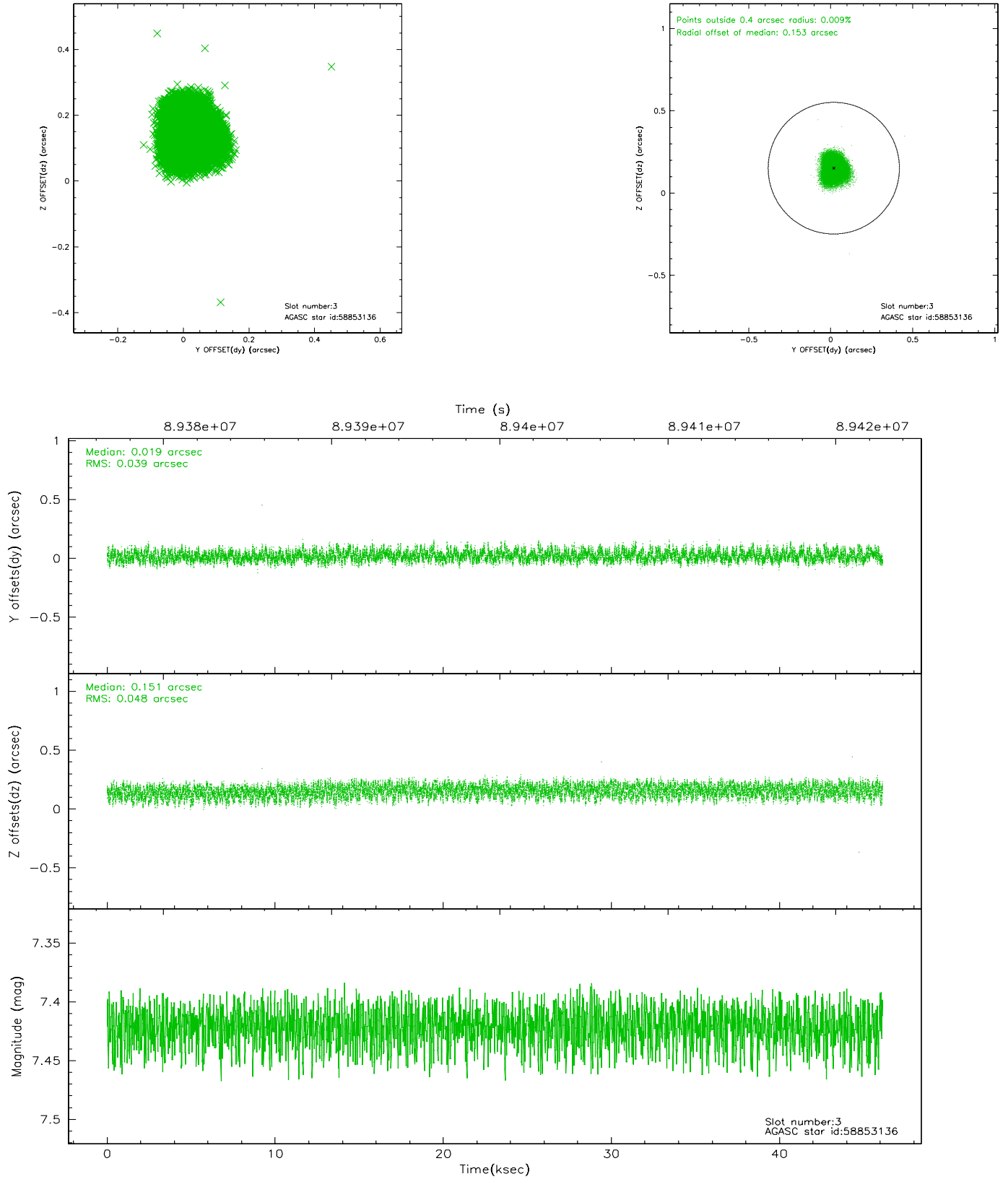


Slot Statistics

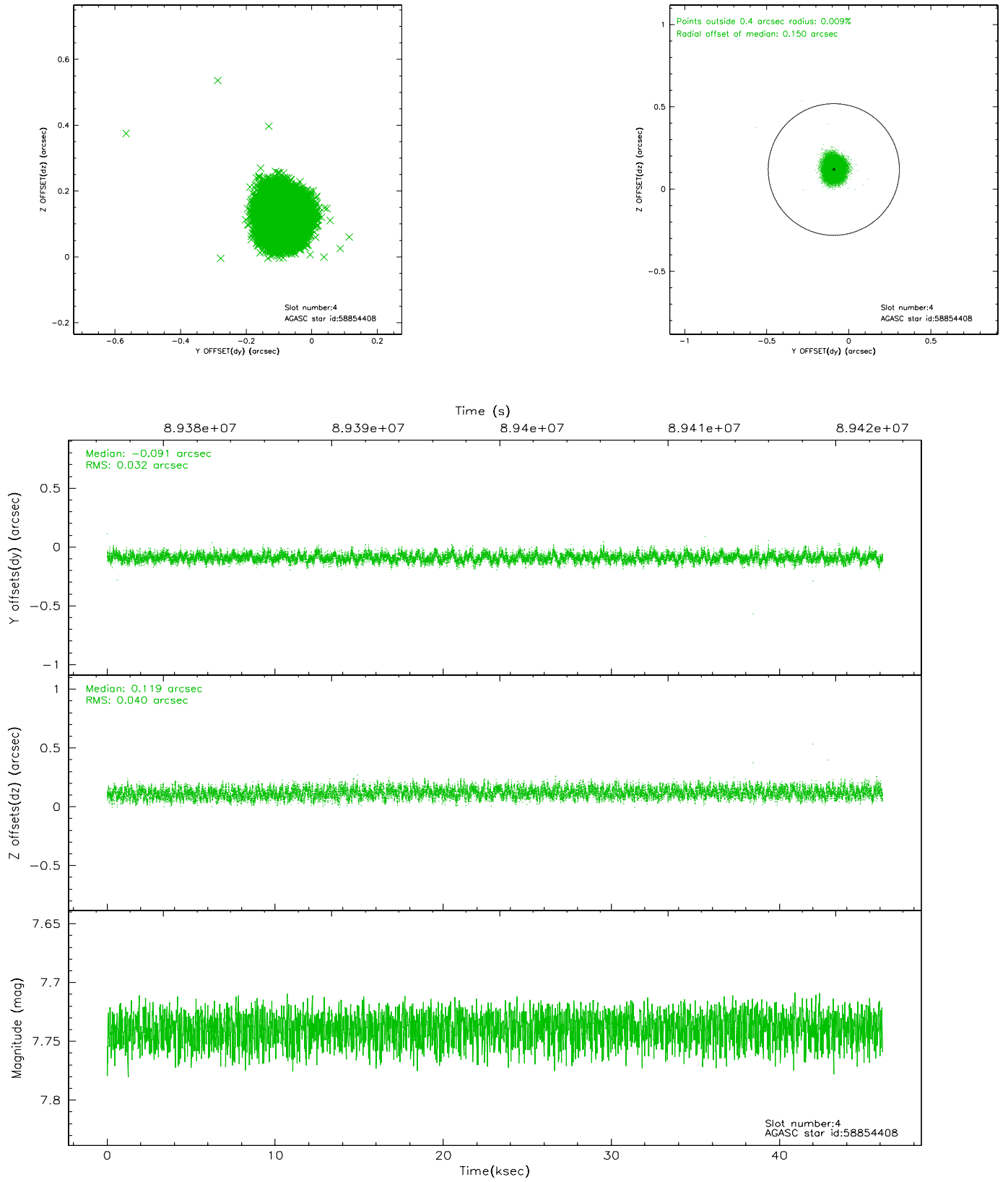
slot	status	id	mag	n_pts	med_dy	med_dz	dr1	dr2	ra	dec	mean_y	mean_z
0	FID	ACIS-S-2	7.11	11255	-0.010	0.021	0.011	0.024	0.000000	0.000000	-755.10	-1727.99
1	FID	ACIS-S-4	7.20	11254	-0.066	-0.001	0.009	0.020	0.000000	0.000000	2158.13	180.47
2	FID	ACIS-S-5	7.23	11255	0.045	-0.012	0.011	0.024	0.000000	0.000000	-1807.89	174.13
3	GUIDE	58853136	7.42	22508	0.019	0.151	0.067	0.103	284.607098	1.198128	1124.22	2034.29
4	GUIDE	58854408	7.74	22507	-0.091	0.119	0.055	0.087	284.268664	1.500448	-255.40	1159.65
5	GUIDE	58851592	8.00	22507	-0.234	-0.141	0.065	0.113	283.282615	1.755471	-2108.36	-2003.19
6	GUIDE	58857944	8.54	22498	0.208	-0.079	0.052	0.083	284.113428	0.970825	1426.39	101.14
7	GUIDE	58852304	9.34	22495	0.097	-0.041	0.090	0.149	283.709254	1.197635	243.55	-1075.14

2.4 Star Slots

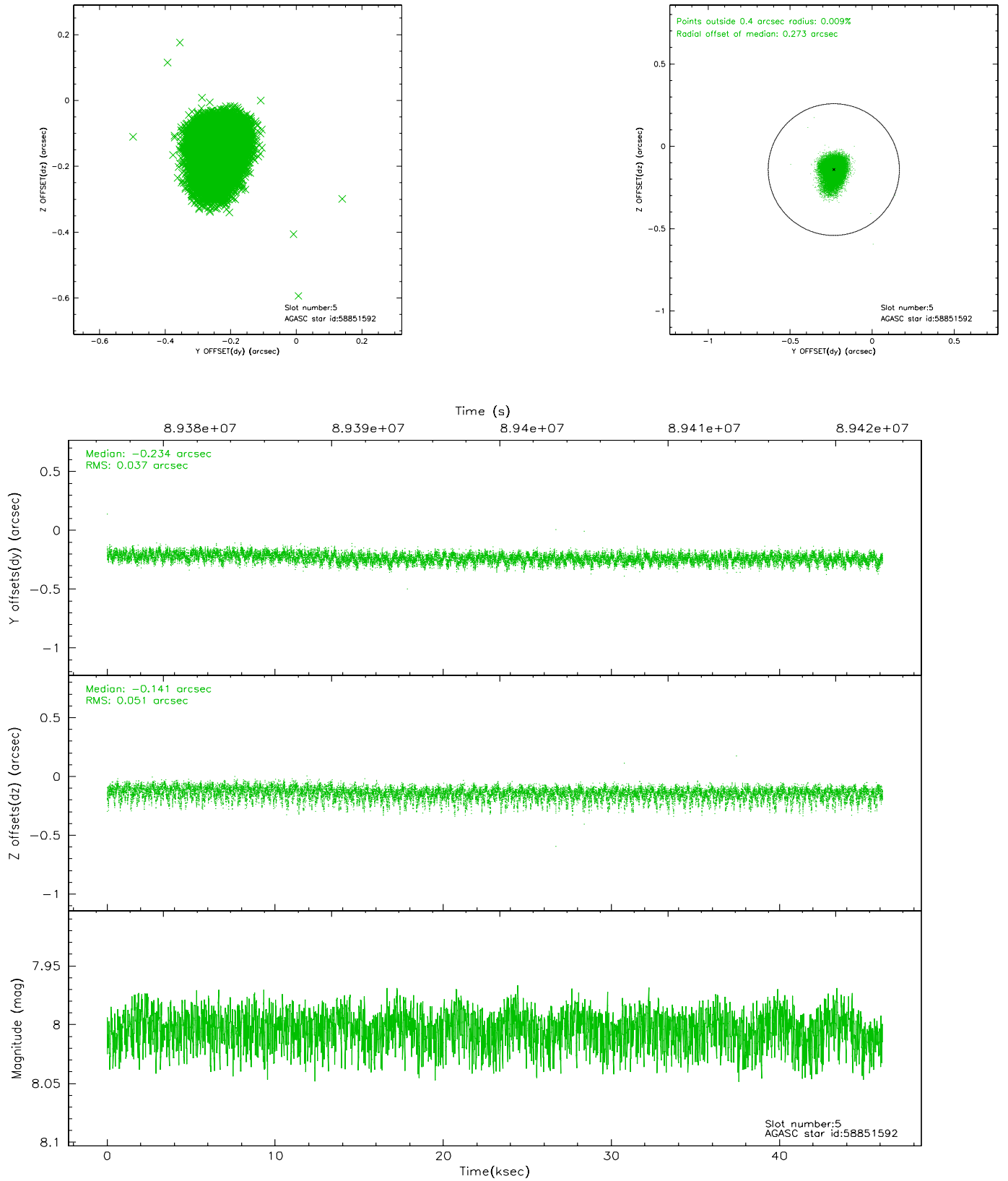
2.4.1 Slot 3



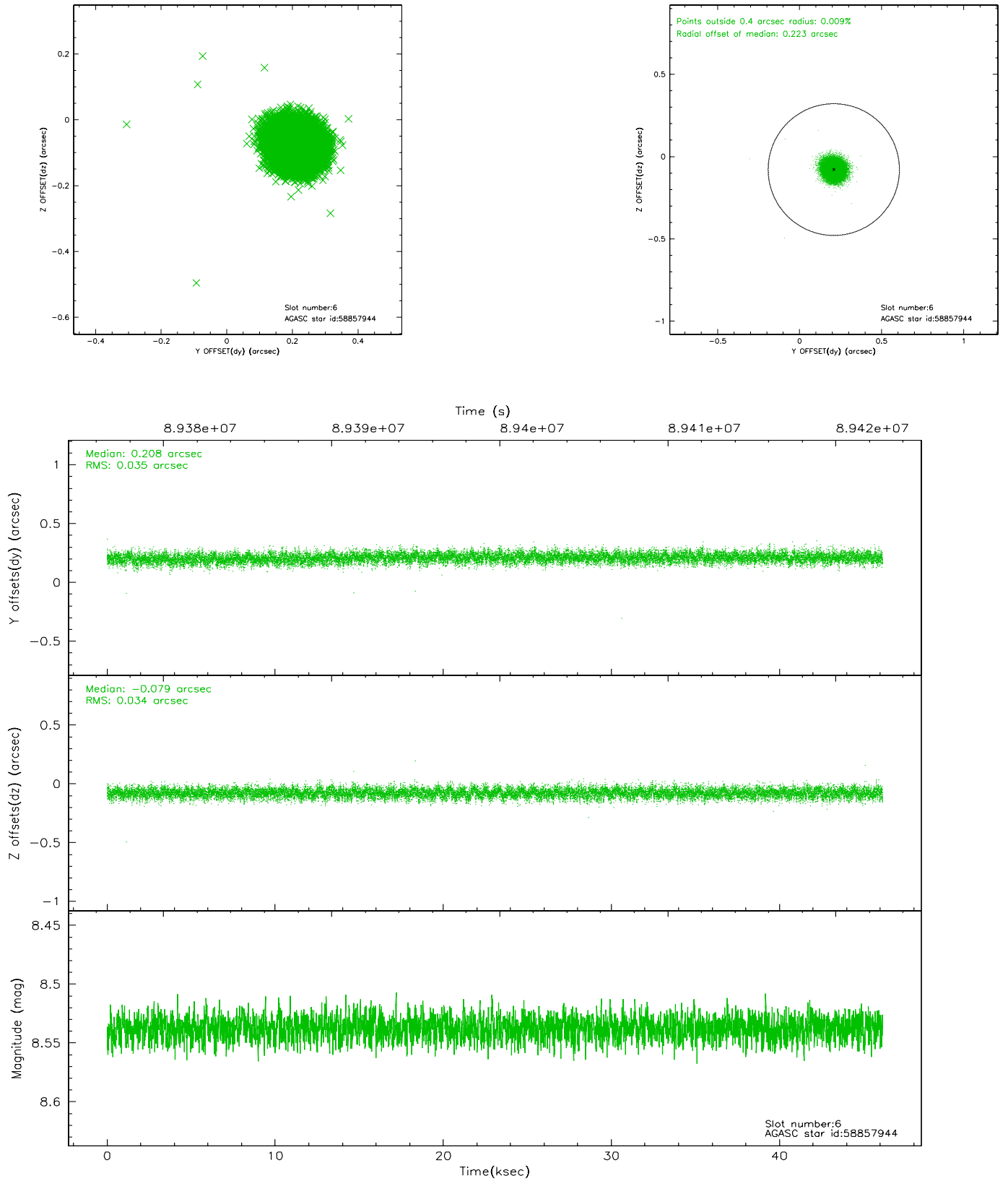
2.4.2 Slot 4



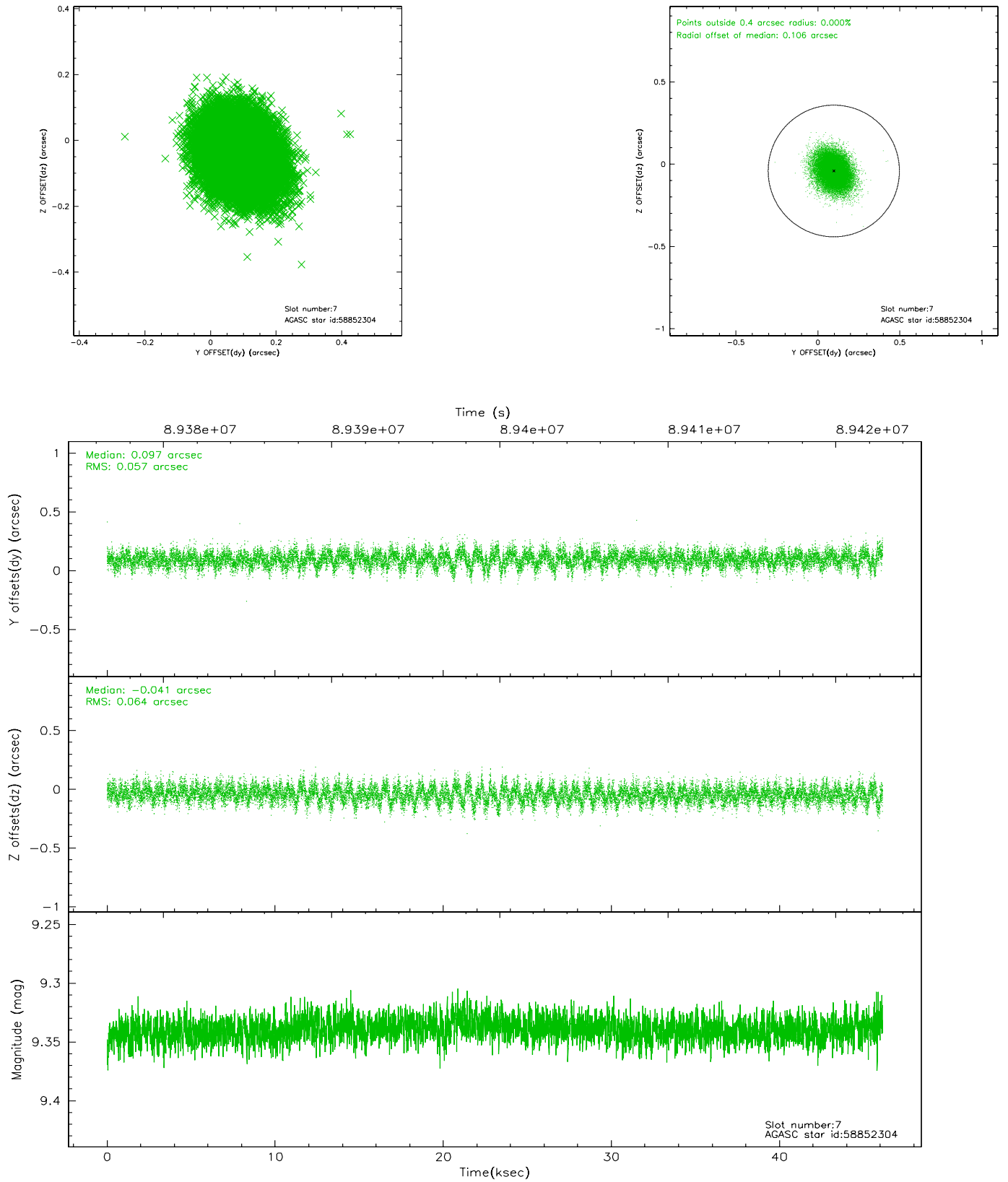
2.4.3 Slot 5



2.4.4 Slot 6

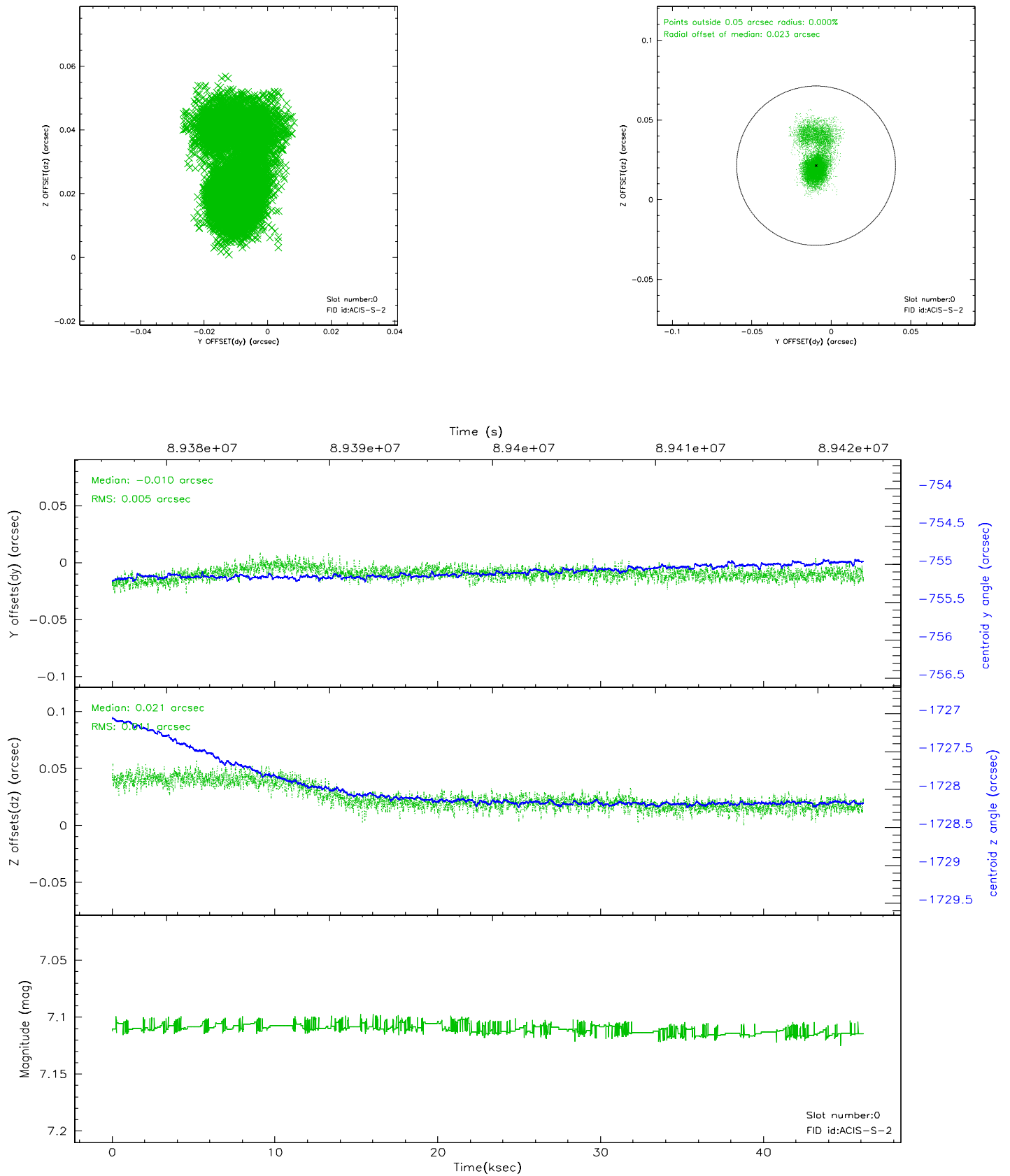


2.4.5 Slot 7

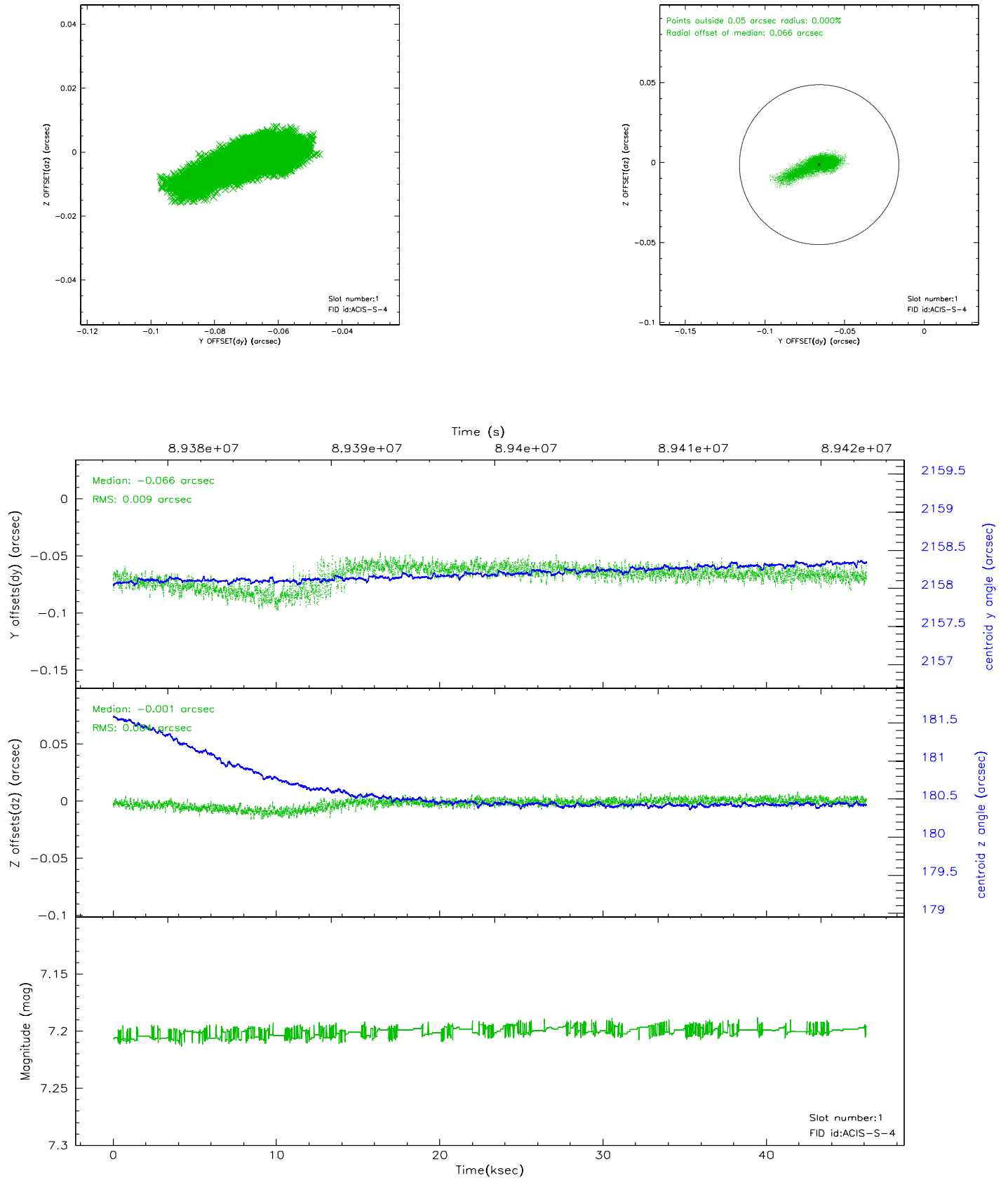


2.5 FID Slots

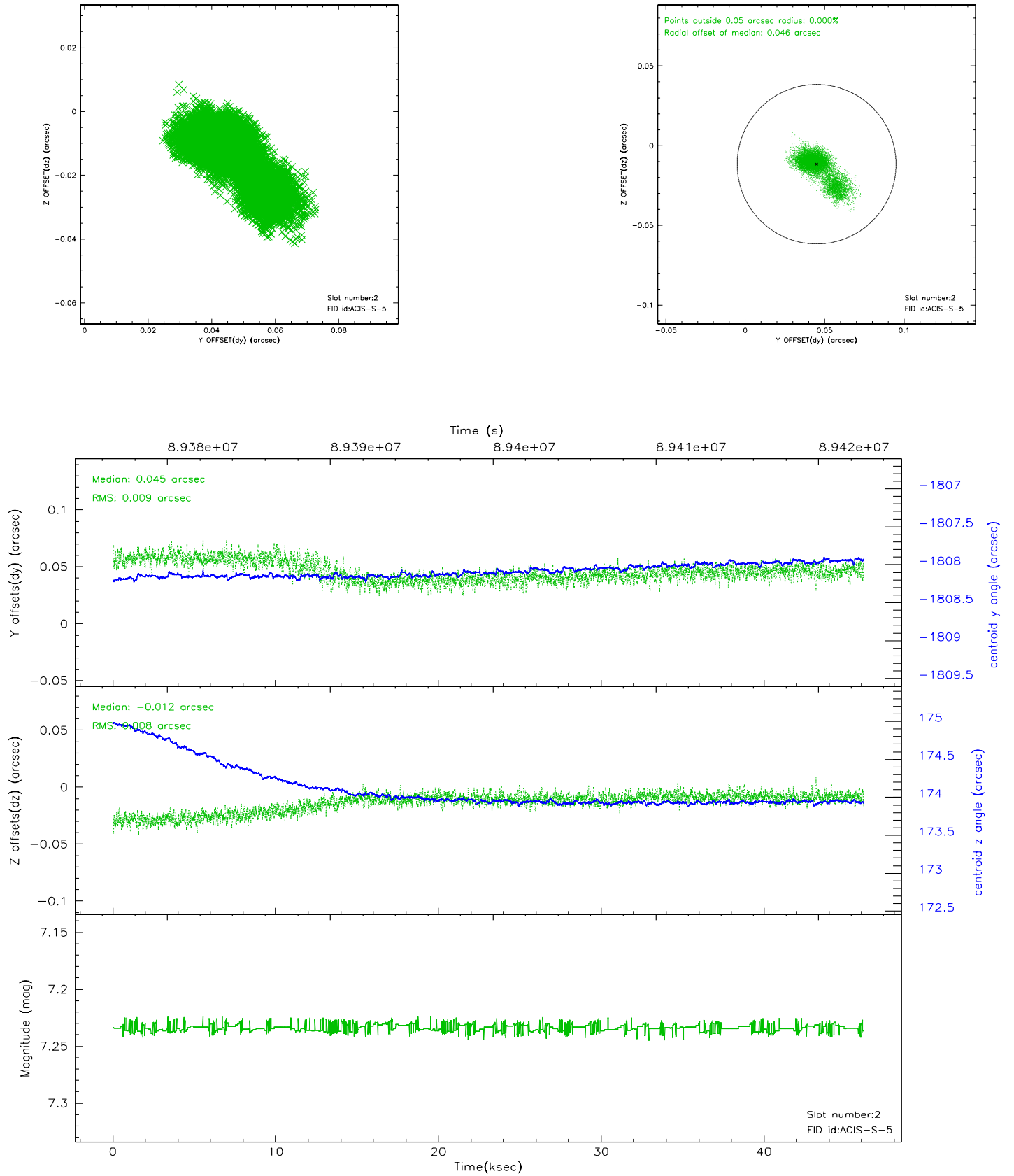
2.5.1 Slot 0



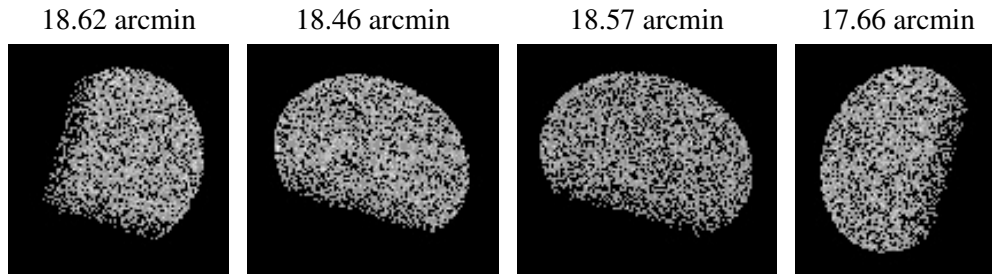
2.5.2 Slot 1



2.5.3 Slot 2



3 Point Sources



A Summary

A.1 Status

V&V Scientist	Jen Lauer
V&V Date (YYYY-MM-DD)	2007.06.14
V&V Edition	1
V&V Disposition and Status	OK
V&V Charge Time	46.14

A.2 Comments

Roll constraint met.