

V&V Reference Report

L2 ASCDS Version : 7.6.9

Observation 1048 - L2 Version 001
Chandra X-Ray Center

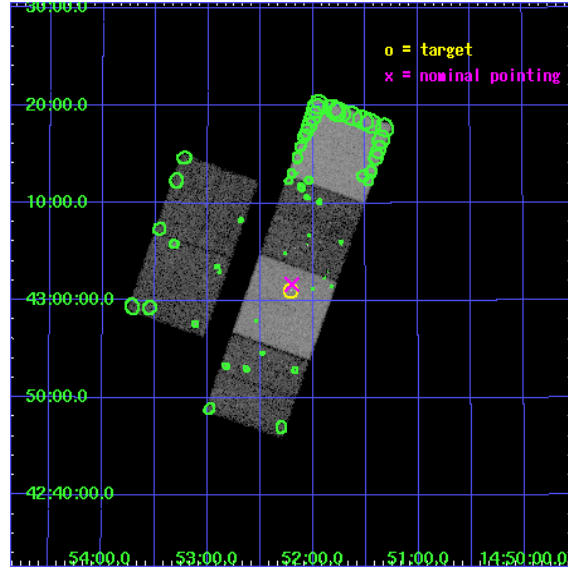
L2 Processing Date : Nov 7 2006

Contents

1	Front	2
2	OBI	3
2.1	OBI	3
2.1.1	Images	3
2.1.2	Bias	3
2.1.3	Parameters	4
2.1.4	Events	4
2.2	Compared Parameters	5
2.3	Aspect	6
2.4	Star Slots	9
2.4.1	Slot 3	9
2.4.2	Slot 4	10
2.4.3	Slot 5	11
2.4.4	Slot 6	12
2.4.5	Slot 7	13
2.5	FID Slots	14
2.5.1	Slot 0	14
2.5.2	Slot 1	15
2.5.3	Slot 2	16
3	Point Sources	17
A	Summary	18
A.1	Status	18
A.2	Comments	18

1 Front

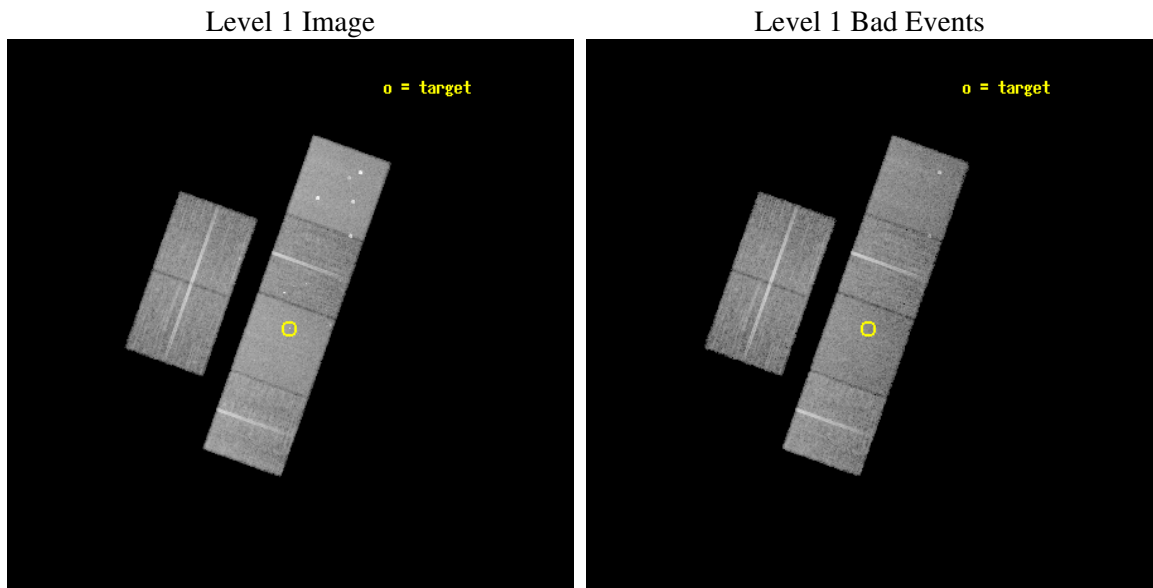
seq_num	500114
obs_id	1048
title	GAMMA-RAY BURSTS: DISCOVERING THE PROGENITORS AND UNDERSTANDING THE EXPLOSION
observer	Prof. Shrinivas Kulkarni
object	GRB 010222
dtcycle	0
cycle	P
ra_targ	223.0525
dec_targ	43.018417
ra_nom	223.05028315358
dec_nom	43.028108778104
roll_nom	109.61138133843
revision	2
ontime	17904.000016674
livetime	17677.288787969
ontime2	17900.759056434
ontime3	17904.000016674
ontime5	17904.000016674
ontime6	17904.000016674
ontime7	17904.000016674
ontime8	17904.000016674
l2events	165309



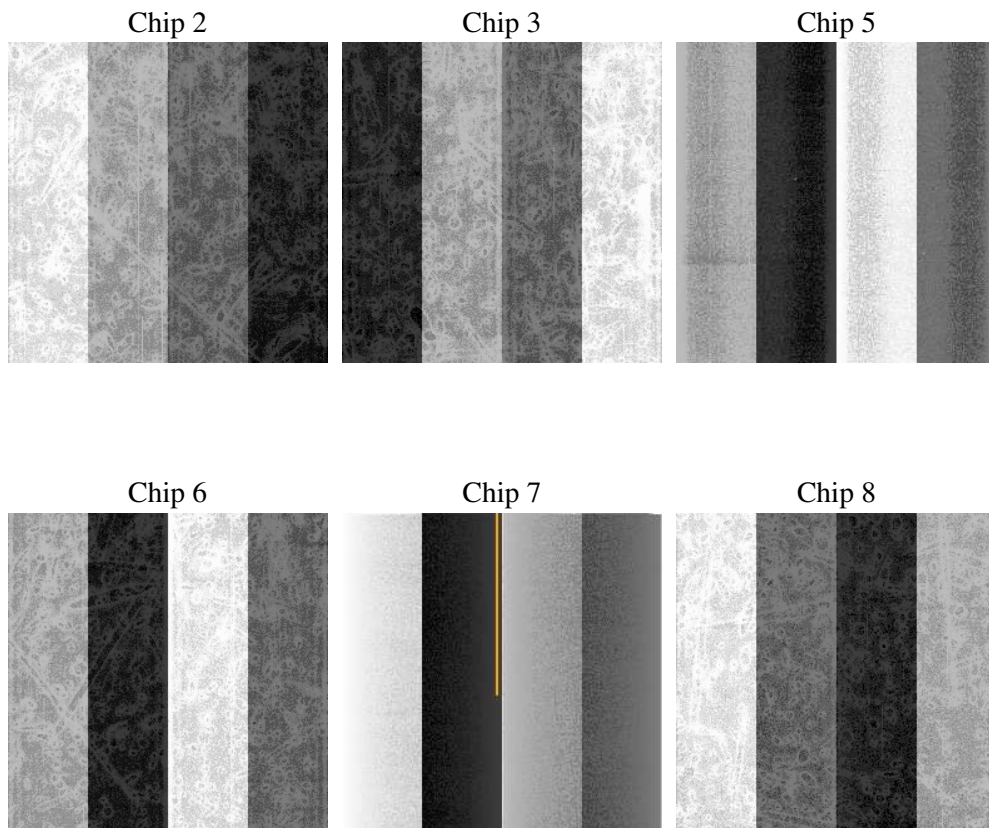
2 OBI

2.1 OBI

2.1.1 Images



2.1.2 Bias



2.1.3 Parameters

obi_num	0
ascdsver	7.6.9
caldsver	3.2.3
date	2006-11-07T21:24:05
revision	2

sched_exp_time	18000.000000
ontime	17909.759512216
ontime2	17906.518551975
ontime3	17909.759512216
ontime5	17909.759512216
ontime6	17909.759512216
ontime7	17909.759512216
ontime8	17909.759512216
l1events	801229

2.1.4 Events

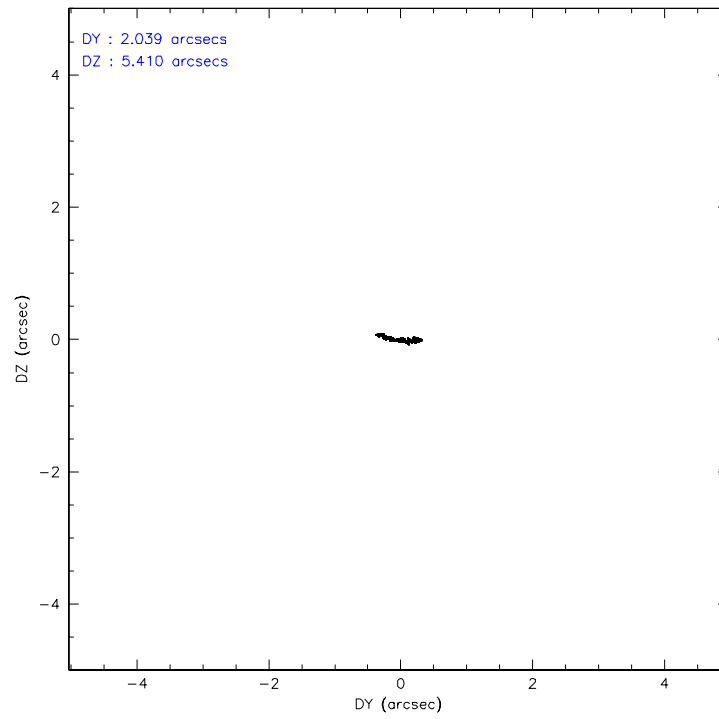
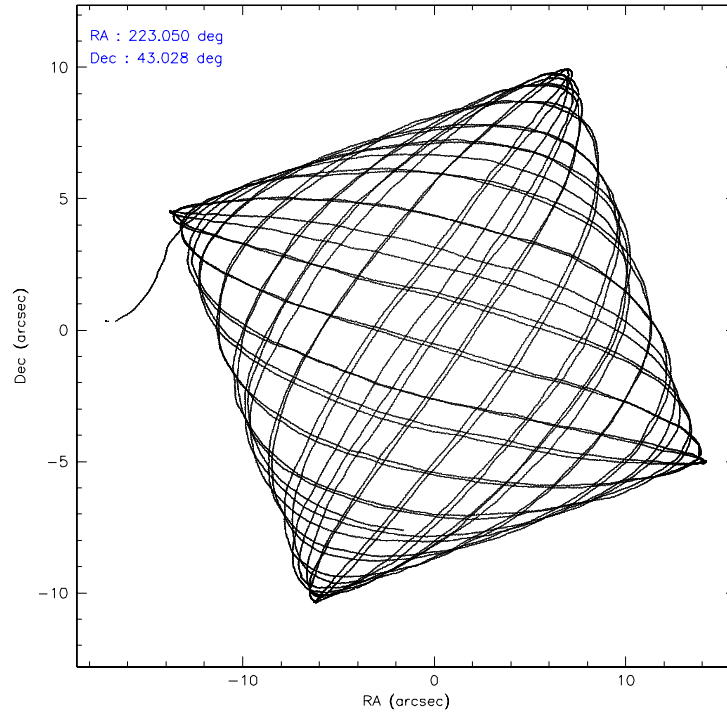
	ccd 2	ccd 3	ccd 5	ccd 6	ccd 7	ccd 8
level 1 events	118767	112224	163855	114963	146827	144593
rejected events	105952	99769	90707	101062	91313	115989
rejected %	89%	88%	55%	87%	62%	80%

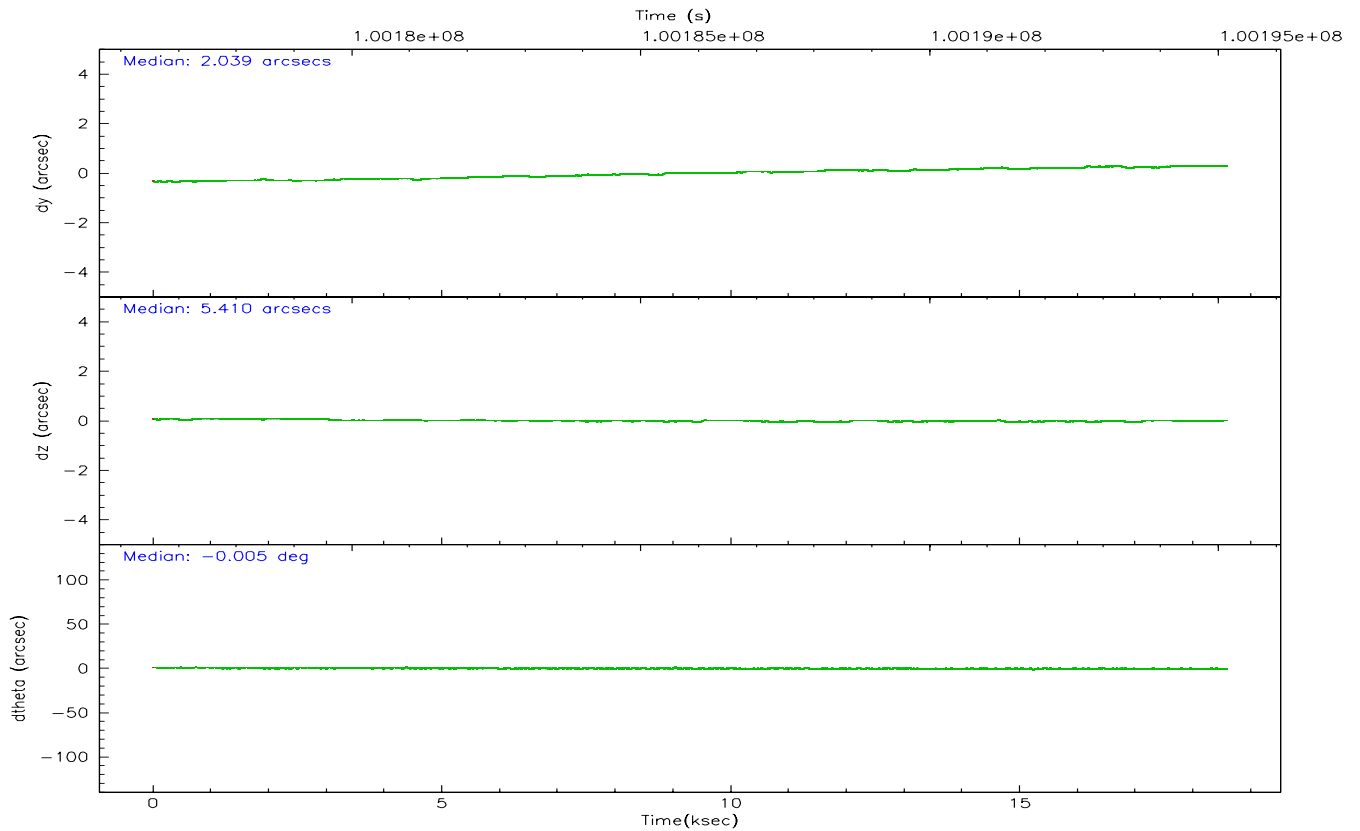
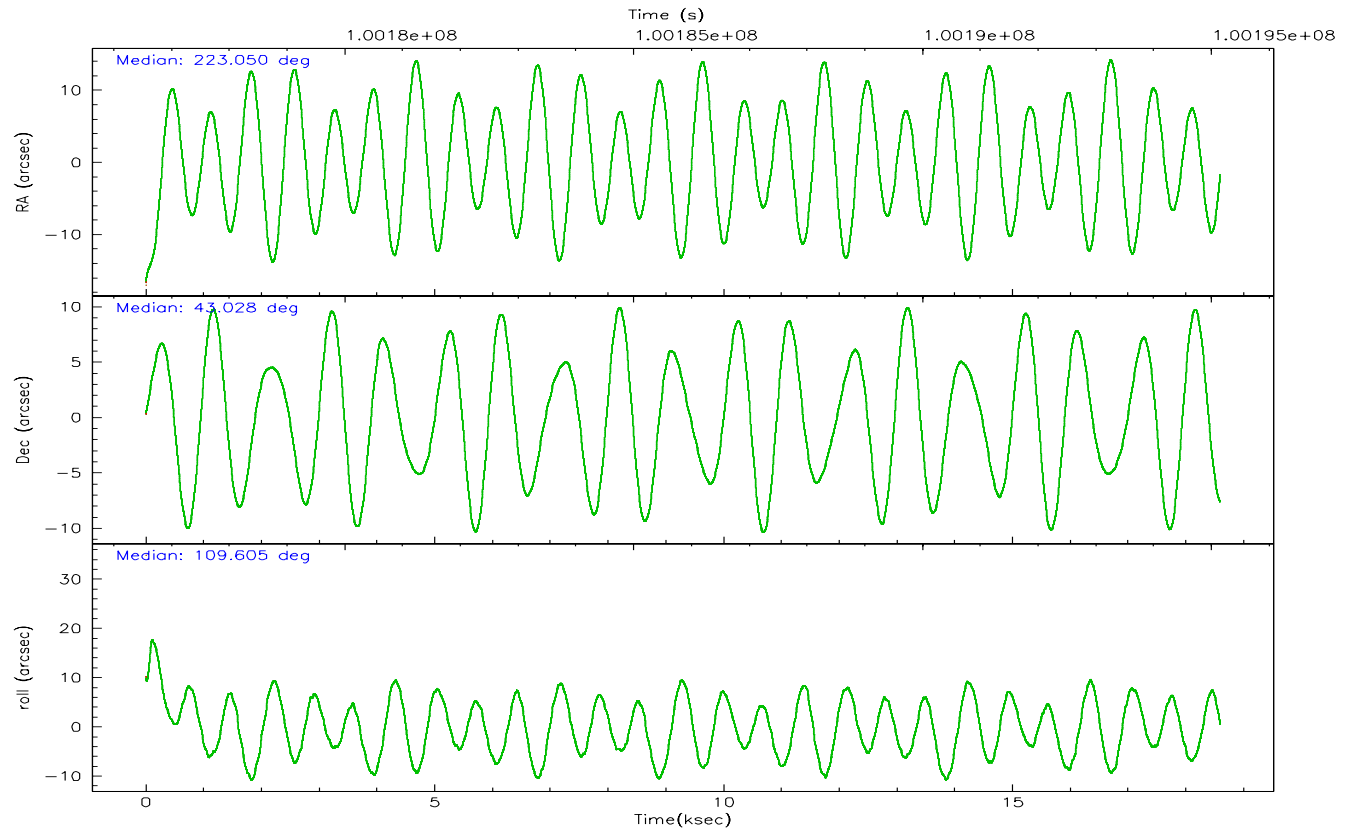
	ccd 2	ccd 3	ccd 5	ccd 6	ccd 7	ccd 8
grade 0 events	5320	5326	8996	5980	3511	8801
	4%	4%	5%	5%	2%	6%
grade 1 events	56	49	585	50	100	74
	0%	0%	0%	0%	0%	0%
grade 2 events	2844	2420	21579	2685	13557	6155
	2%	2%	13%	2%	9%	4%
grade 3 events	1183	1239	1572	1363	2969	3030
	0%	1%	0%	1%	2%	2%
grade 4 events	1228	1243	1439	1301	2772	2844
	1%	1%	0%	1%	1%	1%
grade 5 events	4050	4263	7965	4841	9643	5994
	3%	3%	4%	4%	6%	4%
grade 6 events	2247	2231	39584	2573	32720	7780
	1%	1%	24%	2%	22%	5%
grade 7 events	101839	95453	82135	96170	81555	109915
	85%	85%	50%	83%	55%	76%

2.2 Compared Parameters

Parameter	Planned	Actual	Parameter	Planned	Actual
Instrument	ACIS	ACIS	Obspar format version number	6	6
Detector	ACIS-235678	ACIS-235678	Obspar file type	PREDICTED	ACTUAL
Grating	NONE	NONE	Obspar update status	NONE	UPDATED
Data mode	FAINT	FAINT	Number of optional ACIS chips dropped	0	0
Observation mode	POINTING	POINTING	On-chip summing requested	N	N
Pointing RA	223.079009	223.0502831535753	Subarray requested	NONE	NONE
Pointing Dec	43.010587	43.02810877810382	Alternating exposures requested	N	N
Pointing Roll	109.435161	109.6113813384276	Primary exposure time	0.000000	3.2
SIM focus pos (mm)	-0.684267	-0.6828225247311905			
SIM defocus (mm)	0	0.001444936568705701			
SIM translation stage pos (mm)	-190.132523	-190.1425803651734			
SIM translation stage offset (mm)	0	0.01005778216563158			
Observation start time	100177155.184000	100175995.87474			
Observation start date	2001-03-05T10:58:11	2001-03-05T10:39:55			
Observation end time	100195155.184000	100195684.58801			
Observation end date	2001-03-05T15:58:11	2001-03-05T16:08:04			
Read mode	TIMED	TIMED			

2.3 Aspect



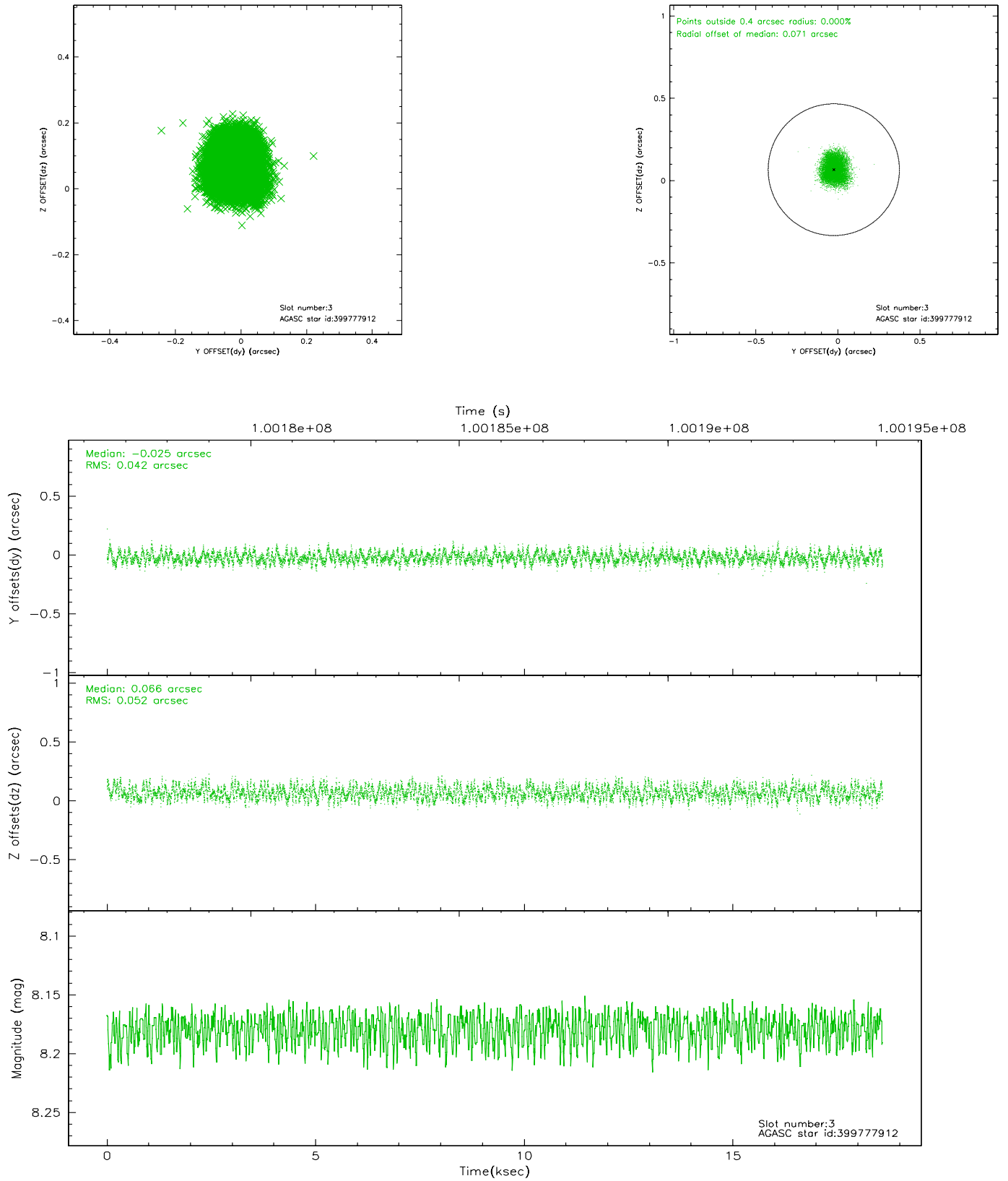


Slot Statistics

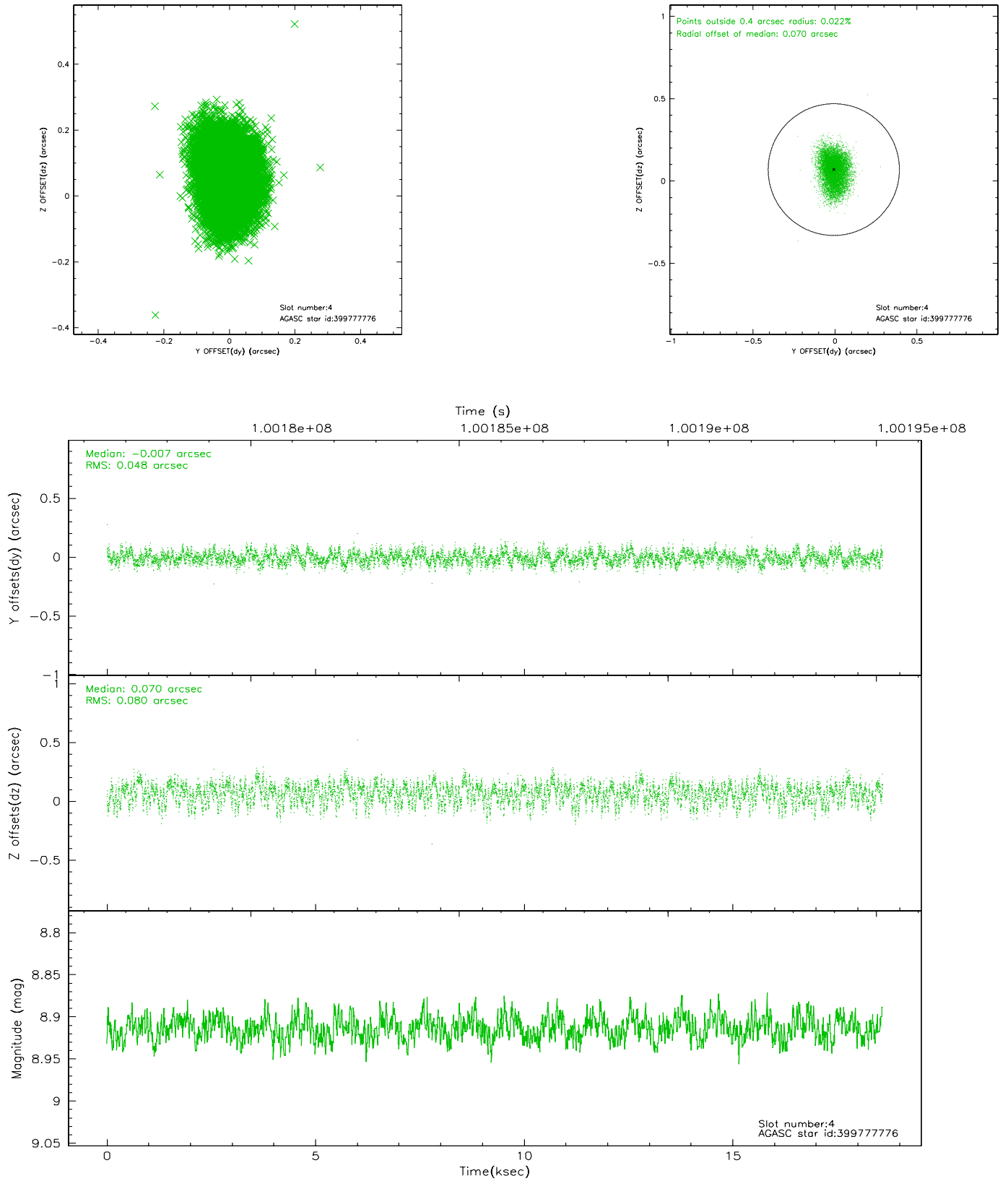
slot	status	id	mag	n_pts	med_dy	med_dz	dr1	dr2	ra	dec	mean_y	mean_z
0	FID	ACIS-S-2	7.12	4534	-0.030	0.018	0.007	0.011	0.000000	0.000000	-754.62	-1726.49
1	FID	ACIS-S-4	7.20	4535	-0.064	0.010	0.005	0.009	0.000000	0.000000	2158.48	181.84
2	FID	ACIS-S-5	7.24	4535	0.063	-0.018	0.006	0.011	0.000000	0.000000	-1807.14	175.63
3	GUIDE	399777912	8.18	9070	-0.025	0.066	0.073	0.111	224.004611	42.792463	-1541.26	-2049.52
4	GUIDE	399777776	8.91	9068	-0.007	0.070	0.099	0.161	223.999033	42.858412	-1311.94	-2112.36
5	GUIDE	399642384	9.69	9066	0.021	-0.078	0.084	0.137	222.533684	42.728698	-473.05	1695.31
6	GUIDE	399647344	9.54	9060	-0.040	0.094	0.098	0.156	223.296429	43.683105	2095.47	-1339.56
7	GUIDE	399250512	10.23	9063	0.047	-0.152	0.130	0.204	222.480665	42.463397	-1323.60	2151.28

2.4 Star Slots

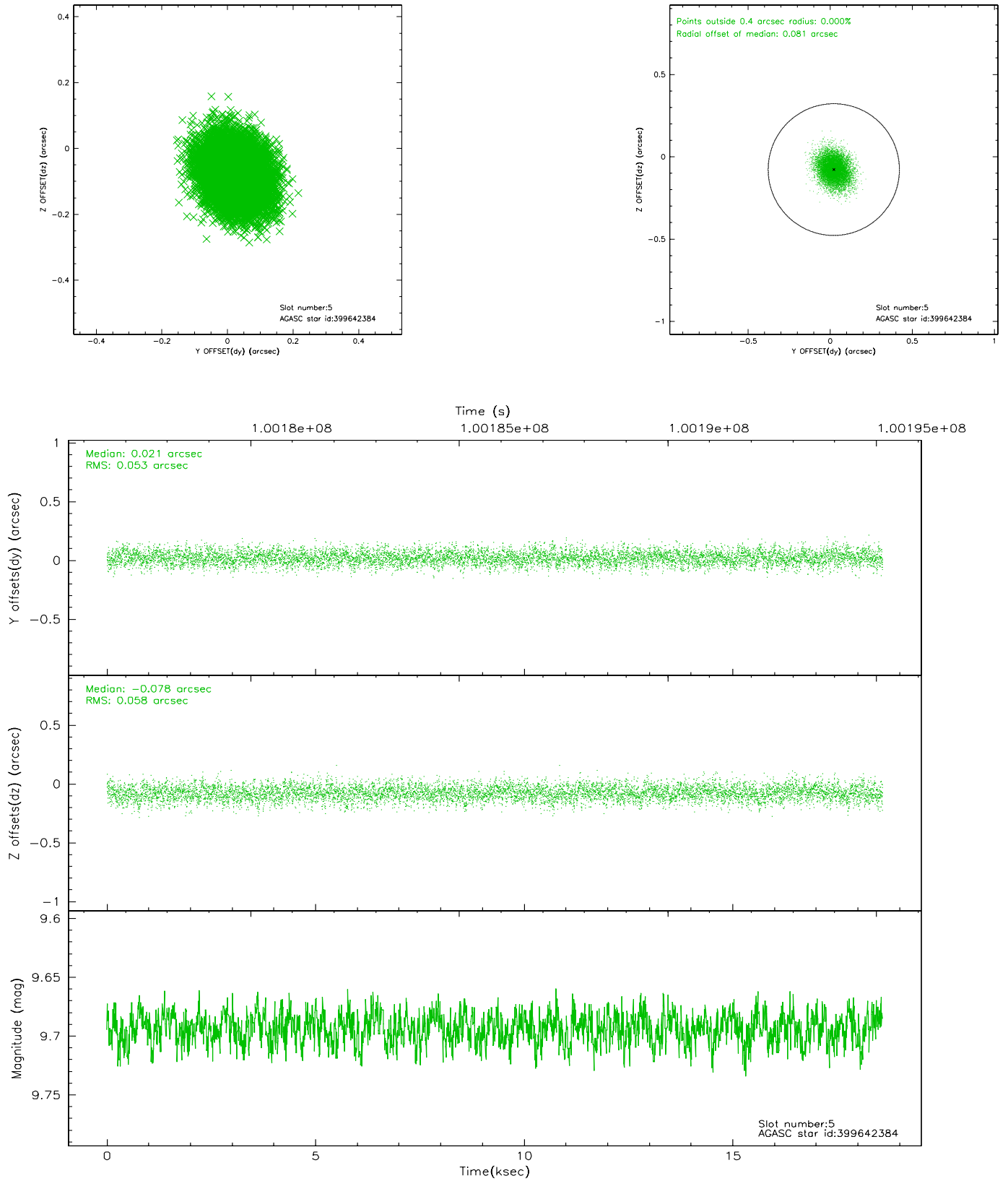
2.4.1 Slot 3



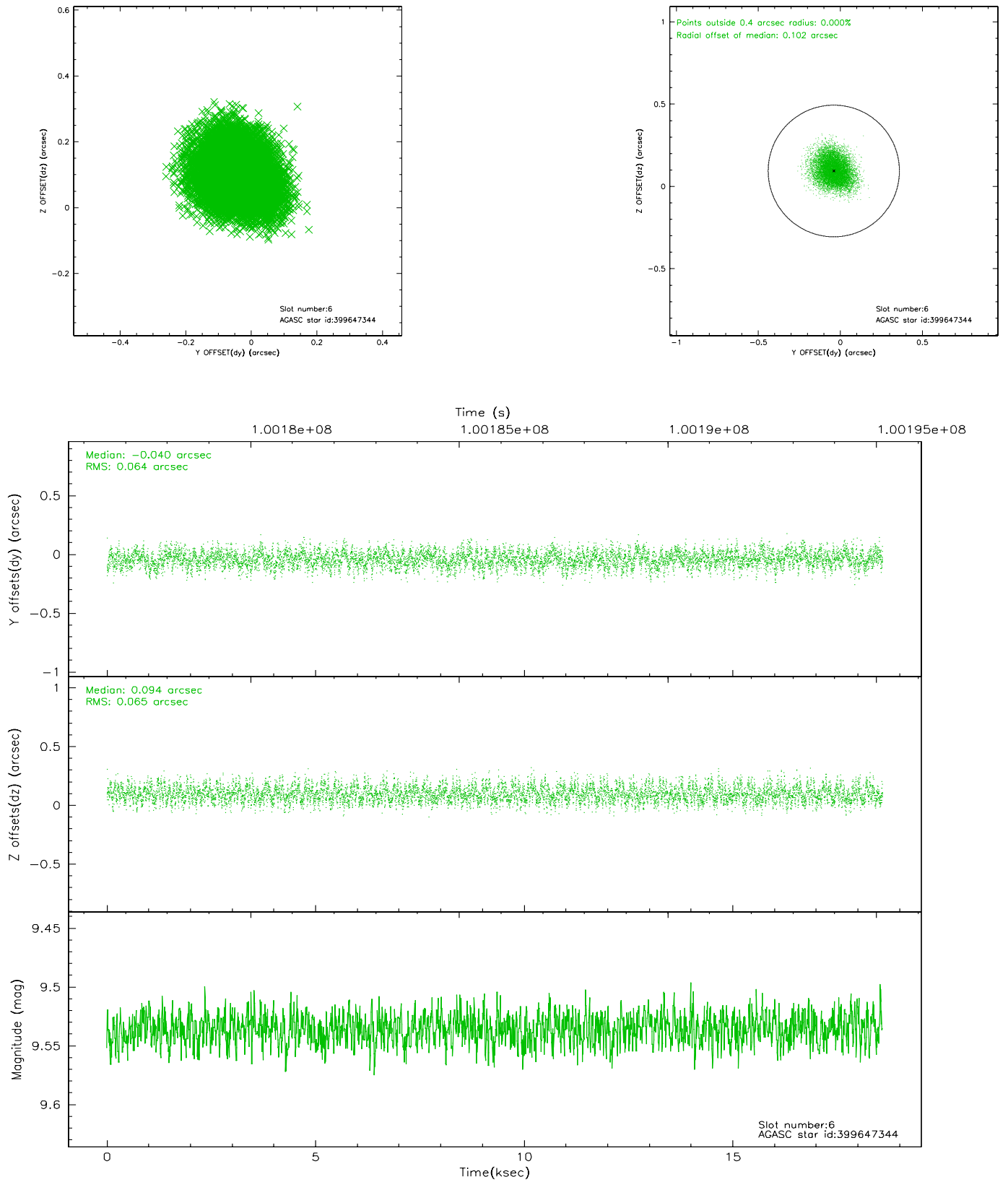
2.4.2 Slot 4



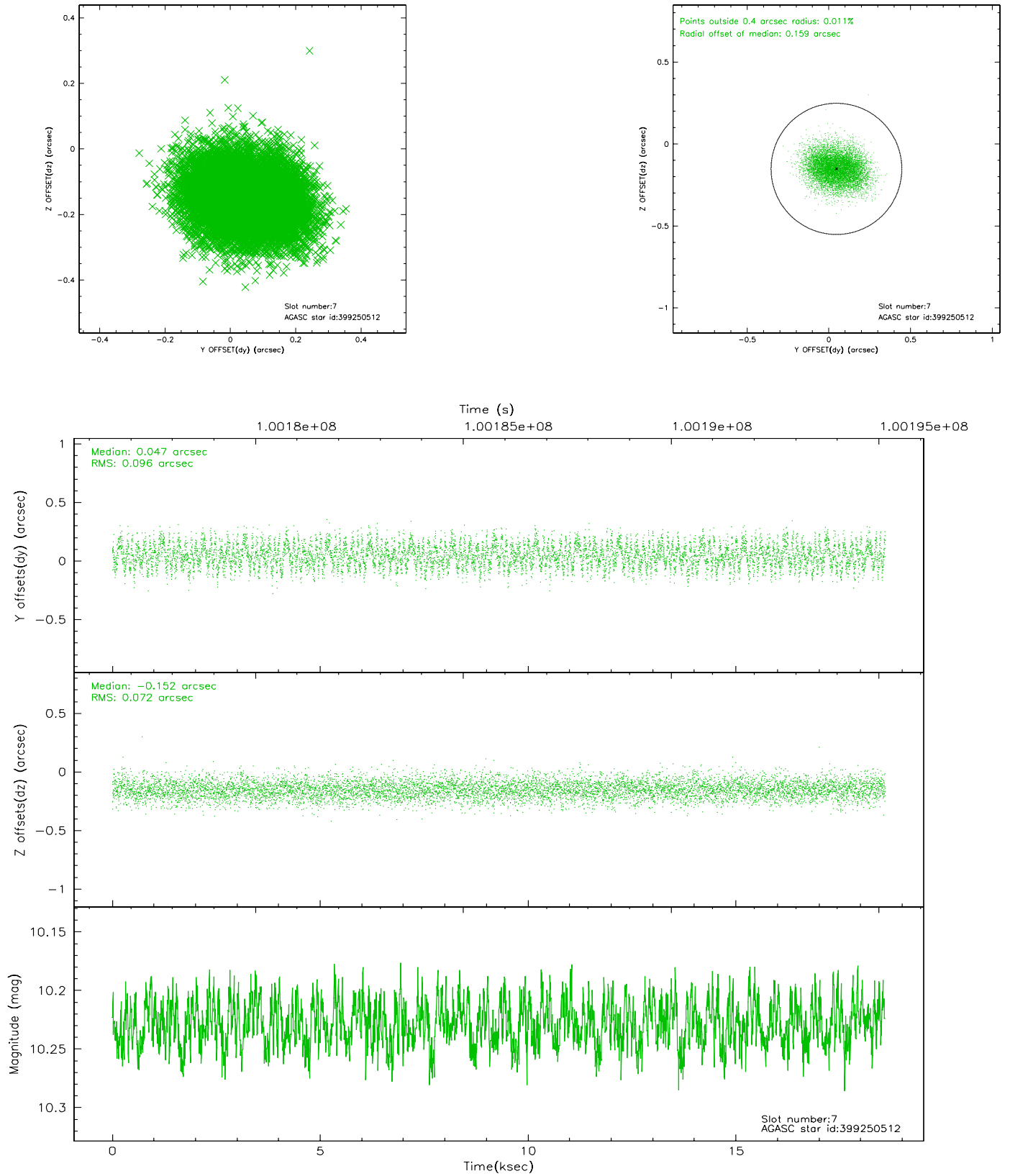
2.4.3 Slot 5



2.4.4 Slot 6

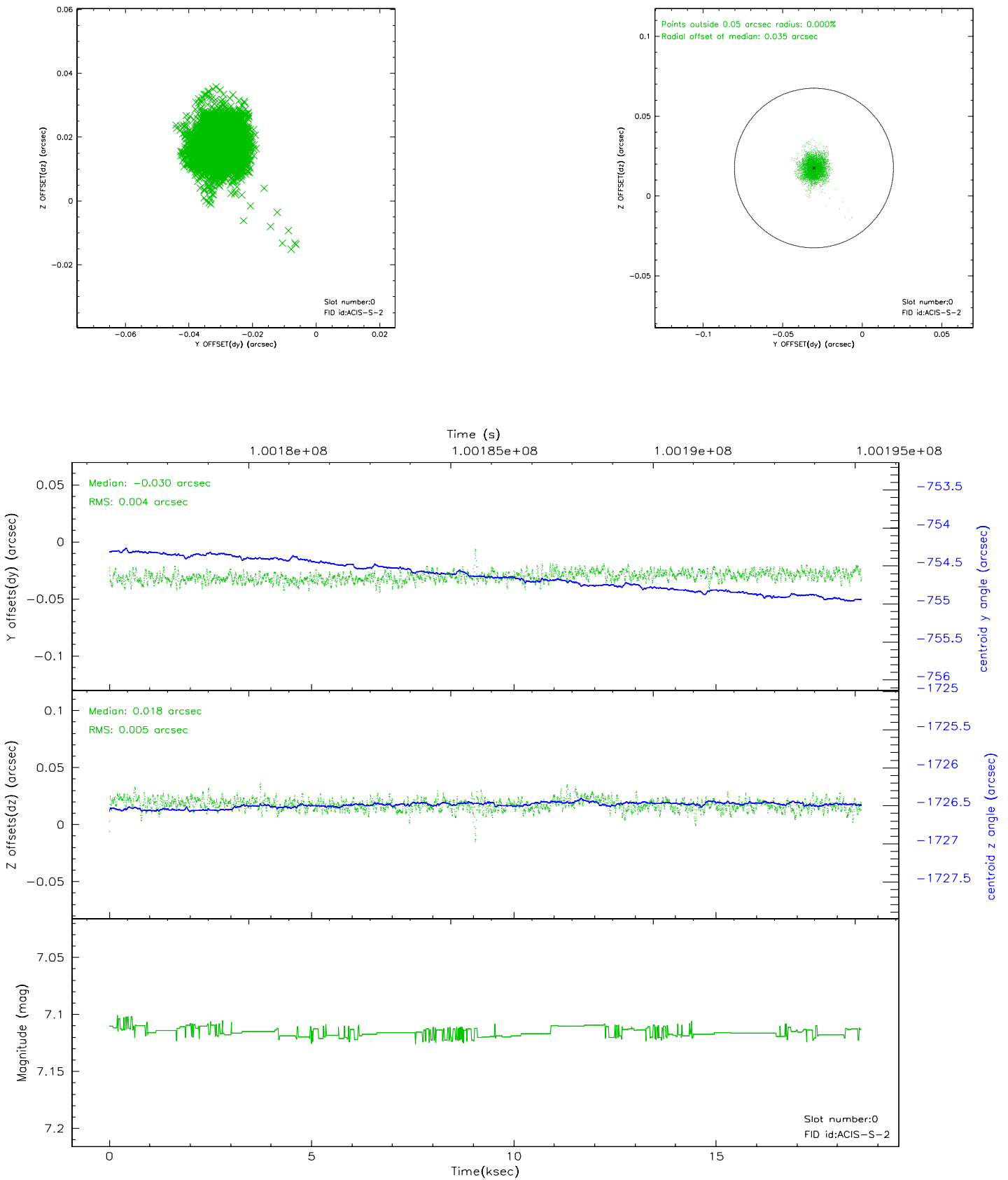


2.4.5 Slot 7

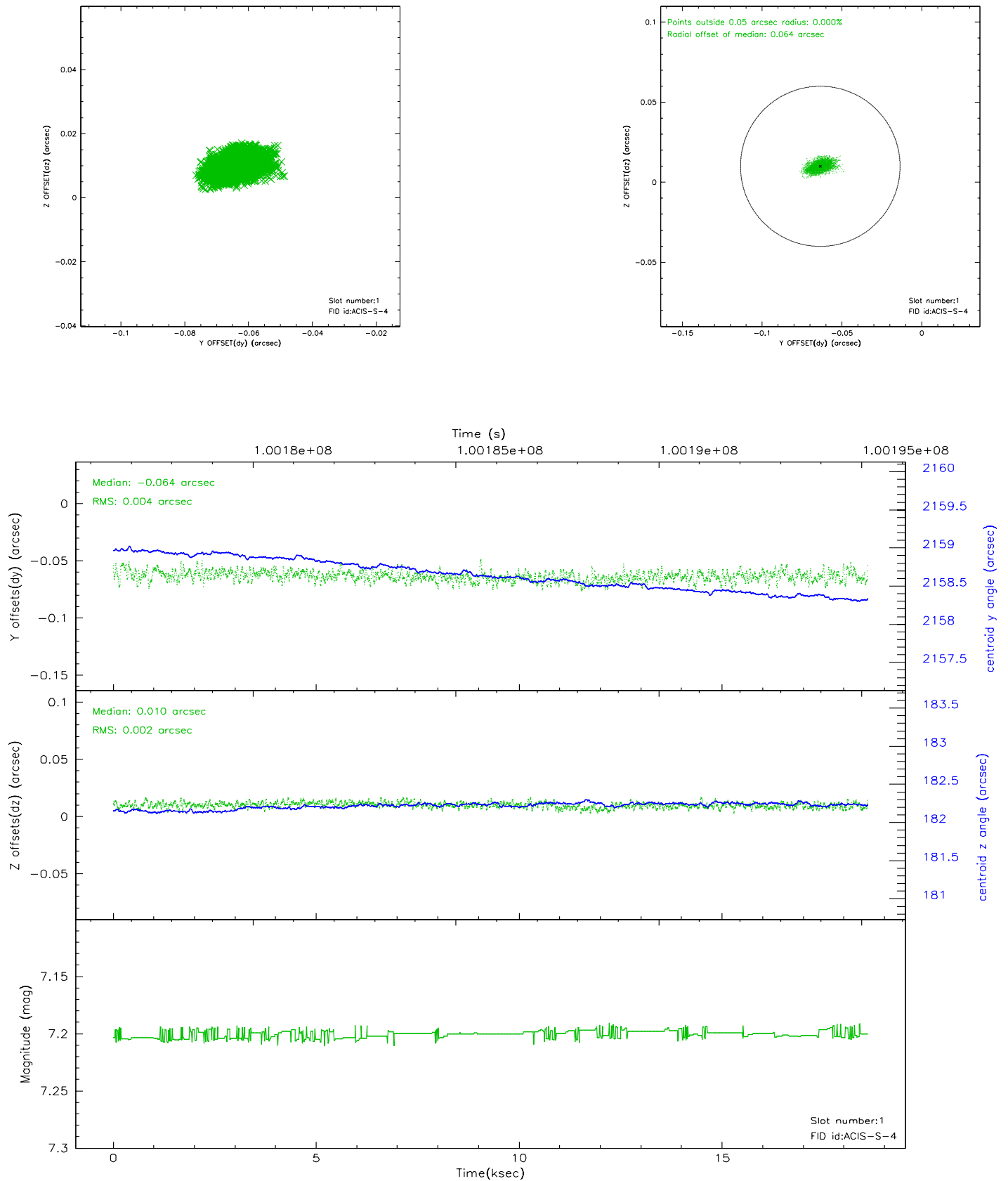


2.5 FID Slots

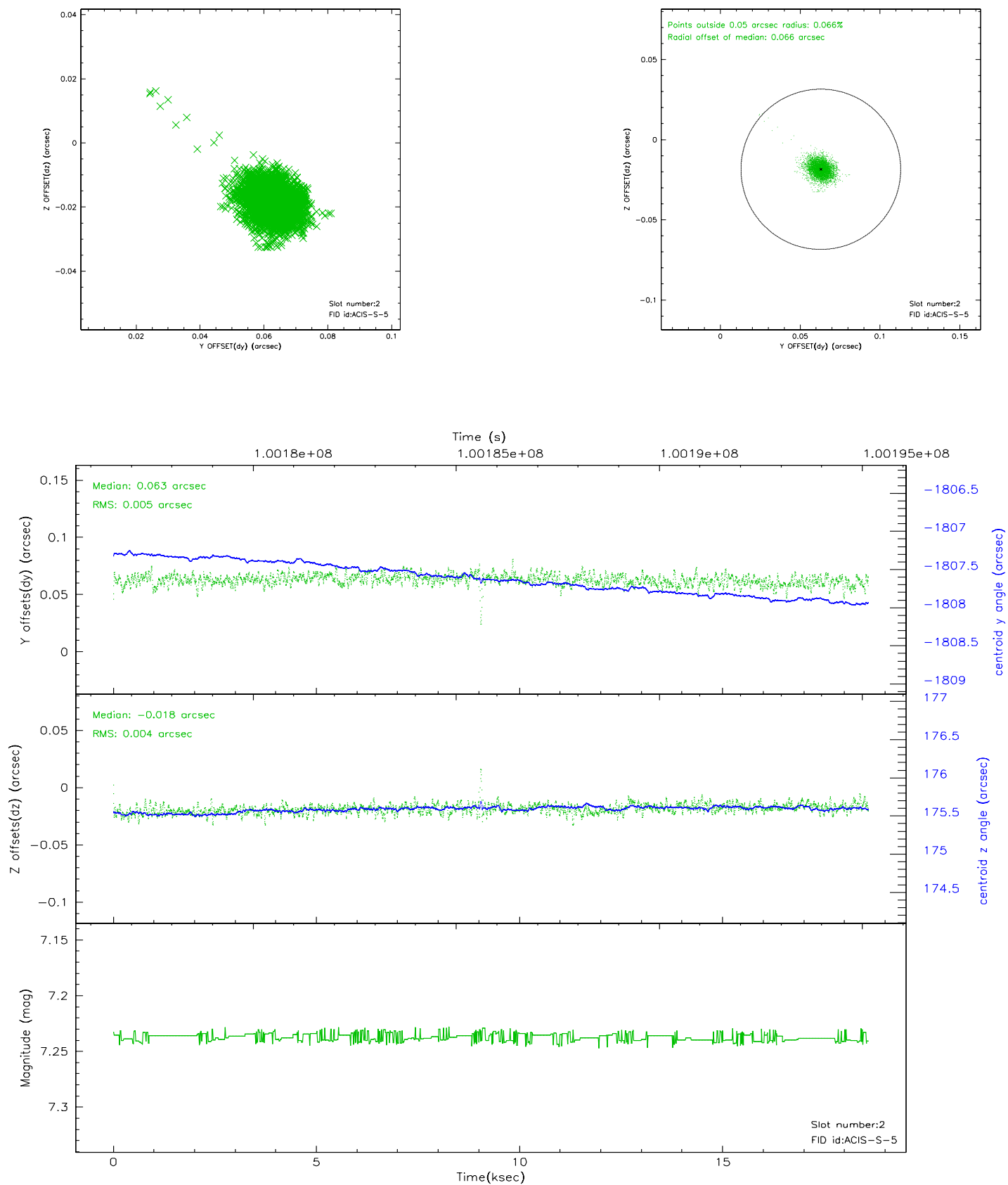
2.5.1 Slot 0



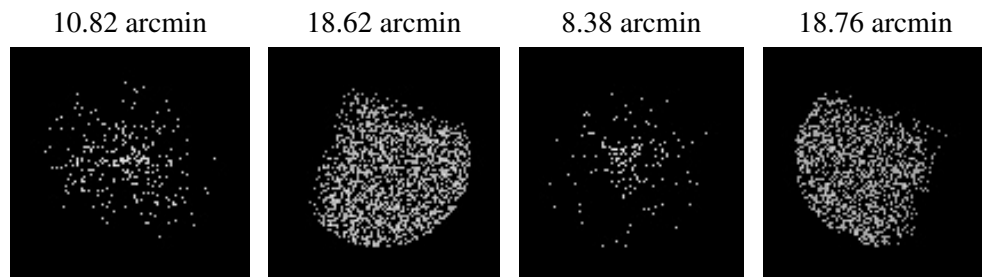
2.5.2 Slot 1



2.5.3 Slot 2



3 Point Sources



A Summary

A.1 Status

V&V Scientist	Jen Lauer
V&V Date (YYYY-MM-DD)	2006.11.08
V&V Edition	1
V&V Disposition and Status	OK
V&V Charge Time	17.907

A.2 Comments