

V&V Reference Report

L2 ASCDS Version : 7.6.10

Observation 1943 - L2 Version 001
Chandra X-Ray Center

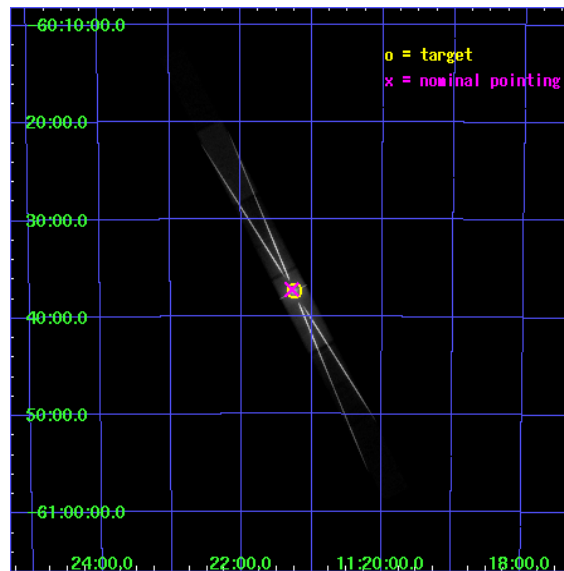
L2 Processing Date : Jun 22 2007

Contents

1	Front	2
2	OBI	3
2.1	OBI	3
2.1.1	Images	3
2.1.2	Bias	3
2.1.3	Parameters	4
2.1.4	Events	4
2.2	Compared Parameters	5
2.3	Aspect	6
2.4	Star Slots	9
2.4.1	Slot 3	9
2.4.2	Slot 4	10
2.4.3	Slot 5	11
2.4.4	Slot 6	12
2.4.5	Slot 7	13
2.5	FID Slots	14
2.5.1	Slot 0	14
2.5.2	Slot 1	15
2.5.3	Slot 2	16
3	Gratings	17
3.1	HEG Arm	17
3.2	MEG Arm	19
A	Summary	21
A.1	Status	21
A.2	Comments	21

1 Front

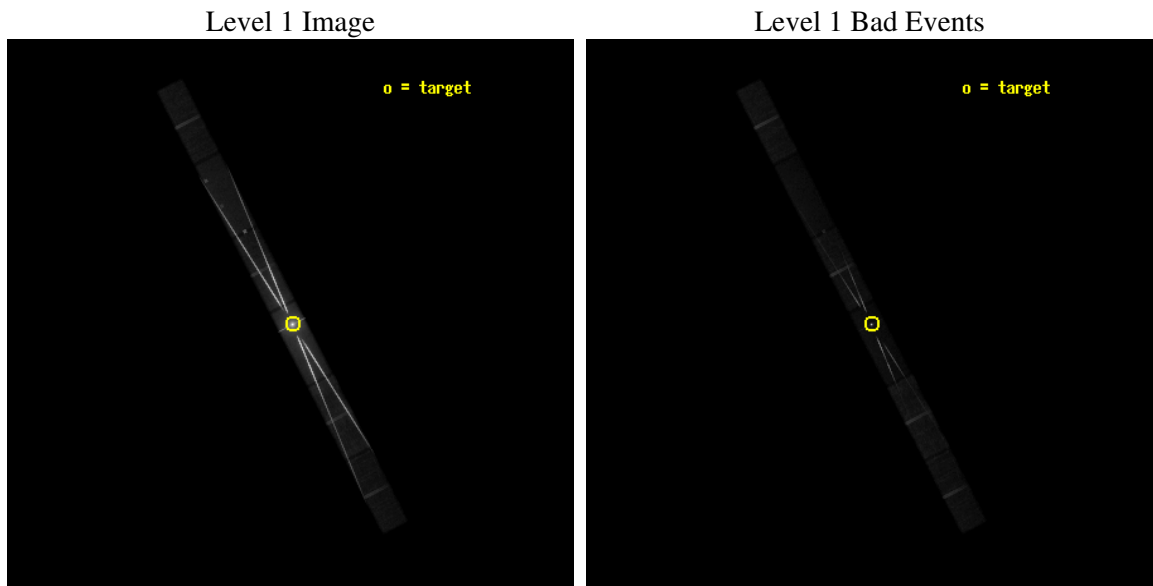
seq_num	400156
obs_id	1943
title	THE WIND AND ACCRETION DISK IN CEN X-3/V779 CEN
observer	Dr. Patrick Wojdowski
object	CEN X-3
dtcycle	0
cycle	P
ra_targ	170.313333
dec_targ	-60.623333
ra_nom	170.32044778642
dec_nom	-60.620421667975
roll_nom	62.562583601149
revision	2
ontime	46776.599892765
livetime	45345.090273665
ontime4	46776.599892765
ontime5	46776.599892765
ontime6	46776.599892765
ontime7	46776.599892765
ontime8	46776.599892765
ontime9	46776.599892765
l2events	3417706



2 OBI

2.1 OBI

2.1.1 Images

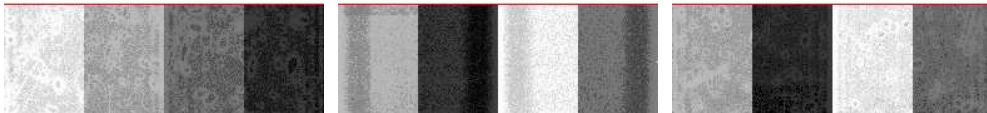


2.1.2 Bias

Chip 4

Chip 5

Chip 6



Chip 7

Chip 8

Chip 9



2.1.3 Parameters

obi_num	0
ascdsver	7.6.10
caldsver	3.4.0
date	2007-06-22T01:23:29
revision	2

sched_exp_time	46618.800000
ontime	46776.599892765
ontime4	46776.599892765
ontime5	46776.599892765
ontime6	46776.599892765
ontime7	46776.599892765
ontime8	46776.599892765
ontime9	46776.599892765
l1events	4267927

2.1.4 Events

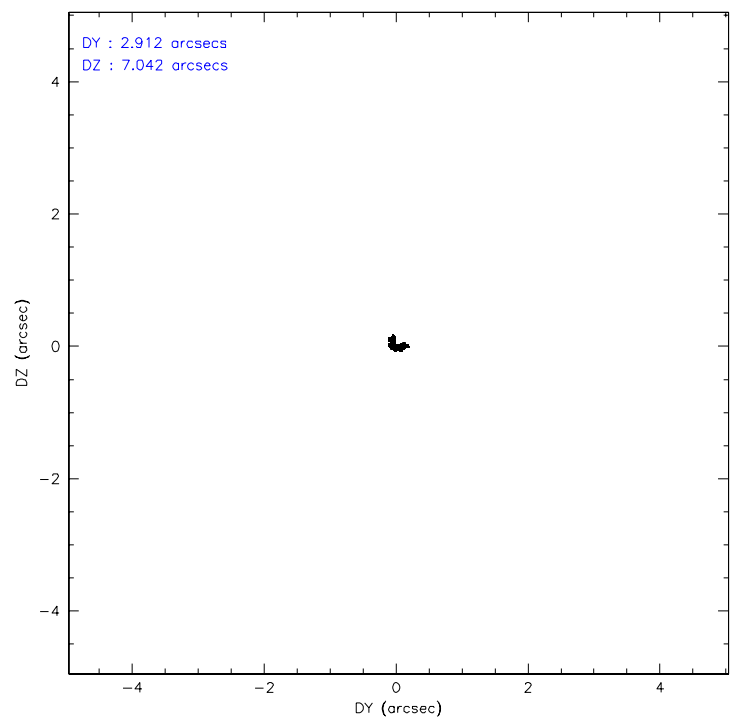
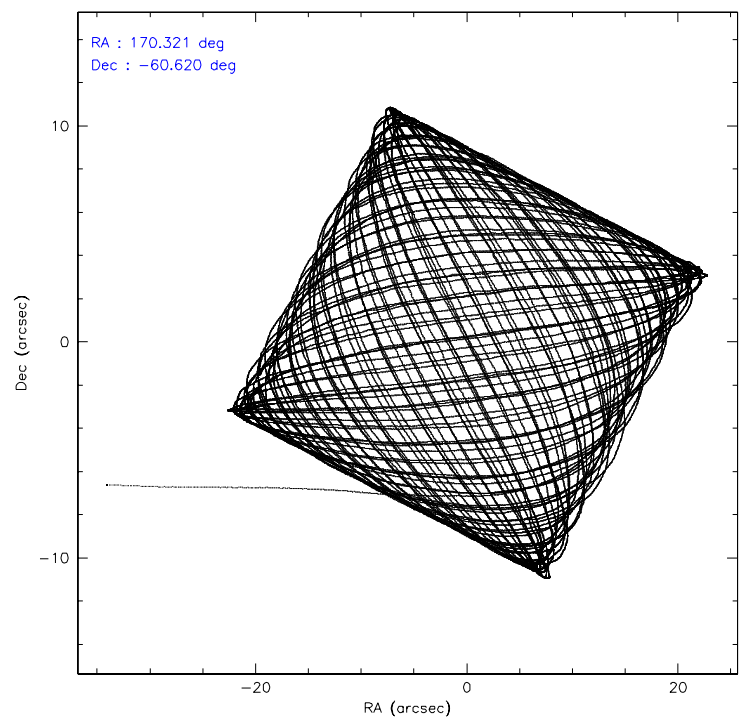
	ccd 4	ccd 5	ccd 6	ccd 7	ccd 8	ccd 9
level 1 events	126382	267758	1346417	1913953	487864	125553
rejected events	111177	75748	139146	162006	121959	91699
rejected %	87%	28%	10%	8%	24%	73%

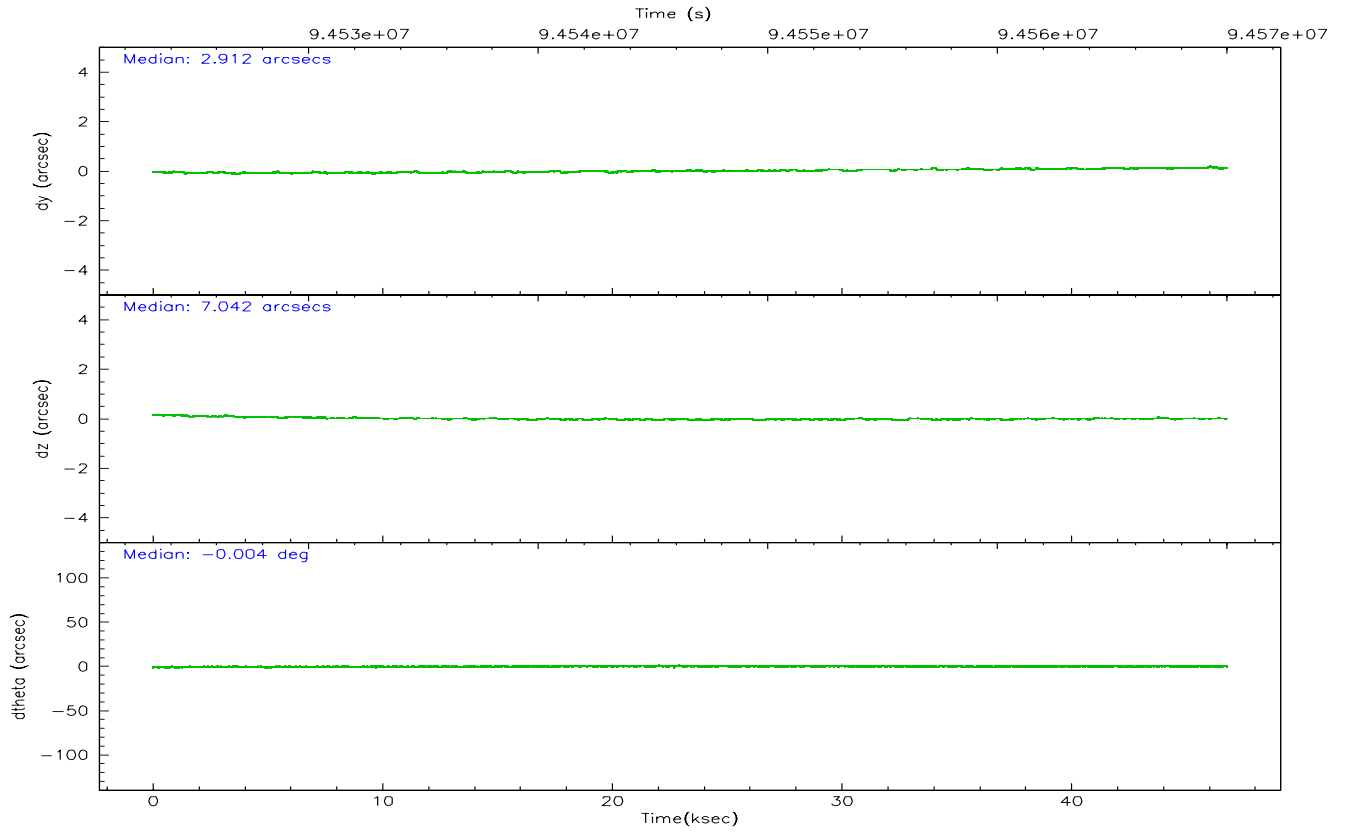
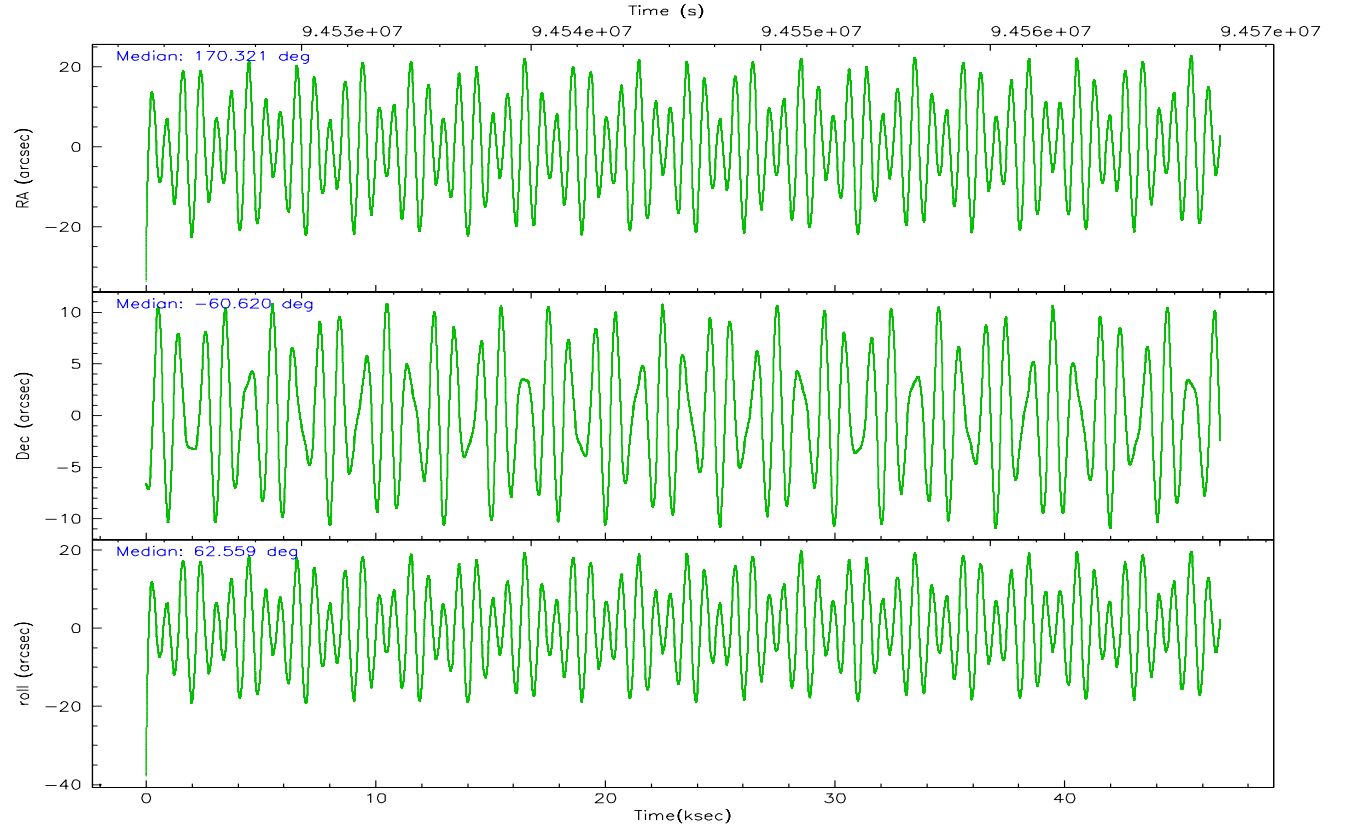
	ccd 4	ccd 5	ccd 6	ccd 7	ccd 8	ccd 9
grade 0 events	6725	55468	856012	345005	273437	21060
	5%	20%	63%	18%	56%	16%
grade 1 events	37	909	12506	8128	1490	77
	0%	0%	0%	0%	0%	0%
grade 2 events	3035	51775	161380	416433	43375	4998
	2%	19%	11%	21%	8%	3%
grade 3 events	1734	16609	57984	187695	16194	2595
	1%	6%	4%	9%	3%	2%
grade 4 events	1634	16366	57424	186580	15815	2507
	1%	6%	4%	9%	3%	1%
grade 5 events	3346	12834	15012	45124	5869	3794
	2%	4%	1%	2%	1%	3%
grade 6 events	2214	52814	78648	622418	18566	2938
	1%	19%	5%	32%	3%	2%
grade 7 events	107657	60983	107451	102570	113118	87584
	85%	22%	7%	5%	23%	69%

2.2 Compared Parameters

Parameter	Planned	Actual	Parameter	Planned	Actual
Instrument	ACIS	ACIS	Obspar format version number	6	6
Detector	ACIS-456789	ACIS-456789	Obspar file type	PREDICTED	ACTUAL
Grating	HETG	HETG	Obspar update status	NONE	UPDATED
Data mode	FAINT	FAINT	Number of optional ACIS chips dropped	0	0
Observation mode	POINTING	POINTING	On-chip summing requested	N	N
Pointing RA	170.323388	170.3204477864242	Subarray requested	CUSTOM	CUSTOM
Pointing Dec	-60.647721	-60.62042166797467	Subarray start row	1	1
Pointing Roll	62.408522	62.56258360114875	Subarray row count	350	350
SIM focus pos (mm)	-0.684267	-0.6828225247311905	Alternating exposures requested	N	N
SIM defocus (mm)	0	0.001444936568705701	Primary exposure time	0.000000	1.3
SIM translation stage pos (mm)	-182.042523	-182.036427832944			
SIM translation stage offset (mm)	-8.09	-8.096094750063799			
Phase constraints	Y	Y			
Phase period	2.087029	2.087029			
Phase epoch	51930.150440	51930.150440			
Phase start	0.360000	0.360000			
Phase end	0.640000	0.640000			
Phase start error	0.070000	0.070000			
Phase end error	0.070000	0.070000			
Observation start time	94523380.184000	94522410.33218101			
Observation start date	2000-12-30T00:28:36	2000-12-30T00:13:30			
Observation end time	94569999.184000	94570313.709016			
Observation end date	2000-12-30T13:25:35	2000-12-30T13:31:53			
Read mode	TIMED	TIMED			

2.3 Aspect



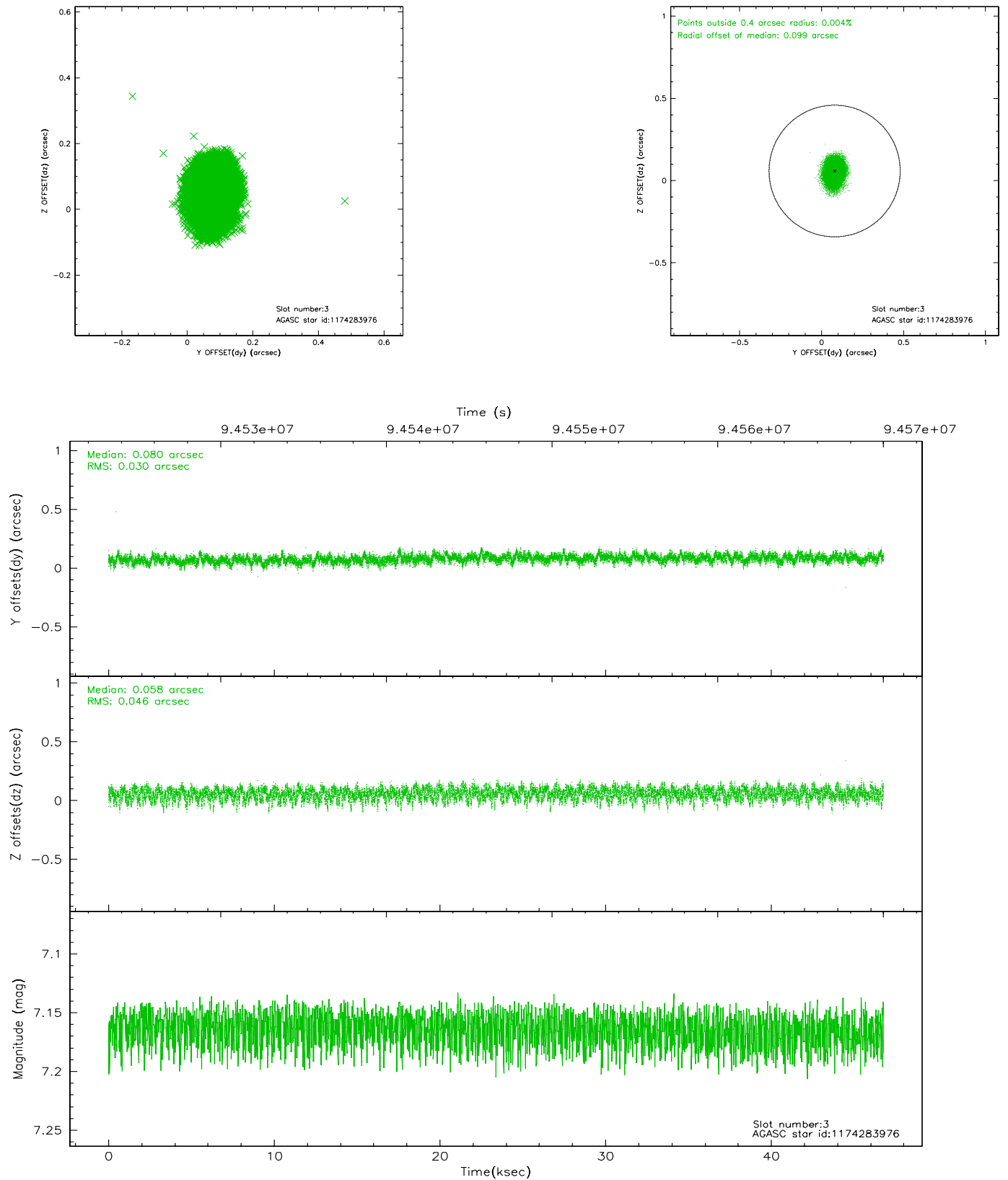


Slot Statistics

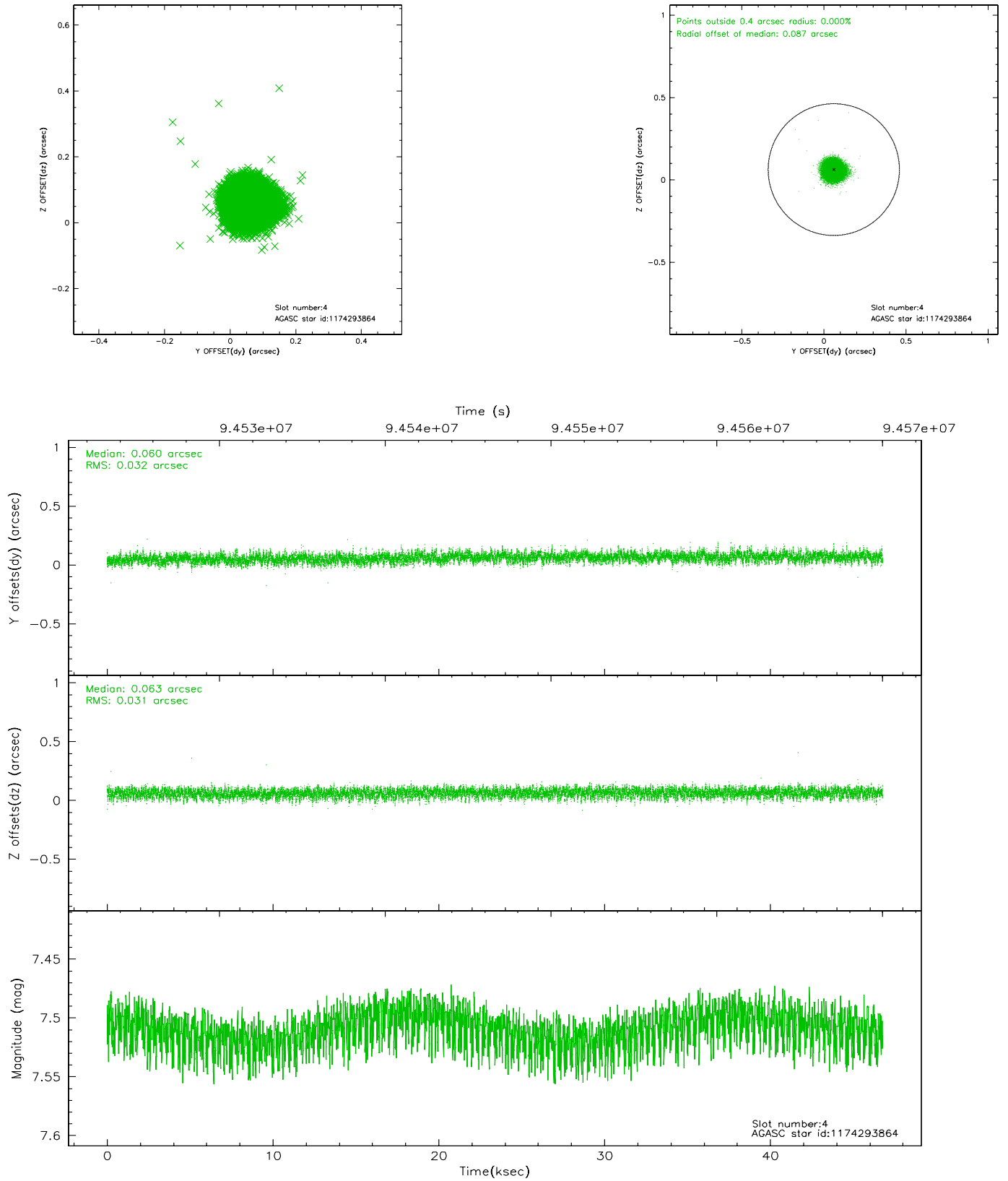
slot	status	id	mag	n_pts	med_dy	med_dz	dr1	dr2	ra	dec	mean_y	mean_z
0	FID	ACIS-S-2	7.09	11410	-0.012	-0.050	0.012	0.021	0.000000	0.000000	-755.00	-1895.05
1	FID	ACIS-S-4	7.18	11410	-0.038	0.019	0.021	0.033	0.000000	0.000000	2158.27	13.48
2	FID	ACIS-S-5	7.23	11410	0.016	0.039	0.012	0.021	0.000000	0.000000	-1807.82	7.16
3	GUIDE	1174283976	7.16	22818	0.080	0.058	0.058	0.096	170.390254	-61.226219	-1792.53	-1066.64
4	GUIDE	1174293864	7.51	22818	0.060	0.063	0.048	0.075	170.089015	-61.097044	-1623.66	-387.51
5	GUIDE	1174285376	7.71	22815	-0.114	-0.135	0.061	0.095	169.630551	-60.244001	708.18	1767.80
6	GUIDE	1174291288	8.38	22815	-0.011	0.089	0.050	0.084	171.098092	-60.555450	921.80	-1064.06
7	GUIDE	1174294224	8.27	22815	-0.017	-0.067	0.054	0.086	170.238614	-60.161504	1480.35	945.90

2.4 Star Slots

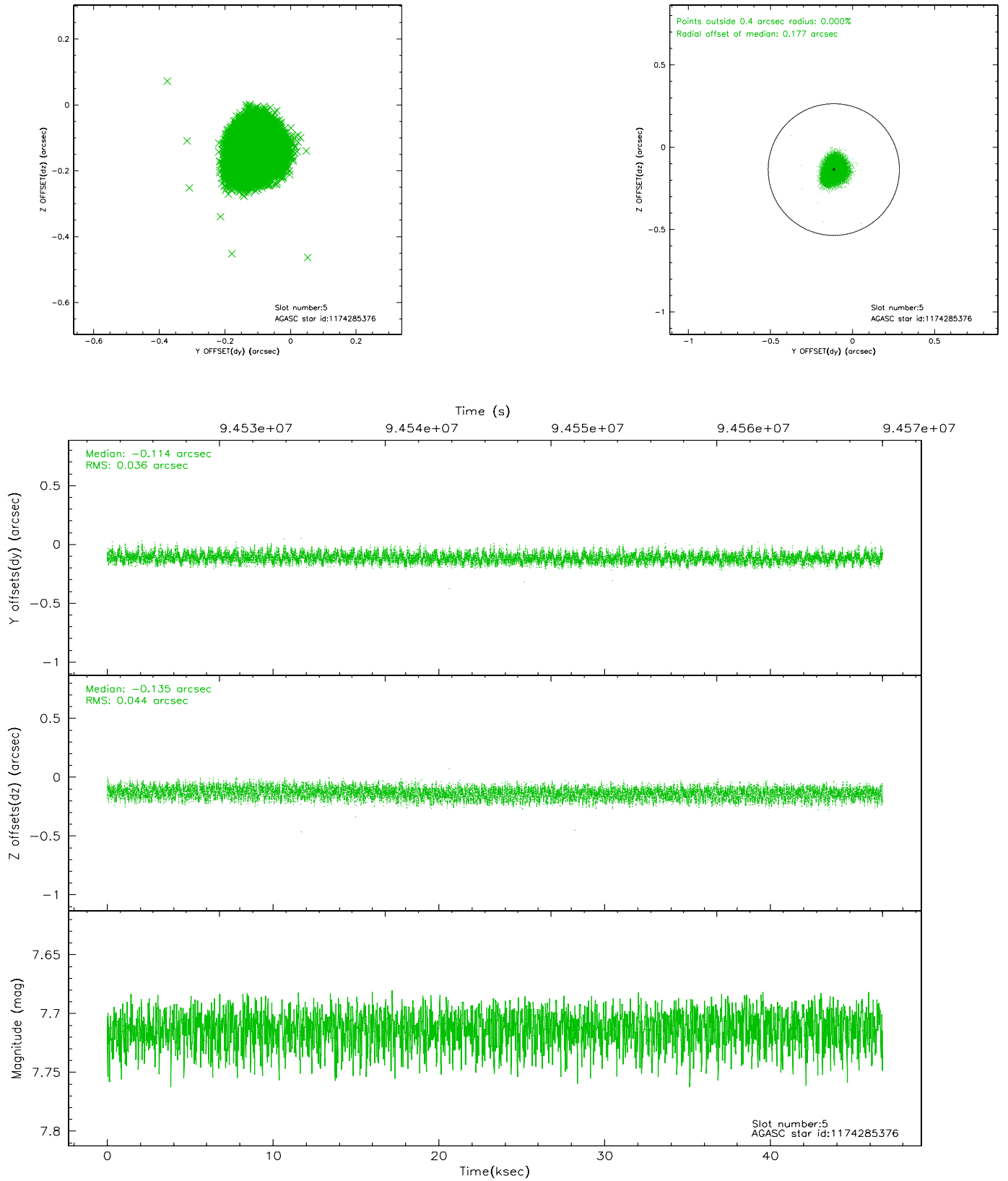
2.4.1 Slot 3



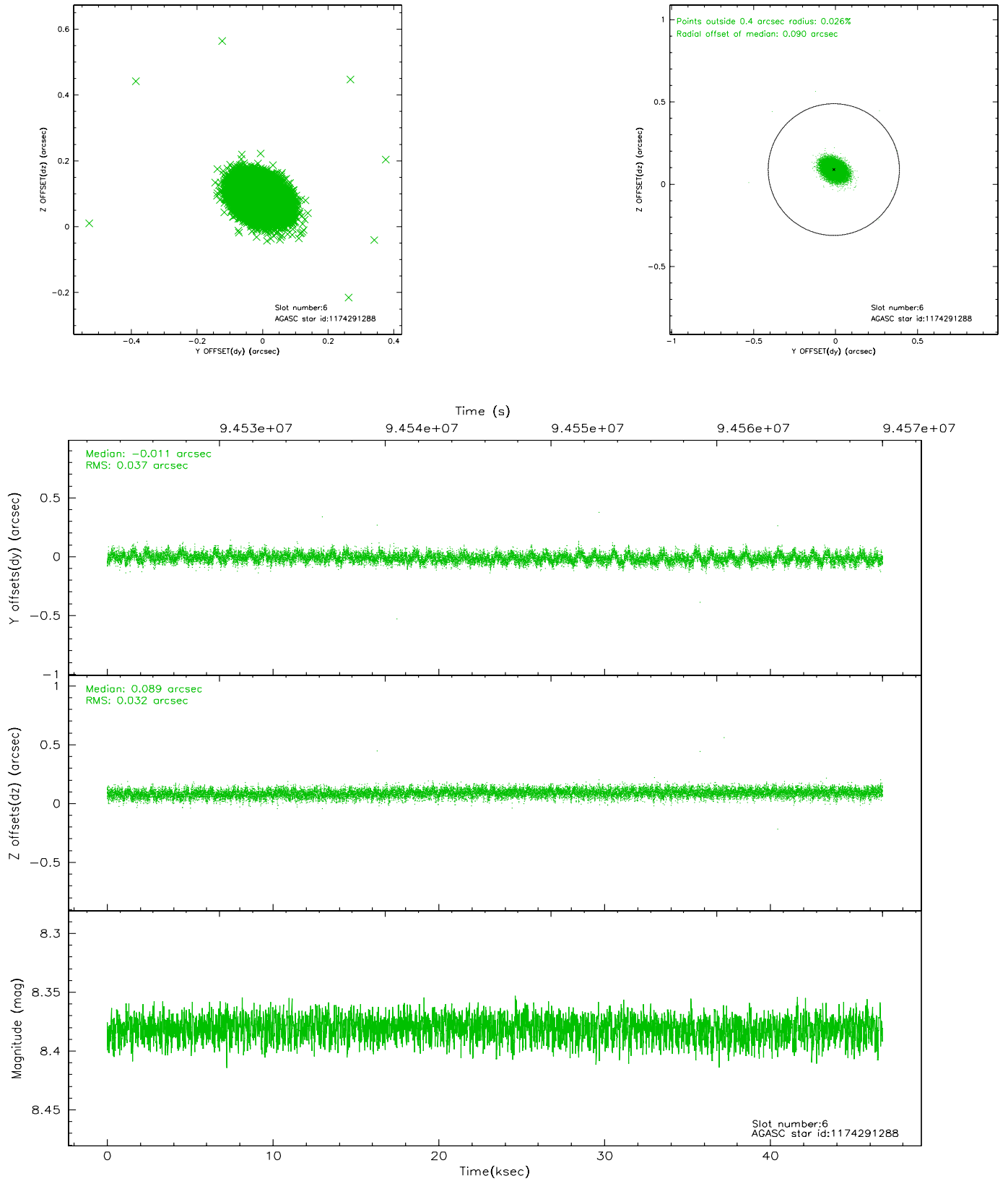
2.4.2 Slot 4



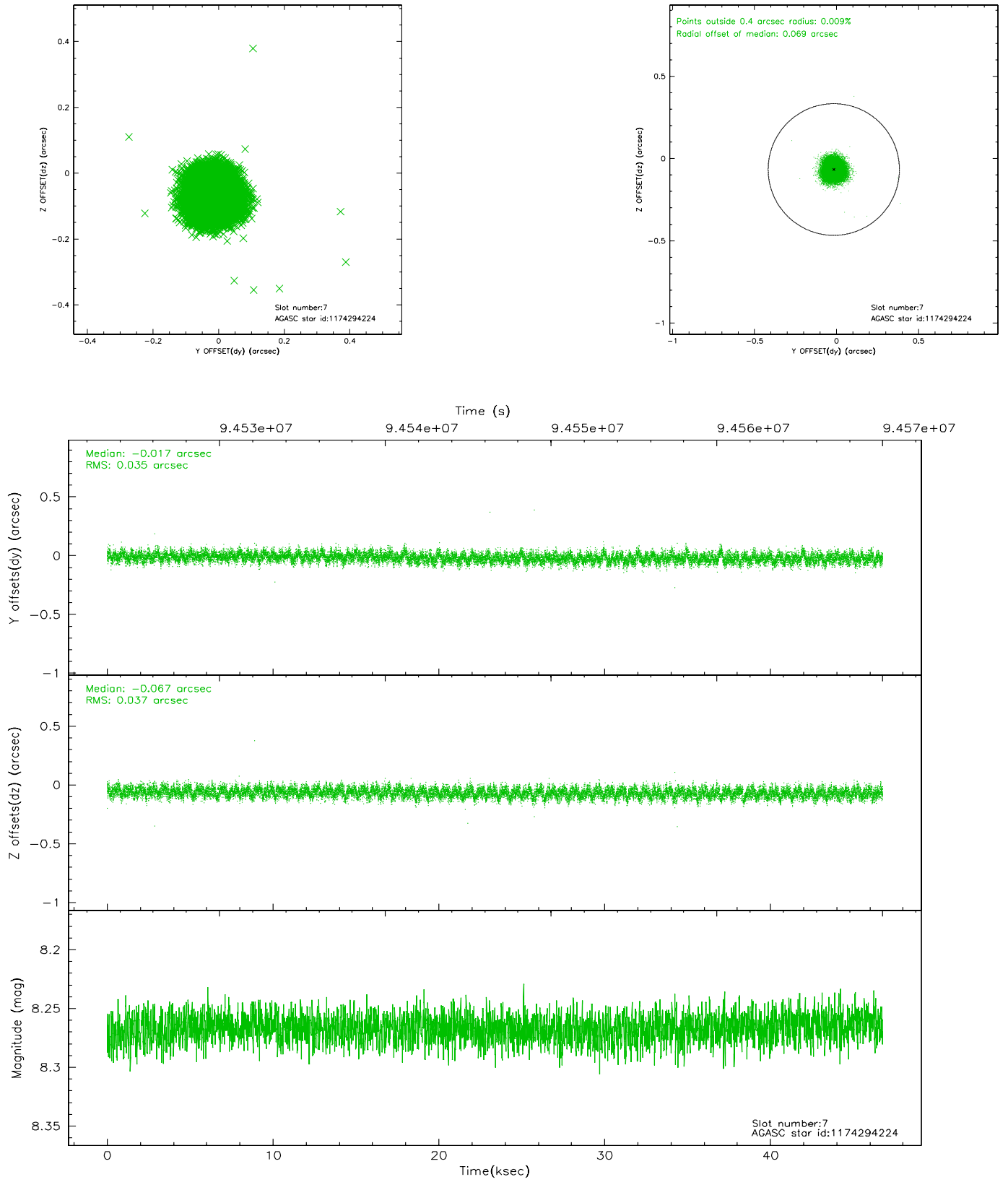
2.4.3 Slot 5



2.4.4 Slot 6

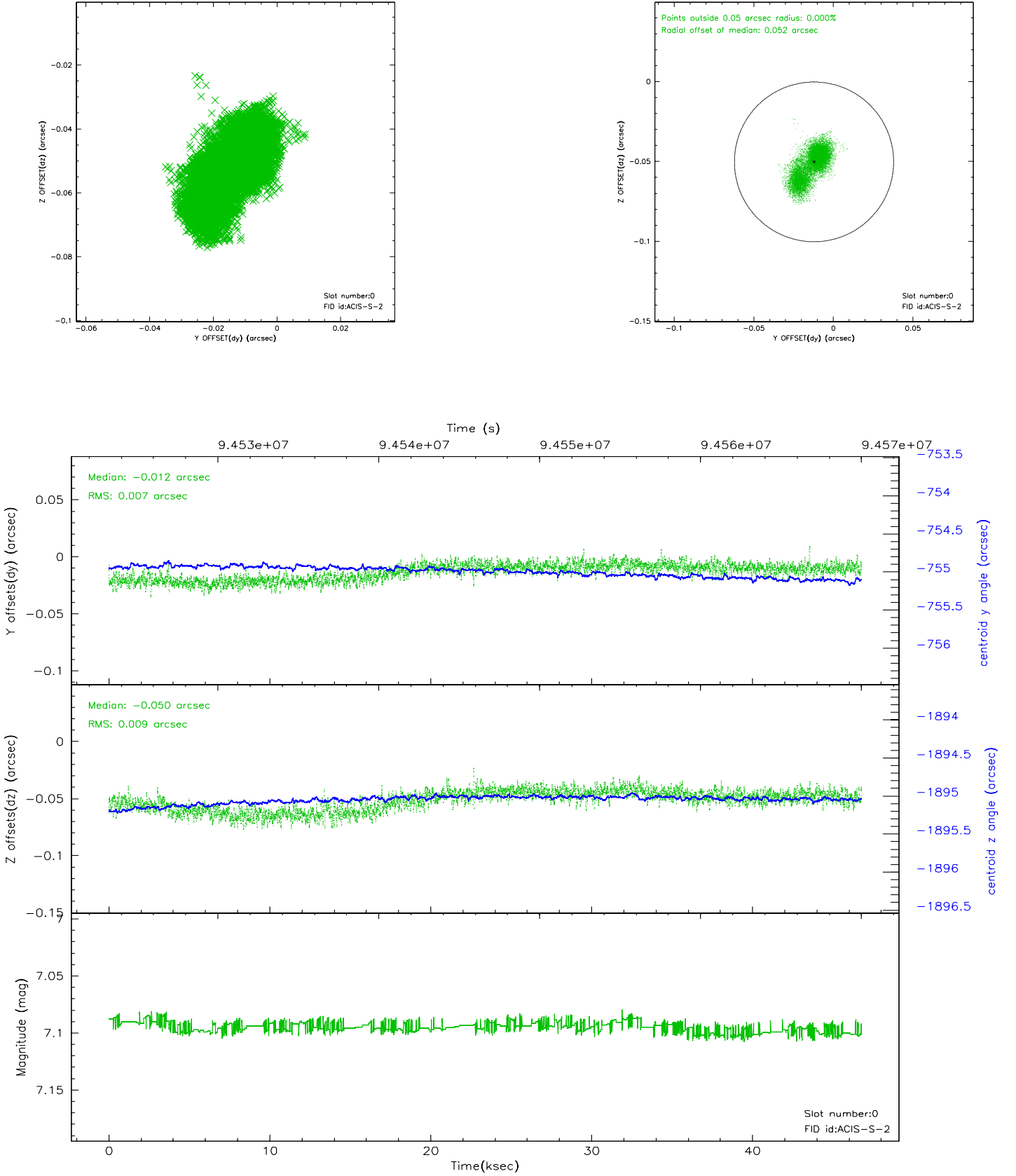


2.4.5 Slot 7

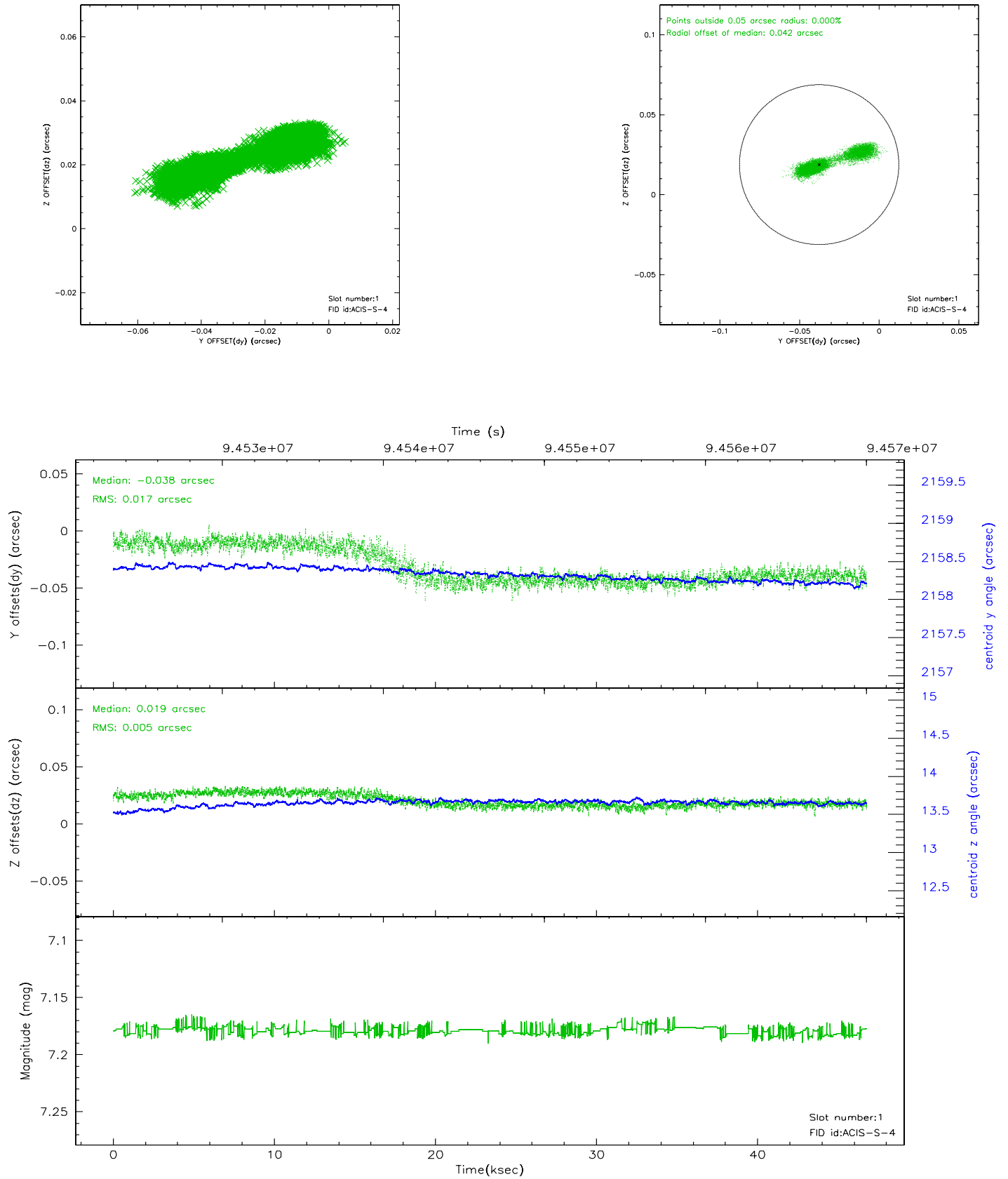


2.5 FID Slots

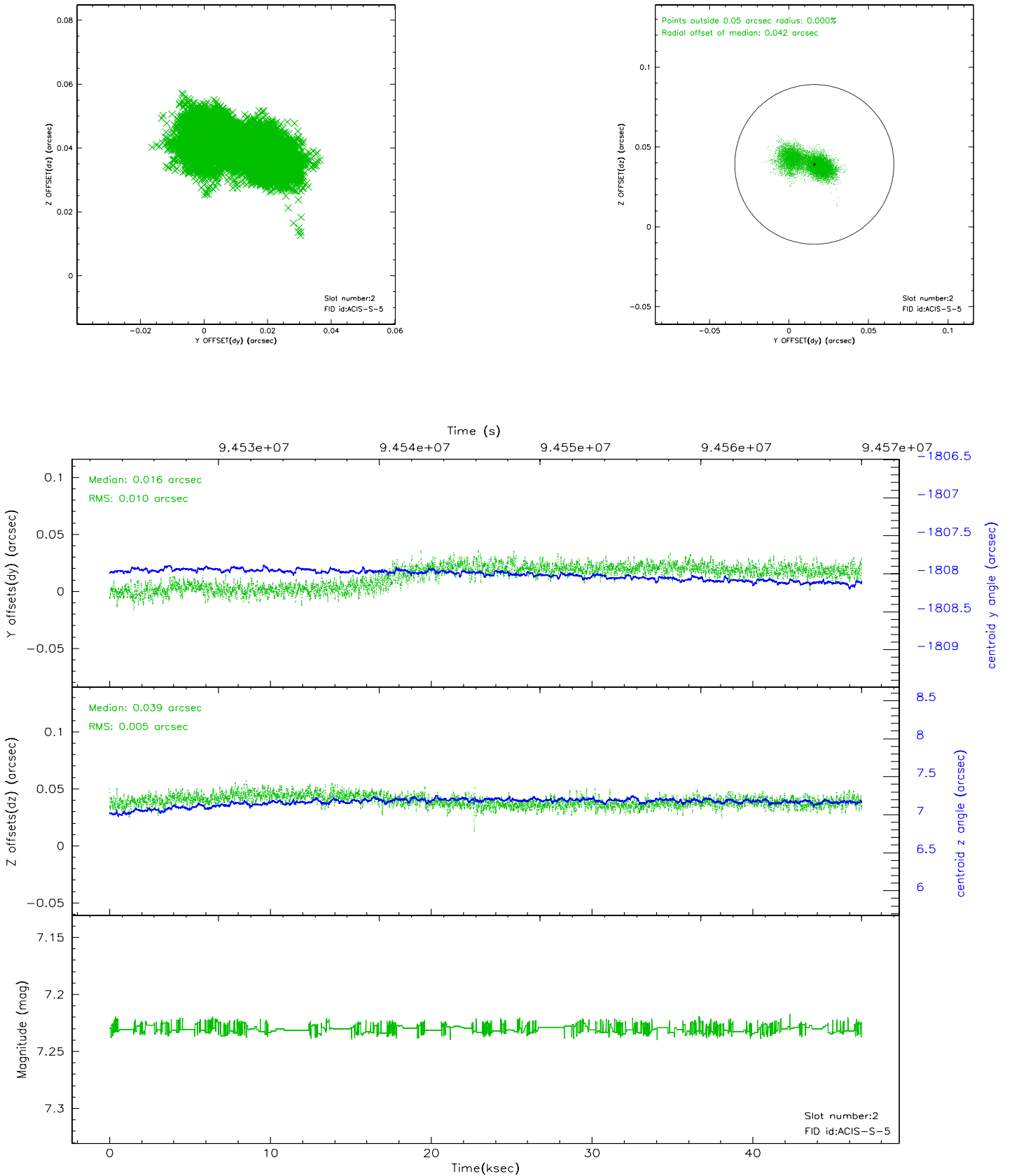
2.5.1 Slot 0



2.5.2 Slot 1



2.5.3 Slot 2

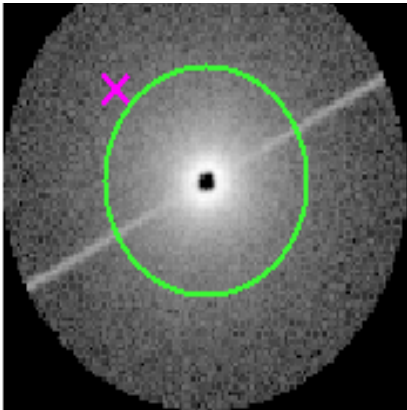


3 Gratings

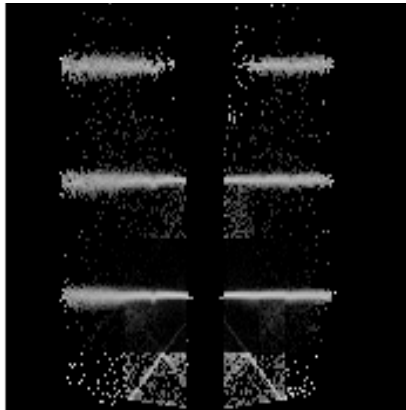
3.1 HEG Arm



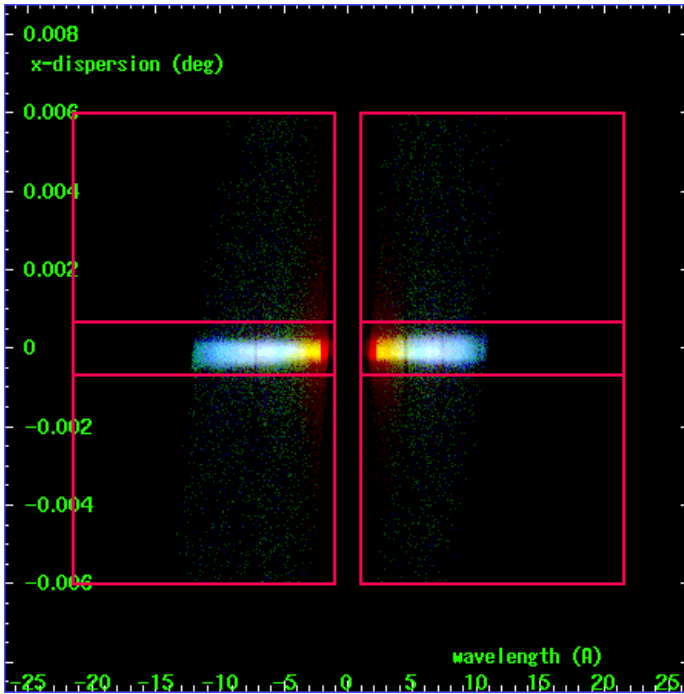
HEG Order Sort 123



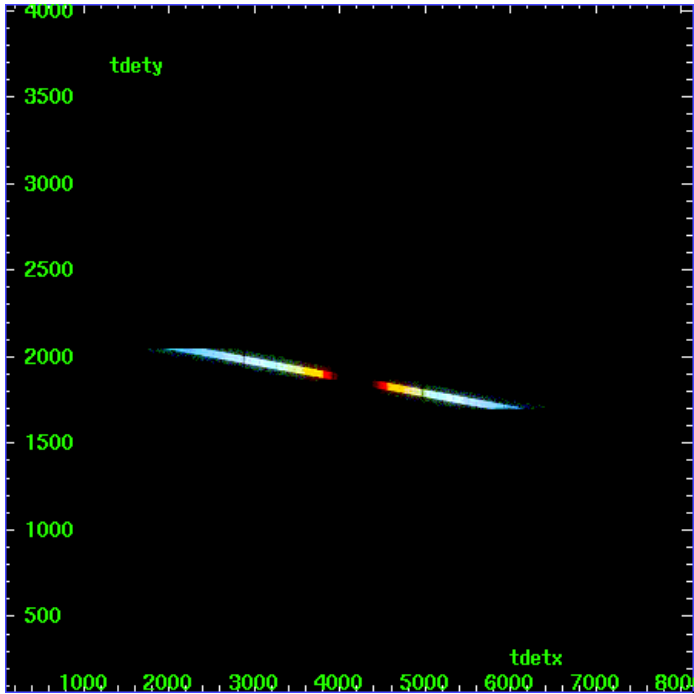
HEG Zero Order



HEG Order Sort ALL

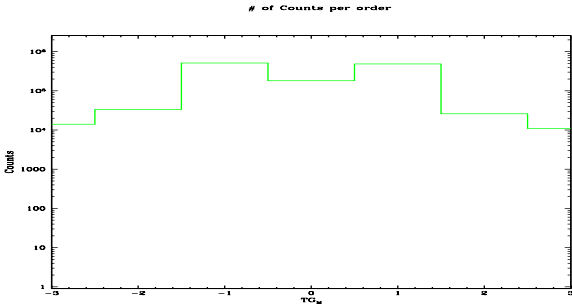


Spot Image HEG

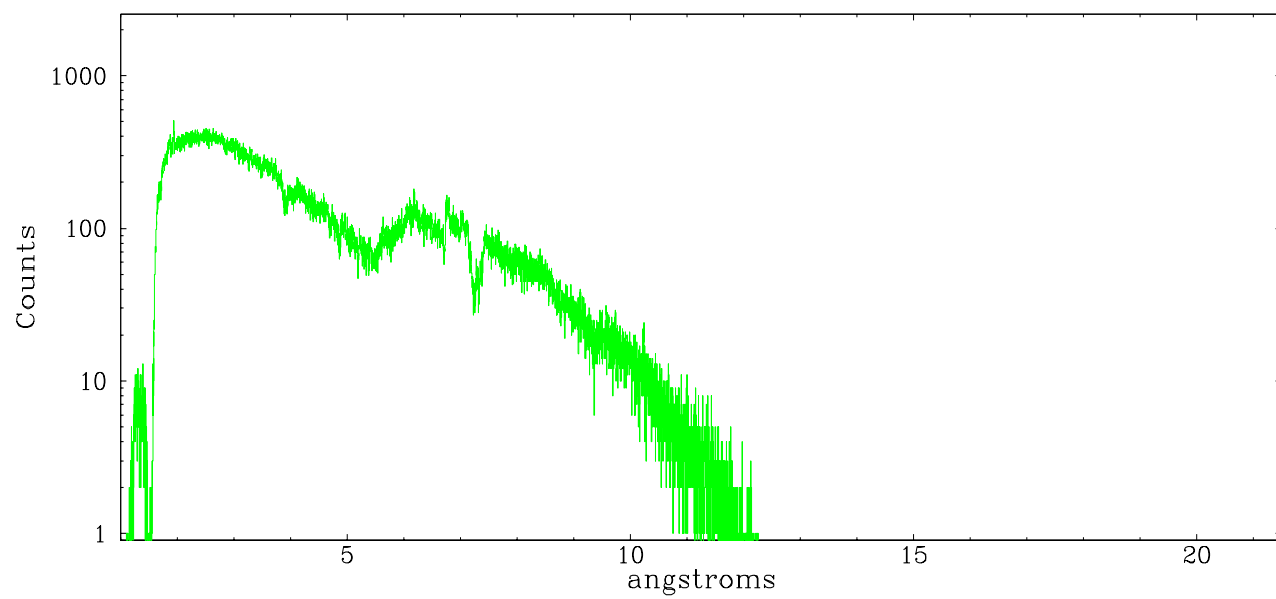


Full Detector HEG

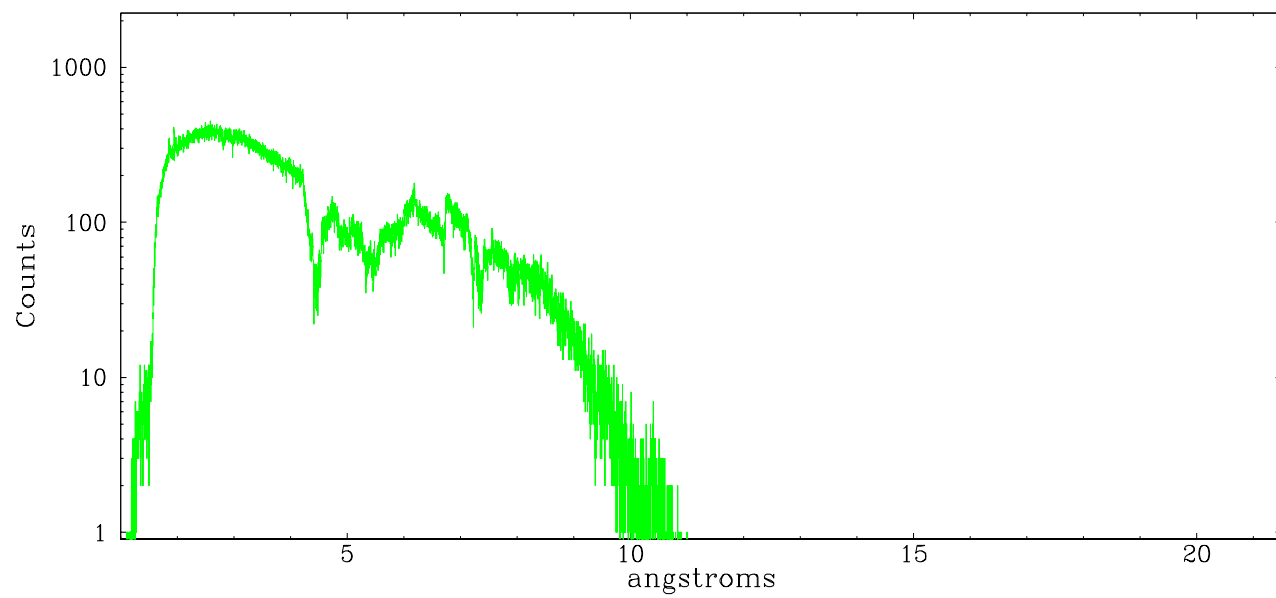
	order -3	order -2	order -1	order 0	order 1	order 2	order 3
Events	14122	33419	511369	180120	482995	26055	10982



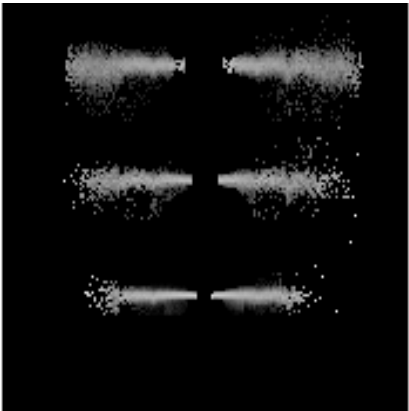
heg order -1



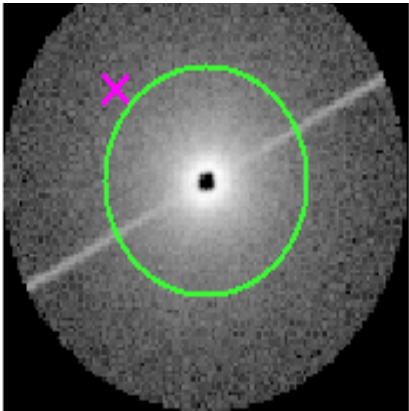
heg order +1



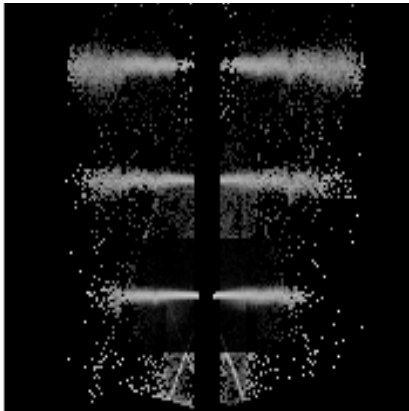
3.2 MEG Arm



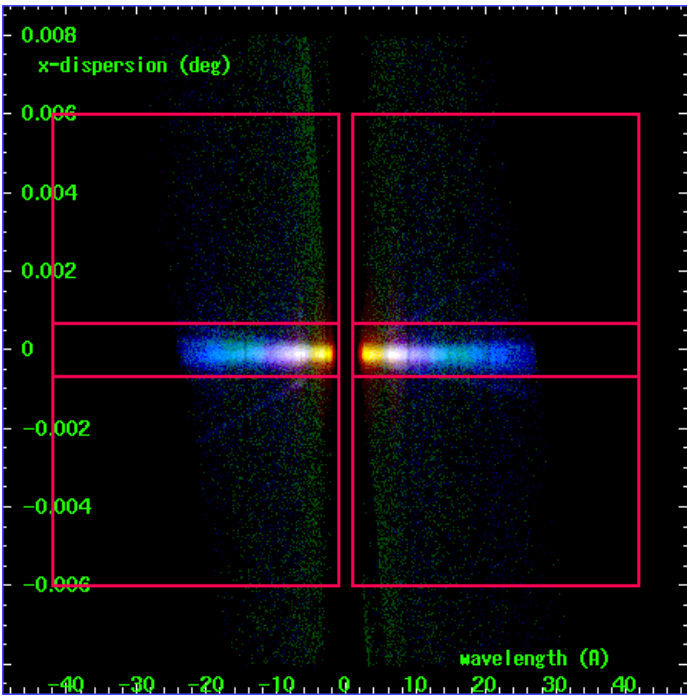
MEG Order Sort 123



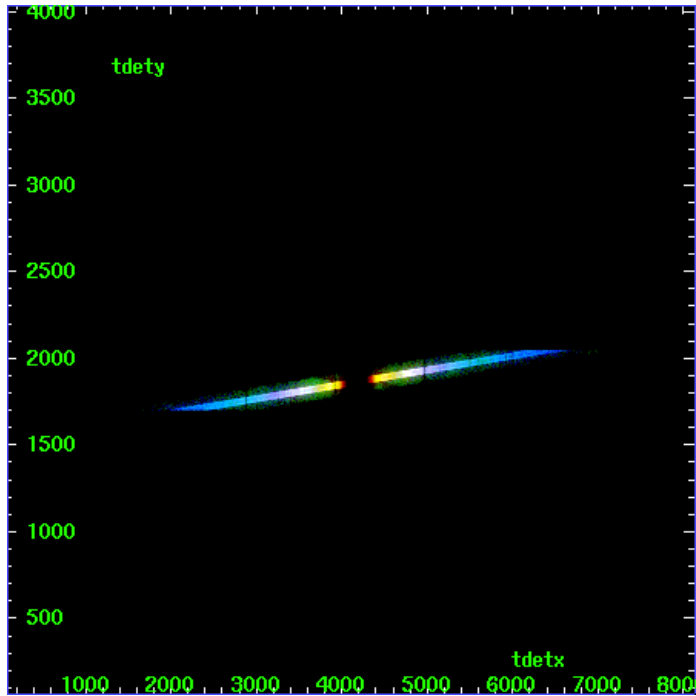
MEG Zero Order



MEG Order Sort ALL

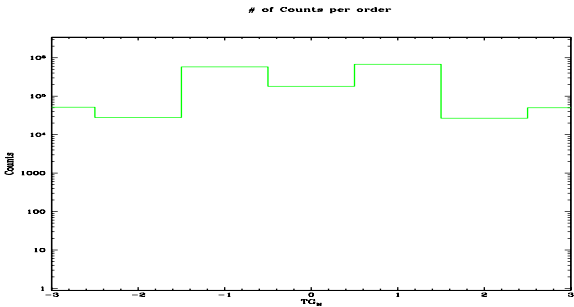


Spot Image MEG

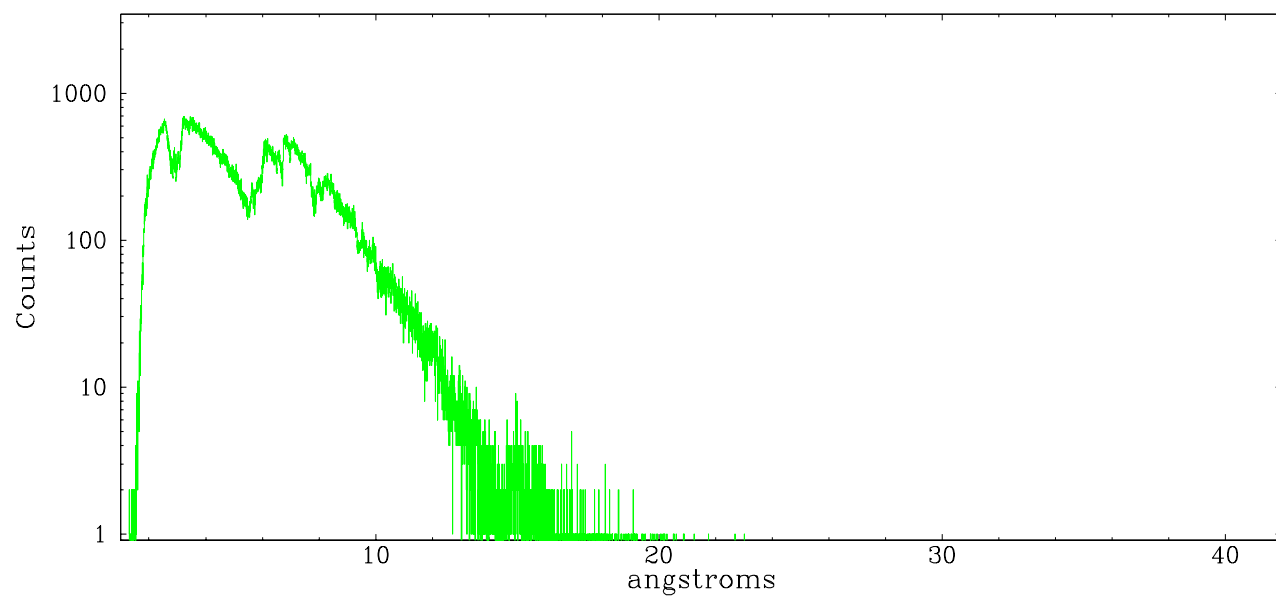


Full Detector MEG

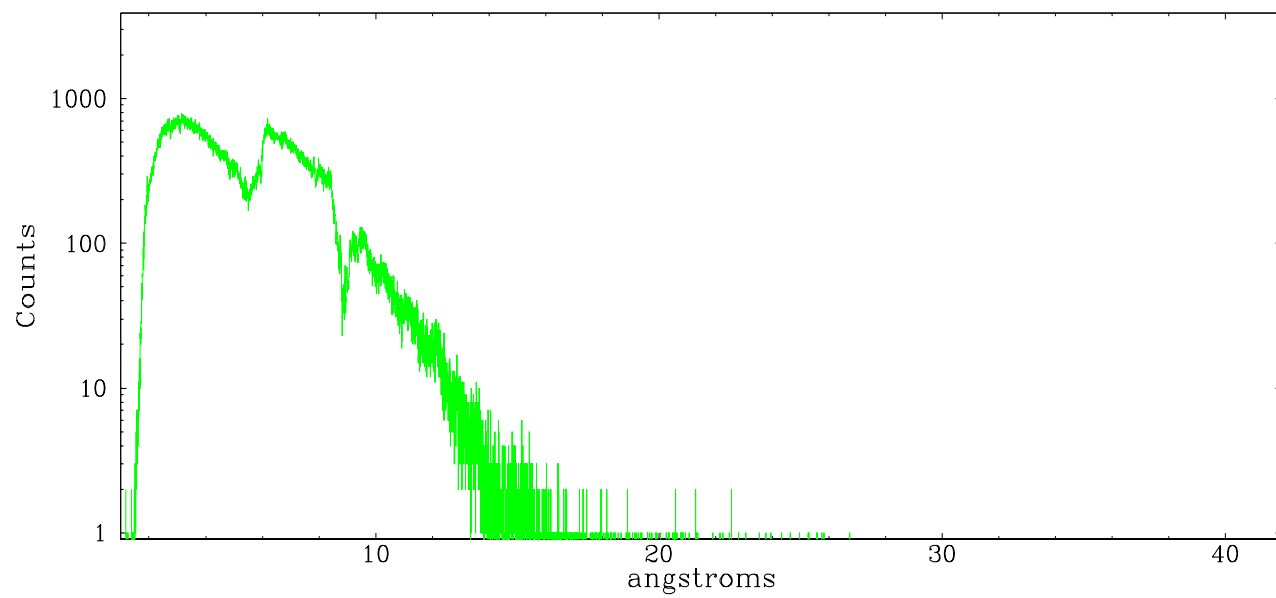
	order -3	order -2	order -1	order 0	order 1	order 2	order 3
Events	51809	28089	580447	180120	679023	26849	49799



meg order -1



meg order +1



A Summary

A.1 Status

V&V Scientist	David Huenemoerder
V&V Date (YYYY-MM-DD)	2007.06.29
V&V Edition	1
V&V Disposition and Status	OK
V&V Charge Time	46.776

A.2 Comments

phase constraint met.

Spectrum shows in image of bad events. This means that there is pileup in the dispersed spectrum. Analysis will be difficult.