

V&V Reference Report

L2 ASCDS Version : 8.4.5

Observation 1918 - L2 Version 5
Chandra X-Ray Center

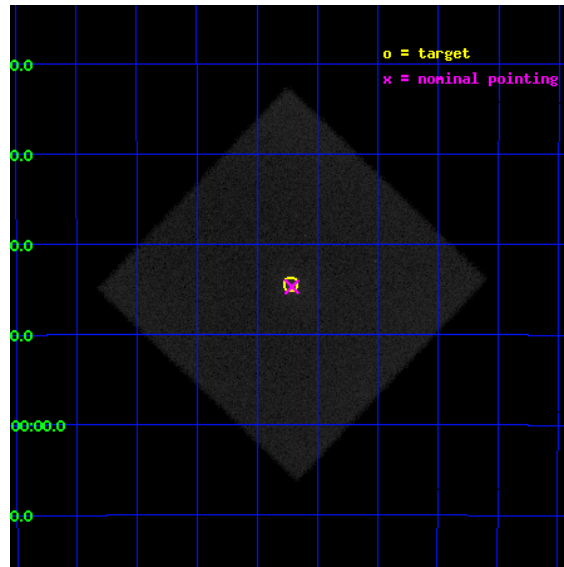
L2 Processing Date : Sep 2 2012

Contents

1	Front	2
2	OBI	3
2.1	OBI	3
2.1.1	Images	3
2.1.2	Parameters	4
2.1.3	Events	4
2.2	Compared Parameters	5
2.3	Aspect	6
2.4	Star Slots	9
2.4.1	Slot 3	9
2.4.2	Slot 4	10
2.4.3	Slot 5	11
2.4.4	Slot 6	12
2.4.5	Slot 7	13
2.5	FID Slots	14
2.5.1	Slot 0	14
2.5.2	Slot 1	15
2.5.3	Slot 2	16
A	Summary	17
A.1	Status	17
A.2	Comments	17

1 Front

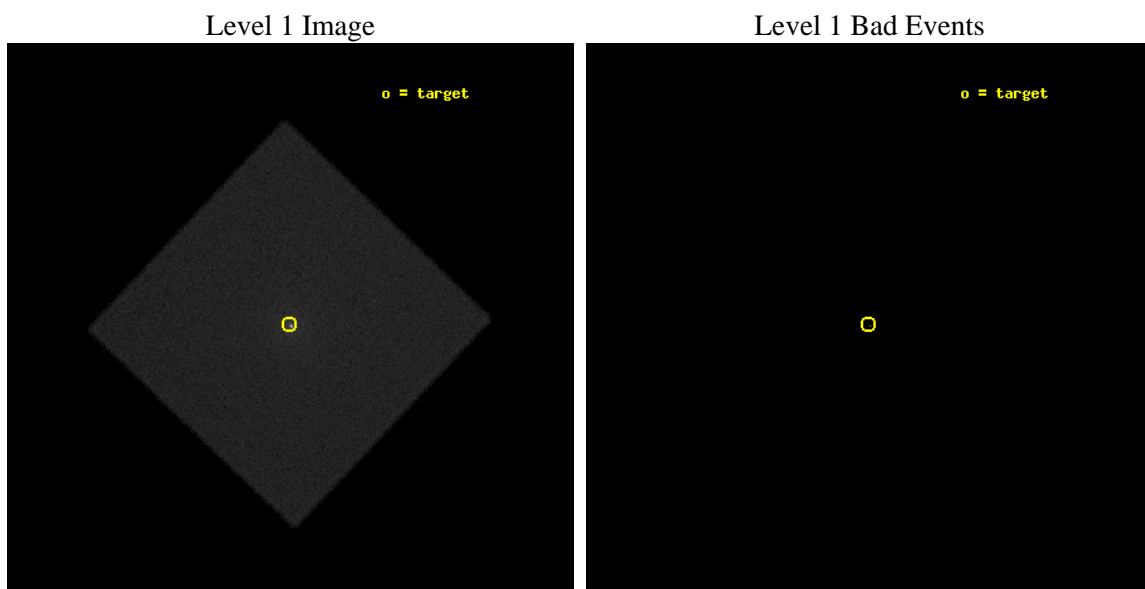
seq_num	400131	Sequence number
obs_id	1918	Observation id
title	A SEARCH FOR X-RAY JETS IN TWO MICRO-QUASARS	Proposal title
observer	Dr. William Heindl	Principal investigator
object	GRS 1758-258	Source name
ra_targ	270.305	Observer's specified target RA [deg]
dec_targ	-25.741389	Observer's specified target Dec [deg]
ra_nom	270.30304061655	Nominal RA [deg]
dec_nom	-25.745351303938	Nominal Dec [deg]
roll_nom	268.53943881604	Nominal Roll [deg]
revision	5	Processing version of data
ontime	10020.400378555	[s]
livetime	9949.9208128043	Ontime multiplied by DTCOR
l2events	439549	Number of level 2 events



2 OBI

2.1 OBI

2.1.1 Images



2.1.2 Parameters

obi_num	0	Obi number	sched_exp_time	10150.000000	[s] Scheduled observation exposure time
ascdsver	8.4.5	Processing system revision	ontime	10020.400378555	[s]
caldsver	4.5.1.1	 	l1events	684461	Number of level 1 events
date	2012-09-03T00:14:32	Date and time of file creation			
revision	5	Processing version of data			

2.1.3 Events

Level 1 Events

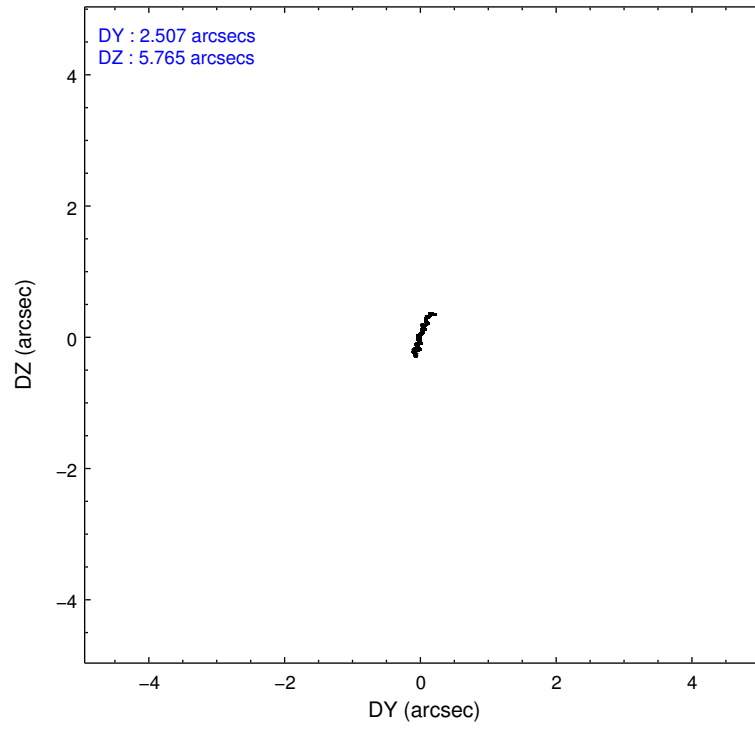
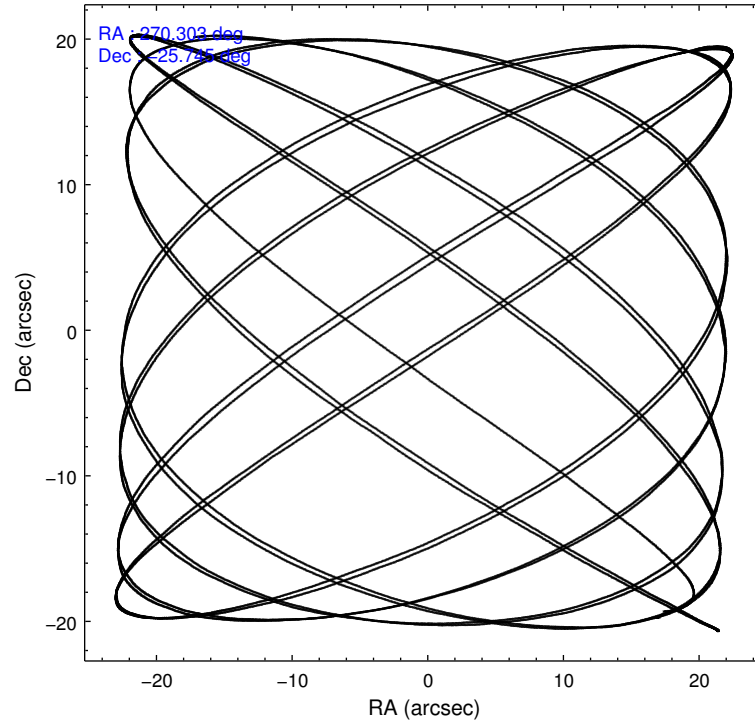
	segment 0
level 1 events	684461
rejected events	3421
rejected %	0%

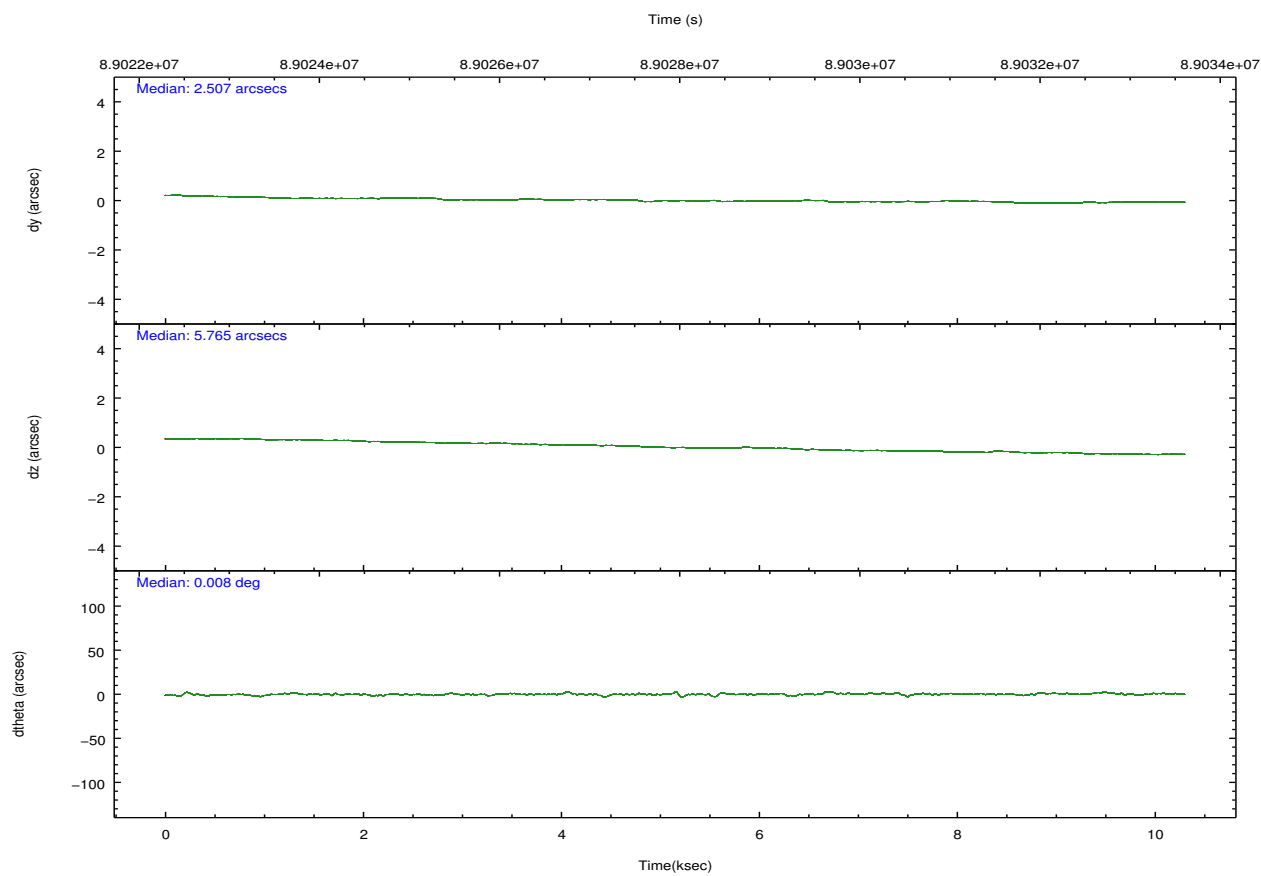
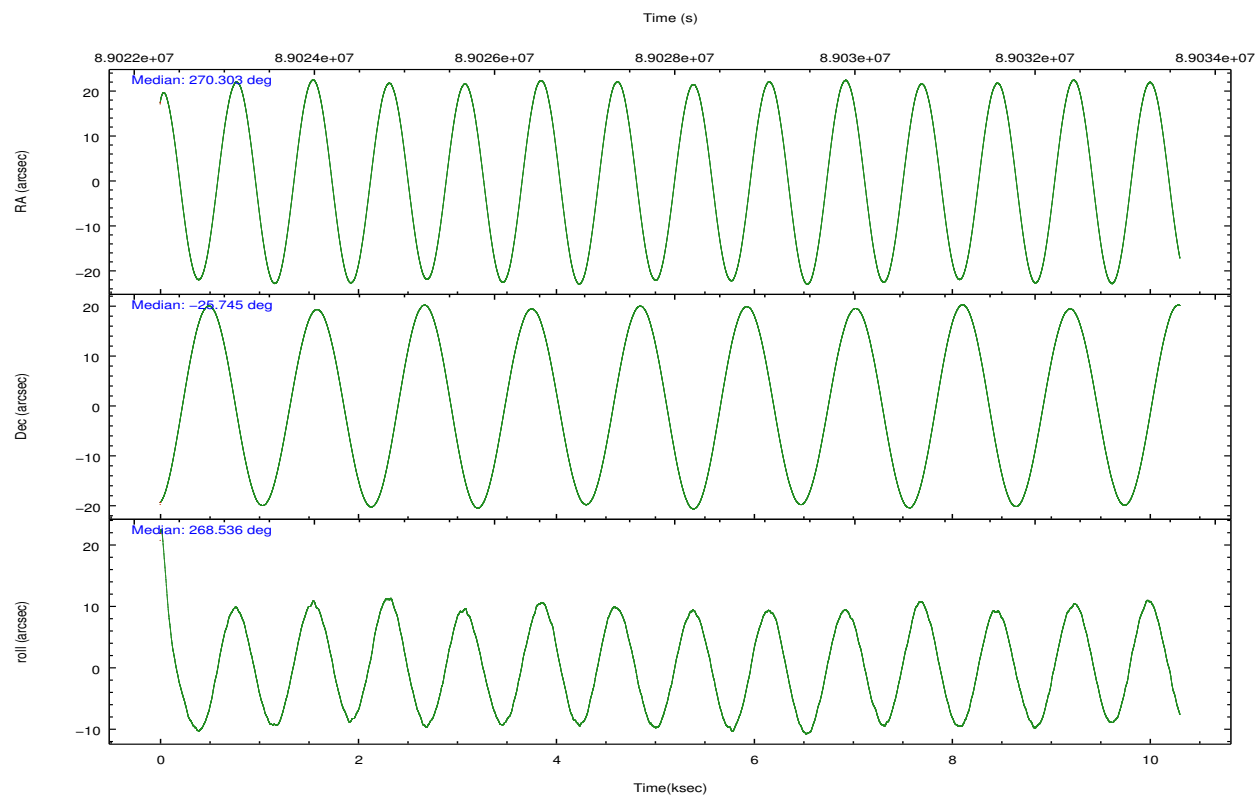
2.2 Compared Parameters

Parameter	Planned	Actual
Instrument	HRC	HRC
Detector	HRC-I	HRC-I
Grating	NONE	NONE
Data mode	OBSERVING	OBSERVING
Observation mode	POINTING	POINTING
[deg] Pointing RA	270.288125	270.3030406165454
[deg] Pointing Dec	-25.721692	-25.74535130393779
[deg] Pointing Roll	268.628453	268.5394388160366
[mm] SIM focus pos	-1.040293	-1.038866356238299
[mm] SIM defocus	0	0.001426264420575141
[mm] SIM translation stage pos	126.985494	126.9829799899862
[mm] SIM translation stage offset	0	0.002508901615314585
[s] Observation start time (MET)	89022949.184000	89022472.81008001
Observation start date	2000-10-27T08:34:45	2000-10-27T08:27:52
[s] Observation end time (MET)	89033099.184000	89033332.17298999
Observation end date	2000-10-27T11:23:55	2000-10-27T11:28:52

Parameter	Planned	Actual
Obspar format version number	7	7
Obspar file type	PREDICTED	ACTUAL
Obspar update status	NONE	UPDATED

2.3 Aspect



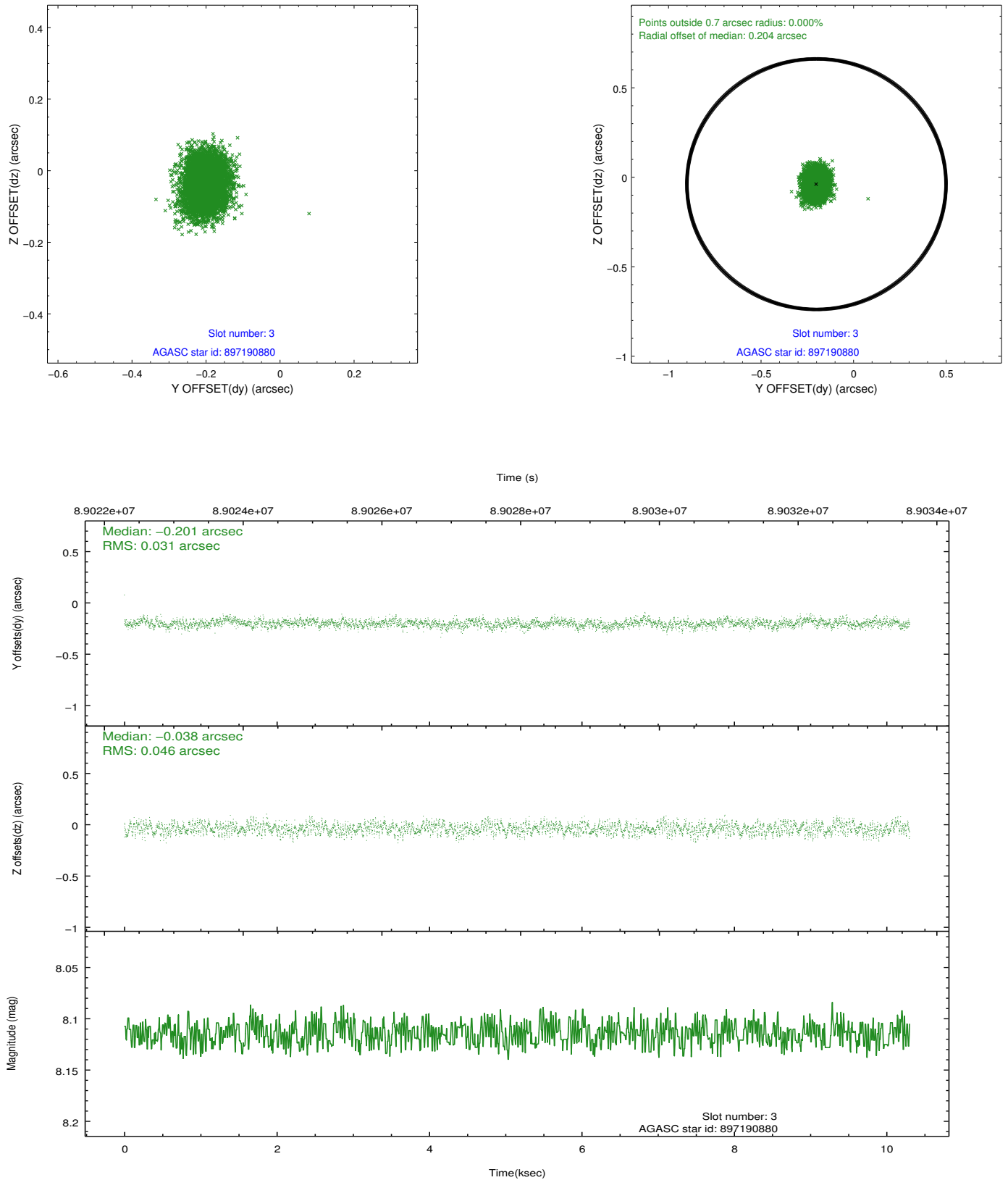


Slot Statistics

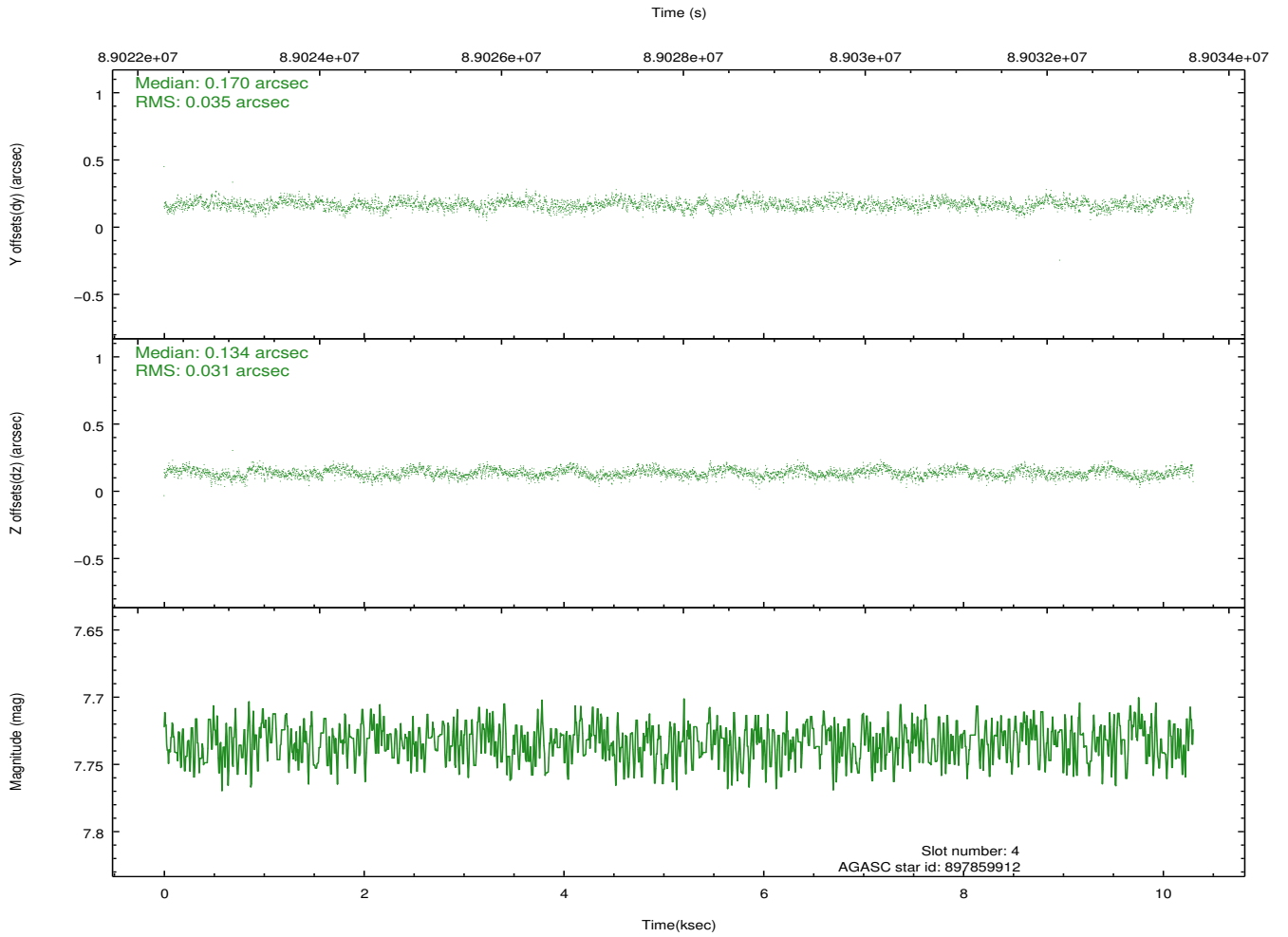
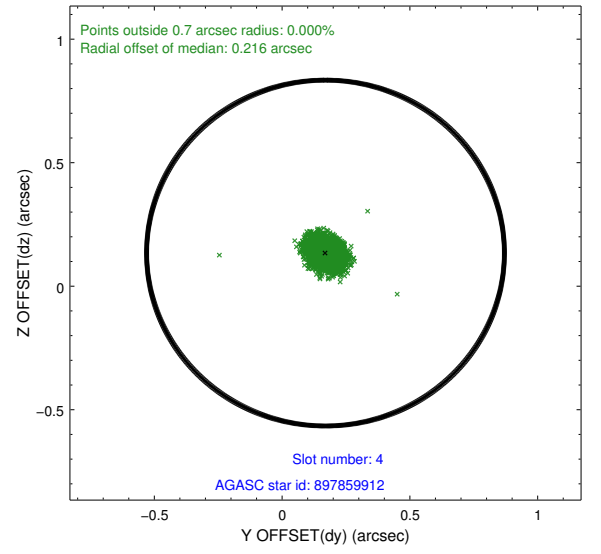
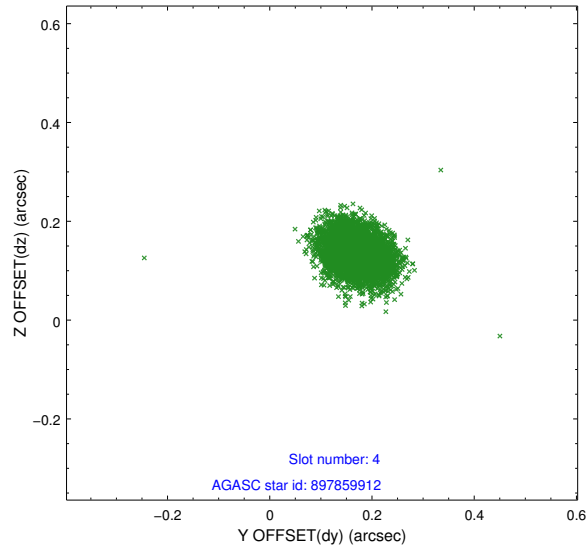
slot	status	id	mag	n_pts	med_dy	med_dz	dr1	dr2	ra	dec	mean_y	mean_z
0	FID	HRC-I-1	6.99	2514	0.016	0.001	0.010	0.019	0.000000	0.000000	-757.95	-1293.61
1	FID	HRC-I-2	7.03	2514	0.053	-0.026	0.008	0.015	0.000000	0.000000	854.42	-1295.70
2	FID	HRC-I-3	7.08	2513	0.050	-0.066	0.012	0.026	0.000000	0.000000	-1186.09	1010.37
3	GUIDE	897190880	8.11	5027	-0.201	-0.038	0.059	0.095	269.584058	-25.142408	-2023.21	-2343.46
4	GUIDE	897859912	7.73	5027	0.170	0.134	0.050	0.080	270.849161	-26.319822	2113.65	1861.78
5	GUIDE	897326672	8.23	5027	0.200	0.074	0.053	0.086	270.237029	-26.222744	1808.63	-120.82
6	GUIDE	897188632	8.64	5022	-0.081	-0.140	0.069	0.109	269.725883	-25.281908	-1533.98	-1867.37
7	GUIDE	897323472	8.46	5025	-0.091	-0.025	0.070	0.117	270.860121	-25.266503	-1678.56	1822.50

2.4 Star Slots

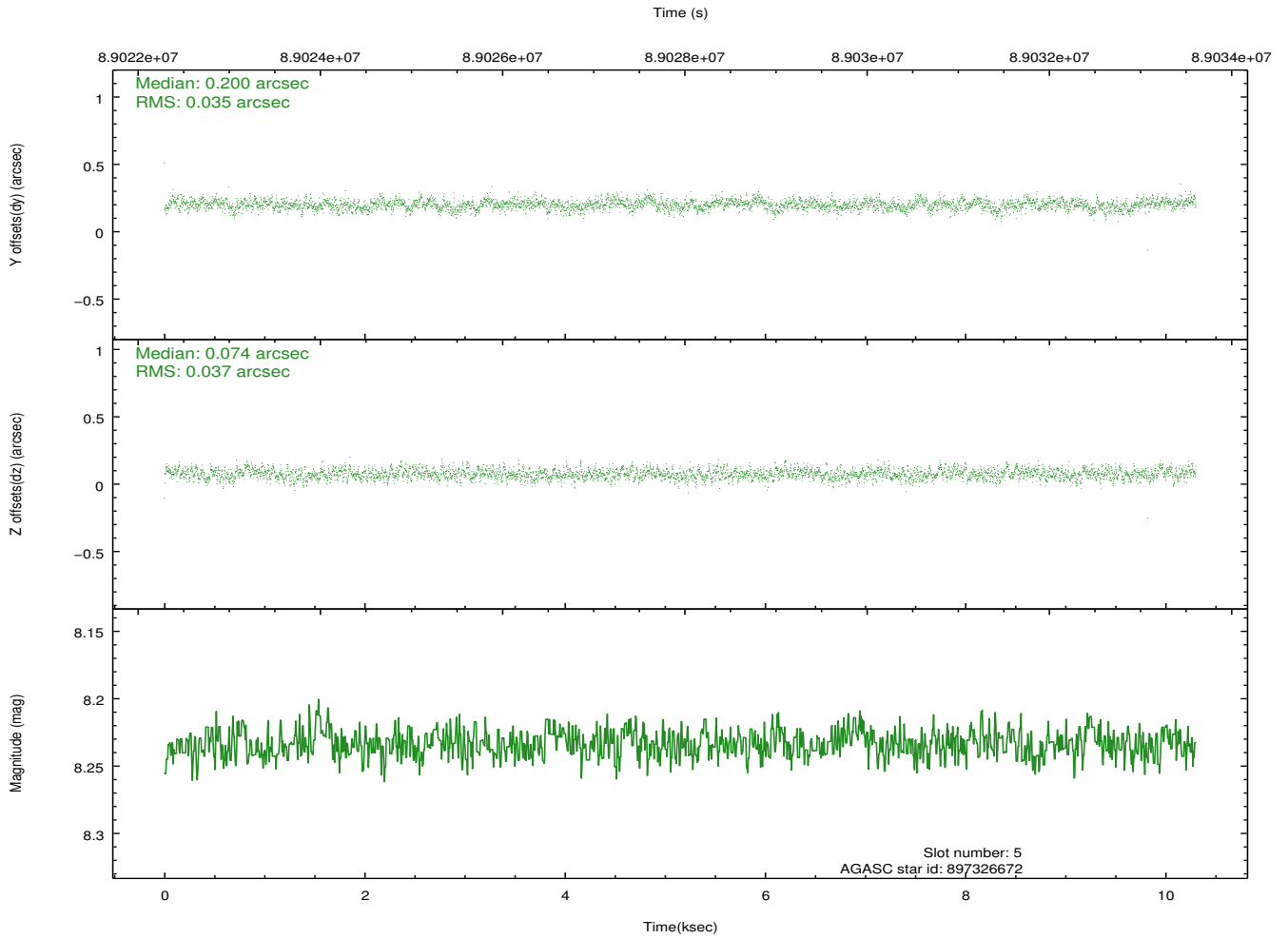
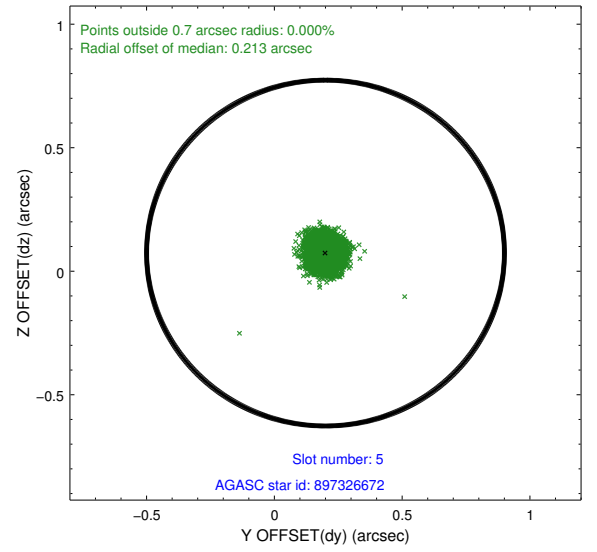
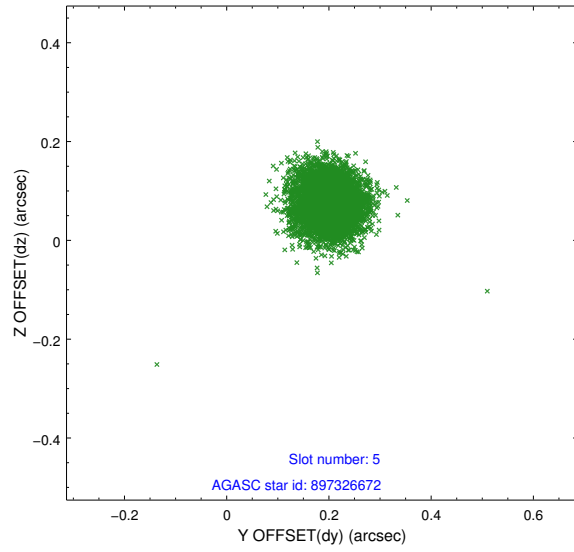
2.4.1 Slot 3



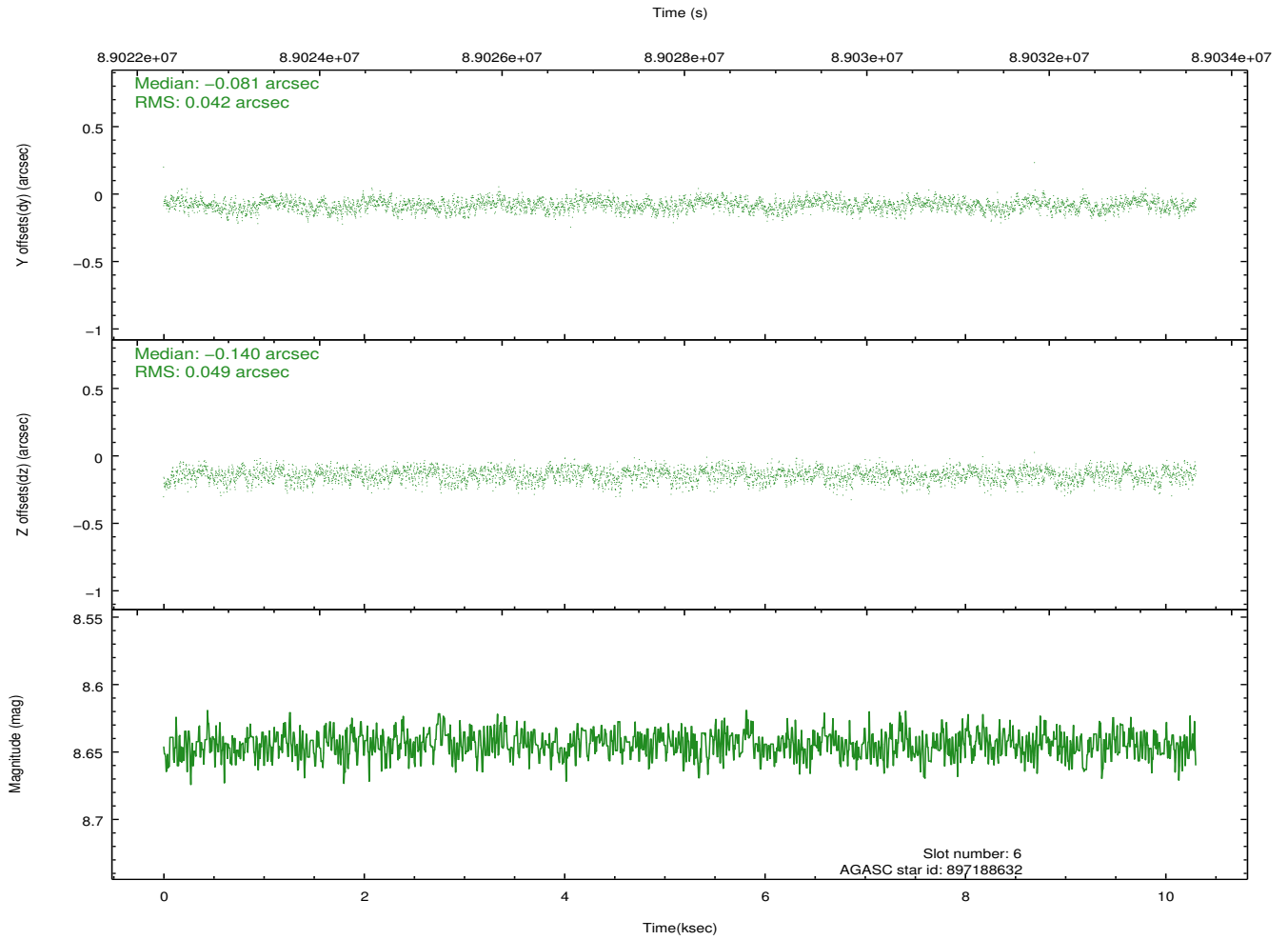
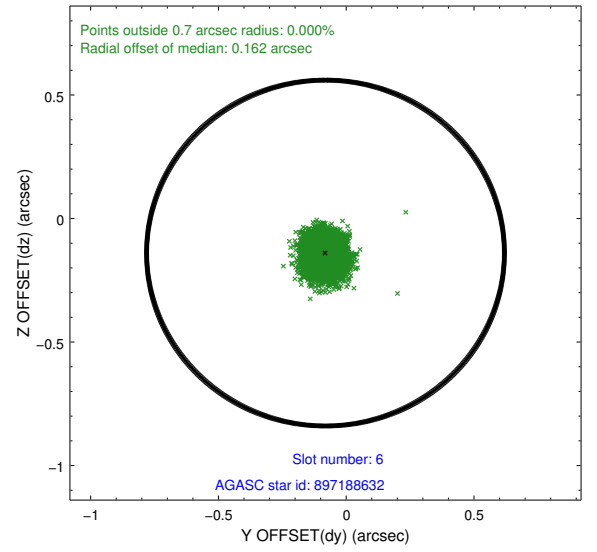
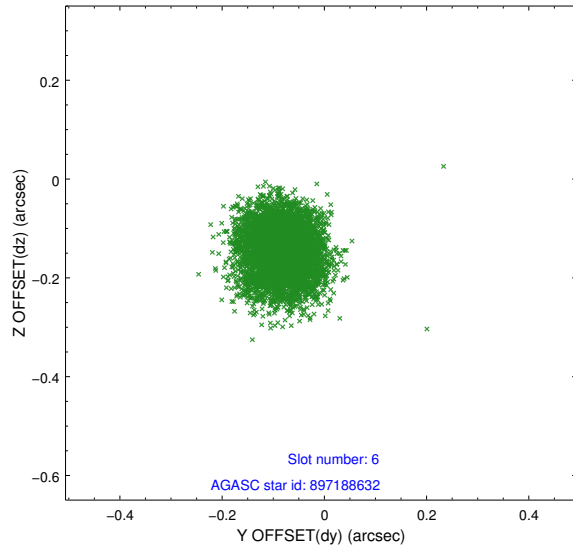
2.4.2 Slot 4



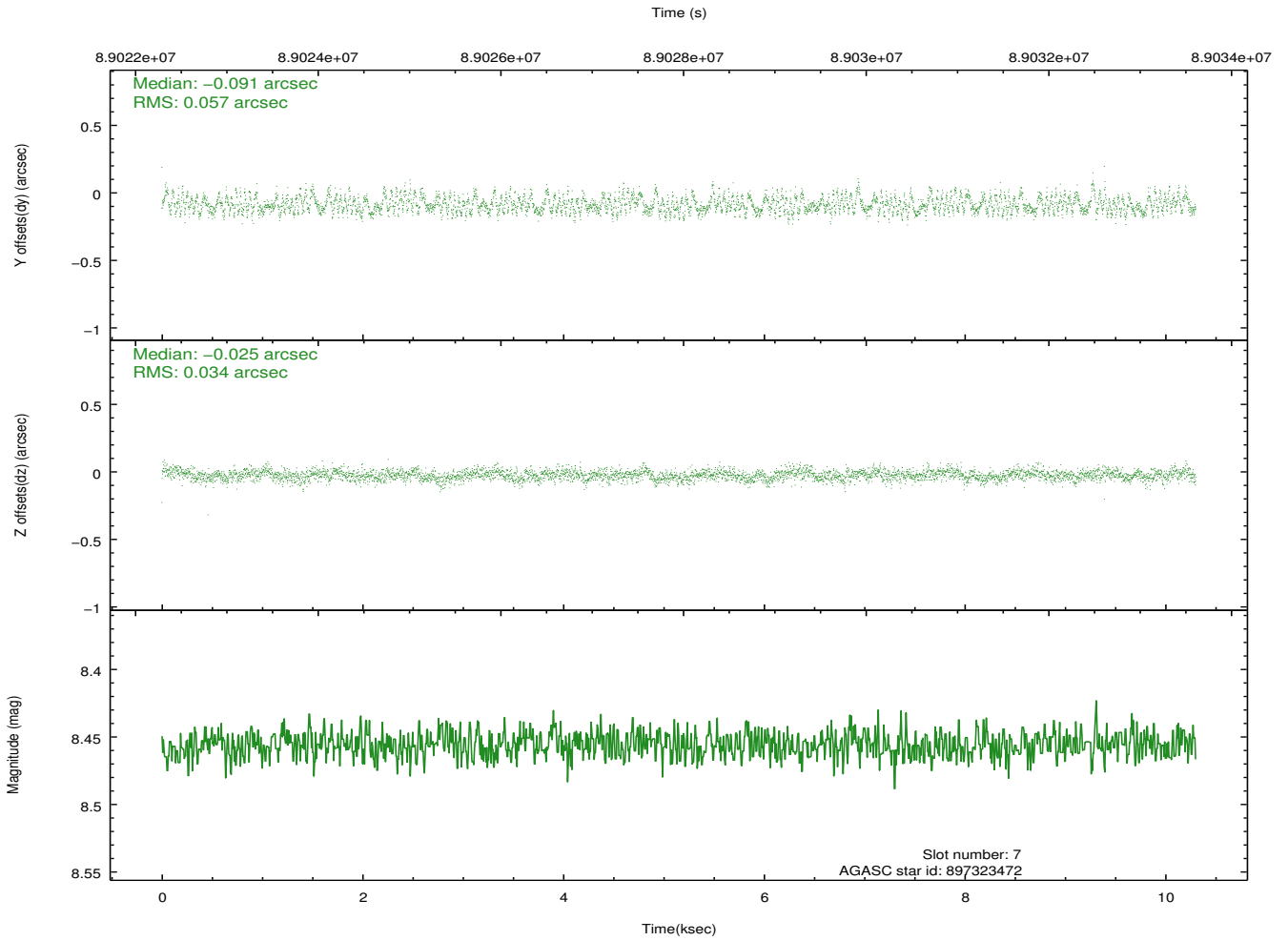
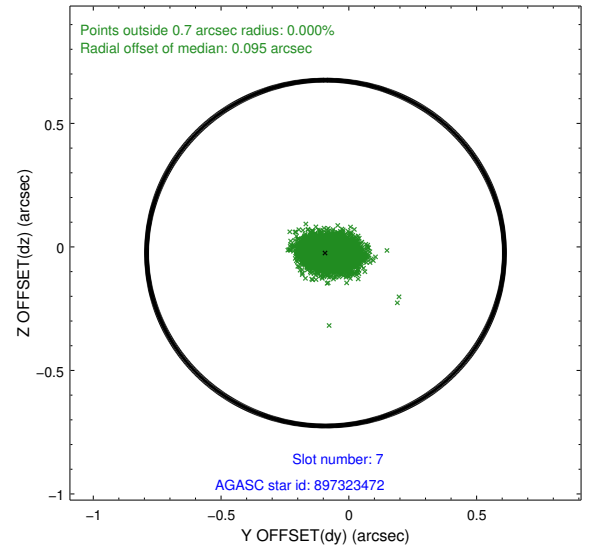
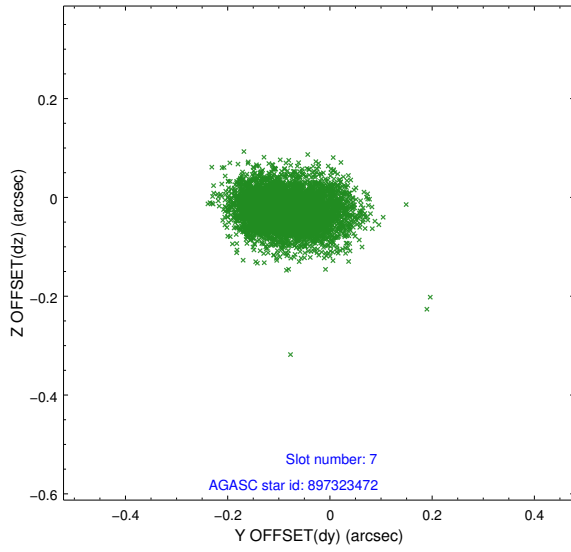
2.4.3 Slot 5



2.4.4 Slot 6

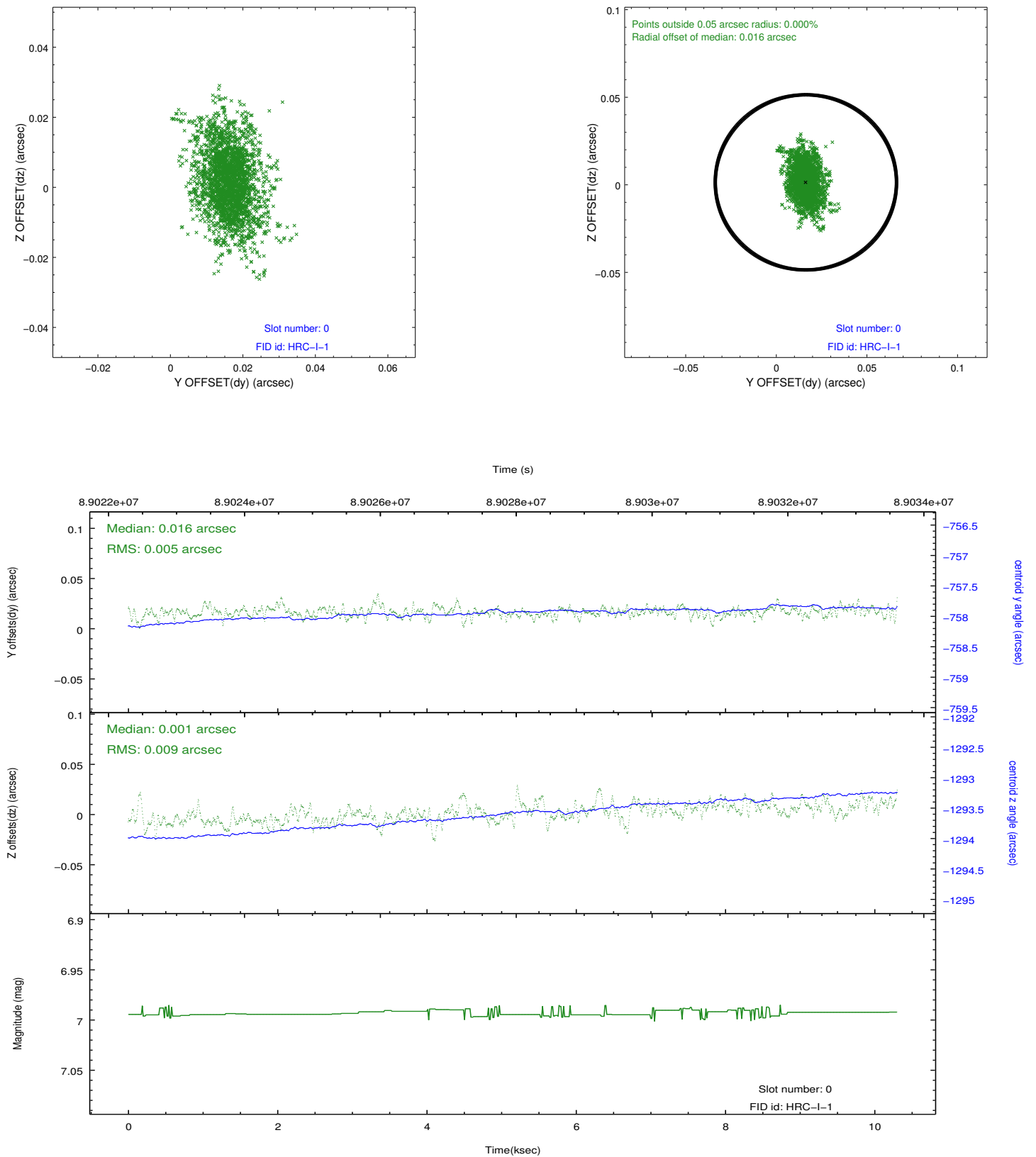


2.4.5 Slot 7

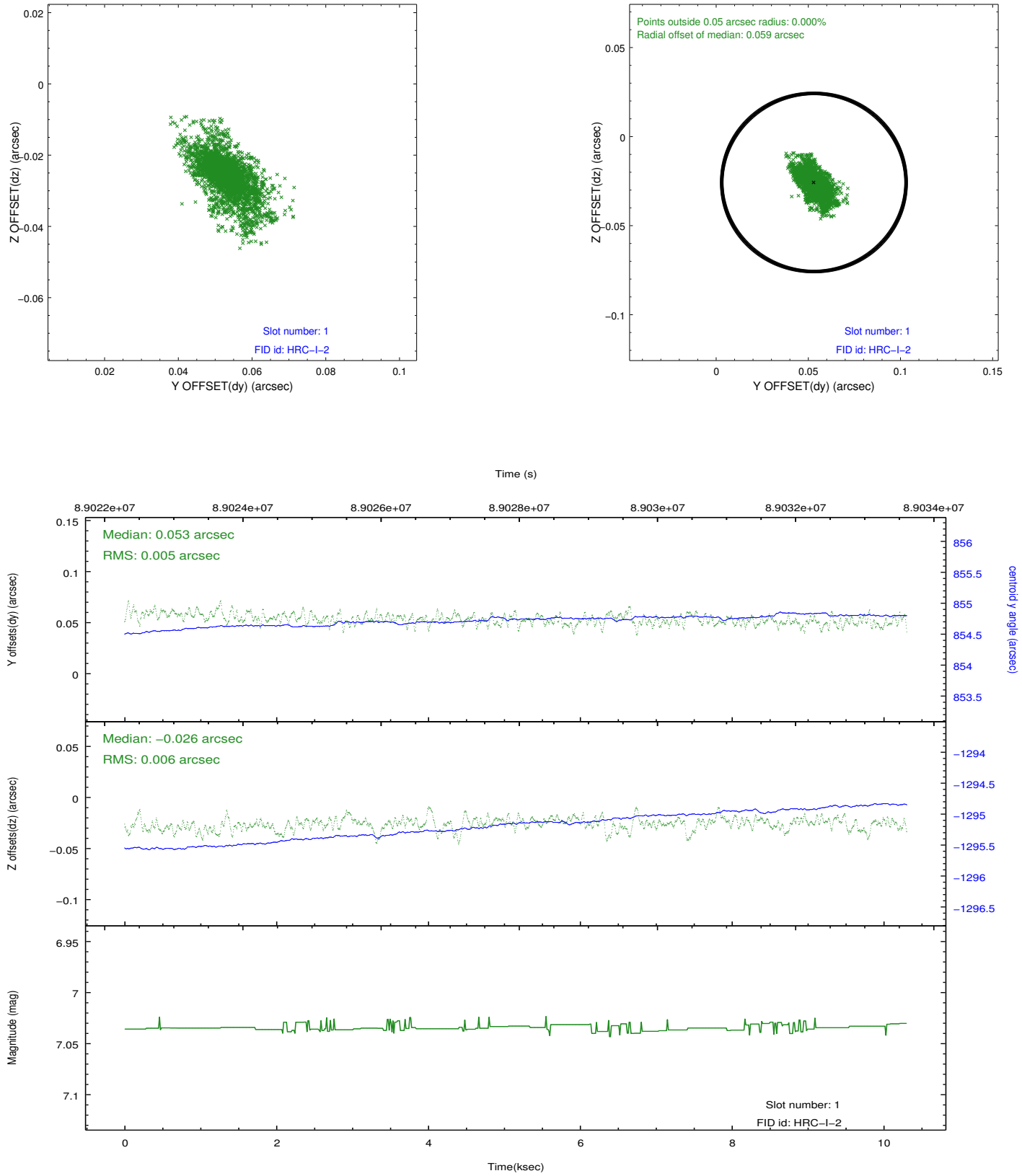


2.5 FID Slots

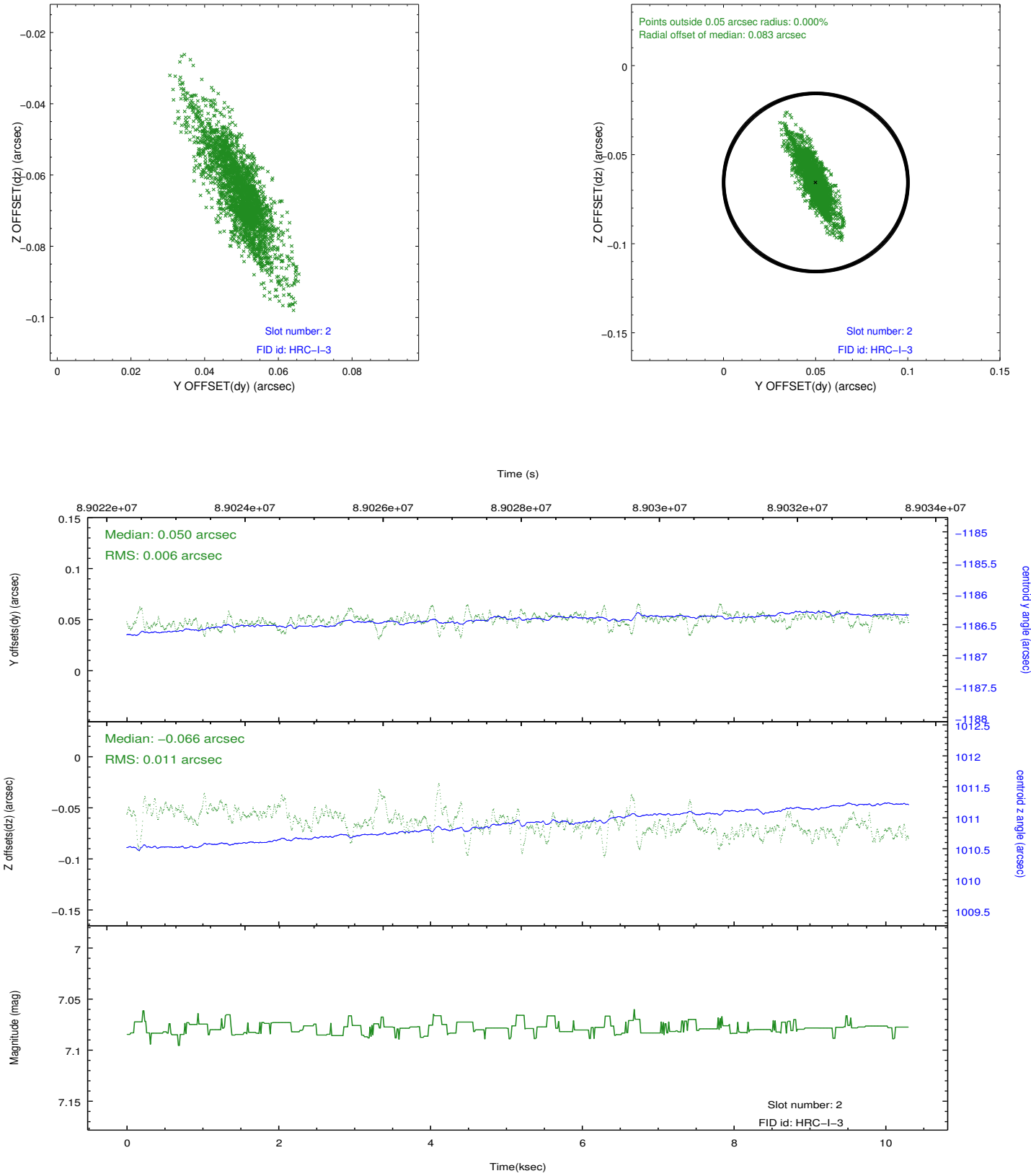
2.5.1 Slot 0



2.5.2 Slot 1



2.5.3 Slot 2



A Summary

A.1 Status

V&V Scientist	Jen Lauer
V&V Date (YYYY-MM-DD)	2012.09.10
V&V Edition	1
V&V Disposition and Status	OK
V&V Charge Time	10.018

A.2 Comments