

V&V Reference Report

L2 ASCDS Version : 7.6.10

Observation 1916 - L2 Version 001
Chandra X-Ray Center

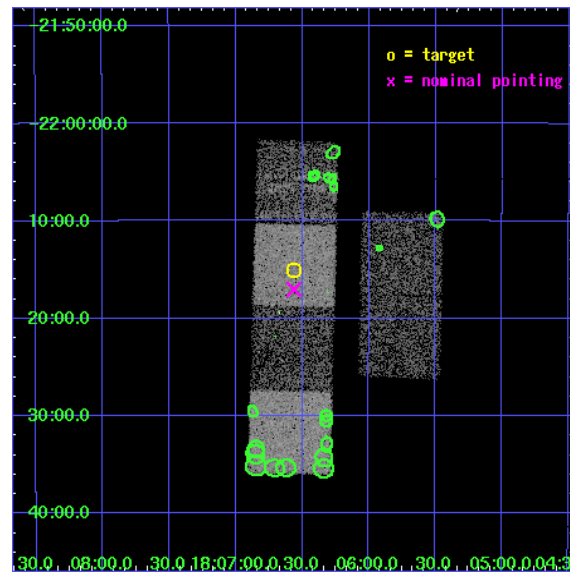
L2 Processing Date : Jan 10 2007

Contents

1	Front	2
2	OBI	3
2.1	OBI	3
2.1.1	Images	3
2.1.2	Bias	3
2.1.3	Parameters	4
2.1.4	Events	4
2.2	Compared Parameters	5
2.3	Aspect	6
2.4	Star Slots	9
2.4.1	Slot 3	9
2.4.2	Slot 4	10
2.4.3	Slot 5	11
2.4.4	Slot 6	12
2.4.5	Slot 7	13
2.5	FID Slots	14
2.5.1	Slot 0	14
2.5.2	Slot 1	15
2.5.3	Slot 2	16
3	Point Sources	17
A	Summary	18
A.1	Status	18
A.2	Comments	18

1 Front

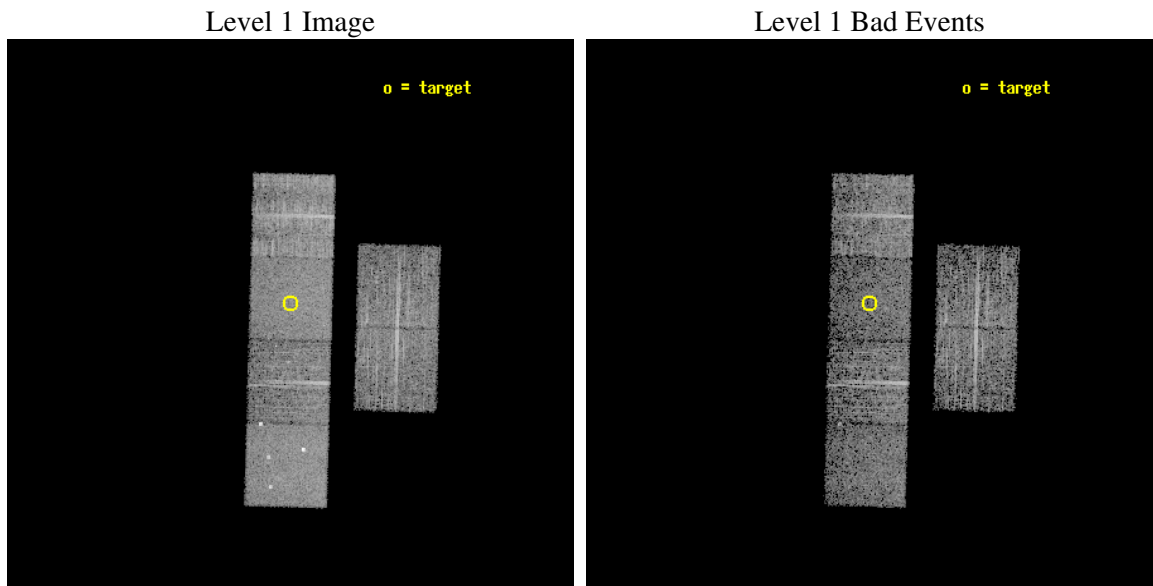
seq_num	400129
obs_id	1916
title	X-RAY BURSTERS WITH LOW PERSISTENT X-RAY LUMINOSITIES
observer	PROF FRANK VERBUNT
object	SAX J1806.5-2215
dtcycle	0
cycle	P
ra_targ	271.641667
dec_targ	-22.251667
ra_nom	271.64073370564
dec_nom	-22.284080624408
roll_nom	271.51932433105
revision	2
ontime	4755.2000044286
livetime	4694.9867987349
ontime2	4755.2000044286
ontime3	4755.2000044286
ontime5	4755.2000044286
ontime6	4755.2000044286
ontime7	4755.2000044286
ontime8	4751.9590441734
l2events	55408



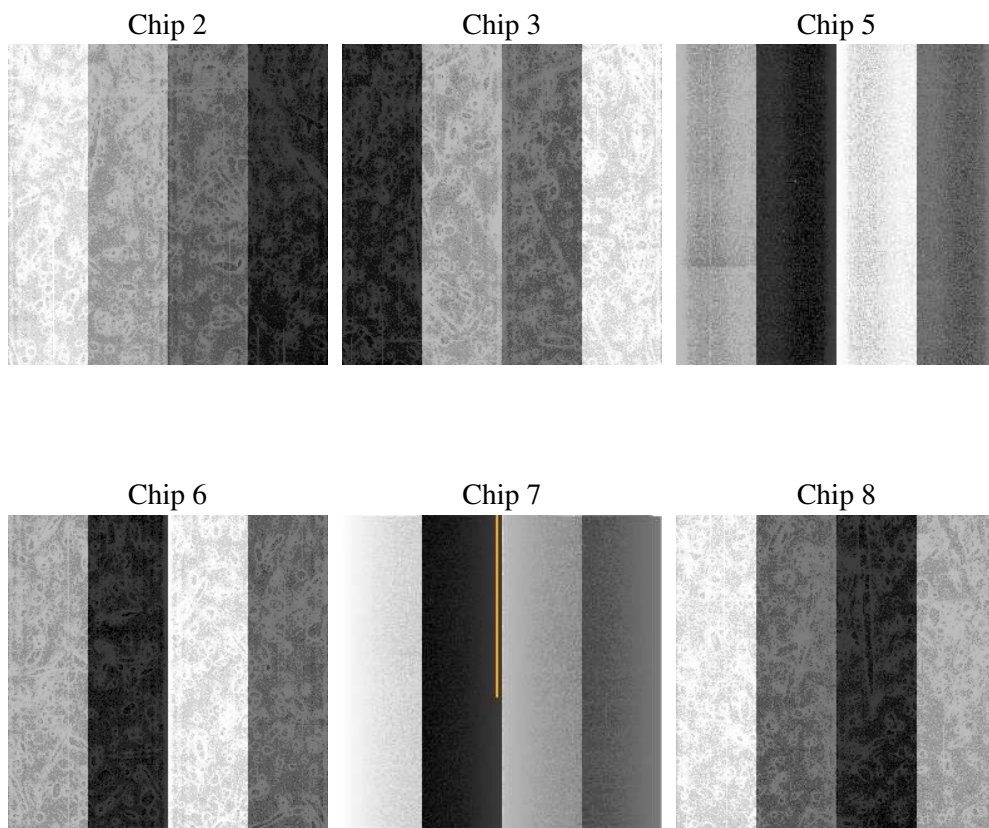
2 OBI

2.1 OBI

2.1.1 Images



2.1.2 Bias



2.1.3 Parameters

obi_num	1
ascdsver	7.6.10
caldsver	3.3.0
date	2007-01-11T02:18:33
revision	2

sched_exp_time	5000.000000
ontime	4755.2000044286
ontime2	4755.2000044286
ontime3	4755.2000044286
ontime5	4755.2000044286
ontime6	4755.2000044286
ontime7	4755.2000044286
ontime8	4751.9590441734
l1events	235190

2.1.4 Events

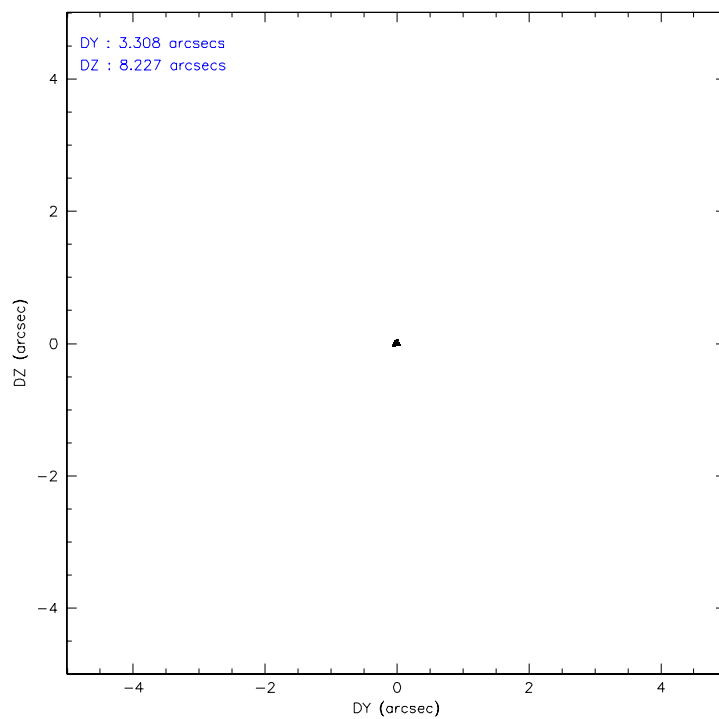
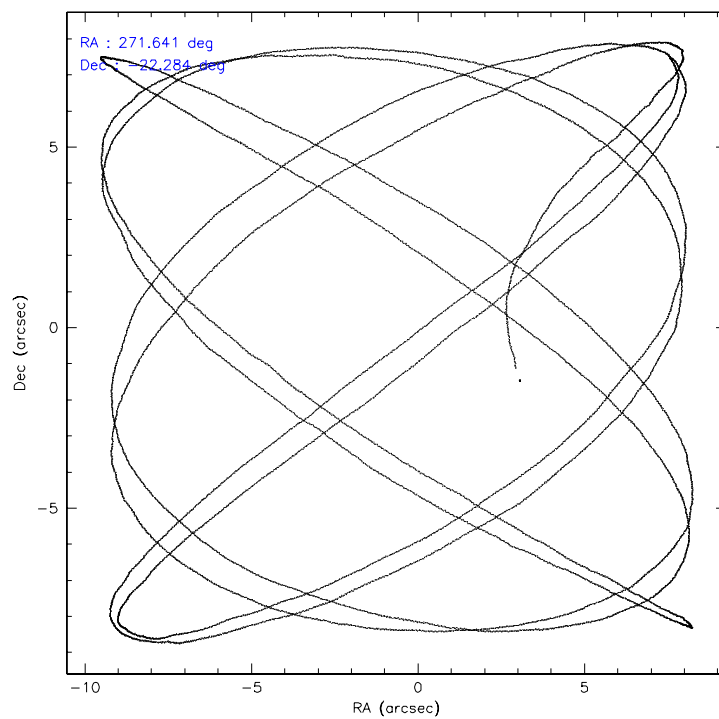
	ccd 2	ccd 3	ccd 5	ccd 6	ccd 7	ccd 8
level 1 events	33327	32775	45951	33651	40033	49453
rejected events	28826	28322	23136	28707	21892	34208
rejected %	86%	86%	50%	85%	54%	69%

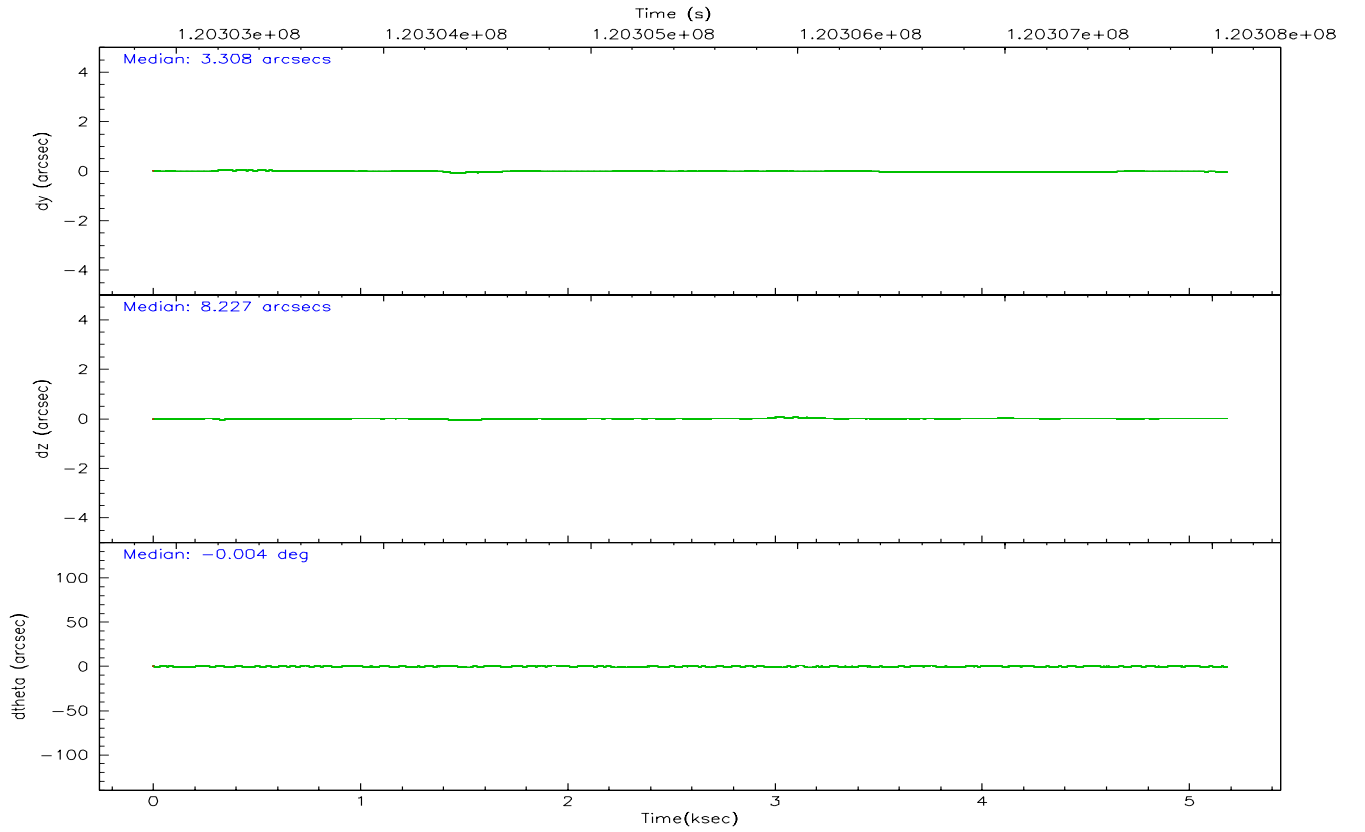
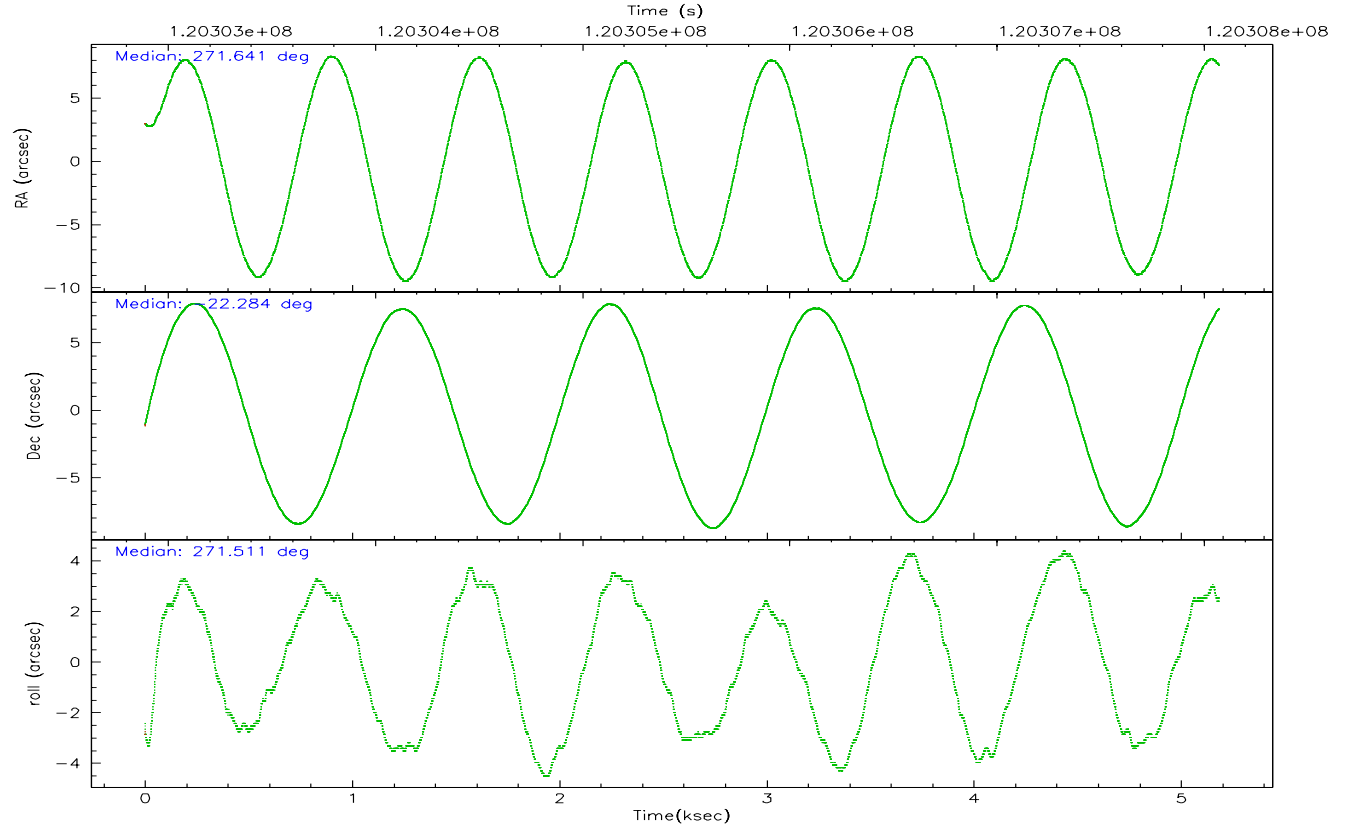
	ccd 2	ccd 3	ccd 5	ccd 6	ccd 7	ccd 8
grade 0 events	2104	2083	3856	2375	1842	5353
	6%	6%	8%	7%	4%	10%
grade 1 events	14	17	166	16	30	61
	0%	0%	0%	0%	0%	0%
grade 2 events	938	892	6331	1046	3599	2340
	2%	2%	13%	3%	8%	4%
grade 3 events	334	382	1044	374	1684	2446
	1%	1%	2%	1%	4%	4%
grade 4 events	391	352	968	371	1603	2156
	1%	1%	2%	1%	4%	4%
grade 5 events	986	1075	3343	1285	3599	1623
	2%	3%	7%	3%	8%	3%
grade 6 events	736	747	10633	780	9426	2951
	2%	2%	23%	2%	23%	5%
grade 7 events	27824	27227	19610	27404	18250	32523
	83%	83%	42%	81%	45%	65%

2.2 Compared Parameters

Parameter	Planned	Actual	Parameter	Planned	Actual
Instrument	ACIS	ACIS	Obspar format version number	6	6
Detector	ACIS-235678	ACIS-235678	Obspar file type	PREDICTED	ACTUAL
Grating	NONE	NONE	Obspar update status	NONE	UPDATED
Data mode	FAINT	FAINT	Number of optional ACIS chips dropped	0	0
Observation mode	POINTING	POINTING	On-chip summing requested	N	N
Pointing RA	271.624972	271.6407337056372	Subarray requested	NONE	NONE
Pointing Dec	-22.261029	-22.28408062440761	Alternating exposures requested	N	N
Pointing Roll	271.356740	271.5193243310491	Primary exposure time	0.000000	3.2
SIM focus pos (mm)	-0.684267	-0.6828225247311905			
SIM defocus (mm)	0	0.001444936568705701			
SIM translation stage pos (mm)	-190.132523	-190.1400660498719			
SIM translation stage offset (mm)	0	0.00754346686406393			
Observation start time	120303071.184000	120302426.1874			
Observation start date	2001-10-24T09:30:07	2001-10-24T09:20:26			
Observation end time	120308071.184000	120308596.17515			
Observation end date	2001-10-24T10:53:27	2001-10-24T11:03:16			
Read mode	TIMED	TIMED			

2.3 Aspect



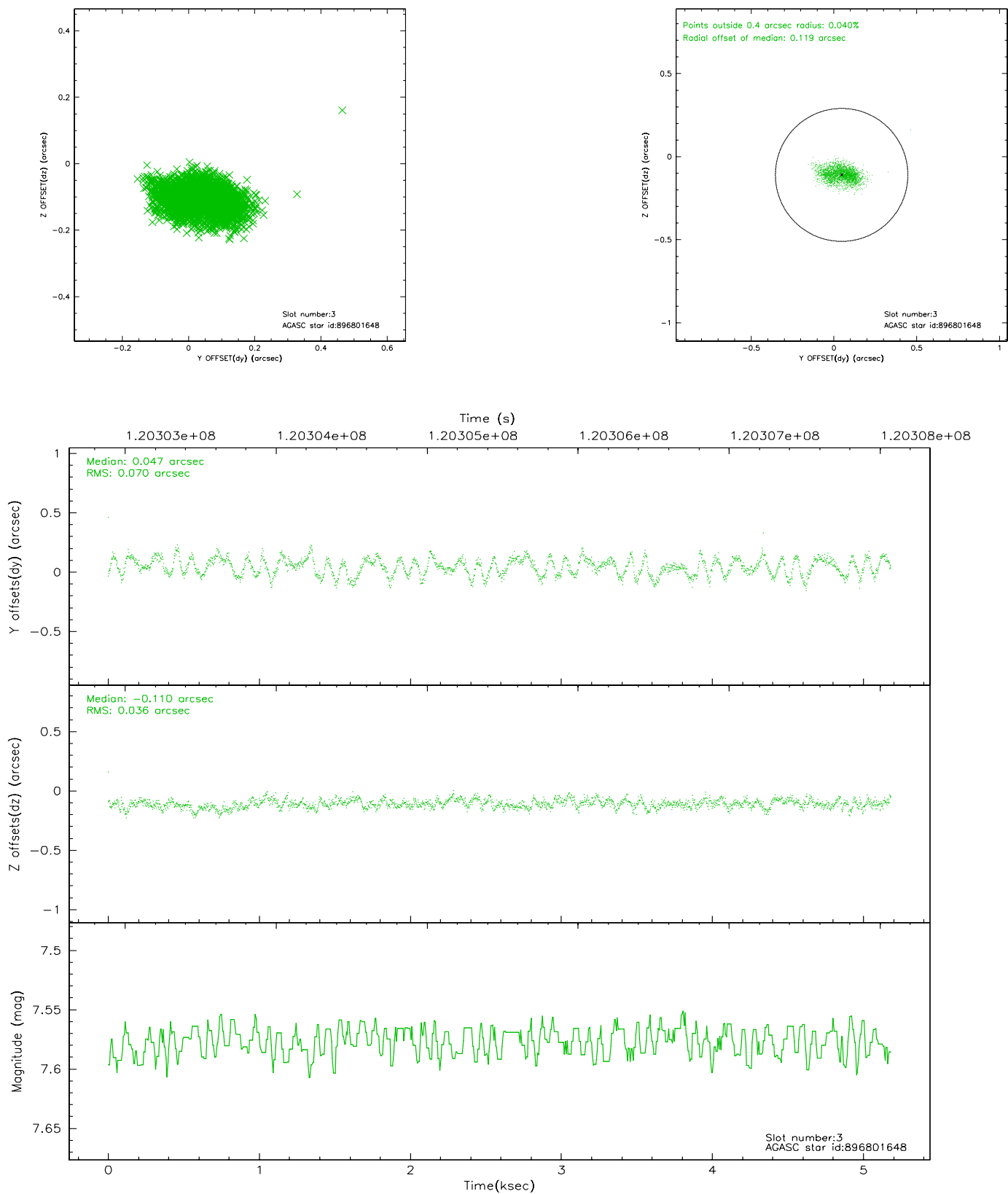


Slot Statistics

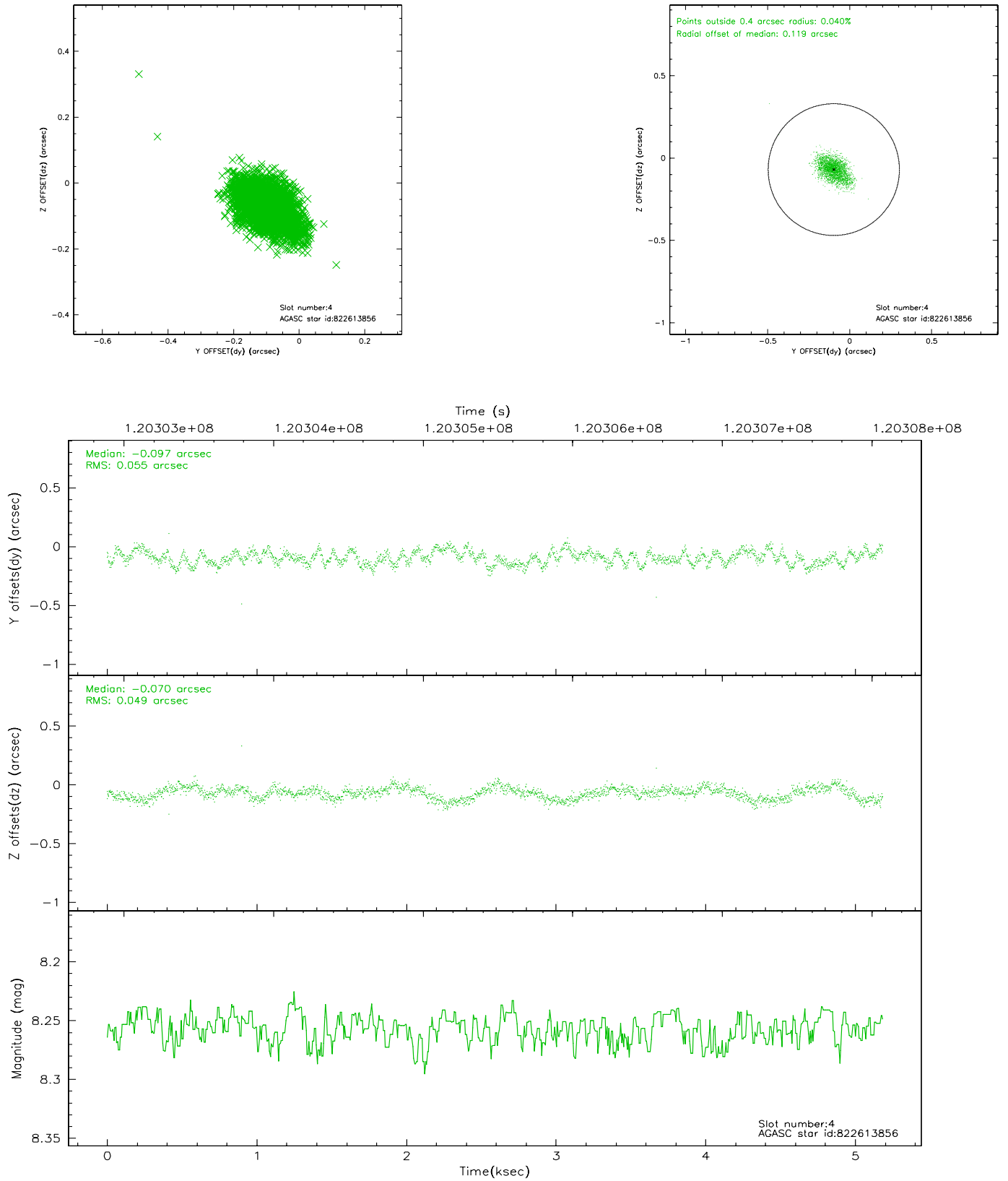
slot	status	id	mag	n_pts	med_dy	med_dz	dr1	dr2	ra	dec	mean_y	mean_z
0	FID	ACIS-S-2	7.11	1265	0.011	0.016	0.006	0.011	0.000000	0.000000	-755.95	-1729.40
1	FID	ACIS-S-4	7.19	1265	-0.073	-0.009	0.005	0.009	0.000000	0.000000	2156.73	177.83
2	FID	ACIS-S-5	7.24	1265	0.031	0.003	0.007	0.011	0.000000	0.000000	-1807.26	172.87
3	GUIDE	896801648	7.58	2529	0.047	-0.110	0.084	0.137	270.982903	-22.837451	2029.60	-2178.36
4	GUIDE	822613856	8.26	2530	-0.097	-0.070	0.078	0.126	272.285326	-21.881164	-1309.27	2237.03
5	GUIDE	822616512	8.68	2529	-0.098	0.153	0.075	0.127	272.141985	-21.637253	-2201.46	1784.00
6	GUIDE	896805608	8.24	2530	0.198	0.125	0.055	0.088	271.958650	-22.879833	2254.22	1055.32
7	GUIDE	820908040	8.97	2529	-0.050	-0.095	0.083	0.129	270.888554	-22.202158	-262.32	-2448.23

2.4 Star Slots

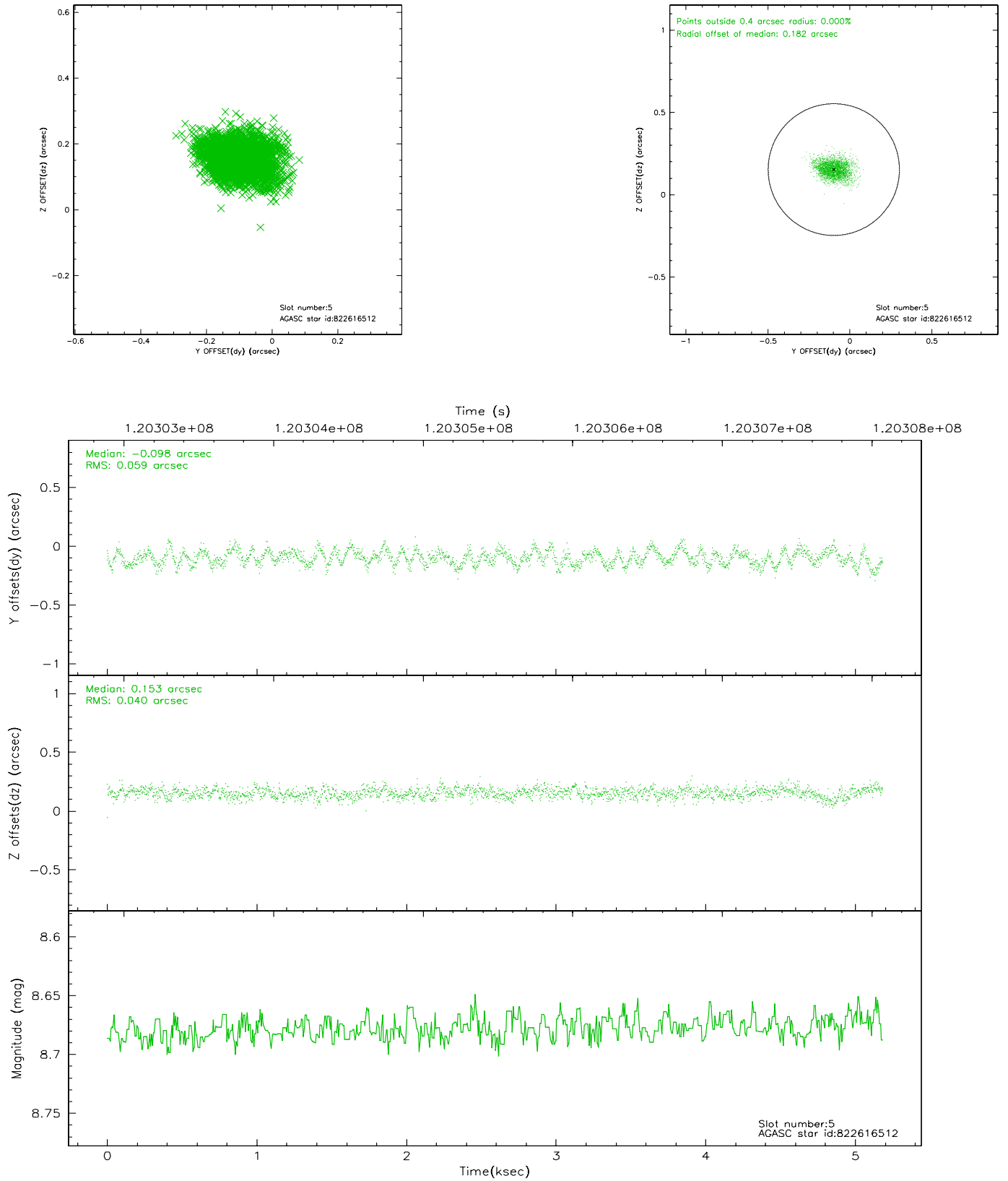
2.4.1 Slot 3



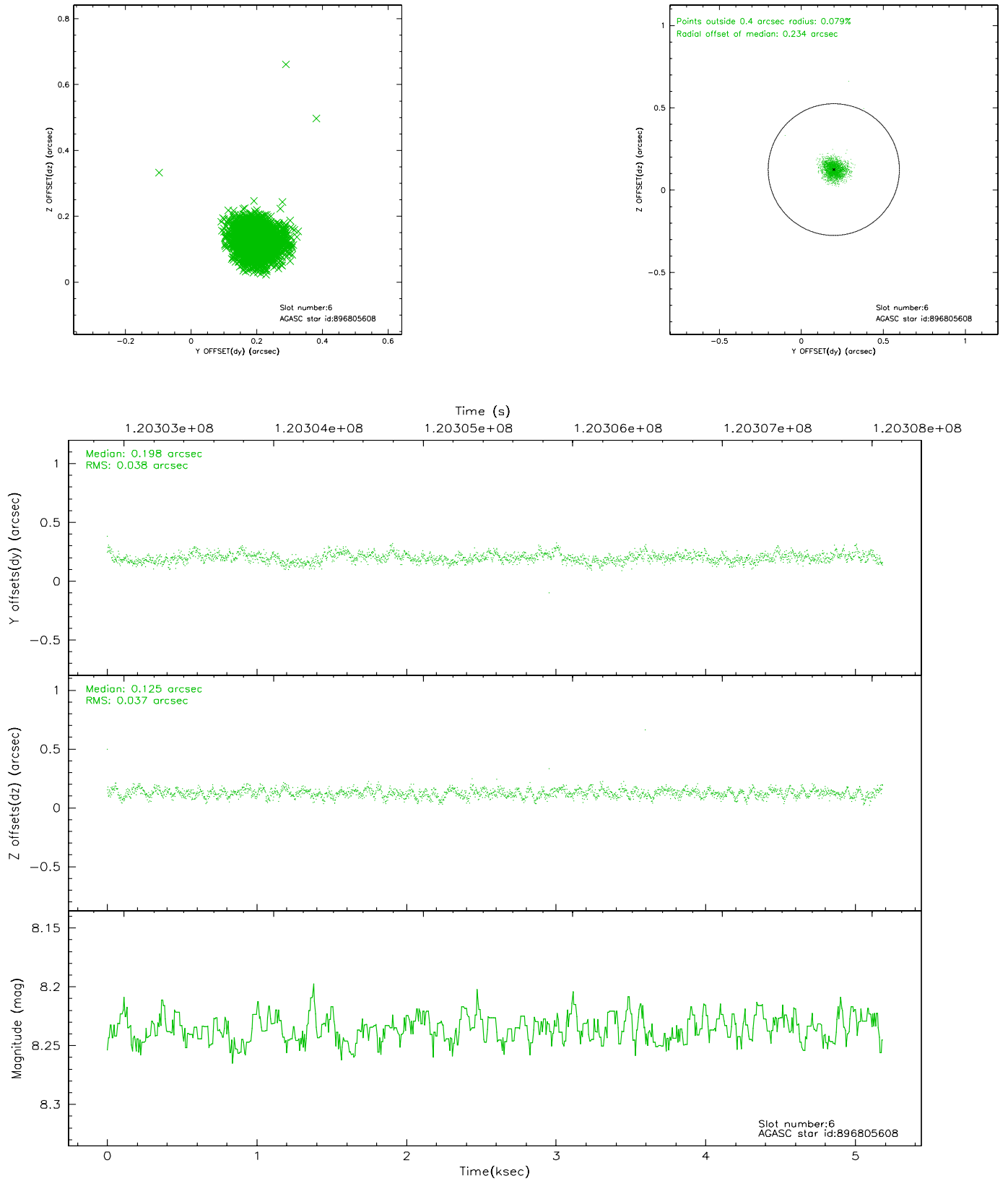
2.4.2 Slot 4



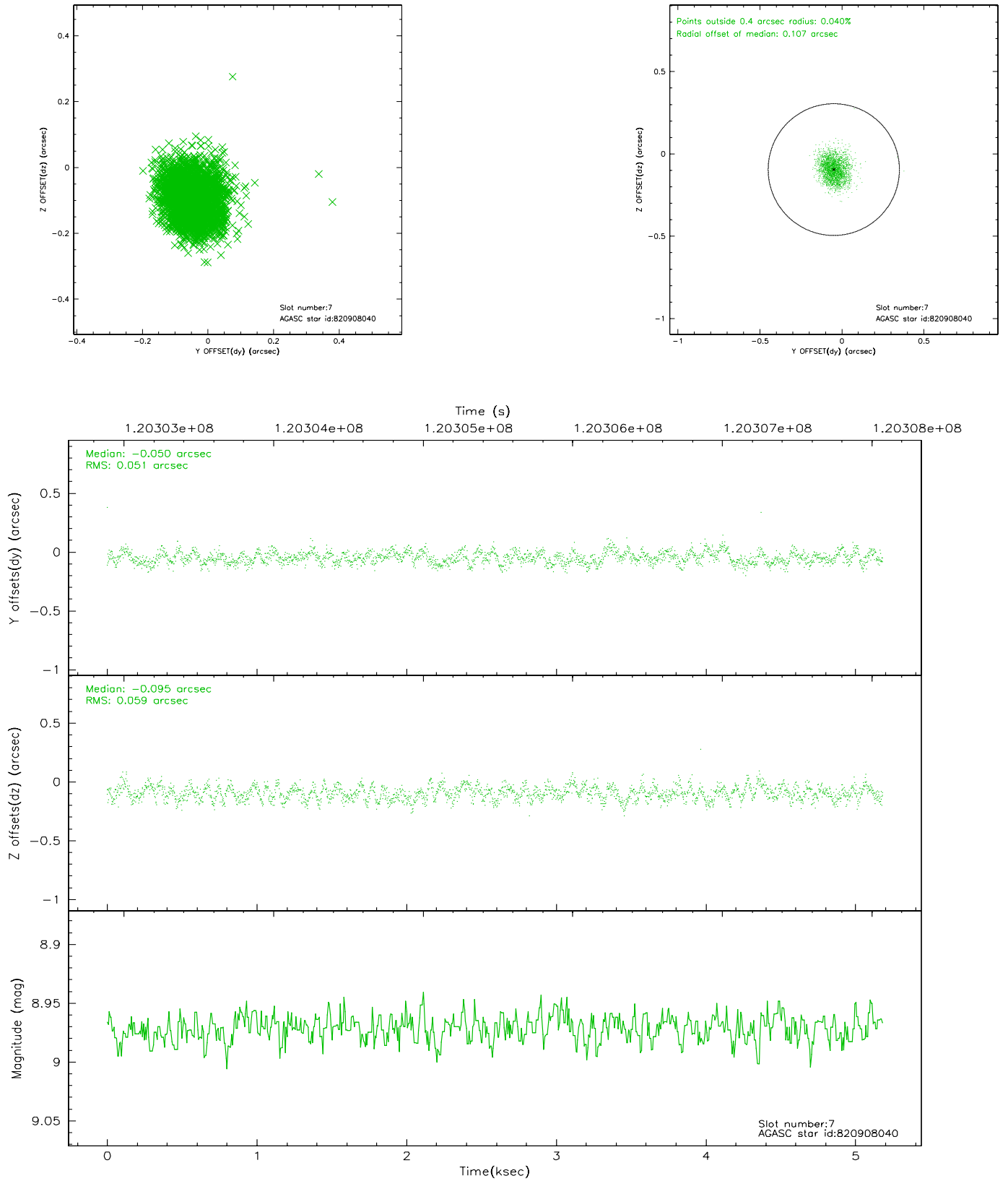
2.4.3 Slot 5



2.4.4 Slot 6

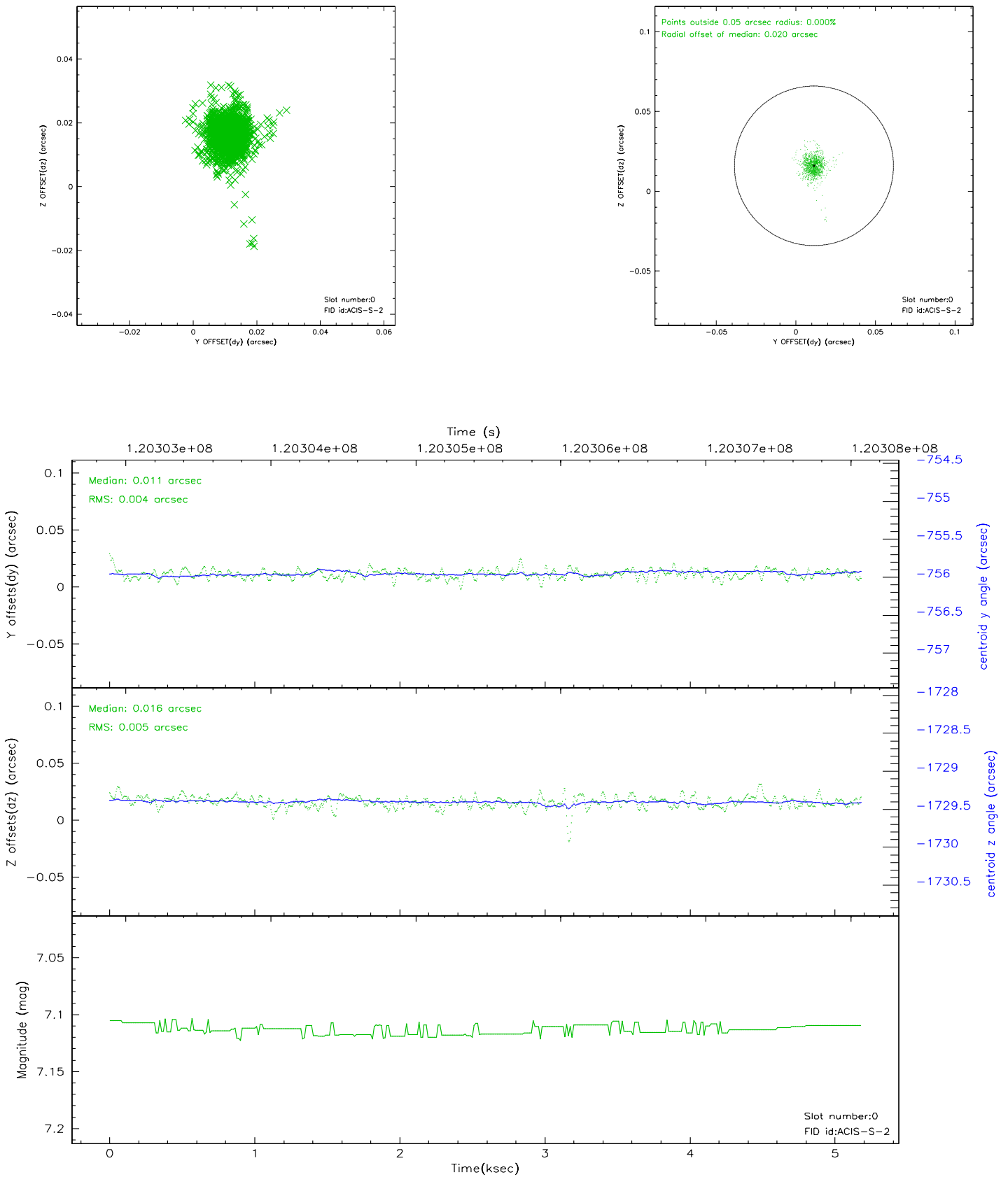


2.4.5 Slot 7

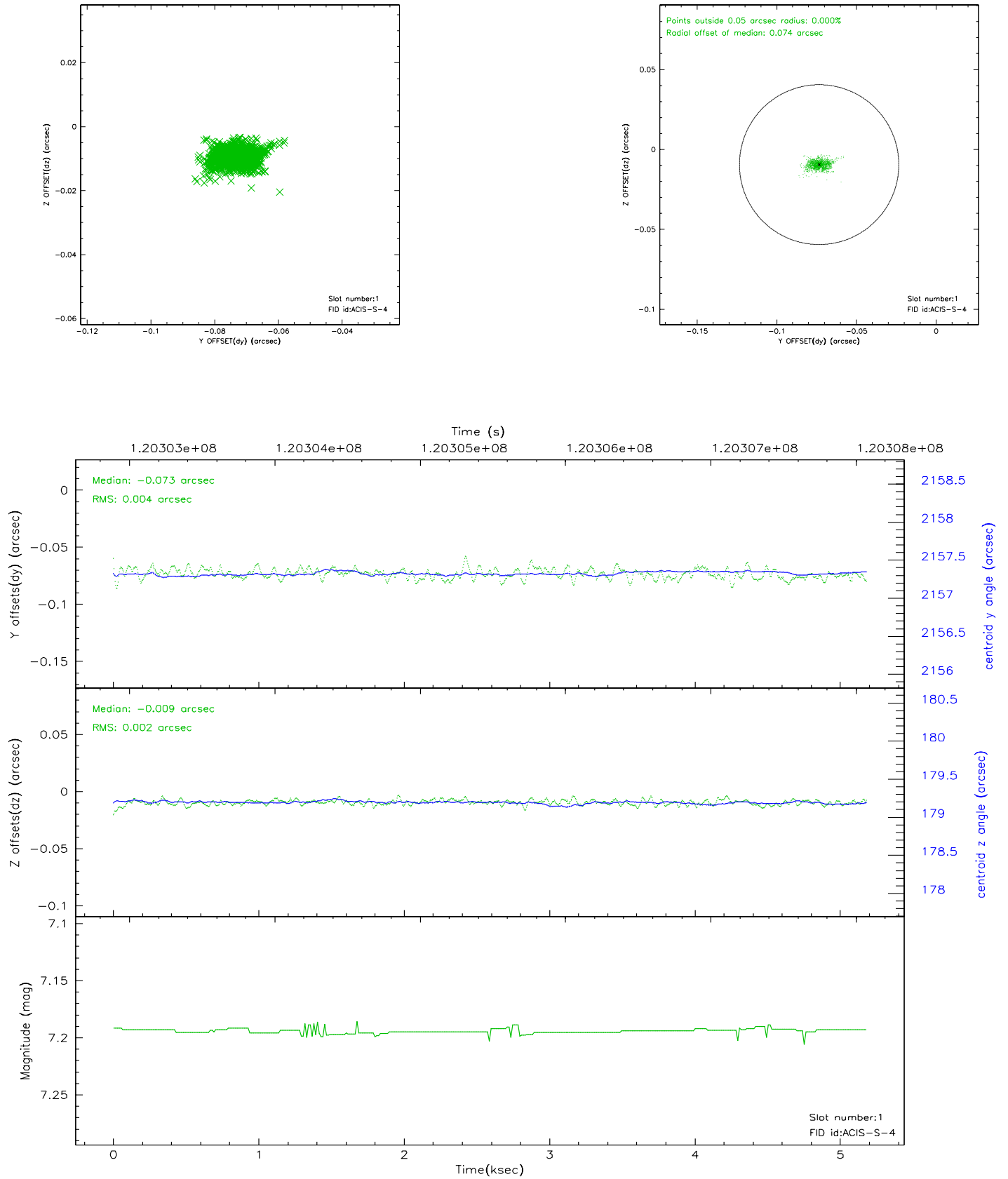


2.5 FID Slots

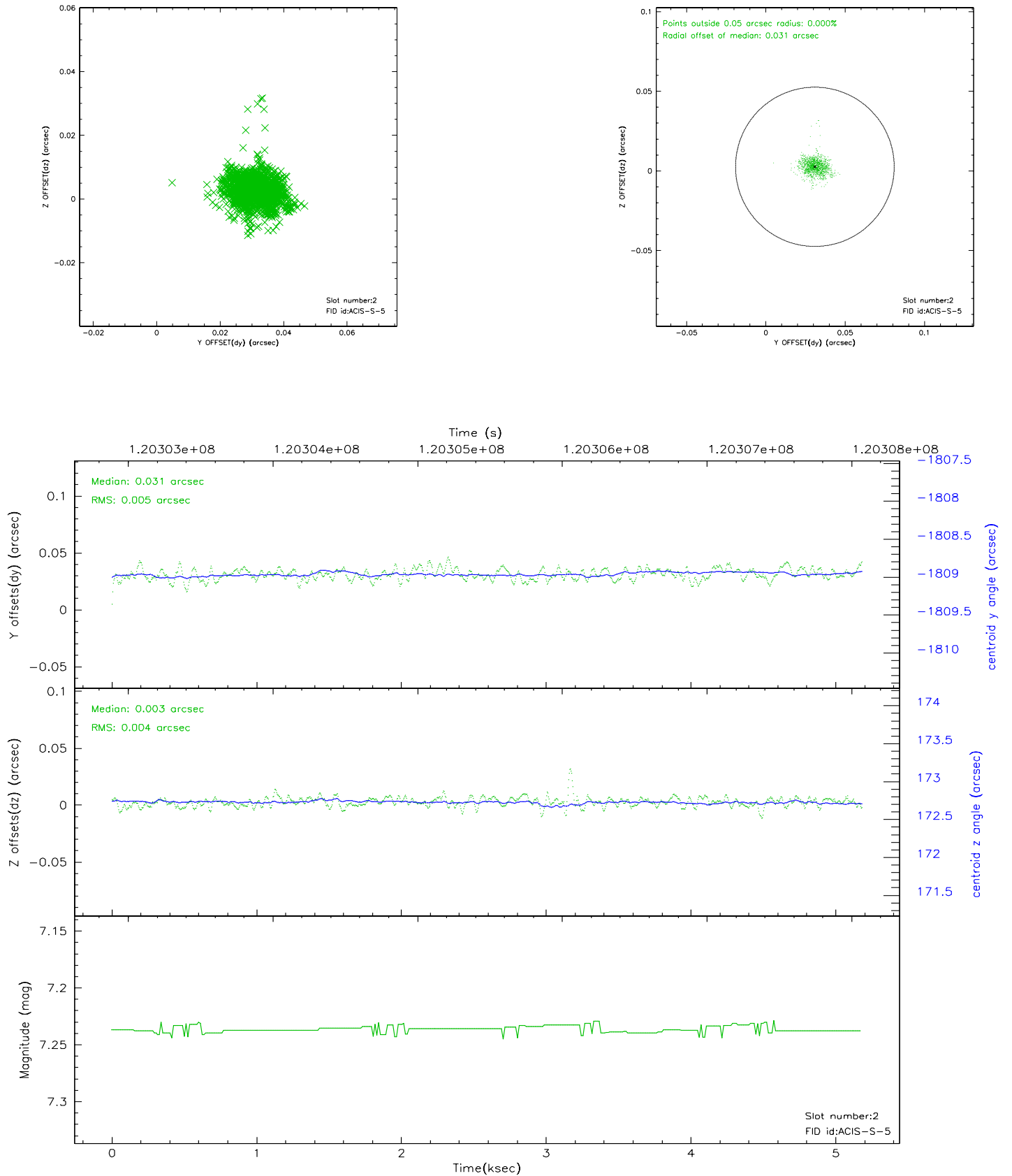
2.5.1 Slot 0



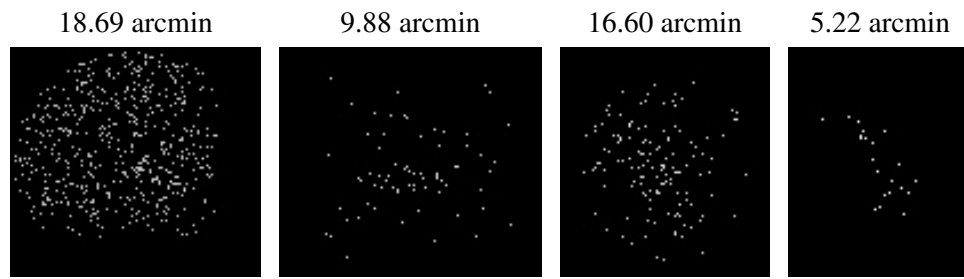
2.5.2 Slot 1



2.5.3 Slot 2



3 Point Sources



A Summary

A.1 Status

V&V Scientist	Jen Lauer
V&V Date (YYYY-MM-DD)	2007.01.11
V&V Edition	1
V&V Disposition and Status	OK
V&V Charge Time	4.758

A.2 Comments