

V&V Reference Report

L2 ASCDS Version : 7.6.9

Observation 1029 - L2 Version 001
Chandra X-Ray Center

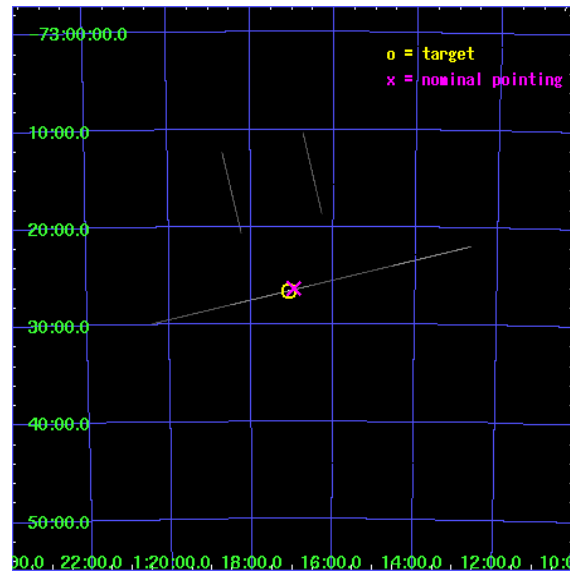
L2 Processing Date : Nov 14 2006

Contents

1	Front	2
2	OBI	3
2.1	OBI	3
2.1.1	Images	3
2.1.2	Bias	3
2.1.3	Parameters	4
2.1.4	Events	4
2.2	Compared Parameters	5
2.3	Aspect	6
2.4	Star Slots	9
2.4.1	Slot 3	9
2.4.2	Slot 4	10
2.4.3	Slot 5	11
2.4.4	Slot 6	12
2.4.5	Slot 7	13
2.5	FID Slots	14
2.5.1	Slot 0	14
2.5.2	Slot 1	15
2.5.3	Slot 2	16
A	Summary	17
A.1	Status	17
A.2	Comments	17

1 Front

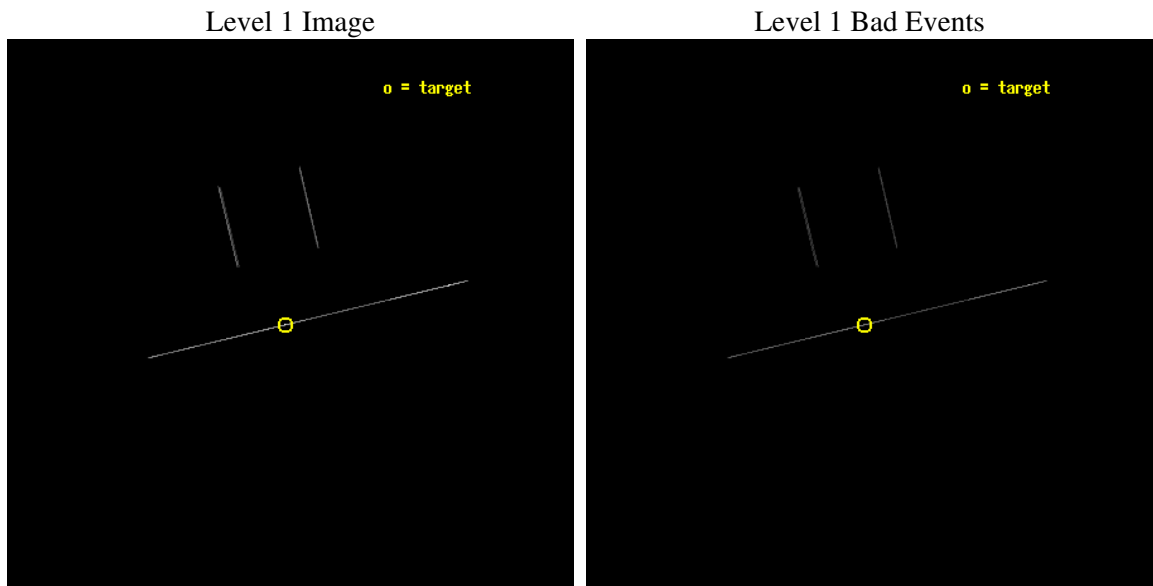
seq_num	400107
obs_id	1029
title	HIGH RESOLUTION UV/X-RAY SPECTROSCOPY OF SMC X-1
observer	Dr. Saeqa Vrtilek
object	SMC X-1
ra_targ	19.271667
dec_targ	-73.442944
ra_nom	19.240082215975
dec_nom	-73.438969633419
roll_nom	166.56460164345
revision	3
ontime	6120.0
livetime	6096.09375
ontime2	6120.0
ontime3	6120.0
ontime5	6120.0
ontime6	6120.0
ontime7	6120.0
ontime8	6118.5419580042
l2events	75496



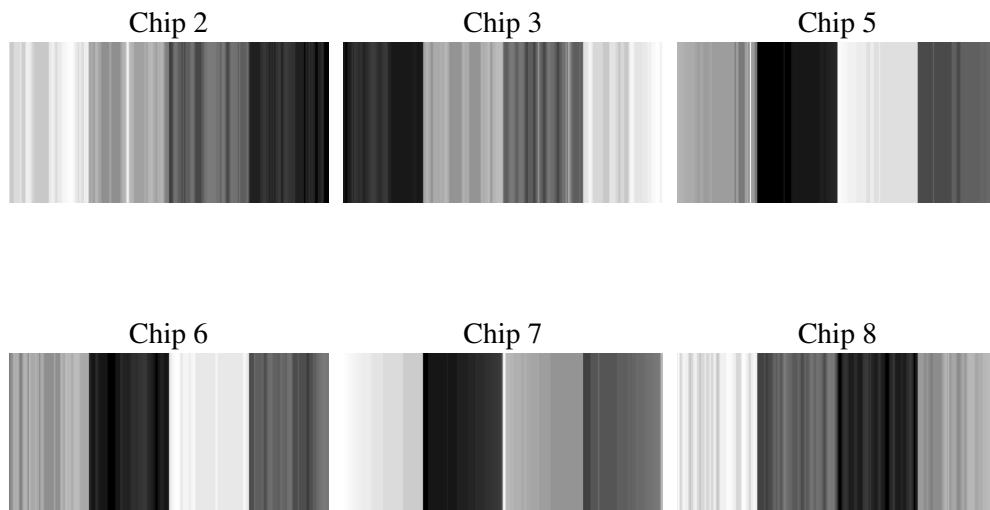
2 OBI

2.1 OBI

2.1.1 Images



2.1.2 Bias



2.1.3 Parameters

obi_num	2
ascdsver	7.6.9
caldsver	3.2.4
date	2006-11-14T18:51:04
revision	3

sched_exp_time	6000.000000
ontime	7497.3002494872
ontime2	7489.949271664
ontime3	7527.9391768724
ontime5	7500.2194855362
ontime6	7507.514947325
ontime7	7497.3002494872
ontime8	7488.5453891158
l1events	135179

2.1.4 Events

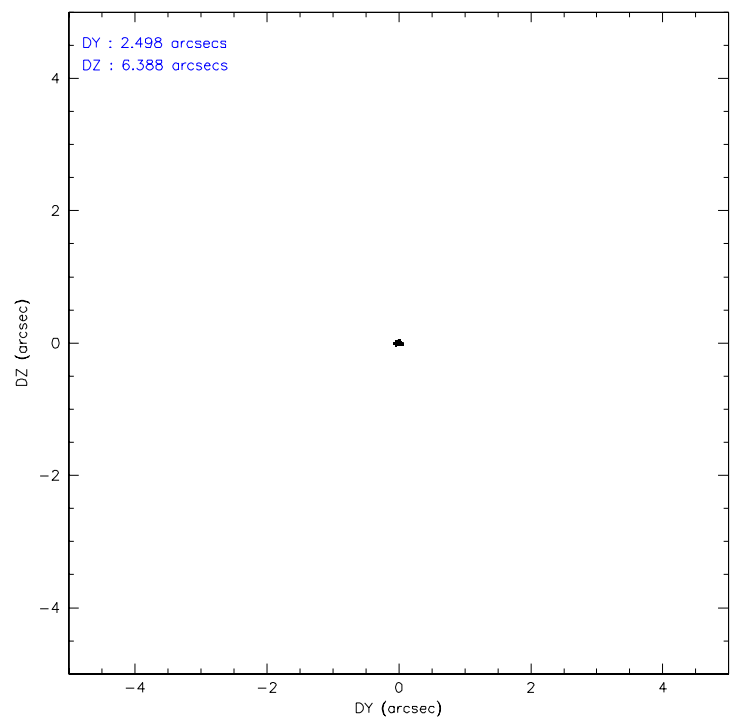
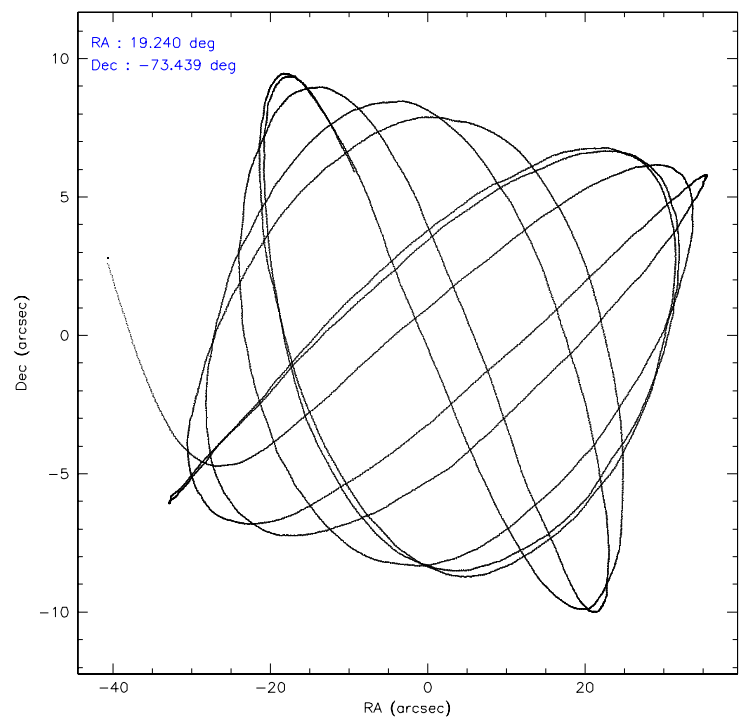
	ccd 2	ccd 3	ccd 5	ccd 6	ccd 7	ccd 8
level 1 events	9264	10468	46816	10196	38849	19586
rejected events	2947	3463	11599	3501	9883	5841
rejected %	31%	33%	24%	34%	25%	29%

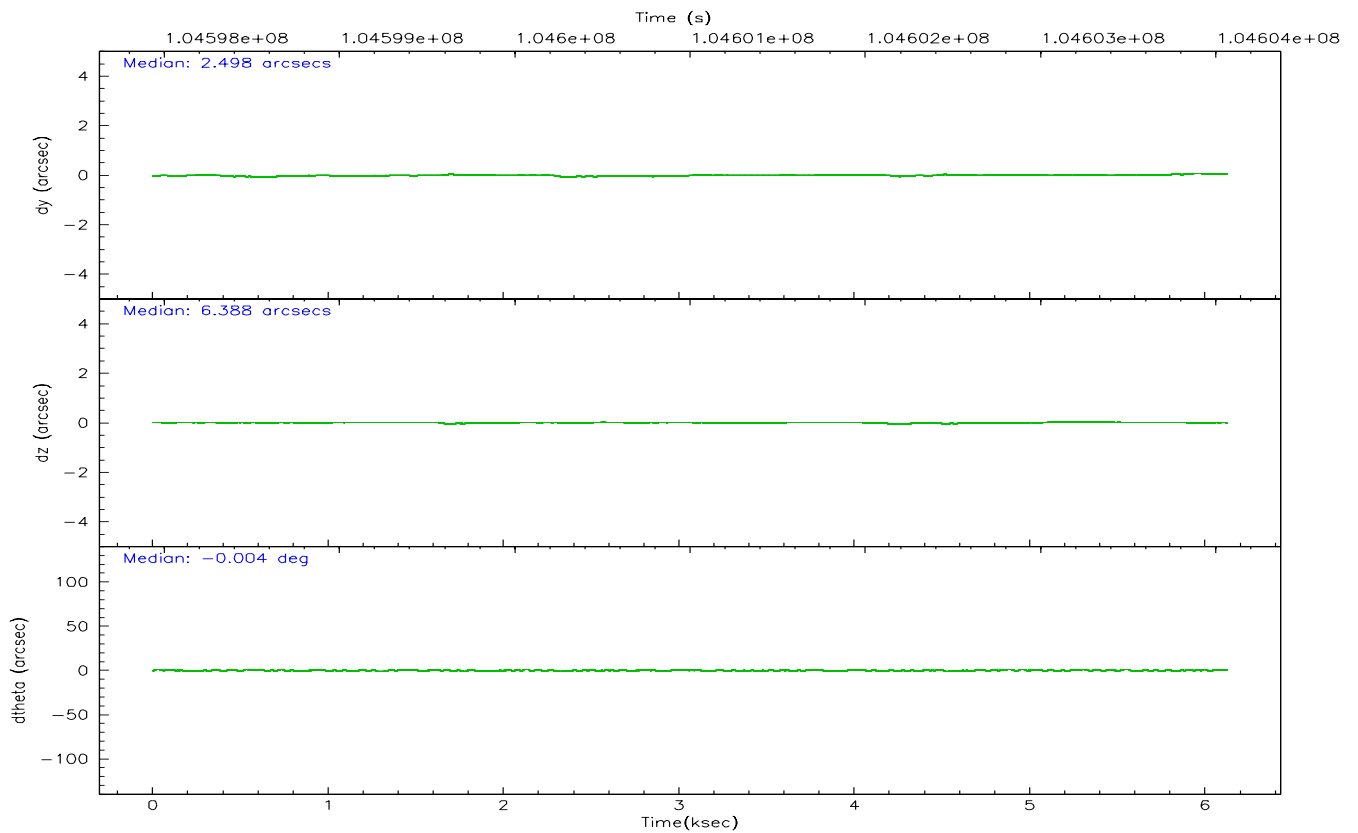
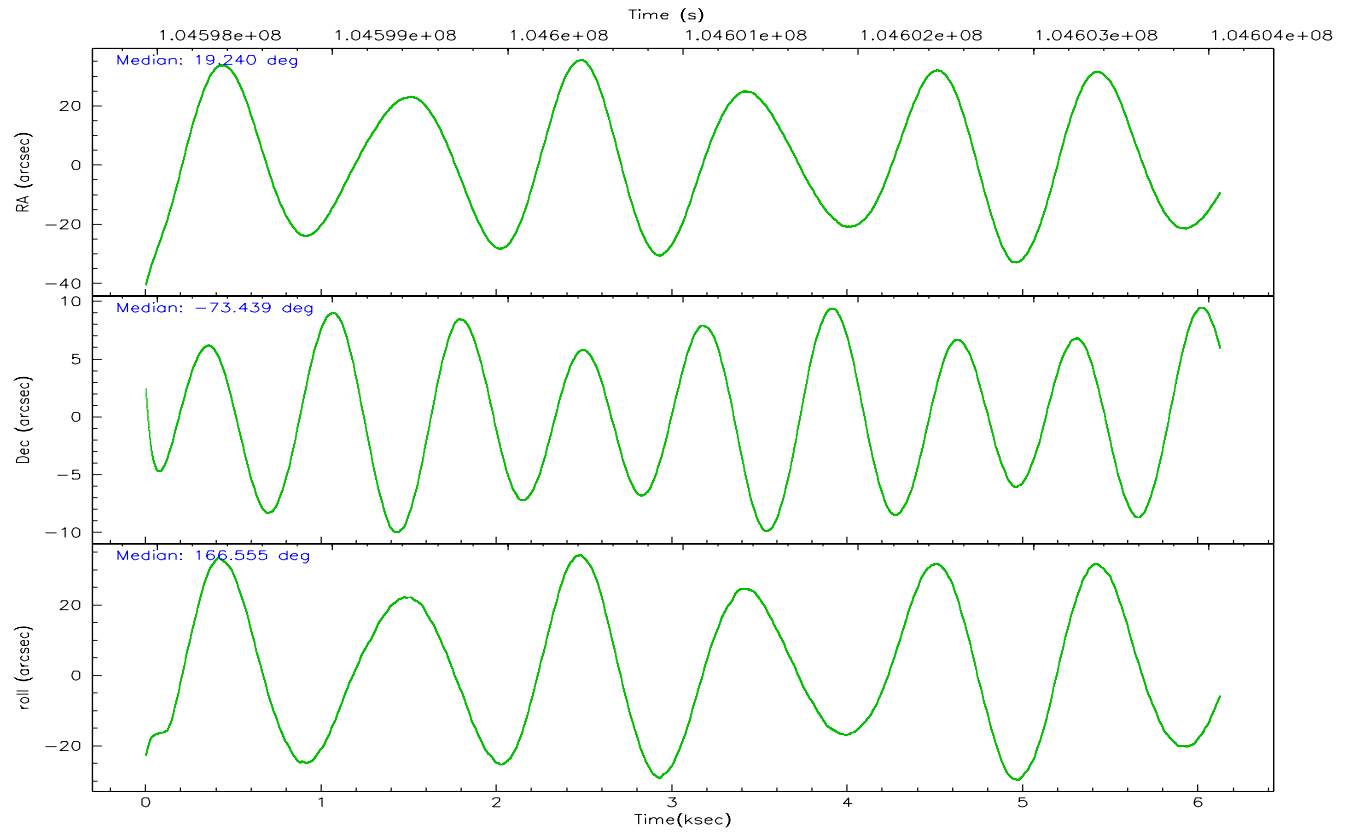
	ccd 2	ccd 3	ccd 5	ccd 6	ccd 7	ccd 8
grade 0 events	1014	1084	11786	1007	3995	3185
	10%	10%	25%	9%	10%	16%
grade 1 events	36	31	42	31	60	63
	0%	0%	0%	0%	0%	0%
grade 2 events	2890	3037	11140	3039	8830	5160
	31%	29%	23%	29%	22%	26%
grade 3 events	1122	1563	668	1203	1993	2184
	12%	14%	1%	11%	5%	11%
grade 4 events	1098	1260	685	1123	2016	2082
	11%	12%	1%	11%	5%	10%
grade 5 events	1535	1776	3576	1892	4788	2577
	16%	16%	7%	18%	12%	13%
grade 6 events	1569	1717	18919	1901	17167	4335
	16%	16%	40%	18%	44%	22%
grade 7 events	0	0	0	0	0	0
	0%	0%	0%	0%	0%	0%

2.2 Compared Parameters

Parameter	Planned	Actual	Parameter	Planned	Actual
Instrument	ACIS	ACIS	Obspar format version number	6	6
Detector	ACIS-235678	ACIS-235678	Obspar file type	PREDICTED	ACTUAL
Grating	NONE	NONE	Obspar update status	NONE	UPDATED
Data mode	CC33_FAINT	CC33_FAINT	Number of optional ACIS chips dropped	0	0
Observation mode	POINTING	POINTING	On-chip summing requested	N	N
Pointing RA	19.331683	19.24008221597465	Subarray requested	NONE	NONE
Pointing Dec	-73.430959	-73.43896963341939	Alternating exposures requested	N	N
Pointing Roll	166.495766	166.5646016434458	Primary exposure time	0.000000	0
Window start time	104596877.184000	104596877.184000			
Window stop time	104606173.184000	104606173.184000			
SIM focus pos (mm)	-0.684267	-0.6828225247311905			
SIM defocus (mm)	0	0.001444936568705701			
SIM translation stage pos (mm)	-190.132523	-190.1425803651734			
SIM translation stage offset (mm)	0	0.01005778216563158			
Phase constraints	Y	Y			
Phase period	3.892000	3.892000			
Phase epoch	50141.466800	50141.466800			
Phase start	0.000000	0.000000			
Phase end	0.800000	0.800000			
Phase start error	0.050000	0.050000			
Phase end error	0.050000	0.050000			
Observation start time	104598064.184000	104596480.7459			
Observation start date	2001-04-25T15:00:00	2001-04-25T14:34:40			
Observation end time	104604064.184000	104604508.54621			
Observation end date	2001-04-25T16:40:00	2001-04-25T16:48:28			

2.3 Aspect



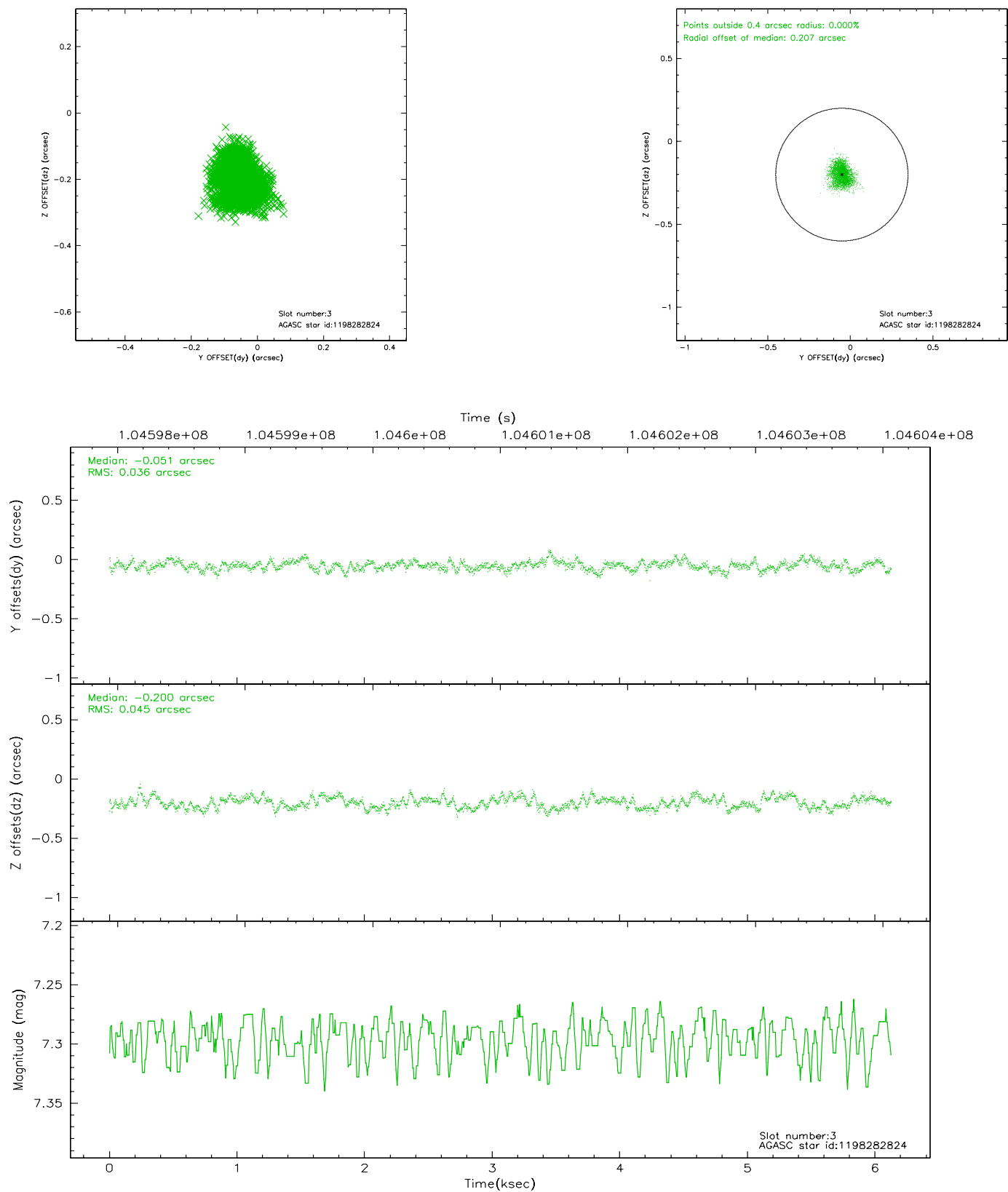


Slot Statistics

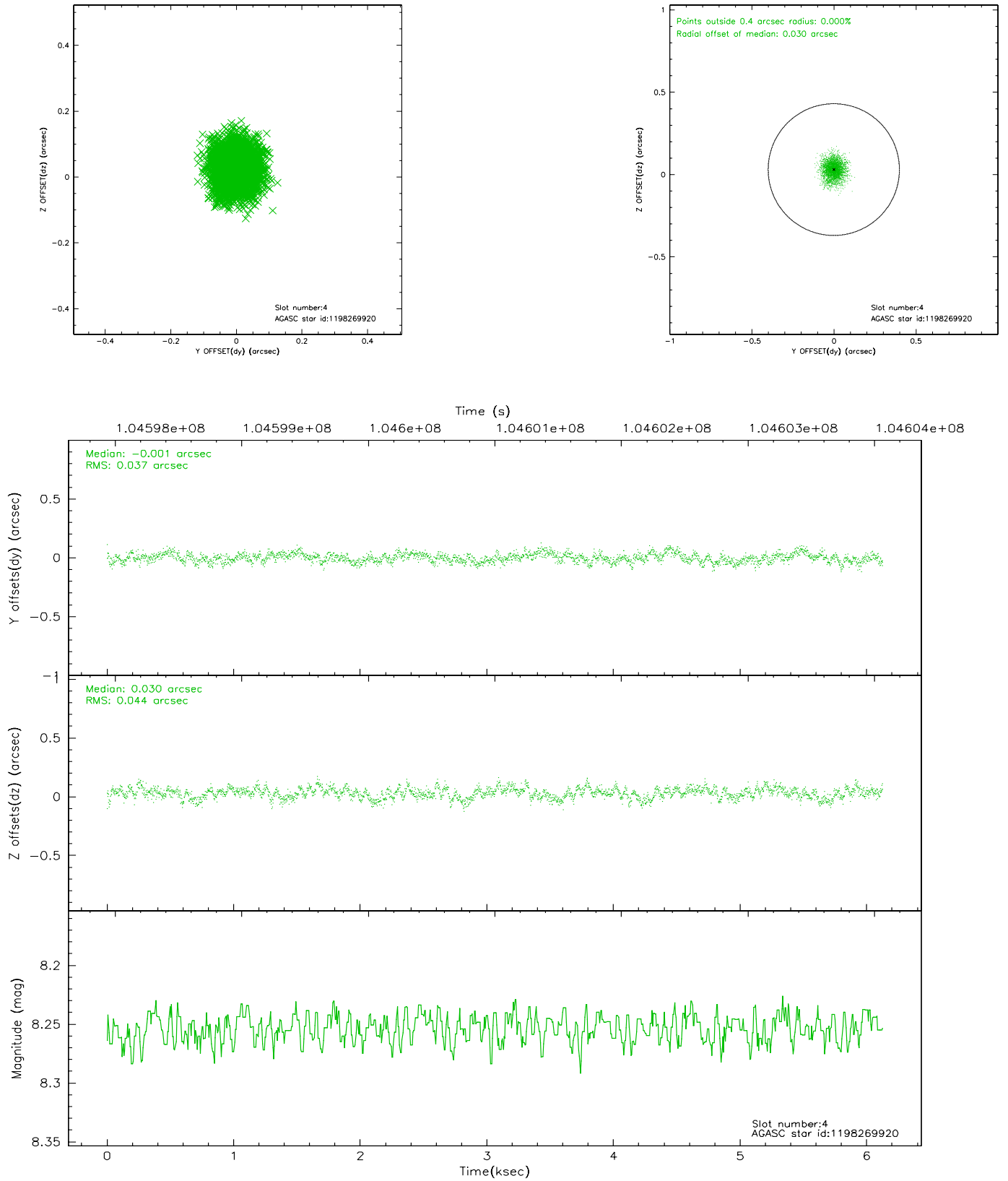
slot	status	id	mag	n_pts	med_dy	med_dz	dr1	dr2	ra	dec	mean_y	mean_z
0	FID	ACIS-S-3	7.36	1494	-0.084	-0.062	0.007	0.012	0.000000	0.000000	58.01	-1856.61
1	FID	ACIS-S-4	7.20	1494	-0.042	0.074	0.005	0.009	0.000000	0.000000	2158.23	180.00
2	FID	ACIS-S-5	7.24	1494	0.098	-0.002	0.006	0.009	0.000000	0.000000	-1806.62	174.76
3	GUIDE	1198282824	7.30	2989	-0.051	-0.200	0.062	0.095	18.044095	-73.907062	845.01	1979.85
4	GUIDE	1198269920	8.25	2985	-0.001	0.030	0.062	0.101	20.316466	-73.033728	-673.81	-1623.32
5	GUIDE	1198282880	9.59	2985	0.015	-0.018	0.099	0.167	17.772623	-73.017886	1935.62	-1042.83
6	GUIDE	1198283120	9.34	2985	-0.024	0.079	0.072	0.123	18.724531	-73.257934	757.26	-455.80
7	GUIDE	1198264832	9.52	2988	0.065	0.102	0.149	0.242	20.353668	-72.974637	-665.76	-1840.25

2.4 Star Slots

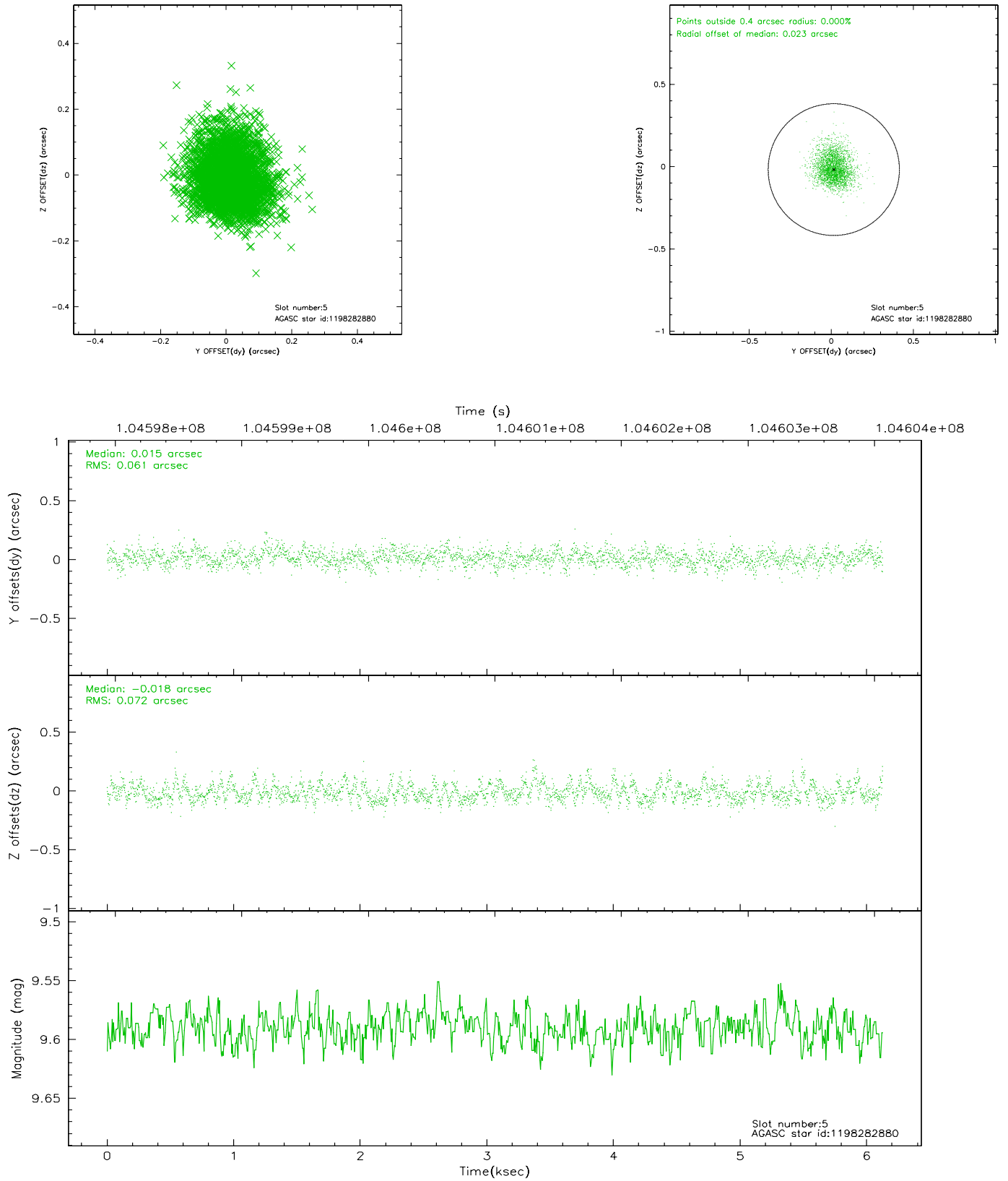
2.4.1 Slot 3



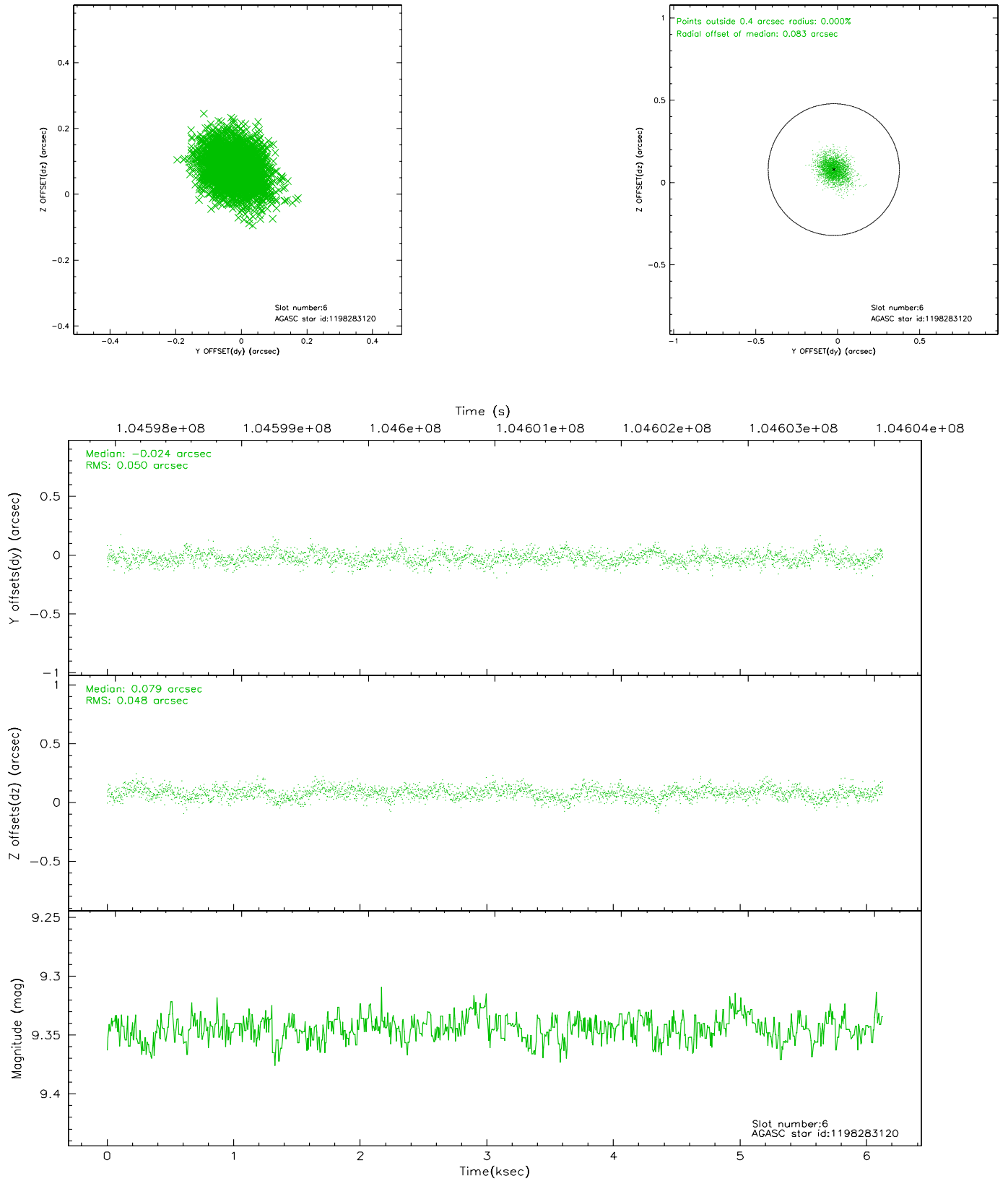
2.4.2 Slot 4



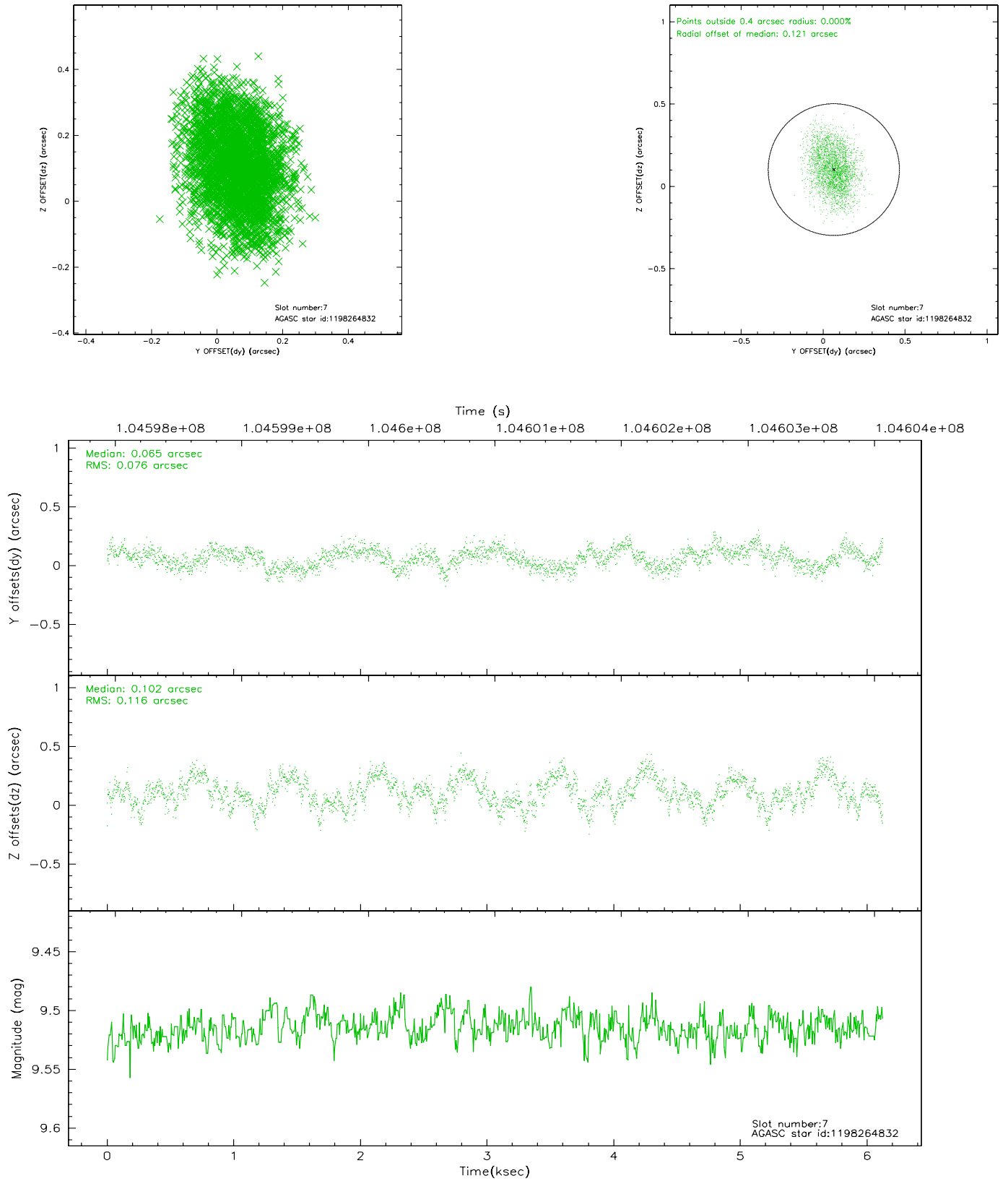
2.4.3 Slot 5



2.4.4 Slot 6

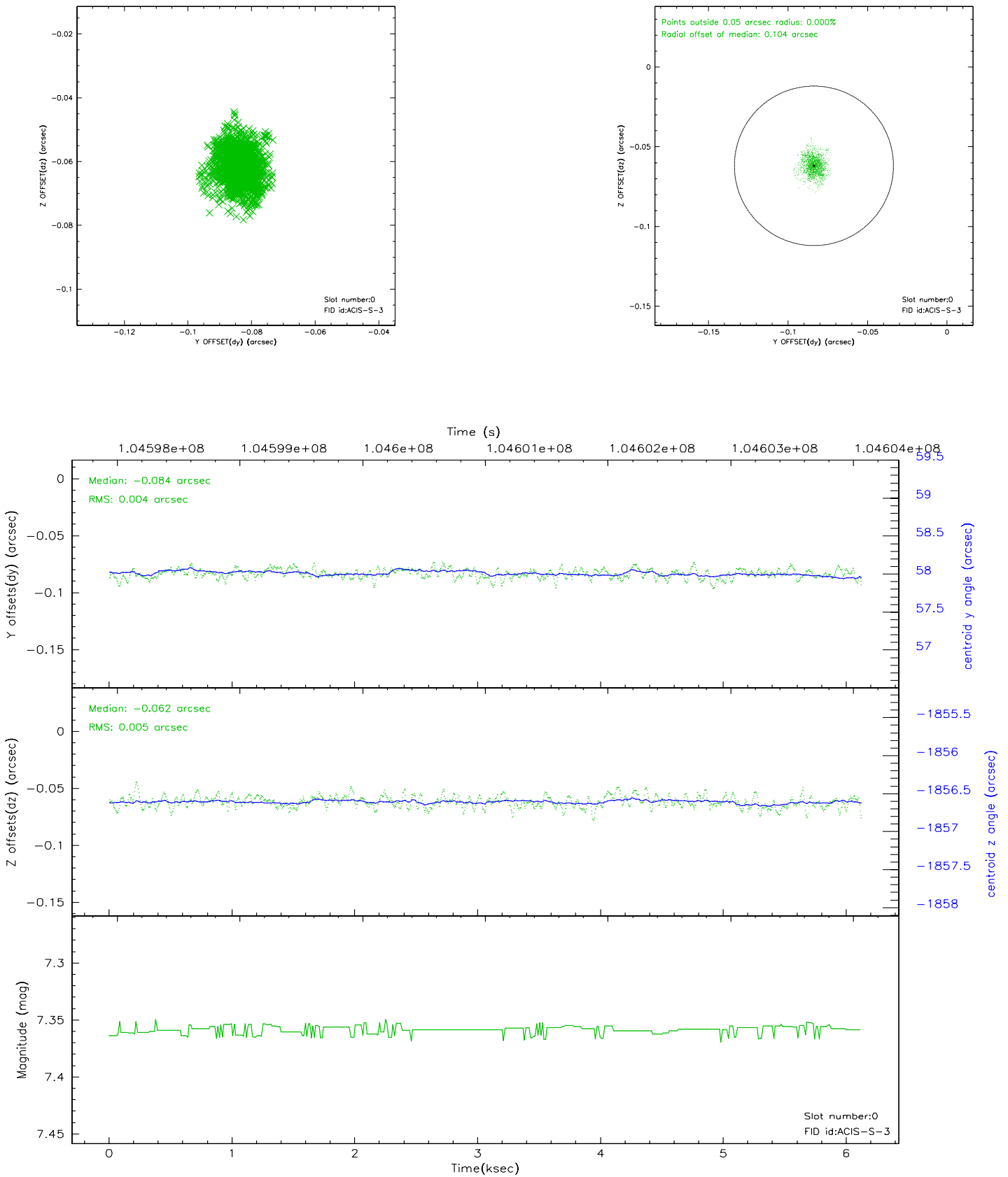


2.4.5 Slot 7

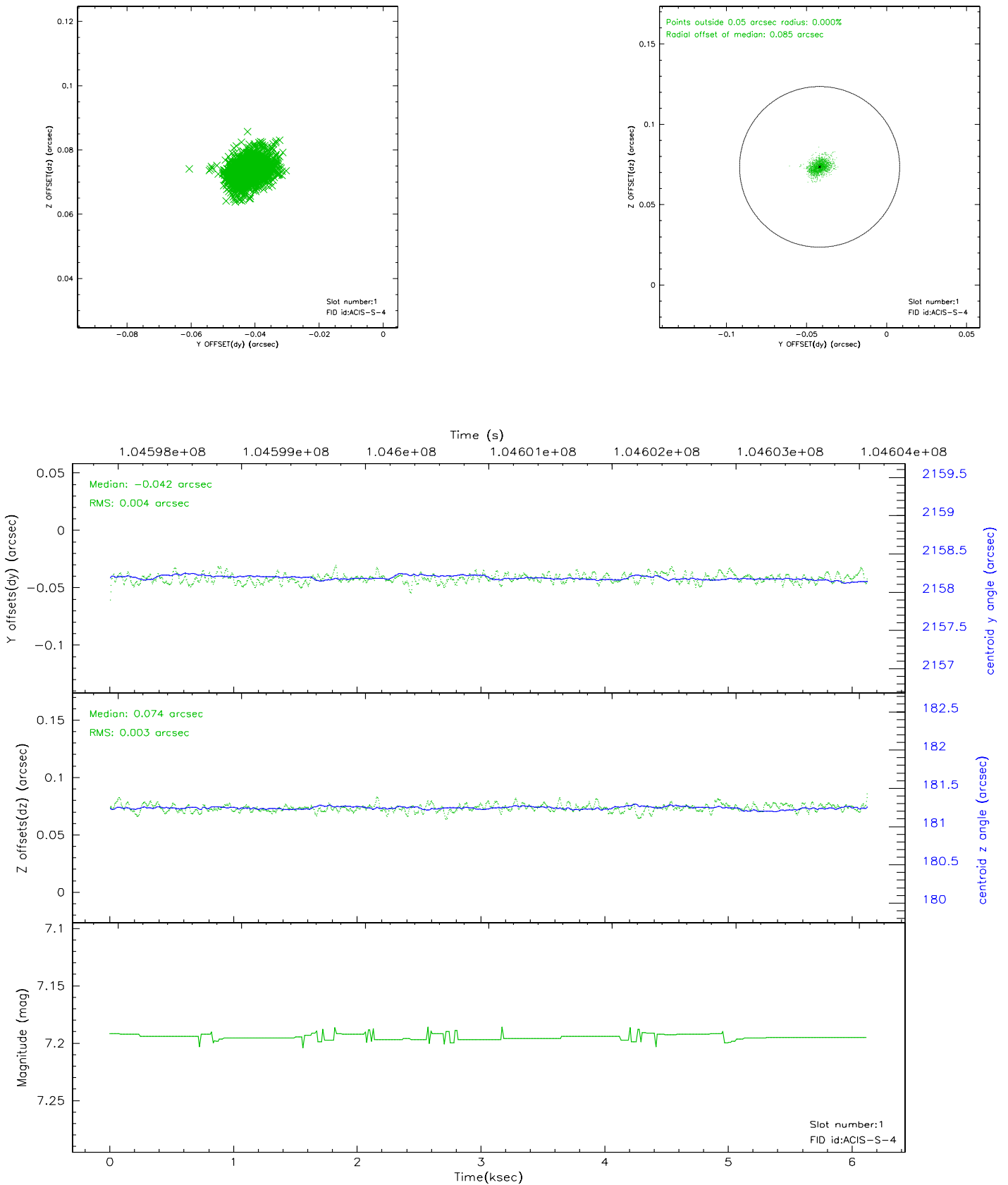


2.5 FID Slots

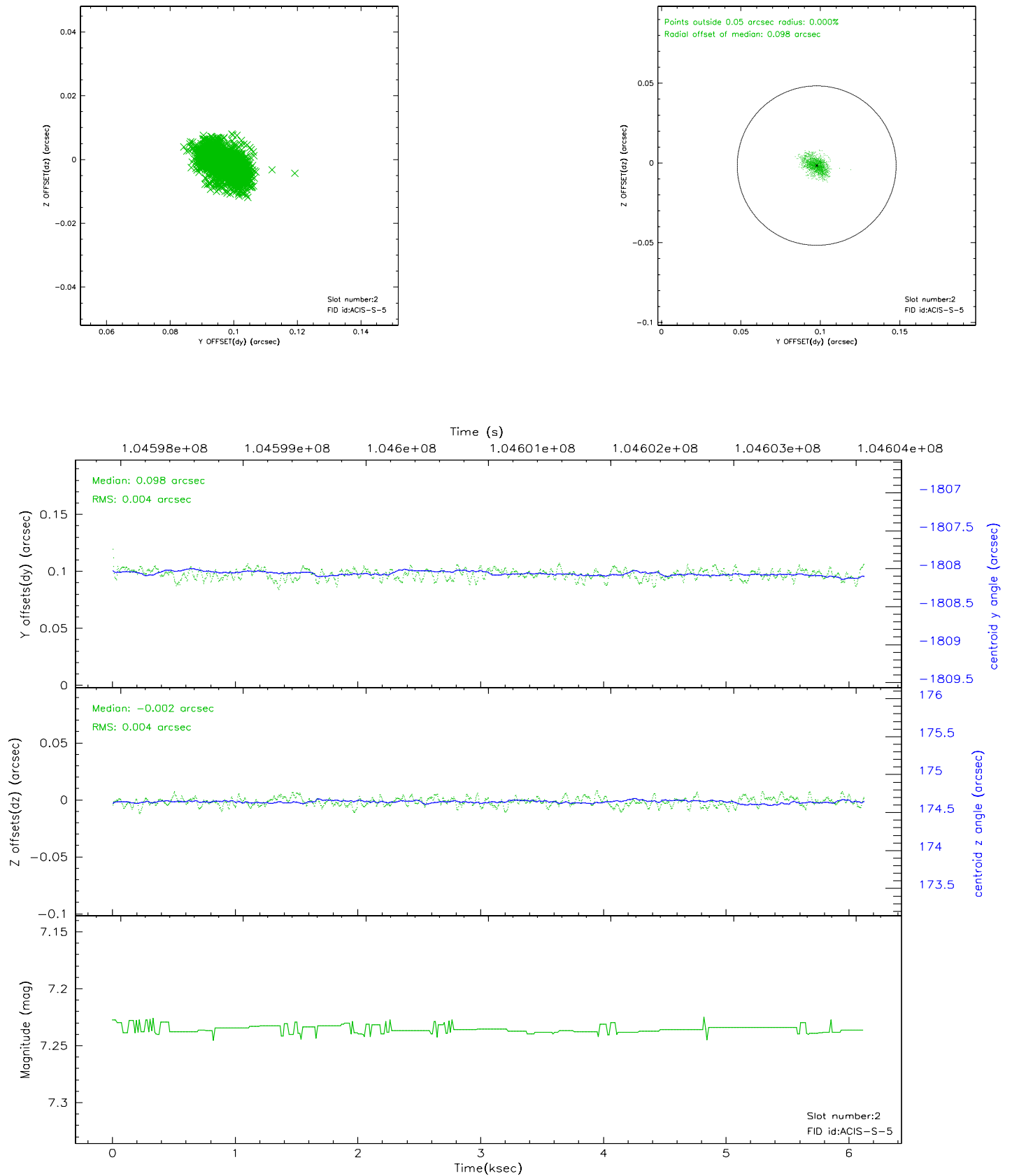
2.5.1 Slot 0



2.5.2 Slot 1



2.5.3 Slot 2



A Summary

A.1 Status

V&V Scientist	David Huenemoerder
V&V Date (YYYY-MM-DD)	2006.11.15
V&V Edition	1
V&V Disposition and Status	OK
V&V Charge Time	6.123

A.2 Comments

Phase Constraint: PERIOD 93.415 H AND ZERO-PHASE JD2451854.747524
REQUESTED PHASE = 0.70 to .79 ACTUAL PHASE = 0.7728 TO .7911