

V&V Reference Report

L2 ASCDS Version : 8.4.5

Observation 2504 - L2 Version 3
Chandra X-Ray Center

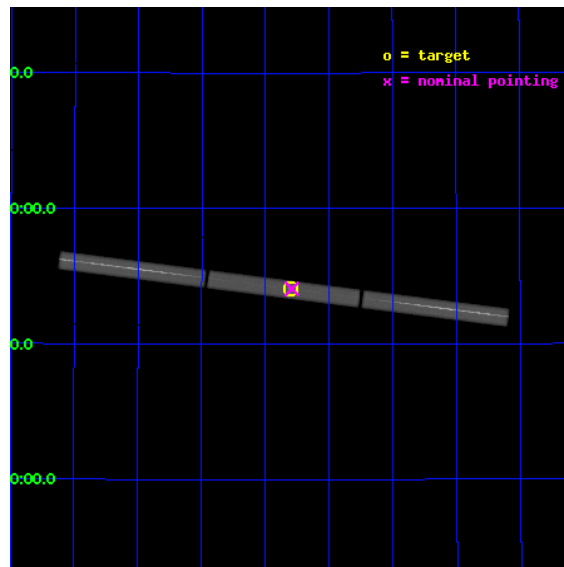
L2 Processing Date : Sep 21 2012

Contents

1	Front	2
2	OBI	3
2.1	OBI	3
2.1.1	Images	3
2.1.2	Parameters	4
2.1.3	Events	4
2.2	Compared Parameters	5
2.3	Aspect	6
2.4	Star Slots	9
2.4.1	Slot 3	9
2.4.2	Slot 4	10
2.4.3	Slot 5	11
2.4.4	Slot 6	12
2.4.5	Slot 7	13
2.5	FID Slots	14
2.5.1	Slot 0	14
2.5.2	Slot 1	15
2.5.3	Slot 2	16
3	Gratings	17
3.1	LETG Arm	17
A	Summary	19
A.1	Status	19
A.2	Comments	19

1 Front

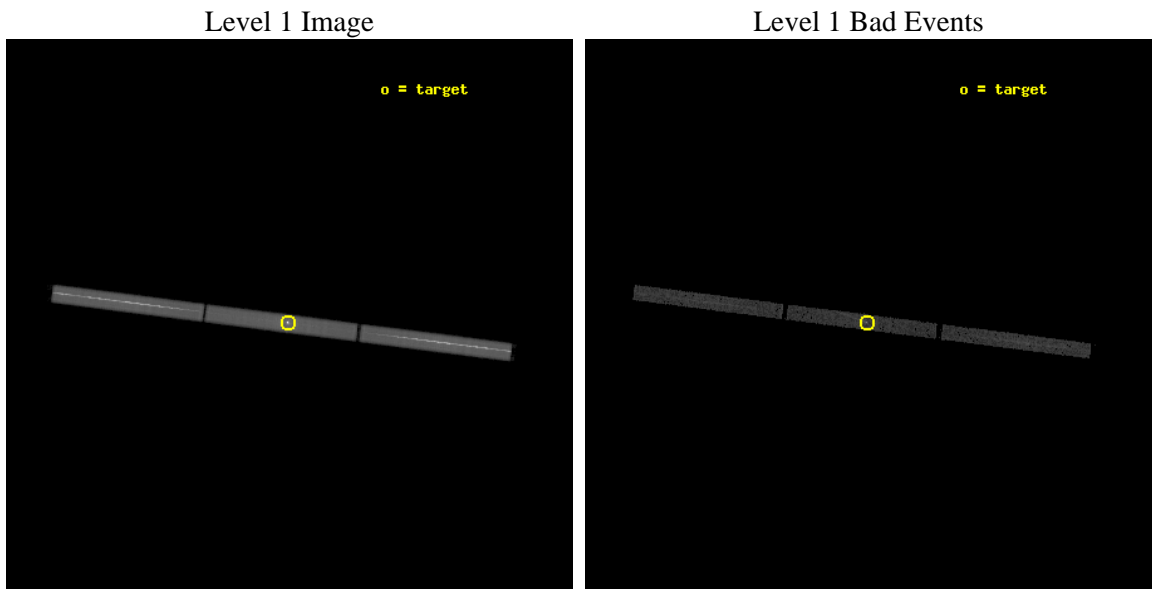
seq_num	300057	Sequence number
obs_id	2504	Observation id
title	WZ SGE IN OUTBURST TEN YEARS EARLY: I THE EUV EMISSION	Proposal ti
observer	Dr Peter Wheatley	Principal investigator
object	WZ SGE	Source name
ra_targ	301.900833	Observer's specified target RA [deg]
dec_targ	17.704167	Observer's specified target Dec [deg]
ra_nom	301.89591526789	Nominal RA [deg]
dec_nom	17.703781346385	Nominal Dec [deg]
roll_nom	187.15089305126	Nominal Roll [deg]
revision	3	Processing version of data
ontime	19954.957034081	[s]
livetime	19803.637735052	Ontime multiplied by DTCOR
l2events	1387459	Number of level 2 events



2 OBI

2.1 OBI

2.1.1 Images



2.1.2 Parameters

obi_num	0	Obi number	sched_exp_time	20100.000000	[s] Scheduled observation exposure time
ascdsver	8.4.5	Processing system revision	ontime	19954.957034081	[s]
caldsver	4.5.1.1	 	l1events	1829928	Number of level 1 events
date	2012-09-21T09:32:58	Date and time of file creation			
revision	3	Processing version of data			

2.1.3 Events

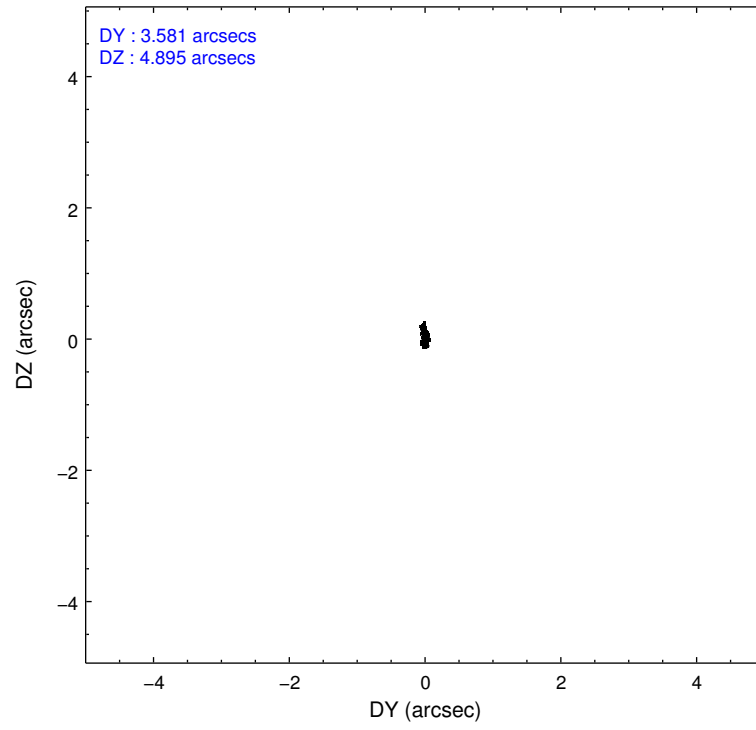
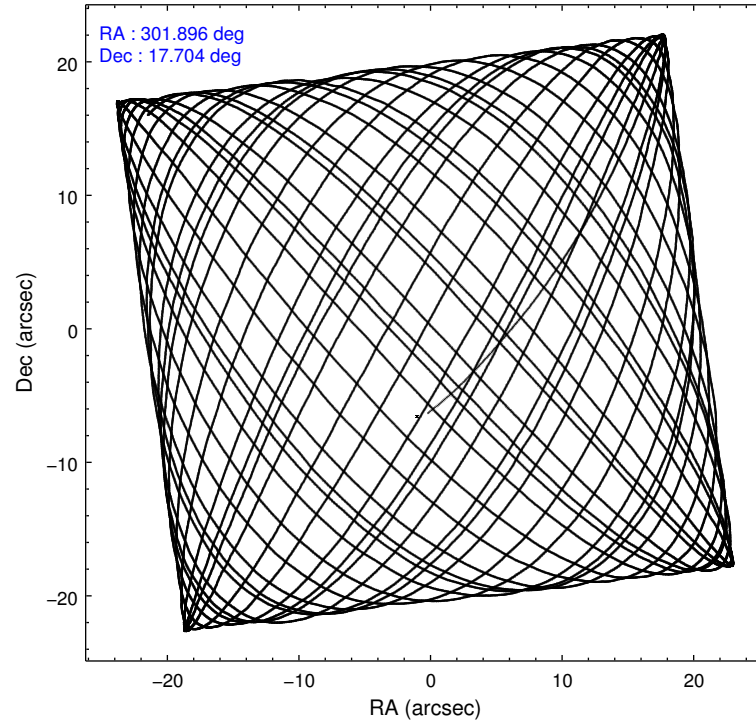
Level 1 Events

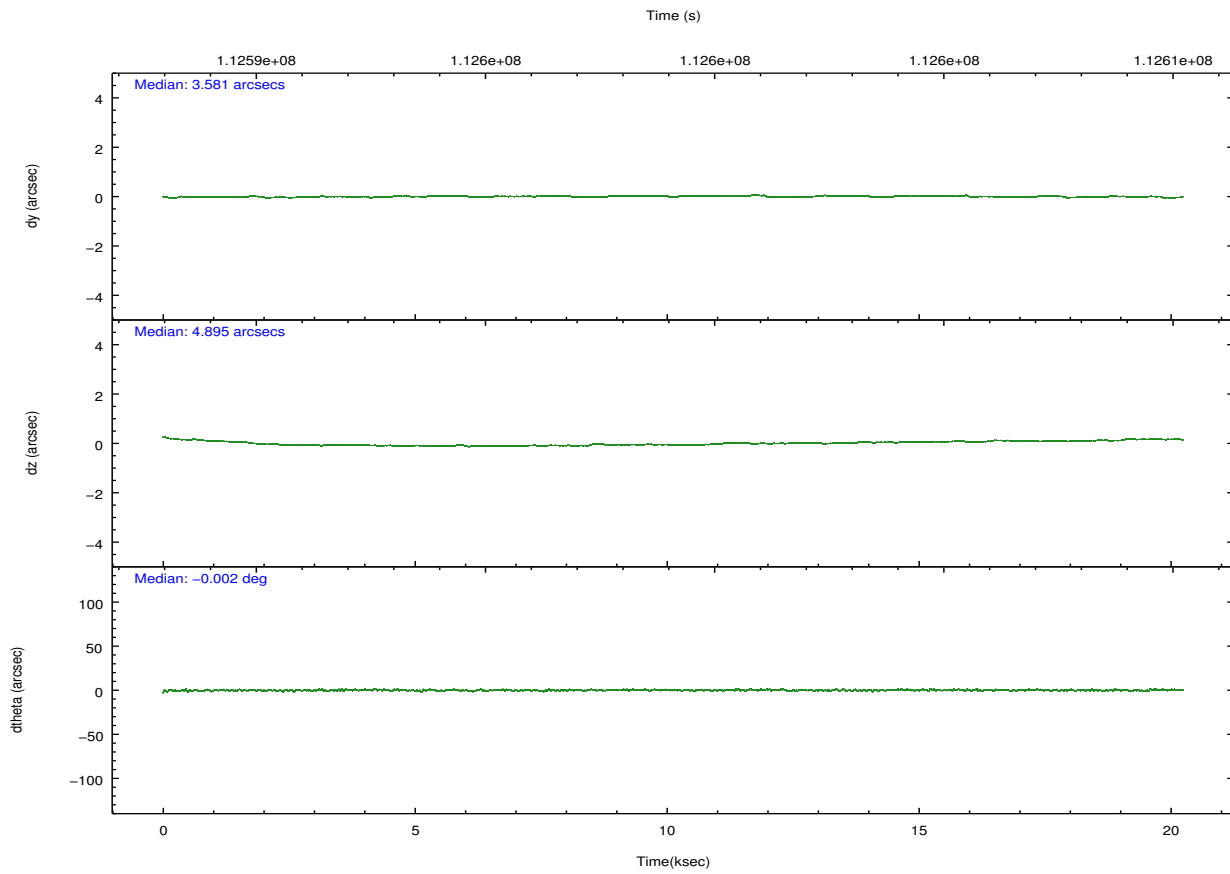
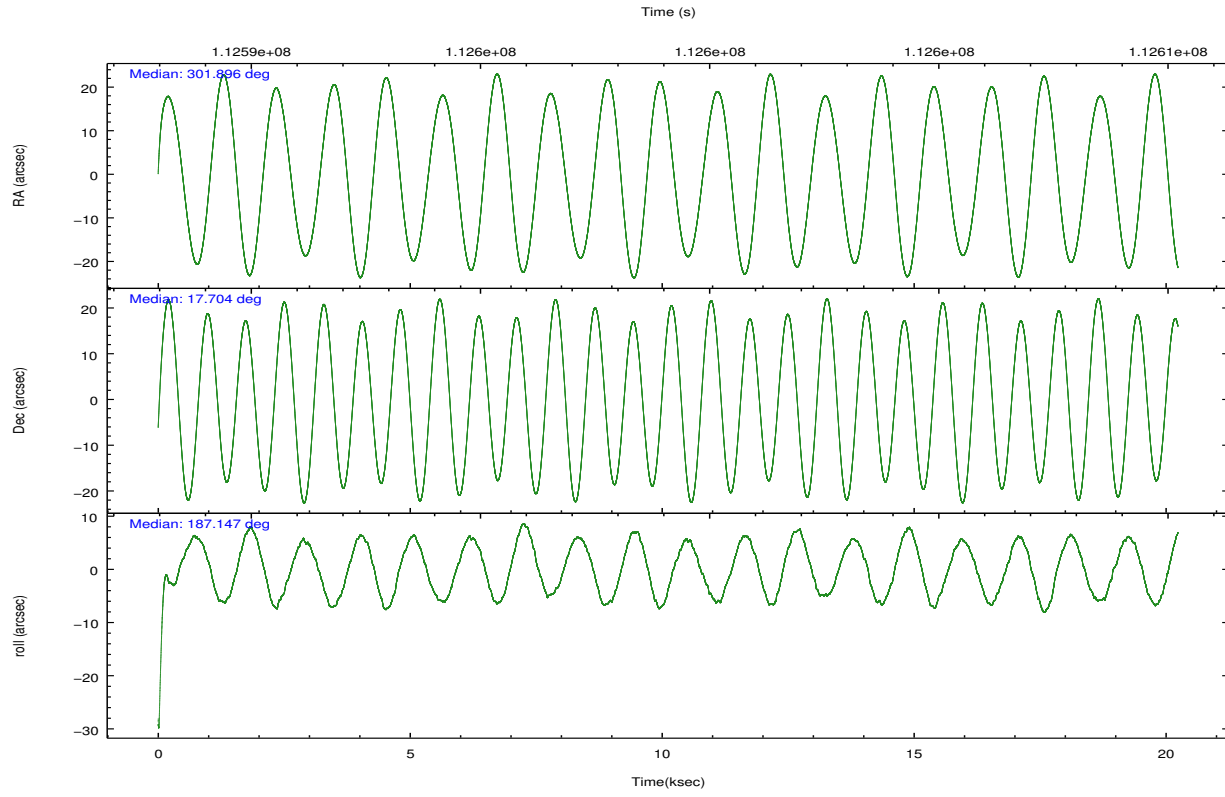
	segment 1	segment 2	segment 3
level 1 events	642388	543306	644234
rejected events	18787	21576	19045
rejected %	2%	3%	2%

2.2 Compared Parameters

Parameter	Planned	Actual	Parameter	Planned	Actual
Instrument	HRC	HRC	Obspar format version number	7	7
Detector	HRC-S	HRC-S	Obspar file type	PREDICTED	ACTUAL
Grating	LETG	LETG	Obspar update status	NONE	UPDATED
Data mode	OBSERVING	OBSERVING			
Observation mode	POINTING	POINTING			
[deg] Pointing RA	301.918947	301.8959152678935			
[deg] Pointing Dec	17.722100	17.70378134638514			
[deg] Pointing Roll	187.076567	187.1508930512589			
[mm] SIM focus pos	-1.429586	-1.428180813131781			
[mm] SIM defocus	0.1037507710433287	0.1051558262725154			
[mm] SIM translation stage pos	250.455976	250.4635187648994			
[mm] SIM translation stage offset	0	-0.007540371344731511			
[s] Observation start time (MET)	112589110.184000	112588286.13243			
Observation start date	2001-07-27T02:44:06	2001-07-27T02:31:26			
[s] Observation end time (MET)	112609210.184000	112610019.72079			
Observation end date	2001-07-27T08:19:06	2001-07-27T08:33:39			

2.3 Aspect



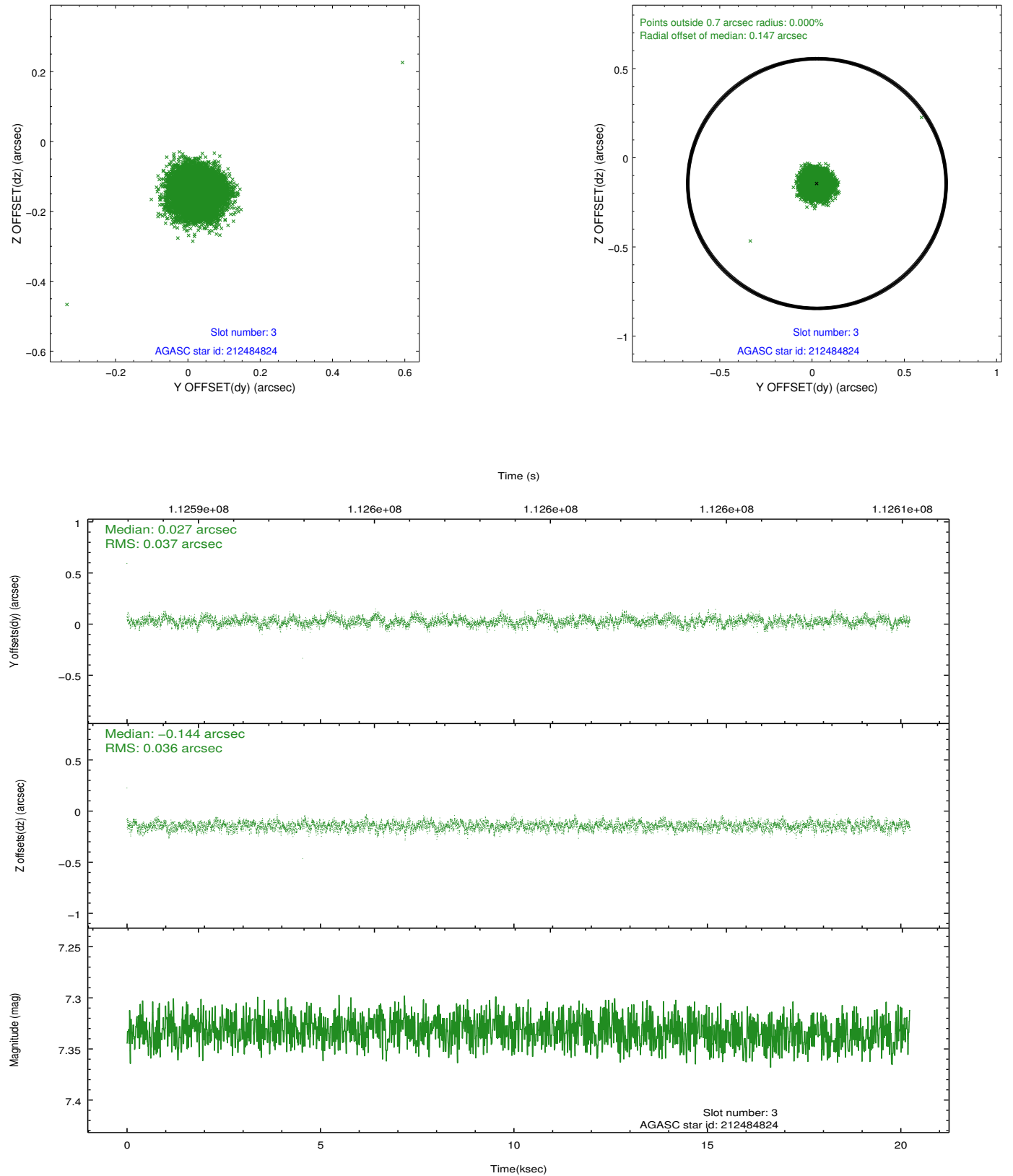


Slot Statistics

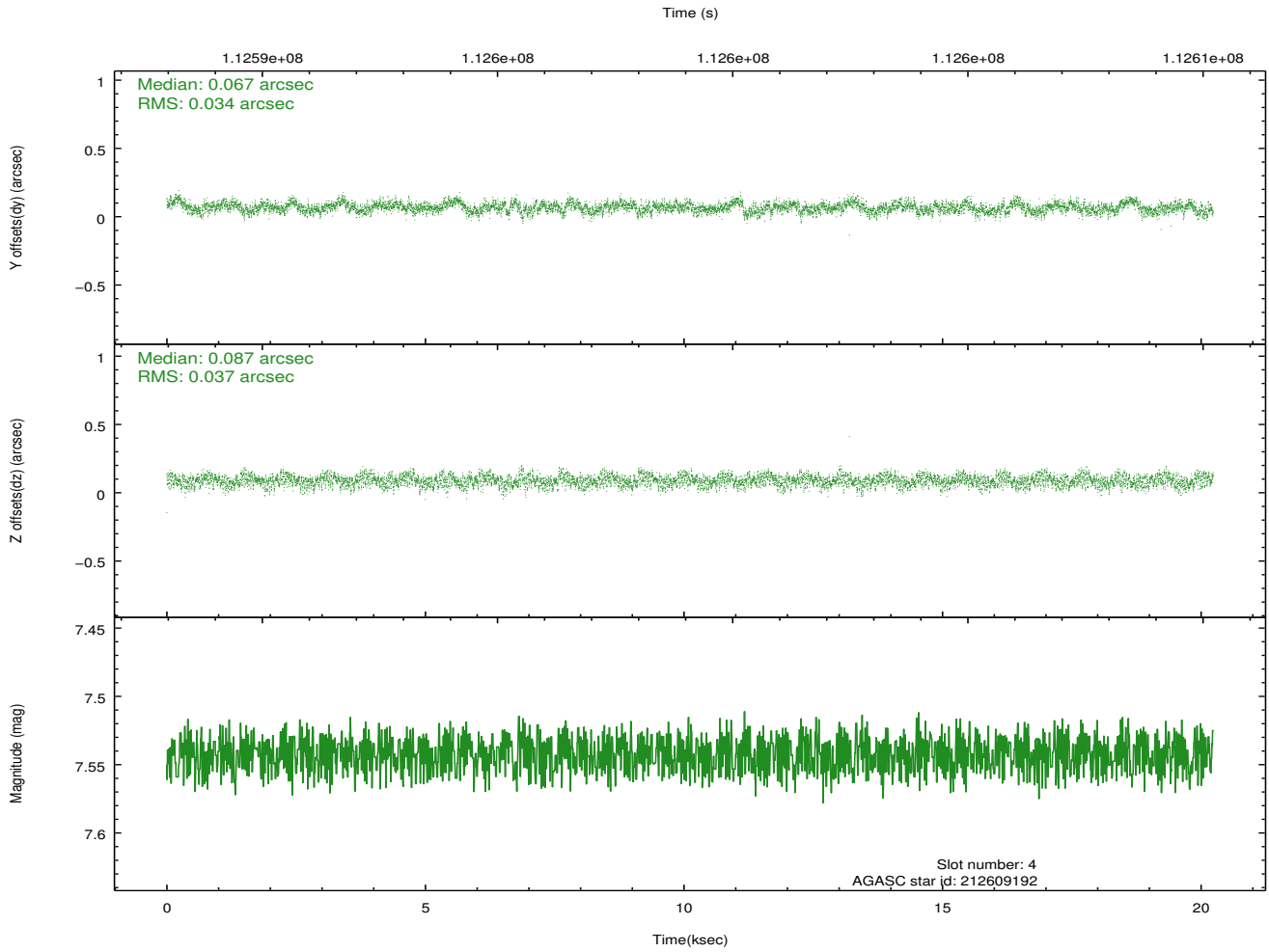
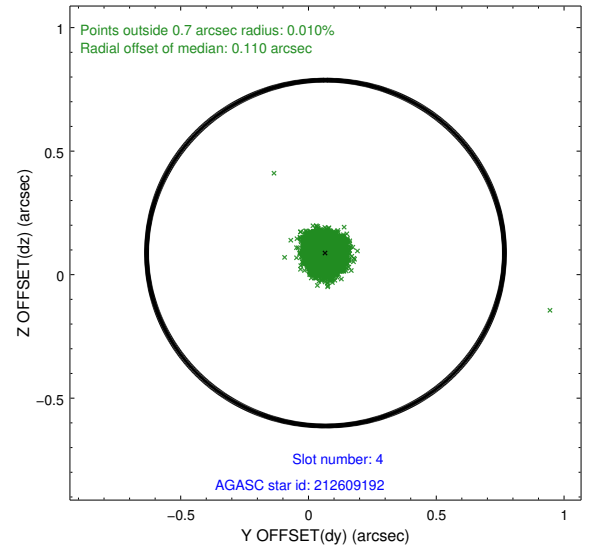
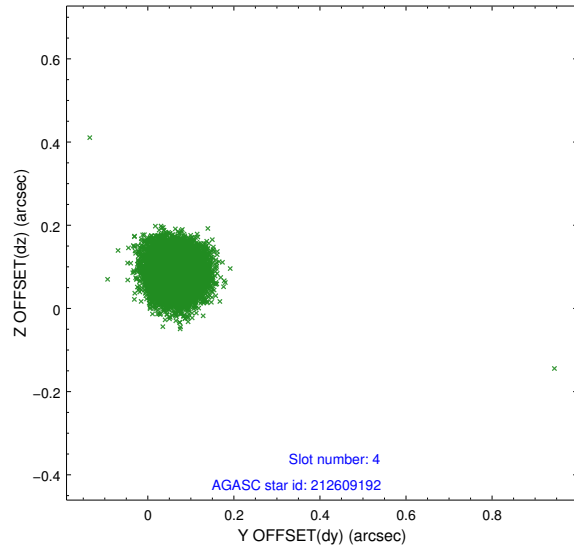
slot	status	id	mag	n_pts	med_dy	med_dz	dr1	dr2	ra	dec	mean_y	mean_z
0	FID	HRC-S-1	6.98	4936	0.170	-0.165	0.007	0.012	0.000000	0.000000	-1157.62	-453.35
1	FID	HRC-S-2	6.98	4936	0.074	-0.093	0.006	0.010	0.000000	0.000000	1241.73	-446.08
2	FID	HRC-S-3	7.01	4936	0.147	-0.044	0.007	0.013	0.000000	0.000000	-1160.09	576.21
3	GUIDE	212484824	7.33	9873	0.027	-0.144	0.055	0.086	301.436883	17.597881	1696.38	238.68
4	GUIDE	212609192	7.54	9872	0.067	0.087	0.053	0.083	302.504524	18.225864	-2210.69	-1555.52
5	GUIDE	212468336	7.60	9873	-0.039	0.149	0.061	0.099	301.479163	18.244435	1260.18	-2052.20
6	GUIDE	212612568	8.44	9872	0.132	-0.114	0.089	0.136	302.576625	17.147609	-1991.00	2327.62
7	GUIDE	212475304	7.93	9871	-0.185	0.023	0.047	0.079	301.318620	17.280146	2242.97	1322.69

2.4 Star Slots

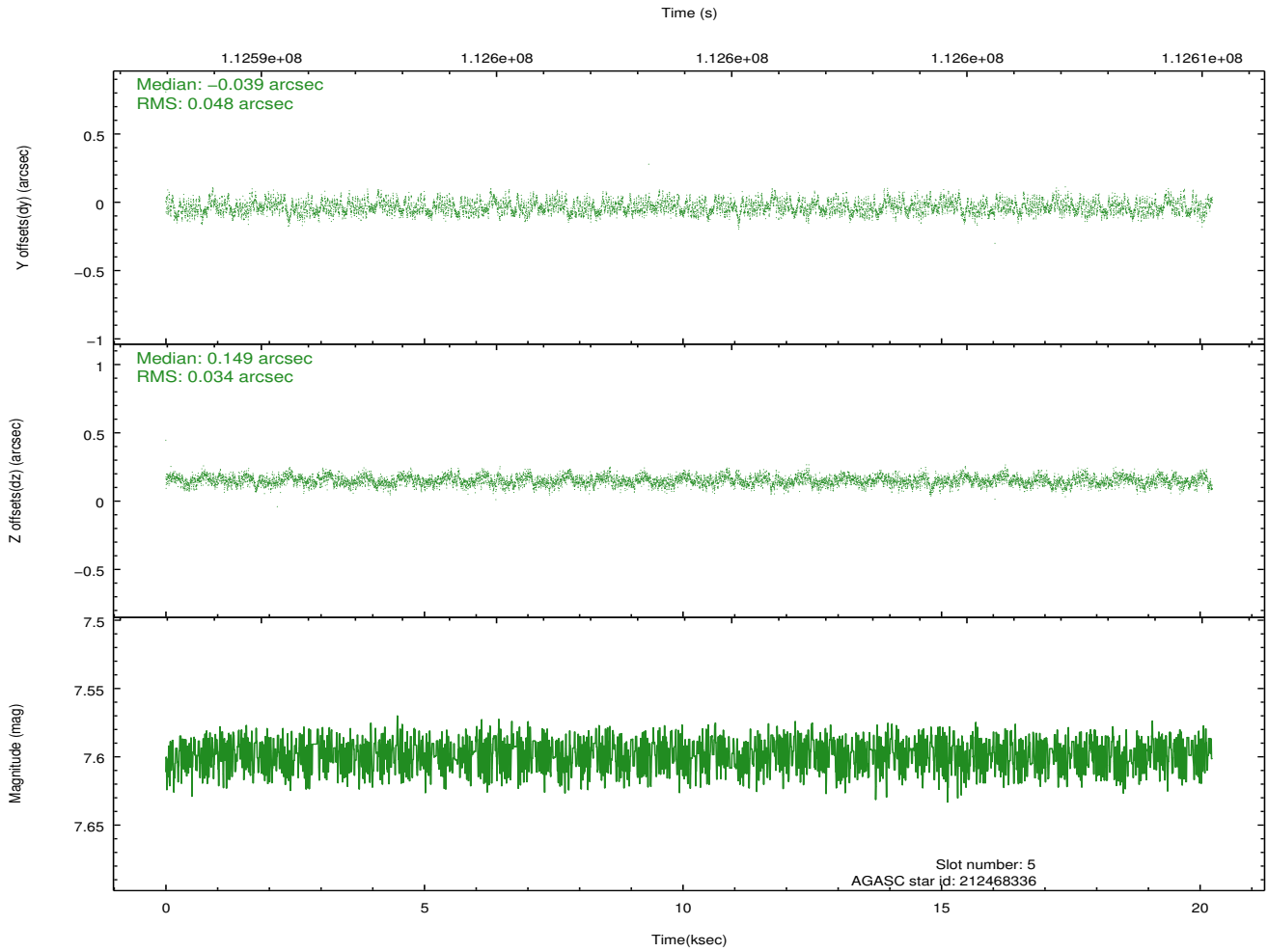
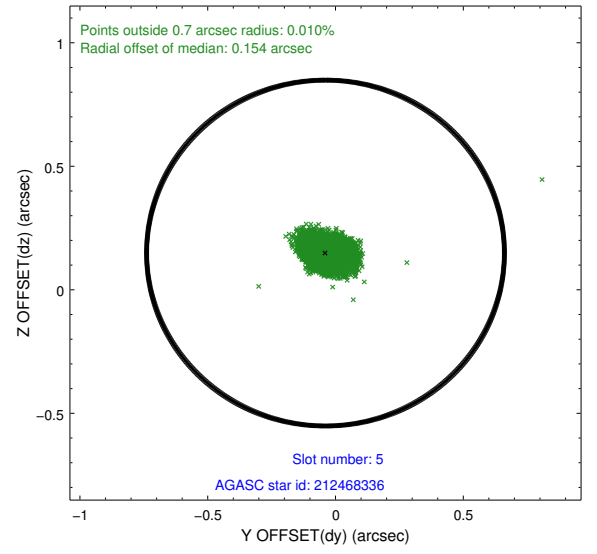
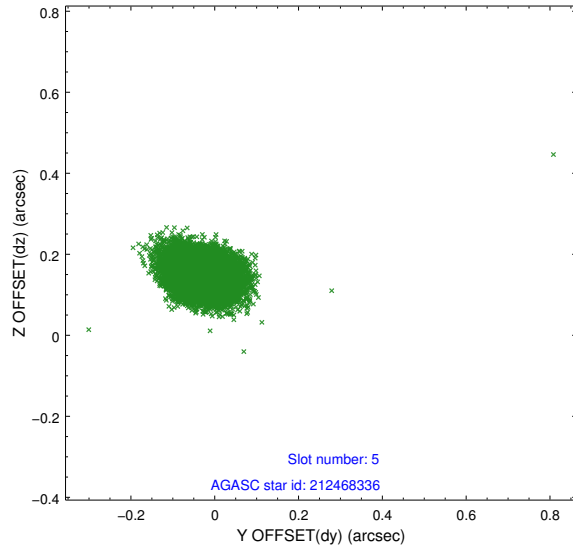
2.4.1 Slot 3



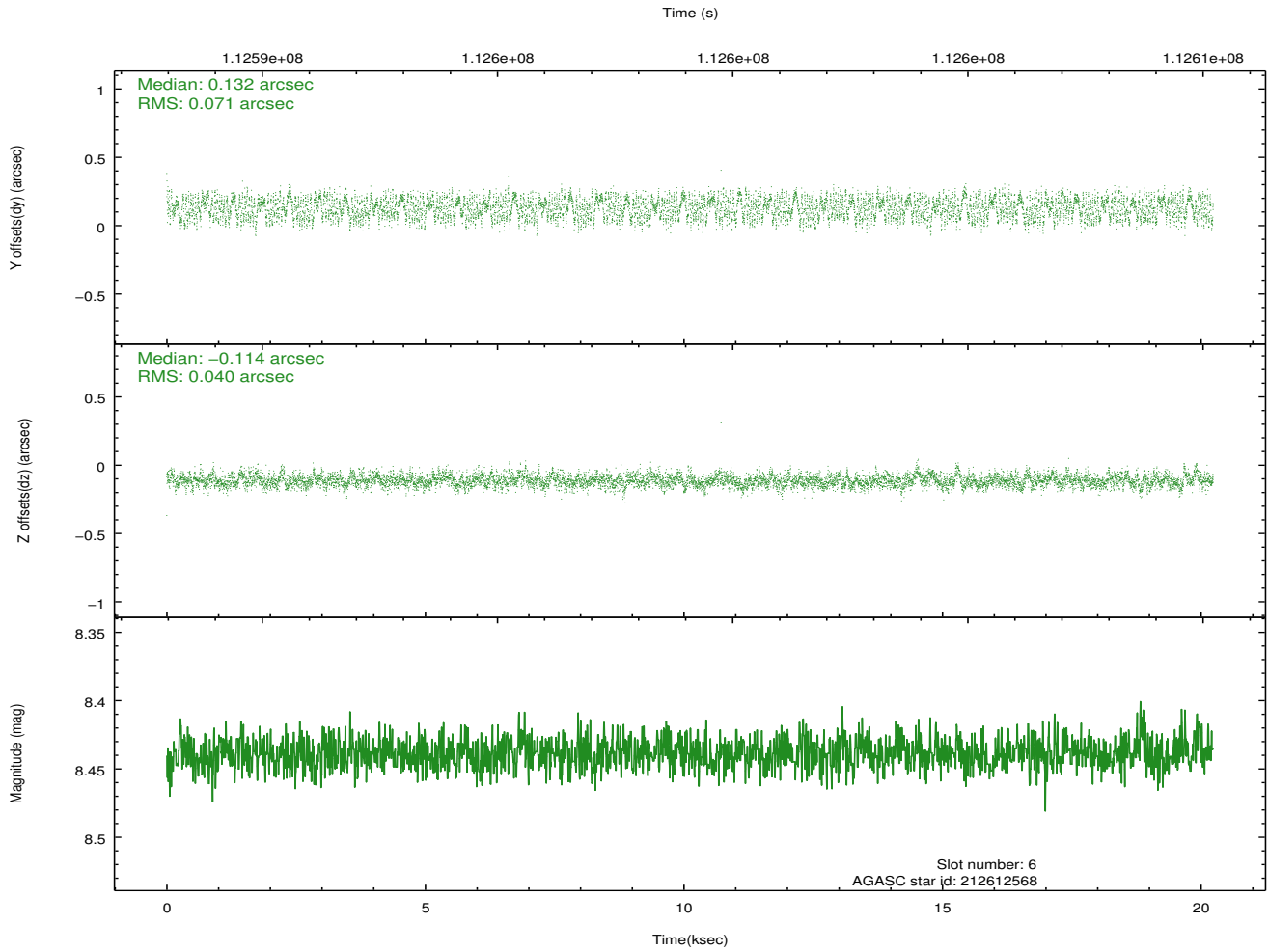
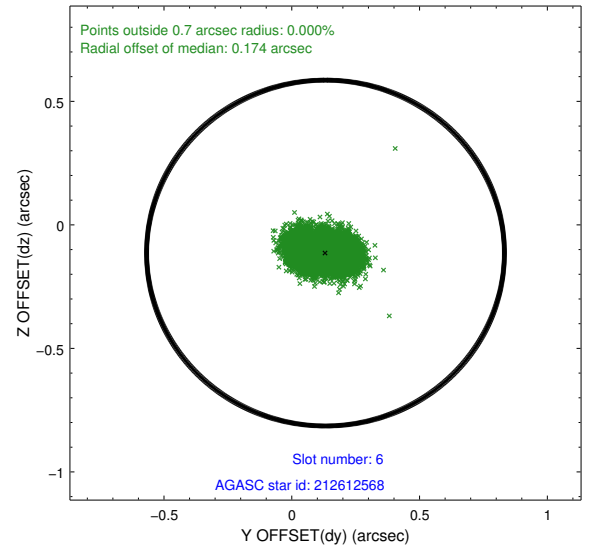
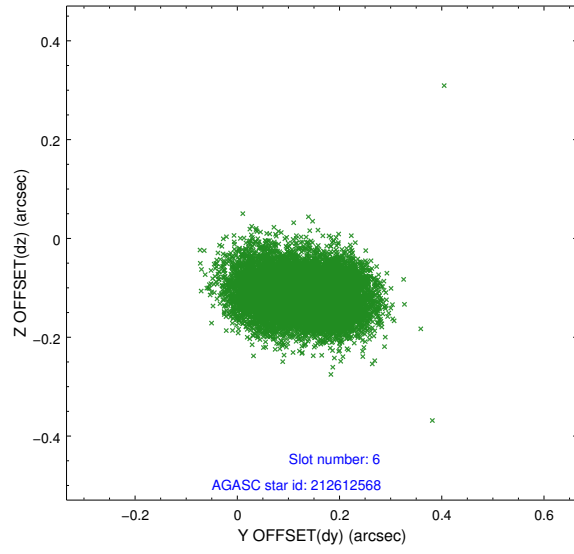
2.4.2 Slot 4



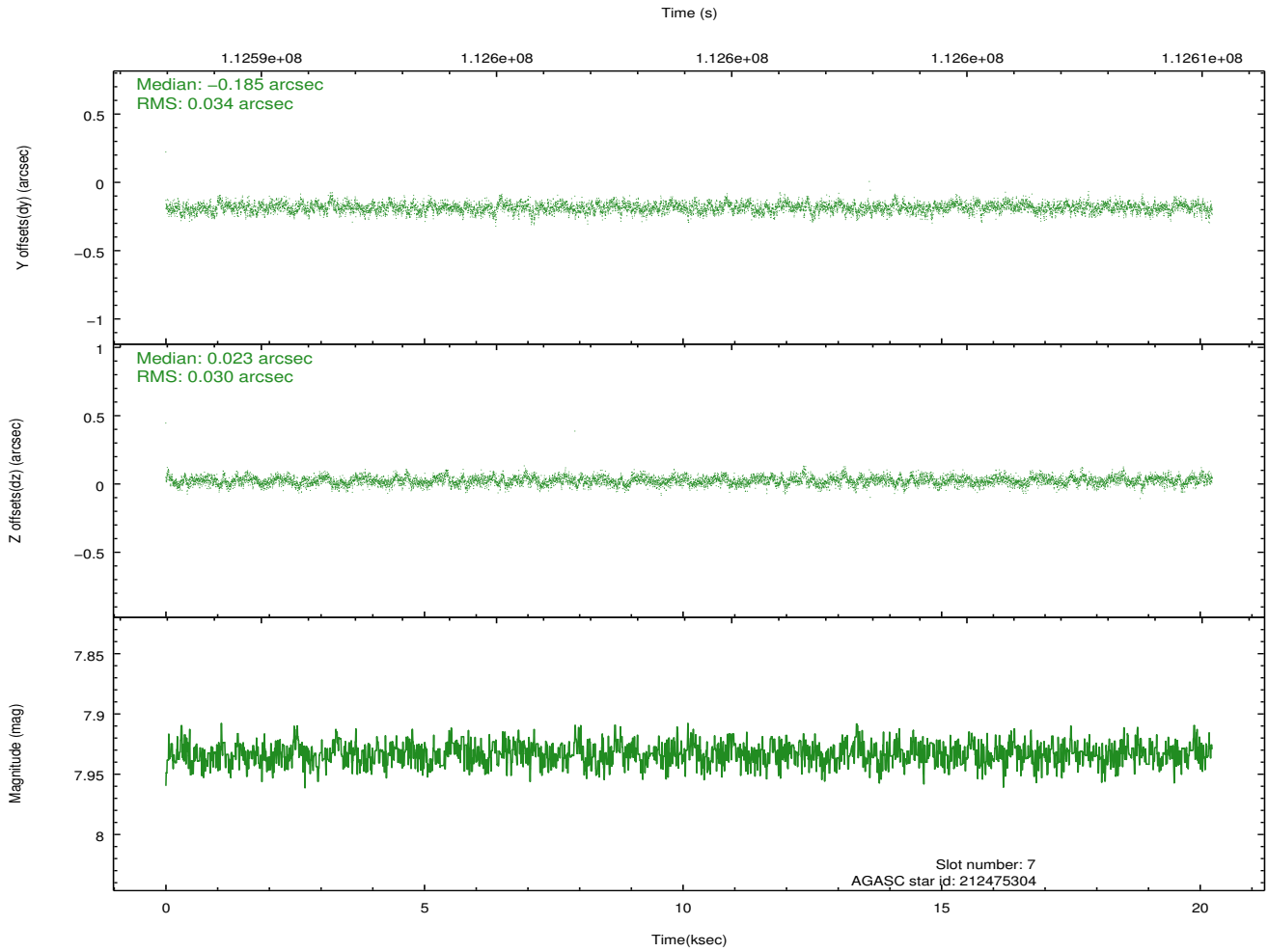
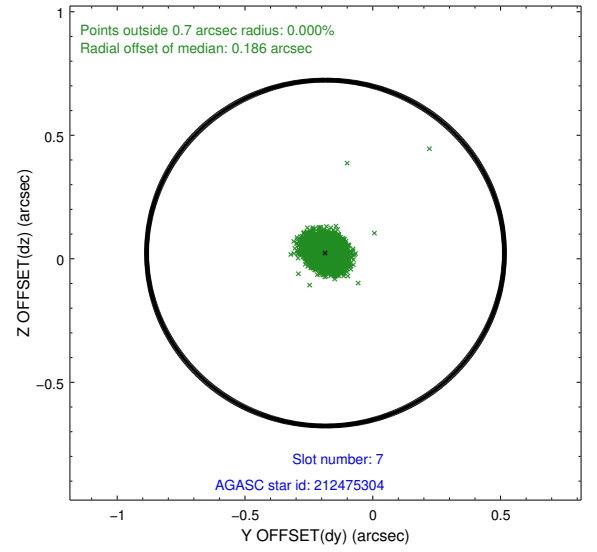
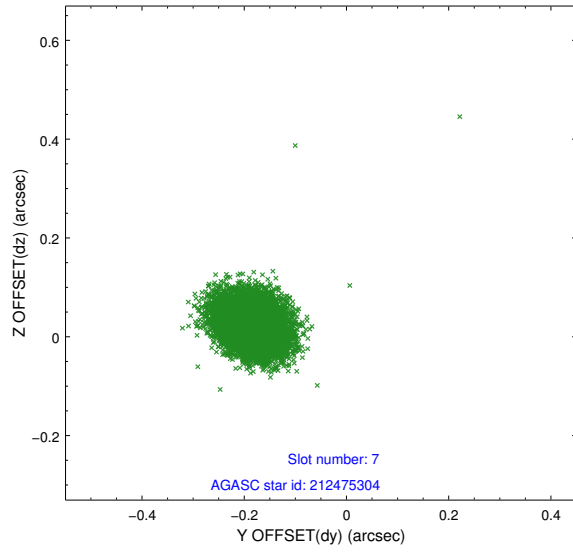
2.4.3 Slot 5



2.4.4 Slot 6

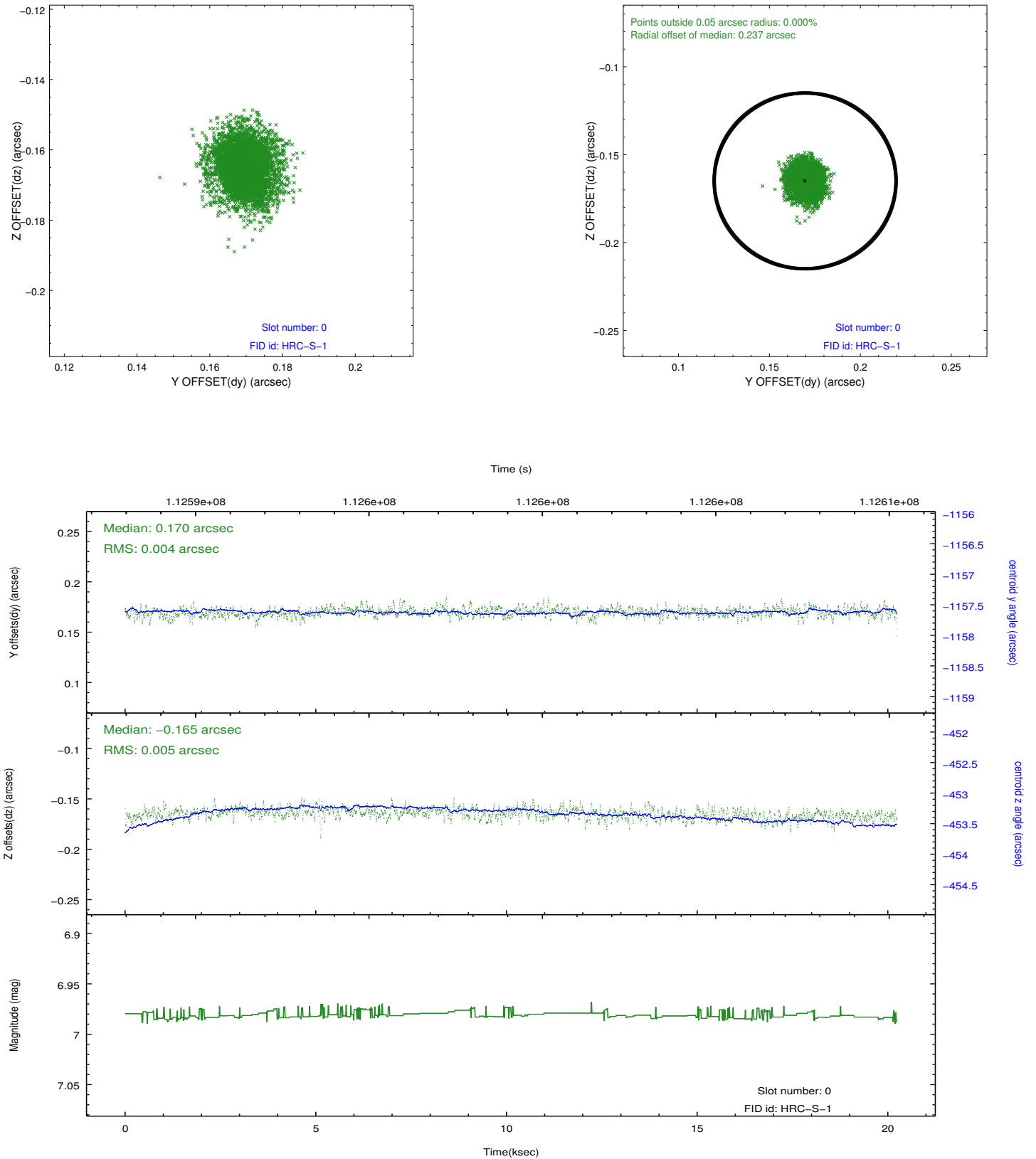


2.4.5 Slot 7

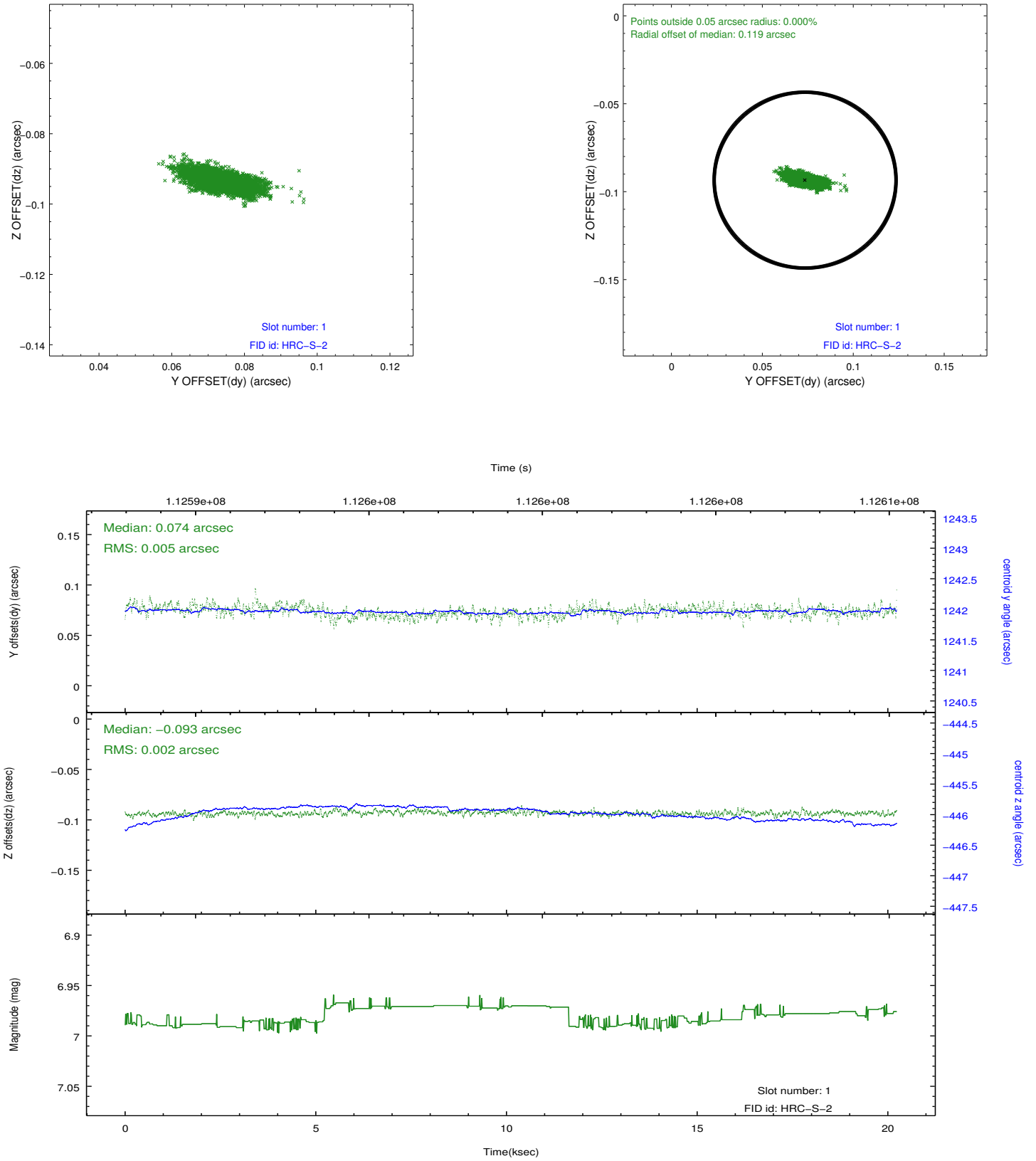


2.5 FID Slots

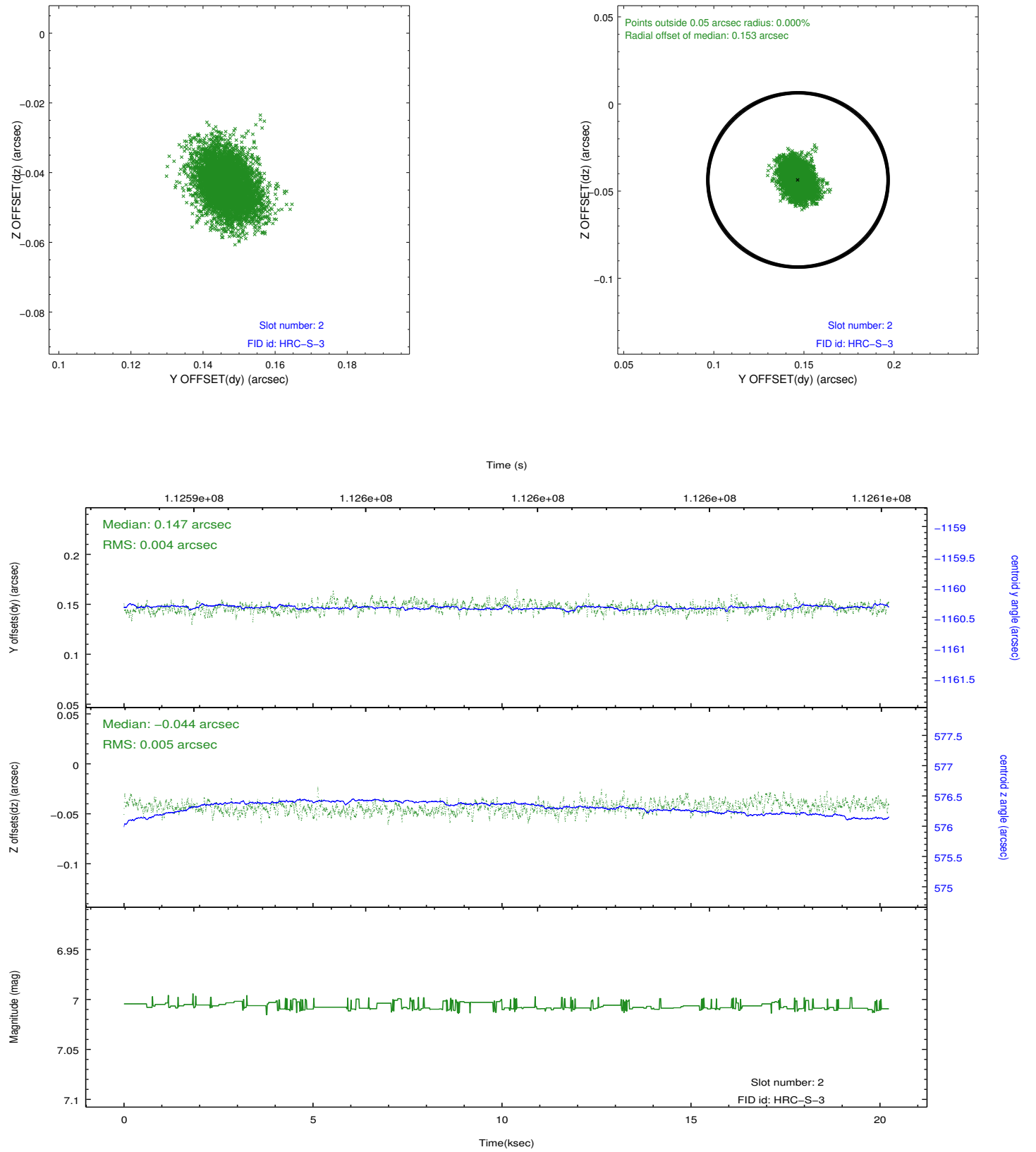
2.5.1 Slot 0



2.5.2 Slot 1

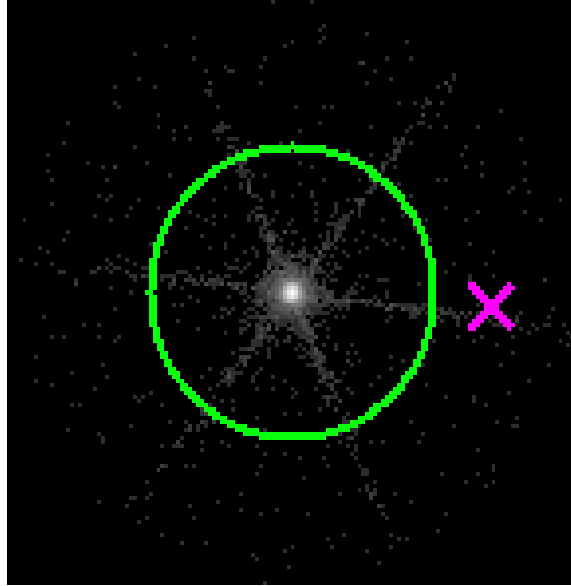


2.5.3 Slot 2

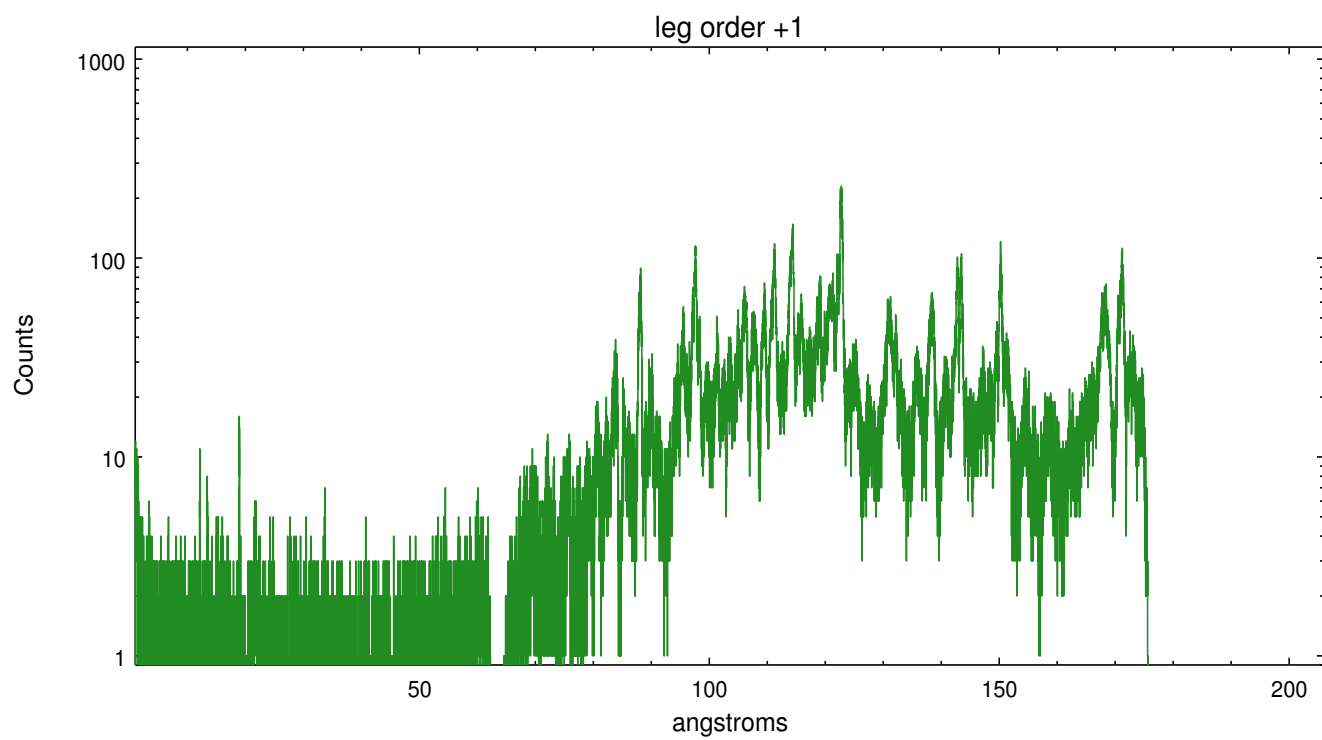
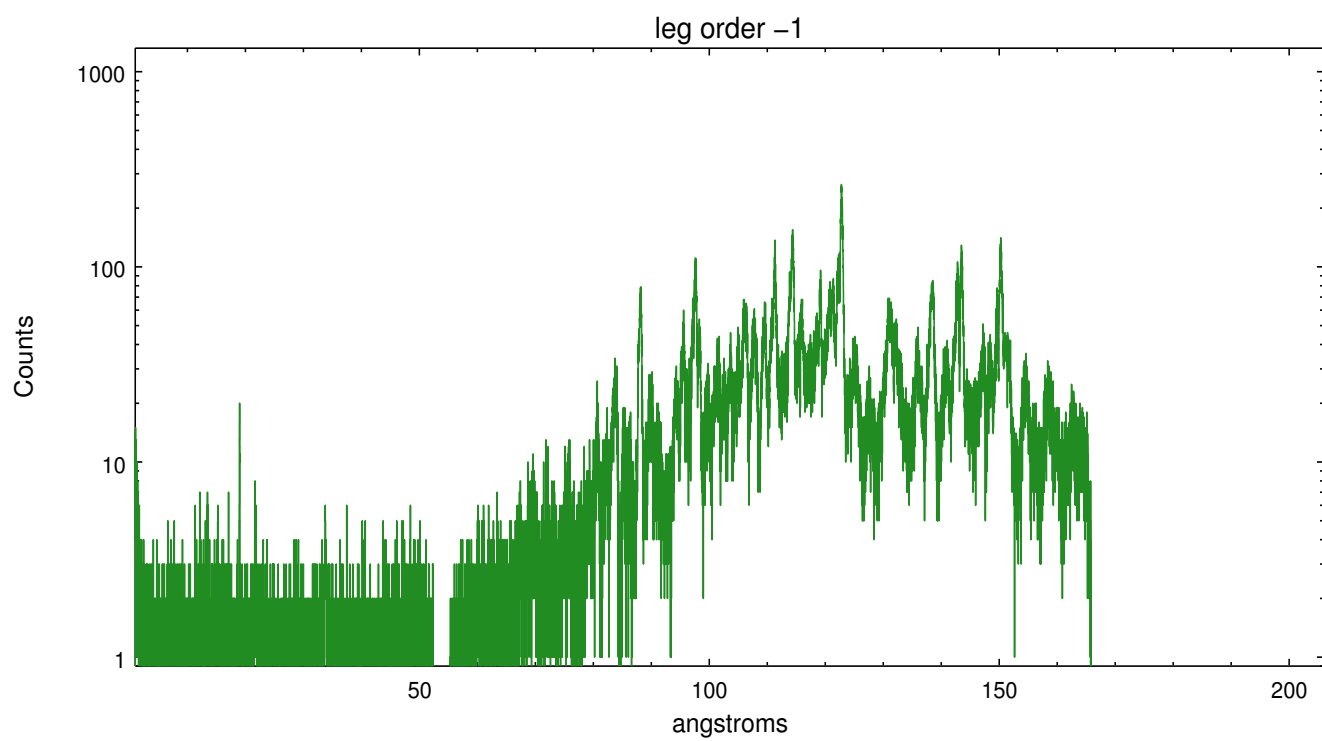


3 Gratings

3.1 LETG Arm



LETG Zero Order



A Summary

A.1 Status

V&V Scientist	Joy Nichols
V&V Date (YYYY-MM-DD)	2012.10.02
V&V Edition	1
V&V Disposition and Status	OK
V&V Charge Time	19.95

A.2 Comments