

V&V Reference Report

L2 ASCDS Version : 8.4.5

Observation 2503 - L2 Version 3
Chandra X-Ray Center

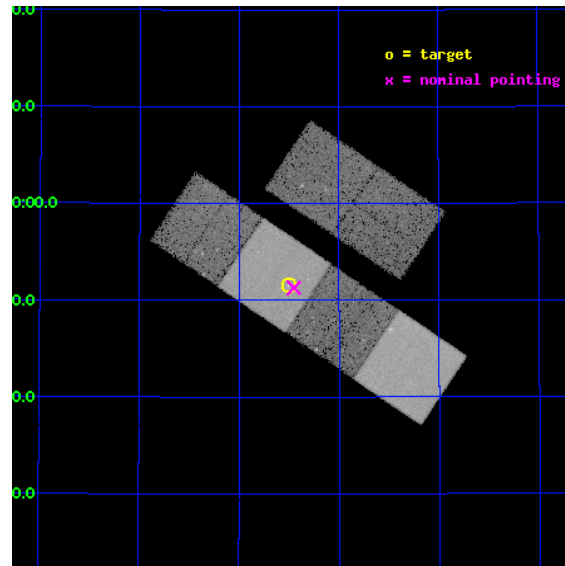
L2 Processing Date : Sep 21 2012

Contents

1	Front	2
2	OBI	3
2.1	OBI	3
2.1.1	Images	3
2.1.2	Bias	3
2.1.3	Parameters	4
2.1.4	Events	4
2.2	Compared Parameters	5
2.3	Aspect	6
2.4	Star Slots	9
2.4.1	Slot 3	9
2.4.2	Slot 4	10
2.4.3	Slot 5	11
2.4.4	Slot 6	12
2.4.5	Slot 7	13
2.5	FID Slots	14
2.5.1	Slot 0	14
2.5.2	Slot 1	15
2.5.3	Slot 2	16
A	Summary	17
A.1	Status	17
A.2	Comments	17

1 Front

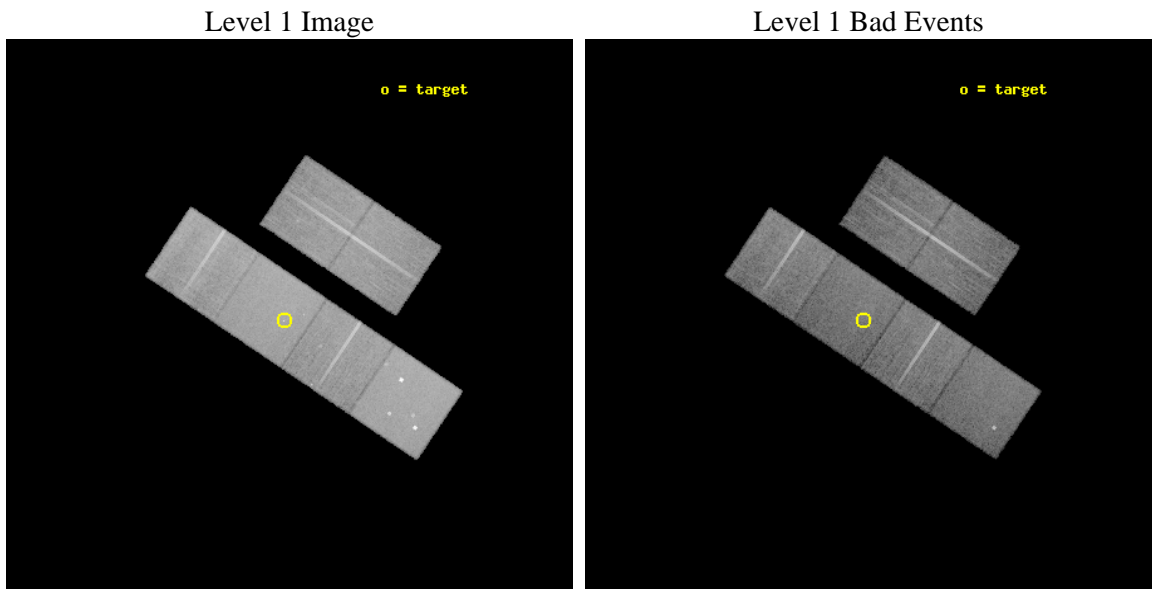
seq_num	300047	Sequence number
obs_id	2503	Observation id
title	THE ORIGIN OF SOFT X-RAYS IN DQ HERCULIS	Proposal title
observer	Dr Koji Mukai	Principal investigator
object	DQ HERCULIS	Source name
dtcycle	0	
cycle	P	events from which exps? Prim/Second/Both
ra_targ	271.875833	Observer's specified target RA [deg]
dec_targ	45.858889	Observer's specified target Dec [deg]
ra_nom	271.86299259065	Nominal RA [deg]
dec_nom	45.854992802879	Nominal Dec [deg]
roll_nom	213.84045552367	Nominal Roll [deg]
revision	3	Processing version of data
ontime	21868.800020352	Sum of GTIs [s]
livetime	21591.884106684	Livetime [s]
ontime2	21868.800020352	Sum of GTIs [s]
ontime3	21868.800020352	Sum of GTIs [s]
ontime5	21868.800020352	Sum of GTIs [s]
ontime6	21868.800020352	Sum of GTIs [s]
ontime7	21868.800020352	Sum of GTIs [s]
ontime8	21868.800020352	Sum of GTIs [s]
l2events	222941	Number of level 2 events



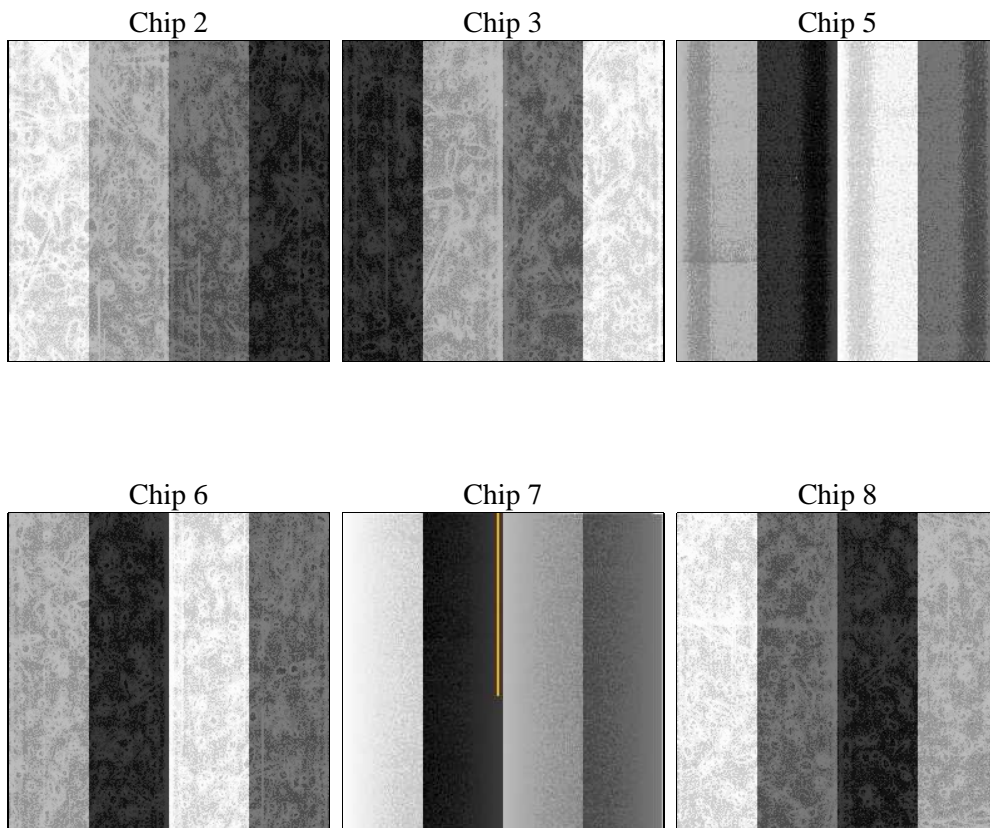
2 OBI

2.1 OBI

2.1.1 Images



2.1.2 Bias



2.1.3 Parameters

obi_num	0	Obi number	sched_exp_time	21960.000000	[s] Scheduled observation exposure time
ascdsver	8.4.5	Processing system revision	ontime	21868.800020352	Sum of GTIs [s]
caldsver	4.5.1.1	 	ontime2	21868.800020352	Sum of GTIs [s]
date	2012-09-21T10:12:09	Date and time of file creation	ontime3	21868.800020352	Sum of GTIs [s]
revision	3	Processing version of data	ontime5	21868.800020352	Sum of GTIs [s]
			ontime6	21868.800020352	Sum of GTIs [s]
			ontime7	21868.800020352	Sum of GTIs [s]
			ontime8	21868.800020352	Sum of GTIs [s]
			l1events	1027134	Number of level 1 events

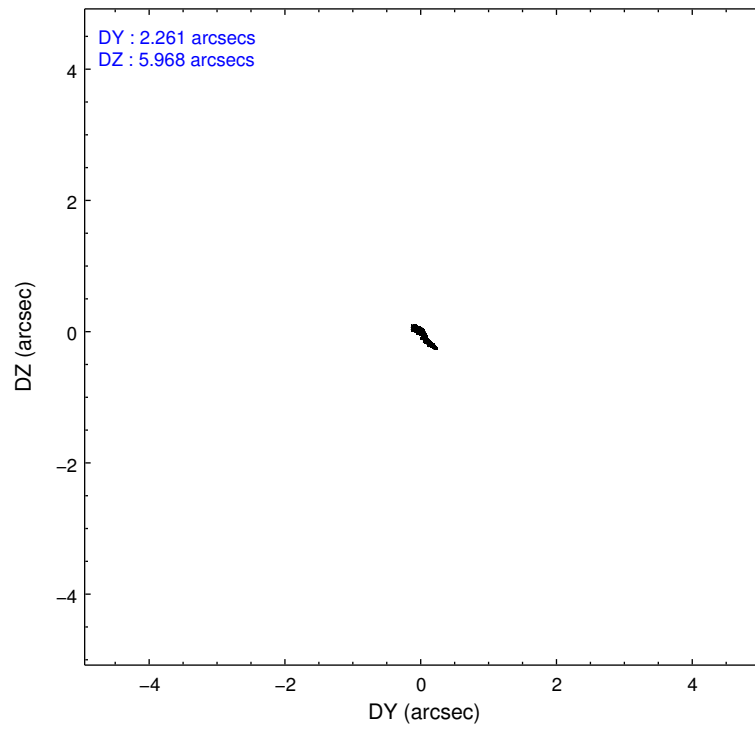
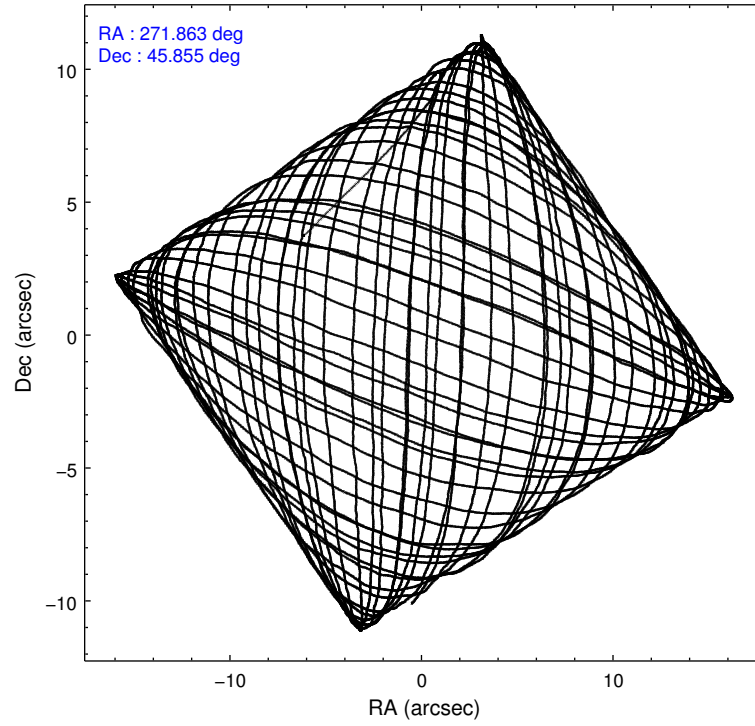
2.1.4 Events

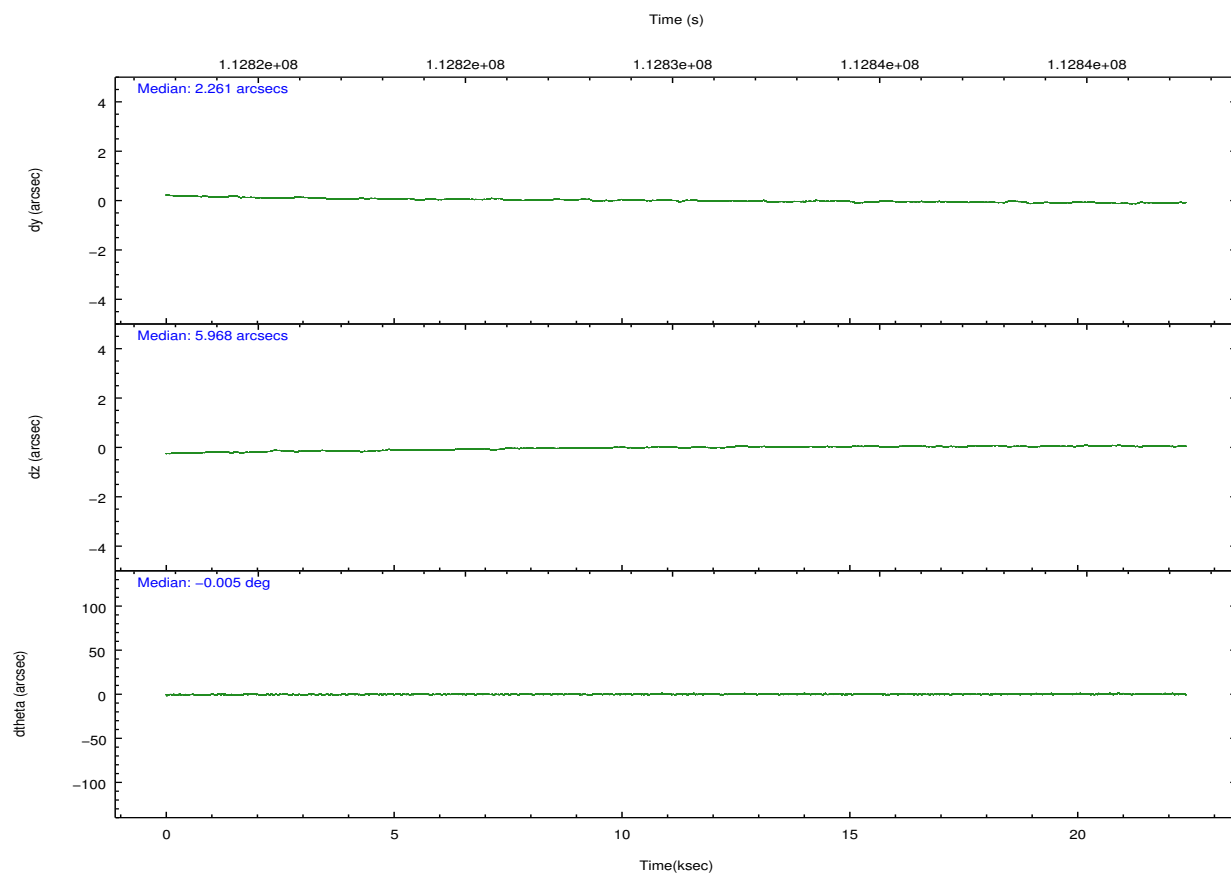
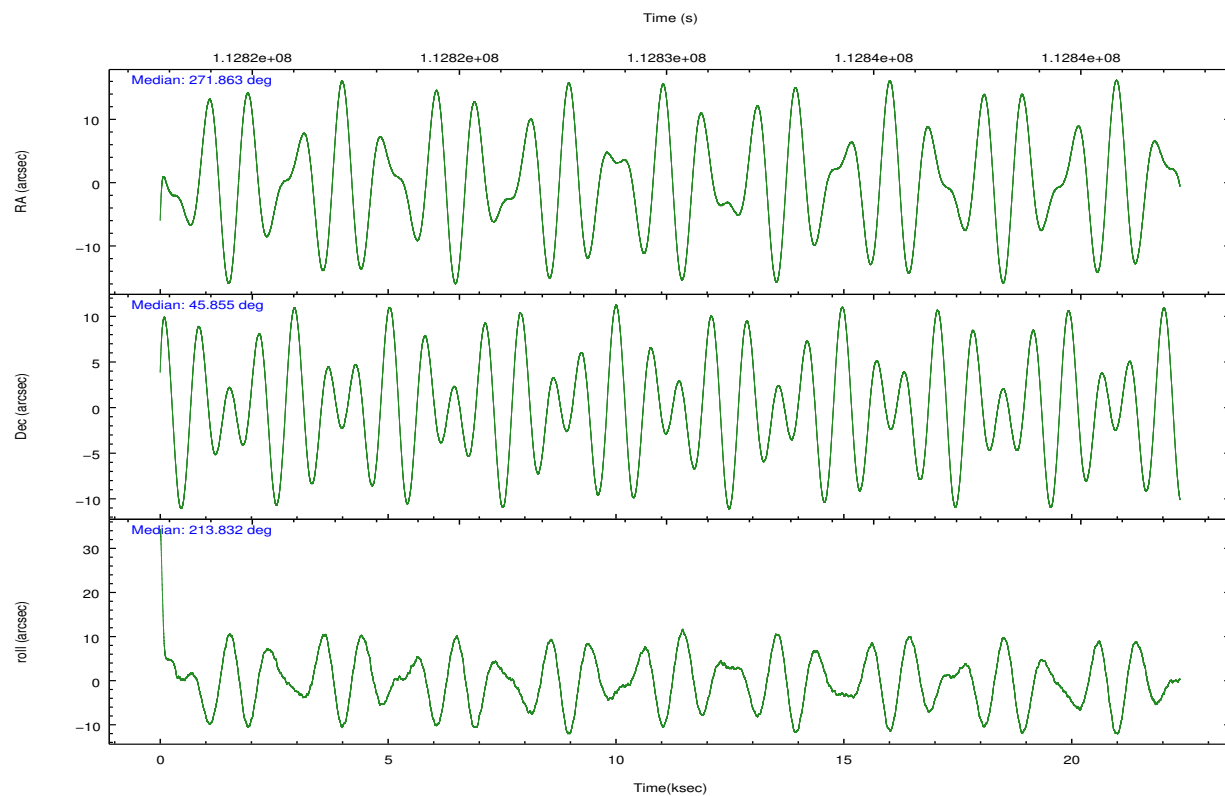
	ccd 2	ccd 3	ccd 5	ccd 6	ccd 7	ccd 8		ccd 2	ccd 3	ccd 5	ccd 6	ccd 7	ccd 8
level 1 events	148016	142839	213480	150676	186618	185505	grade 0 events	6691	7051	16814	7260	7637	11186
rejected events	131955	126597	111156	133495	108806	149075		4%	4%	7%	4%	4%	6%
rejected %	89%	88%	52%	88%	58%	80%	grade 1 events	67	65	1402	89	179	98
								0%	0%	0%	0%	0%	0%
							grade 2 events	3576	3246	28720	3327	15353	8065
								2%	2%	13%	2%	8%	4%
							grade 3 events	1508	1661	4218	1701	7264	3720
								1%	1%	1%	1%	3%	2%
							grade 4 events	1471	1574	4003	1615	6858	3450
								0%	1%	1%	1%	3%	1%
							grade 5 events	5150	5517	15564	6230	17778	7835
								3%	3%	7%	4%	9%	4%
							grade 6 events	2823	2712	48592	3281	40711	10022
								1%	1%	22%	2%	21%	5%
							grade 7 events	126730	121013	94167	127173	90838	141129
								85%	84%	44%	84%	48%	76%

2.2 Compared Parameters

Parameter	Planned	Actual	Parameter	Planned	Actual
Instrument	ACIS	ACIS	Obspar format version number	7	7
Detector	ACIS-235678	ACIS-235678	Obspar file type	PREDICTED	ACTUAL
Grating	NONE	NONE	Obspar update status	NONE	UPDATED
Data mode	FAINT	FAINT	Number of optional ACIS chips dropped	0	0
Observation mode	POINTING	POINTING	On-chip summing requested	N	N
[deg] Pointing RA	271.879892	271.8629925906512	Subarray requested	NONE	NONE
[deg] Pointing Dec	45.879602	45.85499280287914	Alternating exposures requested	N	N
[deg] Pointing Roll	213.671689	213.8404555236728	[s] Primary exposure time	0.000000	3.2
[mm] SIM focus pos	-0.684267	-0.6828225247311905			
[mm] SIM defocus	0	0.001444936568705701			
[mm] SIM translation stage pos	-190.132523	-190.1400660498719			
[mm] SIM translation stage offset	0	0.00754346686406393			
[s] Observation start time (MET)	112819311.184000	112818226.95398			
Observation start date	2001-07-29T18:40:47	2001-07-29T18:23:46			
[s] Observation end time (MET)	112841271.184000	112842047.44242			
Observation end date	2001-07-30T00:46:47	2001-07-30T01:00:47			
Read mode	TIMED	TIMED			

2.3 Aspect



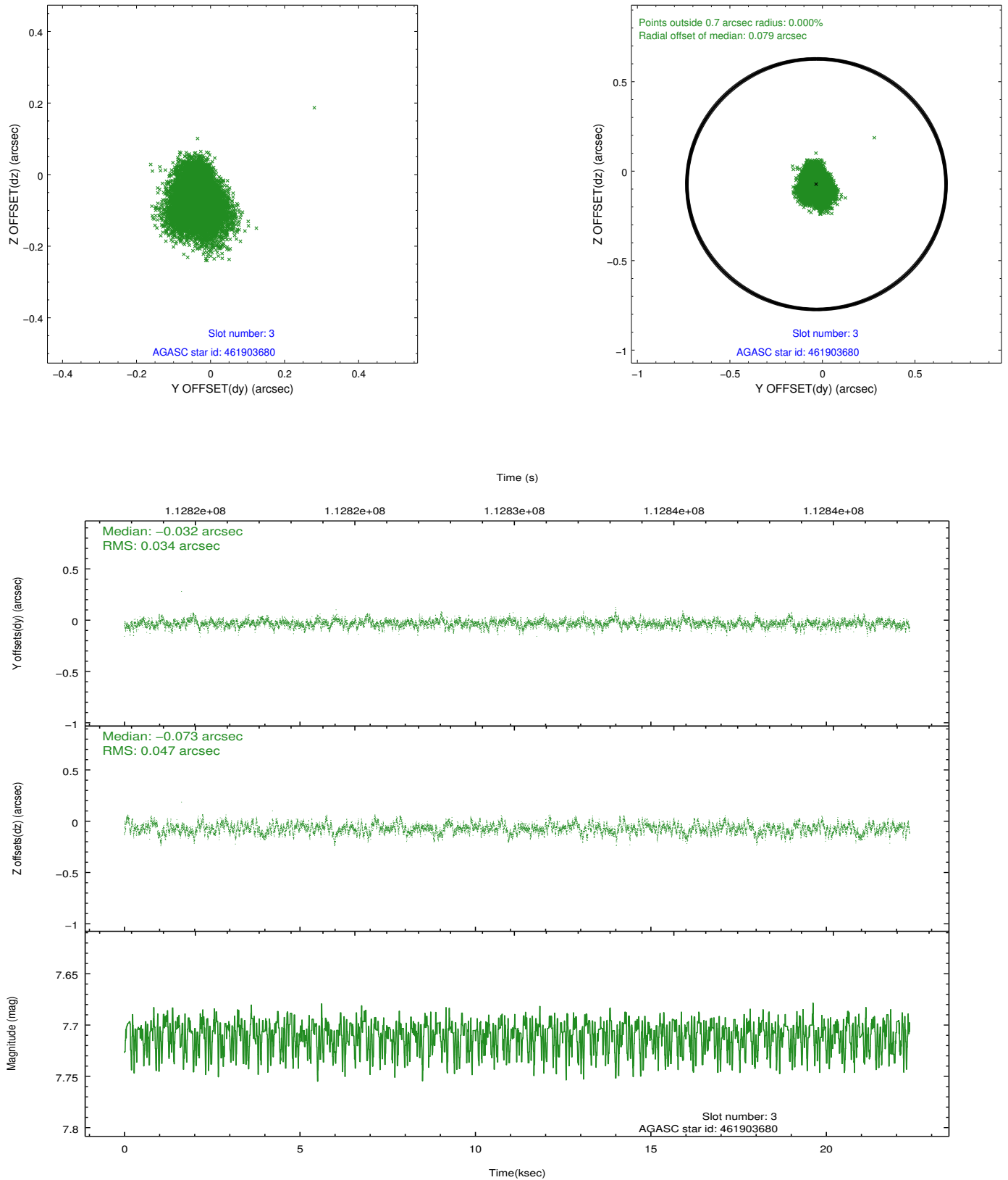


Slot Statistics

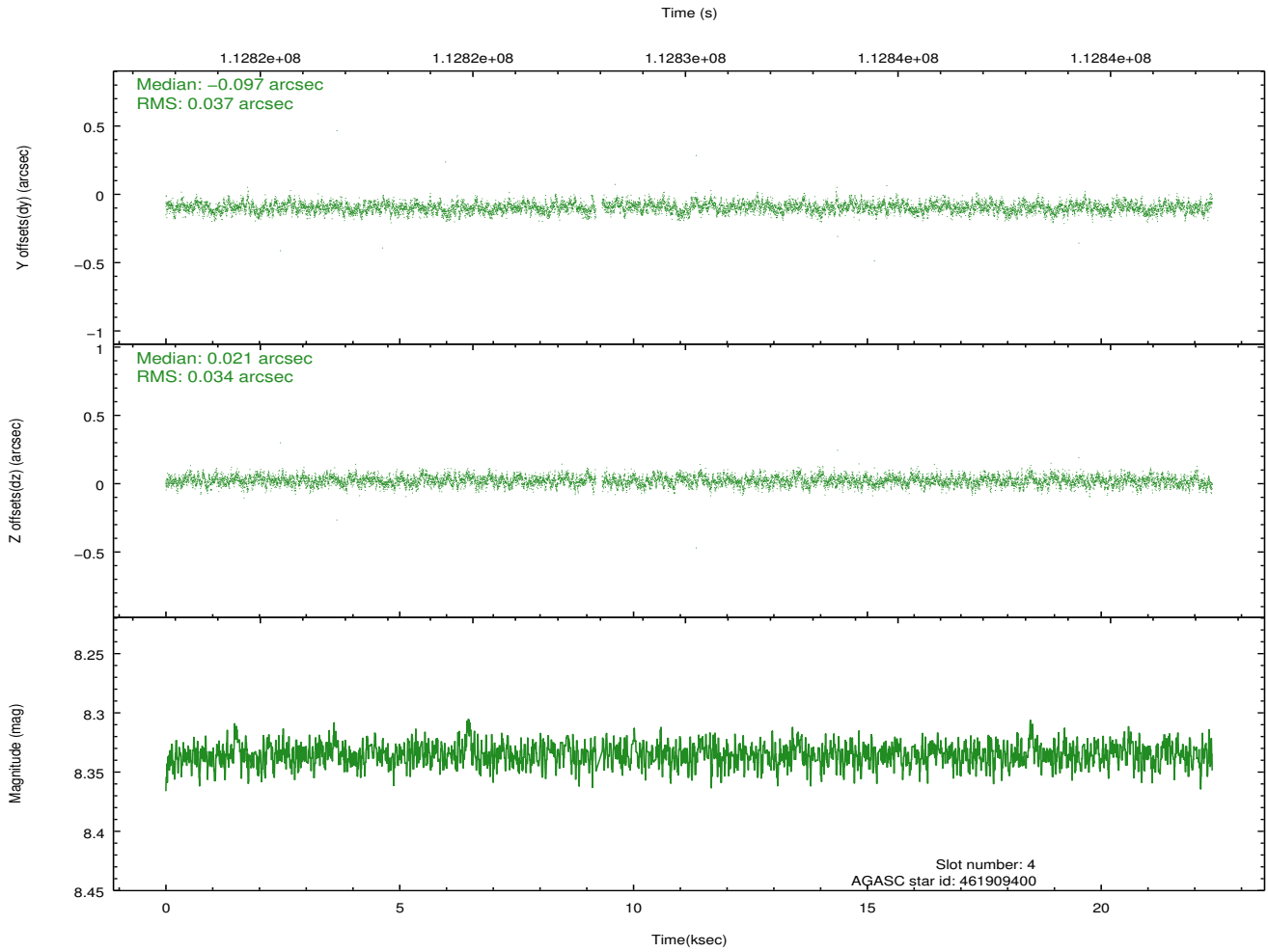
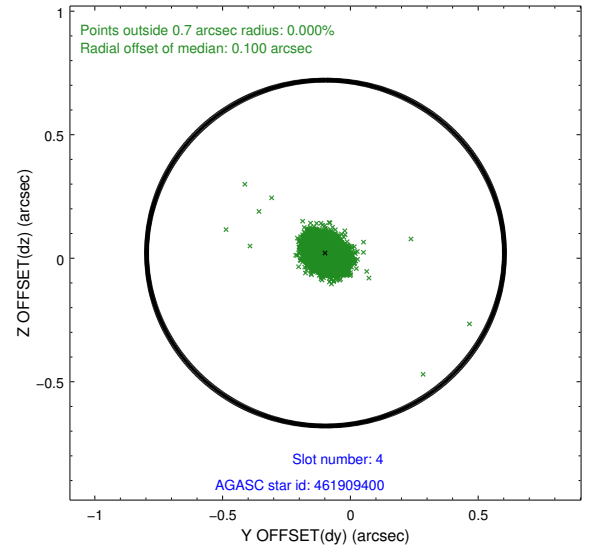
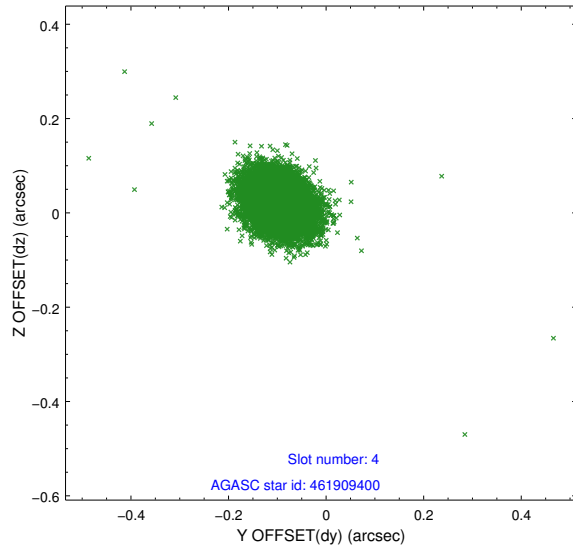
slot	status	id	mag	n_pts	med_dy	med_dz	dr1	dr2	ra	dec	mean_y	mean_z
0	FID	ACIS-S-2	7.11	5458	-0.042	-0.002	0.006	0.010	0.000000	0.000000	-754.89	-1727.09
1	FID	ACIS-S-4	7.20	5457	-0.023	0.021	0.005	0.010	0.000000	0.000000	2158.29	181.33
2	FID	ACIS-S-5	7.24	5458	0.034	-0.010	0.006	0.011	0.000000	0.000000	-1807.51	175.05
3	GUIDE	461903680	7.71	10913	-0.032	-0.073	0.060	0.103	271.661765	46.273277	-334.26	-1480.94
4	GUIDE	461909400	8.33	10850	-0.097	0.021	0.052	0.085	272.212627	45.772711	-483.17	782.00
5	GUIDE	461910784	8.69	10914	-0.018	-0.122	0.056	0.092	271.578651	45.658398	1071.44	241.60
6	GUIDE	461911872	8.78	10911	0.124	0.091	0.064	0.103	271.267939	45.702917	1630.08	-328.03
7	GUIDE	461904776	9.15	10909	0.025	0.085	0.087	0.141	272.396559	45.830962	-983.74	860.94

2.4 Star Slots

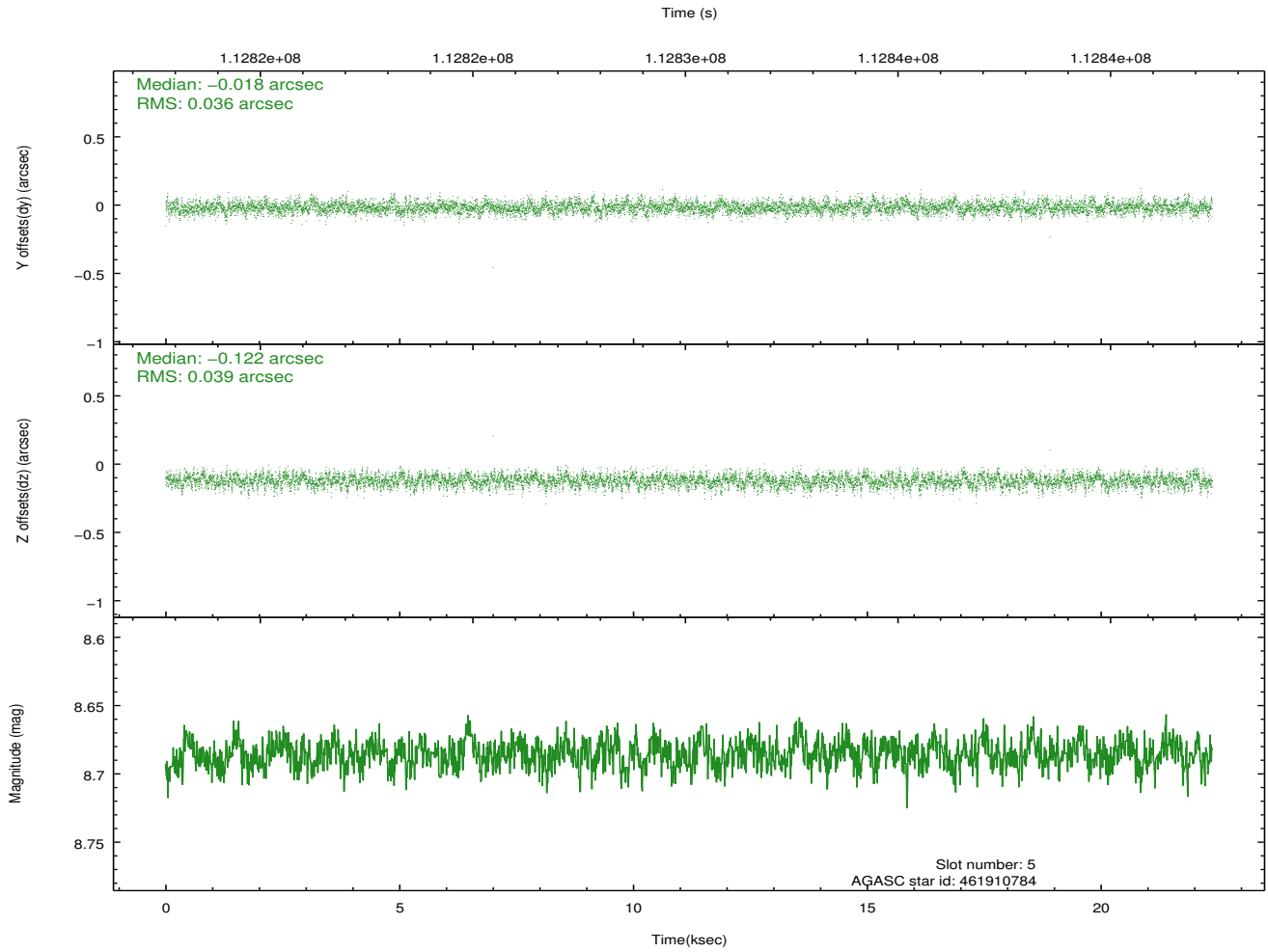
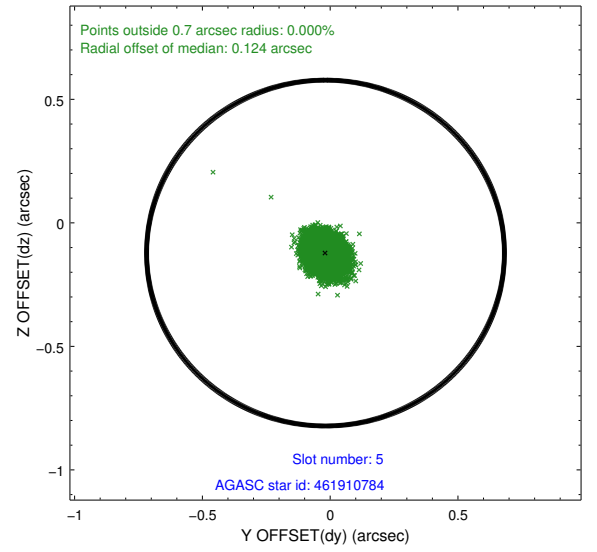
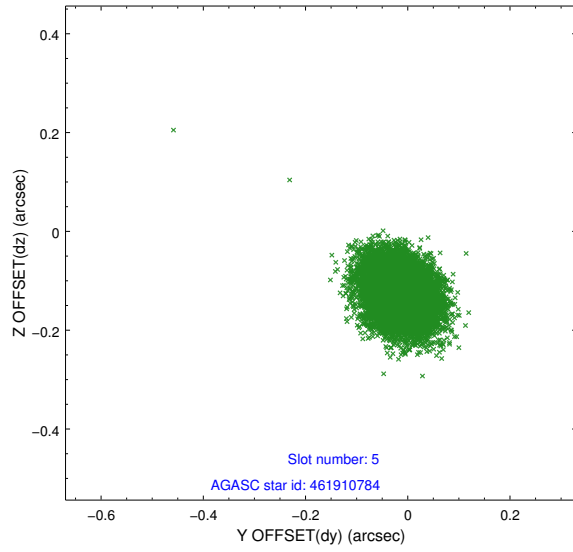
2.4.1 Slot 3



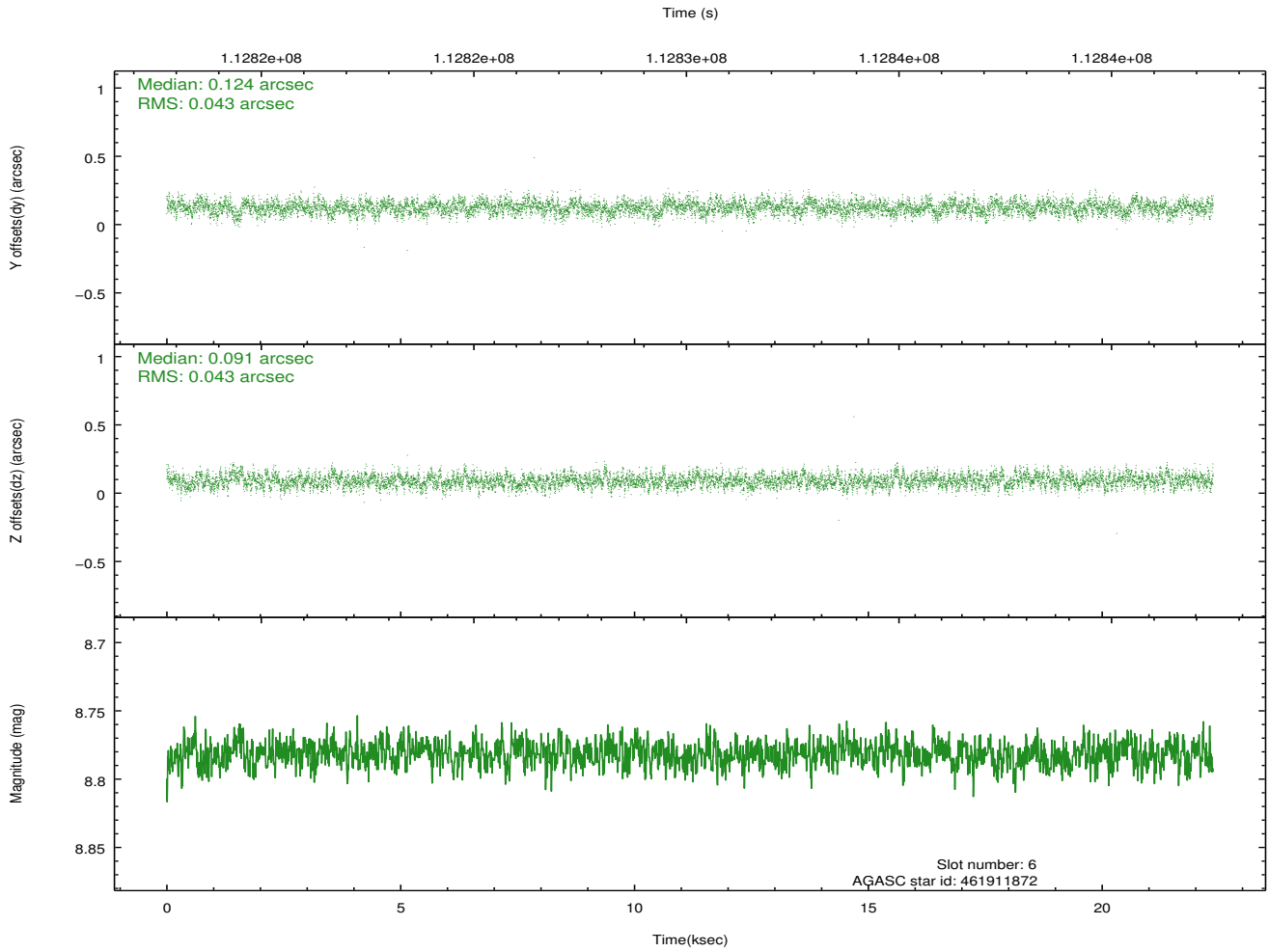
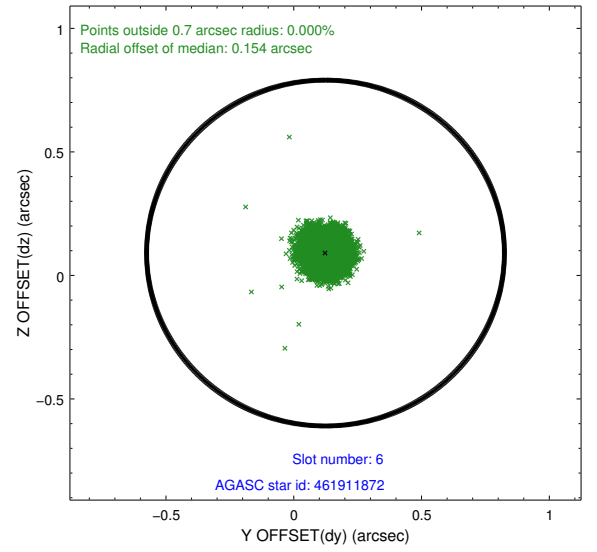
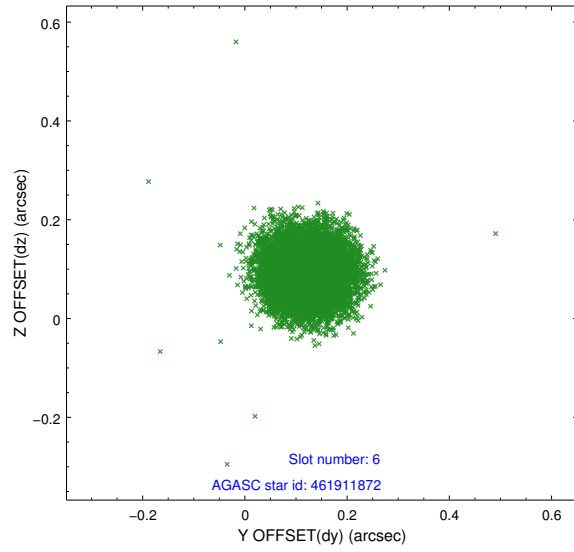
2.4.2 Slot 4



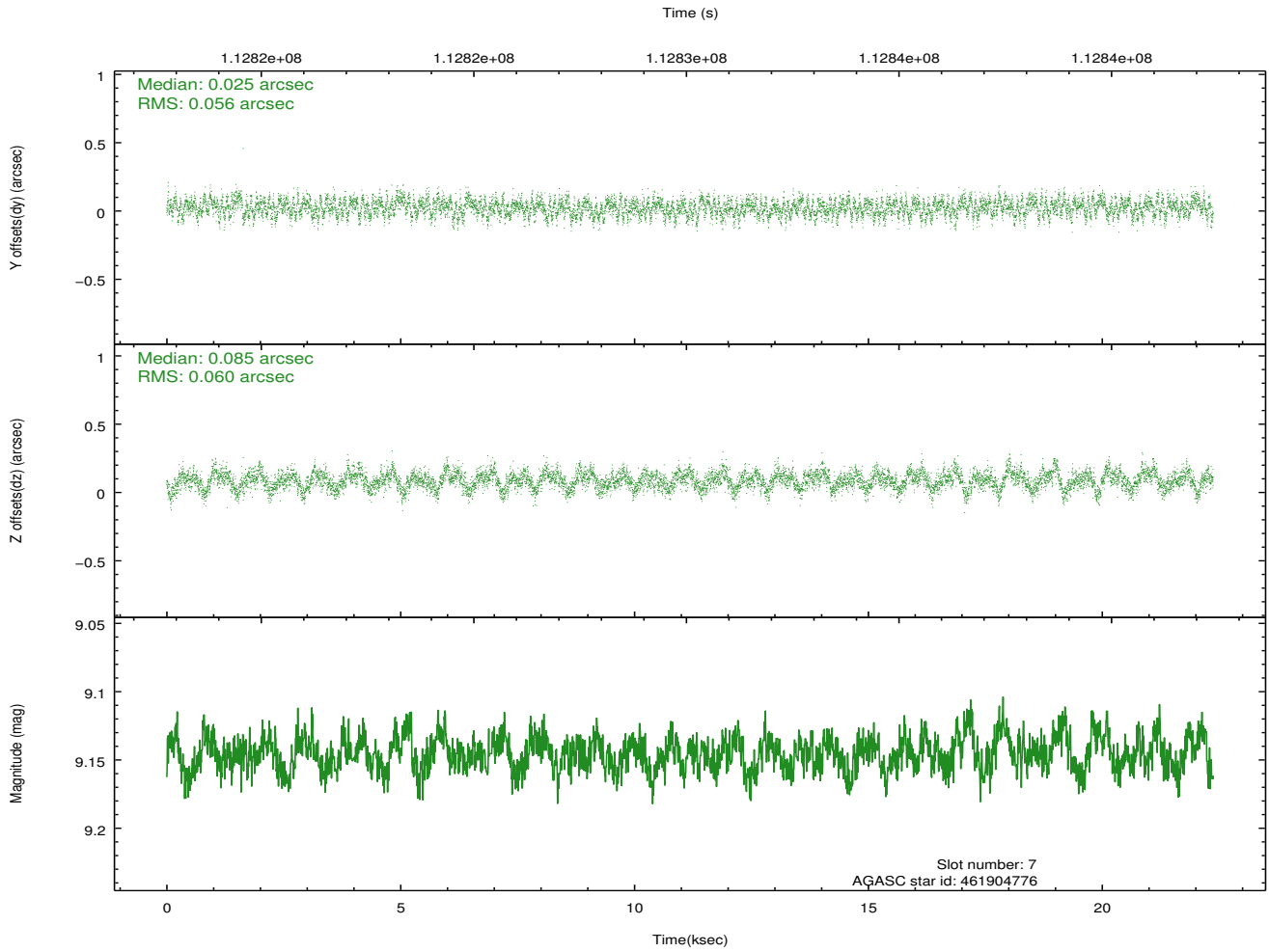
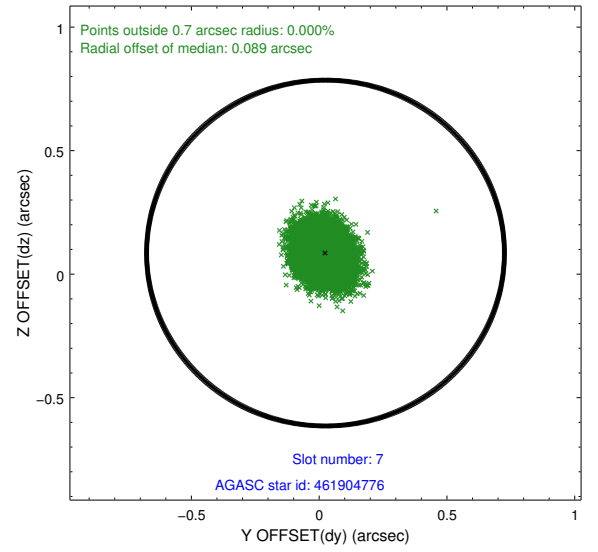
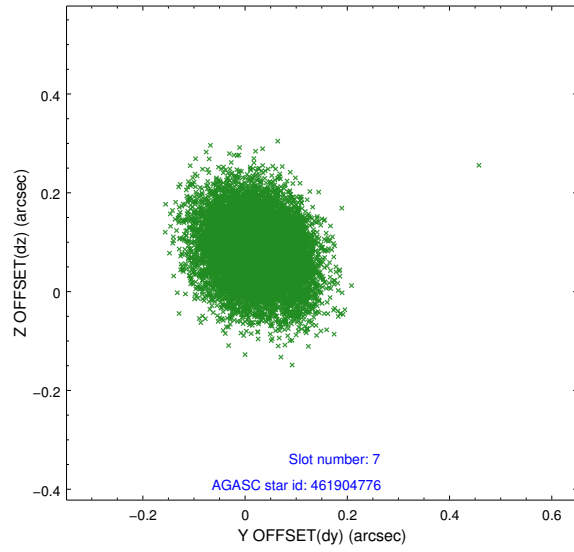
2.4.3 Slot 5



2.4.4 Slot 6

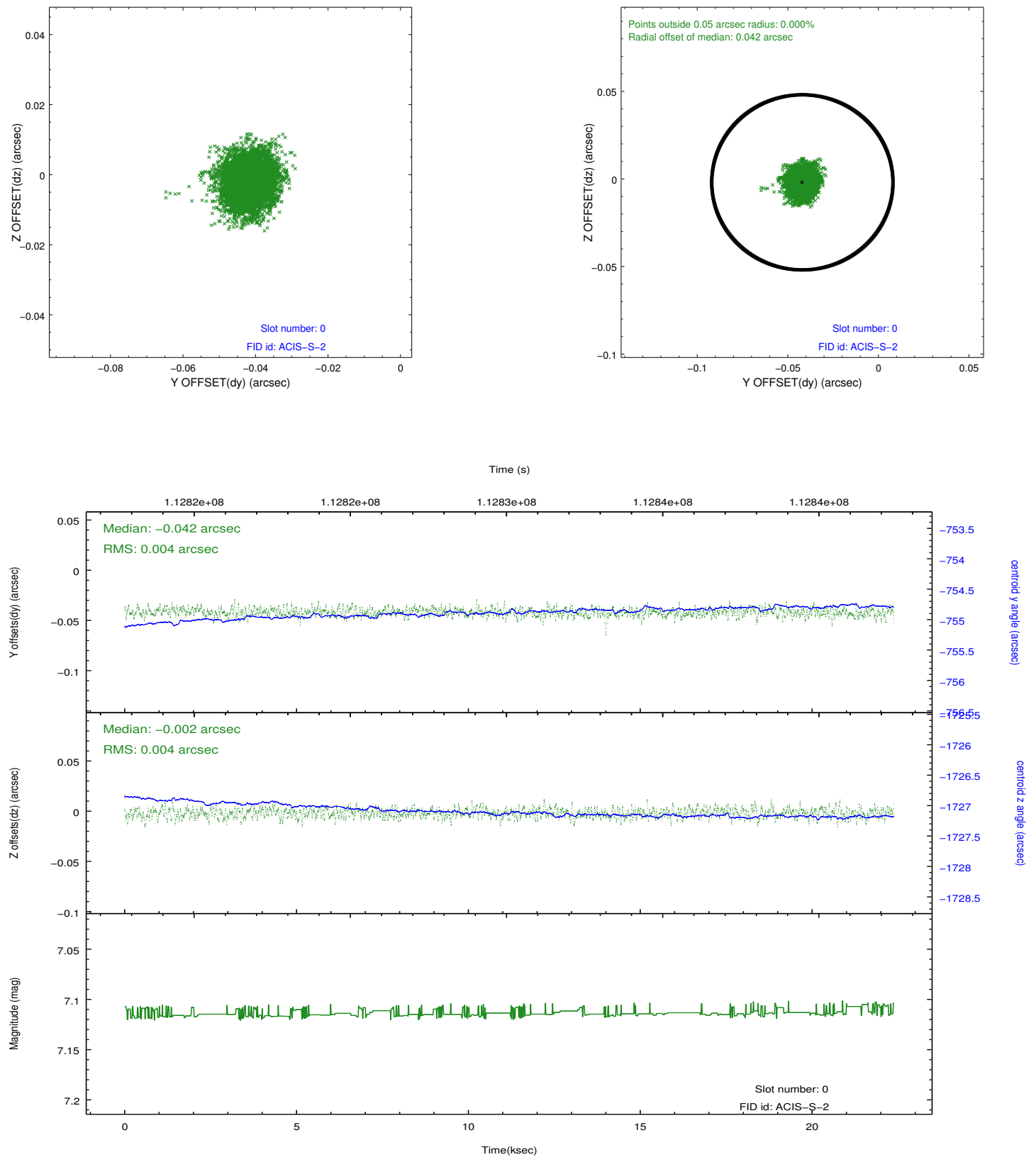


2.4.5 Slot 7

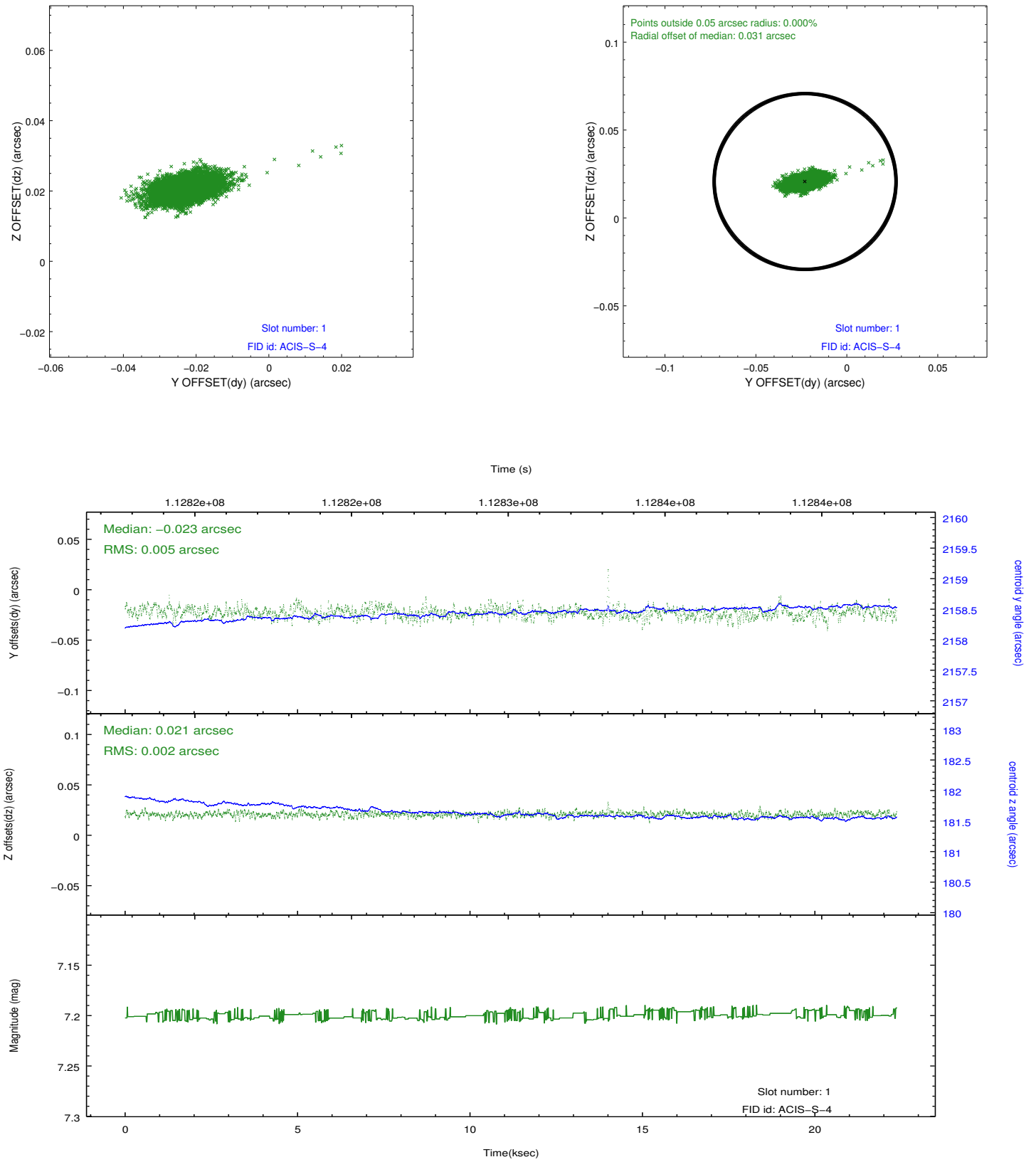


2.5 FID Slots

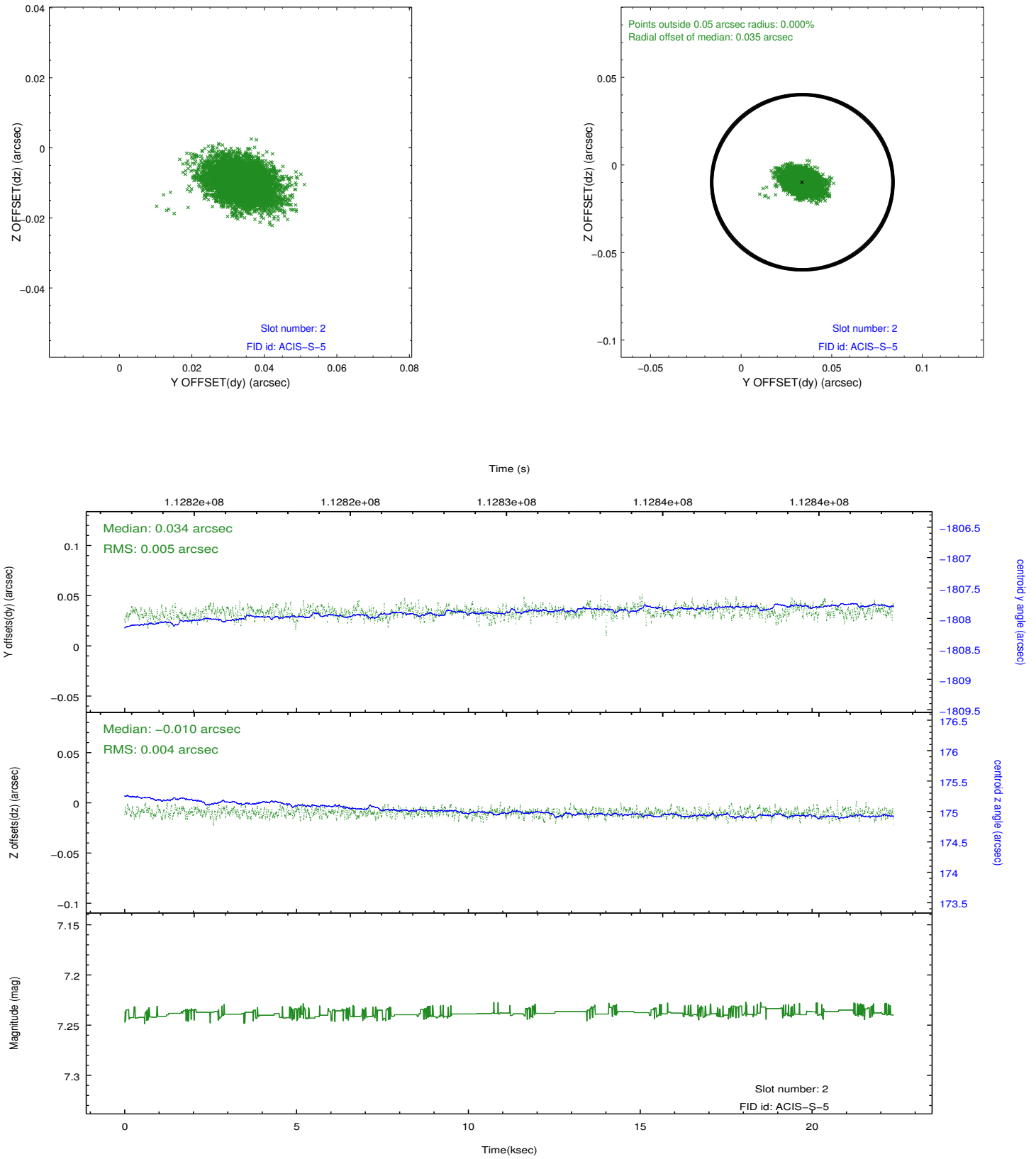
2.5.1 Slot 0



2.5.2 Slot 1



2.5.3 Slot 2



A Summary

A.1 Status

V&V Scientist	Jen Lauer
V&V Date (YYYY-MM-DD)	2012.09.25
V&V Edition	1
V&V Disposition and Status	OK
V&V Charge Time	22

A.2 Comments

Charge time for this ObsId remains at previous value of 22 ks although with the current processing the charge time would have been 22.87 ksec.