

V&V Reference Report

L2 ASCDS Version : 8.4.5

Observation 1903 - L2 Version 4
Chandra X-Ray Center

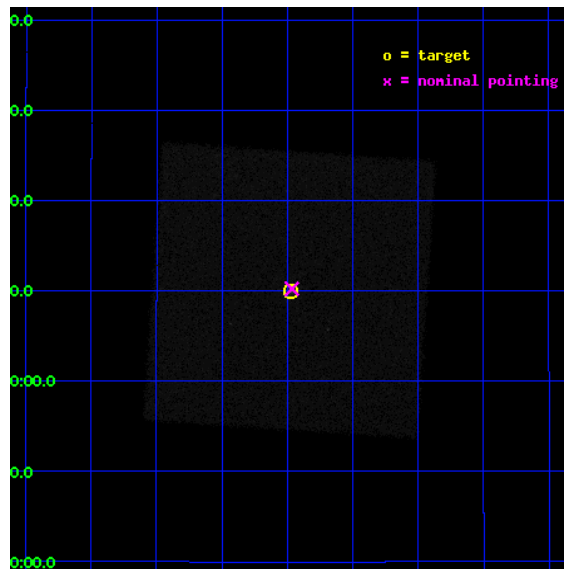
L2 Processing Date : Sep 20 2012

Contents

1	Front	2
2	OBI	3
2.1	OBI	3
2.1.1	Images	3
2.1.2	Parameters	4
2.1.3	Events	4
2.2	Compared Parameters	5
2.3	Aspect	6
2.4	Star Slots	9
2.4.1	Slot 3	9
2.4.2	Slot 4	10
2.4.3	Slot 5	11
2.4.4	Slot 6	12
2.4.5	Slot 7	13
2.5	FID Slots	14
2.5.1	Slot 0	14
2.5.2	Slot 1	15
2.5.3	Slot 2	16
A	Summary	17
A.1	Status	17
A.2	Comments	17

1 Front

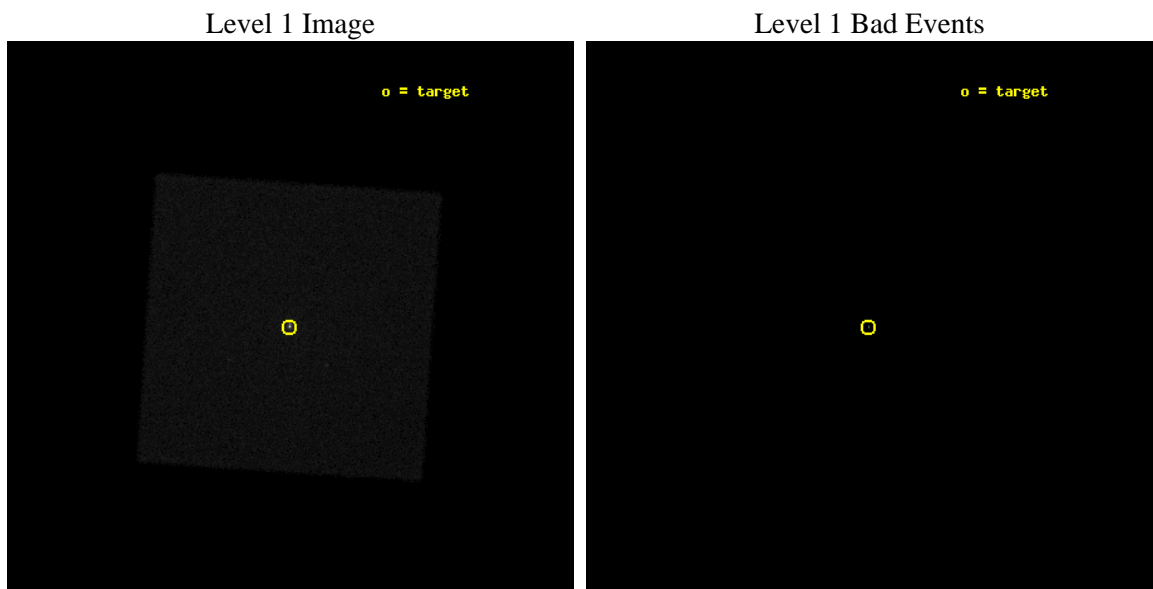
seq_num	300051	Sequence number
obs_id	1903	Observation id
title	THE X-RAY SOURCE POPULATION IN THE CORE OF M15	Proposal title
observer	Professor Philip Charles	Principal investigator
object	M15	Source name
ra_targ	322.492917	Observer's specified target RA [deg]
dec_targ	12.166806	Observer's specified target Dec [deg]
ra_nom	322.49113161095	Nominal RA [deg]
dec_nom	12.170483842814	Nominal Dec [deg]
roll_nom	138.89773915628	Nominal Roll [deg]
revision	4	Processing version of data
ontime	9150.4316079766	[s]
livetime	9096.2611122803	Ontime multiplied by DTCOR
l2events	321727	Number of level 2 events



2 OBI

2.1 OBI

2.1.1 Images



2.1.2 Parameters

obi_num	0	Obi number	sched_exp_time	9000.000000	[s] Scheduled observation exposure time
ascdsver	8.4.5	Processing system revision	ontime	9150.4316079766	[s]
caldbver	4.5.1.1	 	l1events	485105	Number of level 1 events
date	2012-09-20T05:04:30	Date and time of file creation			
revision	4	Processing version of data			

2.1.3 Events

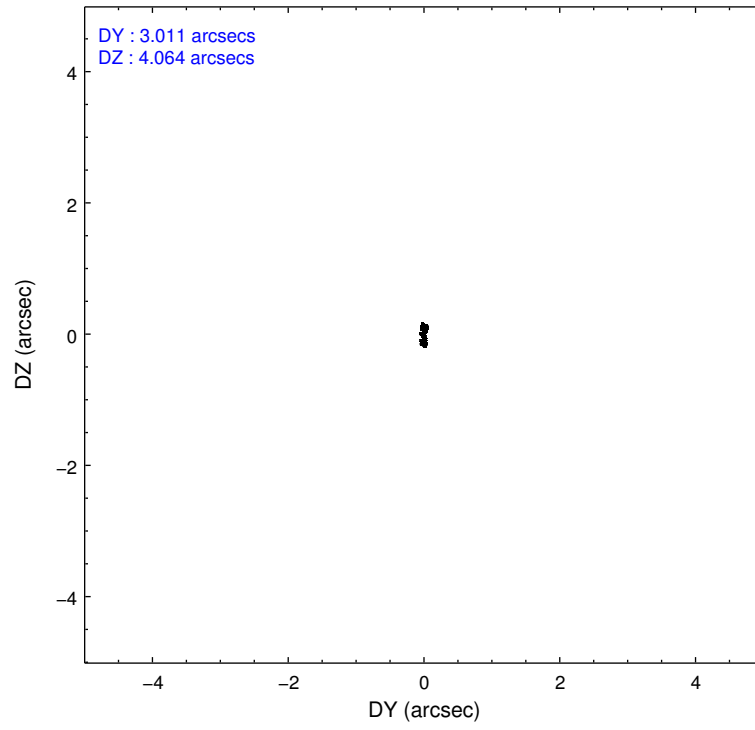
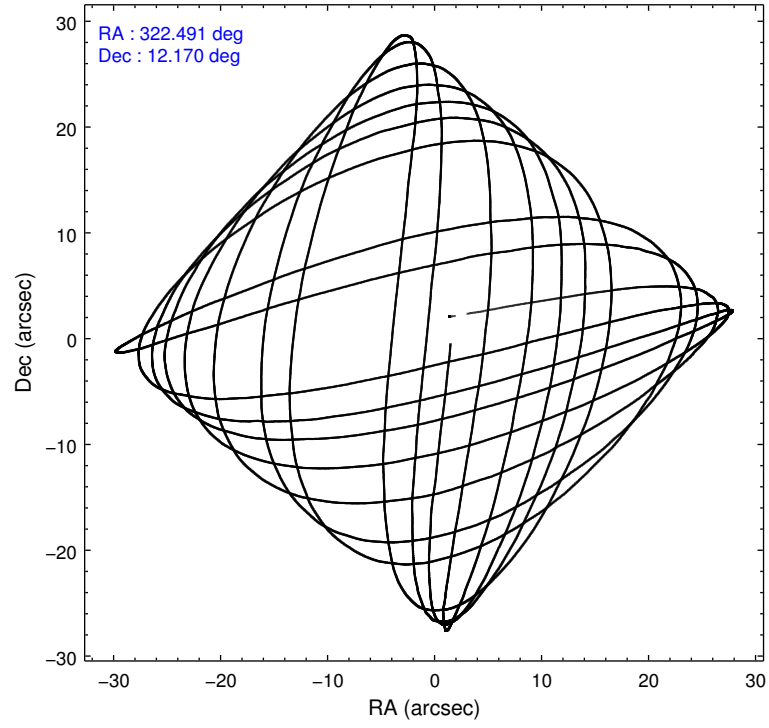
Level 1 Events

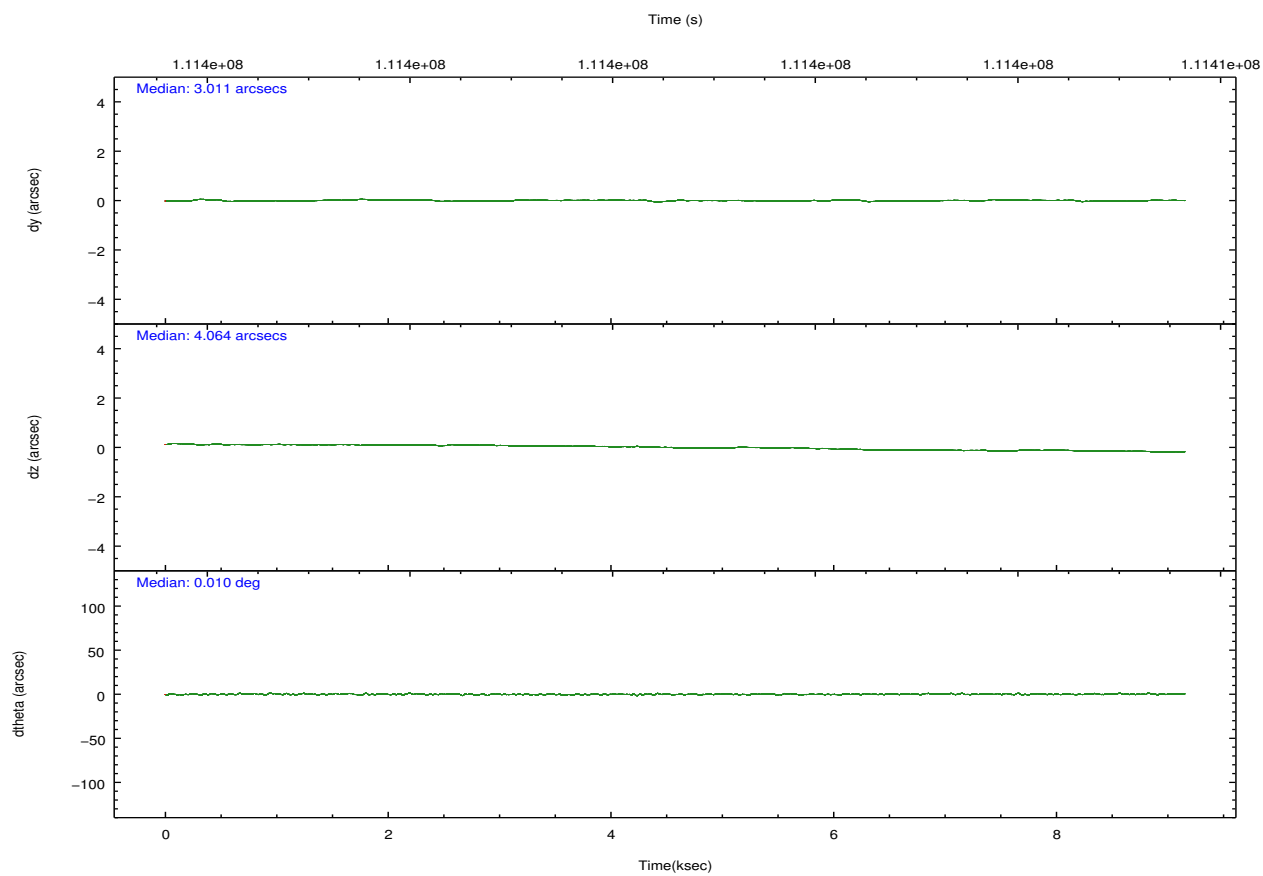
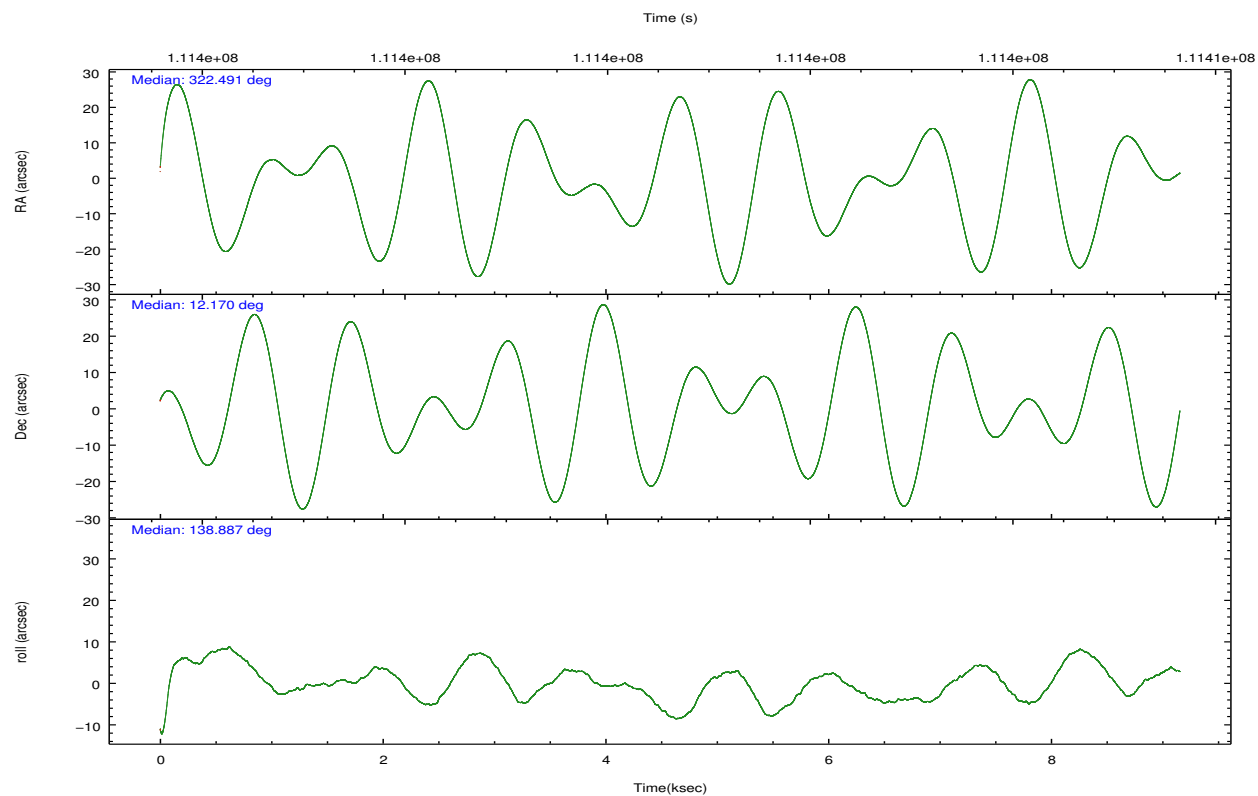
	segment 0
level 1 events	485105
rejected events	35659
rejected %	7%

2.2 Compared Parameters

Parameter	Planned	Actual	Parameter	Planned	Actual
Instrument	HRC	HRC	Obspar format version number	7	7
Detector	HRC-I	HRC-I	Obspar file type	PREDICTED	ACTUAL
Grating	NONE	NONE	Obspar update status	NONE	UPDATED
Data mode	OBSERVING	OBSERVING			
Observation mode	POINTING	POINTING			
[deg] Pointing RA	322.518358	322.4911316109466			
[deg] Pointing Dec	12.165939	12.17048384281384			
[deg] Pointing Roll	138.987509	138.8977391562836			
[mm] SIM focus pos	-1.040293	-1.038866356238299			
[mm] SIM defocus	0	0.001426264420575141			
[mm] SIM translation stage pos	126.985494	126.9829799899862			
[mm] SIM translation stage offset	0	0.002508901615314585			
Phase constraints	Y	Y			
[d] Phase period	0.712917	0.712917			
[d] Phase epoch (MJD)	50642.547000	50642.547000			
Phase start	0.900000	0.900000			
Phase end	0.100000	0.100000			
Phase start error	0.050000	0.050000			
Phase end error	0.050000	0.050000			
[s] Observation start time (MET)	111396194.184000	111395263.47321			
Observation start date	2001-07-13T07:22:10	2001-07-13T07:07:43			
[s] Observation end time (MET)	111405194.184000	111405882.98613			
Observation end date	2001-07-13T09:52:10	2001-07-13T10:04:42			

2.3 Aspect



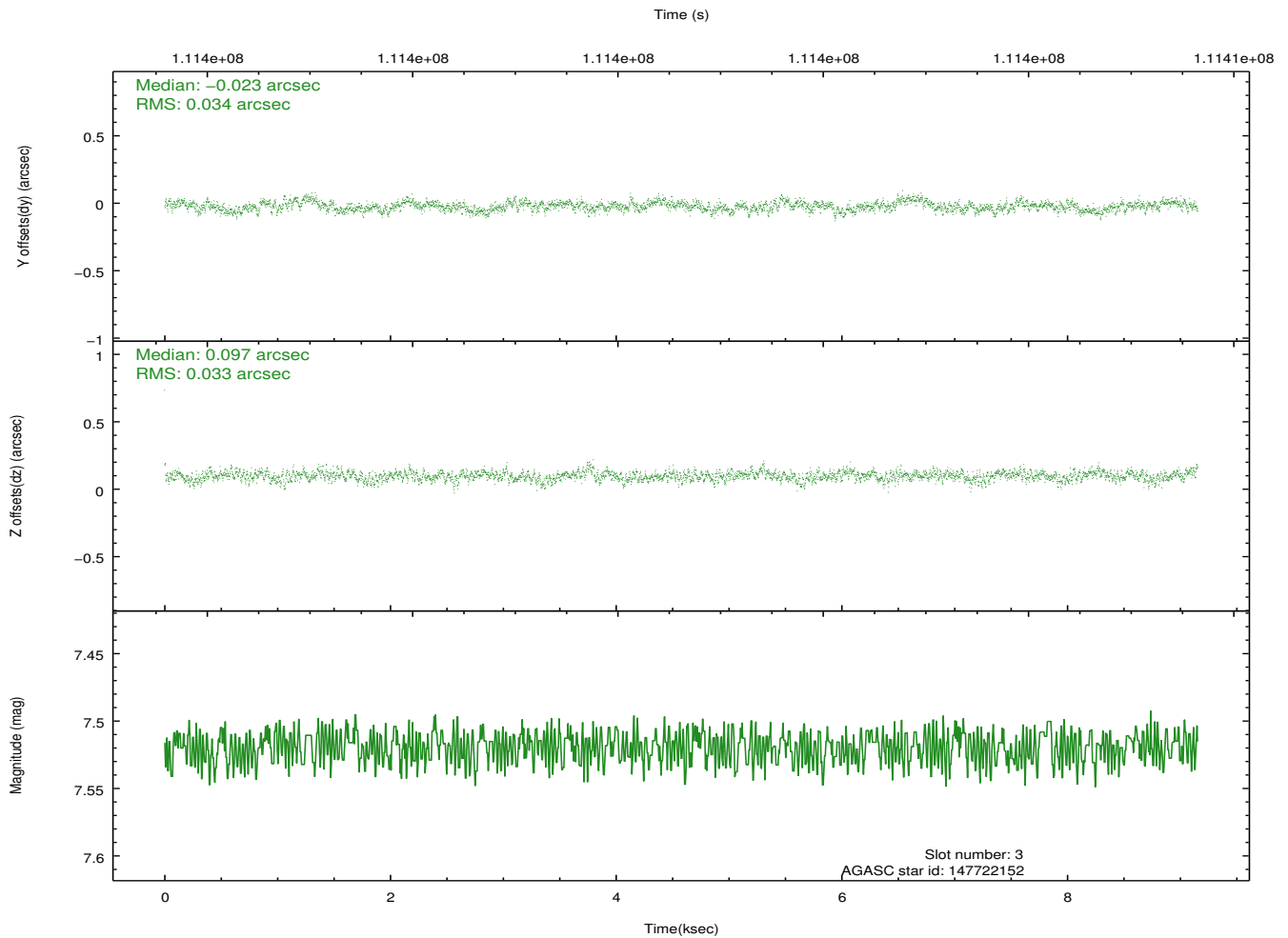
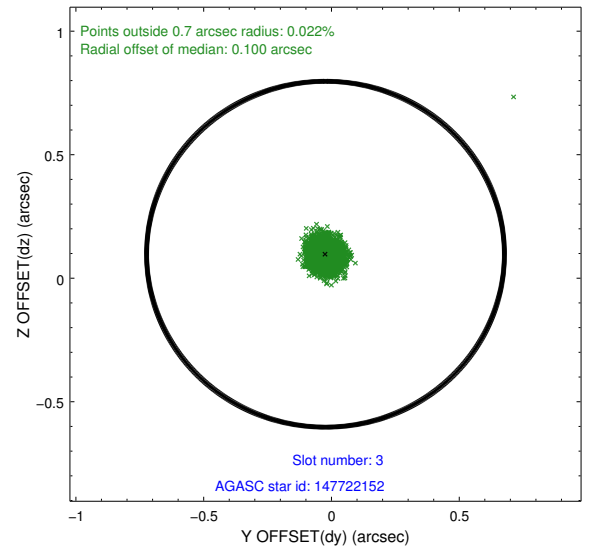
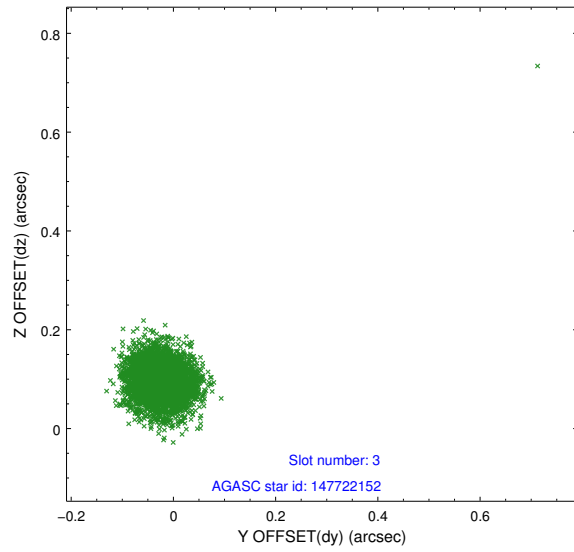


Slot Statistics

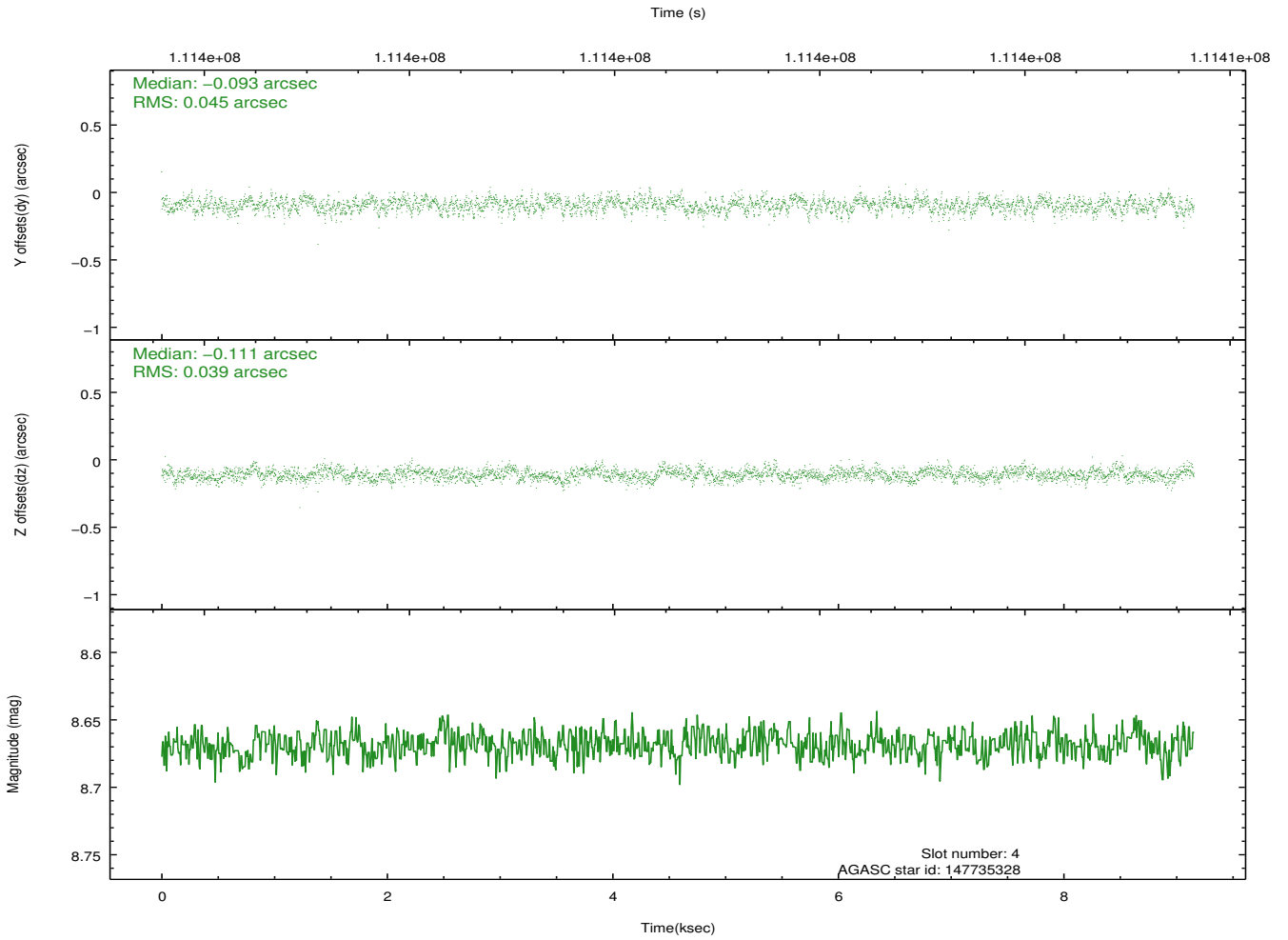
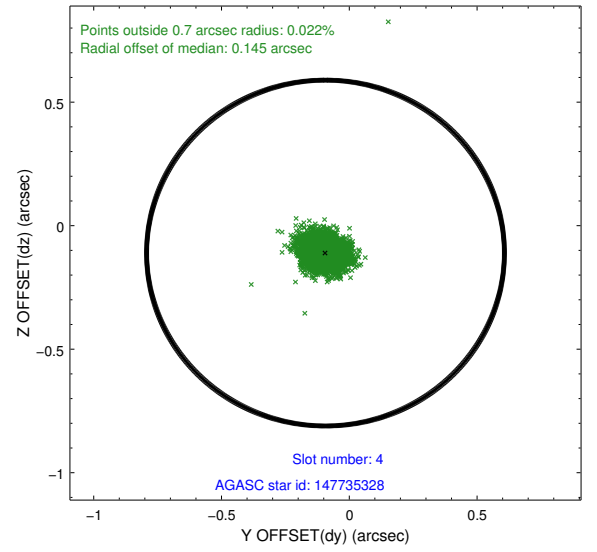
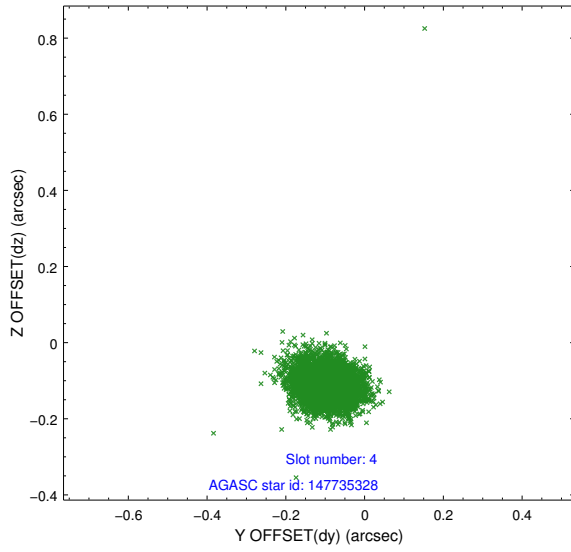
slot	status	id	mag	n_pts	med_dy	med_dz	dr1	dr2	ra	dec	mean_y	mean_z
0	FID	HRC-I-1	6.96	2232	0.059	0.065	0.007	0.011	0.000000	0.000000	-758.46	-1291.74
1	FID	HRC-I-3	7.04	2232	0.010	-0.088	0.008	0.013	0.000000	0.000000	-1187.28	1012.11
2	FID	HRC-I-4	6.98	2232	0.045	-0.067	0.006	0.011	0.000000	0.000000	1283.84	1010.71
3	GUIDE	147722152	7.52	4463	-0.023	0.097	0.048	0.078	322.735072	12.555367	346.36	-1557.75
4	GUIDE	147735328	8.67	4462	-0.093	-0.111	0.062	0.100	321.823462	12.214663	1962.32	1469.57
5	GUIDE	147731936	8.70	4465	0.083	0.073	0.054	0.090	322.421133	12.450297	930.85	-547.74
6	GUIDE	147732752	9.07	4465	0.021	-0.186	0.089	0.143	321.797195	11.999048	1524.52	2117.19
7	GUIDE	147733944	9.45	4464	0.017	0.127	0.102	0.164	322.398395	12.904544	2063.82	-1729.34

2.4 Star Slots

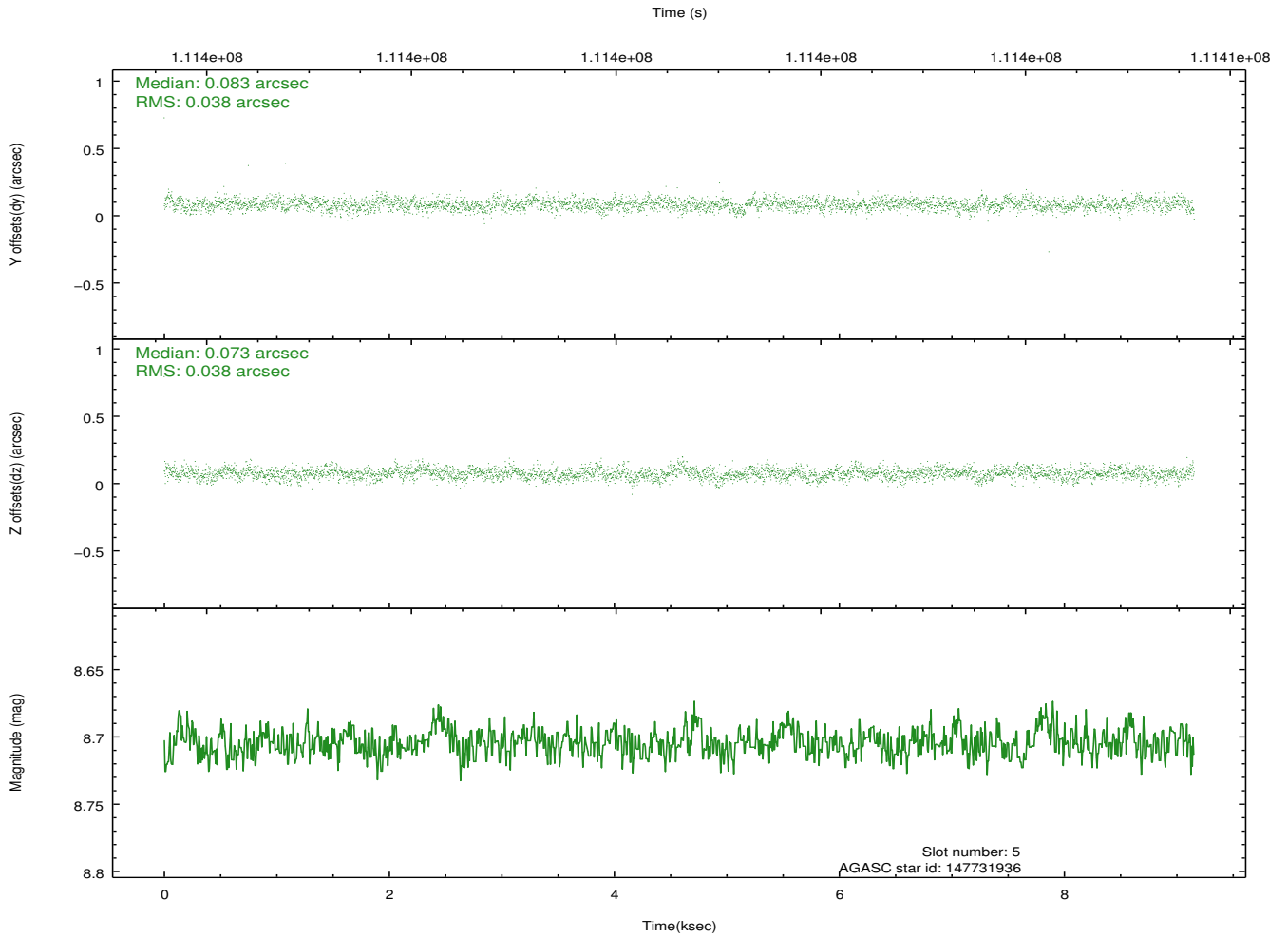
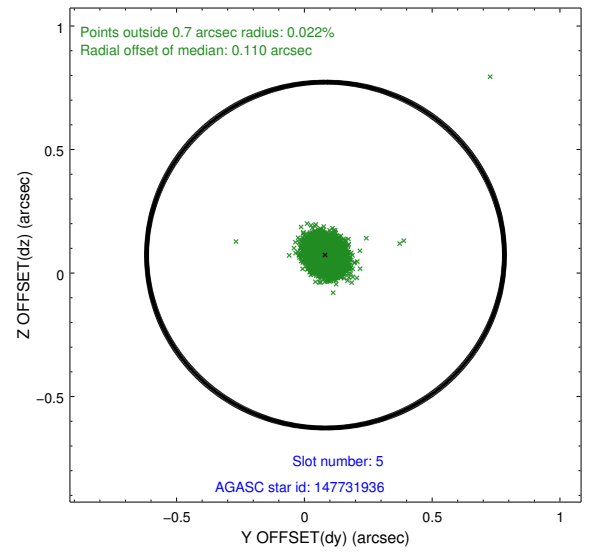
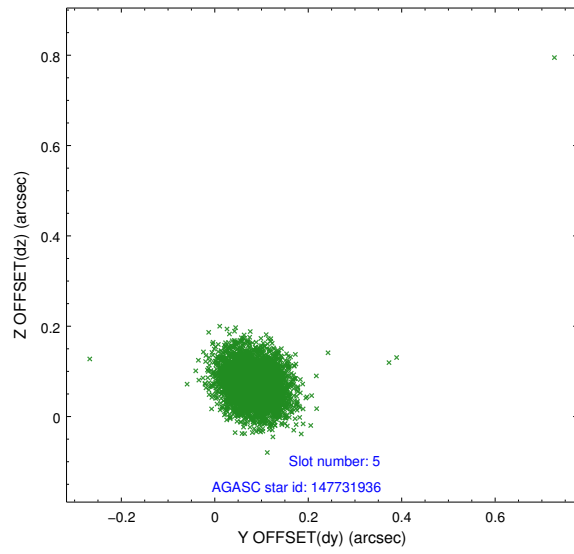
2.4.1 Slot 3



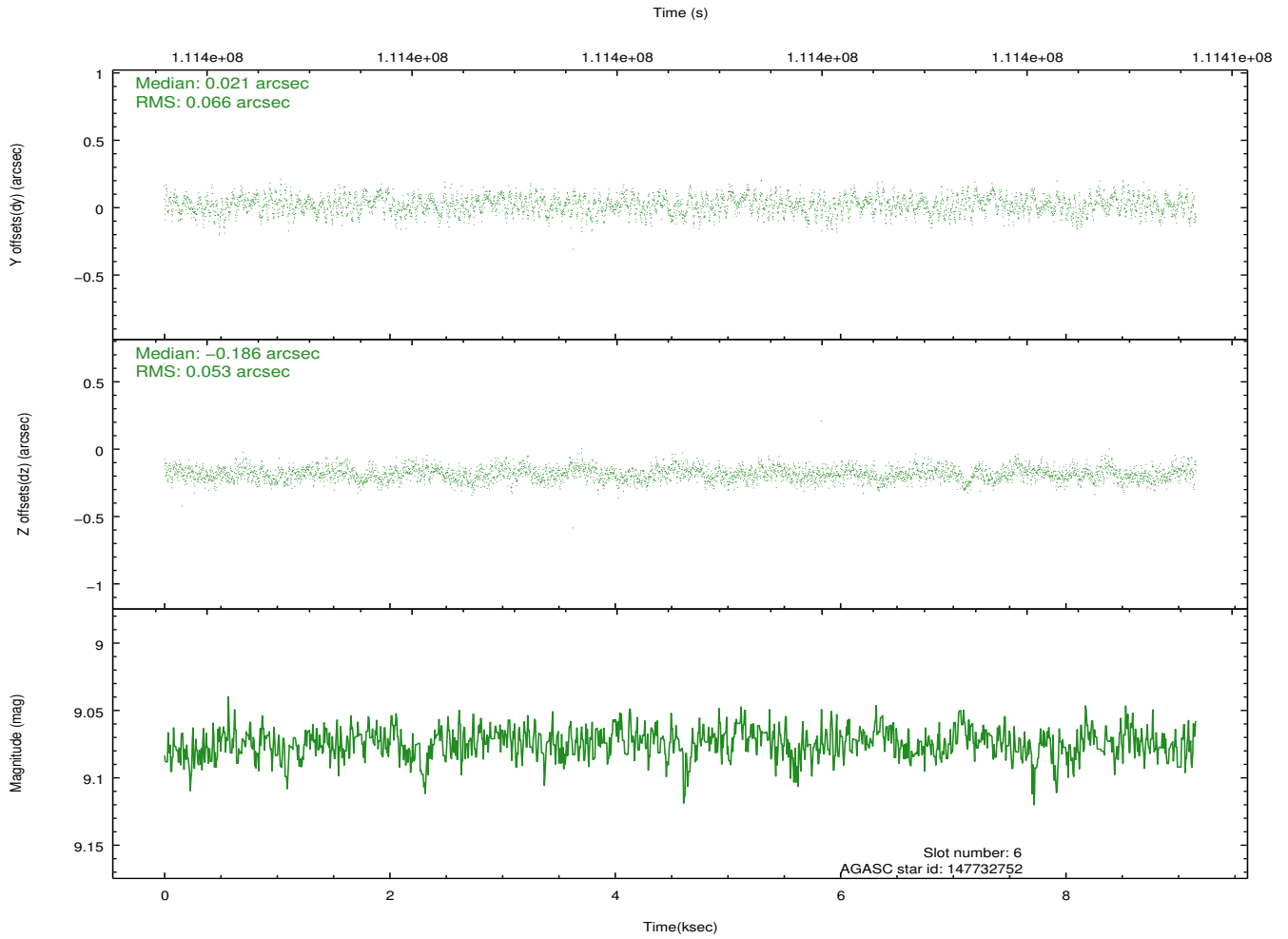
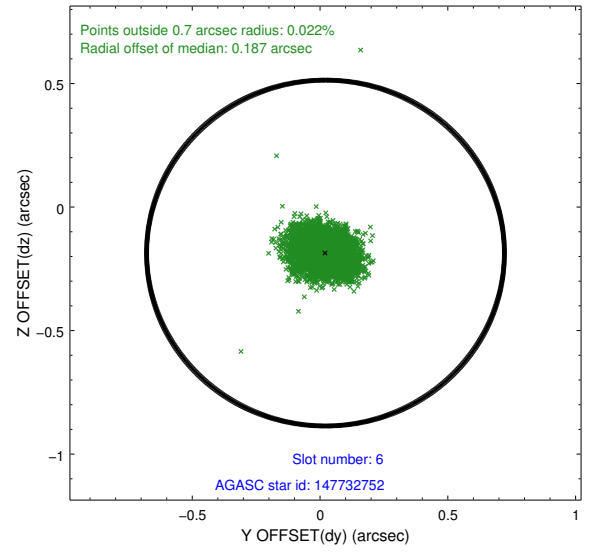
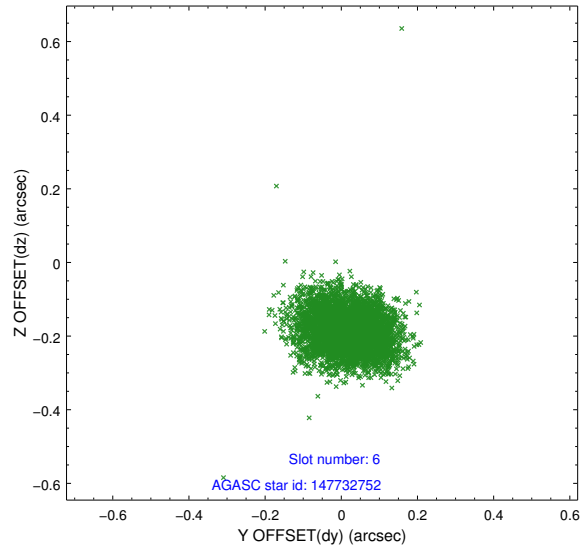
2.4.2 Slot 4



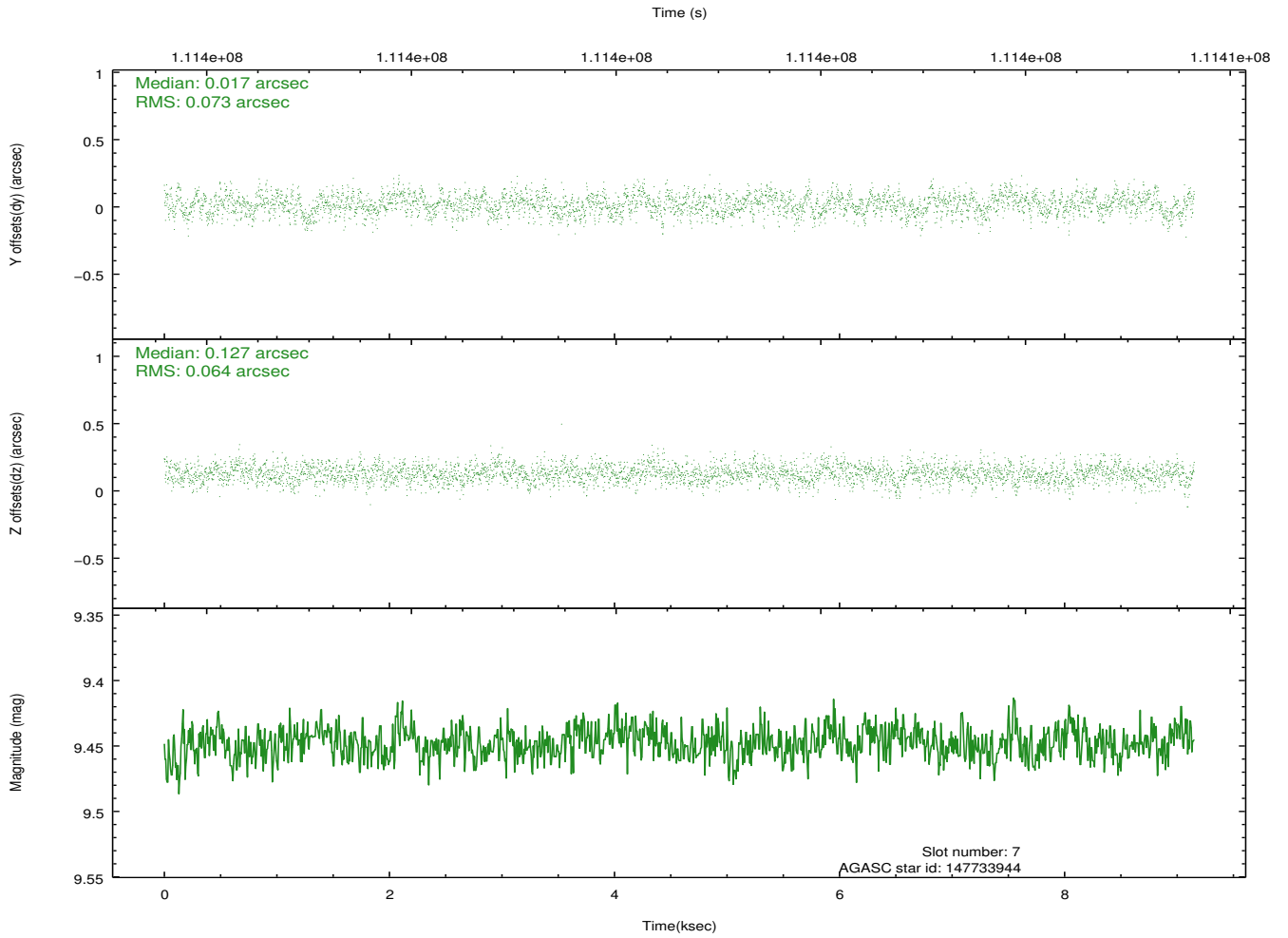
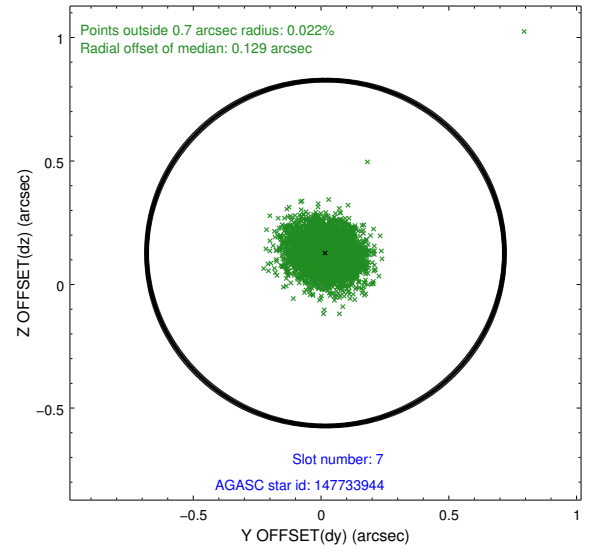
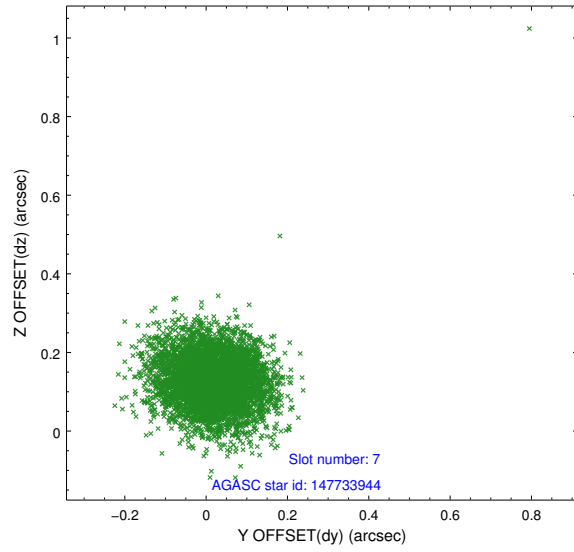
2.4.3 Slot 5



2.4.4 Slot 6

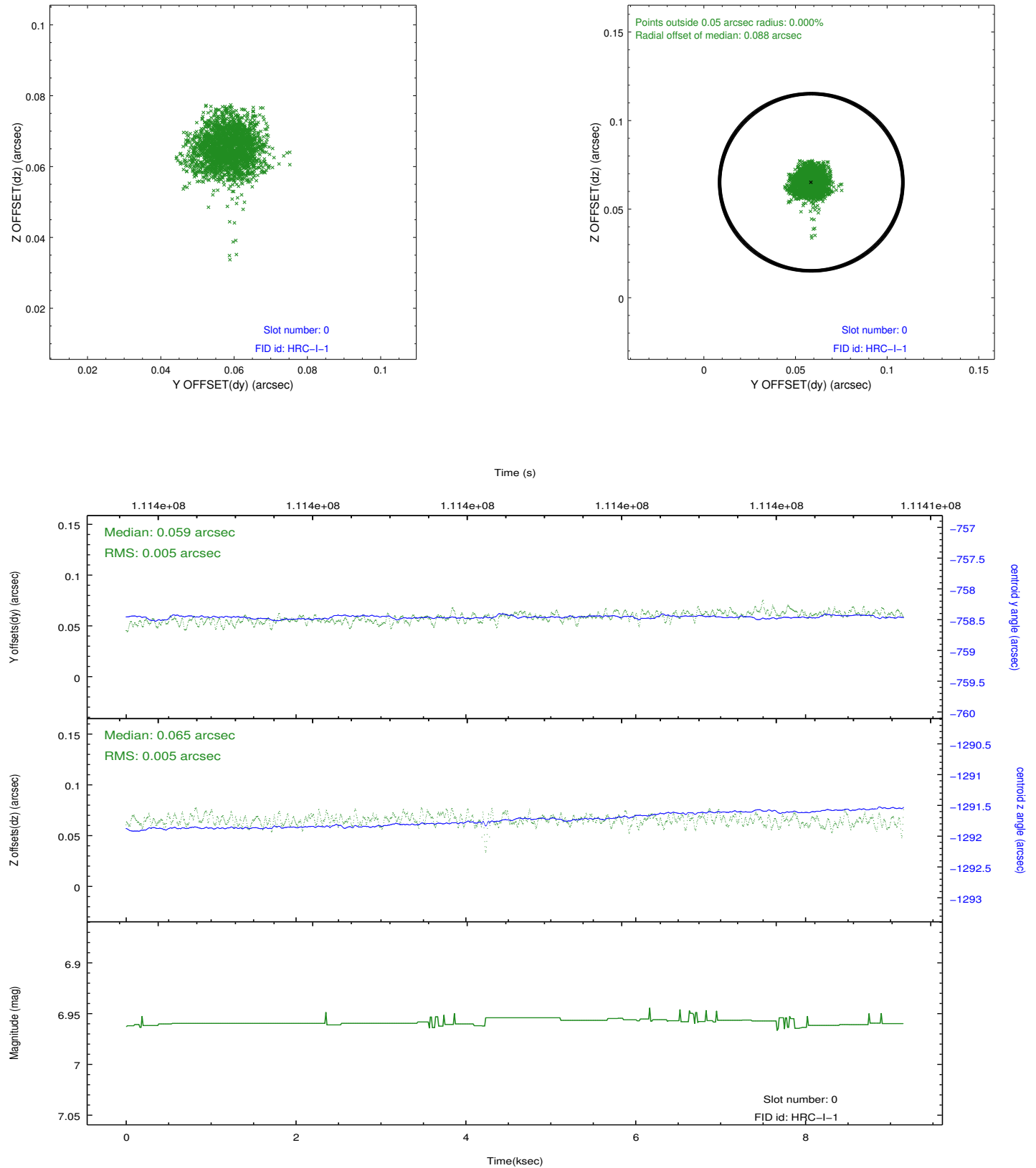


2.4.5 Slot 7

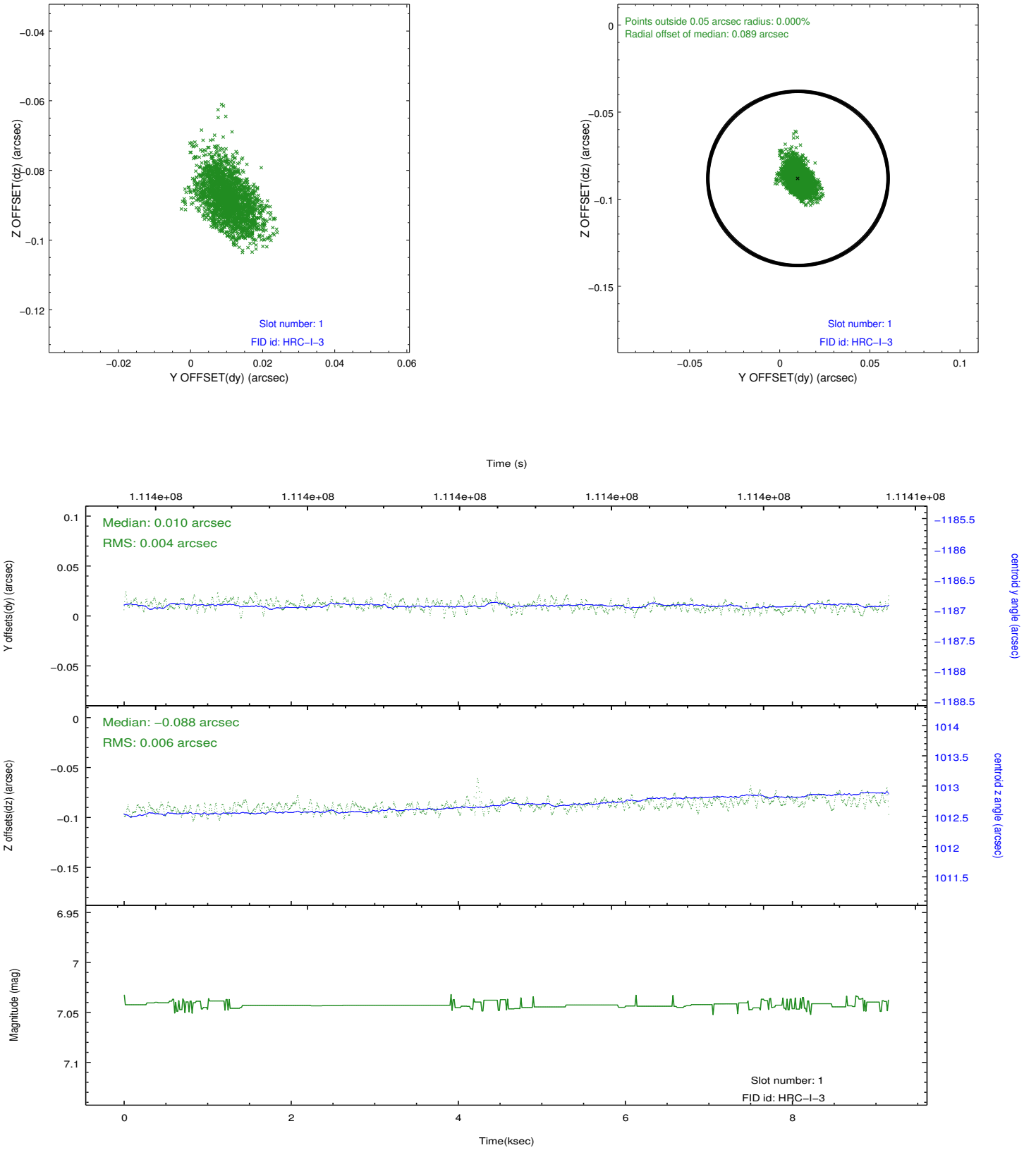


2.5 FID Slots

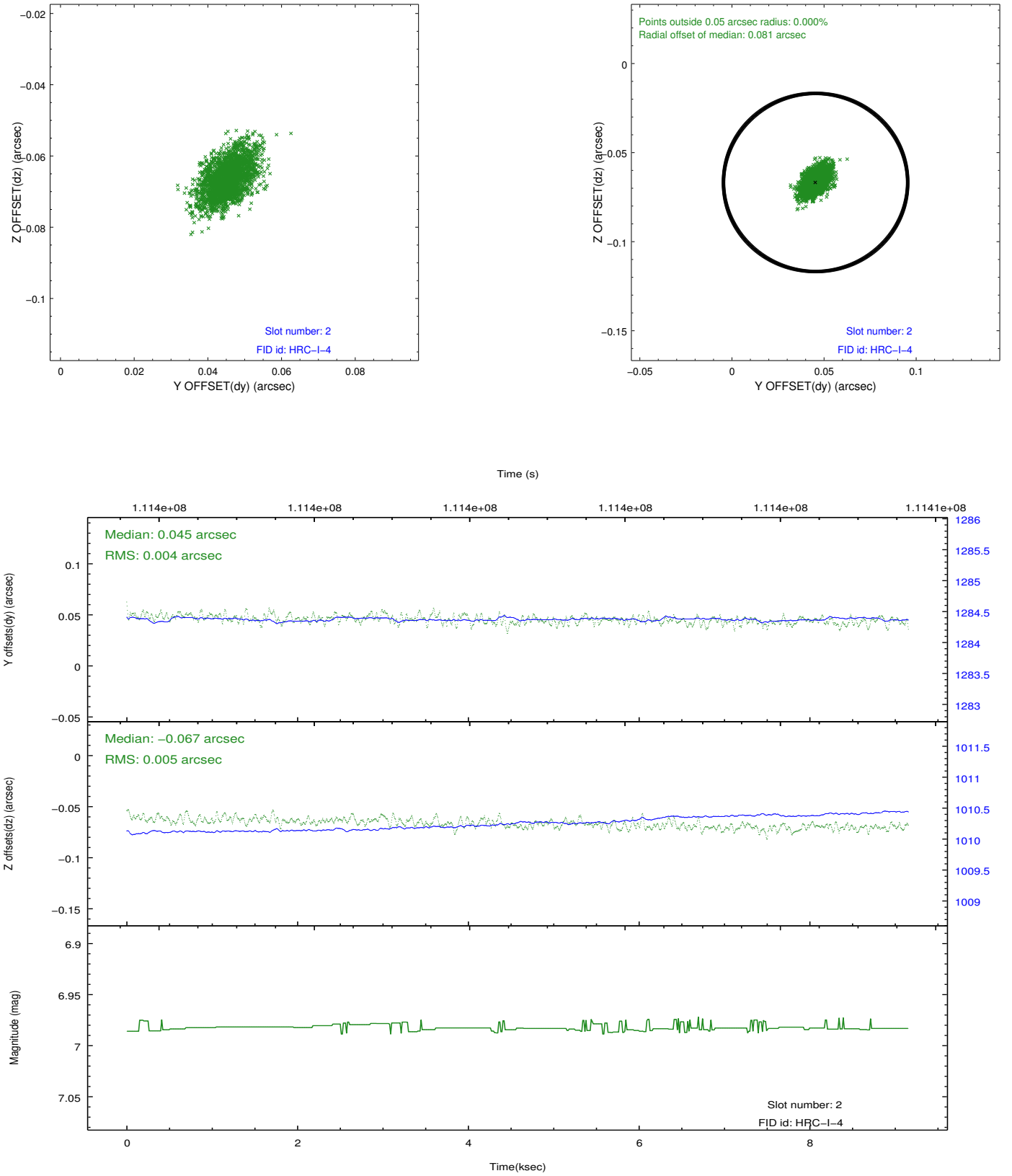
2.5.1 Slot 0



2.5.2 Slot 1



2.5.3 Slot 2



A Summary

A.1 Status

V&V Scientist	Jen Lauer
V&V Date (YYYY-MM-DD)	2012.09.21
V&V Edition	1
V&V Disposition and Status	OK
V&V Charge Time	9.1

A.2 Comments

Charge time for this ObsId remains at previous value of 9.1 ks although with the current processing the charge time would have been 9.15 ksec.

=====

Double source at aim point. Phase constraint met for first 4ksec of the observation but violated for the remainder of the obsid.