

V&V Reference Report

L2 ASCDS Version : 7.6.9

Observation 1899 - L2 Version 001
Chandra X-Ray Center

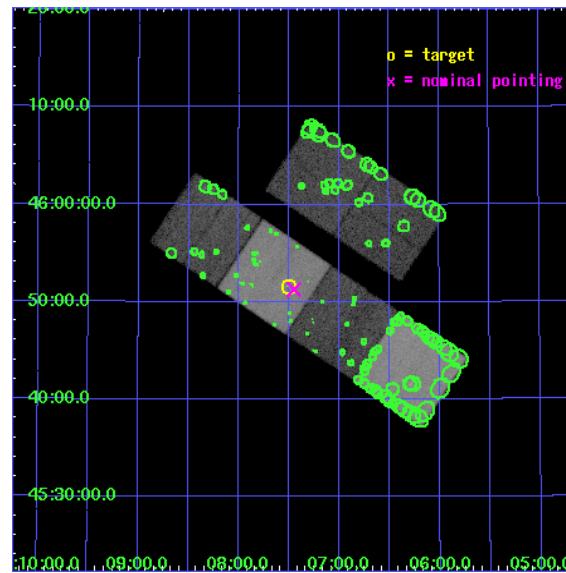
L2 Processing Date : Dec 15 2006

Contents

1	Front	2
2	OBI	3
2.1	OBI	3
2.1.1	Images	3
2.1.2	Bias	3
2.1.3	Parameters	4
2.1.4	Events	4
2.2	Compared Parameters	5
2.3	Aspect	6
2.4	Star Slots	9
2.4.1	Slot 3	9
2.4.2	Slot 4	10
2.4.3	Slot 5	11
2.4.4	Slot 6	12
2.4.5	Slot 7	13
2.5	FID Slots	14
2.5.1	Slot 0	14
2.5.2	Slot 1	15
2.5.3	Slot 2	16
3	Point Sources	17
A	Summary	18
A.1	Status	18
A.2	Comments	18

1 Front

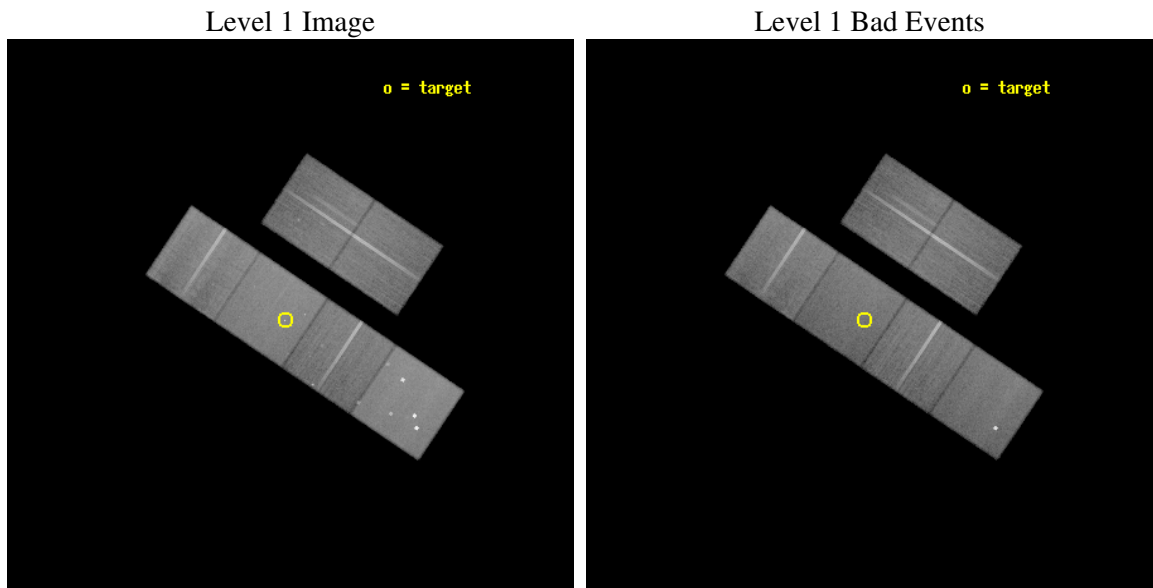
seq_num	300047
obs_id	1899
title	THE ORIGIN OF SOFT X-RAYS IN DQ HERCULIS
observer	Dr KOJI MUKAI
object	DQ HERCULIS
dtcycle	0
cycle	P
ra_targ	271.875833
dec_targ	45.858889
ra_nom	271.86298363688
dec_nom	45.854973824865
roll_nom	213.8404284662
revision	2
ontime	46963.200043738
livetime	46368.52372694
ontime2	46959.959083483
ontime3	46963.200043738
ontime5	46963.200043738
ontime6	46963.200043738
ontime7	46963.200043738
ontime8	46963.200043738
l2events	454181



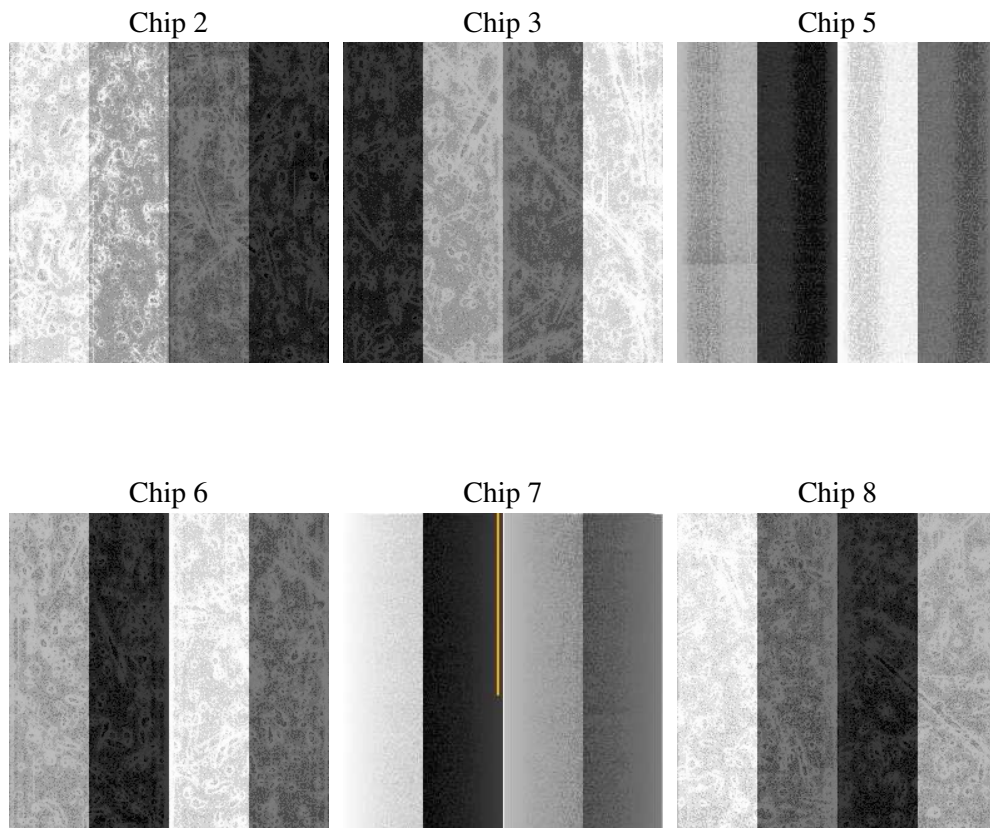
2 OBI

2.1 OBI

2.1.1 Images



2.1.2 Bias



2.1.3 Parameters

obi_num	1
ascdsver	7.6.9
caldsver	3.2.4
date	2006-12-15T21:02:13
revision	2

sched_exp_time	64000.000000
ontime	46968.557925239
ontime2	46965.316964984
ontime3	46968.557925239
ontime5	46968.557925239
ontime6	46968.557895318
ontime7	46968.557925239
ontime8	46968.557925239
l1events	2181707

2.1.4 Events

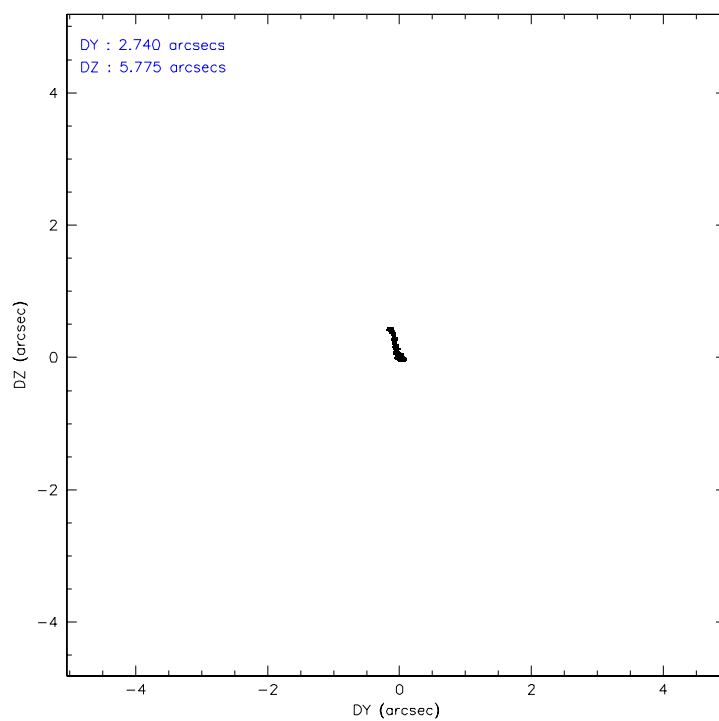
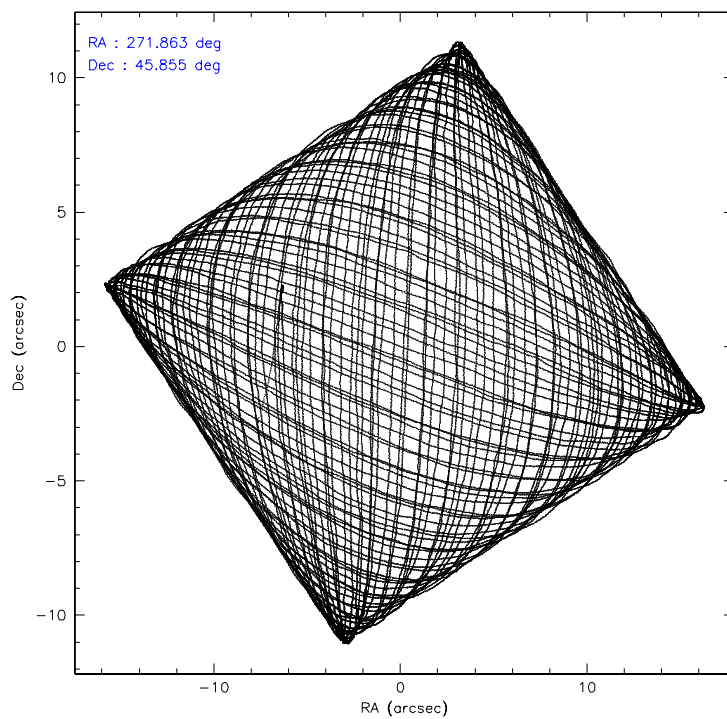
	ccd 2	ccd 3	ccd 5	ccd 6	ccd 7	ccd 8
level 1 events	313318	307512	462505	312208	397371	388793
rejected events	279252	272751	252045	276024	245213	310252
rejected %	89%	88%	54%	88%	61%	79%

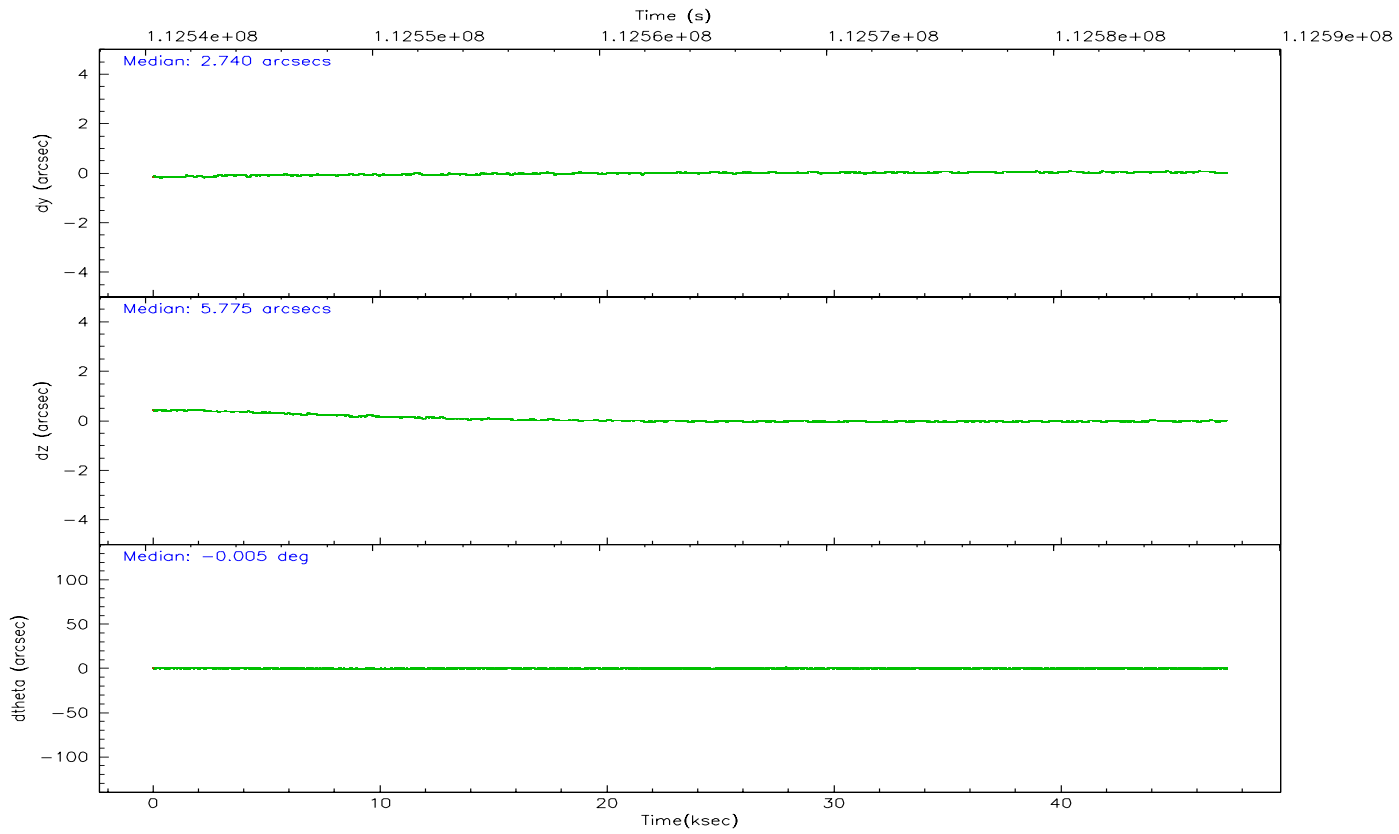
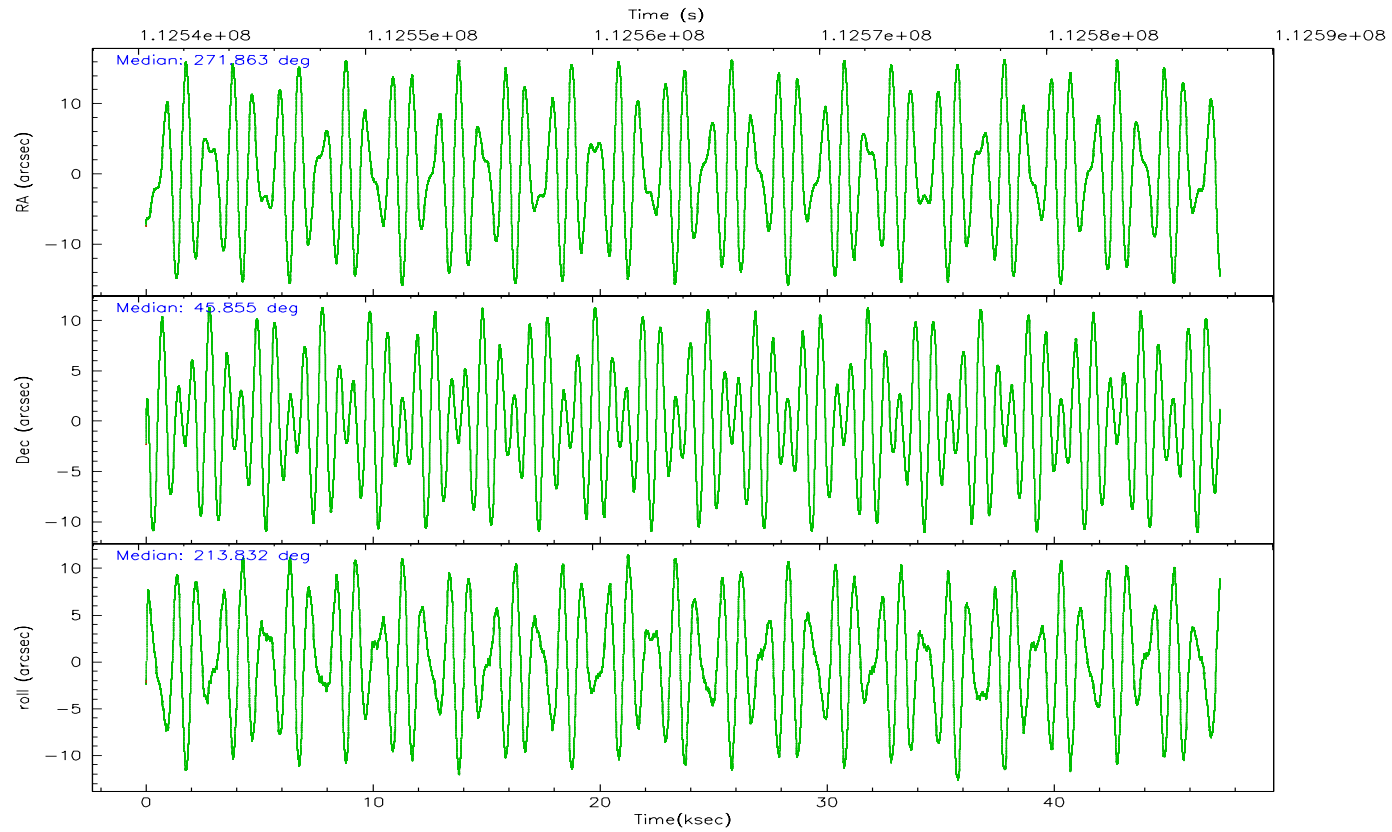
	ccd 2	ccd 3	ccd 5	ccd 6	ccd 7	ccd 8
grade 0 events	14306	15037	30606	15003	9989	24400
	4%	4%	6%	4%	2%	6%
grade 1 events	114	140	350	167	233	223
	0%	0%	0%	0%	0%	0%
grade 2 events	7265	6811	62431	7098	37357	17278
	2%	2%	13%	2%	9%	4%
grade 3 events	3258	3435	4365	3553	7892	8234
	1%	1%	0%	1%	1%	2%
grade 4 events	3204	3327	4086	3570	7694	7754
	1%	1%	0%	1%	1%	1%
grade 5 events	10758	11733	22266	13021	26194	16645
	3%	3%	4%	4%	6%	4%
grade 6 events	6038	6153	108991	6963	89235	20876
	1%	2%	23%	2%	22%	5%
grade 7 events	268375	260876	229410	262833	218777	293383
	85%	84%	49%	84%	55%	75%

2.2 Compared Parameters

Parameter	Planned	Actual	Parameter	Planned	Actual
Instrument	ACIS	ACIS	Obspar format version number	6	6
Detector	ACIS-235678	ACIS-235678	Obspar file type	PREDICTED	ACTUAL
Grating	NONE	NONE	Obspar update status	NONE	UPDATED
Data mode	FAINT	FAINT	Number of optional ACIS chips dropped	0	0
Observation mode	POINTING	POINTING	On-chip summing requested	N	N
Pointing RA	271.879892	271.8629836368763	Subarray requested	NONE	NONE
Pointing Dec	45.879600	45.85497382486456	Alternating exposures requested	N	N
Pointing Roll	213.671670	213.8404284662028	Primary exposure time	0.000000	3.2
SIM focus pos (mm)	-0.684267	-0.6828225247311905			
SIM defocus (mm)	0	0.001444936568705701			
SIM translation stage pos (mm)	-190.132523	-190.1425803651734			
SIM translation stage offset (mm)	0	0.01005778216563158			
Observation start time	112540649.184000	112539618.10552			
Observation start date	2001-07-26T13:16:25	2001-07-26T13:00:18			
Observation end time	112604649.184000	112588286.13243			
Observation end date	2001-07-27T07:03:05	2001-07-27T02:31:26			
Read mode	TIMED	TIMED			

2.3 Aspect



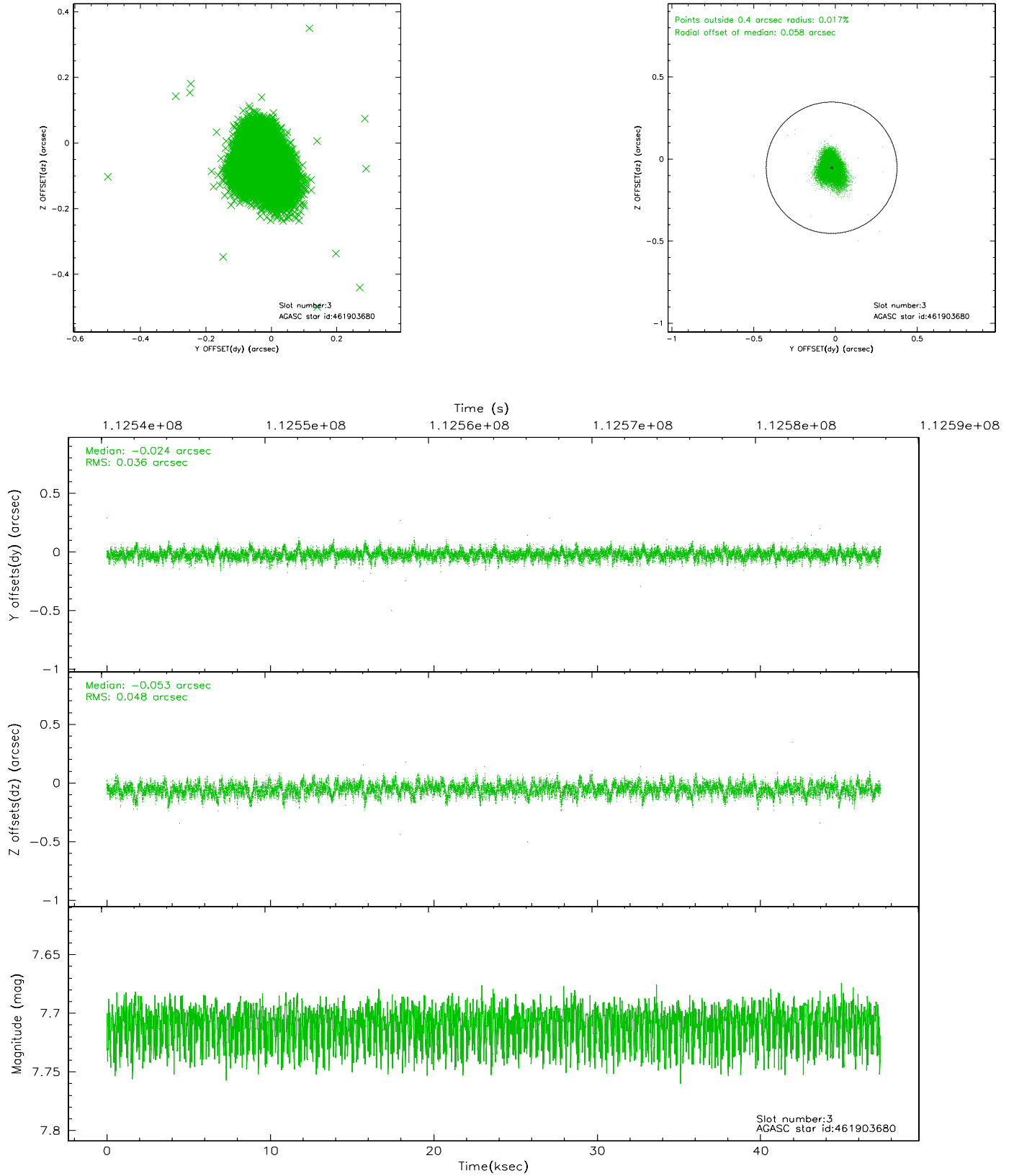


Slot Statistics

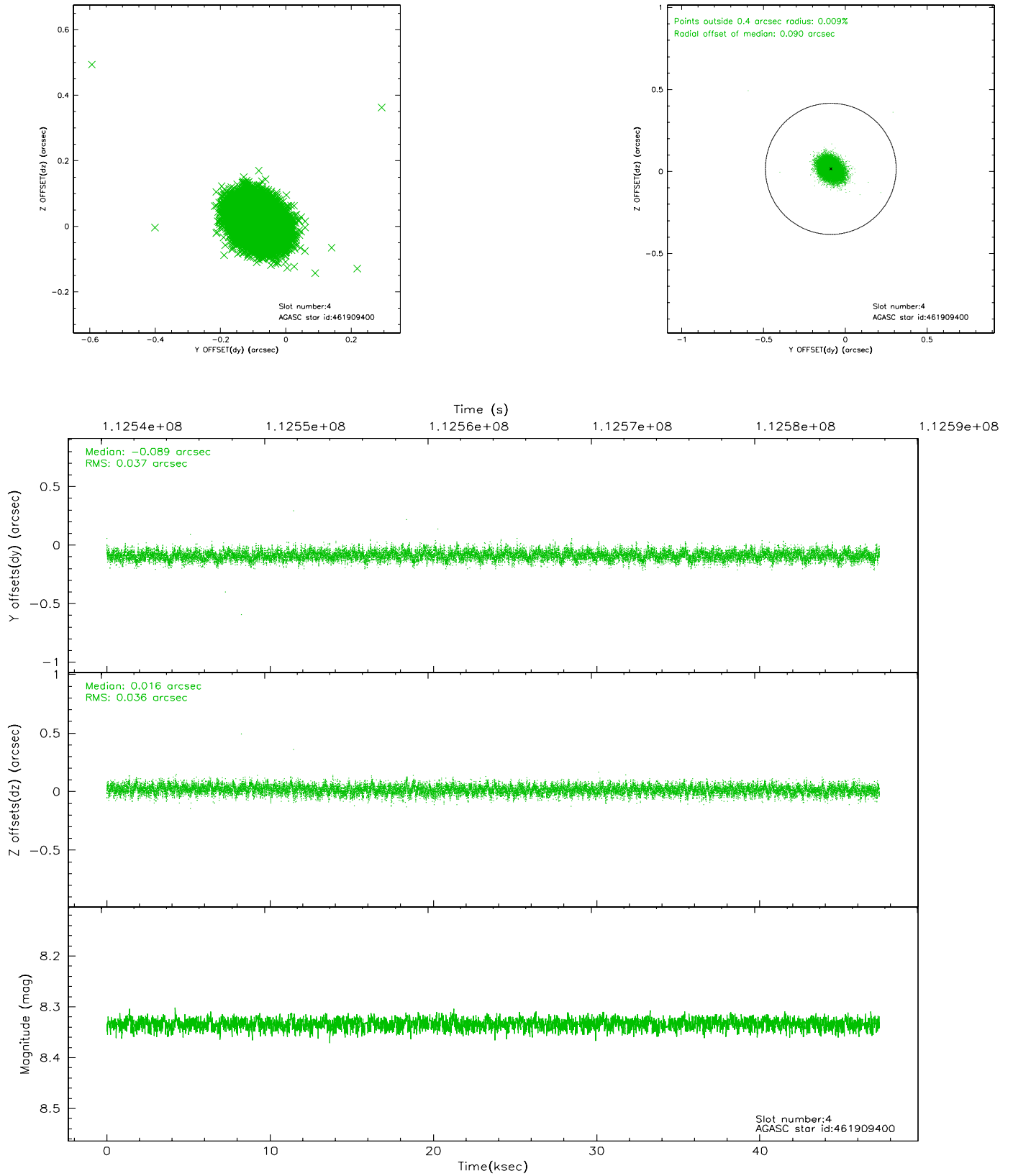
slot	status	id	mag	n_pts	med_dy	med_dz	dr1	dr2	ra	dec	mean_y	mean_z
0	FID	ACIS-S-2	7.12	11543	-0.018	0.033	0.009	0.019	0.000000	0.000000	-755.33	-1726.92
1	FID	ACIS-S-4	7.20	11543	-0.086	-0.000	0.009	0.025	0.000000	0.000000	2157.83	181.62
2	FID	ACIS-S-5	7.24	11543	0.072	-0.024	0.009	0.017	0.000000	0.000000	-1808.15	175.15
3	GUIDE	461903680	7.71	23086	-0.024	-0.053	0.061	0.108	271.661765	46.273277	-334.34	-1480.62
4	GUIDE	461909400	8.33	23082	-0.089	0.016	0.054	0.089	272.212627	45.772711	-483.23	782.41
5	GUIDE	461910784	8.69	23078	-0.030	-0.125	0.057	0.094	271.578651	45.658398	1071.37	241.86
6	GUIDE	461911872	8.78	23077	0.106	0.092	0.066	0.105	271.267939	45.702917	1629.93	-327.74
7	GUIDE	461904776	9.15	23074	0.037	0.074	0.089	0.143	272.396559	45.830962	-983.89	861.25

2.4 Star Slots

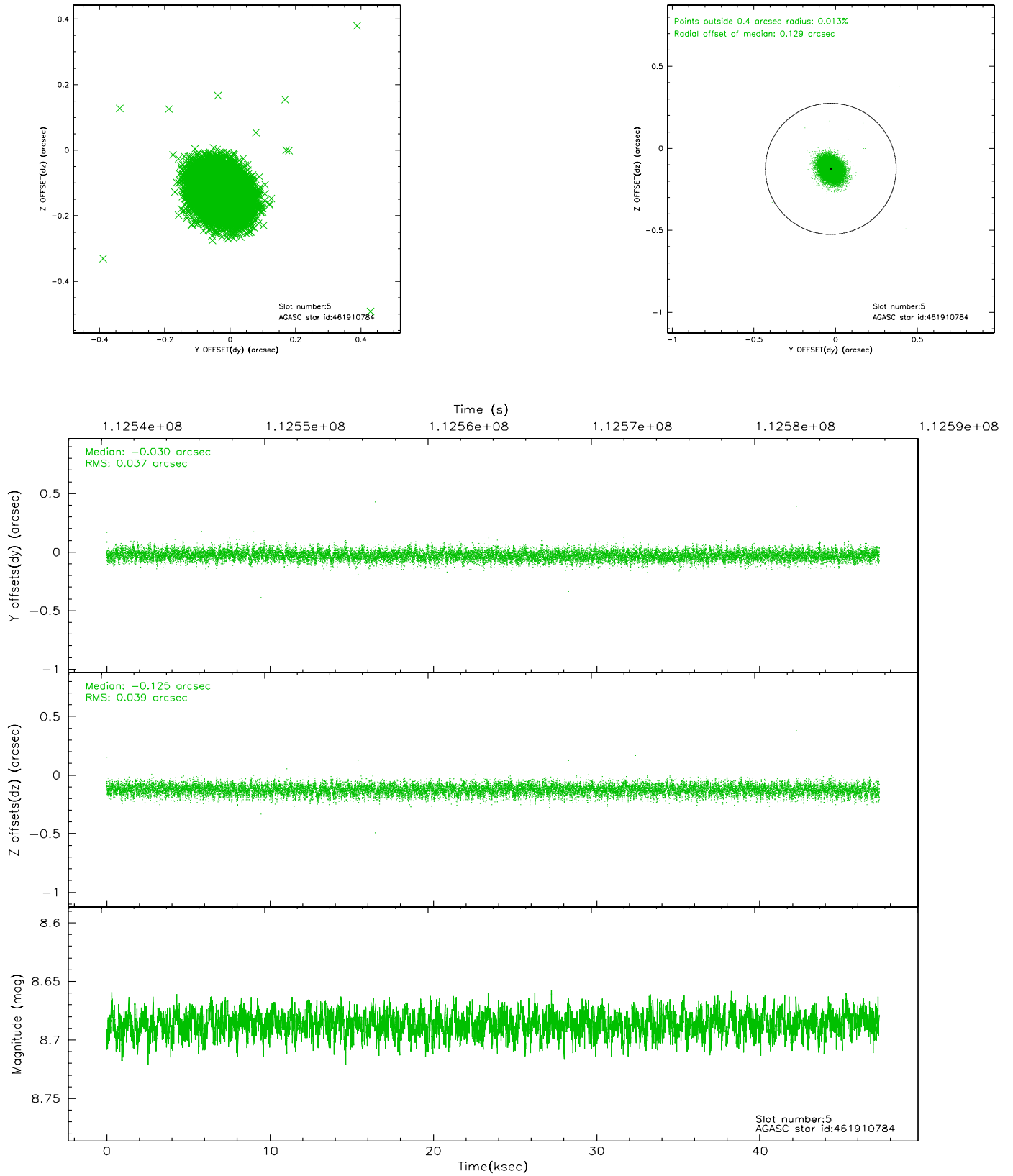
2.4.1 Slot 3



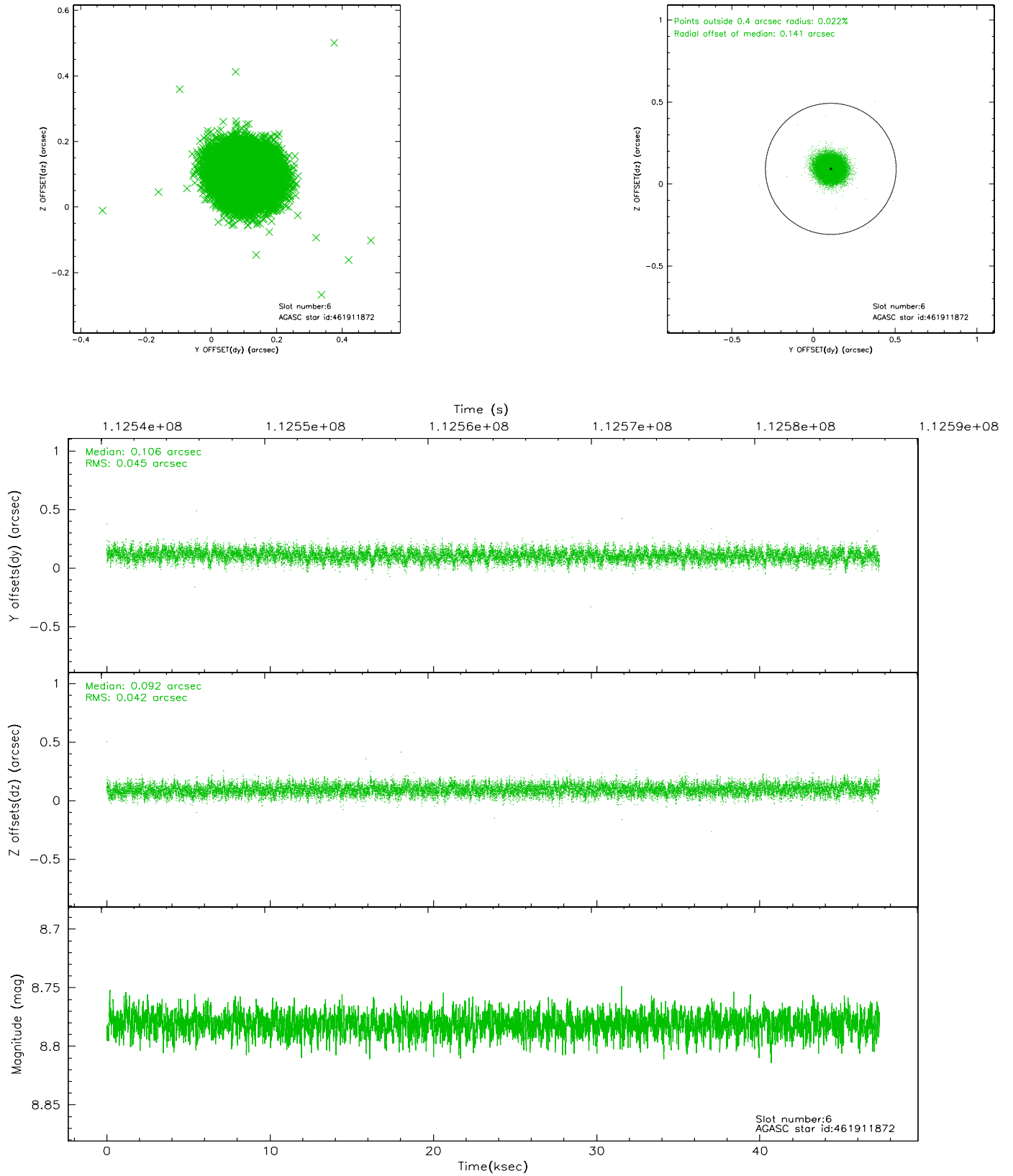
2.4.2 Slot 4



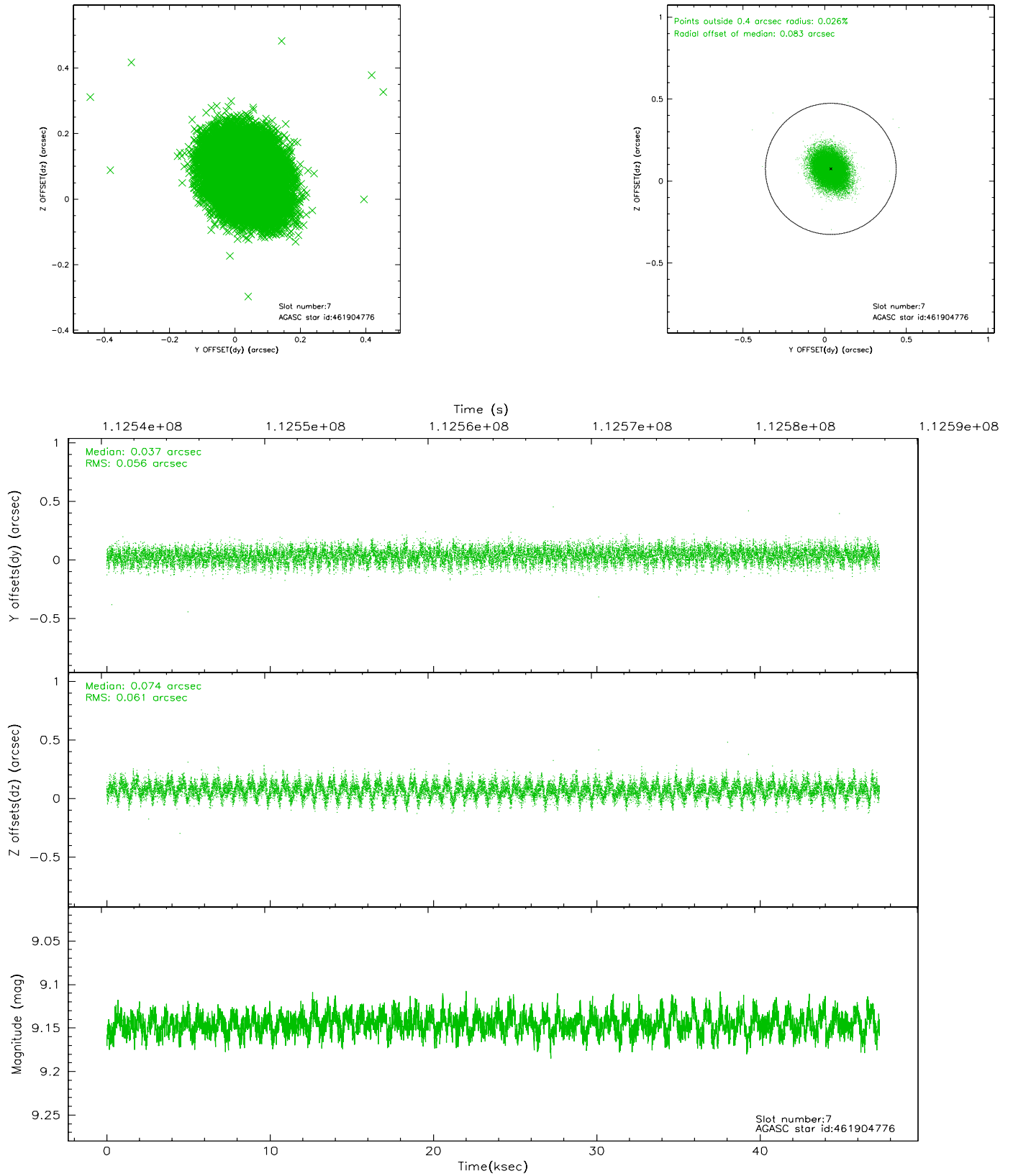
2.4.3 Slot 5



2.4.4 Slot 6

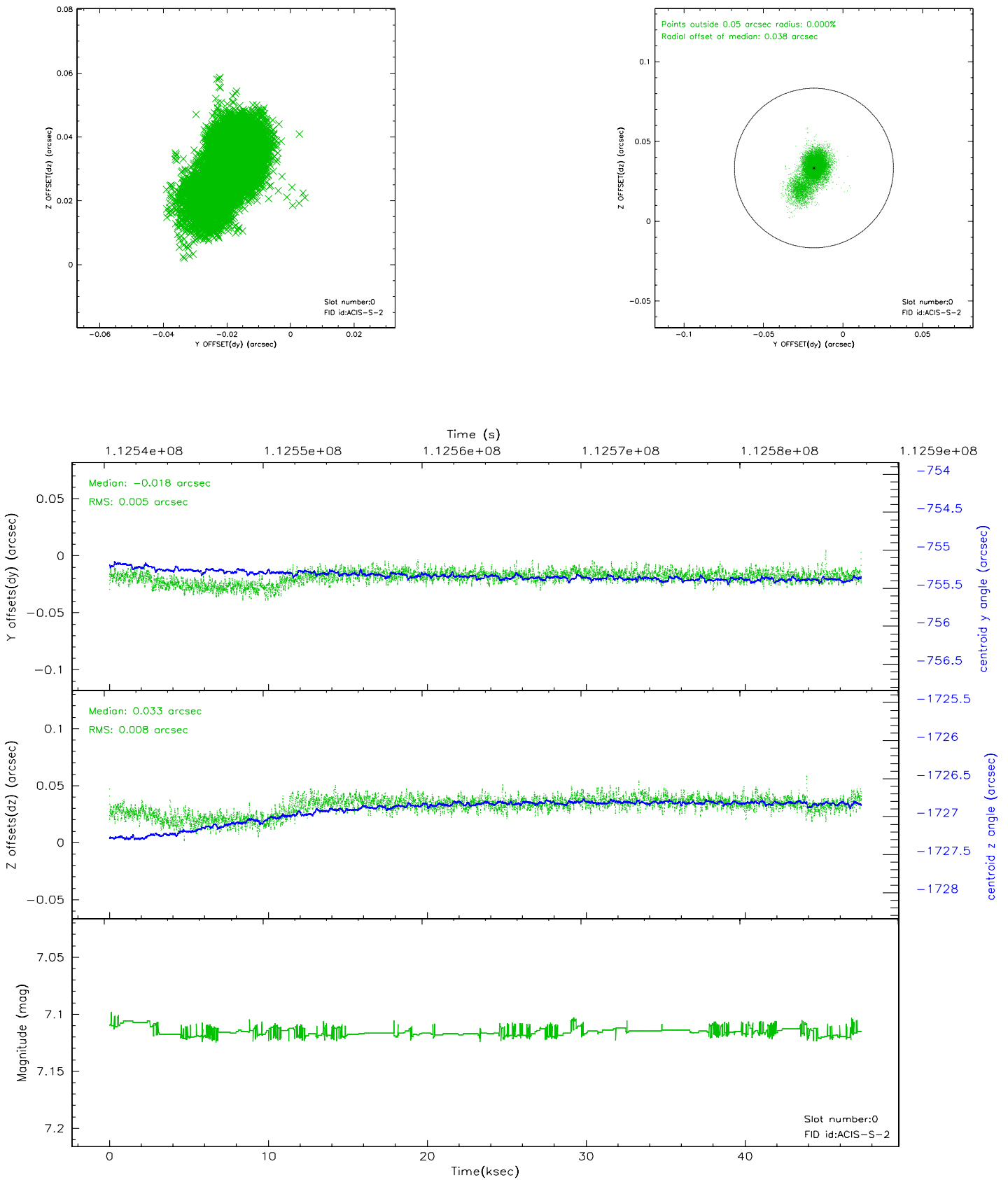


2.4.5 Slot 7

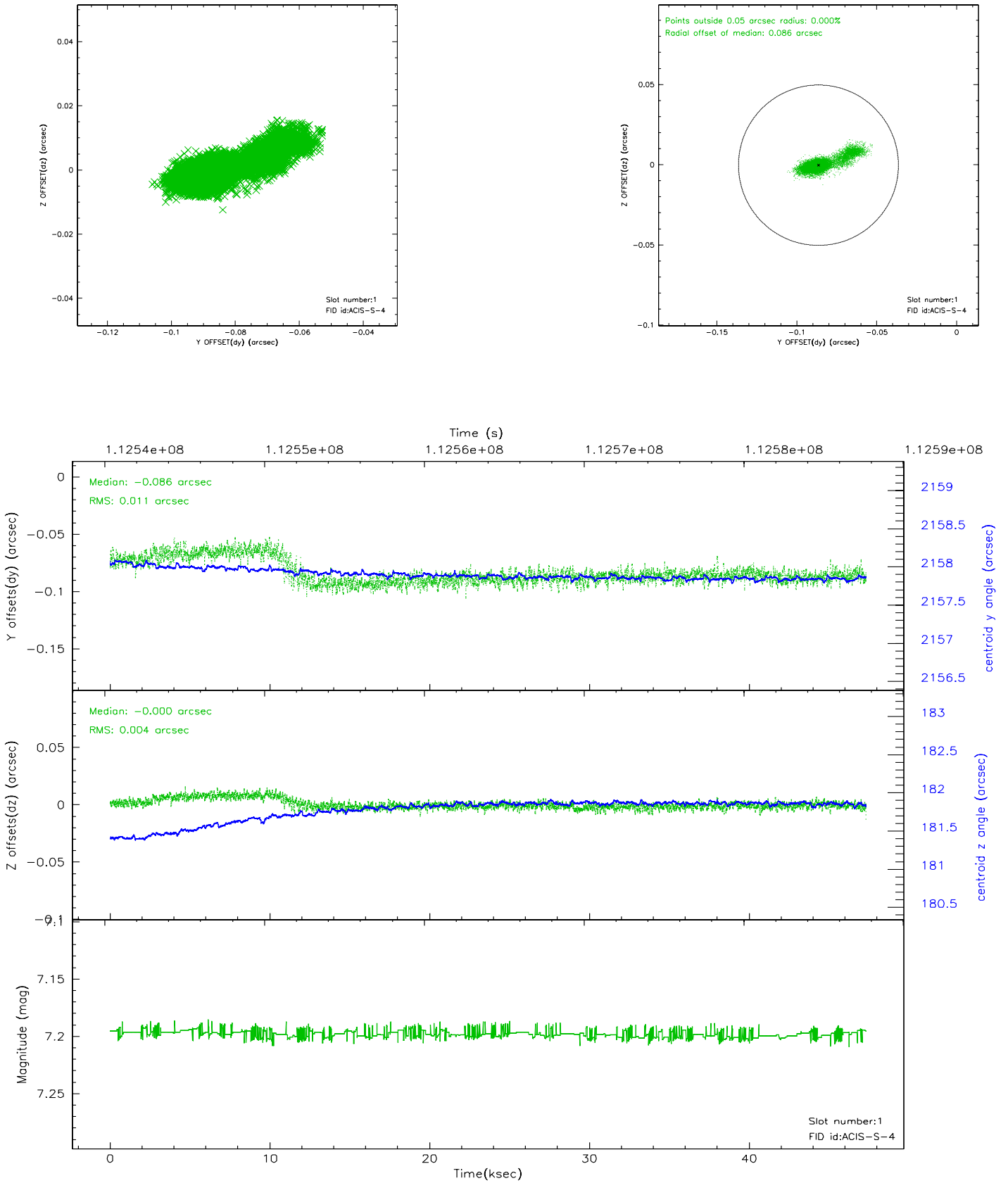


2.5 FID Slots

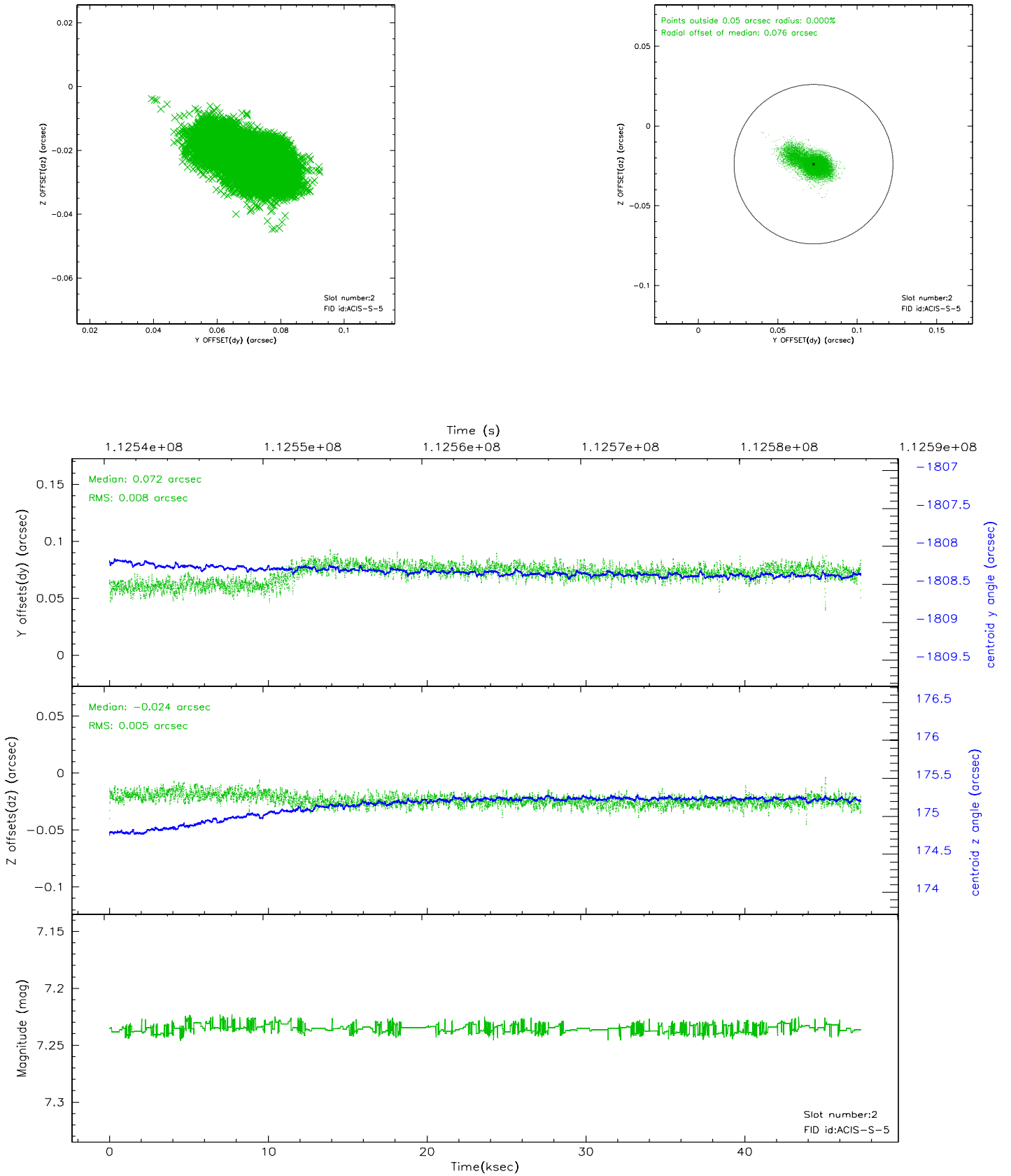
2.5.1 Slot 0



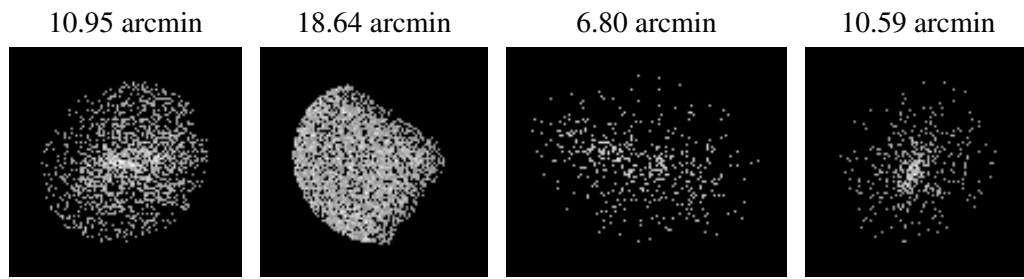
2.5.2 Slot 1



2.5.3 Slot 2



3 Point Sources



A Summary

A.1 Status

V&V Scientist	Beth Sundheim
V&V Date (YYYY-MM-DD)	2006.12.17
V&V Edition	1
V&V Disposition and Status	OK
V&V Charge Time	46.963

A.2 Comments

Remaining exposure time completed with obsid 2503.