

V&V Reference Report

L2 ASCDS Version : 7.6.8.1

Observation 972 - L2 Version 001
Chandra X-Ray Center

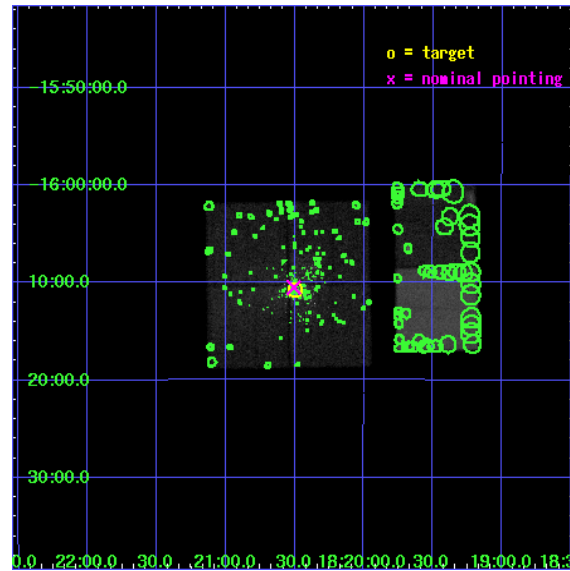
L2 Processing Date : Sep 6 2006

Contents

1	Front	2
2	OBI	3
2.1	OBI	3
2.1.1	Images	3
2.1.2	Bias	3
2.1.3	Parameters	4
2.1.4	Events	4
2.2	Compared Parameters	5
2.3	Aspect	6
2.4	Star Slots	9
2.4.1	Slot 3	9
2.4.2	Slot 4	10
2.4.3	Slot 5	11
2.4.4	Slot 6	12
2.4.5	Slot 7	13
2.5	FID Slots	14
2.5.1	Slot 0	14
2.5.2	Slot 1	15
2.5.3	Slot 2	16
3	Point Sources	17
A	Summary	18
A.1	Status	18
A.2	Comments	18

1 Front

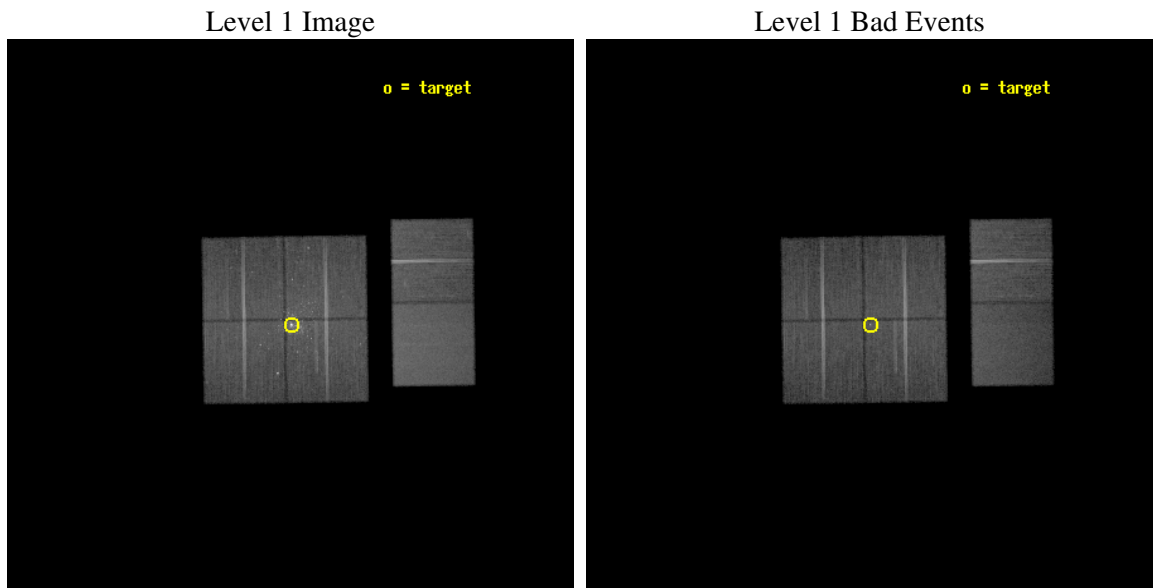
seq_num	200079
obs_id	972
title	OBSERVATION OF M17
observer	Professor Gordon Garmire
object	M17
dtcycle	0
cycle	P
ra_targ	275.124583
dec_targ	-16.179306
ra_nom	275.12655364418
dec_nom	-16.175021224
roll_nom	89.186858777713
revision	2
ontime	39942.359076947
livetime	39436.584875913
ontime0	39945.600037202
ontime1	39945.600037202
ontime2	39945.600037202
ontime3	39942.359076947
ontime6	39945.600037202
ontime7	39945.600037202
l2events	332154



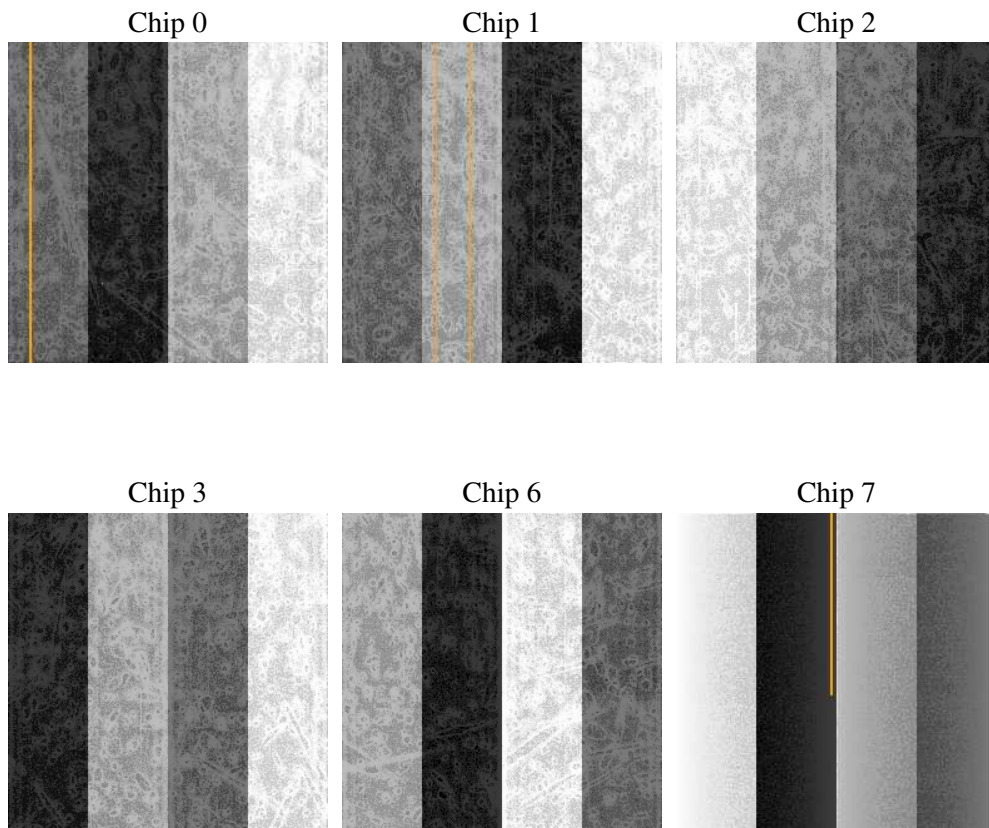
2 OBI

2.1 OBI

2.1.1 Images



2.1.2 Bias



2.1.3 Parameters

obi_num	2
ascdsver	7.6.8.1
caldsver	3.2.3
date	2006-09-06T07:13:41
revision	2

sched_exp_time	40000.000000
ontime	39948.550035566
ontime0	39951.791015729
ontime1	39951.791015729
ontime2	39951.791015729
ontime3	39948.550035566
ontime6	39951.791015729
ontime7	39951.791015729
l1events	1690196

2.1.4 Events

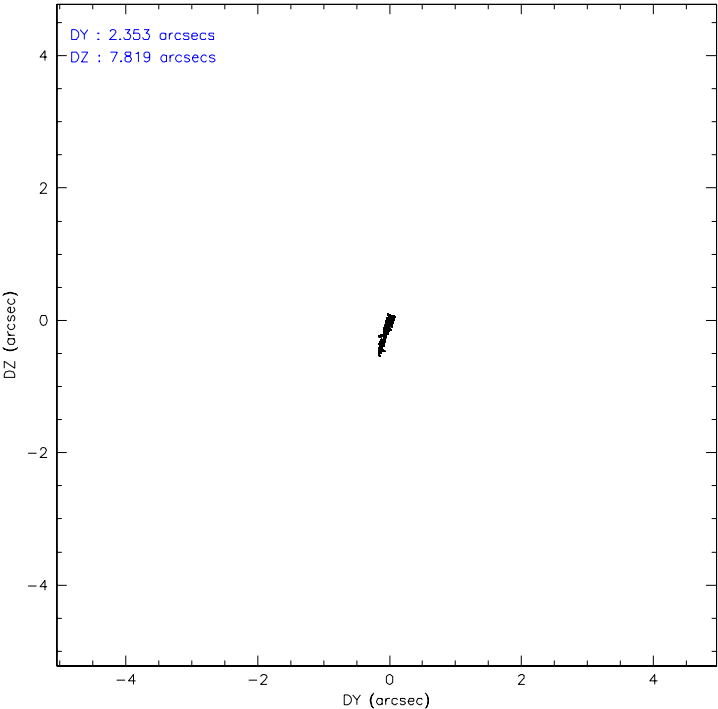
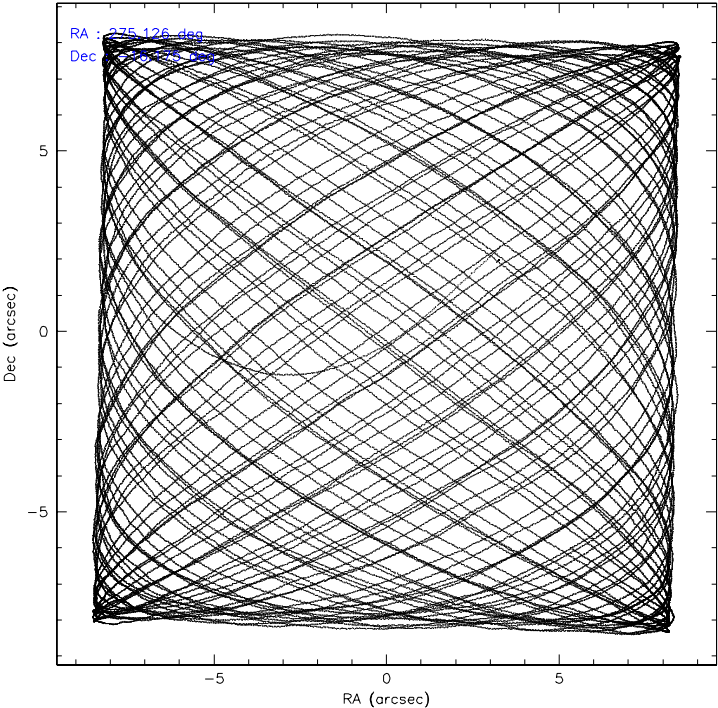
	ccd 0	ccd 1	ccd 2	ccd 3	ccd 6	ccd 7
level 1 events	249925	257286	274687	288315	278931	341052
rejected events	209906	211461	229835	228655	243009	206961
rejected %	83%	82%	83%	79%	87%	60%

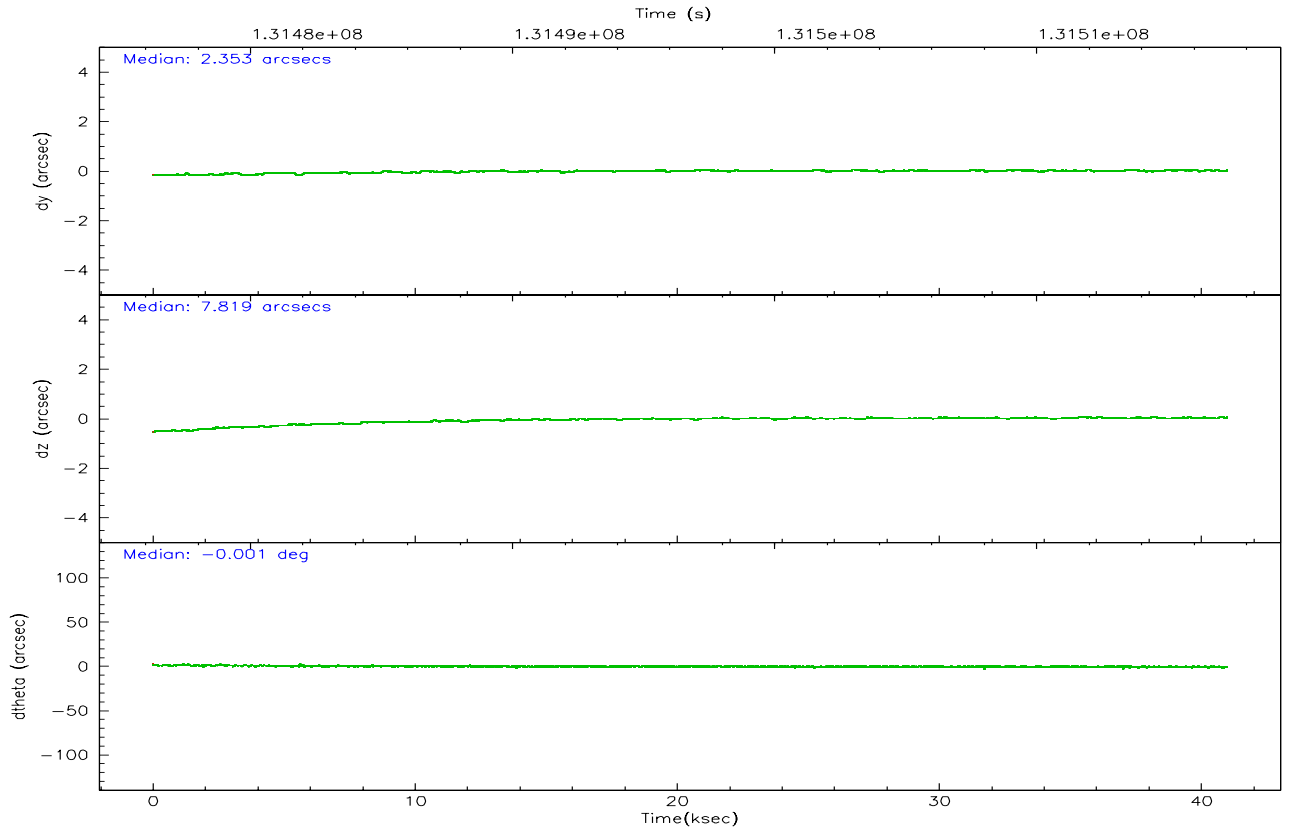
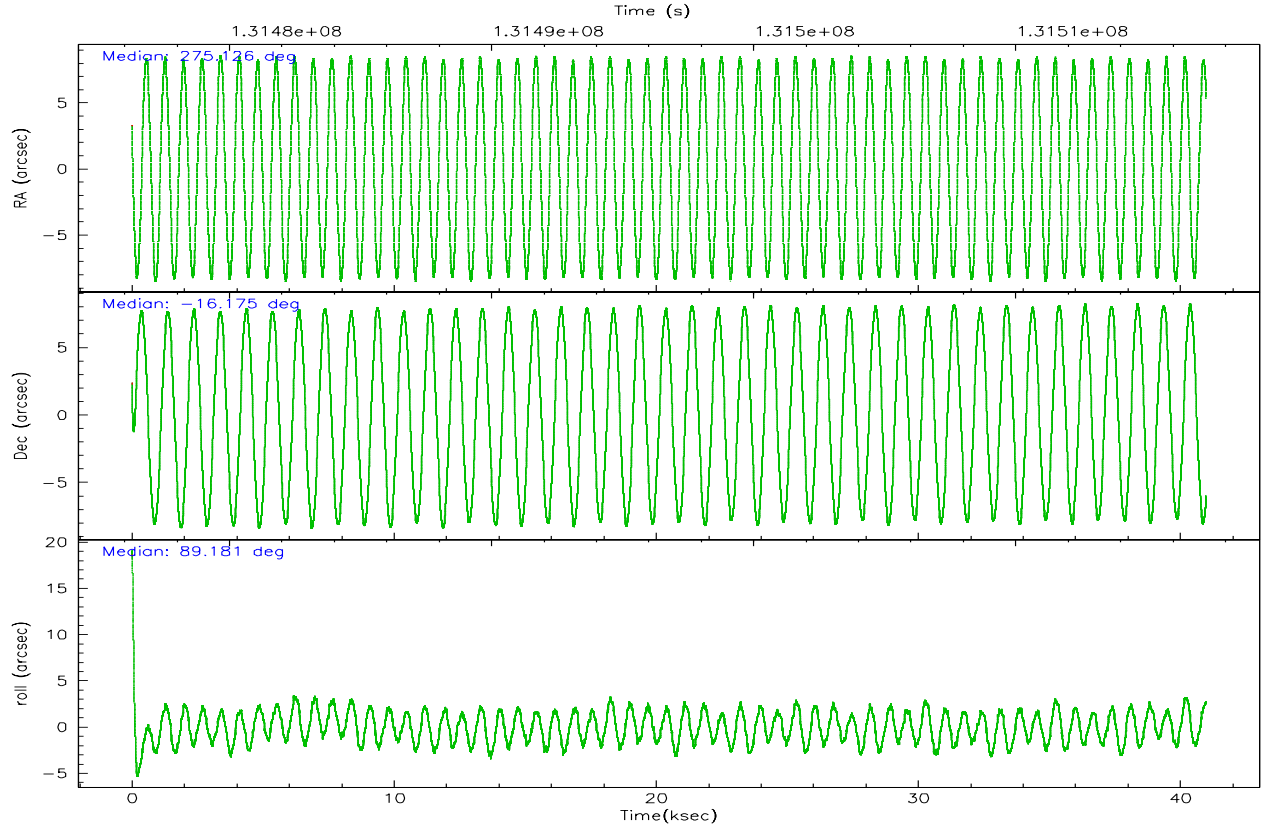
	ccd 0	ccd 1	ccd 2	ccd 3	ccd 6	ccd 7
grade 0 events	20630	24455	24453	35295	16219	8806
	8%	9%	8%	12%	5%	2%
grade 1 events	132	159	183	560	140	182
	0%	0%	0%	0%	0%	0%
grade 2 events	7472	7950	8152	9760	6934	33218
	2%	3%	2%	3%	2%	9%
grade 3 events	3360	3593	3323	4009	3245	7286
	1%	1%	1%	1%	1%	2%
grade 4 events	3048	3609	3267	4005	3128	7308
	1%	1%	1%	1%	1%	2%
grade 5 events	9811	10553	9272	10977	11556	23375
	3%	4%	3%	3%	4%	6%
grade 6 events	5509	6223	5662	6598	6402	77499
	2%	2%	2%	2%	2%	22%
grade 7 events	199963	200744	220375	217111	231307	183378
	80%	78%	80%	75%	82%	53%

2.2 Compared Parameters

Parameter	Planned	Actual	Parameter	Planned	Actual
Instrument	ACIS	ACIS	Obspar format version number	6	6
Detector	ACIS-012367	ACIS-012367	Obspar file type	PREDICTED	ACTUAL
Grating	NONE	NONE	Obspar update status	NONE	UPDATED
Data mode	FAINT	FAINT	On-chip summing requested	N	N
Observation mode	POINTING	POINTING	Subarray requested	NONE	NONE
Pointing RA	275.140530	275.1265536441769	Alternating exposures requested	N	N
Pointing Dec	-16.198911	-16.17502122399995	Primary exposure time	0.000000	3.2
Pointing Roll	88.982067	89.18685877771276			
SIM focus pos (mm)	-0.782348	-0.7809083437167272			
SIM defocus (mm)	0	0.001439871863259334			
SIM translation stage pos (mm)	-233.592463	-233.5874344608287			
SIM translation stage offset (mm)	0	-0.005018542100998502			
Observation start time	131477259.184000	131475903.97326			
Observation start date	2002-03-02T17:26:35	2002-03-02T17:05:03			
Observation end time	131517259.184000	131517892.58746			
Observation end date	2002-03-03T04:33:15	2002-03-03T04:44:52			
Read mode	TIMED	TIMED			

2.3 Aspect



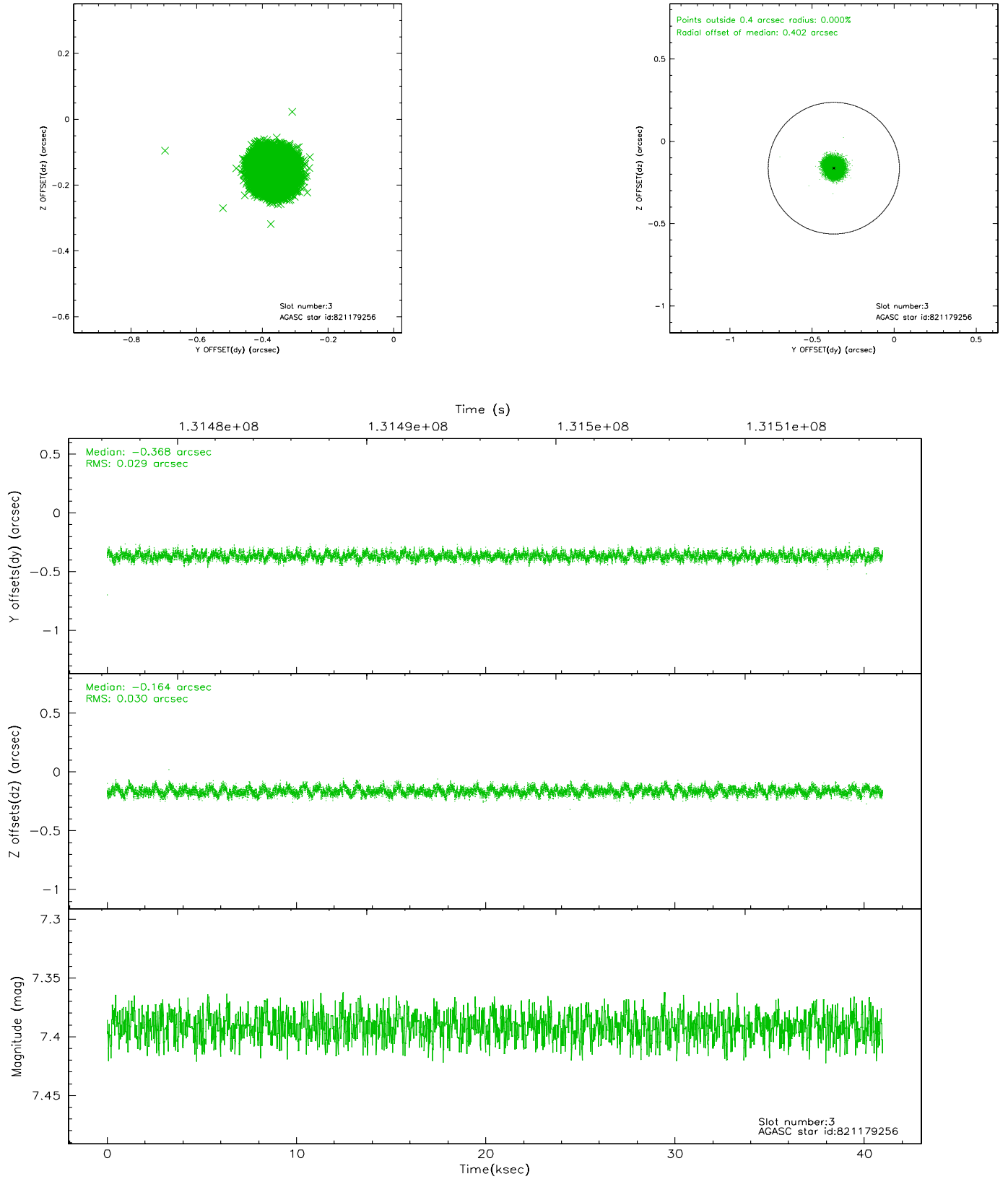


Slot Statistics

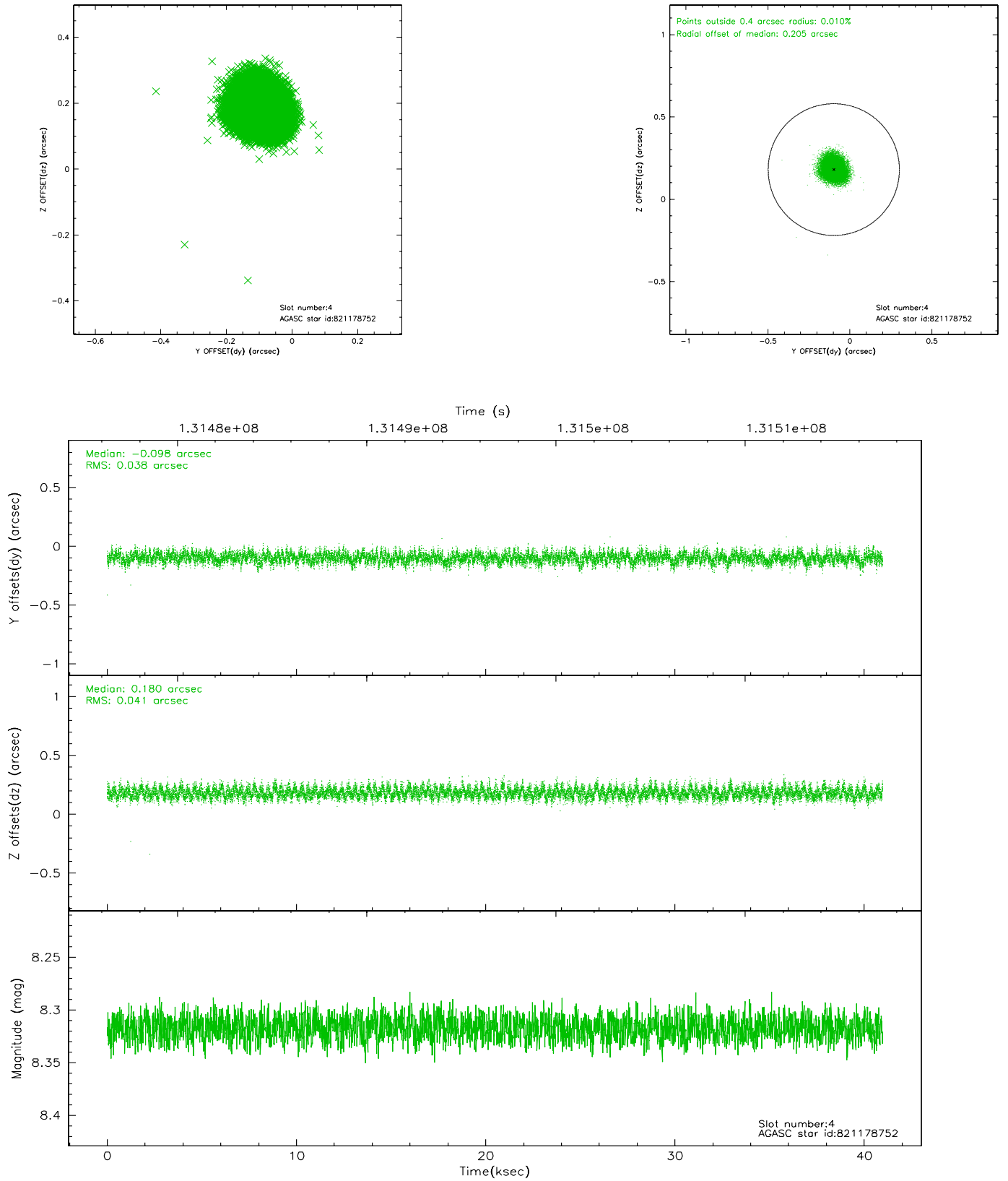
slot	status	id	mag	n_pts	med_dy	med_dz	dr1	dr2	ra	dec	mean_y	mean_z
0	FID	ACIS-I-1	7.24	9996	-0.045	0.084	0.008	0.016	0.000000	0.000000	937.41	-831.10
1	FID	ACIS-I-5	7.24	9993	0.005	0.033	0.006	0.011	0.000000	0.000000	-1810.60	1066.38
2	FID	ACIS-I-6	7.26	9994	-0.052	-0.046	0.007	0.012	0.000000	0.000000	402.98	1710.78
3	GUIDE	821179256	7.39	19990	-0.368	-0.164	0.045	0.071	274.840900	-15.612800	2090.07	1075.94
4	GUIDE	821178752	8.32	19989	-0.098	0.180	0.060	0.096	275.657809	-16.142816	231.72	-1785.05
5	GUIDE	821181816	8.40	19989	0.307	-0.062	0.057	0.093	274.847938	-16.750455	-2003.62	972.51
6	GUIDE	821186736	7.95	19990	0.251	-0.180	0.043	0.071	274.765126	-16.656680	-1671.84	1264.61
7	GUIDE	821171832	8.89	19981	-0.090	0.222	0.076	0.126	275.792275	-15.610164	2155.98	-2221.75

2.4 Star Slots

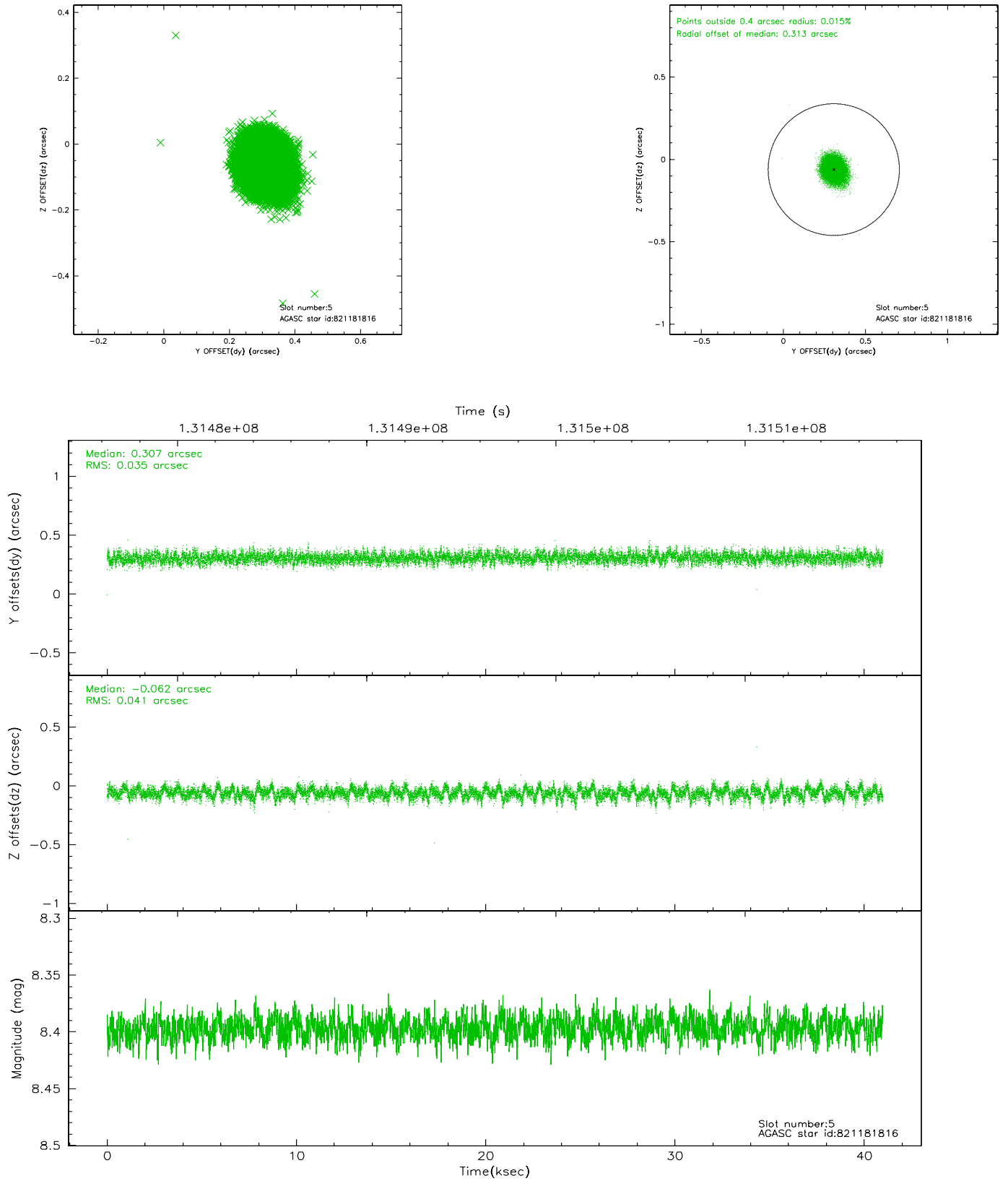
2.4.1 Slot 3



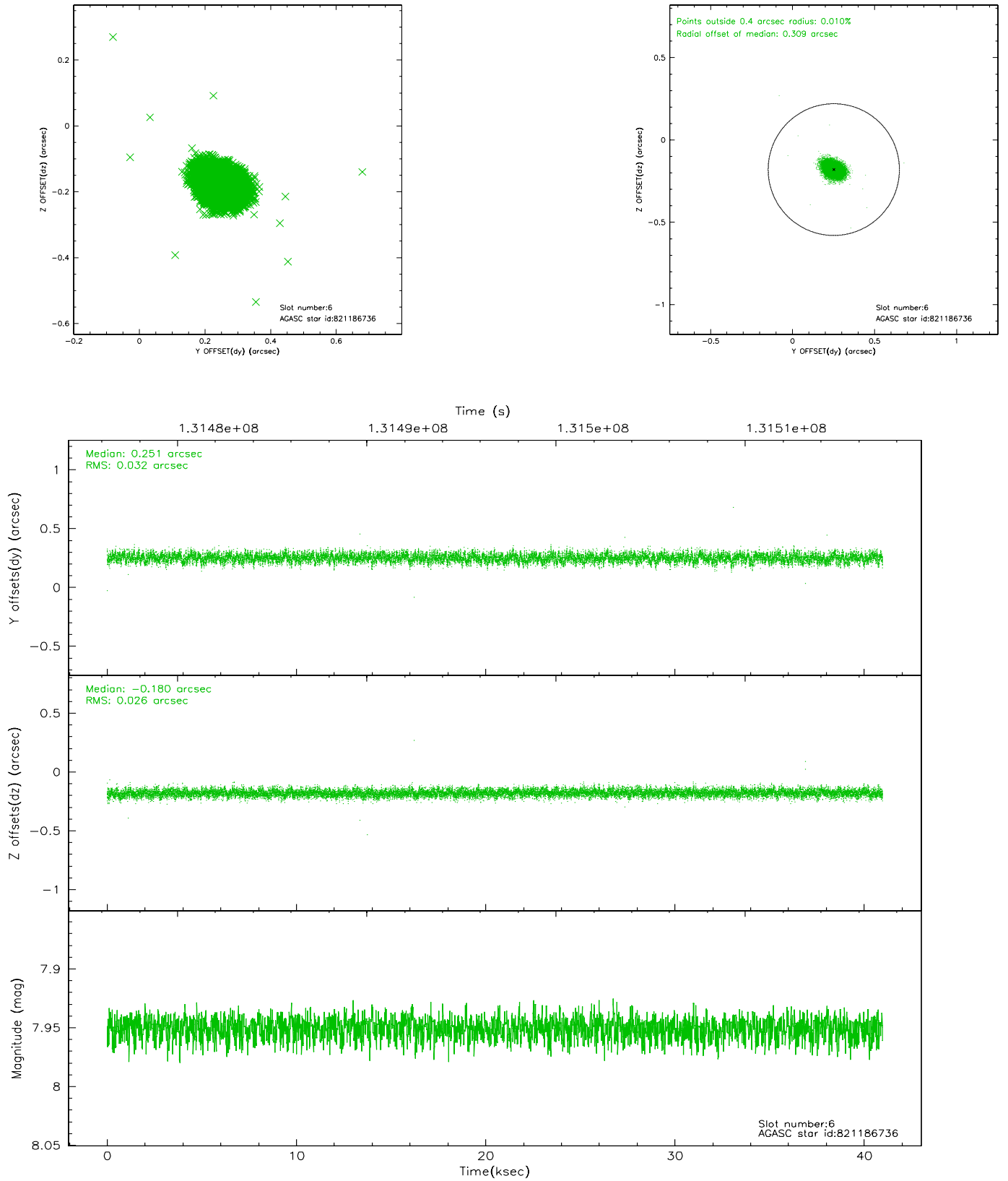
2.4.2 Slot 4



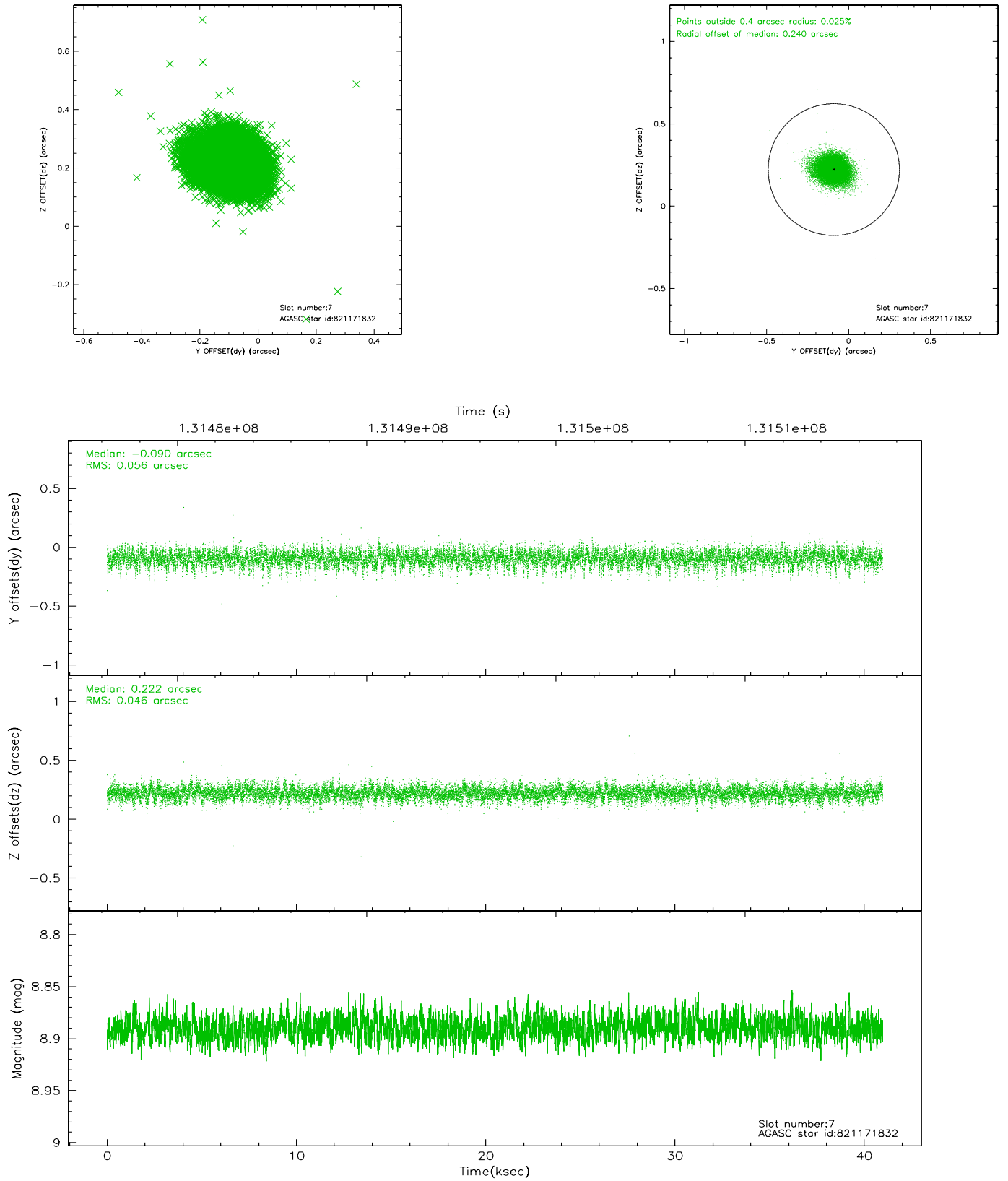
2.4.3 Slot 5



2.4.4 Slot 6

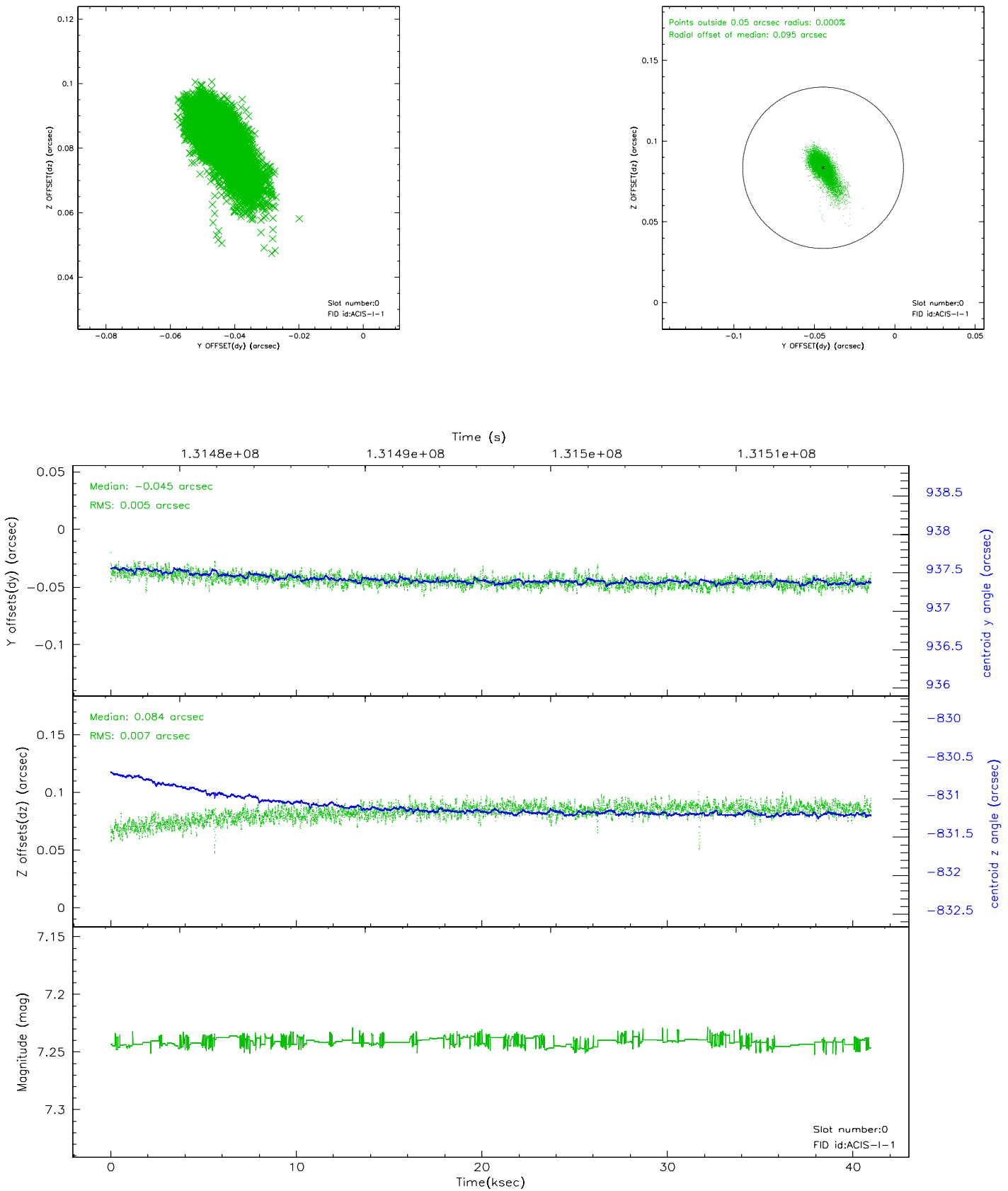


2.4.5 Slot 7

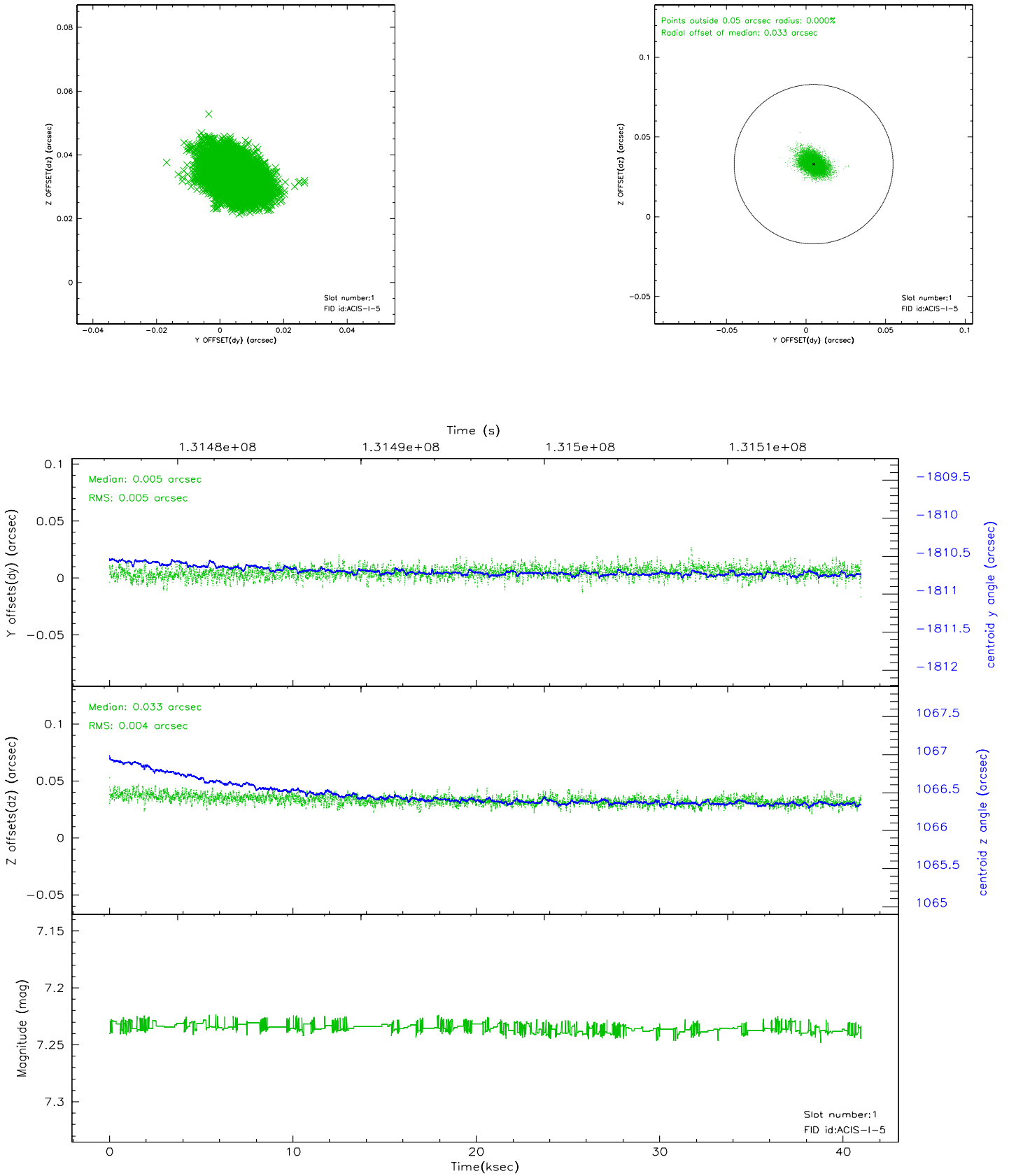


2.5 FID Slots

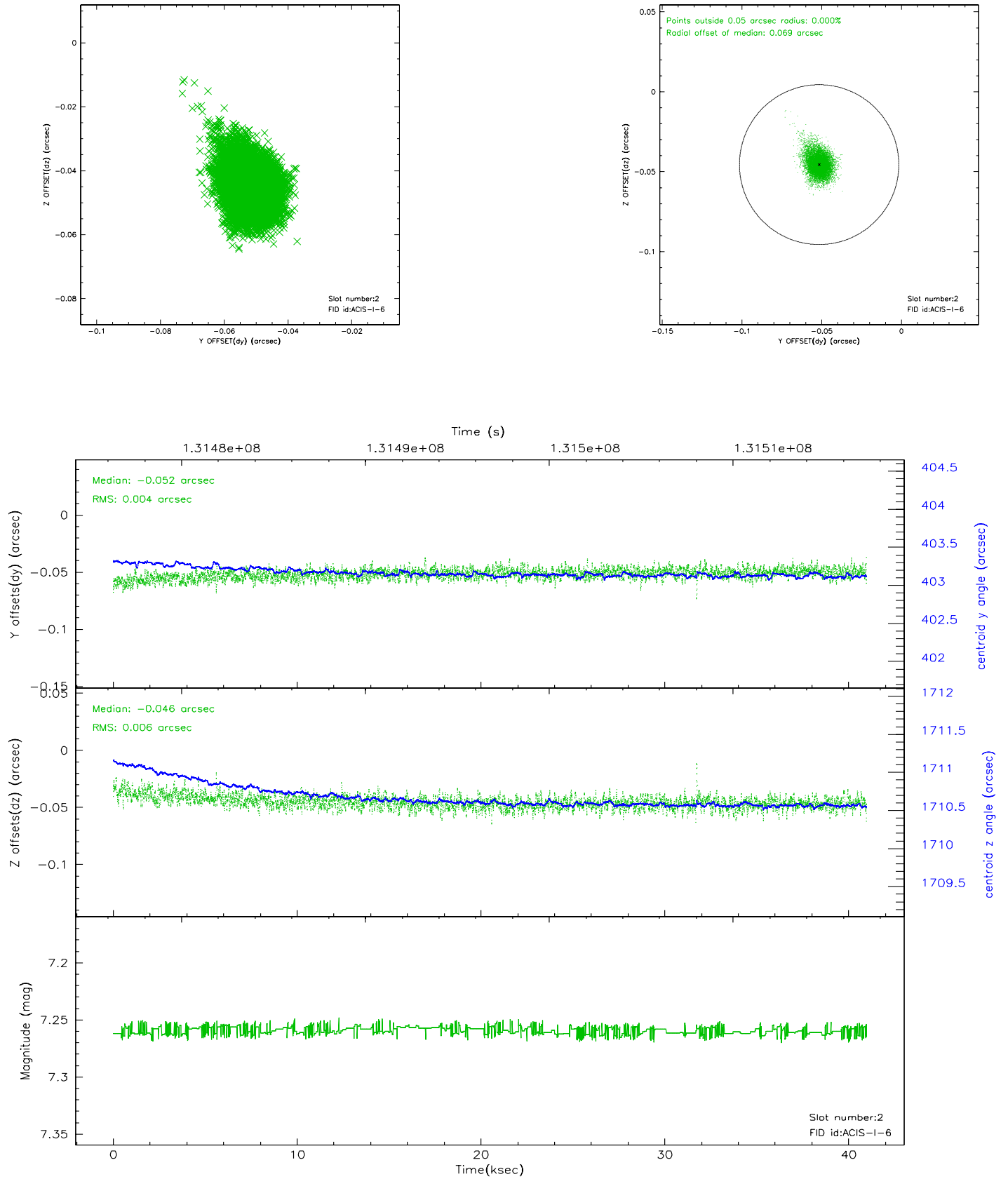
2.5.1 Slot 0



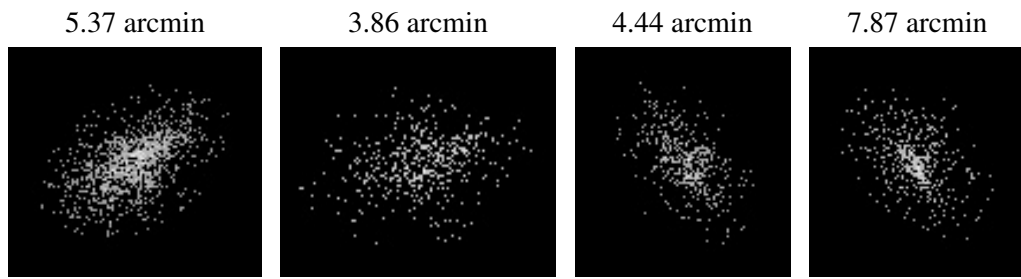
2.5.2 Slot 1



2.5.3 Slot 2



3 Point Sources



A Summary

A.1 Status

V&V Scientist	Jen Lauer
V&V Date (YYYY-MM-DD)	2006.09.06
V&V Edition	1
V&V Disposition and Status	OK
V&V Charge Time	39.945

A.2 Comments