

# V&V Reference Report

## L2 ASCDS Version : 7.6.9

Observation 1878 - L2 Version 001  
Chandra X-Ray Center

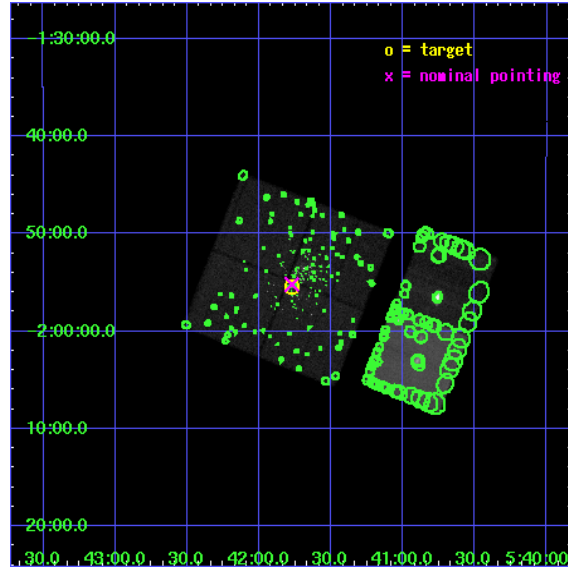
L2 Processing Date : Dec 19 2006

## Contents

<b>1</b>	<b>Front</b>	<b>2</b>
<b>2</b>	<b>OBI</b>	<b>3</b>
2.1	OBI . . . . .	3
2.1.1	Images . . . . .	3
2.1.2	Bias . . . . .	3
2.1.3	Parameters . . . . .	4
2.1.4	Events . . . . .	4
2.2	Compared Parameters . . . . .	5
2.3	Aspect . . . . .	6
2.4	Star Slots . . . . .	9
2.4.1	Slot 3 . . . . .	9
2.4.2	Slot 4 . . . . .	10
2.4.3	Slot 5 . . . . .	11
2.4.4	Slot 6 . . . . .	12
2.4.5	Slot 7 . . . . .	13
2.5	FID Slots . . . . .	14
2.5.1	Slot 0 . . . . .	14
2.5.2	Slot 1 . . . . .	15
2.5.3	Slot 2 . . . . .	16
<b>3</b>	<b>Point Sources</b>	<b>17</b>
<b>A</b>	<b>Summary</b>	<b>18</b>
A.1	Status . . . . .	18
A.2	Comments . . . . .	18

# 1 Front

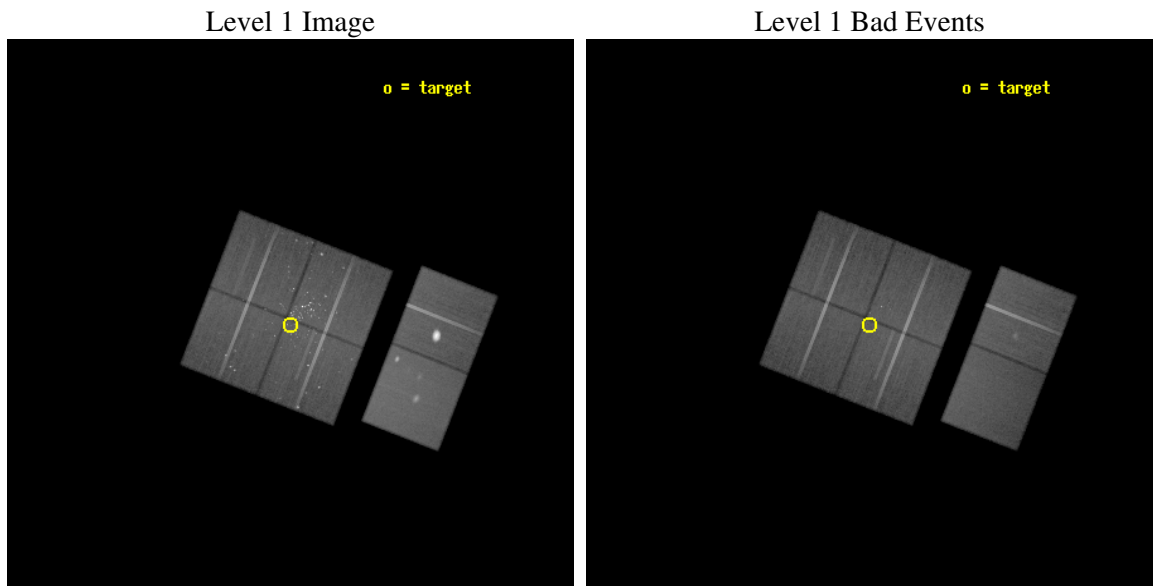
seq_num	200106
obs_id	1878
title	THE X-RAY VIEW OF ACTIVE STAR-FORMATION IN THE DENSE STELLAR CLUSTER NGC 2024
observer	Dr. Stephen Skinner
object	NGC_2024
dtcycle	0
cycle	P
ra_targ	85.442917
dec_targ	-1.924639
ra_nom	85.443055696531
dec_nom	-1.919921400865
roll_nom	111.40367807613
revision	2
ontime	76425.600071177
livetime	75457.853105104
ontime0	76422.359081015
ontime1	76422.359090999
ontime2	76425.600071177
ontime3	76425.600071177
ontime6	76422.359110922
ontime7	76425.600071177
l2events	679350



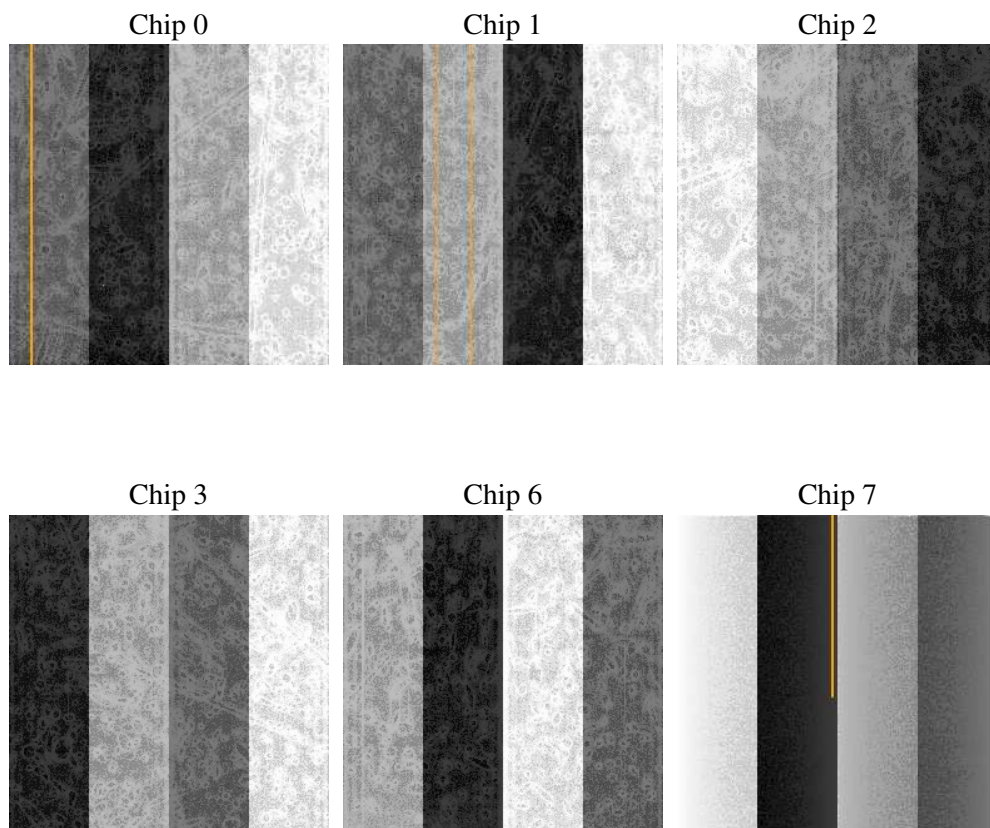
## 2 OBI

### 2.1 OBI

#### 2.1.1 Images



#### 2.1.2 Bias



### 2.1.3 Parameters

obi_num	0
ascdsver	7.6.9
caldsver	3.2.4
date	2006-12-19T12:25:57
revision	2

sched_exp_time	76338.000000
ontime	77638.086778149
ontime0	77634.845787987
ontime1	77634.845797971
ontime2	77638.086778149
ontime3	77638.086778149
ontime6	77634.845837802
ontime7	77638.086798057
l1events	3349948

### 2.1.4 Events

	ccd 0	ccd 1	ccd 2	ccd 3	ccd 6	ccd 7
level 1 events	473076	477900	559777	523803	644811	670581
rejected events	409011	410690	454507	452209	478111	404889
rejected %	86%	85%	81%	86%	74%	60%

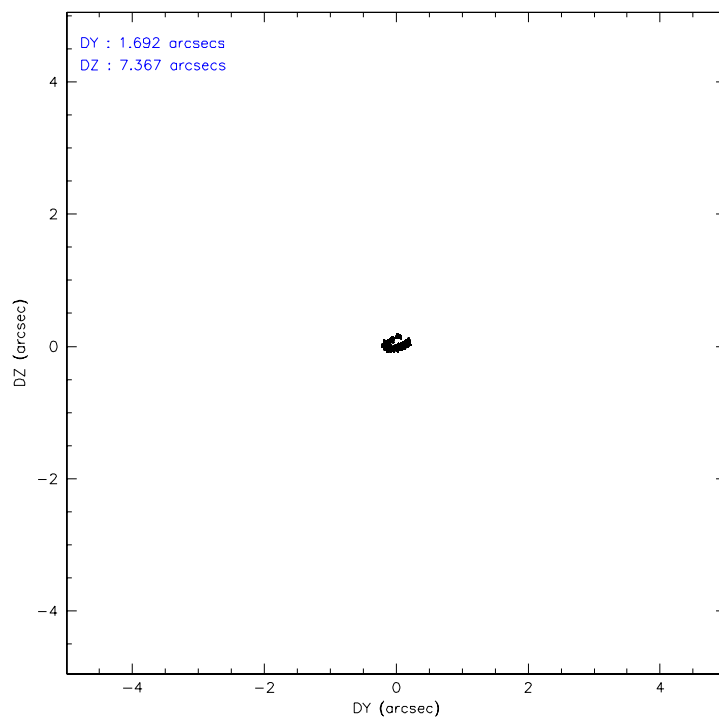
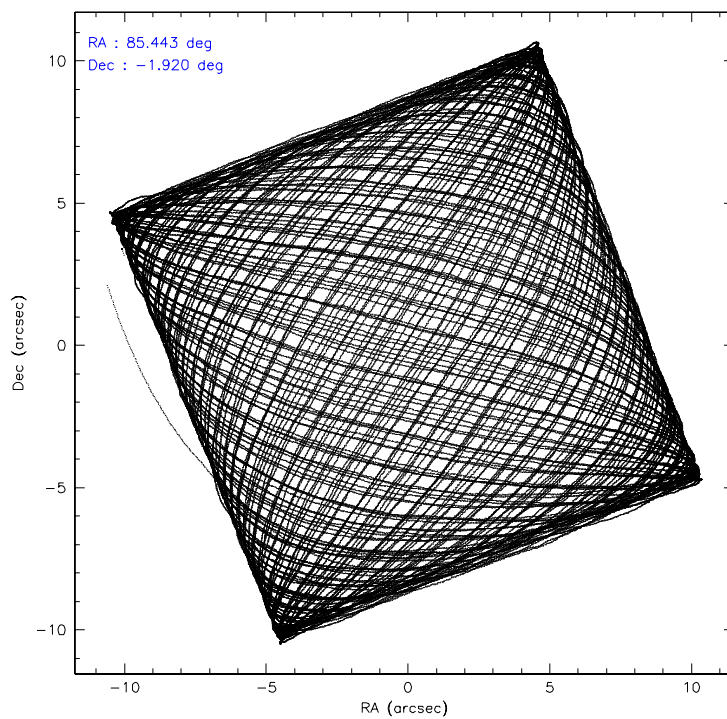
	ccd 0	ccd 1	ccd 2	ccd 3	ccd 6	ccd 7
grade 0 events	29454	30093	60920	36593	122826	20789
	6%	6%	10%	6%	19%	3%
grade 1 events	275	245	790	344	755	375
	0%	0%	0%	0%	0%	0%
grade 2 events	13238	13255	18592	12983	18424	65894
	2%	2%	3%	2%	2%	9%
grade 3 events	6094	6596	7224	5949	7351	15589
	1%	1%	1%	1%	1%	2%
grade 4 events	5642	6572	7300	6133	7209	15282
	1%	1%	1%	1%	1%	2%
grade 5 events	17782	19739	17986	19710	22442	44765
	3%	4%	3%	3%	3%	6%
grade 6 events	10605	11615	12273	10855	12224	152147
	2%	2%	2%	2%	1%	22%
grade 7 events	389986	389785	434692	431236	453580	355740
	82%	81%	77%	82%	70%	53%

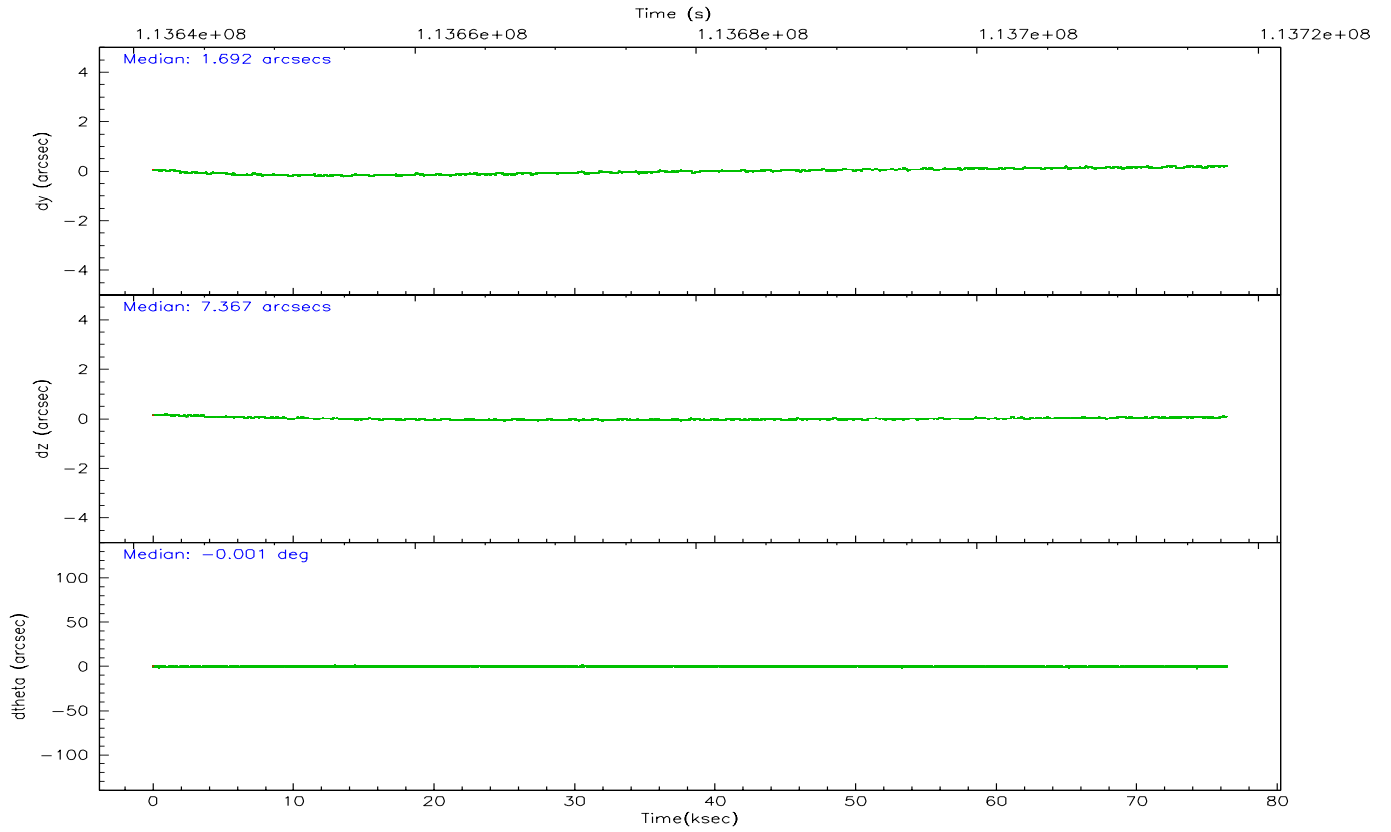
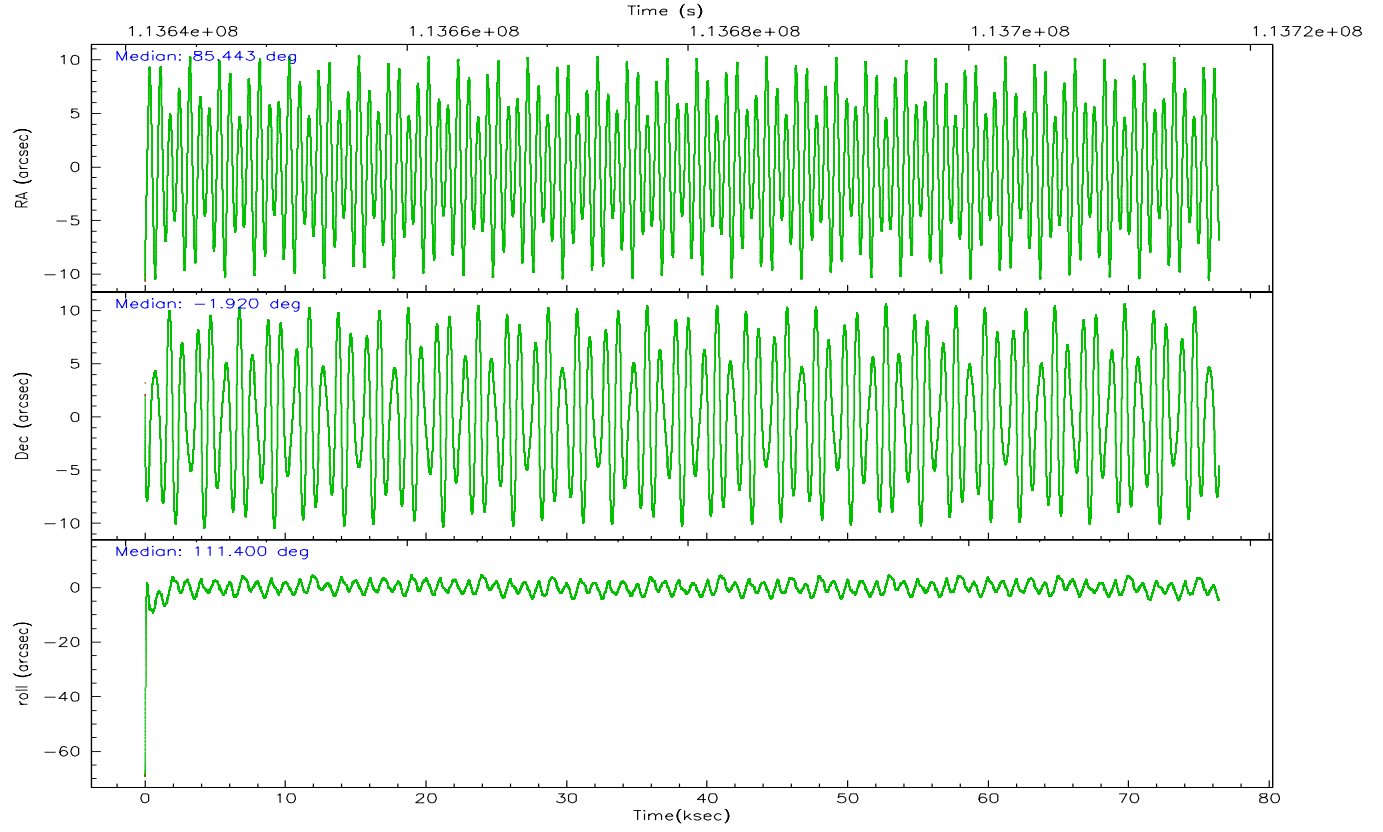


## 2.2 Compared Parameters

Parameter	Planned	Actual	Parameter	Planned	Actual
Instrument	ACIS	ACIS	Obspar format version number	6	6
Detector	ACIS-012367	ACIS-012367	Obspar file type	PREDICTED	ACTUAL
Grating	NONE	NONE	Obspar update status	NONE	UPDATED
Data mode	FAINT	FAINT	Number of optional ACIS chips dropped	0	0
Observation mode	POINTING	POINTING	On-chip summing requested	N	N
Pointing RA	85.464532	85.44305569653122	Subarray requested	NONE	NONE
Pointing Dec	-1.937003	-1.919921400864962	Alternating exposures requested	N	N
Pointing Roll	111.195724	111.4036780761292	Primary exposure time	0.000000	3.2
SIM focus pos (mm)	-0.782348	-0.7809083437167272			
SIM defocus (mm)	0	0.001439871863259334			
SIM translation stage pos (mm)	-233.592463	-233.5874344608287			
SIM translation stage offset (mm)	0	-0.005018542100998502			
Observation start time	113641464.184000	113639830.59881			
Observation start date	2001-08-08T07:03:20	2001-08-08T06:37:10			
Observation end time	113717802.184000	113718506.52691			
Observation end date	2001-08-09T04:15:38	2001-08-09T04:28:26			
Read mode	TIMED	TIMED			

## 2.3 Aspect



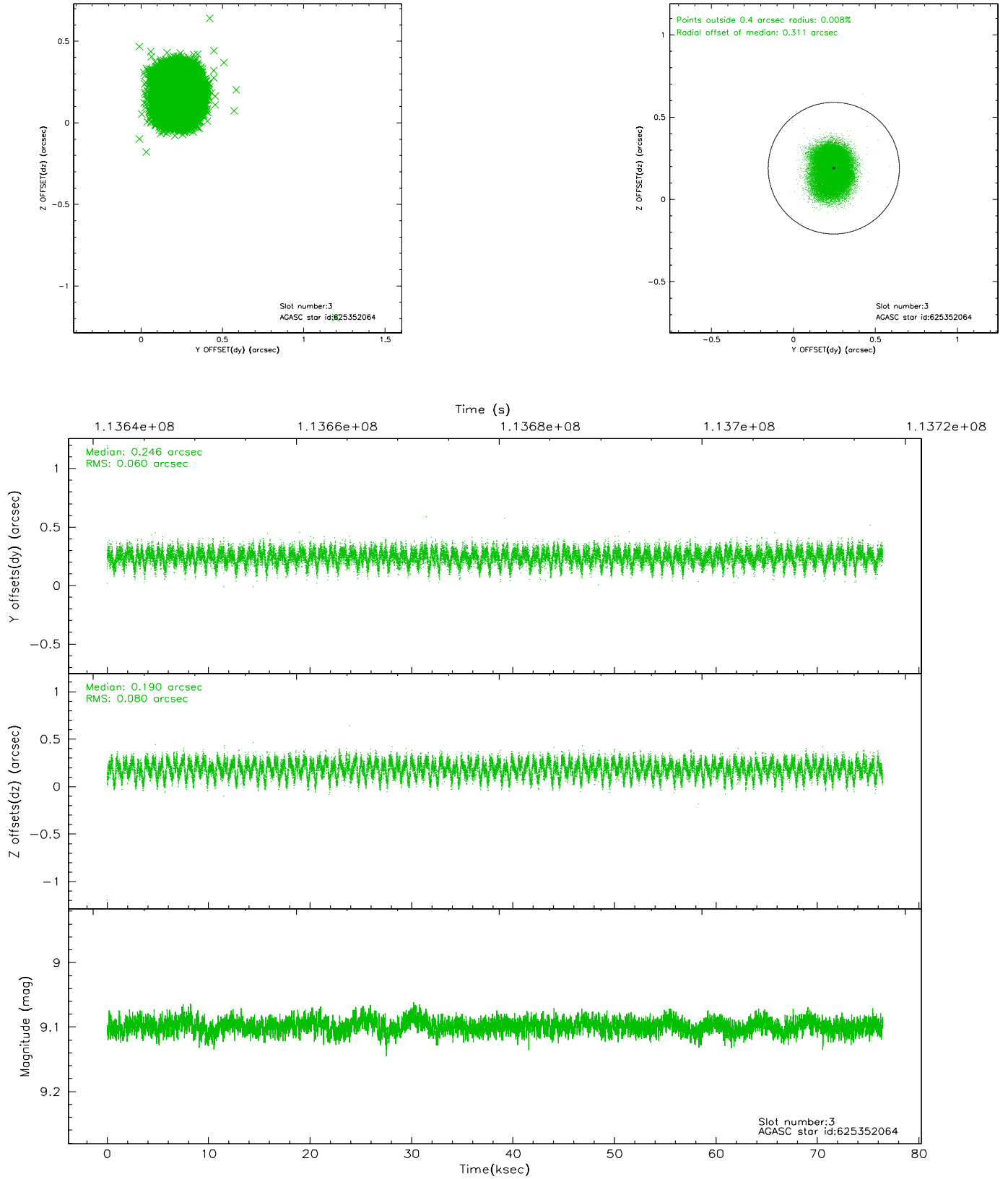


### Slot Statistics

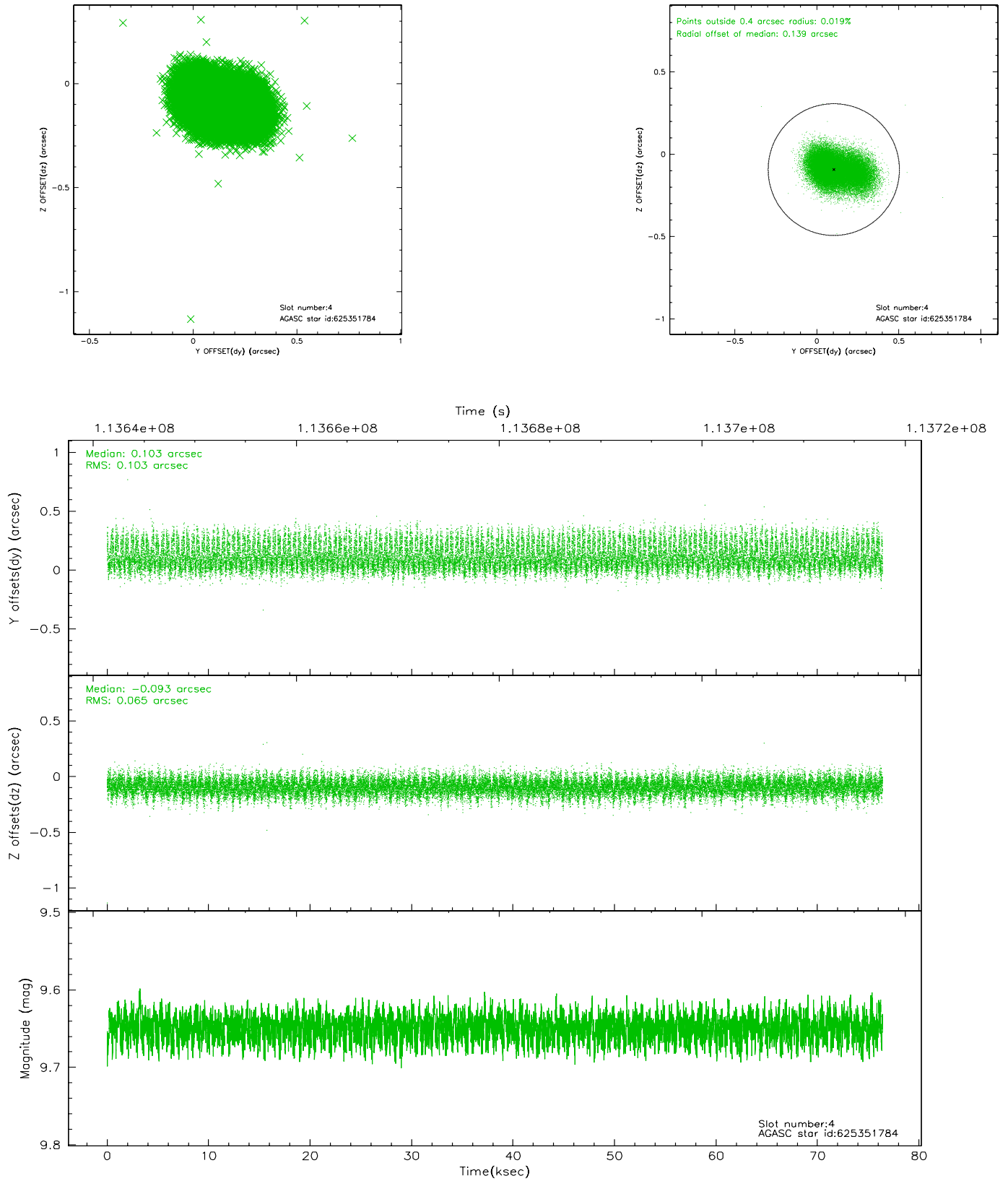
slot	status	id	mag	n_pts	med_dy	med_dz	dr1	dr2	ra	dec	mean_y	mean_z
0	FID	ACIS-I-1	7.25	18641	-0.030	0.069	0.006	0.010	0.000000	0.000000	938.09	-830.73
1	FID	ACIS-I-5	7.24	18635	-0.003	0.044	0.006	0.010	0.000000	0.000000	-1809.99	1066.82
2	FID	ACIS-I-6	7.26	18639	-0.058	-0.042	0.007	0.011	0.000000	0.000000	403.73	1711.12
3	GUIDE	625352064	9.10	37276	0.246	0.190	0.107	0.172	86.070549	-2.343407	-2152.17	-1502.77
4	GUIDE	625351784	9.65	37256	0.103	-0.093	0.129	0.216	85.054542	-2.514772	-1406.28	2127.21
5	GUIDE	624827256	6.96	37282	-0.314	-0.038	0.045	0.073	85.016618	-1.425471	2299.35	837.91
6	GUIDE	624829760	8.89	37268	-0.013	-0.017	0.075	0.123	85.013848	-1.712852	1338.64	1220.95
7	GUIDE	624827512	8.95	37270	-0.038	-0.035	0.102	0.165	85.028068	-1.665011	1480.52	1111.01

## 2.4 Star Slots

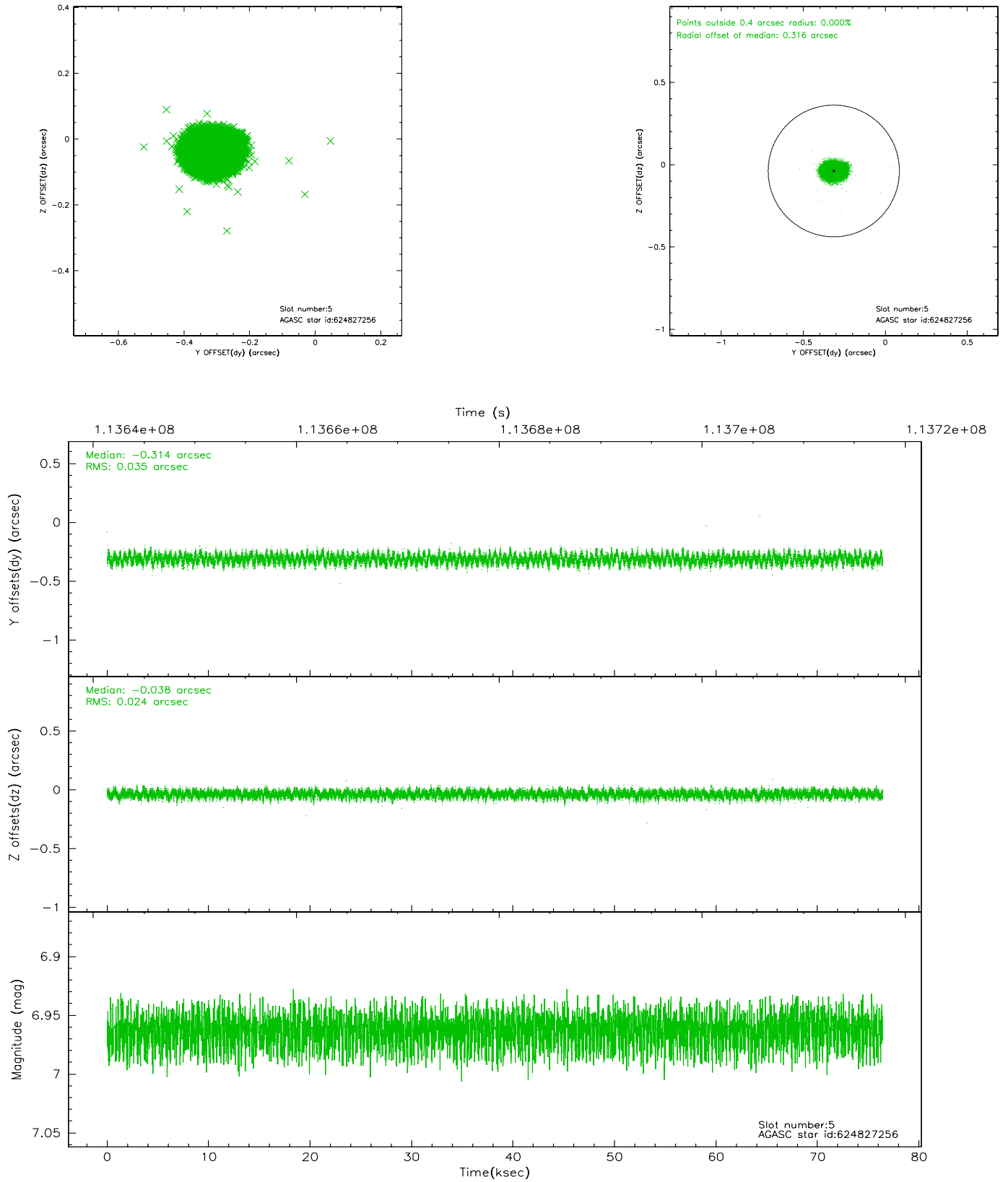
### 2.4.1 Slot 3



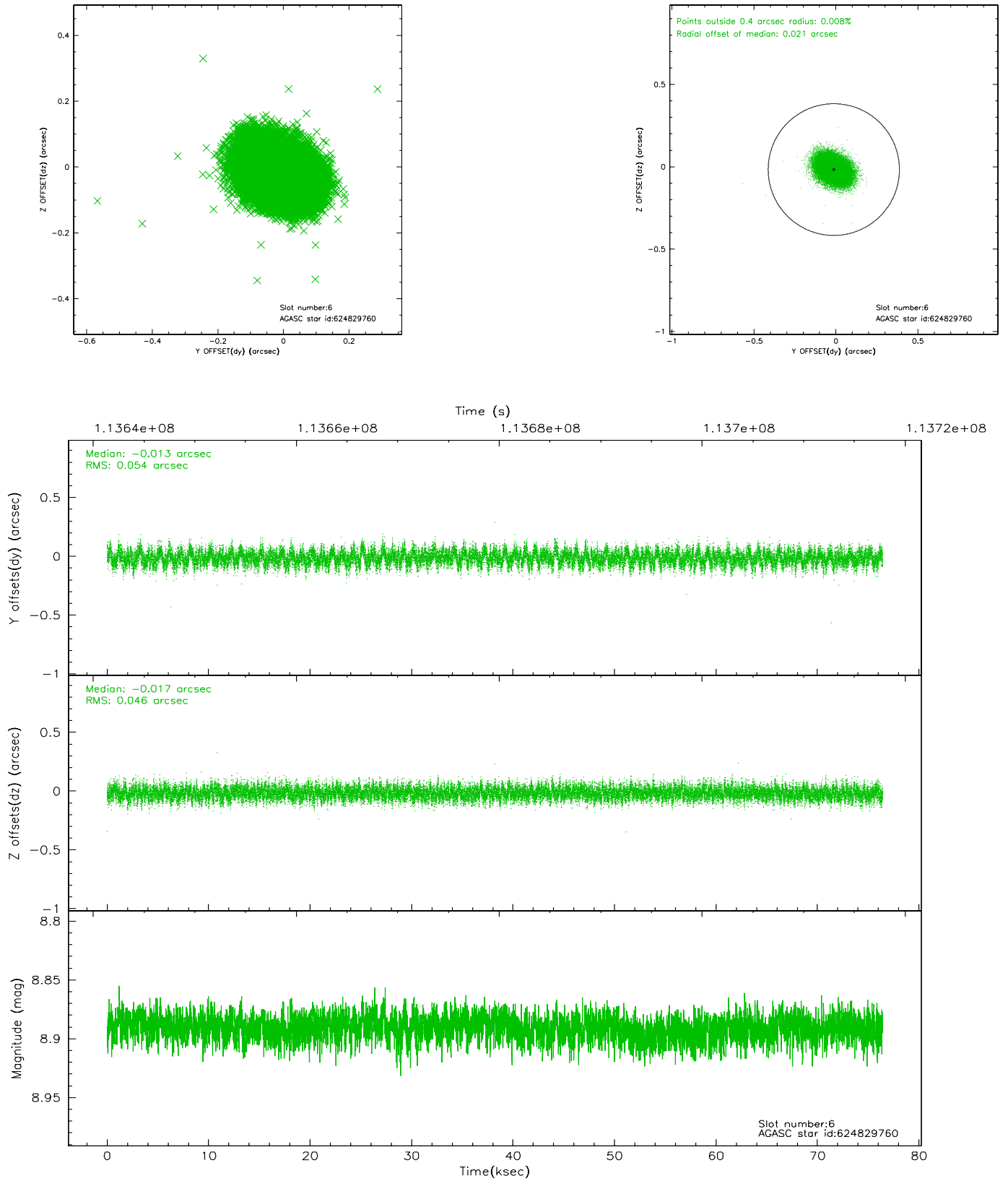
## 2.4.2 Slot 4



### 2.4.3 Slot 5

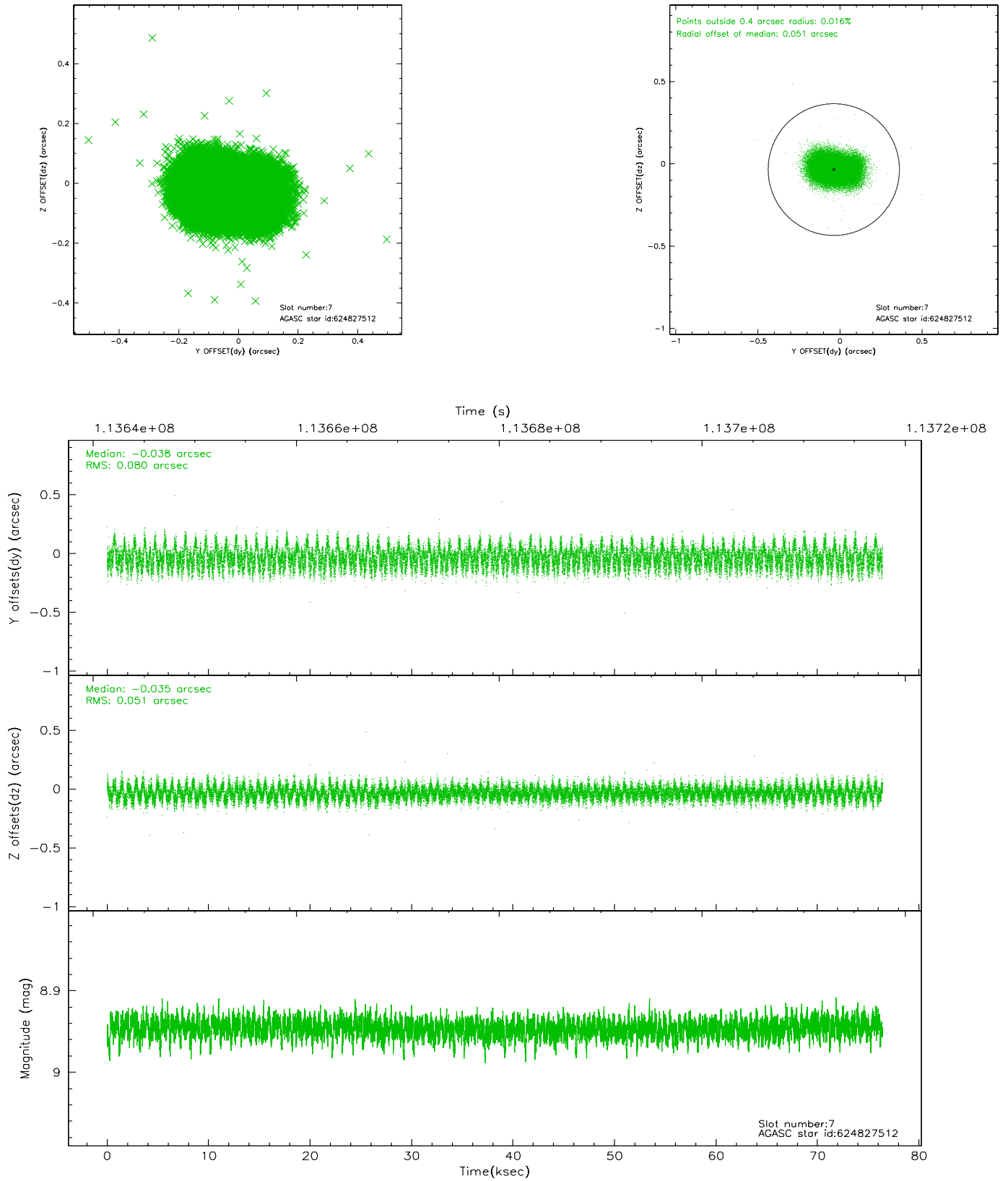


## 2.4.4 Slot 6



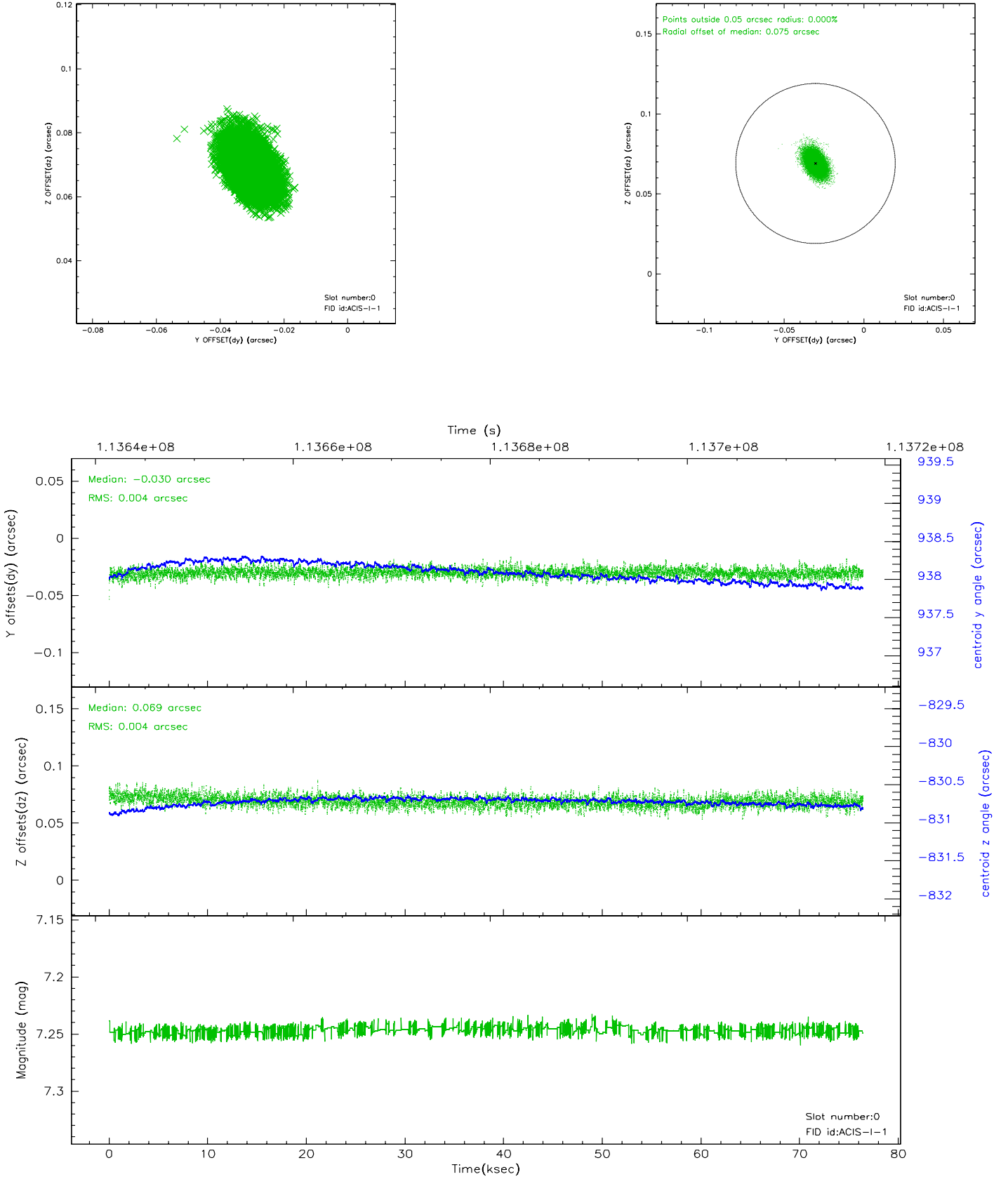


## 2.4.5 Slot 7

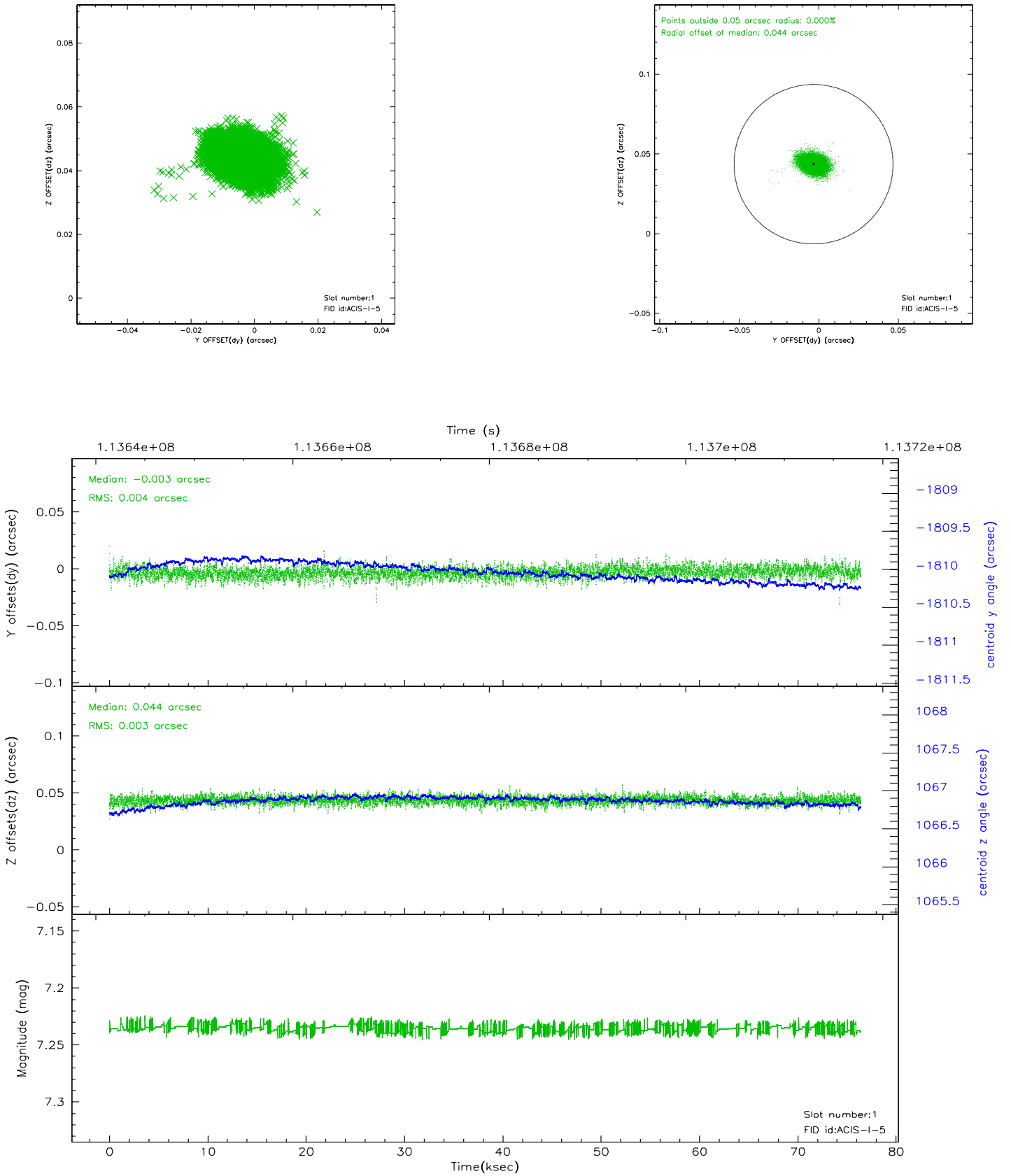


## 2.5 FID Slots

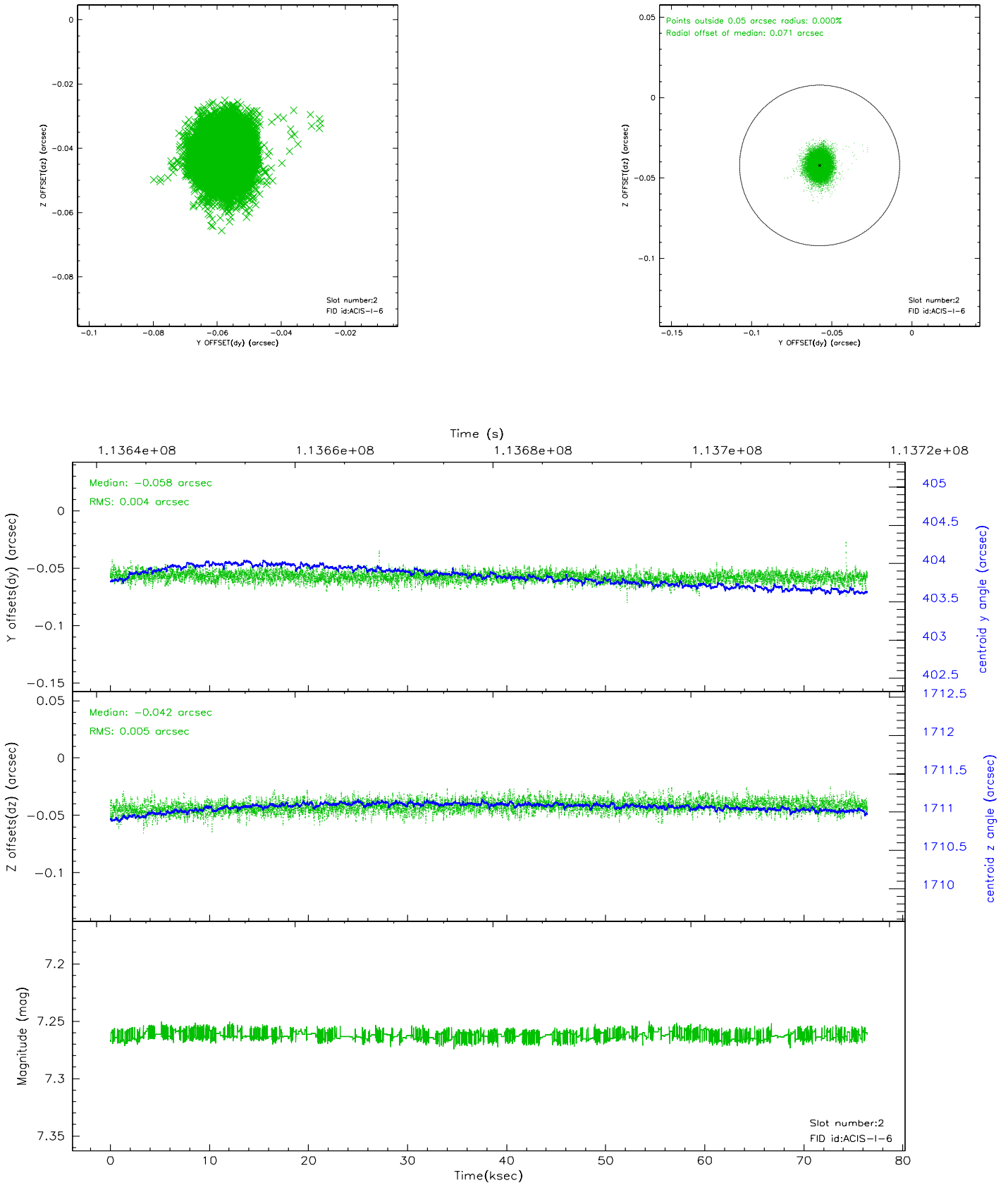
### 2.5.1 Slot 0



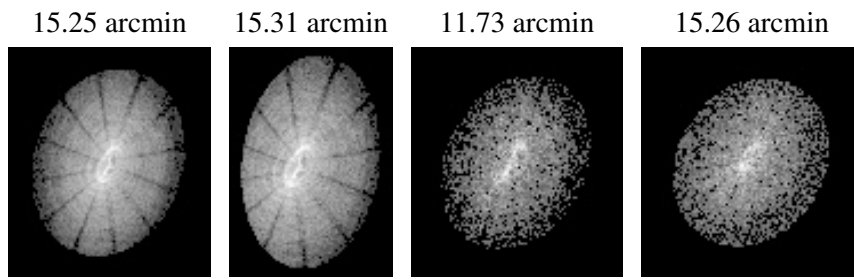
## 2.5.2 Slot 1



### 2.5.3 Slot 2



### 3 Point Sources



## A Summary

### A.1 Status

V&V Scientist	Beth Sundheim
V&V Date (YYYY-MM-DD)	2006.12.19
V&V Edition	1
V&V Disposition and Status	OK
V&V Charge Time	76.426

### A.2 Comments