

# V&V Reference Report

## L2 ASCDS Version : 7.6.9

Observation 1877 - L2 Version 001  
Chandra X-Ray Center

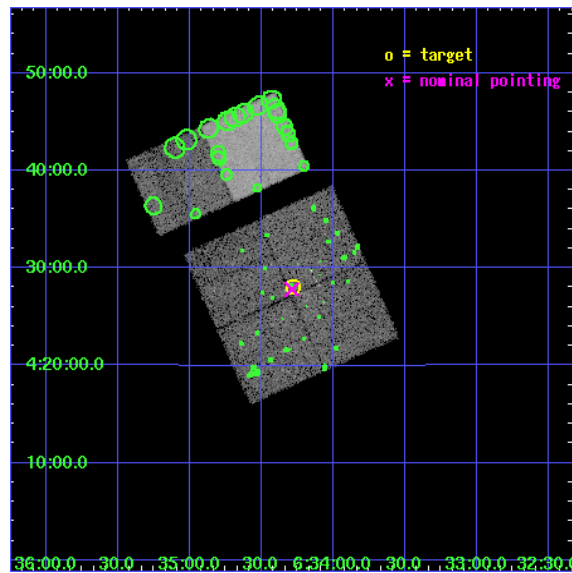
L2 Processing Date : Nov 2 2006

## Contents

<b>1</b>	<b>Front</b>	<b>2</b>
<b>2</b>	<b>OBI</b>	<b>3</b>
2.1	OBI . . . . .	3
2.1.1	Images . . . . .	3
2.1.2	Bias . . . . .	3
2.1.3	Parameters . . . . .	4
2.1.4	Events . . . . .	4
2.2	Compared Parameters . . . . .	5
2.3	Aspect . . . . .	6
2.4	Star Slots . . . . .	9
2.4.1	Slot 3 . . . . .	9
2.4.2	Slot 4 . . . . .	10
2.4.3	Slot 5 . . . . .	11
2.4.4	Slot 6 . . . . .	12
2.4.5	Slot 7 . . . . .	13
2.5	FID Slots . . . . .	14
2.5.1	Slot 0 . . . . .	14
2.5.2	Slot 1 . . . . .	15
2.5.3	Slot 2 . . . . .	16
<b>3</b>	<b>Point Sources</b>	<b>17</b>
<b>A</b>	<b>Summary</b>	<b>18</b>
A.1	Status . . . . .	18
A.2	Comments . . . . .	18

# 1 Front

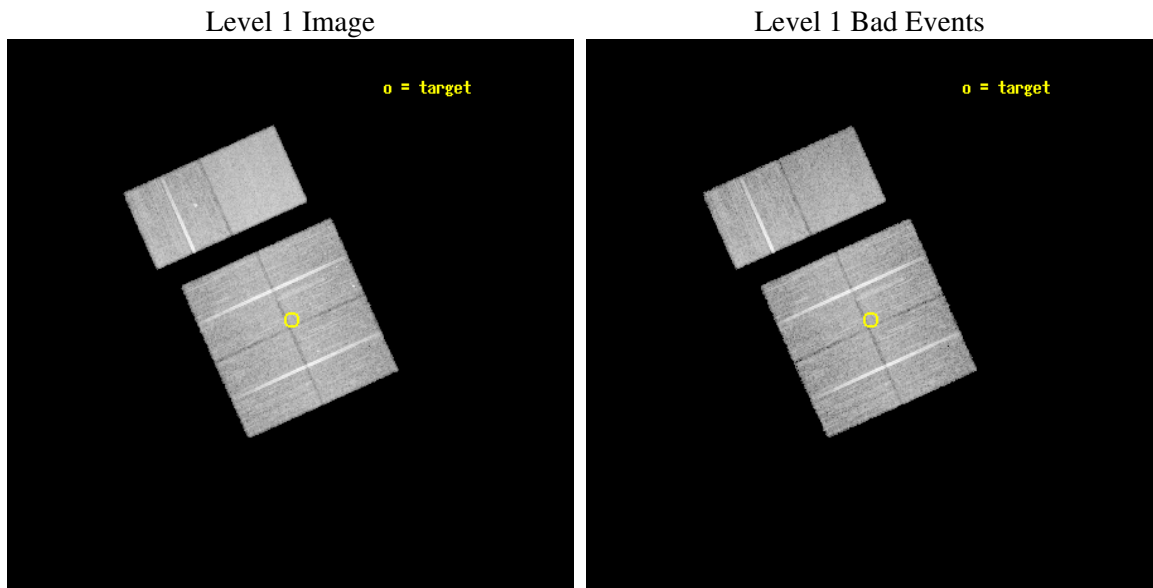
seq_num	200105
obs_id	1877
title	STAR FORMATION IN THE ROSETTE MOLECULAR CLOUD
observer	Dr. Leisa Townsley
object	ROSETTE FIELD 4
dtcycle	0
cycle	P
ra_targ	98.56875
dec_targ	4.466944
ra_nom	98.572002415456
dec_nom	4.4634077419862
roll_nom	335.85322454236
revision	2
ontime	19756.8000184
livetime	19506.62752045
ontime0	19756.8000184
ontime1	19756.8000184
ontime2	19756.8000184
ontime3	19756.8000184
ontime6	19753.559038162
ontime7	19756.8000184
l2events	115099



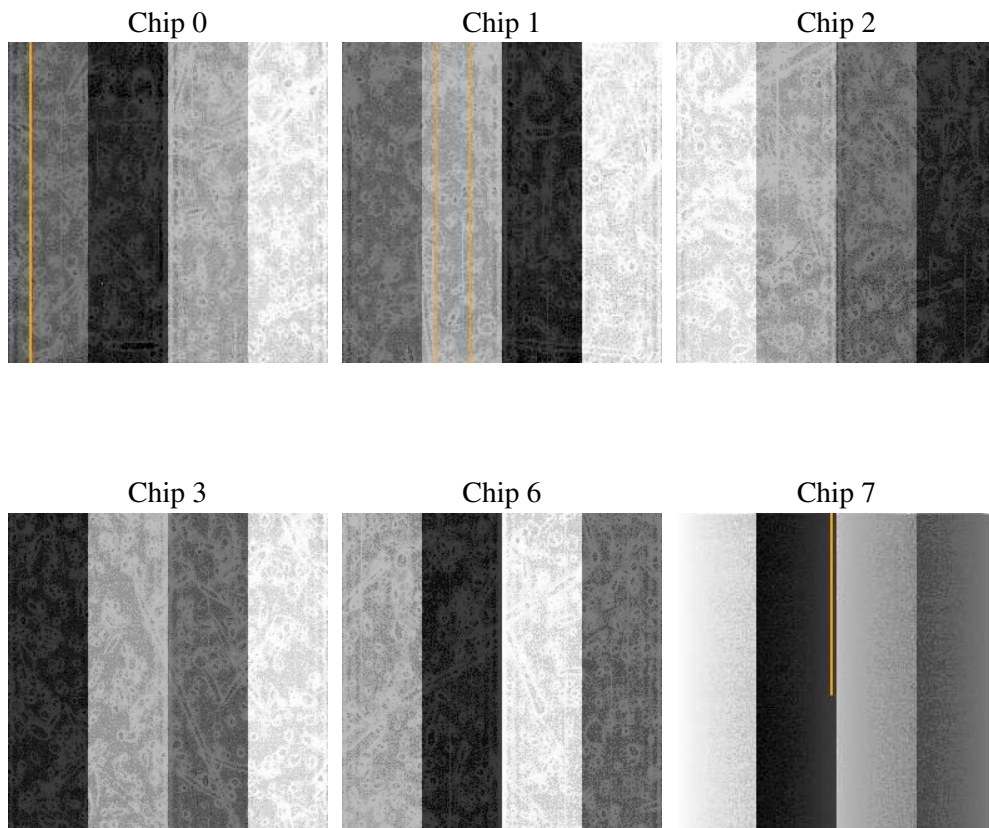
## 2 OBI

### 2.1 OBI

#### 2.1.1 Images



#### 2.1.2 Bias



### 2.1.3 Parameters

obi_num	0
ascdsver	7.6.9
caldbver	3.2.3
date	2006-11-02T13:06:47
revision	2

sched_exp_time	20000.000000
ontime	19763.644907653
ontime0	19763.644887716
ontime1	19763.644887716
ontime2	19763.644887716
ontime3	19763.644907653
ontime6	19760.403907478
ontime7	19763.644907653
l1events	730170

### 2.1.4 Events

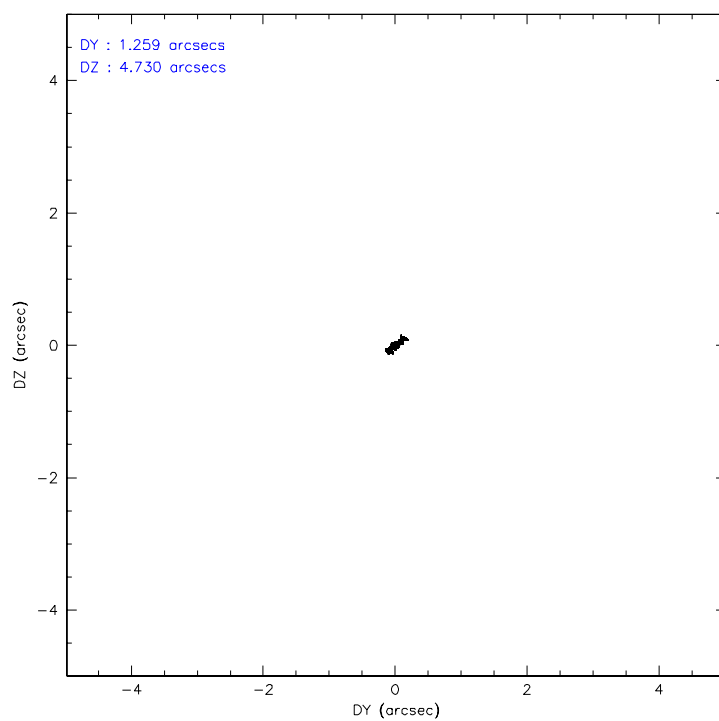
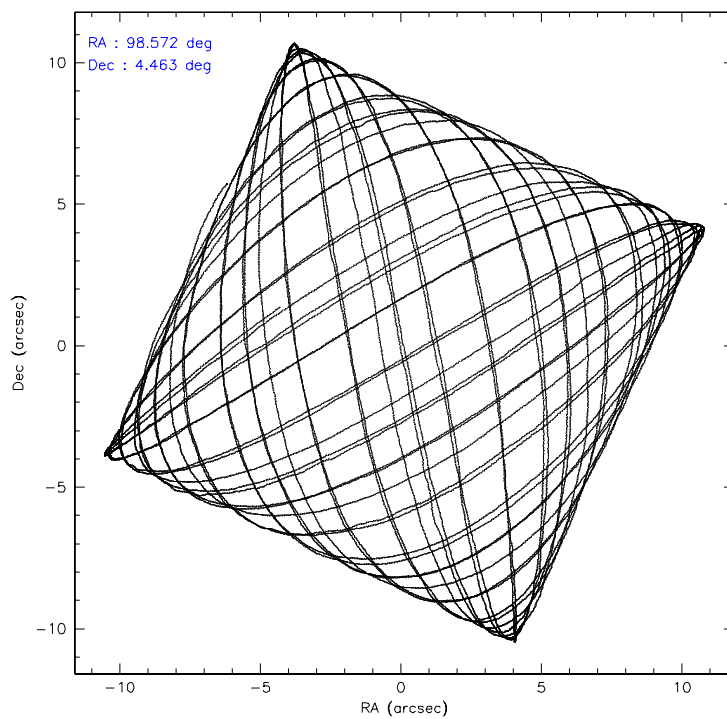
	ccd 0	ccd 1	ccd 2	ccd 3	ccd 6	ccd 7
level 1 events	109223	111868	116499	119841	124167	148572
rejected events	94458	97025	103443	105603	110079	92321
rejected %	86%	86%	88%	88%	88%	62%

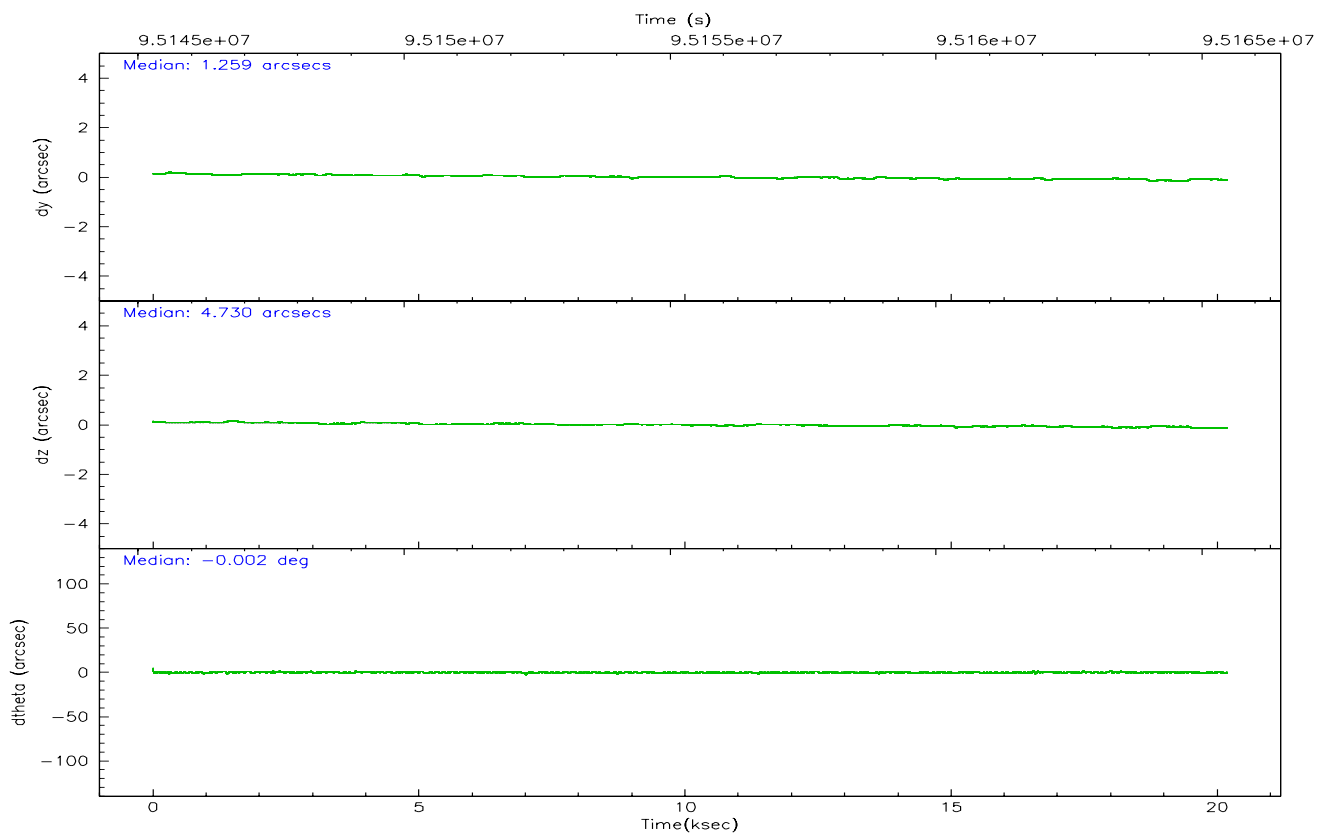
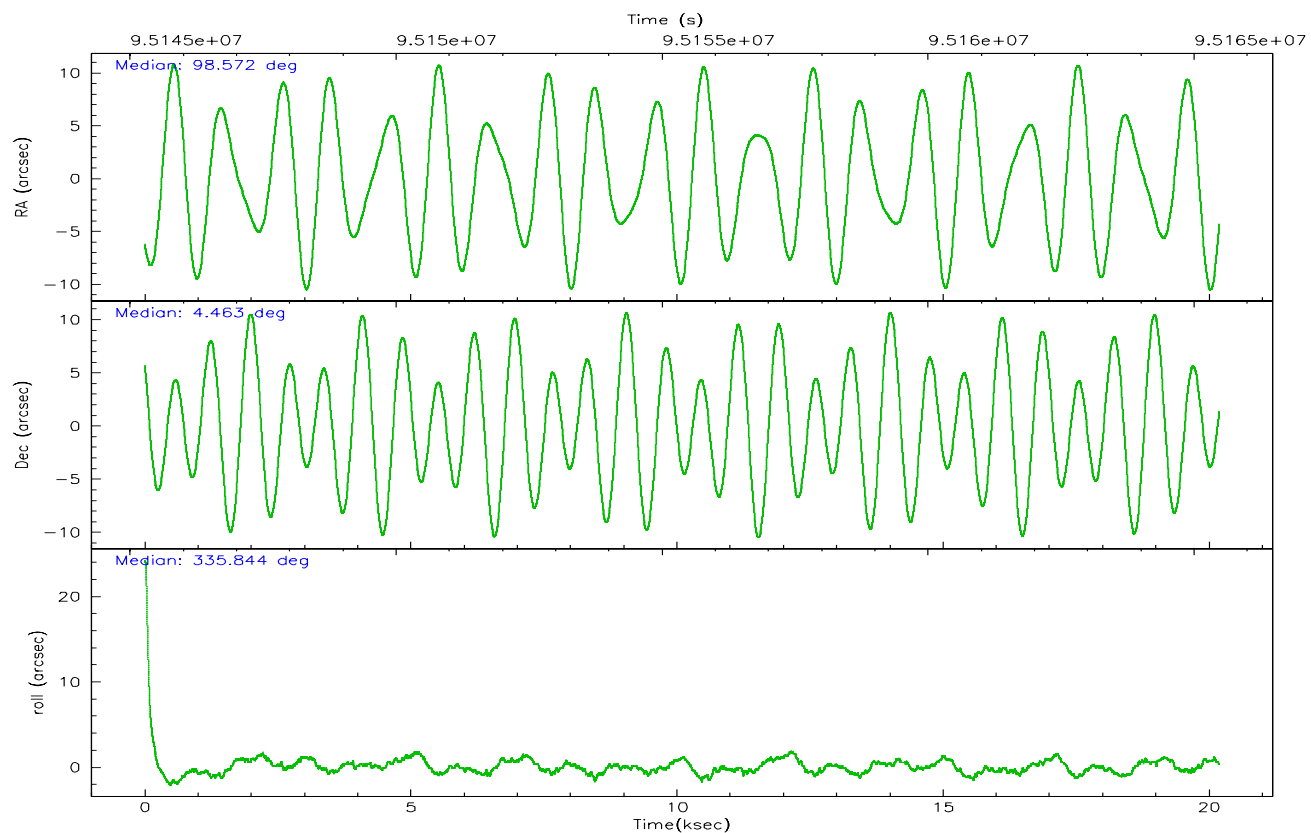
	ccd 0	ccd 1	ccd 2	ccd 3	ccd 6	ccd 7
grade 0 events	6584	6288	5438	6490	5904	3319
	6%	5%	4%	5%	4%	2%
grade 1 events	70	50	38	73	63	97
	0%	0%	0%	0%	0%	0%
grade 2 events	3033	2884	2801	2752	2851	13623
	2%	2%	2%	2%	2%	9%
grade 3 events	1427	1501	1272	1316	1342	3078
	1%	1%	1%	1%	1%	2%
grade 4 events	1374	1516	1274	1352	1266	2989
	1%	1%	1%	1%	1%	2%
grade 5 events	4155	4450	3958	4432	5002	10109
	3%	3%	3%	3%	4%	6%
grade 6 events	2347	2660	2274	2330	2731	33257
	2%	2%	1%	1%	2%	22%
grade 7 events	90233	92519	99444	101096	105008	82100
	82%	82%	85%	84%	84%	55%

## 2.2 Compared Parameters

Parameter	Planned	Actual	Parameter	Planned	Actual
Instrument	ACIS	ACIS	Obspar format version number	6	6
Detector	ACIS-012367	ACIS-012367	Obspar file type	PREDICTED	ACTUAL
Grating	NONE	NONE	Obspar update status	NONE	UPDATED
Data mode	FAINT	FAINT	Number of optional ACIS chips dropped	0	0
Observation mode	POINTING	POINTING	On-chip summing requested	N	N
Pointing RA	98.544605	98.57200241545571	Subarray requested	NONE	NONE
Pointing Dec	4.460643	4.463407741986187	Alternating exposures requested	N	N
Pointing Roll	335.646660	335.8532245423567	Primary exposure time	0.000000	3.2
SIM focus pos (mm)	-0.782348	-0.7809083437167272			
SIM defocus (mm)	0	0.001439871863259334			
SIM translation stage pos (mm)	-233.592463	-233.5874344608287			
SIM translation stage offset (mm)	0	-0.005018542100998502			
Observation start time	95145471.184000	95145095.293547			
Observation start date	2001-01-06T05:16:47	2001-01-06T05:11:35			
Observation end time	95165471.184000	95166265.64435899			
Observation end date	2001-01-06T10:50:07	2001-01-06T11:04:25			
Read mode	TIMED	TIMED			

## 2.3 Aspect





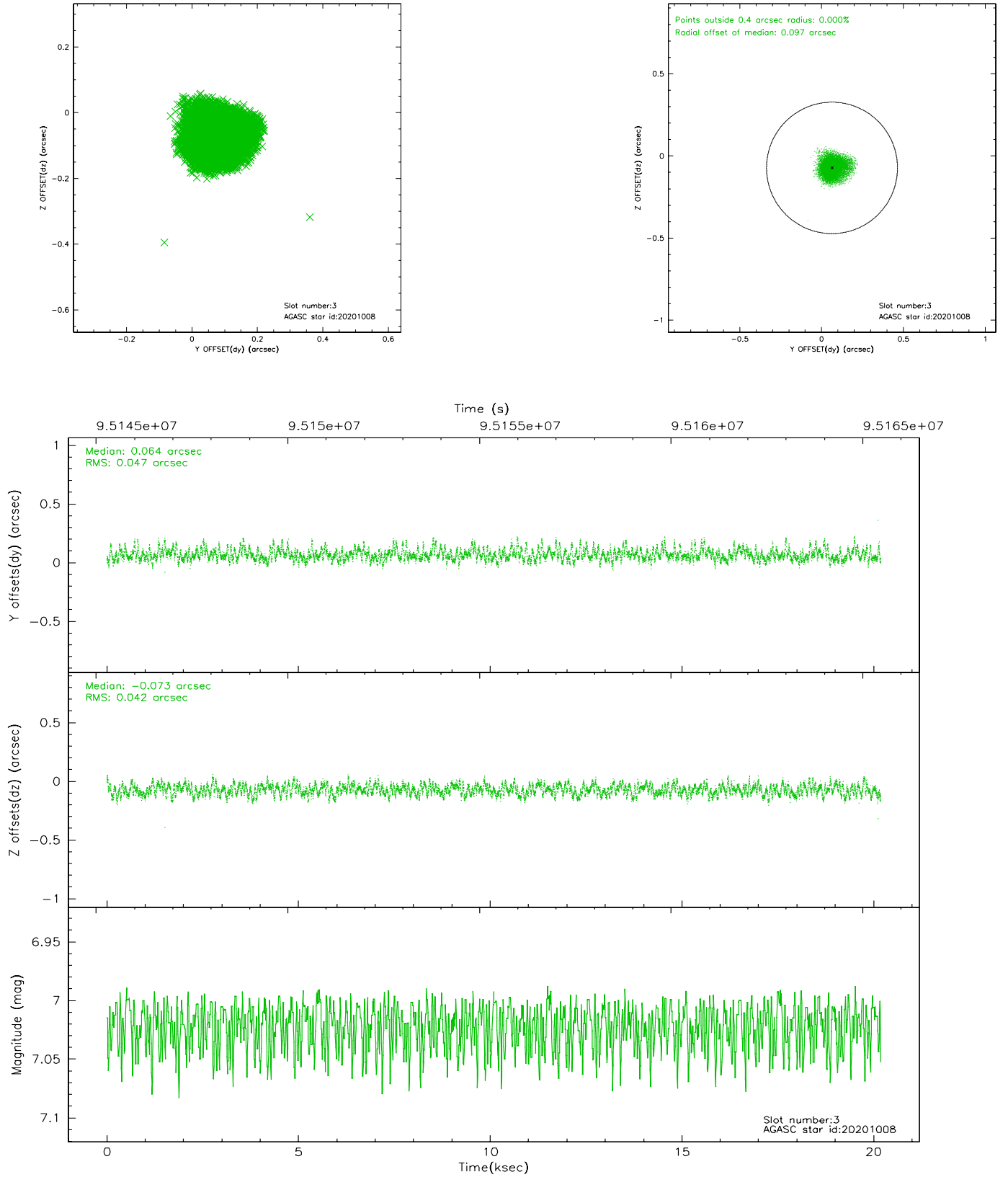
### Slot Statistics

slot	status	id	mag	n_pts	med_dy	med_dz	dr1	dr2	ra	dec	mean_y	mean_z
0	FID	ACIS-I-3	7.45	4924	0.001	0.216	0.008	0.014	0.000000	0.000000	56.00	-961.08
1	FID	ACIS-I-4	7.19	4924	-0.087	-0.086	0.007	0.011	0.000000	0.000000	2158.45	1071.55
2	FID	ACIS-I-5	7.23	4925	-0.013	-0.061	0.007	0.012	0.000000	0.000000	-1809.20	1069.65
3	GUIDE	20201008	7.02	9848	0.064	-0.073	0.067	0.108	99.000440	4.498035	1434.54	797.82
4	GUIDE	20188568	7.67	9848	0.047	-0.157	0.051	0.088	98.433538	5.215985	-1484.39	2312.80
5	GUIDE	20203472	7.85	9847	-0.064	0.109	0.042	0.068	98.653479	4.344261	528.54	-220.13
6	GUIDE	20188448	8.36	9849	-0.012	0.067	0.068	0.111	98.813908	3.968896	1611.21	-1213.56
7	GUIDE	20200352	8.70	9784	-0.041	0.058	0.061	0.100	98.276155	4.071797	-300.80	-1672.76

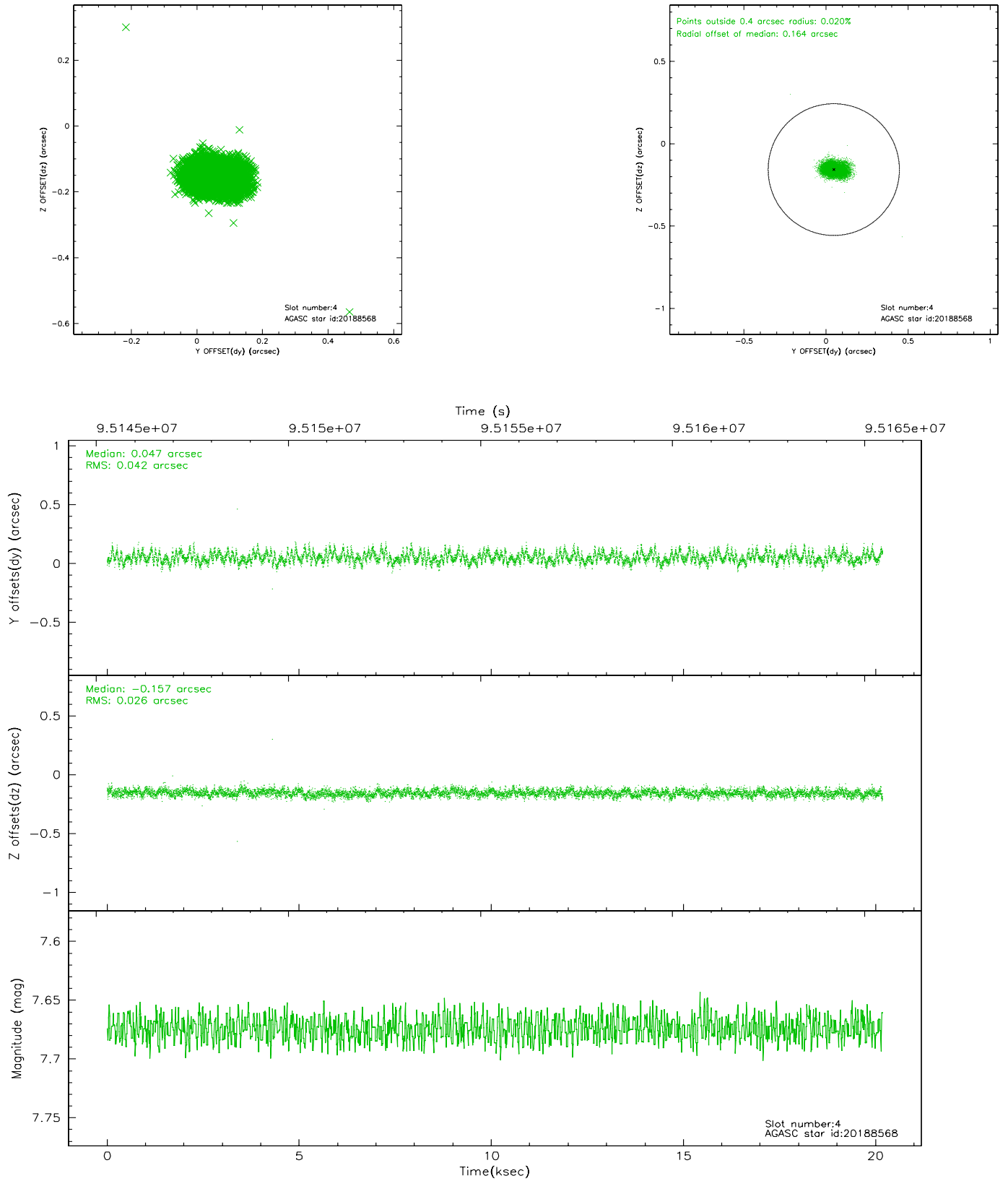


## 2.4 Star Slots

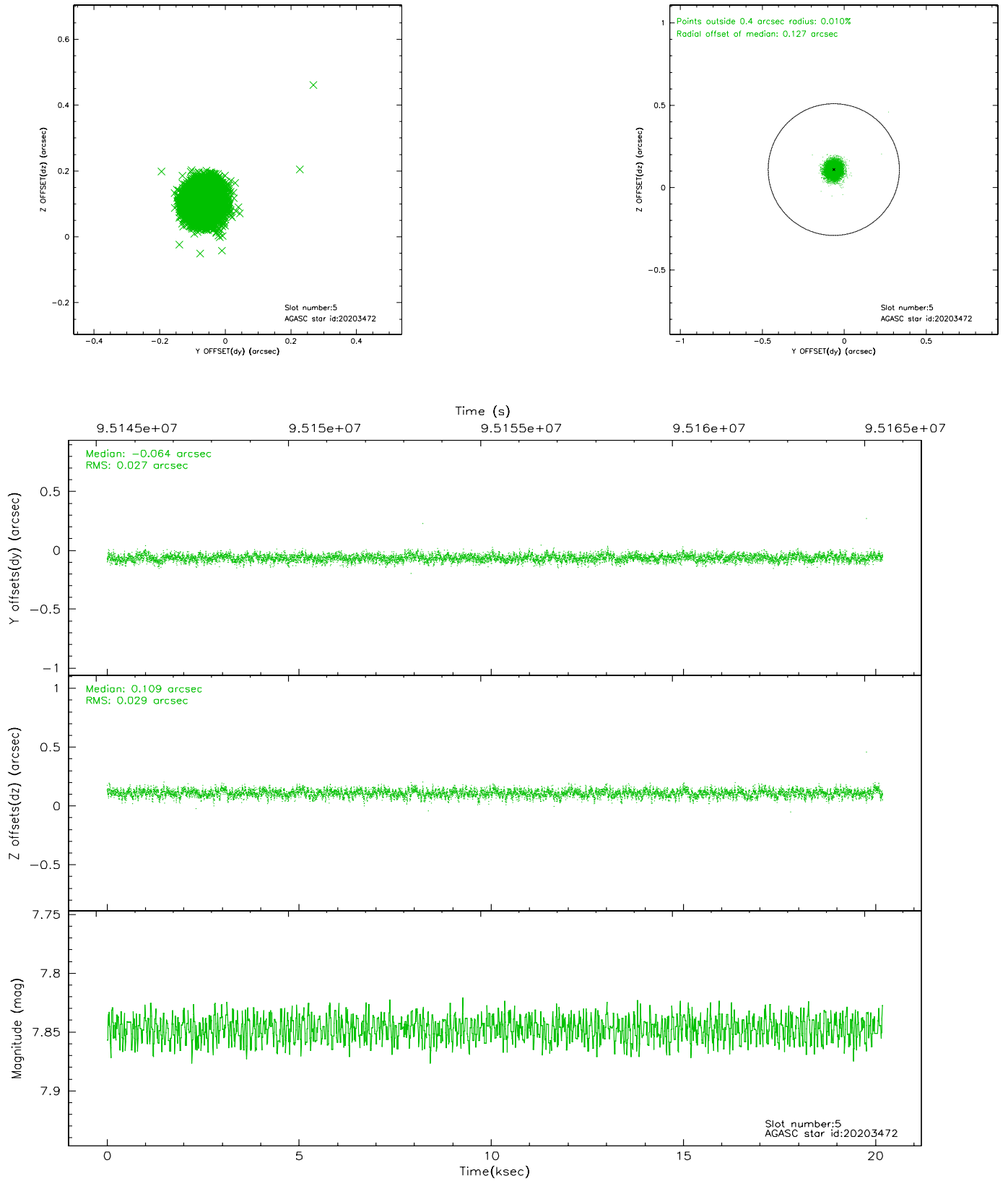
### 2.4.1 Slot 3



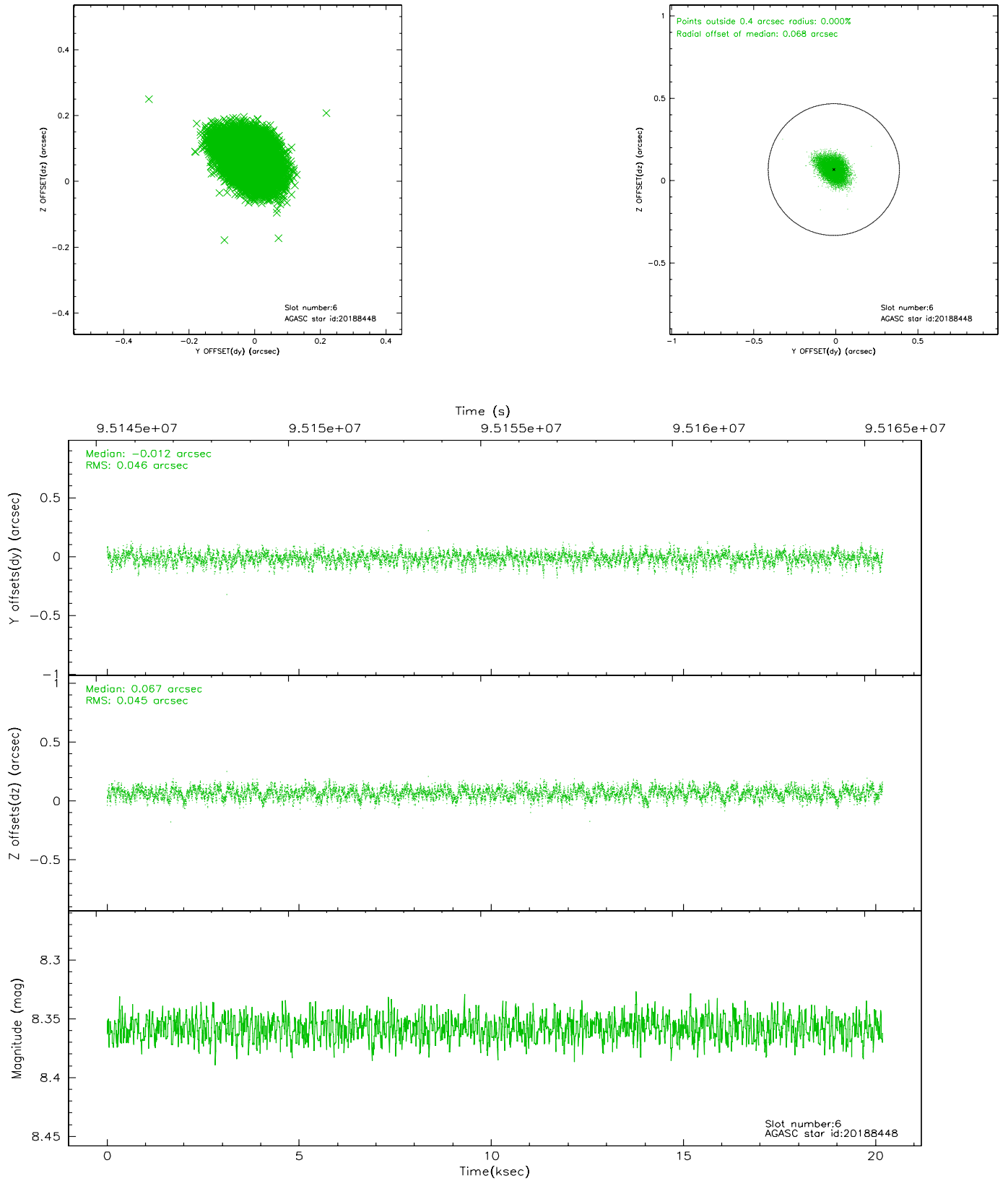
## 2.4.2 Slot 4



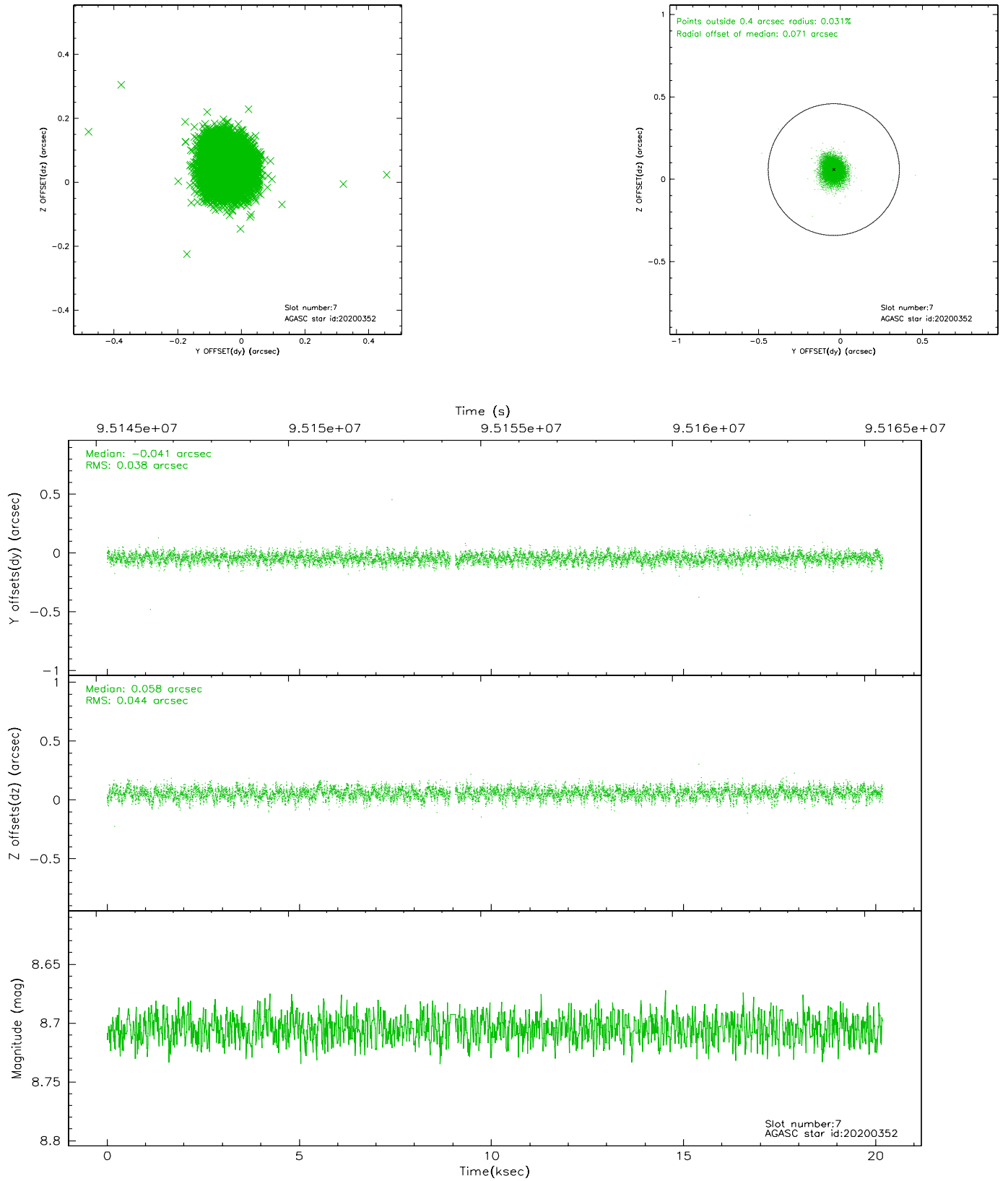
### 2.4.3 Slot 5



## 2.4.4 Slot 6

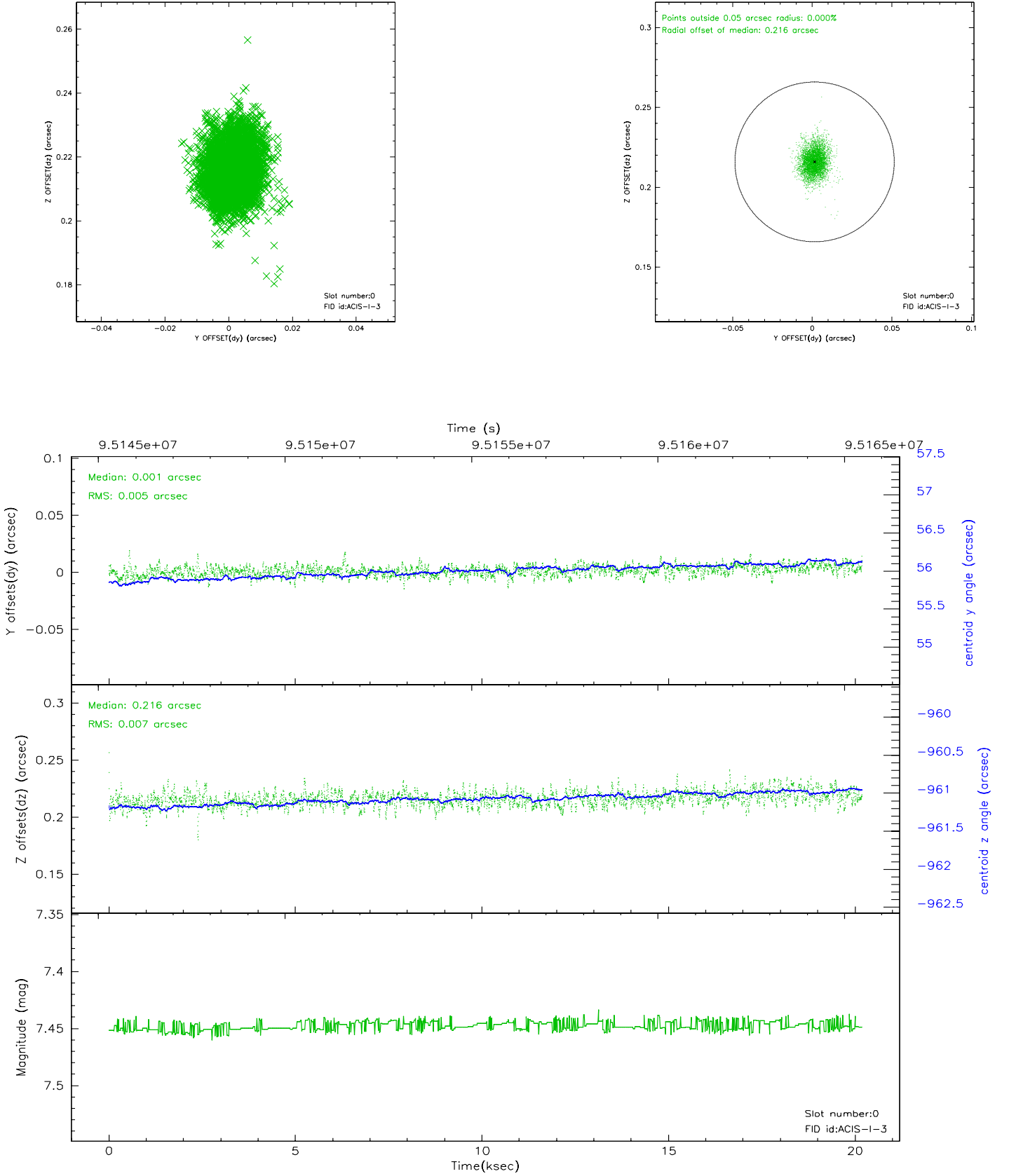


## 2.4.5 Slot 7

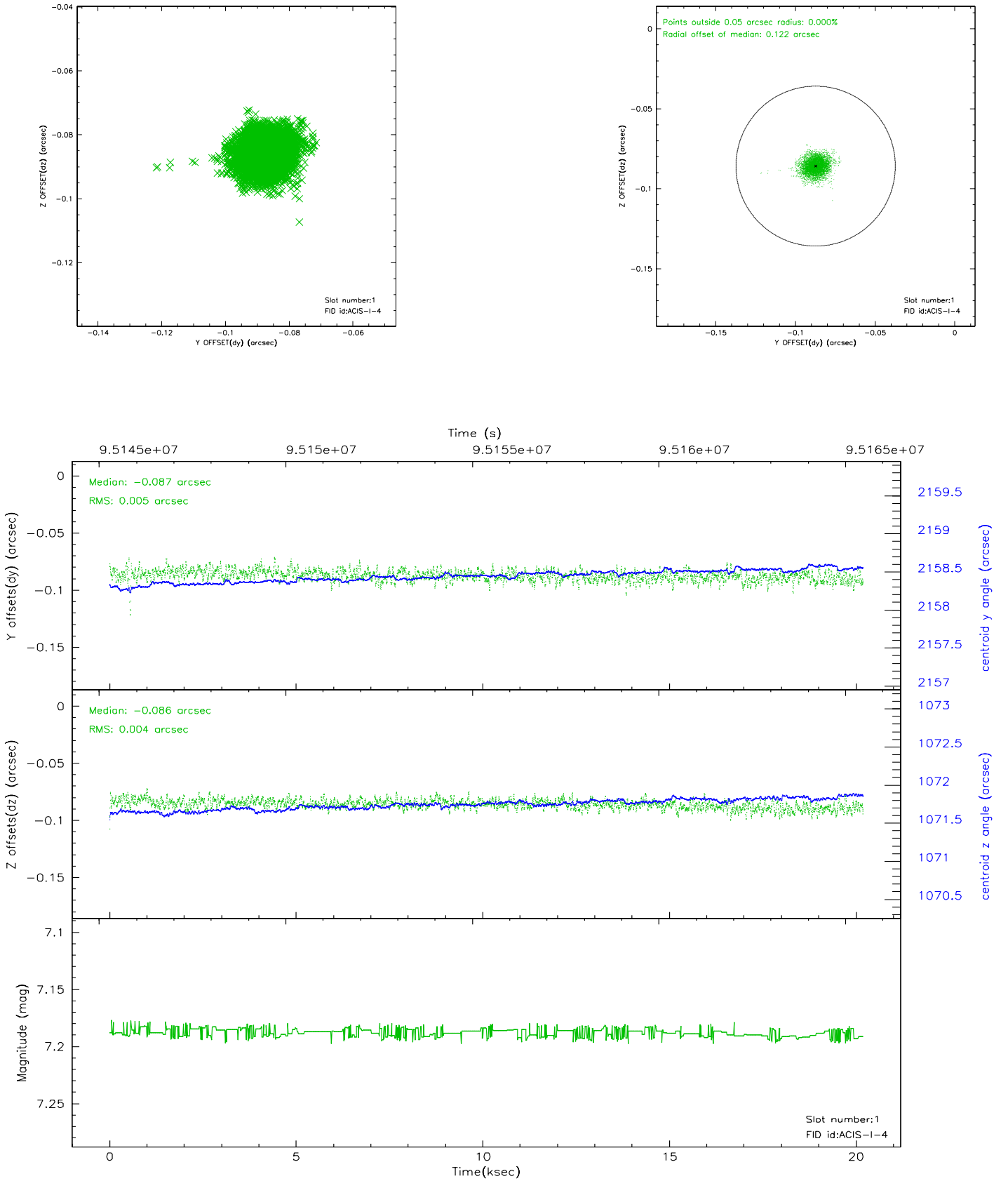


## 2.5 FID Slots

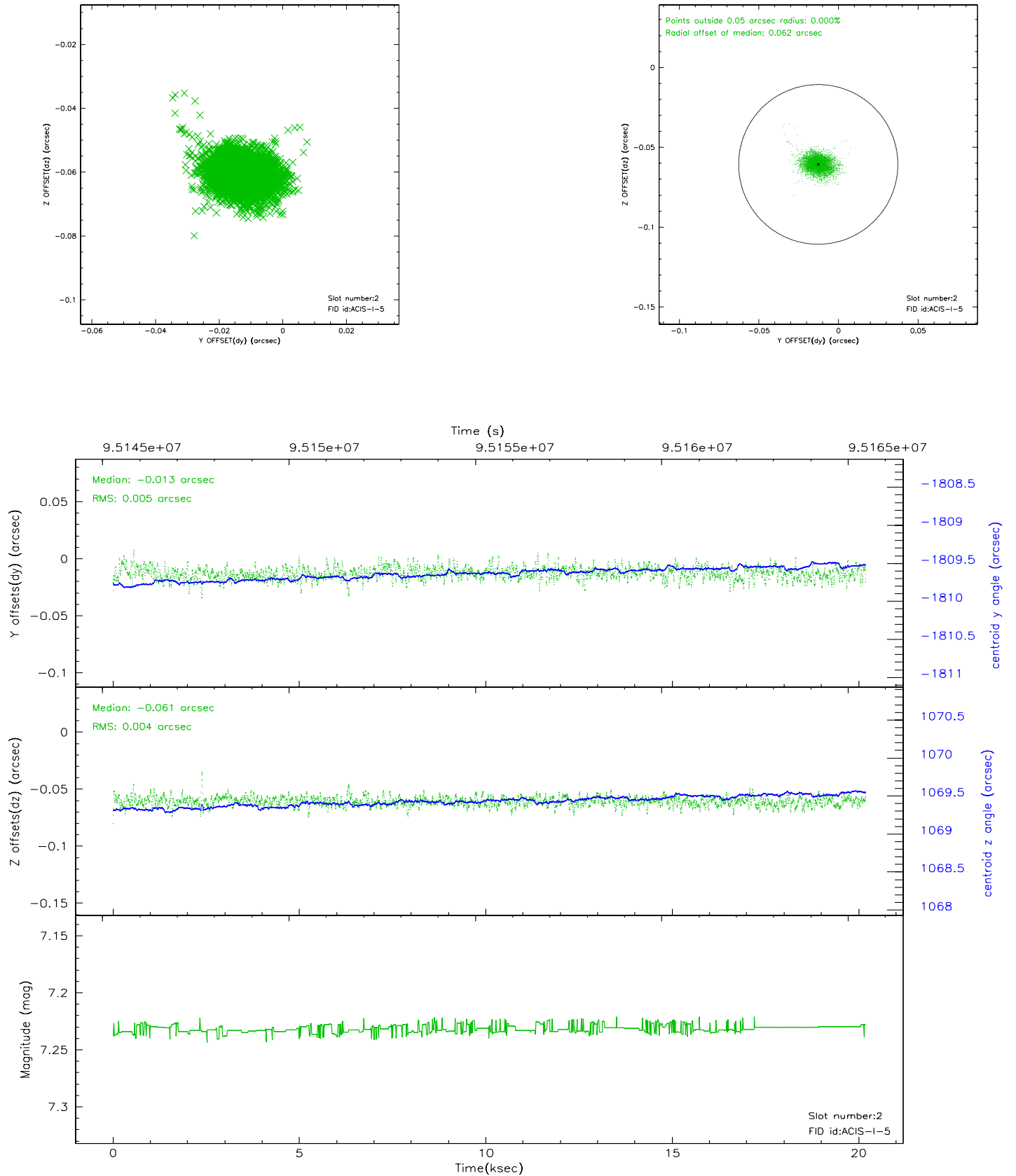
### 2.5.1 Slot 0



## 2.5.2 Slot 1

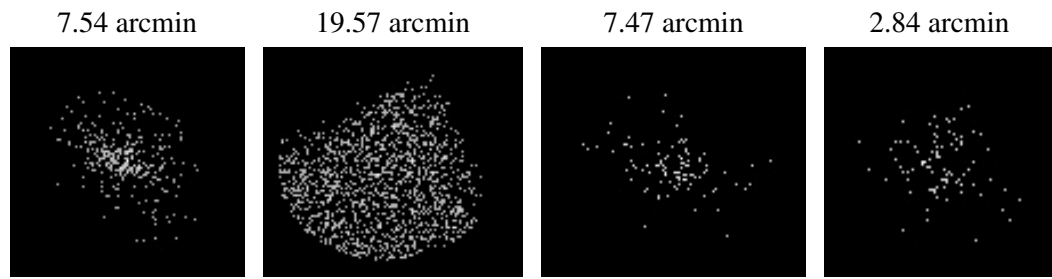


### 2.5.3 Slot 2





### 3 Point Sources



## A Summary

### A.1 Status

V&V Scientist	Jen Lauer
V&V Date (YYYY-MM-DD)	2006.11.02
V&V Edition	1
V&V Disposition and Status	OK
V&V Charge Time	19.76

### A.2 Comments