

V&V Reference Report

L2 ASCDS Version : 7.6.9

Observation 1869 - L2 Version 001
Chandra X-Ray Center

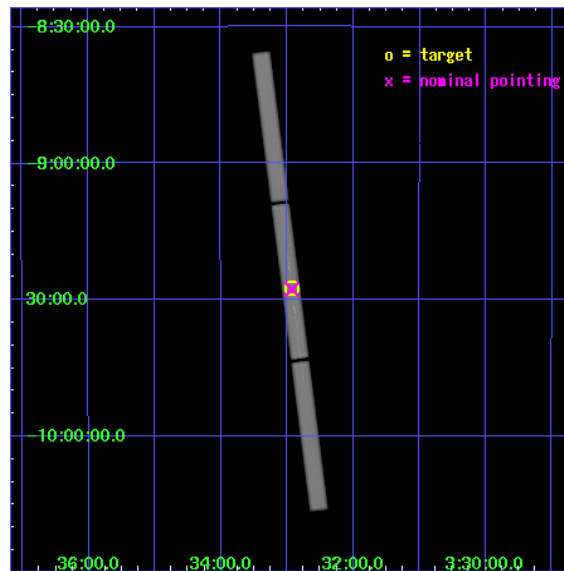
L2 Processing Date : Nov 16 2006

Contents

1	Front	2
2	OBI	3
2.1	OBI	3
2.1.1	Images	3
2.1.2	Parameters	4
2.1.3	Events	4
2.2	Compared Parameters	5
2.3	Aspect	6
2.4	Star Slots	9
2.4.1	Slot 3	9
2.4.2	Slot 4	10
2.4.3	Slot 5	11
2.4.4	Slot 6	12
2.4.5	Slot 7	13
2.5	FID Slots	14
2.5.1	Slot 0	14
2.5.2	Slot 1	15
2.5.3	Slot 2	16
3	Gratings	17
3.1	LETG Arm	17
A	Summary	19
A.1	Status	19
A.2	Comments	19

1 Front

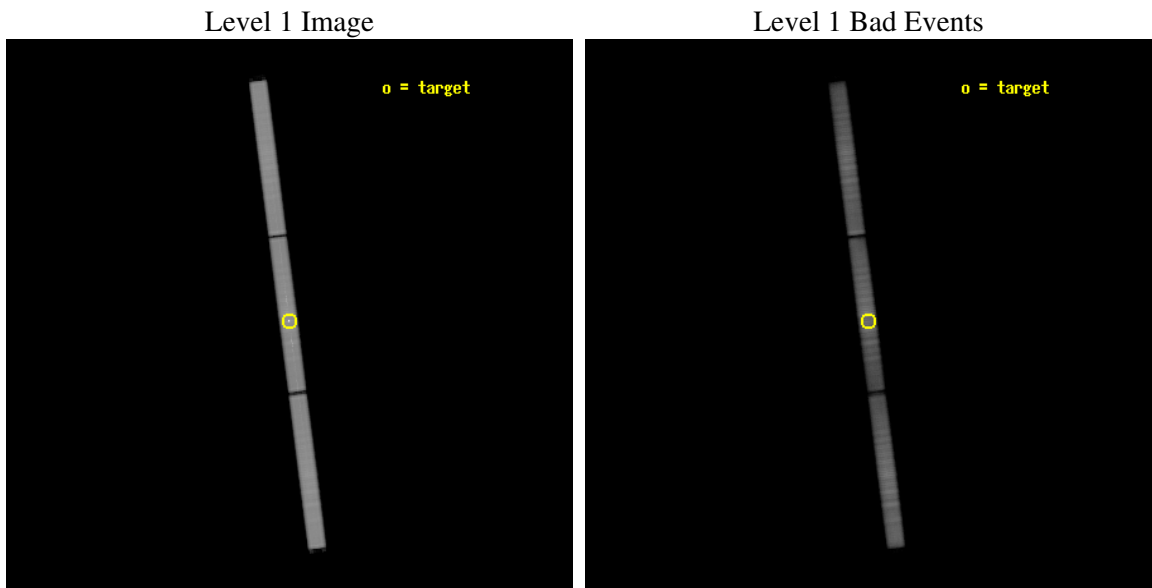
seq_num	200097
obs_id	1869
title	A HIGH RESOLUTION X-RAY SPECTRUM OF THE INTERMEDIATE ACTIVITY STAR \$EPSILON\$ ERI
observer	Dr. Jorgen Schmitt
object	EPSILON ERI
ra_targ	53.2325
dec_targ	-9.458333
ra_nom	53.231690058967
dec_nom	-9.4630499690678
roll_nom	262.58913354433
revision	3
ontime	105945.02910167
livetime	105342.72963005
l2events	4262266



2 OBI

2.1 OBI

2.1.1 Images



2.1.2 Parameters

obi_num	0
ascdsver	7.6.9
caldsver	3.2.4
date	2006-11-15T23:51:13
revision	3

sched_exp_time	105817.381000
ontime	105945.02910167
l1events	6673208

2.1.3 Events

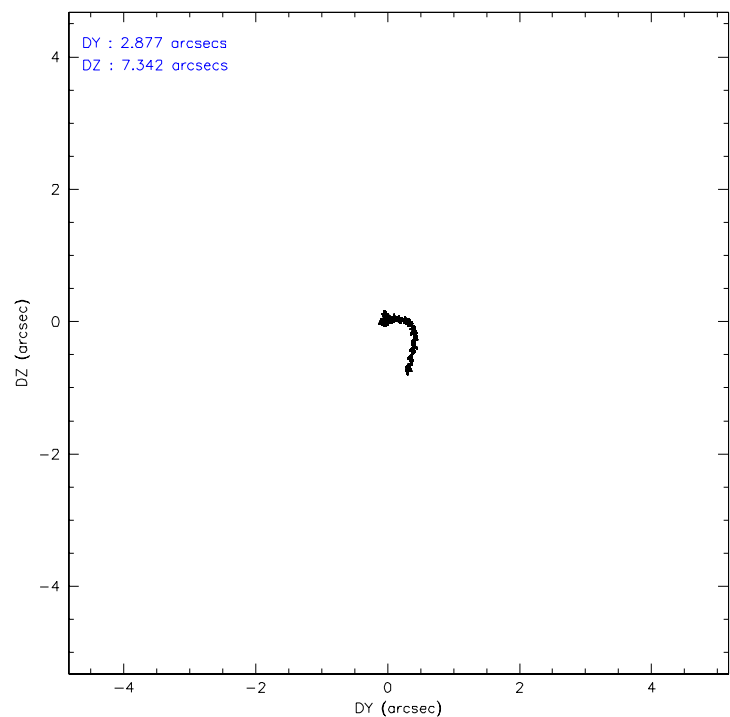
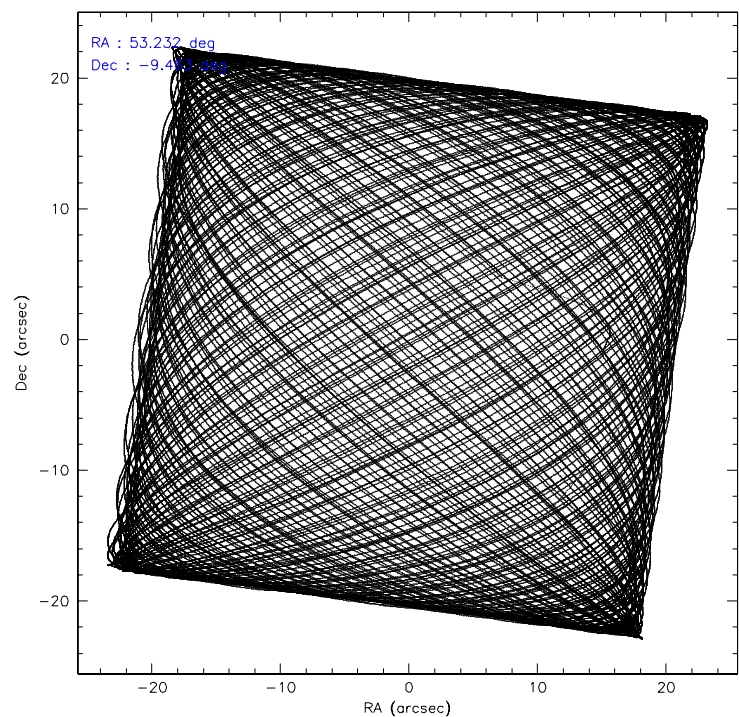
Level 1 Events

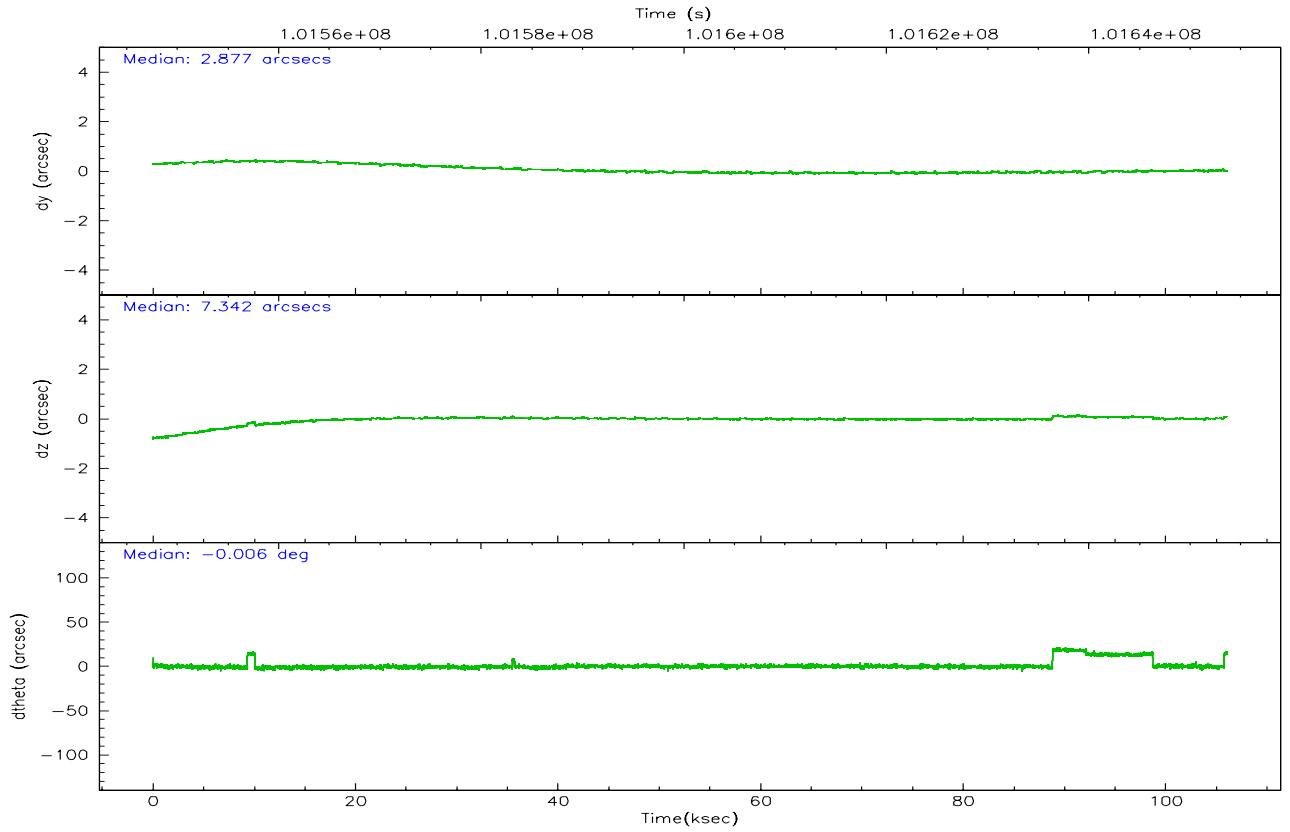
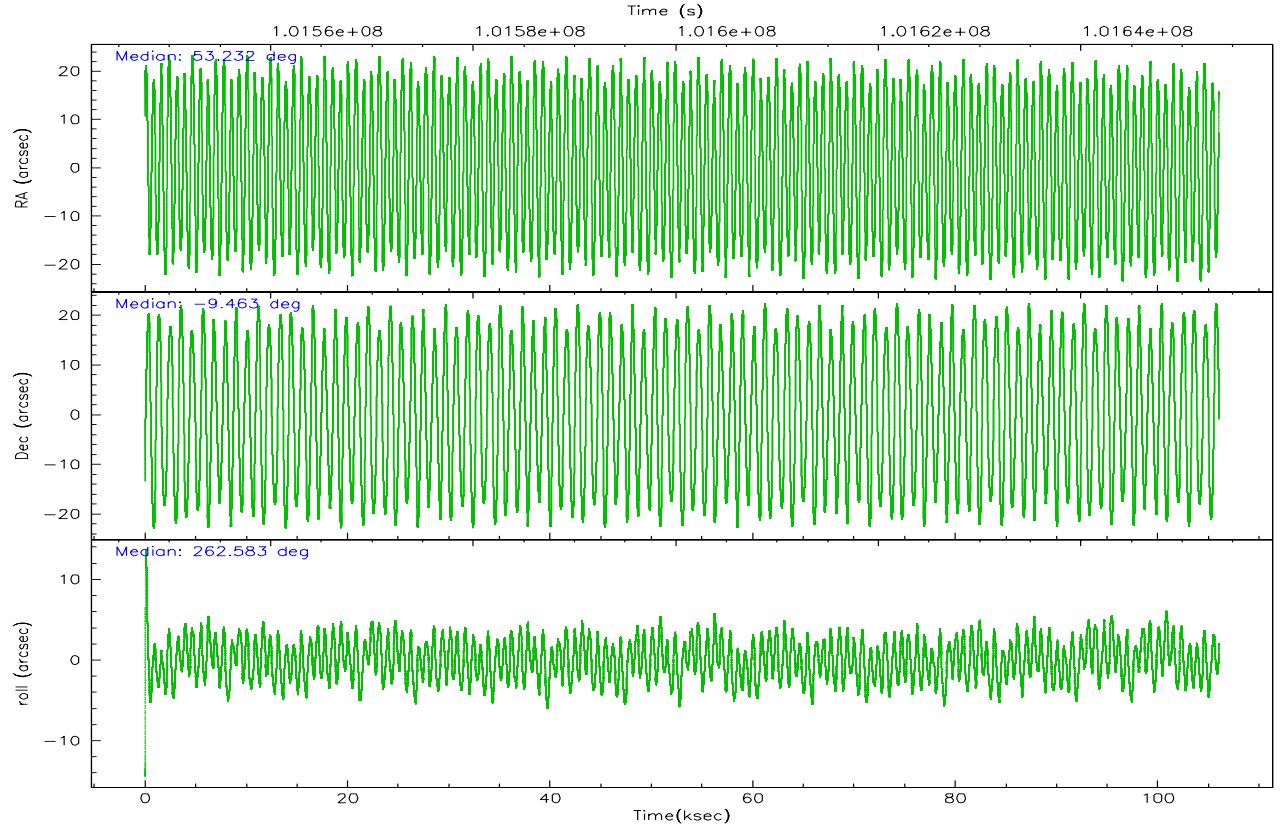
	segment 1	segment 2	segment 3
level 1 events	2225748	2213827	2233633
rejected events	550361	586066	661698
rejected %	24%	26%	29%

2.2 Compared Parameters

Parameter	Planned	Actual	Parameter	Planned	Actual
Instrument	HRC	HRC	Obspar format version number	6	6
Detector	HRC-S	HRC-S	Obspar file type	PREDICTED	ACTUAL
Grating	LETG	LETG	Obspar update status	NONE	UPDATED
Data mode	OBSERVING	OBSERVING			
Observation mode	POINTING	POINTING			
Pointing RA	53.219301	53.23169005896737			
Pointing Dec	-9.437120	-9.463049969067763			
Pointing Roll	262.519774	262.5891335443262			
SIM focus pos (mm)	-1.429586	-1.428180813131781			
SIM defocus (mm)	0.1037507710433287	0.1051558262725154			
SIM translation stage pos (mm)	250.455976	250.466033080201			
SIM translation stage offset (mm)	0	-0.01005468664627074			
Observation start time	101547724.184000	101546295.87772			
Observation start date	2001-03-21T07:41:00	2001-03-21T07:18:15			
Observation end time	101653542.184000	101654262.7194			
Observation end date	2001-03-22T13:04:38	2001-03-22T13:17:42			

2.3 Aspect



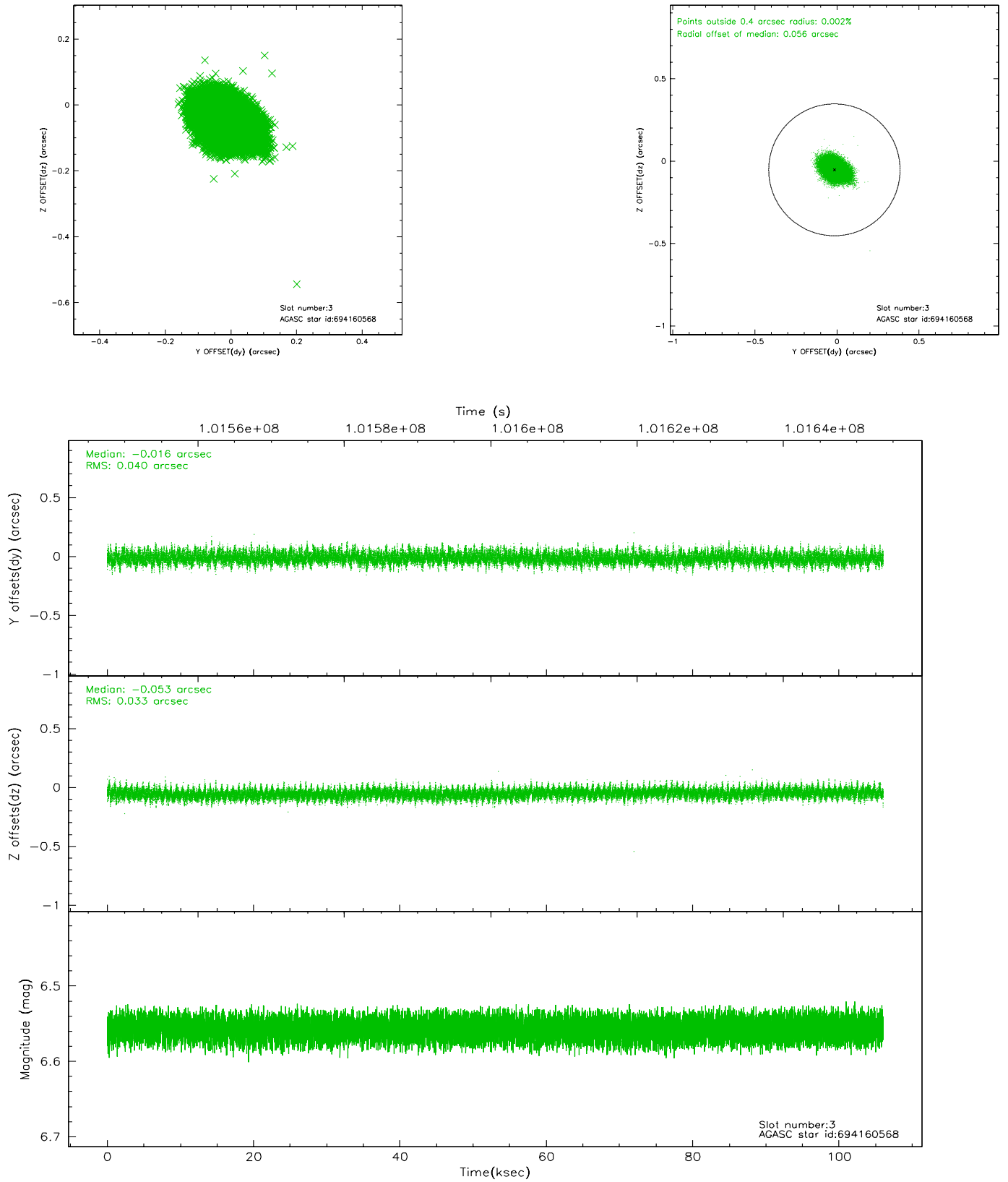


Slot Statistics

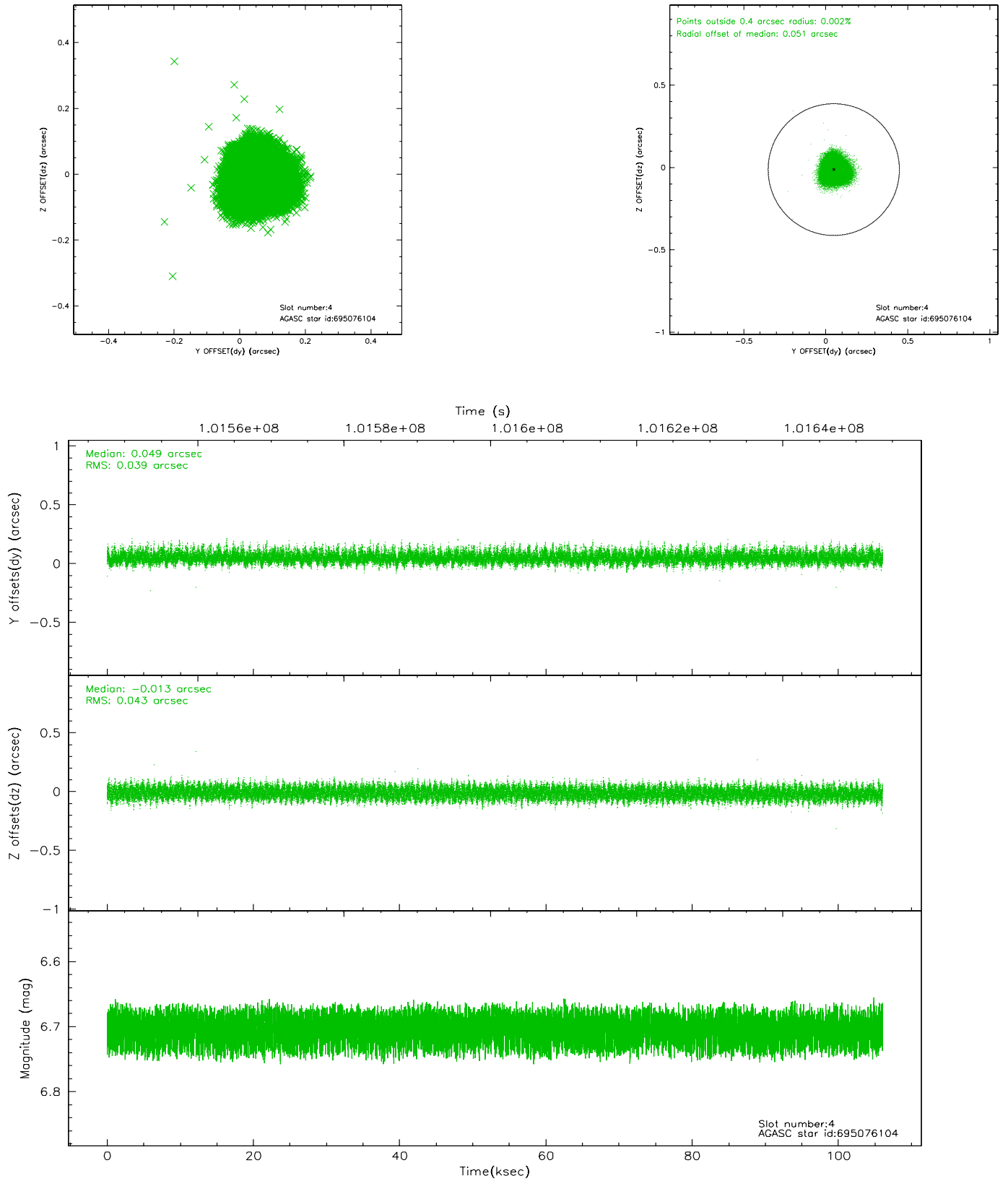
slot	status	id	mag	n_pts	med_dy	med_dz	dr1	dr2	ra	dec	mean_y	mean_z
0	FID	HRC-S-1	6.98	25859	0.096	-0.080	0.009	0.028	0.000000	0.000000	-1157.01	-455.85
1	FID	HRC-S-3	7.00	25862	0.155	-0.130	0.010	0.044	0.000000	0.000000	-1159.76	573.61
2	FID	HRC-S-4	6.93	25860	0.137	-0.086	0.006	0.021	0.000000	0.000000	1241.21	576.34
3	GUIDE	694160568	6.56	51735	-0.016	-0.053	0.055	0.092	52.669131	-9.730241	1302.64	-1797.79
4	GUIDE	695076104	6.70	51737	0.049	-0.013	0.062	0.099	53.656138	-9.868261	1338.64	1738.56
5	GUIDE	694159488	9.35	51705	0.014	0.060	0.092	0.146	53.580158	-9.192167	-1040.18	1156.84
6	GUIDE	694159576	9.47	51710	-0.024	-0.069	0.089	0.146	53.010154	-8.811011	-2137.13	-1031.39
7	GUIDE	695075800	9.05	51717	-0.027	0.073	0.084	0.131	53.698812	-9.903220	1443.80	1904.95

2.4 Star Slots

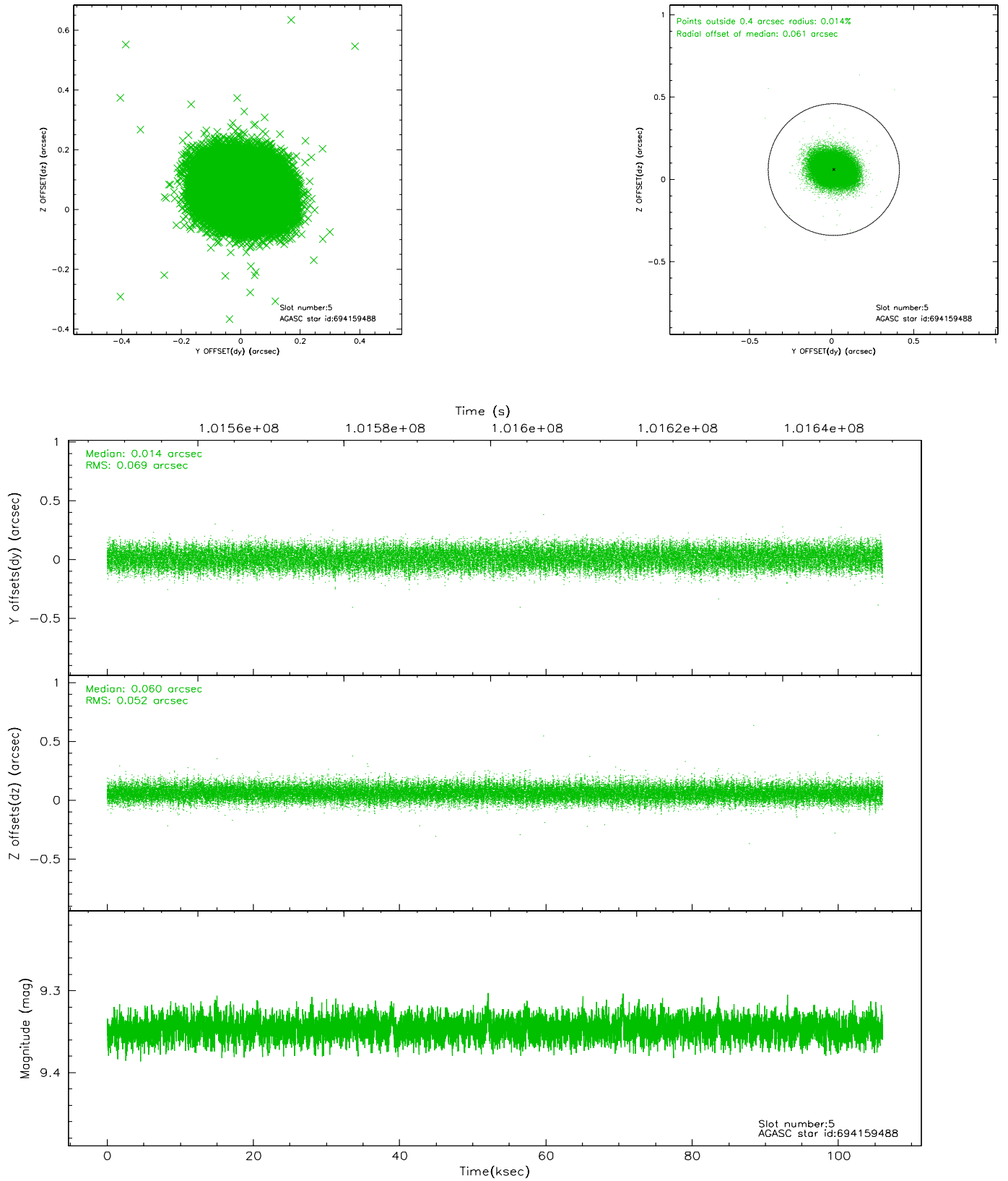
2.4.1 Slot 3



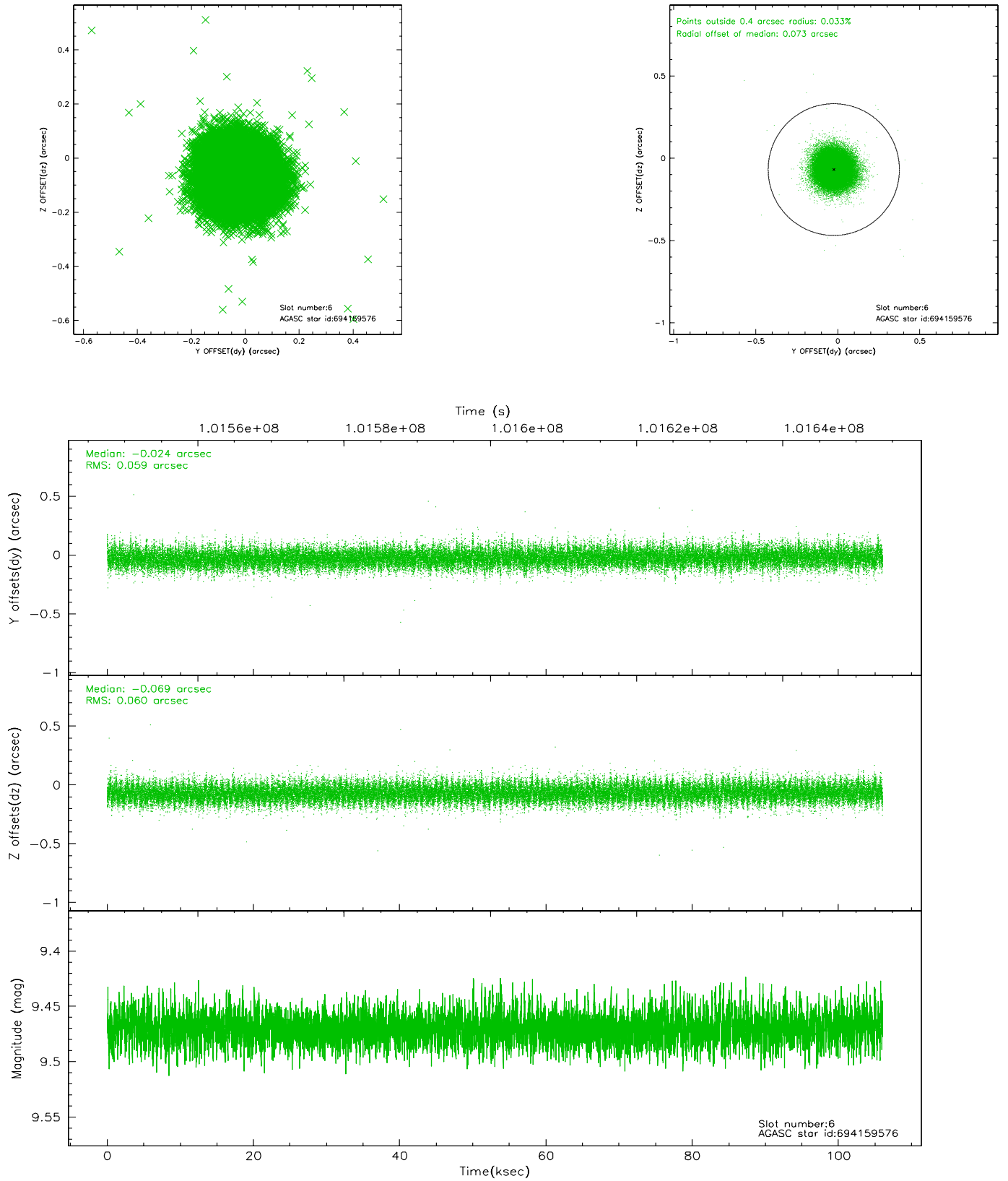
2.4.2 Slot 4



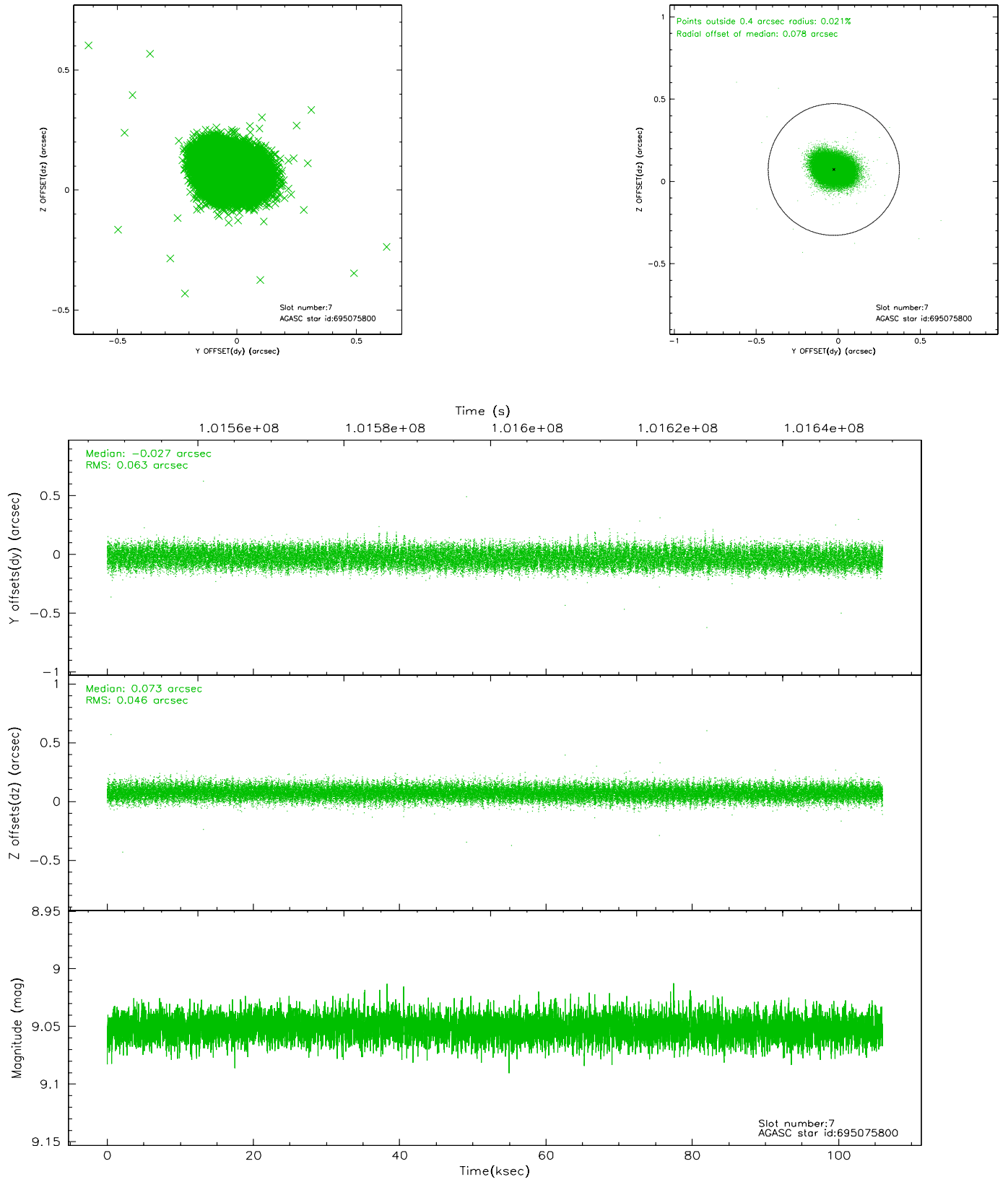
2.4.3 Slot 5



2.4.4 Slot 6

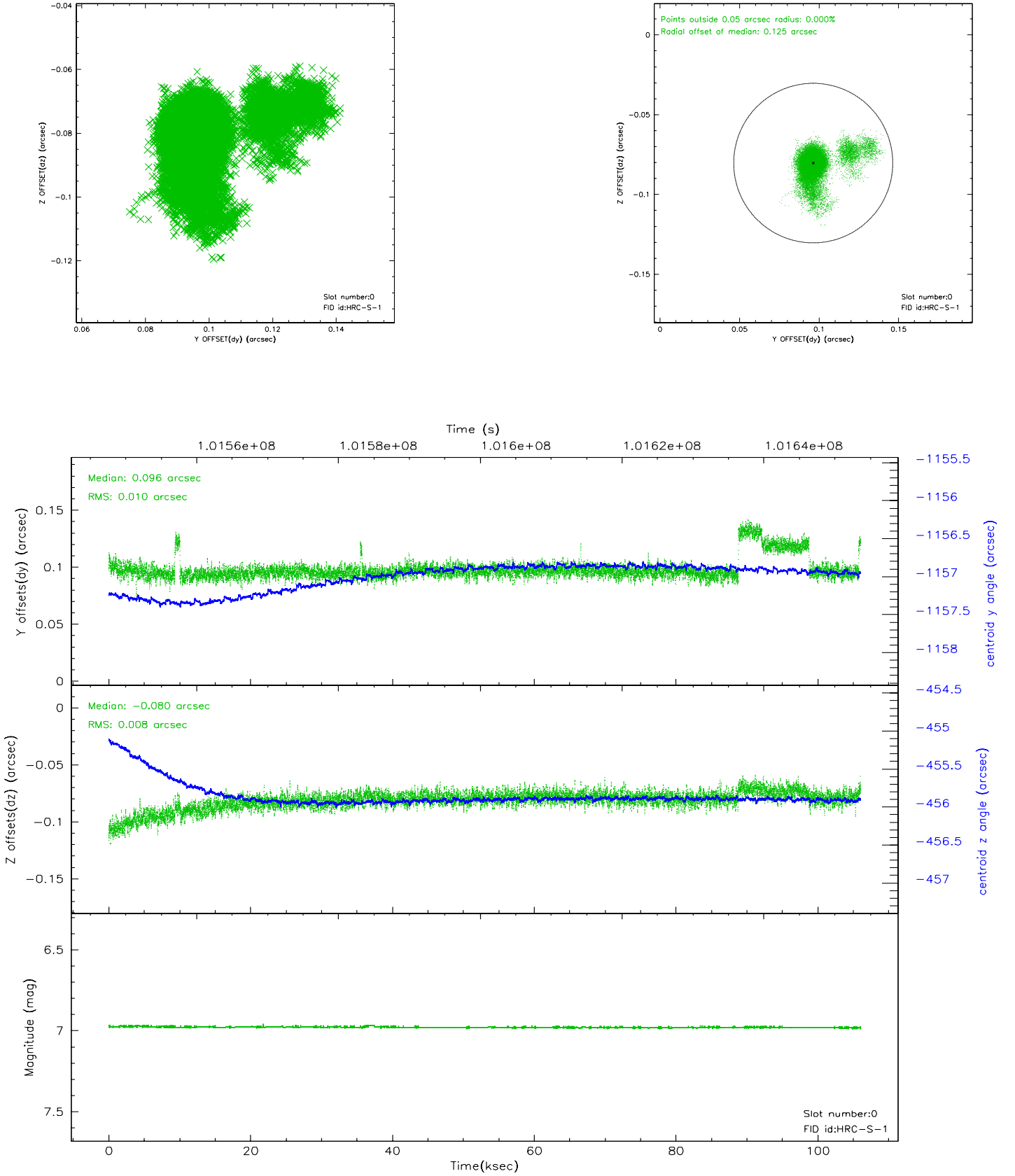


2.4.5 Slot 7

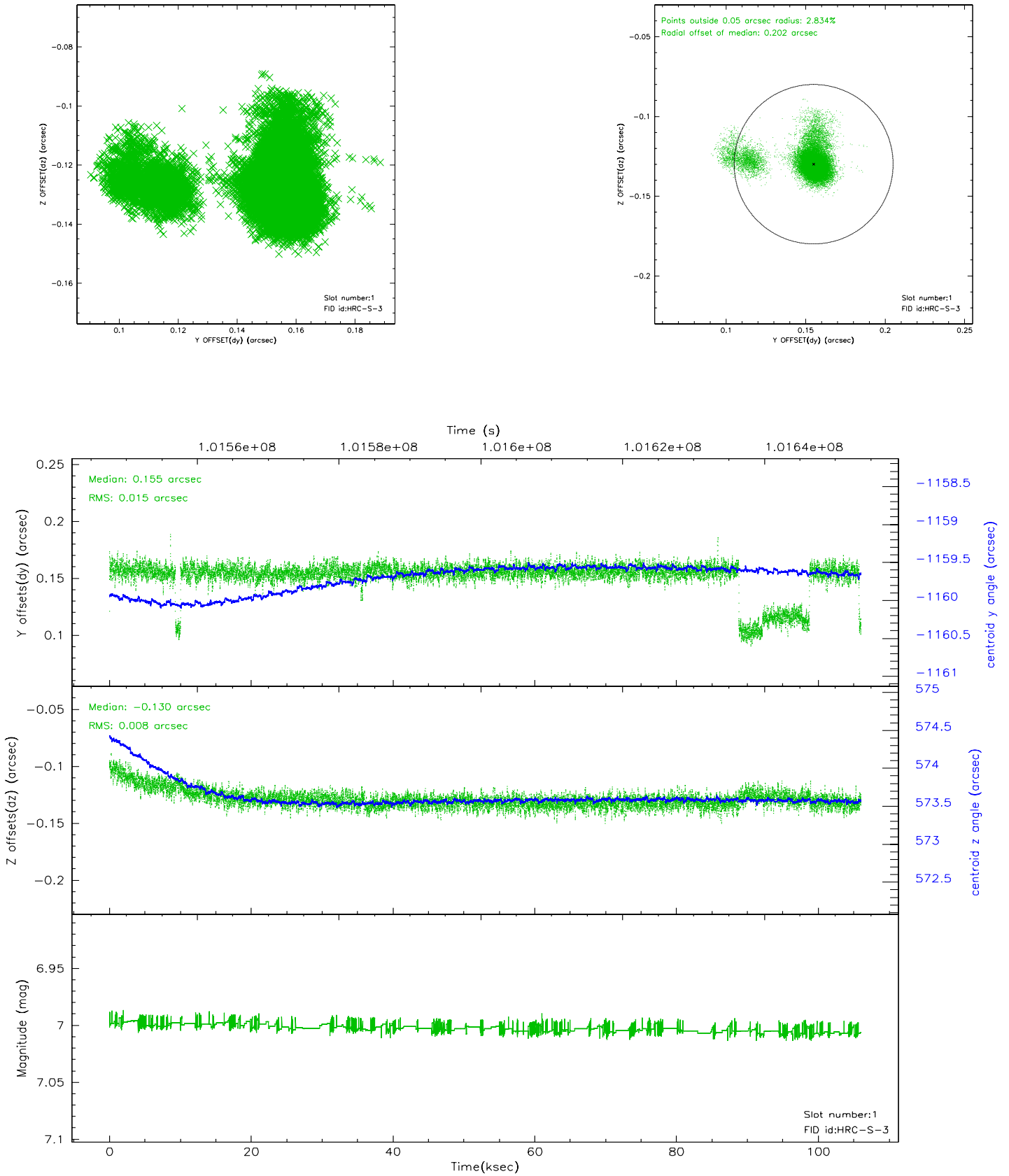


2.5 FID Slots

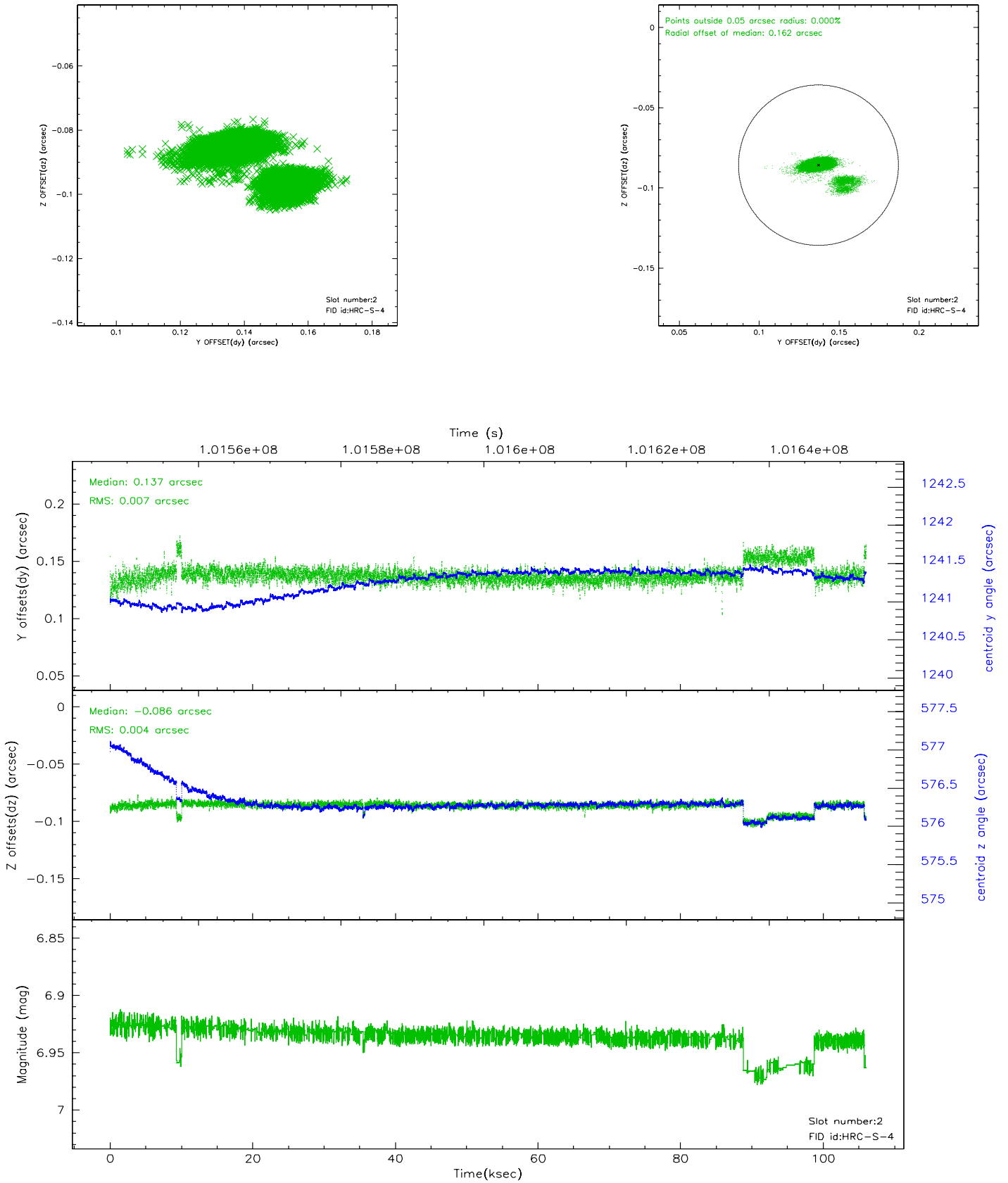
2.5.1 Slot 0



2.5.2 Slot 1

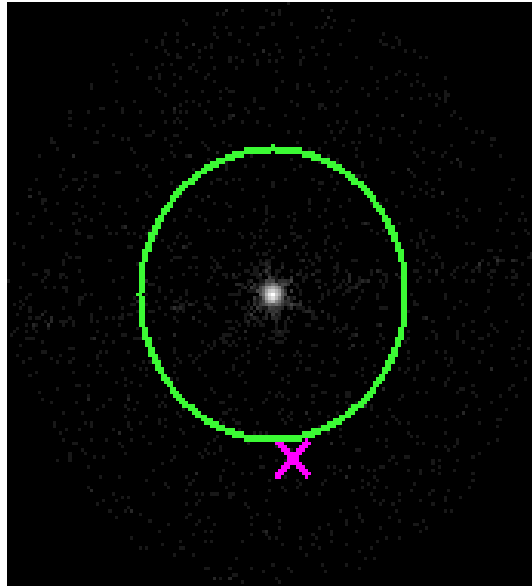


2.5.3 Slot 2



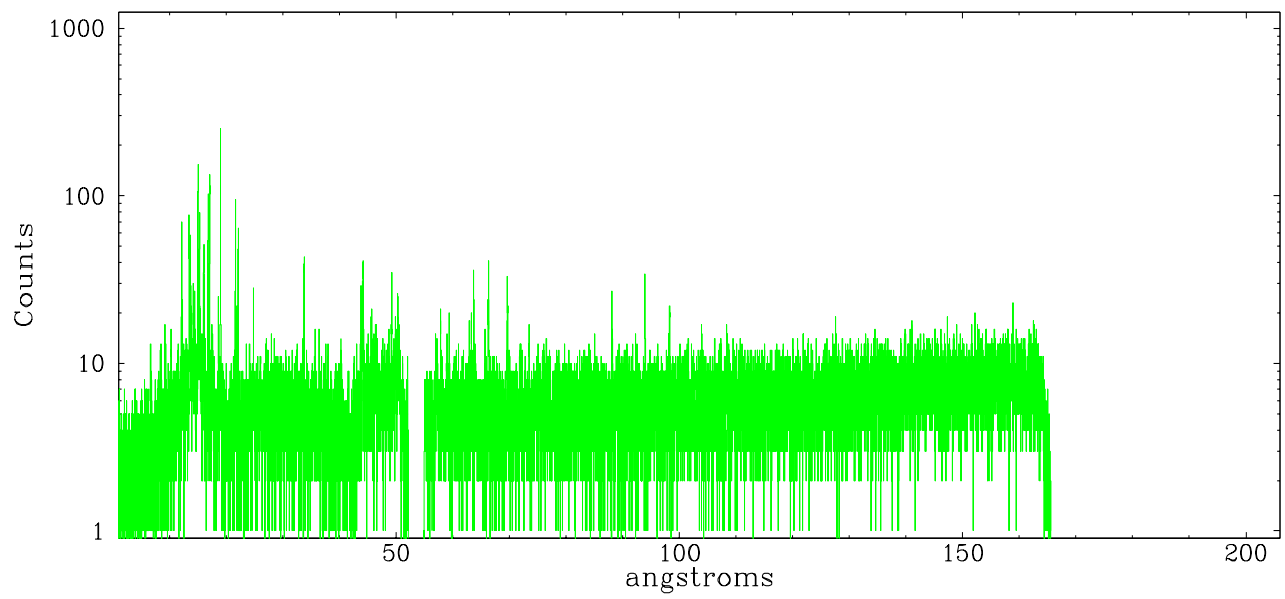
3 Gratings

3.1 LETG Arm

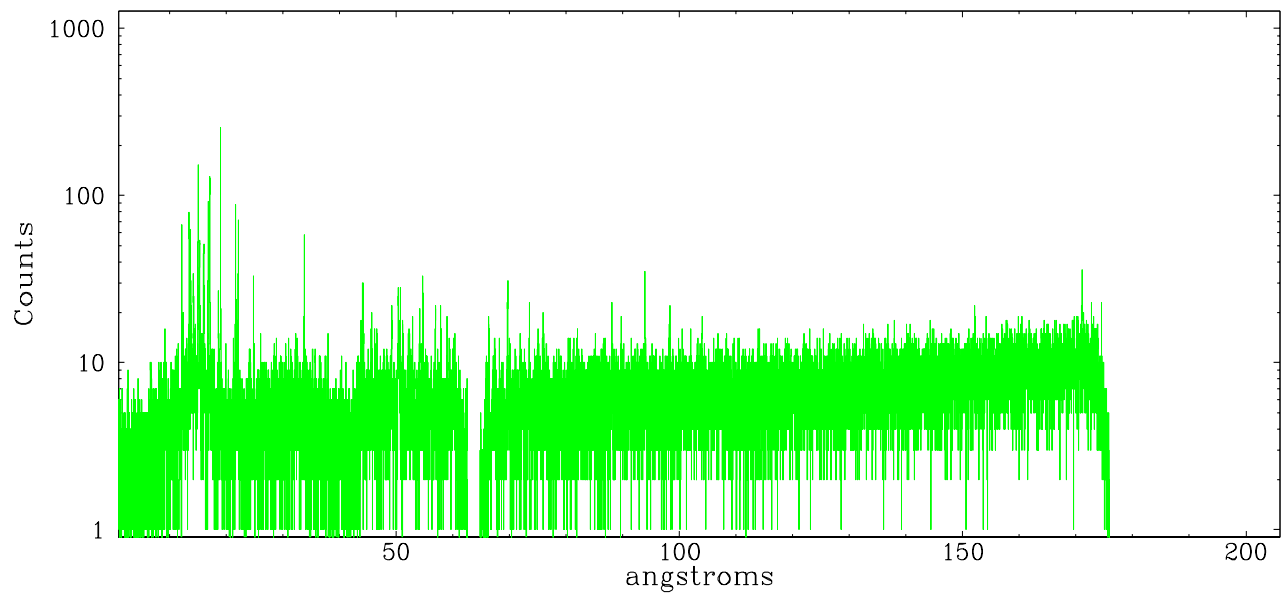


LETG Zero Order

leg order -1



leg order +1



A Summary

A.1 Status

V&V Scientist	Jen Lauer
V&V Date (YYYY-MM-DD)	2006.12.15
V&V Edition	1
V&V Disposition and Status	OK
V&V Charge Time	105.908

A.2 Comments