

V&V Reference Report

L2 ASCDS Version : 8.4.5

Observation 1868 - L2 Version 4
Chandra X-Ray Center

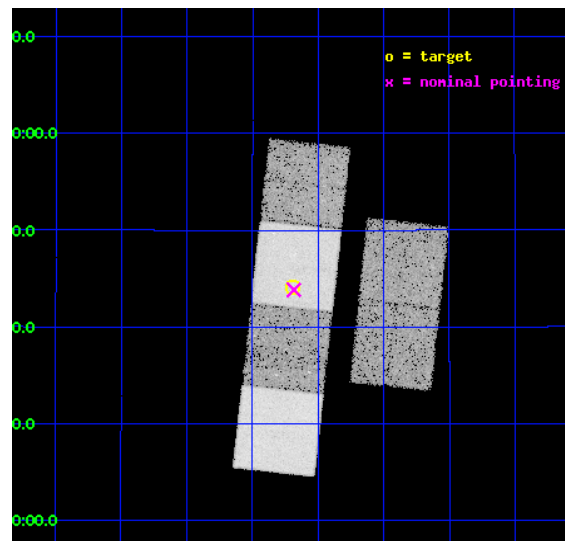
L2 Processing Date : Sep 25 2012

Contents

1	Front	2
2	OBI	3
2.1	OBI	3
2.1.1	Images	3
2.1.2	Bias	3
2.1.3	Parameters	4
2.1.4	Events	4
2.2	Compared Parameters	5
2.3	Aspect	6
2.4	Star Slots	9
2.4.1	Slot 3	9
2.4.2	Slot 4	10
2.4.3	Slot 5	11
2.4.4	Slot 6	12
2.4.5	Slot 7	13
2.5	FID Slots	14
2.5.1	Slot 0	14
2.5.2	Slot 1	15
2.5.3	Slot 2	16
A	Summary	17
A.1	Status	17
A.2	Comments	17

1 Front

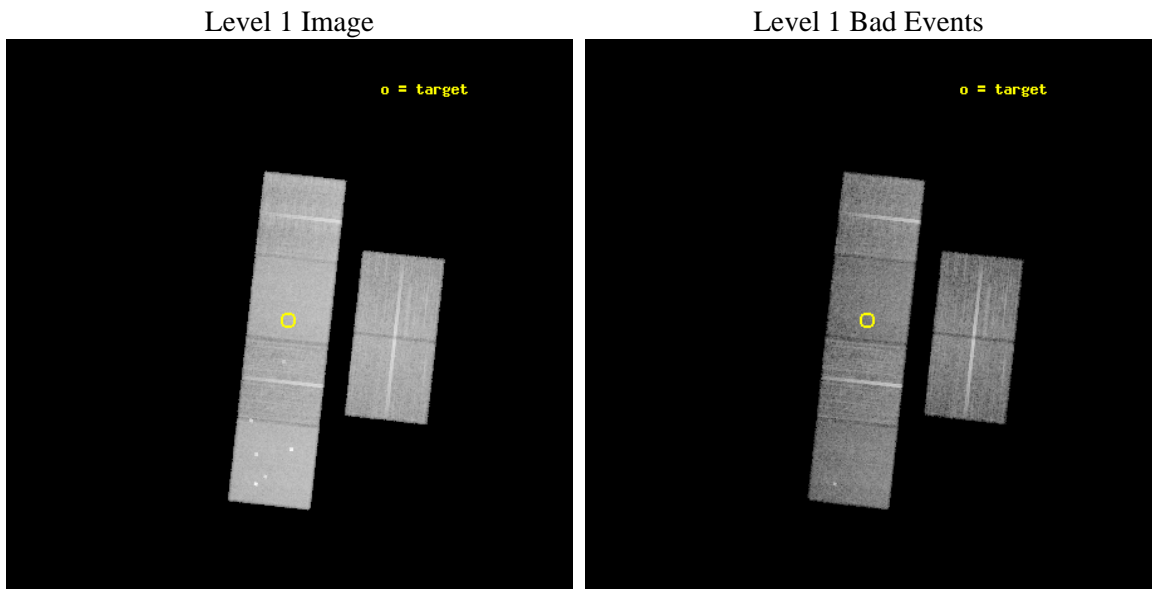
seq_num	200096	Sequence number
obs_id	1868	Observation id
title	HIGH ENERGY PROCESSES AT THE EARLIEST STAGES OF MASSIVE STAR FORMATION	Proposal title
observer	Dr. Henrik Beuther	Principal investigator
object	19410+2336	Source name
dtcycle	0	
cycle	P	events from which exps? Prim/Second/Both
ra_targ	295.7975	Observer's specified target RA [deg]
dec_targ	23.735	Observer's specified target Dec [deg]
ra_nom	295.79611223718	Nominal RA [deg]
dec_nom	23.730752971259	Nominal Dec [deg]
roll_nom	276.31858828799	Nominal Roll [deg]
revision	4	Processing version of data
ontime	20094.882475674	Sum of GTIs [s]
livetime	19840.428974082	Livetime [s]
ontime2	20091.682525501	Sum of GTIs [s]
ontime3	20094.759355679	Sum of GTIs [s]
ontime5	20094.841435671	Sum of GTIs [s]
ontime6	20094.800395682	Sum of GTIs [s]
ontime7	20094.882475674	Sum of GTIs [s]
ontime8	20091.477345422	Sum of GTIs [s]
l2events	205207	Number of level 2 events



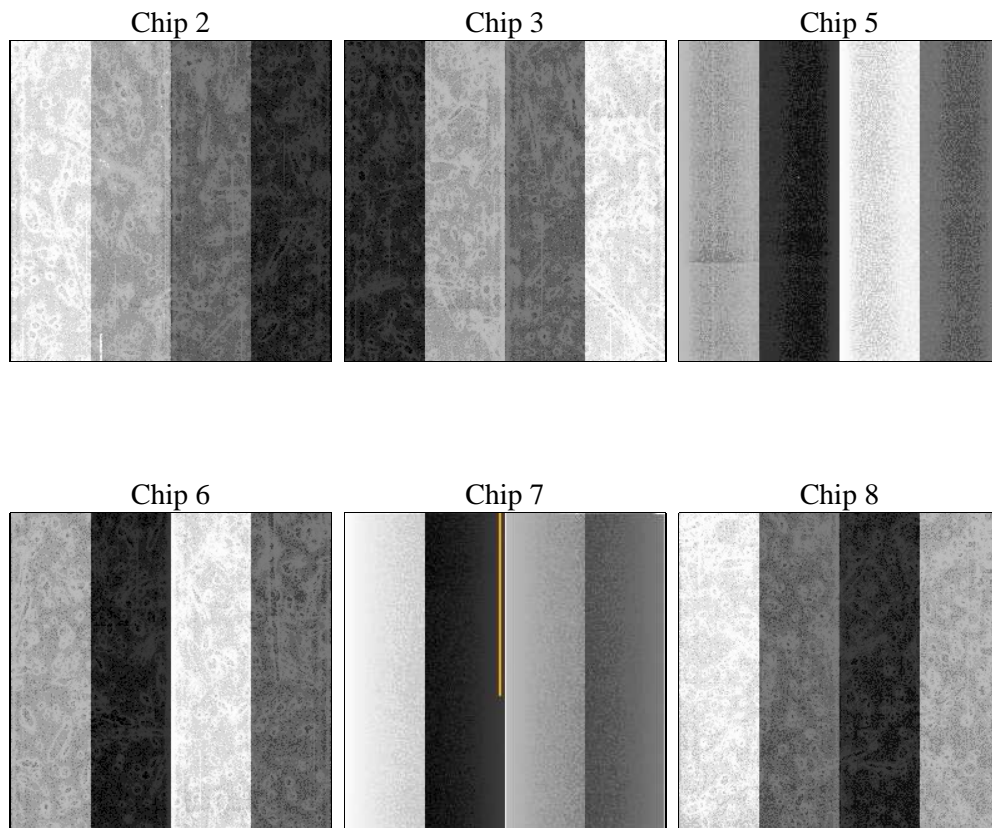
2 OBI

2.1 OBI

2.1.1 Images



2.1.2 Bias



2.1.3 Parameters

obi_num	0	Obi number	sched_exp_time	20000.000000	[s] Scheduled observation exposure time
ascdsver	8.4.5	Processing system revision	ontime	20094.882475674	Sum of GTIs [s]
caldsver	4.5.1.1	 	ontime2	20091.682525501	Sum of GTIs [s]
date	2012-09-25T04:52:43	Date and time of file creation	ontime3	20094.759355679	Sum of GTIs [s]
revision	4	Processing version of data	ontime5	20094.841435671	Sum of GTIs [s]
			ontime6	20094.800395682	Sum of GTIs [s]
			ontime7	20094.882475674	Sum of GTIs [s]
			ontime8	20091.477345422	Sum of GTIs [s]
			l1events	871260	Number of level 1 events

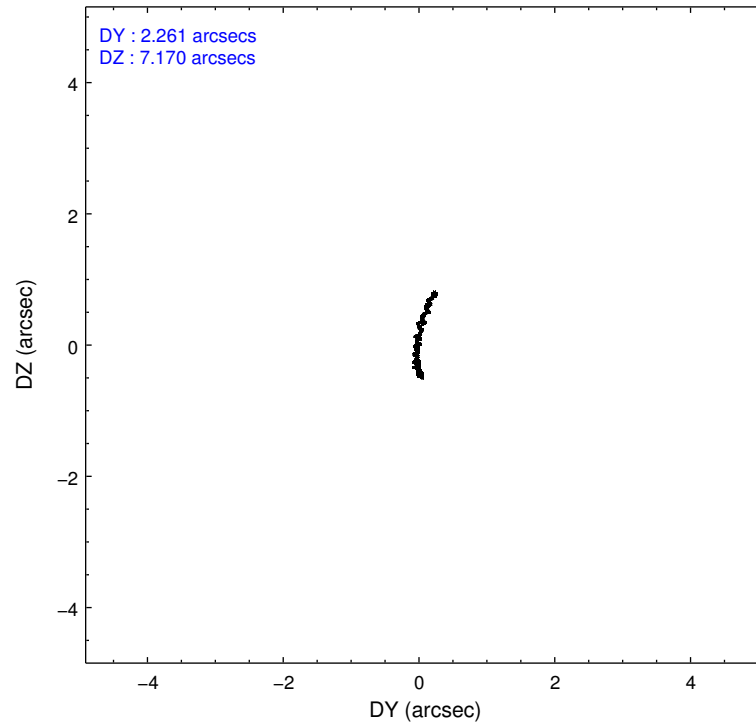
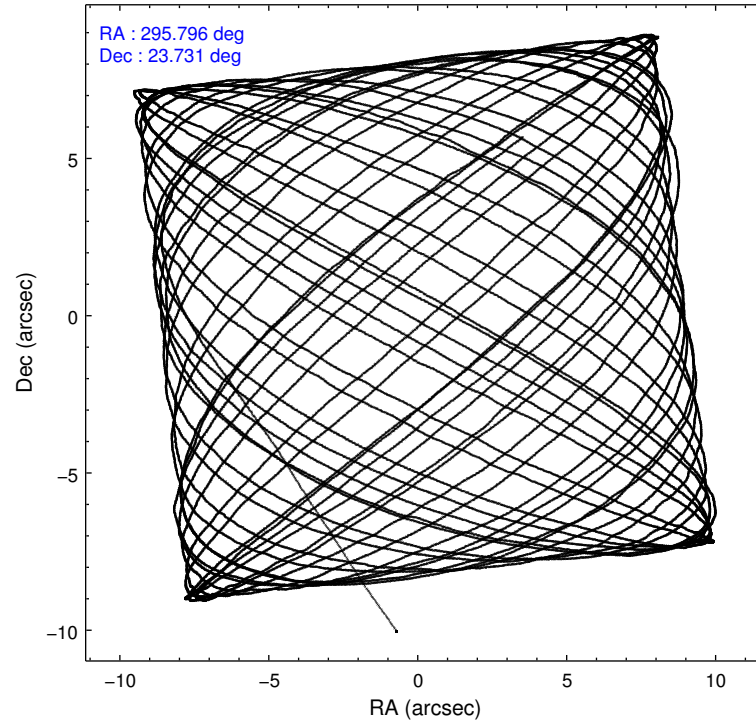
2.1.4 Events

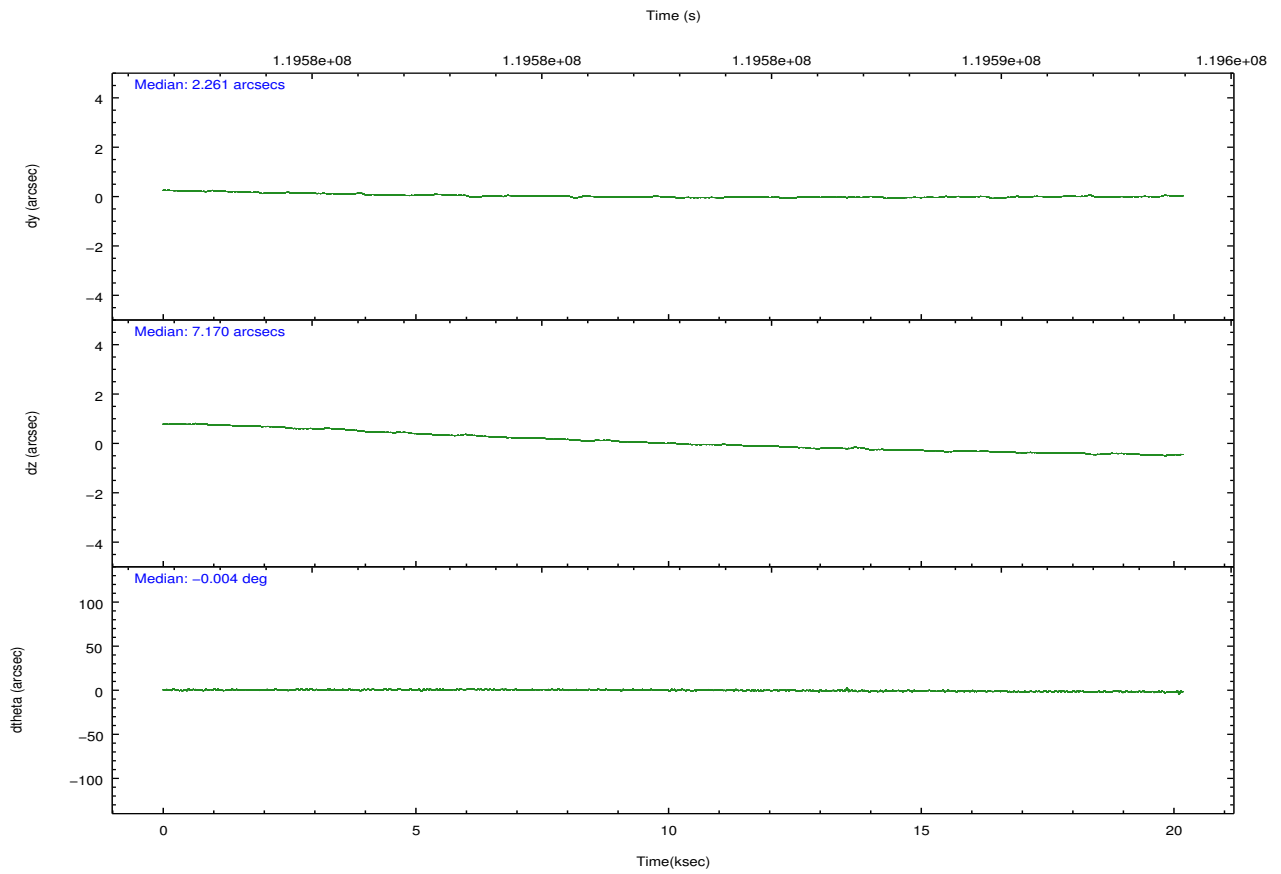
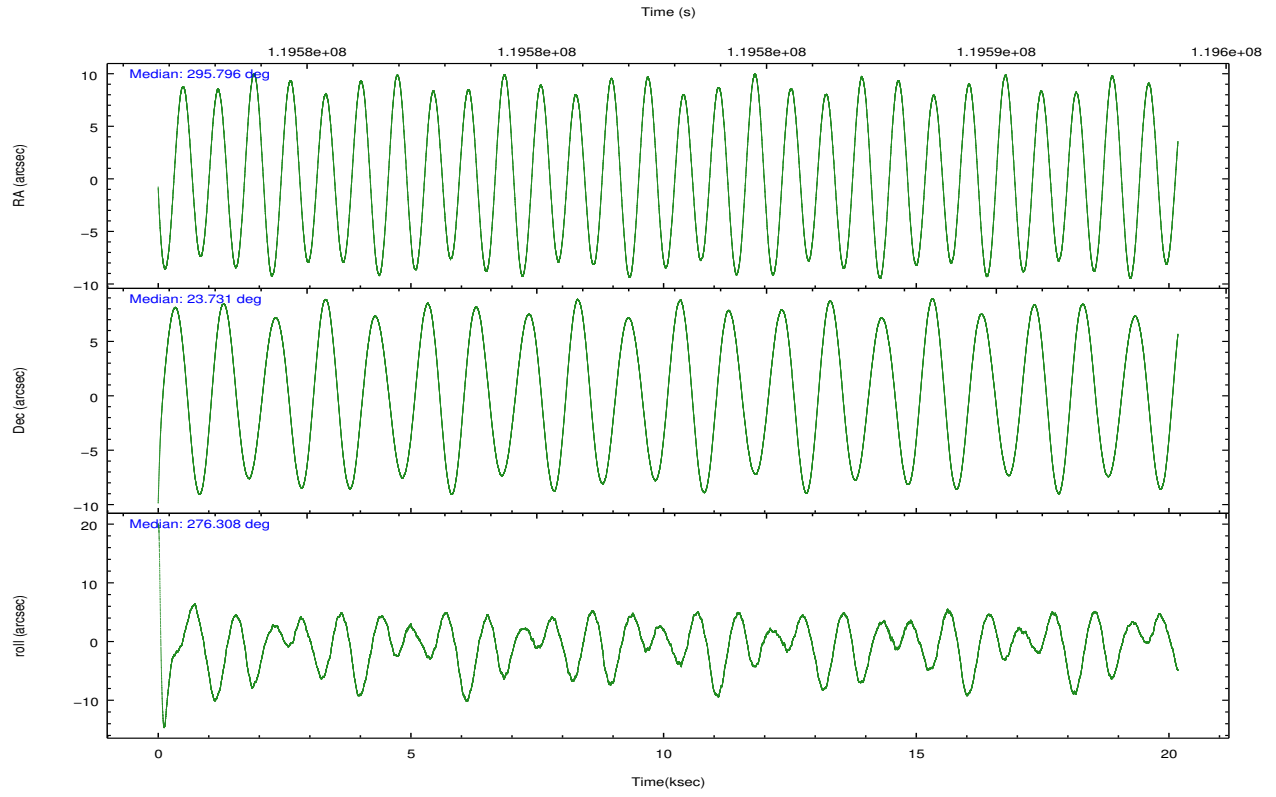
	ccd 2	ccd 3	ccd 5	ccd 6	ccd 7	ccd 8		ccd 2	ccd 3	ccd 5	ccd 6	ccd 7	ccd 8
level 1 events	121878	118887	184856	126380	165787	153472	grade 0 events	6454	6194	12839	6831	7227	10534
rejected events	107375	104800	94619	110909	92640	121254		5%	5%	6%	5%	4%	6%
rejected %	88%	88%	51%	87%	55%	79%	grade 1 events	57	49	290	46	147	100
								0%	0%	0%	0%	0%	0%
							grade 2 events	3084	2823	25963	2946	14281	6846
								2%	2%	14%	2%	8%	4%
							grade 3 events	1335	1310	4030	1410	6680	3472
								1%	1%	2%	1%	4%	2%
							grade 4 events	1246	1280	3700	1468	6609	3200
								1%	1%	2%	1%	3%	2%
							grade 5 events	4273	4487	13084	5201	14981	6375
								3%	3%	7%	4%	9%	4%
							grade 6 events	2390	2484	43745	2819	38375	8177
								1%	2%	23%	2%	23%	5%
							grade 7 events	103039	100260	81205	105659	77487	114768
								84%	84%	43%	83%	46%	74%

2.2 Compared Parameters

Parameter	Planned	Actual	Parameter	Planned	Actual
Instrument	ACIS	ACIS	Obspar format version number	7	7
Detector	ACIS-235678	ACIS-235678	Obspar file type	PREDICTED	ACTUAL
Grating	NONE	NONE	Obspar update status	NONE	UPDATED
Data mode	VFAINT	VFAINT	Number of optional ACIS chips dropped	0	0
Observation mode	POINTING	POINTING	On-chip summing requested	N	N
[deg] Pointing RA	295.778219	295.7961122371756	Subarray requested	NONE	NONE
[deg] Pointing Dec	23.752539	23.73075297125921	Alternating exposures requested	N	N
[deg] Pointing Roll	276.169133	276.3185882879932	[s] Primary exposure time	0.000000	3.2
[mm] SIM focus pos	-0.684267	-0.6828225247311905			
[mm] SIM defocus	0	0.001444936568705701			
[mm] SIM translation stage pos	-190.132523	-190.1425803651734			
[mm] SIM translation stage offset	0	0.01005778216563158			
[s] Observation start time (MET)	119572946.184000	119571909.6834			
Observation start date	2001-10-15T22:41:22	2001-10-15T22:25:09			
[s] Observation end time (MET)	119592946.184000	119593553.58426			
Observation end date	2001-10-16T04:14:42	2001-10-16T04:25:53			
Read mode	TIMED	TIMED			

2.3 Aspect



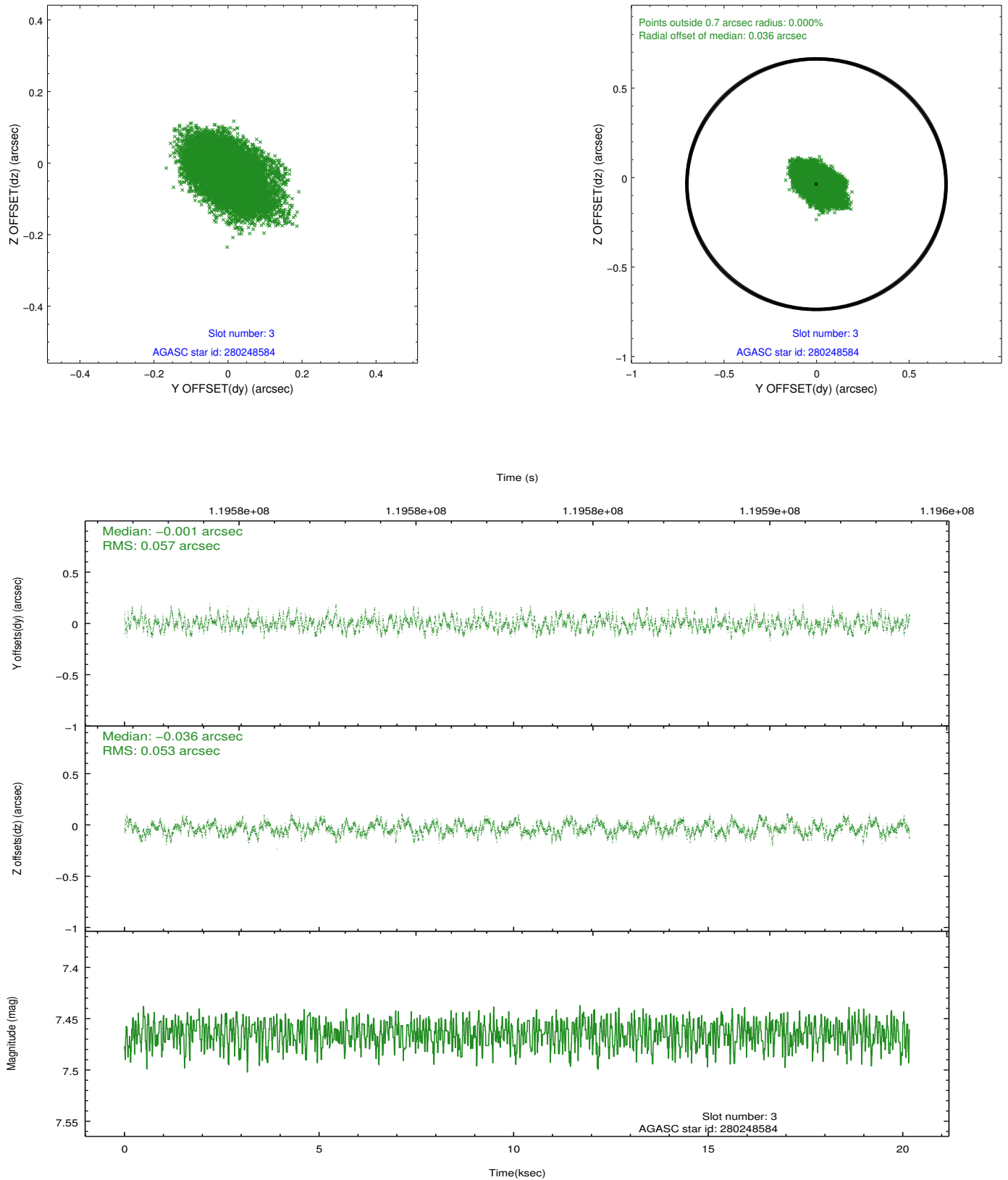


Slot Statistics

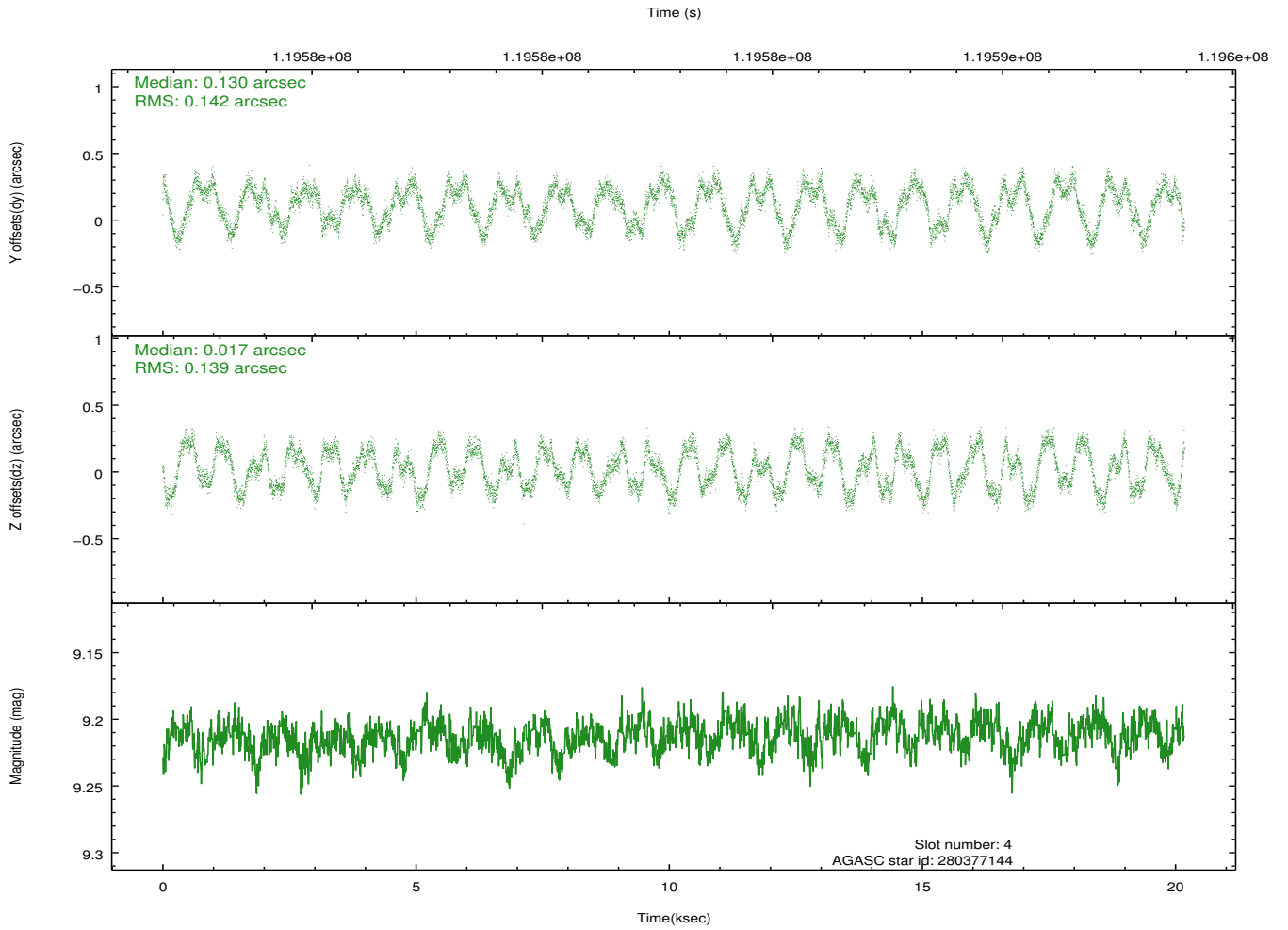
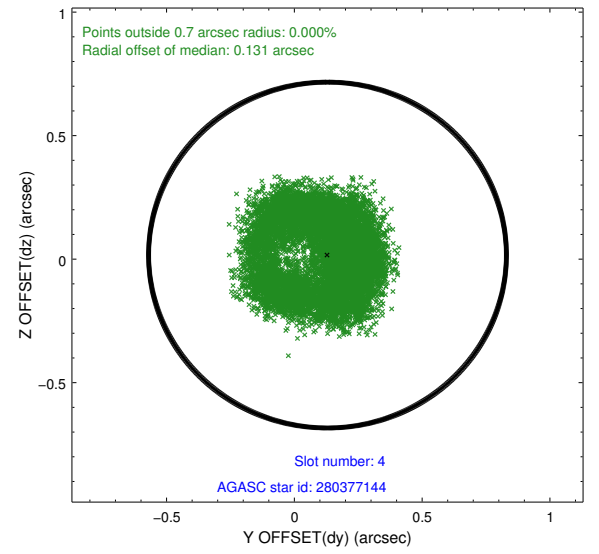
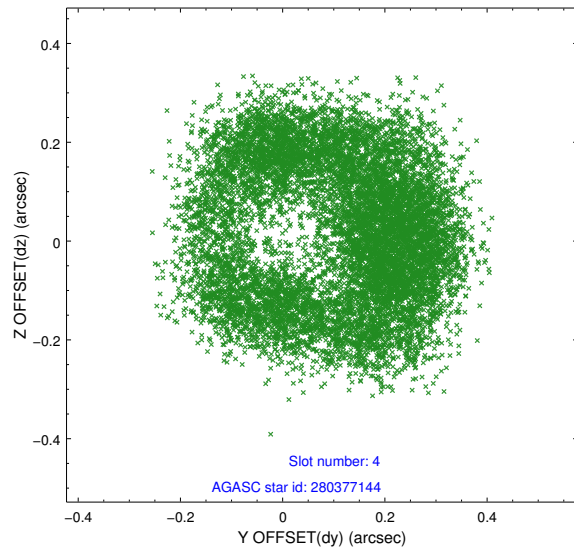
slot	status	id	mag	n_pts	med_dy	med_dz	dr1	dr2	ra	dec	mean_y	mean_z
0	FID	ACIS-S-1	7.19	4920	0.028	-0.061	0.012	0.027	0.000000	0.000000	941.11	-1724.06
1	FID	ACIS-S-5	7.24	4922	0.002	0.031	0.011	0.016	0.000000	0.000000	-1807.76	173.45
2	FID	ACIS-S-6	7.36	4922	-0.051	0.044	0.018	0.041	0.000000	0.000000	406.45	817.58
3	GUIDE	280248584	7.46	9843	-0.001	-0.036	0.083	0.136	295.098999	23.480132	729.87	-2333.96
4	GUIDE	280377144	9.21	9840	0.130	0.017	0.222	0.305	295.998716	23.345278	1536.27	567.59
5	GUIDE	280369728	8.69	9843	0.148	0.071	0.086	0.138	295.706771	23.463304	1010.94	-345.70
6	GUIDE	280366352	8.66	9841	-0.122	0.041	0.086	0.133	296.302642	24.051134	-886.25	1830.20
7	GUIDE	280244224	7.33	9844	-0.140	-0.092	0.071	0.109	295.048583	23.884977	-737.31	-2335.53

2.4 Star Slots

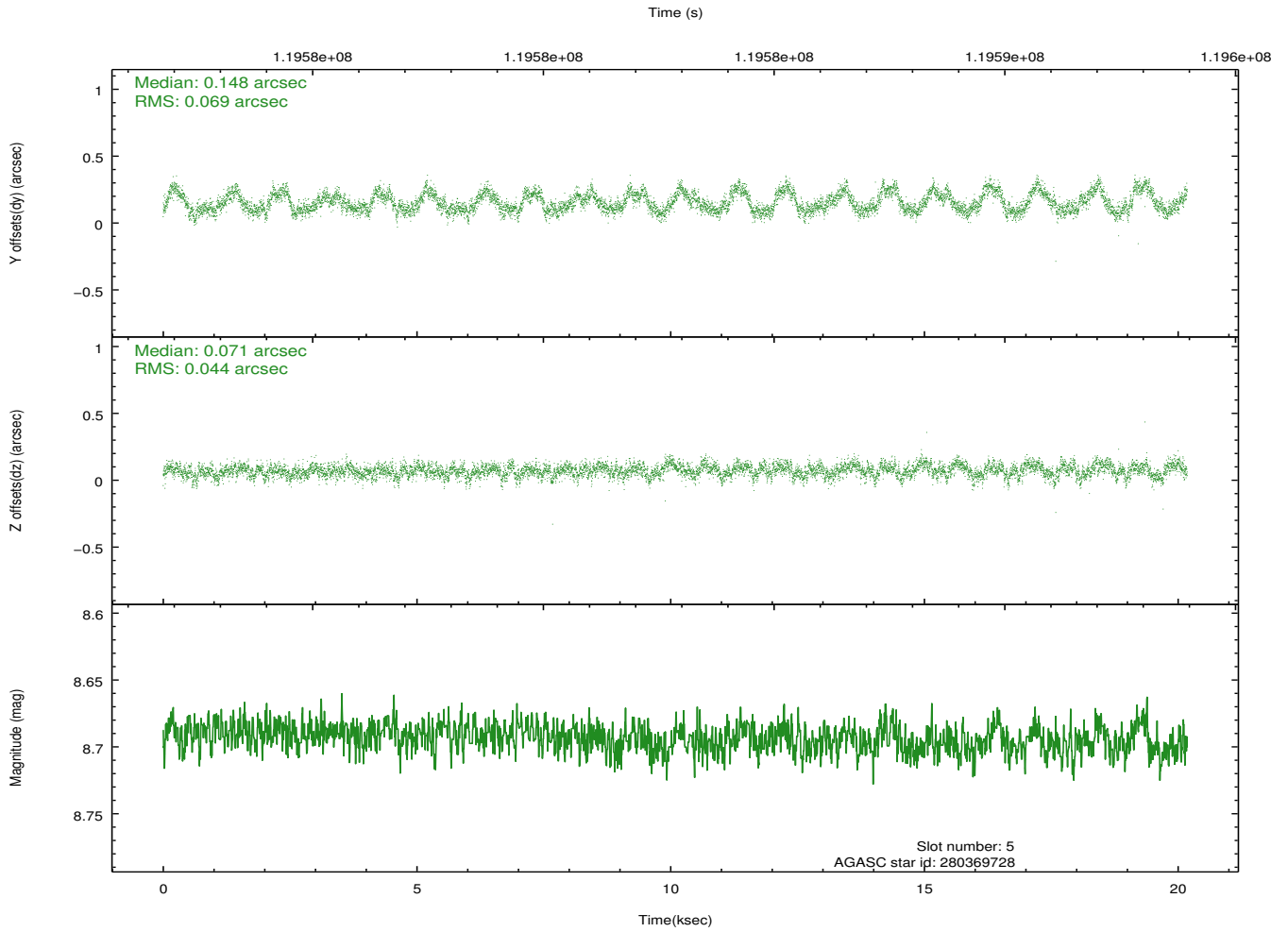
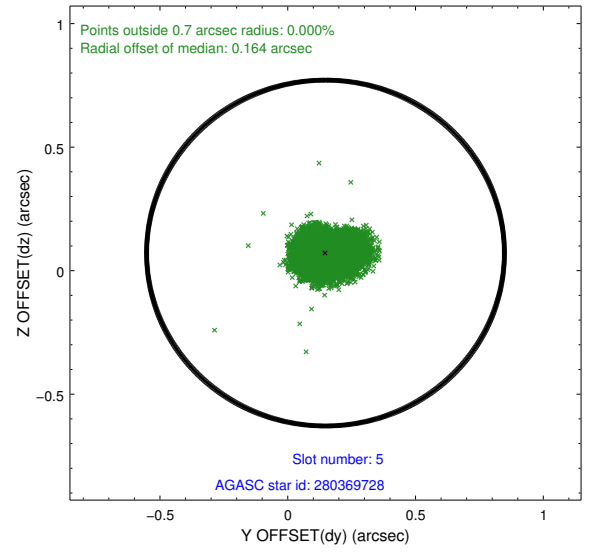
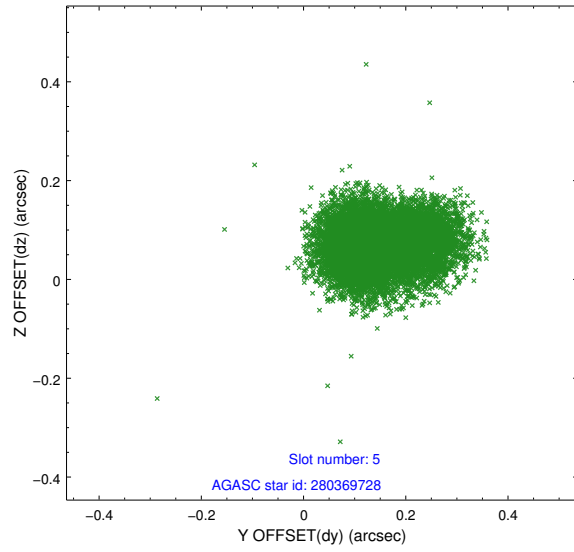
2.4.1 Slot 3



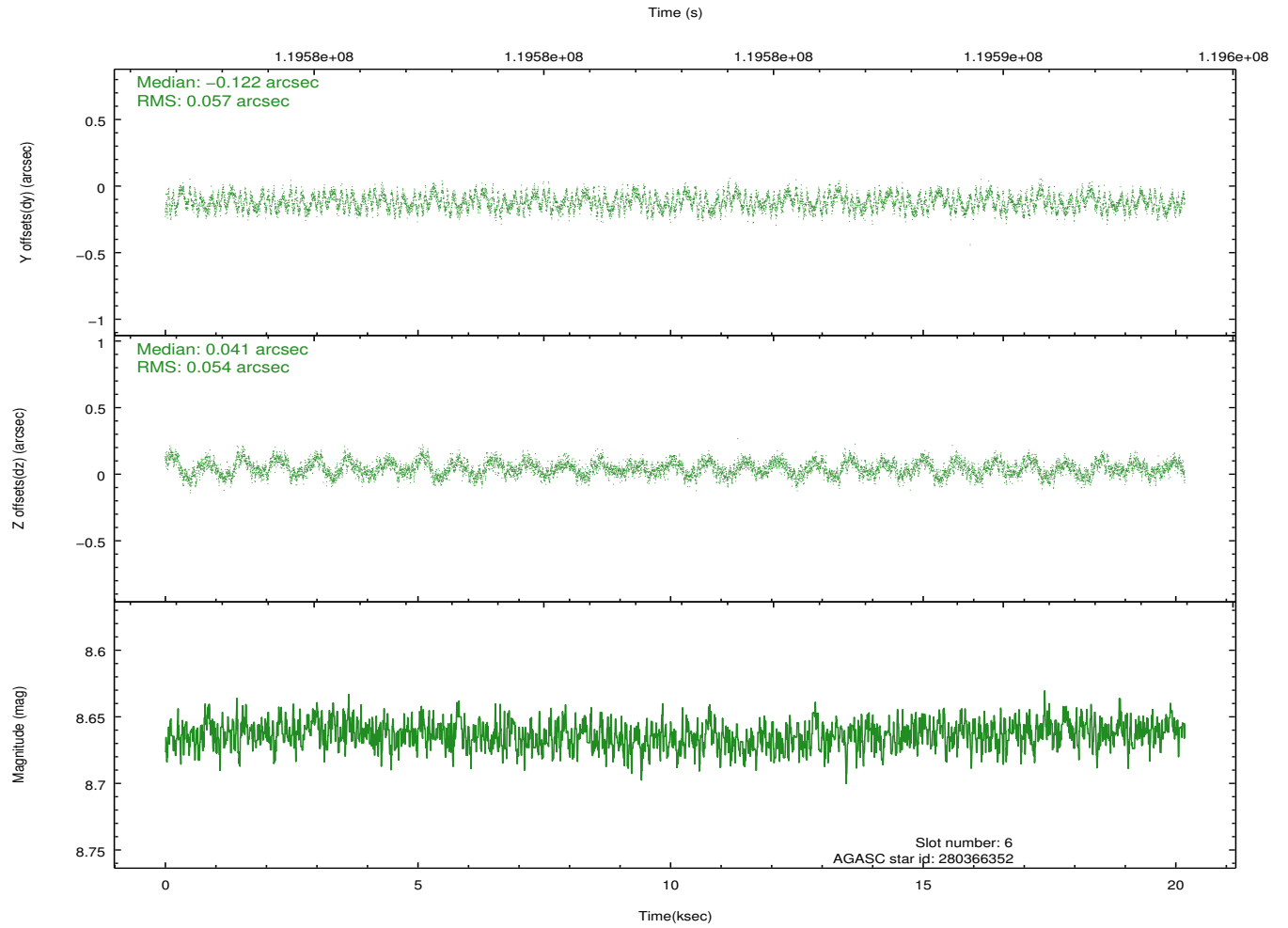
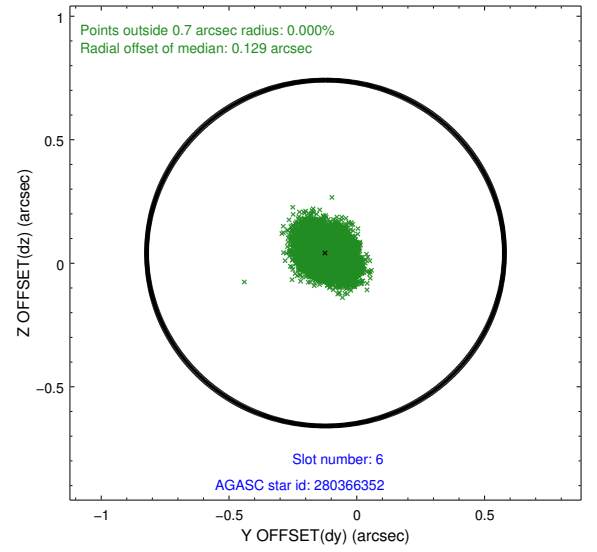
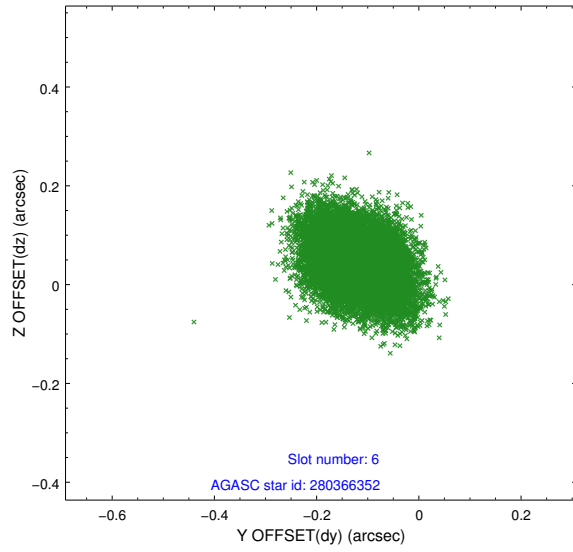
2.4.2 Slot 4



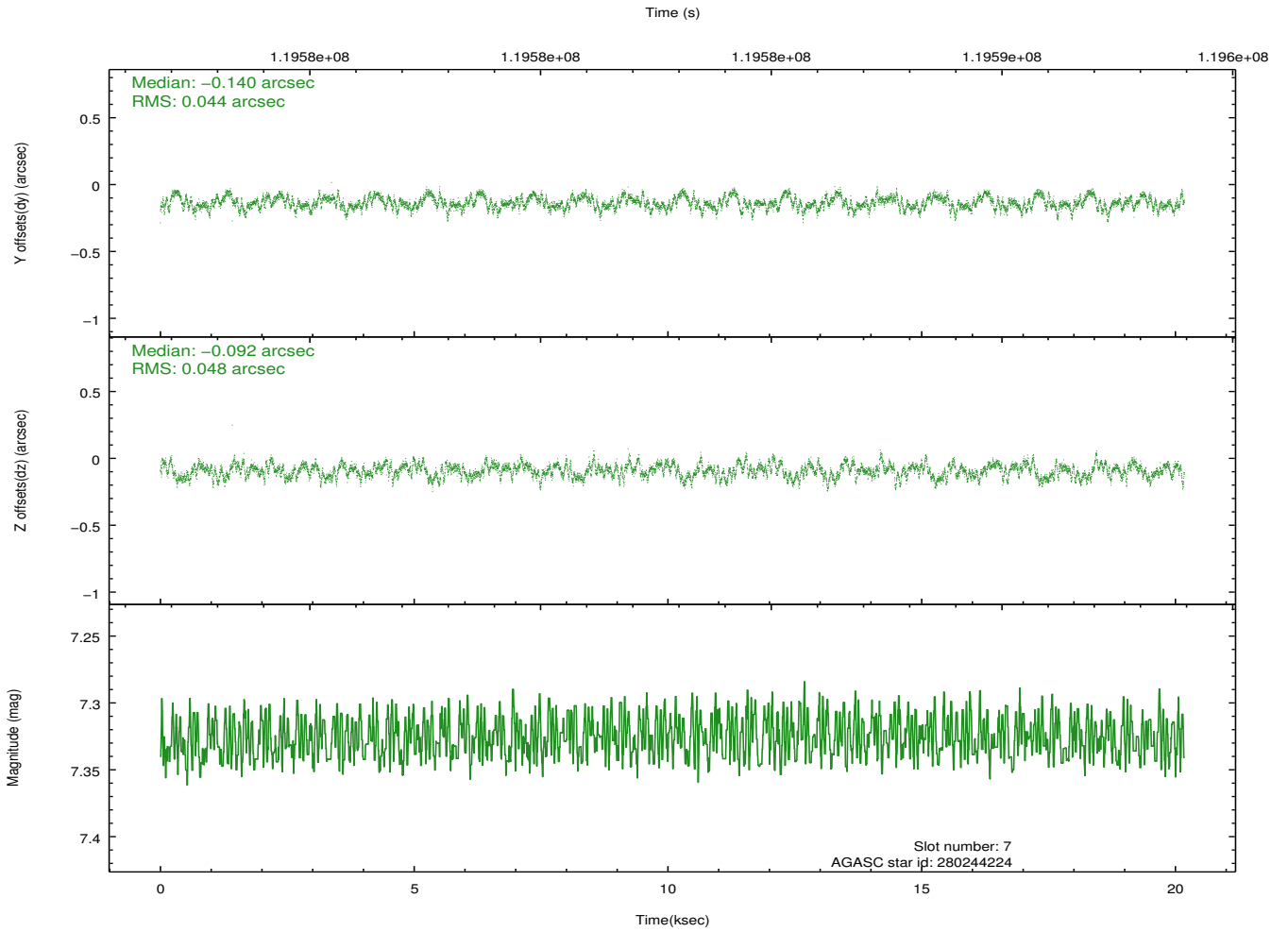
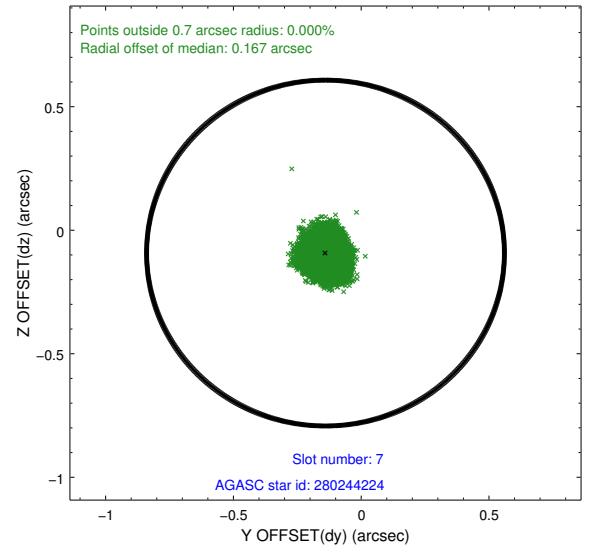
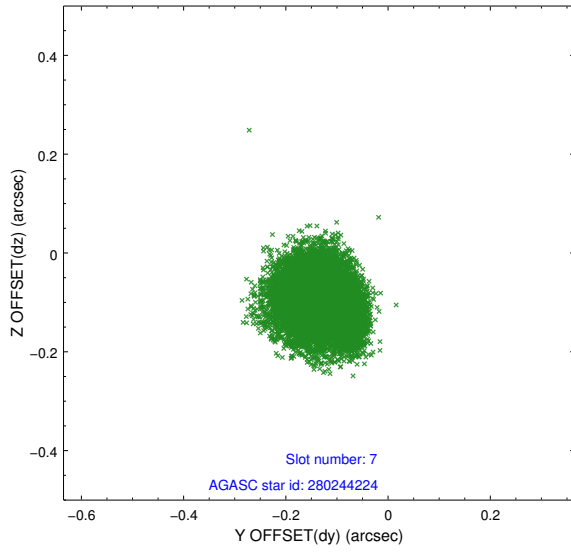
2.4.3 Slot 5



2.4.4 Slot 6

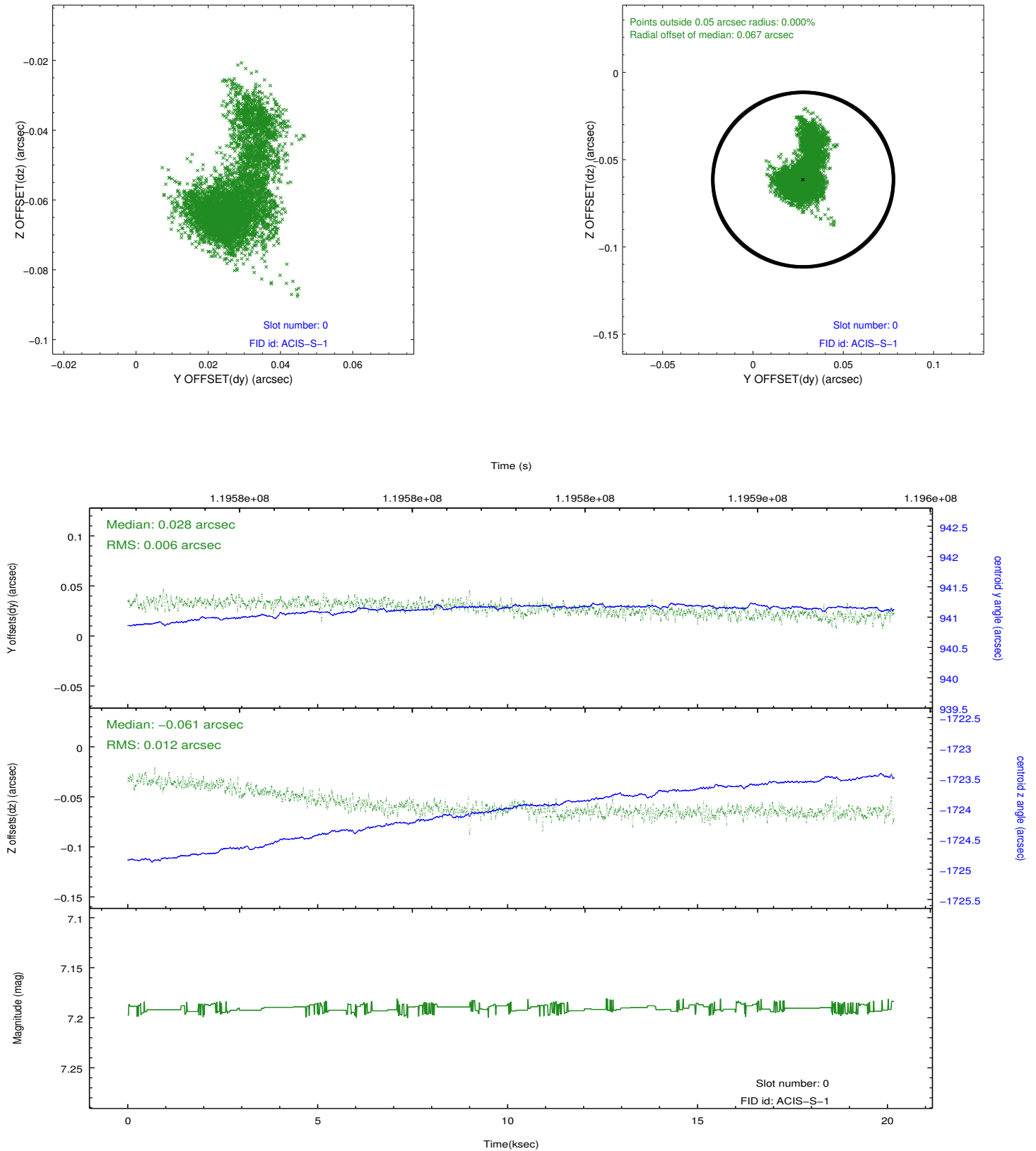


2.4.5 Slot 7

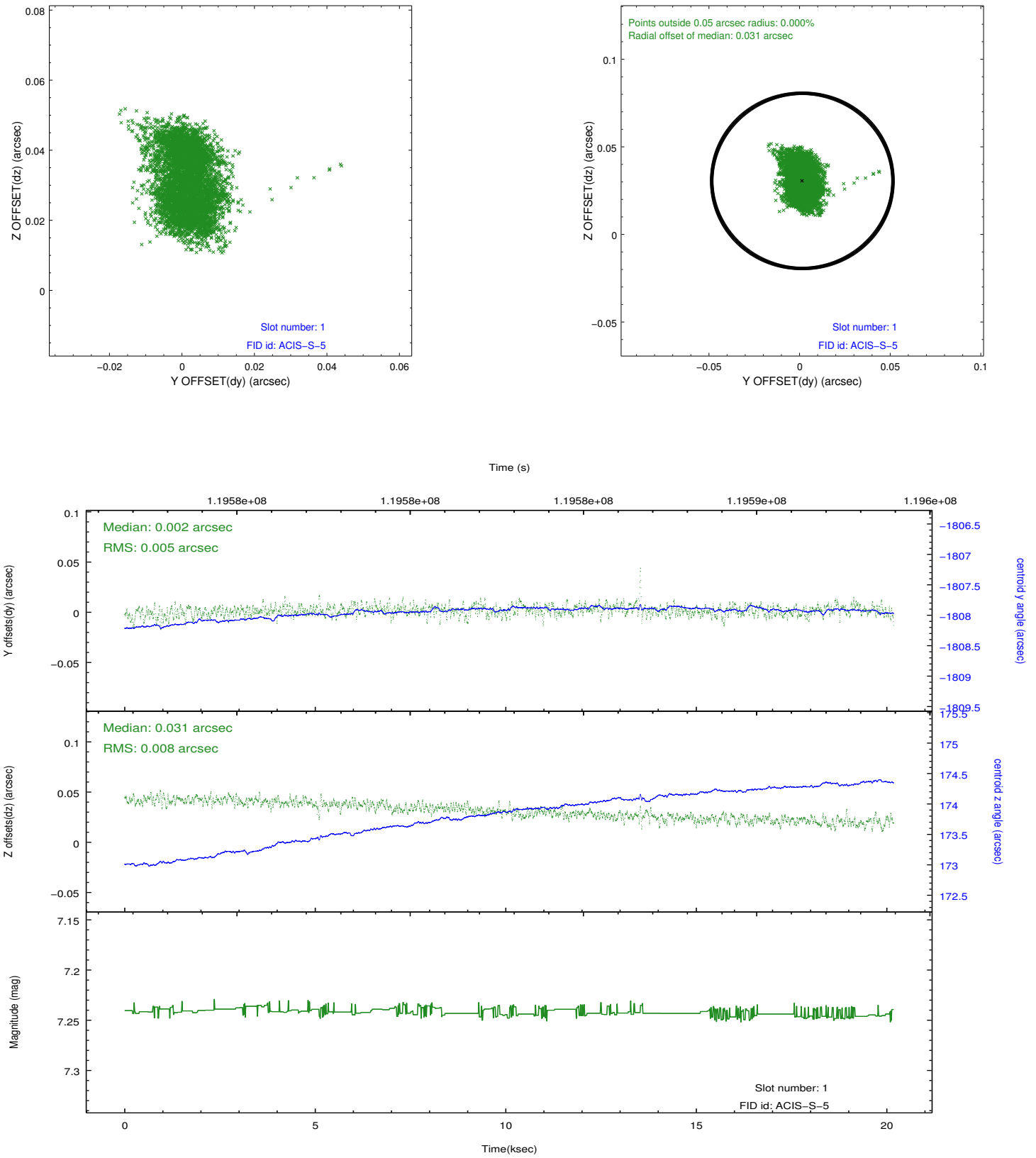


2.5 FID Slots

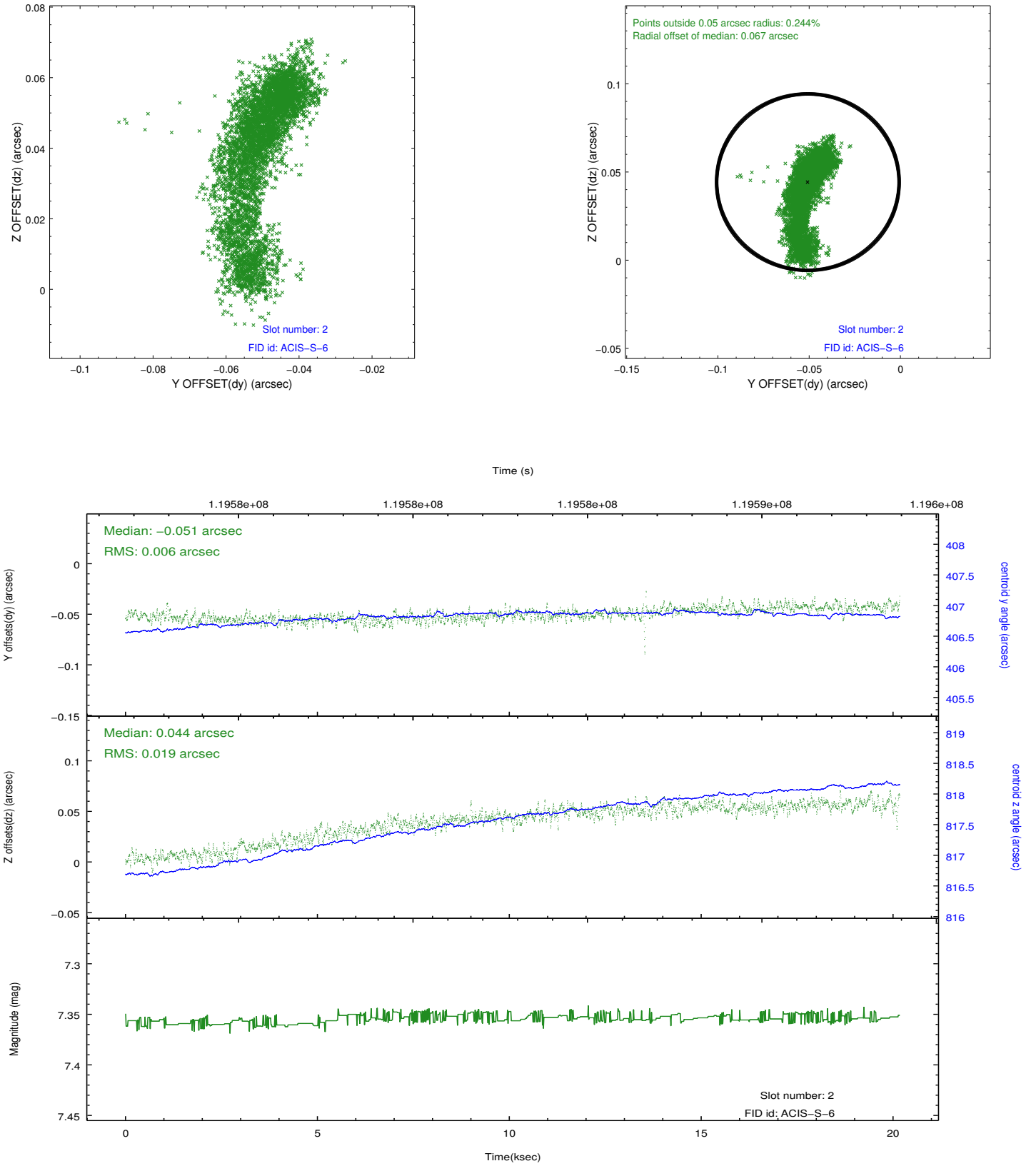
2.5.1 Slot 0



2.5.2 Slot 1



2.5.3 Slot 2



A Summary

A.1 Status

V&V Scientist	Jen Lauer
V&V Date (YYYY-MM-DD)	2012.09.27
V&V Edition	1
V&V Disposition and Status	OK
V&V Charge Time	20.096

A.2 Comments