

V&V Reference Report

L2 ASCDS Version : 7.6.10

Observation 1868 - L2 Version 001
Chandra X-Ray Center

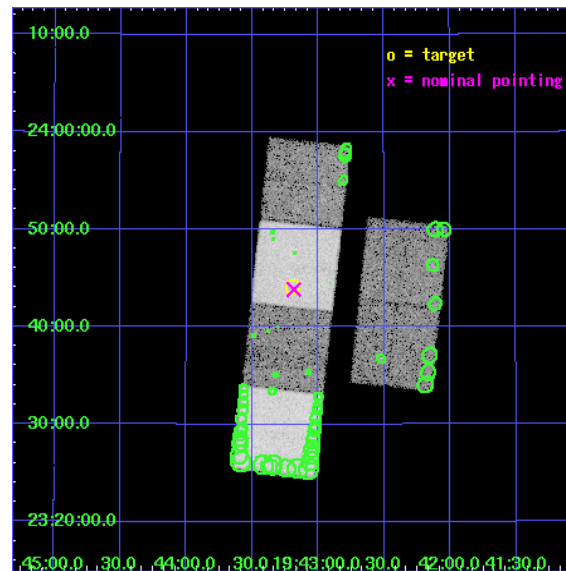
L2 Processing Date : Jan 10 2007

Contents

1	Front	2
2	OBI	3
2.1	OBI	3
2.1.1	Images	3
2.1.2	Bias	3
2.1.3	Parameters	4
2.1.4	Events	4
2.2	Compared Parameters	5
2.3	Aspect	6
2.4	Star Slots	9
2.4.1	Slot 3	9
2.4.2	Slot 4	10
2.4.3	Slot 5	11
2.4.4	Slot 6	12
2.4.5	Slot 7	13
2.5	FID Slots	14
2.5.1	Slot 0	14
2.5.2	Slot 1	15
2.5.3	Slot 2	16
3	Point Sources	17
A	Summary	18
A.1	Status	18
A.2	Comments	18

1 Front

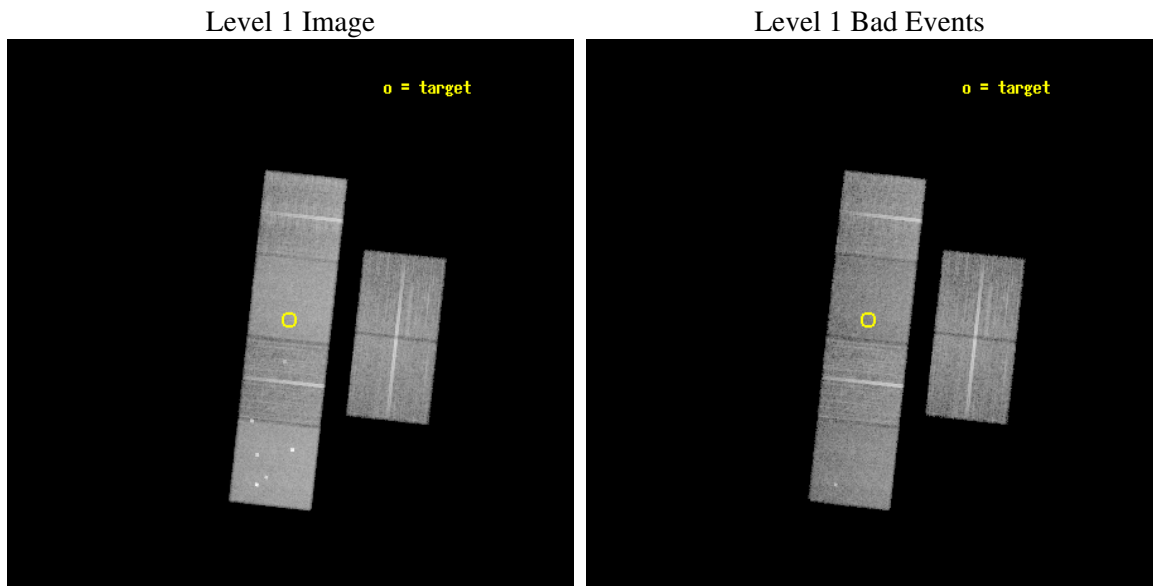
seq_num	200096
obs_id	1868
title	HIGH ENERGY PROCESSES AT THE EARLIEST STAGES OF MASSIVE STAR FORMATION
observer	Dr. Henrik Beuther
object	19410+2336
dtcycle	0
cycle	P
ra_targ	295.7975
dec_targ	23.735
ra_nom	295.79611223718
dec_nom	23.730752971259
roll_nom	276.31858828799
revision	3
ontime	20096.000018716
livetime	19841.53236612
ontime2	20092.759028539
ontime3	20096.000018716
ontime5	20096.000018716
ontime6	20096.000018716
ontime7	20096.000018716
ontime8	20092.759048462
l2events	205574



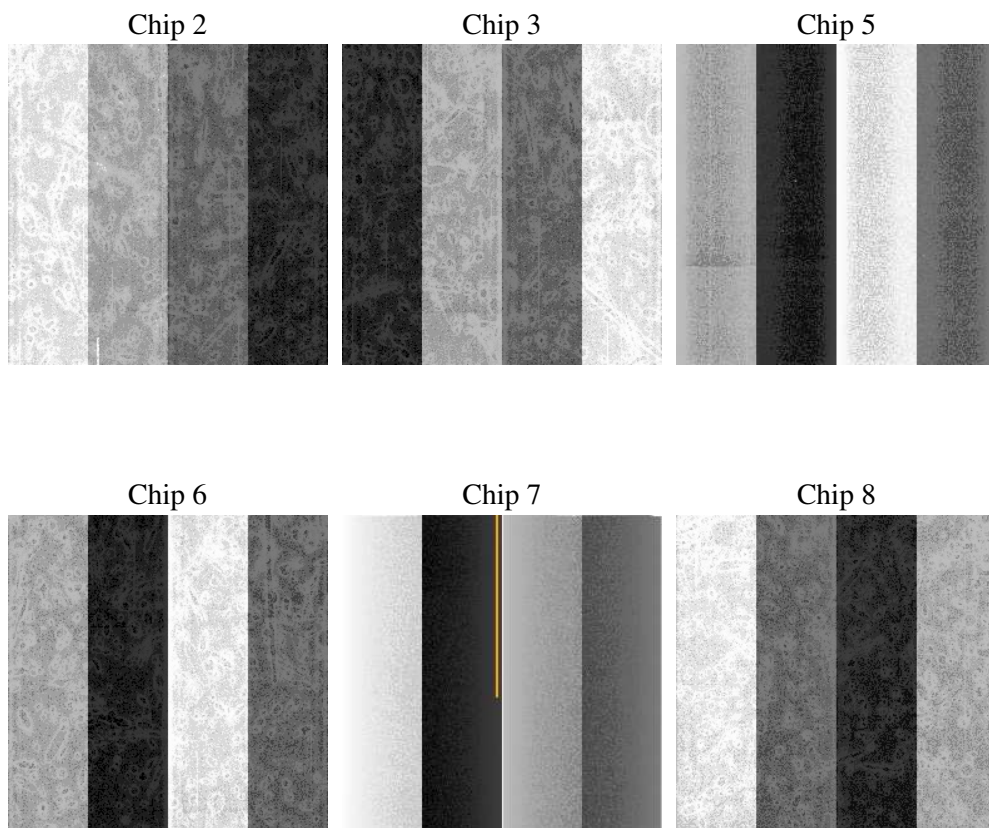
2 OBI

2.1 OBI

2.1.1 Images



2.1.2 Bias



2.1.3 Parameters

obi_num	0
ascdsver	7.6.10
caldsver	3.3.0
date	2007-01-10T13:19:57
revision	3

sched_exp_time	20000.000000
ontime	20096.000018716
ontime2	20092.759028539
ontime3	20096.000018716
ontime5	20096.000018716
ontime6	20096.000018716
ontime7	20096.000018716
ontime8	20092.759048462
l1events	871260

2.1.4 Events

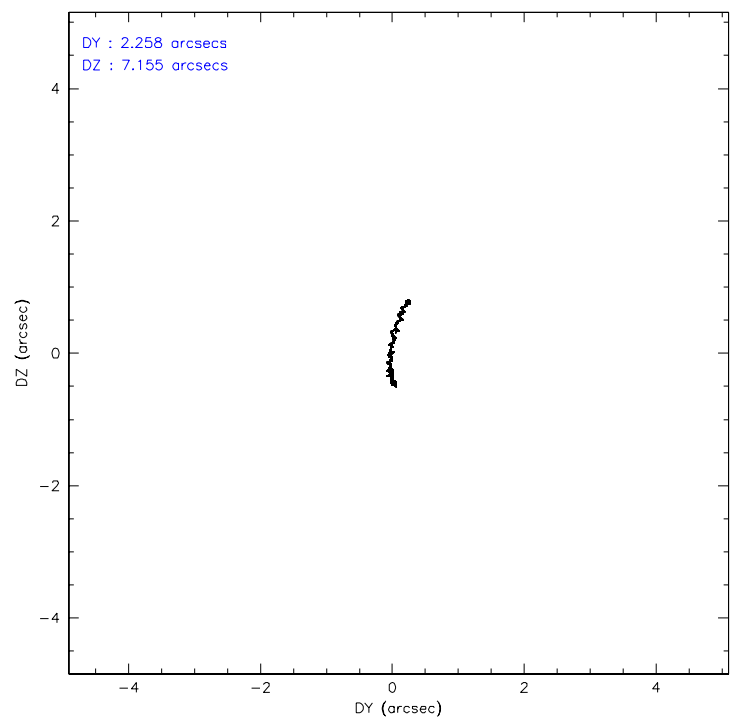
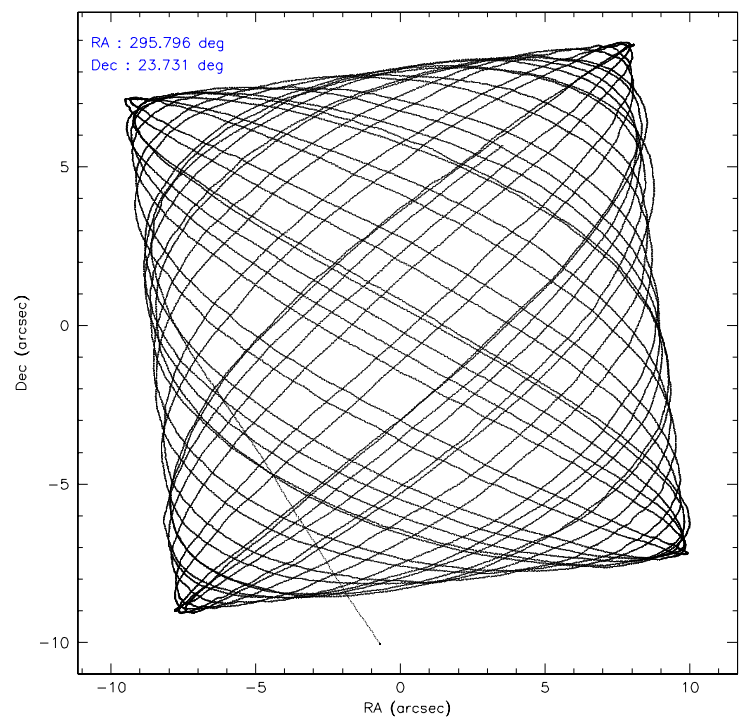
	ccd 2	ccd 3	ccd 5	ccd 6	ccd 7	ccd 8
level 1 events	121878	118887	184856	126380	165787	153472
rejected events	107372	104797	94603	110909	92624	121246
rejected %	88%	88%	51%	87%	55%	79%

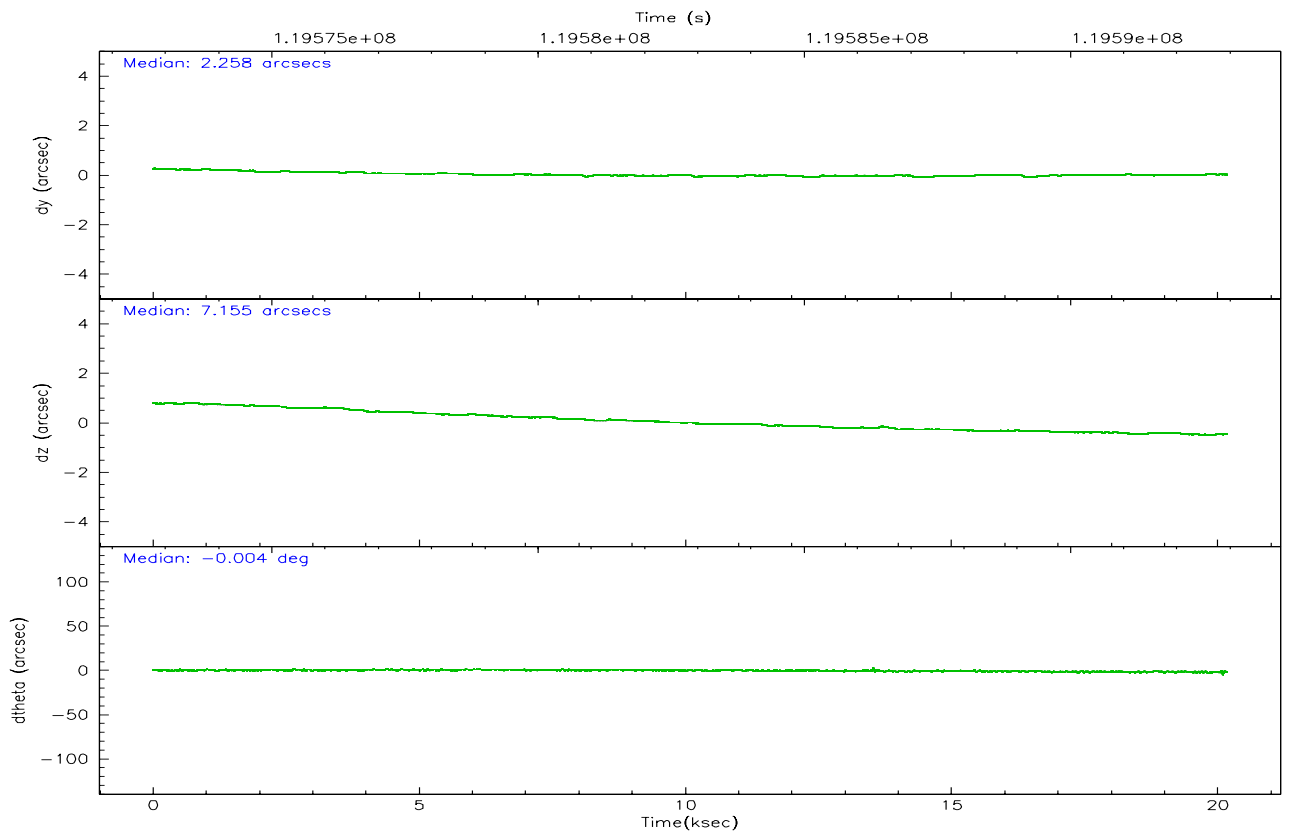
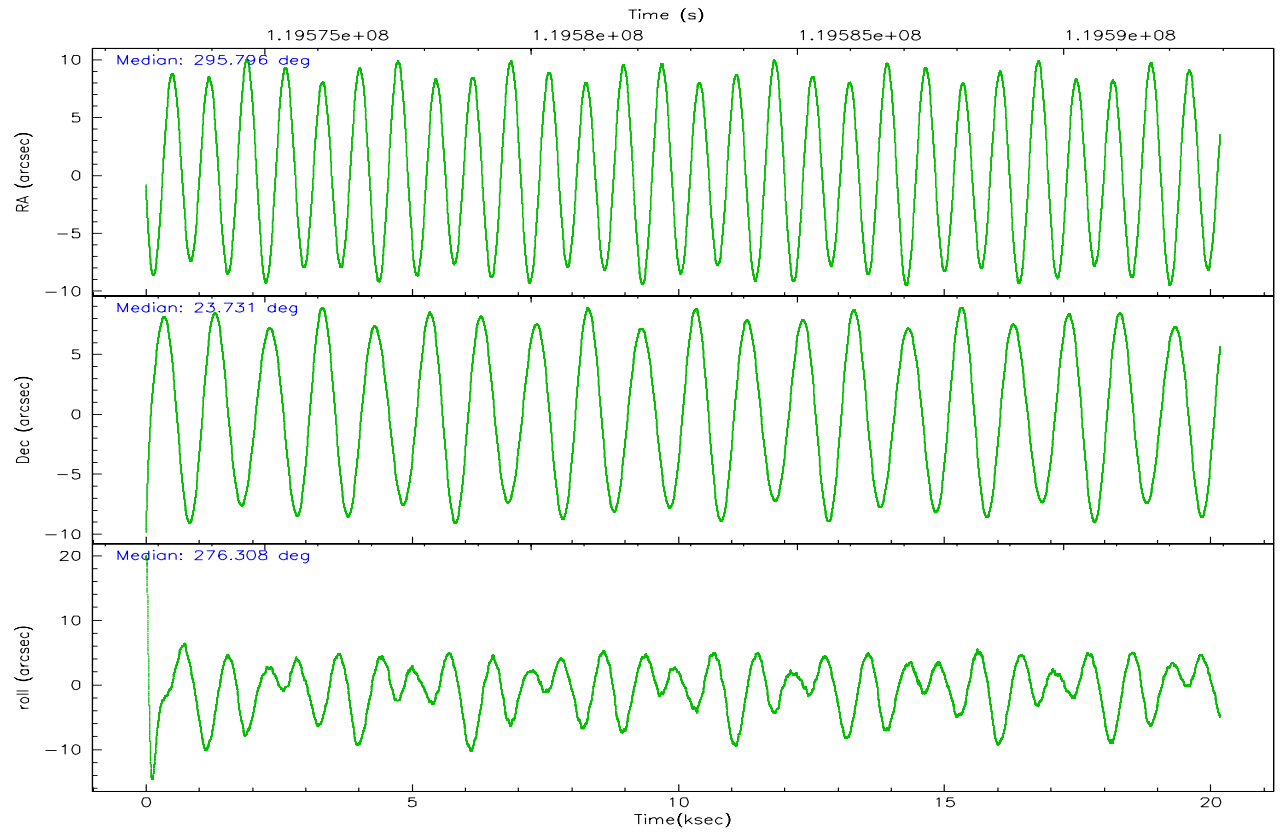
	ccd 2	ccd 3	ccd 5	ccd 6	ccd 7	ccd 8
grade 0 events	6455	6194	12834	6831	7227	10535
	5%	5%	6%	5%	4%	6%
grade 1 events	57	49	290	46	147	100
	0%	0%	0%	0%	0%	0%
grade 2 events	3083	2824	25968	2946	14282	6845
	2%	2%	14%	2%	8%	4%
grade 3 events	1336	1310	4025	1410	6678	3472
	1%	1%	2%	1%	4%	2%
grade 4 events	1246	1280	3698	1468	6606	3200
	1%	1%	2%	1%	3%	2%
grade 5 events	4273	4487	13080	5202	14979	6375
	3%	3%	7%	4%	9%	4%
grade 6 events	2389	2484	43752	2818	38381	8178
	1%	2%	23%	2%	23%	5%
grade 7 events	103039	100259	81209	105659	77487	114767
	84%	84%	43%	83%	46%	74%

2.2 Compared Parameters

Parameter	Planned	Actual	Parameter	Planned	Actual
Instrument	ACIS	ACIS	Obspar format version number	6	6
Detector	ACIS-235678	ACIS-235678	Obspar file type	PREDICTED	ACTUAL
Grating	NONE	NONE	Obspar update status	NONE	UPDATED
Data mode	VFAINT	VFAINT	Number of optional ACIS chips dropped	0	0
Observation mode	POINTING	POINTING	On-chip summing requested	N	N
Pointing RA	295.778219	295.7961122371756	Subarray requested	NONE	NONE
Pointing Dec	23.752539	23.73075297125924	Alternating exposures requested	N	N
Pointing Roll	276.169133	276.3185882879932	Primary exposure time	0.000000	3.2
SIM focus pos (mm)	-0.684267	-0.6828225247311905			
SIM defocus (mm)	0	0.001444936568705701			
SIM translation stage pos (mm)	-190.132523	-190.1425803651734			
SIM translation stage offset (mm)	0	0.01005778216563158			
Observation start time	119572946.184000	119571909.6834			
Observation start date	2001-10-15T22:41:22	2001-10-15T22:25:09			
Observation end time	119592946.184000	119593553.58426			
Observation end date	2001-10-16T04:14:42	2001-10-16T04:25:53			
Read mode	TIMED	TIMED			

2.3 Aspect



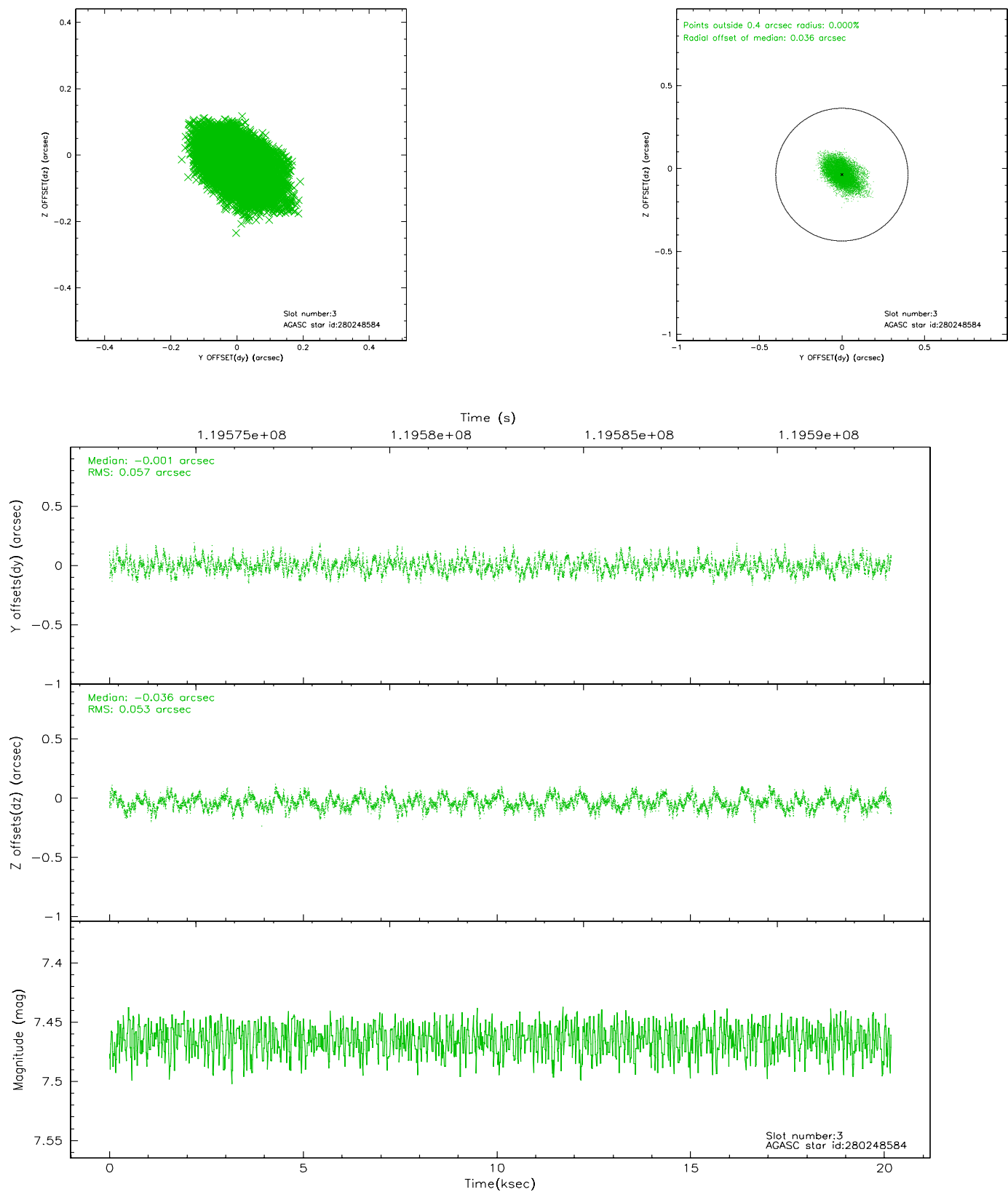


Slot Statistics

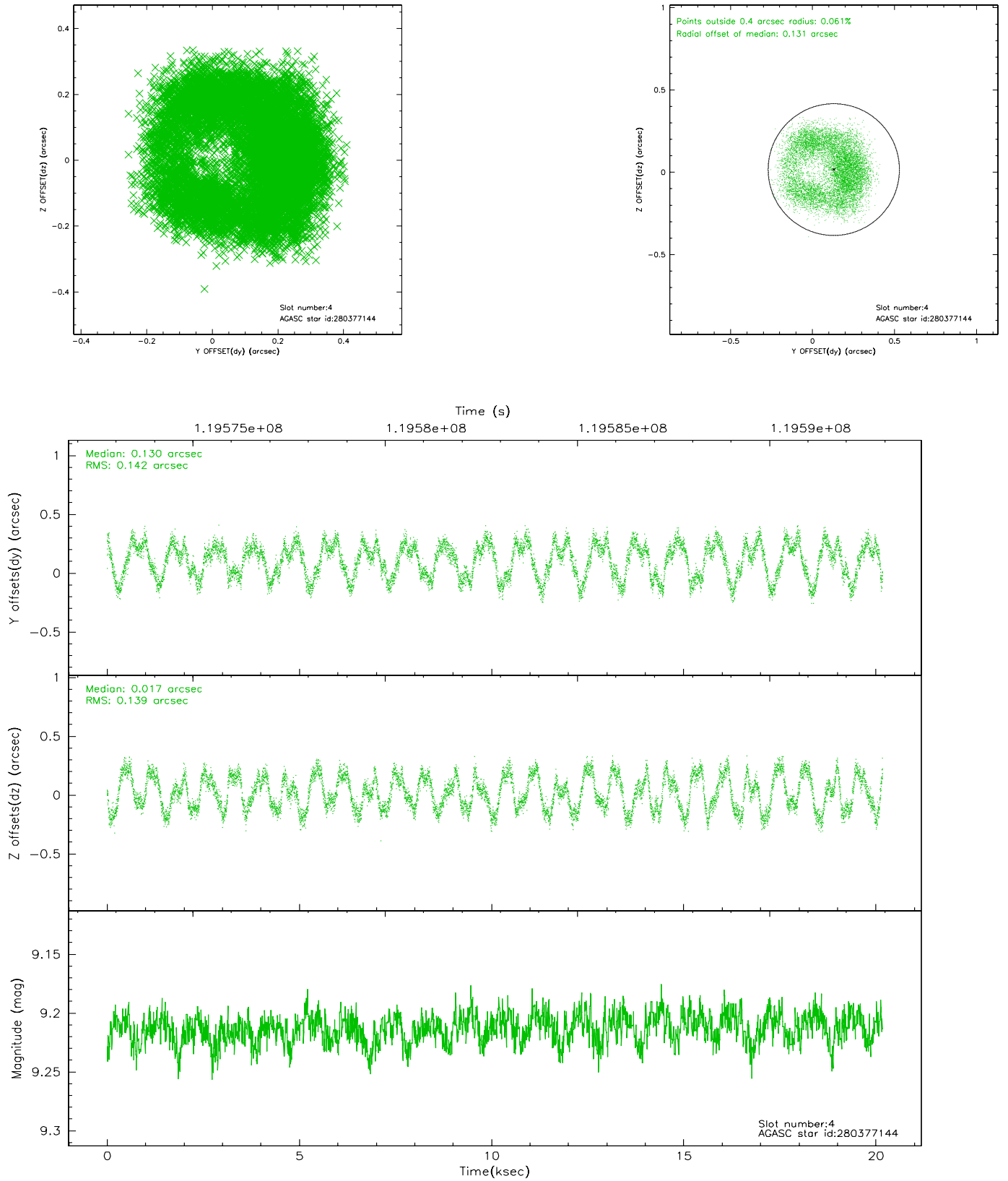
slot	status	id	mag	n_pts	med_dy	med_dz	dr1	dr2	ra	dec	mean_y	mean_z
0	FID	ACIS-S-1	7.19	4920	0.007	-0.034	0.012	0.027	0.000000	0.000000	941.10	-1724.02
1	FID	ACIS-S-5	7.24	4922	0.032	0.023	0.011	0.016	0.000000	0.000000	-1807.73	173.45
2	FID	ACIS-S-6	7.36	4922	-0.061	0.024	0.018	0.040	0.000000	0.000000	406.44	817.57
3	GUIDE	280248584	7.46	9843	-0.001	-0.036	0.083	0.136	295.098999	23.480132	729.87	-2333.96
4	GUIDE	280377144	9.21	9840	0.130	0.017	0.222	0.305	295.998716	23.345278	1536.27	567.59
5	GUIDE	280369728	8.69	9843	0.148	0.071	0.086	0.138	295.706771	23.463304	1010.94	-345.70
6	GUIDE	280366352	8.66	9841	-0.122	0.041	0.086	0.133	296.302642	24.051134	-886.25	1830.20
7	GUIDE	280244224	7.33	9844	-0.140	-0.092	0.071	0.109	295.048583	23.884977	-737.31	-2335.53

2.4 Star Slots

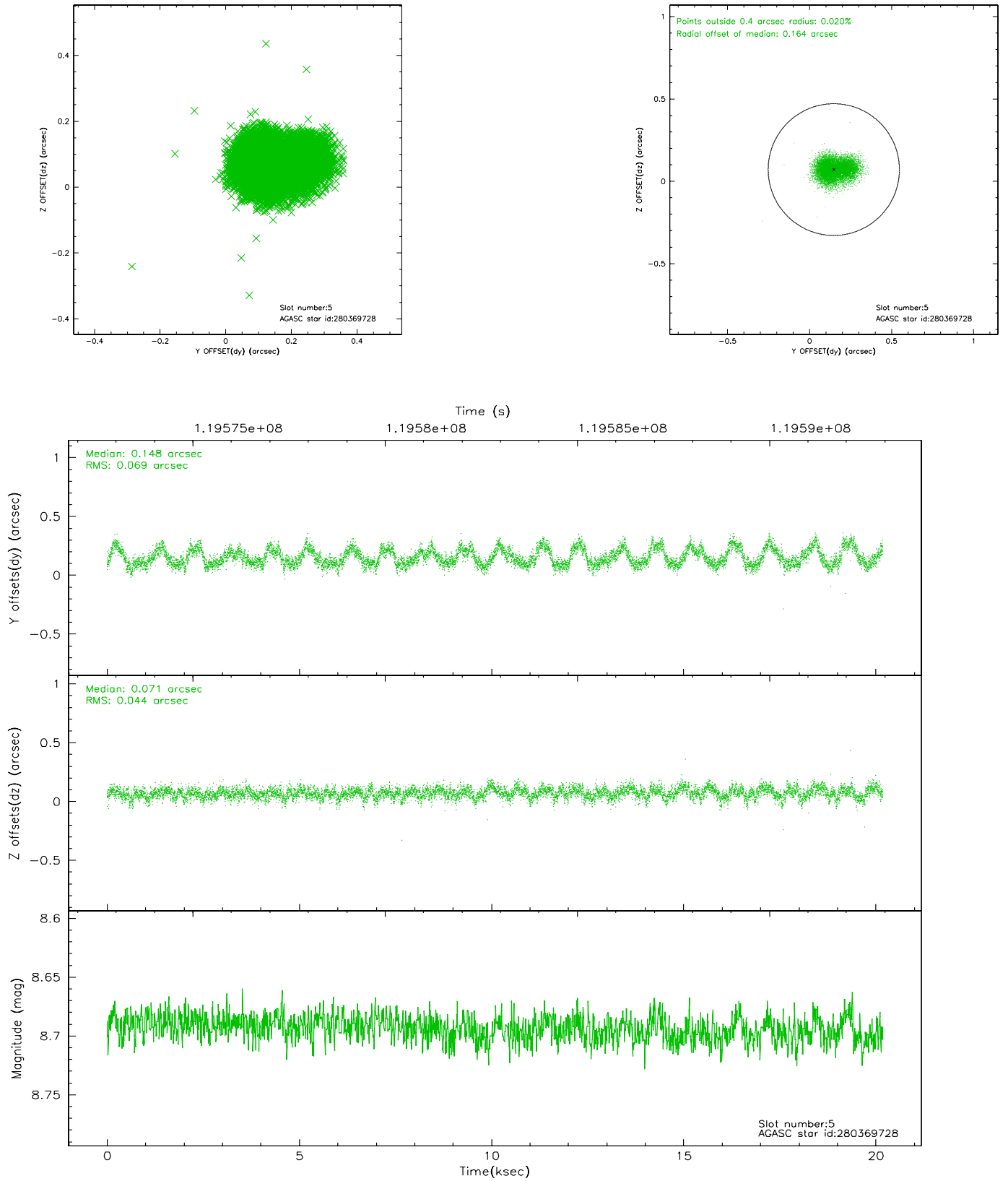
2.4.1 Slot 3



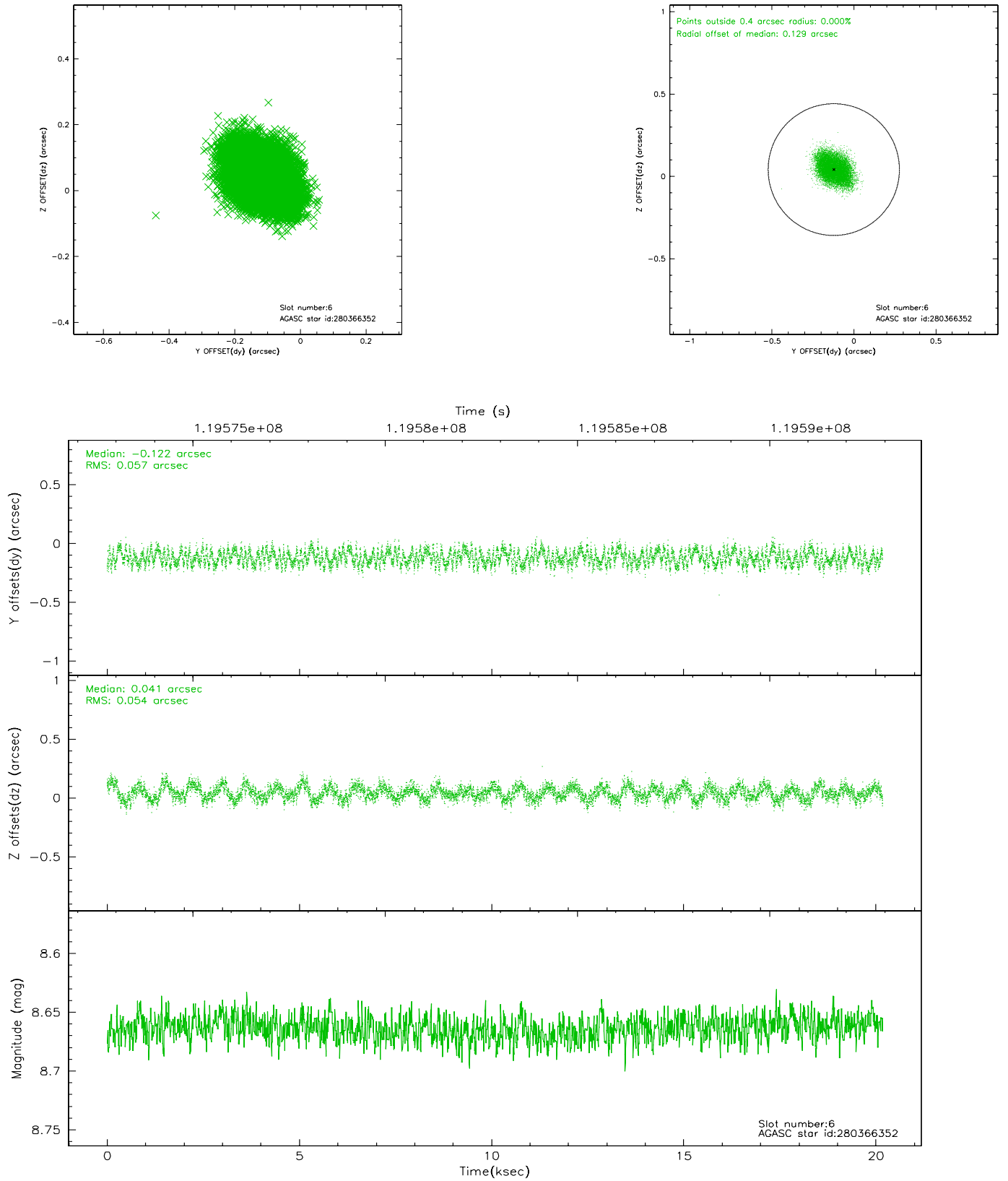
2.4.2 Slot 4



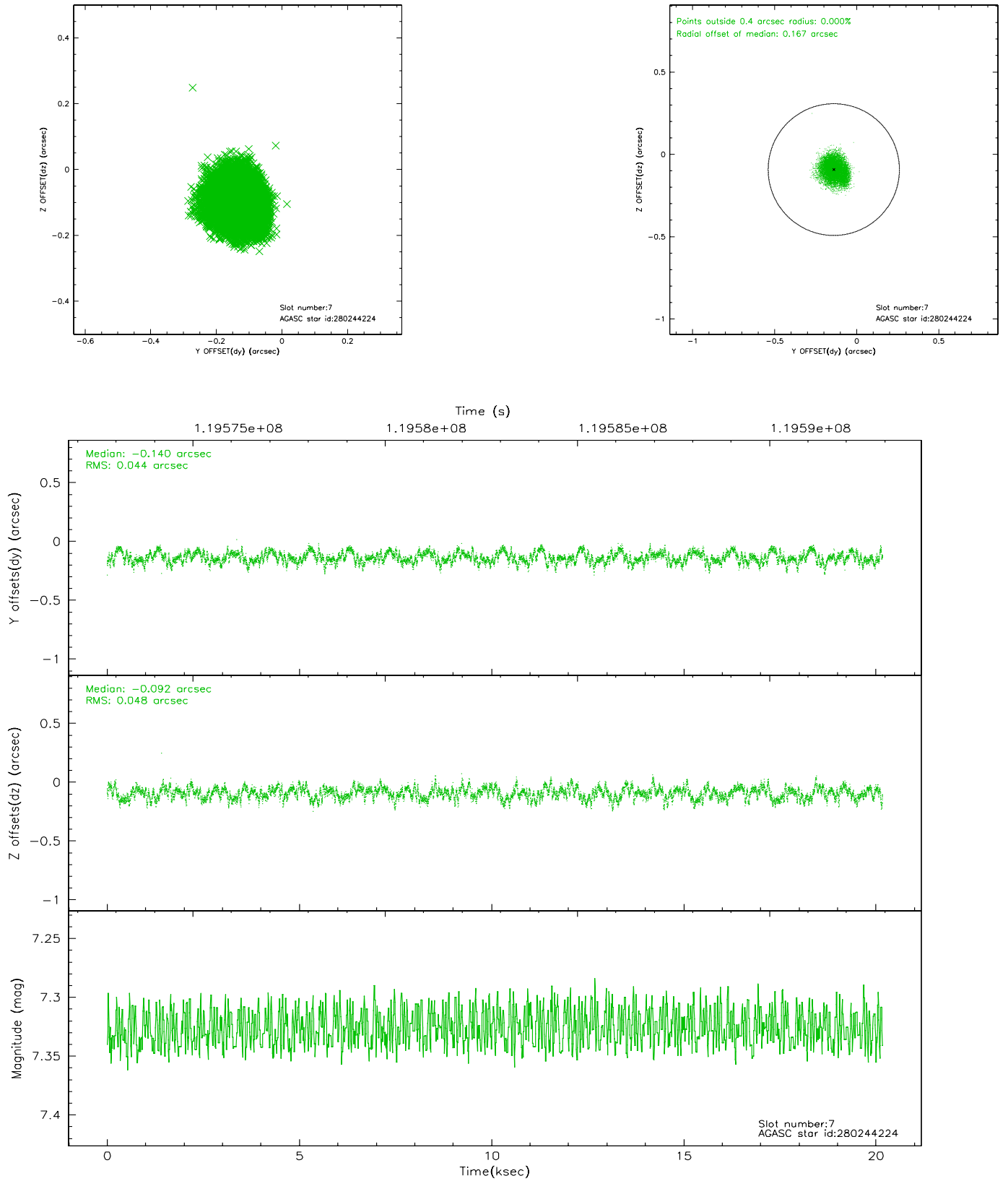
2.4.3 Slot 5



2.4.4 Slot 6

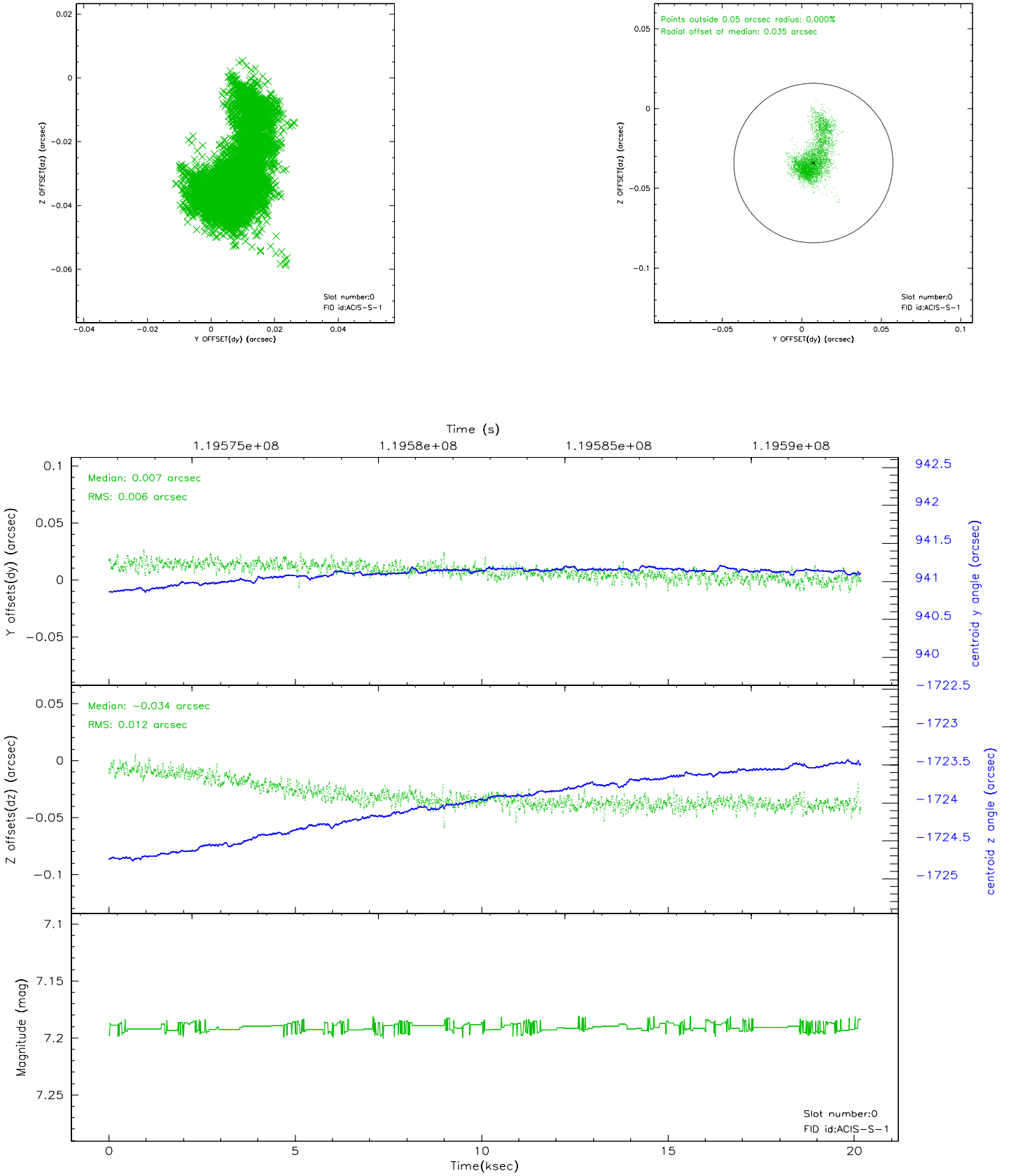


2.4.5 Slot 7

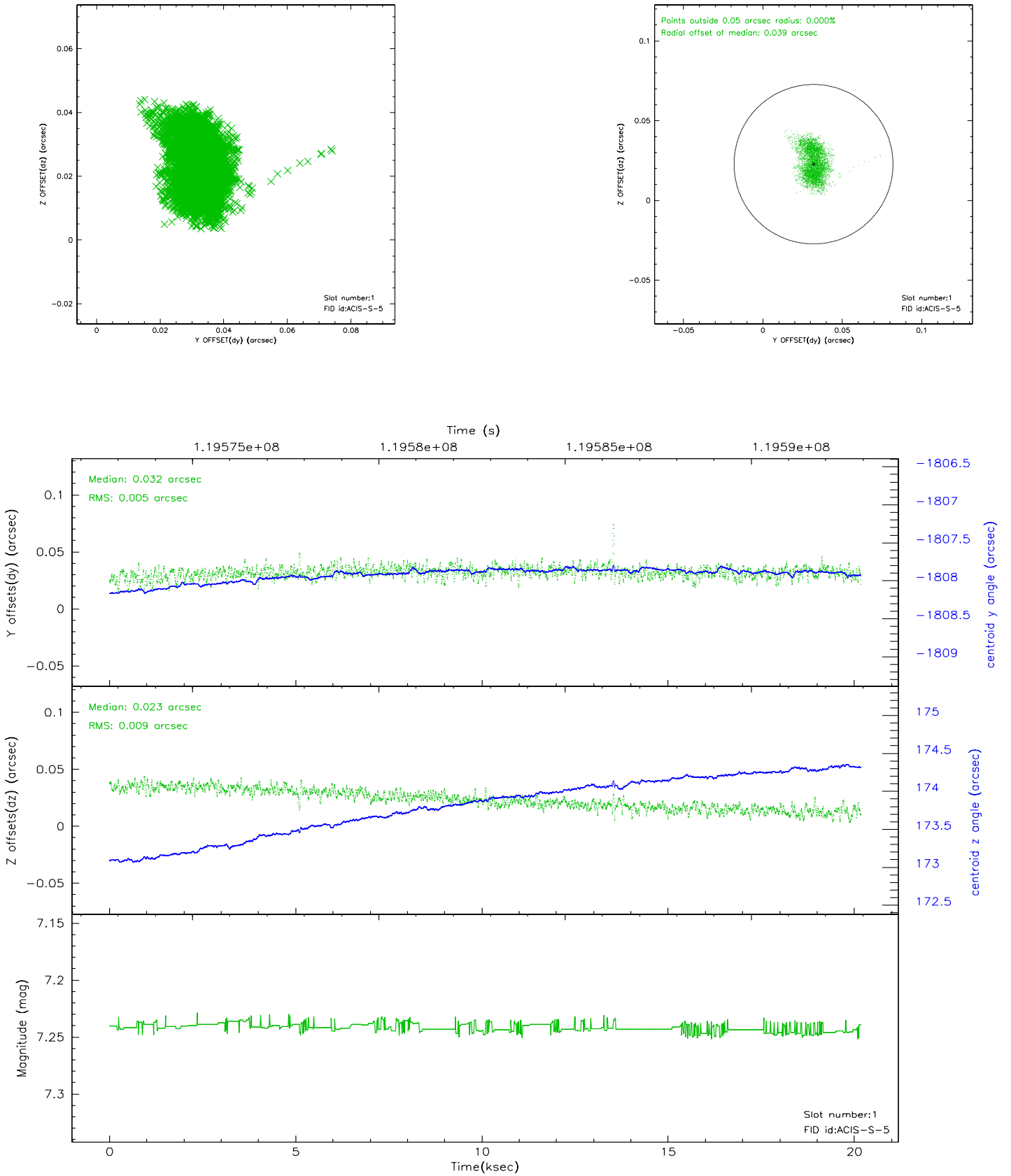


2.5 FID Slots

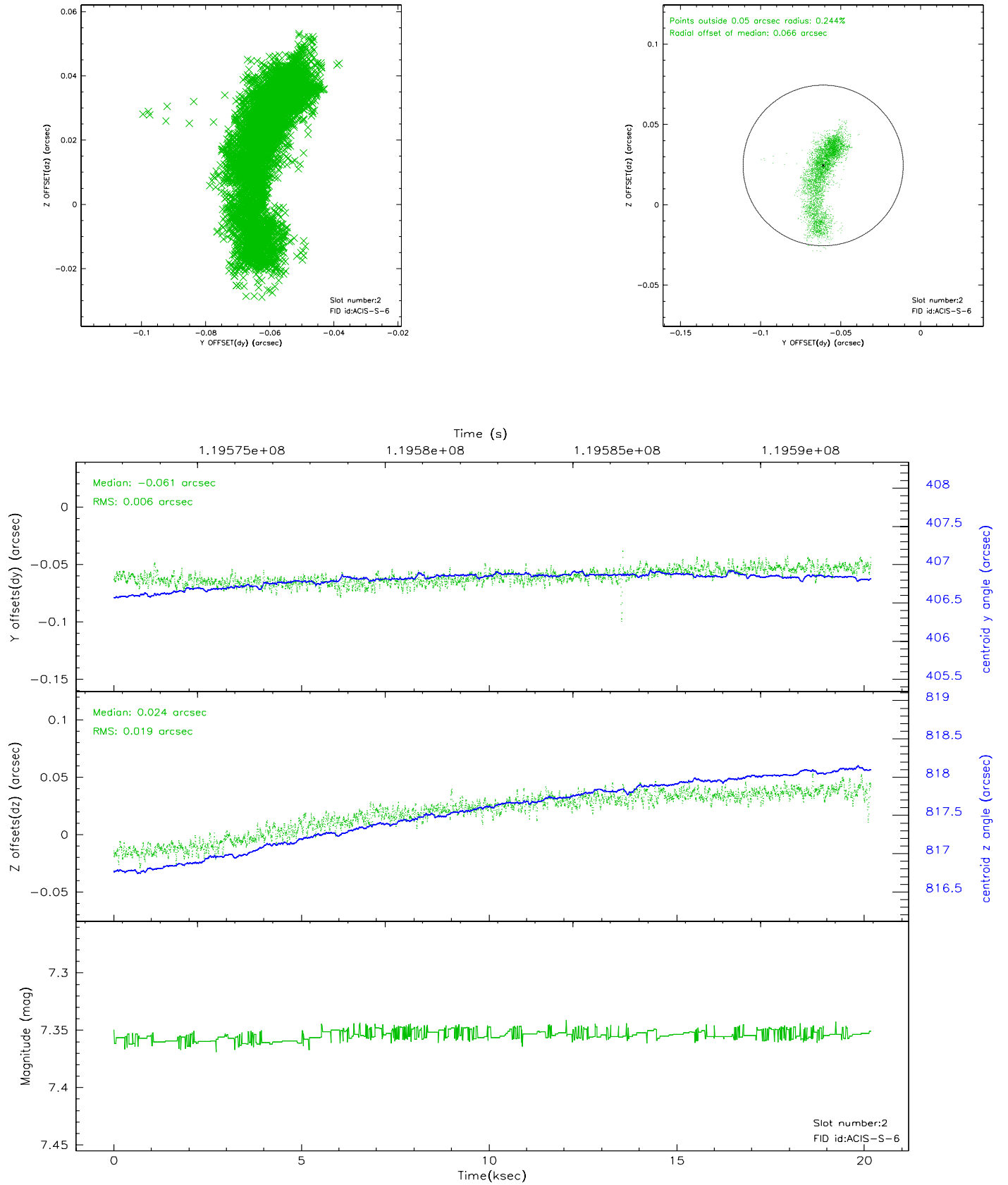
2.5.1 Slot 0



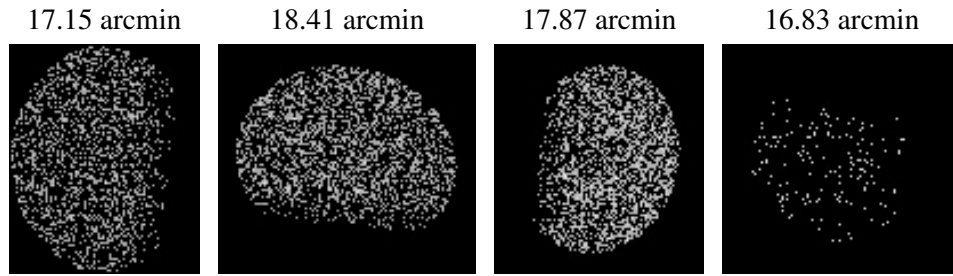
2.5.2 Slot 1



2.5.3 Slot 2



3 Point Sources



A Summary

A.1 Status

V&V Scientist	Jen Lauer
V&V Date (YYYY-MM-DD)	2007.01.10
V&V Edition	1
V&V Disposition and Status	OK
V&V Charge Time	20.096

A.2 Comments