

# V&V Reference Report

## L2 ASCDS Version : 7.6.9

Observation 2393 - L2 Version 001  
Chandra X-Ray Center

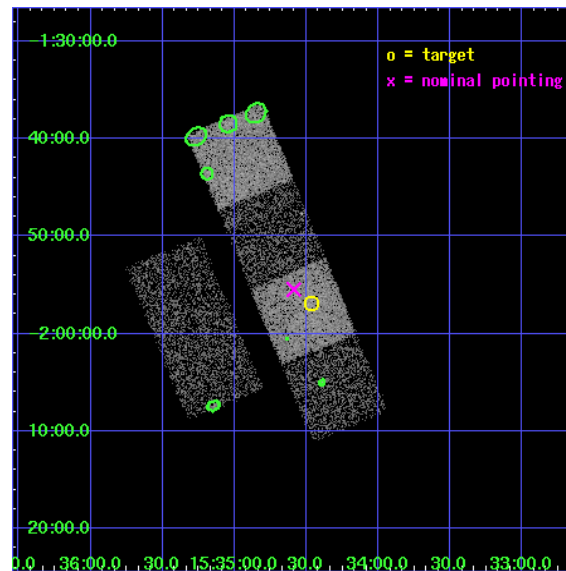
L2 Processing Date : Nov 2 2006

## Contents

<b>1</b>	<b>Front</b>	<b>2</b>
<b>2</b>	<b>OBI</b>	<b>3</b>
2.1	OBI . . . . .	3
2.1.1	Images . . . . .	3
2.1.2	Bias . . . . .	3
2.1.3	Parameters . . . . .	4
2.1.4	Events . . . . .	4
2.2	Compared Parameters . . . . .	5
2.3	Aspect . . . . .	6
2.4	Star Slots . . . . .	9
2.4.1	Slot 3 . . . . .	9
2.4.2	Slot 4 . . . . .	10
2.4.3	Slot 5 . . . . .	11
2.4.4	Slot 6 . . . . .	12
2.4.5	Slot 7 . . . . .	13
2.5	FID Slots . . . . .	14
2.5.1	Slot 0 . . . . .	14
2.5.2	Slot 1 . . . . .	15
2.5.3	Slot 2 . . . . .	16
<b>3</b>	<b>Point Sources</b>	<b>17</b>
<b>A</b>	<b>Summary</b>	<b>18</b>
A.1	Status . . . . .	18
A.2	Comments . . . . .	18

# 1 Front

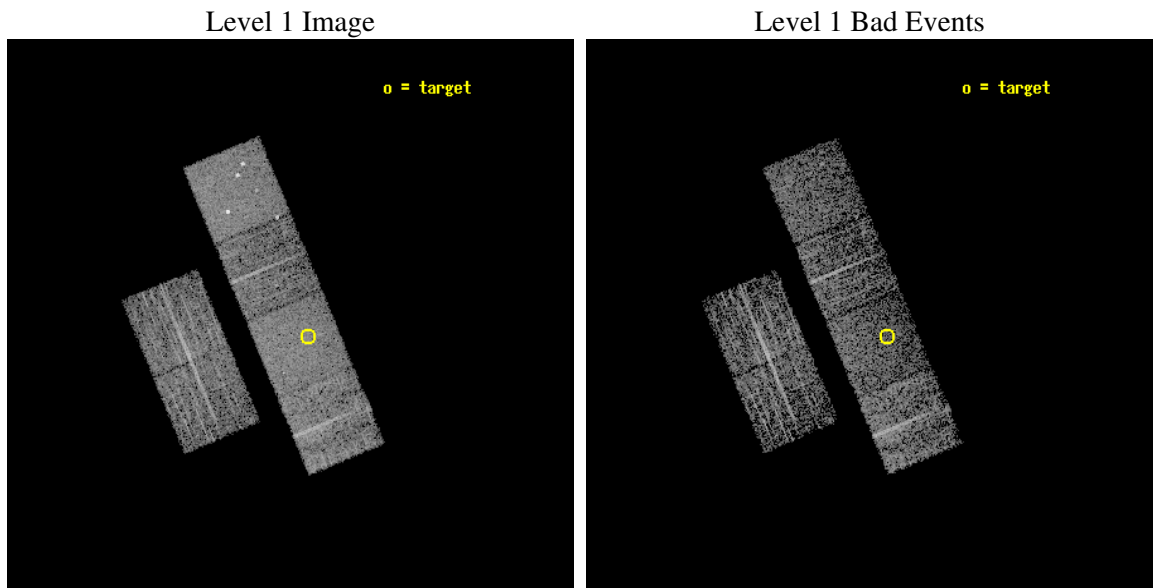
seq_num	100021
obs_id	2393
title	X-RAY SPECTROSCOPY OF COMET C/1999 T1
observer	Dr. Vladimir Krasnopolsky
object	C/1999 T1
dtcycle	0
cycle	P
ra_targ	233.61661
dec_targ	-1.94875
ra_nom	233.64683750361
dec_nom	-1.9243426575664
roll_nom	67.385335390524
revision	2
ontime	3158.4000029415
livetime	3118.4064403441
ontime2	3158.4000029415
ontime3	3158.4000029415
ontime5	3158.4000029415
ontime6	3158.4000029415
ontime7	3158.4000029415
ontime8	3155.1590427011
l2events	32212



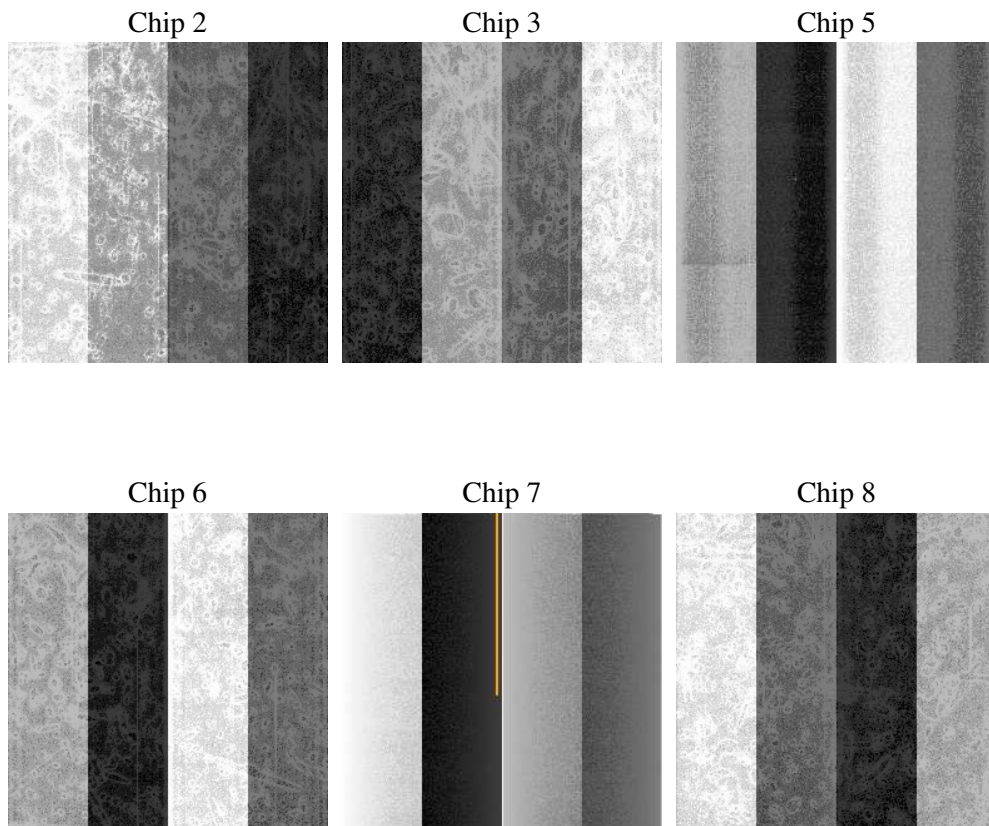
## 2 OBI

### 2.1 OBI

#### 2.1.1 Images



#### 2.1.2 Bias



### 2.1.3 Parameters

obi_num	0
ascdsver	7.6.9
caldbver	3.2.3
date	2006-11-02T21:42:50
revision	2

sched_exp_time	3400.000000
ontime	3163.2133512944
ontime2	3163.2133512944
ontime3	3163.2133413106
ontime5	3163.2133712173
ontime6	3163.2133413106
ontime7	3163.2133512944
ontime8	3159.9722813666
l1events	143786

### 2.1.4 Events

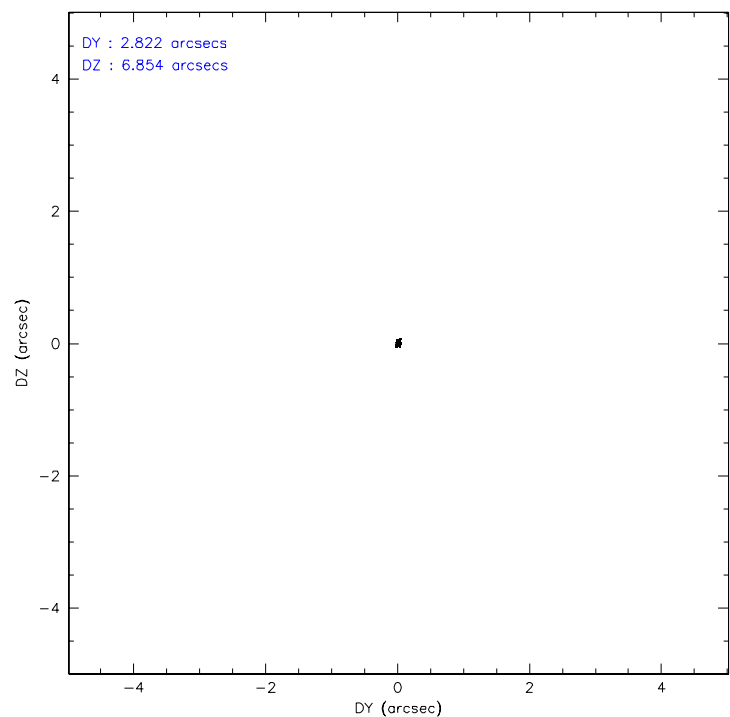
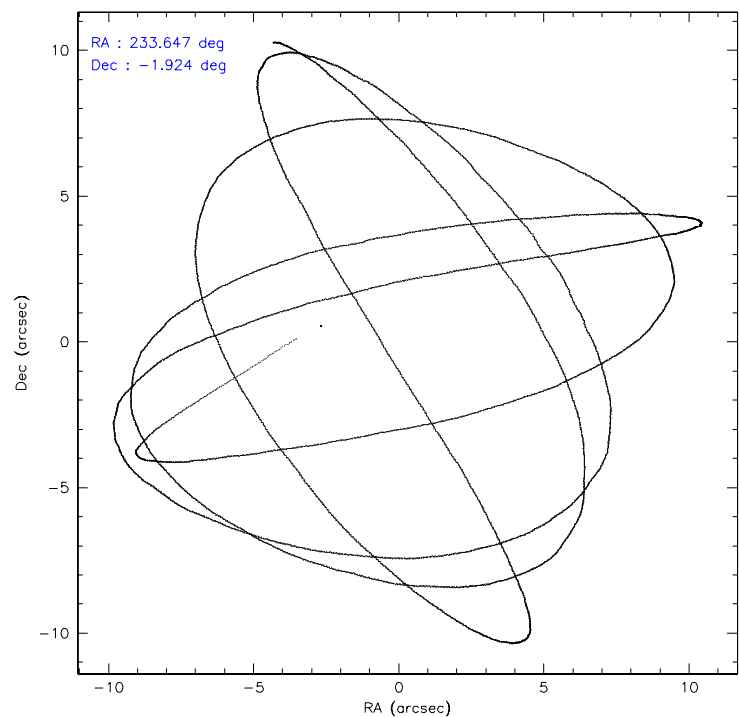
	ccd 2	ccd 3	ccd 5	ccd 6	ccd 7	ccd 8
level 1 events	21585	19726	29181	19441	26410	27443
rejected events	18988	17119	15184	16572	15002	21946
rejected %	87%	86%	52%	85%	56%	79%

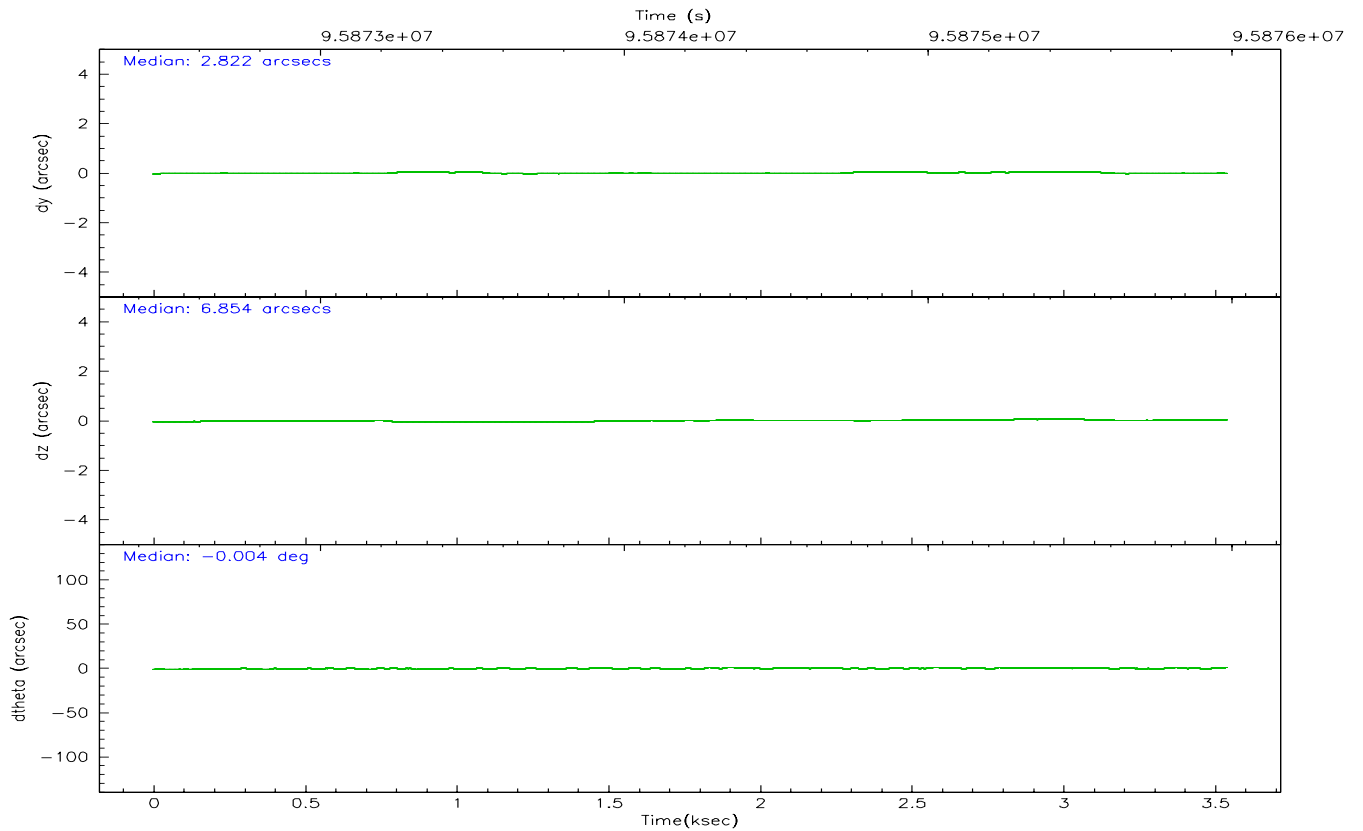
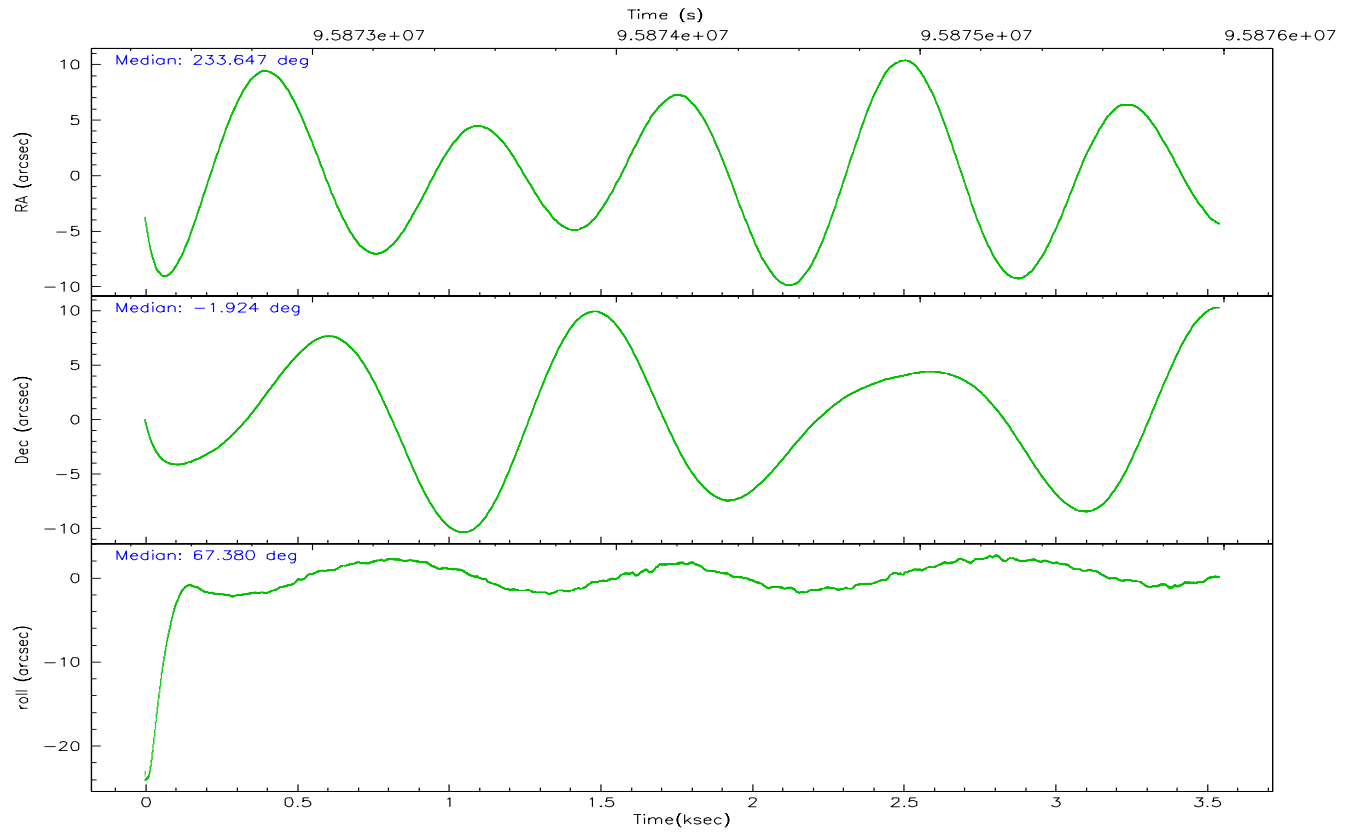
	ccd 2	ccd 3	ccd 5	ccd 6	ccd 7	ccd 8
grade 0 events	1152	1128	2333	1329	1425	1960
	5%	5%	7%	6%	5%	7%
grade 1 events	0	8	59	9	9	24
	0%	0%	0%	0%	0%	0%
grade 2 events	591	591	4185	616	2737	1143
	2%	2%	14%	3%	10%	4%
grade 3 events	219	226	325	233	706	574
	1%	1%	1%	1%	2%	2%
grade 4 events	201	228	335	207	676	537
	0%	1%	1%	1%	2%	1%
grade 5 events	665	749	1295	833	1647	1020
	3%	3%	4%	4%	6%	3%
grade 6 events	439	439	6838	487	5871	1294
	2%	2%	23%	2%	22%	4%
grade 7 events	18318	16357	13811	15727	13339	20891
	84%	82%	47%	80%	50%	76%

## 2.2 Compared Parameters

Parameter	Planned	Actual	Parameter	Planned	Actual
Instrument	ACIS	ACIS	Obspar format version number	6	6
Detector	ACIS-235678	ACIS-235678	Obspar file type	PREDICTED	ACTUAL
Grating	NONE	NONE	Obspar update status	NONE	UPDATED
Data mode	FAINT	FAINT	Number of optional ACIS chips dropped	0	0
Observation mode	POINTING	POINTING	On-chip summing requested	N	N
Pointing RA	233.650566	233.6468375036102	Subarray requested	NONE	NONE
Pointing Dec	-1.951432	-1.924342657566385	Alternating exposures requested	N	N
Pointing Roll	67.228907	67.38533539052354	Primary exposure time	0.000000	3.2
SIM focus pos (mm)	-0.684267	-0.6828225247311905			
SIM defocus (mm)	0	0.001444936568705701			
SIM translation stage pos (mm)	-190.132523	-190.1425803651734			
SIM translation stage offset (mm)	0	0.01005778216563158			
Observation start time	95872587.184000	95871720.38392501			
Observation start date	2001-01-14T15:15:23	2001-01-14T15:02:00			
Observation end time	95875987.184000	95876679.334116			
Observation end date	2001-01-14T16:12:03	2001-01-14T16:24:39			
Read mode	TIMED	TIMED			

## 2.3 Aspect





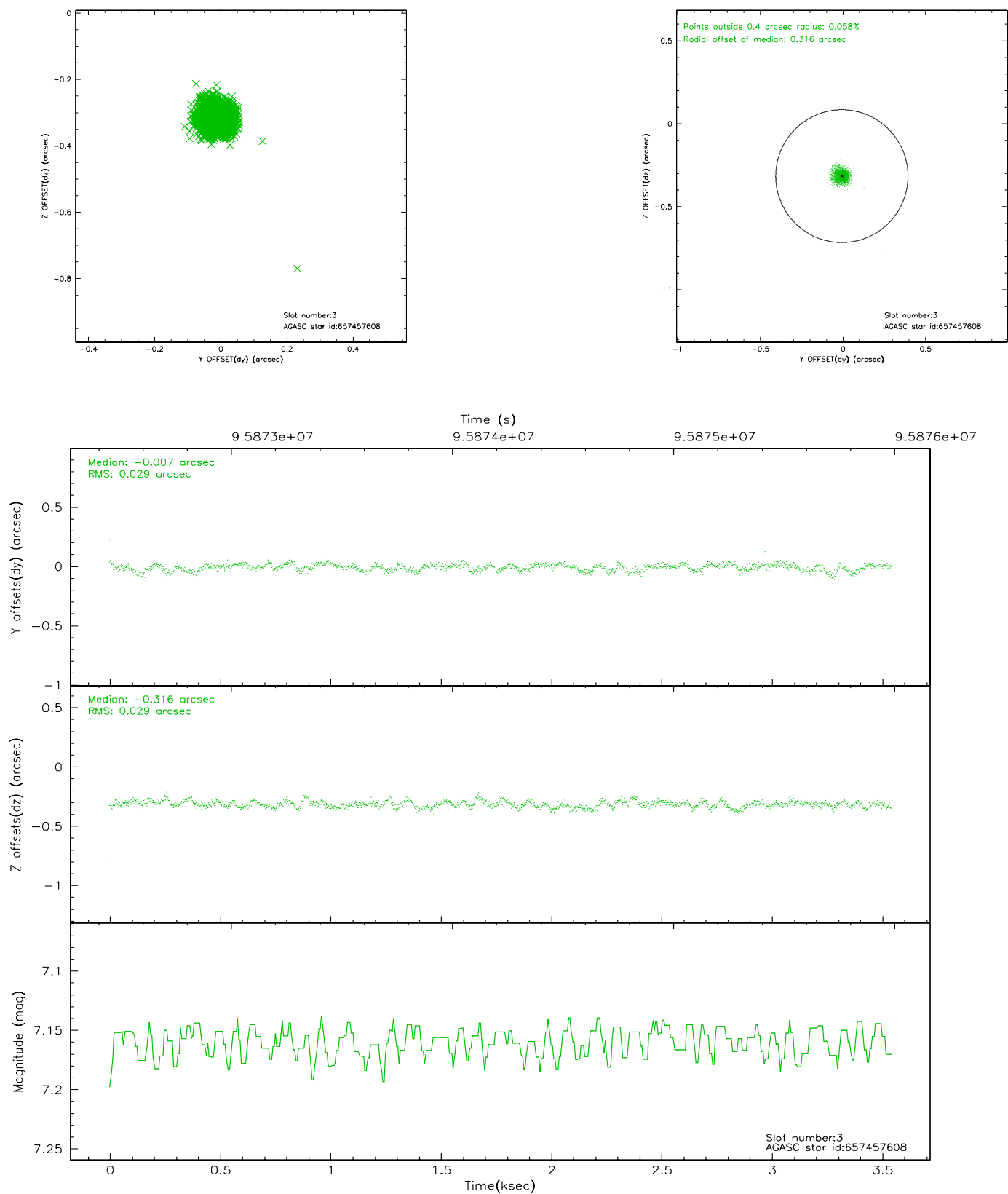
### Slot Statistics

slot	status	id	mag	n_pts	med_dy	med_dz	dr1	dr2	ra	dec	mean_y	mean_z
0	FID	ACIS-S-2	7.11	864	0.003	0.040	0.007	0.011	0.000000	0.000000	-755.47	-1727.92
1	FID	ACIS-S-4	7.20	864	-0.087	-0.012	0.005	0.008	0.000000	0.000000	2156.92	178.66
2	FID	ACIS-S-5	7.24	864	0.053	-0.020	0.006	0.009	0.000000	0.000000	-1805.96	174.37
3	GUIDE	657457608	7.16	1729	-0.007	-0.316	0.041	0.067	233.101010	-1.783508	-208.63	2056.49
4	GUIDE	657982408	7.95	1729	0.100	0.350	0.088	0.131	234.053369	-2.516626	-1315.55	-2122.39
5	GUIDE	657460064	8.51	1728	-0.106	-0.068	0.056	0.088	233.622615	-1.450266	1623.54	789.62
6	GUIDE	657458944	8.86	1728	-0.210	0.233	0.066	0.107	233.926033	-1.476362	1961.19	-251.62
7	GUIDE	657982560	8.53	1728	0.221	-0.199	0.077	0.123	232.953842	-2.066441	-1351.54	2150.01

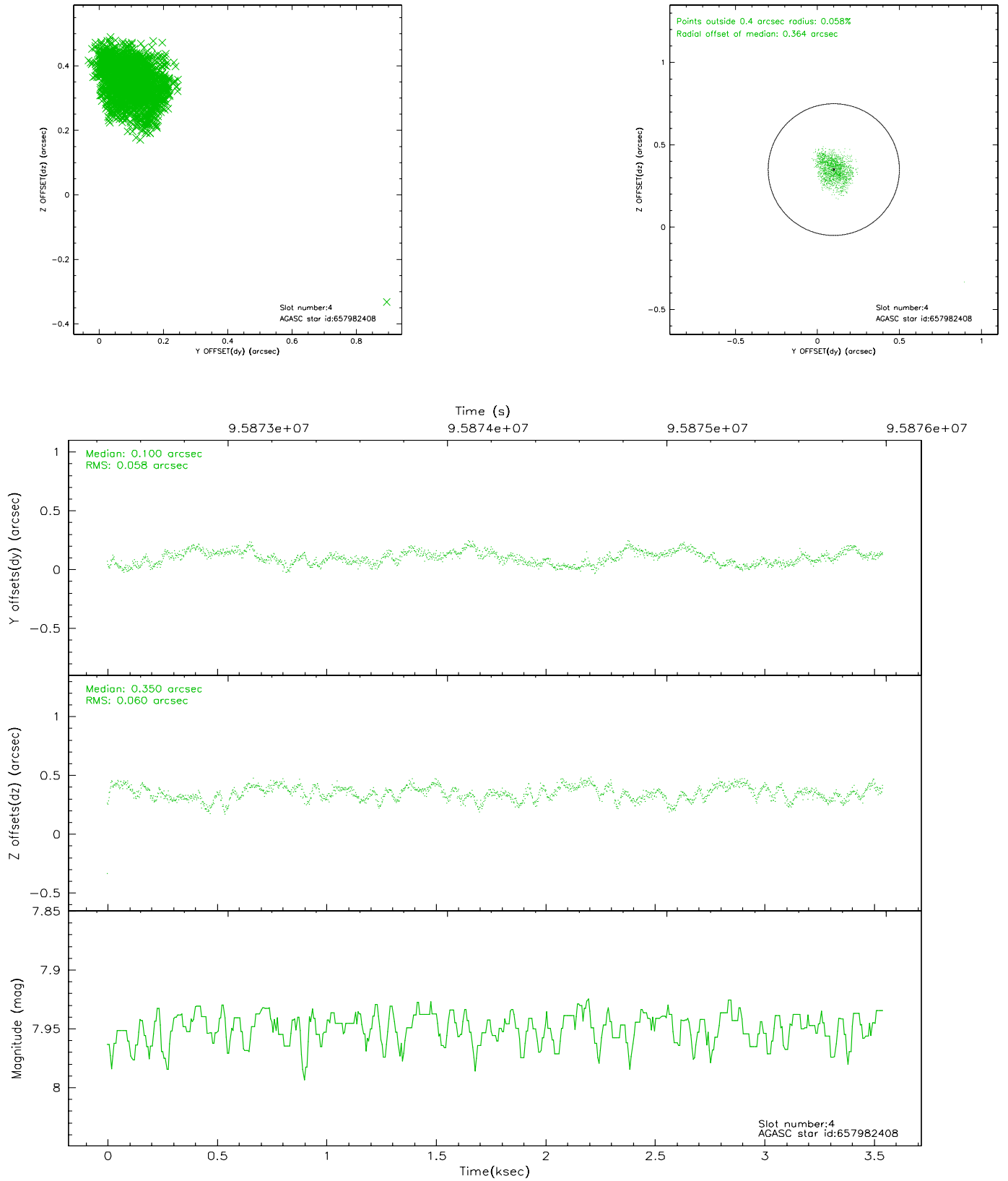


## 2.4 Star Slots

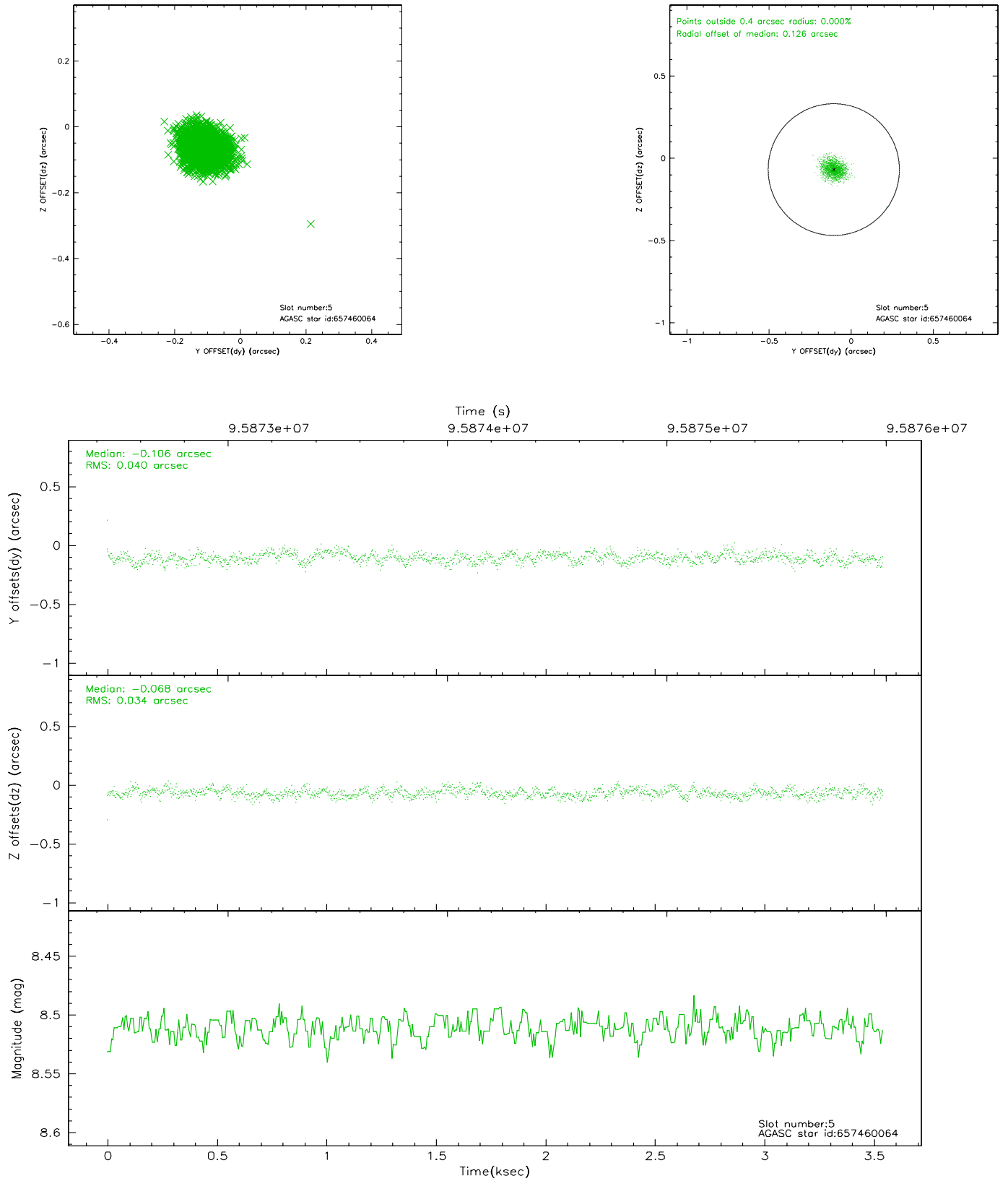
### 2.4.1 Slot 3



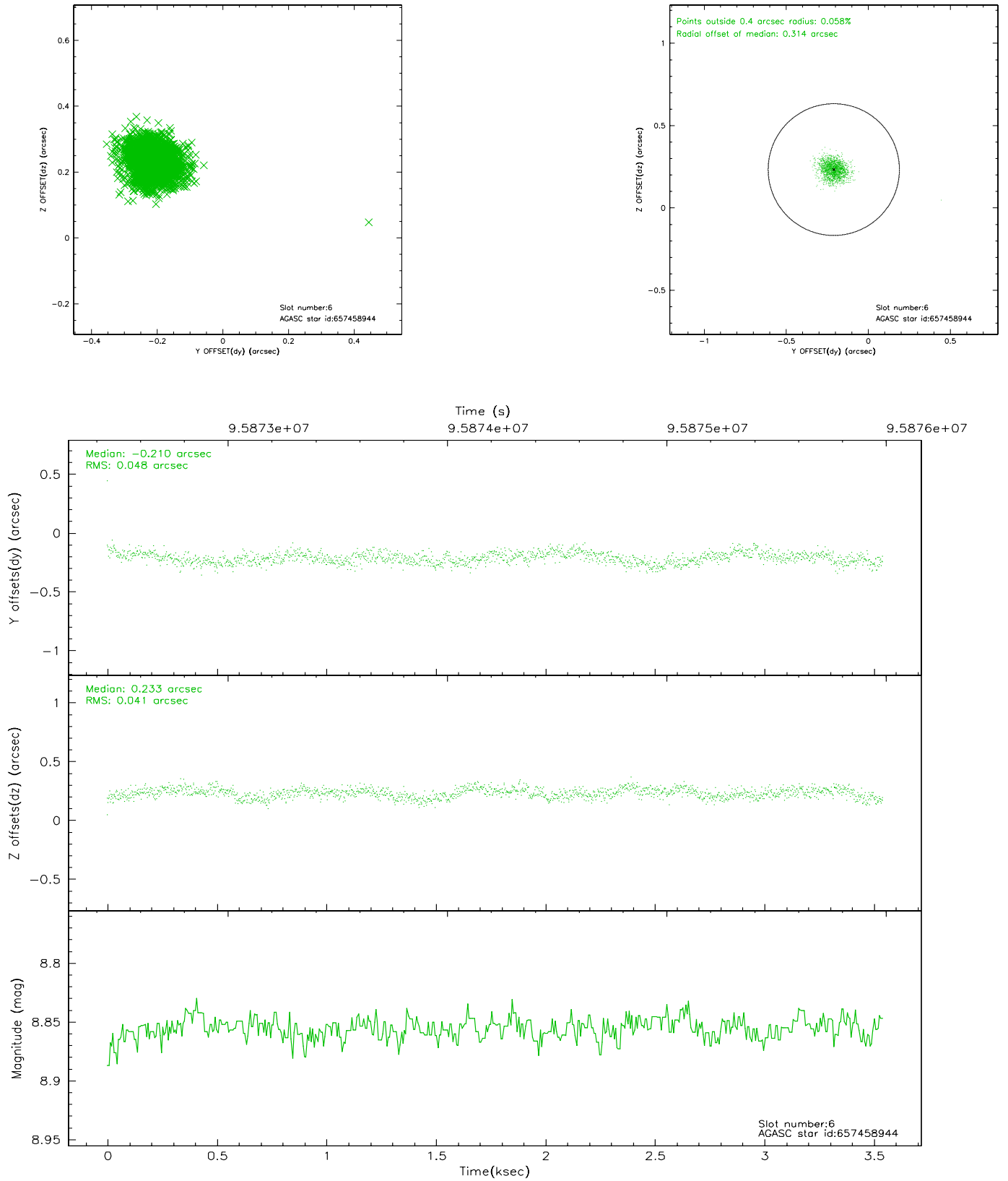
## 2.4.2 Slot 4



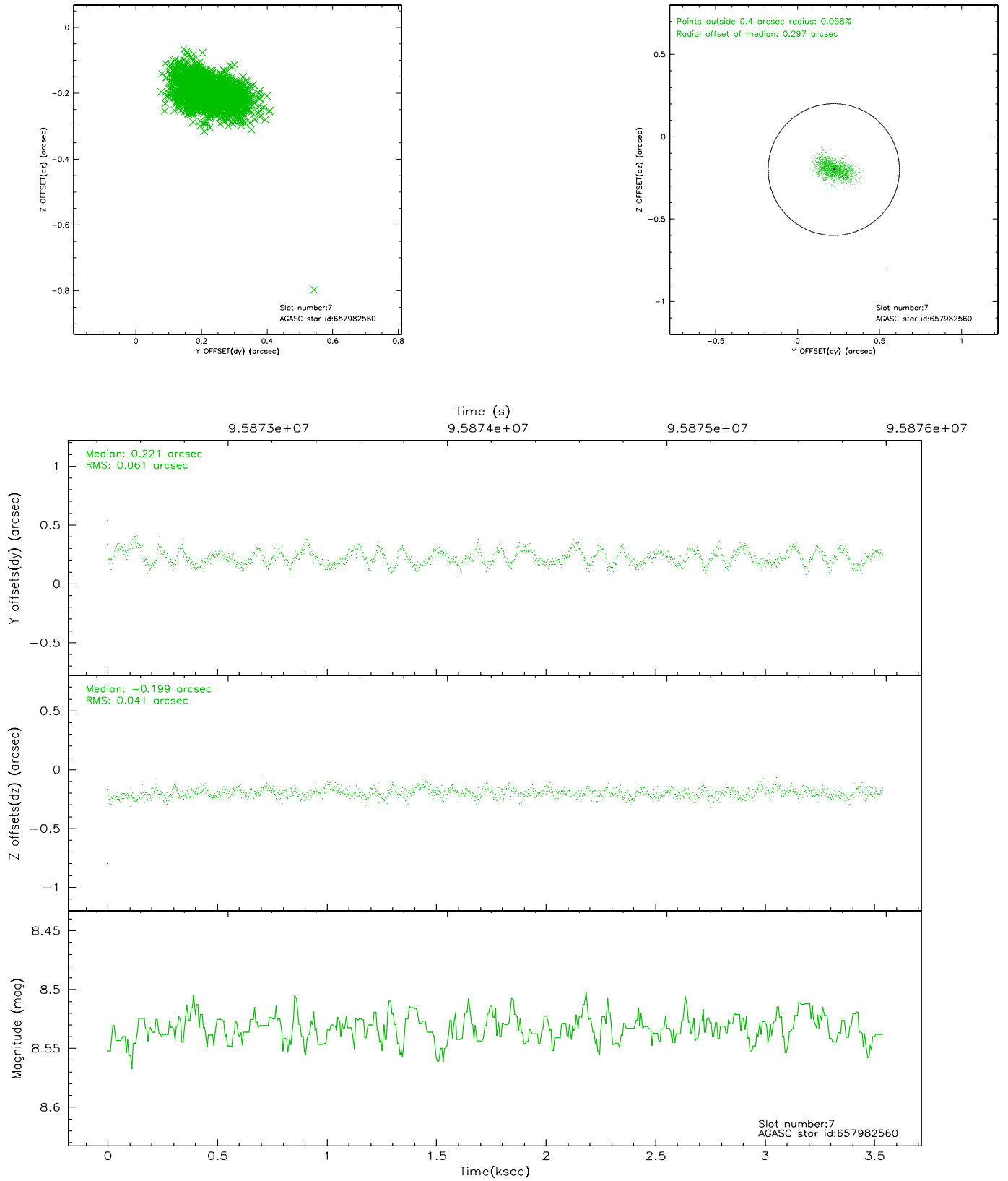
### 2.4.3 Slot 5



## 2.4.4 Slot 6

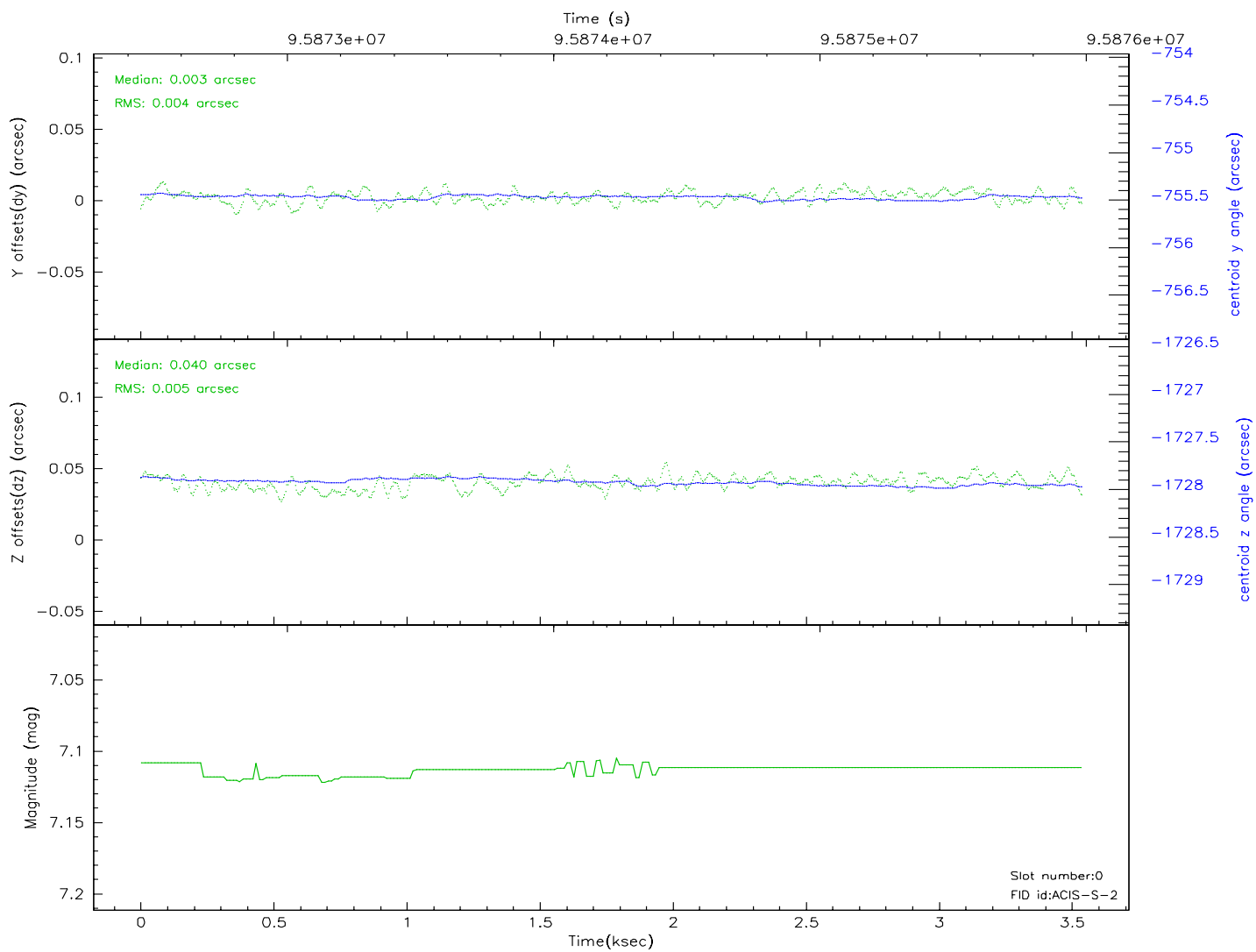
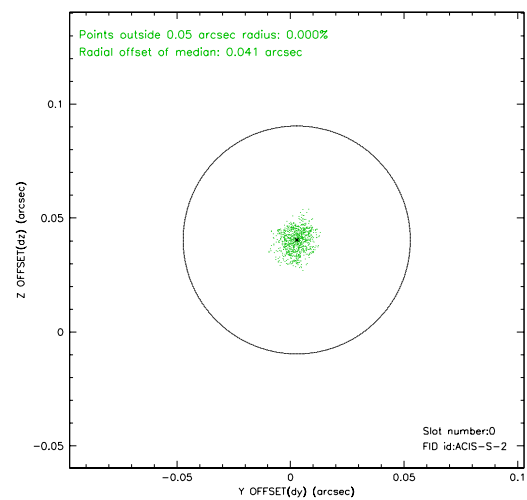
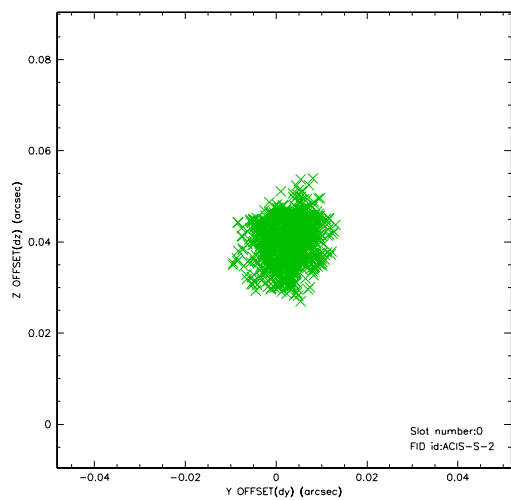


## 2.4.5 Slot 7

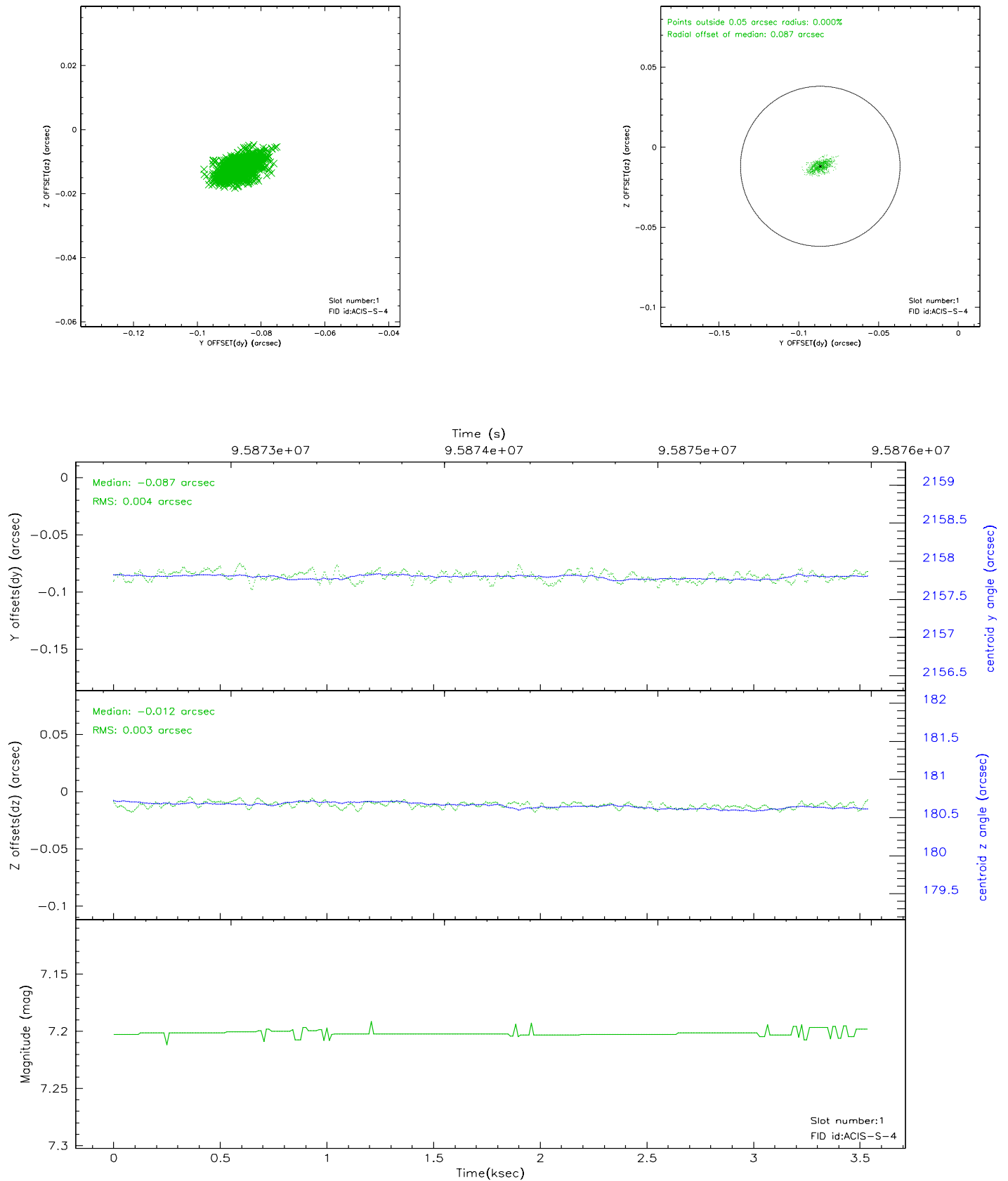


## 2.5 FID Slots

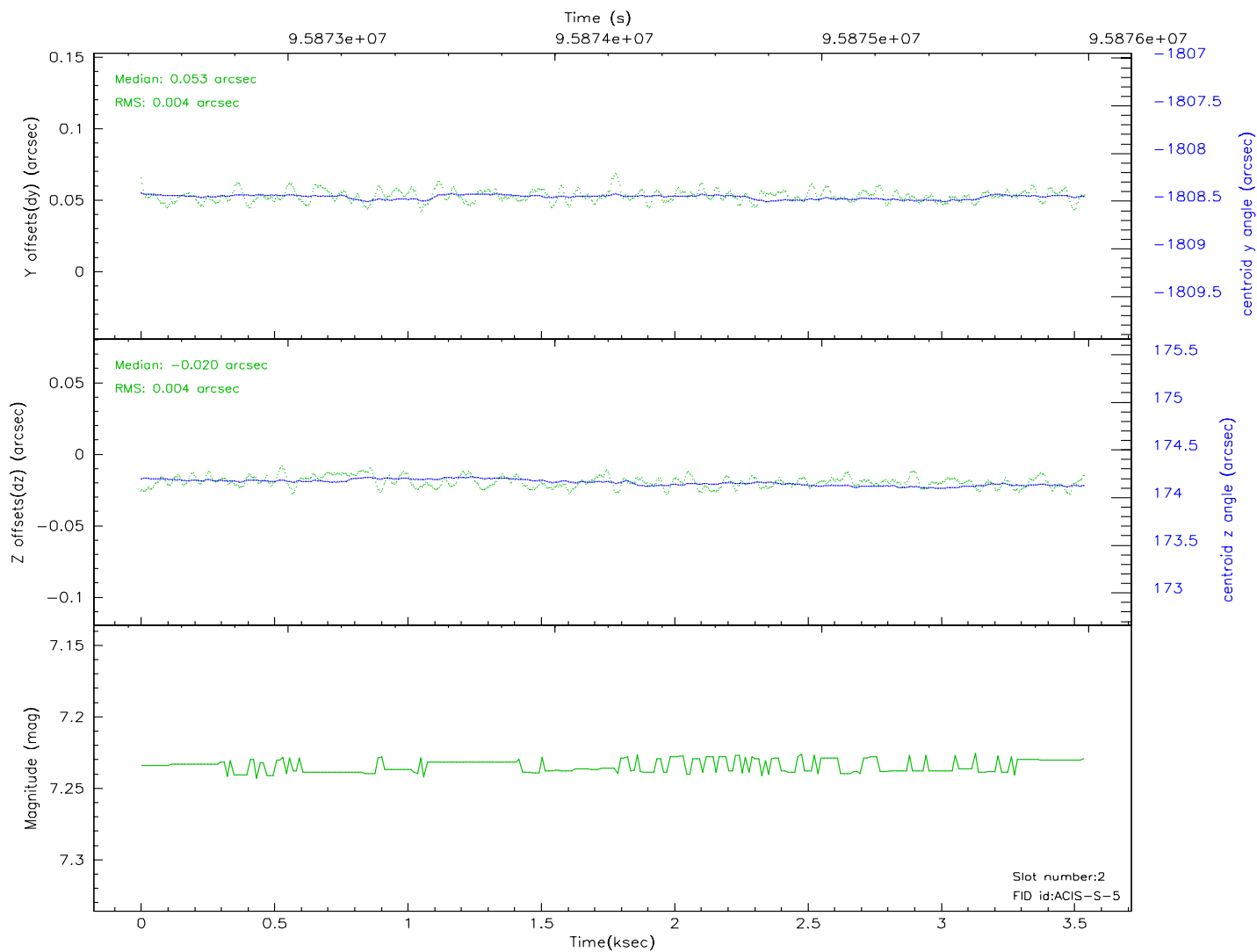
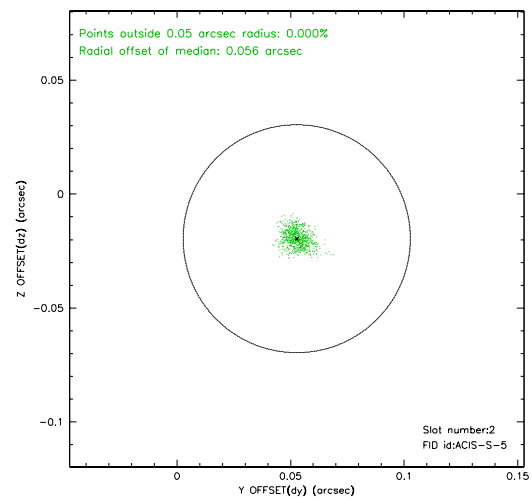
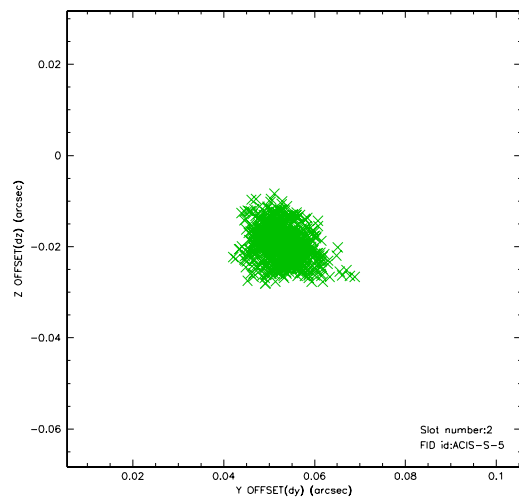
### 2.5.1 Slot 0



## 2.5.2 Slot 1

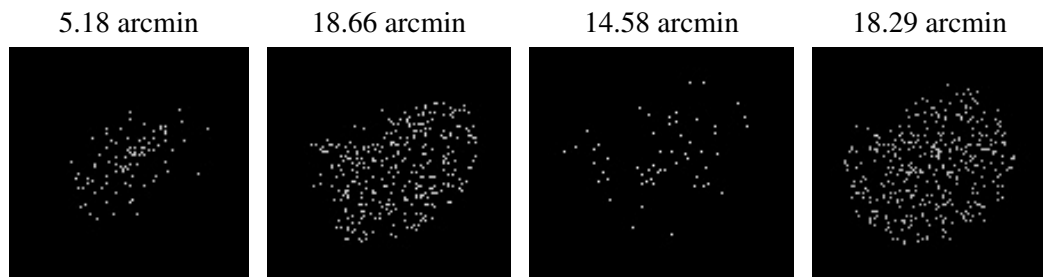


### 2.5.3 Slot 2





### 3 Point Sources



## A Summary

### A.1 Status

V&V Scientist	Jen Lauer
V&V Date (YYYY-MM-DD)	2006.11.06
V&V Edition	1
V&V Disposition and Status	OK
V&V Charge Time	3.161

### A.2 Comments

Monitor constraint met. Comet not visible.