

V&V Reference Report

L2 ASCDS Version : 7.6.10

Observation 941 - L2 Version 001
Chandra X-Ray Center

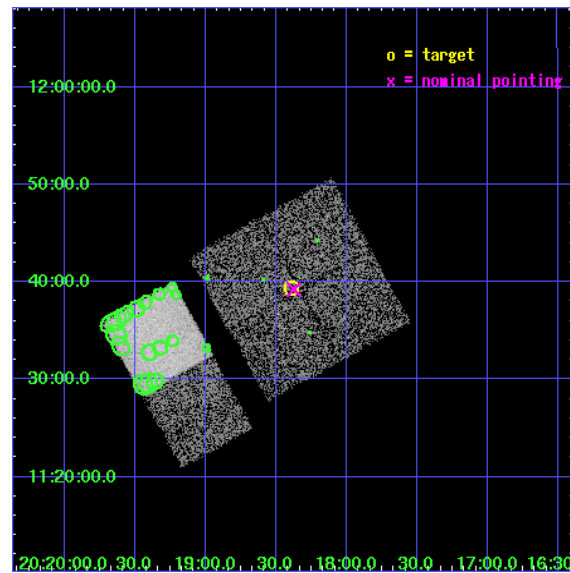
L2 Processing Date : Jun 6 2007

Contents

1	Front	2
2	OBI	3
2.1	OBI	3
2.1.1	Images	3
2.1.2	Bias	3
2.1.3	Parameters	4
2.1.4	Events	4
2.2	Compared Parameters	5
2.3	Aspect	6
2.4	Star Slots	9
2.4.1	Slot 3	9
2.4.2	Slot 4	10
2.4.3	Slot 5	11
2.4.4	Slot 6	12
2.4.5	Slot 7	13
2.5	FID Slots	14
2.5.1	Slot 0	14
2.5.2	Slot 1	15
2.5.3	Slot 2	16
3	Point Sources	17
A	Summary	18
A.1	Status	18
A.2	Comments	18

1 Front

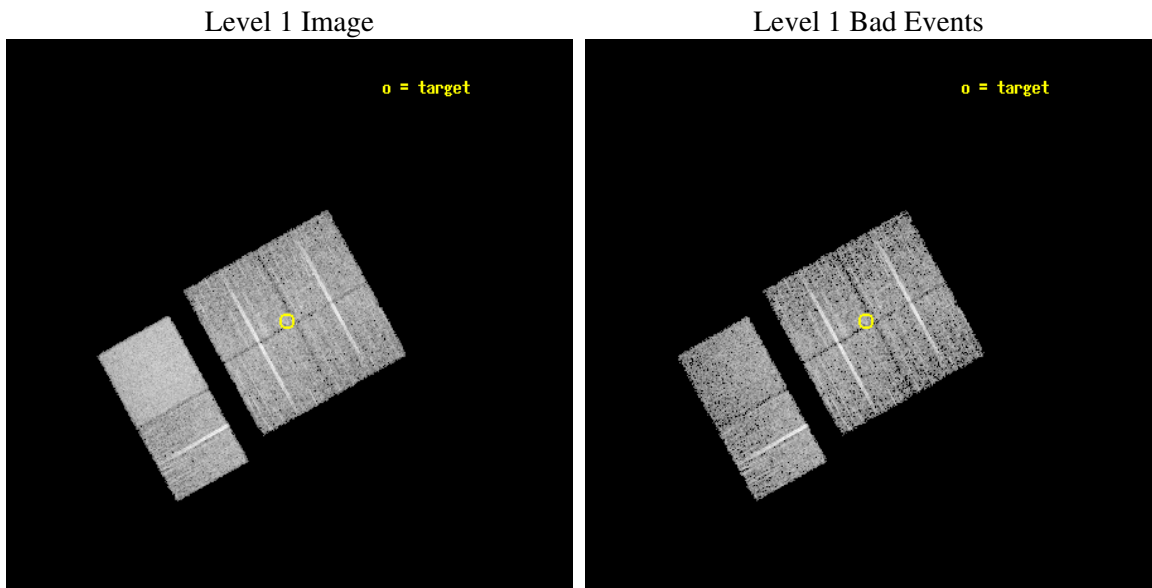
seq_num	900013
obs_id	941
title	AXAF OBSERVATION OF FAINT HARD X-RAY SOURCES DISCOVERED WITH ASCA
observer	DR. TADAYUKI TAKAHASHI
object	AX J2018+1139
dtcycle	0
cycle	P
ra_targ	304.5975
dec_targ	11.657111
ra_nom	304.59350839705
dec_nom	11.654046479411
roll_nom	241.01163970225
revision	2
ontime	6627.2000061721
livetime	6543.2824092731
ontime0	6627.2000061721
ontime1	6623.9590459168
ontime2	6627.2000061721
ontime3	6627.2000061721
ontime6	6627.2000061721
ontime7	6627.2000061721
l2events	53962



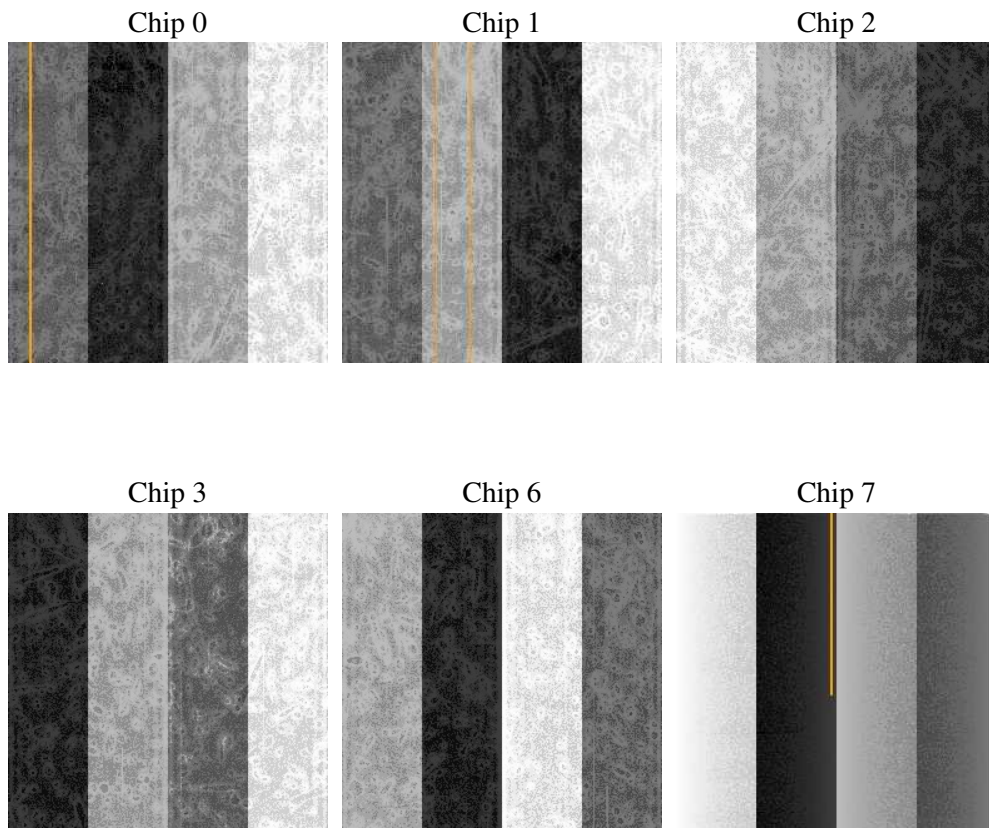
2 OBI

2.1 OBI

2.1.1 Images



2.1.2 Bias



2.1.3 Parameters

obi_num	0
ascdsver	7.6.10
caldbver	3.4.0
date	2007-06-06T12:51:00
revision	2

sched_exp_time	6500.000000
ontime	6627.2000061721
ontime0	6627.2000061721
ontime1	6623.9590459168
ontime2	6627.2000061721
ontime3	6627.2000061721
ontime6	6627.2000061721
ontime7	6627.2000061721
l1events	268098

2.1.4 Events

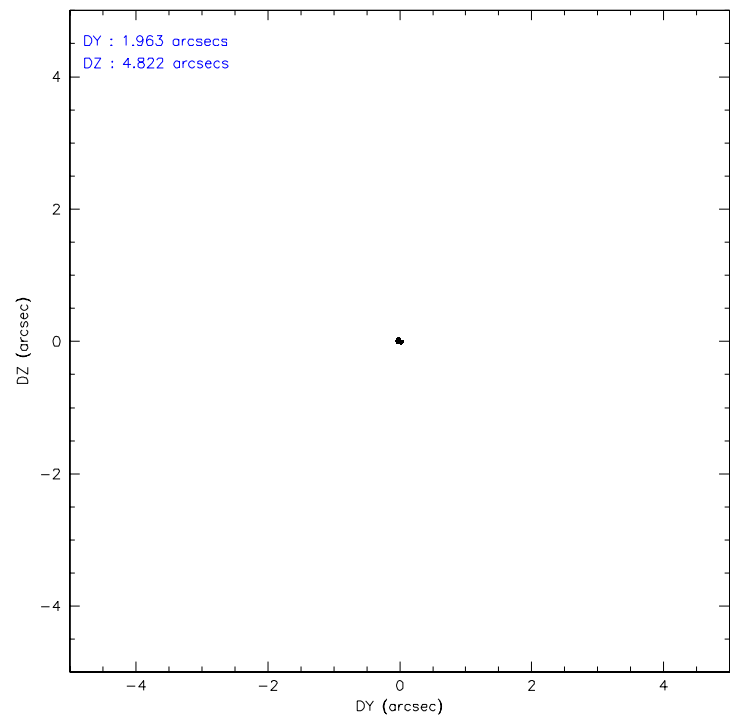
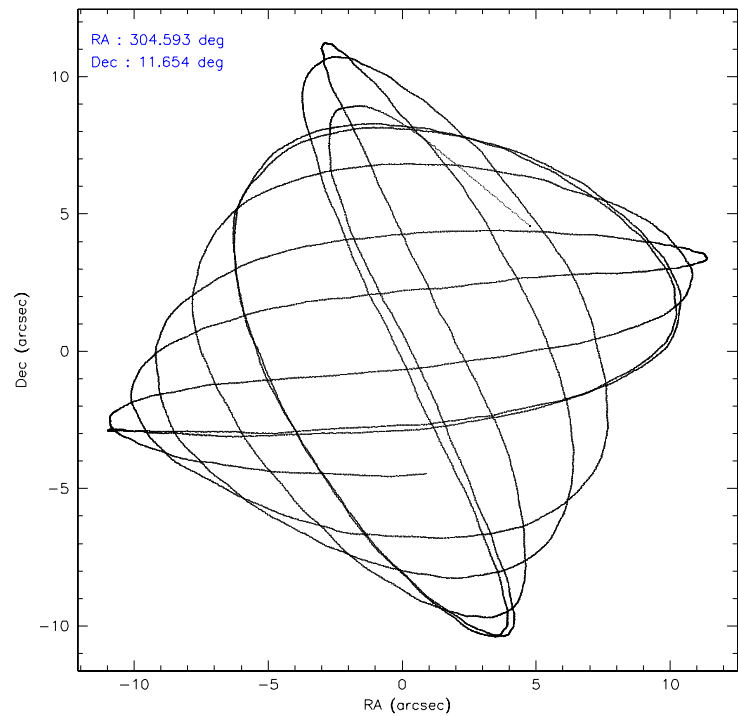
	ccd 0	ccd 1	ccd 2	ccd 3	ccd 6	ccd 7
level 1 events	37018	38436	42334	40504	44141	65665
rejected events	32403	33535	37827	35877	39204	31279
rejected %	87%	87%	89%	88%	88%	47%

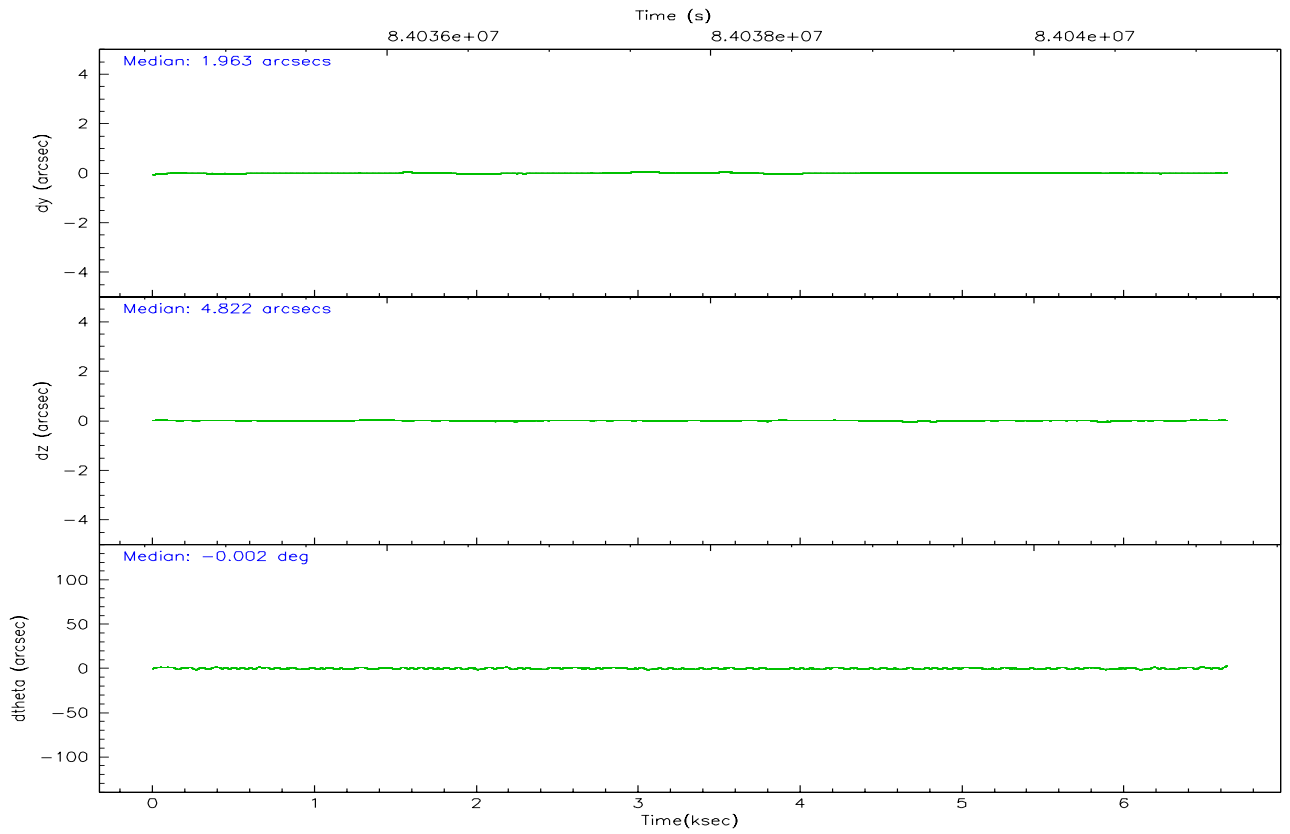
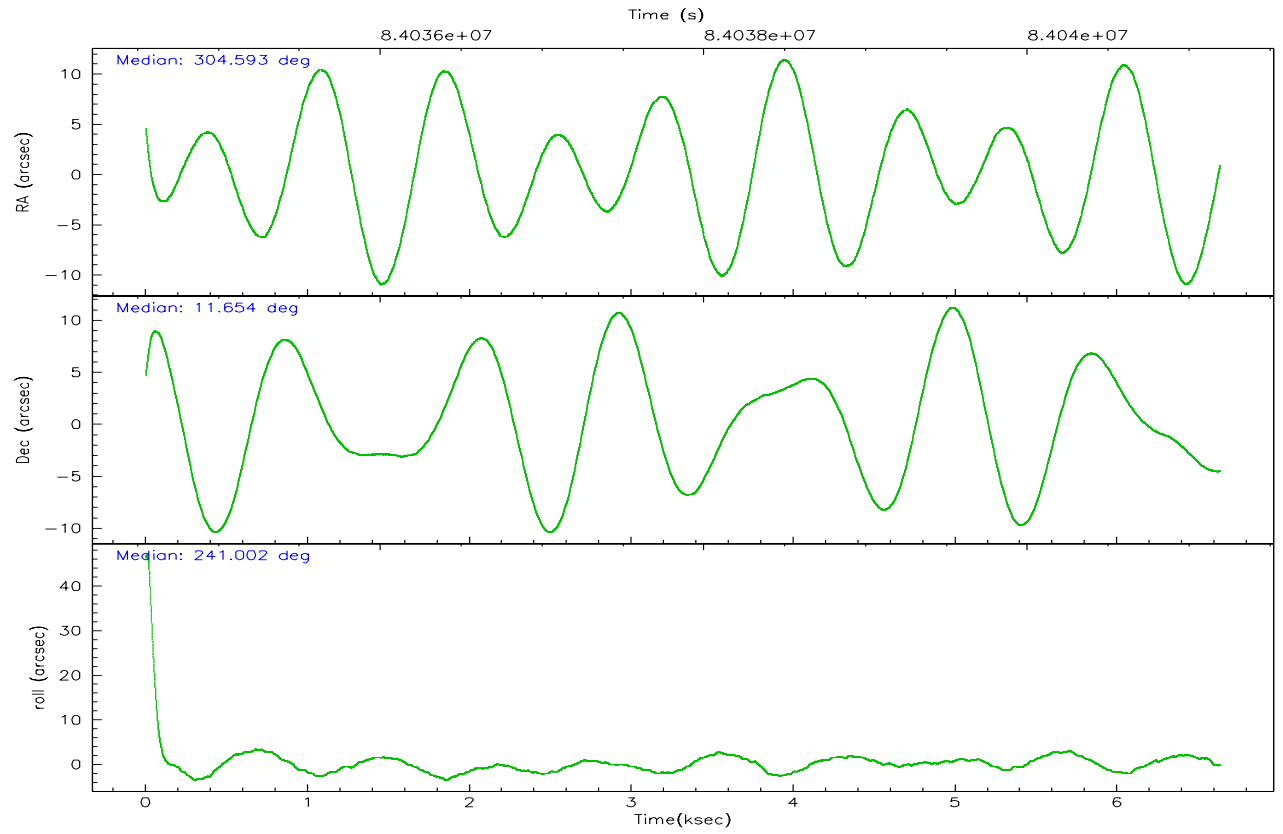
	ccd 0	ccd 1	ccd 2	ccd 3	ccd 6	ccd 7
grade 0 events	2172	2255	2111	2228	2289	4140
	5%	5%	4%	5%	5%	6%
grade 1 events	18	13	13	16	30	54
	0%	0%	0%	0%	0%	0%
grade 2 events	1002	1011	956	912	981	6877
	2%	2%	2%	2%	2%	10%
grade 3 events	465	517	459	482	493	3099
	1%	1%	1%	1%	1%	4%
grade 4 events	433	484	443	467	480	3104
	1%	1%	1%	1%	1%	4%
grade 5 events	1411	1550	1441	1511	1755	5062
	3%	4%	3%	3%	3%	7%
grade 6 events	789	889	810	798	954	18346
	2%	2%	1%	1%	2%	27%
grade 7 events	30728	31717	36101	34090	37159	24983
	83%	82%	85%	84%	84%	38%

2.2 Compared Parameters

Parameter	Planned	Actual	Parameter	Planned	Actual
Instrument	ACIS	ACIS	Obspar format version number	6	6
Detector	ACIS-012367	ACIS-012367	Obspar file type	PREDICTED	ACTUAL
Grating	NONE	NONE	Obspar update status	NONE	UPDATED
Data mode	VFAINT	VFAINT	Number of optional ACIS chips dropped	0	0
Observation mode	POINTING	POINTING	On-chip summing requested	N	N
Pointing RA	304.593164	304.593508397047	Subarray requested	NONE	NONE
Pointing Dec	11.681631	11.65404647941148	Alternating exposures requested	N	N
Pointing Roll	240.802915	241.011639702252	Primary exposure time	3.200000	3.2
SIM focus pos (mm)	-0.782348	-0.7809083437167272			
SIM defocus (mm)	0	0.001439871863259334			
SIM translation stage pos (mm)	-233.592463	-233.5874344608287			
SIM translation stage offset (mm)	0	-0.005018542100998502			
Observation start time	84034690.184000	84033452.709582			
Observation start date	2000-08-30T14:57:06	2000-08-30T14:37:32			
Observation end time	84041190.184000	84041972.509902			
Observation end date	2000-08-30T16:45:26	2000-08-30T16:59:32			
Read mode	TIMED	TIMED			

2.3 Aspect



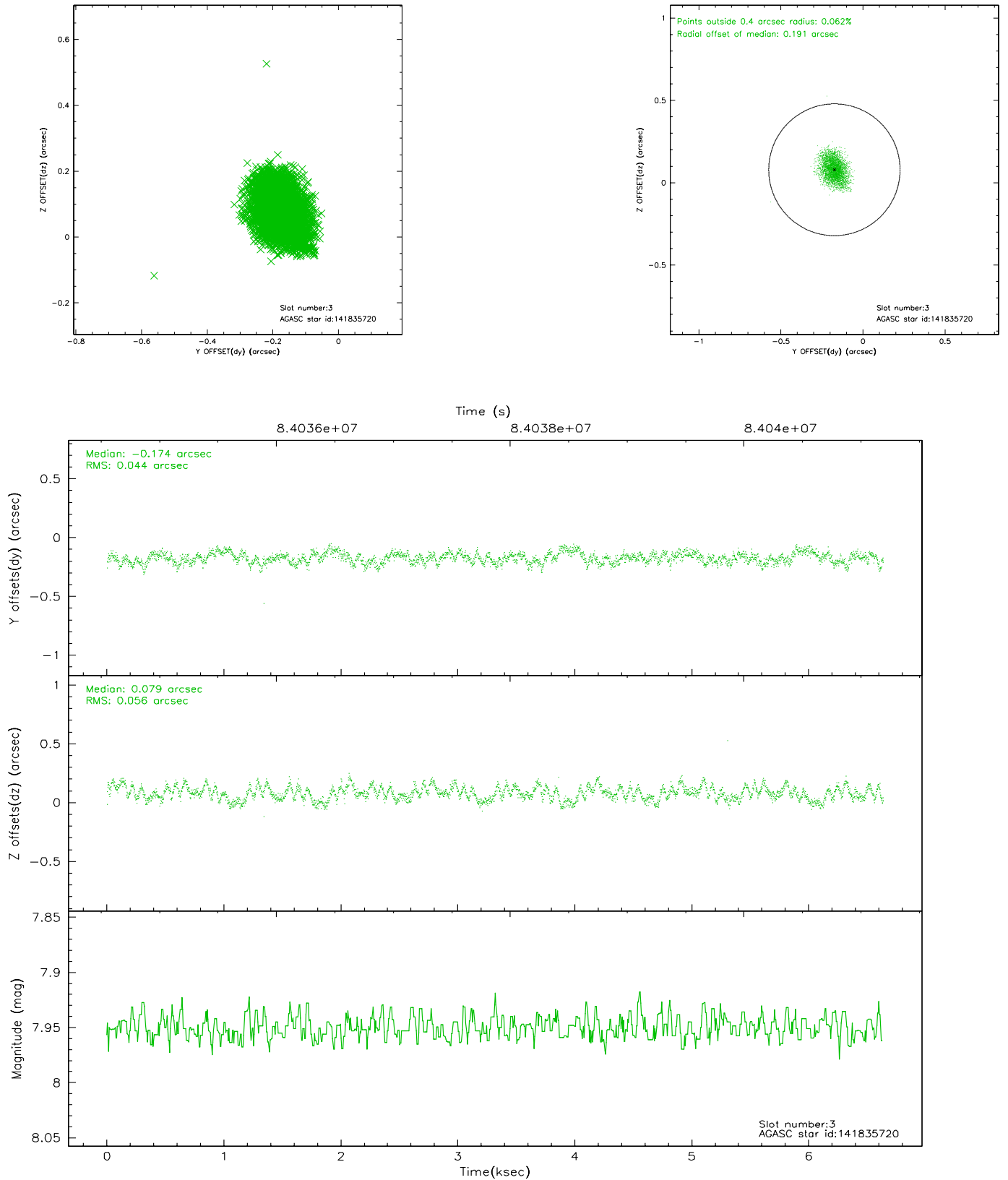


Slot Statistics

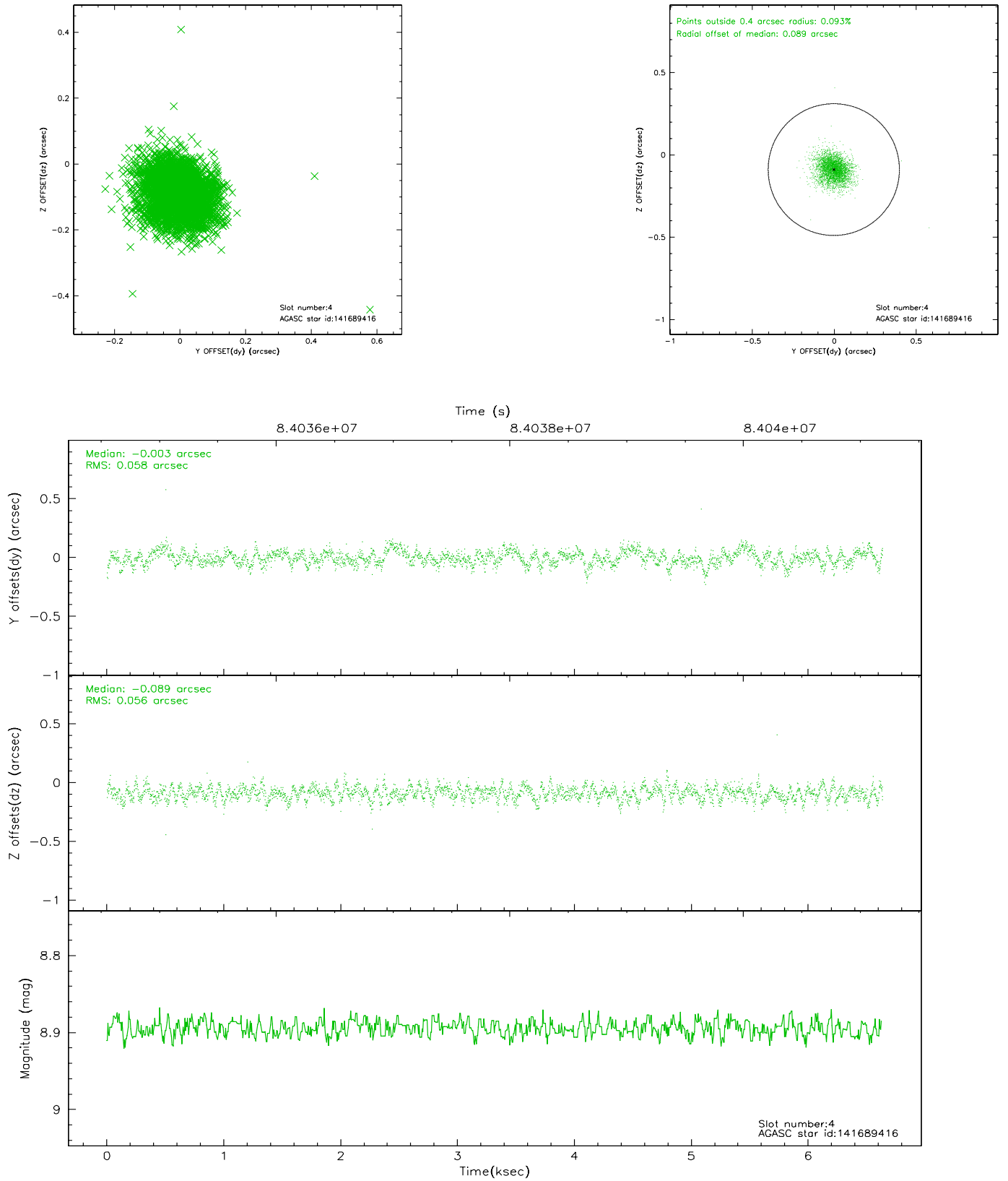
slot	status	id	mag	n_pts	med_dy	med_dz	dr1	dr2	ra	dec	mean_y	mean_z
0	FID	ACIS-I-2	7.15	1619	-0.024	-0.014	0.009	0.015	0.000000	0.000000	-756.34	-834.54
1	FID	ACIS-I-4	7.19	1619	-0.051	0.027	0.005	0.010	0.000000	0.000000	2157.30	1071.24
2	FID	ACIS-I-5	7.23	1619	-0.026	0.056	0.009	0.016	0.000000	0.000000	-1809.03	1070.12
3	GUIDE	141835720	7.95	3236	-0.174	0.079	0.076	0.121	304.766441	11.431894	486.31	973.24
4	GUIDE	141689416	8.89	3237	-0.003	-0.089	0.083	0.137	304.344893	12.217953	-1259.02	-1703.76
5	GUIDE	141689760	8.93	3236	0.017	0.080	0.067	0.108	304.320859	11.721870	341.41	-908.34
6	GUIDE	141298848	9.56	3236	0.110	-0.170	0.113	0.176	305.021454	11.151842	926.12	2250.96
7	GUIDE	141690128	9.62	3236	0.051	0.101	0.089	0.154	304.430388	11.672781	308.42	-483.87

2.4 Star Slots

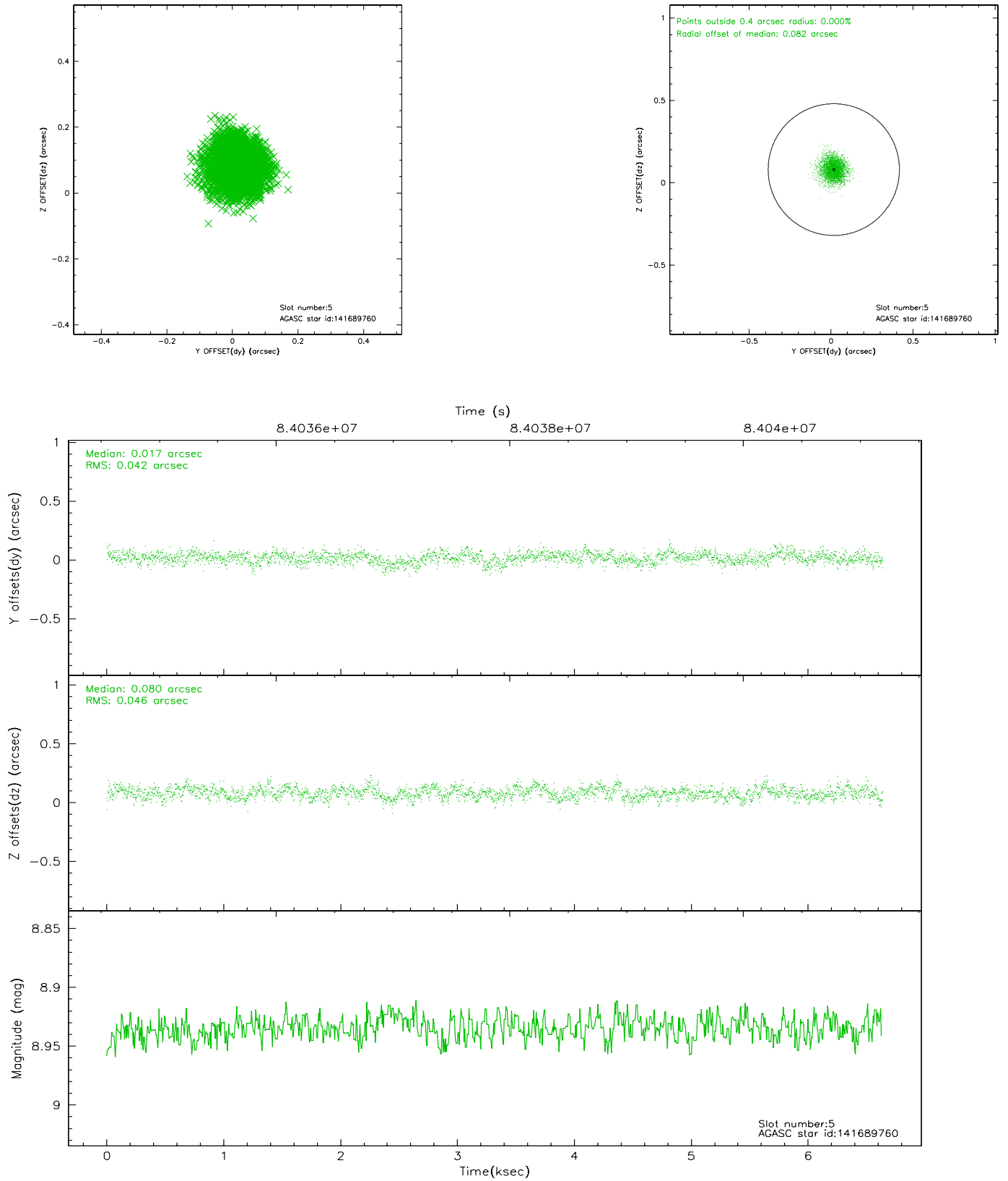
2.4.1 Slot 3



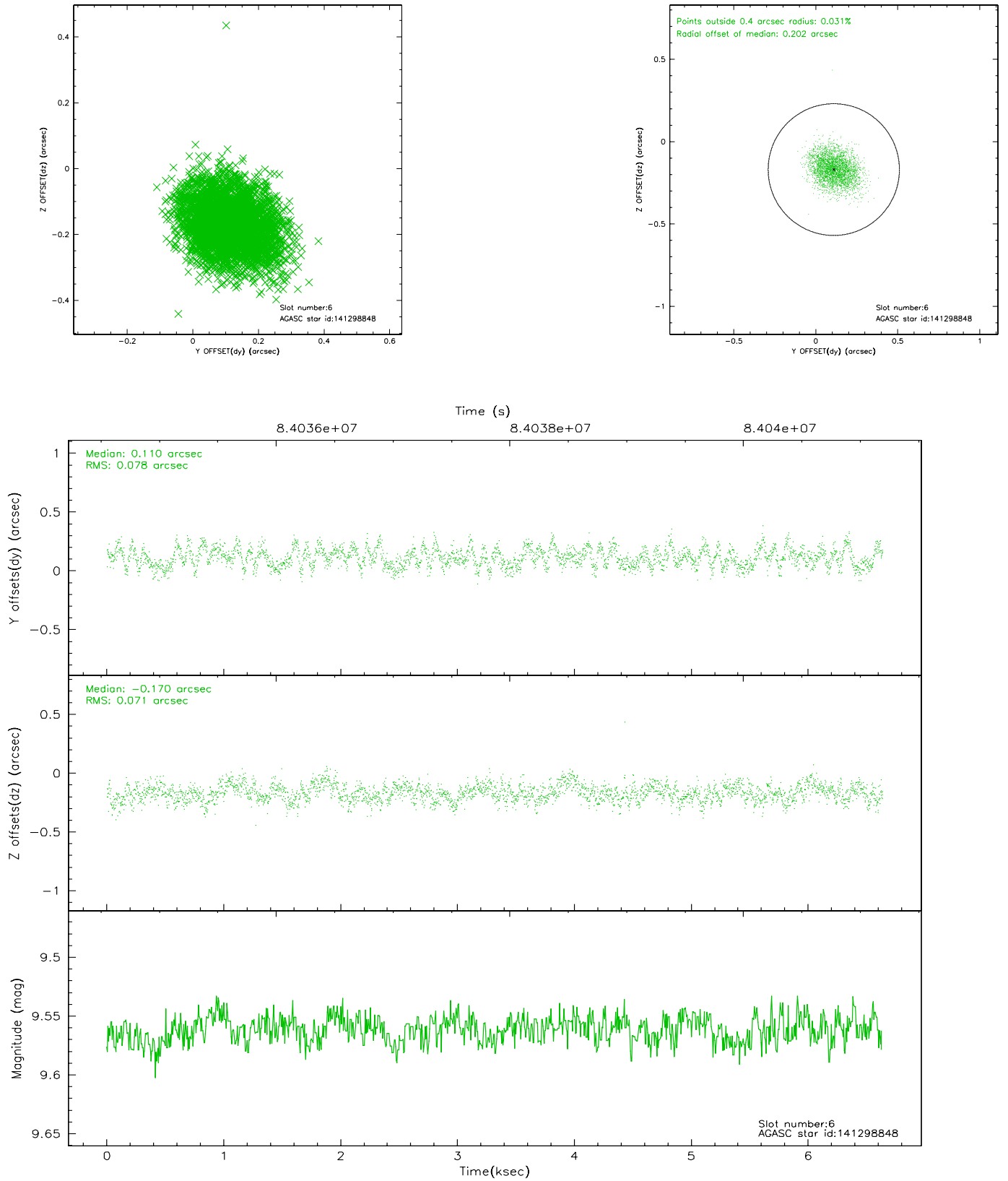
2.4.2 Slot 4



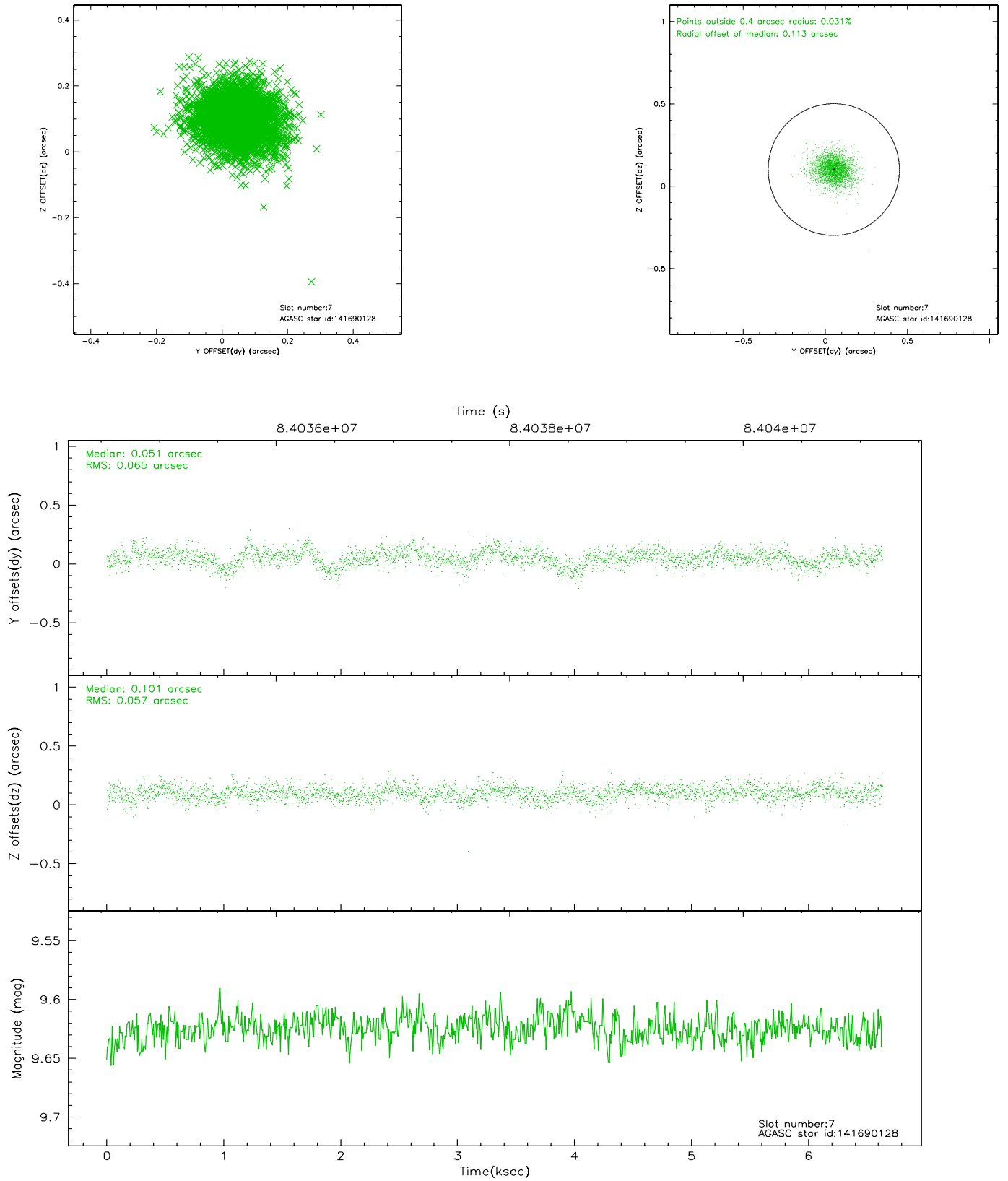
2.4.3 Slot 5



2.4.4 Slot 6

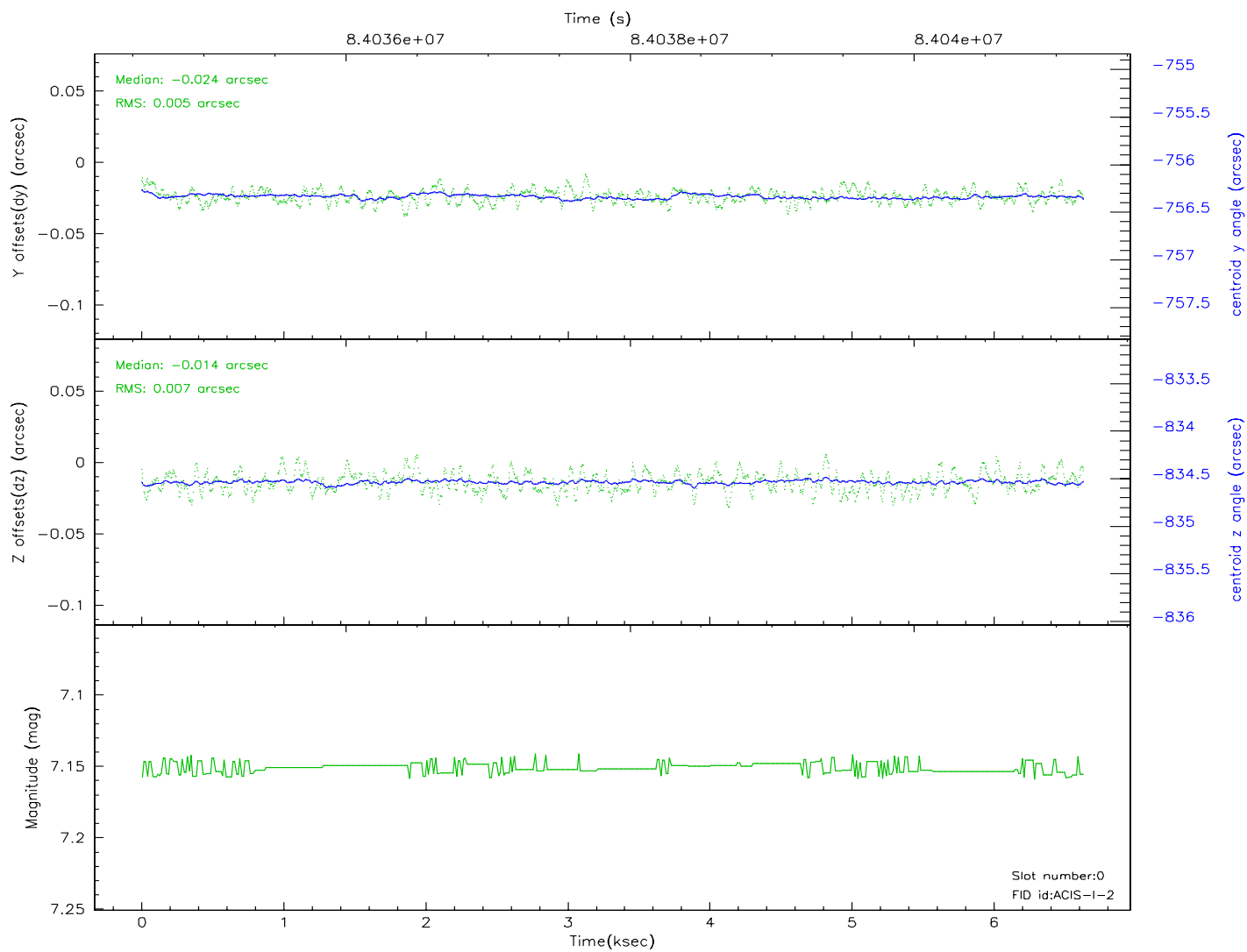
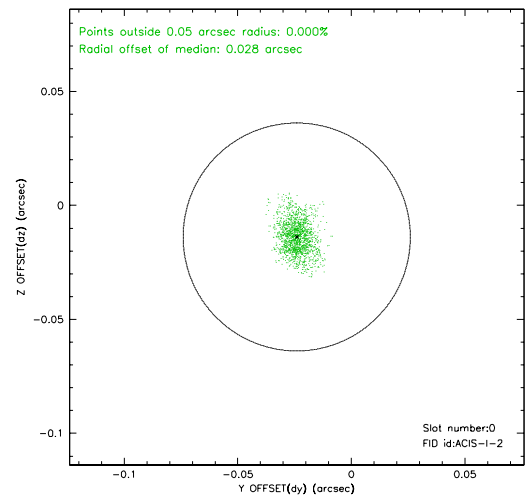
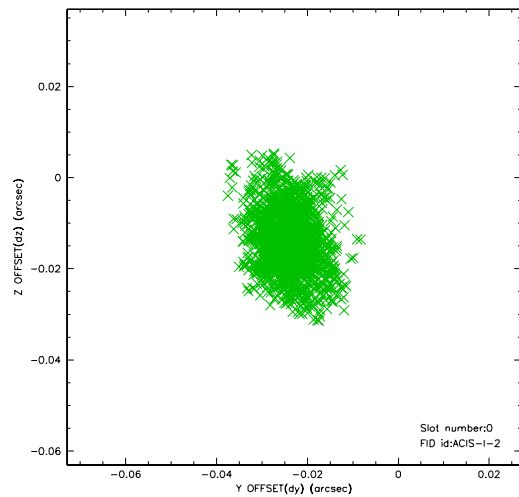


2.4.5 Slot 7

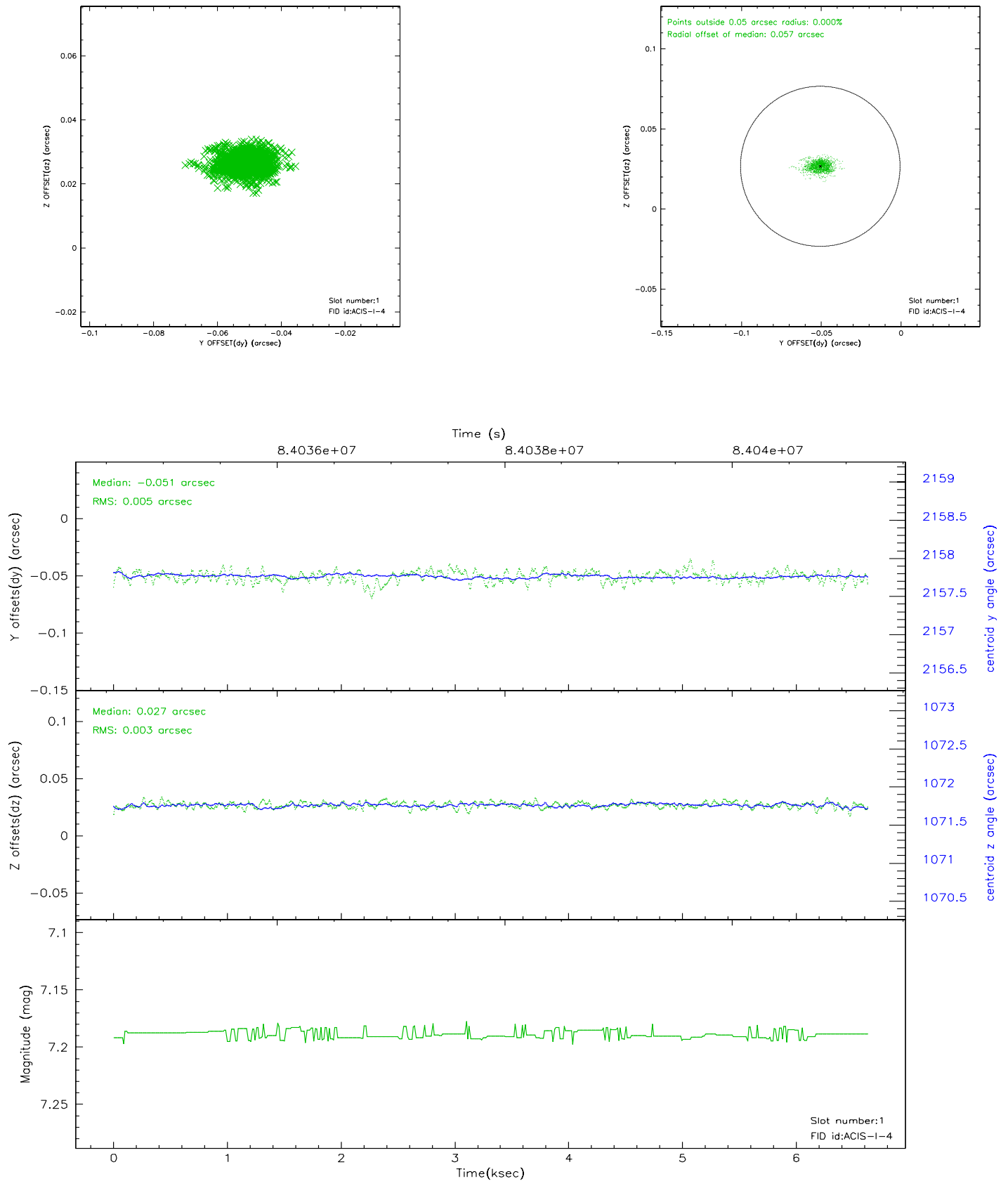


2.5 FID Slots

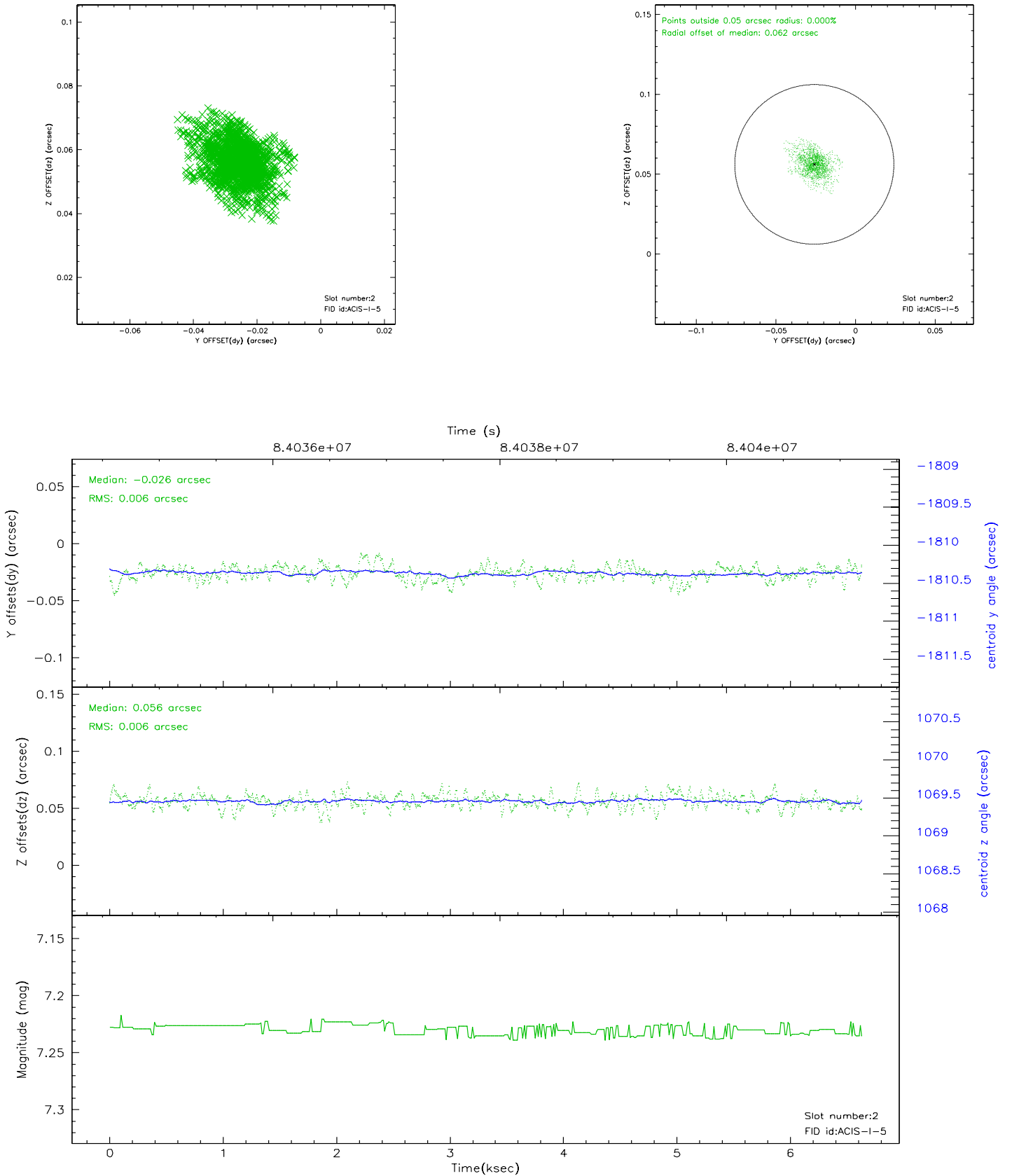
2.5.1 Slot 0



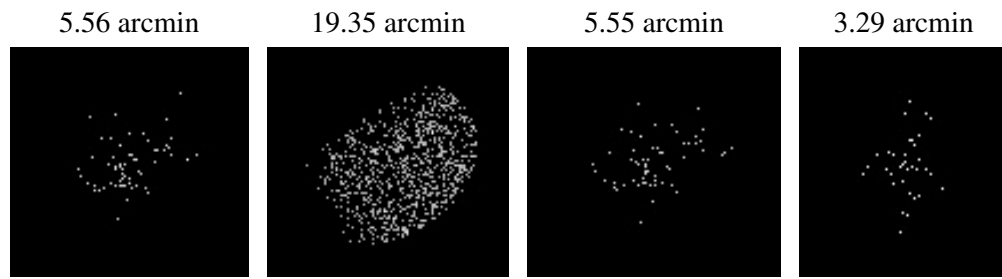
2.5.2 Slot 1



2.5.3 Slot 2



3 Point Sources



A Summary

A.1 Status

V&V Scientist	Jen Lauer
V&V Date (YYYY-MM-DD)	2007.06.06
V&V Edition	1
V&V Disposition and Status	OK
V&V Charge Time	6.627

A.2 Comments