

V&V Reference Report

L2 ASCDS Version : 8.4.5

Observation 933 - L2 Version 4
Chandra X-Ray Center

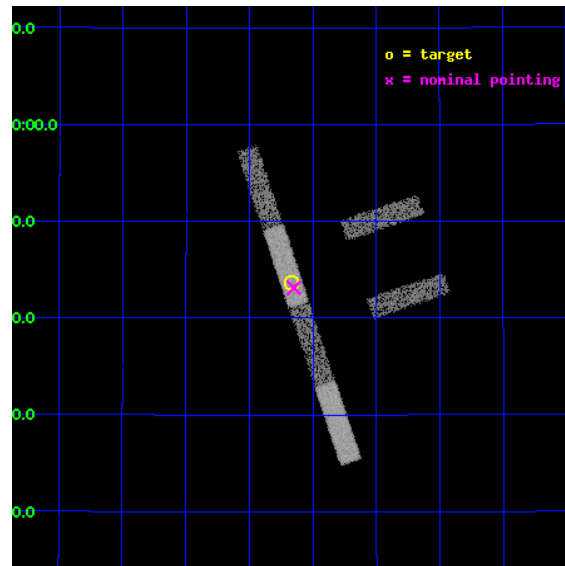
L2 Processing Date : Aug 30 2012

Contents

1	Front	2
2	OBI	3
2.1	OBI	3
2.1.1	Images	3
2.1.2	Bias	3
2.1.3	Parameters	4
2.1.4	Events	4
2.2	Compared Parameters	5
2.3	Aspect	6
2.4	Star Slots	9
2.4.1	Slot 3	9
2.4.2	Slot 4	10
2.4.3	Slot 5	11
2.4.4	Slot 6	12
2.4.5	Slot 7	13
2.5	FID Slots	14
2.5.1	Slot 0	14
2.5.2	Slot 1	15
2.5.3	Slot 2	16
A	Summary	17
A.1	Status	17
A.2	Comments	17

1 Front

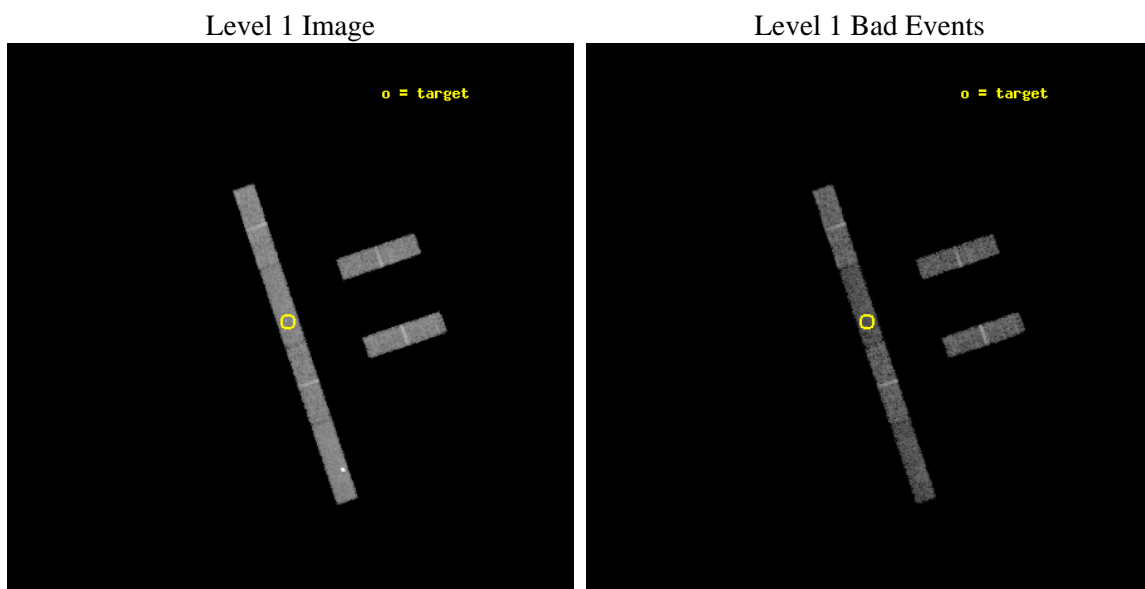
seq_num	900005	Sequence number
obs_id	933	Observation id
title	BRIGHT `BLANK FIELD`X-RAY SOURCES	Proposal title
observer	Dr. Martin Elvis	Principal investigator
object	1WGA J1340.1+2743	Source name
dtcycle	0	
cycle	P	events from which exps? Prim/Second/Both
ra_targ	205.042917	Observer's specified target RA [deg]
dec_targ	27.727472	Observer's specified target Dec [deg]
ra_nom	205.03749435555	Nominal RA [deg]
dec_nom	27.718799016085	Nominal Dec [deg]
roll_nom	251.43485735487	Nominal Roll [deg]
revision	4	Processing version of data
ontime	10151.899944991	Sum of GTIs [s]
livetime	9786.7646528517	Livetime [s]
ontime2	10151.899944991	Sum of GTIs [s]
ontime3	10151.899944991	Sum of GTIs [s]
ontime5	10151.899944991	Sum of GTIs [s]
ontime6	10151.899944991	Sum of GTIs [s]
ontime7	10151.899944991	Sum of GTIs [s]
ontime8	10151.899944991	Sum of GTIs [s]
l2events	26311	Number of level 2 events



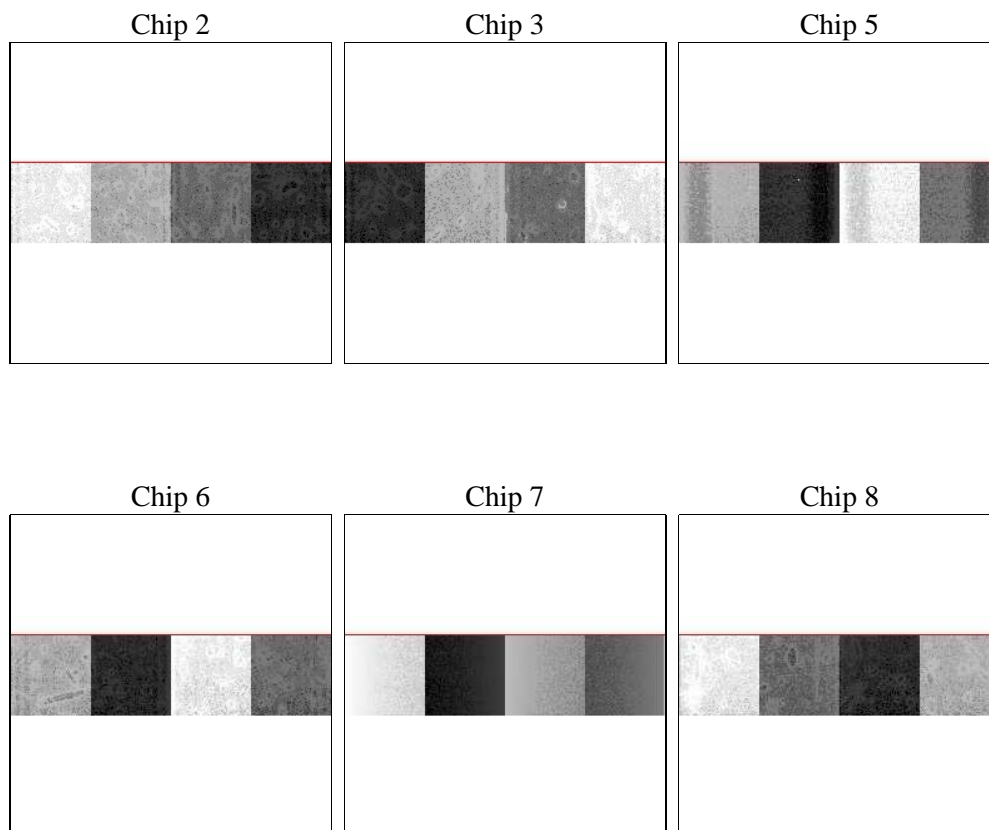
2 OBI

2.1 OBI

2.1.1 Images



2.1.2 Bias



2.1.3 Parameters

obi_num	0	Obi number	sched_exp_time	10000.000000	[s] Scheduled observation exposure time
ascdsver	8.4.5	Processing system revision	ontime	10151.899944991	Sum of GTIs [s]
caldsver	4.5.1.1	 	ontime2	10151.899944991	Sum of GTIs [s]
date	2012-08-30T04:09:14	Date and time of file creation	ontime3	10151.899944991	Sum of GTIs [s]
revision	4	Processing version of data	ontime5	10151.899944991	Sum of GTIs [s]
			ontime6	10151.899944991	Sum of GTIs [s]
			ontime7	10151.899944991	Sum of GTIs [s]
			ontime8	10151.899944991	Sum of GTIs [s]
			l1events	145545	Number of level 1 events

2.1.4 Events

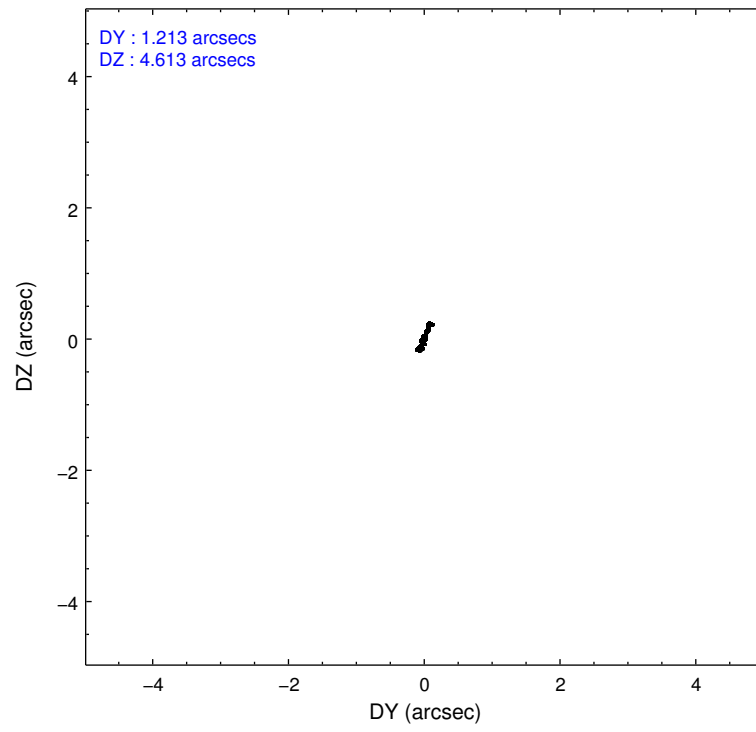
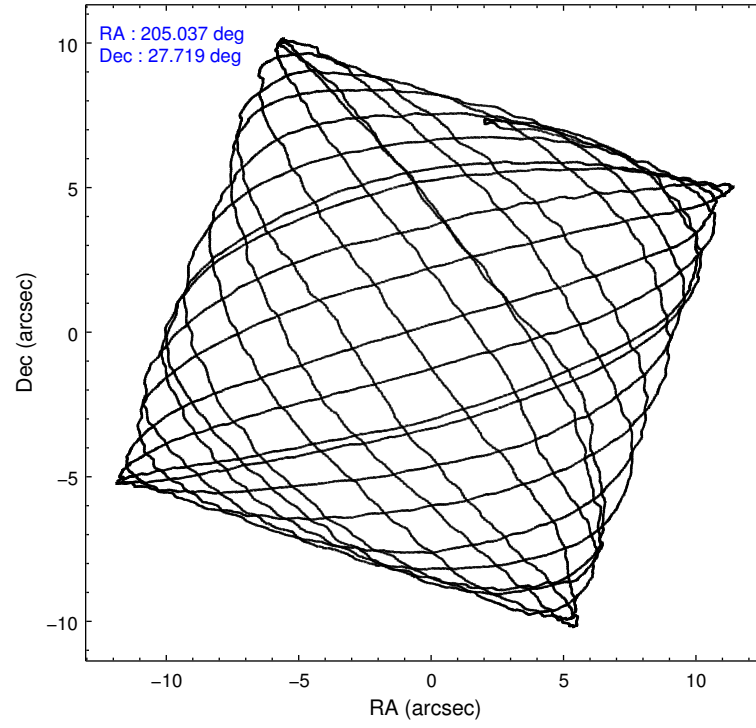
	ccd 2	ccd 3	ccd 5	ccd 6	ccd 7	ccd 8		ccd 2	ccd 3	ccd 5	ccd 6	ccd 7	ccd 8
level 1 events	22467	20546	31771	21386	21978	27397	grade 0 events	850	892	9812	873	1233	1489
rejected events	20317	18415	12916	19192	12472	22642		3%	4%	30%	4%	5%	5%
rejected %	90%	89%	40%	89%	56%	82%	grade 1 events	7	5	45	5	26	8
								0%	0%	0%	0%	0%	0%
							grade 2 events	418	377	3149	402	2006	952
								1%	1%	9%	1%	9%	3%
							grade 3 events	294	332	699	322	1068	619
								1%	1%	2%	1%	4%	2%
							grade 4 events	301	326	749	284	1001	547
								1%	1%	2%	1%	4%	1%
							grade 5 events	513	549	1872	654	2031	781
								2%	2%	5%	3%	9%	2%
							grade 6 events	365	336	5292	406	4619	1357
								1%	1%	16%	1%	21%	4%
							grade 7 events	19719	17729	10153	18440	9994	21644
								87%	86%	31%	86%	45%	79%

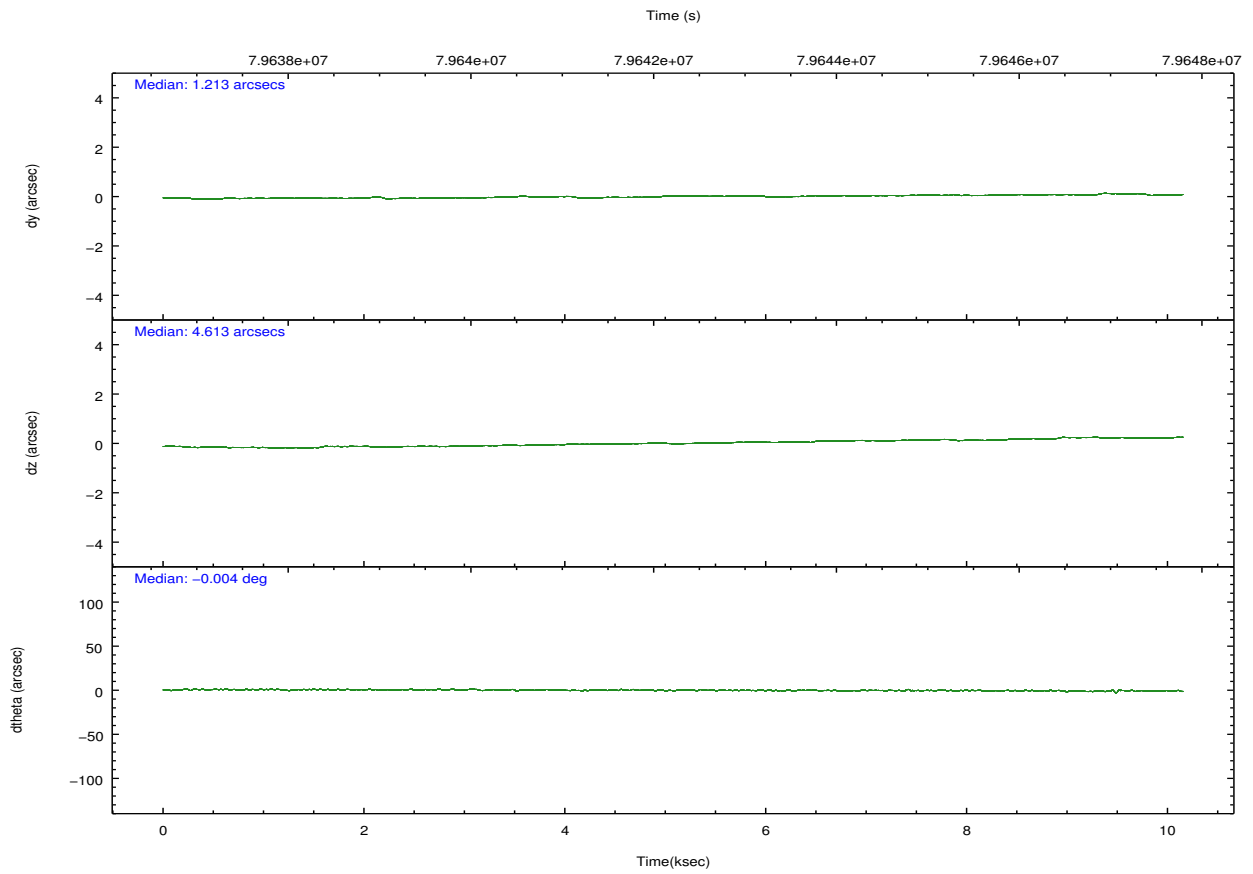
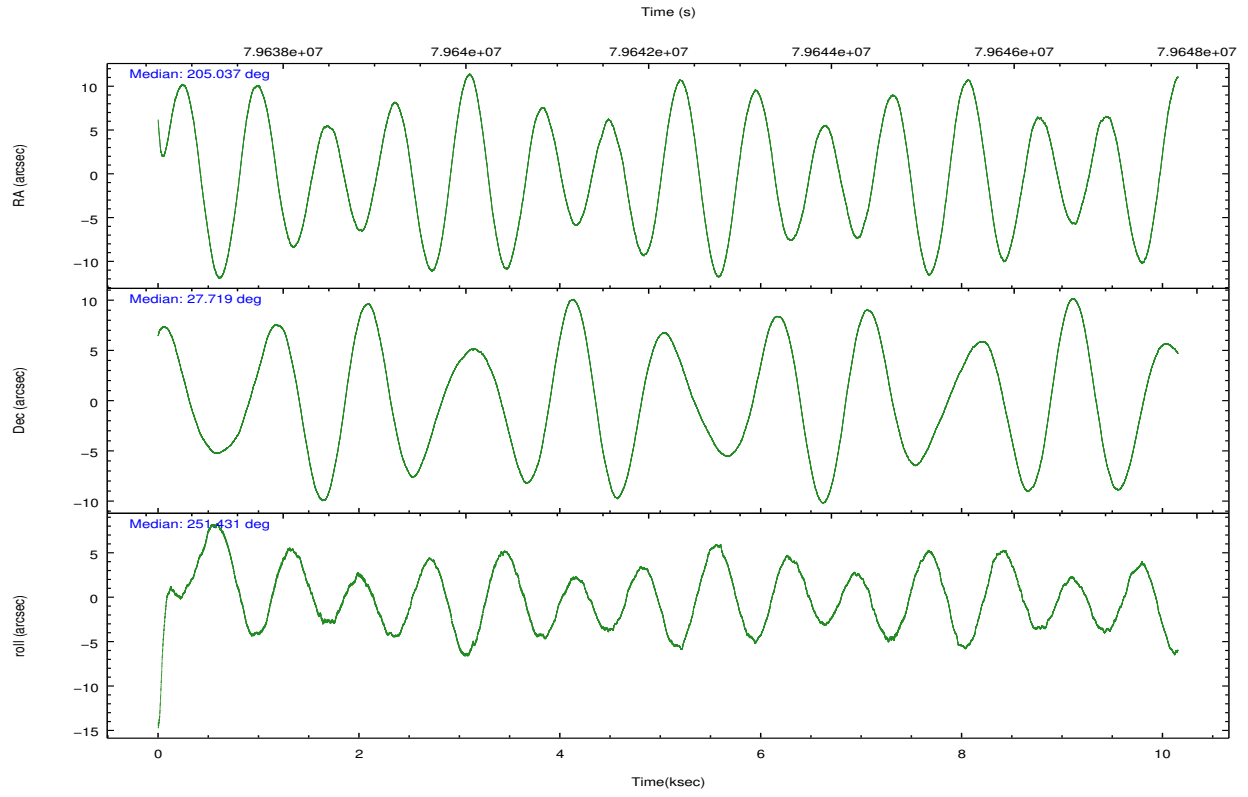
2.2 Compared Parameters

Parameter	Planned	Actual
Instrument	ACIS	ACIS
Detector	ACIS-235678	ACIS-235678
Grating	NONE	NONE
Data mode	VFAINT	VFAINT
Observation mode	POINTING	POINTING
[deg] Pointing RA	205.031173	205.0374943555521
[deg] Pointing Dec	27.745603	27.71879901608524
[deg] Pointing Roll	251.281188	251.434857354875
[mm] SIM focus pos	-0.684267	-0.6828225247311905
[mm] SIM defocus	0	0.001444936568705701
[mm] SIM translation stage pos	-190.132523	-190.1400660498719
[mm] SIM translation stage offset	0	0.00754346686406393
[s] Observation start time (MET)	79637290.184000	79636308.120684
Observation start date	2000-07-10T17:27:06	2000-07-10T17:11:48
[s] Observation end time (MET)	79647290.184000	79647887.546111
Observation end date	2000-07-10T20:13:46	2000-07-10T20:24:47
Read mode	TIMED	TIMED

Parameter	Planned	Actual
Obspar format version number	7	7
Obspar file type	PREDICTED	ACTUAL
Obspar update status	NONE	UPDATED
Number of optional ACIS chips dropped	0	0
On-chip summing requested	N	N
Subarray requested	CUSTOM	1/4
Subarray start row	385	385
Subarray row count	256	256
Alternating exposures requested	N	N
[s] Primary exposure time	0.000000	1.1

2.3 Aspect



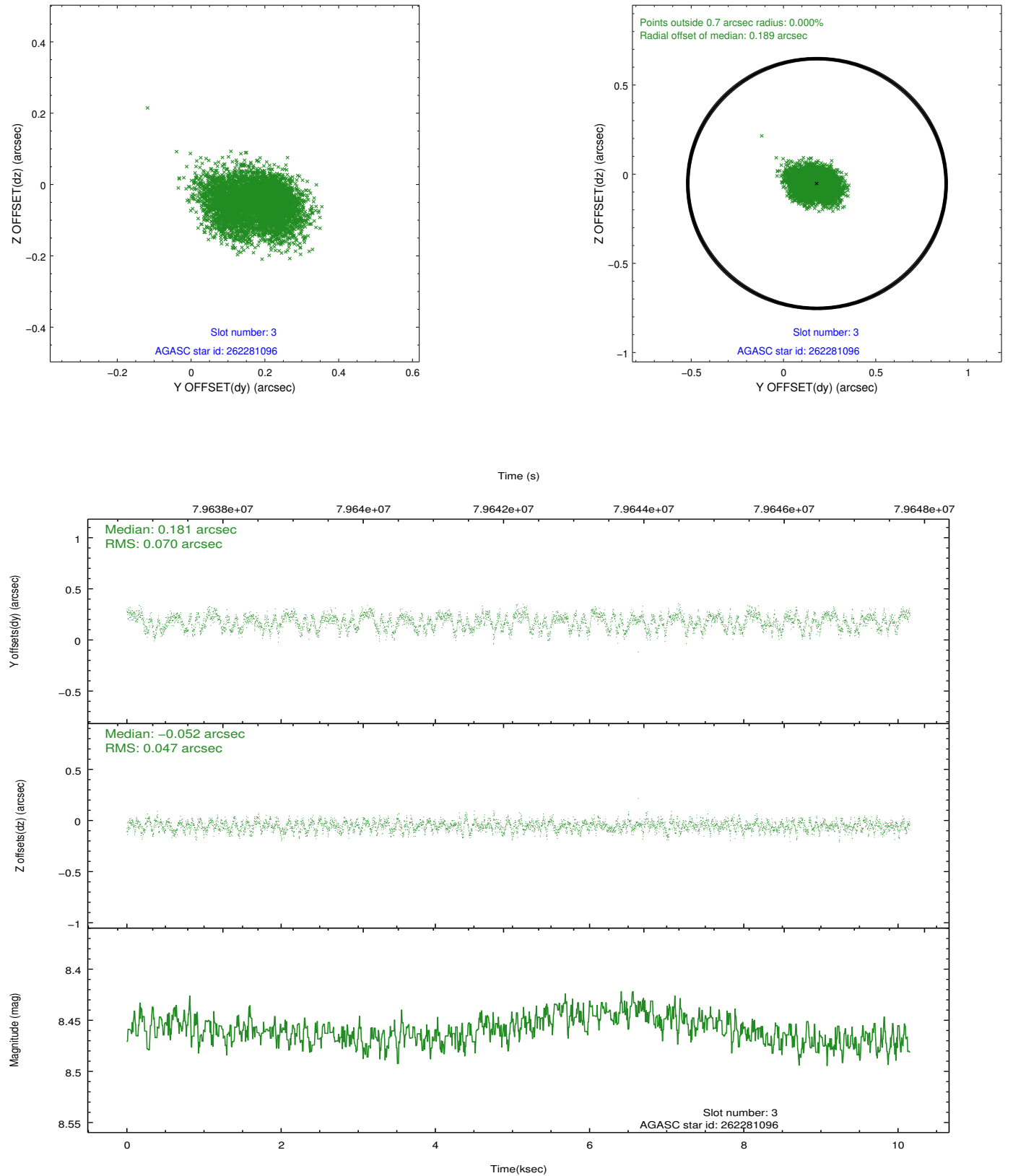


Slot Statistics

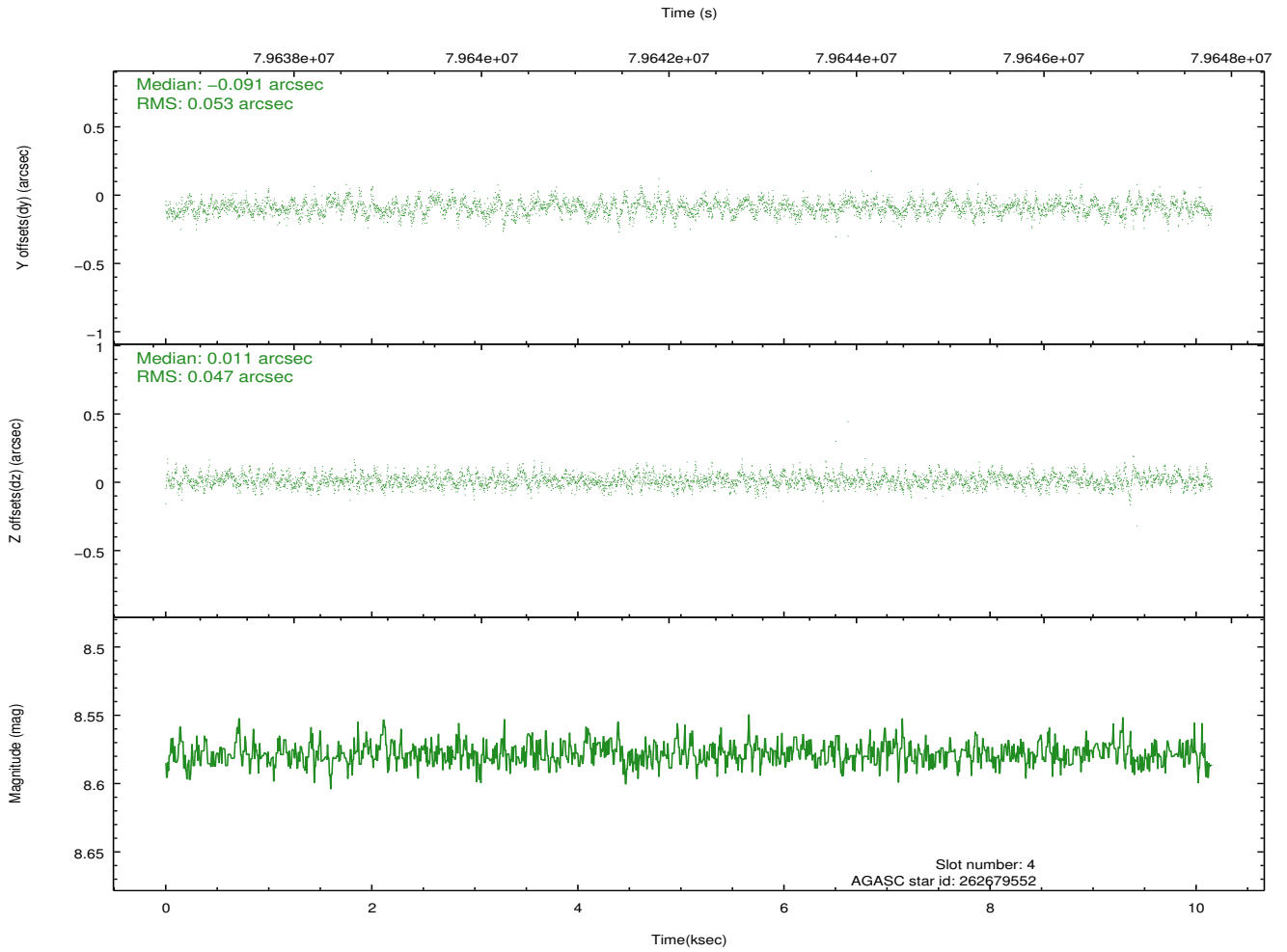
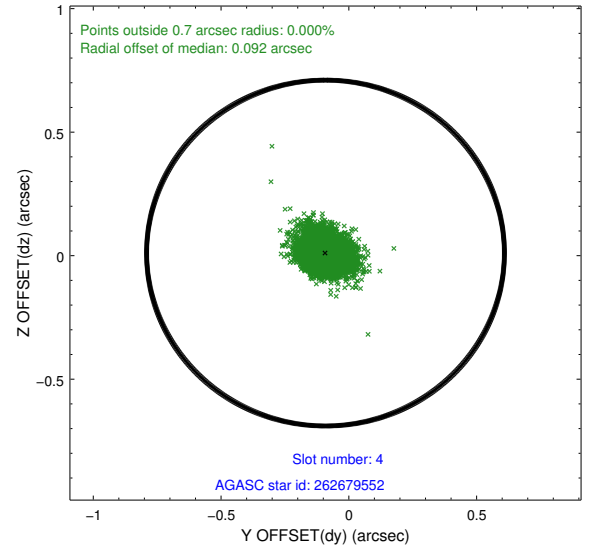
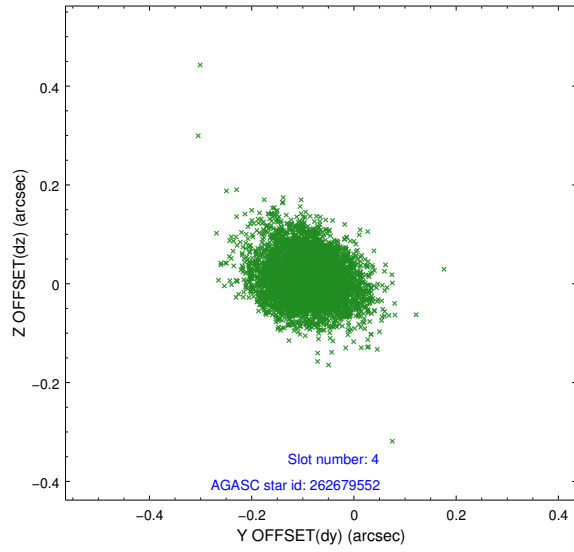
slot	status	id	mag	n_pts	med_dy	med_dz	dr1	dr2	ra	dec	mean_y	mean_z
0	FID	ACIS-S-2	7.11	2476	-0.026	-0.003	0.007	0.012	0.000000	0.000000	-753.83	-1725.73
1	FID	ACIS-S-4	7.21	2476	-0.011	0.013	0.006	0.011	0.000000	0.000000	2159.23	182.23
2	FID	ACIS-S-5	7.24	2477	0.007	-0.002	0.007	0.013	0.000000	0.000000	-1805.97	176.49
3	GUIDE	262281096	8.46	4954	0.181	-0.052	0.091	0.143	204.589131	27.287099	2015.10	-810.28
4	GUIDE	262679552	8.58	4954	-0.091	0.011	0.074	0.119	205.617019	28.202388	-2157.87	1231.15
5	GUIDE	262675088	9.42	4953	-0.104	-0.056	0.077	0.124	204.972671	28.348526	-1996.69	-871.90
6	GUIDE	262676040	9.16	4951	-0.032	0.076	0.072	0.125	205.599968	27.875331	-1027.68	1563.13
7	GUIDE	262276160	9.57	4951	0.048	0.022	0.105	0.170	205.646793	27.271277	980.19	2412.76

2.4 Star Slots

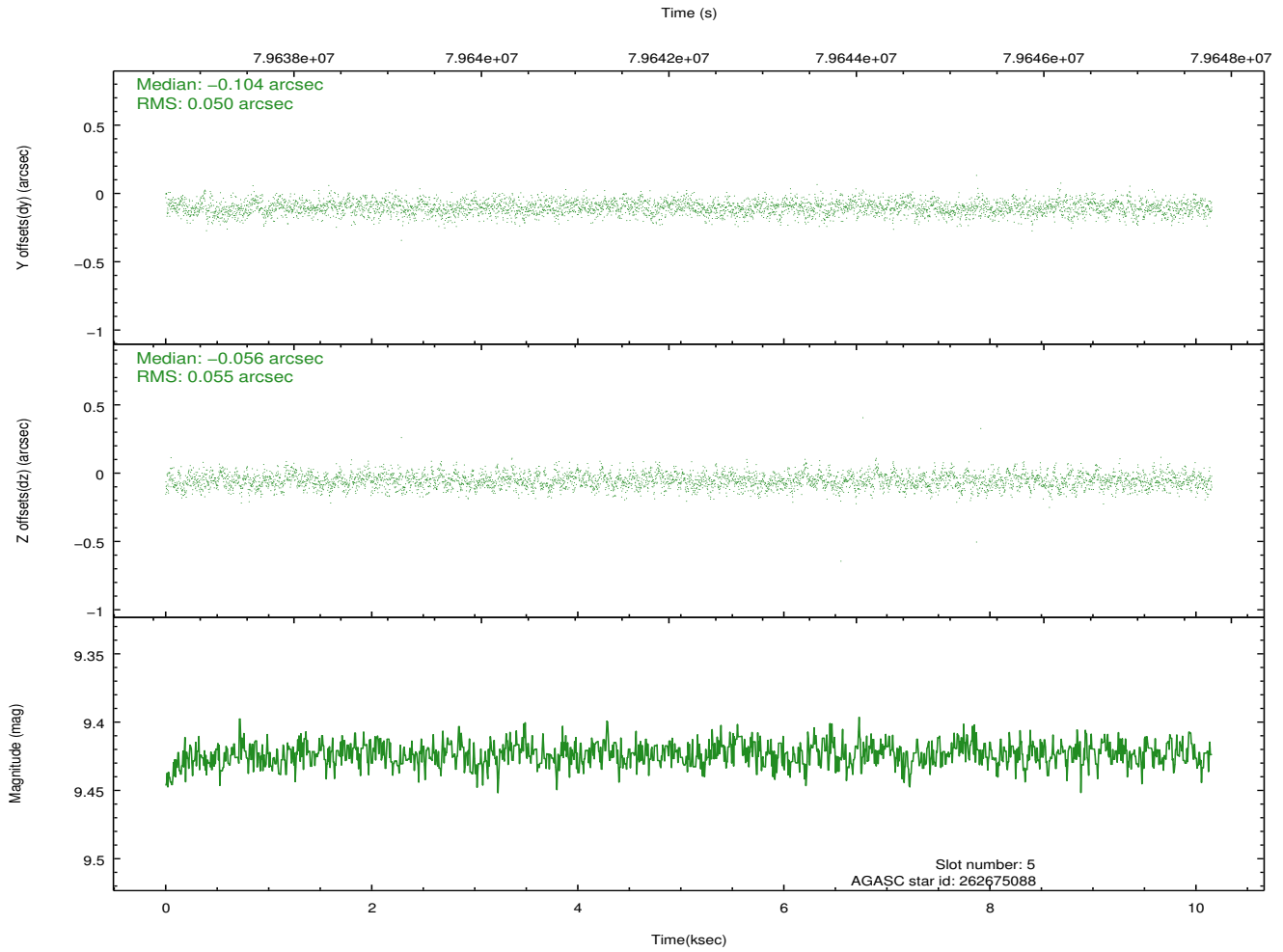
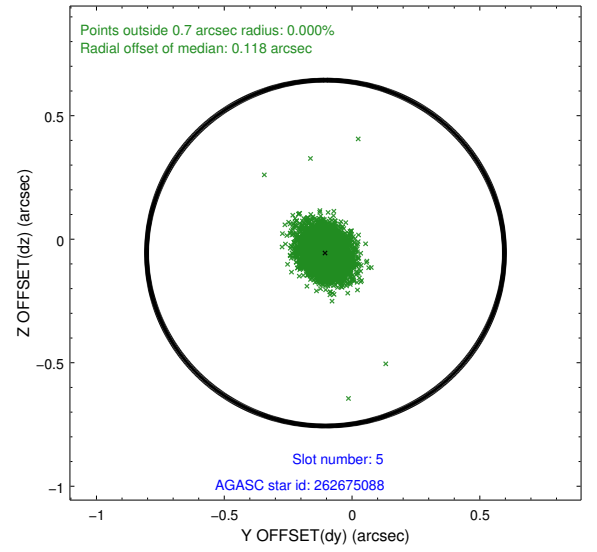
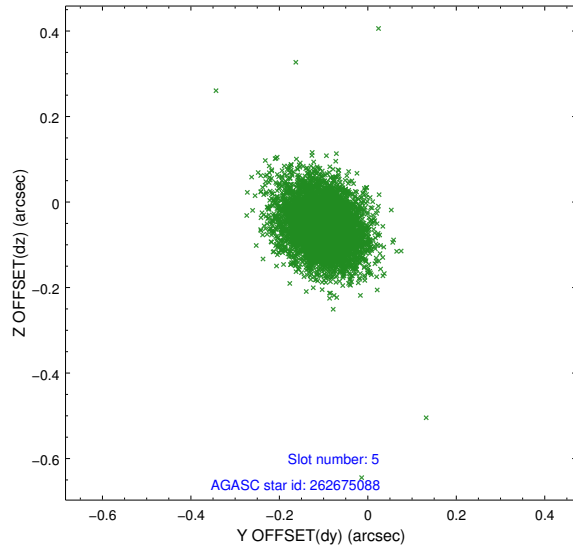
2.4.1 Slot 3



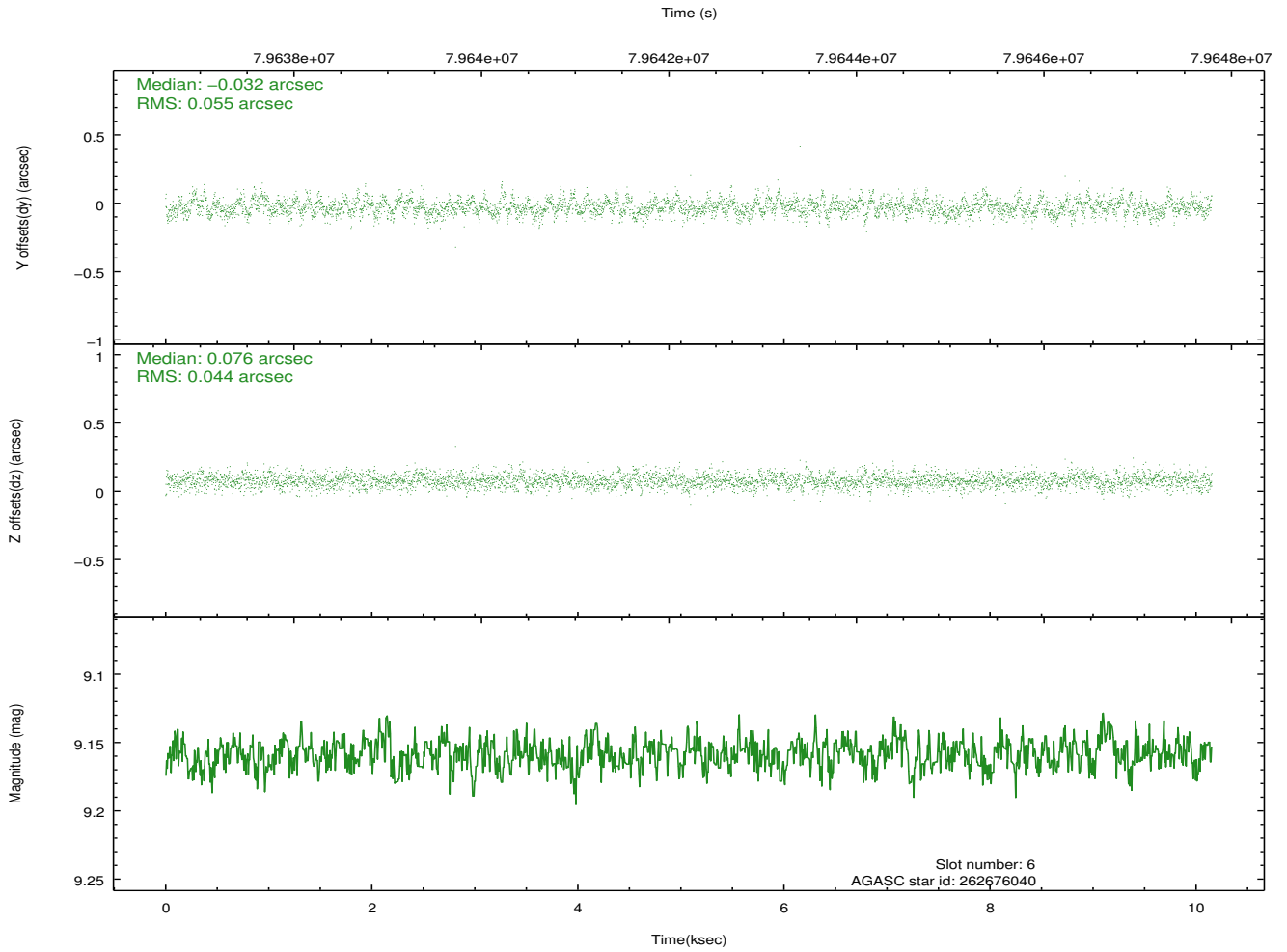
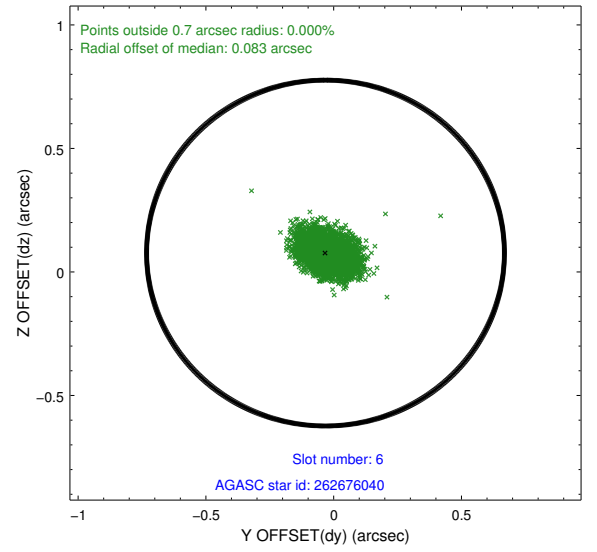
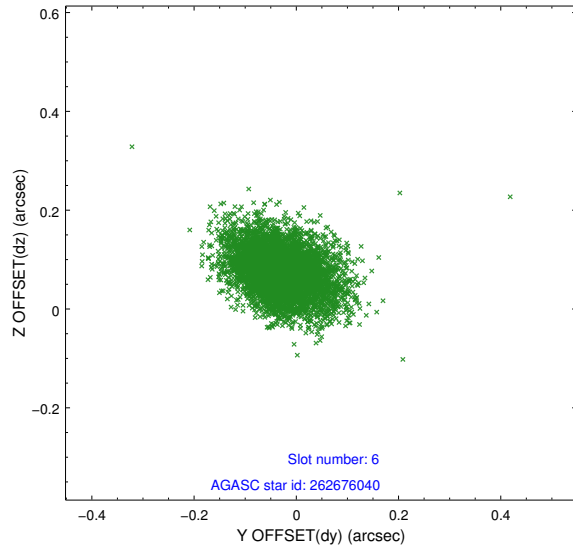
2.4.2 Slot 4



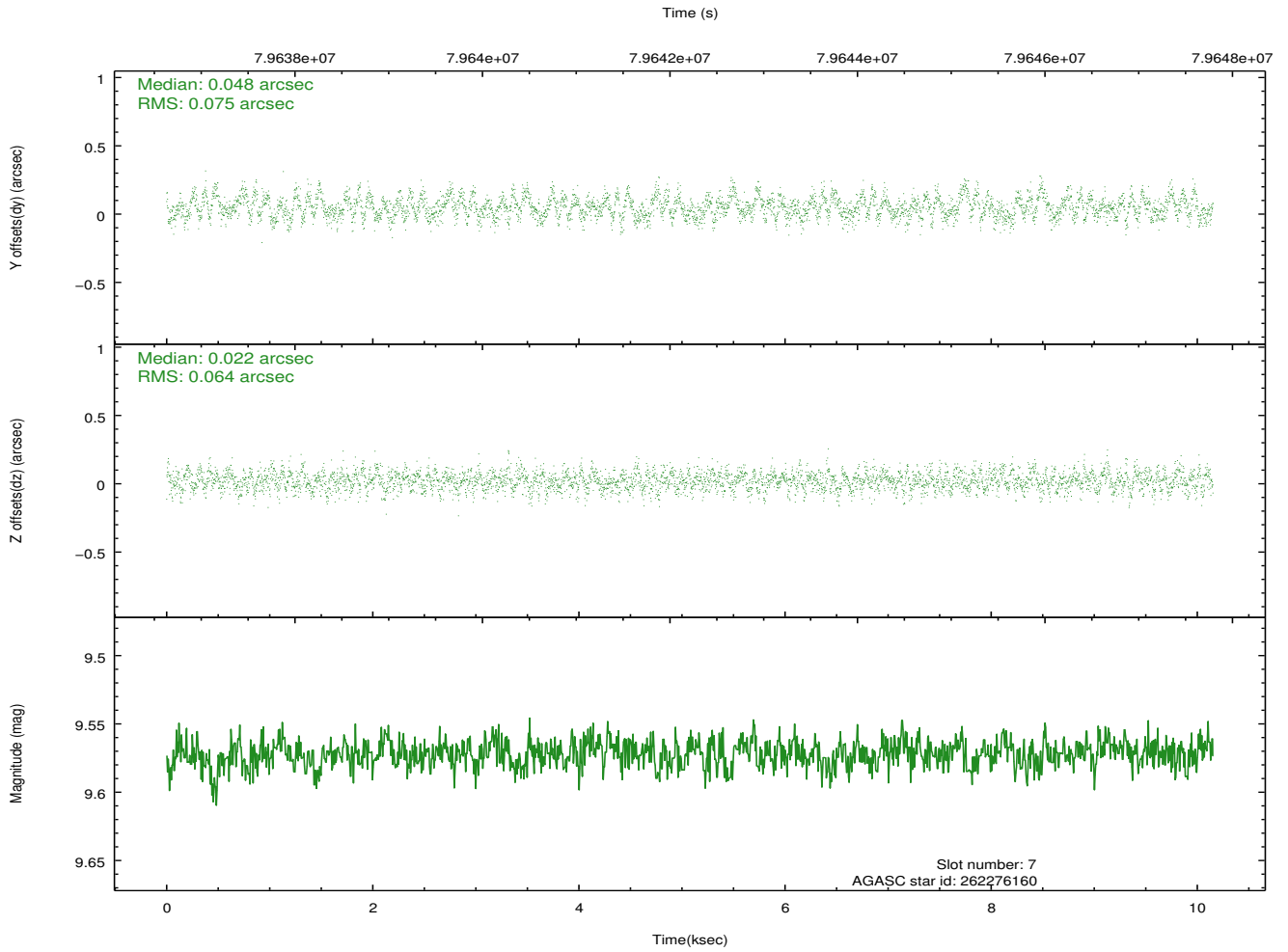
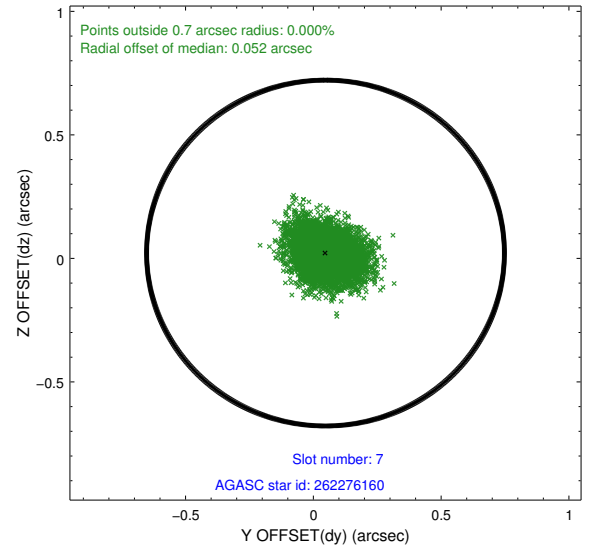
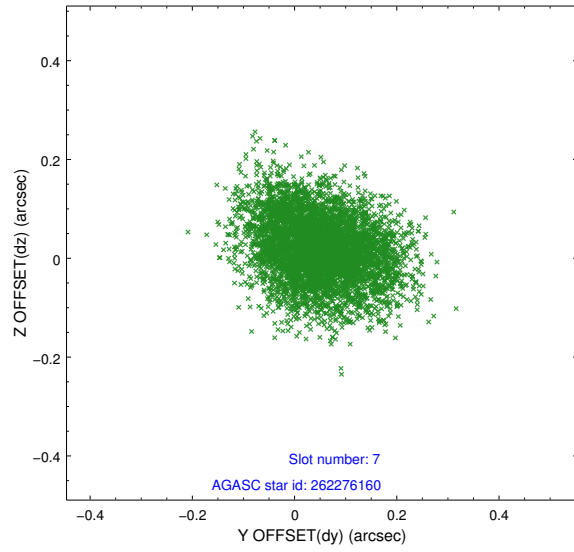
2.4.3 Slot 5



2.4.4 Slot 6

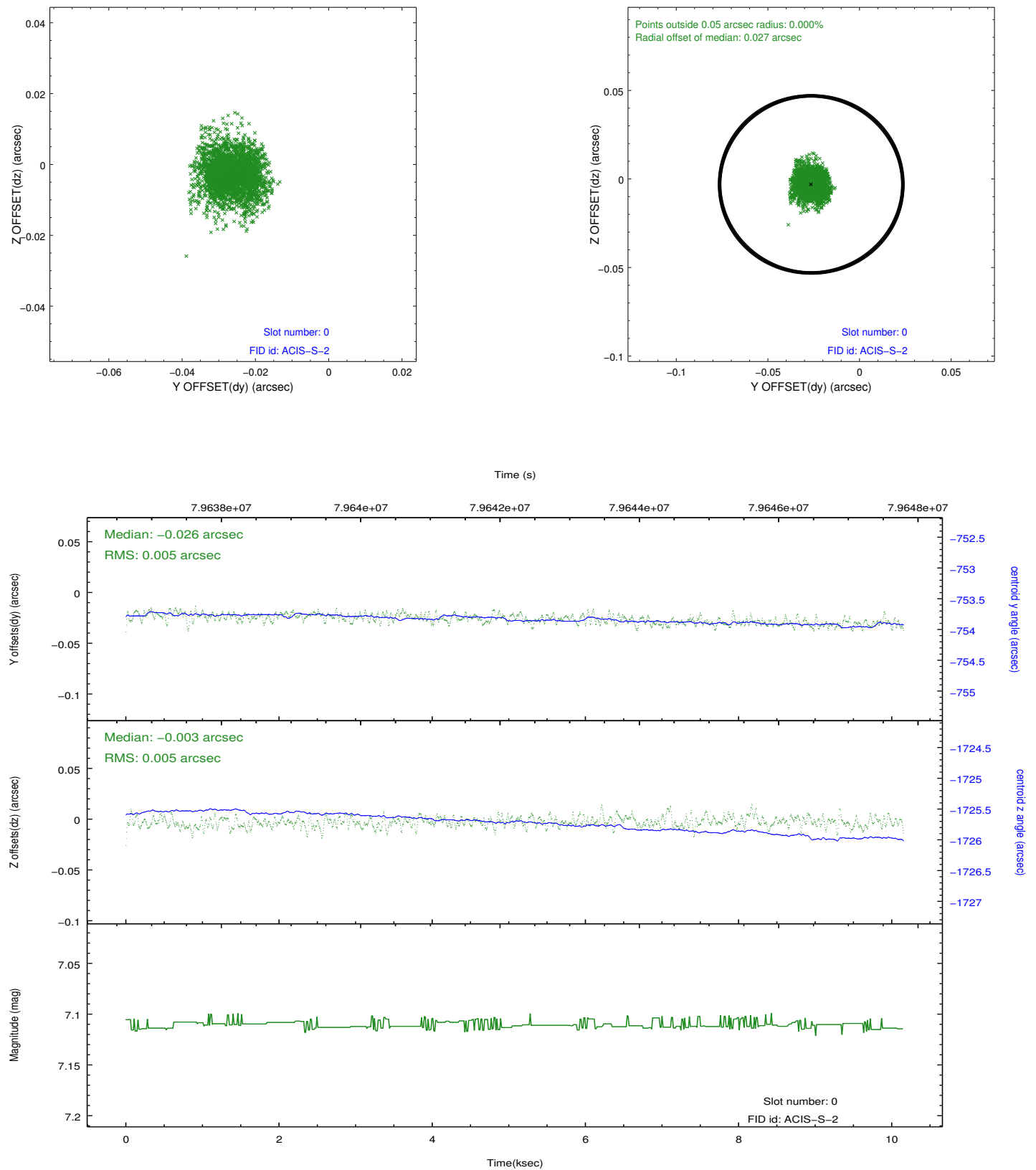


2.4.5 Slot 7

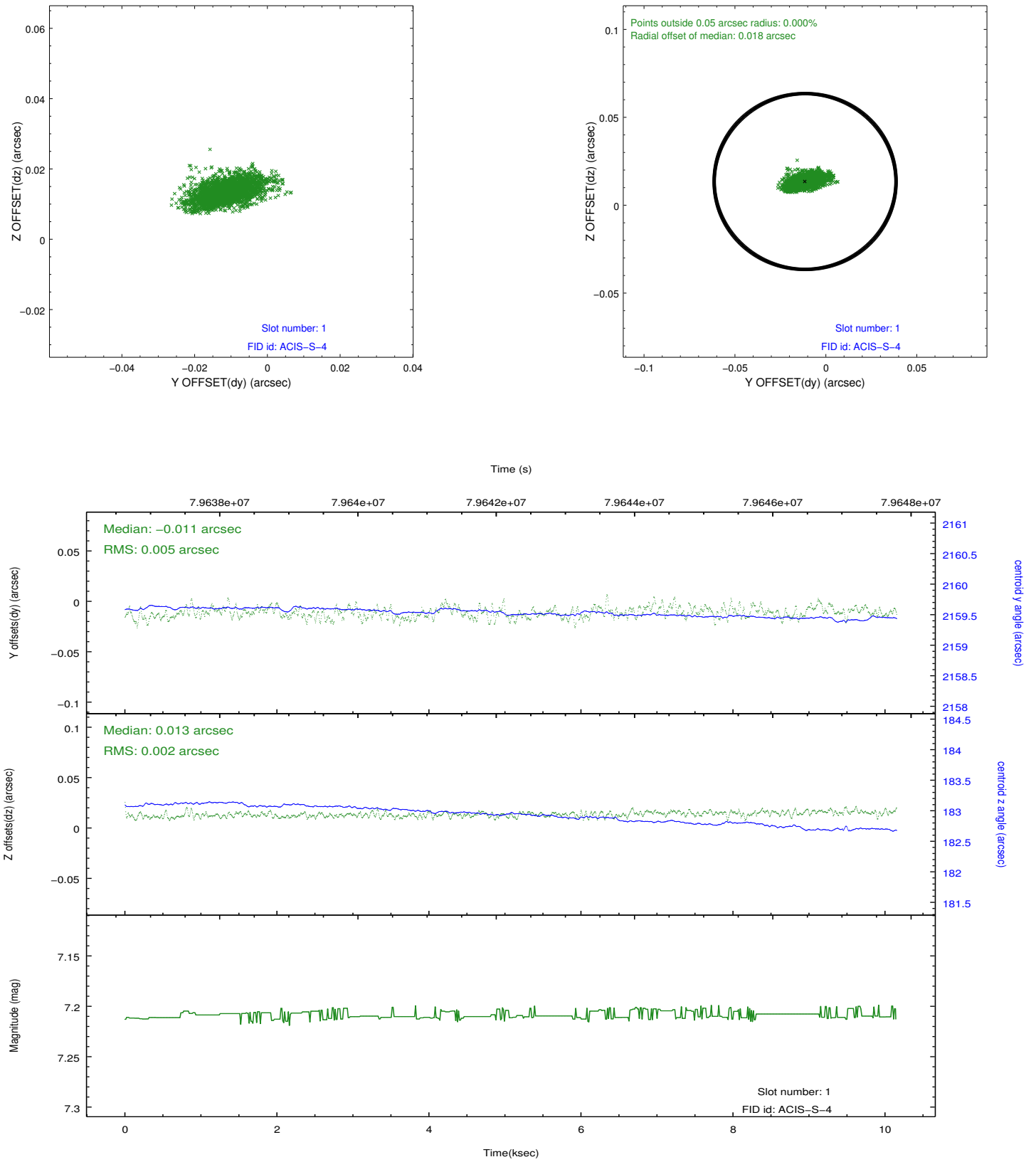


2.5 FID Slots

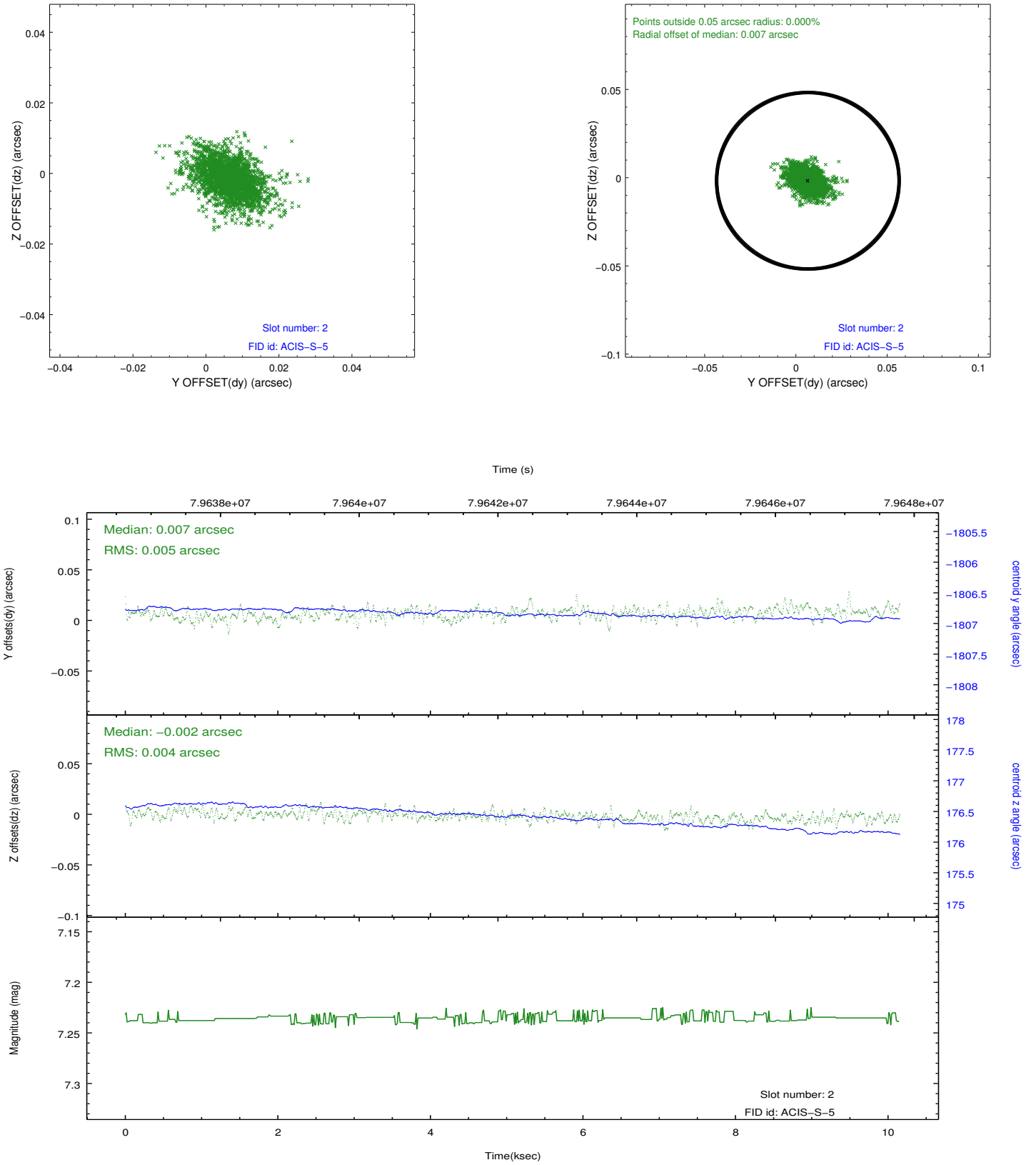
2.5.1 Slot 0



2.5.2 Slot 1



2.5.3 Slot 2



A Summary

A.1 Status

V&V Scientist	Beth Sundheim
V&V Date (YYYY-MM-DD)	2012.09.04
V&V Edition	1
V&V Disposition and Status	OK
V&V Charge Time	10.152

A.2 Comments