

V&V Reference Report

L2 ASCDS Version : 7.6.10

Observation 918 - L2 Version 001
Chandra X-Ray Center

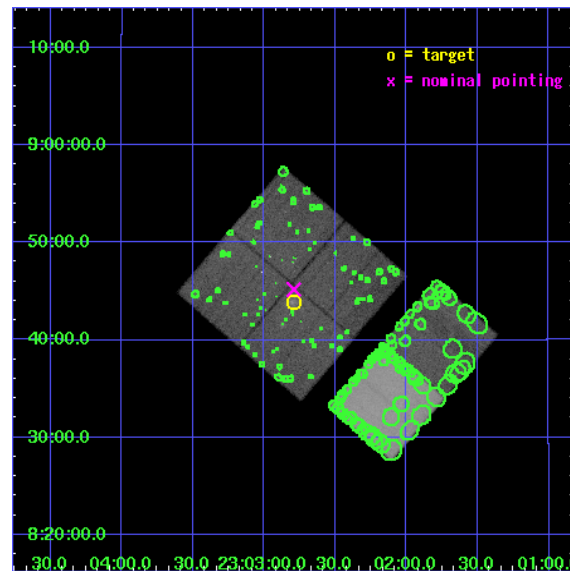
L2 Processing Date : Jun 2 2007

Contents

1	Front	2
2	OBI	3
2.1	OBI	3
2.1.1	Images	3
2.1.2	Bias	3
2.1.3	Parameters	4
2.1.4	Events	4
2.2	Compared Parameters	5
2.3	Aspect	6
2.4	Star Slots	9
2.4.1	Slot 3	9
2.4.2	Slot 4	10
2.4.3	Slot 5	11
2.4.4	Slot 6	12
2.4.5	Slot 7	13
2.5	FID Slots	14
2.5.1	Slot 0	14
2.5.2	Slot 1	15
2.5.3	Slot 2	16
3	Point Sources	17
A	Summary	18
A.1	Status	18
A.2	Comments	18

1 Front

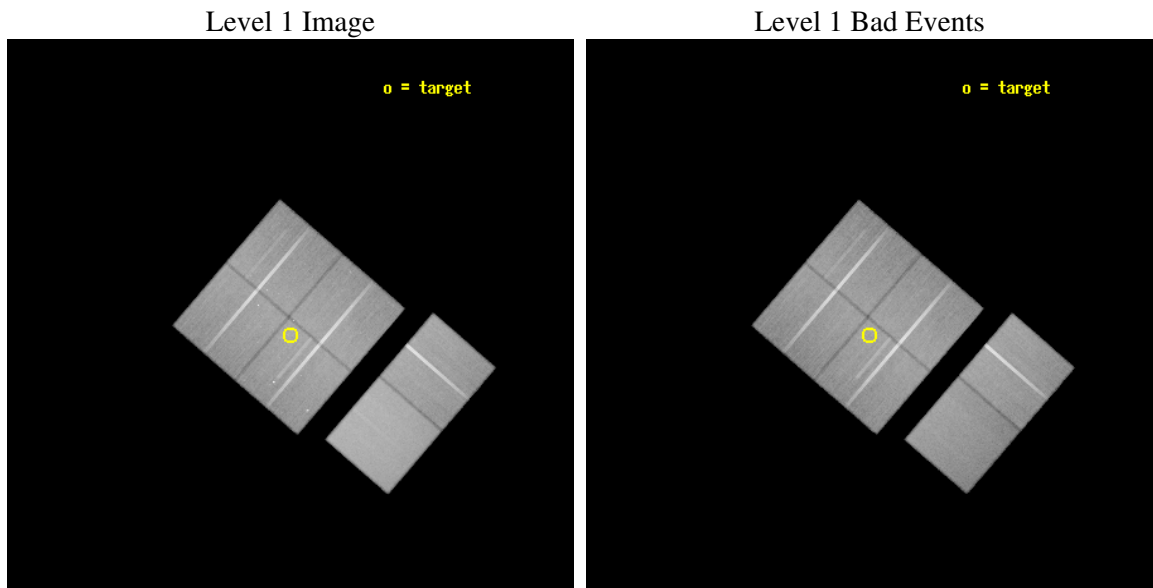
seq_num	800094
obs_id	918
title	THE CLUSTER X-RAY TEMPERATURE FUNCTION AT Z>0.6
observer	Dr. Harald Ebeling
object	CL J2302.8+0844
dtcycle	0
cycle	P
ra_targ	345.697917
dec_targ	8.731944
ra_nom	345.69771329729
dec_nom	8.7532236483444
roll_nom	130.76829646257
revision	3
ontime	109951.95913216
livetime	108559.68122051
ontime0	109955.2001024
ontime1	109951.95910224
ontime2	109951.95913216
ontime3	109951.95913216
ontime6	109955.2001024
ontime7	109955.2001024
l2events	685763



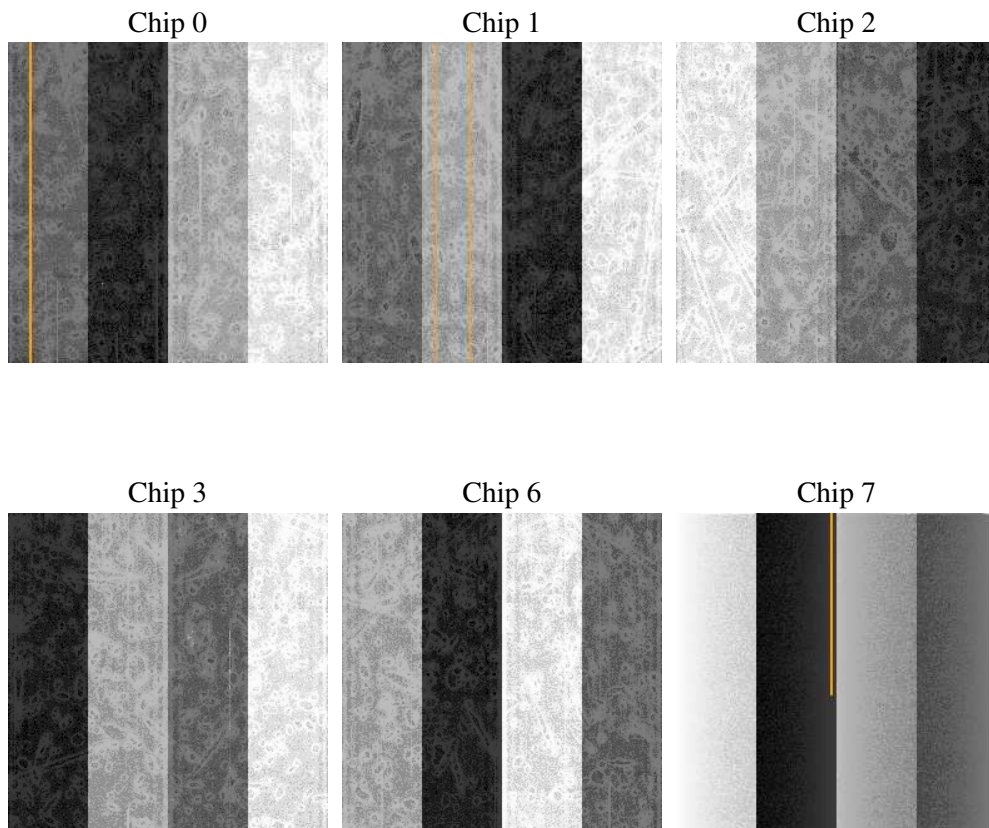
2 OBI

2.1 OBI

2.1.1 Images



2.1.2 Bias



2.1.3 Parameters

obi_num	0
ascdsver	7.6.10
caldbver	3.4.0
date	2007-06-02T08:04:54
revision	3

sched_exp_time	110000.000000
ontime	109951.95913216
ontime0	109955.2001024
ontime1	109951.95910224
ontime2	109951.95913216
ontime3	109951.95913216
ontime6	109955.2001024
ontime7	109955.2001024
l1events	3892246

2.1.4 Events

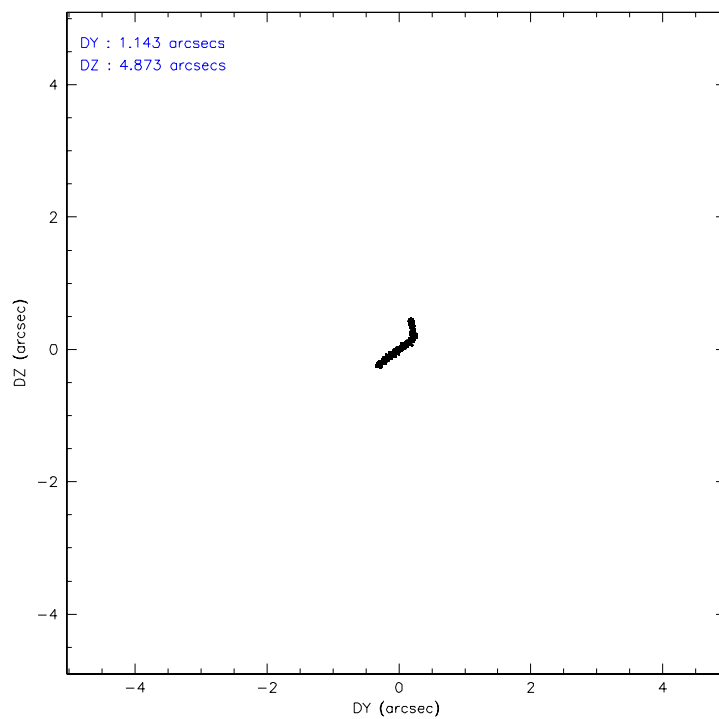
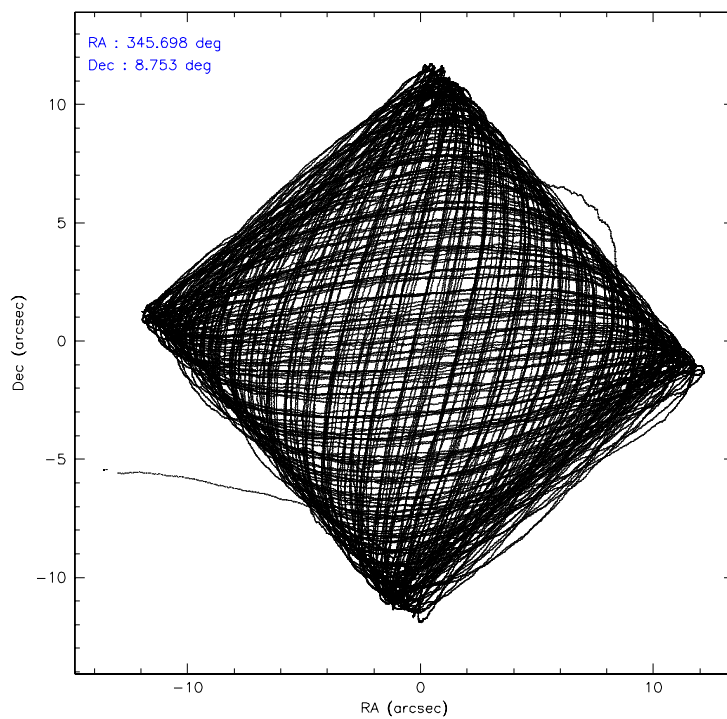
	ccd 0	ccd 1	ccd 2	ccd 3	ccd 6	ccd 7
level 1 events	582436	579908	624010	637741	650666	817485
rejected events	506011	501901	554637	561332	575897	445831
rejected %	86%	86%	88%	88%	88%	54%

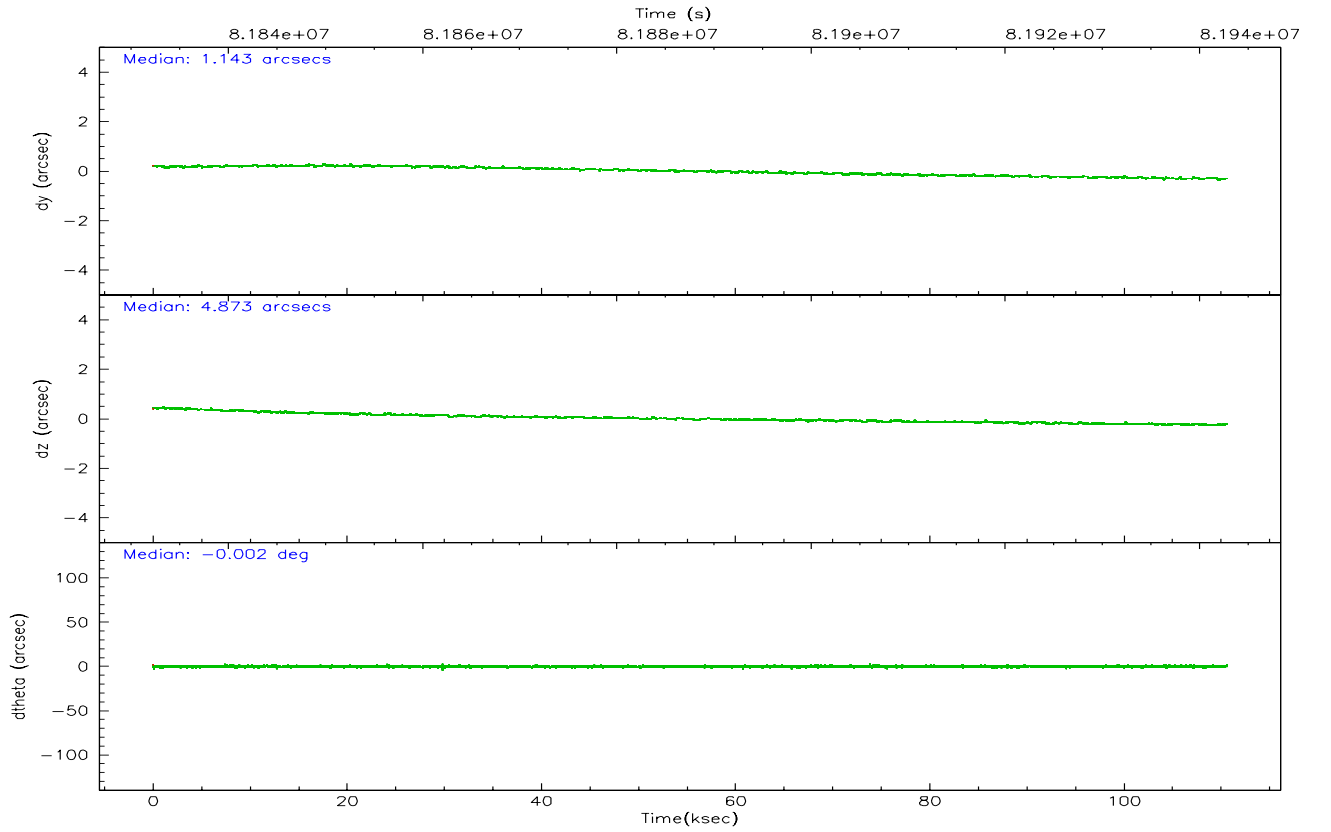
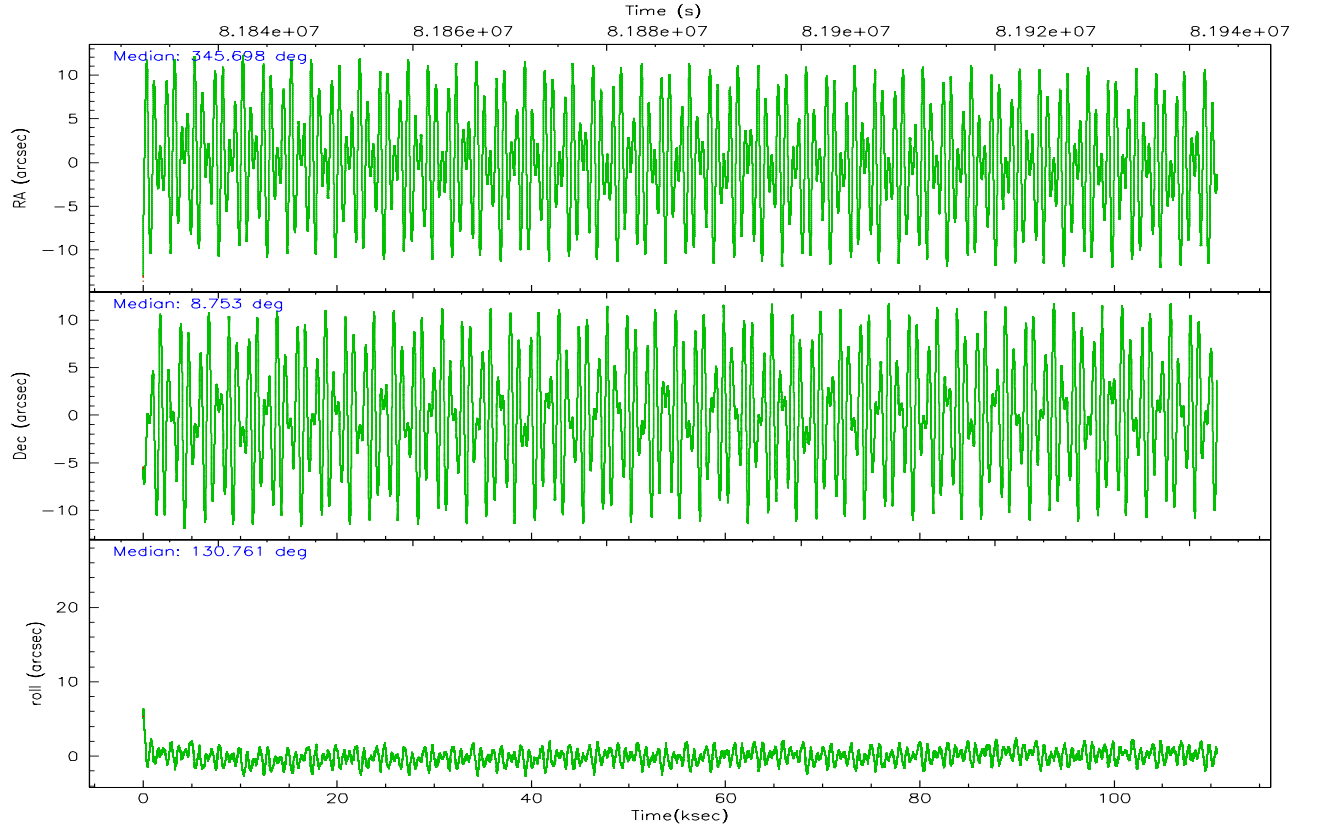
	ccd 0	ccd 1	ccd 2	ccd 3	ccd 6	ccd 7
grade 0 events	34401	33329	30034	36366	32039	37054
	5%	5%	4%	5%	4%	4%
grade 1 events	291	307	269	314	276	707
	0%	0%	0%	0%	0%	0%
grade 2 events	15227	15236	14687	14111	14525	71874
	2%	2%	2%	2%	2%	8%
grade 3 events	7443	7899	6458	6902	7197	33530
	1%	1%	1%	1%	1%	4%
grade 4 events	6788	7601	6546	6782	7030	33183
	1%	1%	1%	1%	1%	4%
grade 5 events	21116	22780	20150	22868	25706	73768
	3%	3%	3%	3%	3%	9%
grade 6 events	12569	13946	11650	12251	13983	196025
	2%	2%	1%	1%	2%	23%
grade 7 events	484601	478810	534216	538147	549910	371344
	83%	82%	85%	84%	84%	45%

2.2 Compared Parameters

Parameter	Planned	Actual	Parameter	Planned	Actual
Instrument	ACIS	ACIS	Obspar format version number	6	6
Detector	ACIS-012367	ACIS-012367	Obspar file type	PREDICTED	ACTUAL
Grating	NONE	NONE	Obspar update status	NONE	UPDATED
Data mode	FAINT	FAINT	Number of optional ACIS chips dropped	0	0
Observation mode	POINTING	POINTING	On-chip summing requested	N	N
Pointing RA	345.723986	345.6977132972872	Subarray requested	NONE	NONE
Pointing Dec	8.744061	8.753223648344362	Alternating exposures requested	N	N
Pointing Roll	130.555614	130.7682964625708	Primary exposure time	3.200000	3.2
SIM focus pos (mm)	-0.782348	-0.7809083437167272			
SIM defocus (mm)	0	0.001439871863259334			
SIM translation stage pos (mm)	-233.592463	-233.5874344608287			
SIM translation stage offset (mm)	0	-0.005018542100998502			
Observation start time	81832860.184000	81831589.65215901			
Observation start date	2000-08-05T03:19:56	2000-08-05T02:59:49			
Observation end time	81942860.184000	81943792.81883501			
Observation end date	2000-08-06T09:53:16	2000-08-06T10:09:52			
Read mode	TIMED	TIMED			

2.3 Aspect



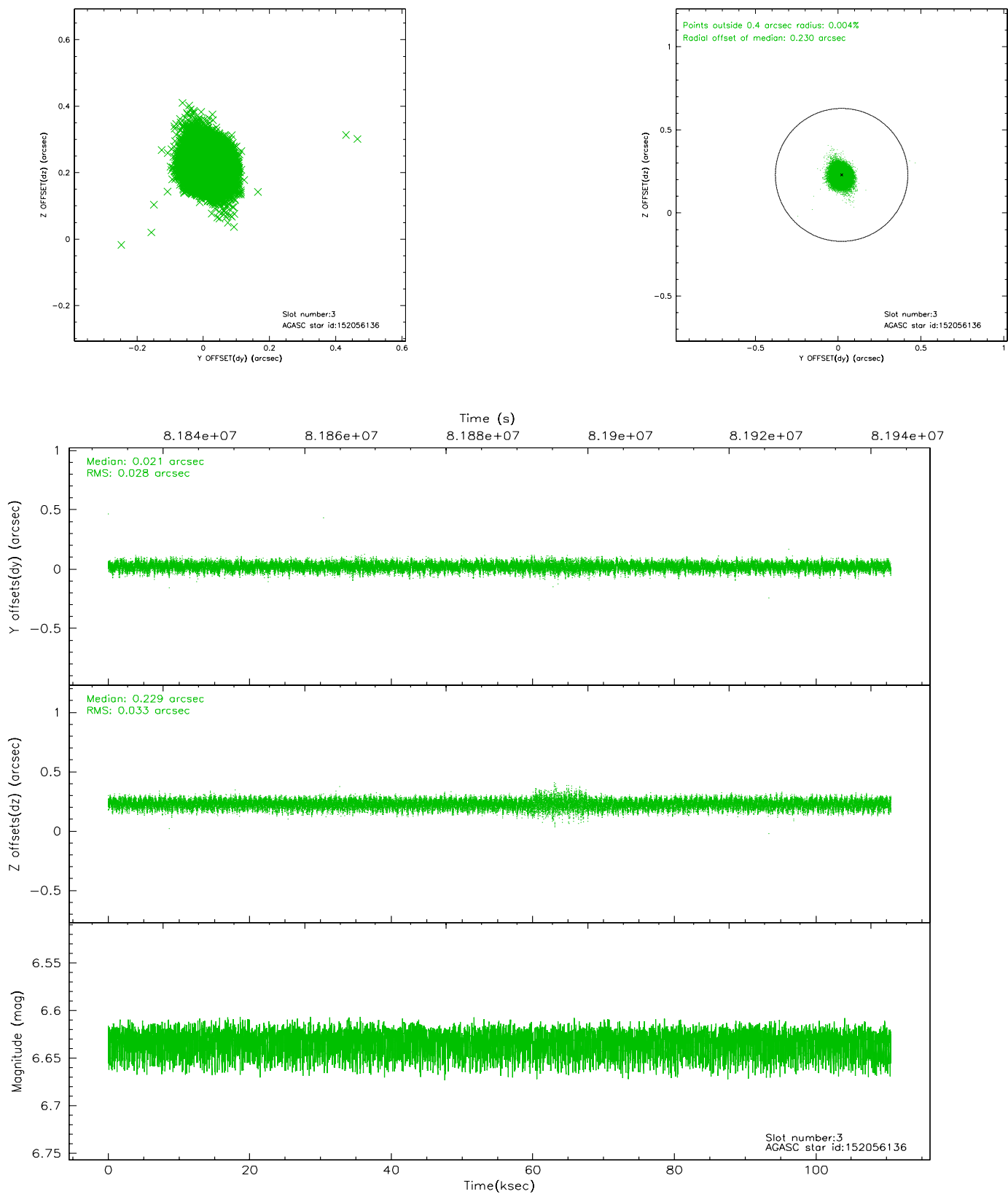


Slot Statistics

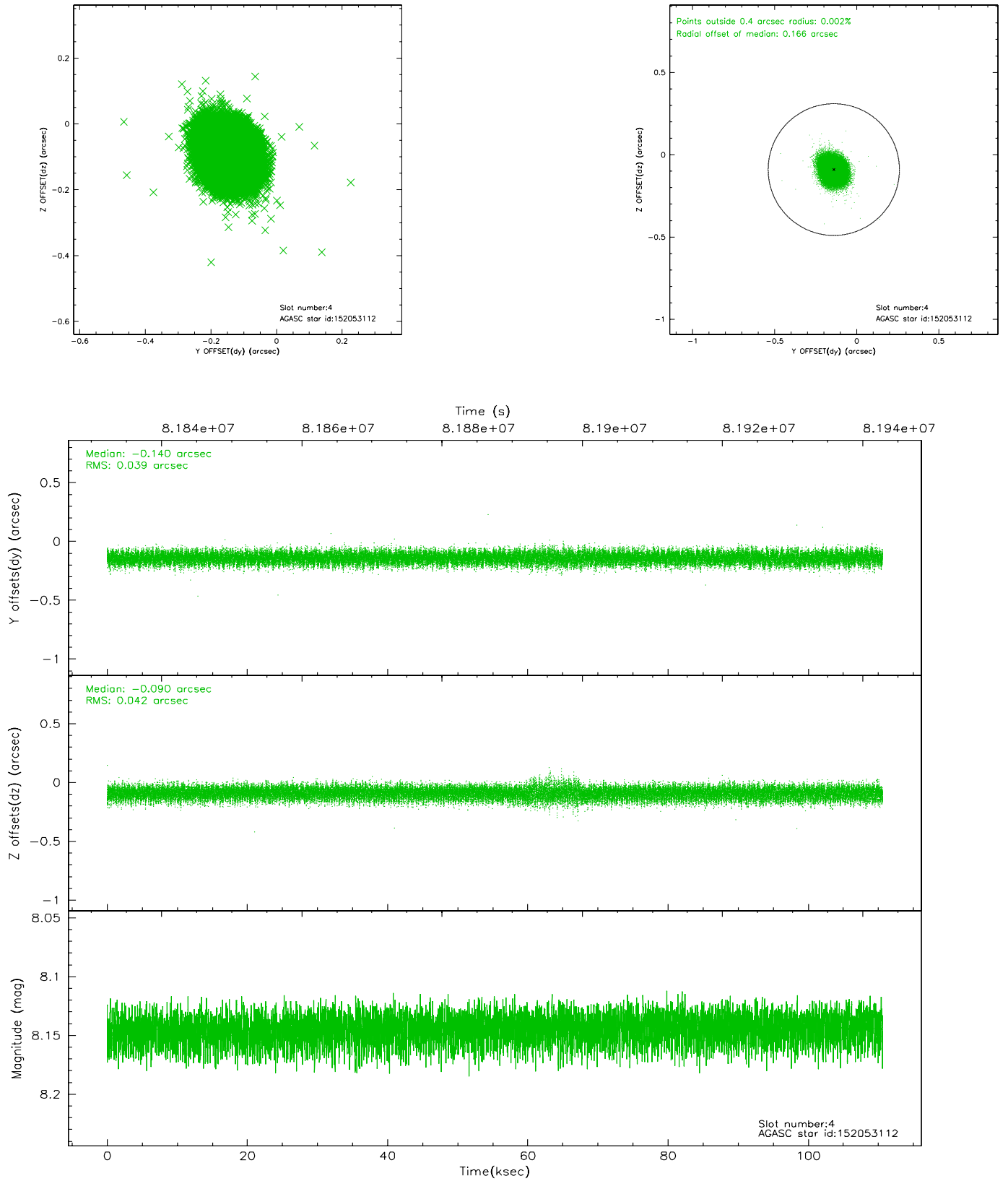
slot	status	id	mag	n_pts	med_dy	med_dz	dr1	dr2	ra	dec	mean_y	mean_z
0	FID	ACIS-I-2	7.15	26976	-0.019	-0.008	0.009	0.016	0.000000	0.000000	-755.48	-834.61
1	FID	ACIS-I-4	7.19	26980	-0.075	0.023	0.006	0.010	0.000000	0.000000	2158.56	1071.65
2	FID	ACIS-I-5	7.23	26976	-0.007	0.055	0.009	0.015	0.000000	0.000000	-1809.42	1069.42
3	GUIDE	152056136	6.63	53960	0.021	0.229	0.046	0.076	346.466795	8.896005	-1299.47	-2364.25
4	GUIDE	152053112	8.14	53960	-0.140	-0.090	0.061	0.098	345.154715	8.750450	1335.71	1523.37
5	GUIDE	152048440	8.52	53951	0.114	0.051	0.074	0.116	346.200519	9.070077	-208.10	-2050.54
6	GUIDE	152051576	8.86	53946	0.036	-0.085	0.066	0.109	345.475827	8.657019	336.75	874.84
7	GUIDE	152052088	8.99	53938	-0.030	-0.102	0.064	0.105	345.509667	8.677615	314.65	735.16

2.4 Star Slots

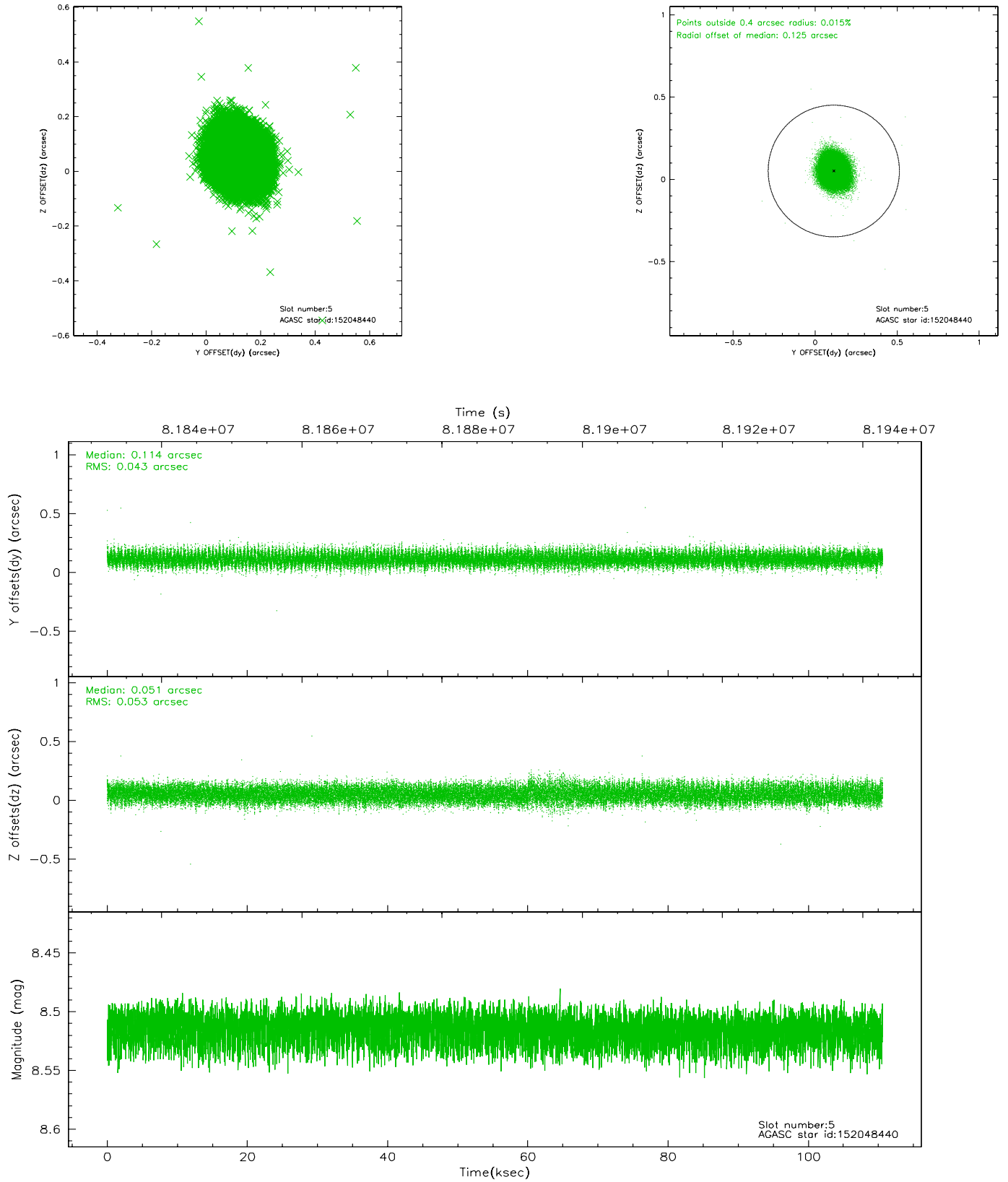
2.4.1 Slot 3



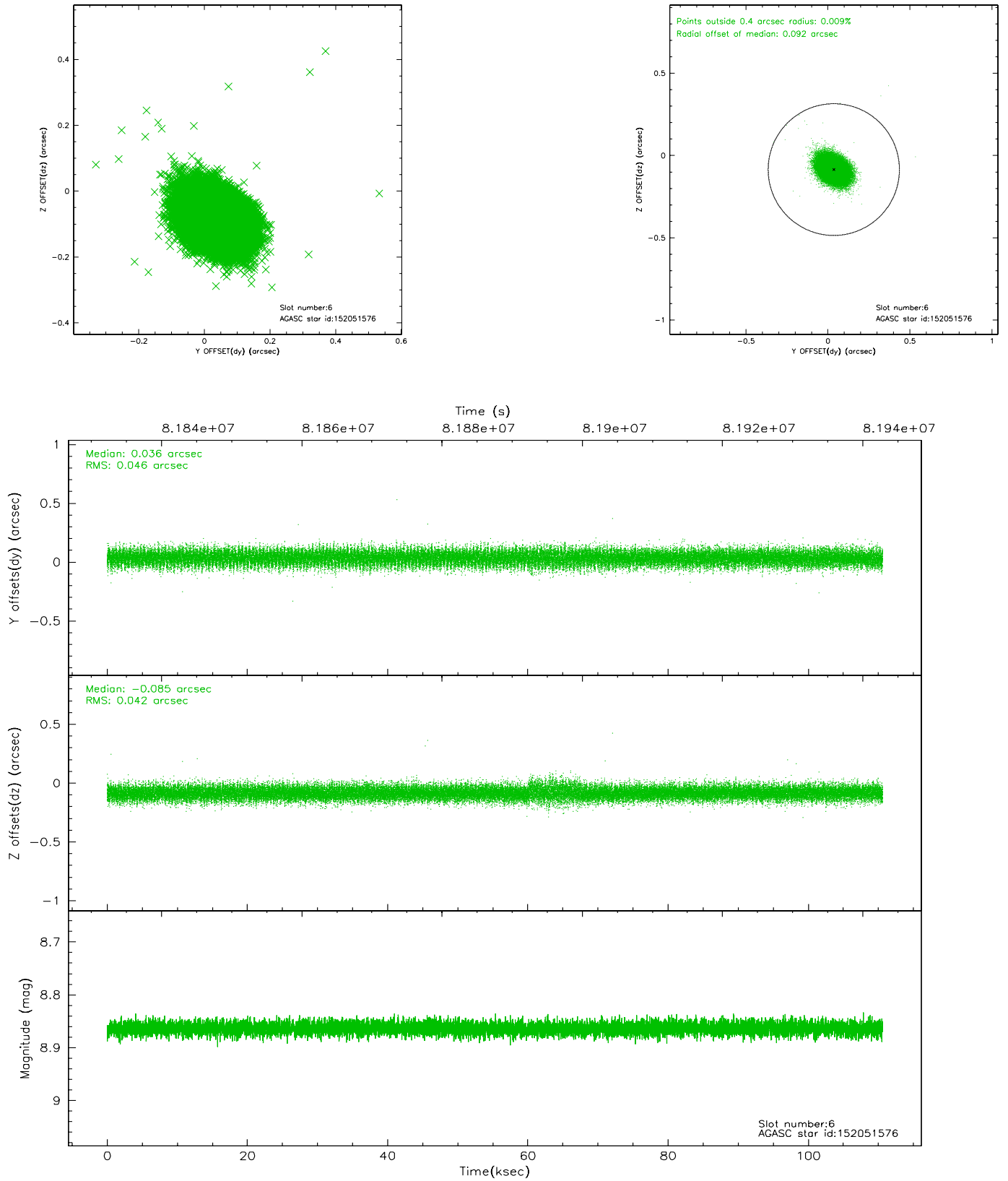
2.4.2 Slot 4



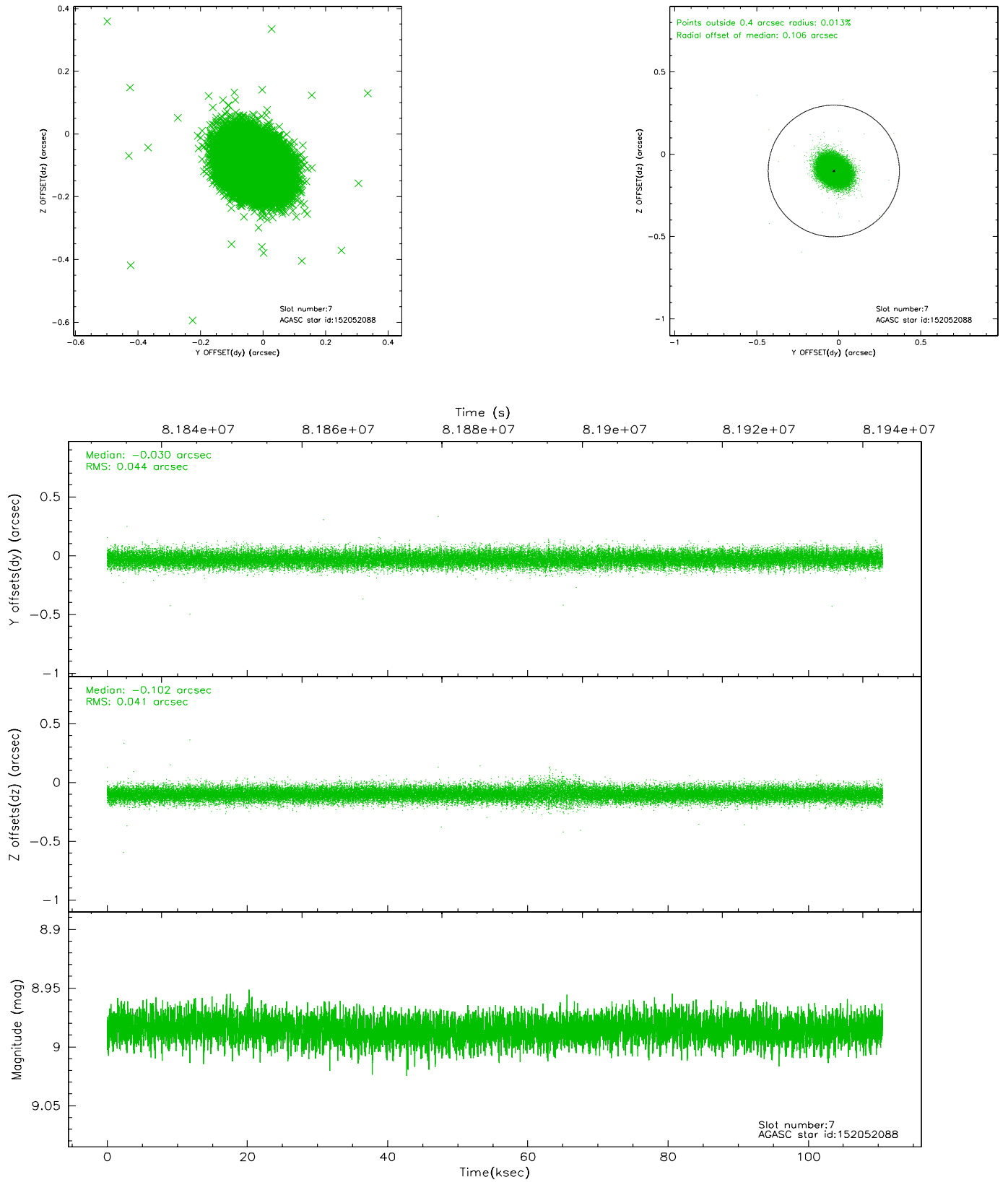
2.4.3 Slot 5



2.4.4 Slot 6

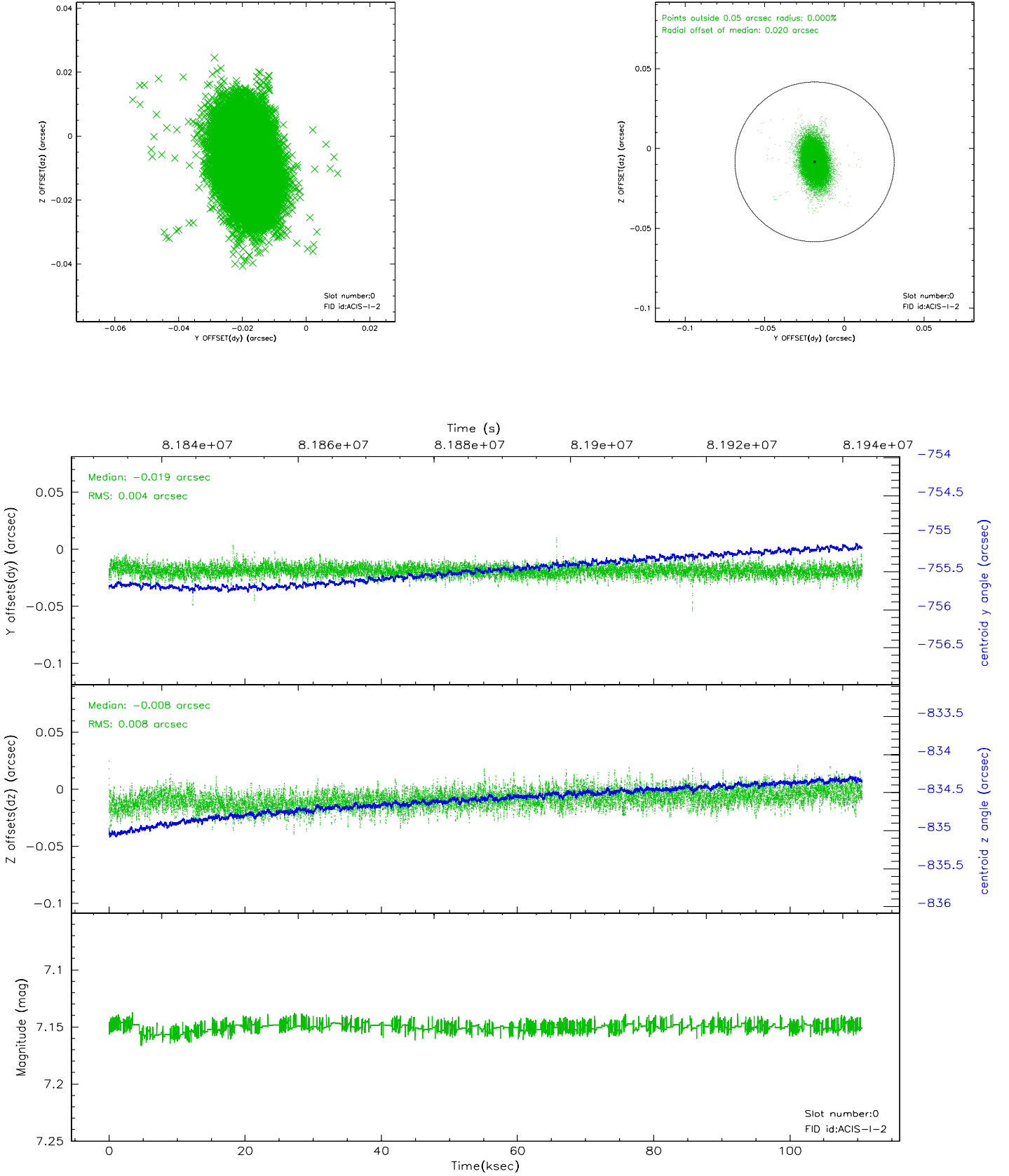


2.4.5 Slot 7

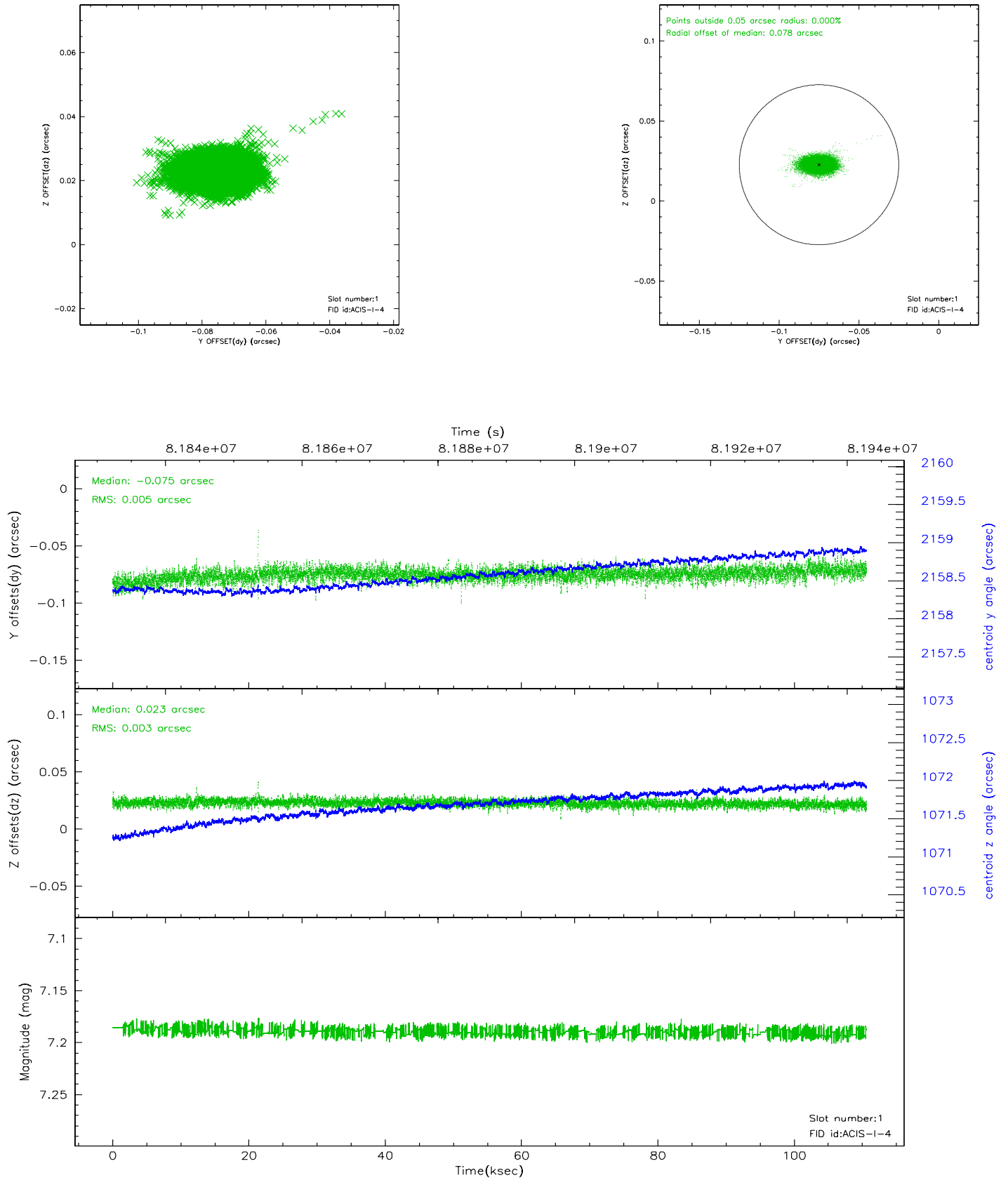


2.5 FID Slots

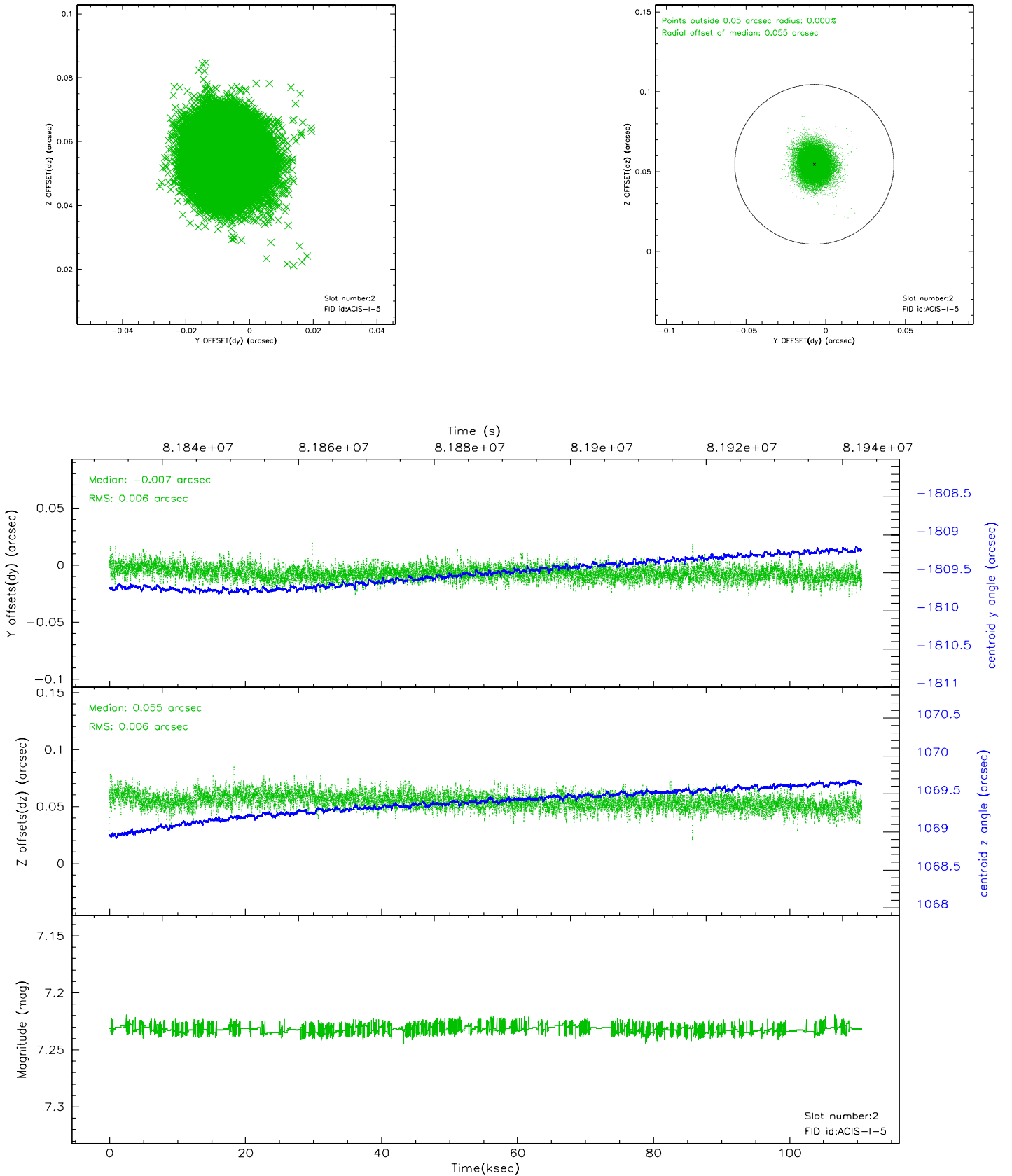
2.5.1 Slot 0



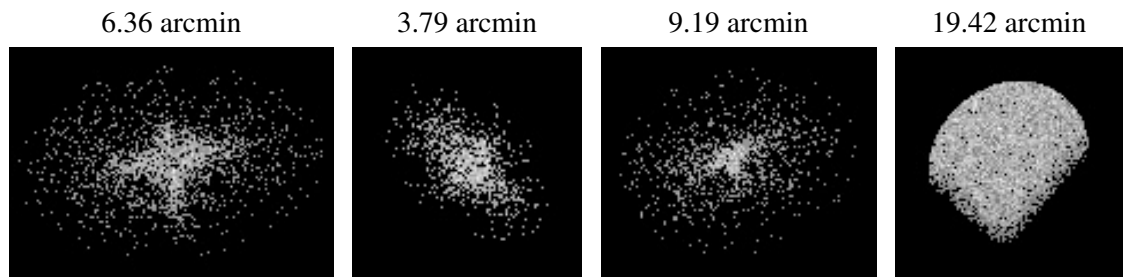
2.5.2 Slot 1



2.5.3 Slot 2



3 Point Sources



A Summary

A.1 Status

V&V Scientist	Beth Sundheim
V&V Date (YYYY-MM-DD)	2007.06.05
V&V Edition	1
V&V Disposition and Status	OK
V&V Charge Time	109.955

A.2 Comments