

V&V Reference Report

L2 ASCDS Version : 8.4.5

Observation 552 - L2 Version 3
Chandra X-Ray Center

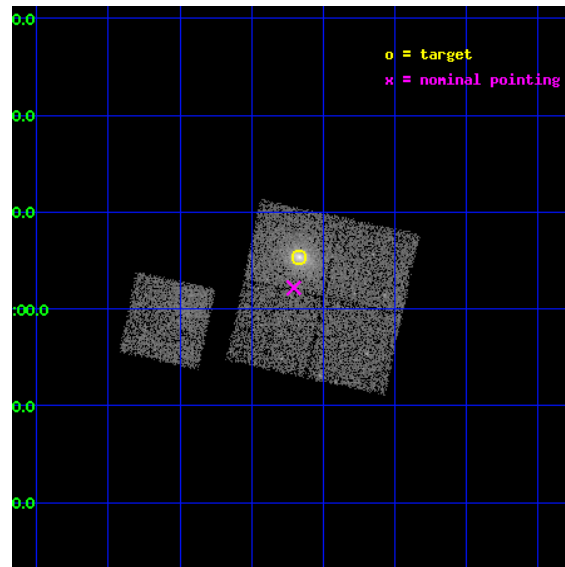
L2 Processing Date : Sep 2 2012

Contents

1	Front	2
2	OBI	3
2.1	OBI	3
2.1.1	Images	3
2.1.2	Bias	3
2.1.3	Parameters	4
2.1.4	Events	4
2.2	Compared Parameters	5
2.3	Aspect	6
2.4	Star Slots	9
2.4.1	Slot 3	9
2.4.2	Slot 4	10
2.4.3	Slot 5	11
2.4.4	Slot 6	12
2.4.5	Slot 7	13
2.5	FID Slots	14
2.5.1	Slot 0	14
2.5.2	Slot 1	15
2.5.3	Slot 2	16
A	Summary	17
A.1	Status	17
A.2	Comments	17

1 Front

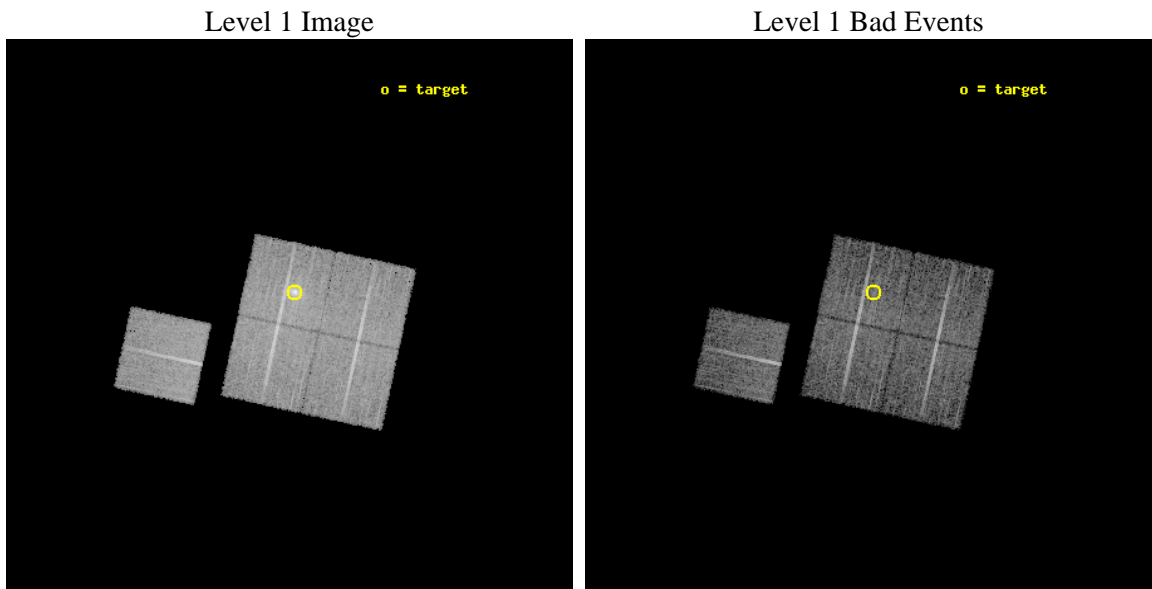
seq_num	800060	Sequence number
obs_id	552	Observation id
title	DETERMINATION OF H0/Q0	Proposal title
observer	DR. LEON VANSPEYBROECK	Principal investigator
object	RX J2129.6+0005	Source name
dtcycle	0	
cycle	P	events from which exps? Prim/Second/Both
ra_targ	322.416608	Observer's specified target RA [deg]
dec_targ	0.089931	Observer's specified target Dec [deg]
ra_nom	322.42619567468	Nominal RA [deg]
dec_nom	0.036207291780665	Nominal Dec [deg]
roll_nom	282.29386399964	Nominal Roll [deg]
revision	3	Processing version of data
ontime	10089.600009382	Sum of GTIs [s]
livetime	9961.8394188352	Livetime [s]
ontime0	10089.600009382	Sum of GTIs [s]
ontime1	10089.600009382	Sum of GTIs [s]
ontime2	10089.600009382	Sum of GTIs [s]
ontime3	10089.600009382	Sum of GTIs [s]
ontime6	10089.600009382	Sum of GTIs [s]
l2events	40757	Number of level 2 events



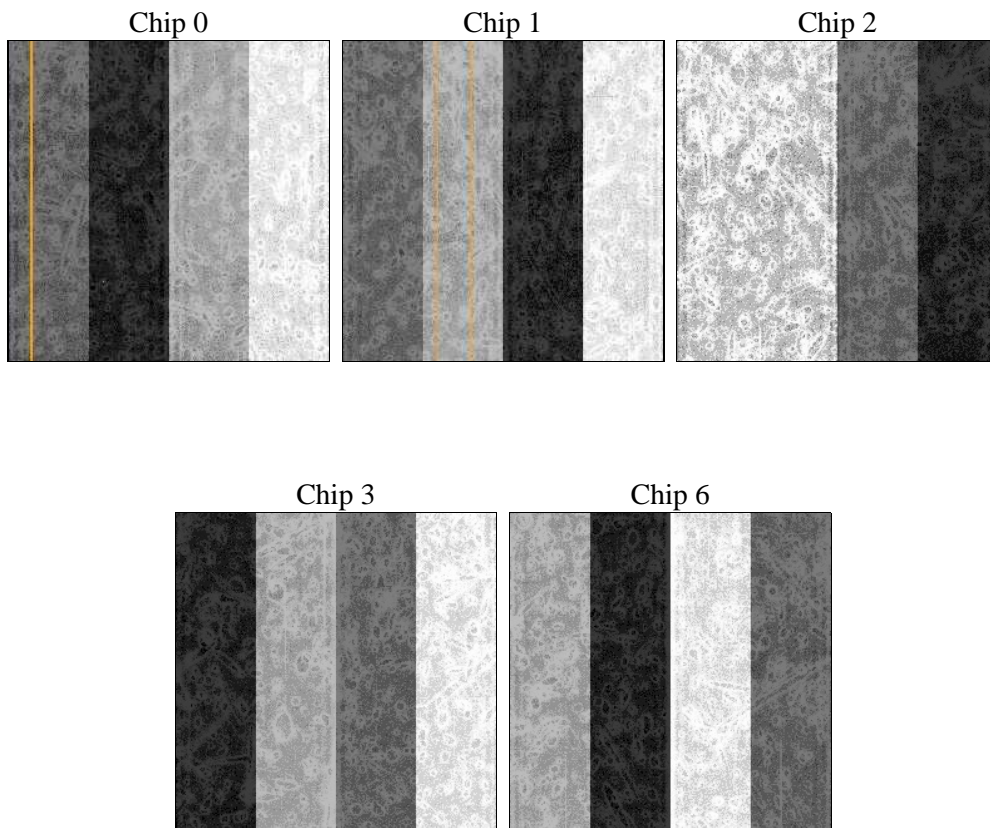
2 OBI

2.1 OBI

2.1.1 Images



2.1.2 Bias



2.1.3 Parameters

obi_num	0	Obi number	sched_exp_time	10000.000000	[s] Scheduled observation exposure time
ascdsver	8.4.5	Processing system revision	ontime	10089.600009382	Sum of GTIs [s]
caldsver	4.5.1.1	 	ontime0	10089.600009382	Sum of GTIs [s]
date	2012-09-02T09:58:15	Date and time of file creation	ontime1	10089.600009382	Sum of GTIs [s]
revision	3	Processing version of data	ontime2	10089.600009382	Sum of GTIs [s]
			ontime3	10089.600009382	Sum of GTIs [s]
			ontime6	10089.600009382	Sum of GTIs [s]
			l1events	318632	Number of level 1 events

2.1.4 Events

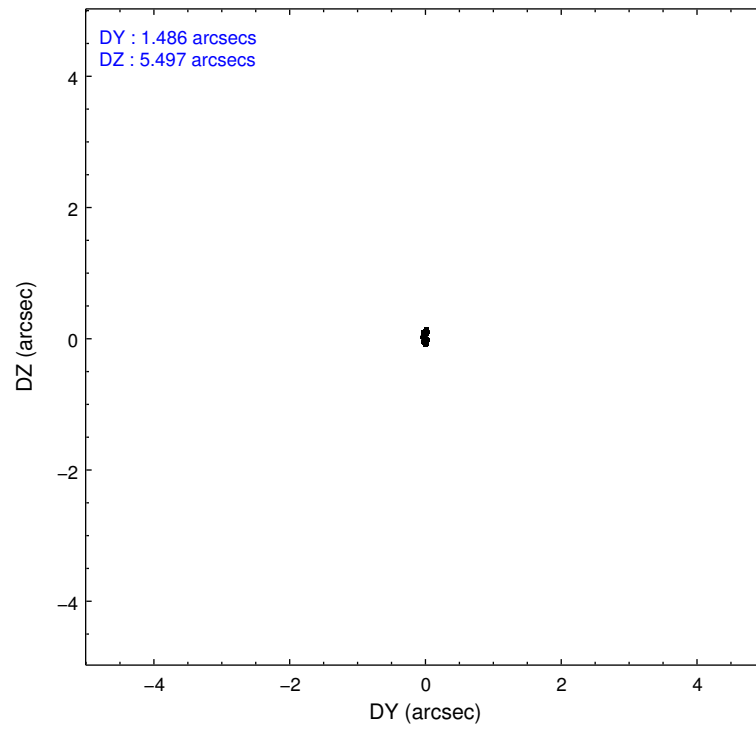
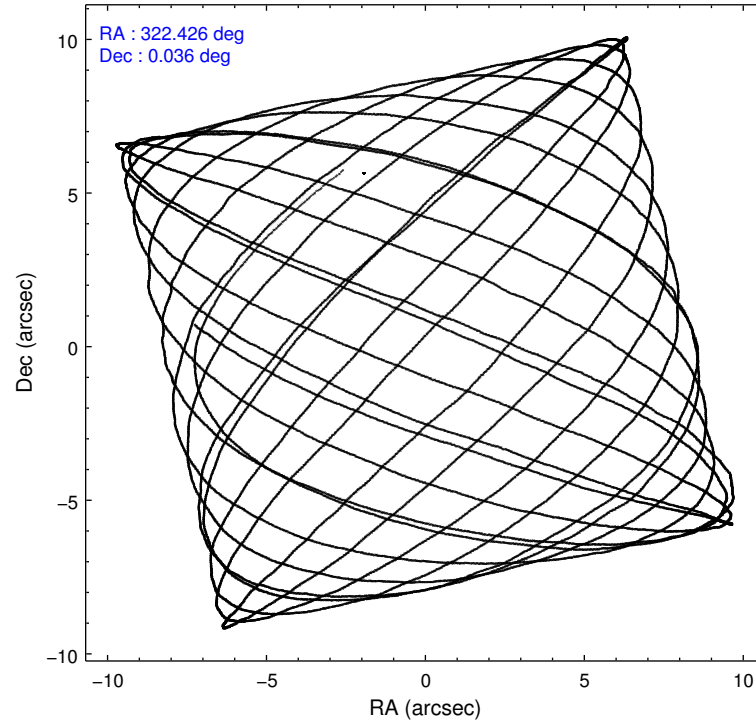
	ccd 0	ccd 1	ccd 2	ccd 3	ccd 6
level 1 events	58398	58464	64438	73147	64185
rejected events	51072	50578	57412	56531	56516
rejected %	87%	86%	89%	77%	88%

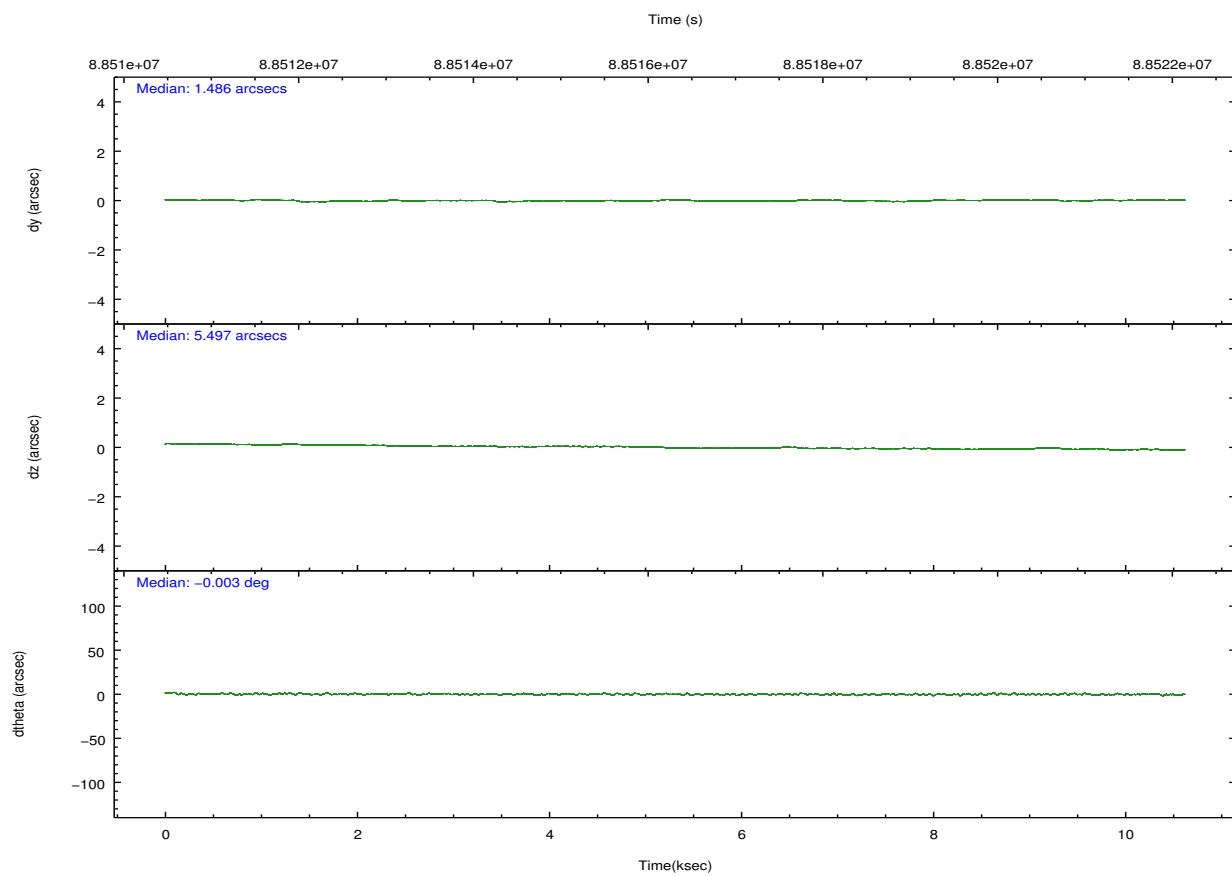
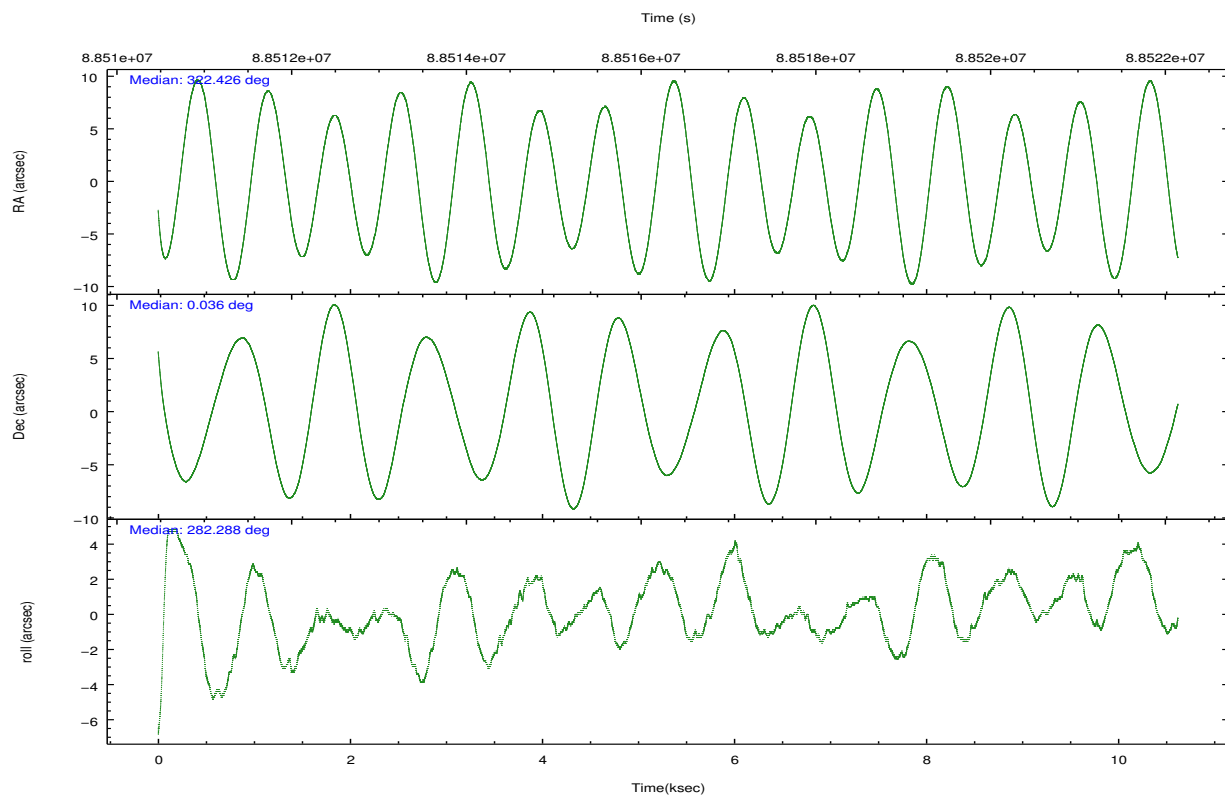
	ccd 0	ccd 1	ccd 2	ccd 3	ccd 6
grade 0 events	3132	3332	3091	11056	3460
	5%	5%	4%	15%	5%
grade 1 events	24	35	32	61	26
	0%	0%	0%	0%	0%
grade 2 events	1562	1540	1448	2275	1402
	2%	2%	2%	3%	2%
grade 3 events	712	773	705	937	758
	1%	1%	1%	1%	1%
grade 4 events	671	812	672	885	713
	1%	1%	1%	1%	1%
grade 5 events	2129	2315	2051	2350	2462
	3%	3%	3%	3%	3%
grade 6 events	1253	1438	1114	1473	1343
	2%	2%	1%	2%	2%
grade 7 events	48915	48219	55325	54110	54021
	83%	82%	85%	73%	84%

2.2 Compared Parameters

Parameter	Planned	Actual	Parameter	Planned	Actual
Instrument	ACIS	ACIS	Obspar format version number	7	7
Detector	ACIS-01236	ACIS-01236	Obspar file type	PREDICTED	ACTUAL
Grating	NONE	NONE	Obspar update status	NONE	UPDATED
Data mode	VFAINT	VFAINT	Number of optional ACIS chips dropped	0	0
Observation mode	POINTING	POINTING	On-chip summing requested	N	N
[deg] Pointing RA	322.407710	322.4261956746793	Subarray requested	NONE	NONE
[deg] Pointing Dec	0.056668	0.03620729178066491	Alternating exposures requested	N	N
[deg] Pointing Roll	282.085201	282.2938639996445	[s] Primary exposure time	0.000000	3.2
[mm] SIM focus pos	-0.782348	-0.7809083437167272			
[mm] SIM defocus	0	0.001439871863259334			
[mm] SIM translation stage pos	-225.840463	-225.8433433320239			
[mm] SIM translation stage offset	-7.752	-7.749109670905796			
[s] Observation start time (MET)	88511618.184000	88510442.753224			
Observation start date	2000-10-21T10:32:34	2000-10-21T10:14:02			
[s] Observation end time (MET)	88521618.184000	88522487.01617999			
Observation end date	2000-10-21T13:19:14	2000-10-21T13:34:47			
Read mode	TIMED	TIMED			

2.3 Aspect



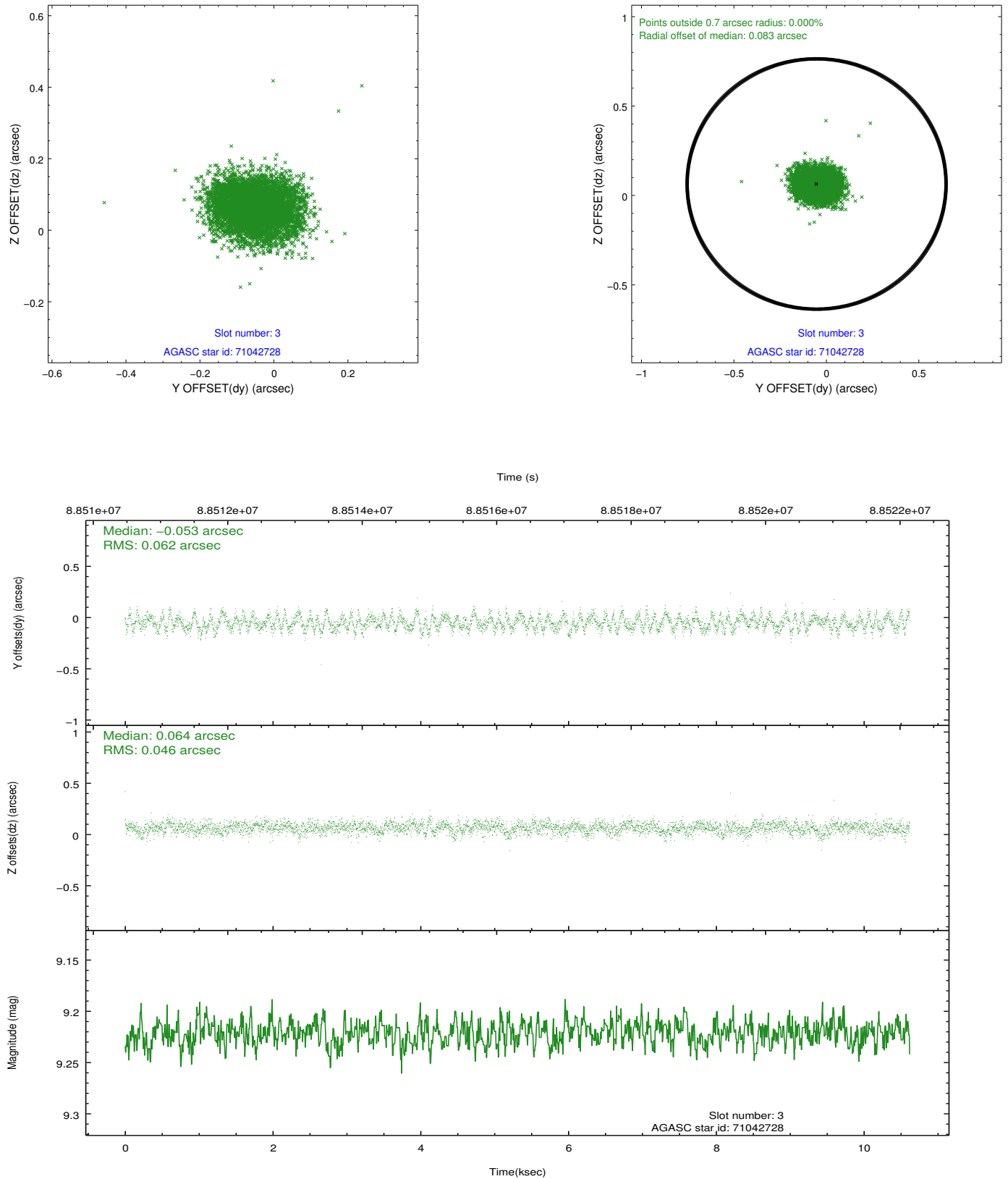


Slot Statistics

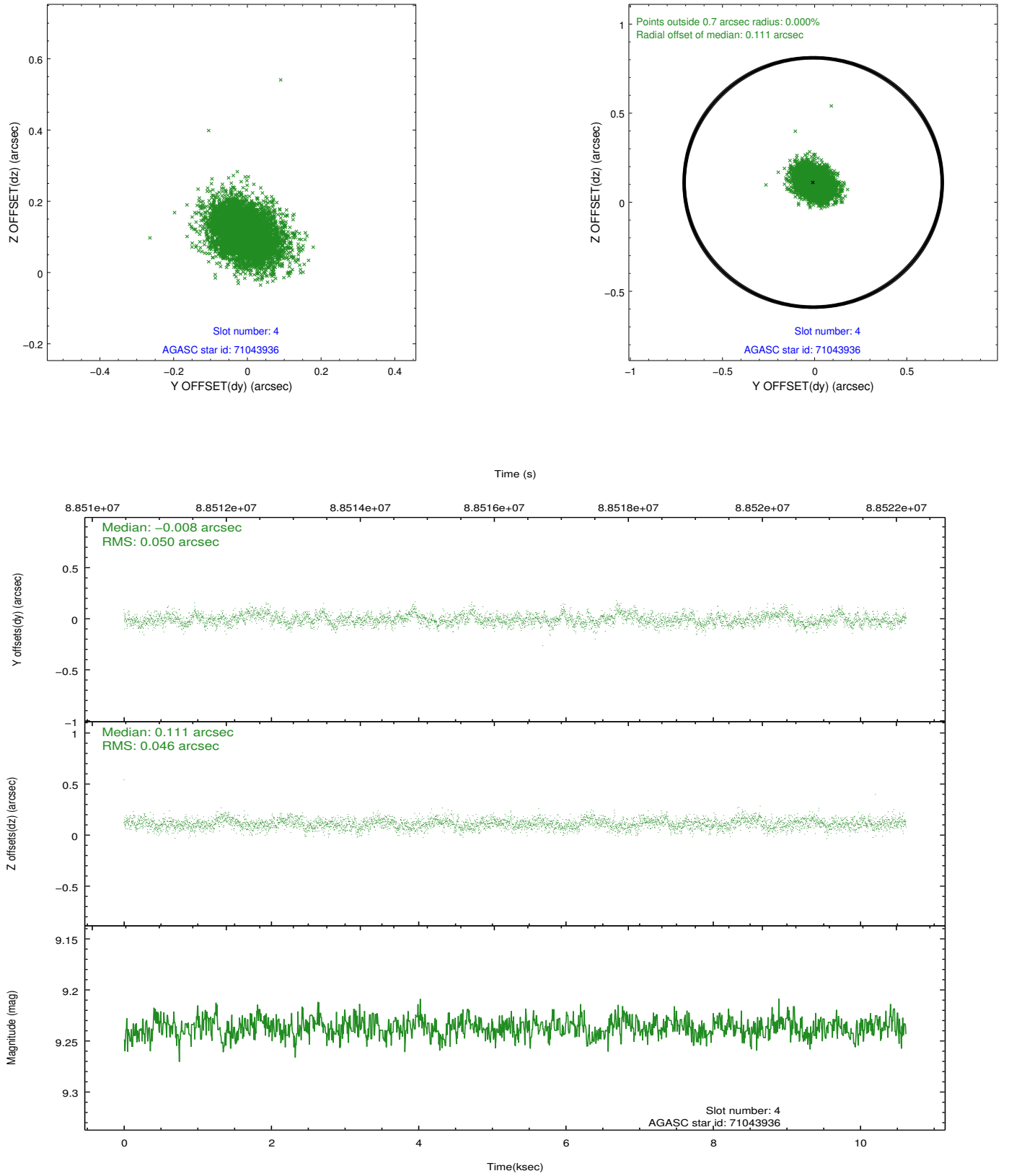
slot	status	id	mag	n_pts	med_dy	med_dz	dr1	dr2	ra	dec	mean_y	mean_z
0	FID	ACIS-I-2	7.17	2591	-0.047	-0.057	0.008	0.014	0.000000	0.000000	-756.40	-993.34
1	FID	ACIS-I-4	7.16	2591	-0.032	0.050	0.006	0.011	0.000000	0.000000	2157.39	912.62
2	FID	ACIS-I-5	7.22	2591	-0.022	0.077	0.008	0.014	0.000000	0.000000	-1809.19	910.02
3	GUIDE	71042728	9.22	5180	-0.053	0.064	0.083	0.131	322.833566	0.458135	-1092.48	1801.93
4	GUIDE	71043936	9.24	5178	-0.008	0.111	0.072	0.118	322.677260	0.081826	114.41	968.62
5	GUIDE	69346400	9.35	5182	-0.086	-0.071	0.084	0.134	321.808714	0.369328	-1551.96	-1872.68
6	GUIDE	69341408	9.22	5148	0.072	-0.026	0.077	0.126	322.446246	0.142198	-272.16	200.06
7	GUIDE	680923504	9.49	5179	0.071	-0.078	0.084	0.139	321.970587	-0.475858	1545.50	-1939.73

2.4 Star Slots

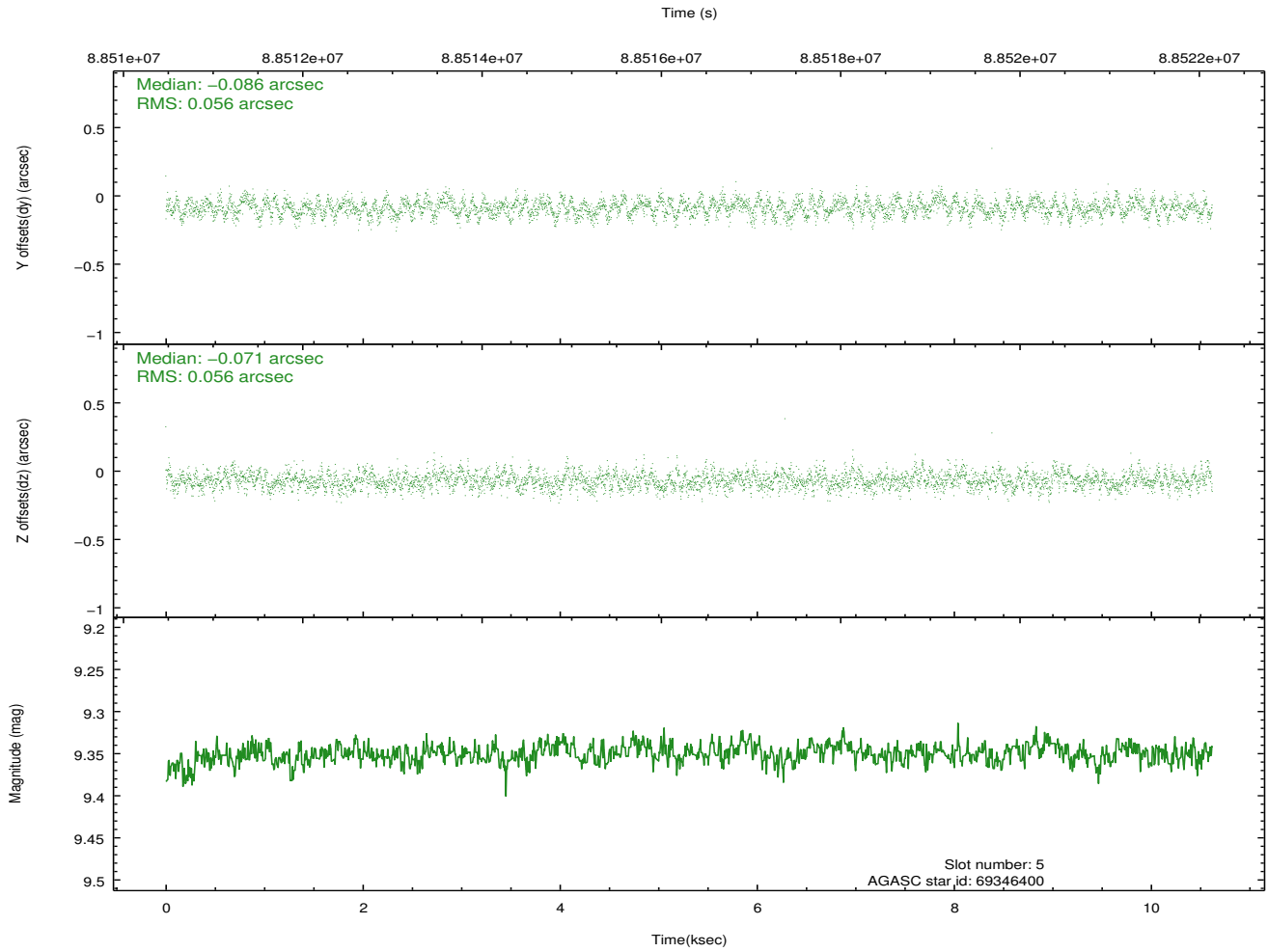
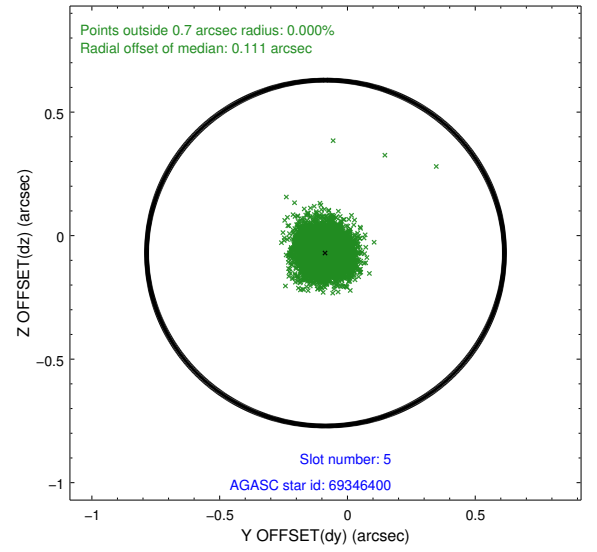
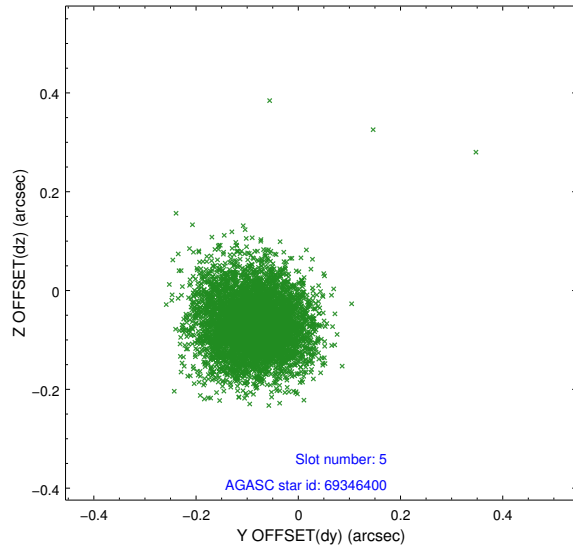
2.4.1 Slot 3



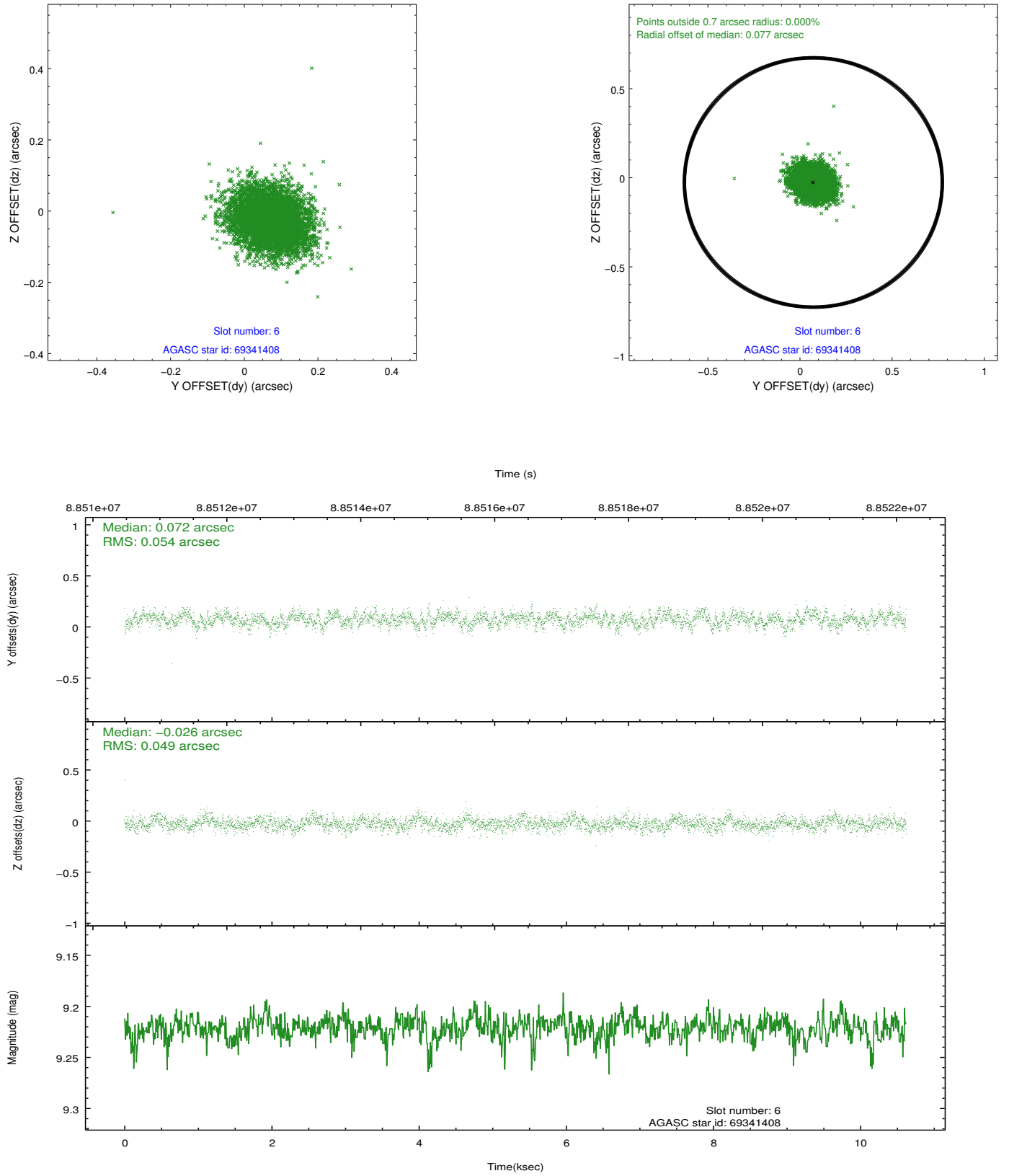
2.4.2 Slot 4



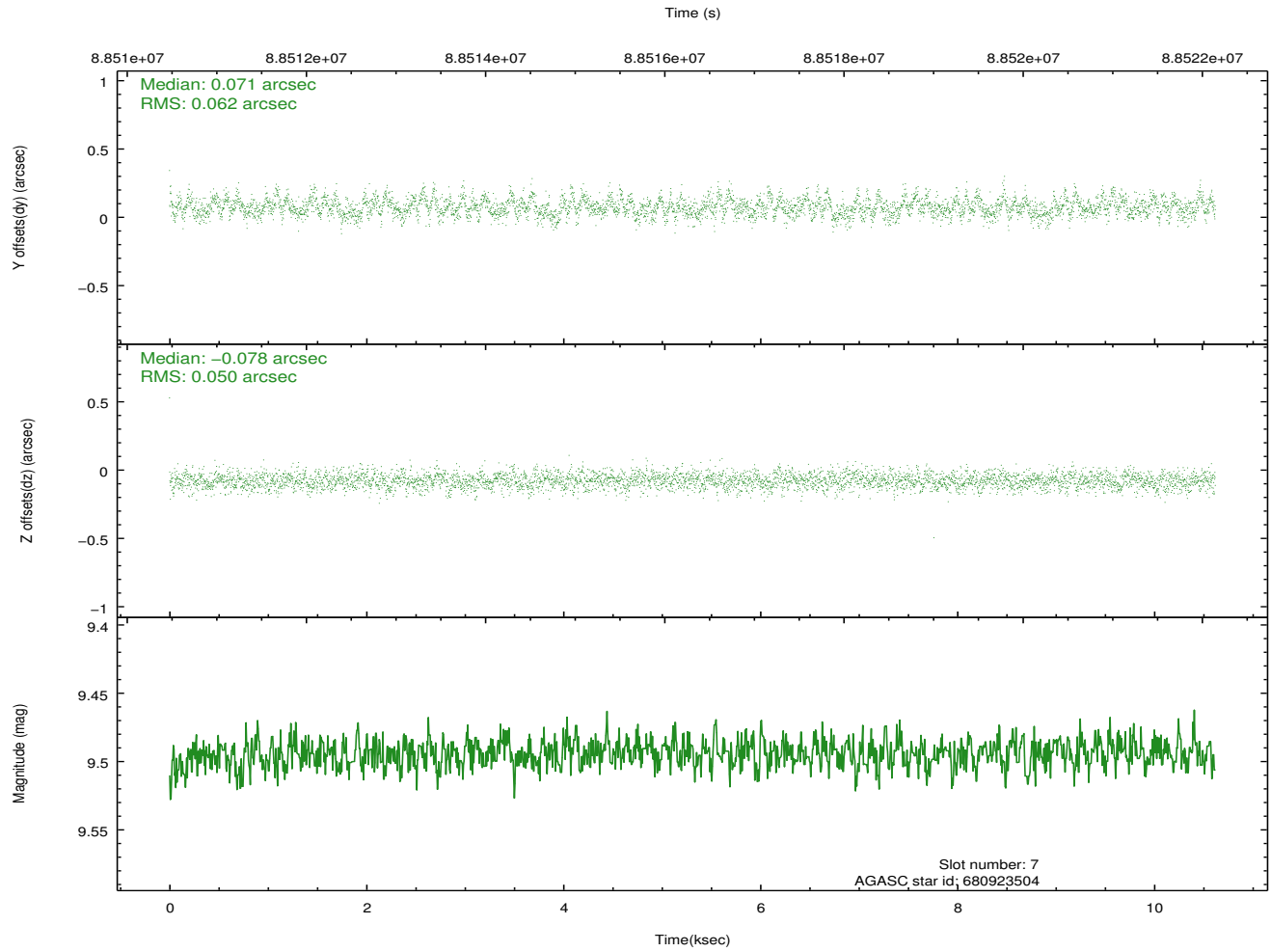
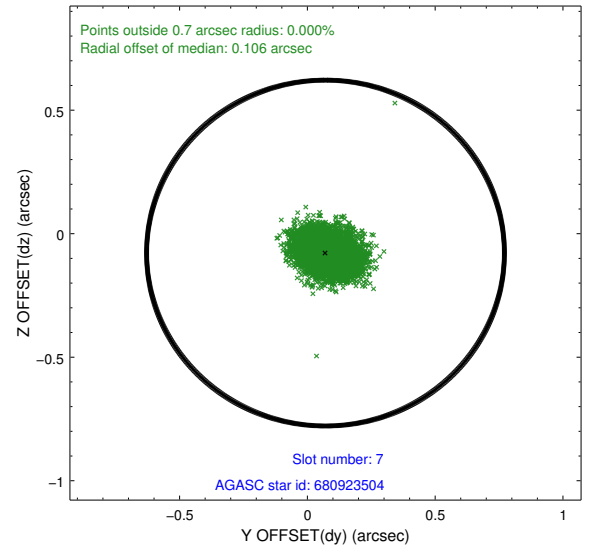
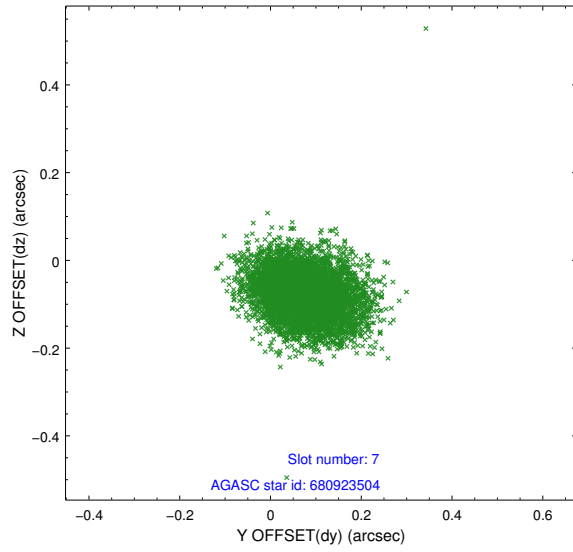
2.4.3 Slot 5



2.4.4 Slot 6

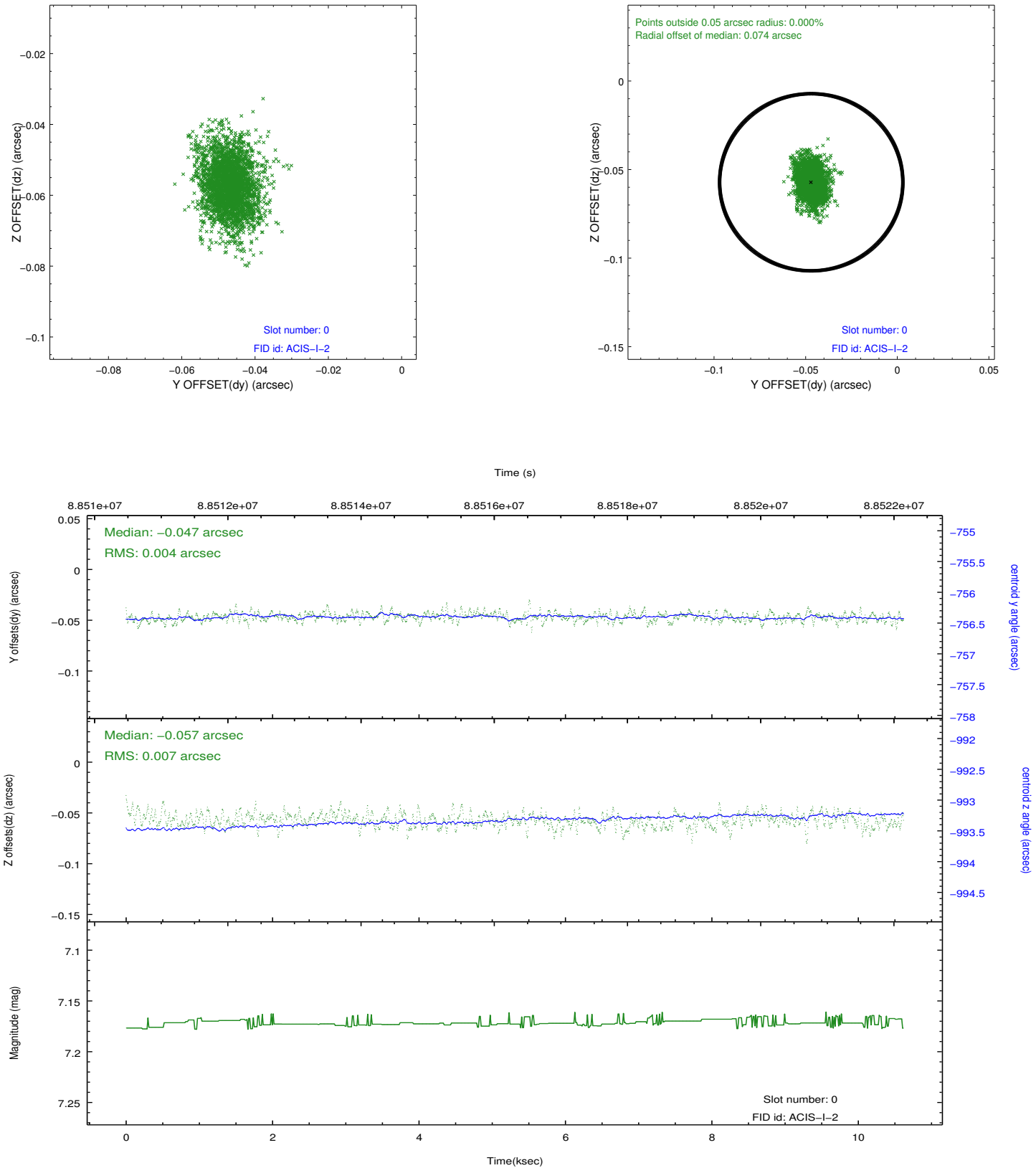


2.4.5 Slot 7

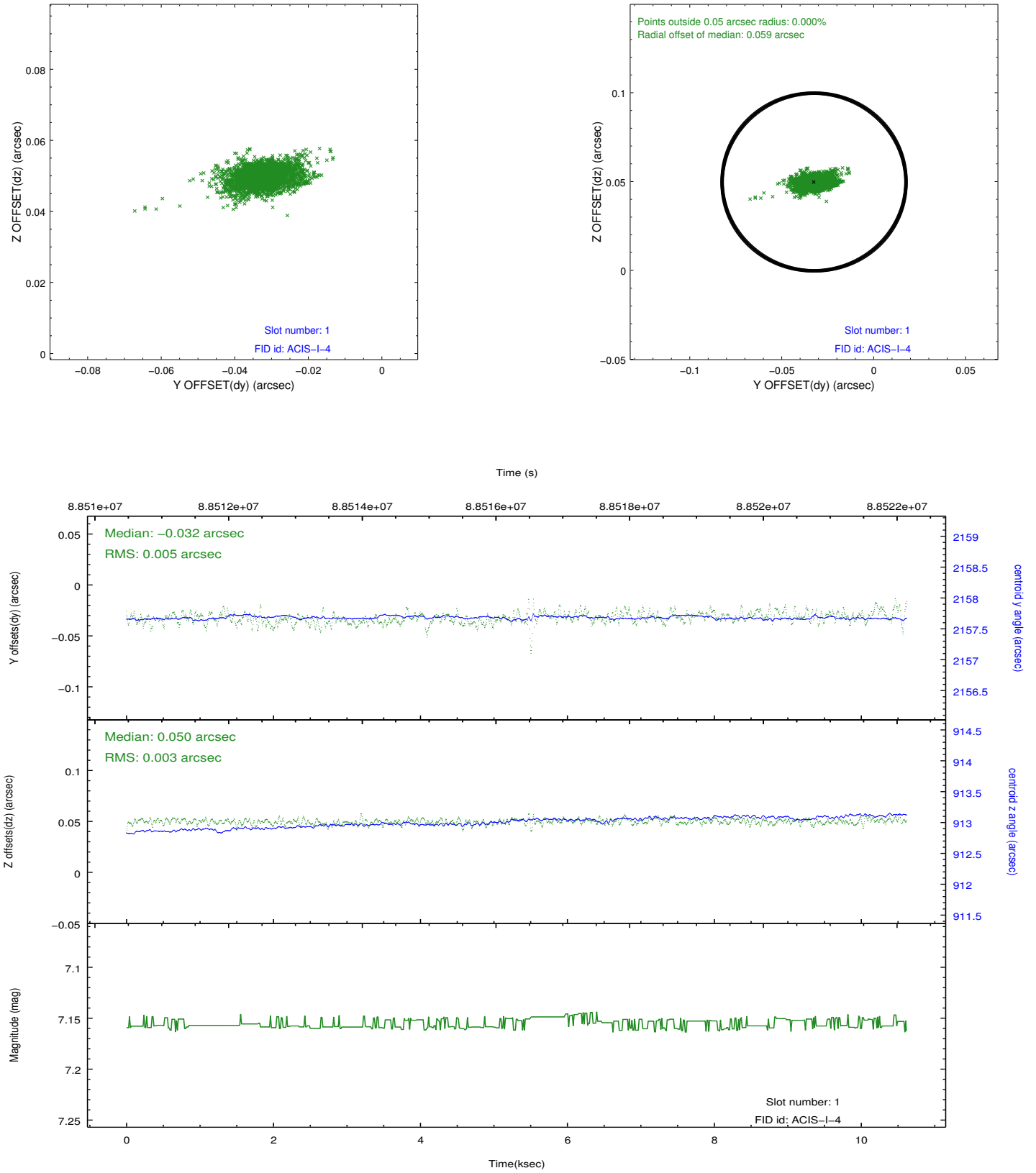


2.5 FID Slots

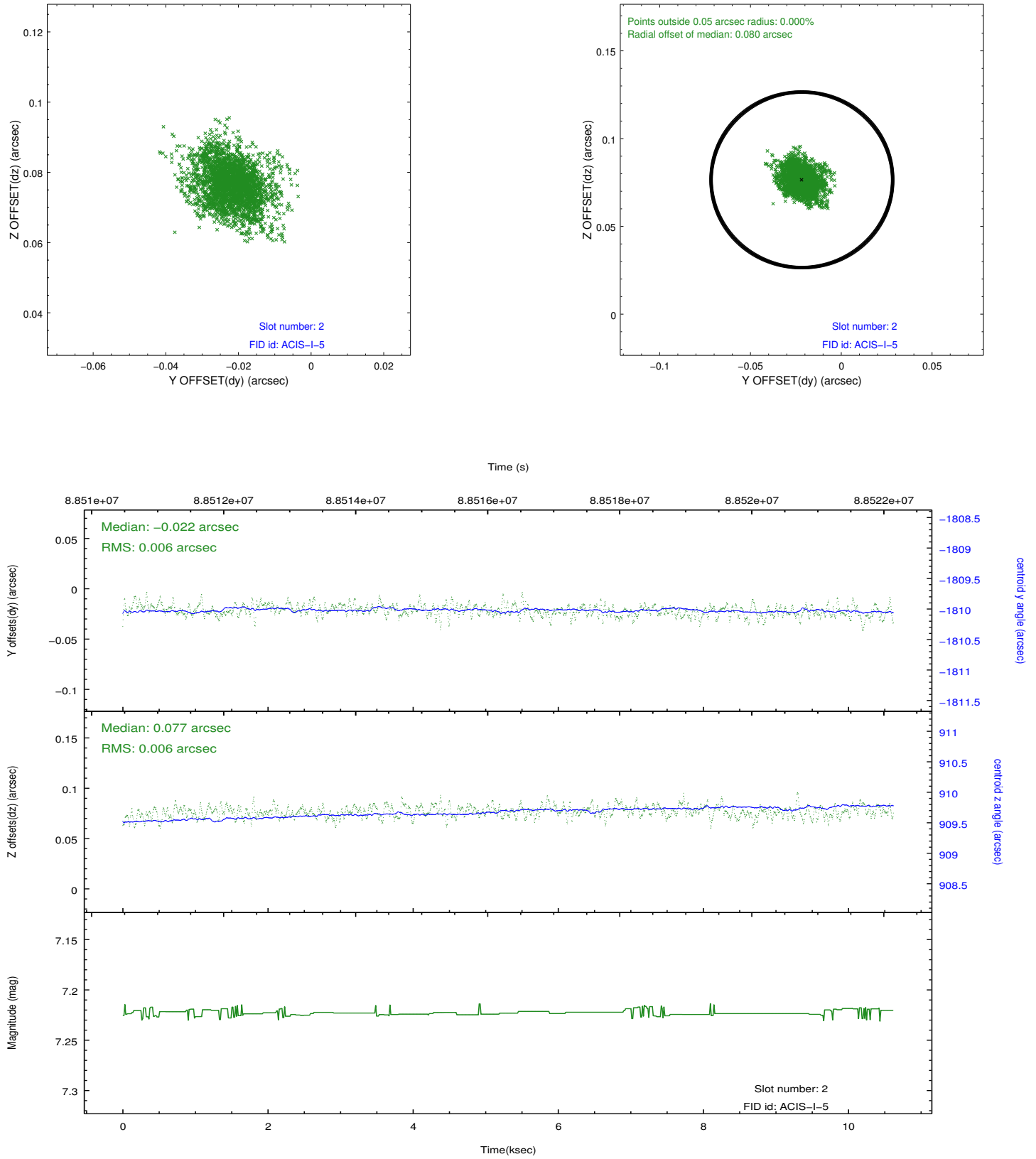
2.5.1 Slot 0



2.5.2 Slot 1



2.5.3 Slot 2



A Summary

A.1 Status

V&V Scientist	Jen Lauer
V&V Date (YYYY-MM-DD)	2012.09.10
V&V Edition	1
V&V Disposition and Status	OK
V&V Charge Time	10.092

A.2 Comments