

V&V Reference Report

L2 ASCDS Version : 7.6.10

Observation 547 - L2 Version 001
Chandra X-Ray Center

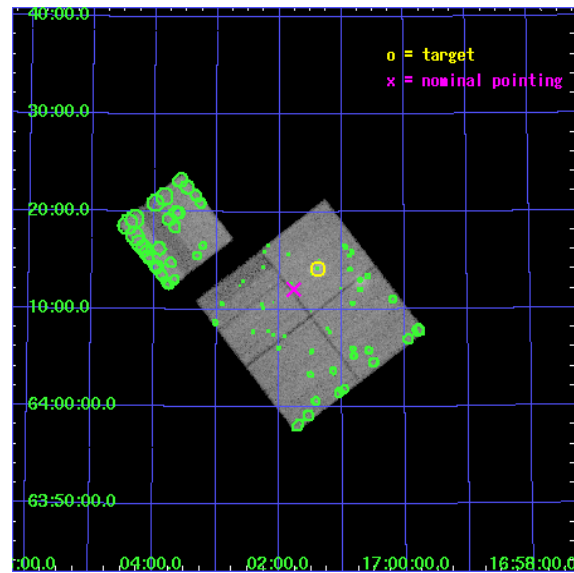
L2 Processing Date : Jun 14 2007

Contents

1	Front	2
2	OBI	3
2.1	OBI	3
2.1.1	Images	3
2.1.2	Bias	3
2.1.3	Parameters	4
2.1.4	Events	4
2.2	Compared Parameters	5
2.3	Aspect	6
2.4	Star Slots	9
2.4.1	Slot 3	9
2.4.2	Slot 4	10
2.4.3	Slot 5	11
2.4.4	Slot 6	12
2.4.5	Slot 7	13
2.5	FID Slots	14
2.5.1	Slot 0	14
2.5.2	Slot 1	15
2.5.3	Slot 2	16
3	Point Sources	17
A	Summary	18
A.1	Status	18
A.2	Comments	18

1 Front

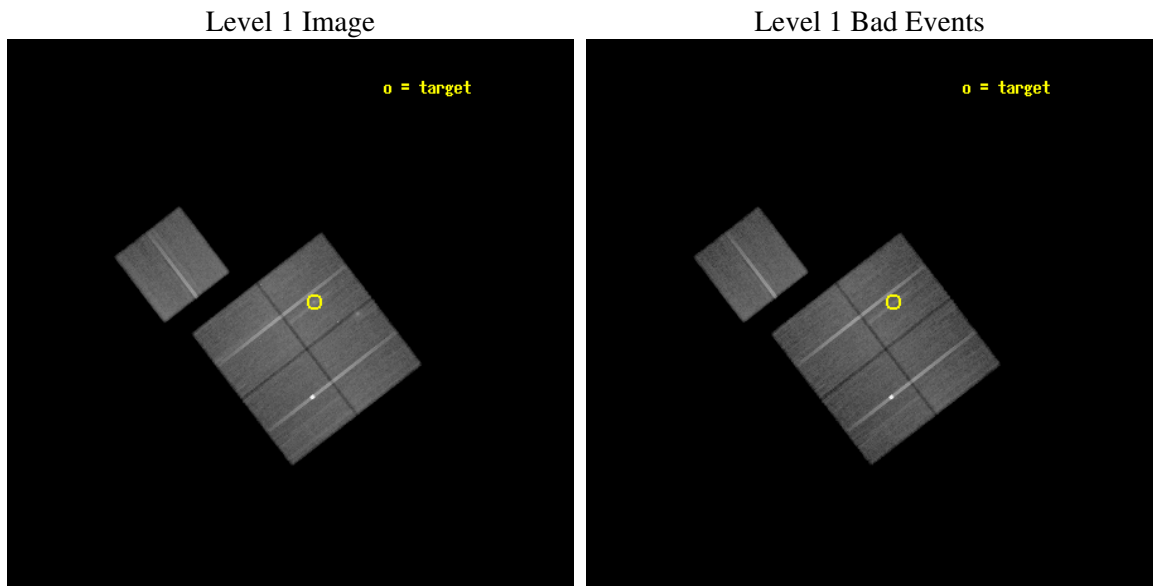
seq_num	800055
obs_id	547
title	DETERMINATION OF H0/Q0
observer	DR. LEON VANSPEYBROECK
object	V1701+6414
dtcycle	0
cycle	P
ra_targ	255.345833
dec_targ	64.236
ra_nom	255.44223182261
dec_nom	64.201177360568
roll_nom	322.43146205323
revision	2
ontime	50163.118096337
livetime	49527.922490397
ontime0	50169.600046724
ontime1	50166.359096482
ontime2	50163.118136257
ontime3	50163.118096337
ontime6	50166.359086469
l2events	279996



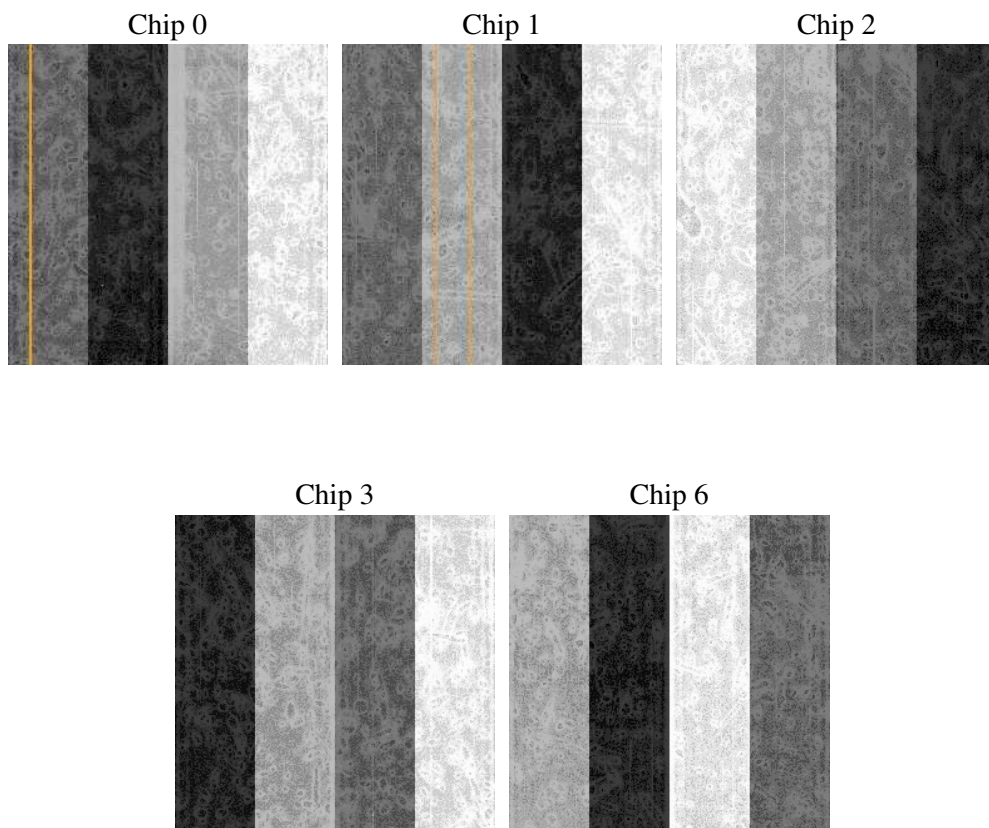
2 OBI

2.1 OBI

2.1.1 Images



2.1.2 Bias



2.1.3 Parameters

obi_num	0
ascdsver	7.6.10
caldsver	3.4.0
date	2007-06-14T10:53:47
revision	2

sched_exp_time	50000.000000
ontime	50163.118096337
ontime0	50169.600046724
ontime1	50166.359096482
ontime2	50163.118136257
ontime3	50163.118096337
ontime6	50166.359086469
l1events	1793593

2.1.4 Events

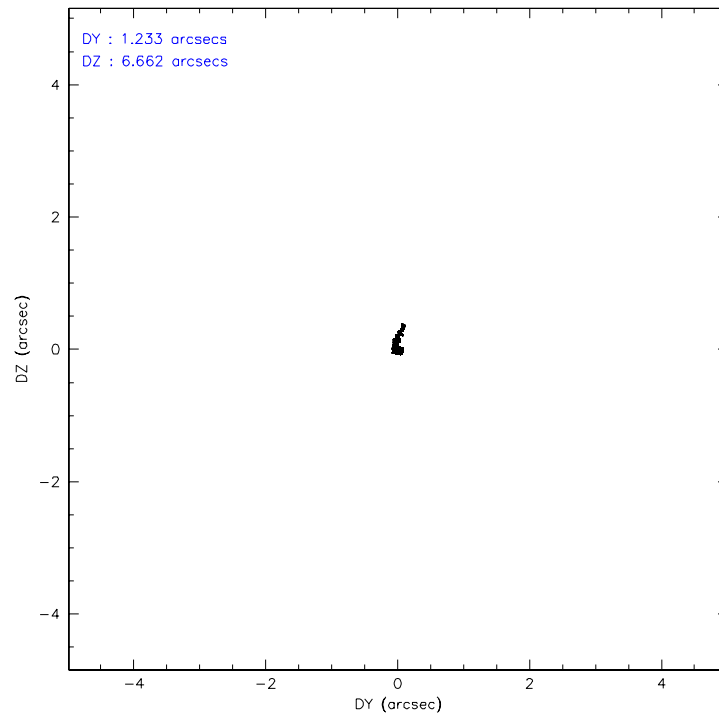
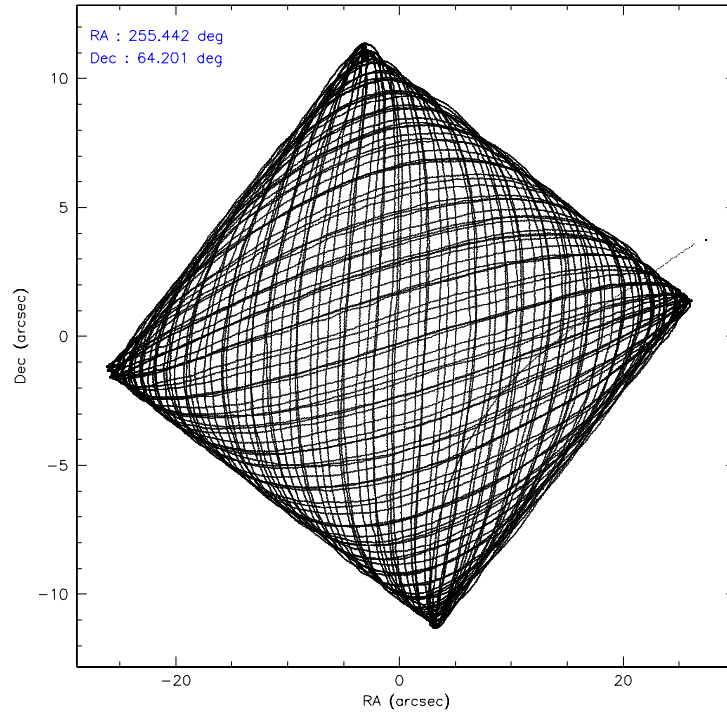
	ccd 0	ccd 1	ccd 2	ccd 3	ccd 6
level 1 events	357477	338977	365042	367853	364244
rejected events	288727	271672	301746	299892	298744
rejected %	80%	80%	82%	81%	82%

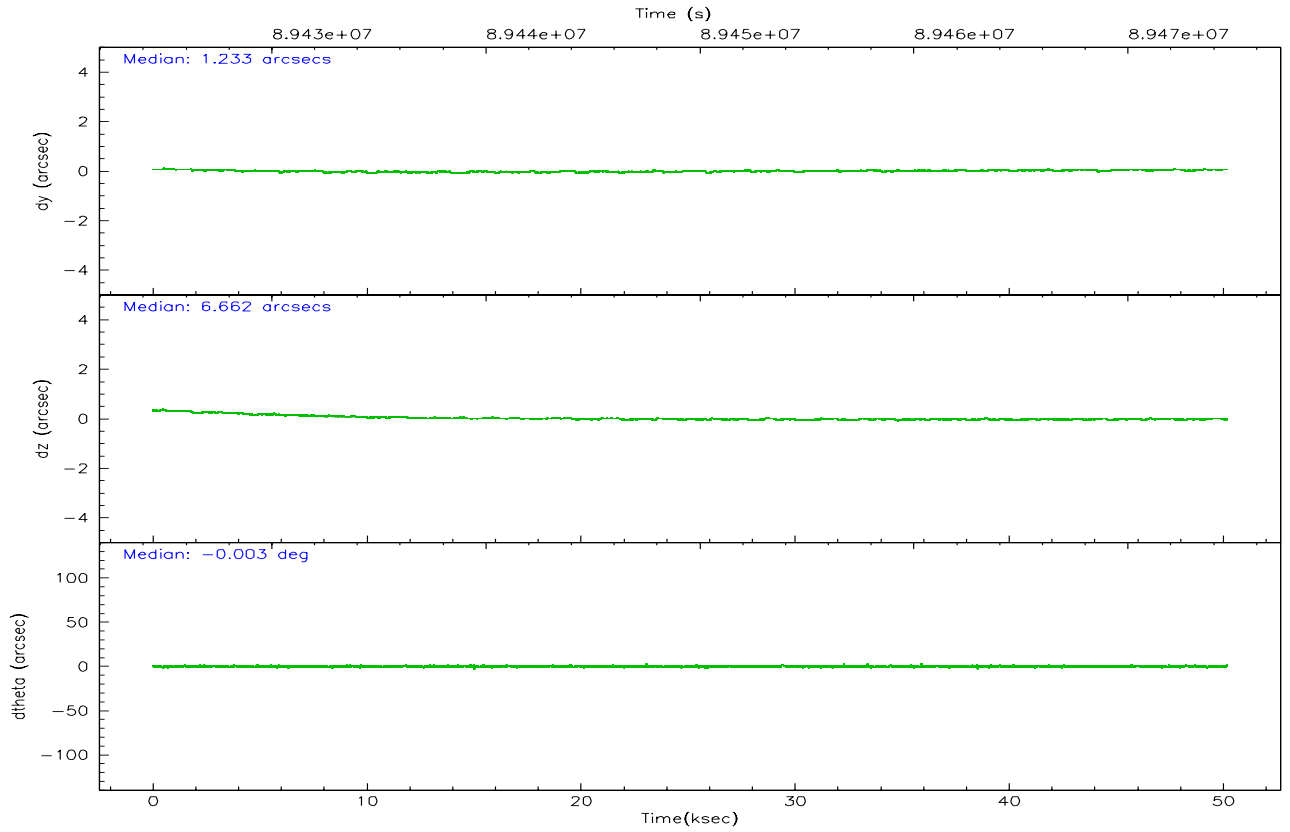
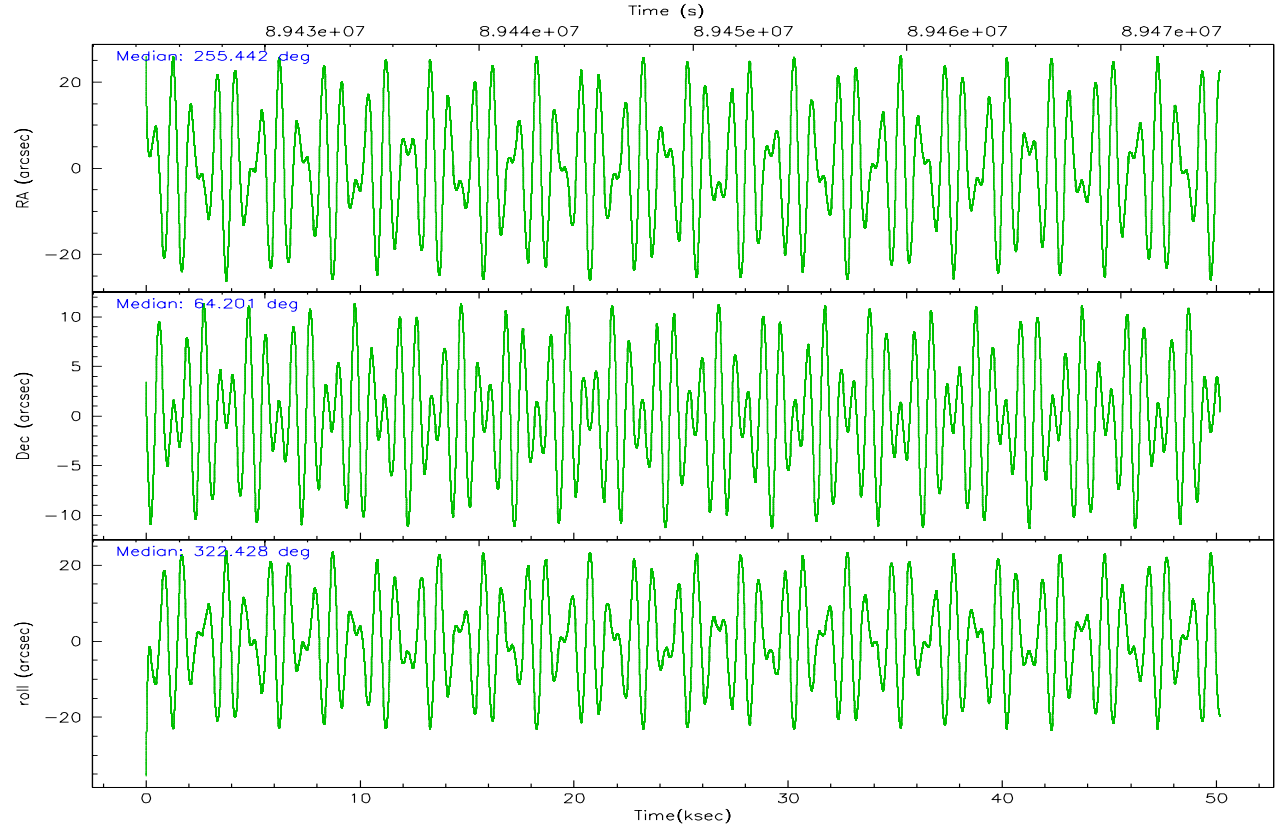
	ccd 0	ccd 1	ccd 2	ccd 3	ccd 6
grade 0 events	27790	28391	28202	30157	28968
	7%	8%	7%	8%	7%
grade 1 events	189	153	214	202	203
	0%	0%	0%	0%	0%
grade 2 events	21747	18216	15856	17640	17310
	6%	5%	4%	4%	4%
grade 3 events	3736	4207	3354	3751	3813
	1%	1%	0%	1%	1%
grade 4 events	3888	4301	4427	4132	3961
	1%	1%	1%	1%	1%
grade 5 events	10209	10925	9621	11395	12043
	2%	3%	2%	3%	3%
grade 6 events	11659	12277	11540	12374	11510
	3%	3%	3%	3%	3%
grade 7 events	278259	260507	291828	288202	286436
	77%	76%	79%	78%	78%

2.2 Compared Parameters

Parameter	Planned	Actual	Parameter	Planned	Actual
Instrument	ACIS	ACIS	Obspar format version number	6	6
Detector	ACIS-01236	ACIS-01236	Obspar file type	PREDICTED	ACTUAL
Grating	NONE	NONE	Obspar update status	NONE	UPDATED
Data mode	VFAINT	VFAINT	Number of optional ACIS chips dropped	0	0
Observation mode	POINTING	POINTING	On-chip summing requested	N	N
Pointing RA	255.379592	255.4422318226145	Subarray requested	NONE	NONE
Pointing Dec	64.204856	64.20117736056847	Alternating exposures requested	N	N
Pointing Roll	322.279177	322.4314620532287	Primary exposure time	3.200000	3.2
SIM focus pos (mm)	-0.782348	-0.7809083437167272			
SIM defocus (mm)	0	0.001439871863259334			
SIM translation stage pos (mm)	-225.840463	-225.8433433320239			
SIM translation stage offset (mm)	-7.752	-7.749109670905796			
Observation start time	89424634.184000	89423592.225225			
Observation start date	2000-11-01T00:09:30	2000-10-31T23:53:12			
Observation end time	89474634.184000	89475401.364682			
Observation end date	2000-11-01T14:02:50	2000-11-01T14:16:41			
Read mode	TIMED	TIMED			

2.3 Aspect



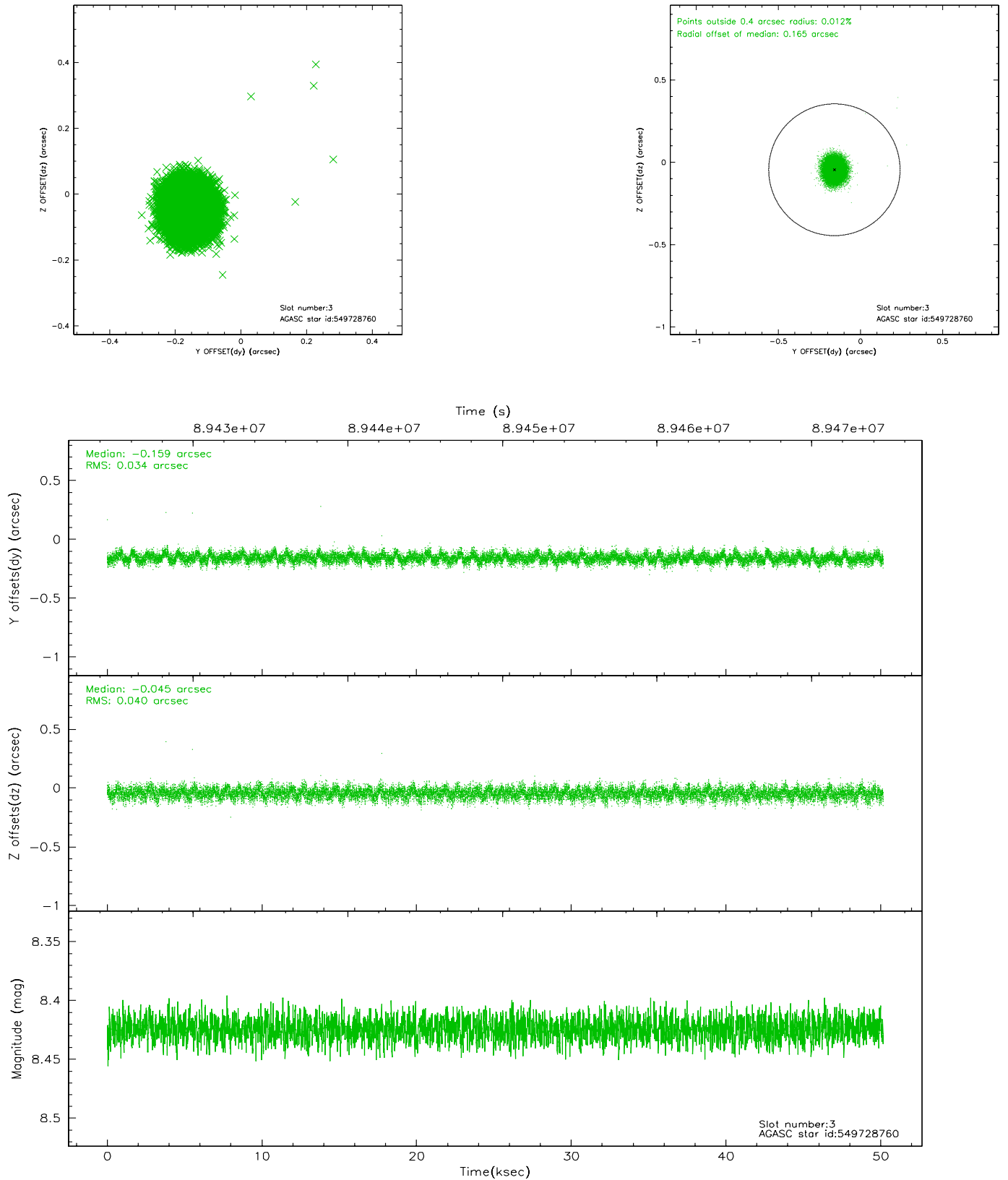


Slot Statistics

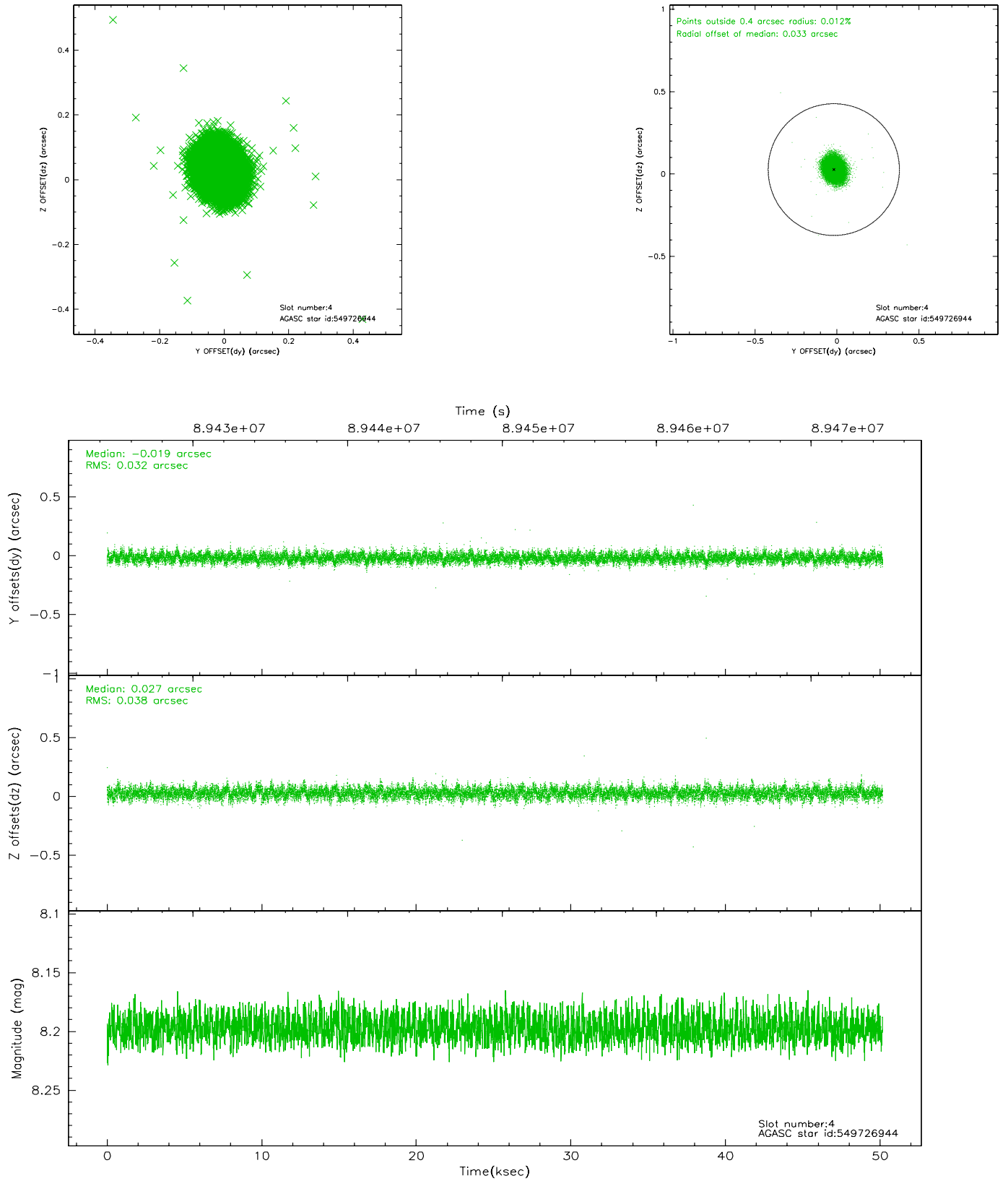
slot	status	id	mag	n_pts	med_dy	med_dz	dr1	dr2	ra	dec	mean_y	mean_z
0	FID	ACIS-I-2	7.18	12238	-0.045	-0.023	0.008	0.015	0.000000	0.000000	-756.15	-994.52
1	FID	ACIS-I-4	7.15	12237	-0.075	0.040	0.005	0.009	0.000000	0.000000	2157.83	911.68
2	FID	ACIS-I-5	7.22	12239	0.019	0.052	0.008	0.014	0.000000	0.000000	-1809.55	908.51
3	GUIDE	549728760	8.42	24476	-0.159	-0.045	0.056	0.089	253.412765	64.138917	-2325.80	-2039.21
4	GUIDE	549726944	8.20	24475	-0.019	0.027	0.052	0.085	254.598381	64.304516	-1187.96	-456.04
5	GUIDE	549719808	8.81	24396	-0.054	-0.035	0.068	0.112	255.292775	64.694097	-1182.72	1311.79
6	GUIDE	549726784	8.99	24474	0.097	0.025	0.059	0.097	255.680869	64.026795	768.09	-214.98
7	GUIDE	549724848	9.56	24464	0.132	0.034	0.106	0.182	255.389284	63.950133	574.18	-715.48

2.4 Star Slots

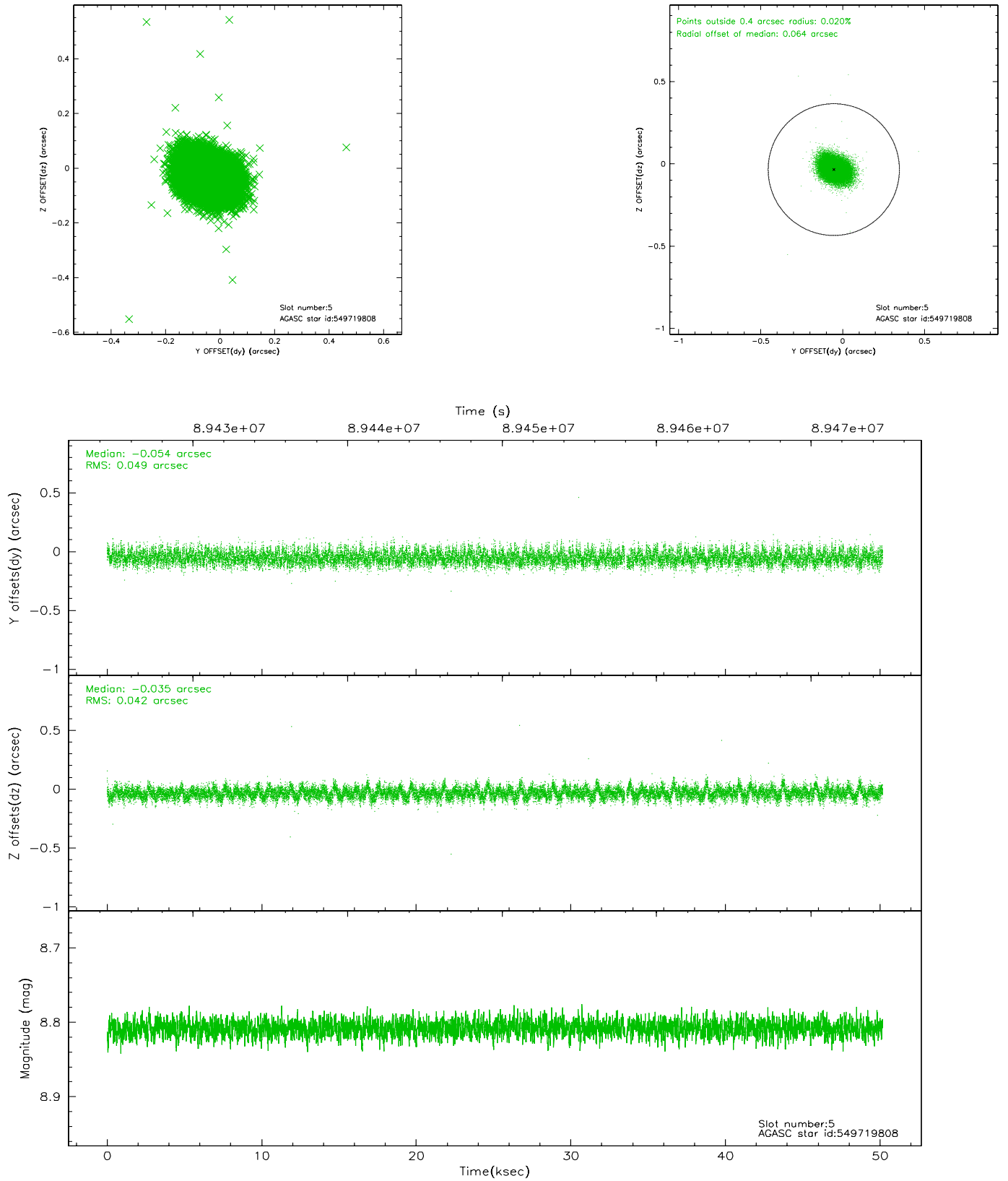
2.4.1 Slot 3



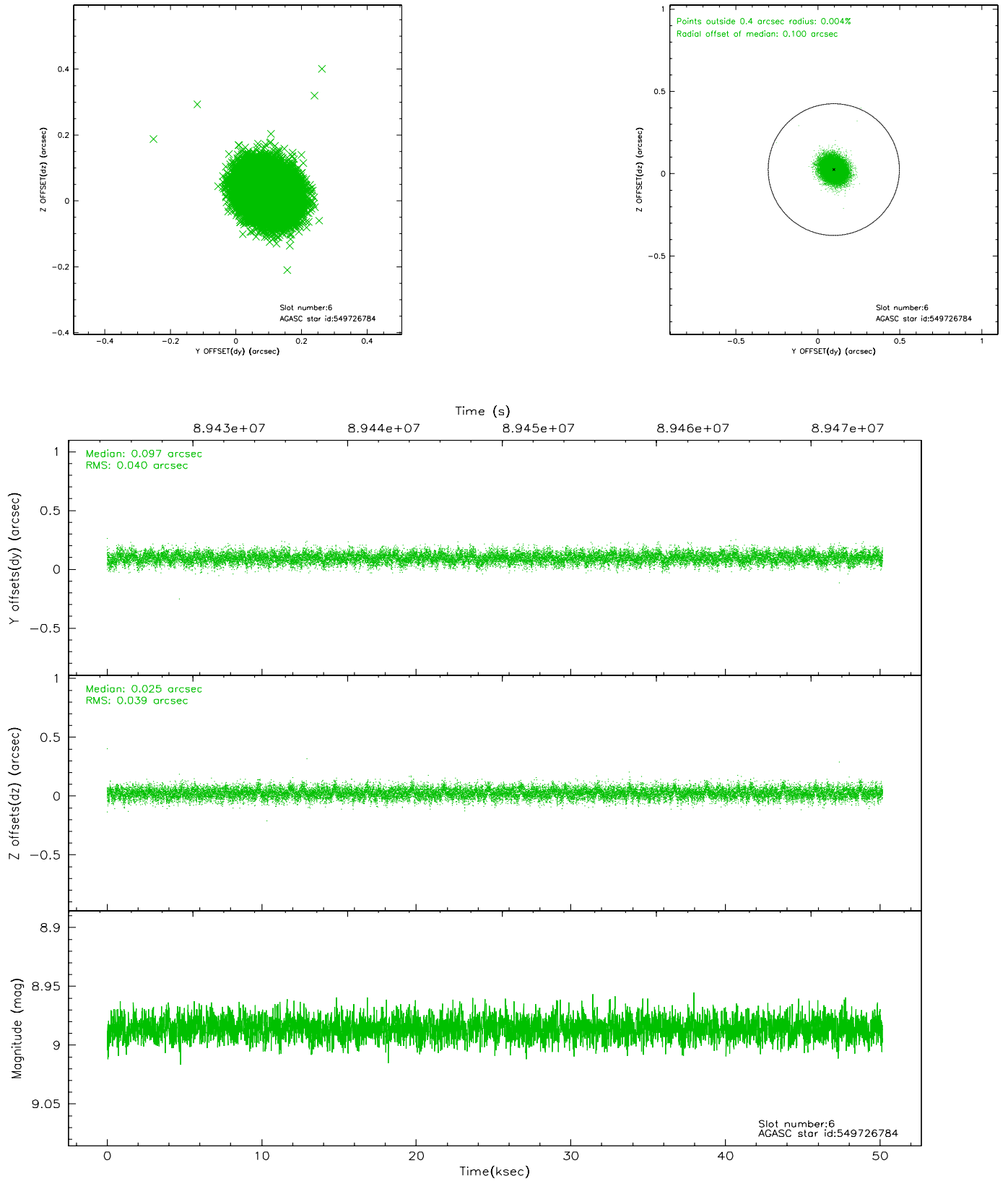
2.4.2 Slot 4



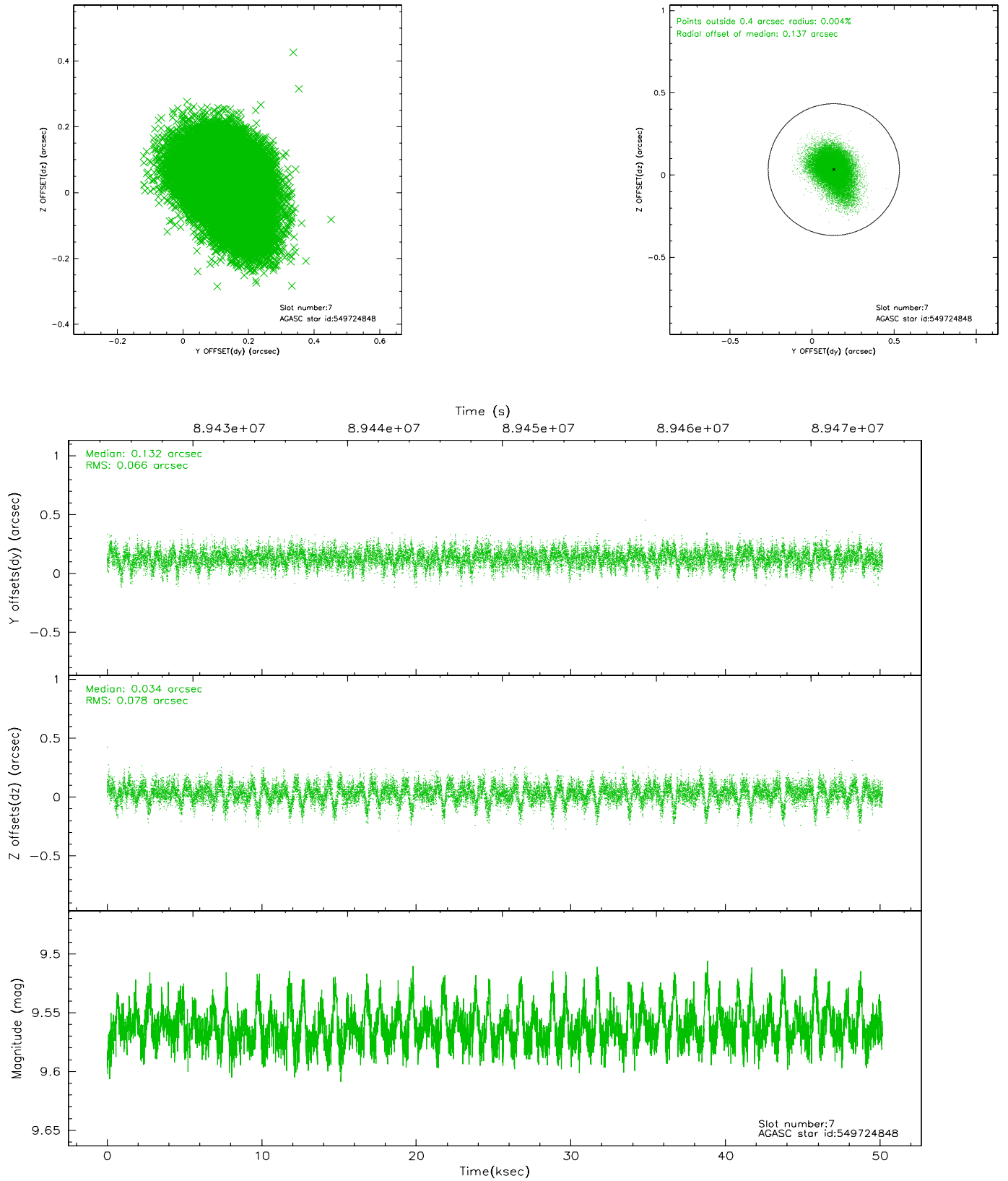
2.4.3 Slot 5



2.4.4 Slot 6

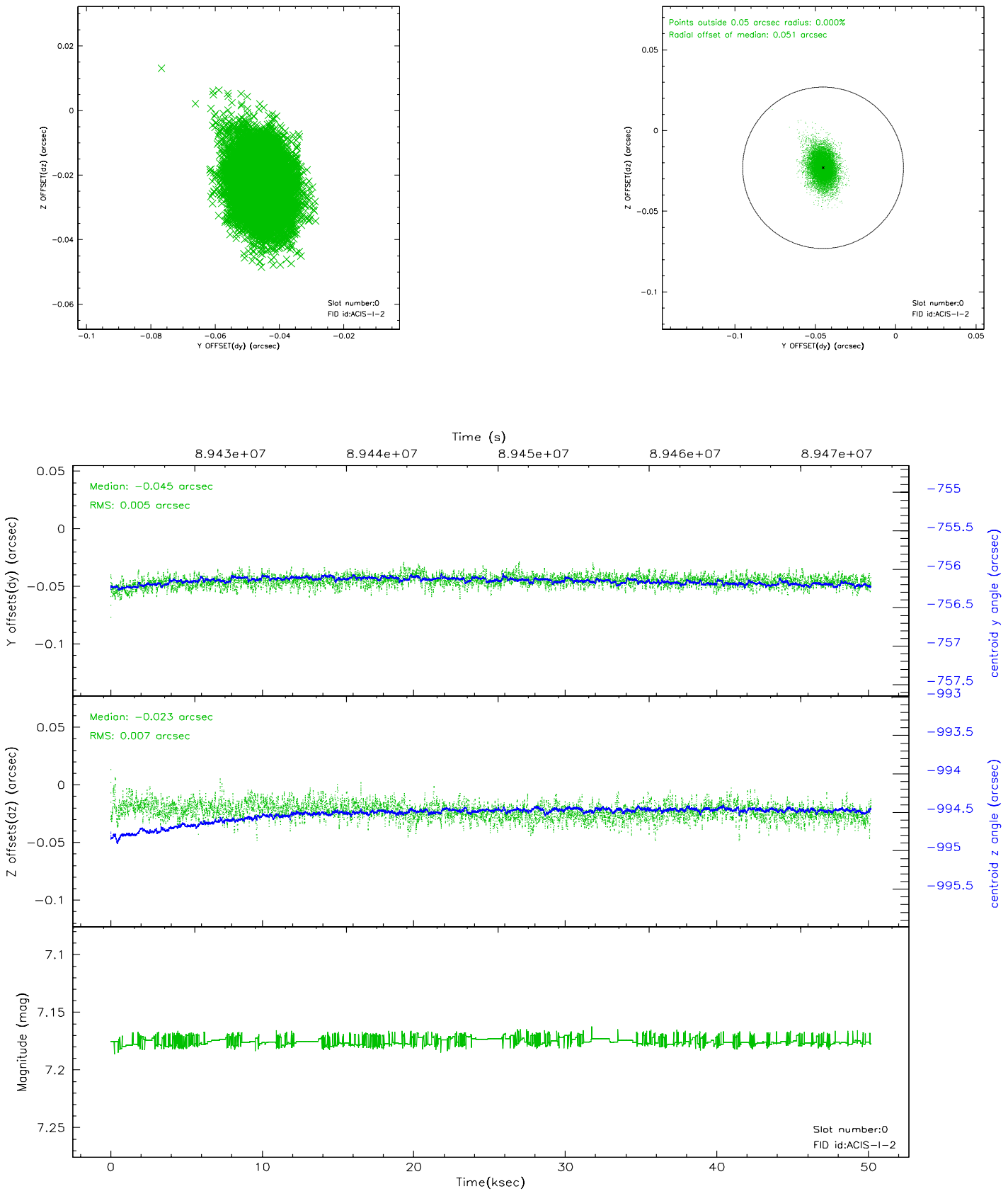


2.4.5 Slot 7

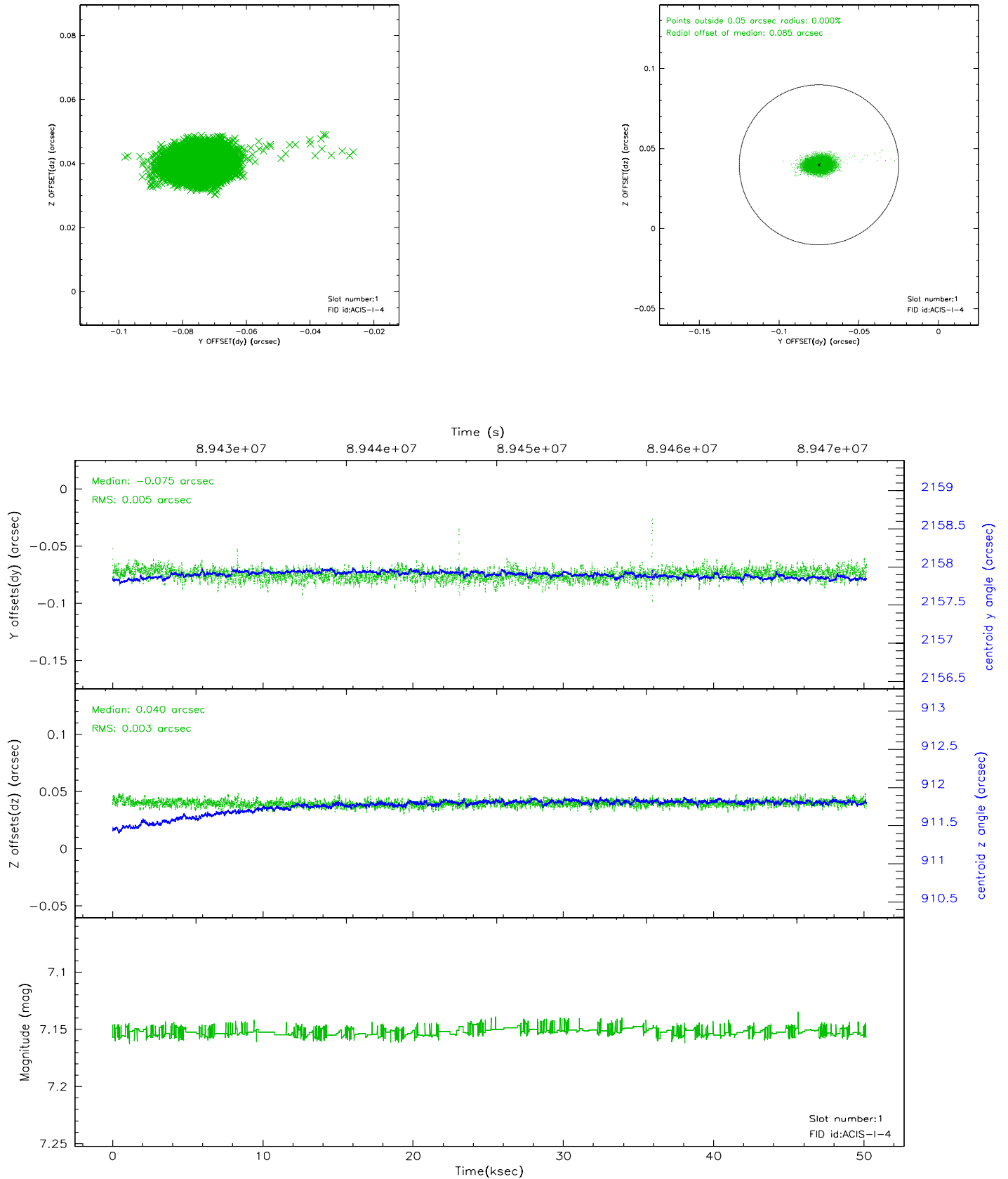


2.5 FID Slots

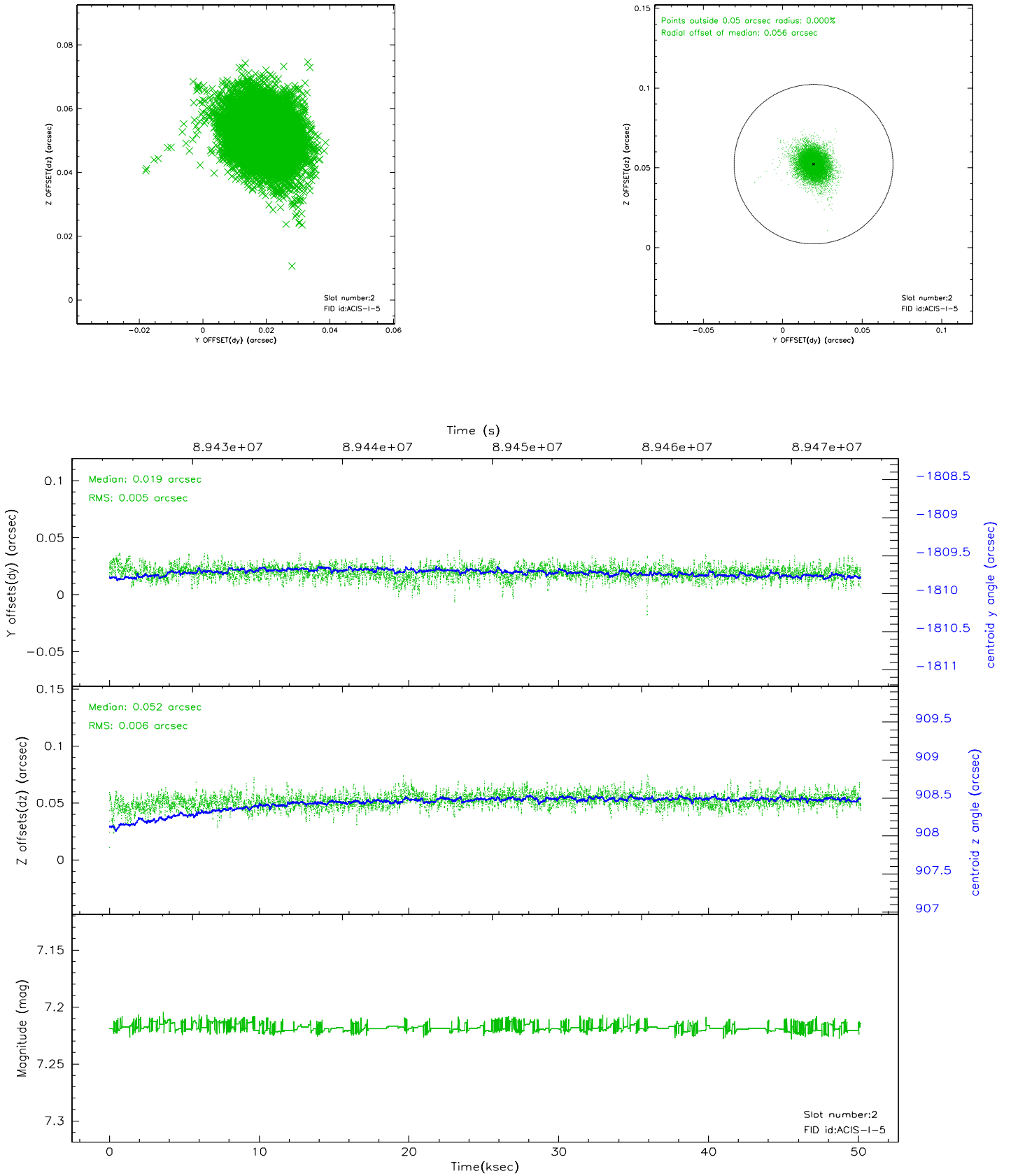
2.5.1 Slot 0



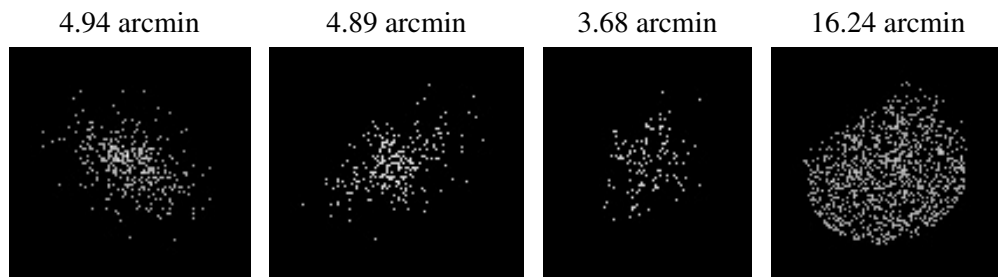
2.5.2 Slot 1



2.5.3 Slot 2



3 Point Sources



A Summary

A.1 Status

V&V Scientist	Jen Lauer
V&V Date (YYYY-MM-DD)	2007.06.14
V&V Edition	1
V&V Disposition and Status	OK
V&V Charge Time	50.163

A.2 Comments