

# V&V Reference Report

## L2 ASCDS Version : 7.6.10

Observation 535 - L2 Version 001  
Chandra X-Ray Center

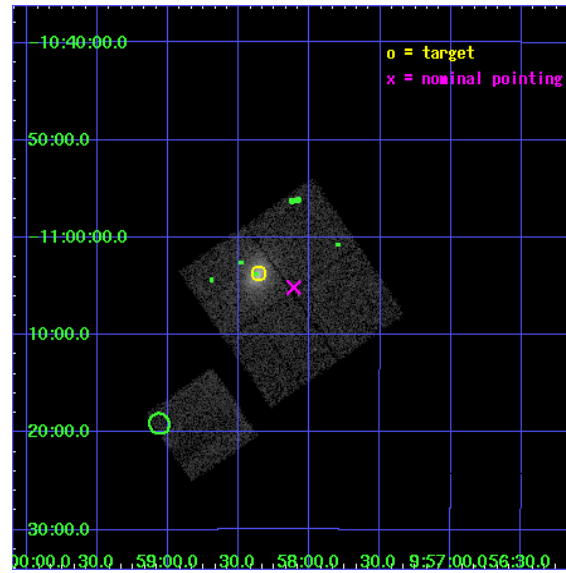
L2 Processing Date : May 27 2007

## Contents

<b>1</b>	<b>Front</b>	<b>2</b>
<b>2</b>	<b>OBI</b>	<b>3</b>
2.1	OBI . . . . .	3
2.1.1	Images . . . . .	3
2.1.2	Bias . . . . .	3
2.1.3	Parameters . . . . .	4
2.1.4	Events . . . . .	4
2.2	Compared Parameters . . . . .	5
2.3	Aspect . . . . .	6
2.4	Star Slots . . . . .	9
2.4.1	Slot 3 . . . . .	9
2.4.2	Slot 4 . . . . .	10
2.4.3	Slot 5 . . . . .	11
2.4.4	Slot 6 . . . . .	12
2.4.5	Slot 7 . . . . .	13
2.5	FID Slots . . . . .	14
2.5.1	Slot 0 . . . . .	14
2.5.2	Slot 1 . . . . .	15
2.5.3	Slot 2 . . . . .	16
<b>3</b>	<b>Point Sources</b>	<b>17</b>
<b>A</b>	<b>Summary</b>	<b>18</b>
A.1	Status . . . . .	18
A.2	Comments . . . . .	18

# 1 Front

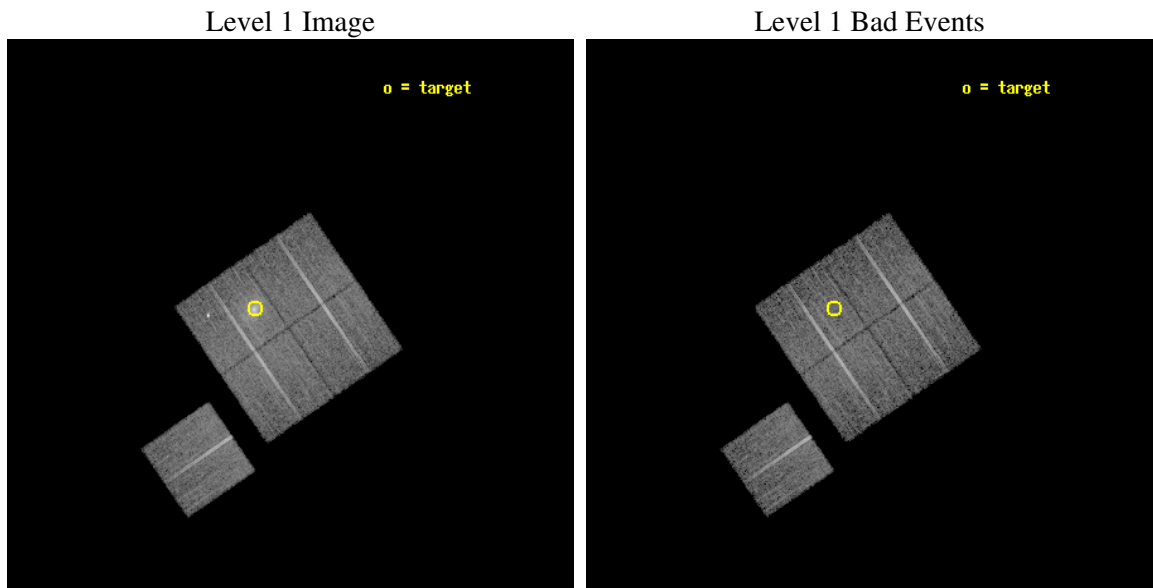
seq_num	800043
obs_id	535
title	DETERMINATION OF H0/Q0
observer	DR. LEON VANSPEYBROECK
object	A907
dtcycle	0
cycle	P
ra_targ	149.589
dec_targ	-11.061
ra_nom	149.52779694248
dec_nom	-11.085709744702
roll_nom	235.45988092281
revision	3
ontime	11094.400010332
livetime	10953.916037156
ontime0	11087.918079942
ontime1	11091.159020156
ontime2	11091.159060091
ontime3	11094.400010332
ontime6	11094.400010332
l2events	49477



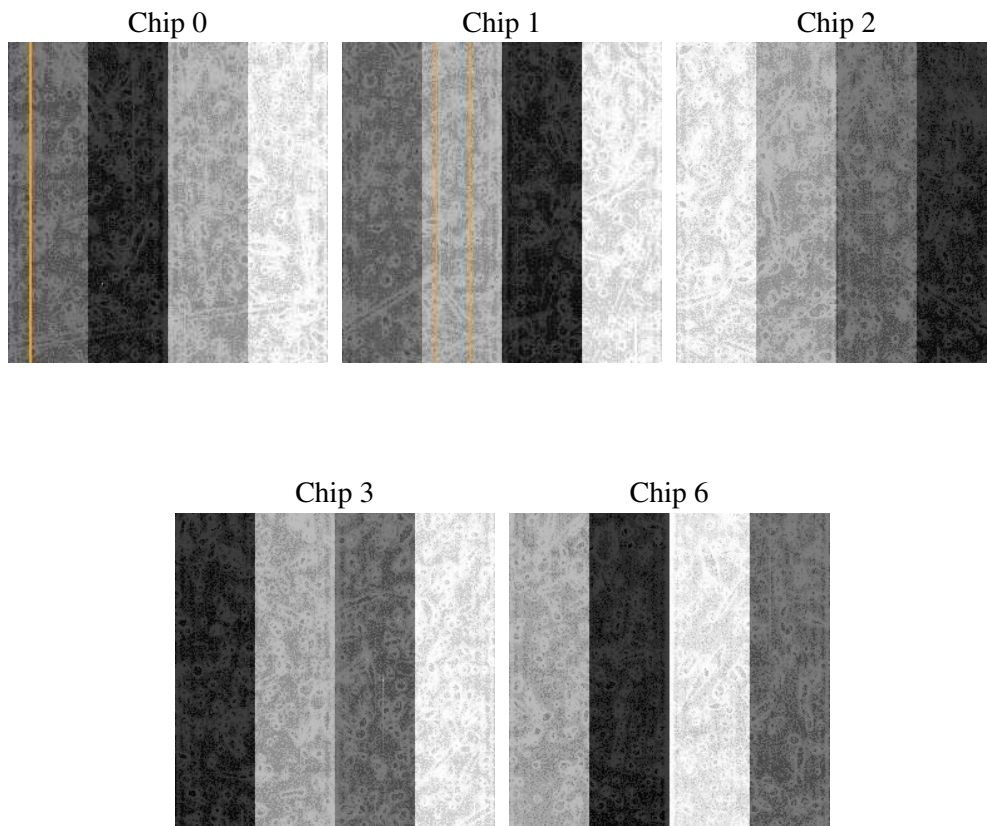
## 2 OBI

### 2.1 OBI

#### 2.1.1 Images



#### 2.1.2 Bias



### 2.1.3 Parameters

obi_num	0
ascdsver	7.6.10
caldbver	3.4.0
date	2007-05-27T12:30:49
revision	3

sched_exp_time	11000.000000
ontime	11094.400010332
ontime0	11087.918079942
ontime1	11091.159020156
ontime2	11091.159060091
ontime3	11094.400010332
ontime6	11094.400010332
l1events	367574

### 2.1.4 Events

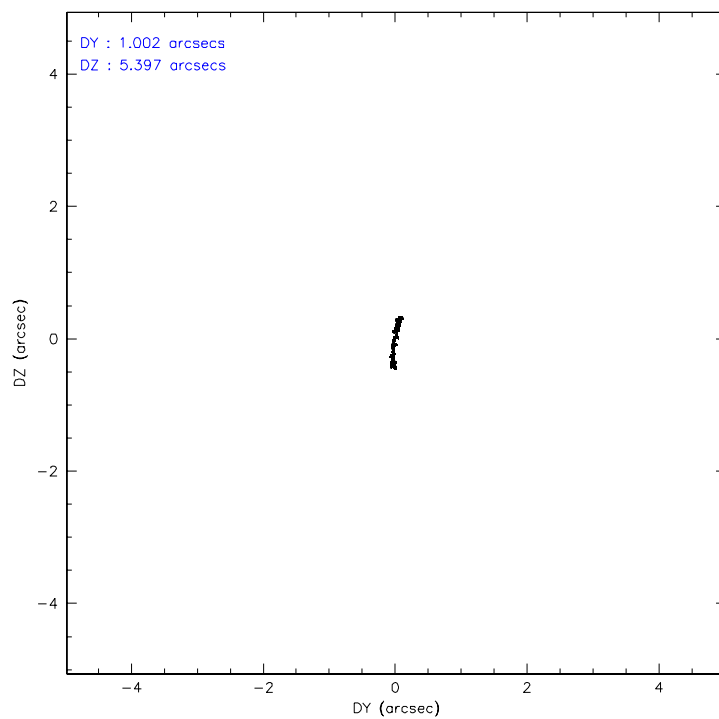
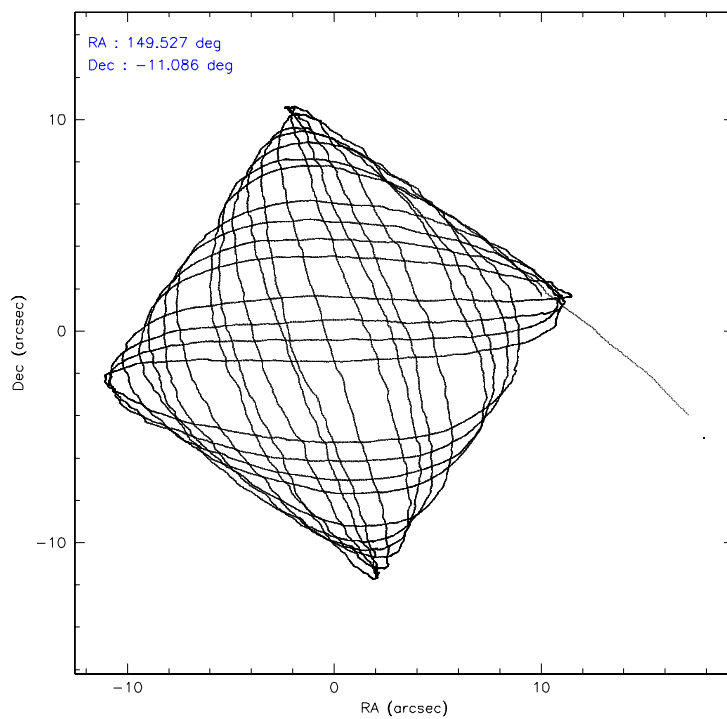
	ccd 0	ccd 1	ccd 2	ccd 3	ccd 6
level 1 events	68304	68517	72333	86254	72166
rejected events	59812	59053	64199	64025	64323
rejected %	87%	86%	88%	74%	89%

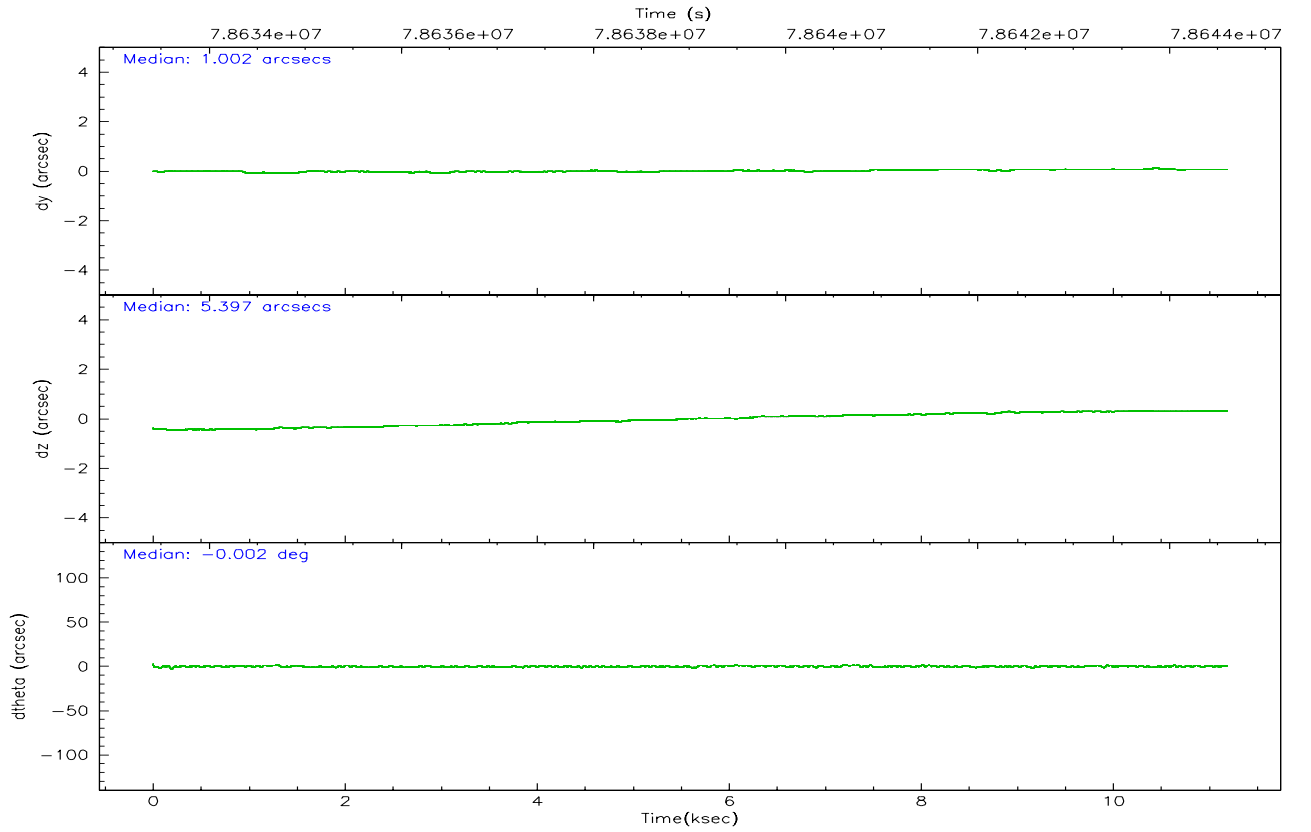
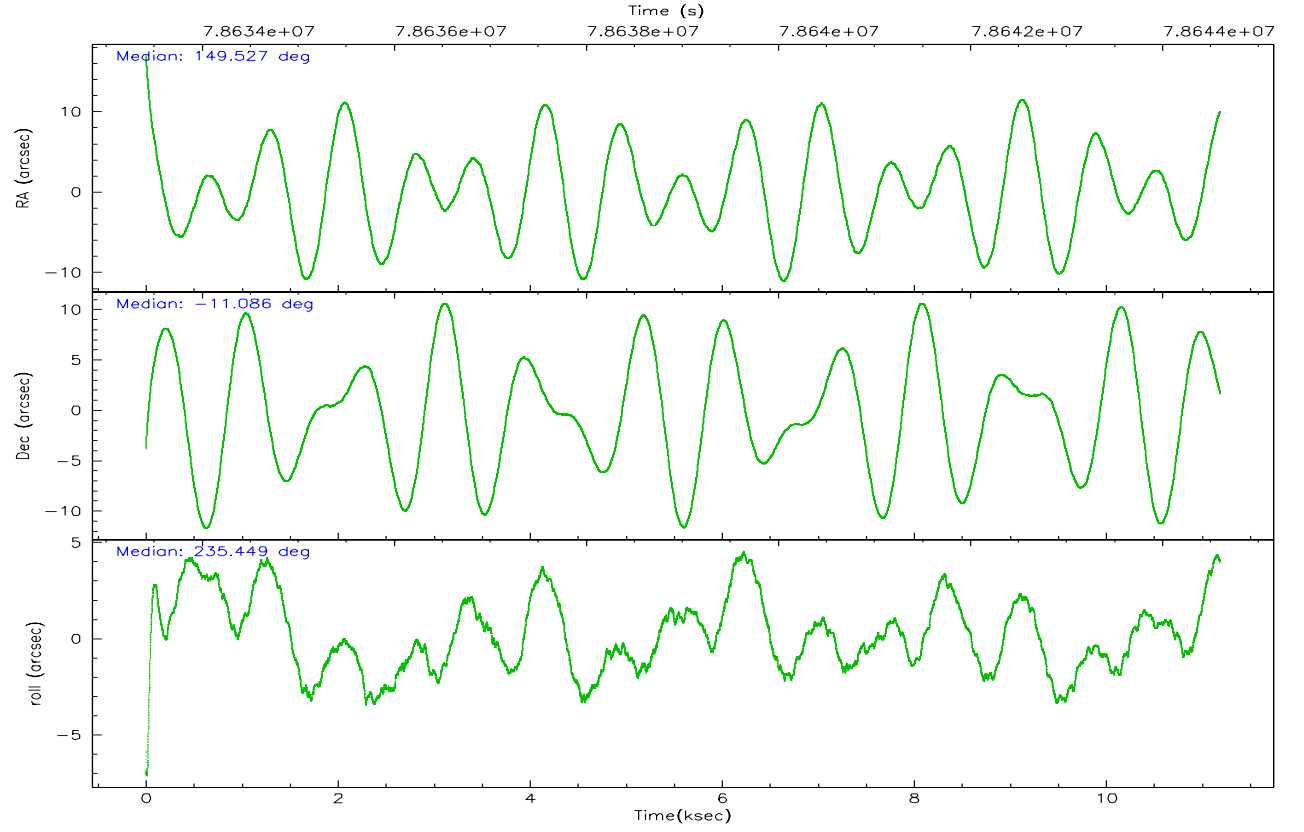
	ccd 0	ccd 1	ccd 2	ccd 3	ccd 6
grade 0 events	3648	4311	3553	15306	3244
	5%	6%	4%	17%	4%
grade 1 events	39	43	41	98	25
	0%	0%	0%	0%	0%
grade 2 events	1767	1789	1724	2945	1557
	2%	2%	2%	3%	2%
grade 3 events	833	921	787	1171	805
	1%	1%	1%	1%	1%
grade 4 events	789	866	797	1153	790
	1%	1%	1%	1%	1%
grade 5 events	2384	2395	2249	2564	2727
	3%	3%	3%	2%	3%
grade 6 events	1459	1584	1281	1667	1450
	2%	2%	1%	1%	2%
grade 7 events	57385	56608	61901	61350	61568
	84%	82%	85%	71%	85%

## 2.2 Compared Parameters

Parameter	Planned	Actual	Parameter	Planned	Actual
Instrument	ACIS	ACIS	Obspar format version number	6	6
Detector	ACIS-01236	ACIS-01236	Obspar file type	PREDICTED	ACTUAL
Grating	NONE	NONE	Obspar update status	NONE	UPDATED
Data mode	VFAINT	VFAINT	Number of optional ACIS chips dropped	0	0
Observation mode	POINTING	POINTING	On-chip summing requested	N	N
Pointing RA	149.530166	149.5277969424758	Subarray requested	NONE	NONE
Pointing Dec	-11.058277	-11.08570974470198	Alternating exposures requested	N	N
Pointing Roll	235.251672	235.4598809228125	Primary exposure time	3.200000	3.2
SIM focus pos (mm)	-0.782348	-0.7809083437167272			
SIM defocus (mm)	0	0.001439871863259334			
SIM translation stage pos (mm)	-236.532463	-236.5241547330508			
SIM translation stage offset (mm)	2.94	2.931701730121091			
Observation start time	78633603.184000	78632617.83369701			
Observation start date	2000-06-29T02:38:59	2000-06-29T02:23:37			
Observation end time	78644603.184000	78645311.434165			
Observation end date	2000-06-29T05:42:19	2000-06-29T05:55:11			
Read mode	TIMED	TIMED			

## 2.3 Aspect





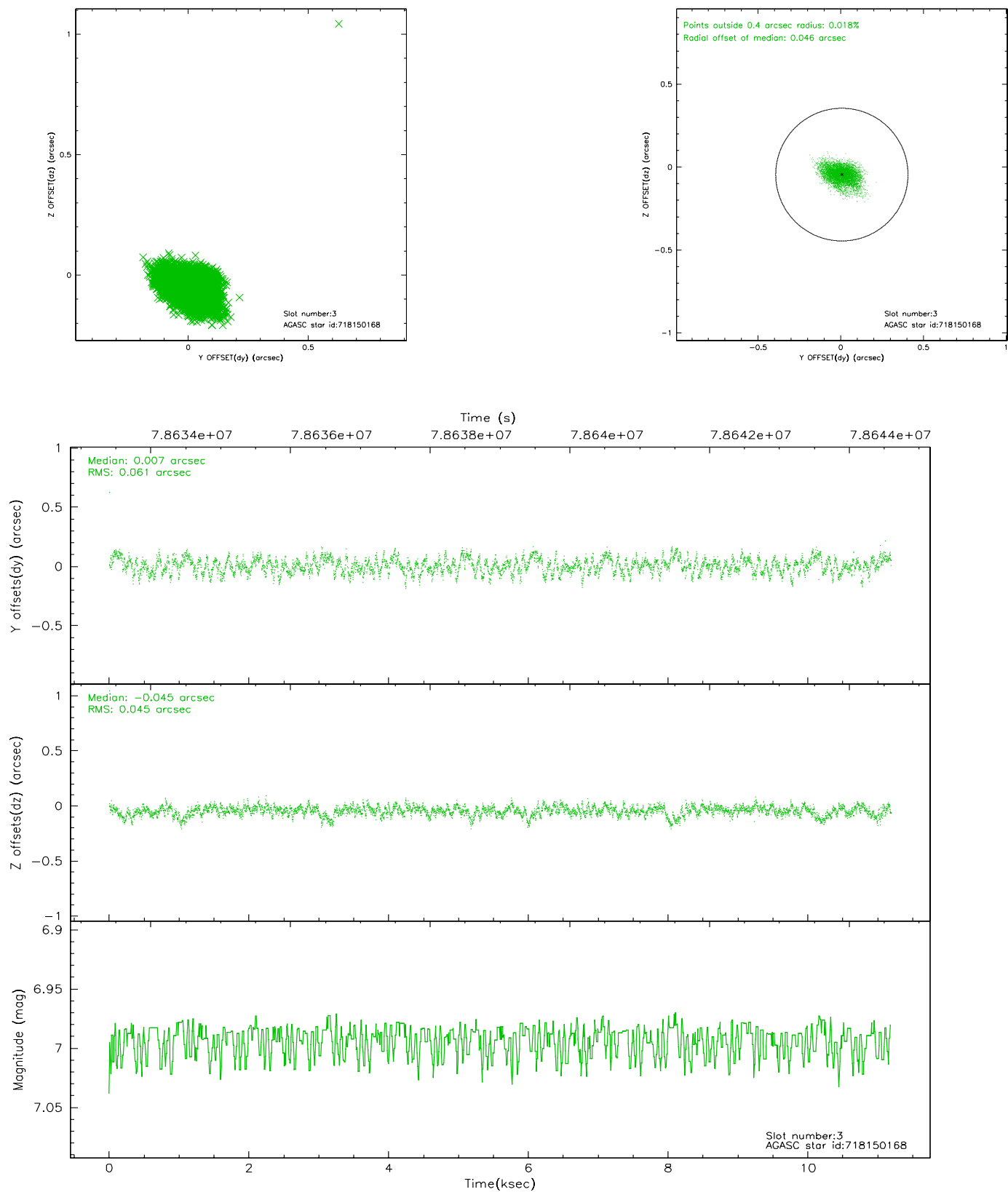
### Slot Statistics

slot	status	id	mag	n_pts	med_dy	med_dz	dr1	dr2	ra	dec	mean_y	mean_z
0	FID	ACIS-I-2	7.14	2729	0.006	0.001	0.009	0.016	0.000000	0.000000	-755.12	-775.14
1	FID	ACIS-I-4	7.21	2730	-0.082	0.008	0.007	0.013	0.000000	0.000000	2158.66	1130.84
2	FID	ACIS-I-5	7.23	2730	-0.025	0.060	0.010	0.016	0.000000	0.000000	-1808.54	1129.64
3	GUIDE	718150168	6.99	5460	0.007	-0.045	0.079	0.131	148.806680	-11.034344	1388.53	-2146.63
4	GUIDE	718279936	7.90	5459	-0.164	-0.025	0.066	0.114	149.904611	-10.701814	-1809.45	357.68
5	GUIDE	718280680	9.02	5460	-0.045	0.082	0.099	0.159	150.281588	-11.082151	-1441.34	2233.09
6	GUIDE	718280912	9.51	5457	-0.005	0.154	0.088	0.147	149.903458	-11.068058	-723.31	1105.65
7	GUIDE	718149600	9.74	5454	0.208	-0.165	0.121	0.199	148.724212	-11.209125	2071.33	-2025.39

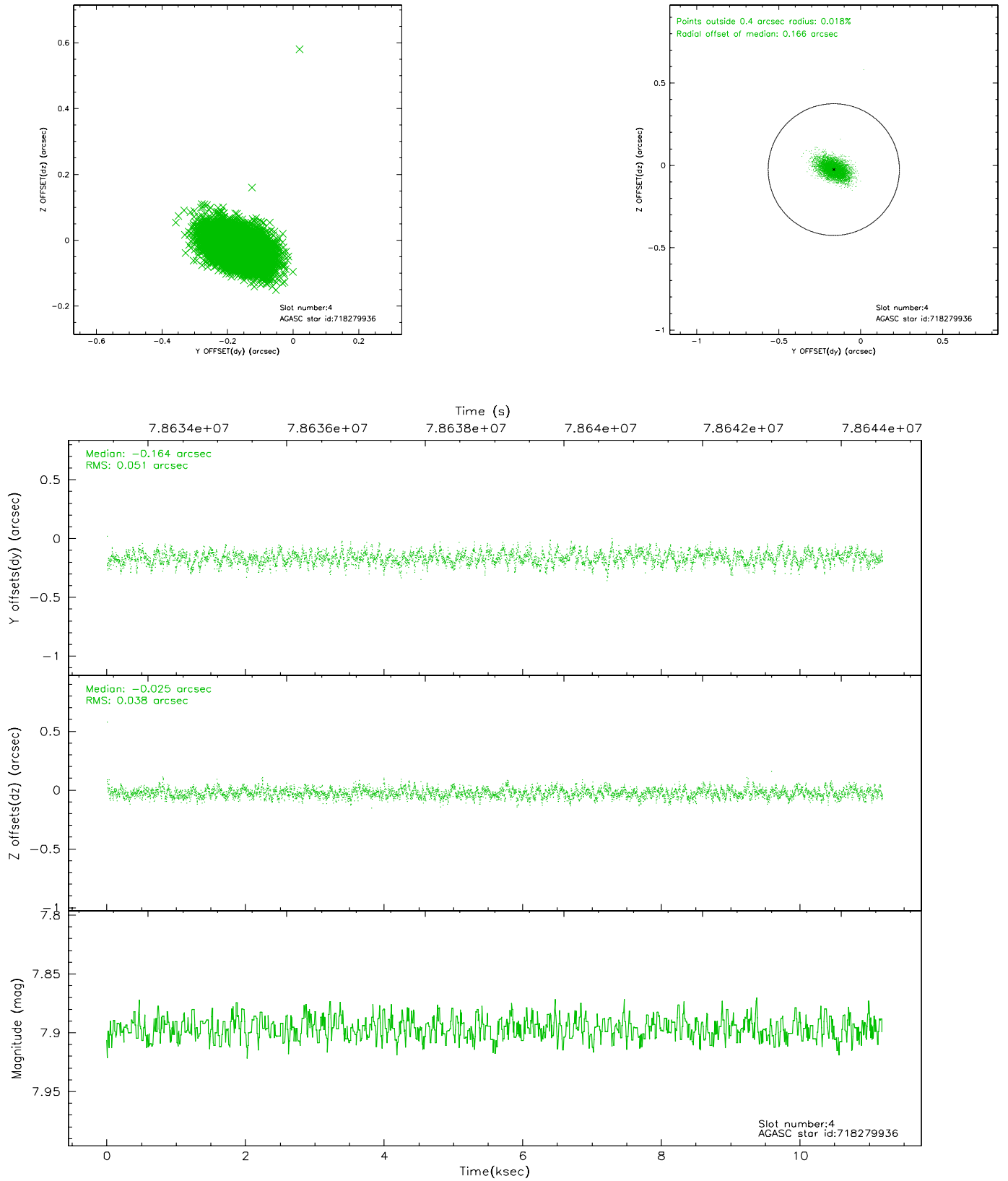


## 2.4 Star Slots

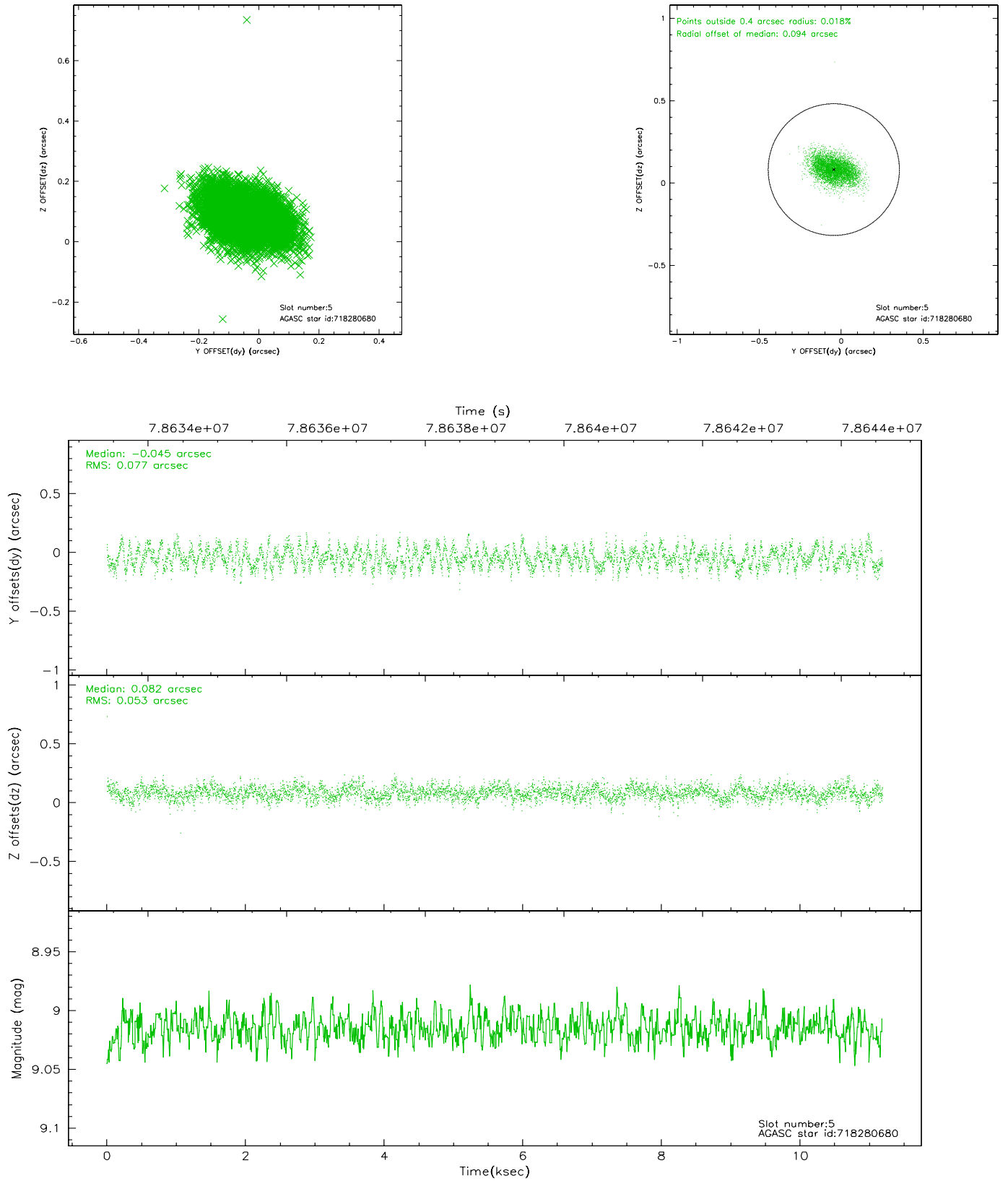
### 2.4.1 Slot 3



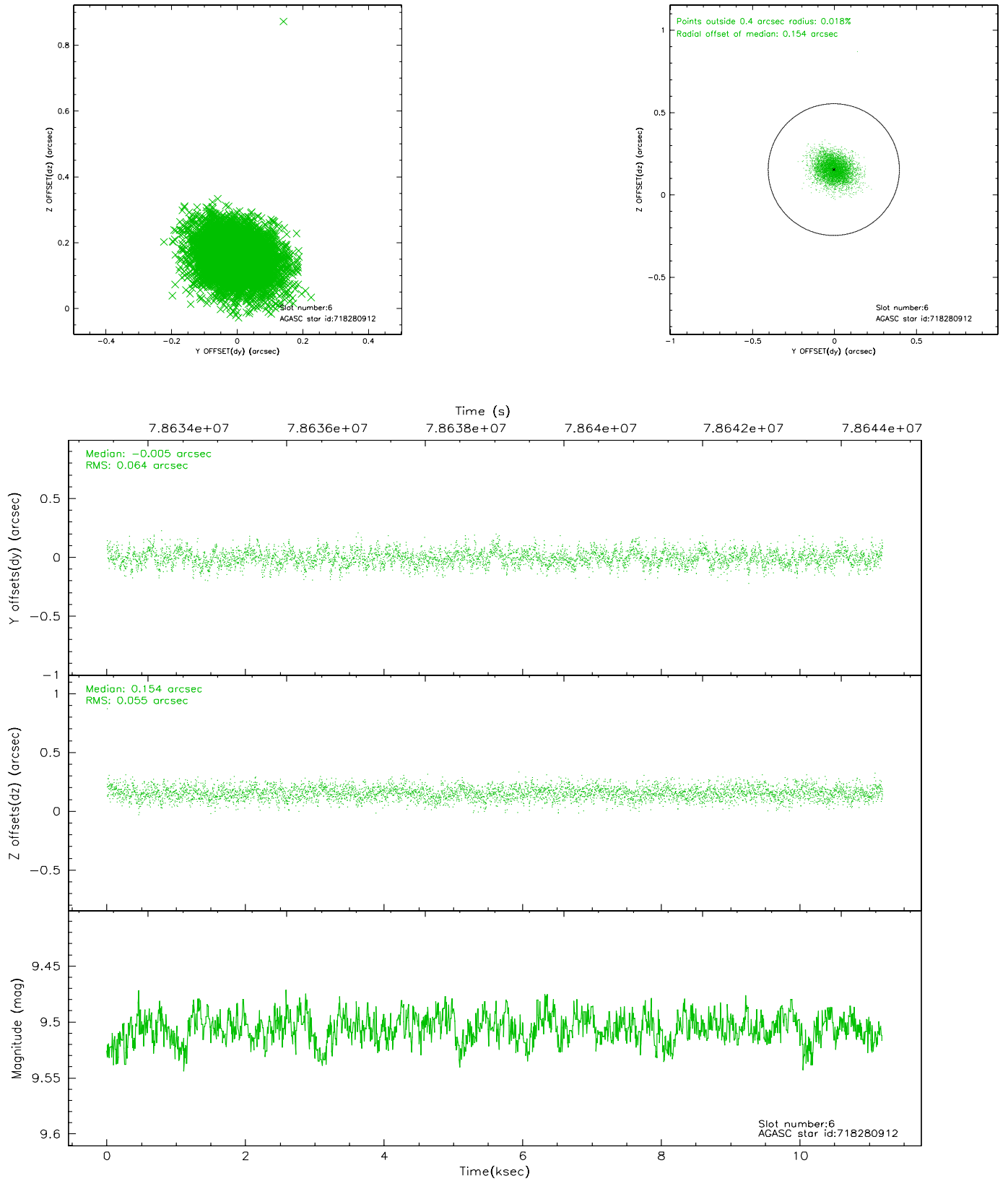
## 2.4.2 Slot 4



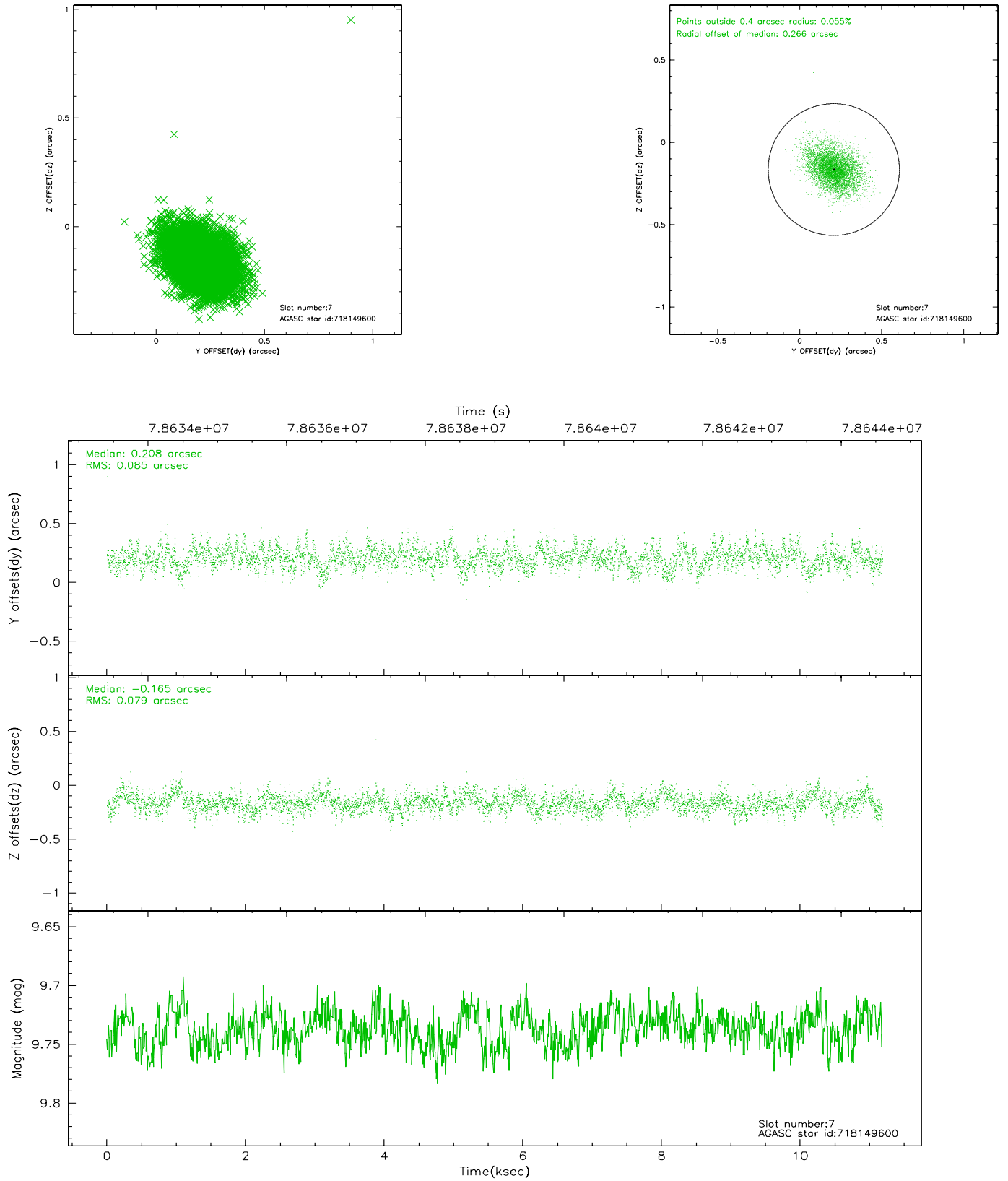
### 2.4.3 Slot 5



## 2.4.4 Slot 6

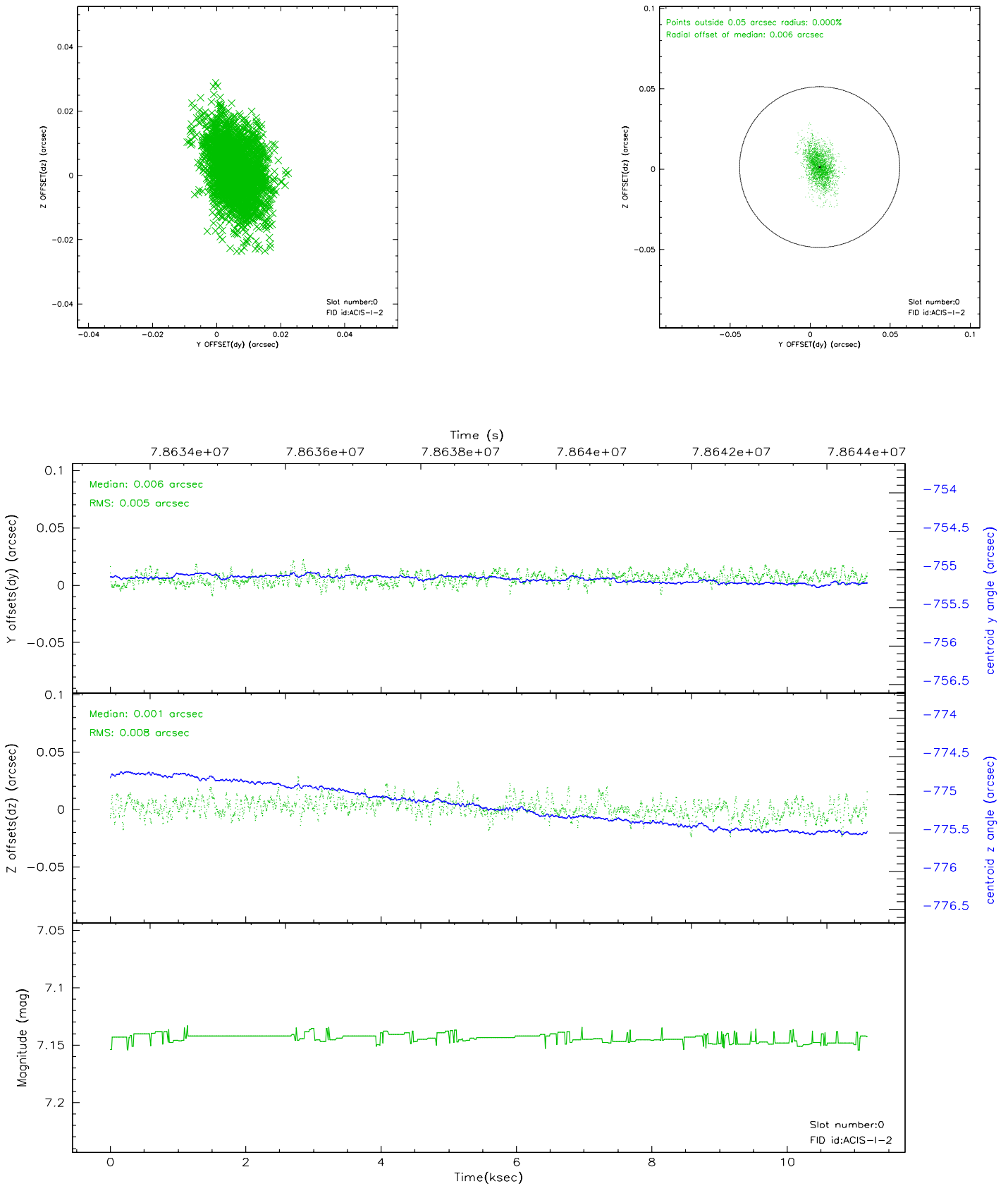


## 2.4.5 Slot 7

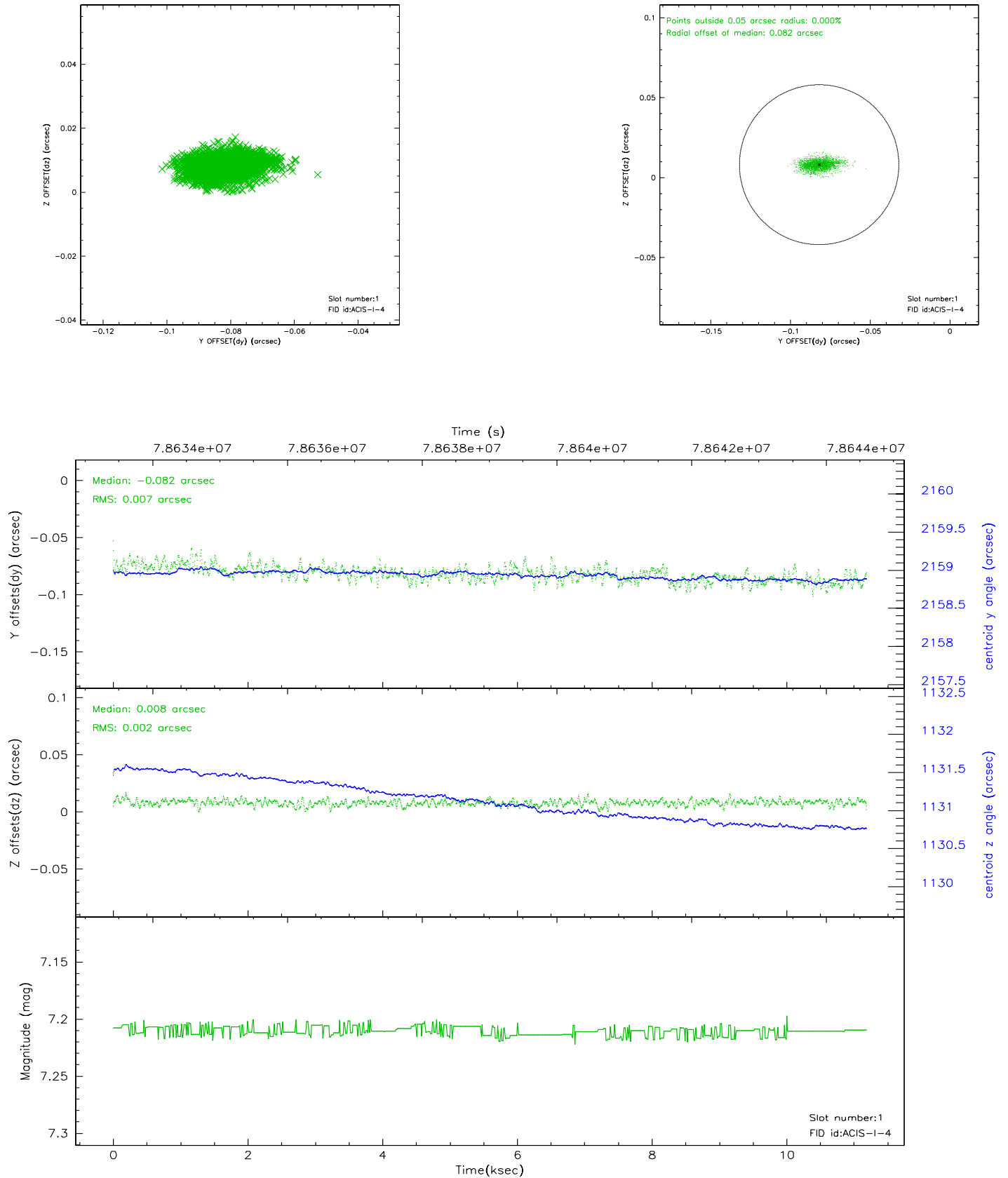


## 2.5 FID Slots

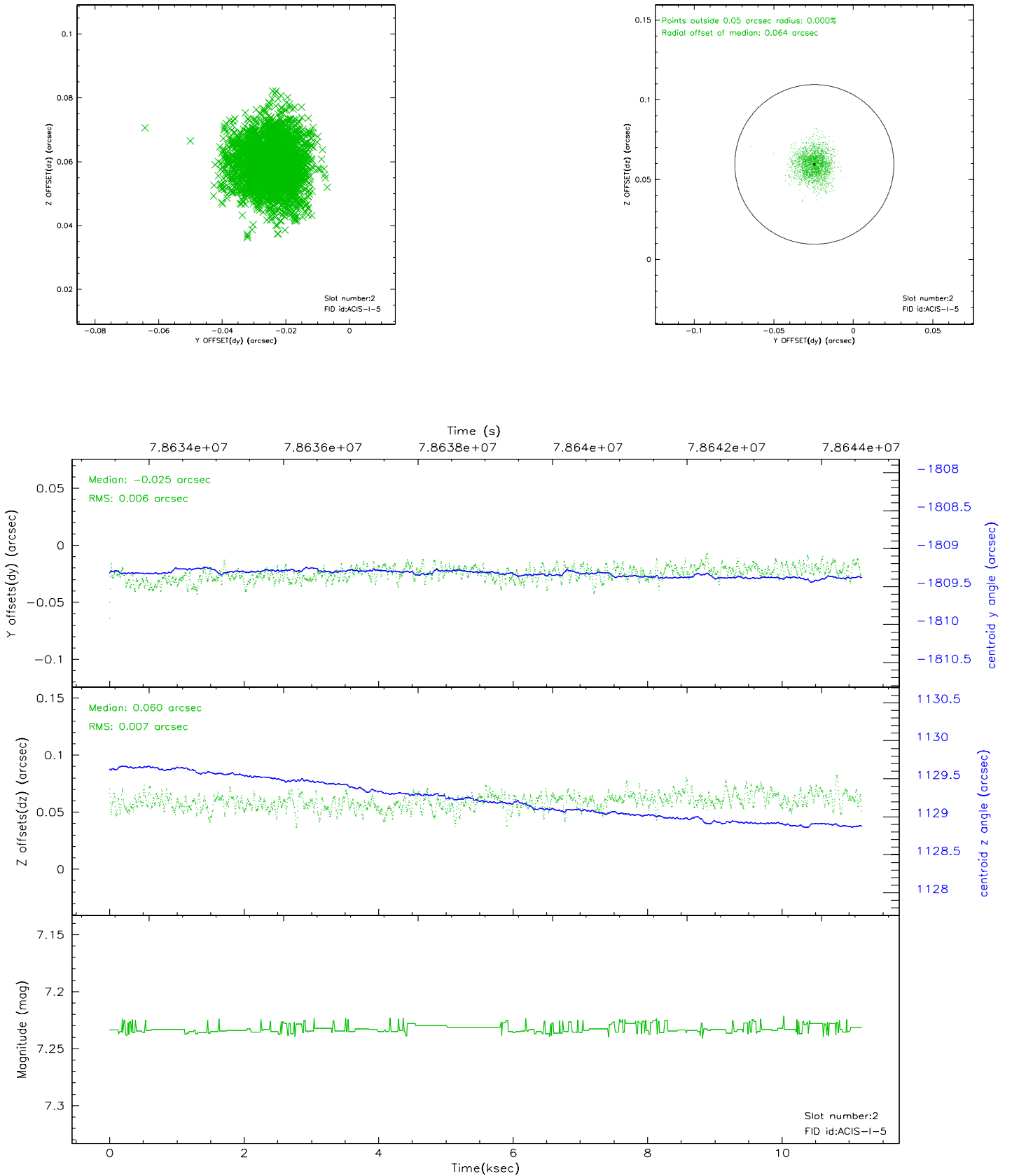
### 2.5.1 Slot 0



## 2.5.2 Slot 1

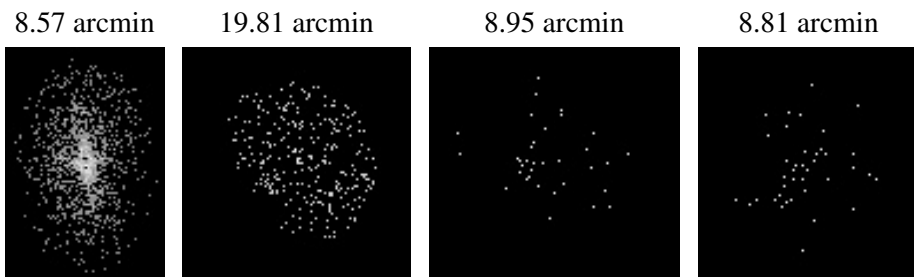


### 2.5.3 Slot 2





### 3 Point Sources



## A Summary

### A.1 Status

V&V Scientist	Jen Lauer
V&V Date (YYYY-MM-DD)	2007.05.27
V&V Edition	1
V&V Disposition and Status	OK
V&V Charge Time	11.1

### A.2 Comments