

V&V Reference Report

L2 ASCDS Version : 8.4.5

Observation 528 - L2 Version 3
Chandra X-Ray Center

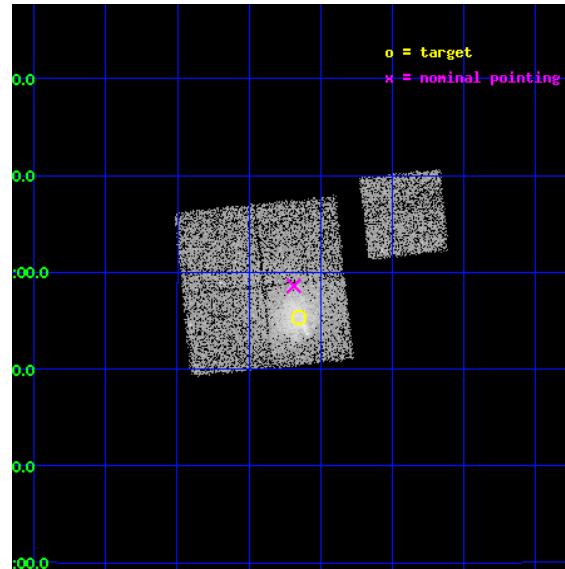
L2 Processing Date : Sep 2 2012

Contents

1	Front	2
2	OBI	3
2.1	OBI	3
2.1.1	Images	3
2.1.2	Bias	3
2.1.3	Parameters	4
2.1.4	Events	4
2.2	Compared Parameters	5
2.3	Aspect	6
2.4	Star Slots	9
2.4.1	Slot 3	9
2.4.2	Slot 4	10
2.4.3	Slot 5	11
2.4.4	Slot 6	12
2.4.5	Slot 7	13
2.5	FID Slots	14
2.5.1	Slot 0	14
2.5.2	Slot 1	15
2.5.3	Slot 2	16
A	Summary	17
A.1	Status	17
A.2	Comments	17

1 Front

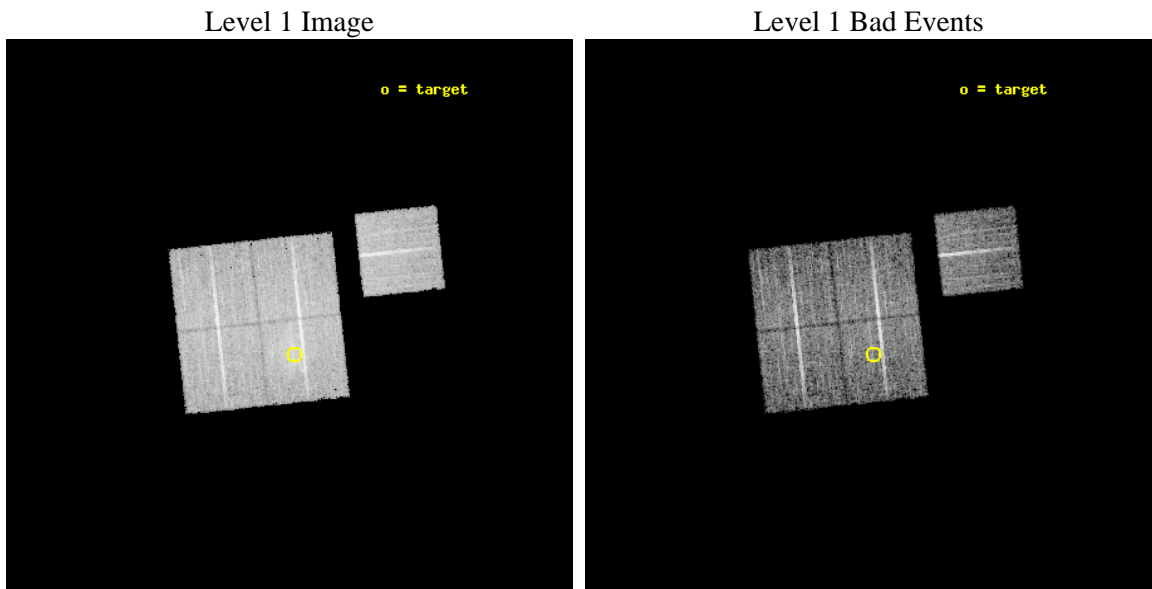
seq_num	800036	Sequence number
obs_id	528	Observation id
title	DETERMINATION OF H0/Q0	Proposal title
observer	DR. LEON VANSPEYBROECK	Principal investigator
object	A520	Source name
dtcycle	0	
cycle	P	events from which exps? Prim/Second/Both
ra_targ	73.538579	Observer's specified target RA [deg]
dec_targ	2.922708	Observer's specified target Dec [deg]
ra_nom	73.546437164551	Nominal RA [deg]
dec_nom	2.9766661993302	Nominal Dec [deg]
roll_nom	83.907504499288	Nominal Roll [deg]
revision	3	Processing version of data
ontime	9589.4788028002	Sum of GTIs [s]
livetime	9468.0510481082	Livetime [s]
ontime0	9586.1147225648	Sum of GTIs [s]
ontime1	9589.3967227936	Sum of GTIs [s]
ontime2	9589.4377627969	Sum of GTIs [s]
ontime3	9589.4788028002	Sum of GTIs [s]
ontime6	9589.3146428019	Sum of GTIs [s]
l2events	38010	Number of level 2 events



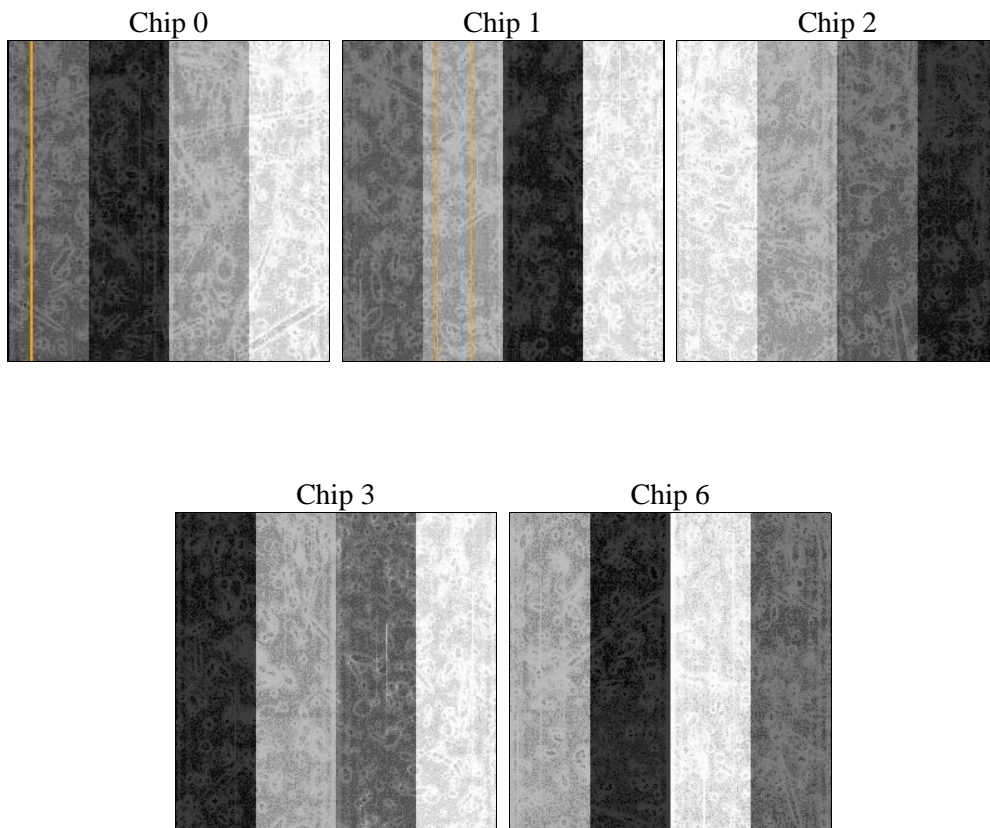
2 OBI

2.1 OBI

2.1.1 Images



2.1.2 Bias



2.1.3 Parameters

obi_num	0	Obi number	sched_exp_time	9500.000000	[s] Scheduled observation exposure time
ascdsver	8.4.5	Processing system revision	ontime	9589.4788028002	Sum of GTIs [s]
caldsver	4.5.1.1	 	ontime0	9586.1147225648	Sum of GTIs [s]
date	2012-09-02T09:40:02	Date and time of file creation	ontime1	9589.3967227936	Sum of GTIs [s]
revision	3	Processing version of data	ontime2	9589.4377627969	Sum of GTIs [s]
			ontime3	9589.4788028002	Sum of GTIs [s]
			ontime6	9589.3146428019	Sum of GTIs [s]
			l1events	298572	Number of level 1 events

2.1.4 Events

	ccd 0	ccd 1	ccd 2	ccd 3	ccd 6
level 1 events	57238	55322	60877	67455	57680
rejected events	50150	48012	53888	51869	51339
rejected %	87%	86%	88%	76%	89%

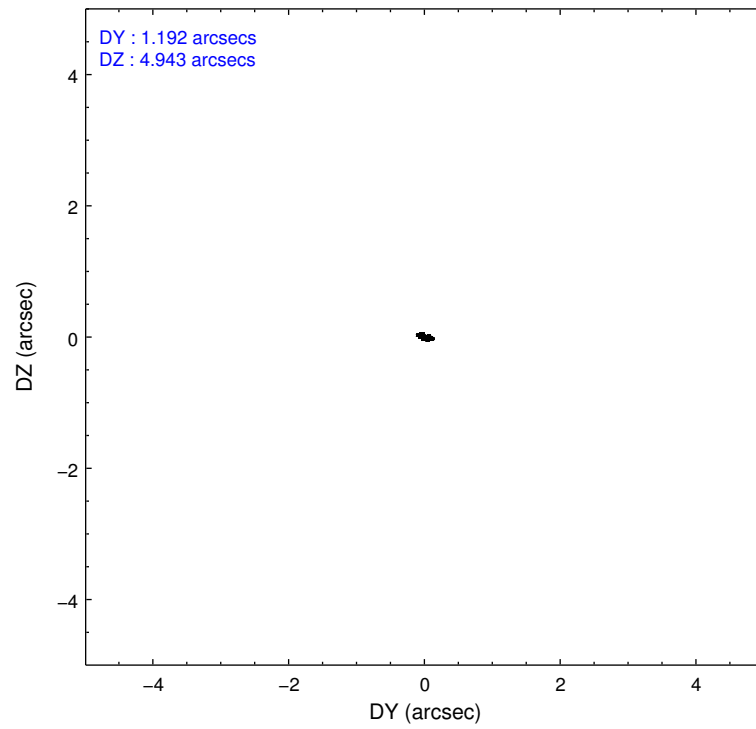
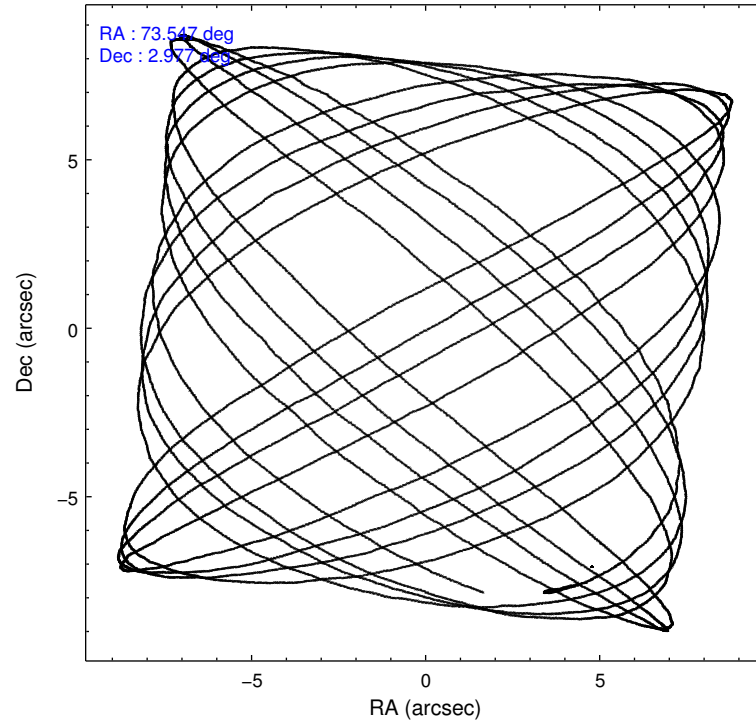
	ccd 0	ccd 1	ccd 2	ccd 3	ccd 6
grade 0 events	3065	3198	3122	10210	2503
	5%	5%	5%	15%	4%
grade 1 events	29	28	31	60	23
	0%	0%	0%	0%	0%
grade 2 events	1506	1403	1408	2252	1280
	2%	2%	2%	3%	2%
grade 3 events	705	709	671	921	654
	1%	1%	1%	1%	1%
grade 4 events	664	712	637	879	663
	1%	1%	1%	1%	1%
grade 5 events	1984	2249	1994	2278	2284
	3%	4%	3%	3%	3%
grade 6 events	1149	1292	1154	1329	1245
	2%	2%	1%	1%	2%
grade 7 events	48136	45731	51860	49526	49028
	84%	82%	85%	73%	85%

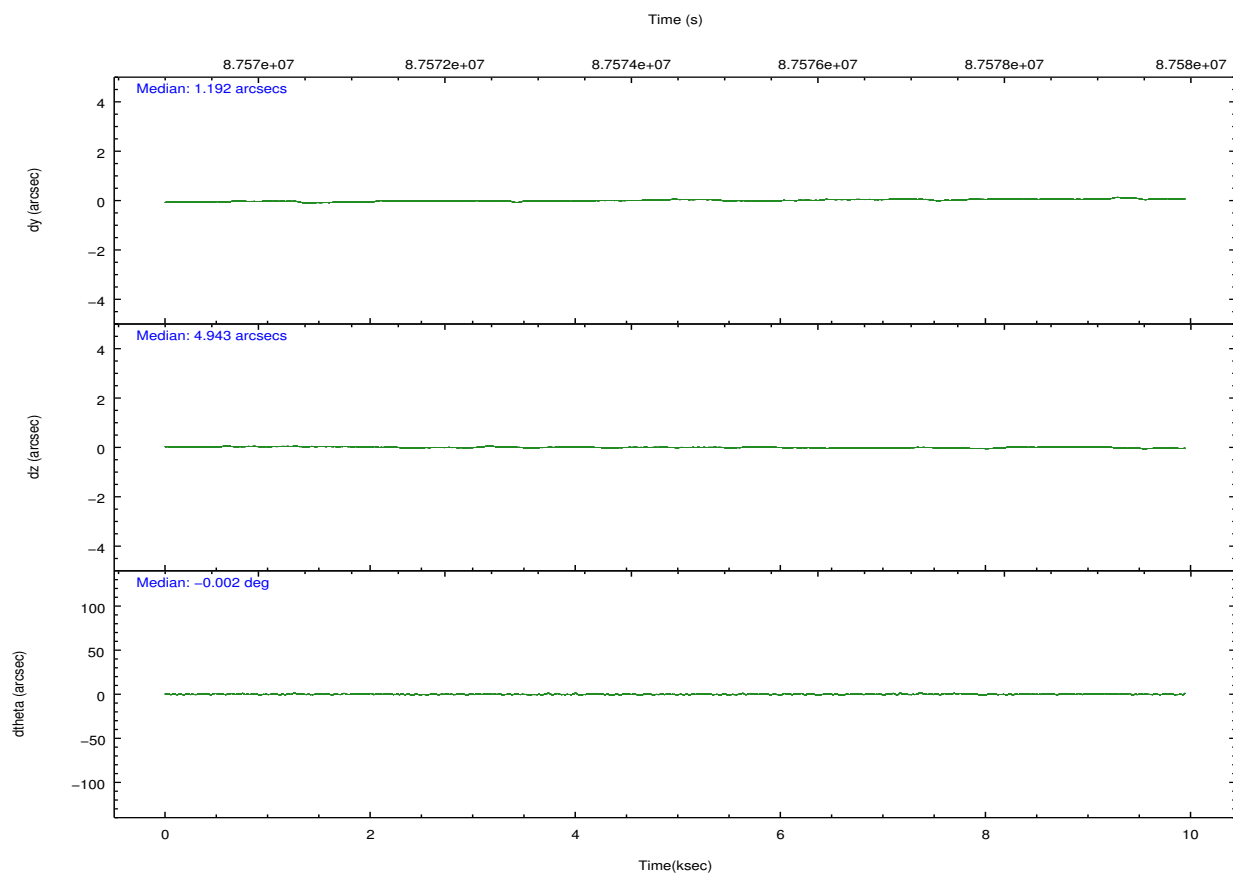
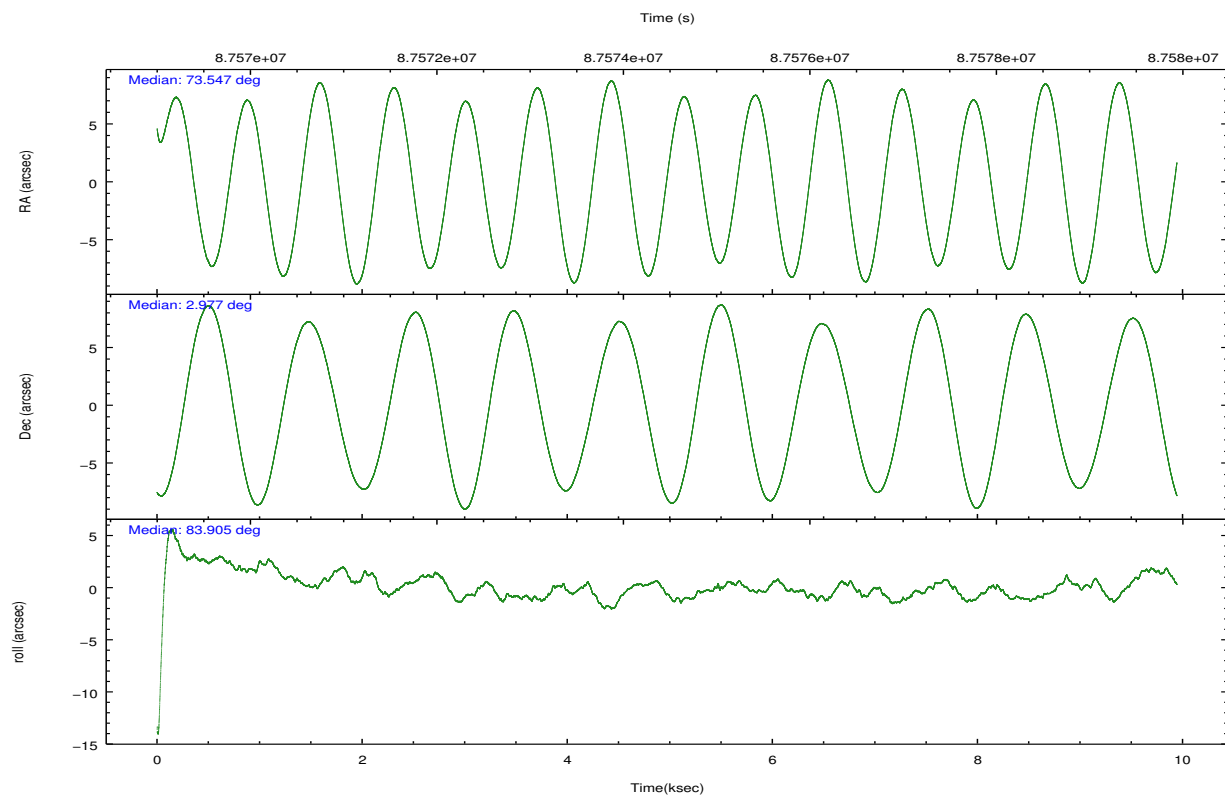
2.2 Compared Parameters

Parameter	Planned	Actual
Instrument	ACIS	ACIS
Detector	ACIS-01236	ACIS-01236
Grating	NONE	NONE
Data mode	VFAINT	VFAINT
Observation mode	POINTING	POINTING
[deg] Pointing RA	73.557541	73.54643716455134
[deg] Pointing Dec	2.951477	2.976666199330167
[deg] Pointing Roll	83.698258	83.90750449928782
[mm] SIM focus pos	-0.782348	-0.7809083437167272
[mm] SIM defocus	0	0.001439871863259334
[mm] SIM translation stage pos	-225.840463	-225.8458576473255
[mm] SIM translation stage offset	-7.752	-7.746595355604228
[s] Observation start time (MET)	87569941.184000	87568855.68014701
Observation start date	2000-10-10T12:57:57	2000-10-10T12:40:55
[s] Observation end time (MET)	87579441.184000	87580112.743072
Observation end date	2000-10-10T15:36:17	2000-10-10T15:48:32
Read mode	TIMED	TIMED

Parameter	Planned	Actual
Obspar format version number	7	7
Obspar file type	PREDICTED	ACTUAL
Obspar update status	NONE	UPDATED
Number of optional ACIS chips dropped	0	0
On-chip summing requested	N	N
Subarray requested	NONE	NONE
Alternating exposures requested	N	N
[s] Primary exposure time	0.000000	3.2

2.3 Aspect



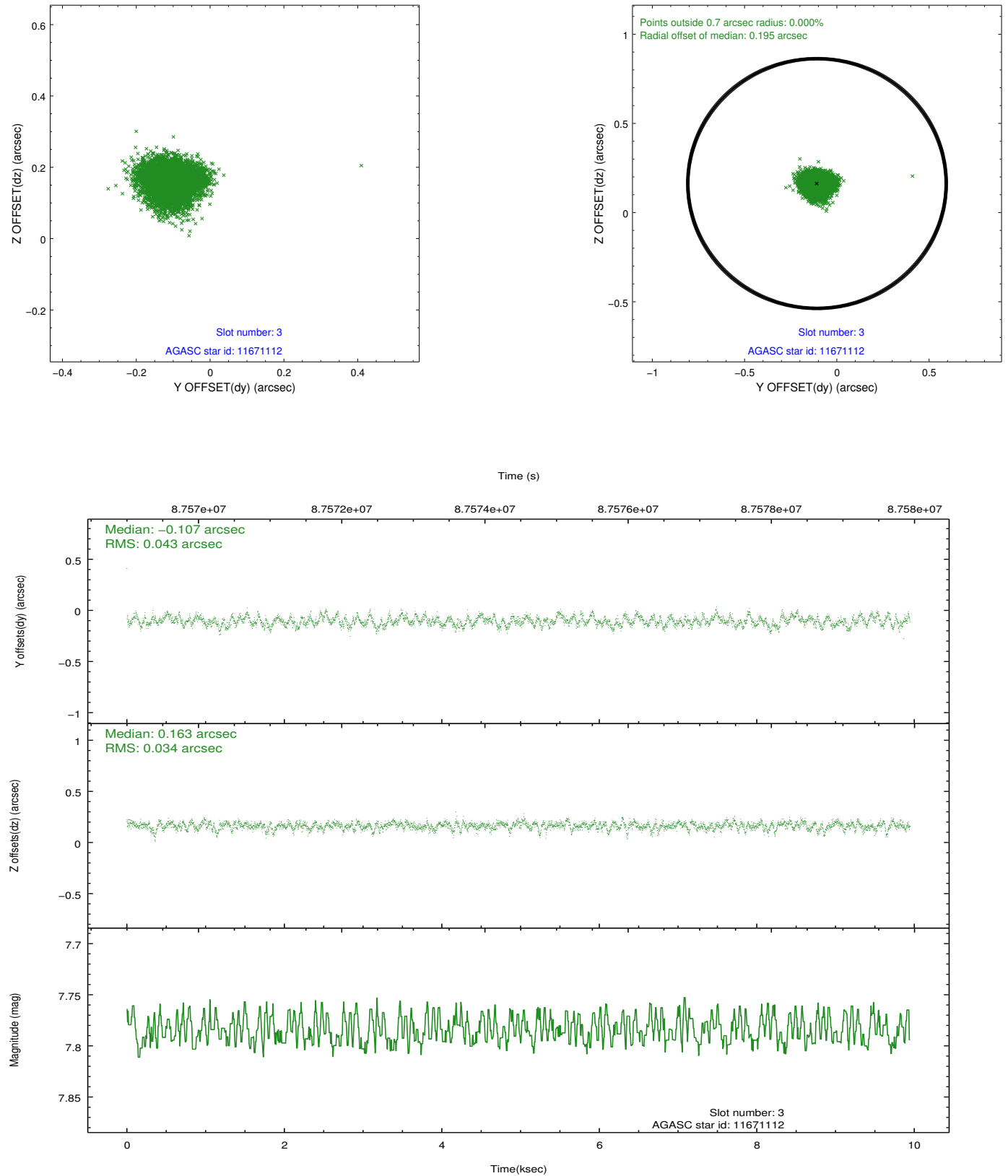


Slot Statistics

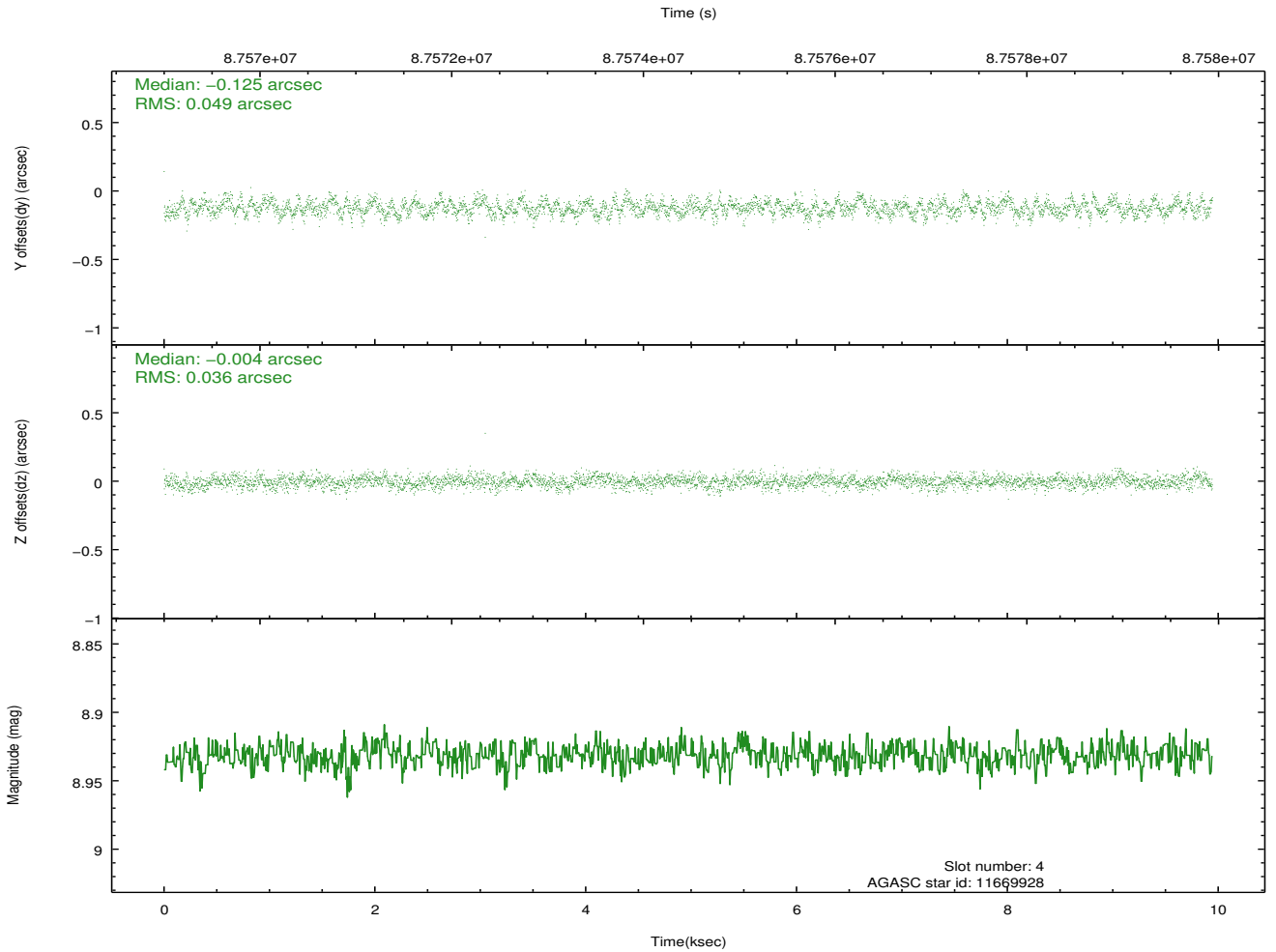
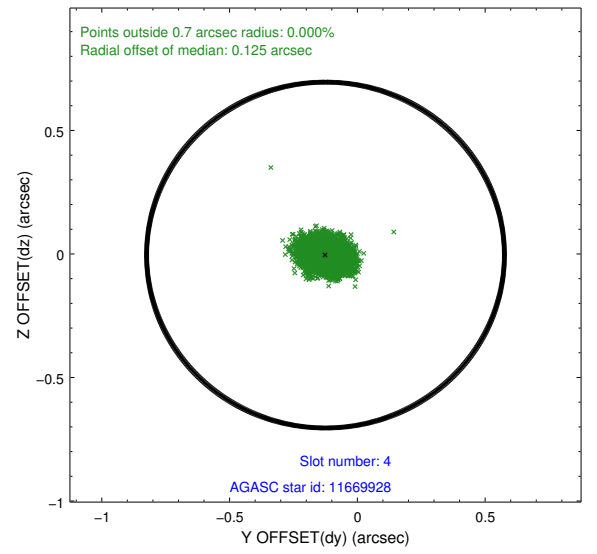
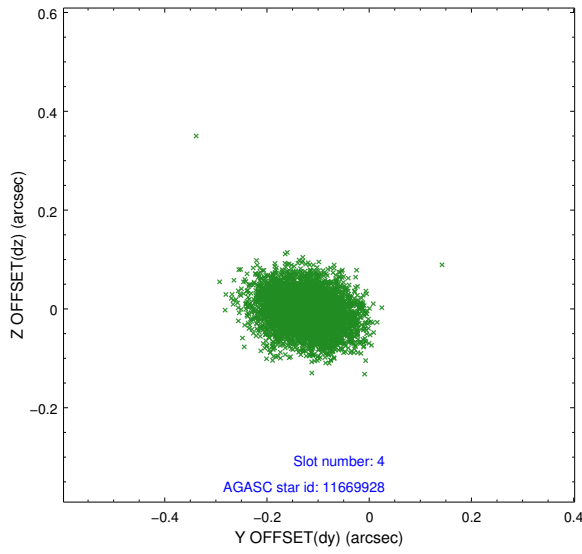
slot	status	id	mag	n_pts	med_dy	med_dz	dr1	dr2	ra	dec	mean_y	mean_z
0	FID	ACIS-I-1	7.23	2425	0.058	-0.026	0.006	0.011	0.000000	0.000000	938.56	-987.33
1	FID	ACIS-I-5	7.23	2425	-0.165	0.075	0.007	0.013	0.000000	0.000000	-1809.48	909.92
2	FID	ACIS-I-6	7.27	2425	0.016	0.022	0.007	0.012	0.000000	0.000000	403.48	1554.99
3	GUIDE	11671112	7.78	4851	-0.107	0.163	0.058	0.093	74.058917	3.175804	1001.35	-1701.65
4	GUIDE	11669928	8.93	4850	-0.125	-0.004	0.064	0.104	73.336883	3.436182	1647.95	980.20
5	GUIDE	11667264	9.09	4848	0.124	-0.058	0.068	0.114	73.428722	2.553150	-1475.25	303.98
6	GUIDE	11668544	9.25	4848	0.147	-0.014	0.072	0.116	73.461099	2.439378	-1870.19	143.20
7	GUIDE	11669880	9.60	4847	-0.044	-0.084	0.079	0.128	73.557952	3.464975	1837.60	202.23

2.4 Star Slots

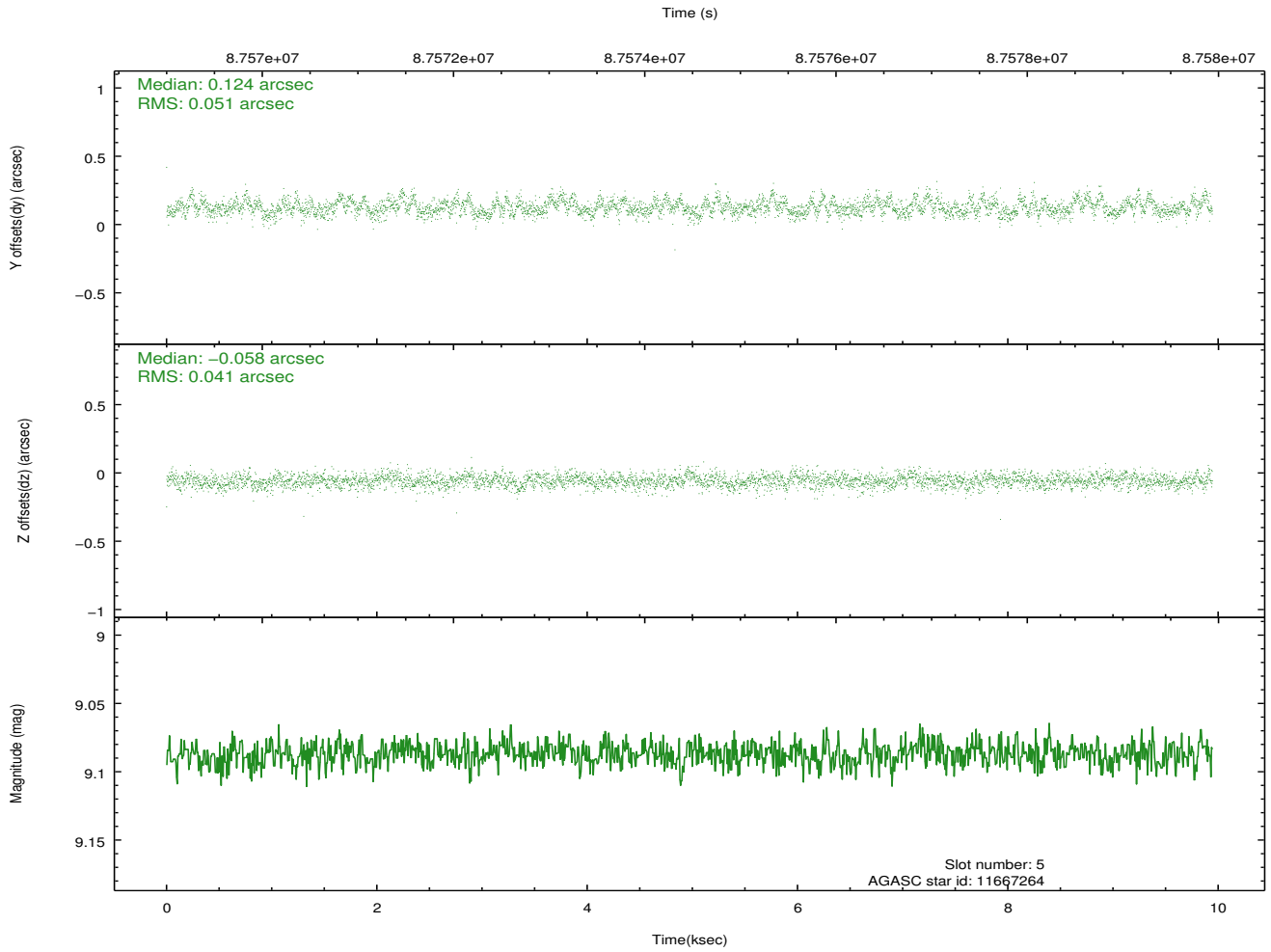
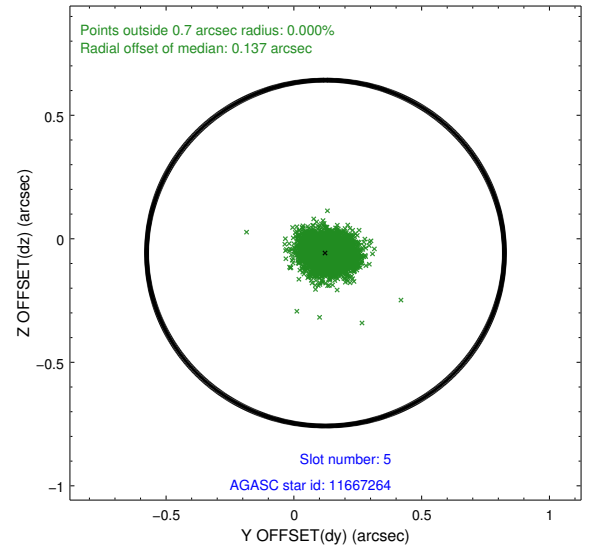
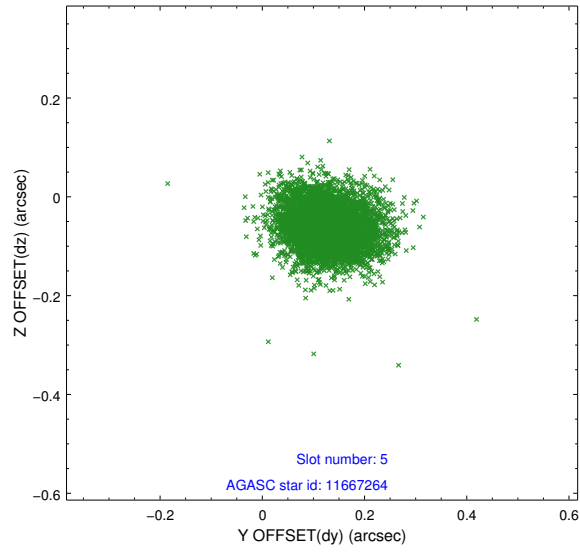
2.4.1 Slot 3



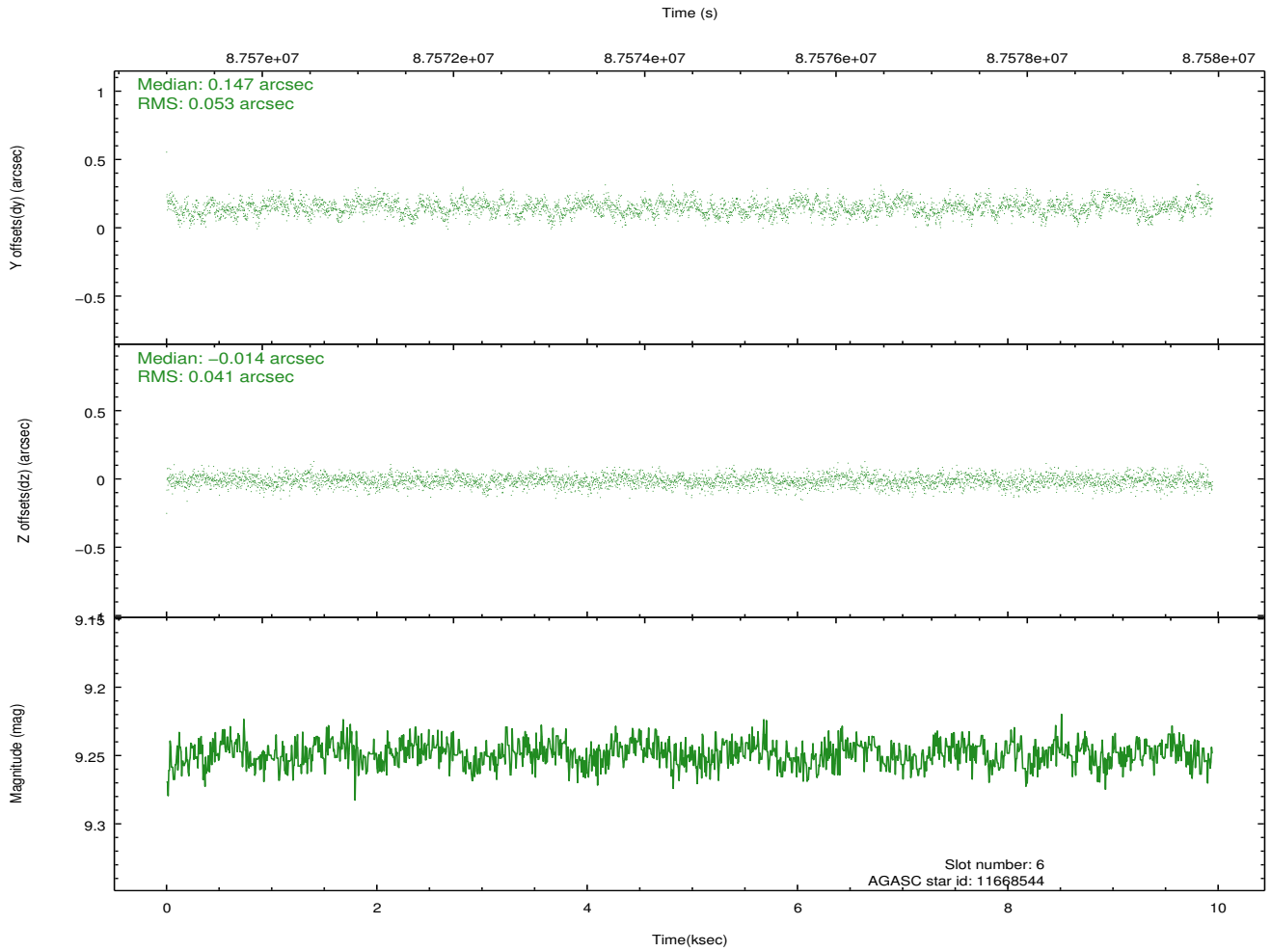
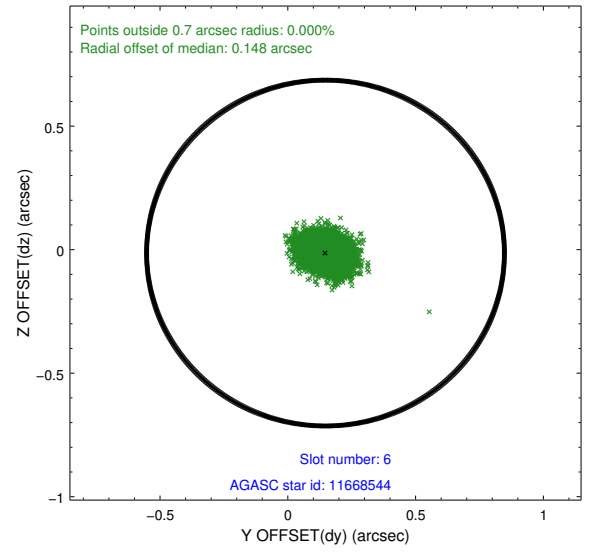
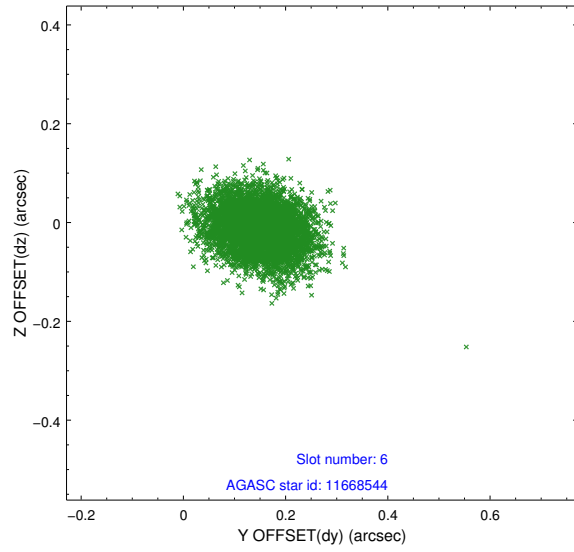
2.4.2 Slot 4



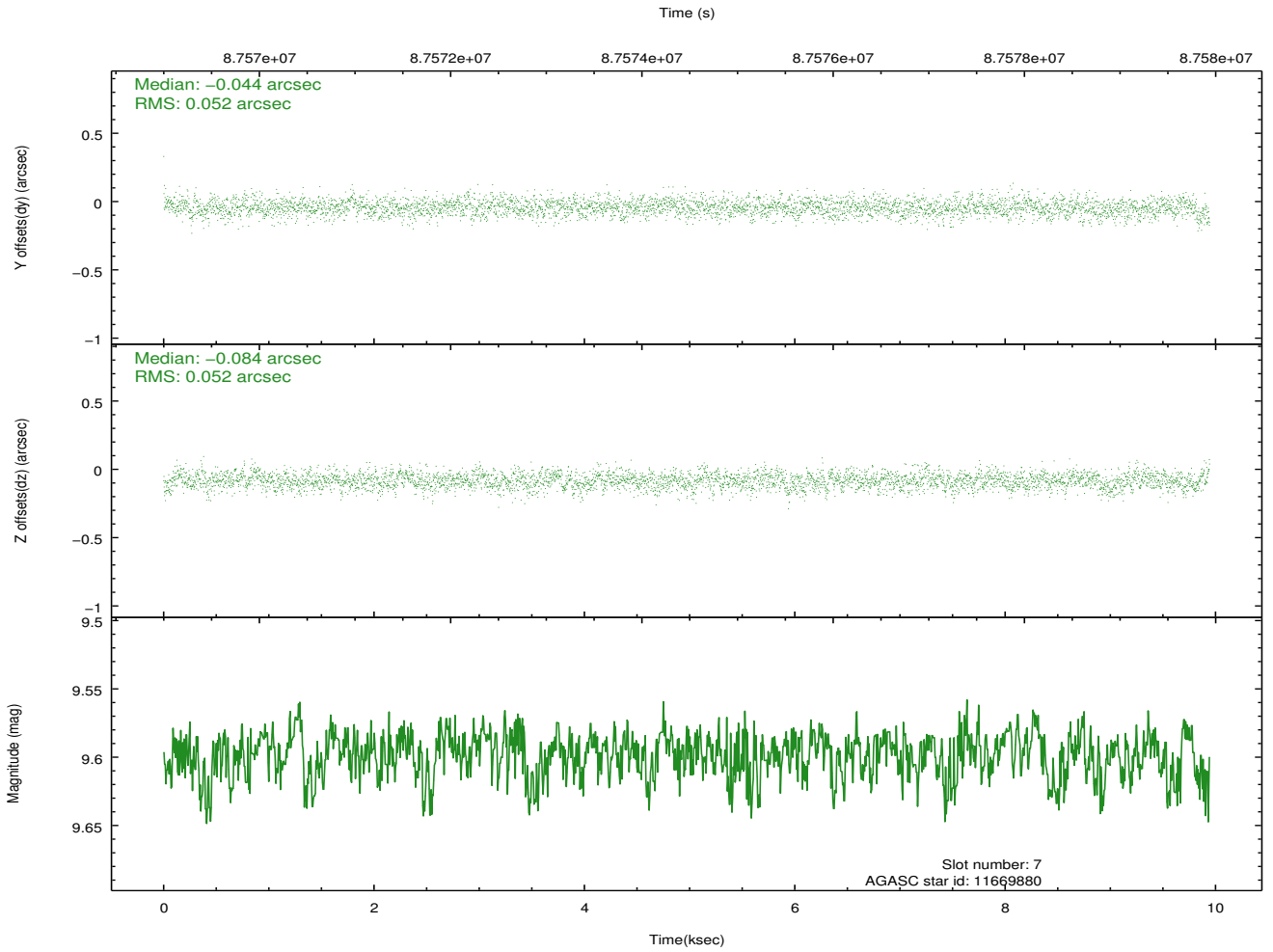
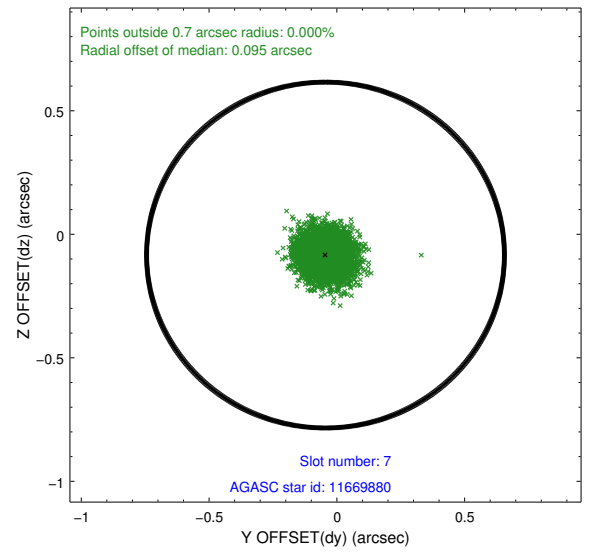
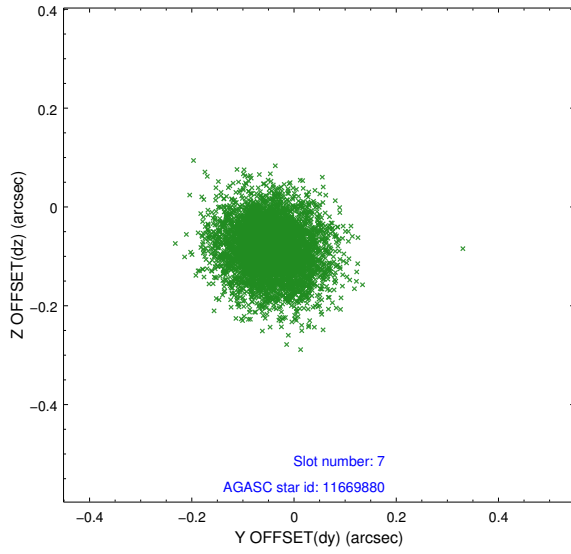
2.4.3 Slot 5



2.4.4 Slot 6

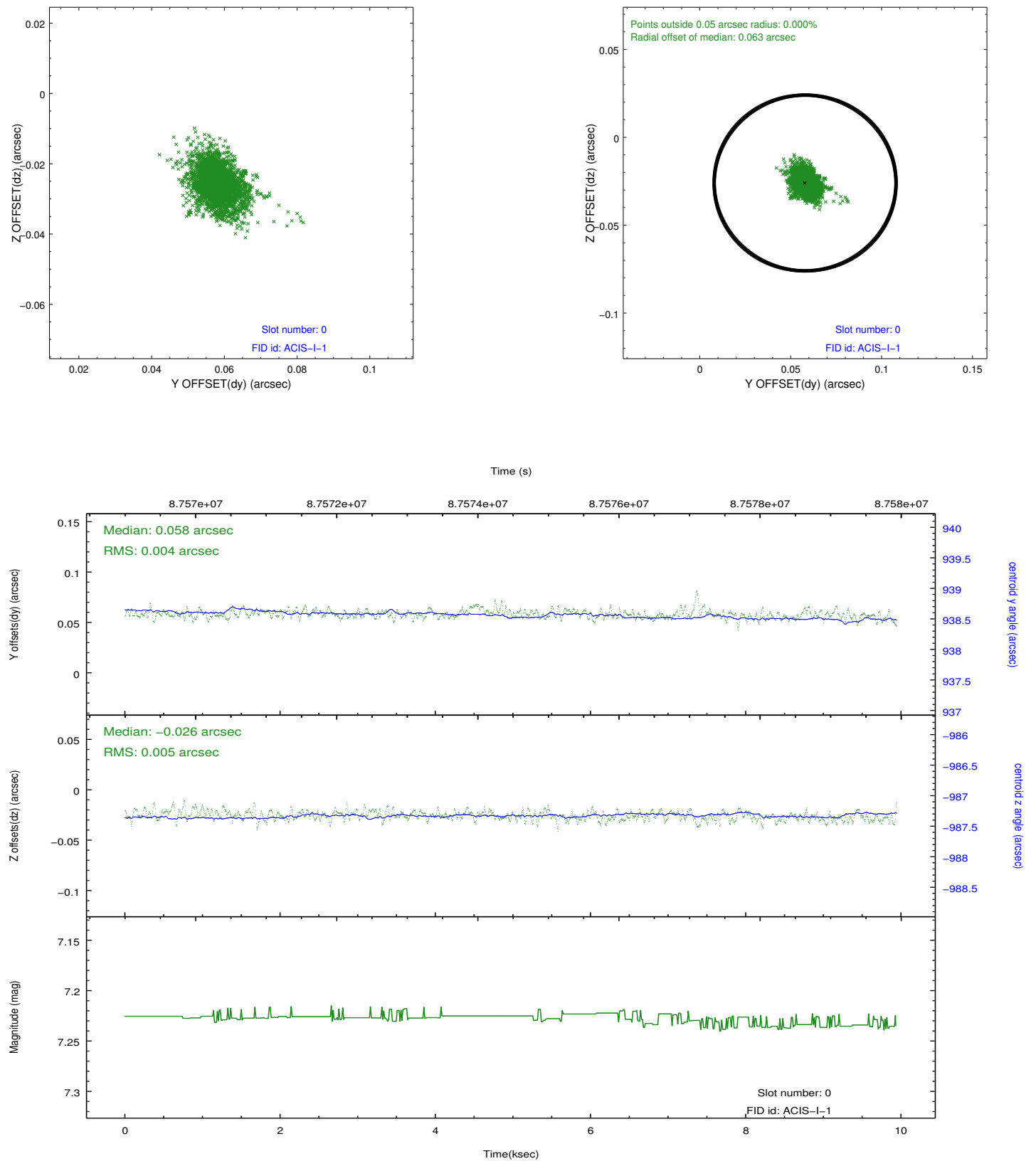


2.4.5 Slot 7

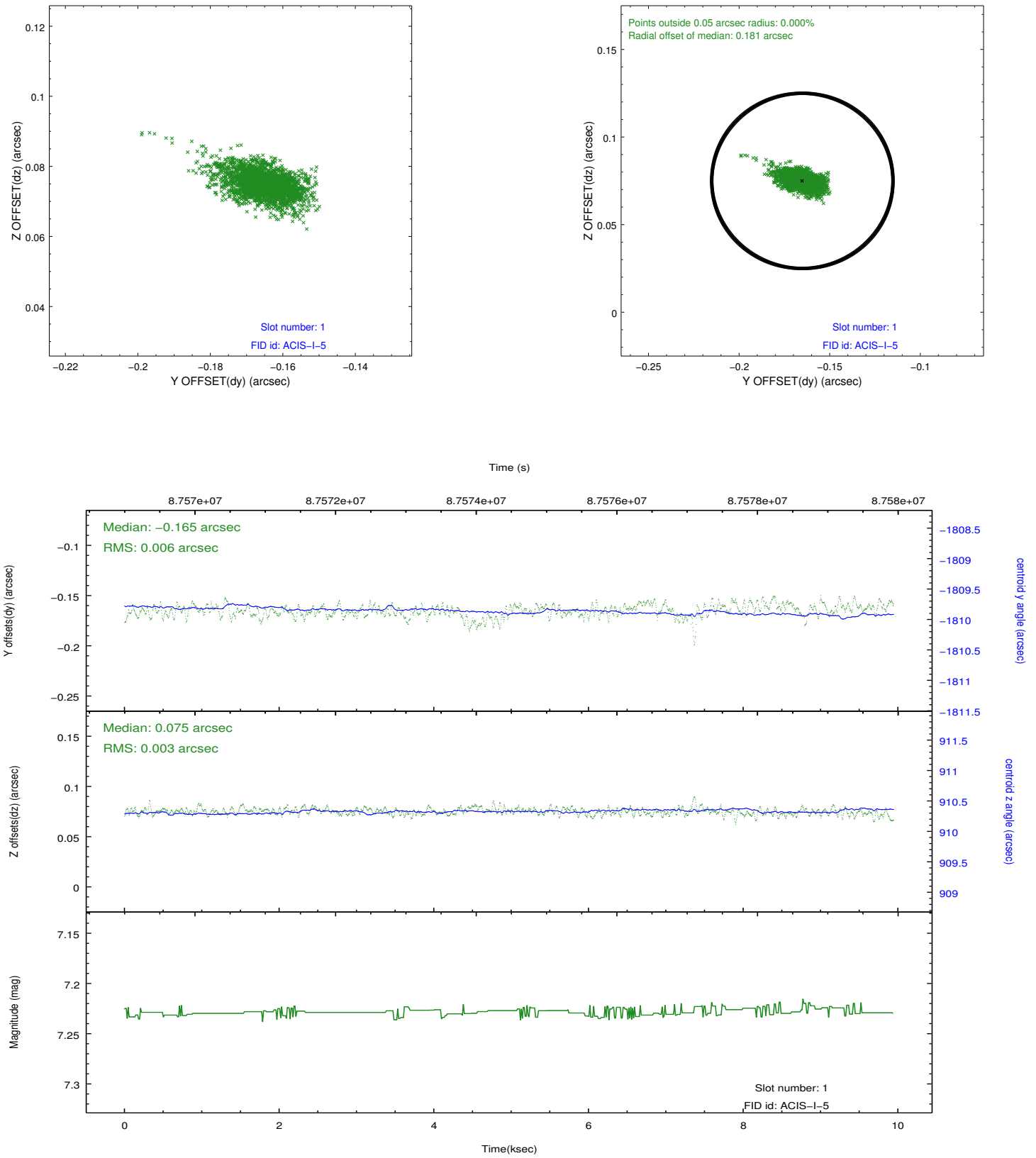


2.5 FID Slots

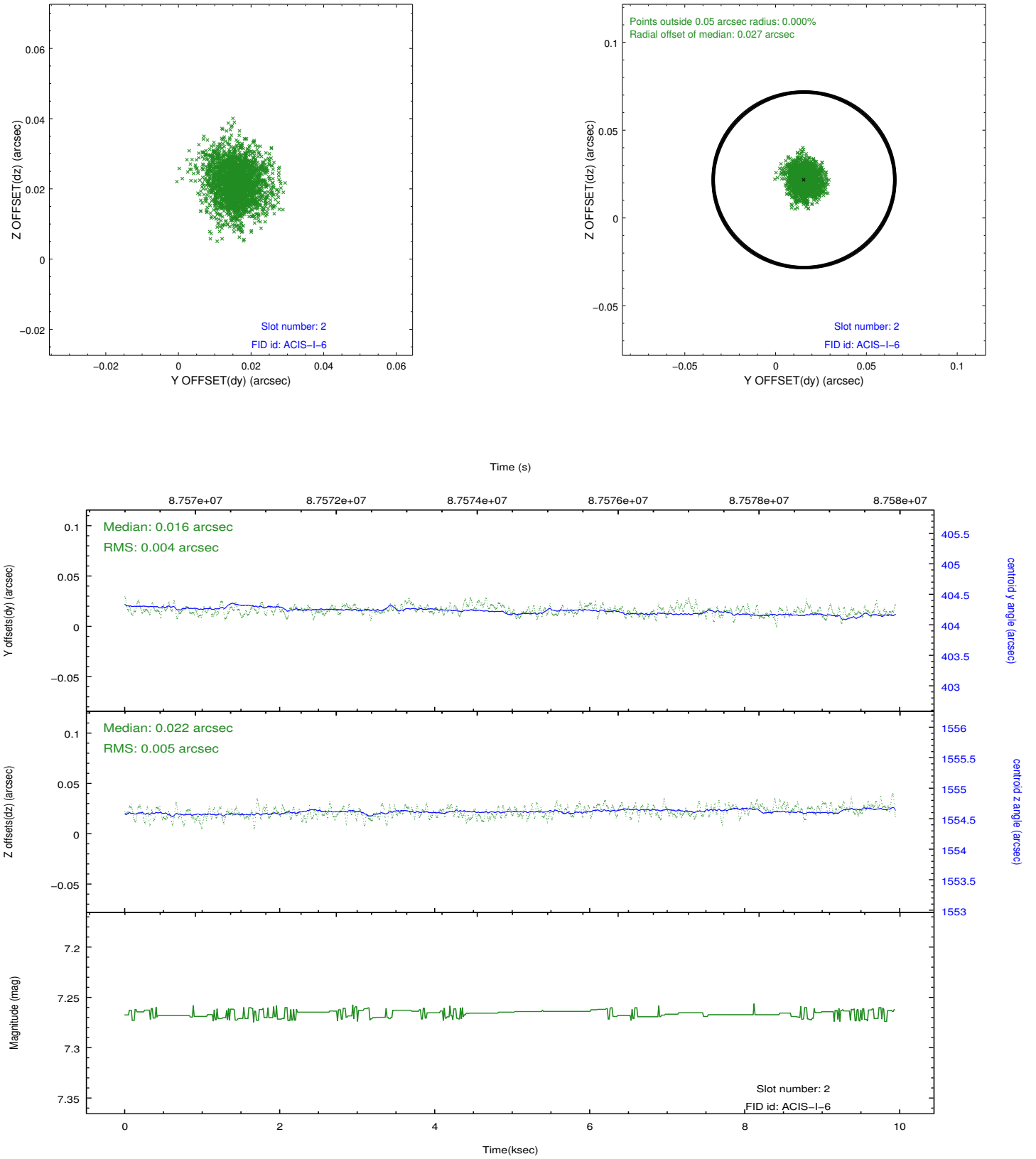
2.5.1 Slot 0



2.5.2 Slot 1



2.5.3 Slot 2



A Summary

A.1 Status

V&V Scientist	Beth Sundheim
V&V Date (YYYY-MM-DD)	2012.09.10
V&V Edition	1
V&V Disposition and Status	OK
V&V Charge Time	9.59

A.2 Comments