

V&V Reference Report

L2 ASCDS Version : 7.6.10

Observation 527 - L2 Version 001
Chandra X-Ray Center

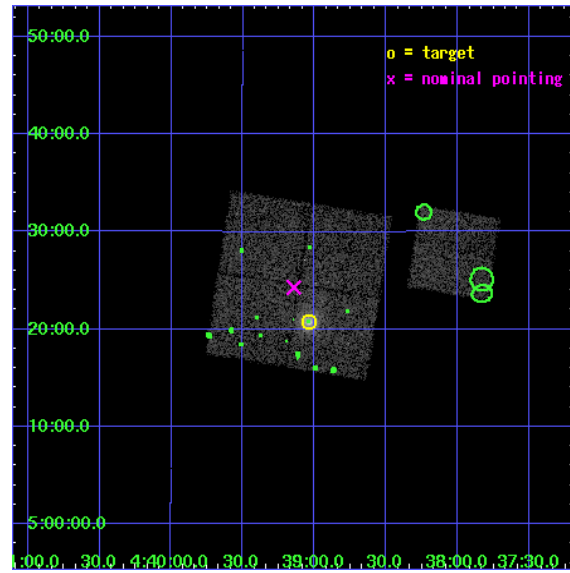
L2 Processing Date : Jun 6 2007

Contents

1	Front	2
2	OBI	3
2.1	OBI	3
2.1.1	Images	3
2.1.2	Bias	3
2.1.3	Parameters	4
2.1.4	Events	4
2.2	Compared Parameters	5
2.3	Aspect	6
2.4	Star Slots	9
2.4.1	Slot 3	9
2.4.2	Slot 4	10
2.4.3	Slot 5	11
2.4.4	Slot 6	12
2.4.5	Slot 7	13
2.5	FID Slots	14
2.5.1	Slot 0	14
2.5.2	Slot 1	15
2.5.3	Slot 2	16
3	Point Sources	17
A	Summary	18
A.1	Status	18
A.2	Comments	18

1 Front

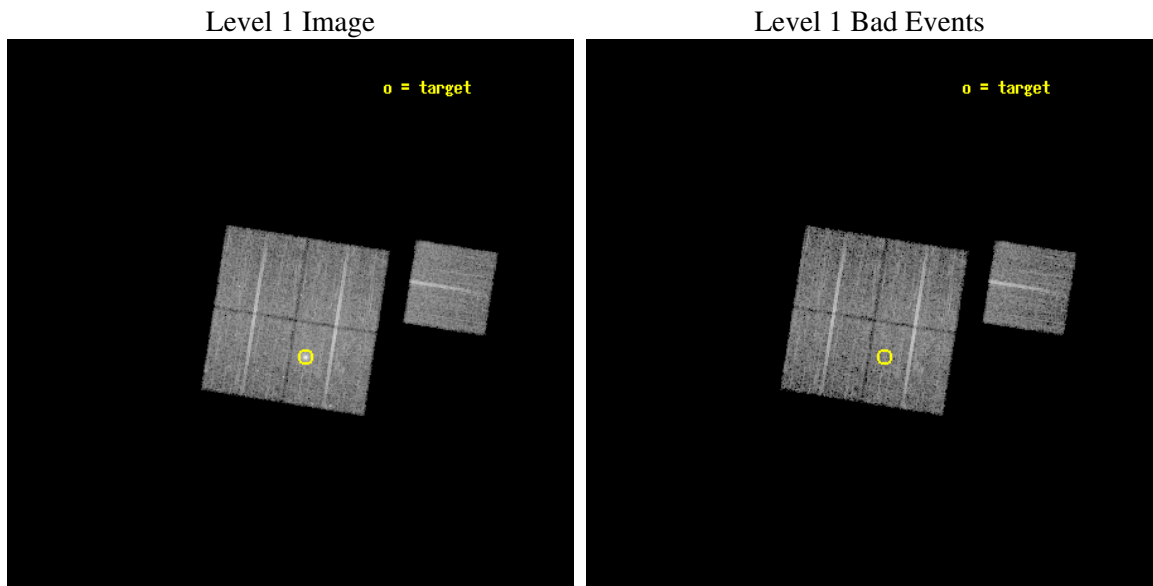
seq_num	800035
obs_id	527
title	DETERMINATION OF H0/Q0
observer	DR. LEON VANSPEYBROECK
object	RX J0439+0520
dtcycle	0
cycle	P
ra_targ	69.759525
dec_targ	5.345486
ra_nom	69.78605308232
dec_nom	5.4048333646152
roll_nom	99.051387107322
revision	2
ontime	9715.1591685116
livetime	9592.1399733534
ontime0	9718.400009051
ontime1	9718.400009051
ontime2	9718.400009051
ontime3	9715.1591685116
ontime6	9718.400009051
l2events	34394



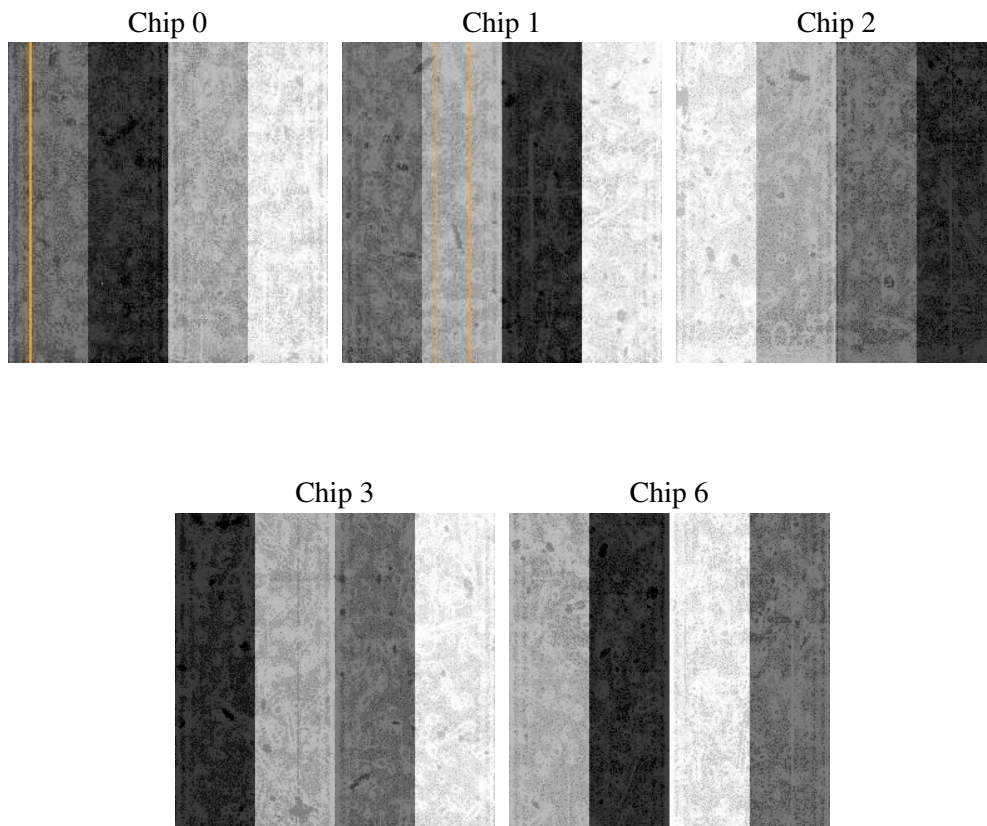
2 OBI

2.1 OBI

2.1.1 Images



2.1.2 Bias



2.1.3 Parameters

obi_num	0
ascdsver	7.6.10
caldsver	3.4.0
date	2007-06-06T12:41:54
revision	2

sched_exp_time	9600.000000
ontime	9715.1591685116
ontime0	9718.400009051
ontime1	9718.400009051
ontime2	9718.400009051
ontime3	9715.1591685116
ontime6	9718.400009051
l1events	307159

2.1.4 Events

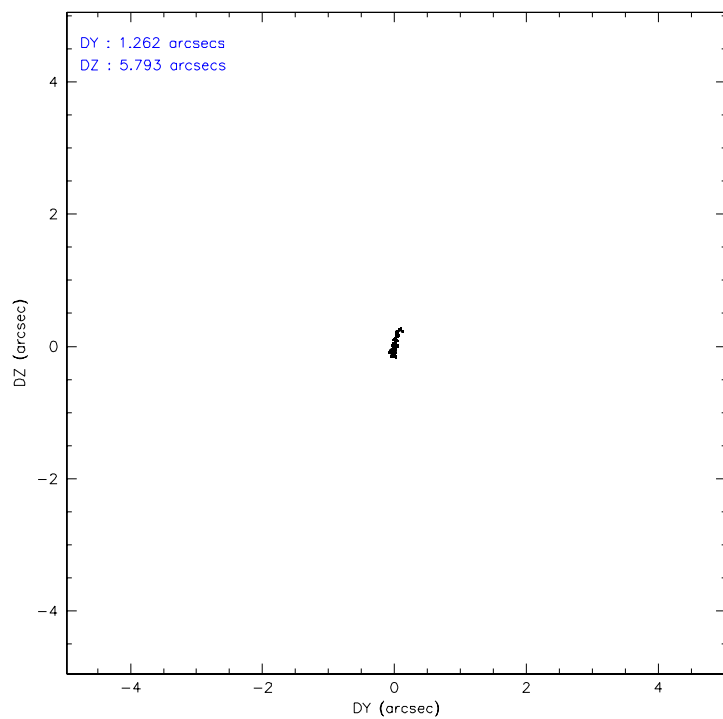
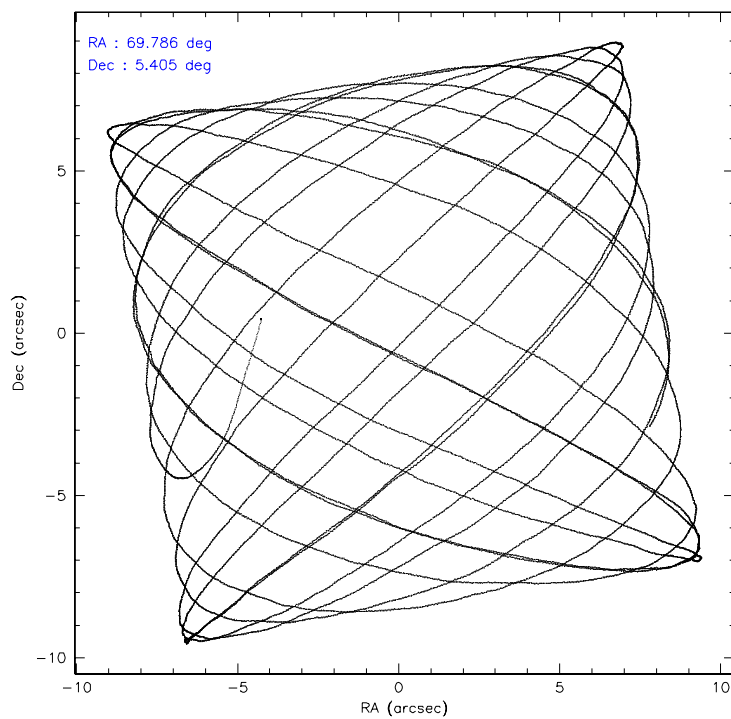
	ccd 0	ccd 1	ccd 2	ccd 3	ccd 6
level 1 events	57998	58642	63247	68340	58932
rejected events	51160	51208	56555	56578	52525
rejected %	88%	87%	89%	82%	89%

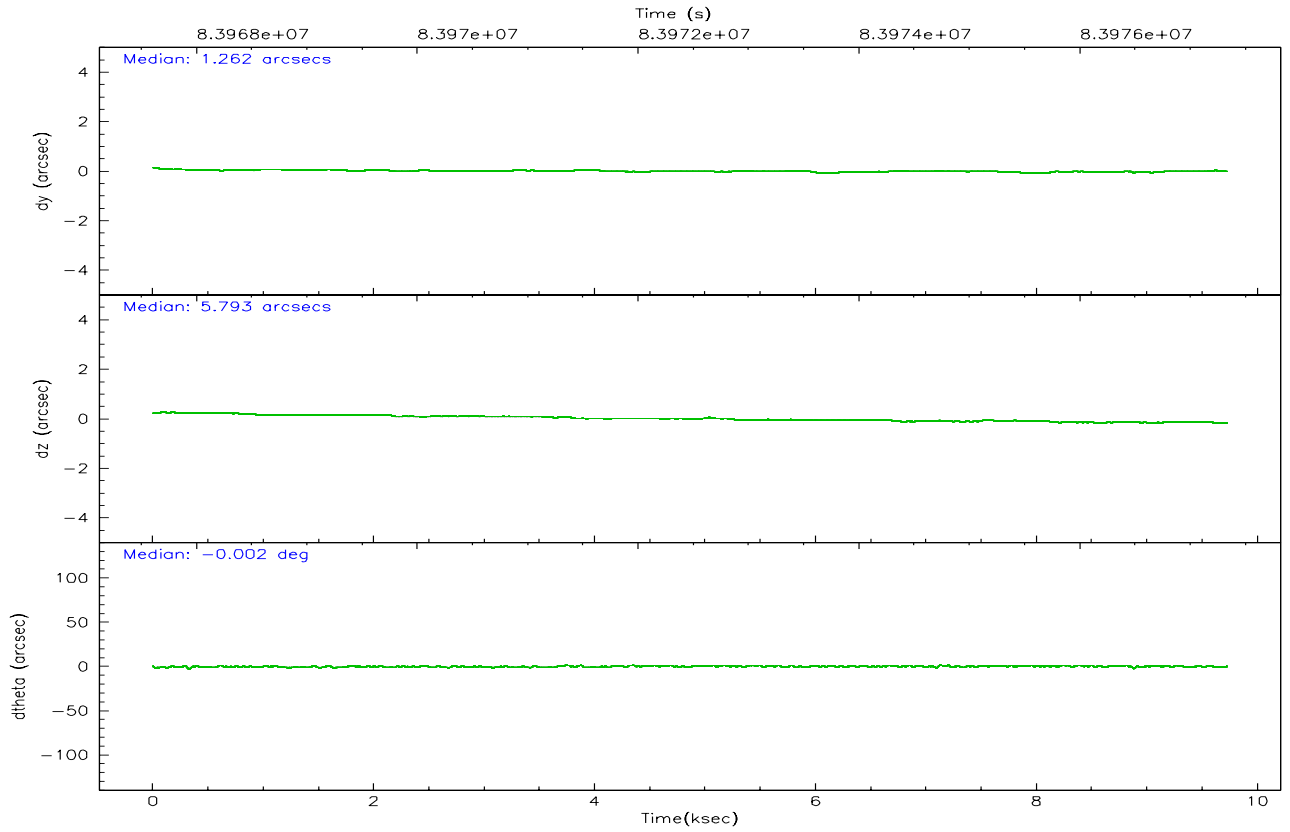
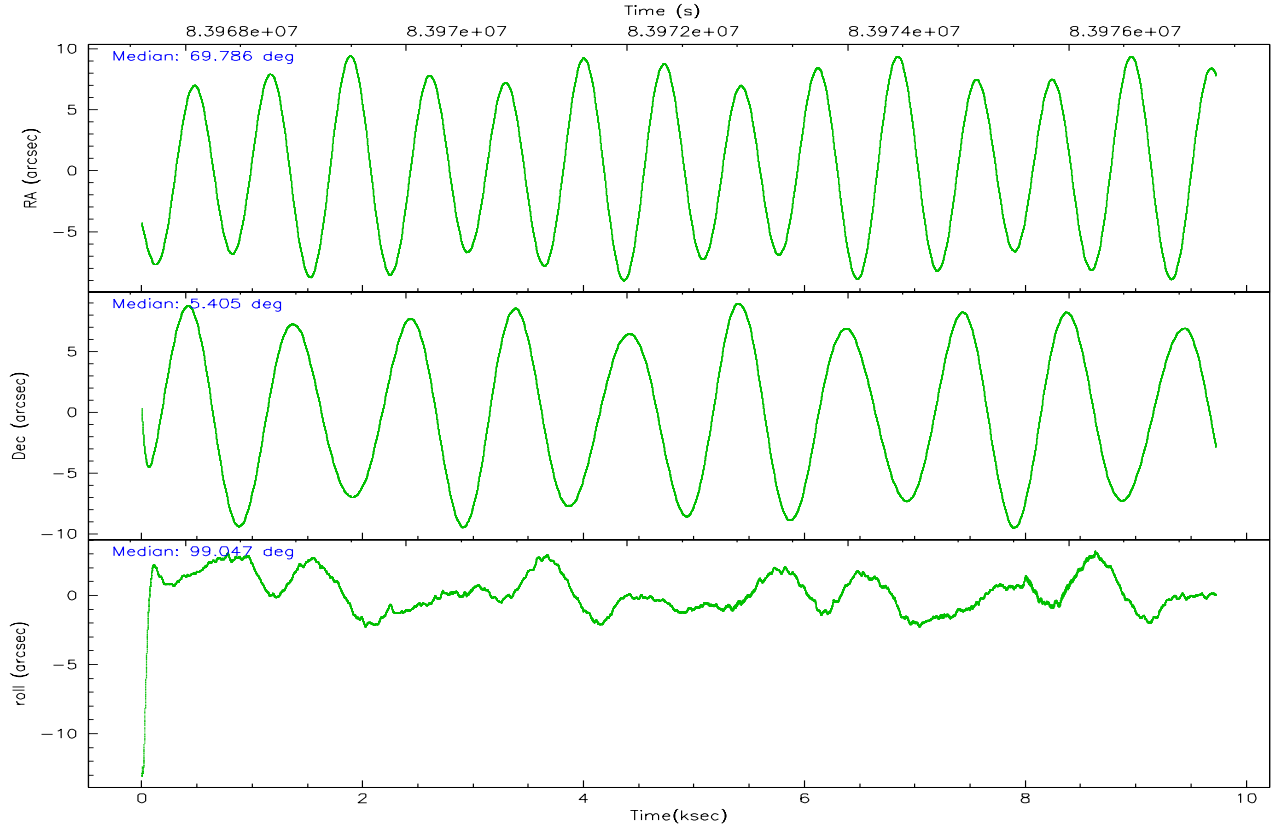
	ccd 0	ccd 1	ccd 2	ccd 3	ccd 6
grade 0 events	3049	3301	3099	7317	2718
	5%	5%	4%	10%	4%
grade 1 events	30	21	34	44	17
	0%	0%	0%	0%	0%
grade 2 events	1431	1517	1413	1888	1328
	2%	2%	2%	2%	2%
grade 3 events	730	766	619	742	671
	1%	1%	0%	1%	1%
grade 4 events	627	747	640	800	651
	1%	1%	1%	1%	1%
grade 5 events	1997	2365	2007	2295	2342
	3%	4%	3%	3%	3%
grade 6 events	1164	1282	1089	1301	1216
	2%	2%	1%	1%	2%
grade 7 events	48970	48643	54346	53953	49989
	84%	82%	85%	78%	84%

2.2 Compared Parameters

Parameter	Planned	Actual	Parameter	Planned	Actual
Instrument	ACIS	ACIS	Obspar format version number	6	6
Detector	ACIS-01236	ACIS-01236	Obspar file type	PREDICTED	ACTUAL
Grating	NONE	NONE	Obspar update status	NONE	UPDATED
Data mode	VFAINT	VFAINT	Number of optional ACIS chips dropped	0	0
Observation mode	POINTING	POINTING	On-chip summing requested	N	N
Pointing RA	69.803427	69.78605308232041	Subarray requested	NONE	NONE
Pointing Dec	5.383322	5.404833364615166	Alternating exposures requested	N	N
Pointing Roll	98.841083	99.0513871073221	Primary exposure time	3.200000	3.2
SIM focus pos (mm)	-0.782348	-0.7809083437167272			
SIM defocus (mm)	0	0.001439871863259334			
SIM translation stage pos (mm)	-236.532463	-236.5241547330508			
SIM translation stage offset (mm)	2.94	2.931701730121091			
Observation start time	83967737.184000	83966620.65707301			
Observation start date	2000-08-29T20:21:13	2000-08-29T20:03:40			
Observation end time	83977337.184000	83977892.582496			
Observation end date	2000-08-29T23:01:13	2000-08-29T23:11:32			
Read mode	TIMED	TIMED			

2.3 Aspect



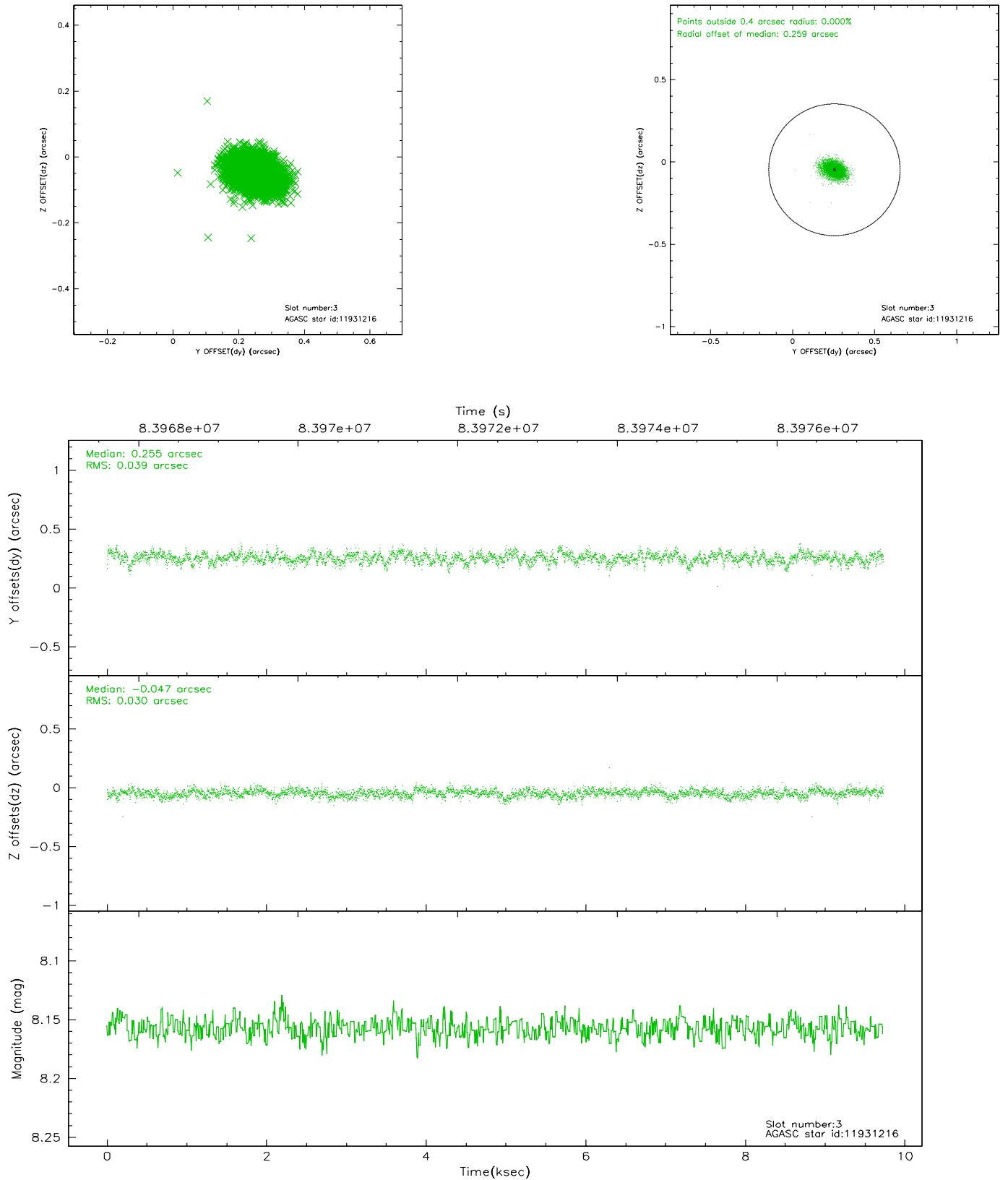


Slot Statistics

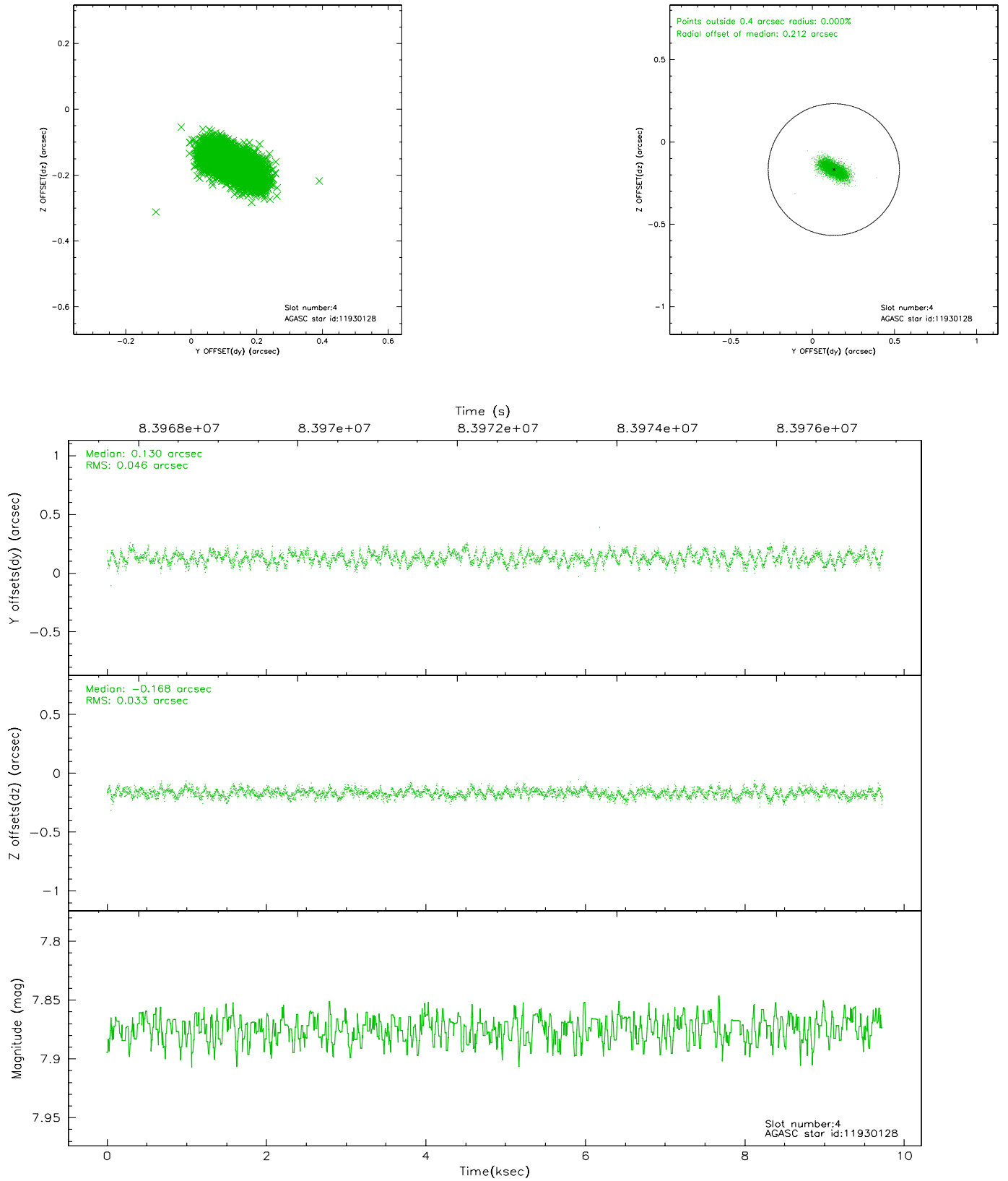
slot	status	id	mag	n_pts	med_dy	med_dz	dr1	dr2	ra	dec	mean_y	mean_z
0	FID	ACIS-I-2	7.14	2373	0.000	-0.002	0.009	0.016	0.000000	0.000000	-755.39	-775.60
1	FID	ACIS-I-4	7.21	2373	-0.089	0.012	0.006	0.011	0.000000	0.000000	2158.35	1130.35
2	FID	ACIS-I-5	7.23	2372	-0.013	0.060	0.009	0.015	0.000000	0.000000	-1808.67	1129.26
3	GUIDE	11931216	8.16	4745	0.255	-0.047	0.051	0.088	69.809895	4.744134	-2277.15	331.06
4	GUIDE	11930128	7.87	4745	0.130	-0.168	0.060	0.100	69.405504	4.982791	-1205.58	1632.11
5	GUIDE	12460960	9.20	4746	-0.199	-0.111	0.072	0.117	69.597447	5.837659	1729.12	478.47
6	GUIDE	12461880	8.86	4746	-0.141	-0.060	0.066	0.107	69.474578	5.770319	1558.07	950.44
7	GUIDE	11929648	9.53	4741	-0.046	0.391	0.091	0.151	70.369441	5.564886	335.50	-2103.39

2.4 Star Slots

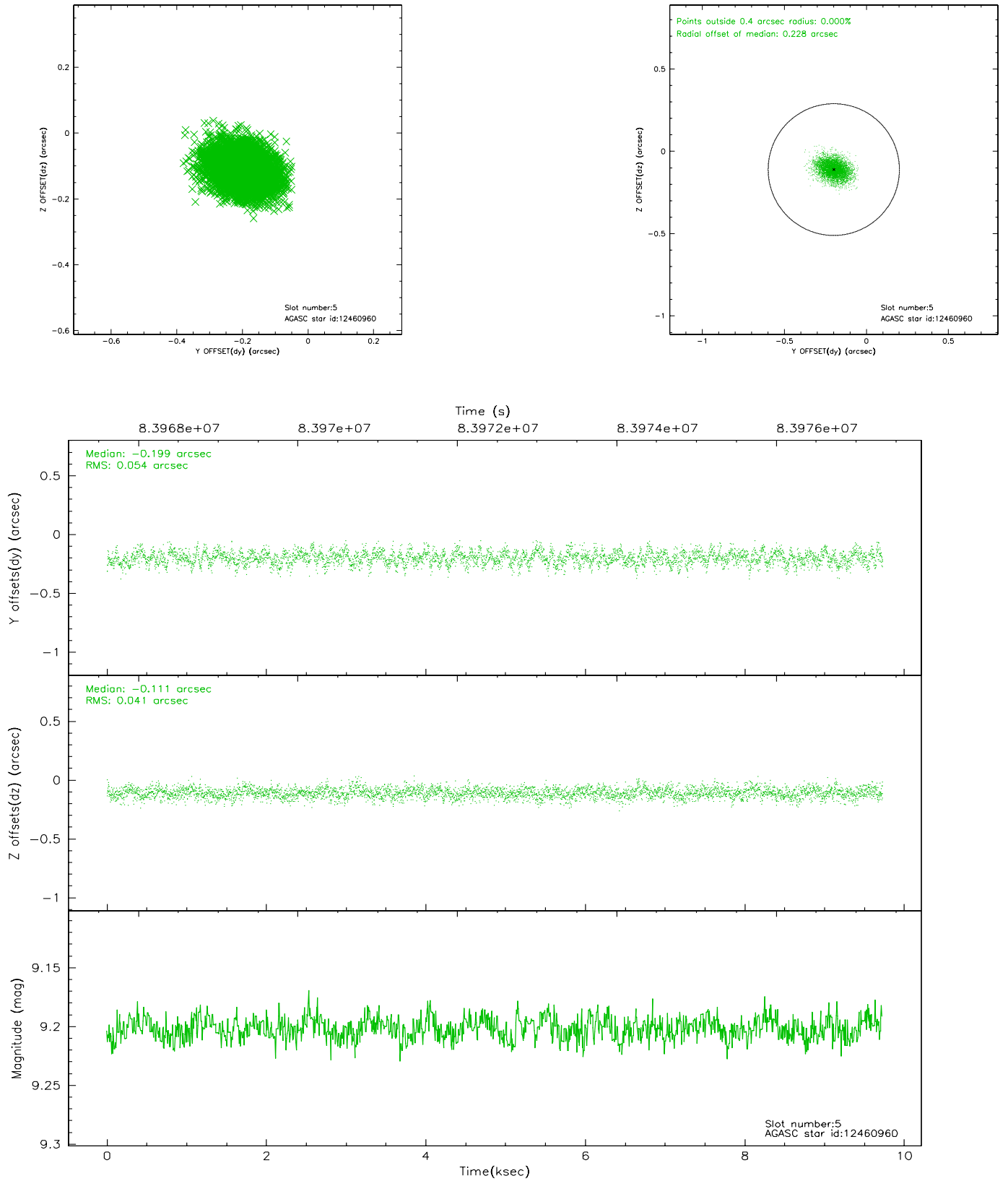
2.4.1 Slot 3



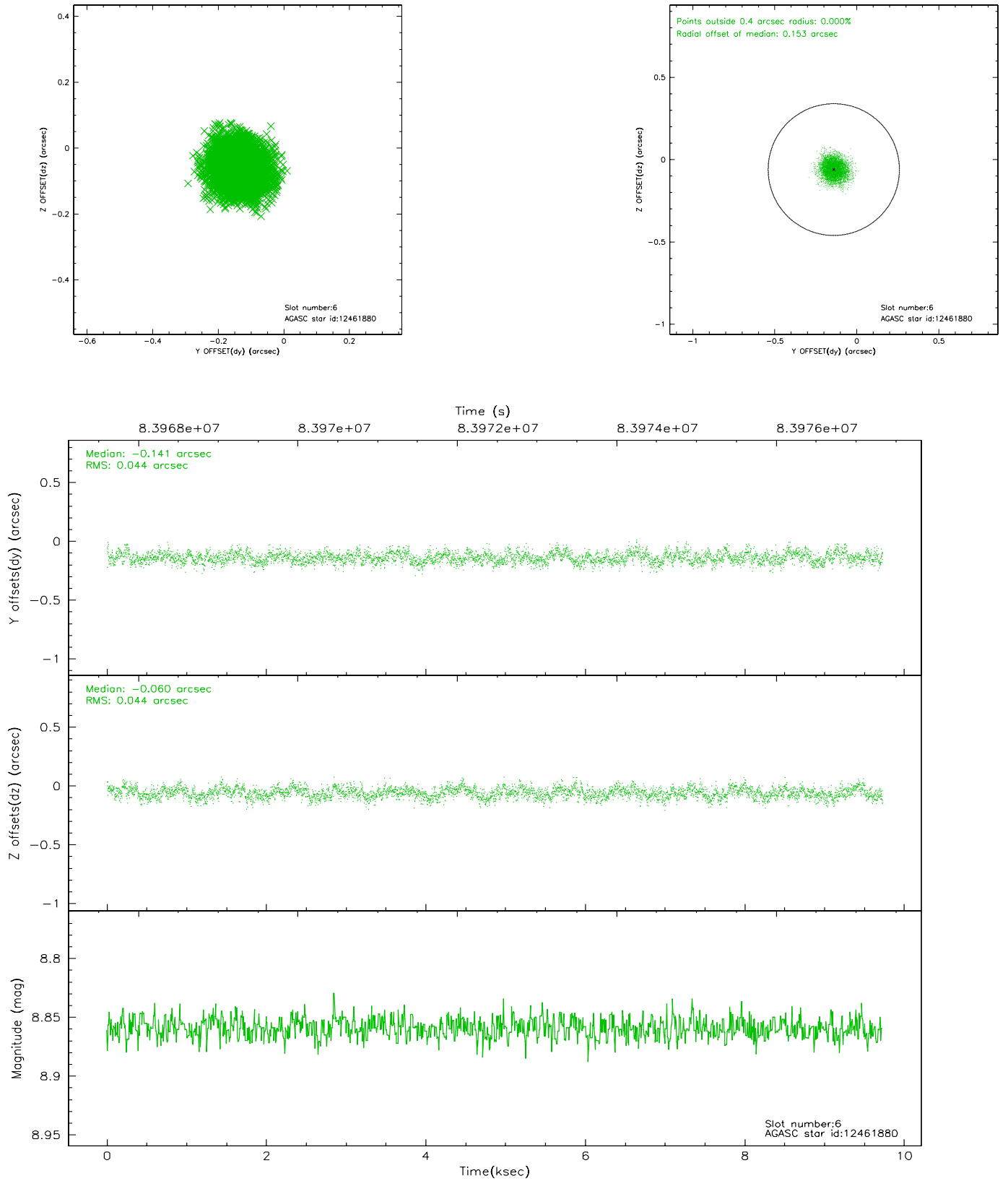
2.4.2 Slot 4



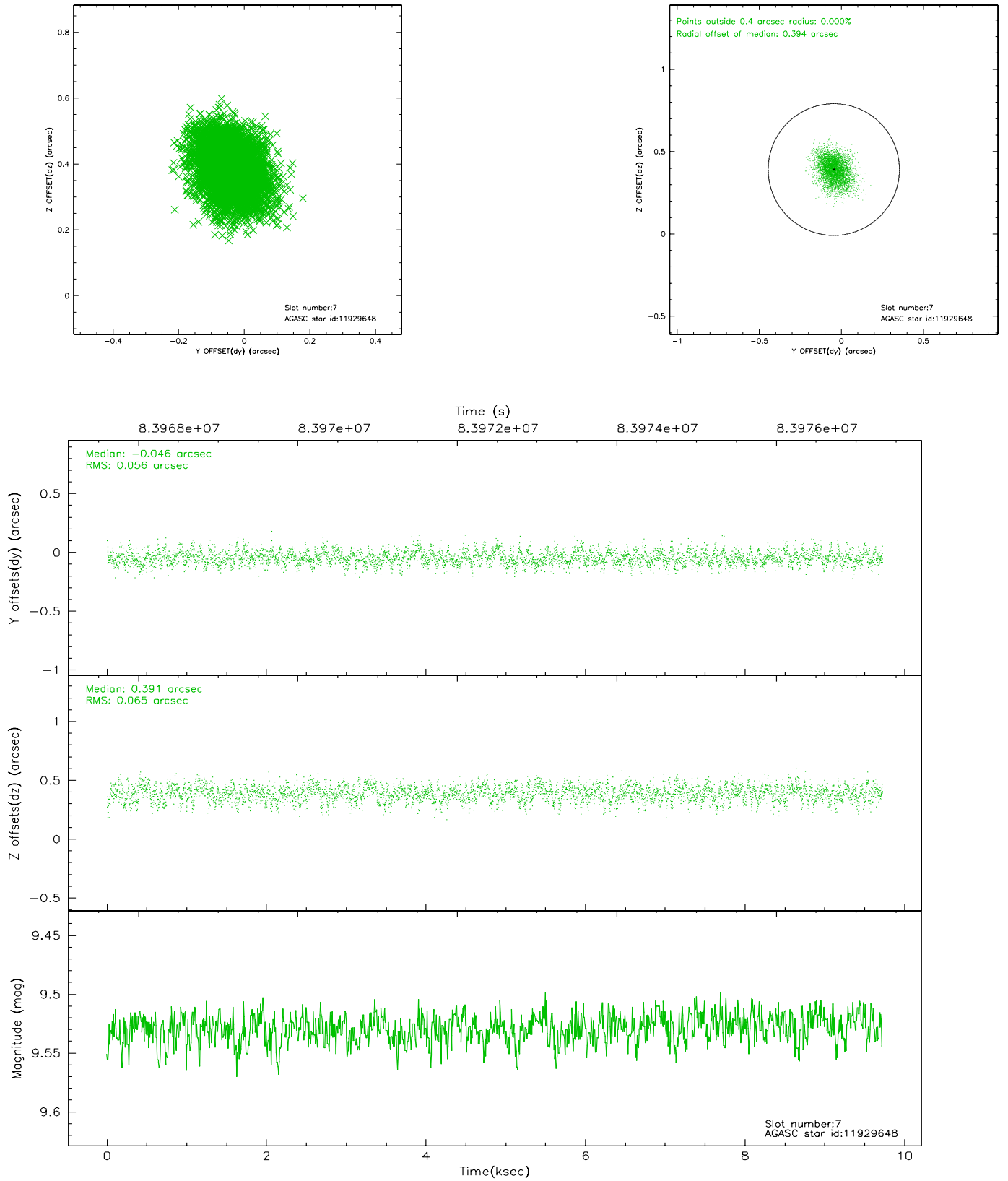
2.4.3 Slot 5



2.4.4 Slot 6

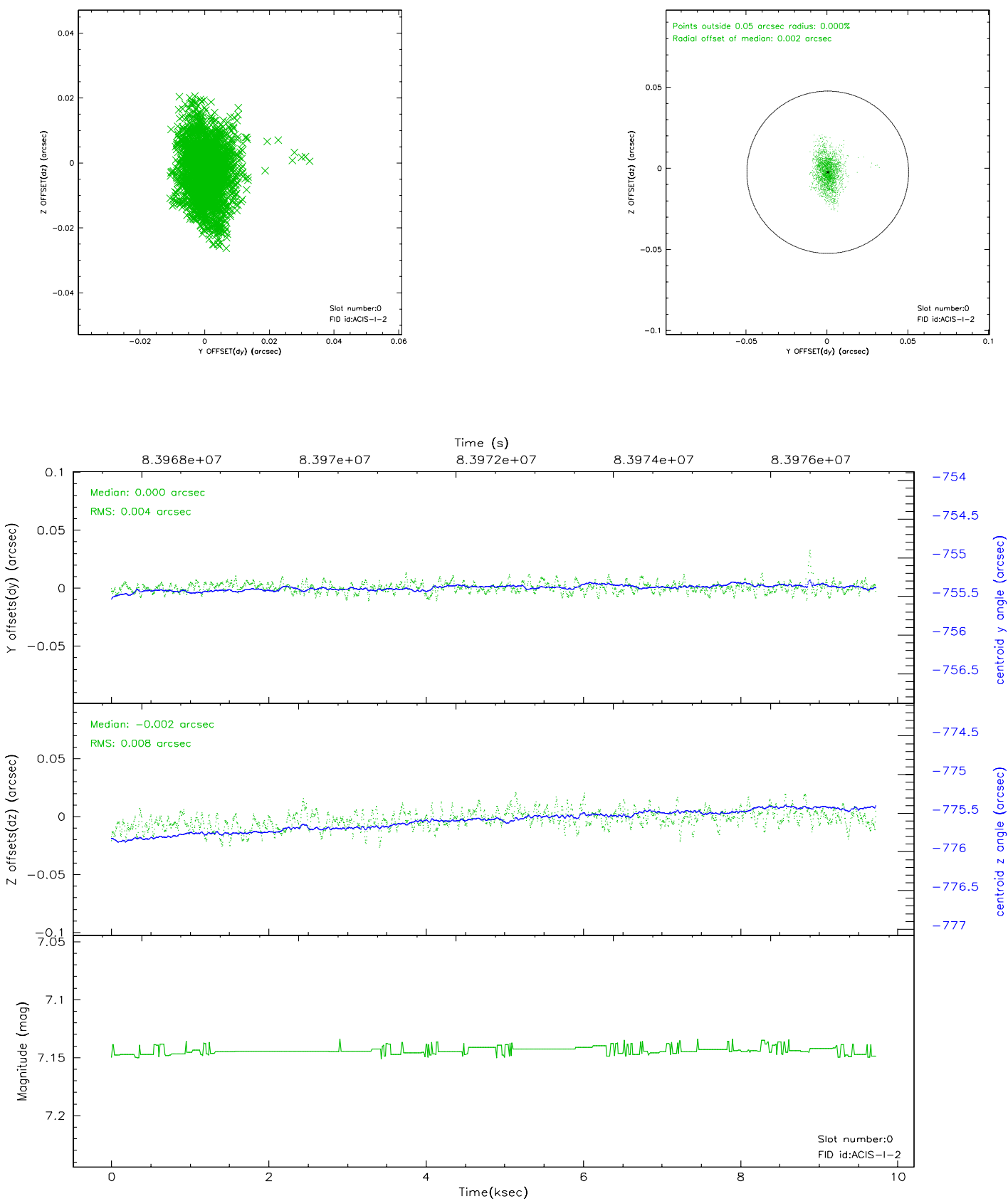


2.4.5 Slot 7

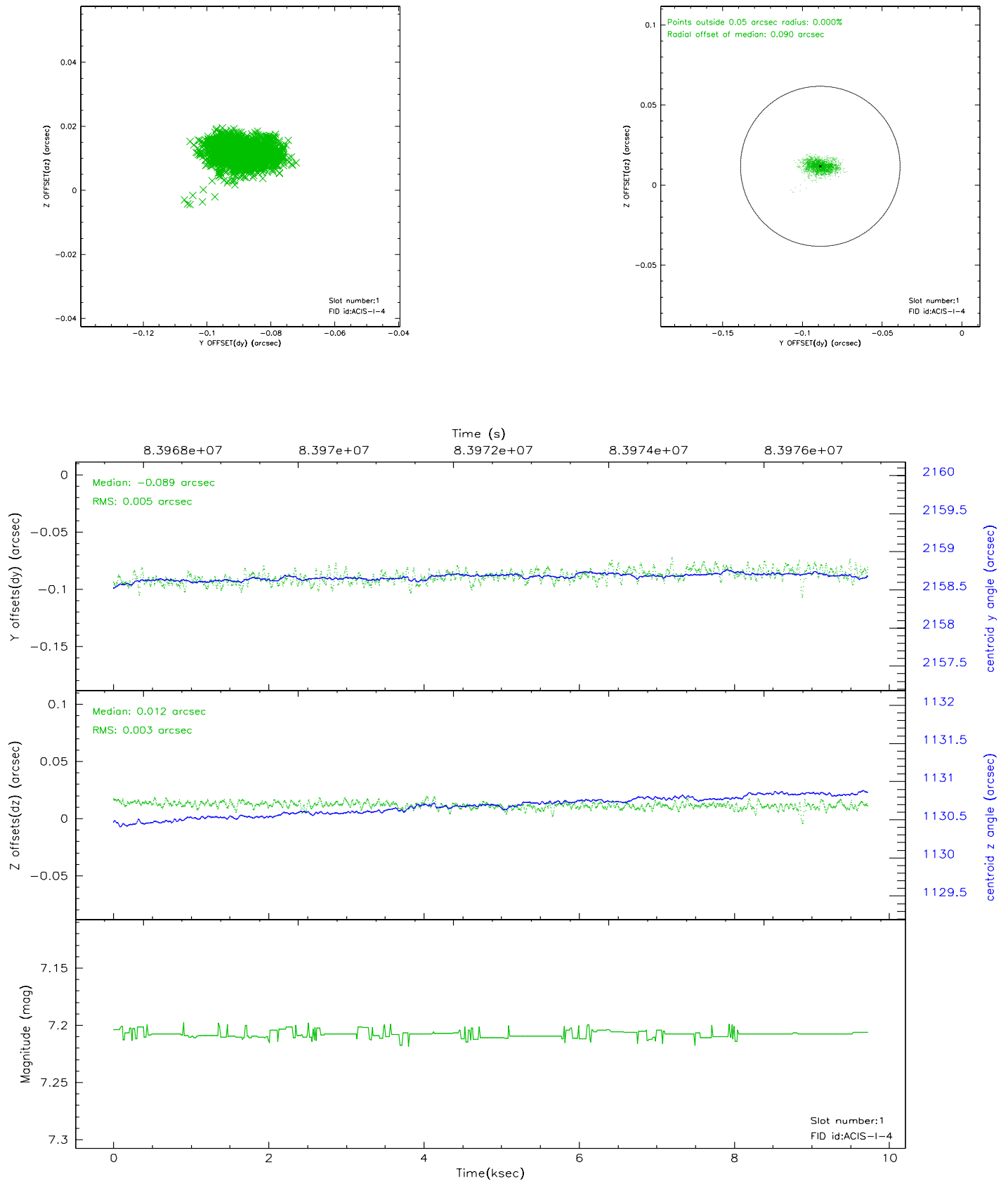


2.5 FID Slots

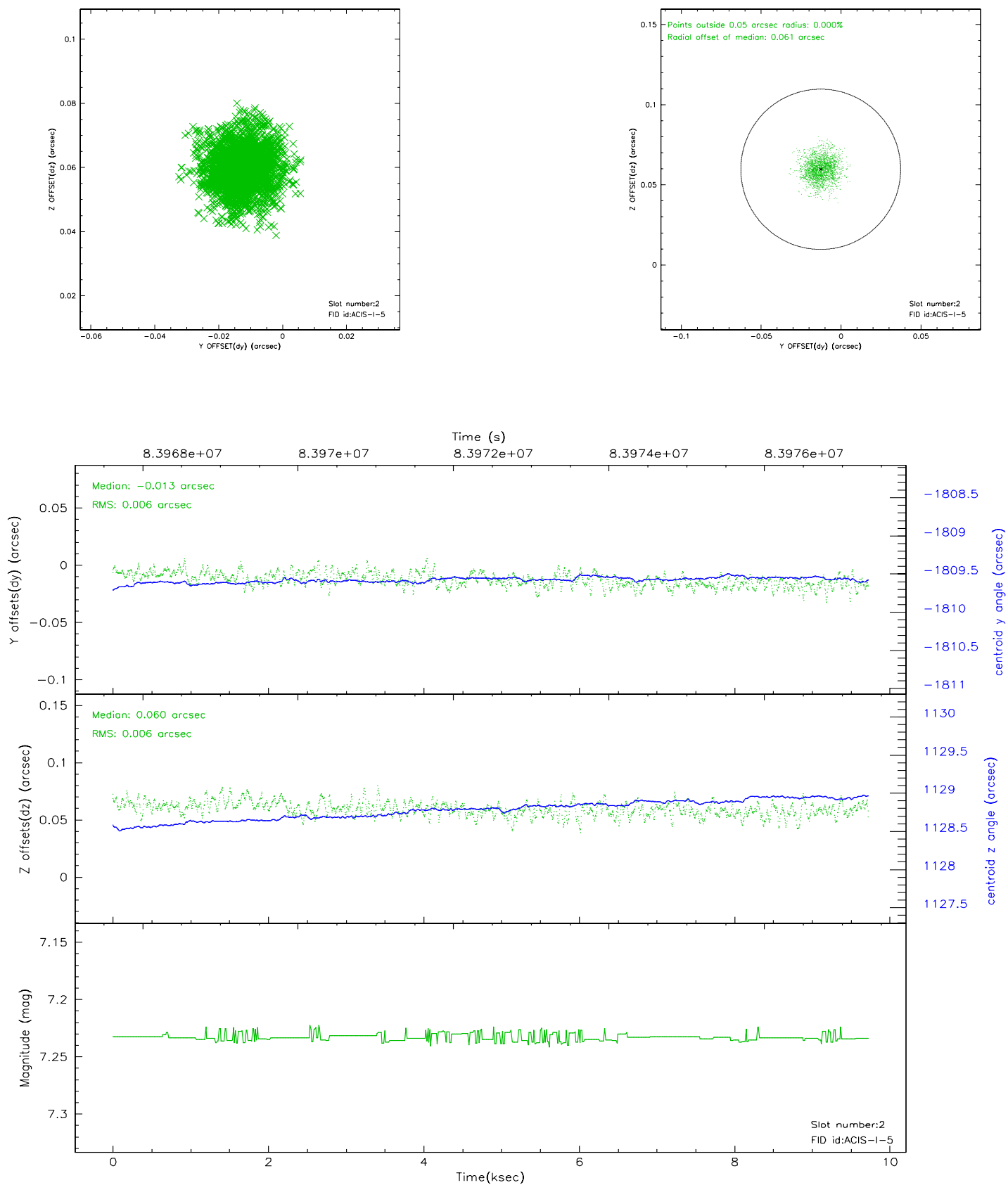
2.5.1 Slot 0



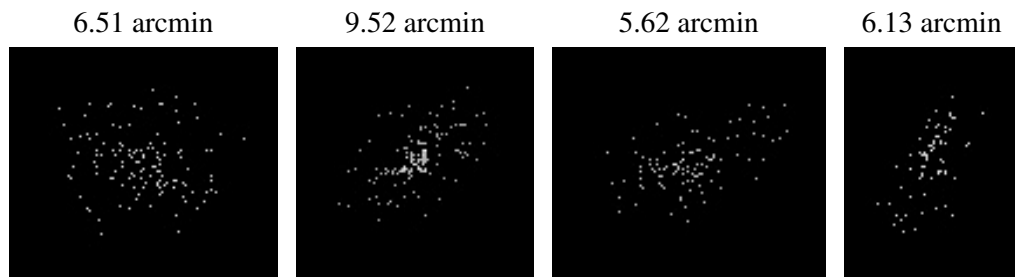
2.5.2 Slot 1



2.5.3 Slot 2



3 Point Sources



A Summary

A.1 Status

V&V Scientist	Jen Lauer
V&V Date (YYYY-MM-DD)	2007.06.06
V&V Edition	1
V&V Disposition and Status	OK
V&V Charge Time	9.715

A.2 Comments