

V&V Reference Report

L2 ASCDS Version : 7.6.10

Observation 516 - L2 Version 001
Chandra X-Ray Center

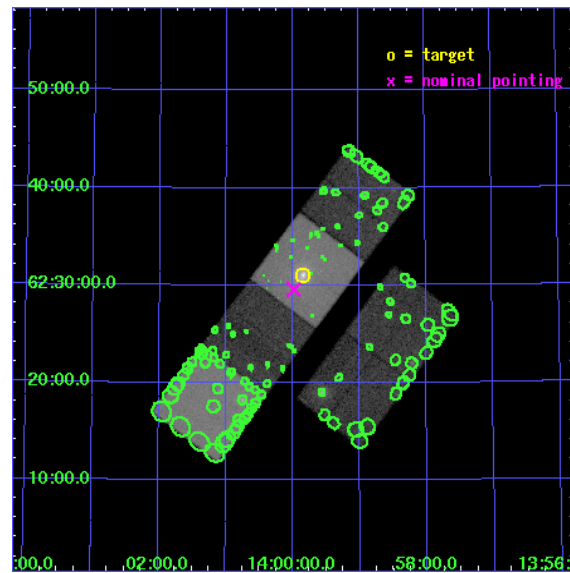
L2 Processing Date : Jun 6 2007

Contents

1	Front	2
2	OBI	3
2.1	OBI	3
2.1.1	Images	3
2.1.2	Bias	3
2.1.3	Parameters	4
2.1.4	Events	4
2.2	Compared Parameters	5
2.3	Aspect	6
2.4	Star Slots	9
2.4.1	Slot 3	9
2.4.2	Slot 4	10
2.4.3	Slot 5	11
2.4.4	Slot 6	12
2.4.5	Slot 7	13
2.5	FID Slots	14
2.5.1	Slot 0	14
2.5.2	Slot 1	15
2.5.3	Slot 2	16
3	Point Sources	17
A	Summary	18
A.1	Status	18
A.2	Comments	18

1 Front

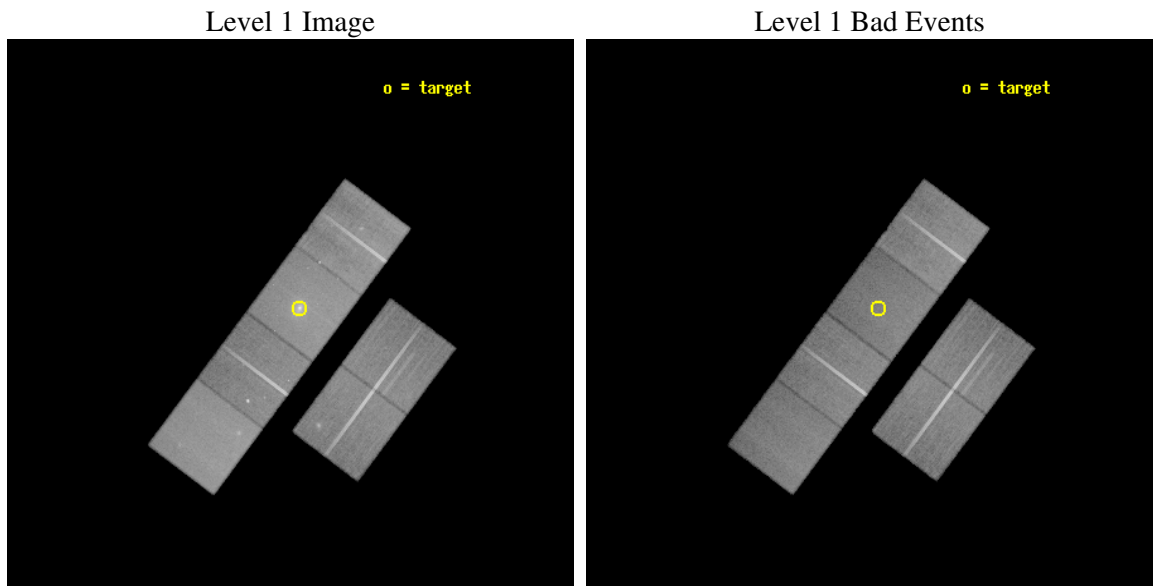
seq_num	800024
obs_id	516
title	ACIS STUDY OF DARK MATTER IN CLUSTERS
observer	Prof. Gordon Garmire
object	ZWCL 1358+6245
dtcycle	0
cycle	P
ra_targ	209.960833
dec_targ	62.517778
ra_nom	209.99558404922
dec_nom	62.493280074391
roll_nom	306.83493718388
revision	2
ontime	54755.200050995
livetime	54061.856738326
ontime2	54755.200050995
ontime3	54755.200050995
ontime5	54755.200050995
ontime6	54755.200050995
ontime7	54755.200050995
ontime8	54751.959230363
l2events	543633



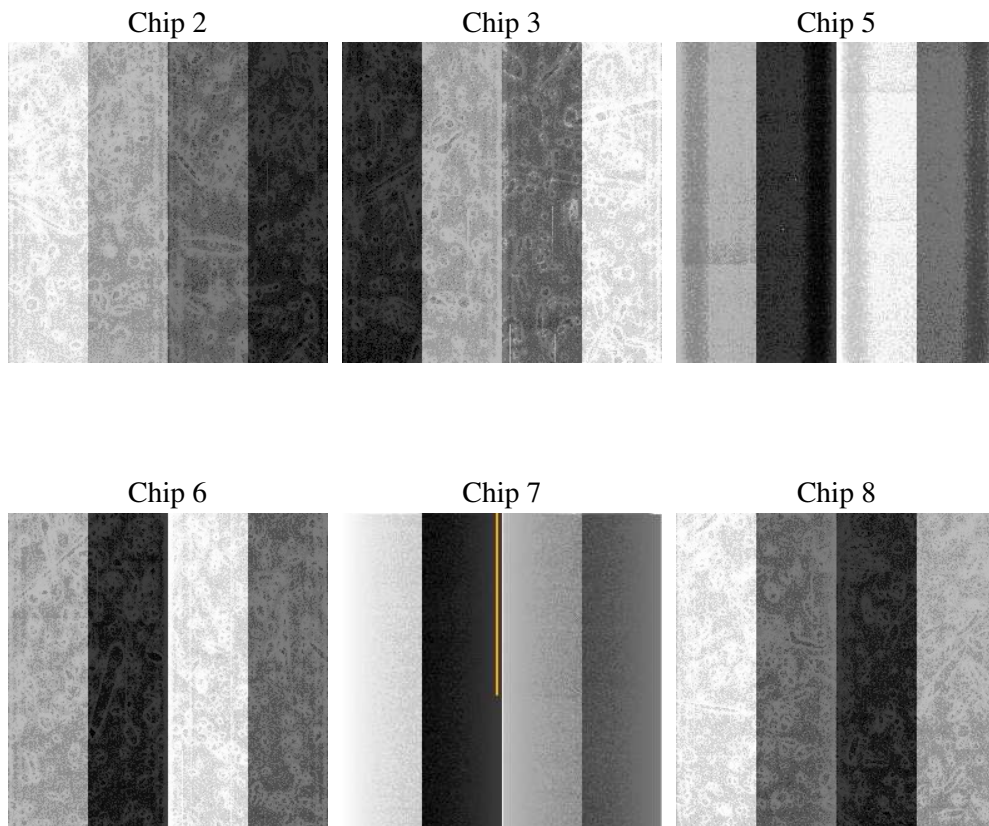
2 OBI

2.1 OBI

2.1.1 Images



2.1.2 Bias



2.1.3 Parameters

obi_num	0
ascdsver	7.6.10
caldbver	3.4.0
date	2007-06-06T21:12:55
revision	2

sched_exp_time	55000.000000
ontime	54755.200050995
ontime2	54755.200050995
ontime3	54755.200050995
ontime5	54755.200050995
ontime6	54755.200050995
ontime7	54755.200050995
ontime8	54751.959230363
l1events	2297446

2.1.4 Events

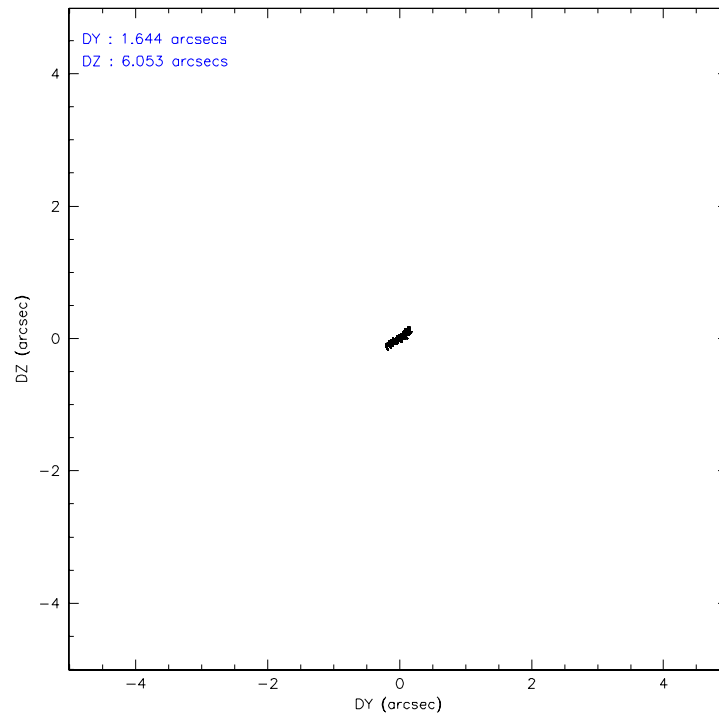
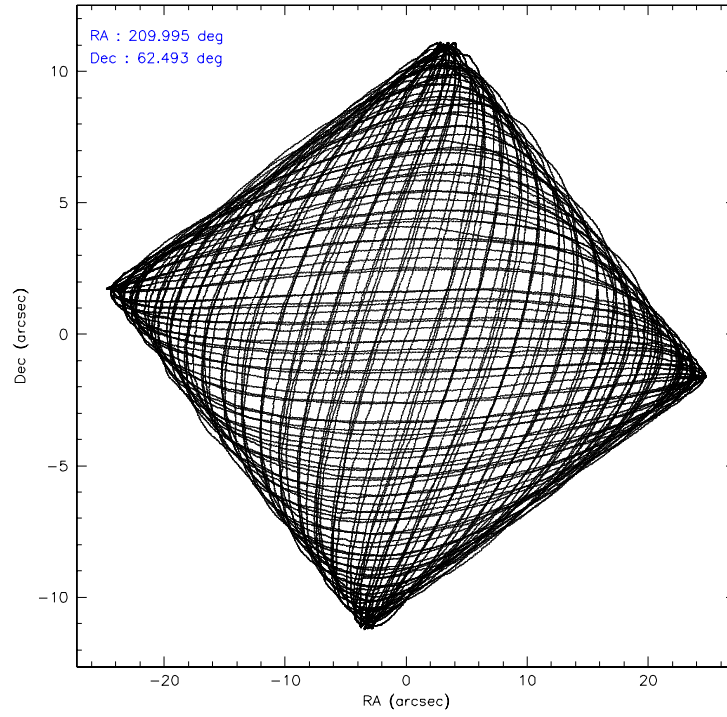
	ccd 2	ccd 3	ccd 5	ccd 6	ccd 7	ccd 8
level 1 events	338858	322535	441966	334685	441057	418345
rejected events	298849	286865	237632	294135	232979	337161
rejected %	88%	88%	53%	87%	52%	80%

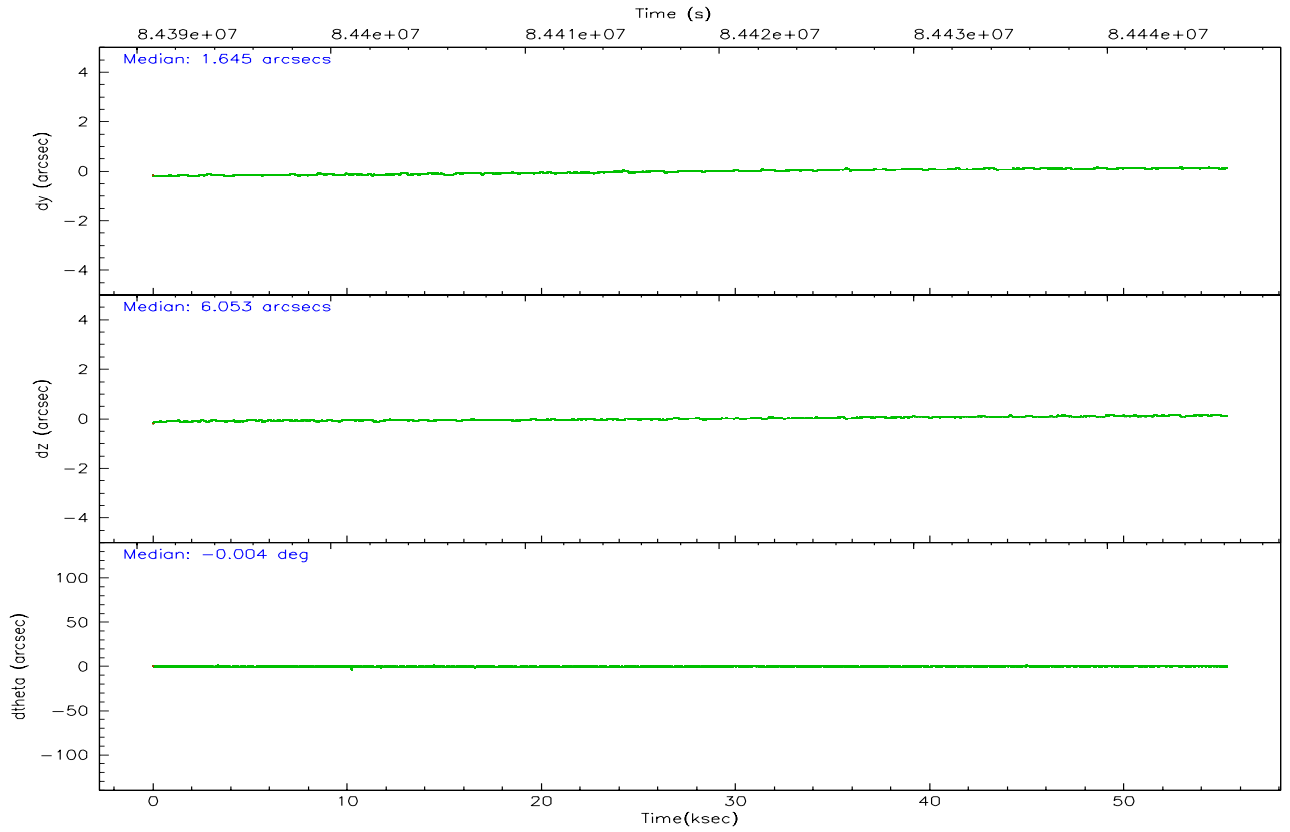
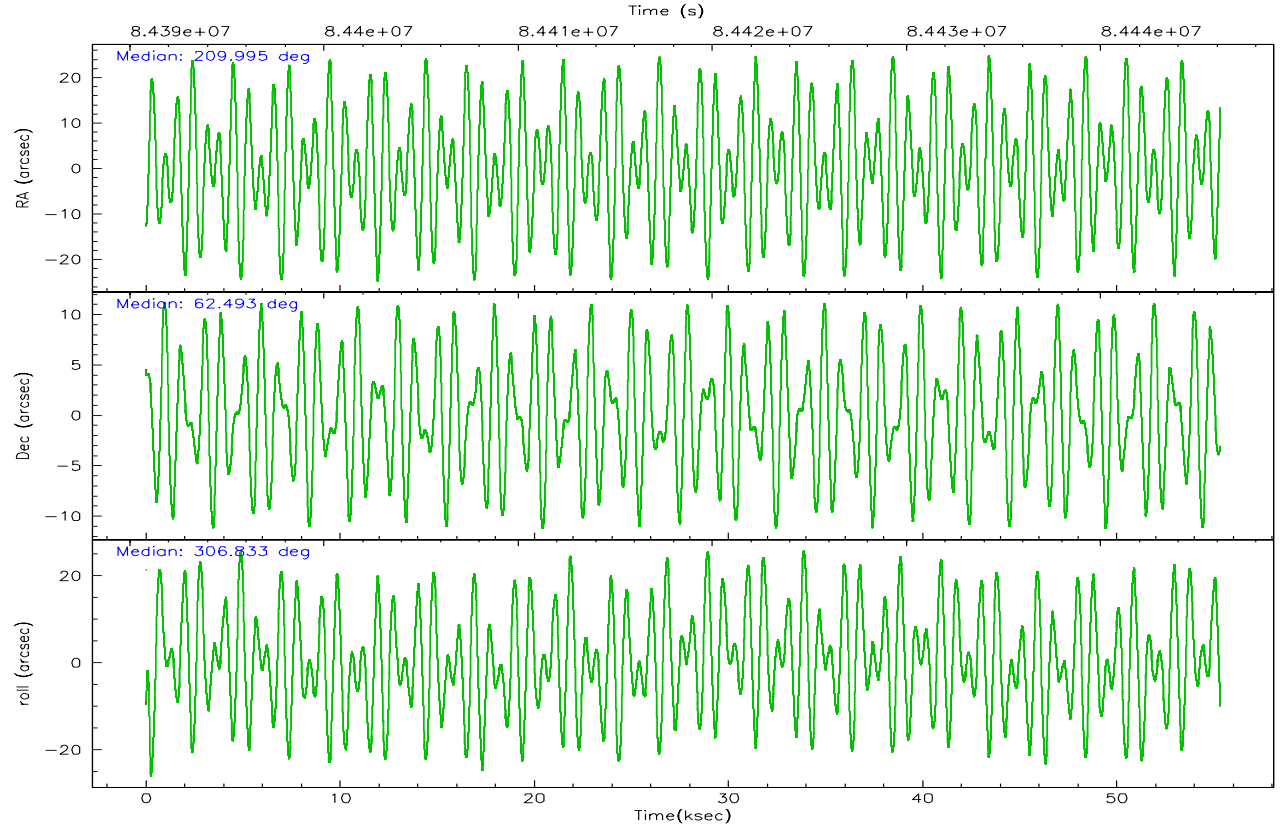
	ccd 2	ccd 3	ccd 5	ccd 6	ccd 7	ccd 8
grade 0 events	18498	15547	17430	18181	28354	27361
	5%	4%	3%	5%	6%	6%
grade 1 events	160	153	482	159	379	219
	0%	0%	0%	0%	0%	0%
grade 2 events	8106	6937	59676	7539	42509	17082
	2%	2%	13%	2%	9%	4%
grade 3 events	3606	3465	9922	3851	19639	8498
	1%	1%	2%	1%	4%	2%
grade 4 events	3503	3515	9628	3735	19544	7957
	1%	1%	2%	1%	4%	1%
grade 5 events	10781	11646	34363	13350	39173	16833
	3%	3%	7%	3%	8%	4%
grade 6 events	6300	6209	107706	7252	98055	20290
	1%	1%	24%	2%	22%	4%
grade 7 events	287904	275063	202759	280618	193404	320105
	84%	85%	45%	83%	43%	76%

2.2 Compared Parameters

Parameter	Planned	Actual	Parameter	Planned	Actual
Instrument	ACIS	ACIS	Obspar format version number	6	6
Detector	ACIS-235678	ACIS-235678	Obspar file type	PREDICTED	ACTUAL
Grating	NONE	NONE	Obspar update status	NONE	UPDATED
Data mode	FAINT	FAINT	Number of optional ACIS chips dropped	0	0
Observation mode	POINTING	POINTING	On-chip summing requested	N	N
Pointing RA	209.940967	209.9955840492211	Subarray requested	NONE	NONE
Pointing Dec	62.503858	62.49328007439104	Alternating exposures requested	N	N
Pointing Roll	306.726769	306.8349371838816	Primary exposure time	3.200000	3.2
SIM focus pos (mm)	-0.684267	-0.6828225247311905			
SIM defocus (mm)	0	0.001444936568705701			
SIM translation stage pos (mm)	-190.132523	-190.1400660498719			
SIM translation stage offset (mm)	0	0.00754346686406393			
Observation start time	84391031.184000	84390249.585484			
Observation start date	2000-09-03T17:56:07	2000-09-03T17:44:09			
Observation end time	84446031.184000	84446861.36261			
Observation end date	2000-09-04T09:12:47	2000-09-04T09:27:41			
Read mode	TIMED	TIMED			

2.3 Aspect



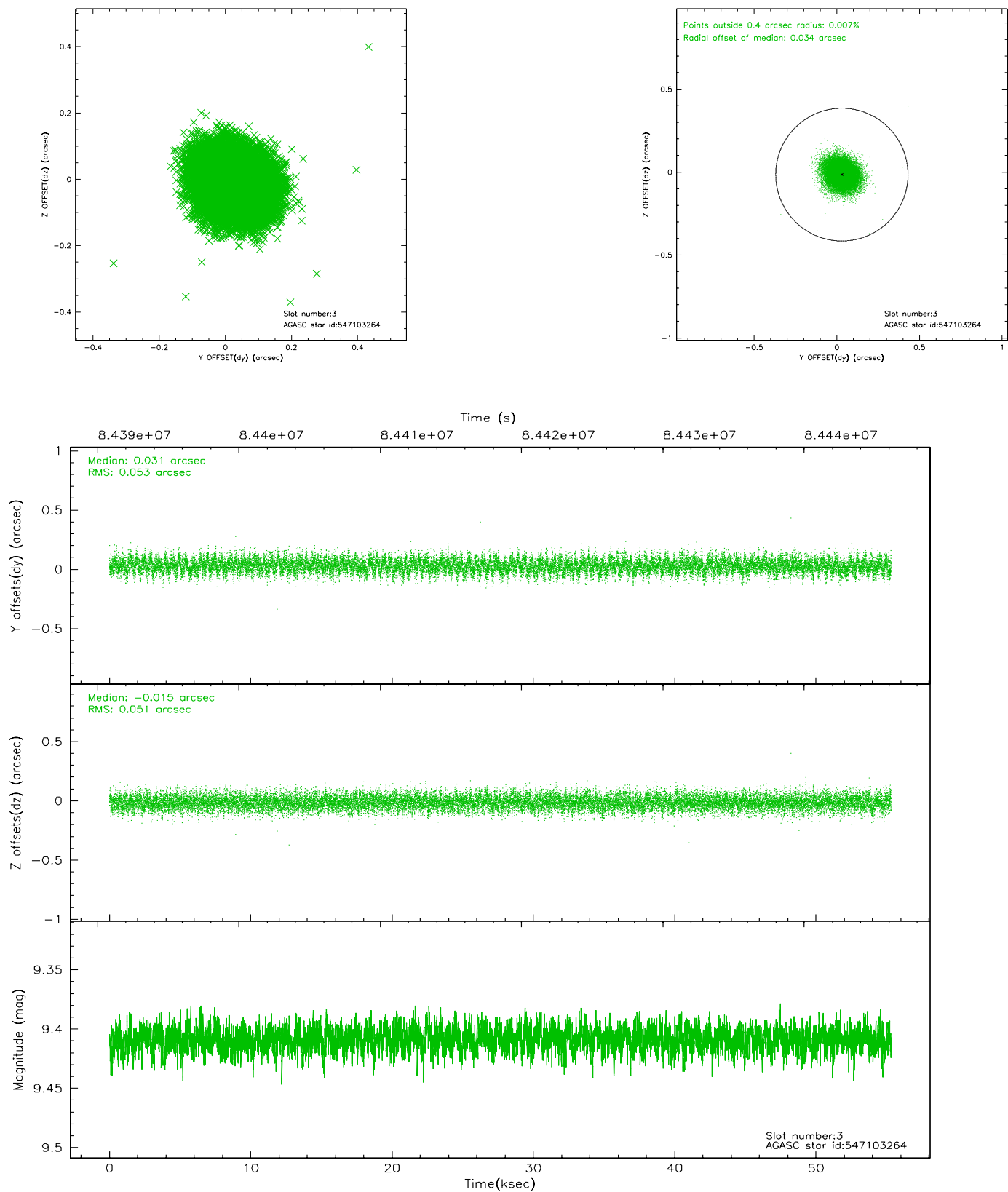


Slot Statistics

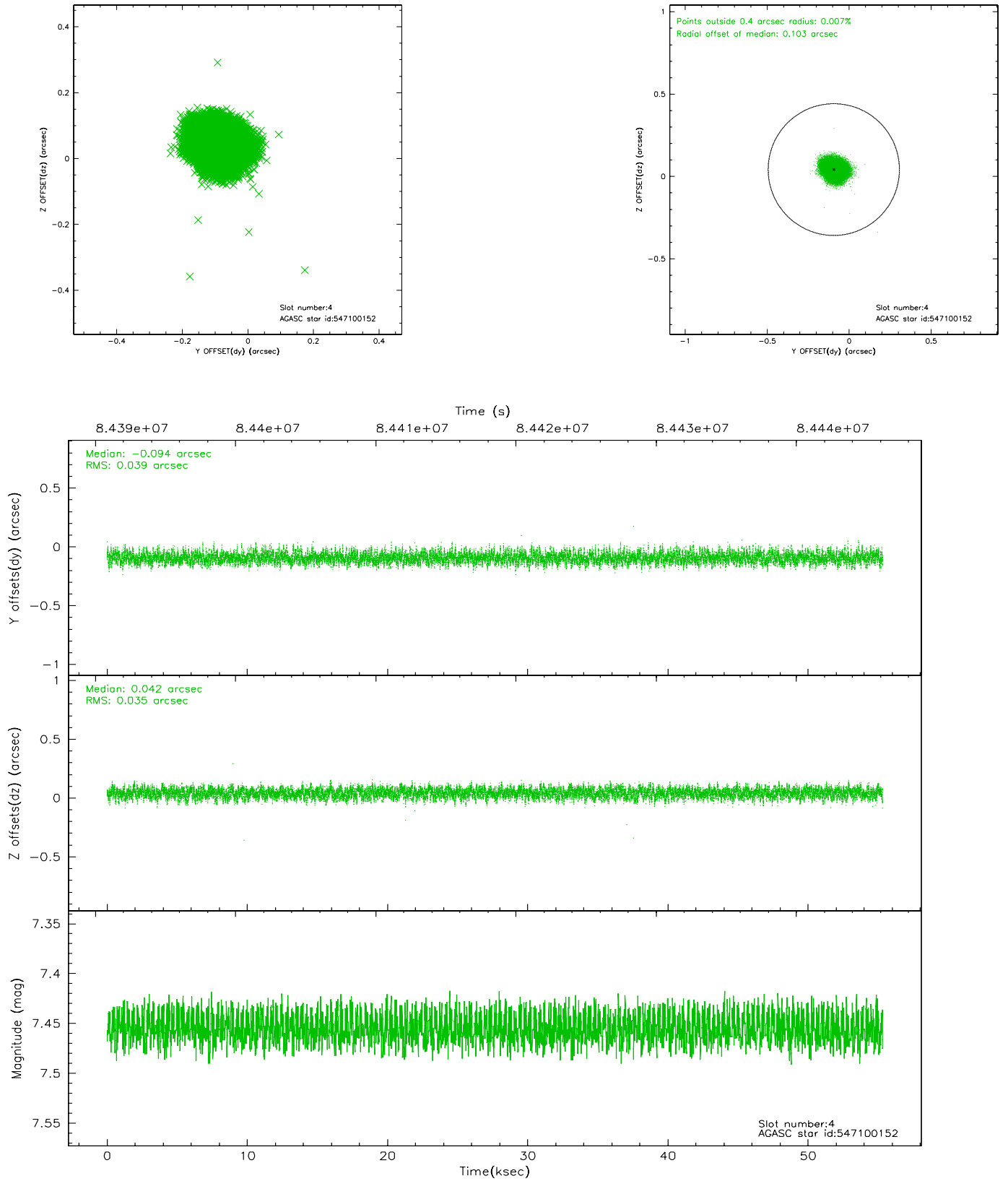
slot	status	id	mag	n_pts	med_dy	med_dz	dr1	dr2	ra	dec	mean_y	mean_z
0	FID	ACIS-S-2	7.11	13493	-0.022	0.035	0.007	0.011	0.000000	0.000000	-754.25	-1727.17
1	FID	ACIS-S-4	7.21	13493	-0.073	0.001	0.005	0.009	0.000000	0.000000	2158.98	181.33
2	FID	ACIS-S-5	7.23	13496	0.063	-0.027	0.006	0.010	0.000000	0.000000	-1807.05	174.91
3	GUIDE	547103264	9.41	26978	0.031	-0.015	0.078	0.128	209.099242	62.568289	-1027.61	-974.15
4	GUIDE	547100152	7.45	26984	-0.094	0.042	0.057	0.089	209.266185	62.792313	-1501.00	-265.21
5	GUIDE	547097664	8.65	26985	-0.011	-0.026	0.062	0.099	210.302226	62.577038	145.86	639.17
6	GUIDE	546701928	9.99	26967	0.032	0.044	0.120	0.198	208.434731	62.460629	-1397.39	-2084.26
7	GUIDE	547102544	10.05	26830	0.040	-0.044	0.107	0.175	209.734827	62.868804	-1255.59	515.21

2.4 Star Slots

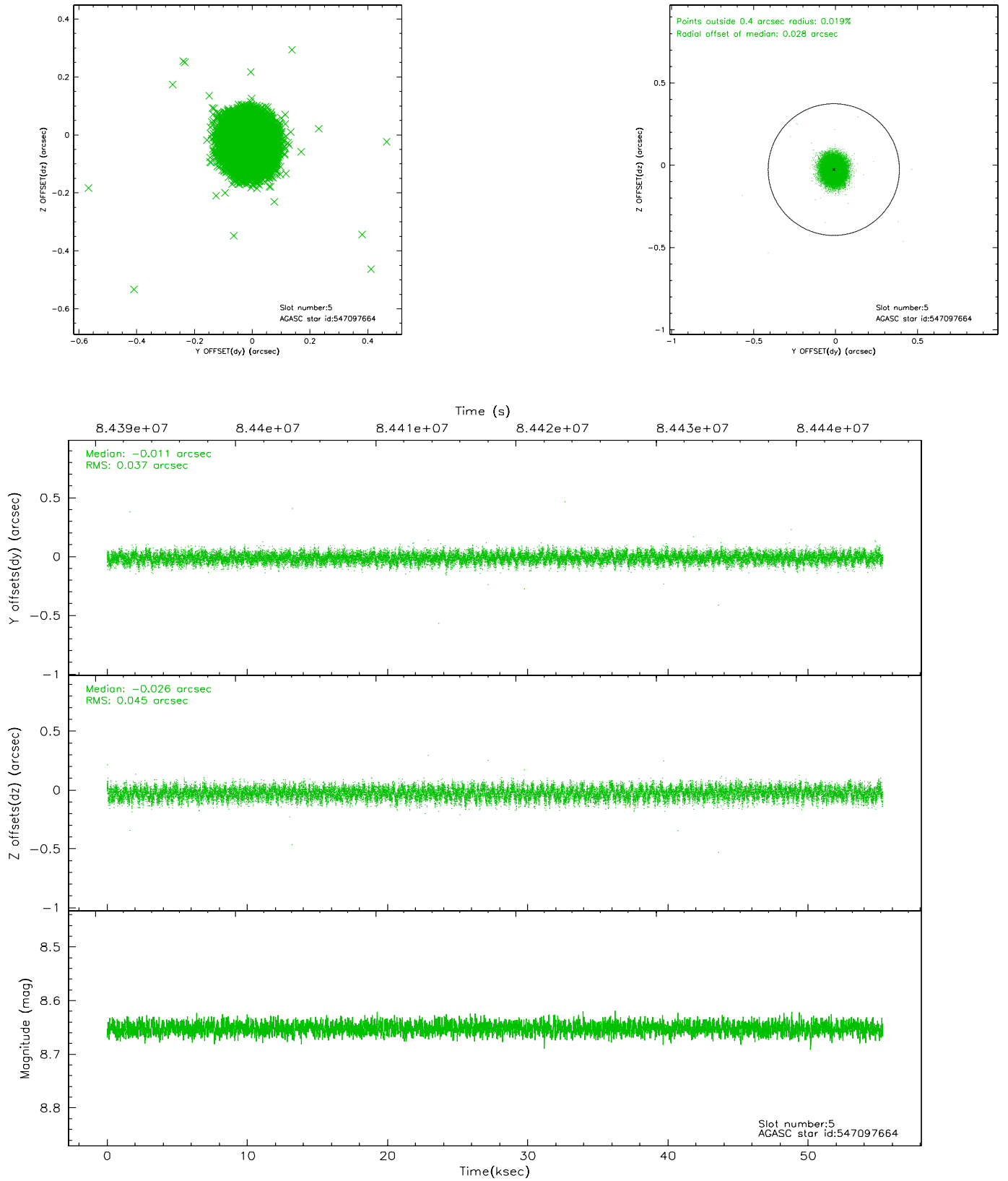
2.4.1 Slot 3



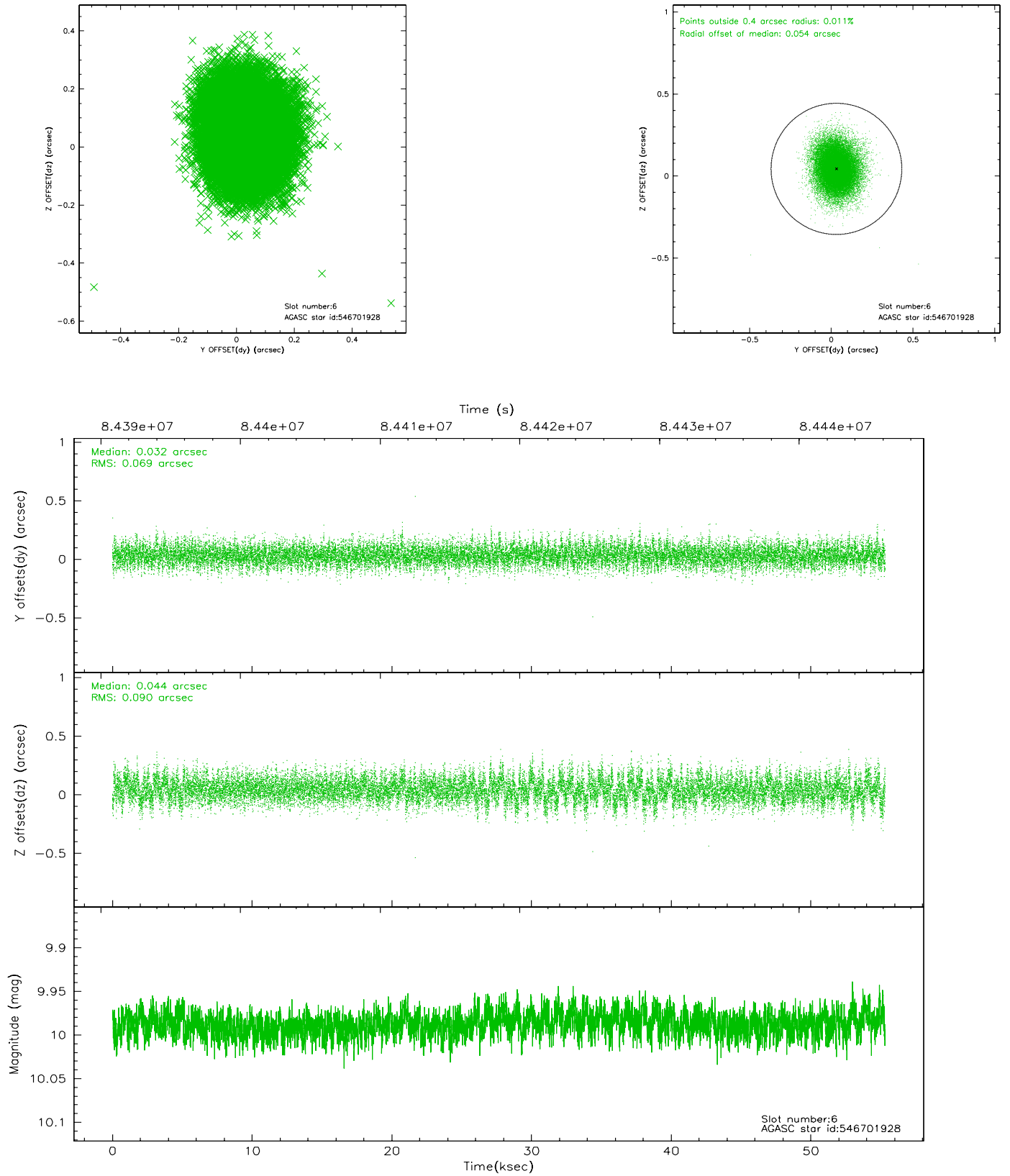
2.4.2 Slot 4



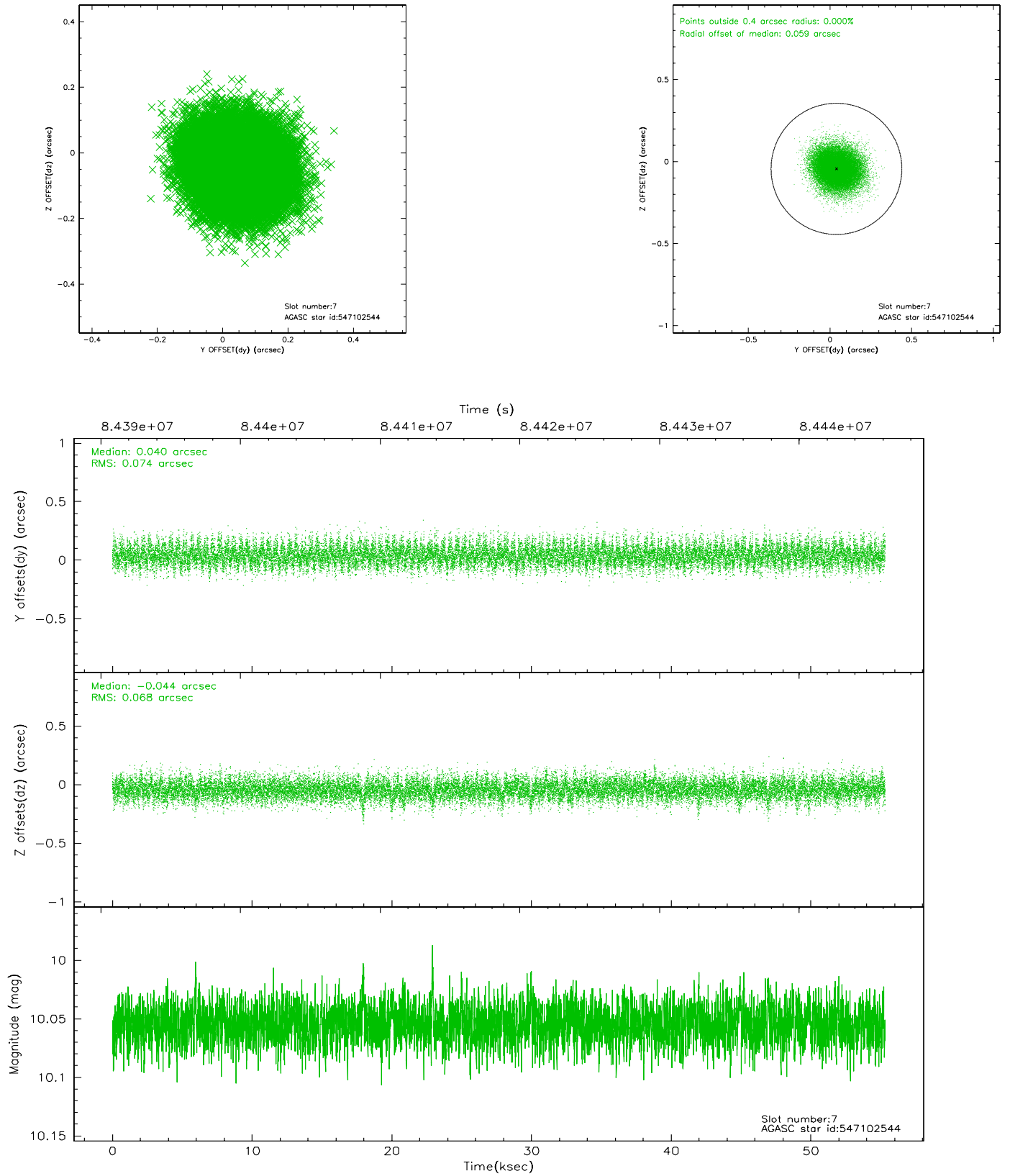
2.4.3 Slot 5



2.4.4 Slot 6

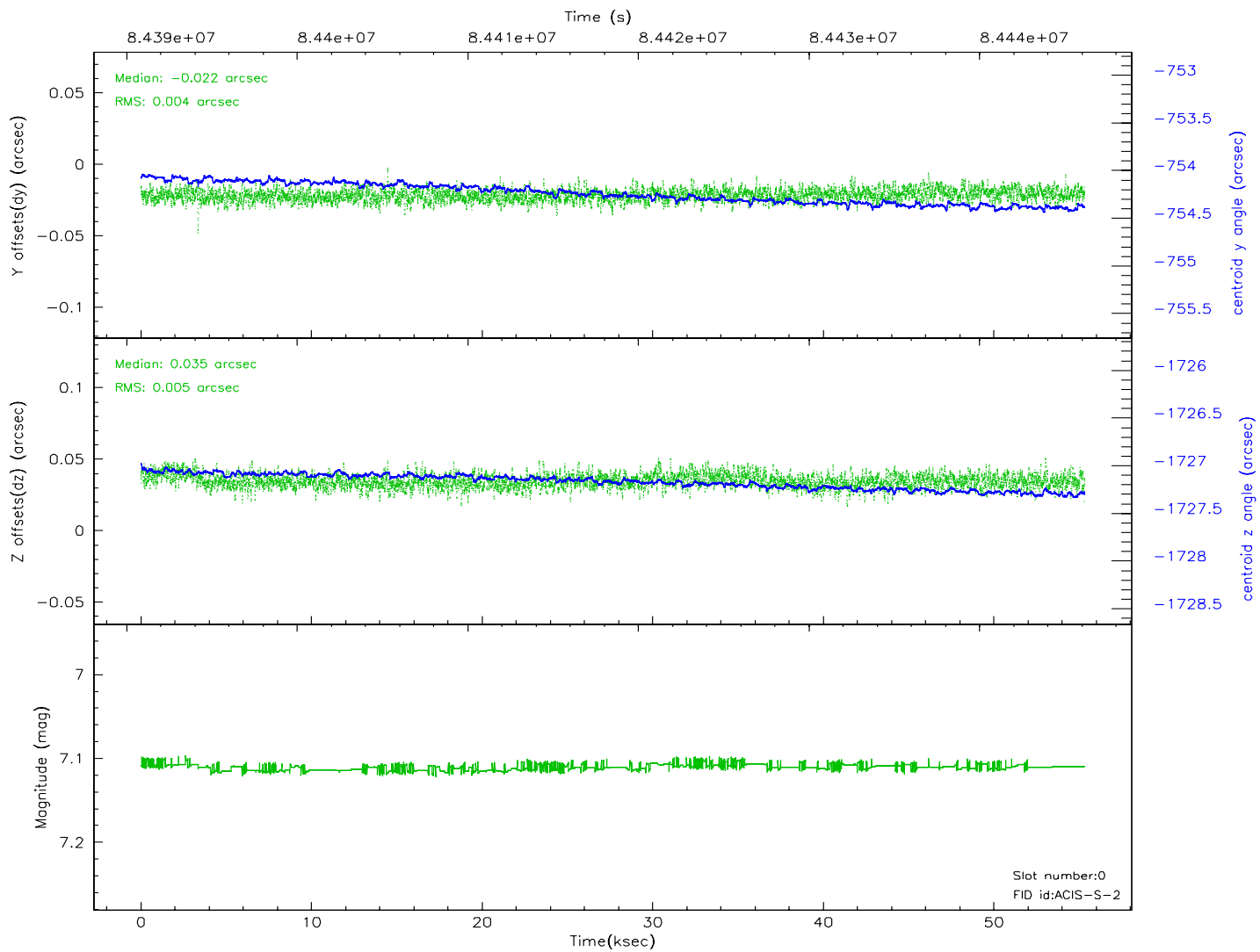
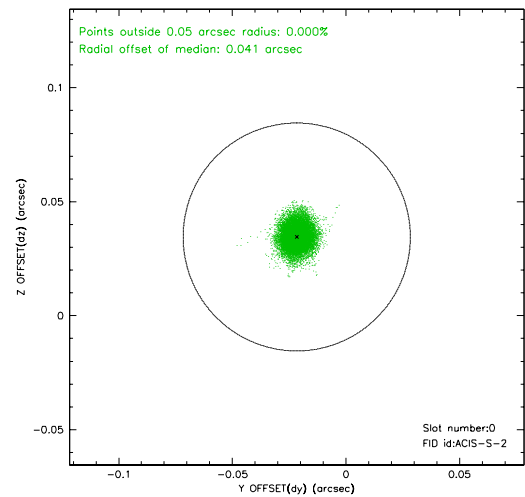
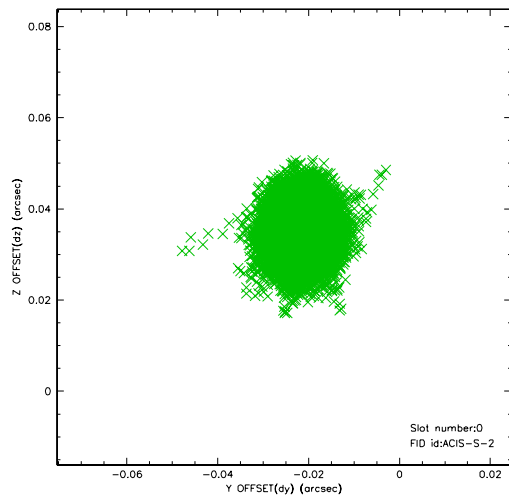


2.4.5 Slot 7

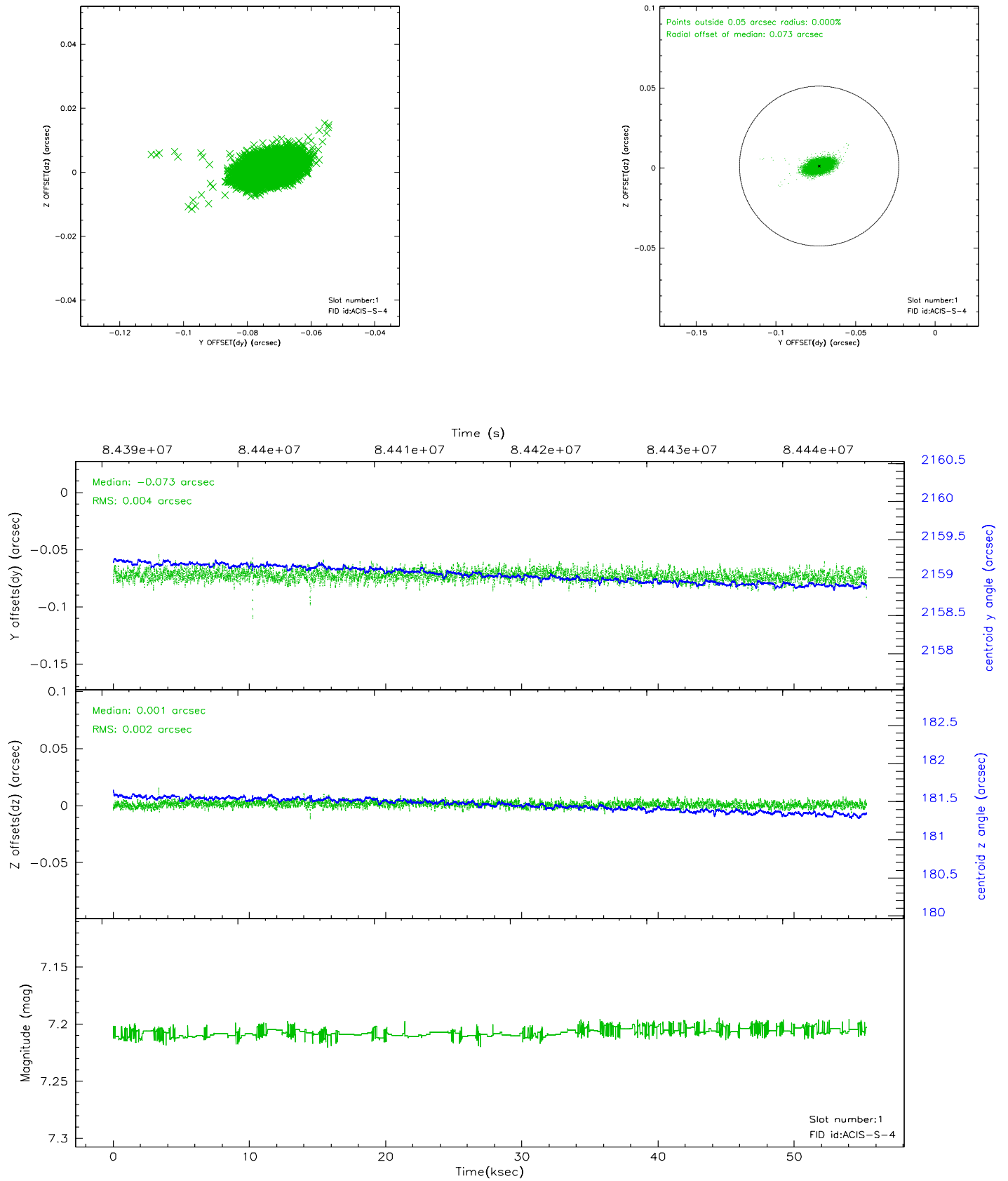


2.5 FID Slots

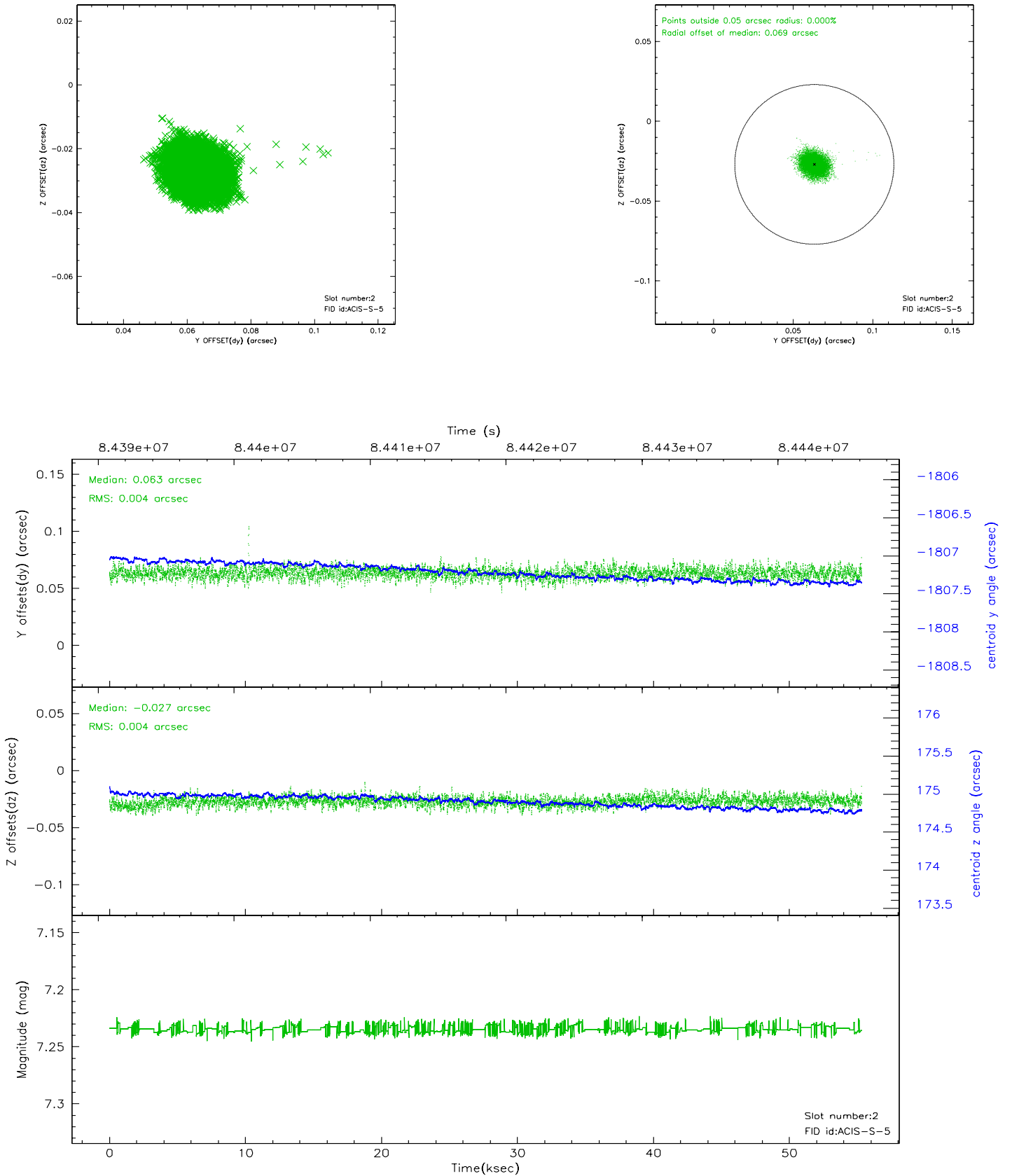
2.5.1 Slot 0



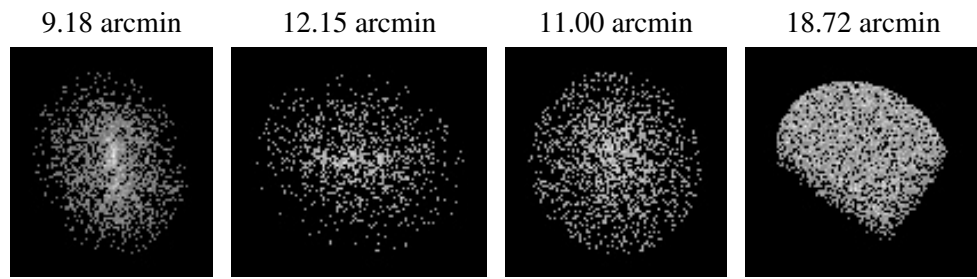
2.5.2 Slot 1



2.5.3 Slot 2



3 Point Sources



A Summary

A.1 Status

V&V Scientist	Jen Lauer
V&V Date (YYYY-MM-DD)	2007.06.07
V&V Edition	1
V&V Disposition and Status	OK
V&V Charge Time	54.755

A.2 Comments