

V&V Reference Report

L2 ASCDS Version : 7.6.10

Observation 499 - L2 Version 001
Chandra X-Ray Center

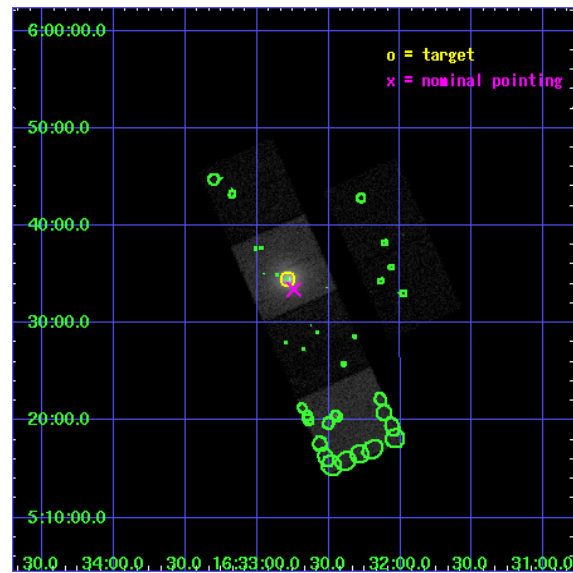
L2 Processing Date : May 31 2007

Contents

1	Front	2
2	OBI	3
2.1	OBI	3
2.1.1	Images	3
2.1.2	Bias	3
2.1.3	Parameters	4
2.1.4	Events	4
2.2	Compared Parameters	5
2.3	Aspect	6
2.4	Star Slots	9
2.4.1	Slot 3	9
2.4.2	Slot 4	10
2.4.3	Slot 5	11
2.4.4	Slot 6	12
2.4.5	Slot 7	13
2.5	FID Slots	14
2.5.1	Slot 0	14
2.5.2	Slot 1	15
2.5.3	Slot 2	16
3	Point Sources	17
A	Summary	18
A.1	Status	18
A.2	Comments	18

1 Front

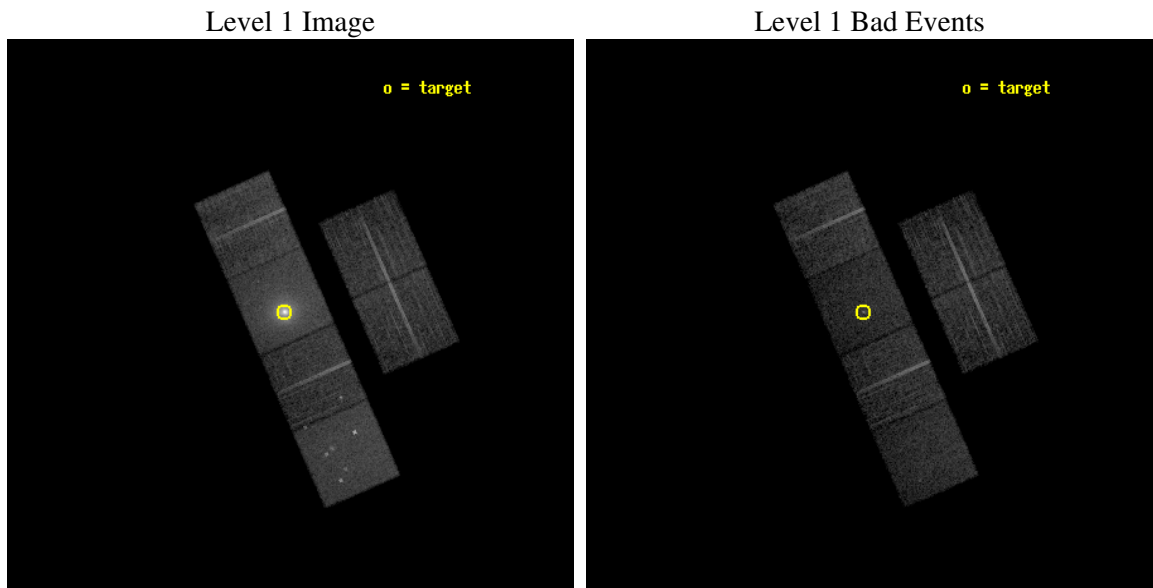
seq_num	800007
obs_id	499
title	THE MASSIVE COOLING FLOW IN A2204
observer	Professor Andrew Fabian
object	A2204
dtcycle	0
cycle	P
ra_targ	248.195833
dec_targ	5.575833
ra_nom	248.18567726207
dec_nom	5.557393680659
roll_nom	246.33253844783
revision	3
ontime	10195.200009495
livetime	10066.102248162
ontime2	10195.200009495
ontime3	10195.200009495
ontime5	10195.200009495
ontime6	10195.200009495
ontime7	10195.200009495
ontime8	10195.200009495
l2events	160942



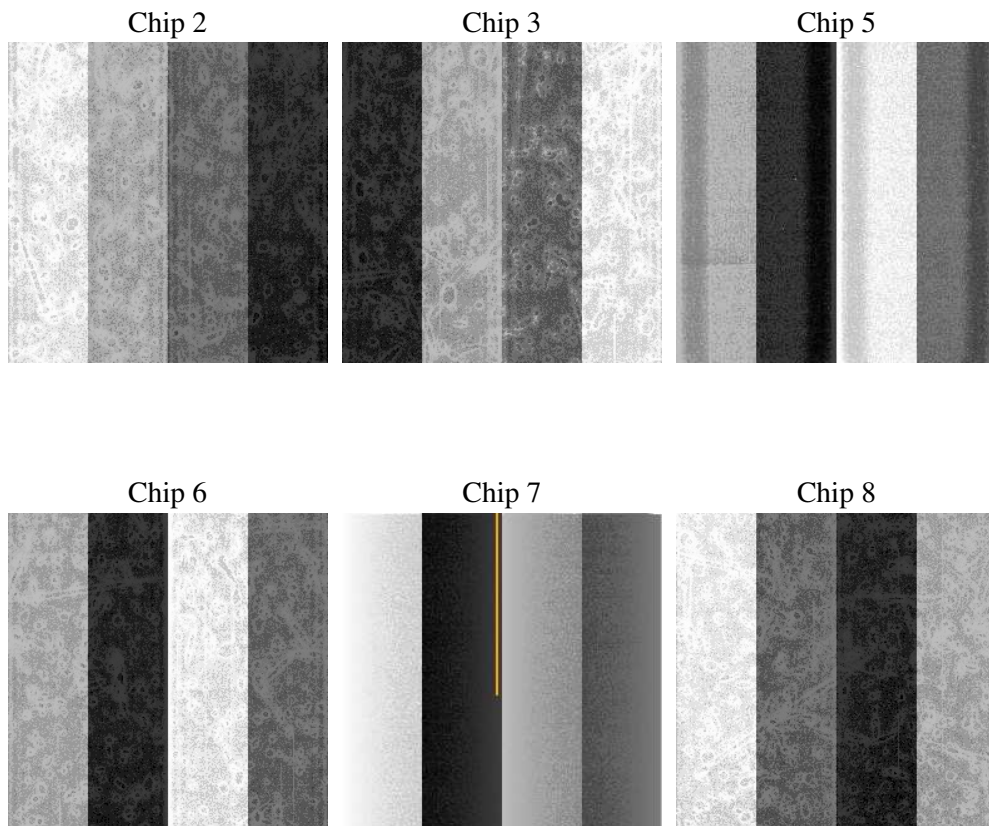
2 OBI

2.1 OBI

2.1.1 Images



2.1.2 Bias



2.1.3 Parameters

obi_num	0
ascdsver	7.6.10
caldbver	3.4.0
date	2007-06-01T02:35:30
revision	3

sched_exp_time	10000.000000
ontime	10195.200009495
ontime2	10195.200009495
ontime3	10195.200009495
ontime5	10195.200009495
ontime6	10195.200009495
ontime7	10195.200009495
ontime8	10195.200009495
l1events	489120

2.1.4 Events

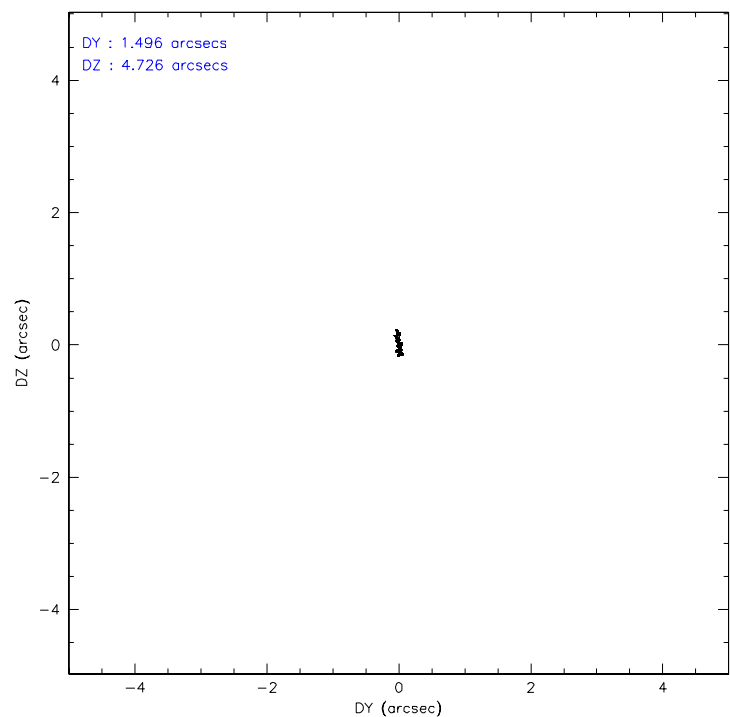
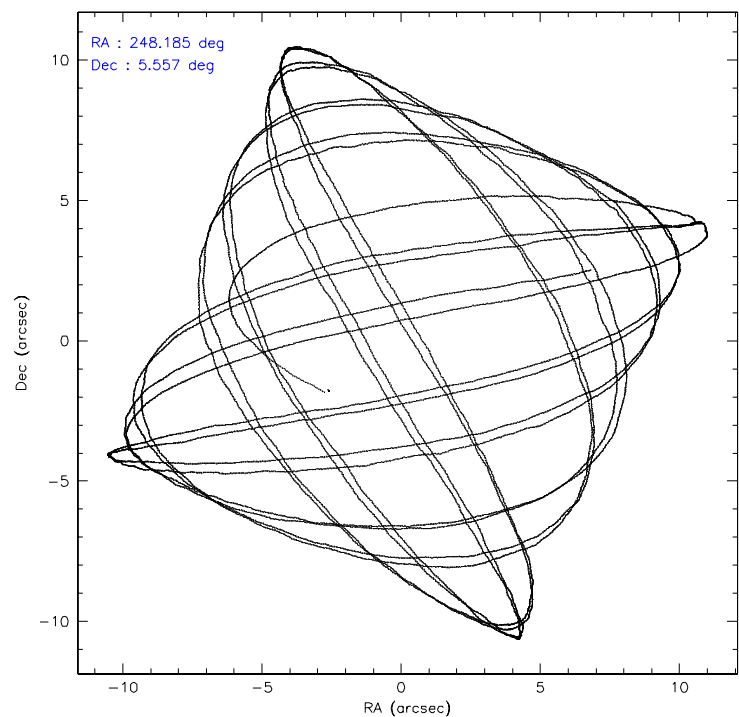
	ccd 2	ccd 3	ccd 5	ccd 6	ccd 7	ccd 8
level 1 events	63661	60516	83884	61462	140894	78703
rejected events	56085	53344	43341	51986	43677	60119
rejected %	88%	88%	51%	84%	30%	76%

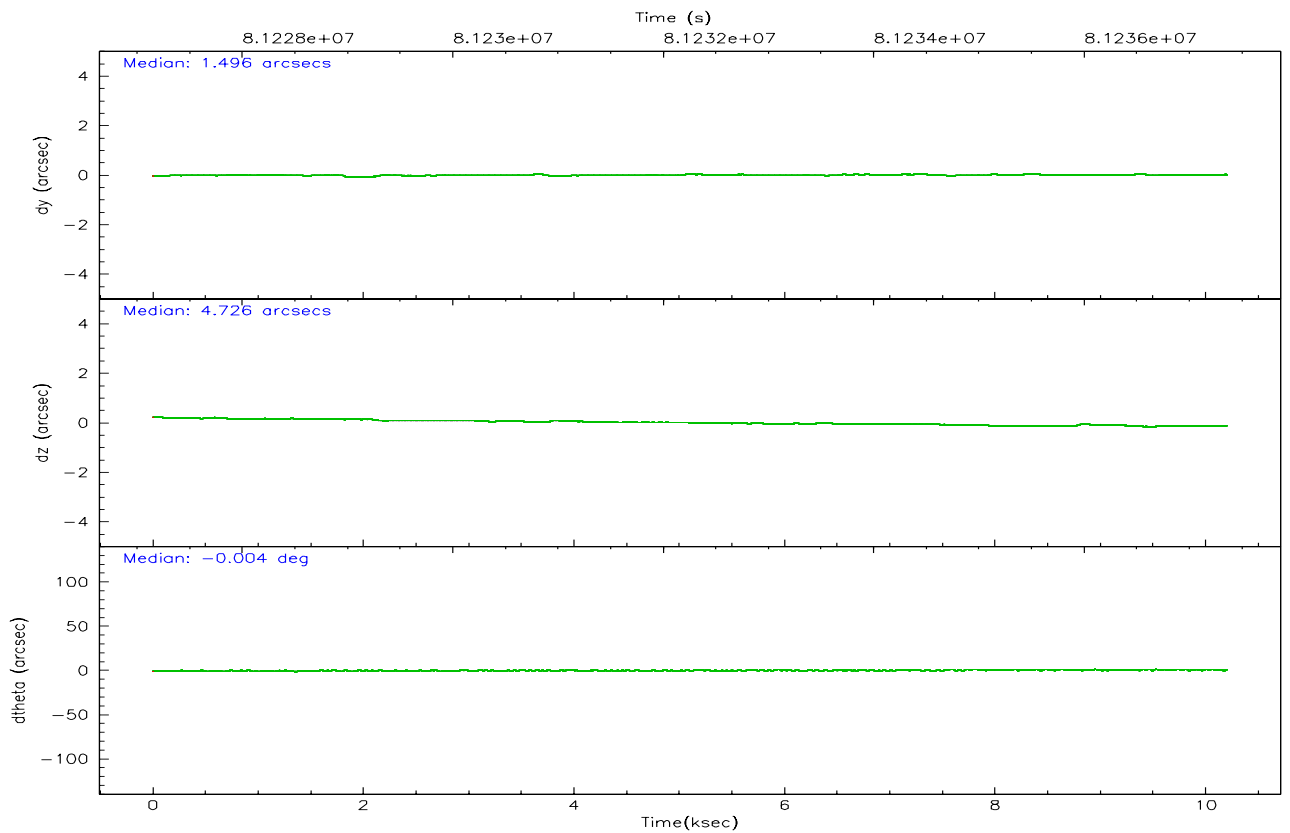
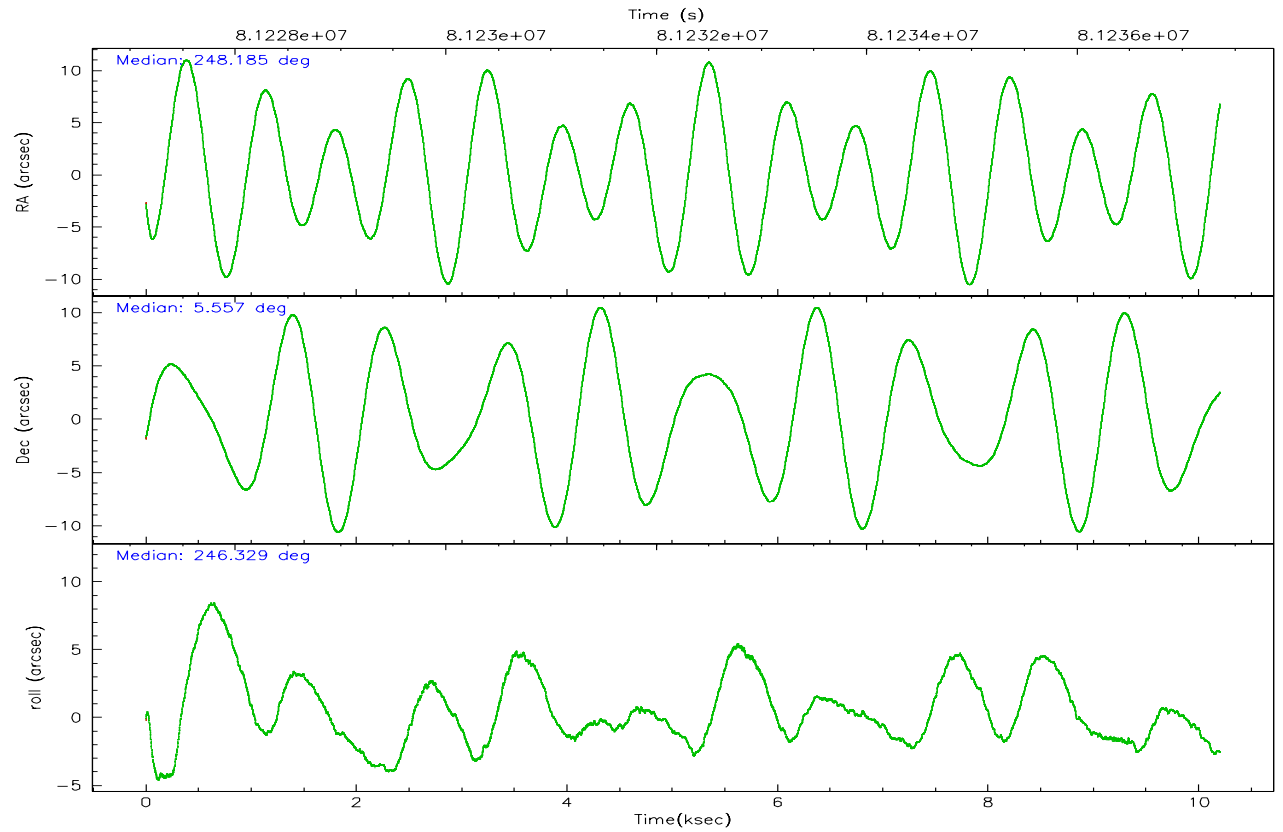
	ccd 2	ccd 3	ccd 5	ccd 6	ccd 7	ccd 8
grade 0 events	3580	3533	7517	5368	24733	6496
	5%	5%	8%	8%	17%	8%
grade 1 events	27	31	126	23	132	49
	0%	0%	0%	0%	0%	0%
grade 2 events	1626	1343	11639	1656	23779	3796
	2%	2%	13%	2%	16%	4%
grade 3 events	660	636	1827	761	10759	2089
	1%	1%	2%	1%	7%	2%
grade 4 events	622	661	1739	690	10627	1901
	0%	1%	2%	1%	7%	2%
grade 5 events	1956	1982	5981	2349	7411	2971
	3%	3%	7%	3%	5%	3%
grade 6 events	1232	1134	18703	1311	28696	4650
	1%	1%	22%	2%	20%	5%
grade 7 events	53958	51196	36352	49304	34757	56751
	84%	84%	43%	80%	24%	72%

2.2 Compared Parameters

Parameter	Planned	Actual	Parameter	Planned	Actual
Instrument	ACIS	ACIS	Obspar format version number	6	6
Detector	ACIS-235678	ACIS-235678	Obspar file type	PREDICTED	ACTUAL
Grating	NONE	NONE	Obspar update status	NONE	UPDATED
Data mode	FAINT	FAINT	Number of optional ACIS chips dropped	0	0
Observation mode	POINTING	POINTING	On-chip summing requested	N	N
Pointing RA	248.182519	248.1856772620674	Subarray requested	NONE	NONE
Pointing Dec	5.584601	5.557393680658991	Alternating exposures requested	N	N
Pointing Roll	246.176208	246.3325384478325	Primary exposure time	3.200000	3.2
SIM focus pos (mm)	-0.684267	-0.6828225247311905			
SIM defocus (mm)	0	0.001444936568705701			
SIM translation stage pos (mm)	-190.132523	-190.1425803651734			
SIM translation stage offset (mm)	0	0.01005778216563158			
Observation start time	81227357.184000	81226182.604645			
Observation start date	2000-07-29T03:08:13	2000-07-29T02:49:42			
Observation end time	81237357.184000	81237925.005082			
Observation end date	2000-07-29T05:54:53	2000-07-29T06:05:25			
Read mode	TIMED	TIMED			

2.3 Aspect



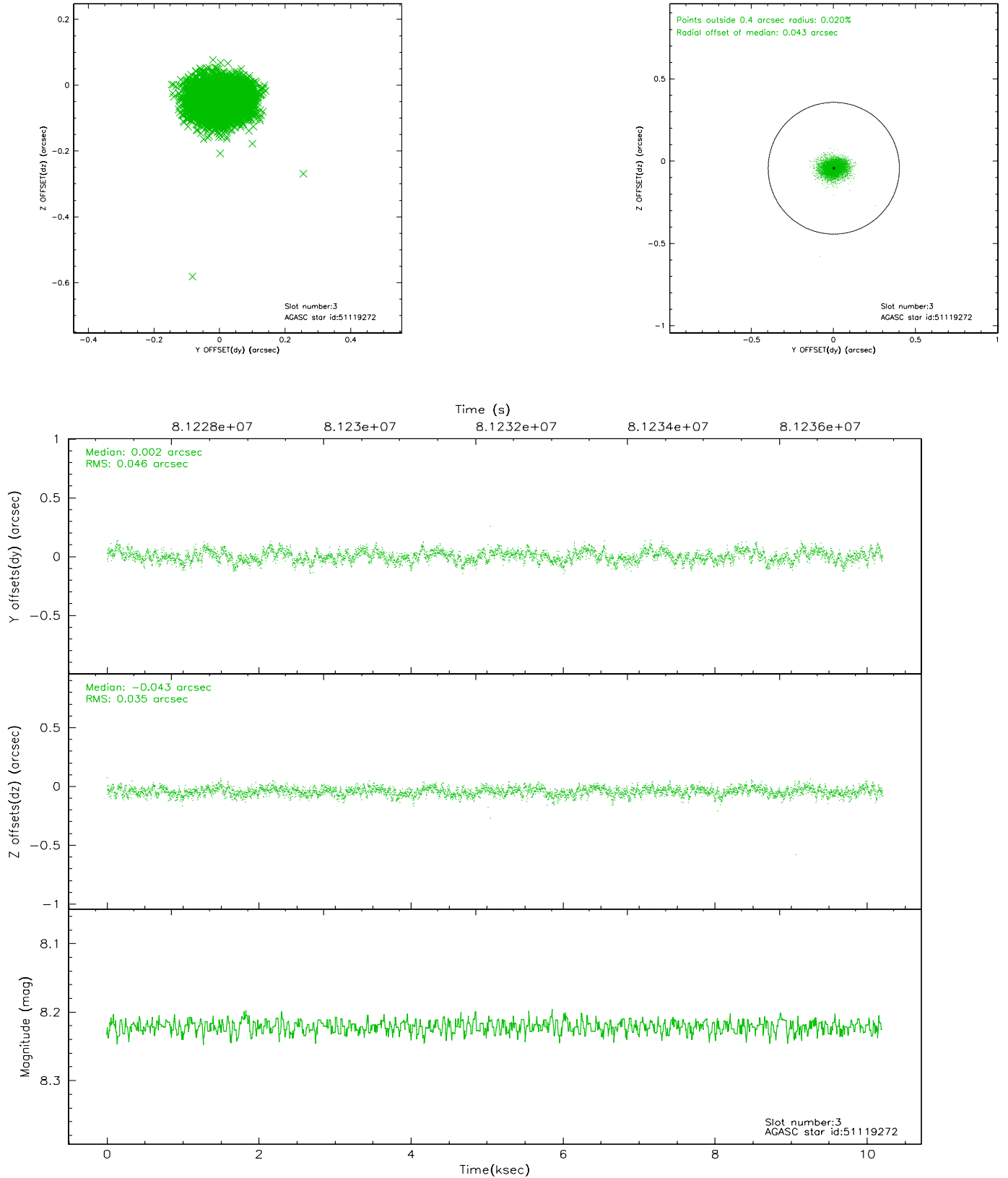


Slot Statistics

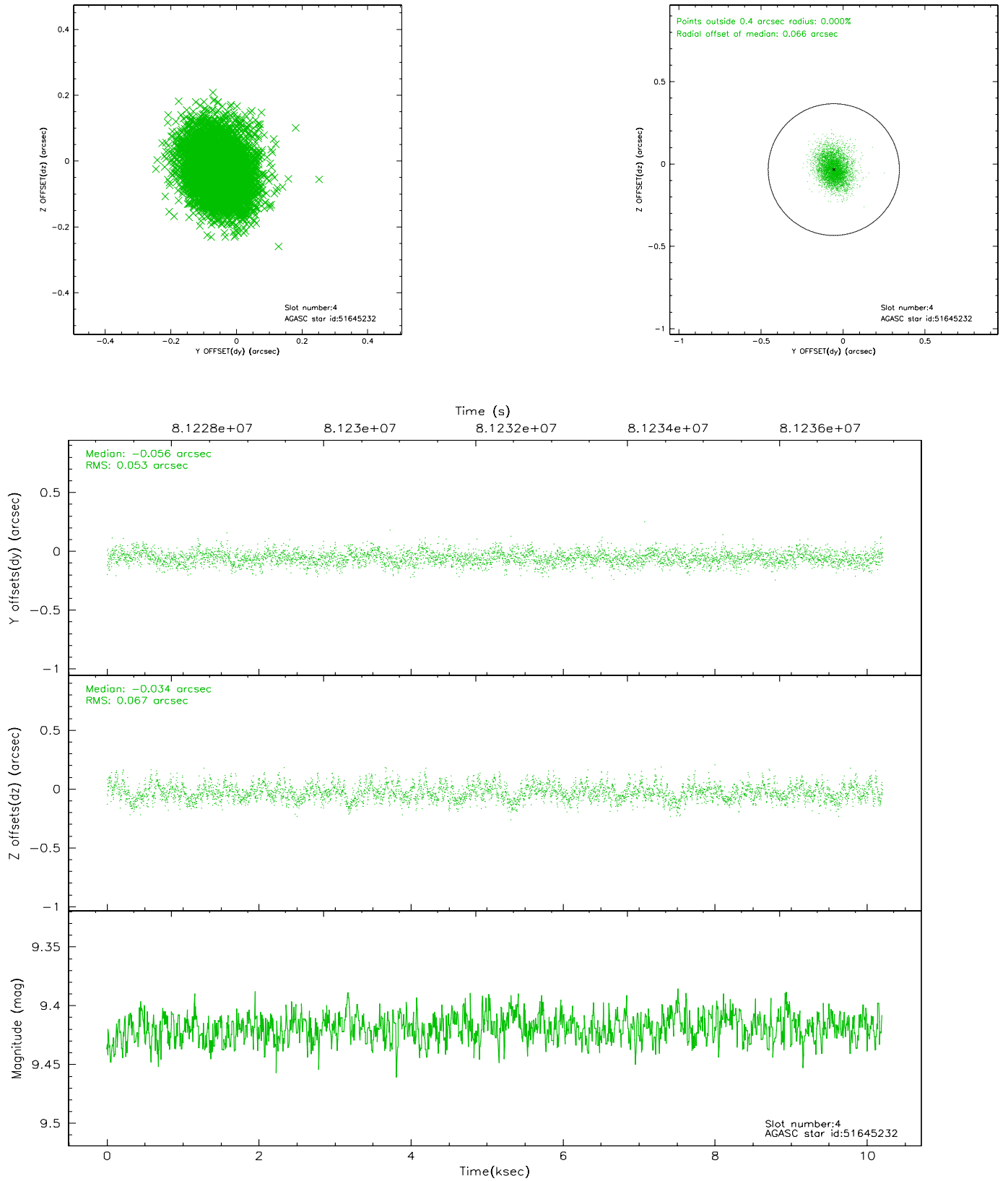
slot	status	id	mag	n_pts	med_dy	med_dz	dr1	dr2	ra	dec	mean_y	mean_z
0	FID	ACIS-S-2	7.11	2489	-0.018	0.019	0.007	0.011	0.000000	0.000000	-754.11	-1725.77
1	FID	ACIS-S-4	7.21	2489	-0.052	0.004	0.005	0.008	0.000000	0.000000	2158.89	182.16
2	FID	ACIS-S-5	7.24	2489	0.039	-0.014	0.006	0.011	0.000000	0.000000	-1806.23	176.40
3	GUIDE	51119272	8.22	4977	0.002	-0.043	0.061	0.099	247.573996	5.444578	1341.23	-1791.08
4	GUIDE	51645232	9.42	4977	-0.056	-0.034	0.090	0.151	248.578272	6.115031	-2319.23	524.62
5	GUIDE	51655616	9.60	4976	-0.039	-0.062	0.094	0.155	248.007218	6.146329	-1596.90	-1390.22
6	GUIDE	51124424	9.15	4978	-0.032	0.089	0.090	0.144	248.473295	5.223097	768.89	1479.79
7	GUIDE	51128560	9.55	4975	0.130	0.046	0.151	0.223	248.555597	4.912811	1671.78	2202.08

2.4 Star Slots

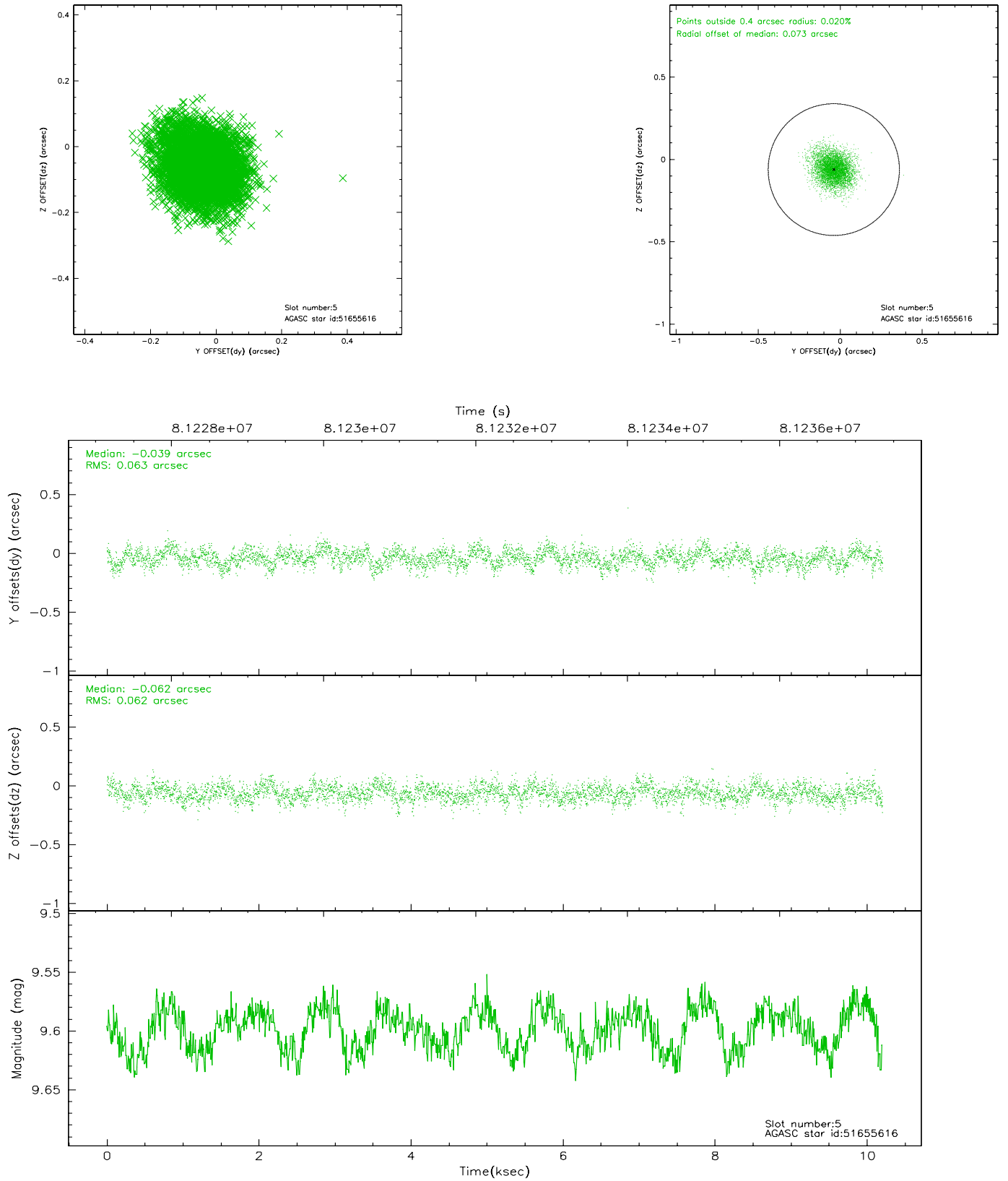
2.4.1 Slot 3



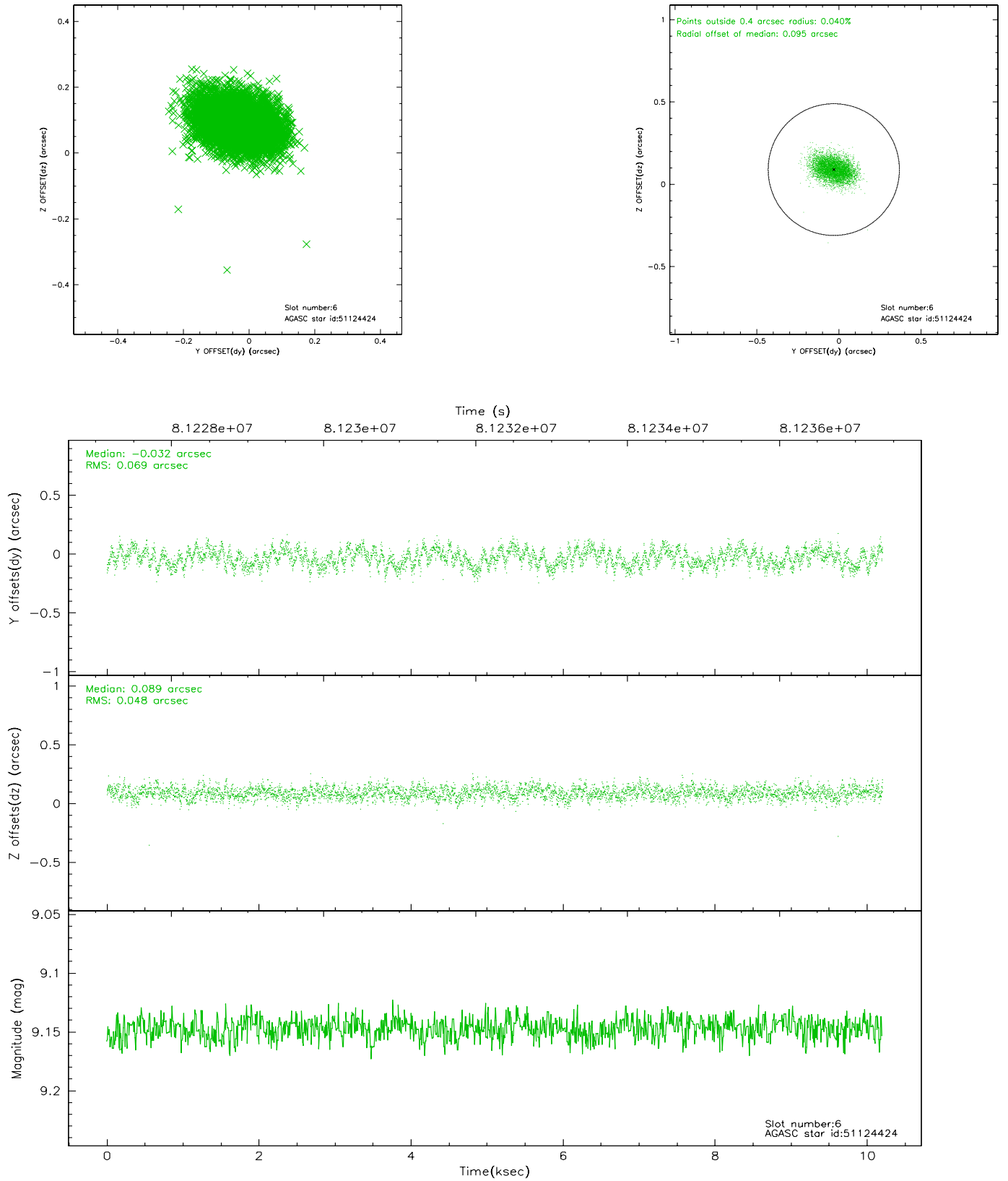
2.4.2 Slot 4



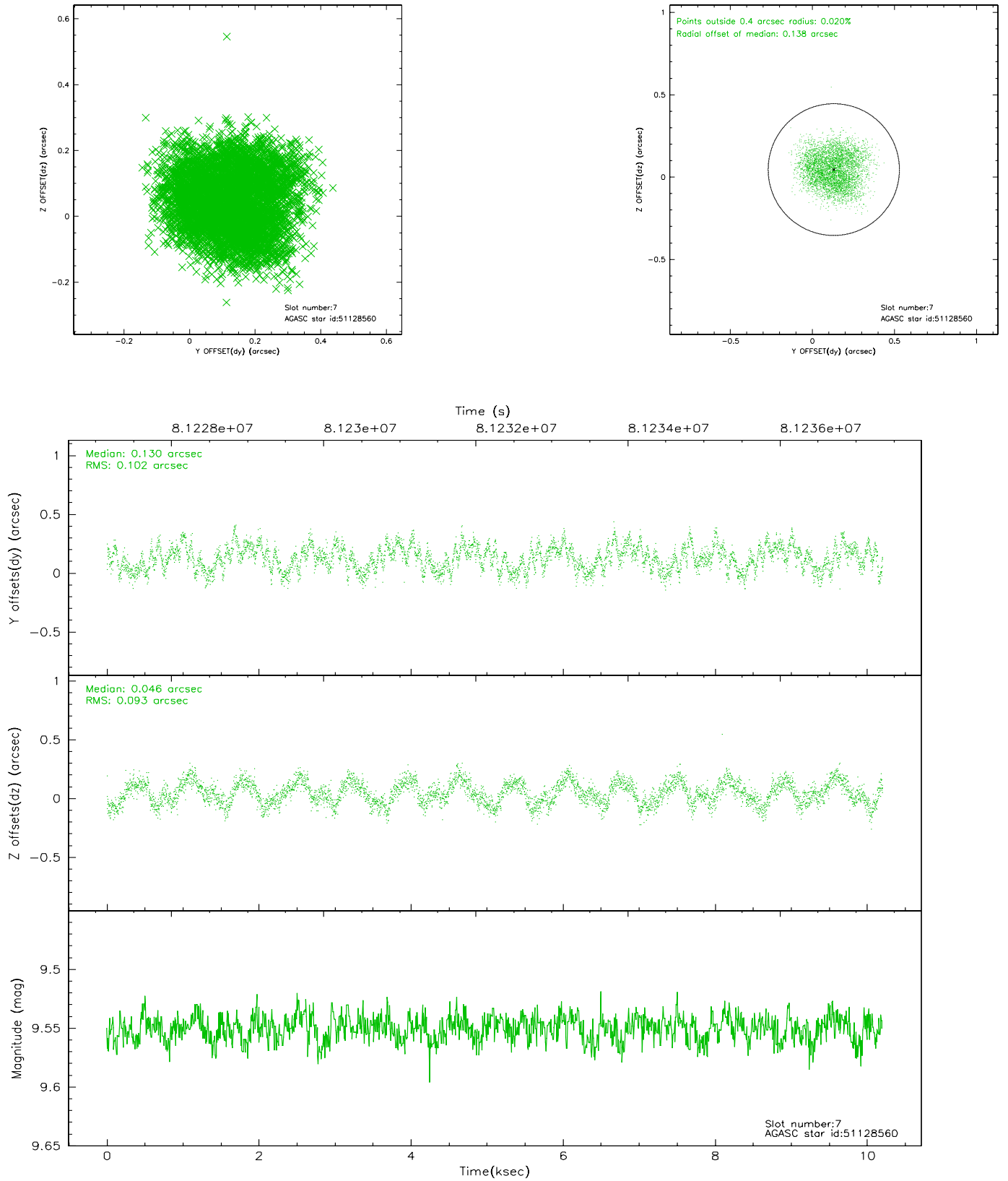
2.4.3 Slot 5



2.4.4 Slot 6

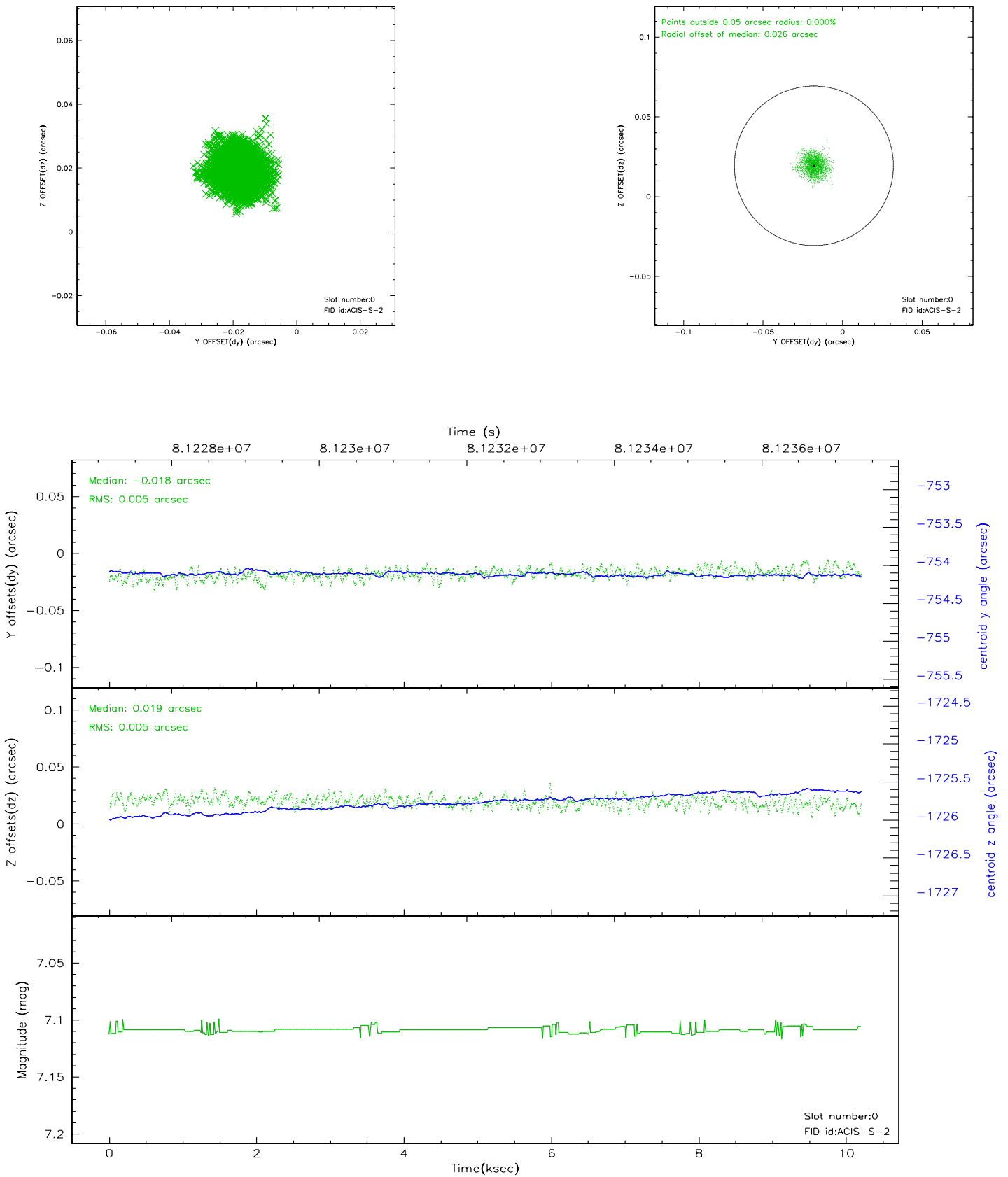


2.4.5 Slot 7

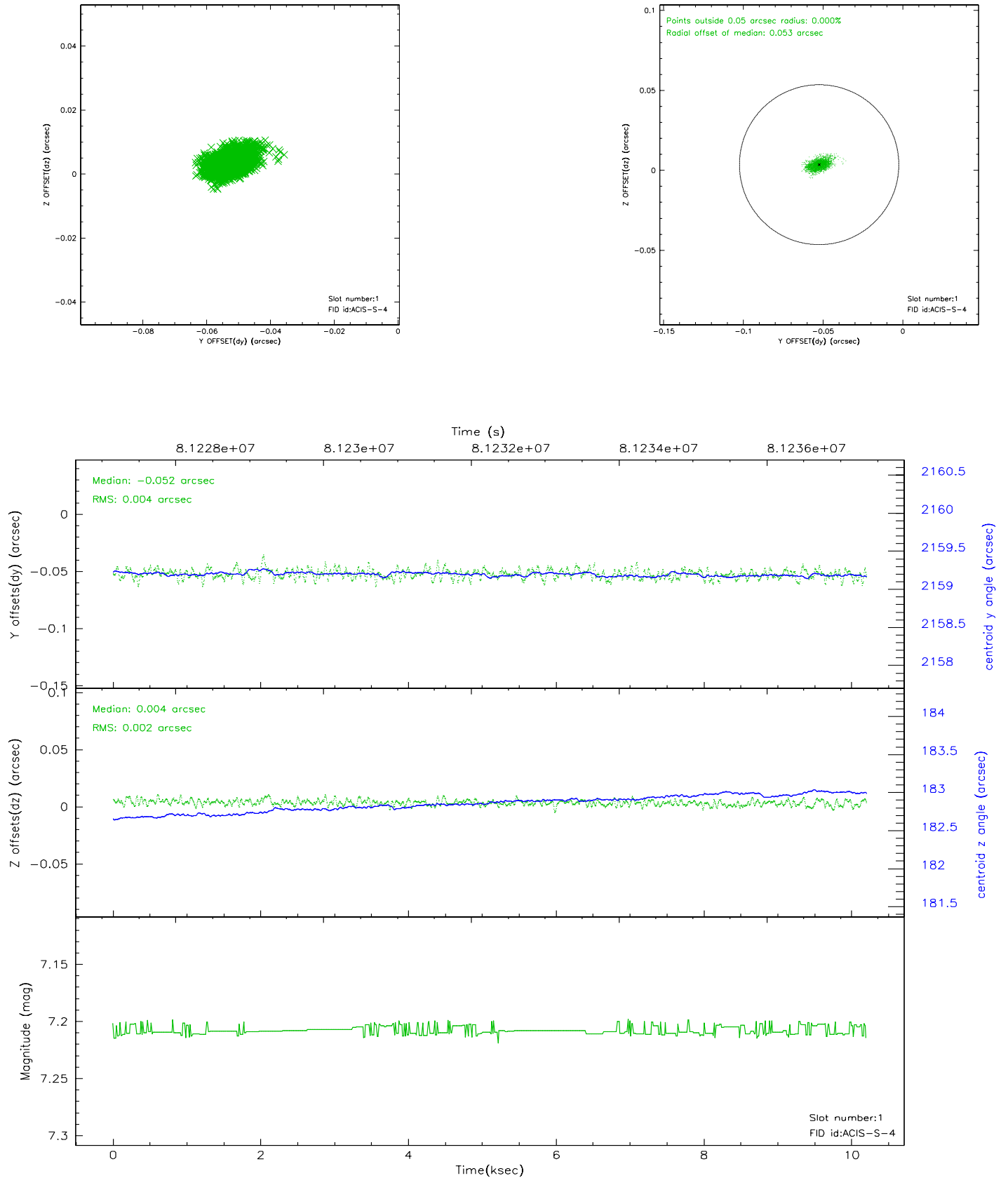


2.5 FID Slots

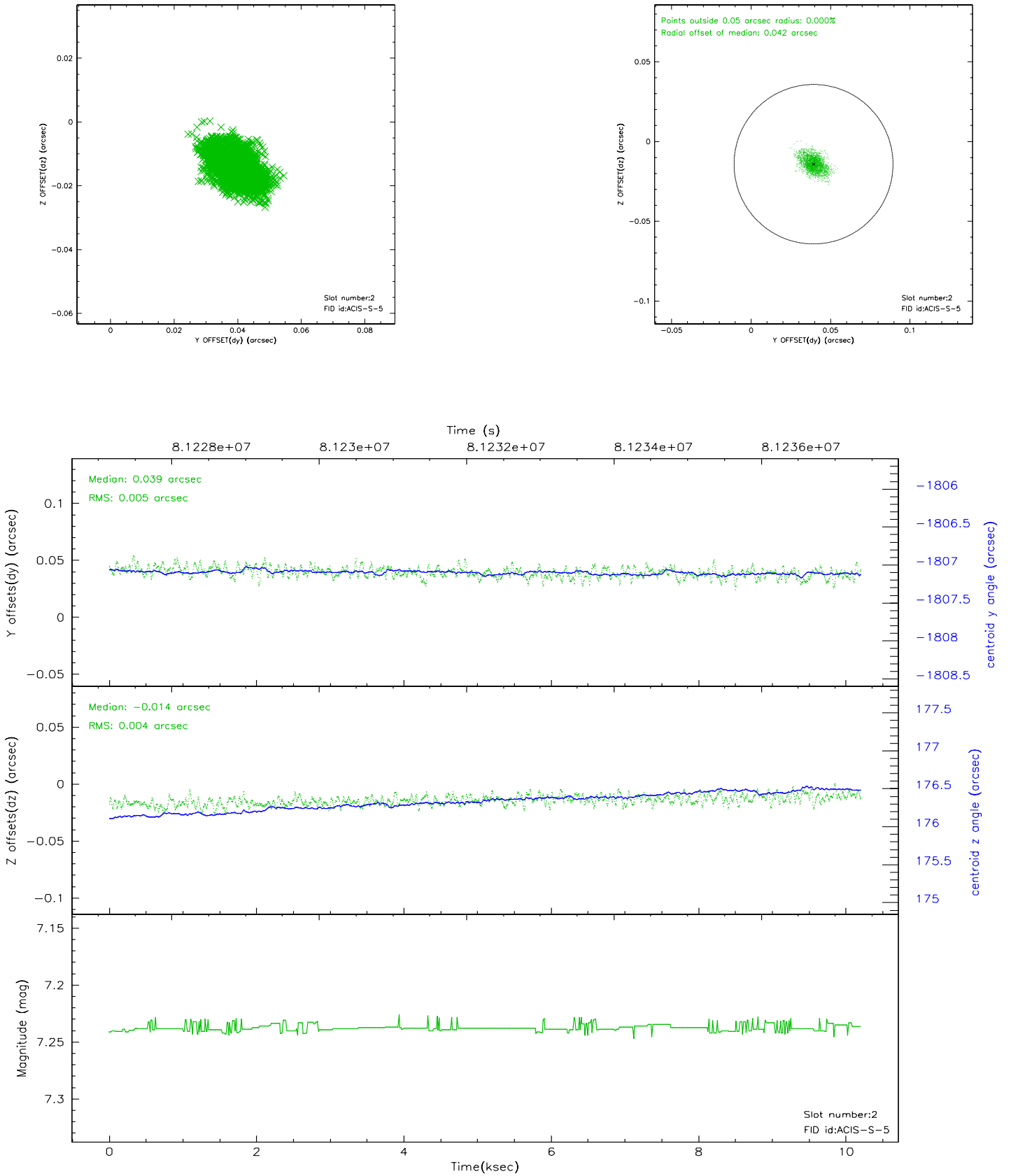
2.5.1 Slot 0



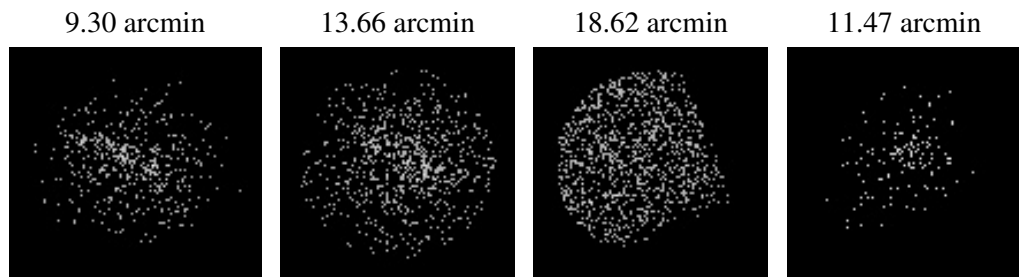
2.5.2 Slot 1



2.5.3 Slot 2



3 Point Sources



A Summary

A.1 Status

V&V Scientist	Beth Sundheim
V&V Date (YYYY-MM-DD)	2007.06.01
V&V Edition	1
V&V Disposition and Status	OK
V&V Charge Time	10.195

A.2 Comments