

V&V Reference Report

L2 ASCDS Version : 7.6.10

Observation 2309 - L2 Version 001
Chandra X-Ray Center

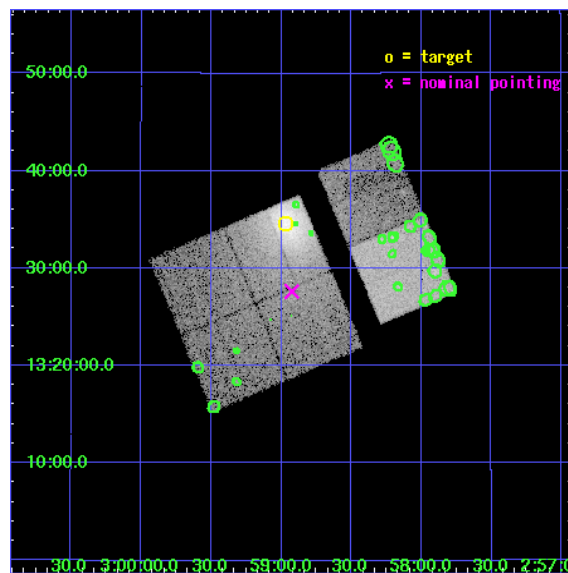
L2 Processing Date : Jun 14 2007

Contents

1	Front	2
2	OBI	3
2.1	OBI	3
2.1.1	Images	3
2.1.2	Bias	3
2.1.3	Parameters	4
2.1.4	Events	4
2.2	Compared Parameters	5
2.3	Aspect	6
2.4	Star Slots	9
2.4.1	Slot 3	9
2.4.2	Slot 4	10
2.4.3	Slot 5	11
2.4.4	Slot 6	12
2.4.5	Slot 7	13
2.5	FID Slots	14
2.5.1	Slot 0	14
2.5.2	Slot 1	15
2.5.3	Slot 2	16
3	Point Sources	17
A	Summary	18
A.1	Status	18
A.2	Comments	18

1 Front

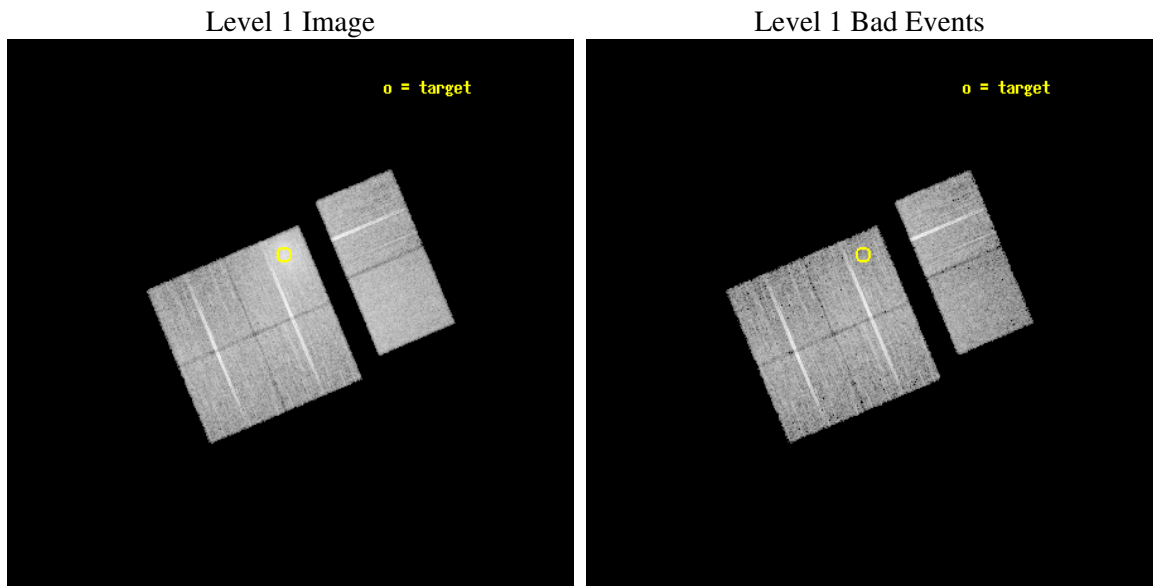
seq_num	800026
obs_id	2309
title	MASS DISTRIBUTIONS OF RELAXED CLUSTERS
observer	Dr. Stephen Murray
object	A401
dtcycle	0
cycle	P
ra_targ	44.74292
dec_targ	13.5775
ra_nom	44.731054817178
dec_nom	13.460476918593
roll_nom	67.161431105941
revision	2
ontime	11715.200010911
livetime	11566.855094326
ontime0	11715.200010911
ontime1	11715.200010911
ontime2	11715.200010911
ontime3	11715.200010911
ontime6	11715.200010911
ontime7	11715.200010911
l2events	131930



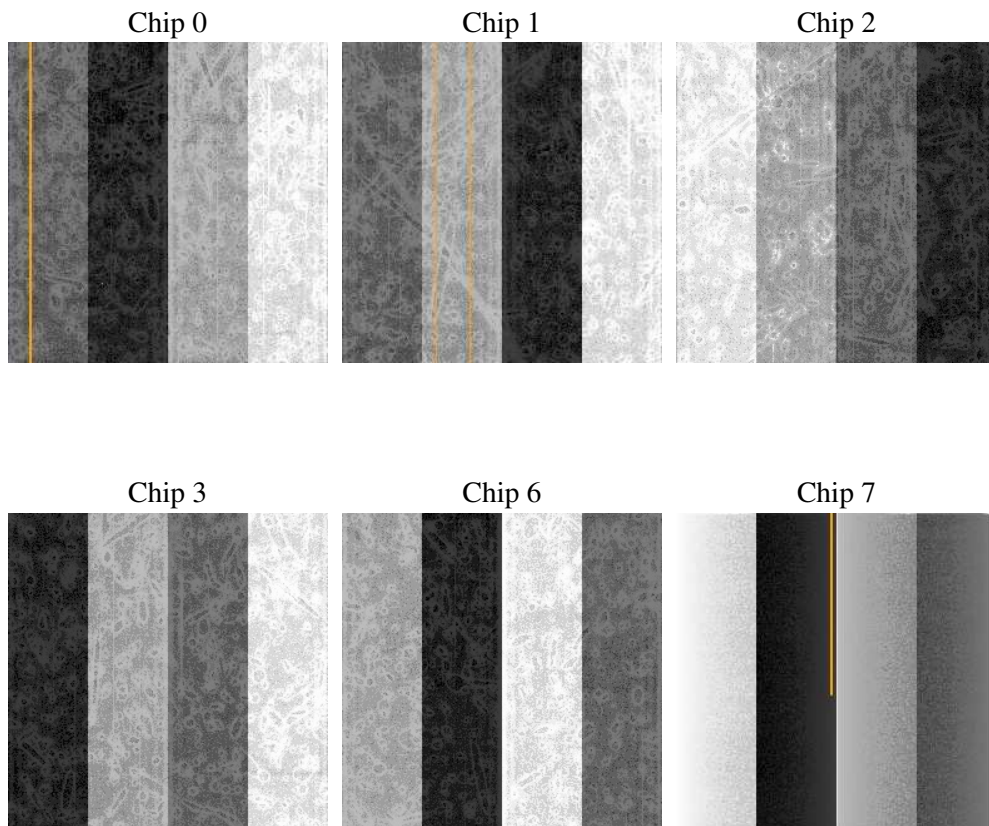
2 OBI

2.1 OBI

2.1.1 Images



2.1.2 Bias



2.1.3 Parameters

obi_num	0
ascdsver	7.6.10
caldbver	3.4.0
date	2007-06-14T11:07:07
revision	2

sched_exp_time	11760.000000
ontime	11715.200010911
ontime0	11715.200010911
ontime1	11715.200010911
ontime2	11715.200010911
ontime3	11715.200010911
ontime6	11715.200010911
ontime7	11715.200010911
l1events	519232

2.1.4 Events

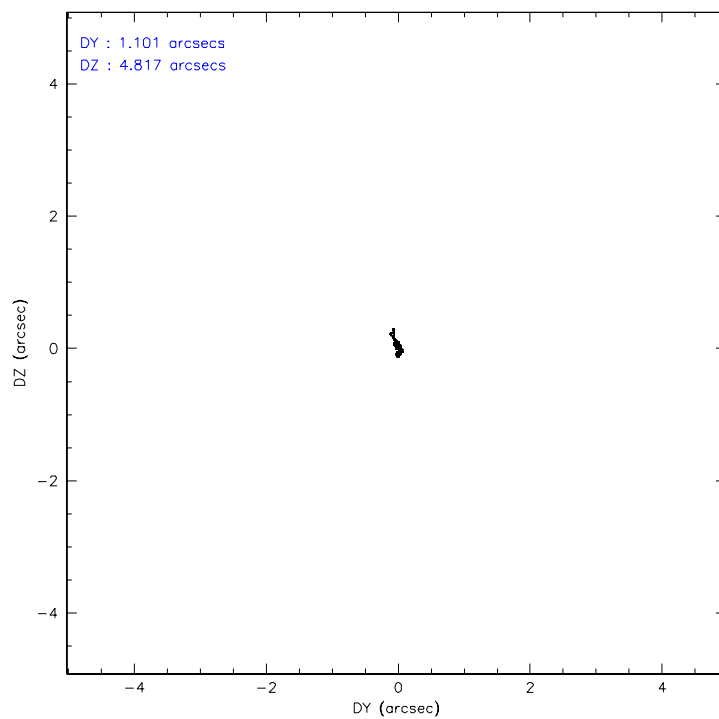
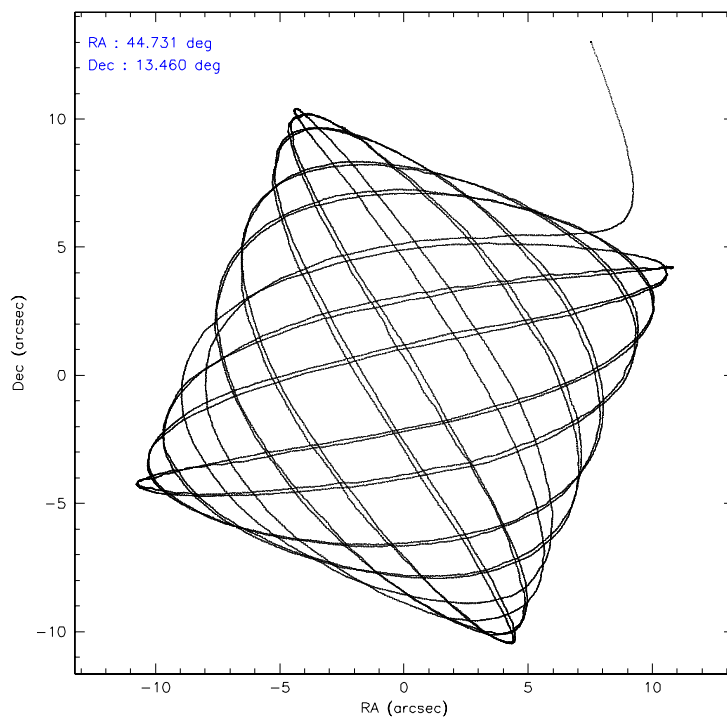
	ccd 0	ccd 1	ccd 2	ccd 3	ccd 6	ccd 7
level 1 events	70615	72815	121321	80010	82977	91494
rejected events	57578	60721	69393	65558	69080	51383
rejected %	81%	83%	57%	81%	83%	56%

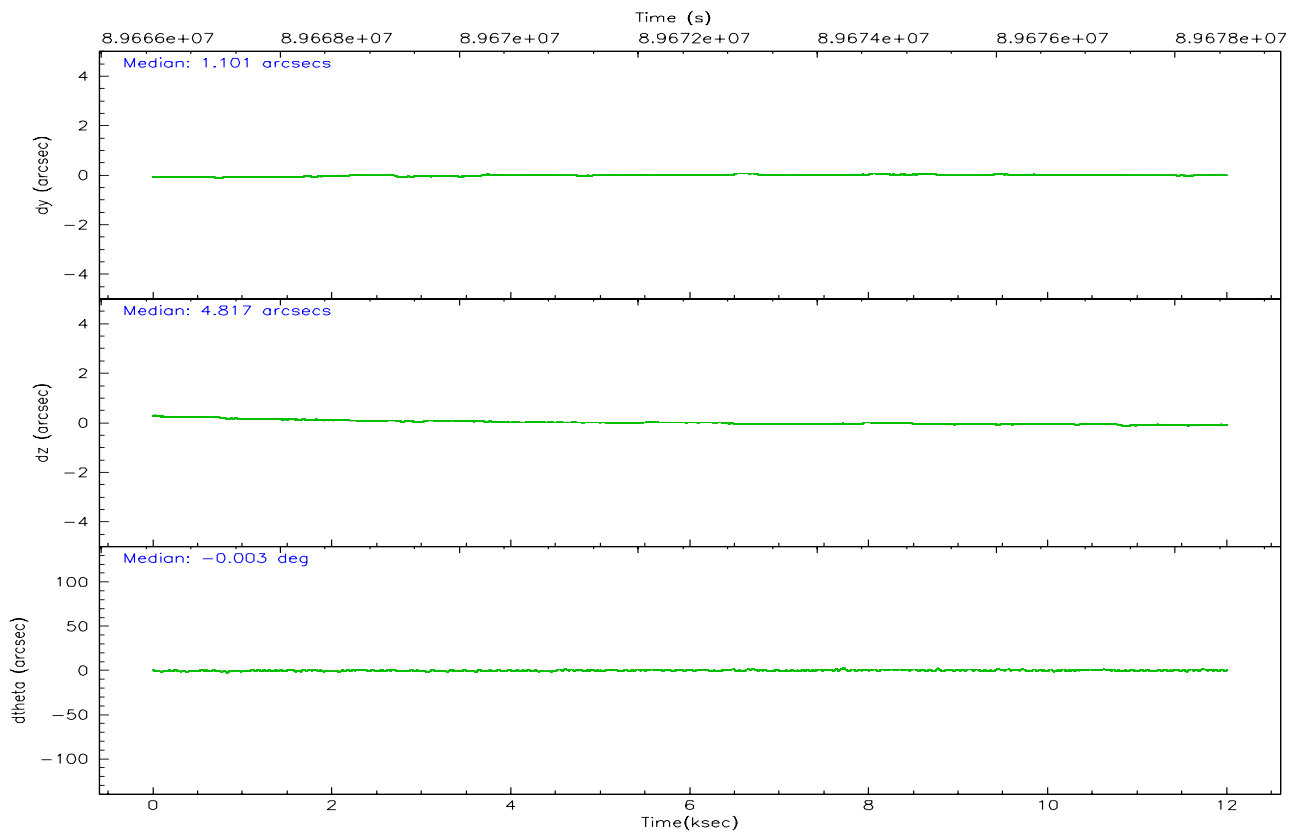
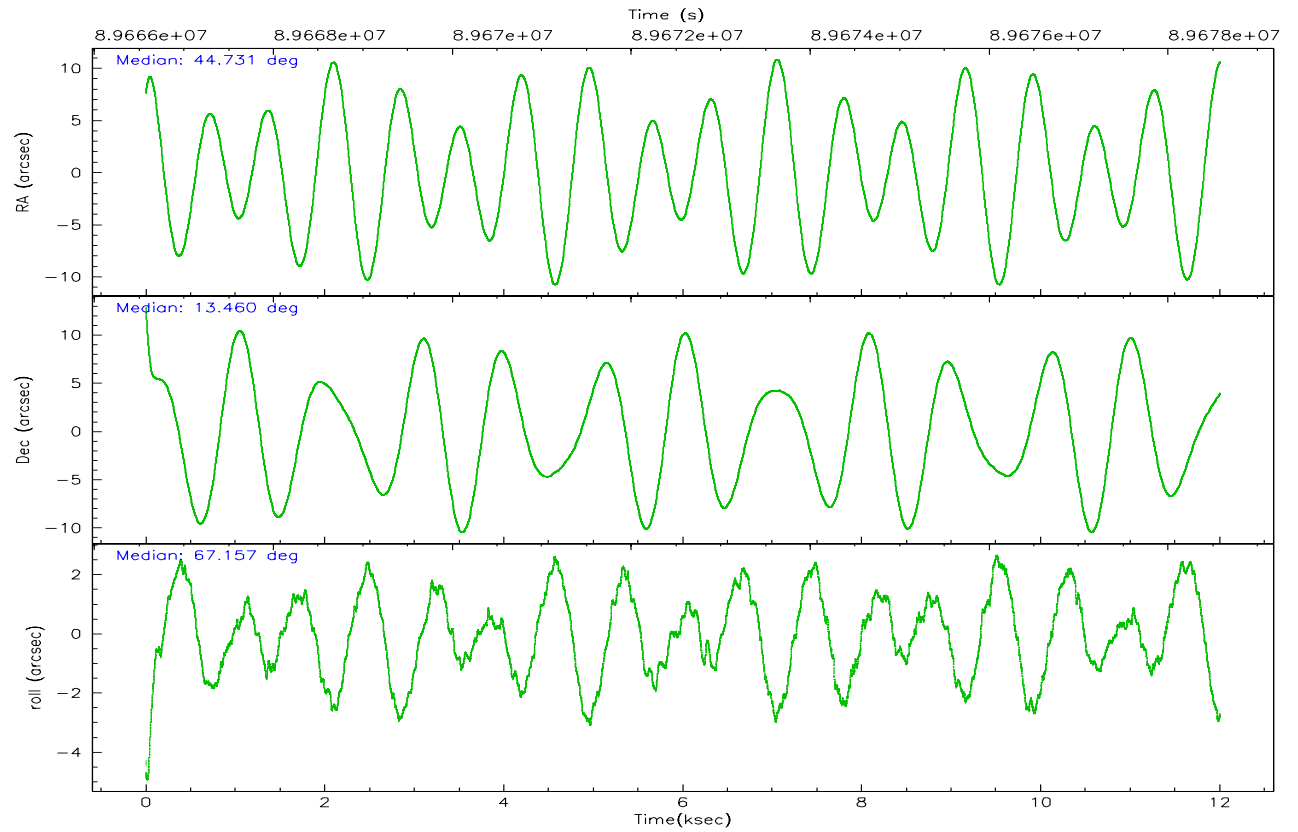
	ccd 0	ccd 1	ccd 2	ccd 3	ccd 6	ccd 7
grade 0 events	6262	5118	37663	7552	7085	4337
	8%	7%	31%	9%	8%	4%
grade 1 events	38	36	152	33	55	97
	0%	0%	0%	0%	0%	0%
grade 2 events	2857	2686	6663	2881	2761	8140
	4%	3%	5%	3%	3%	8%
grade 3 events	911	987	2174	884	964	3841
	1%	1%	1%	1%	1%	4%
grade 4 events	851	896	2290	948	863	3687
	1%	1%	1%	1%	1%	4%
grade 5 events	2291	2529	2459	2635	2929	8530
	3%	3%	2%	3%	3%	9%
grade 6 events	2159	2417	3179	2193	2228	20126
	3%	3%	2%	2%	2%	21%
grade 7 events	55246	58146	66741	62884	66092	42736
	78%	79%	55%	78%	79%	46%

2.2 Compared Parameters

Parameter	Planned	Actual	Parameter	Planned	Actual
Instrument	ACIS	ACIS	Obspar format version number	6	6
Detector	ACIS-012367	ACIS-012367	Obspar file type	PREDICTED	ACTUAL
Grating	NONE	NONE	Obspar update status	NONE	UPDATED
Data mode	FAINT	FAINT	Number of optional ACIS chips dropped	0	0
Observation mode	POINTING	POINTING	On-chip summing requested	N	N
Pointing RA	44.734532	44.73105481717774	Subarray requested	NONE	NONE
Pointing Dec	13.433170	13.46047691859338	Alternating exposures requested	N	N
Pointing Roll	66.951935	67.16143110594136	Primary exposure time	3.200000	3.2
SIM focus pos (mm)	-0.782348	-0.7809083437167272			
SIM defocus (mm)	0	0.001439871863259334			
SIM translation stage pos (mm)	-223.592463	-223.5905168218261			
SIM translation stage offset (mm)	-10	-10.00193618110356			
Observation start time	89666825.184000	89665836.634372			
Observation start date	2000-11-03T19:26:01	2000-11-03T19:10:36			
Observation end time	89678585.184000	89679159.072375			
Observation end date	2000-11-03T22:42:01	2000-11-03T22:52:39			
Read mode	TIMED	TIMED			

2.3 Aspect



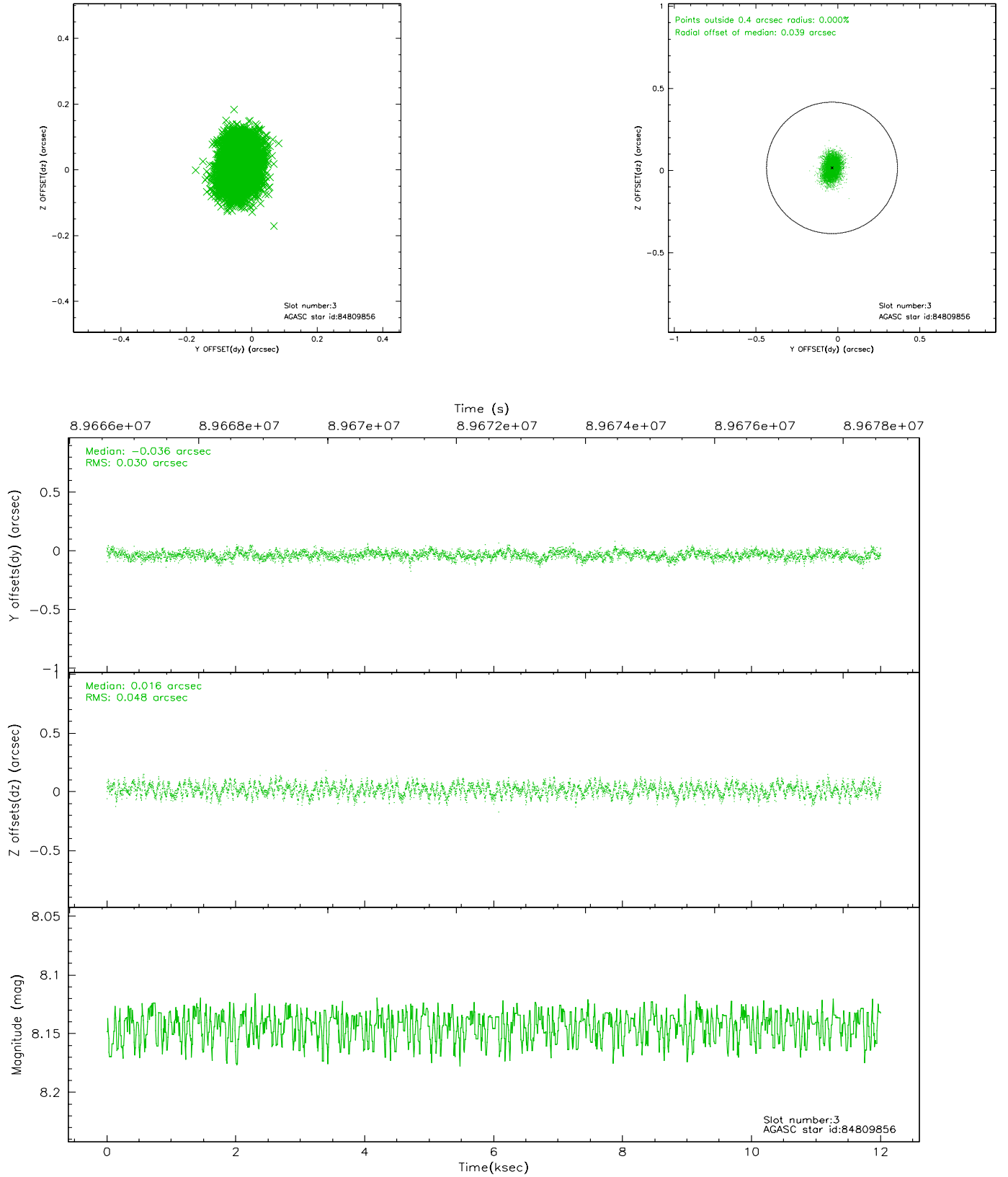


Slot Statistics

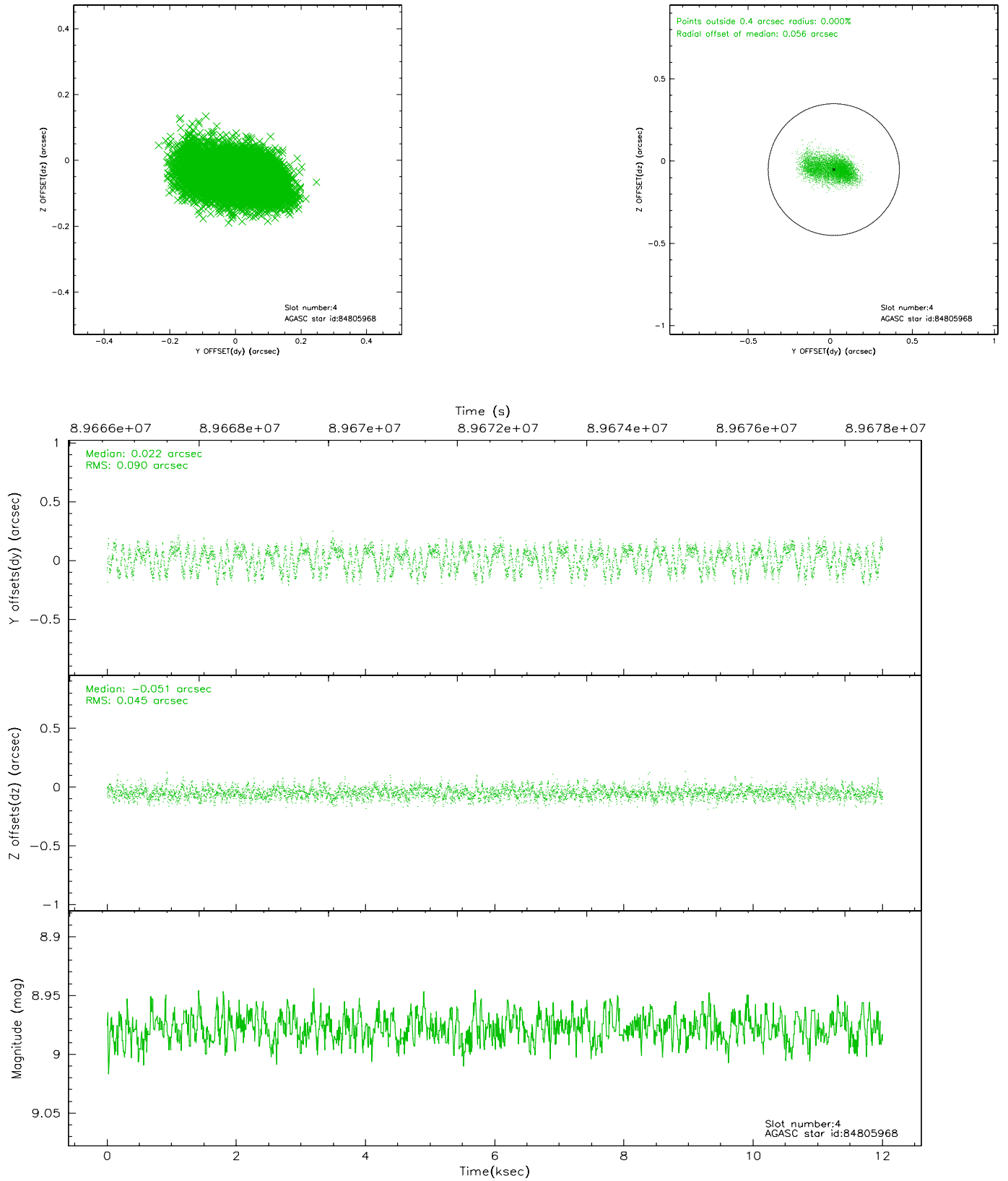
slot	status	id	mag	n_pts	med_dy	med_dz	dr1	dr2	ra	dec	mean_y	mean_z
0	FID	ACIS-I-2	7.18	2929	-0.017	-0.021	0.008	0.015	0.000000	0.000000	-756.13	-1038.59
1	FID	ACIS-I-4	7.15	2929	-0.078	0.026	0.007	0.012	0.000000	0.000000	2157.61	867.31
2	FID	ACIS-I-5	7.22	2929	-0.006	0.064	0.009	0.015	0.000000	0.000000	-1808.91	864.37
3	GUIDE	84809856	8.14	5856	-0.036	0.016	0.061	0.097	45.191960	12.984820	-855.67	-2107.41
4	GUIDE	84805968	8.98	5853	0.022	-0.051	0.106	0.177	43.904918	13.178416	-1978.46	2318.78
5	GUIDE	84808032	8.88	5857	-0.019	-0.027	0.069	0.111	44.912435	14.042740	2262.22	288.63
6	GUIDE	84808960	9.40	5856	-0.029	0.007	0.095	0.149	44.448867	14.070045	1719.86	1816.60
7	GUIDE	84805616	9.70	5784	0.077	0.054	0.086	0.139	44.861273	12.755618	-2069.75	-1363.66

2.4 Star Slots

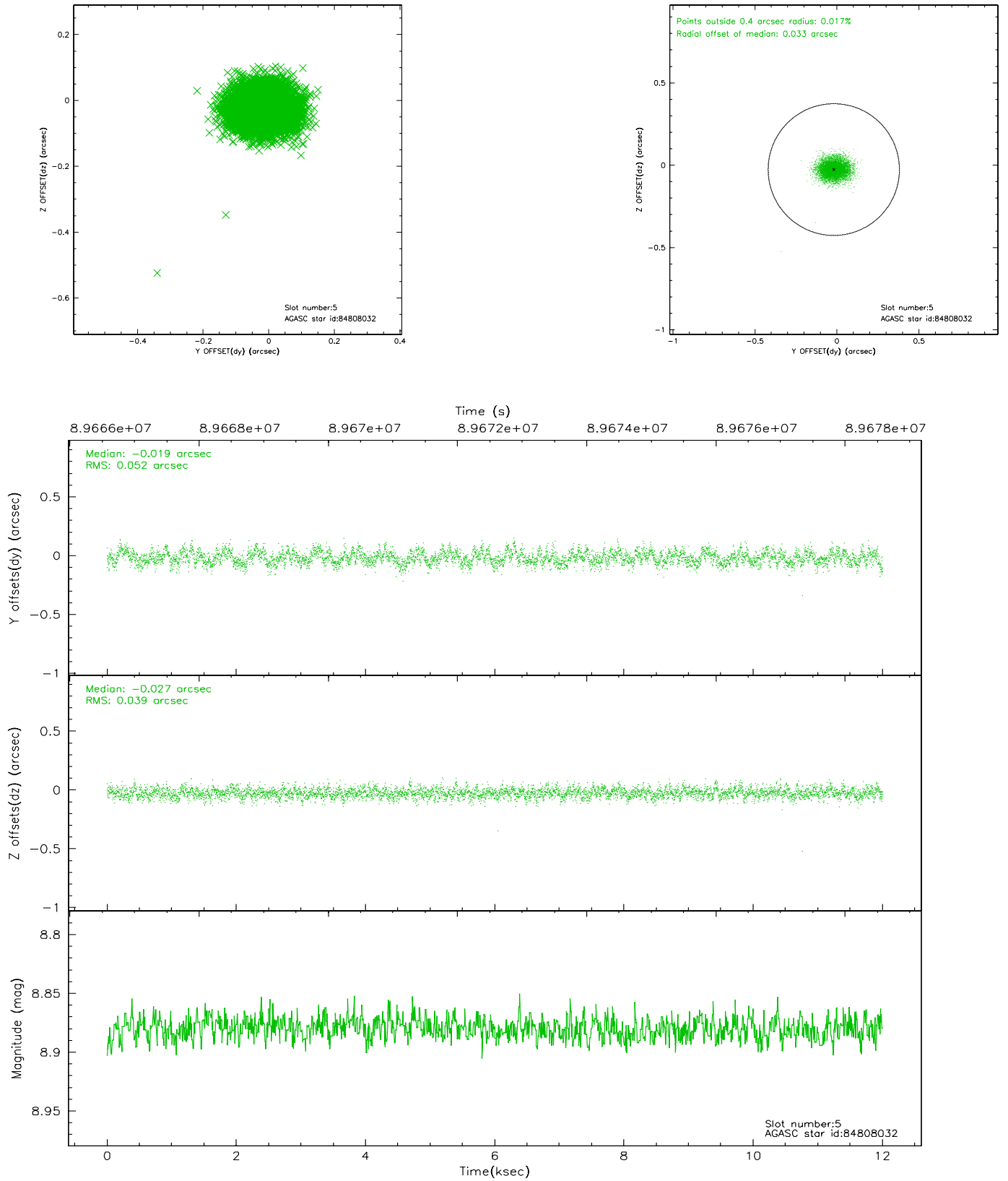
2.4.1 Slot 3



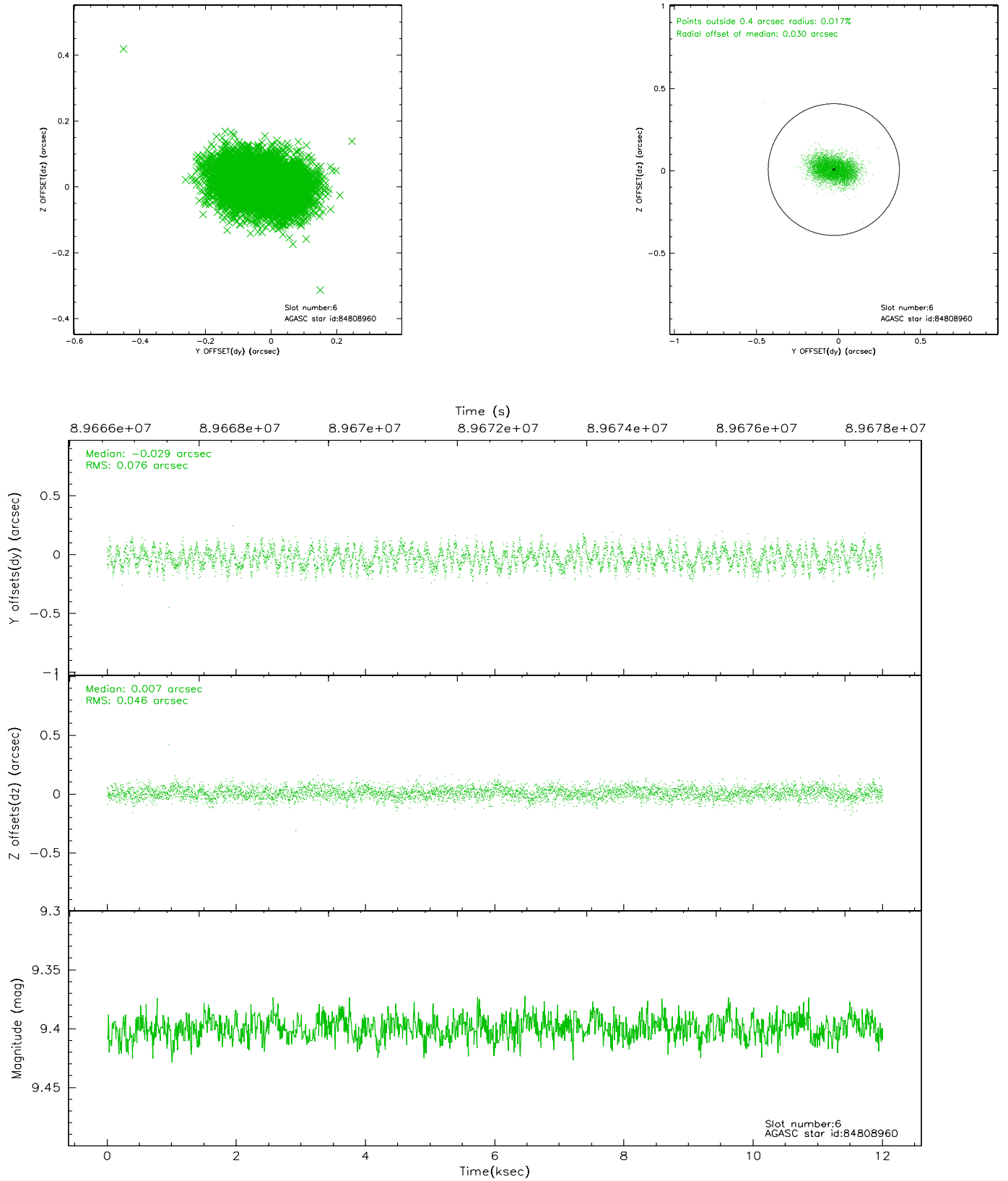
2.4.2 Slot 4



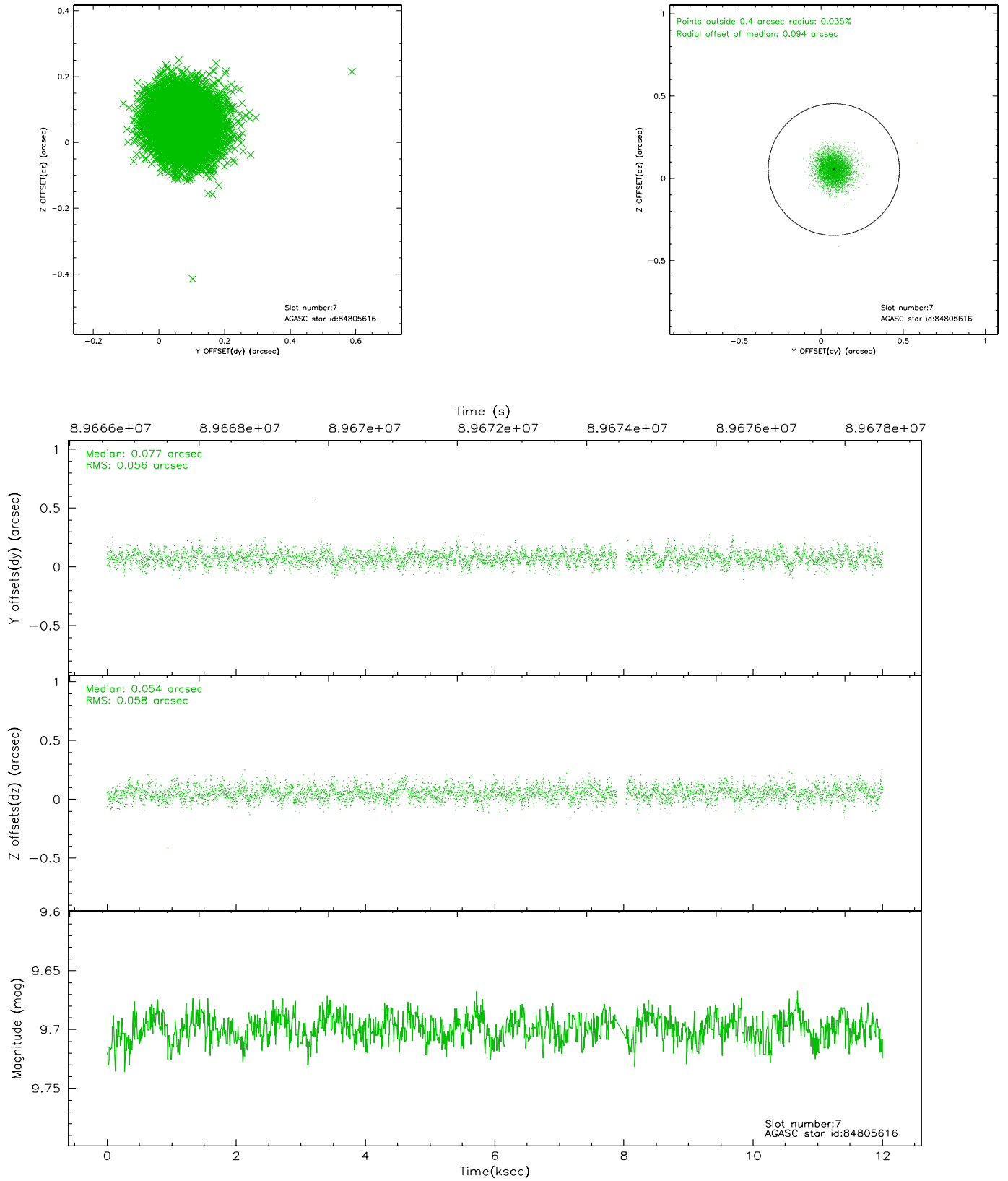
2.4.3 Slot 5



2.4.4 Slot 6

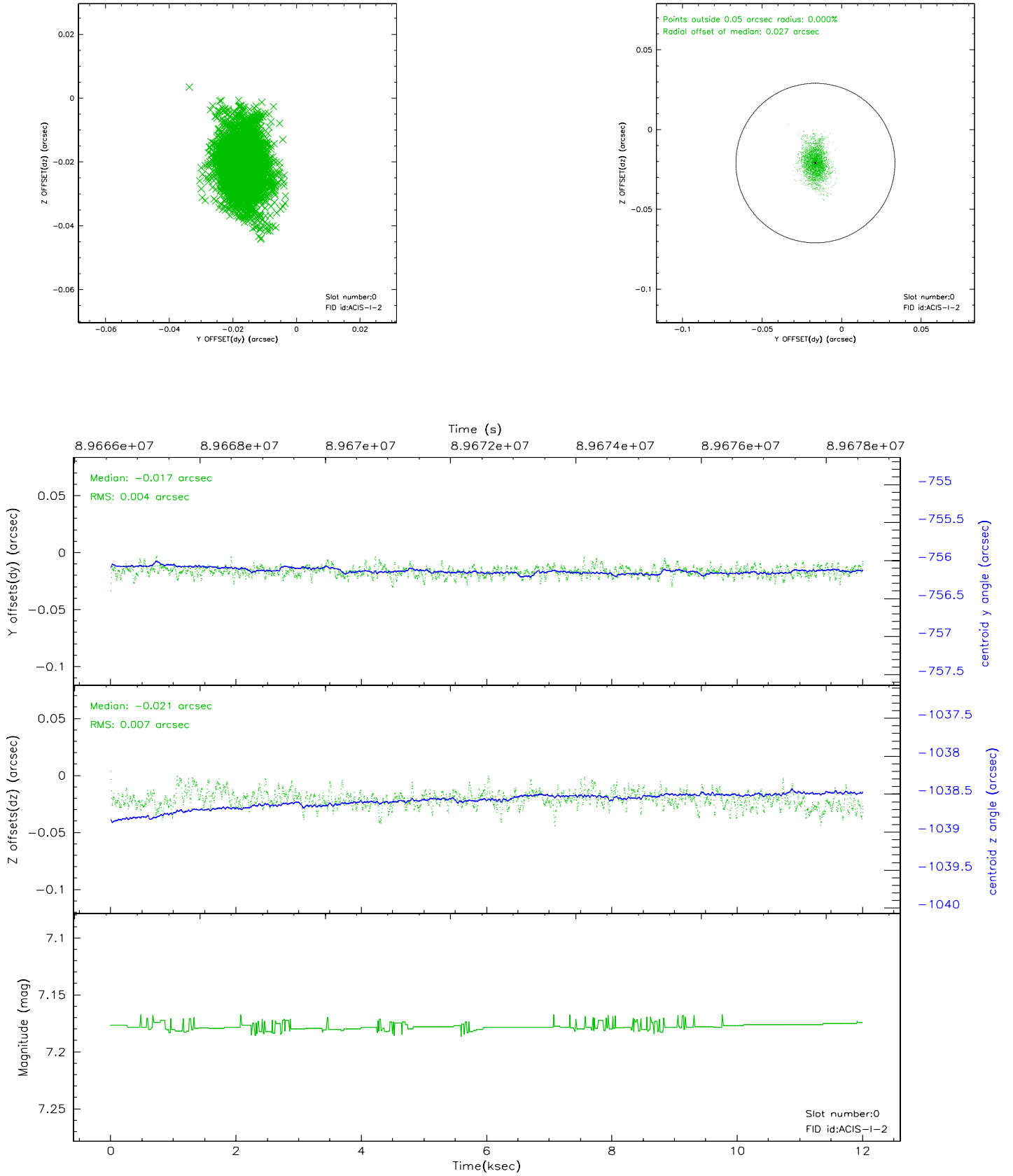


2.4.5 Slot 7

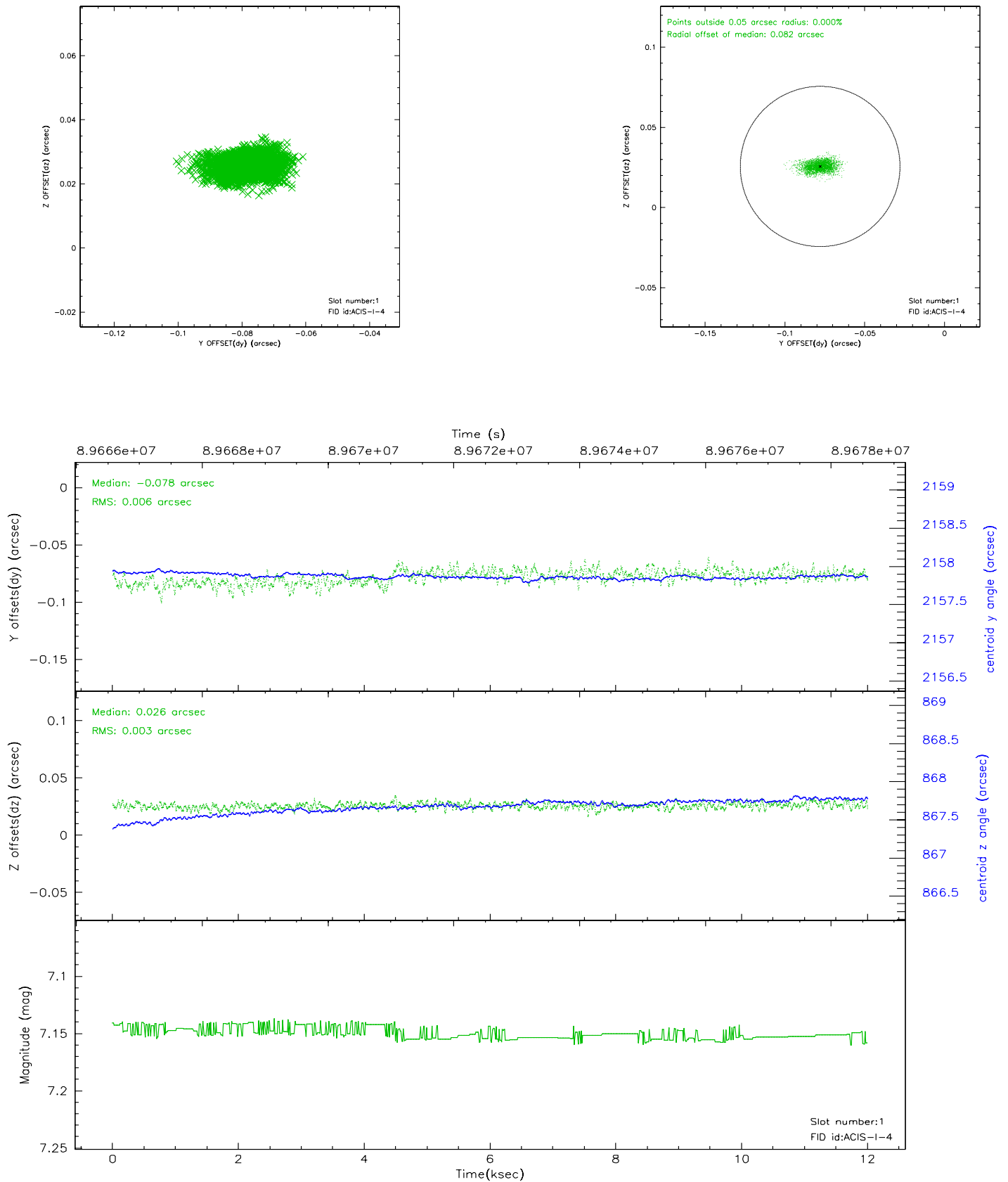


2.5 FID Slots

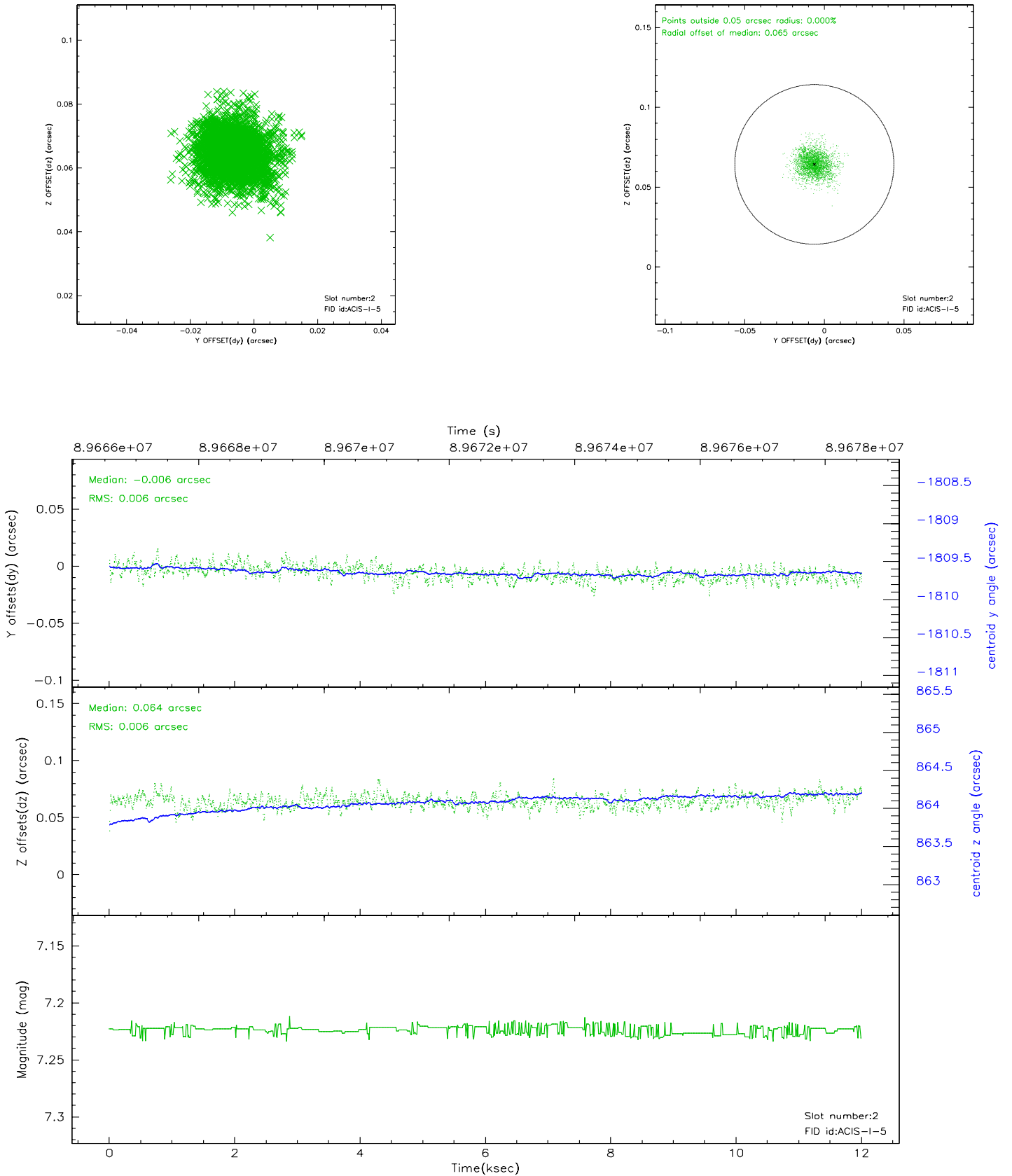
2.5.1 Slot 0



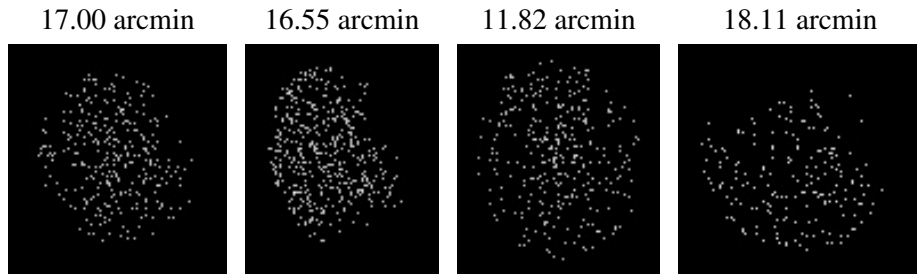
2.5.2 Slot 1



2.5.3 Slot 2



3 Point Sources



A Summary

A.1 Status

V&V Scientist	Beth Sundheim
V&V Date (YYYY-MM-DD)	2007.06.18
V&V Edition	1
V&V Disposition and Status	OK
V&V Charge Time	11.718

A.2 Comments