

# V&V Reference Report

## L2 ASCDS Version : 7.6.10

Observation 886 - L2 Version 001  
Chandra X-Ray Center

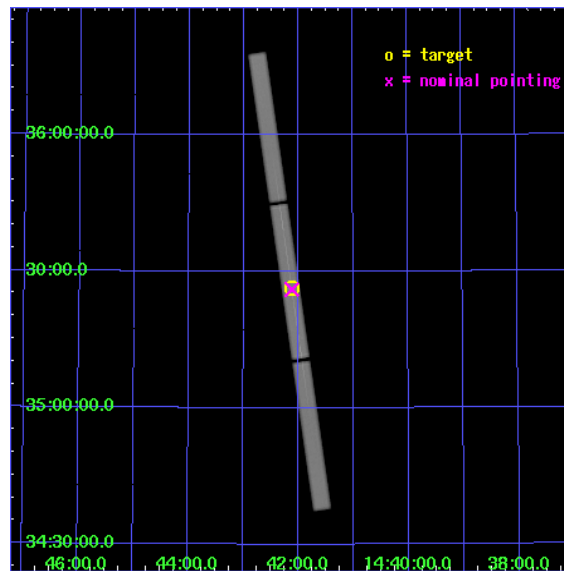
L2 Processing Date : Jun 2 2007

## Contents

<b>1</b>	<b>Front</b>	<b>2</b>
<b>2</b>	<b>OBI</b>	<b>3</b>
2.1	OBI . . . . .	3
2.1.1	Images . . . . .	3
2.1.2	Parameters . . . . .	4
2.1.3	Events . . . . .	4
2.2	Compared Parameters . . . . .	5
2.3	Aspect . . . . .	6
2.4	Star Slots . . . . .	9
2.4.1	Slot 3 . . . . .	9
2.4.2	Slot 4 . . . . .	10
2.4.3	Slot 5 . . . . .	11
2.4.4	Slot 6 . . . . .	12
2.5	FID Slots . . . . .	13
2.5.1	Slot 0 . . . . .	13
2.5.2	Slot 1 . . . . .	14
2.5.3	Slot 2 . . . . .	15
<b>3</b>	<b>Gratings</b>	<b>16</b>
3.1	LETG Arm . . . . .	16
<b>A</b>	<b>Summary</b>	<b>18</b>
A.1	Status . . . . .	18
A.2	Comments . . . . .	18

# 1 Front

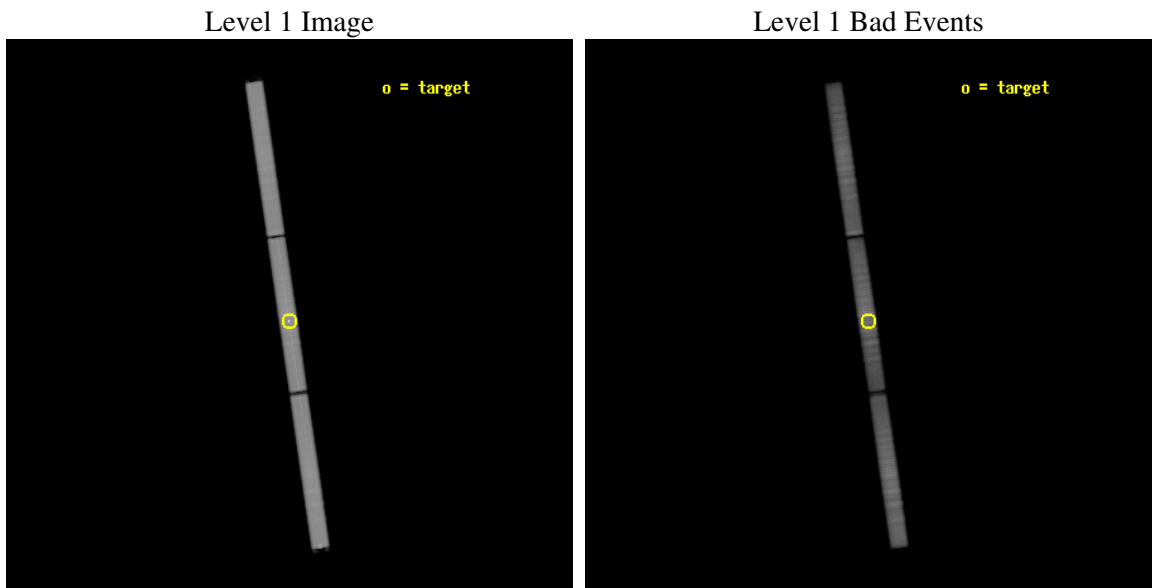
seq_num	700191
obs_id	886
title	LETG SPECTROSCOPY OF THE MKN 478: THE BRIGHTEST NARROW-LINE SEYFERT 1 IN THE SOFT X-RAY SKY
observer	Dr Rick Edelson
object	MKN 478
ra_targ	220.530833
dec_targ	35.439722
ra_nom	220.52964406867
dec_nom	35.434963620833
roll_nom	261.65761439109
revision	4
ontime	80856.103015795
livetime	80467.672492878
l2events	2704075



## 2 OBI

### 2.1 OBI

#### 2.1.1 Images



### 2.1.2 Parameters

obi_num	0
ascdsver	7.6.10
caldbver	3.4.0
date	2007-06-02T09:36:40
revision	4

sched_exp_time	80000.000000
ontime	80856.103016794
l1events	4281073

### 2.1.3 Events

Level 1 Events

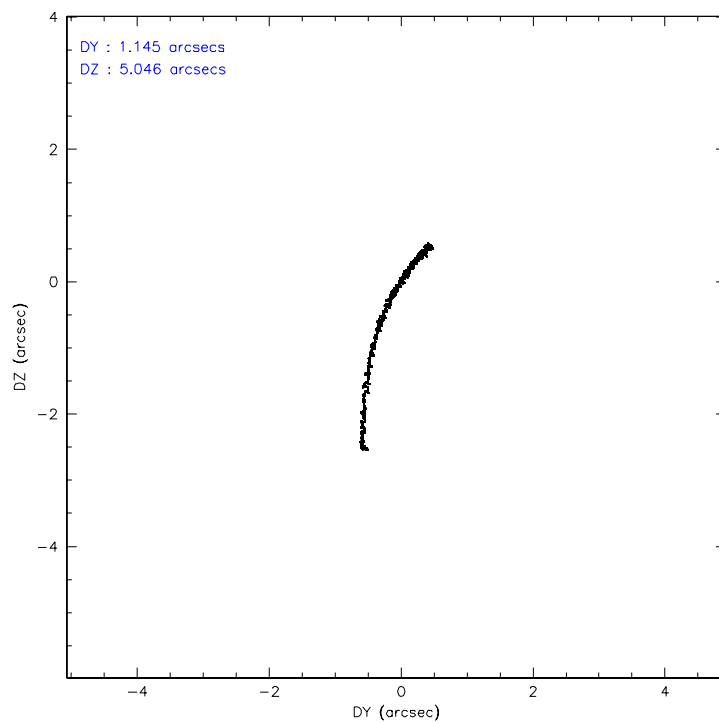
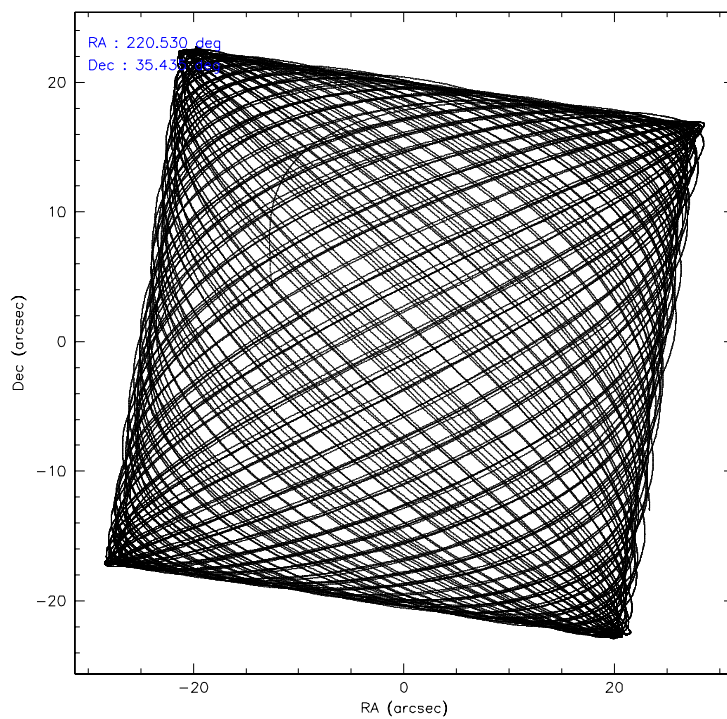
	<b>segment 1</b>	<b>segment 2</b>	<b>segment 3</b>
level 1 events	1411394	1437063	1432616
rejected events	359496	382088	434391
rejected %	25%	26%	30%

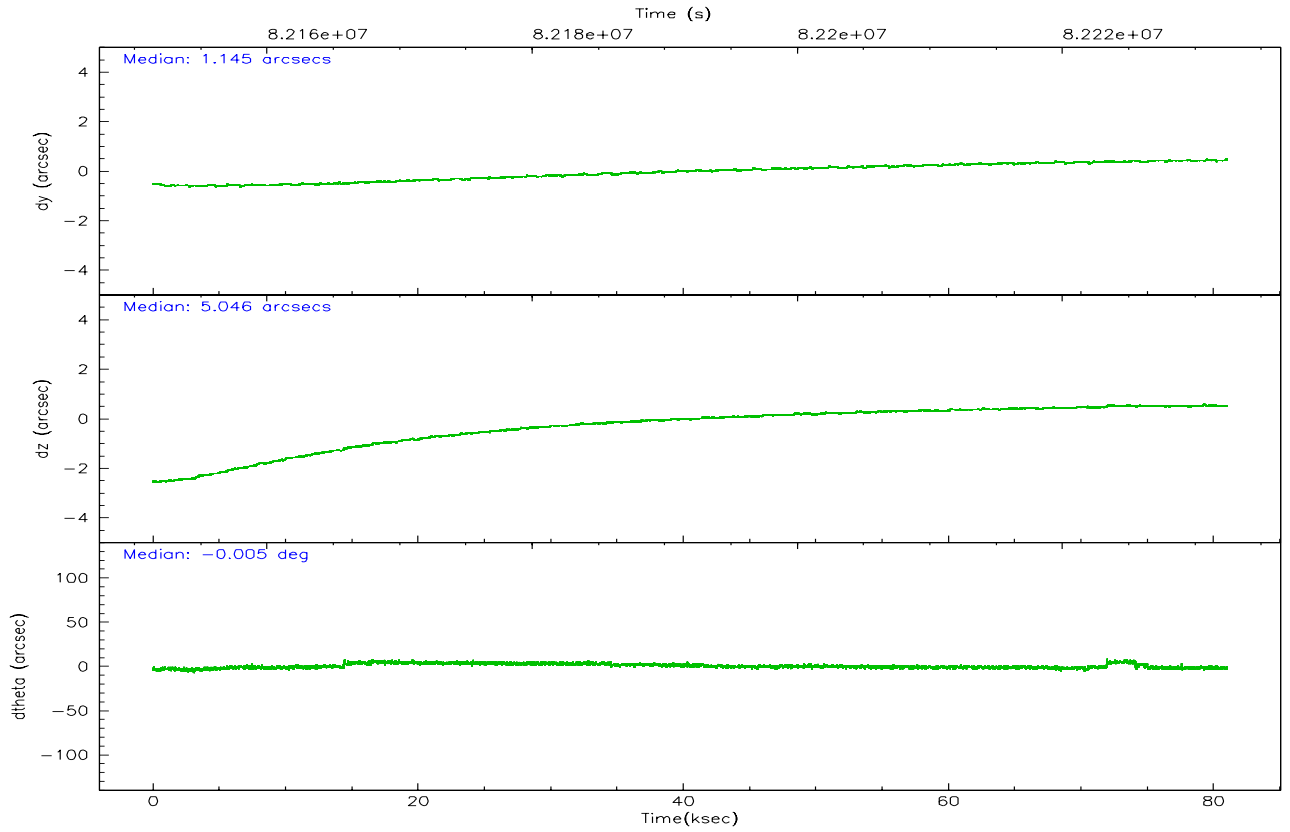
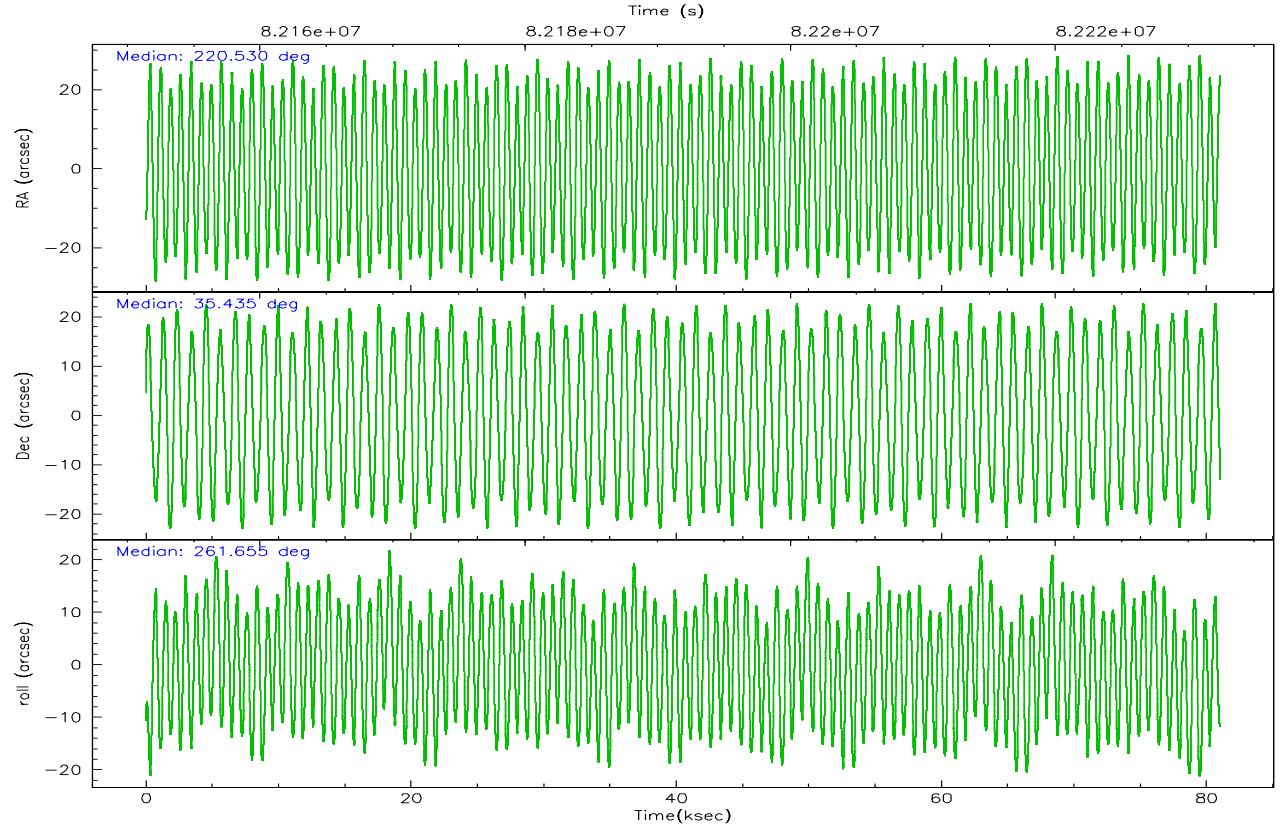


## 2.2 Compared Parameters

Parameter	Planned	Actual	Parameter	Planned	Actual
Instrument	HRC	HRC	Obspar format version number	6	6
Detector	HRC-S	HRC-S	Obspar file type	PREDICTED	ACTUAL
Grating	LETG	LETG	Obspar update status	NONE	UPDATED
Data mode	OBSERVING	OBSERVING			
Observation mode	POINTING	POINTING			
Pointing RA	220.515277	220.5296440686725			
Pointing Dec	35.461145	35.43496362083292			
Pointing Roll	261.598646	261.657614391092			
SIM focus pos (mm)	-1.429586	-1.428180813131781			
SIM defocus (mm)	0.1037507710433287	0.1051558262725154			
SIM translation stage pos (mm)	250.455976	250.466033080201			
SIM translation stage offset (mm)	0	-0.01005468664627074			
Observation start time	82151490.184000	82150368.251535			
Observation start date	2000-08-08T19:50:26	2000-08-08T19:32:48			
Observation end time	82231490.184000	82232739.304608			
Observation end date	2000-08-09T18:03:46	2000-08-09T18:25:39			

## 2.3 Aspect



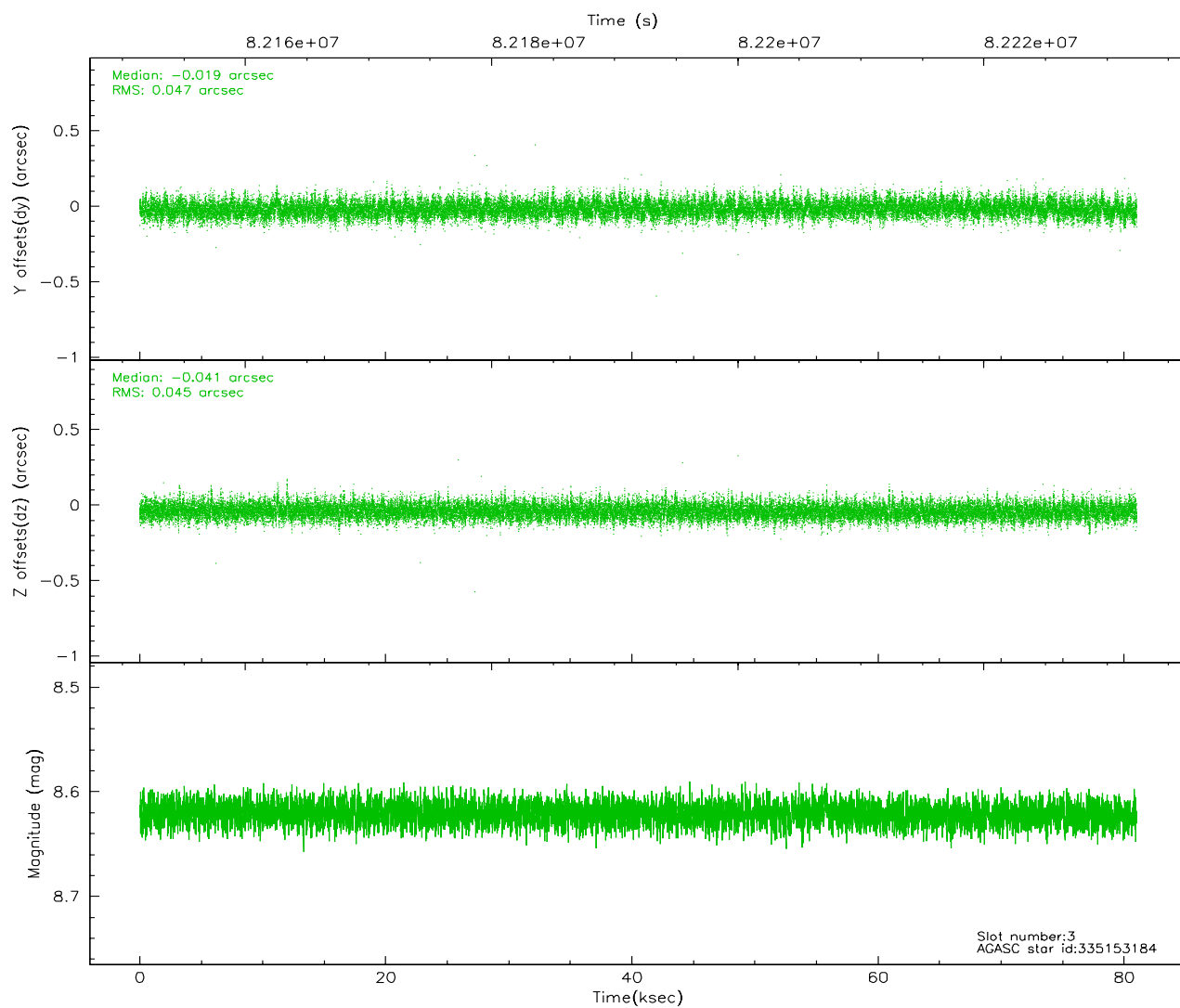
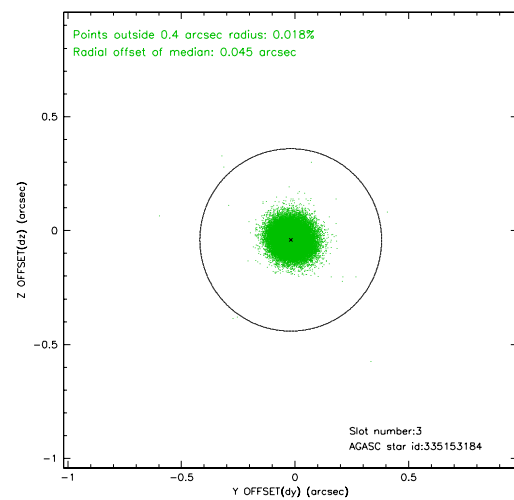
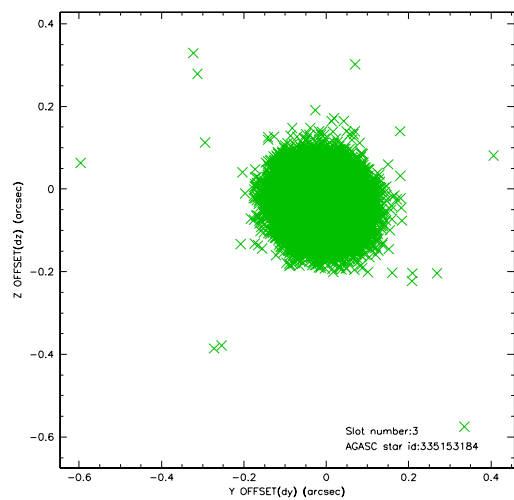


Slot Statistics

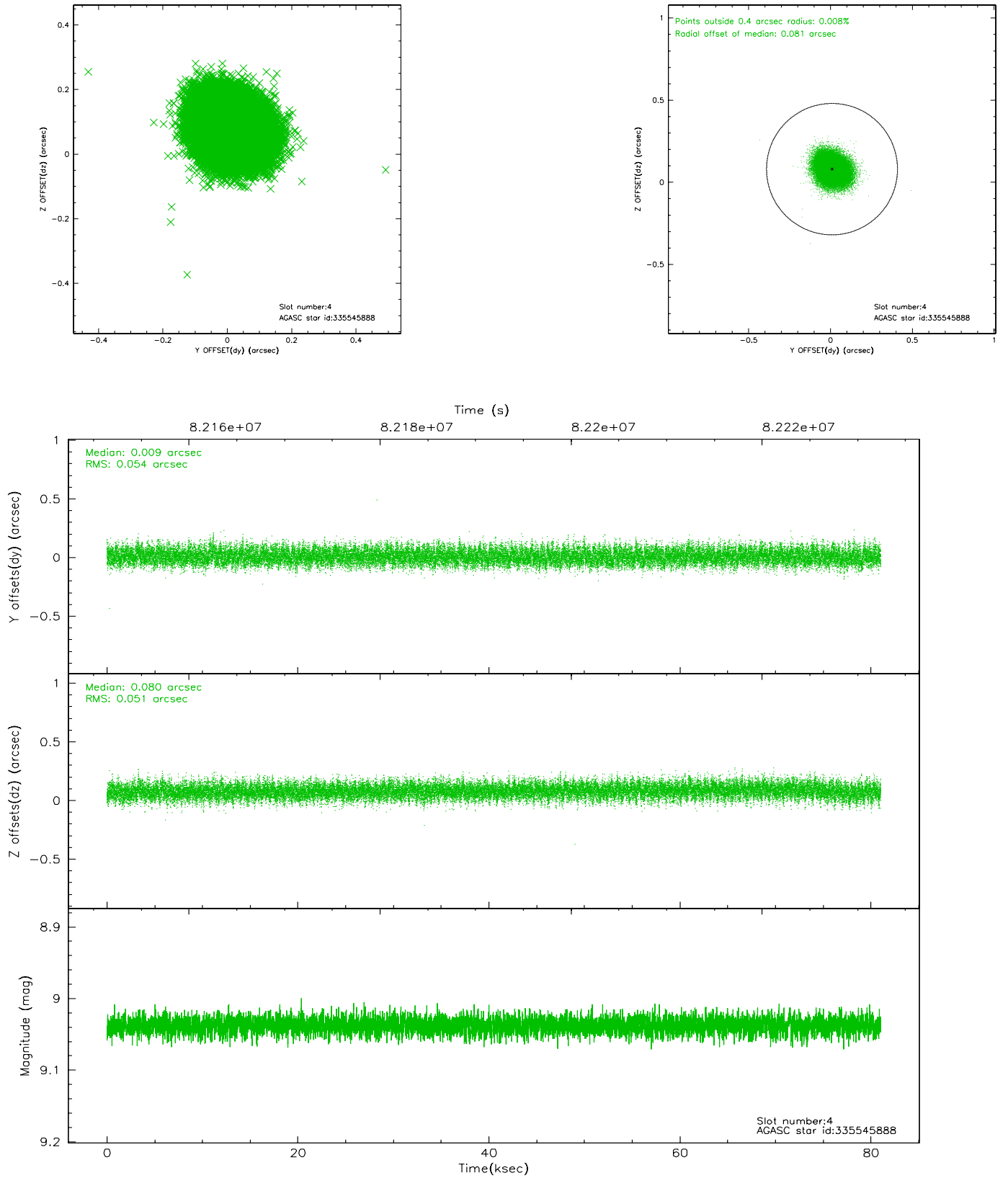
	status	id	mag	n_pts	med_dy	med_dz	dr1	dr2
	FID	HRC-S-1	6.98	19763	0.114	-0.153	0.020	0.073
	FID	HRC-S-3	7.01	19764	0.193	-0.051	0.015	0.076
	FID	HRC-S-4	6.94	19763	0.077	-0.093	0.015	0.025
	GUIDE	335153184	8.62	39523	-0.019	-0.041	0.068	0.113
	GUIDE	335545888	9.04	39521	0.009	0.080	0.080	0.127
	GUIDE	335153312	9.33	39471	0.131	0.024	0.091	0.144
	GUIDE	335550024	9.57	39502	-0.122	-0.065	0.104	0.175
0.000	0.000	0.000	0.000000	0.000000	0.00	0.00		

## 2.4 Star Slots

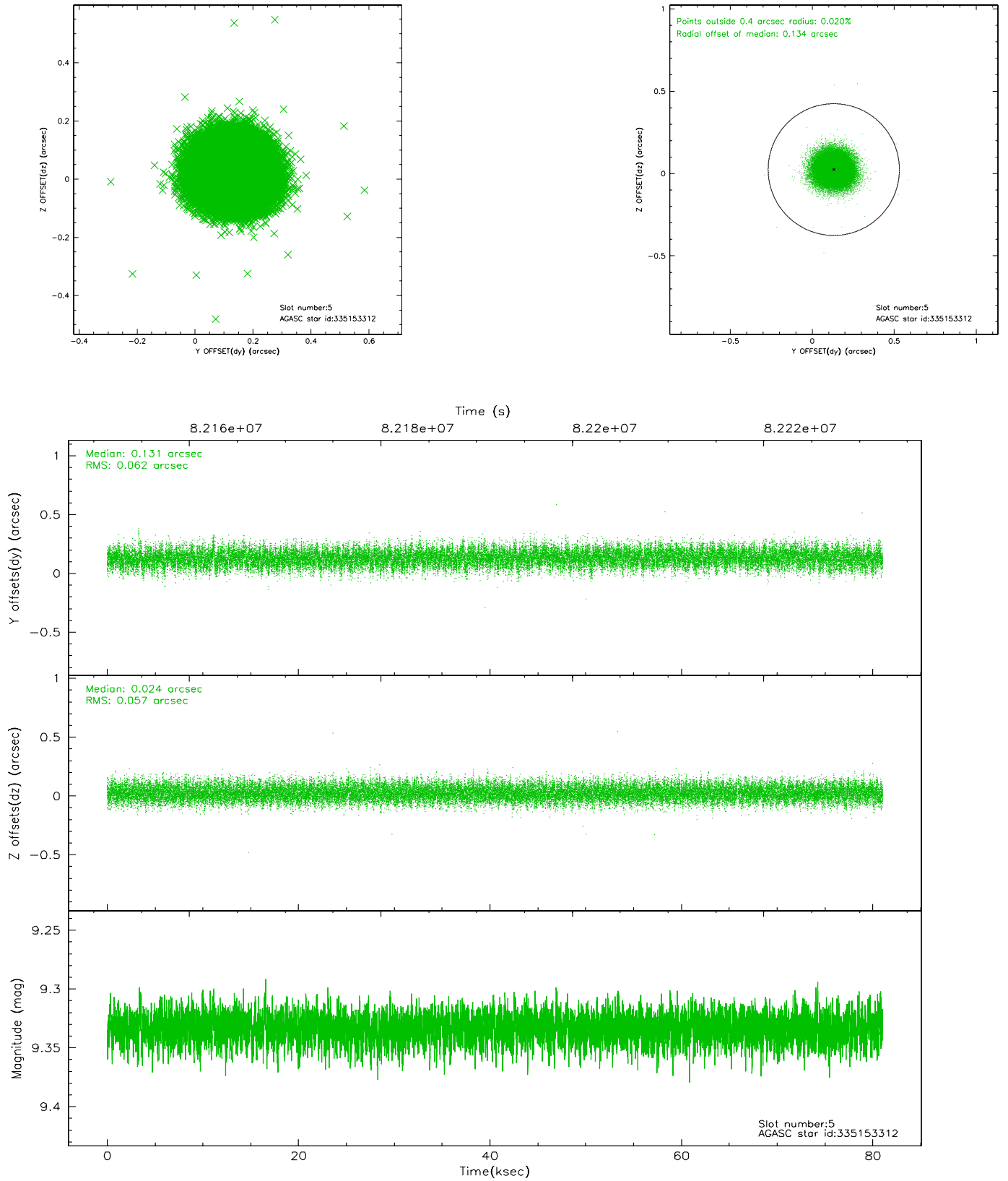
### 2.4.1 Slot 3



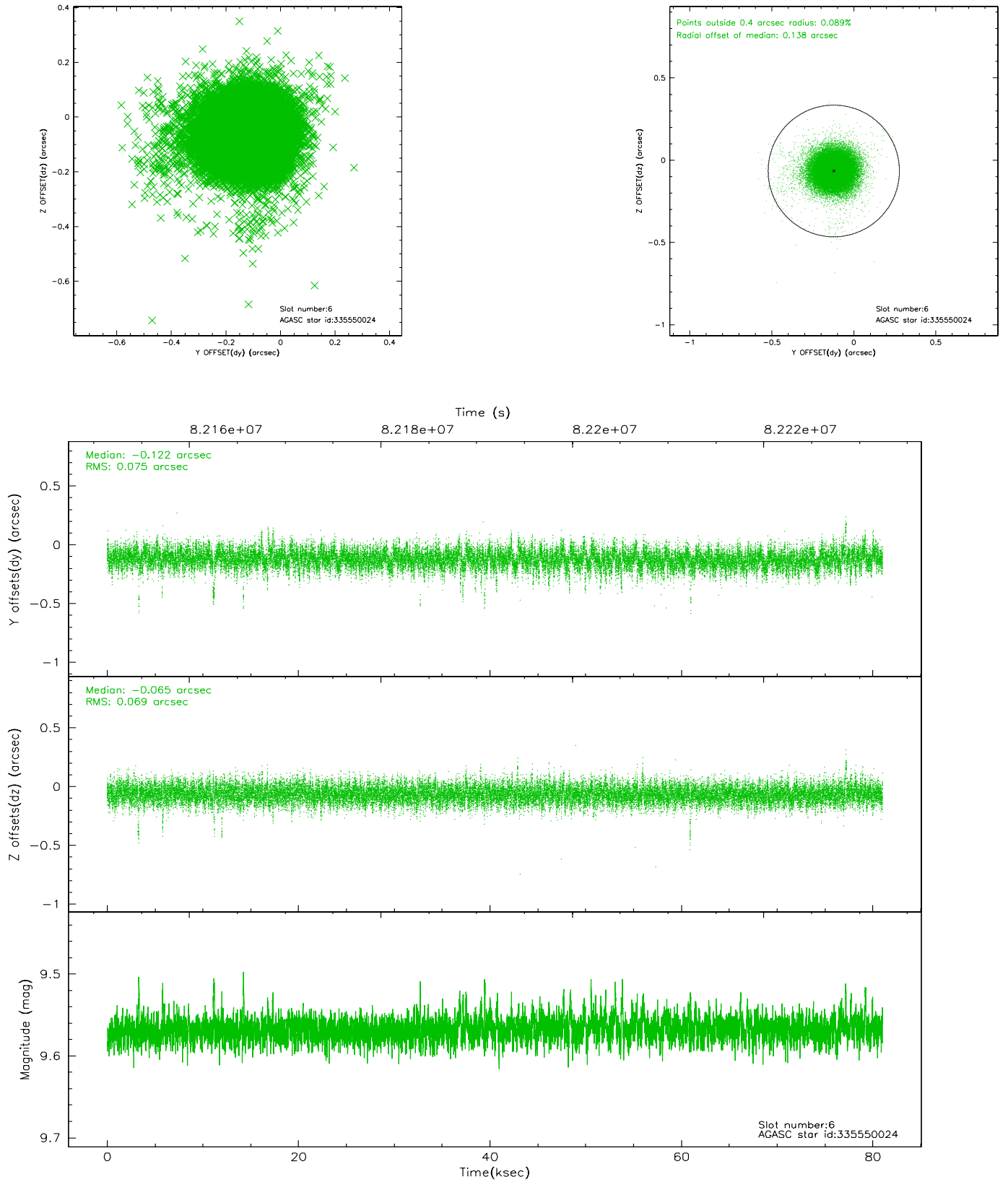
## 2.4.2 Slot 4



### 2.4.3 Slot 5



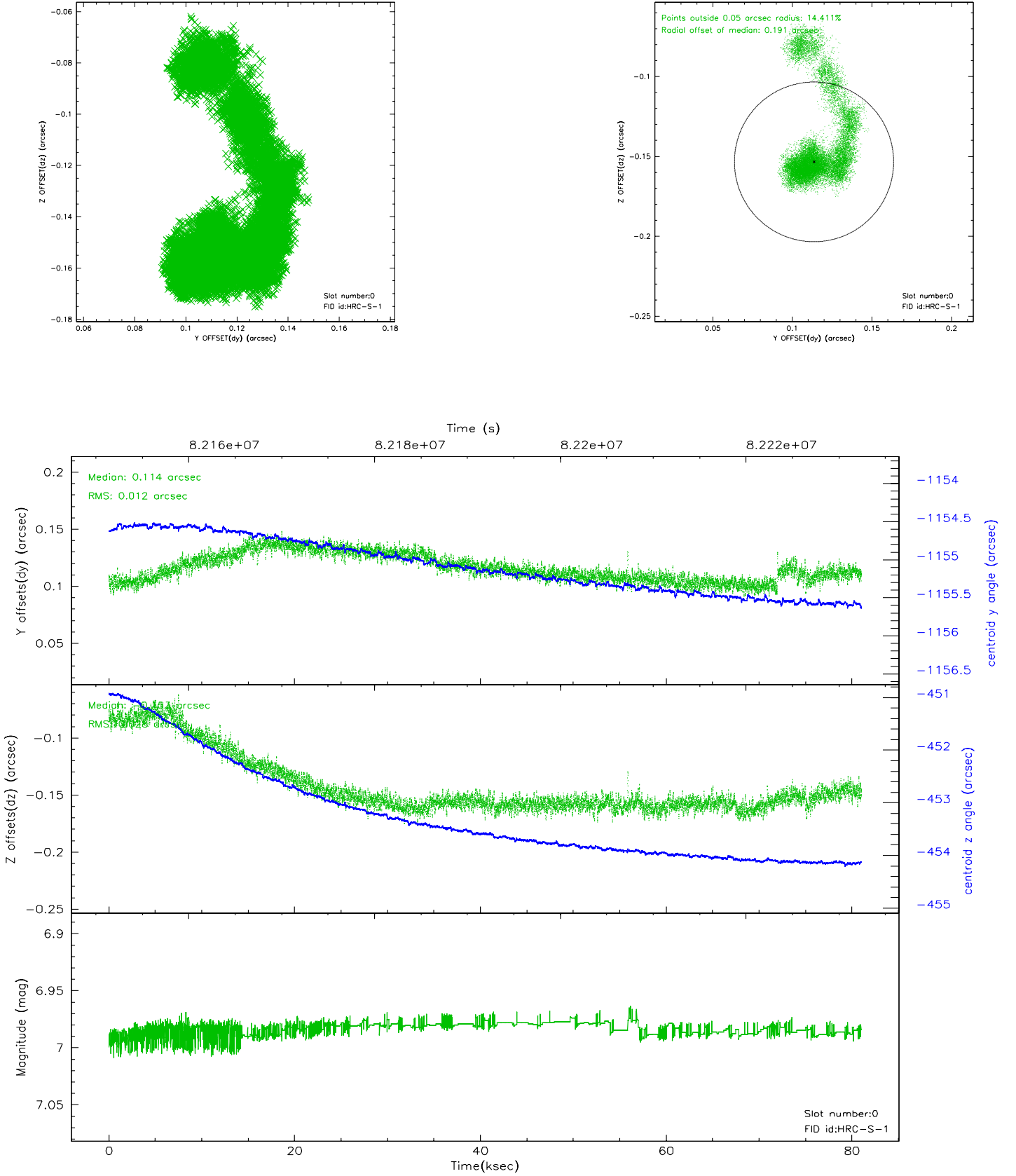
## 2.4.4 Slot 6



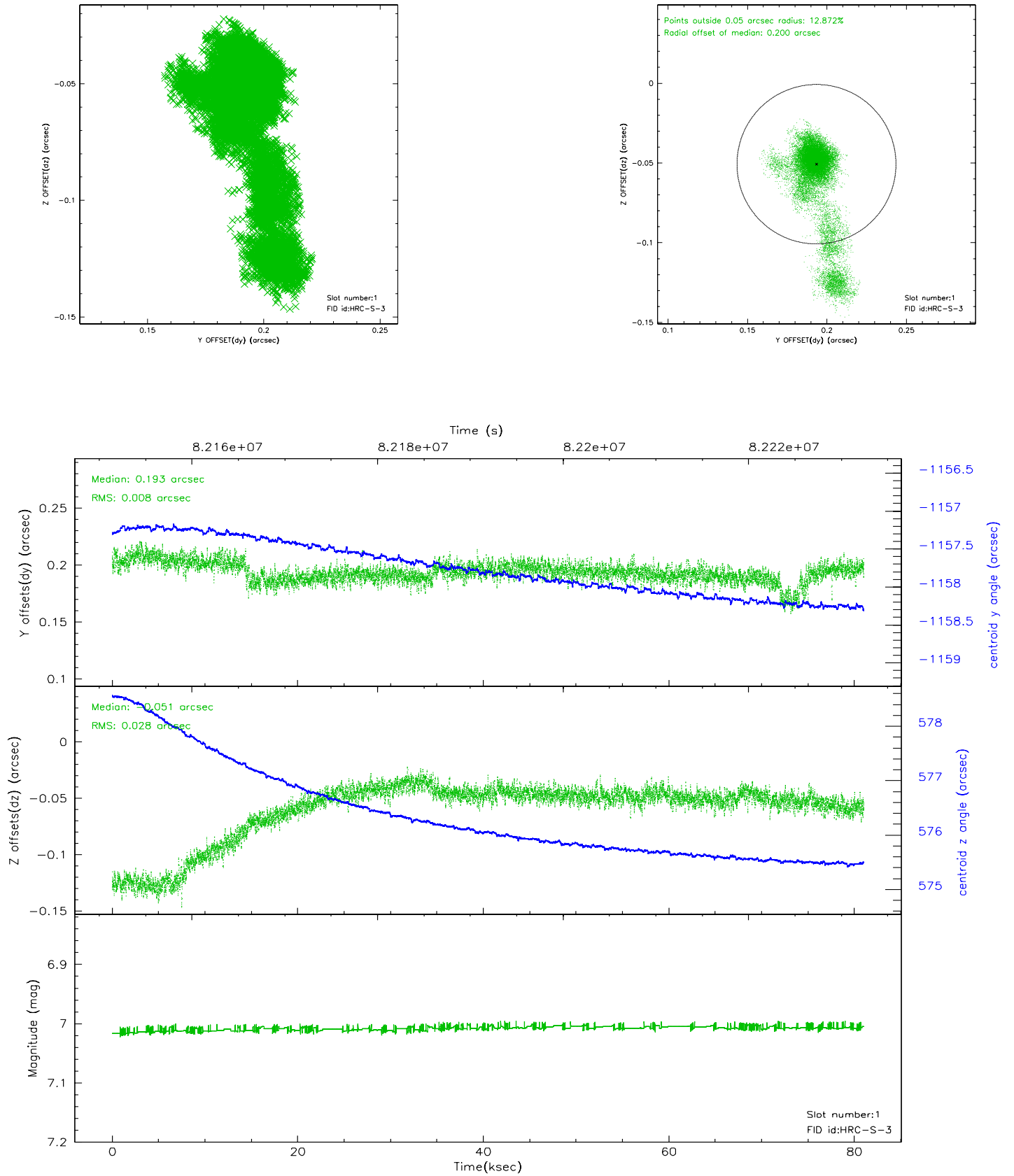


## 2.5 FID Slots

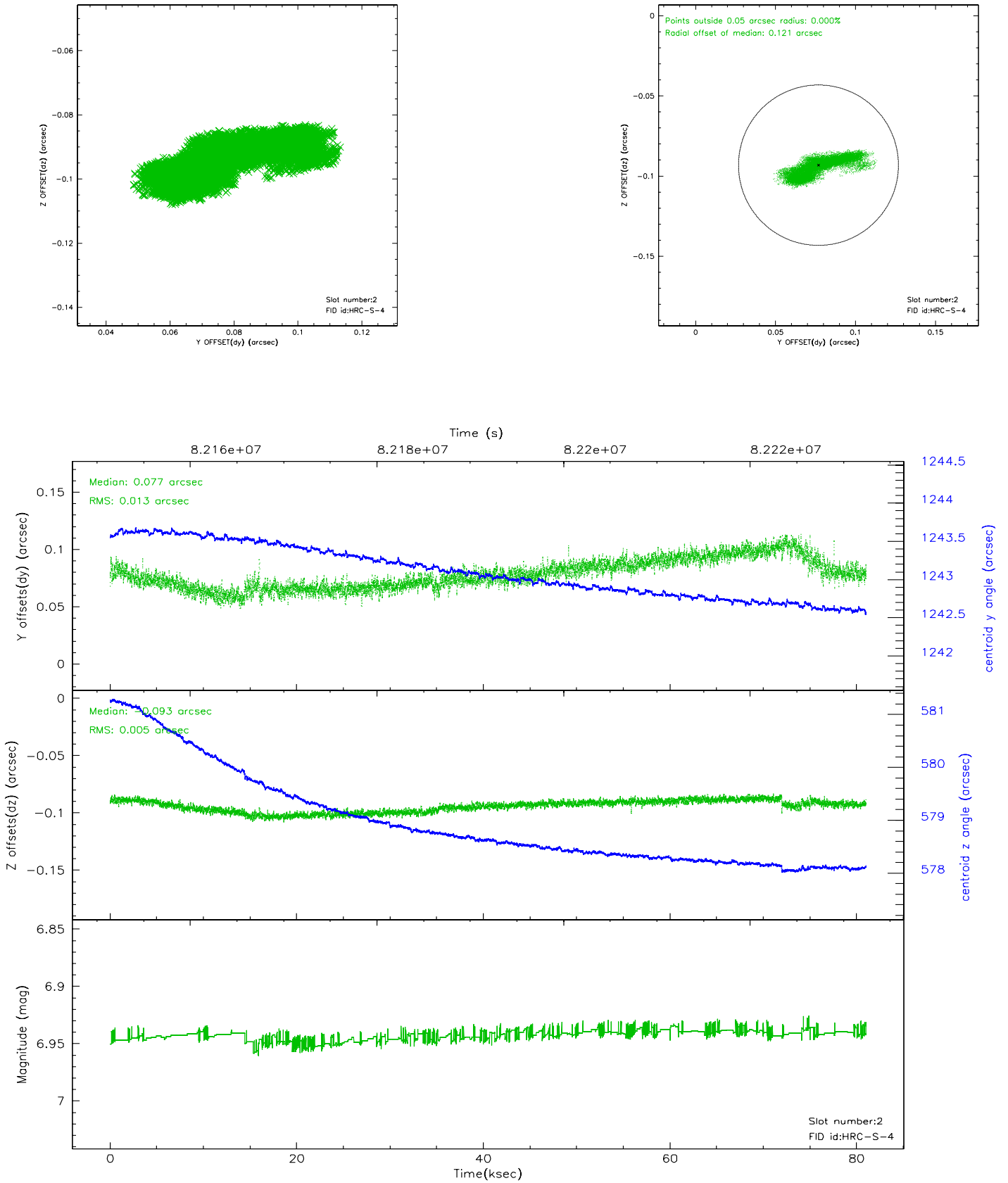
### 2.5.1 Slot 0



## 2.5.2 Slot 1

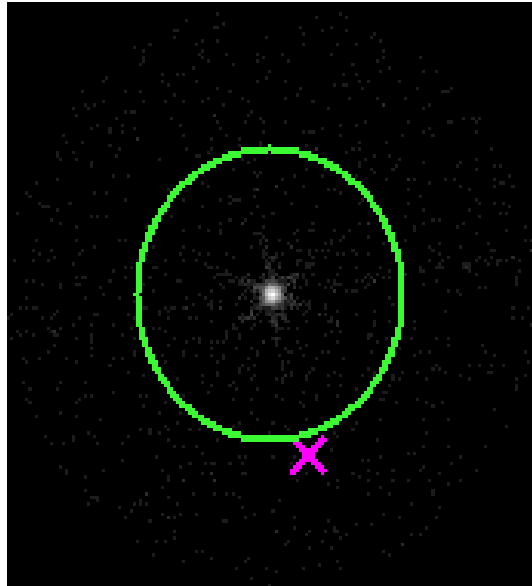


### 2.5.3 Slot 2



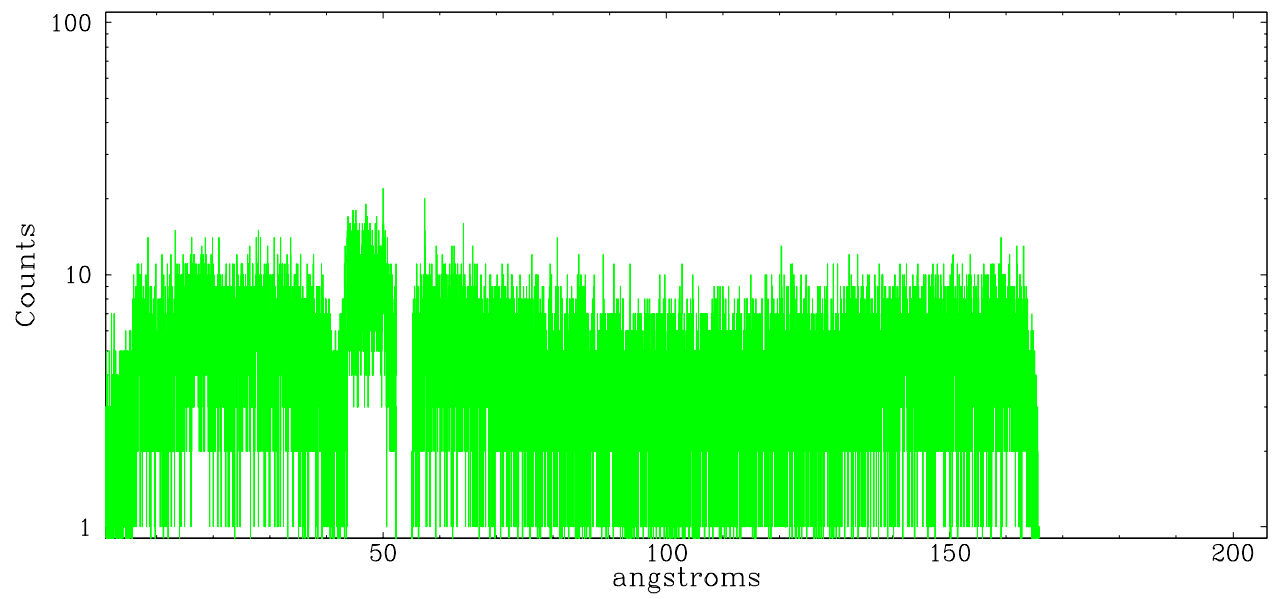
## 3 Gratings

### 3.1 LETG Arm

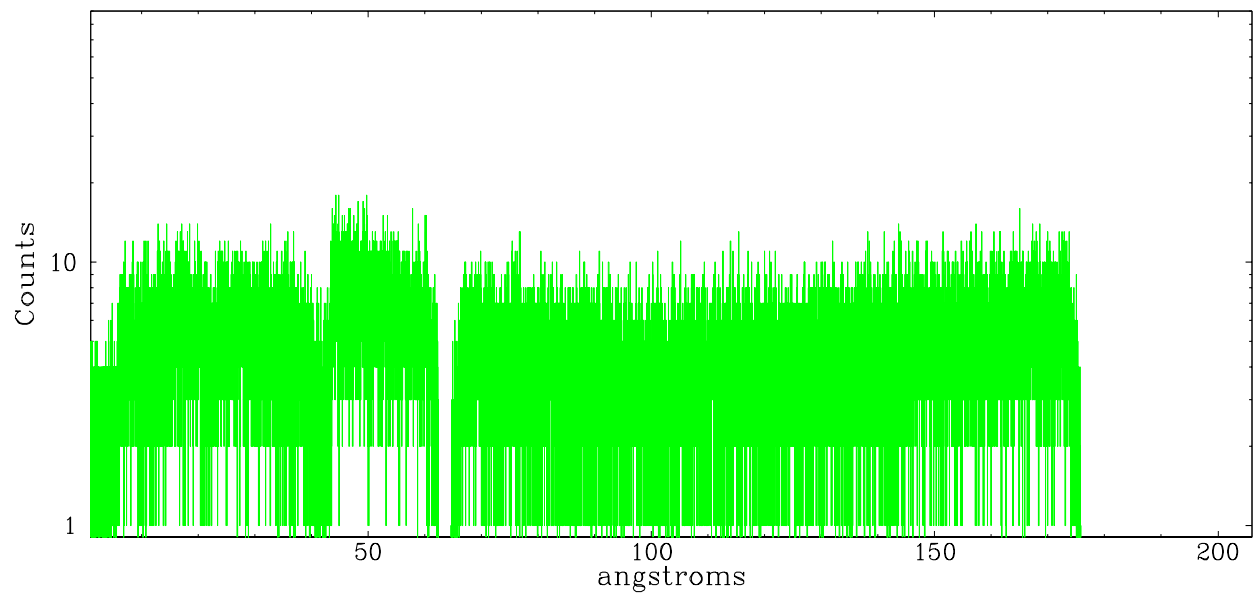


LETG Zero Order

leg order -1



leg order +1



# A Summary

## A.1 Status

V&V Scientist	Joy Nichols
V&V Date (YYYY-MM-DD)	2007.06.12
V&V Edition	1
V&V Disposition and Status	OK
V&V Charge Time	80.829

## A.2 Comments

Guide star slot 7 used for optical photometric monitoring of the source.