

V&V Reference Report

L2 ASCDS Version : 8.4.5

Observation 851 - L2 Version 4
Chandra X-Ray Center

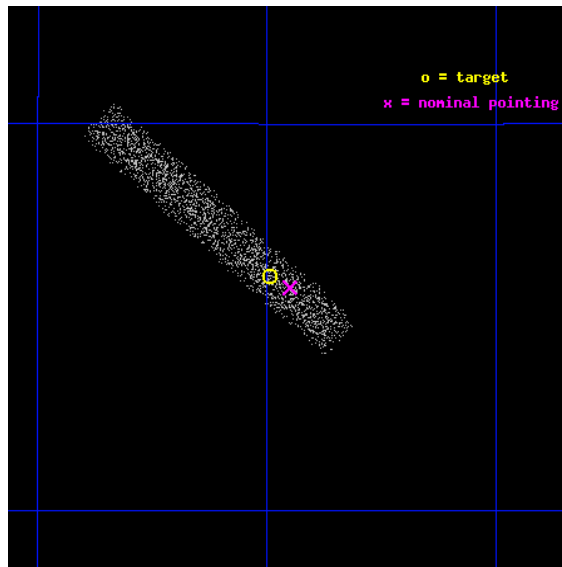
L2 Processing Date : Aug 25 2012

Contents

1	Front	2
2	OBI	3
2.1	OBI	3
2.1.1	Images	3
2.1.2	Bias	3
2.1.3	Parameters	4
2.1.4	Events	4
2.2	Compared Parameters	5
2.3	Aspect	6
2.4	Star Slots	9
2.4.1	Slot 3	9
2.4.2	Slot 4	10
2.4.3	Slot 5	11
2.4.4	Slot 6	12
2.4.5	Slot 7	13
2.5	FID Slots	14
2.5.1	Slot 0	14
2.5.2	Slot 1	15
2.5.3	Slot 2	16
A	Summary	17
A.1	Status	17
A.2	Comments	17

1 Front

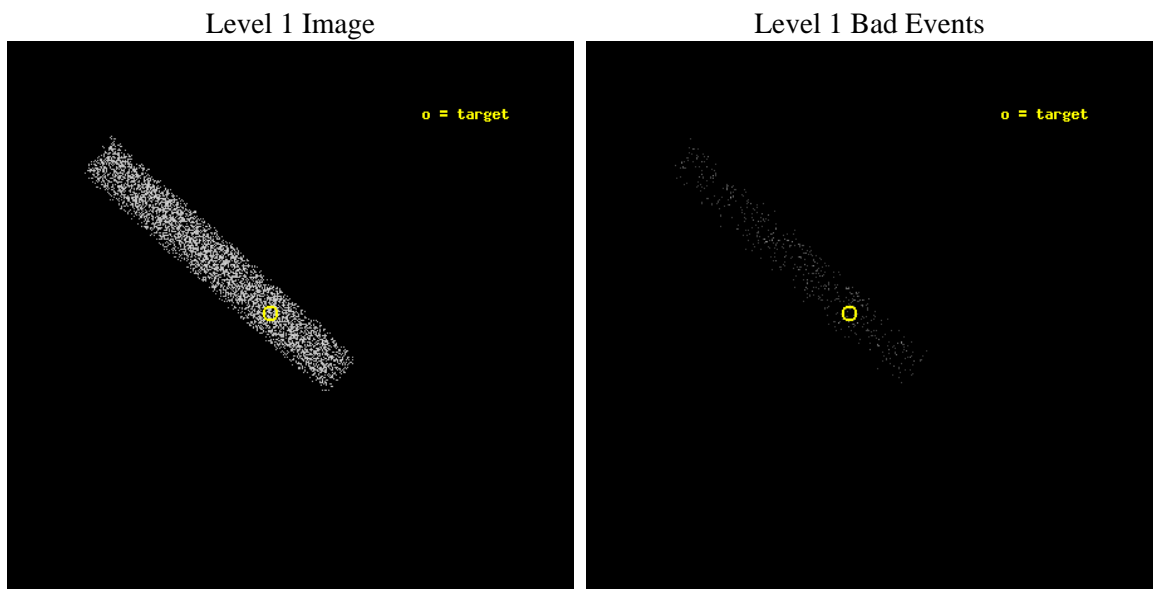
seq_num	700156	Sequence number
obs_id	851	Observation id
title	X-RAYS FROM RADIO-LOUD BROAD ABSORPTION LINE QSOS	Proposal title
observer	Prof. Michael Brotherton	Principal investigator
object	BAL 1044+3656	Source name
dtcycle	0	
cycle	P	events from which exps? Prim/Second/Both
ra_targ	161.248333	Observer's specified target RA [deg]
dec_targ	36.934722	Observer's specified target Dec [deg]
ra_nom	161.23747565598	Nominal RA [deg]
dec_nom	36.929427125188	Nominal Dec [deg]
roll_nom	221.84050807692	Nominal Roll [deg]
revision	4	Processing version of data
ontime	5332.926608637	Sum of GTIs [s]
livetime	4836.6829390867	Livetime [s]
ontime7	5332.926608637	Sum of GTIs [s]
l2events	2649	Number of level 2 events



2 OBI

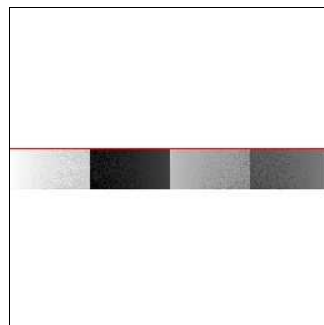
2.1 OBI

2.1.1 Images



2.1.2 Bias

Chip 7



2.1.3 Parameters

obi_num	1	Obi number	sched_exp_time	5000.000000	[s] Scheduled observation exposure time
ascdsver	8.4.5	Processing system revision	ontime	5332.926608637	Sum of GTIs [s]
caldsver	4.5.1.1	 	ontime7	5332.926608637	Sum of GTIs [s]
date	2012-08-25T02:52:23	Date and time of file creation	l1events	7013	Number of level 1 events
revision	4	Processing version of data			

2.1.4 Events

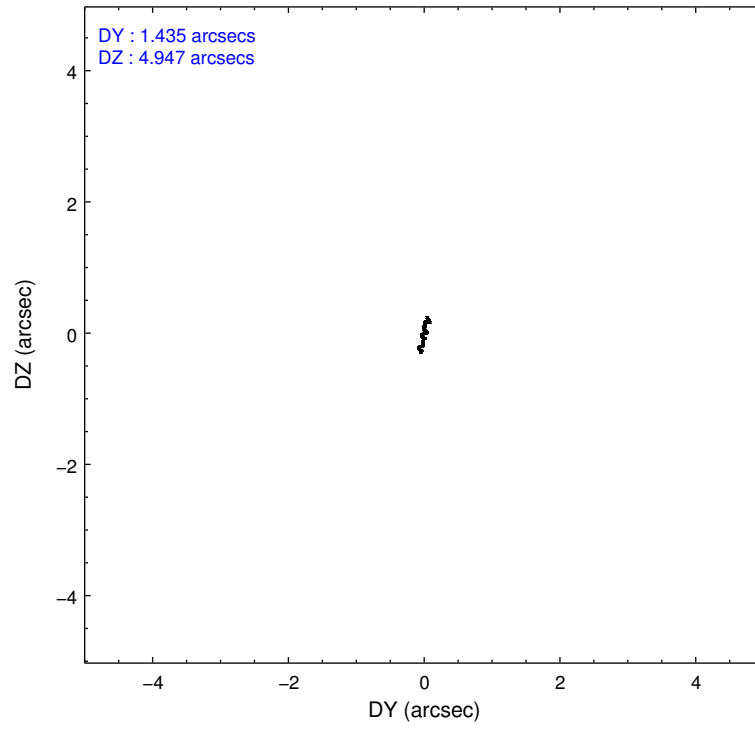
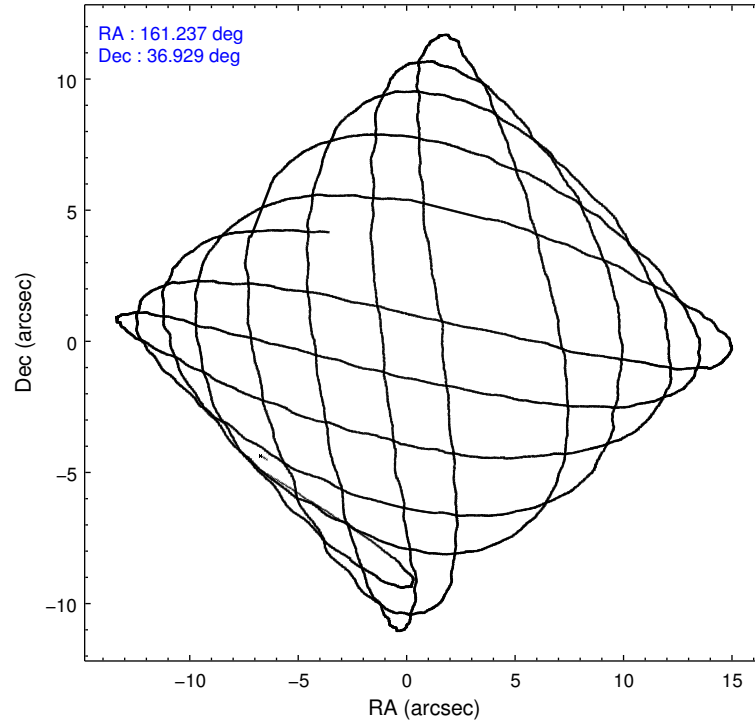
	ccd 7
level 1 events	7013
rejected events	4244
rejected %	60%

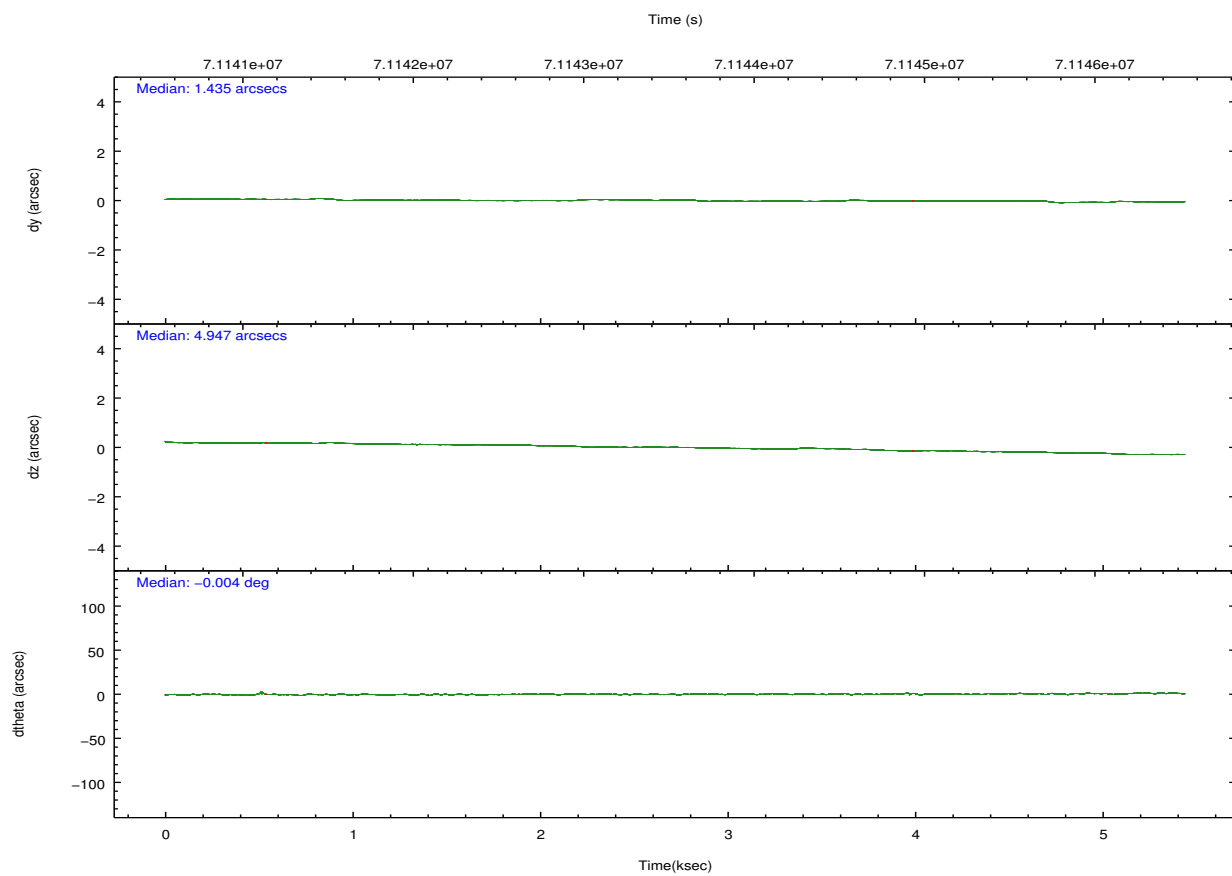
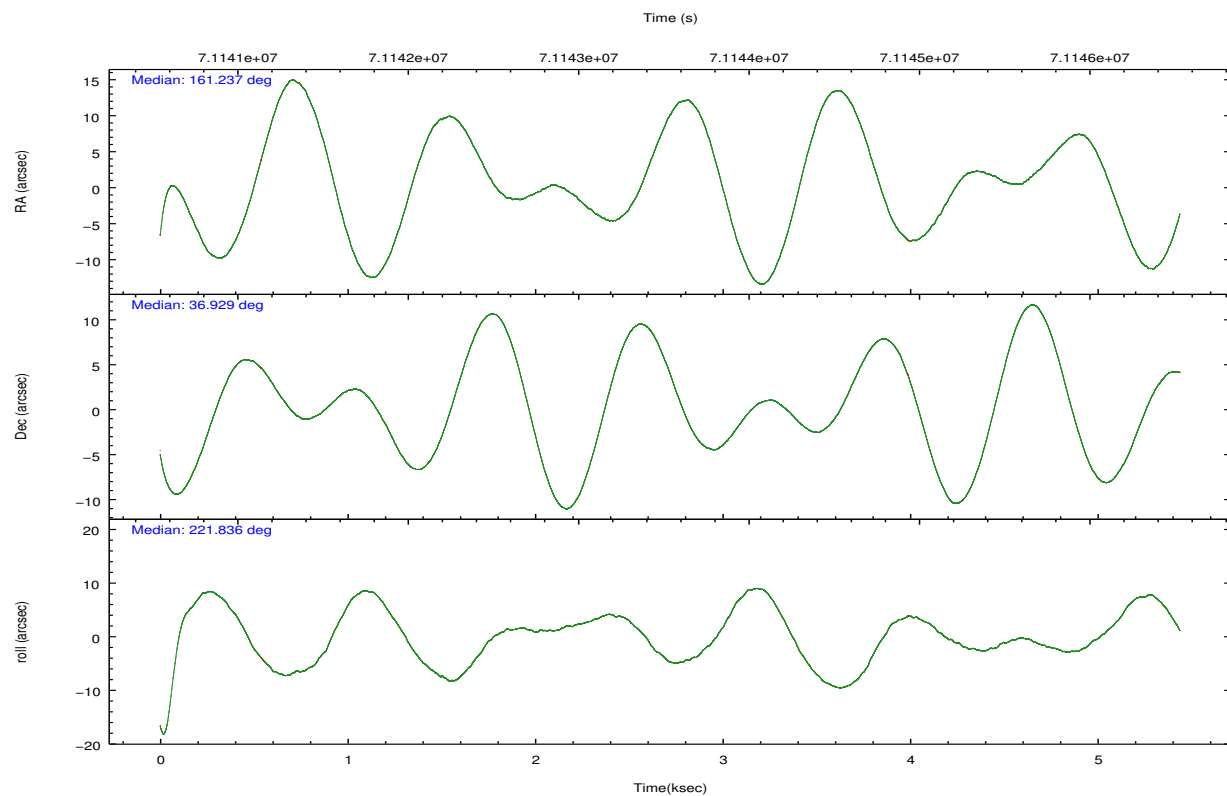
	ccd 7
grade 0 events	335
	4%
grade 1 events	4
	0%
grade 2 events	569
	8%
grade 3 events	463
	6%
grade 4 events	445
	6%
grade 5 events	644
	9%
grade 6 events	1427
	20%
grade 7 events	3126
	44%

2.2 Compared Parameters

Parameter	Planned	Actual	Parameter	Planned	Actual
Instrument	ACIS	ACIS	Obspar format version number	7	7
Detector	ACIS-7	ACIS-7	Obspar file type	PREDICTED	ACTUAL
Grating	NONE	NONE	Obspar update status	NONE	UPDATED
Data mode	VFAINT	VFAINT	Number of optional ACIS chips dropped	0	0
Observation mode	POINTING	POINTING	On-chip summing requested	N	N
[deg] Pointing RA	161.248230	161.2374756559843	Subarray requested	CUSTOM	1/8
[deg] Pointing Dec	36.955617	36.92942712518833	Subarray start row	447	447
[deg] Pointing Roll	221.676711	221.8405080769197	Subarray row count	128	128
[mm] SIM focus pos	-0.684267	-0.6828225247311905	Alternating exposures requested	N	N
[mm] SIM defocus	0	0.001444936568705701	[s] Primary exposure time	0.000000	0.4
[mm] SIM translation stage pos	-190.132523	-190.1425803651734			
[mm] SIM translation stage offset	0	0.01005778216563158			
[s] Observation start time (MET)	71141167.184000	71139899.845837			
Observation start date	2000-04-03T09:25:03	2000-04-03T09:04:59			
[s] Observation end time (MET)	71146167.184000	71147013.34609701			
Observation end date	2000-04-03T10:48:23	2000-04-03T11:03:33			
Read mode	TIMED	TIMED			

2.3 Aspect



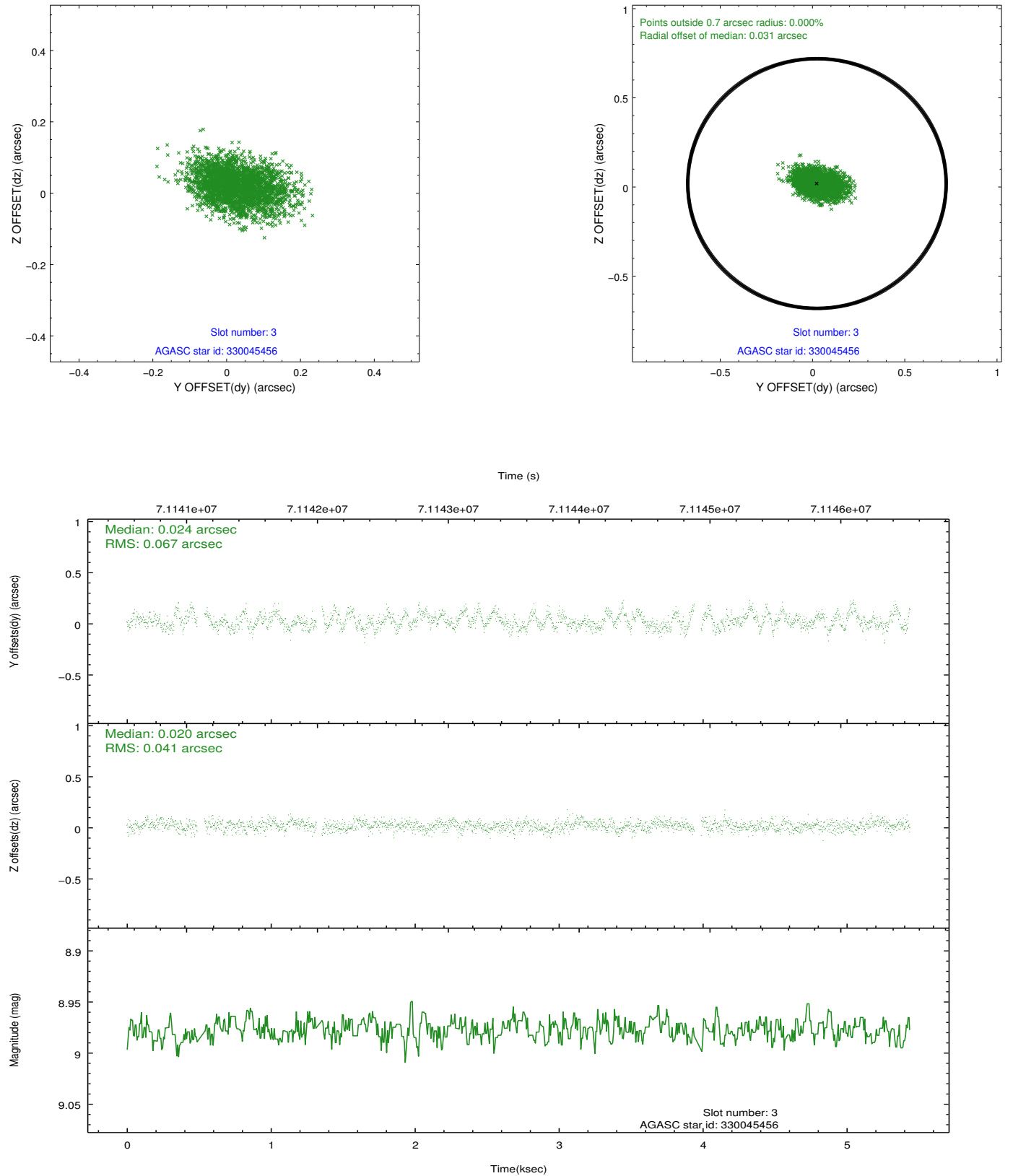


Slot Statistics

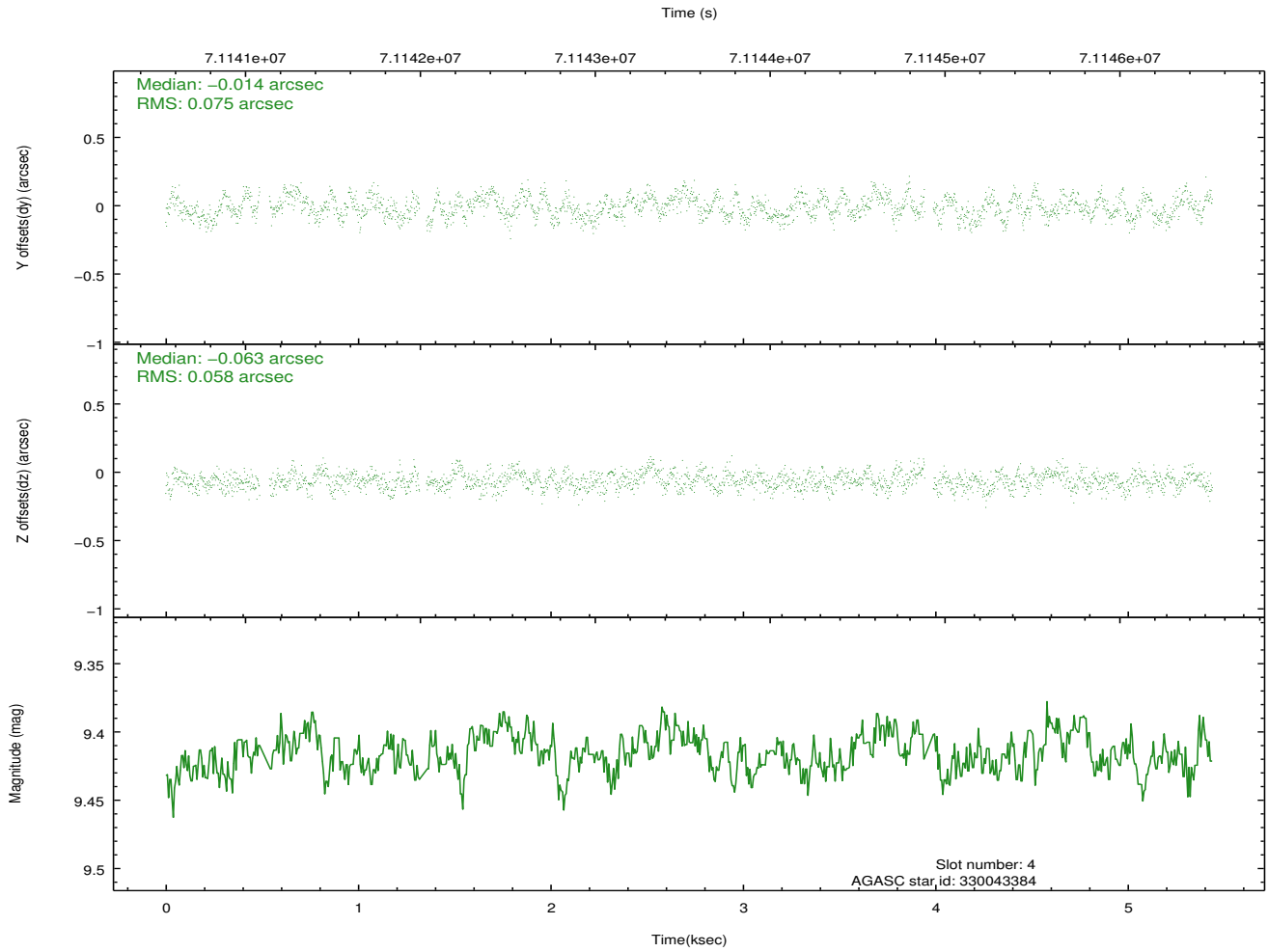
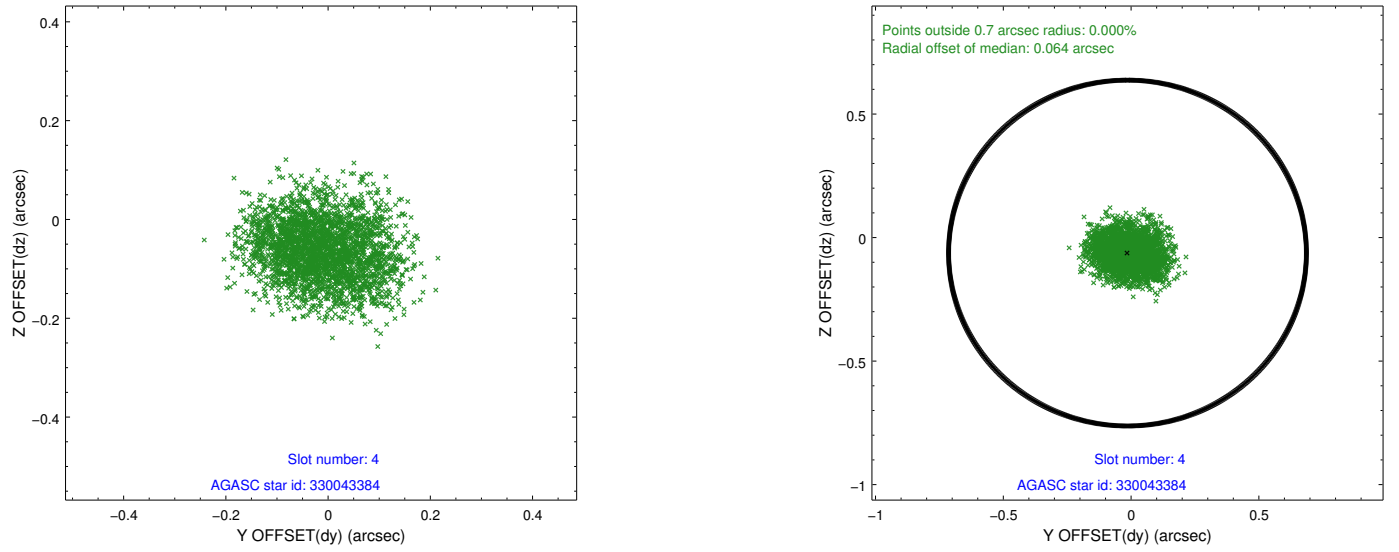
slot	status	id	mag	n_pts	med_dy	med_dz	dr1	dr2	ra	dec	mean_y	mean_z
0	FID	ACIS-S-2	7.11	1301	-0.028	-0.002	0.007	0.011	0.000000	0.000000	-754.07	-1725.99
1	FID	ACIS-S-4	7.21	1301	-0.005	0.014	0.006	0.010	0.000000	0.000000	2158.73	181.33
2	FID	ACIS-S-5	7.24	1299	0.003	-0.004	0.007	0.011	0.000000	0.000000	-1805.41	176.29
3	GUIDE	330045456	8.98	2585	0.024	0.020	0.082	0.138	160.383771	37.071512	1569.24	-1970.95
4	GUIDE	330043384	9.42	2590	-0.014	-0.063	0.104	0.159	160.525032	37.254488	827.30	-2188.15
5	GUIDE	330042456	10.38	2583	0.158	0.032	0.142	0.231	160.791193	36.470499	2147.23	421.66
6	GUIDE	330042928	8.78	2588	-0.061	-0.104	0.081	0.128	161.068452	37.497745	-914.28	-1799.49
7	GUIDE	330040088	9.76	2588	-0.109	0.121	0.114	0.186	161.950988	36.912288	-1413.30	1455.35

2.4 Star Slots

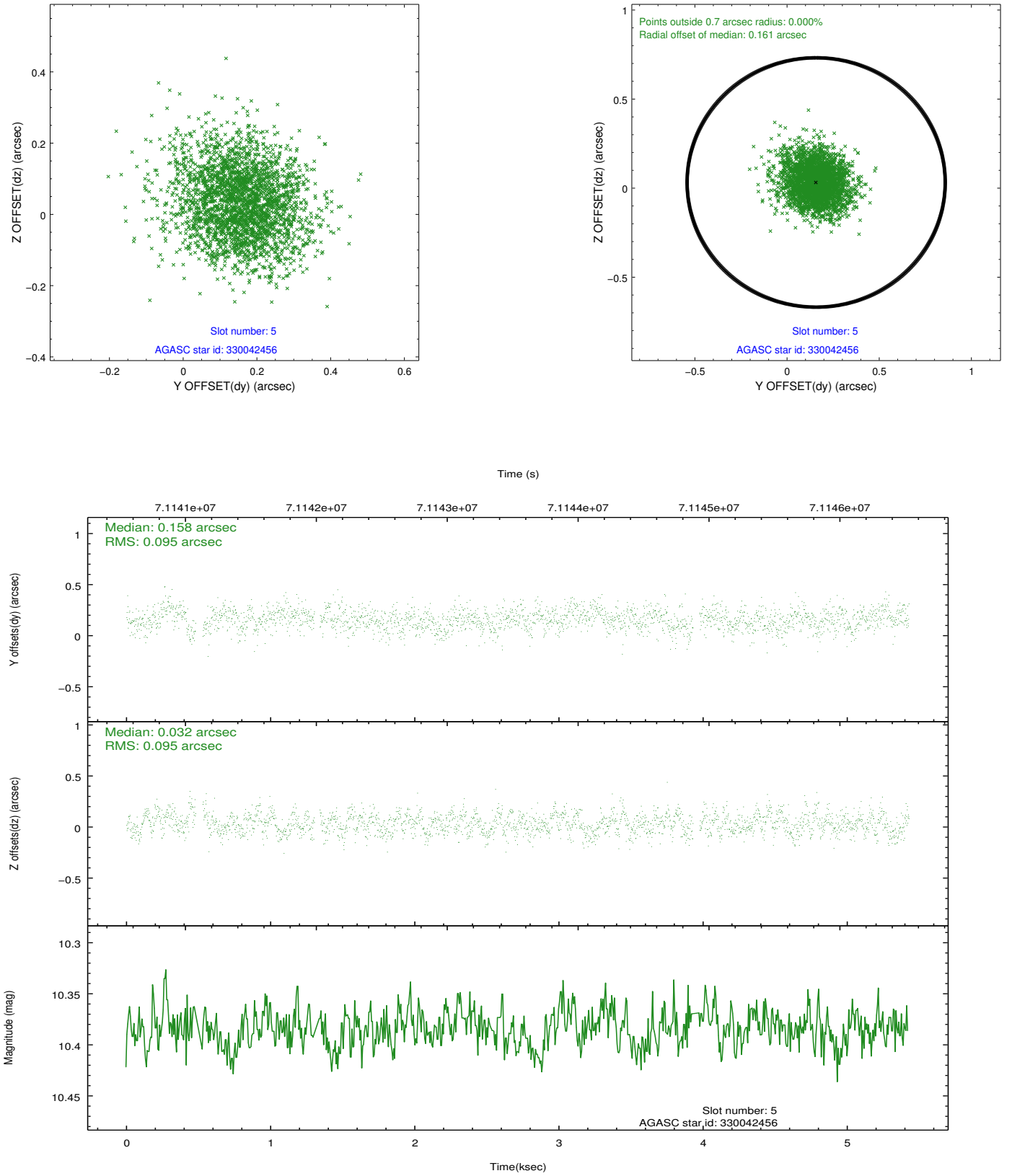
2.4.1 Slot 3



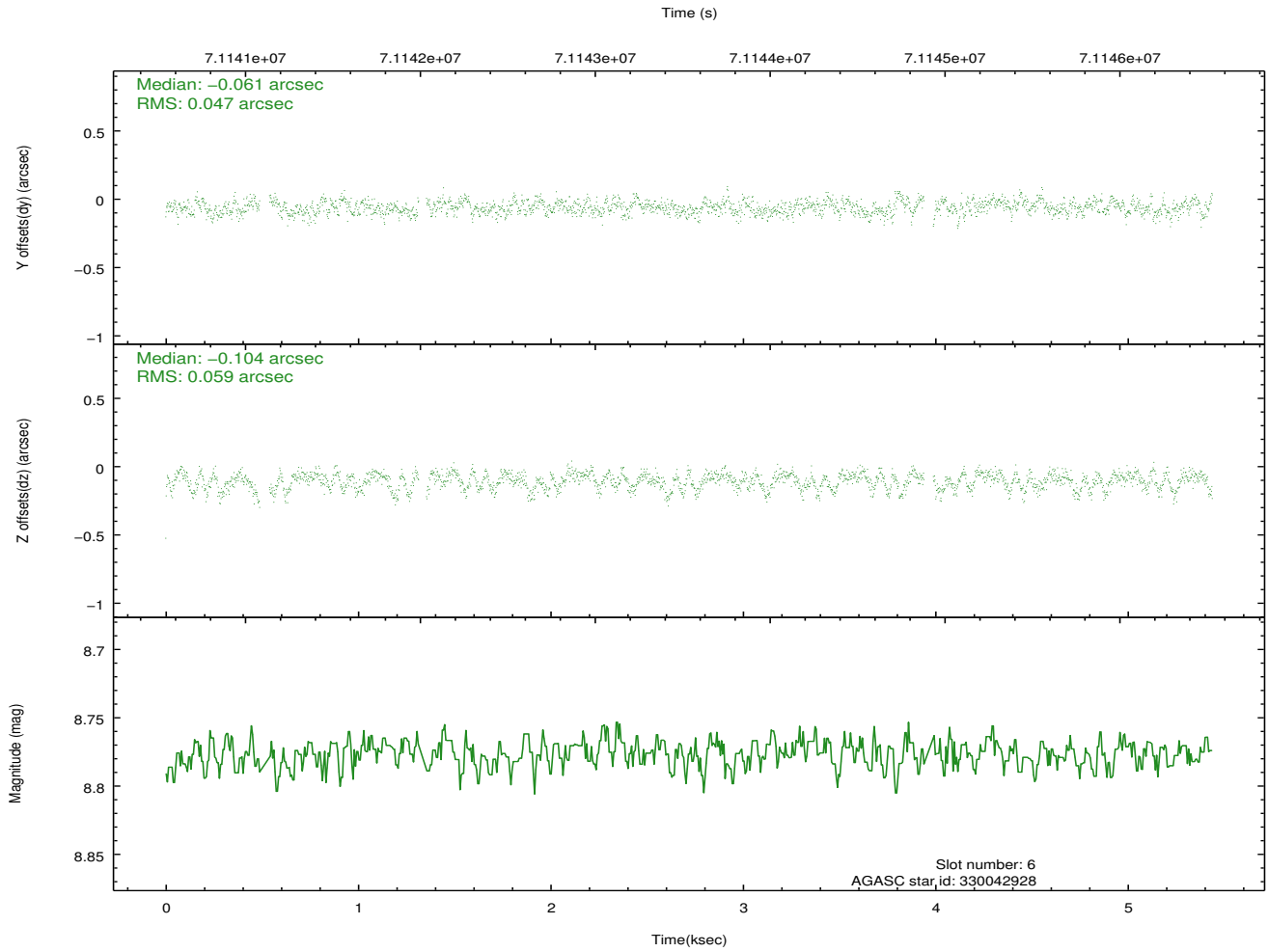
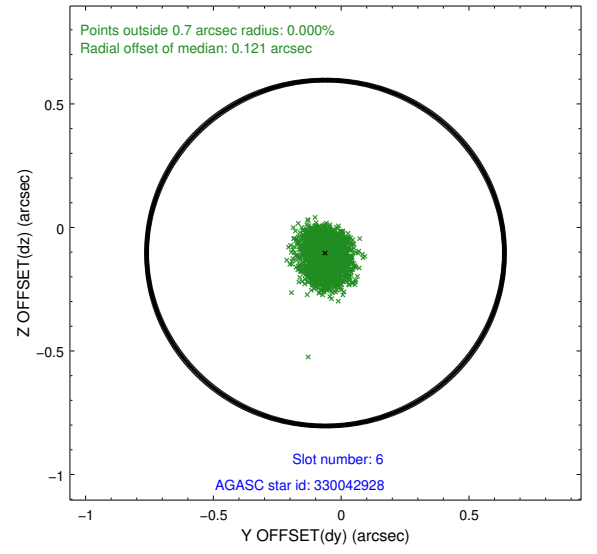
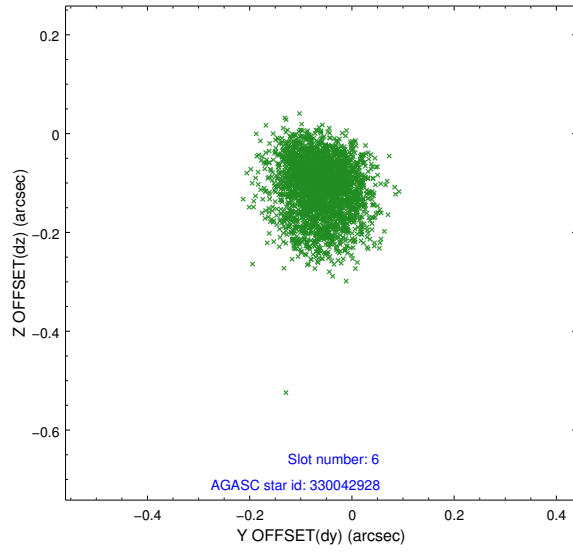
2.4.2 Slot 4



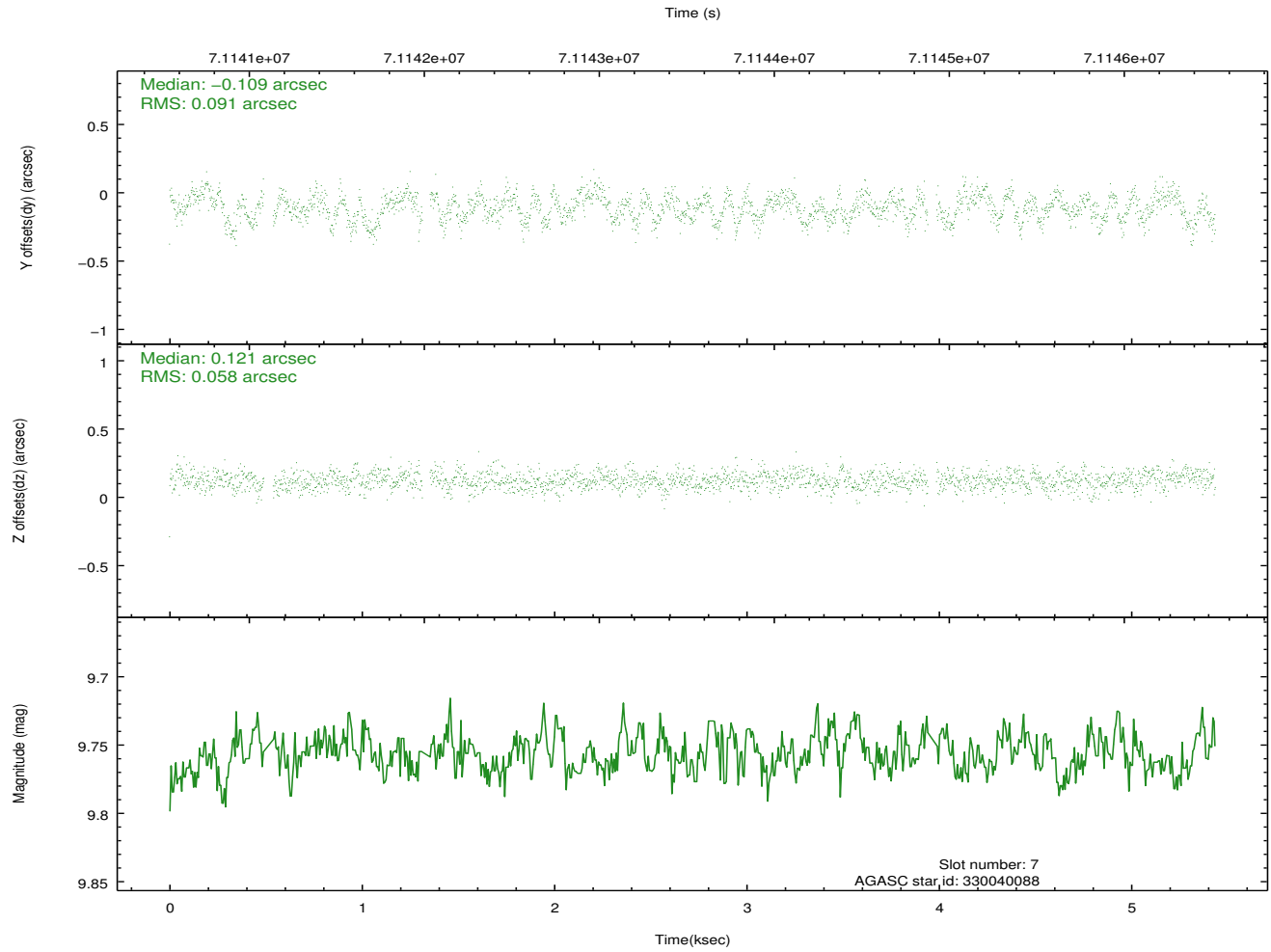
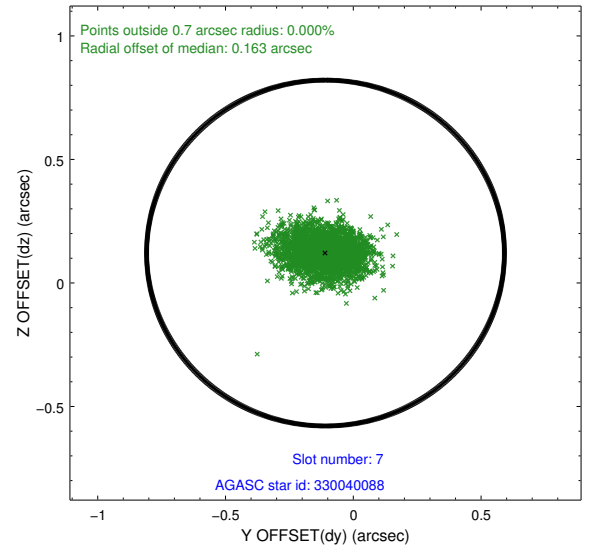
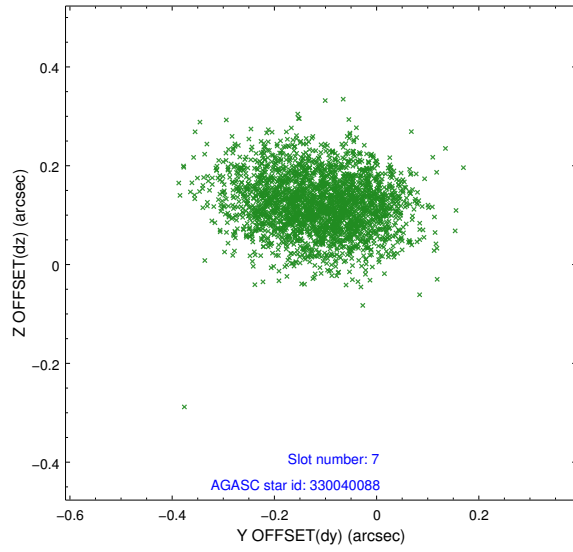
2.4.3 Slot 5



2.4.4 Slot 6

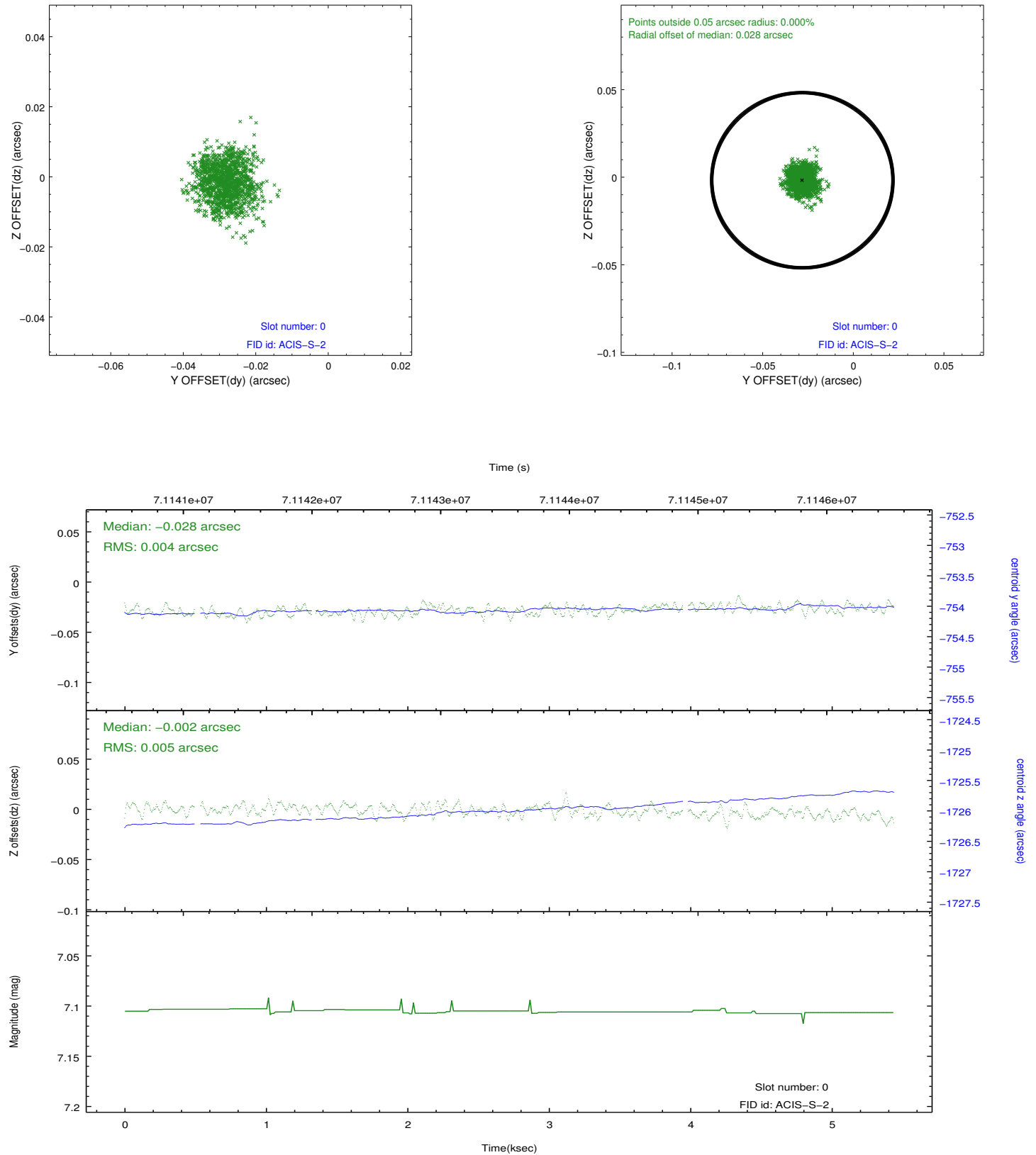


2.4.5 Slot 7

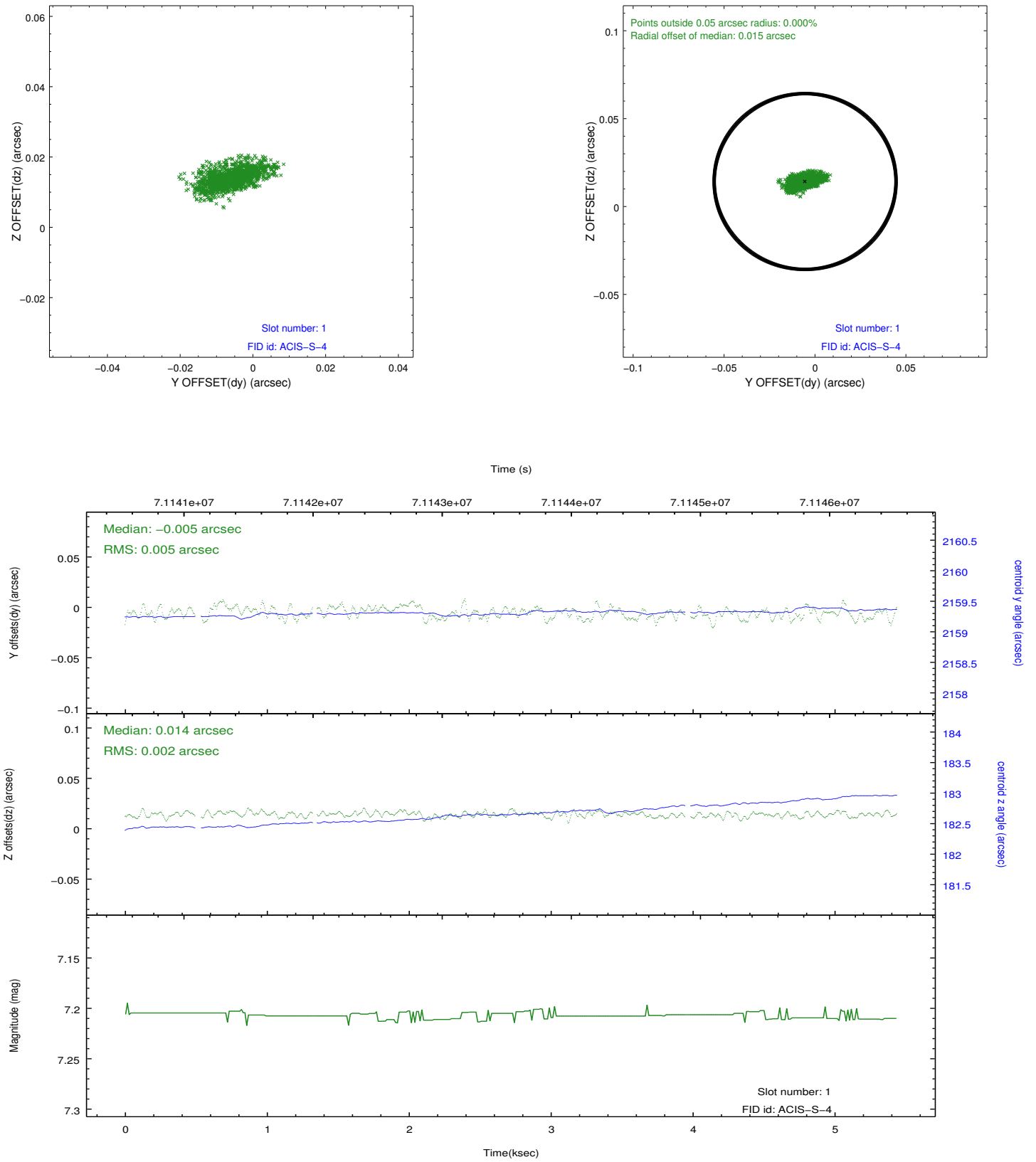


2.5 FID Slots

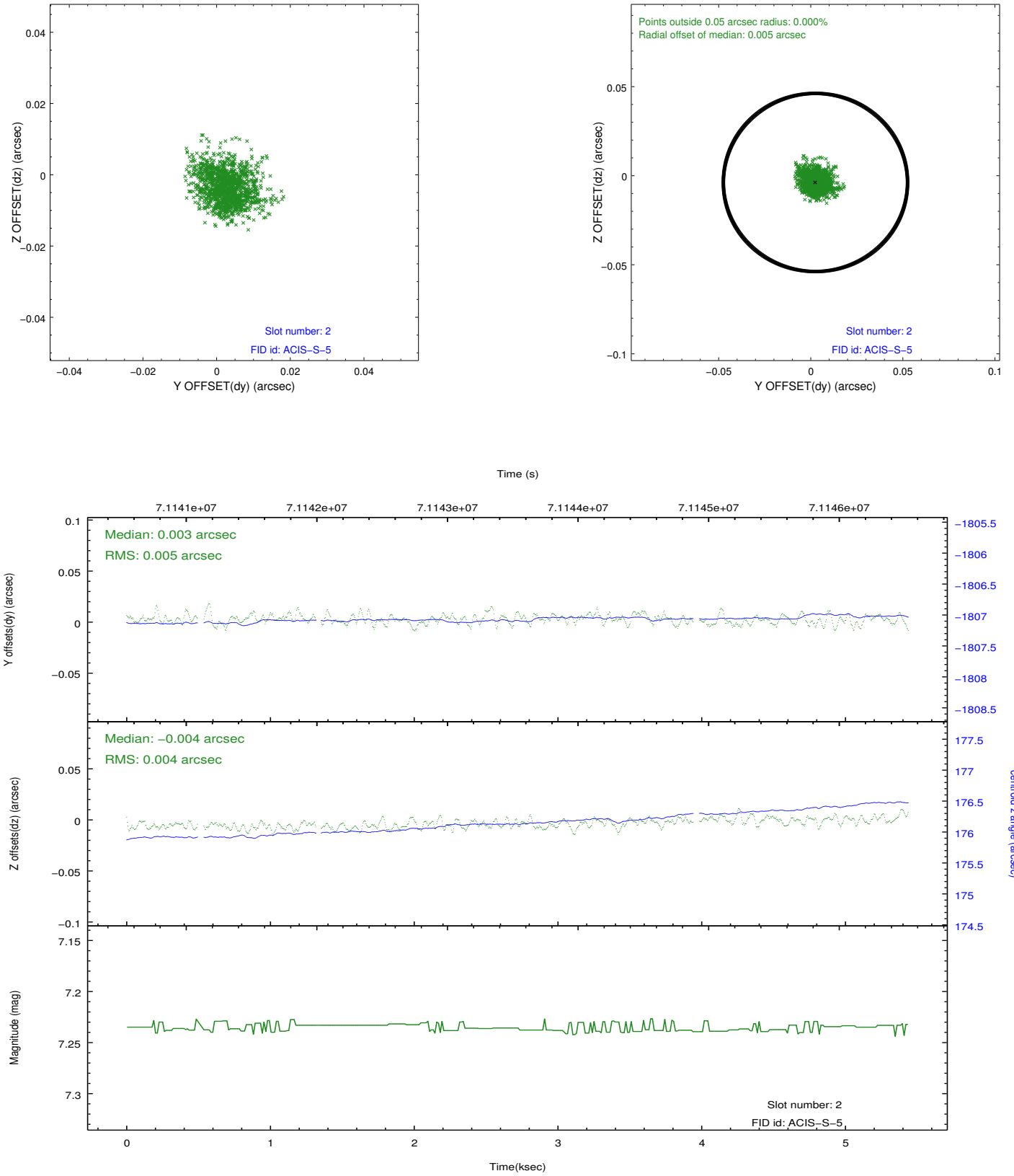
2.5.1 Slot 0



2.5.2 Slot 1



2.5.3 Slot 2



A Summary

A.1 Status

V&V Scientist	Jen Lauer
V&V Date (YYYY-MM-DD)	2012.08.27
V&V Edition	1
V&V Disposition and Status	OK
V&V Charge Time	5.336

A.2 Comments