

V&V Reference Report

L2 ASCDS Version : 8.4.5

Observation 838 - L2 Version 3
Chandra X-Ray Center

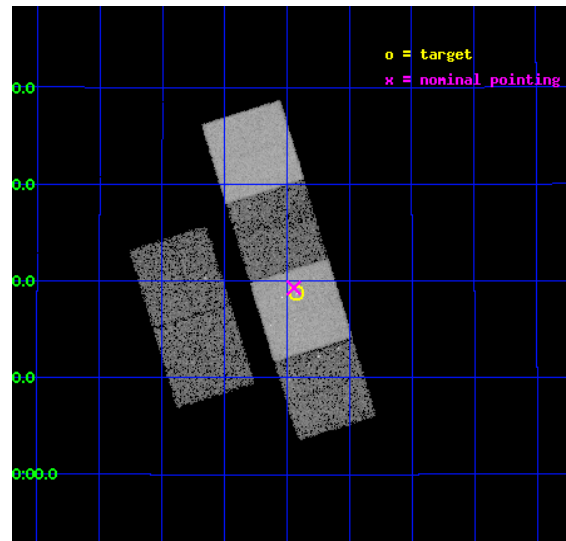
L2 Processing Date : Sep 5 2012

Contents

1	Front	2
2	OBI	3
2.1	OBI	3
2.1.1	Images	3
2.1.2	Bias	3
2.1.3	Parameters	4
2.1.4	Events	4
2.2	Compared Parameters	5
2.3	Aspect	6
2.4	Star Slots	9
2.4.1	Slot 3	9
2.4.2	Slot 4	10
2.4.3	Slot 5	11
2.4.4	Slot 6	12
2.4.5	Slot 7	13
2.5	FID Slots	14
2.5.1	Slot 0	14
2.5.2	Slot 1	15
2.5.3	Slot 2	16
A	Summary	17
A.1	Status	17
A.2	Comments	17

1 Front

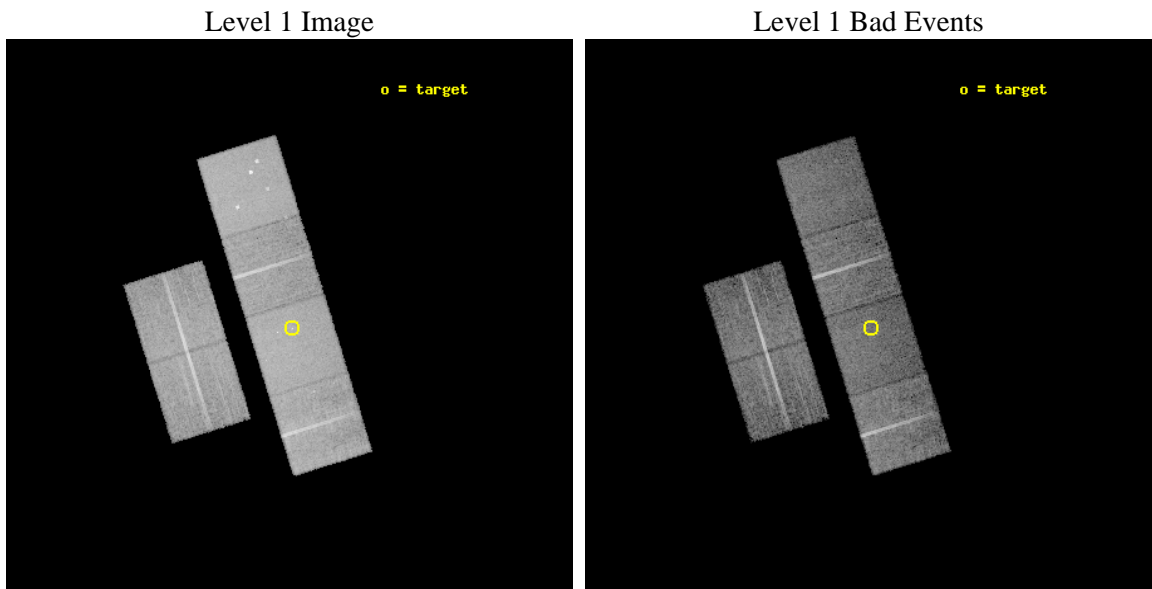
seq_num	700143	Sequence number
obs_id	838	Observation id
title	EXTENDED AND COMPACT X-RAY EMISSION IN DISTANT RADIO GALAXIES	Prop
observer	Prof Diana Worrall	Principal investigator
object	3C 200	Source name
dtcycle	0	
cycle	P	events from which exps? Prim/Second/Both
ra_targ	126.855833	Observer's specified target RA [deg]
dec_targ	29.312917	Observer's specified target Dec [deg]
ra_nom	126.86110093773	Nominal RA [deg]
dec_nom	29.321685591984	Nominal Dec [deg]
roll_nom	72.785971199795	Nominal Roll [deg]
revision	3	Processing version of data
ontime	14844.80001381	Sum of GTIs [s]
livetime	14656.82621757	Livetime [s]
ontime2	14844.80001381	Sum of GTIs [s]
ontime3	14844.80001381	Sum of GTIs [s]
ontime5	14844.80001381	Sum of GTIs [s]
ontime6	14844.80001381	Sum of GTIs [s]
ontime7	14844.80001381	Sum of GTIs [s]
ontime8	14844.80001381	Sum of GTIs [s]
l2events	142590	Number of level 2 events



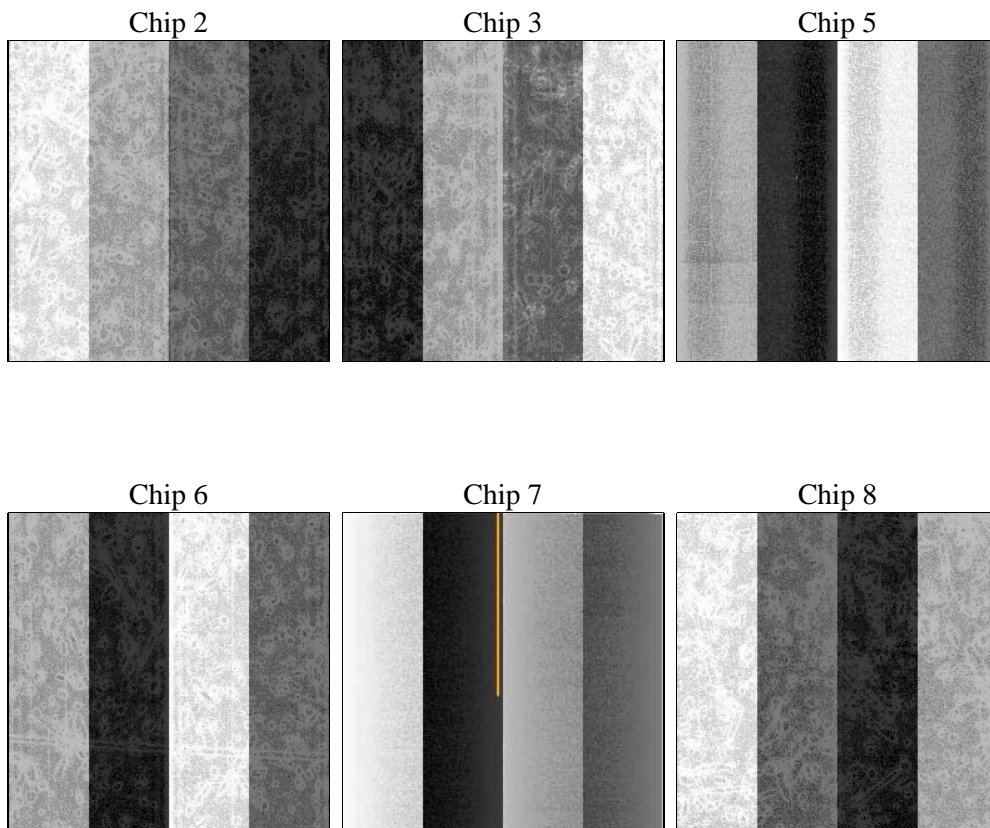
2 OBI

2.1 OBI

2.1.1 Images



2.1.2 Bias



2.1.3 Parameters

obi_num	0	Obi number	sched_exp_time	14680.000000	[s] Scheduled observation exposure time
ascdsver	8.4.5	Processing system revision	ontime	14844.80001381	Sum of GTIs [s]
caldsver	4.5.1.1	 	ontime2	14844.80001381	Sum of GTIs [s]
date	2012-09-05T15:09:37	Date and time of file creation	ontime3	14844.80001381	Sum of GTIs [s]
revision	3	Processing version of data	ontime5	14844.80001381	Sum of GTIs [s]
			ontime6	14844.80001381	Sum of GTIs [s]
			ontime7	14844.80001381	Sum of GTIs [s]
			ontime8	14844.80001381	Sum of GTIs [s]
			l1events	623916	Number of level 1 events

2.1.4 Events

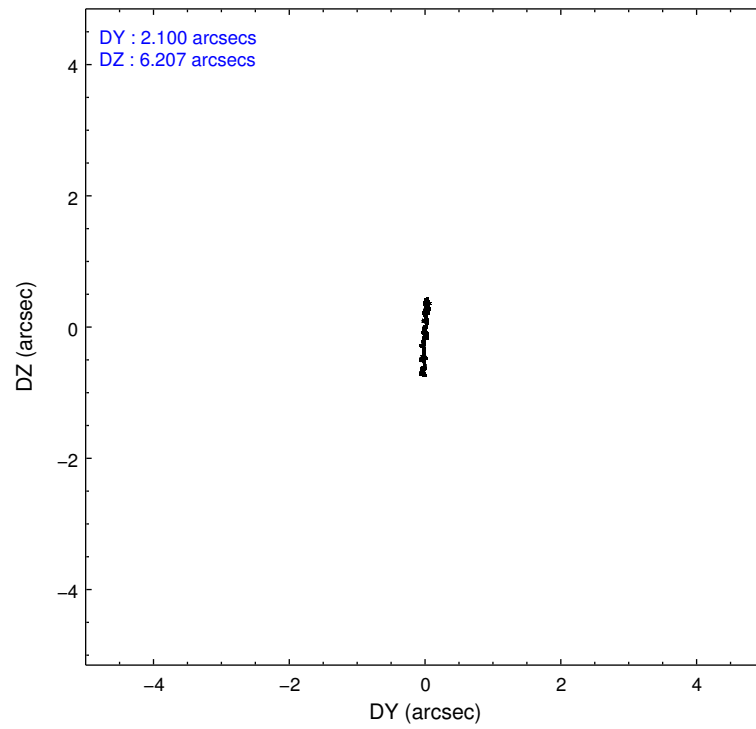
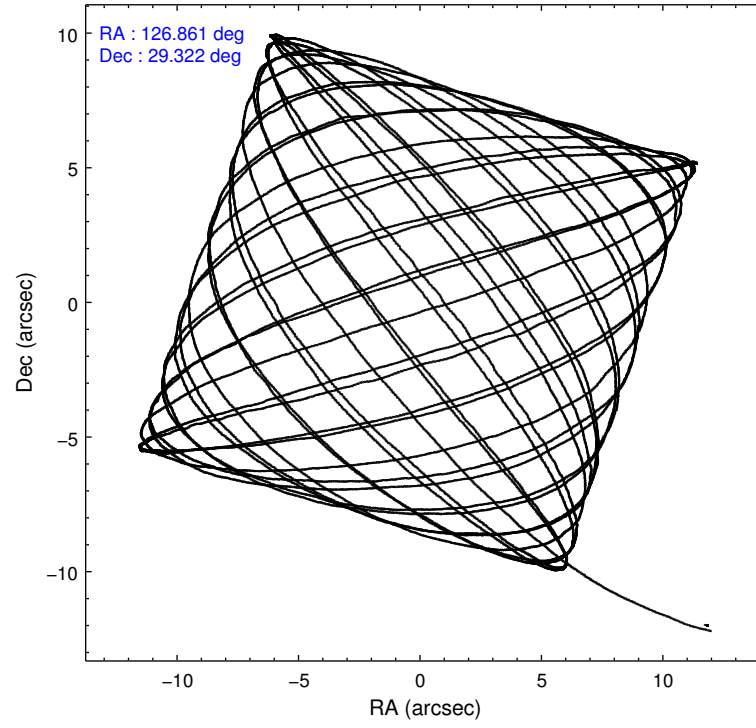
	ccd 2	ccd 3	ccd 5	ccd 6	ccd 7	ccd 8		ccd 2	ccd 3	ccd 5	ccd 6	ccd 7	ccd 8
level 1 events	90245	88613	128545	88898	116507	111108	grade 0 events	4083	3950	10067	3797	5506	7006
rejected events	80577	79236	65267	79202	64285	90040		4%	4%	7%	4%	4%	6%
rejected %	89%	89%	50%	89%	55%	81%	grade 1 events	44	43	204	28	99	66
								0%	0%	0%	0%	0%	0%
							grade 2 events	1992	1864	17002	1940	10274	4329
								2%	2%	13%	2%	8%	3%
							grade 3 events	916	963	2842	1060	4787	2257
								1%	1%	2%	1%	4%	2%
							grade 4 events	940	922	2710	991	4659	2189
								1%	1%	2%	1%	3%	1%
							grade 5 events	2963	3201	9163	3561	10391	4491
								3%	3%	7%	4%	8%	4%
							grade 6 events	1741	1682	30686	1910	27029	5291
								1%	1%	23%	2%	23%	4%
							grade 7 events	77566	75988	55871	75611	53762	85479
								85%	85%	43%	85%	46%	76%

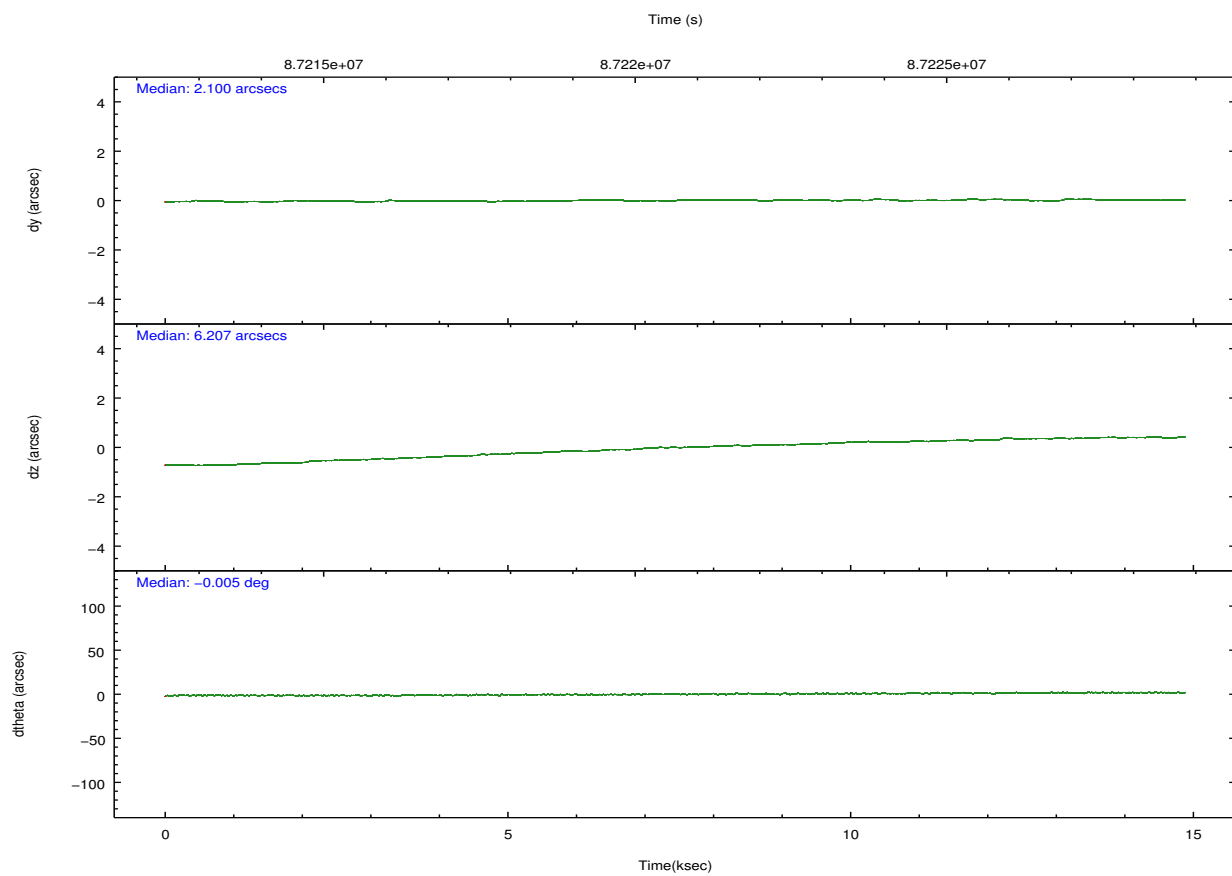
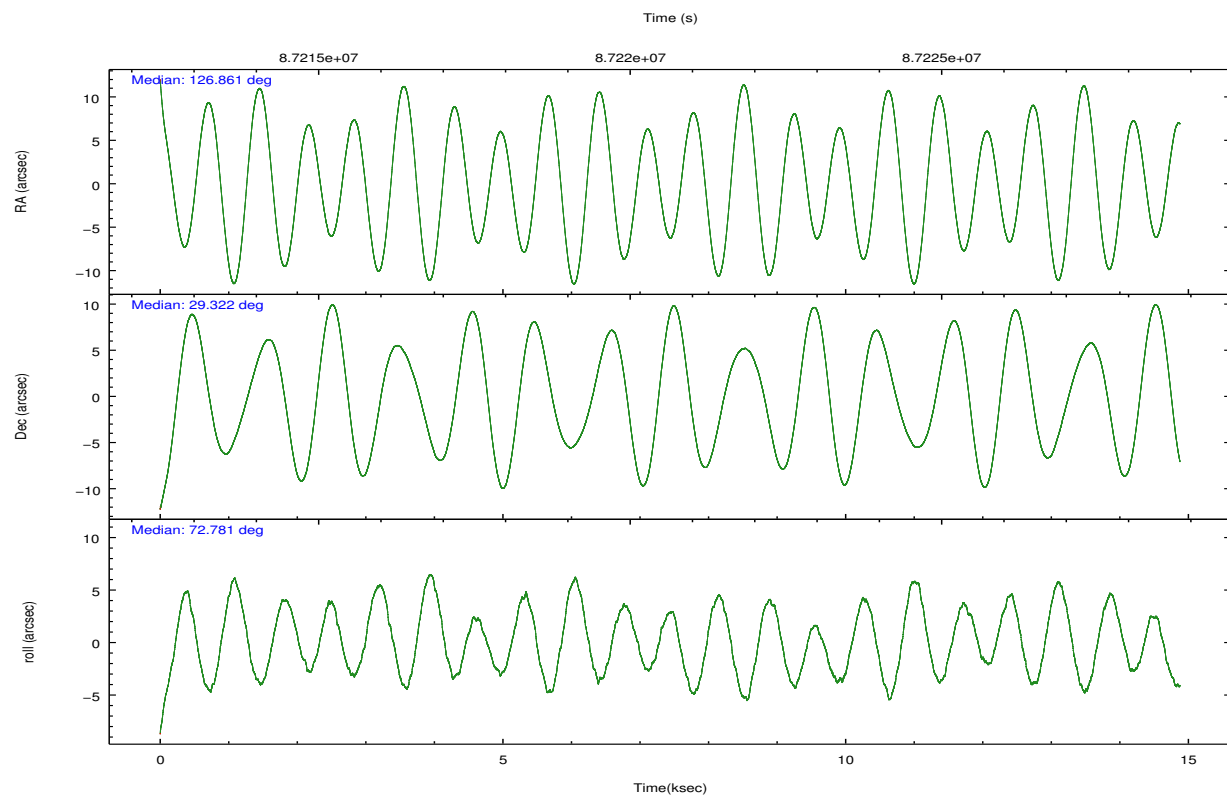
2.2 Compared Parameters

Parameter	Planned	Actual
Instrument	ACIS	ACIS
Detector	ACIS-235678	ACIS-235678
Grating	NONE	NONE
Data mode	FAINT	FAINT
Observation mode	POINTING	POINTING
[deg] Pointing RA	126.868244	126.8611009377345
[deg] Pointing Dec	29.295034	29.32168559198412
[deg] Pointing Roll	72.625846	72.78597119979506
[mm] SIM focus pos	-0.684267	-0.6828225247311905
[mm] SIM defocus	0	0.001444936568705701
[mm] SIM translation stage pos	-190.132523	-190.1400660498719
[mm] SIM translation stage offset	0	0.00754346686406393
[s] Observation start time (MET)	87213397.184000	87212325.816686
Observation start date	2000-10-06T09:55:33	2000-10-06T09:38:45
[s] Observation end time (MET)	87228077.184000	87228550.029799
Observation end date	2000-10-06T14:00:13	2000-10-06T14:09:10
Read mode	TIMED	TIMED

Parameter	Planned	Actual
Obspar format version number	7	7
Obspar file type	PREDICTED	ACTUAL
Obspar update status	NONE	UPDATED
Number of optional ACIS chips dropped	0	0
On-chip summing requested	N	N
Subarray requested	NONE	NONE
Alternating exposures requested	N	N
[s] Primary exposure time	0.000000	3.2

2.3 Aspect



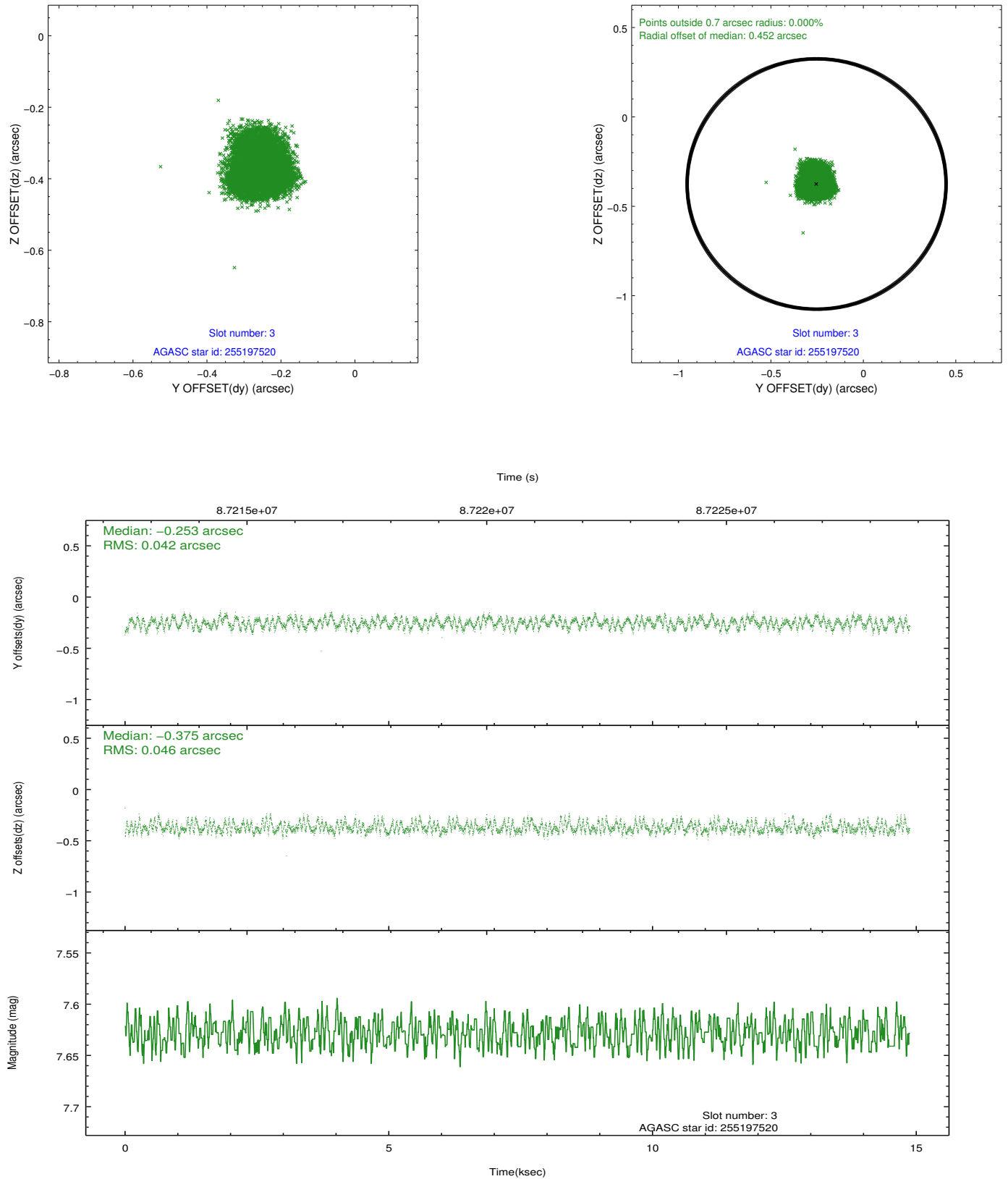


Slot Statistics

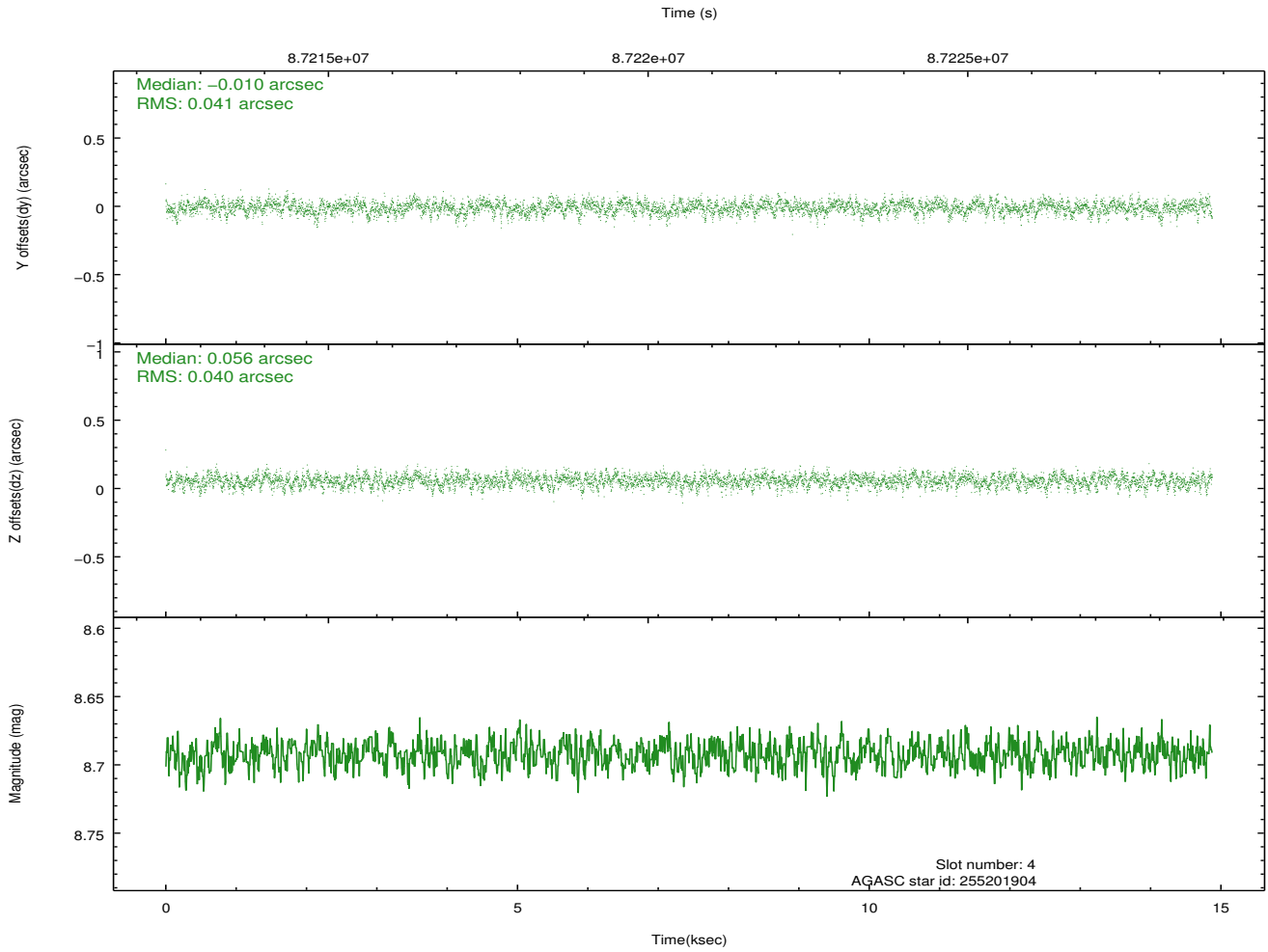
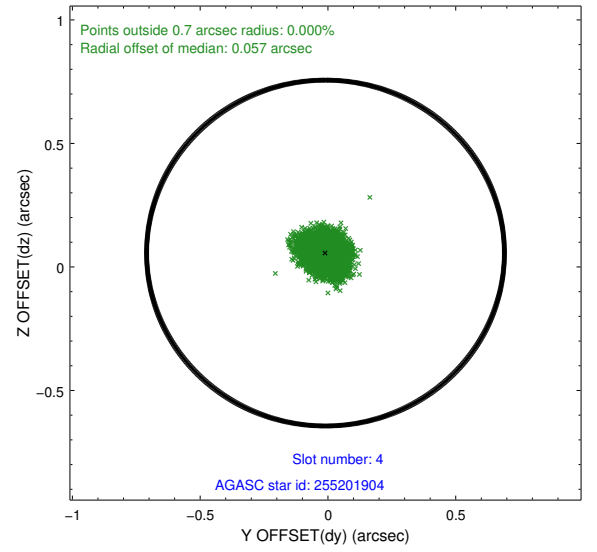
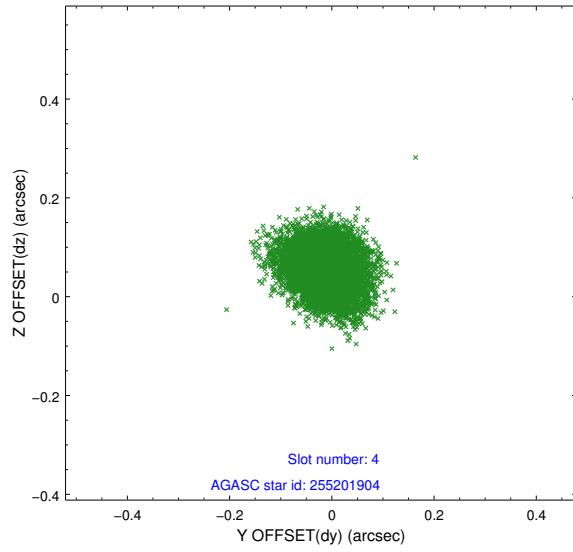
slot	status	id	mag	n_pts	med_dy	med_dz	dr1	dr2	ra	dec	mean_y	mean_z
0	FID	ACIS-S-2	7.11	3629	-0.044	-0.006	0.008	0.014	0.000000	0.000000	-754.74	-1727.29
1	FID	ACIS-S-4	7.20	3629	-0.008	0.022	0.008	0.014	0.000000	0.000000	2158.41	180.94
2	FID	ACIS-S-5	7.24	3629	0.020	-0.008	0.007	0.012	0.000000	0.000000	-1807.15	174.89
3	GUIDE	255197520	7.63	7258	-0.253	-0.375	0.068	0.102	126.331195	29.651749	726.76	1988.40
4	GUIDE	255201904	8.69	7258	-0.010	0.056	0.061	0.098	127.318403	29.469311	1022.49	-1157.45
5	GUIDE	255201664	8.89	7255	0.098	0.227	0.070	0.110	127.299286	28.580375	-2046.15	-2067.71
6	GUIDE	255203768	9.04	7255	0.056	0.059	0.069	0.112	126.964842	29.088461	-619.46	-511.80
7	GUIDE	255202144	9.30	7233	0.111	0.034	0.076	0.123	126.797640	28.931420	-1315.86	-177.94

2.4 Star Slots

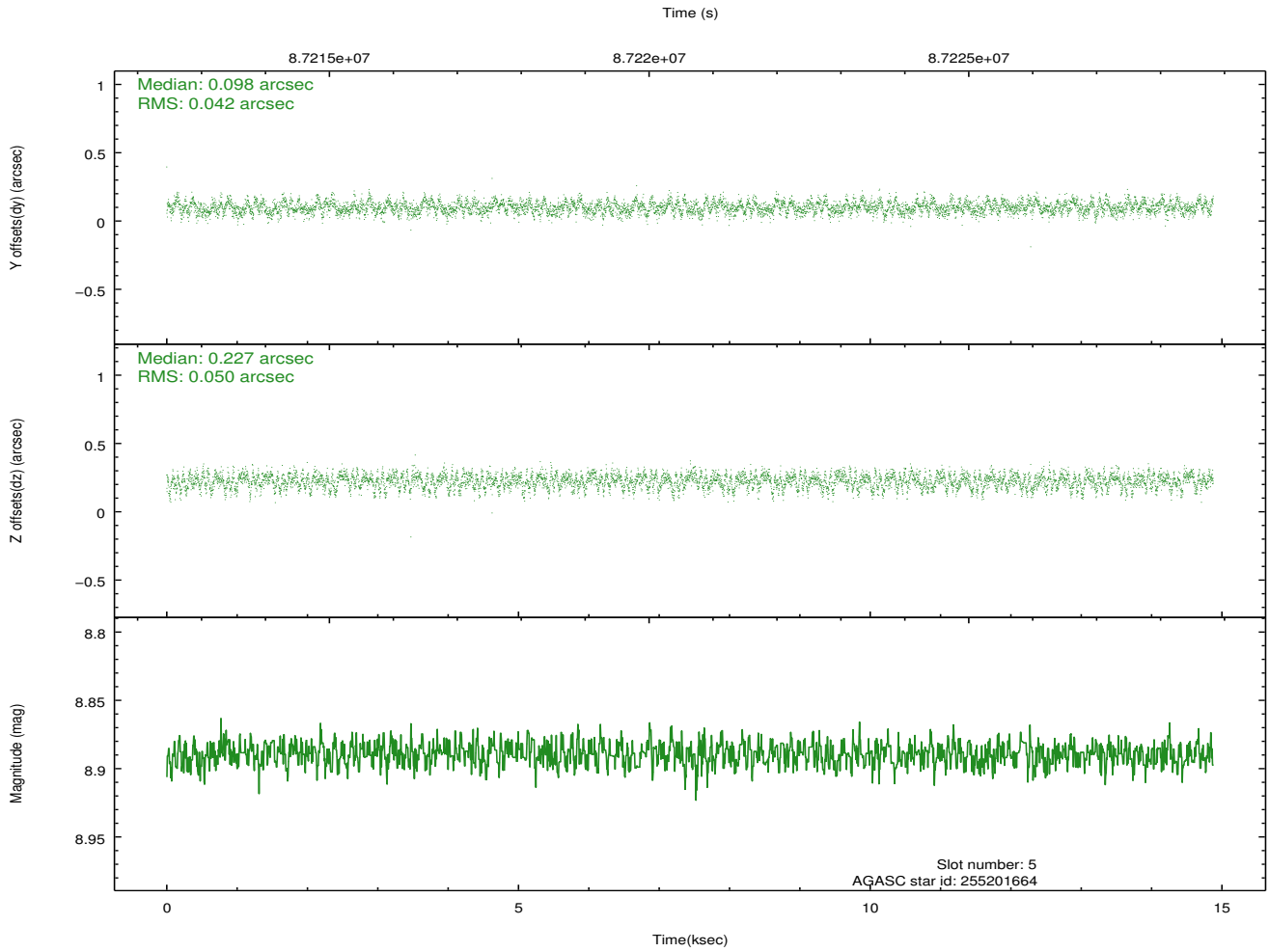
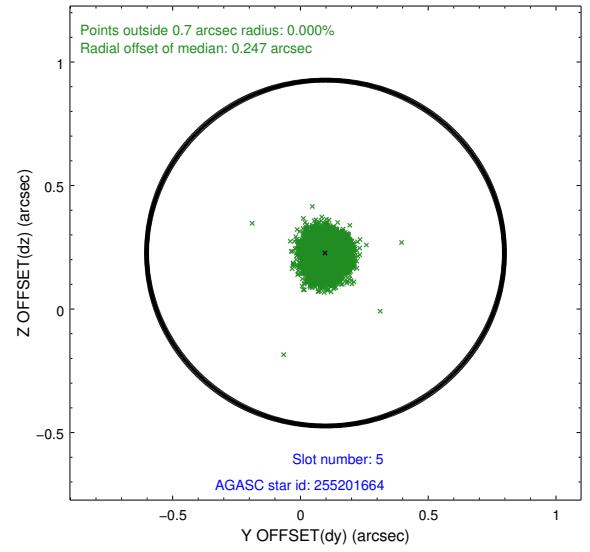
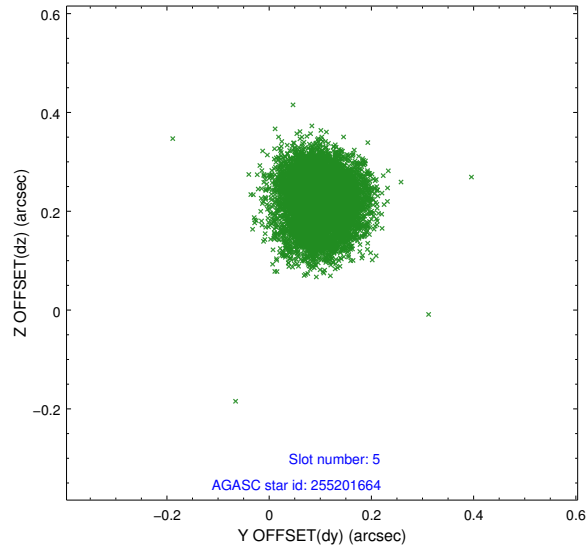
2.4.1 Slot 3



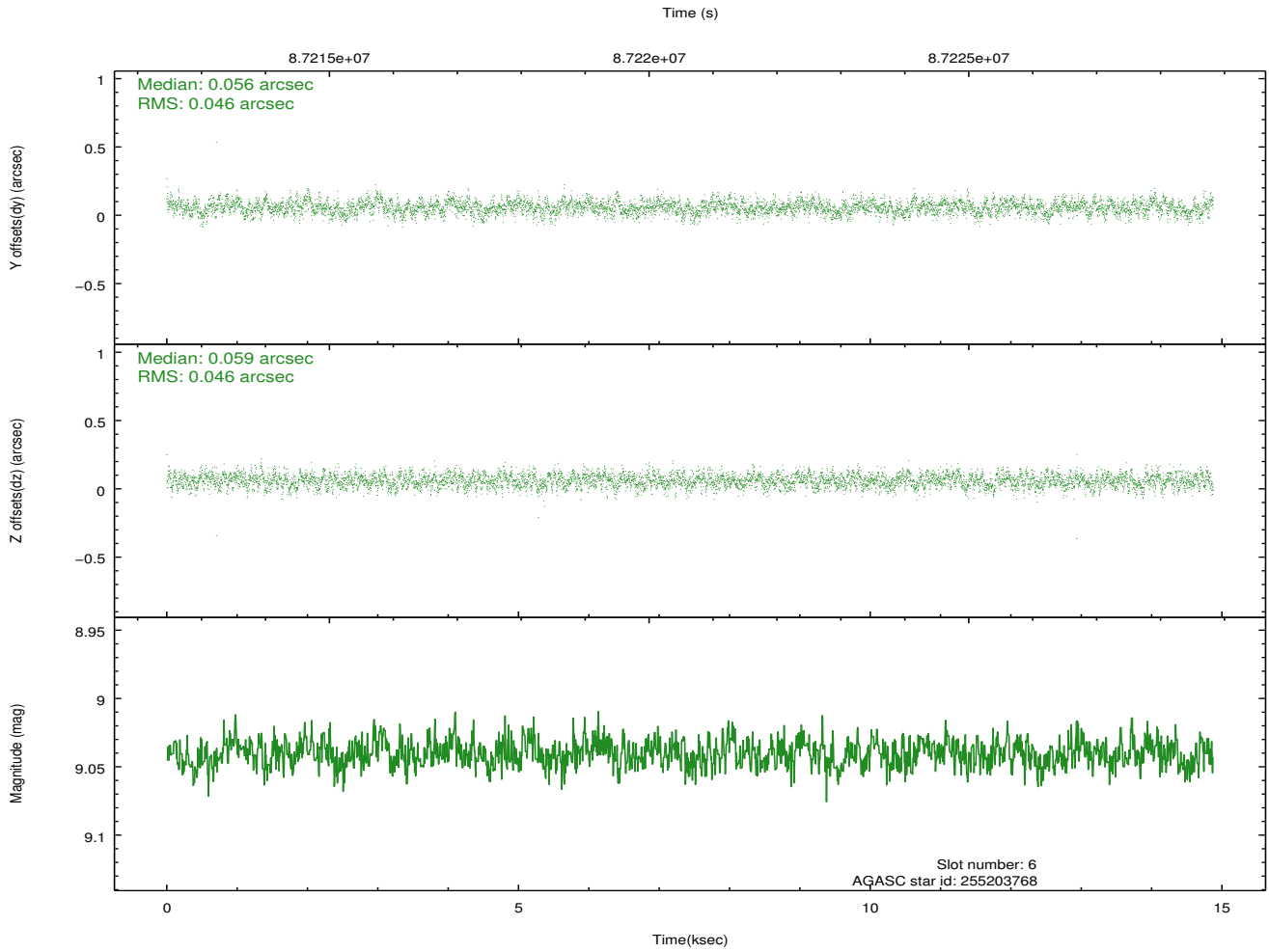
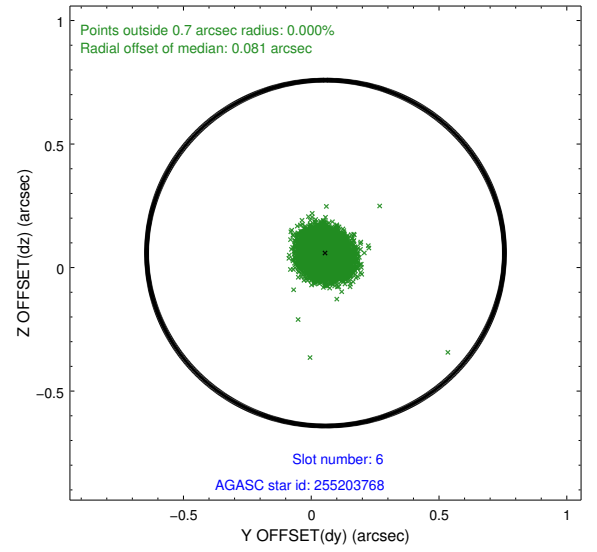
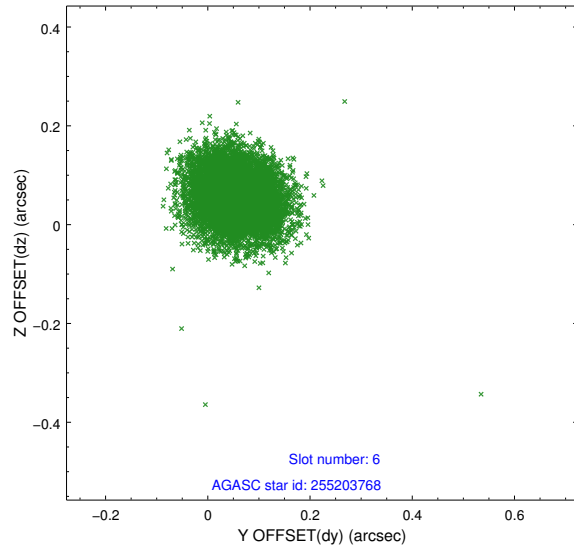
2.4.2 Slot 4



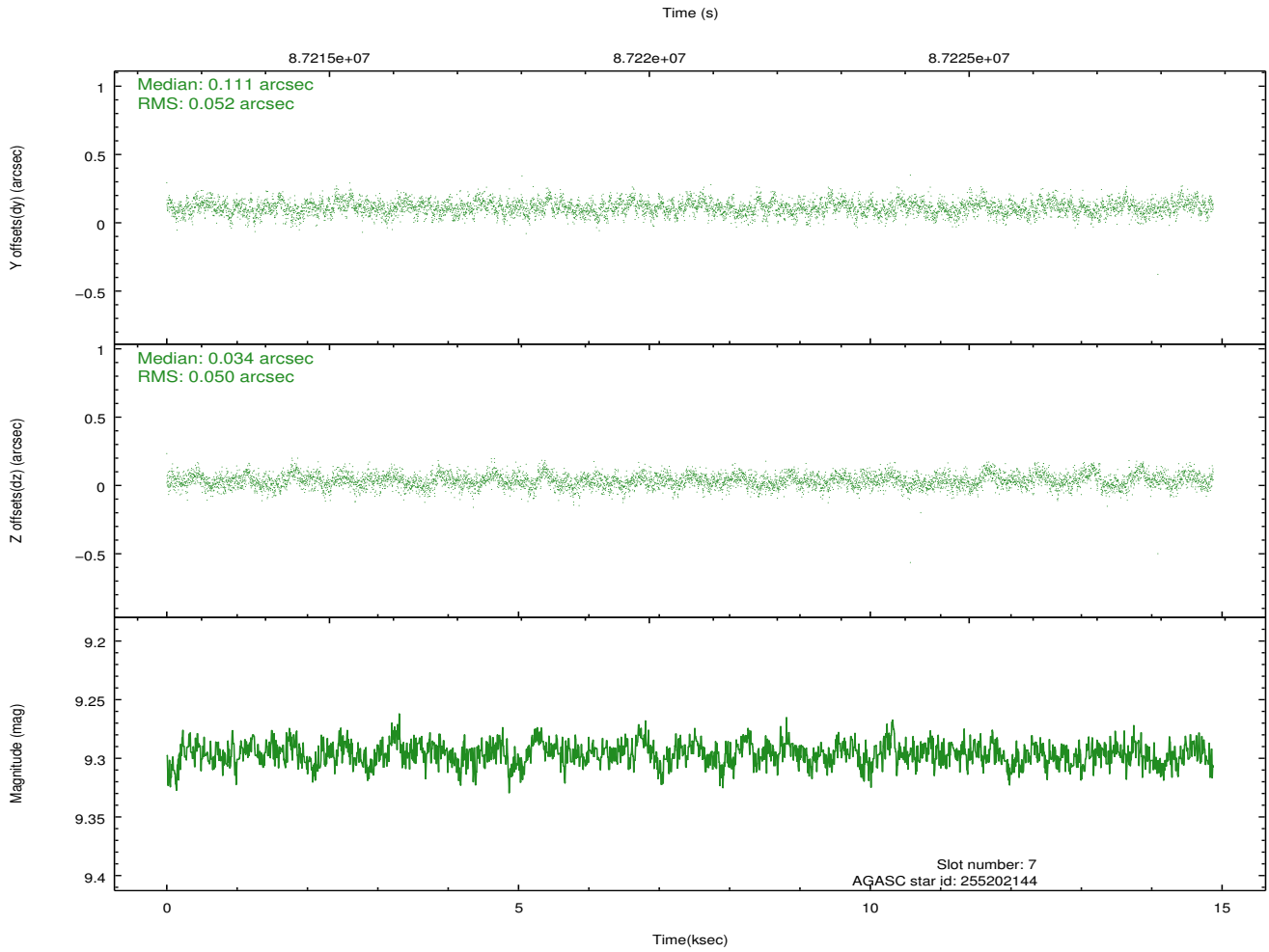
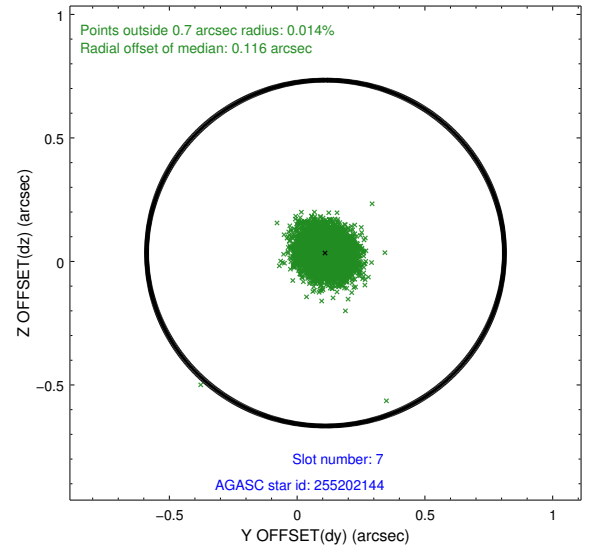
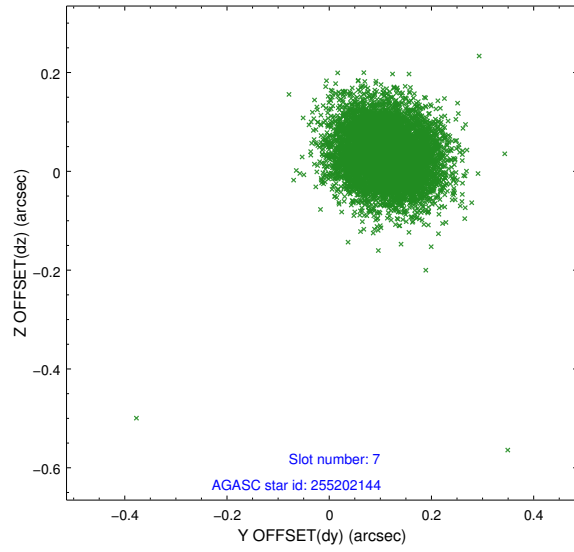
2.4.3 Slot 5



2.4.4 Slot 6

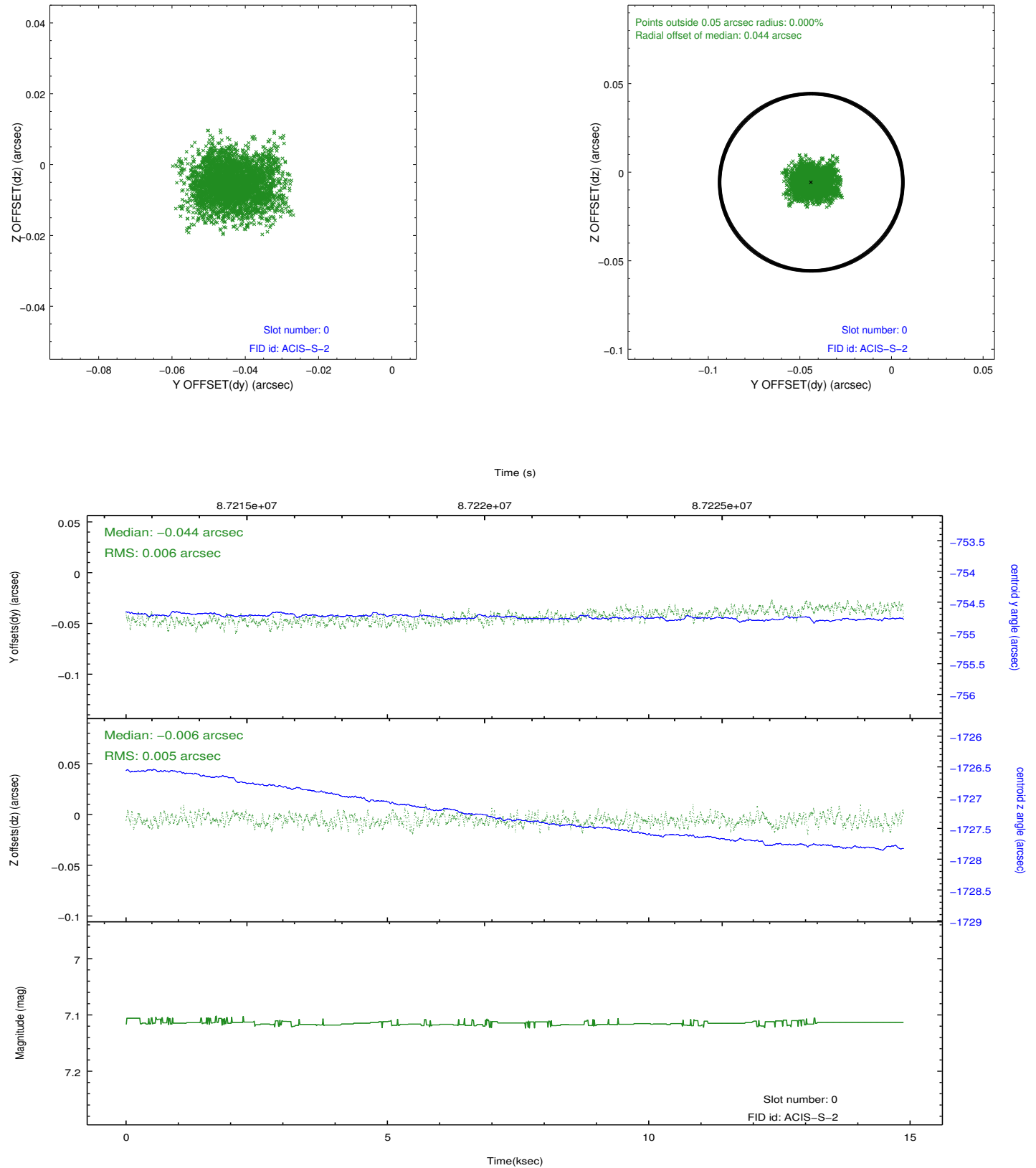


2.4.5 Slot 7

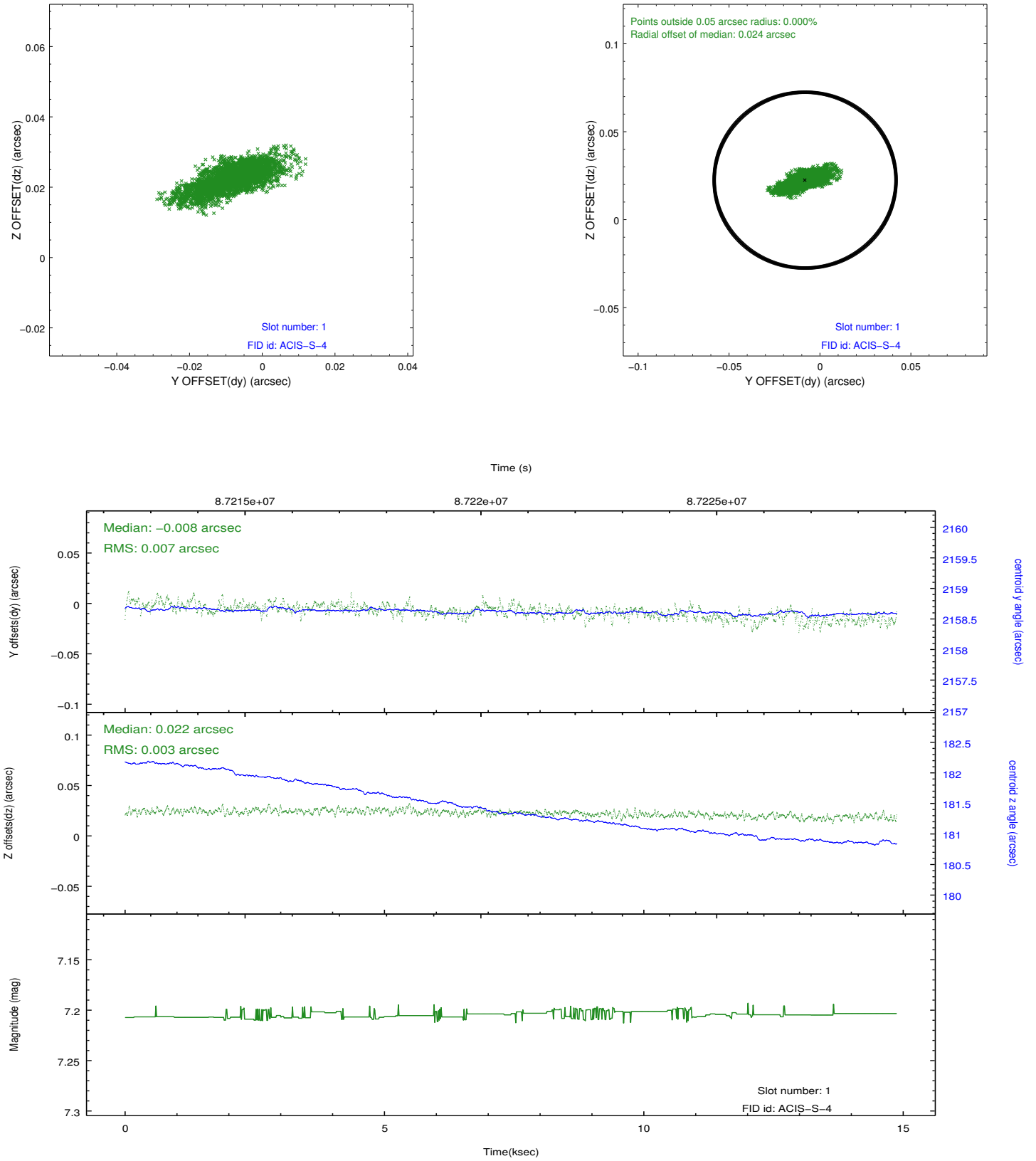


2.5 FID Slots

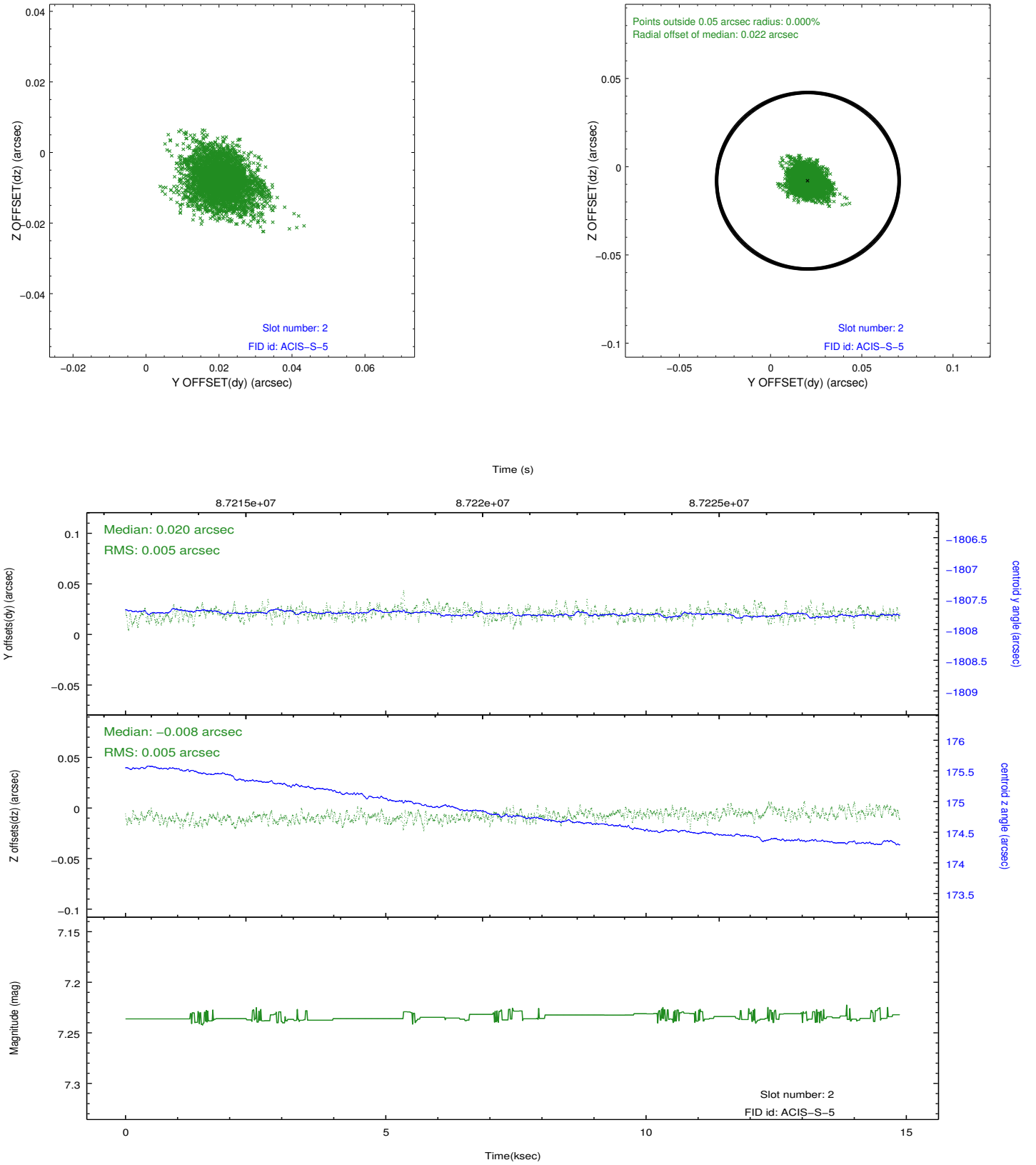
2.5.1 Slot 0



2.5.2 Slot 1



2.5.3 Slot 2



A Summary

A.1 Status

V&V Scientist	Jen Lauer
V&V Date (YYYY-MM-DD)	2012.09.14
V&V Edition	1
V&V Disposition and Status	OK
V&V Charge Time	14.848

A.2 Comments