

# V&V Reference Report

## L2 ASCDS Version : 8.1.1

Observation 814 - L2 Version 4

Chandra X-Ray Center

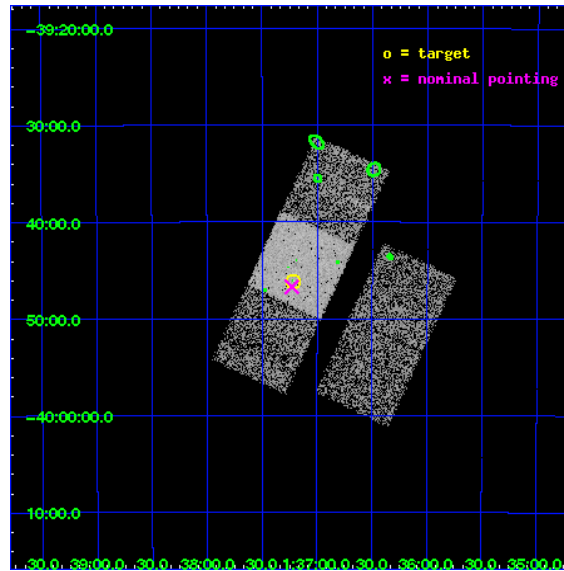
L2 Processing Date : Nov 29 2009

## Contents

<b>1</b>	<b>Front</b>	<b>2</b>
<b>2</b>	<b>OBI</b>	<b>3</b>
2.1	OBI . . . . .	3
2.1.1	Images . . . . .	3
2.1.2	Bias . . . . .	3
2.1.3	Parameters . . . . .	4
2.1.4	Events . . . . .	4
2.2	Compared Parameters . . . . .	5
2.3	Aspect . . . . .	6
2.4	Star Slots . . . . .	9
2.4.1	Slot 3 . . . . .	9
2.4.2	Slot 4 . . . . .	10
2.4.3	Slot 5 . . . . .	11
2.4.4	Slot 6 . . . . .	12
2.4.5	Slot 7 . . . . .	13
2.5	FID Slots . . . . .	14
2.5.1	Slot 0 . . . . .	14
2.5.2	Slot 1 . . . . .	15
2.5.3	Slot 2 . . . . .	16
<b>3</b>	<b>Point Sources</b>	<b>17</b>
<b>A</b>	<b>Summary</b>	<b>18</b>
A.1	Status . . . . .	18
A.2	Comments . . . . .	18

# 1 Front

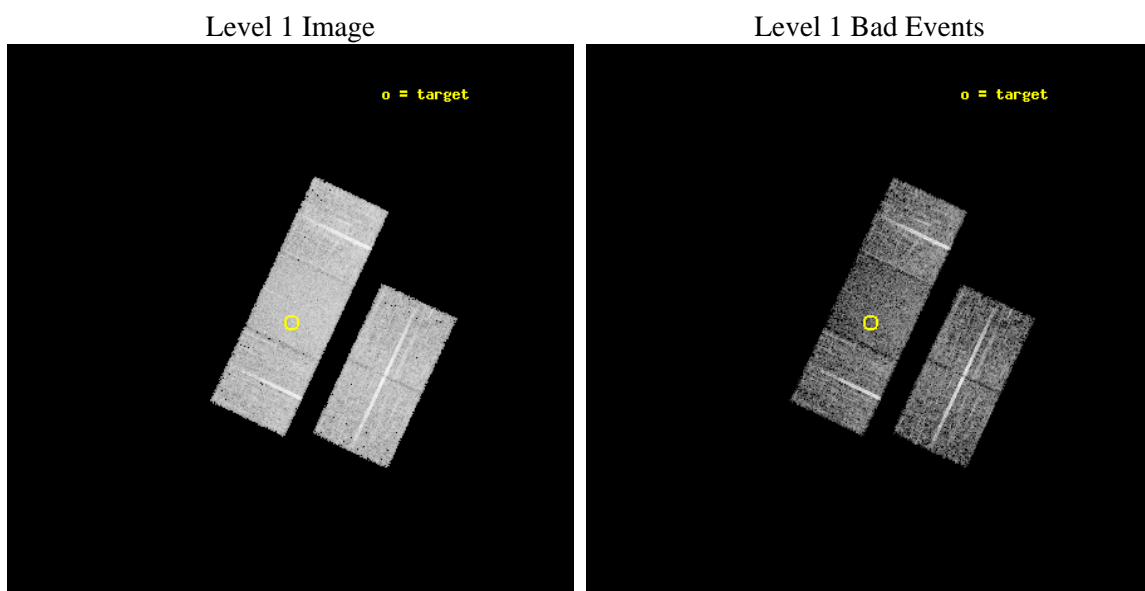
seq_num	700119	Sequence number
obs_id	814	Observation id
title	LIFTING THE SHROUD AROUND BROAD ABSORPTION LINE QSOS: AN AXAF SURVEY	&#160
observer	Dr. Paul Green	Principal investigator
object	Q0135-4001	Source name
dtcycle	0	&#160
cycle	P	events from which exps? Prim/Second/Both
ra_targ	24.30375	Observer's specified target RA
dec_targ	-39.76867	Observer's specified target Dec
ra_nom	24.307111235366	Nominal RA
dec_nom	-39.778581757265	Nominal Dec
roll_nom	295.13875864178	Nominal Roll
revision	4	Processing version of data
ontime	4968.6050325483	Sum of GTIs [s]
livetime	4905.6895638914	Livetime [s]
ontime2	4968.5640224591	Sum of GTIs [s]
ontime3	4968.4819125459	Sum of GTIs [s]
ontime6	4968.5229525492	Sum of GTIs [s]
ontime7	4968.6050325483	Sum of GTIs [s]
ontime8	4968.4409024641	Sum of GTIs [s]
l2events	32181	Number of level 2 events



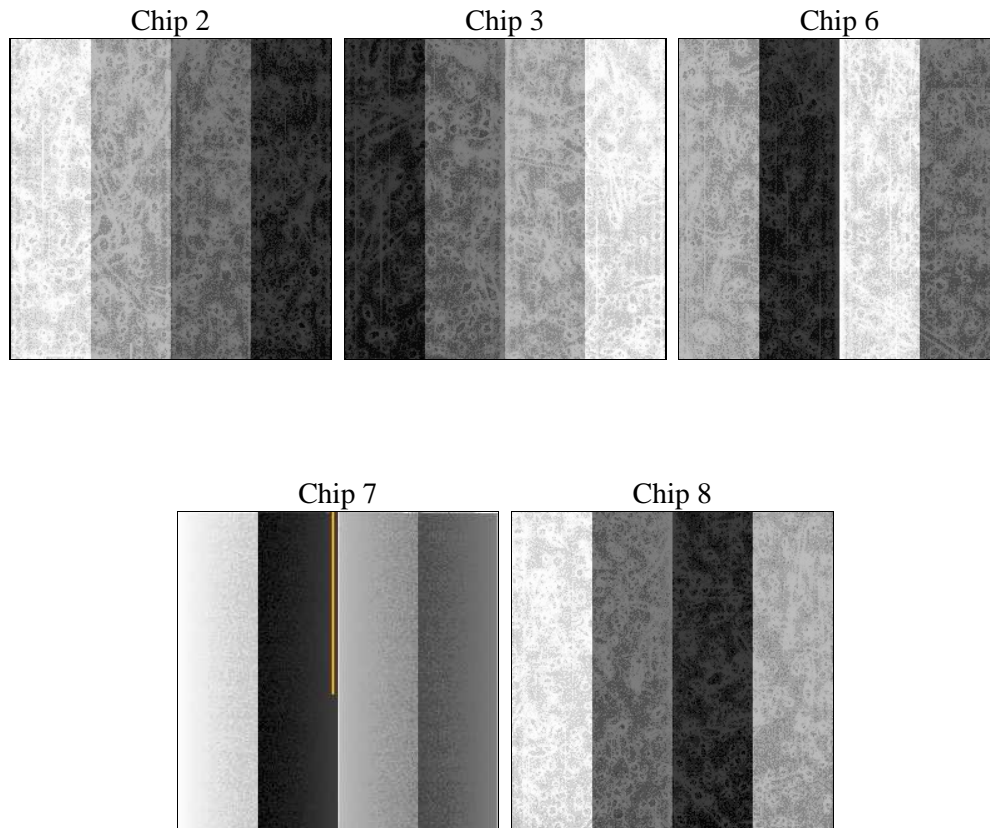
## 2 OBI

### 2.1 OBI

#### 2.1.1 Images



#### 2.1.2 Bias



### 2.1.3 Parameters

obi_num	0	Obi number	sched_exp_time	5200.000000	Scheduled observation exposure time
ascdsver	8.1.1	ASCDS version number	ontime	4968.6050325483	Sum of GTIs [s]
caldsver	4.1.4	&#160	ontime2	4968.5640224591	Sum of GTIs [s]
date	2009-11-29T22:13:04	Date and time of file creation	ontime3	4968.4819125459	Sum of GTIs [s]
revision	3	Processing version of data	ontime6	4968.5229525492	Sum of GTIs [s]
			ontime7	4968.6050325483	Sum of GTIs [s]
			ontime8	4968.4409024641	Sum of GTIs [s]
			l1events	221538	Number of level 1 events

### 2.1.4 Events

	ccd 2	ccd 3	ccd 6	ccd 7	ccd 8
level 1 events	40621	40886	41360	45637	53034
rejected events	36918	36942	37318	28010	44389
rejected %	90%	90%	90%	61%	83%

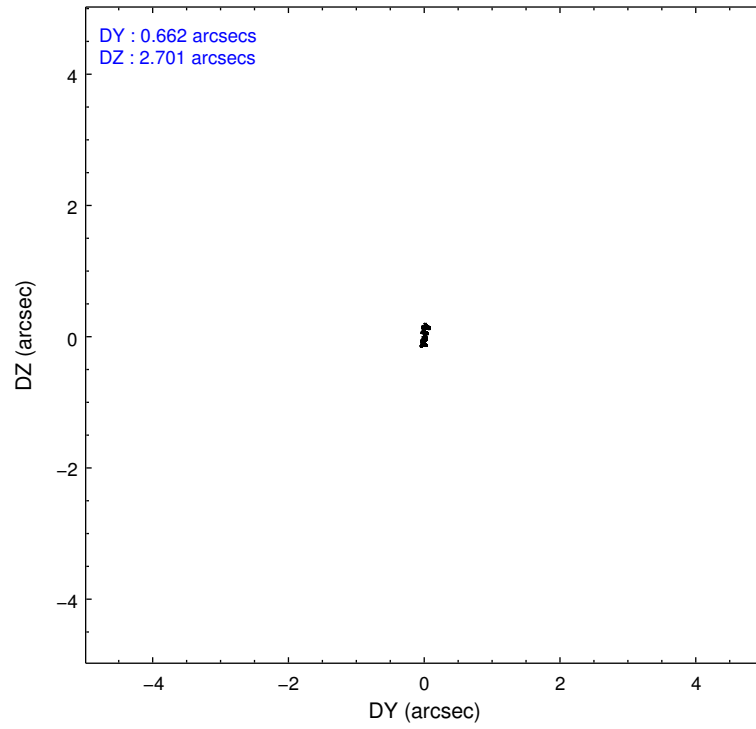
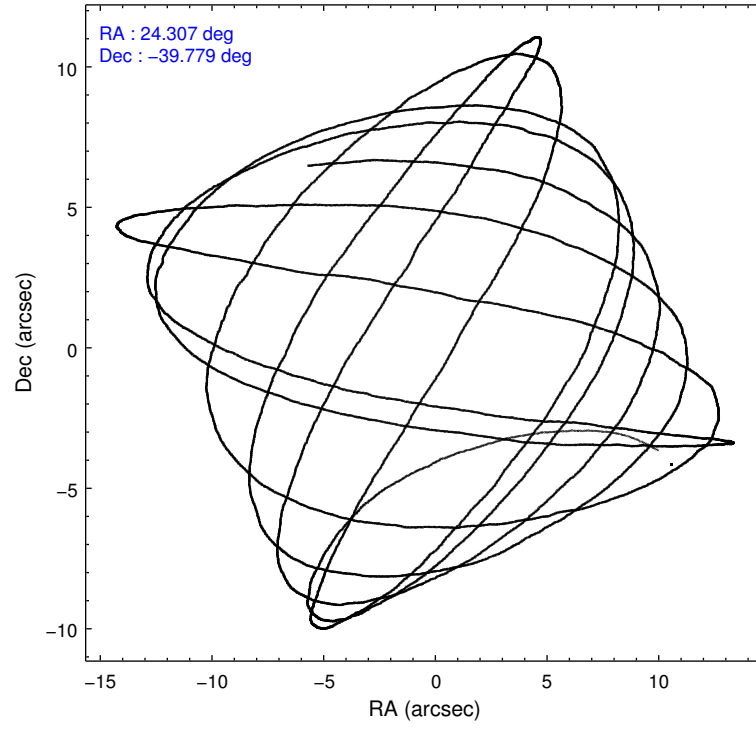
	ccd 2	ccd 3	ccd 6	ccd 7	ccd 8
grade 0 events	767	837	821	1147	2042
	1%	2%	1%	2%	3%
grade 1 events	9	15	3	32	19
	0%	0%	0%	0%	0%
grade 2 events	1463	1564	1562	3655	2706
	3%	3%	3%	8%	5%
grade 3 events	274	272	282	1035	723
	0%	0%	0%	2%	1%
grade 4 events	245	243	242	967	669
	0%	0%	0%	2%	1%
grade 5 events	711	819	830	2681	1163
	1%	2%	2%	5%	2%
grade 6 events	964	1033	1144	10838	2511
	2%	2%	2%	23%	4%
grade 7 events	36188	36103	36476	25282	43201
	89%	88%	88%	55%	81%

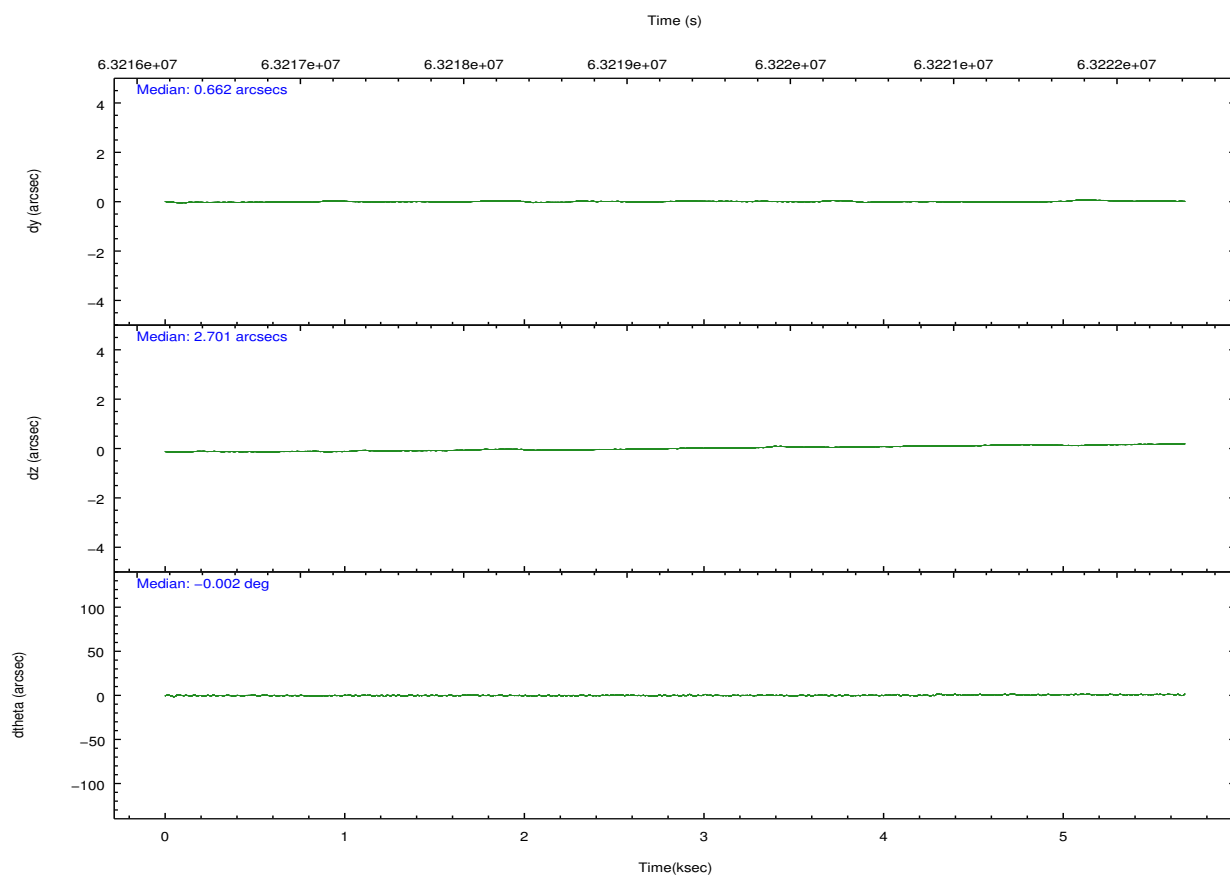
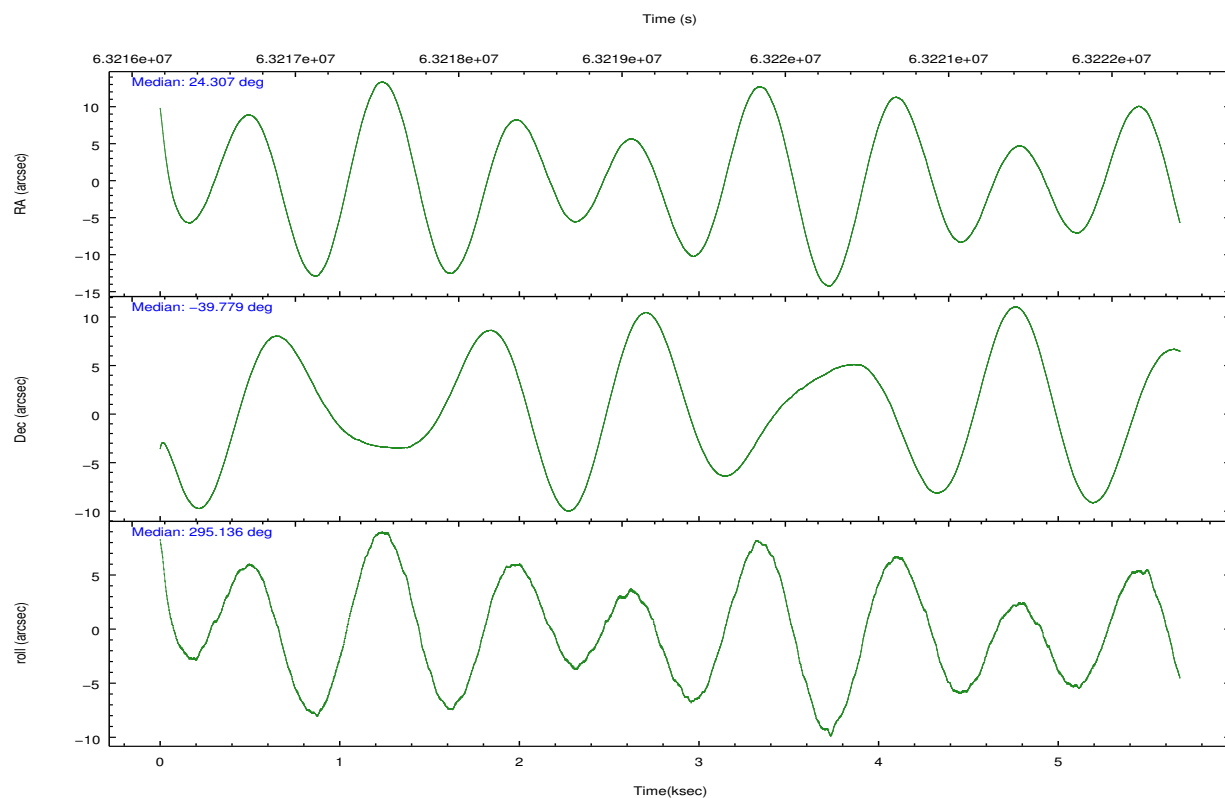


## 2.2 Compared Parameters

Parameter	Planned	Actual	Parameter	Planned	Actual
Instrument	ACIS	ACIS	Obspar format version number	6	6
Detector	ACIS-23678	ACIS-23678	Obspar file type	PREDICTED	ACTUAL
Grating	NONE	NONE	Obspar update status	NONE	UPDATED
Data mode	FAINT	FAINT	Number of optional ACIS chips dropped	0	0
Observation mode	POINTING	POINTING	On-chip summing requested	N	N
Pointing RA	24.277675	24.30711123536645	Subarray requested	NONE	NONE
Pointing Dec	-39.762741	-39.7785817572652	Alternating exposures requested	N	N
Pointing Roll	294.963294	295.138758641781	Primary exposure time	0.000000	3.2
SIM focus pos (mm)	-0.684267	-0.6828225247311905			
SIM defocus (mm)	0	0.001444936568705701			
SIM translation stage pos (mm)	-190.132523	-190.145094680475			
SIM translation stage offset (mm)	0	0.01257209746719923			
Observation start time	63216933.184000	63215985.303105			
Observation start date	2000-01-02T16:14:29	2000-01-02T15:59:45			
Observation end time	63222133.184000	63222672.915848			
Observation end date	2000-01-02T17:41:09	2000-01-02T17:51:12			
Read mode	TIMED	TIMED			

## 2.3 Aspect



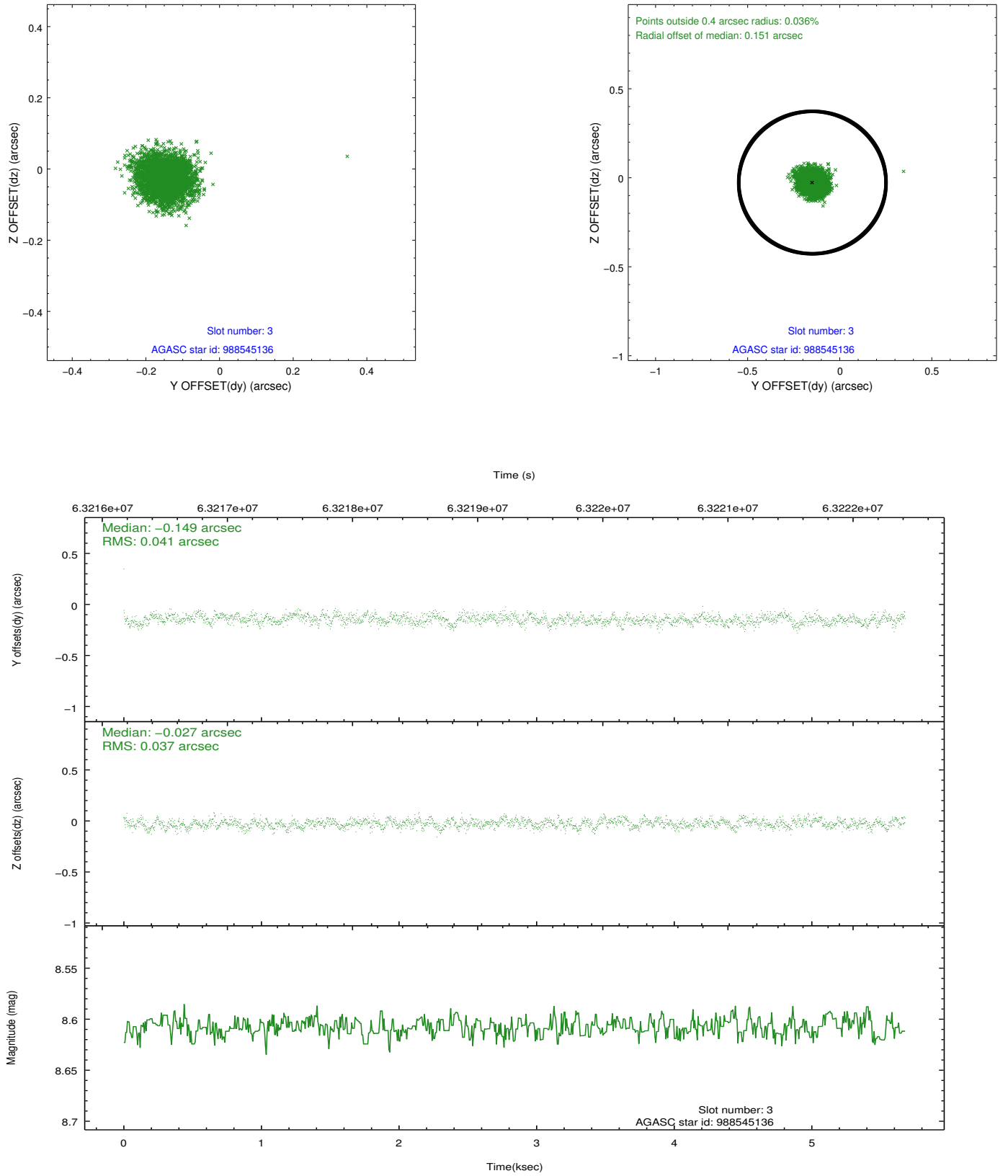


Slot Statistics

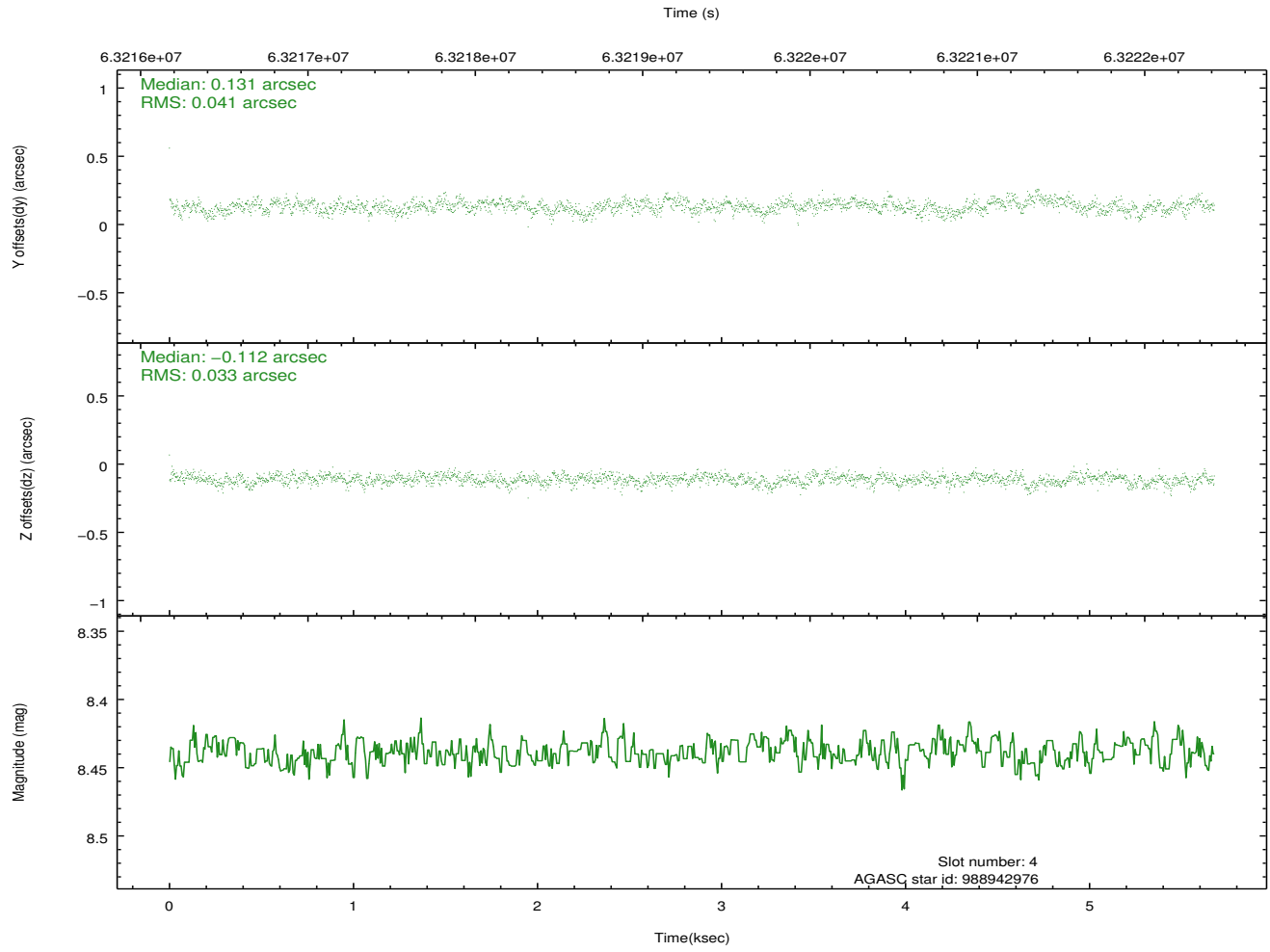
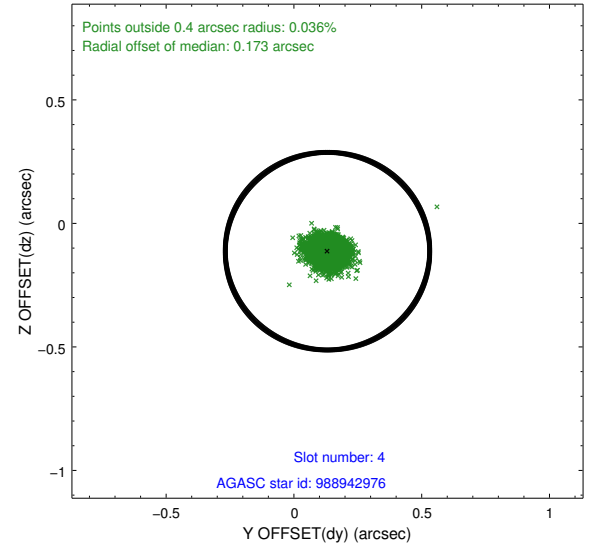
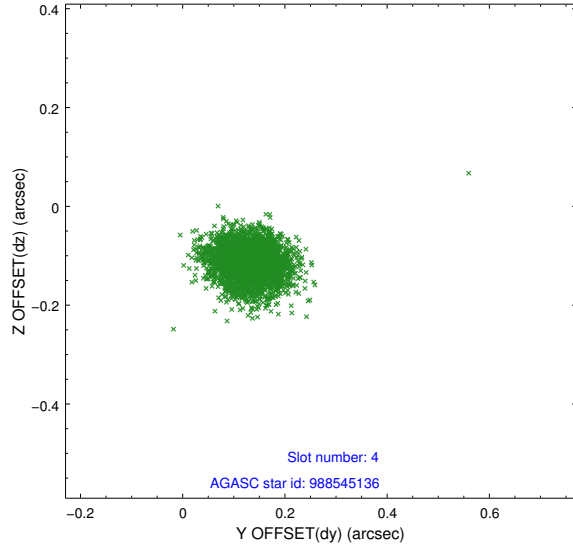
slot	status	id	mag	n_pts	med_dy	med_dz	dr1	dr2	ra	dec	mean_y	mean_z
0	FID	ACIS-S-2	7.12	2771	-0.007	-0.011	0.009	0.015	0.000000	0.000000	-753.30	-1723.64
1	FID	ACIS-S-4	7.22	2771	0.029	0.007	0.011	0.019	0.000000	0.000000	2159.86	184.32
2	FID	ACIS-S-5	7.24	2771	-0.053	0.014	0.010	0.018	0.000000	0.000000	-1805.55	178.62
3	GUIDE	988545136	8.61	2770	-0.149	-0.027	0.058	0.093	24.173793	-39.192925	-1982.03	603.27
4	GUIDE	988942976	8.44	2771	0.131	-0.112	0.056	0.090	24.327465	-40.177344	1410.43	-505.16
5	GUIDE	988942176	8.55	2770	0.048	0.241	0.059	0.097	24.189923	-40.148824	1158.88	-804.99
6	GUIDE	988944224	9.44	2770	0.035	-0.165	0.099	0.158	24.280030	-40.386950	2040.48	-942.46
7	GUIDE	988548640	9.56	2768	-0.065	0.070	0.113	0.181	24.275976	-39.050712	-2325.22	1077.64

## 2.4 Star Slots

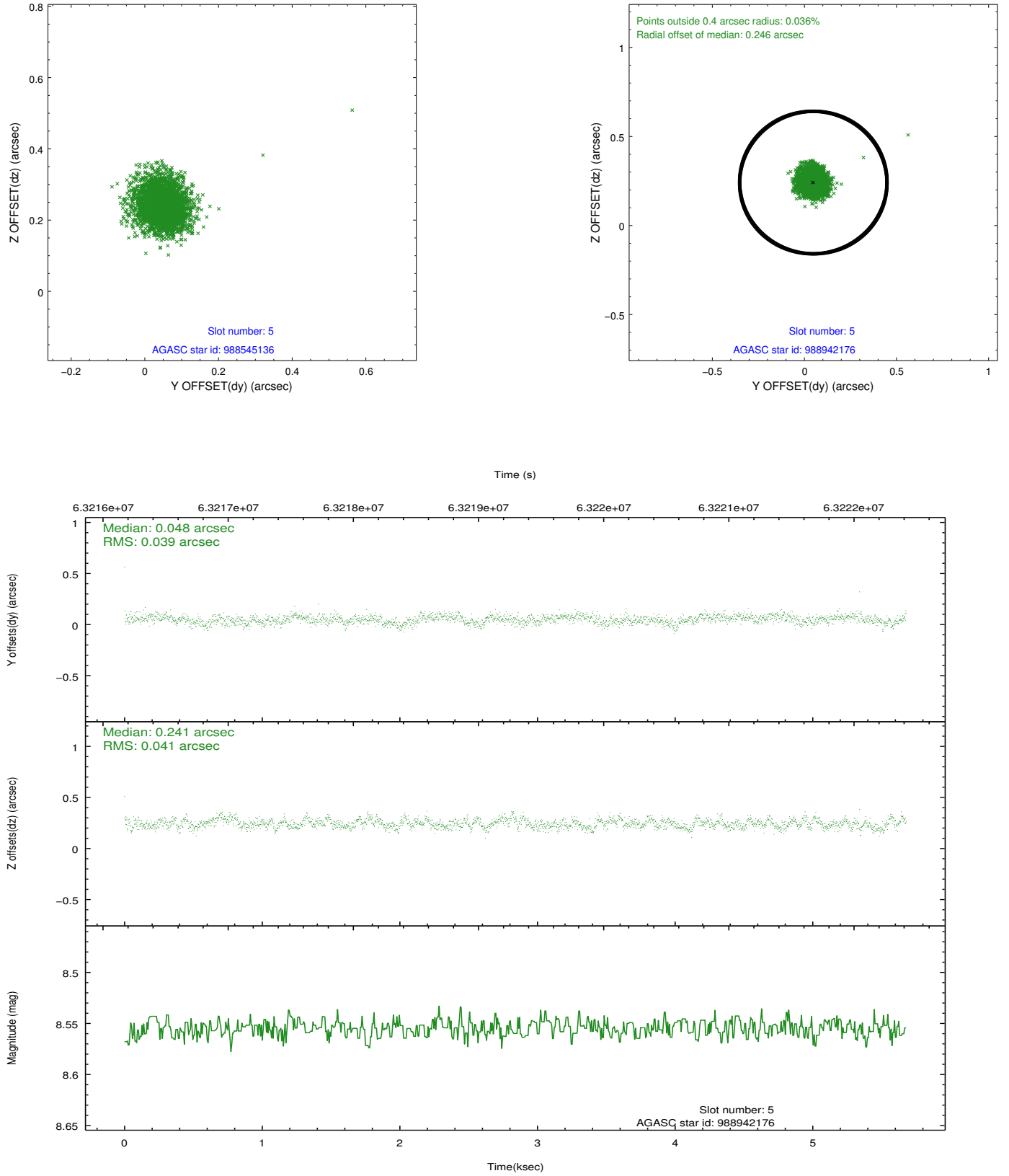
### 2.4.1 Slot 3



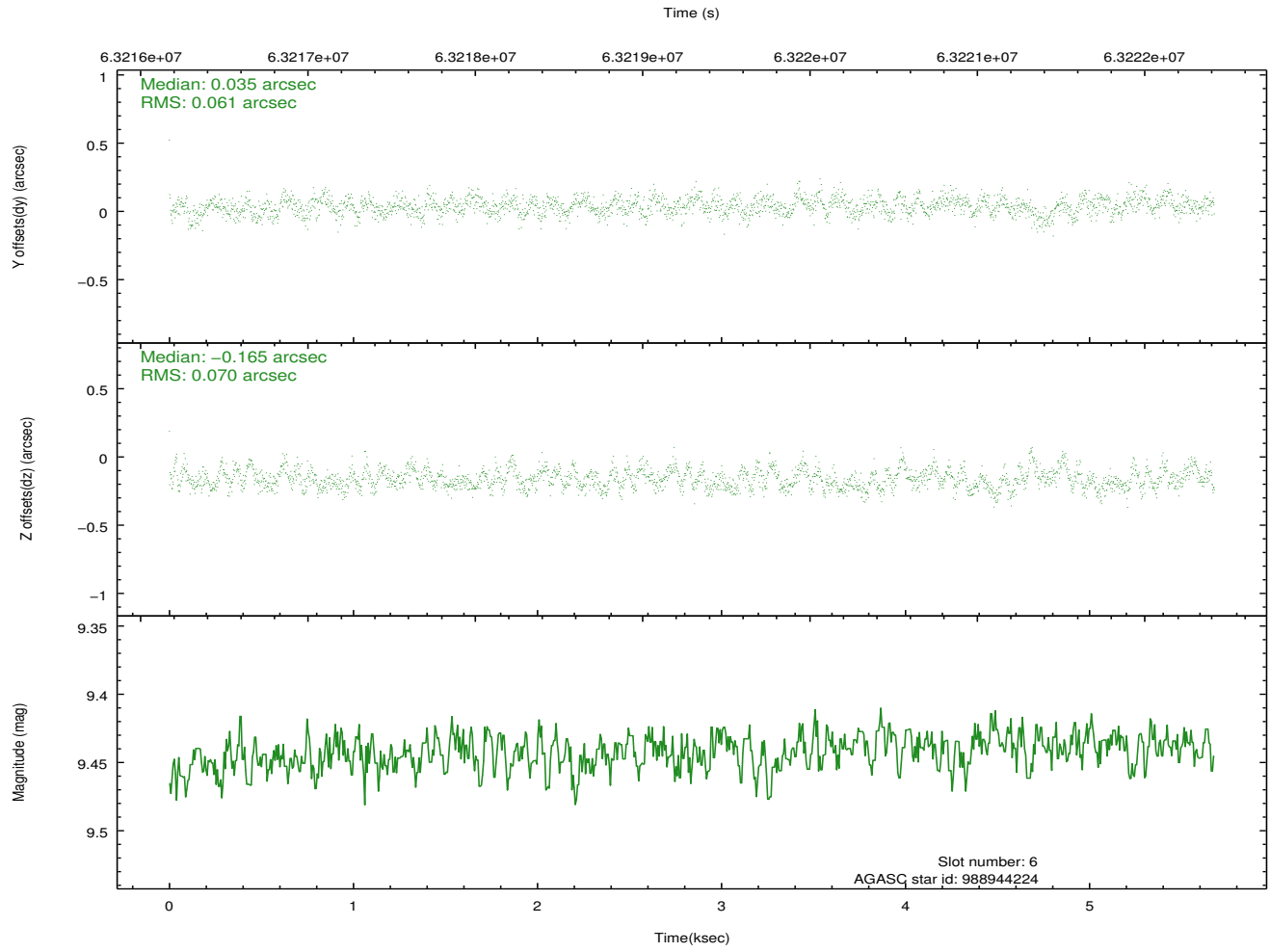
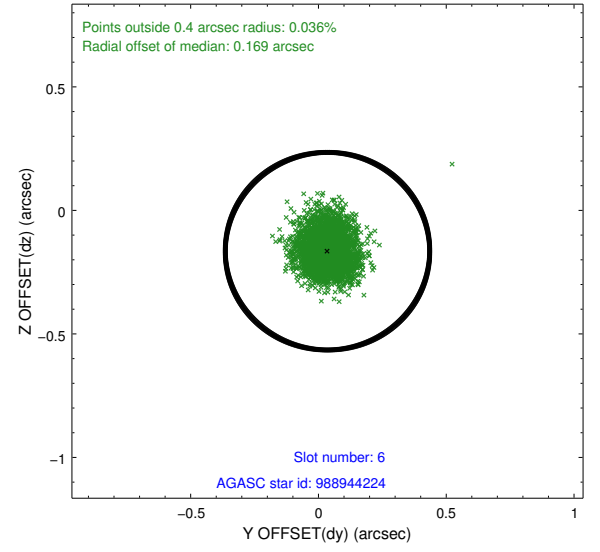
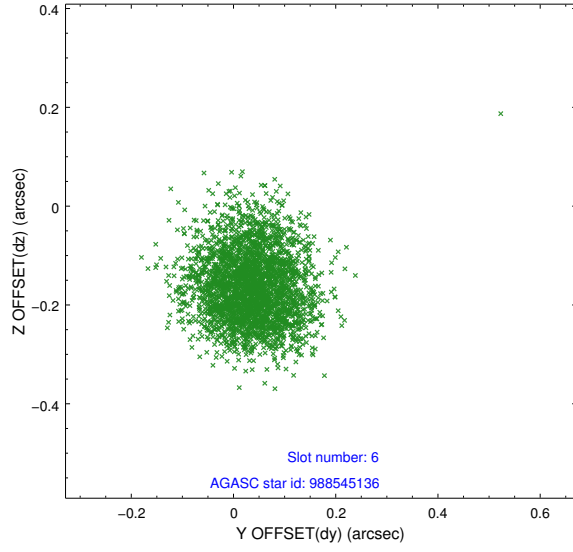
## 2.4.2 Slot 4



### 2.4.3 Slot 5

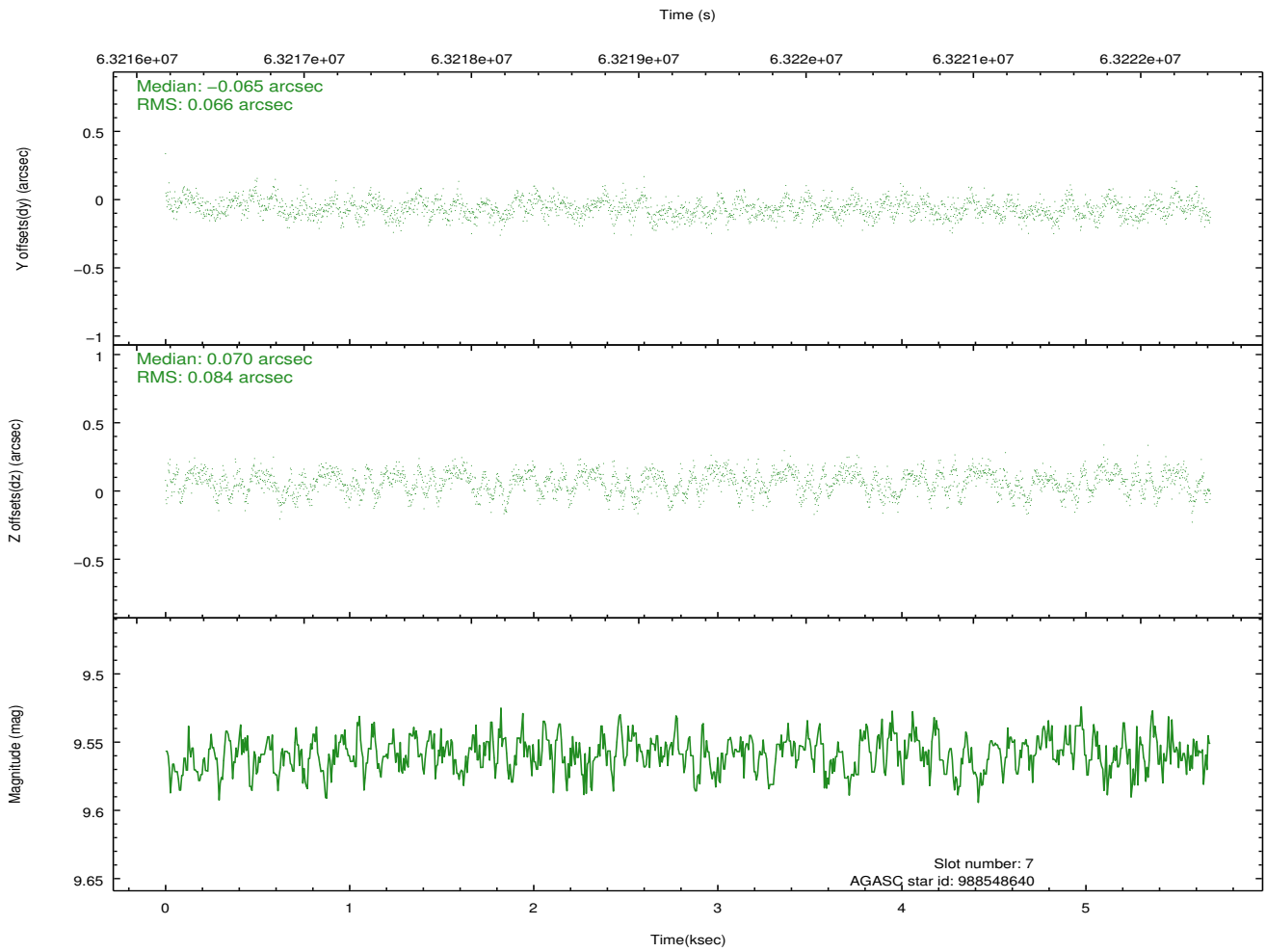
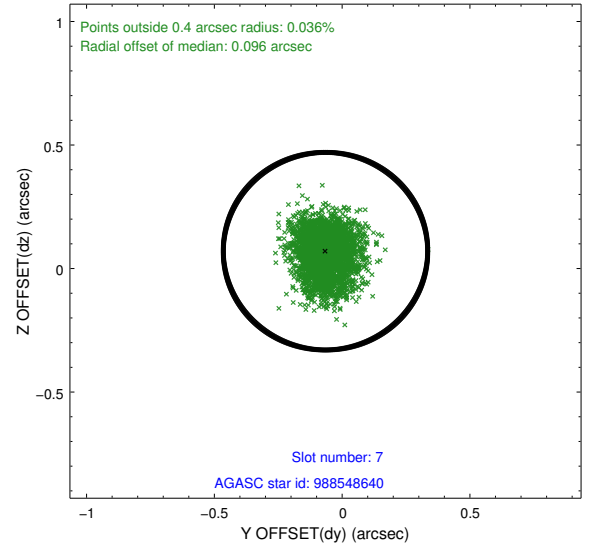
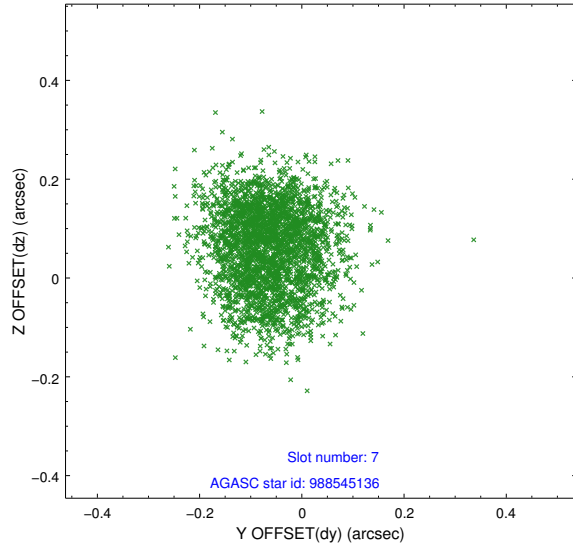


## 2.4.4 Slot 6



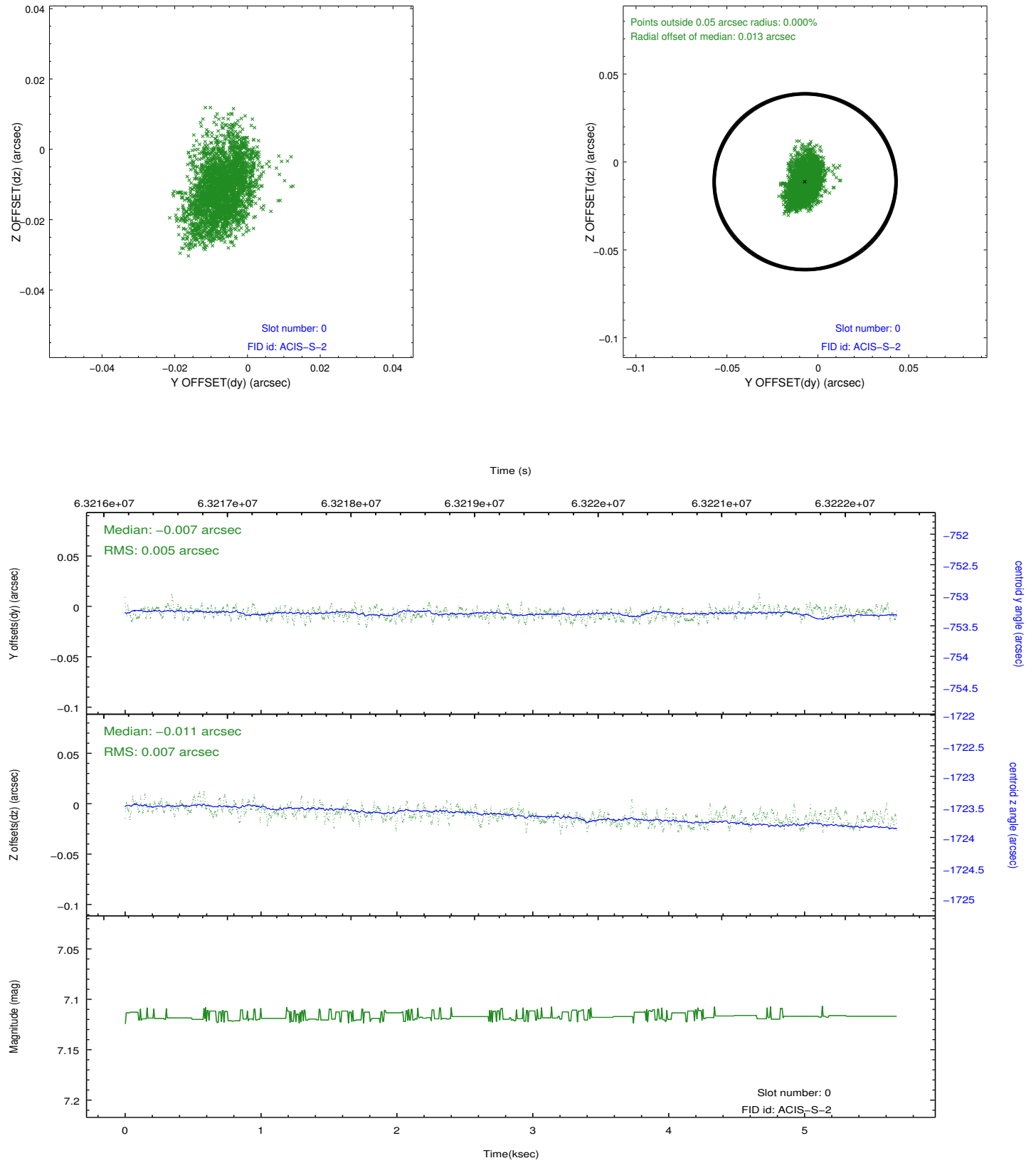


## 2.4.5 Slot 7

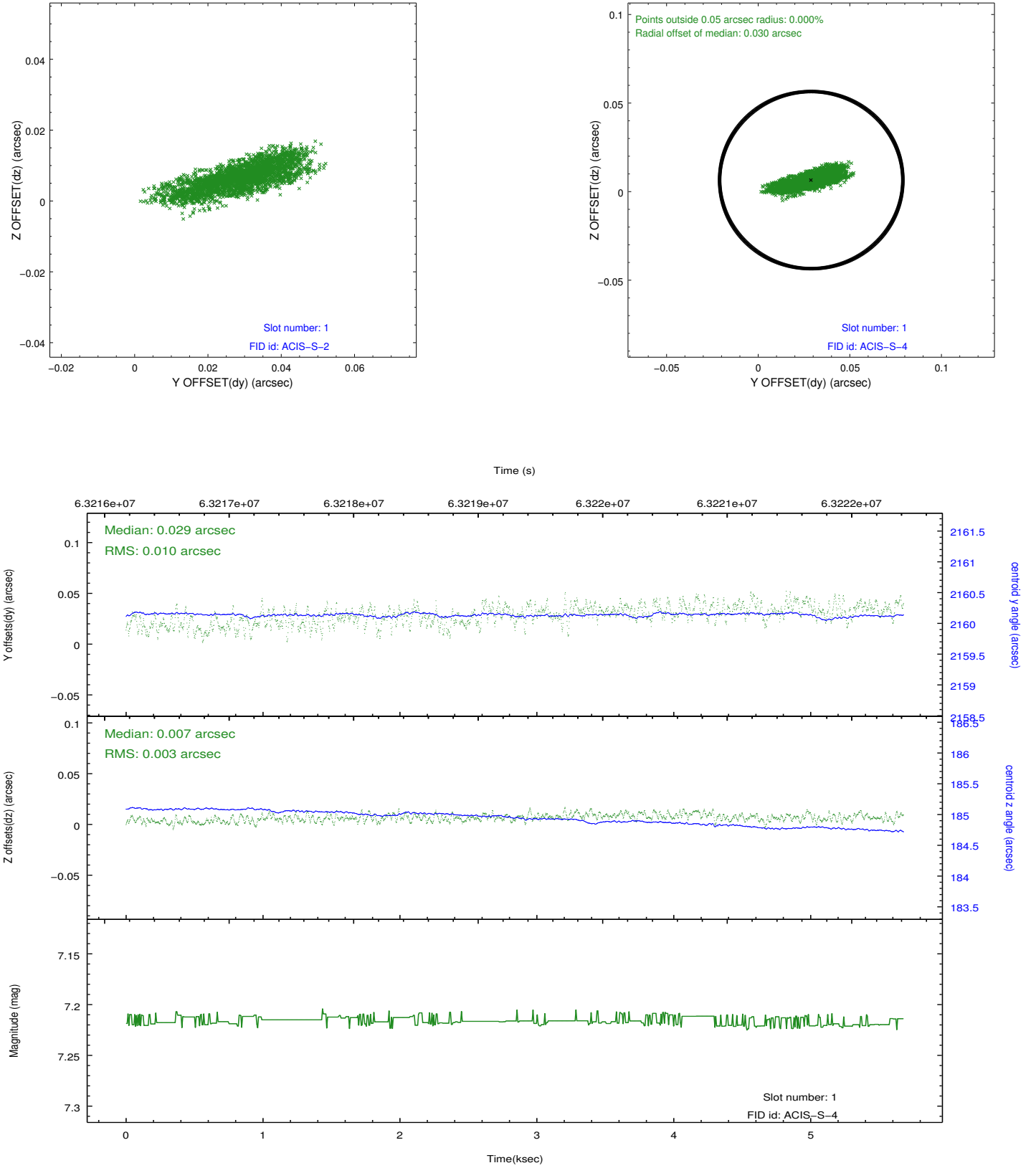


## 2.5 FID Slots

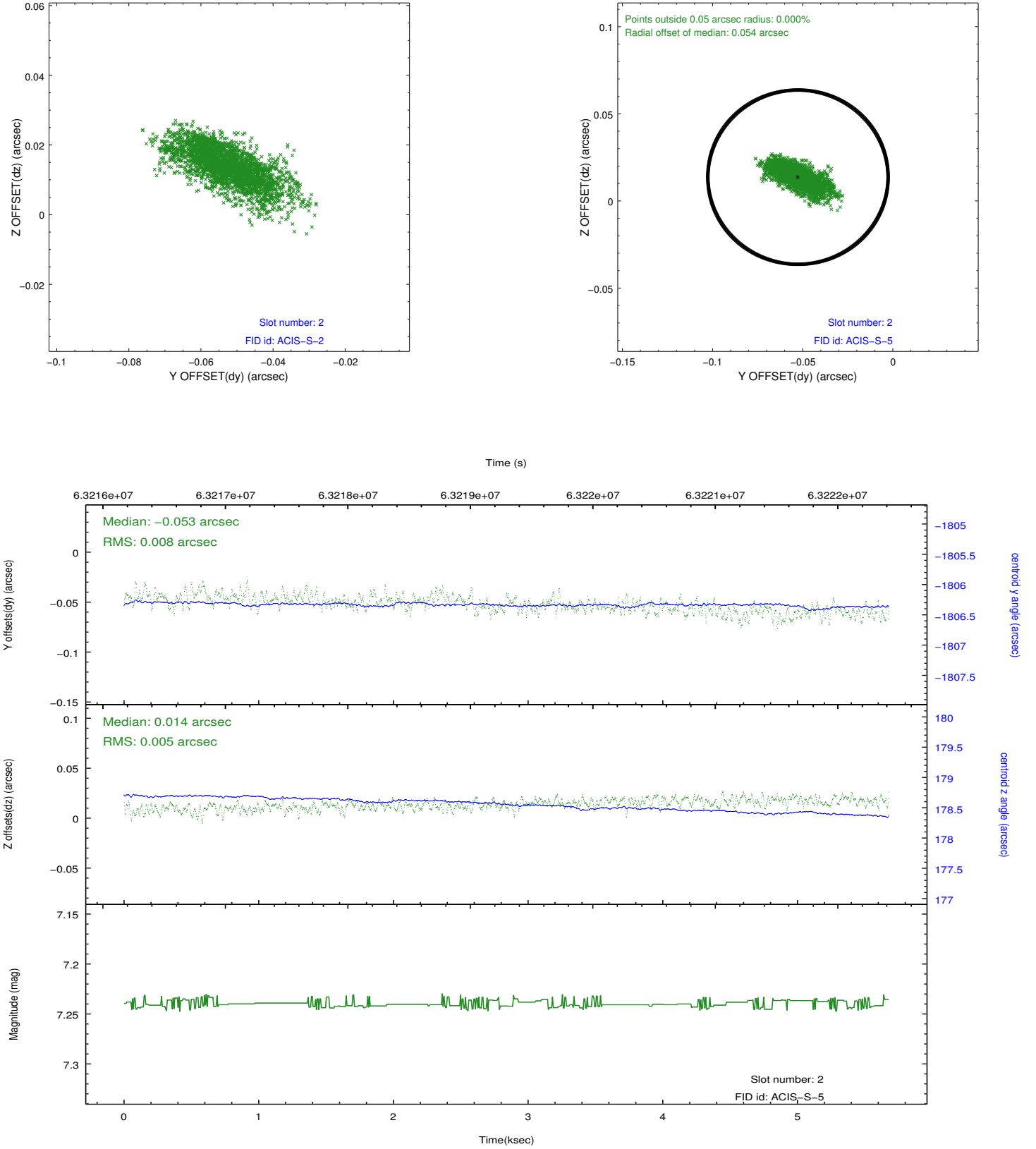
### 2.5.1 Slot 0



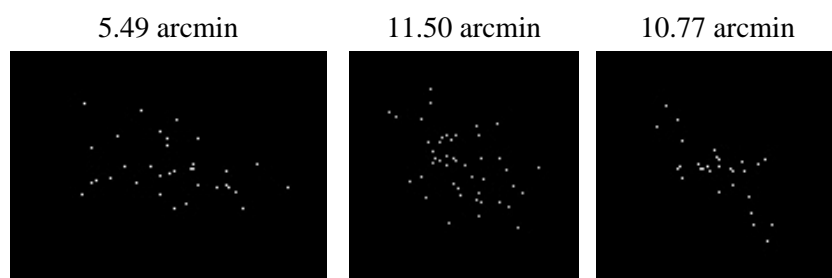
## 2.5.2 Slot 1



### 2.5.3 Slot 2



### 3 Point Sources



# A Summary

## A.1 Status

V&V Scientist	Beth Sundheim
V&V Date (YYYY-MM-DD)	2009.11.30
V&V Edition	1
V&V Disposition and Status	OK
V&V Charge Time	4.969

## A.2 Comments

This observation was acquired with the focal plane temperature raised from -120C to -110C, for attempted recalibration of ACIS for the 1999-09-16 through 2000-01-28 period. This reprocessing of the data applies no CTI correction because none is available for that temperature.