

V&V Reference Report

L2 ASCDS Version : 7.6.10

Observation 812 - L2 Version 001
Chandra X-Ray Center

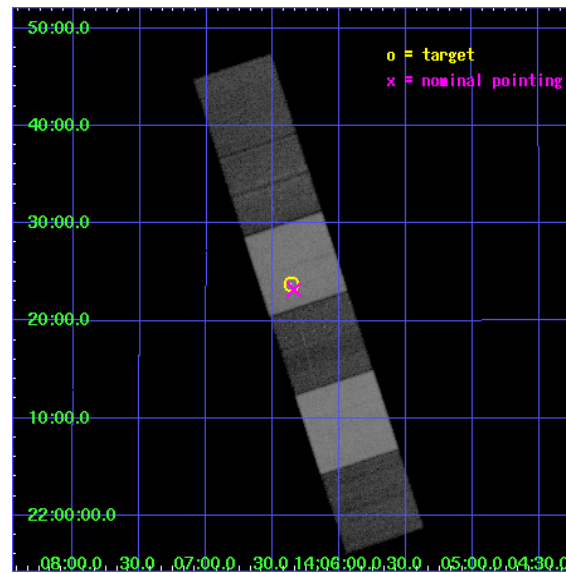
L2 Processing Date : May 31 2007

Contents

1	Front	2
2	OBI	3
2.1	OBI	3
2.1.1	Images	3
2.1.2	Bias	3
2.1.3	Parameters	4
2.1.4	Events	4
2.2	Compared Parameters	5
2.3	Aspect	6
2.4	Star Slots	9
2.4.1	Slot 3	9
2.4.2	Slot 4	10
2.4.3	Slot 5	11
2.4.4	Slot 6	12
2.4.5	Slot 7	13
2.5	FID Slots	14
2.5.1	Slot 0	14
2.5.2	Slot 1	15
2.5.3	Slot 2	16
3	Gratings	17
3.1	HEG Arm	17
3.2	MEG Arm	19
A	Summary	21
A.1	Status	21
A.2	Comments	21

1 Front

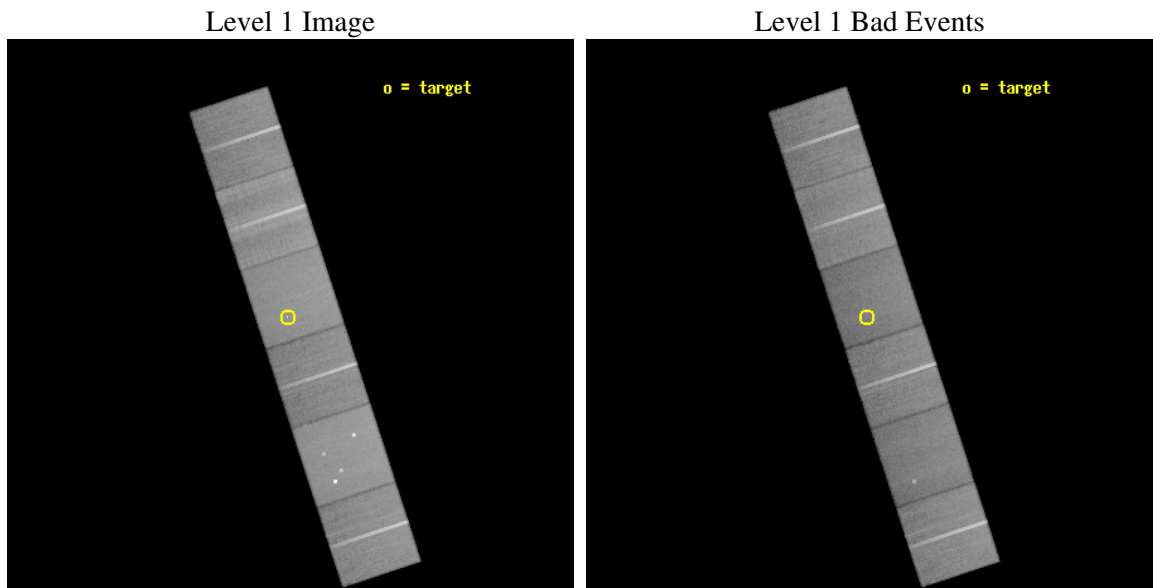
seq_num	700117
obs_id	812
title	PROBING RELATIVISTIC OUTFLOWS IN EXTREME NLS1
observer	Professor Kirpal Nandra
object	PG 1404+226
dtcycle	0
cycle	P
ra_targ	211.590833
dec_targ	22.396111
ra_nom	211.58569300909
dec_nom	22.387255775582
roll_nom	251.83100317451
revision	3
ontime	80134.277164027
livetime	79119.568695507
ontime4	80137.518154174
ontime5	80137.518124253
ontime6	80137.518134251
ontime7	80134.277164027
ontime8	80137.518184096
ontime9	80140.759144321
l2events	656496



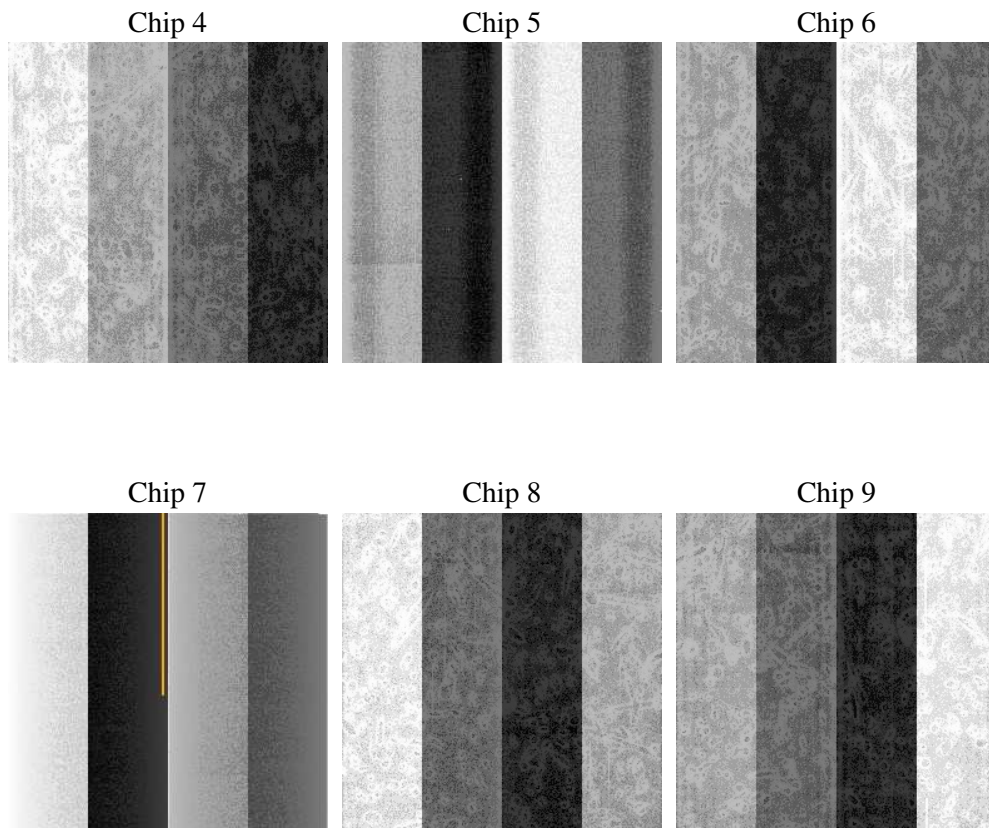
2 OBI

2.1 OBI

2.1.1 Images



2.1.2 Bias



2.1.3 Parameters

obi_num	2
ascdsver	7.6.10
caldsver	3.4.0
date	2007-05-31T21:50:55
revision	3

sched_exp_time	80000.000000
ontime	80134.277164027
ontime4	80137.518154174
ontime5	80137.518124253
ontime6	80137.518134251
ontime7	80134.277164027
ontime8	80137.518184096
ontime9	80140.759144321
l1events	3120650

2.1.4 Events

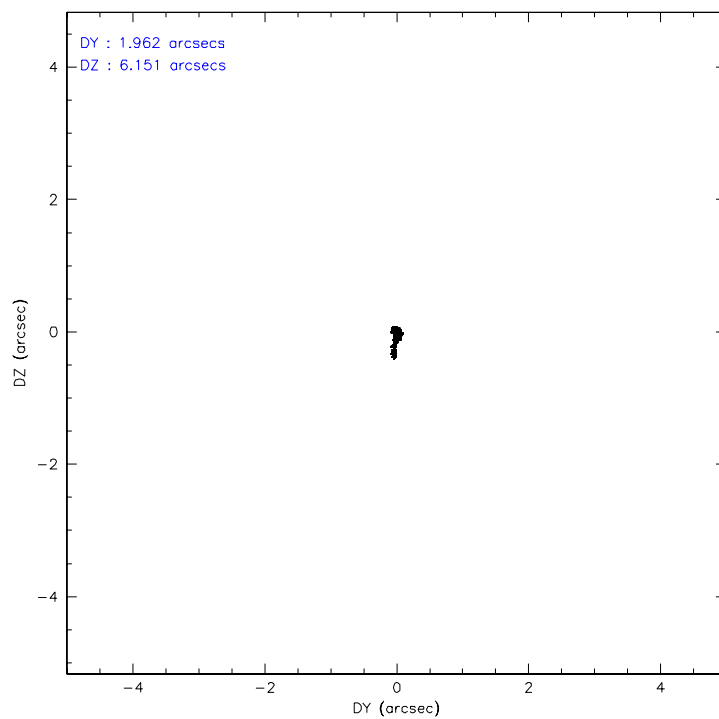
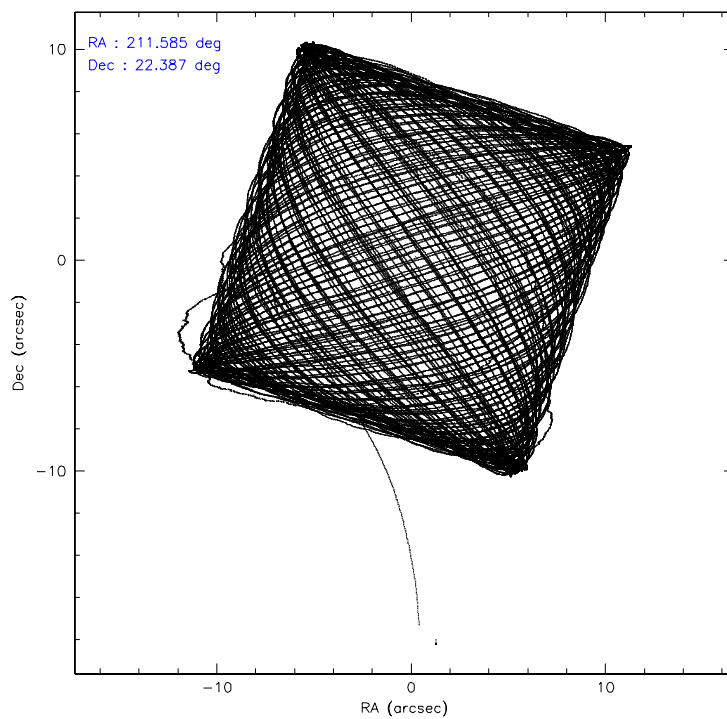
	ccd 4	ccd 5	ccd 6	ccd 7	ccd 8	ccd 9
level 1 events	498906	600962	447415	535590	596800	440977
rejected events	444171	321998	396529	309518	451051	389260
rejected %	89%	53%	88%	57%	75%	88%

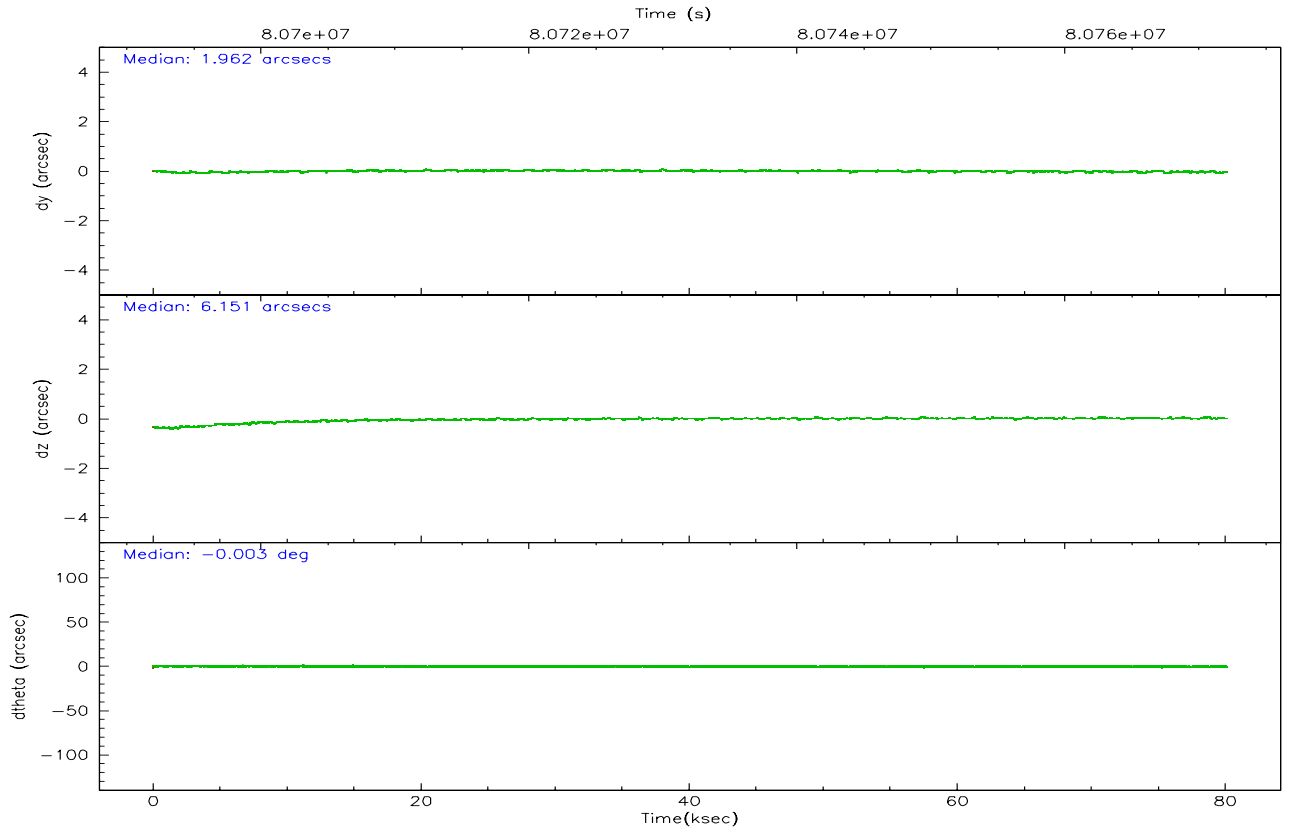
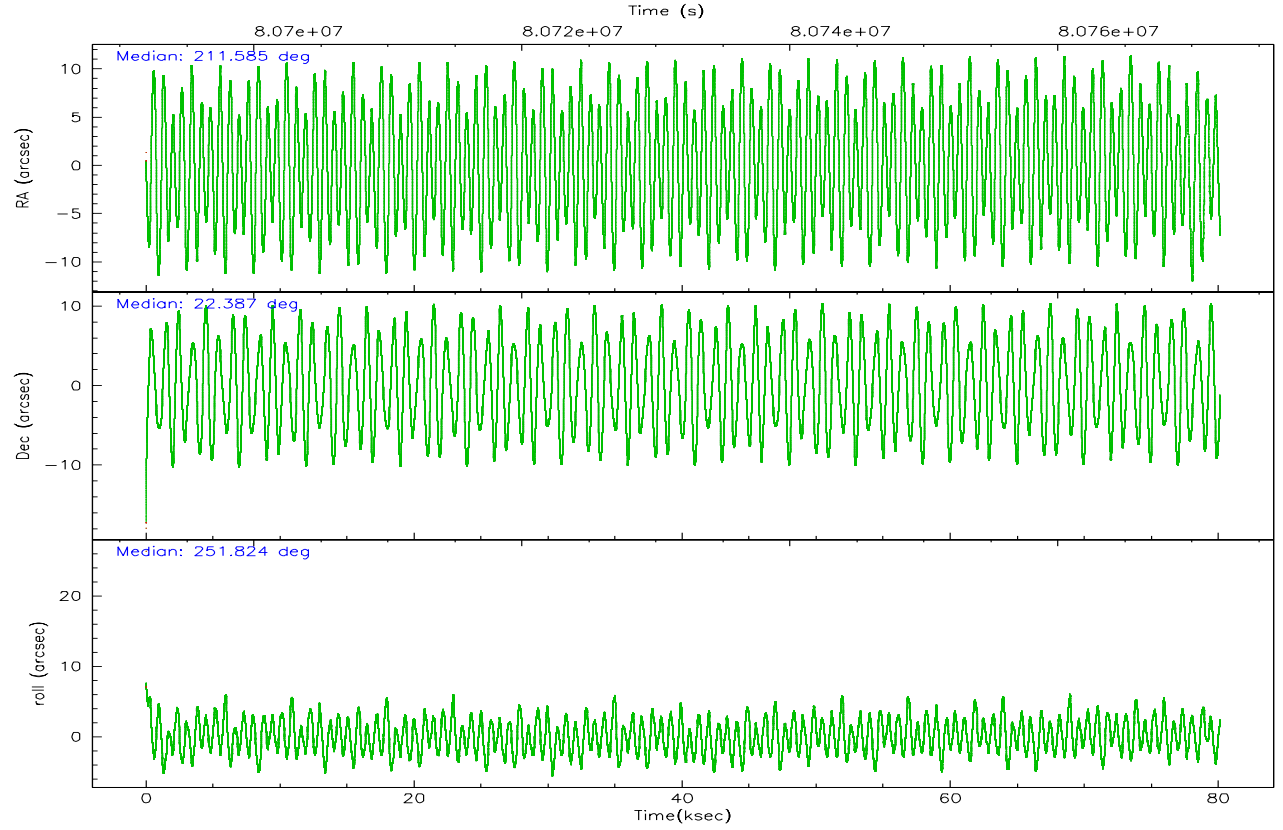
	ccd 4	ccd 5	ccd 6	ccd 7	ccd 8	ccd 9
grade 0 events	22575	36365	20748	21266	43795	21088
	4%	6%	4%	3%	7%	4%
grade 1 events	249	2275	175	520	381	165
	0%	0%	0%	0%	0%	0%
grade 2 events	13414	79460	10328	44821	28413	10486
	2%	13%	2%	8%	4%	2%
grade 3 events	4860	12101	5051	20917	18871	5126
	0%	2%	1%	3%	3%	1%
grade 4 events	4799	11745	5043	20554	17078	4977
	0%	1%	1%	3%	2%	1%
grade 5 events	14949	45294	17669	51033	22482	17756
	2%	7%	3%	9%	3%	4%
grade 6 events	9160	139626	9776	118797	37815	10080
	1%	23%	2%	22%	6%	2%
grade 7 events	428900	274096	378625	257682	427965	371299
	85%	45%	84%	48%	71%	84%

2.2 Compared Parameters

Parameter	Planned	Actual	Parameter	Planned	Actual
Instrument	ACIS	ACIS	Obspar format version number	6	6
Detector	ACIS-456789	ACIS-456789	Obspar file type	PREDICTED	ACTUAL
Grating	HETG	HETG	Obspar update status	NONE	UPDATED
Data mode	FAINT	FAINT	Number of optional ACIS chips dropped	0	0
Observation mode	POINTING	POINTING	On-chip summing requested	N	N
Pointing RA	211.579431	211.5856930090892	Subarray requested	NONE	NONE
Pointing Dec	22.414116	22.38725577558249	Alternating exposures requested	N	N
Pointing Roll	251.676737	251.8310031745095	Primary exposure time	3.200000	3.2
SIM focus pos (mm)	-0.684267	-0.6828225247311905			
SIM defocus (mm)	0	0.001444936568705701			
SIM translation stage pos (mm)	-187.132523	-187.1228876879999			
SIM translation stage offset (mm)	-3	-3.009634895007935			
Observation start time	80692101.184000	80690914.772246			
Observation start date	2000-07-22T22:27:17	2000-07-22T22:08:34			
Observation end time	80772101.184000	80772929.637795			
Observation end date	2000-07-23T20:40:37	2000-07-23T20:55:29			
Read mode	TIMED	TIMED			

2.3 Aspect



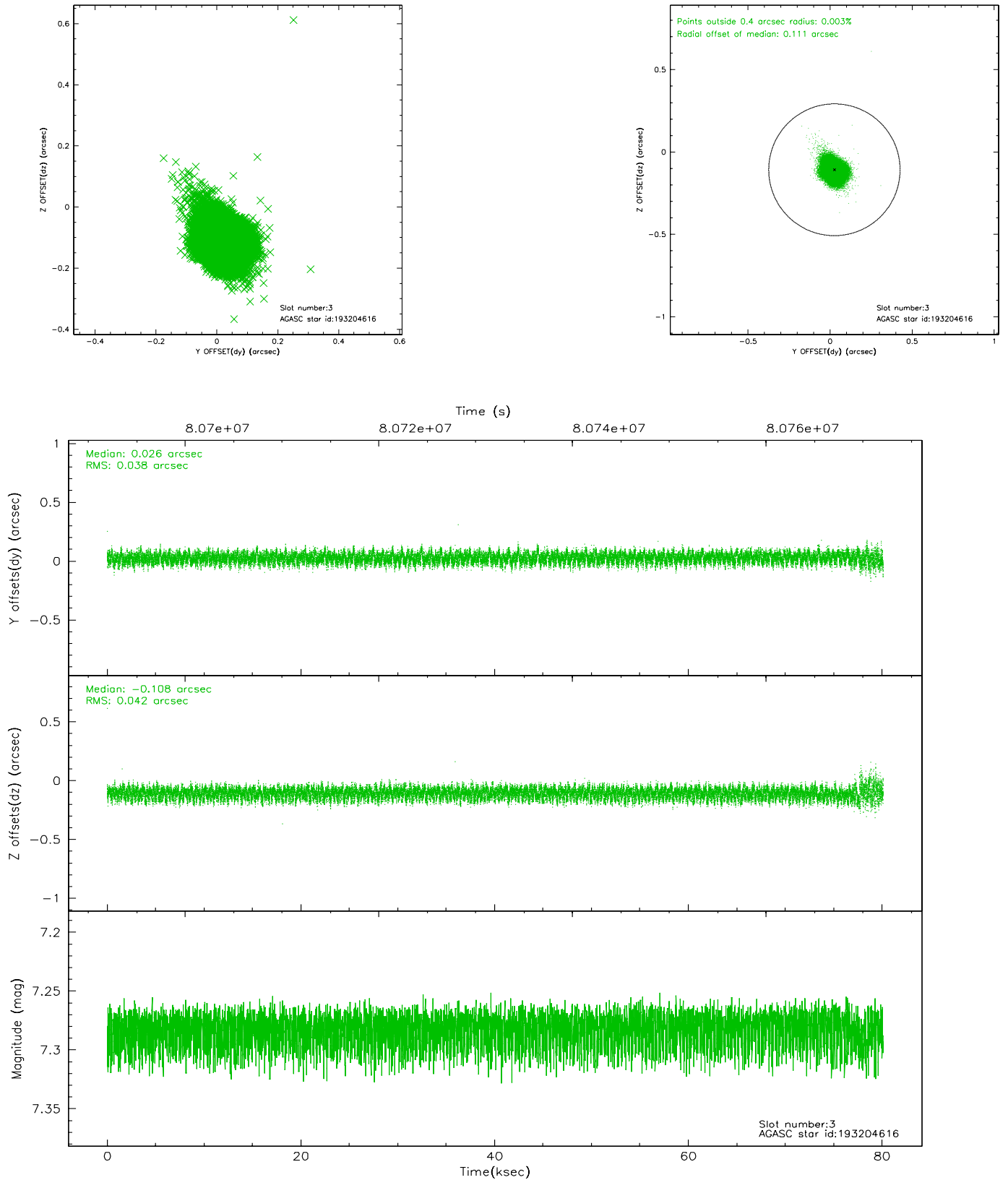


Slot Statistics

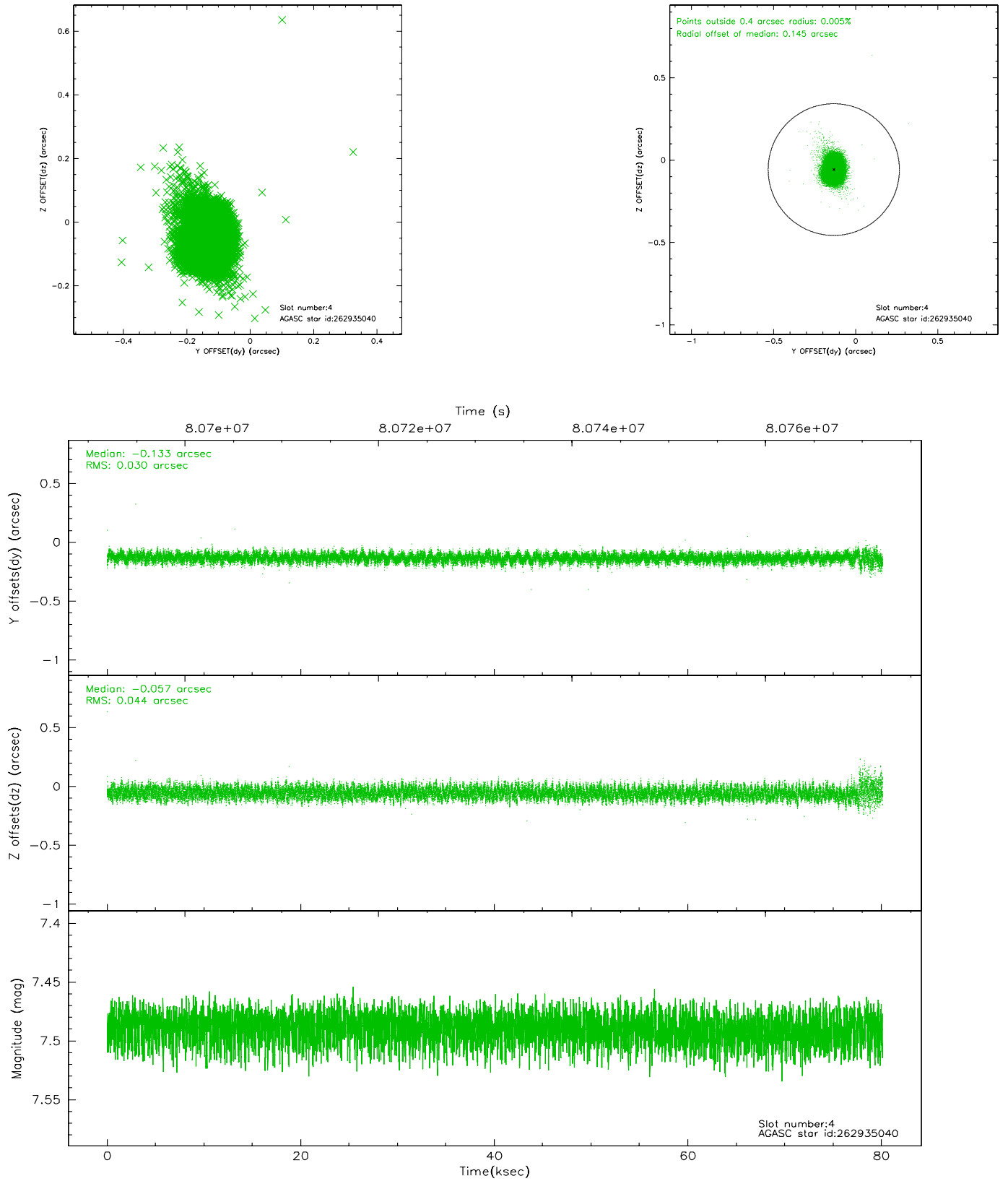
slot	status	id	mag	n_pts	med_dy	med_dz	dr1	dr2	ra	dec	mean_y	mean_z
0	FID	ACIS-S-2	7.09	19545	-0.021	-0.039	0.006	0.010	0.000000	0.000000	-754.42	-1789.42
1	FID	ACIS-S-4	7.19	19543	-0.060	0.020	0.005	0.009	0.000000	0.000000	2158.88	119.14
2	FID	ACIS-S-5	7.23	19543	0.050	0.027	0.006	0.010	0.000000	0.000000	-1807.25	112.80
3	GUIDE	193204616	7.28	39085	0.026	-0.108	0.061	0.093	211.556472	22.167699	866.02	207.13
4	GUIDE	262935040	7.49	39086	-0.133	-0.057	0.055	0.090	211.422194	22.731013	-919.24	-853.64
5	GUIDE	262939080	8.32	39080	-0.156	0.150	0.055	0.092	212.074376	22.563038	-1029.33	1393.52
6	GUIDE	193207200	8.94	39076	0.216	-0.134	0.095	0.158	210.740322	22.042629	2142.81	-2239.05
7	GUIDE	193204624	9.58	39072	0.045	0.150	0.093	0.152	211.841887	22.462558	-440.95	774.73

2.4 Star Slots

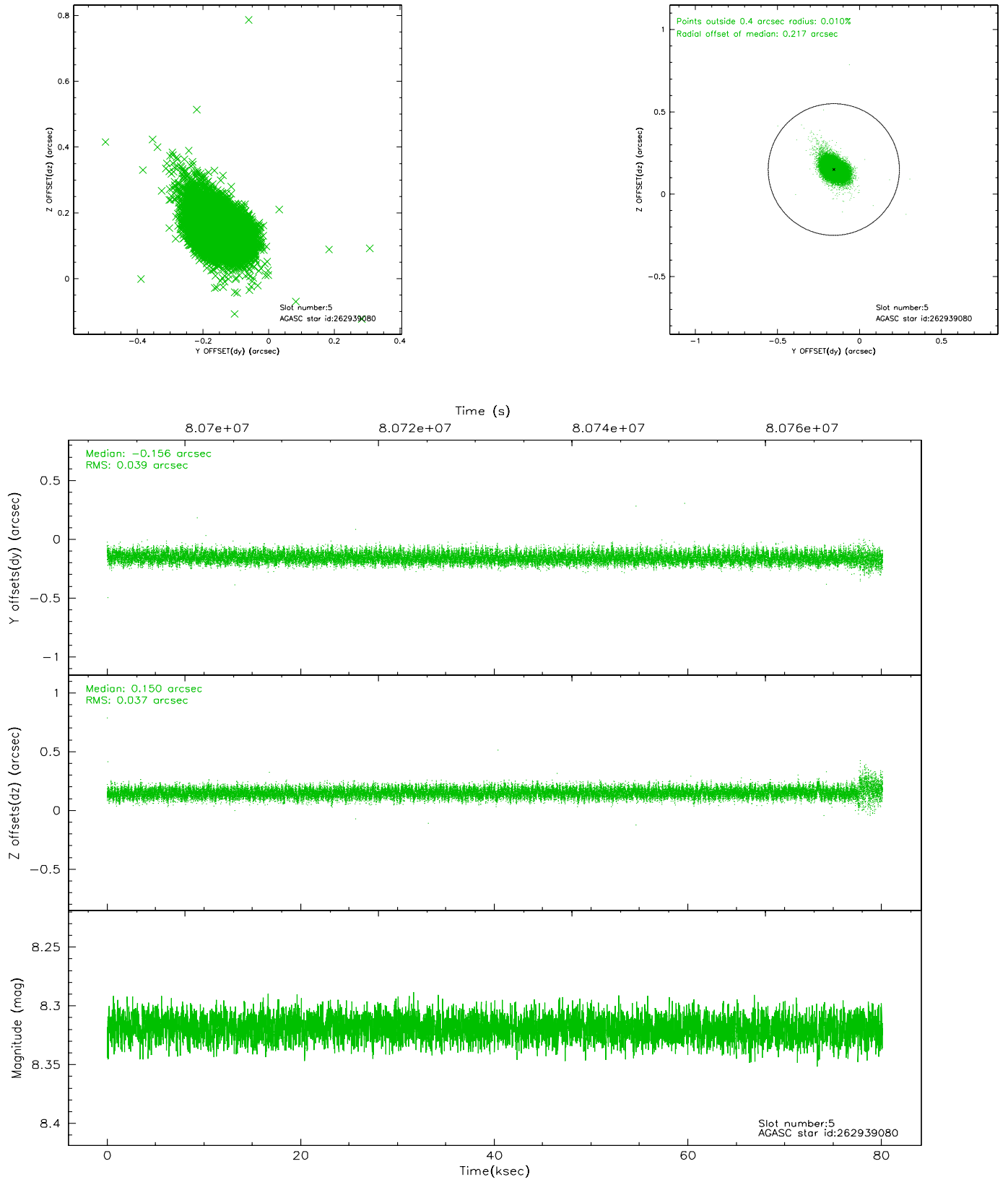
2.4.1 Slot 3



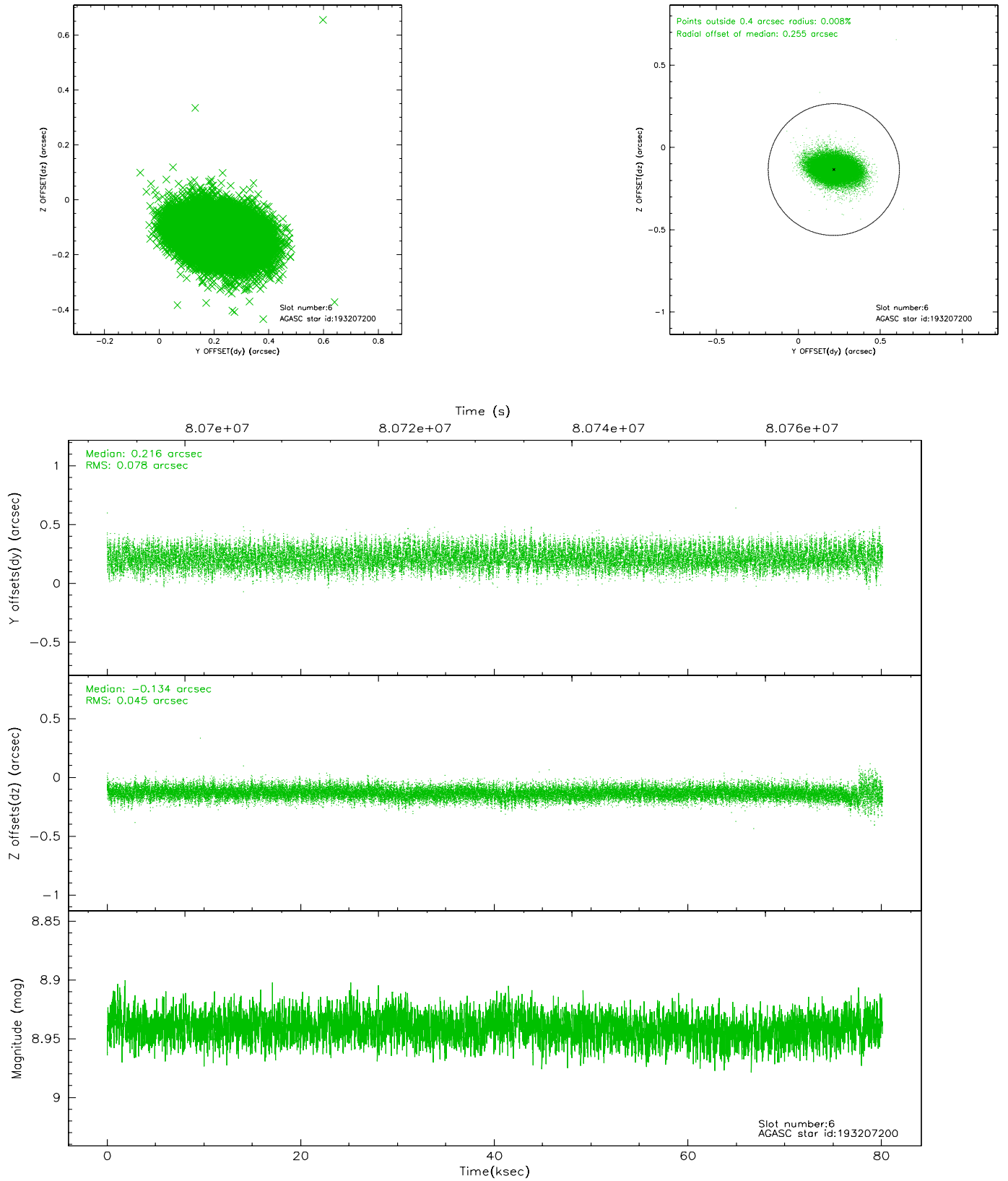
2.4.2 Slot 4



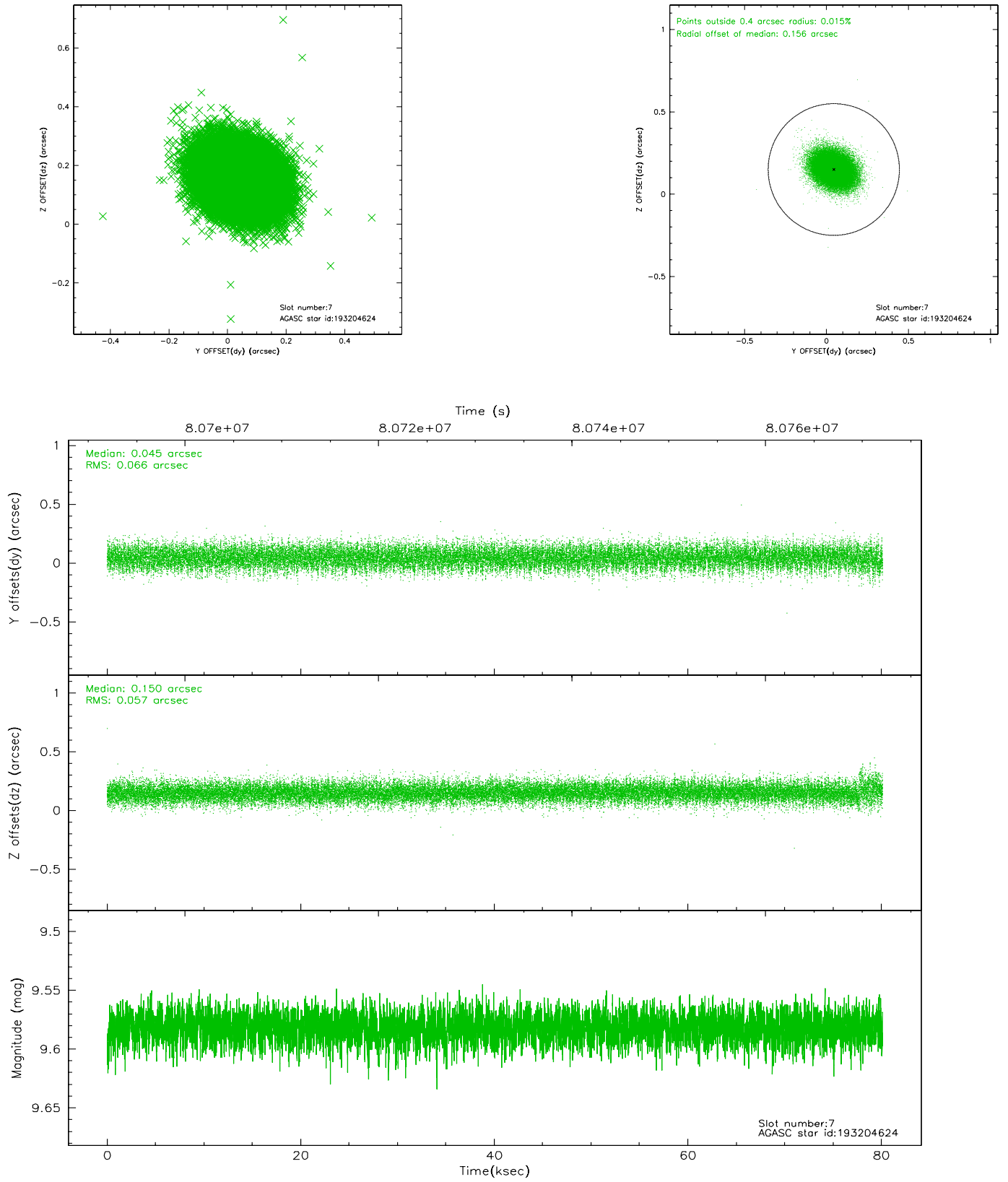
2.4.3 Slot 5



2.4.4 Slot 6

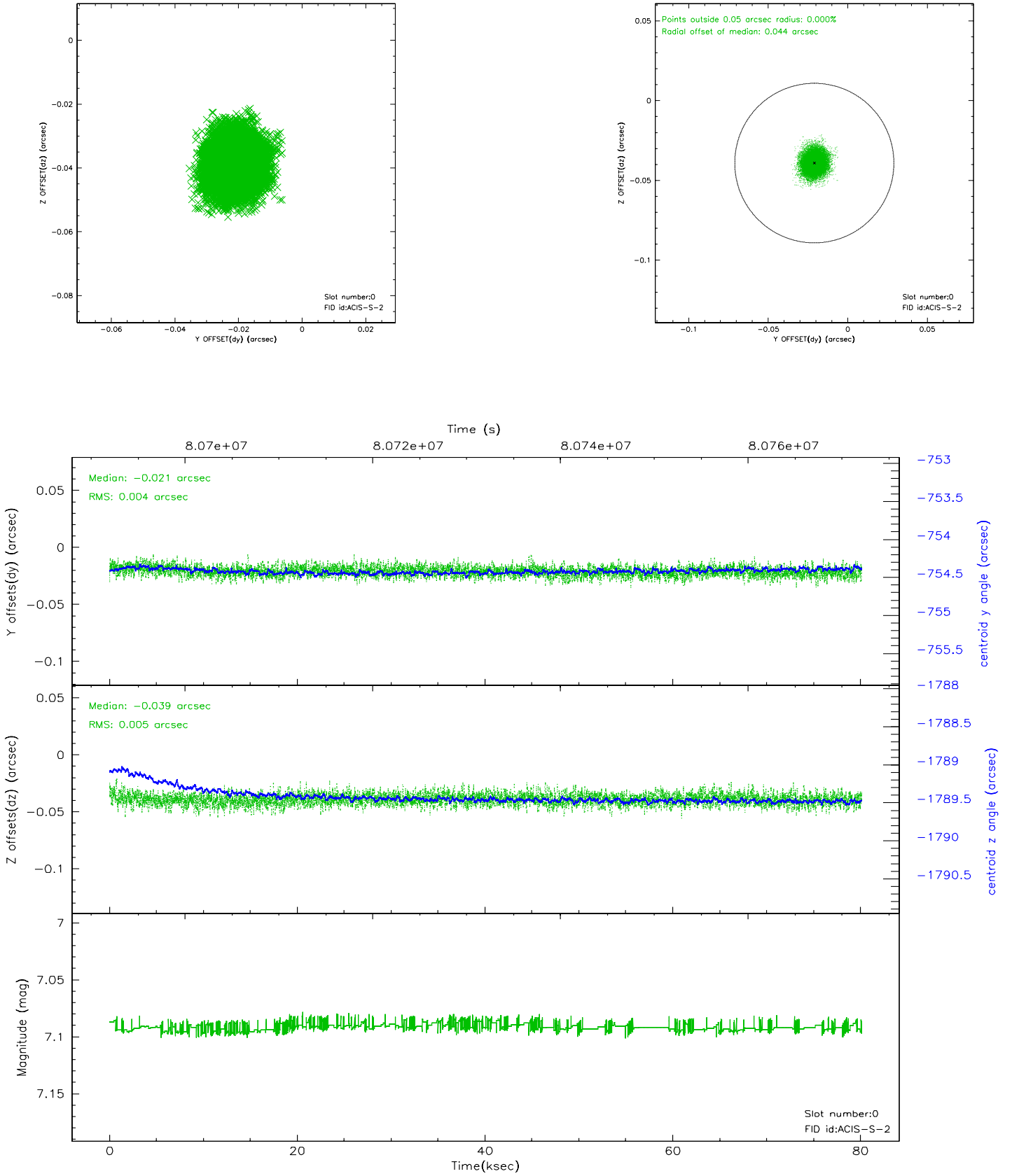


2.4.5 Slot 7

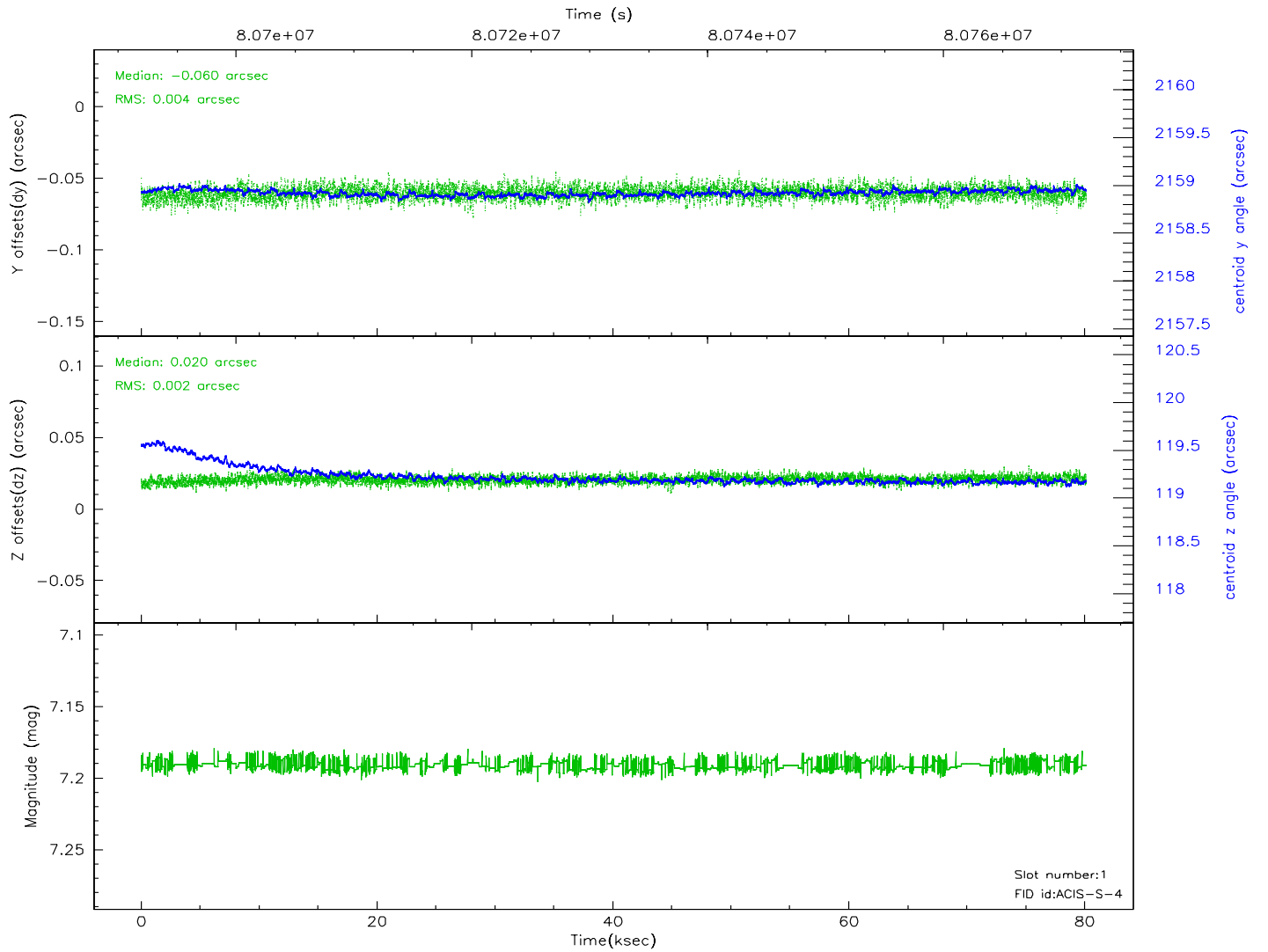
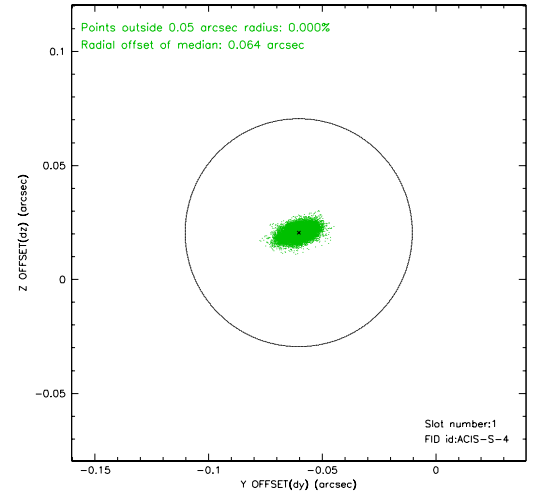
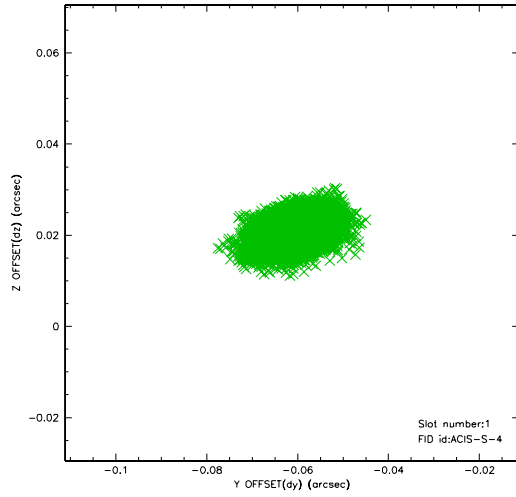


2.5 FID Slots

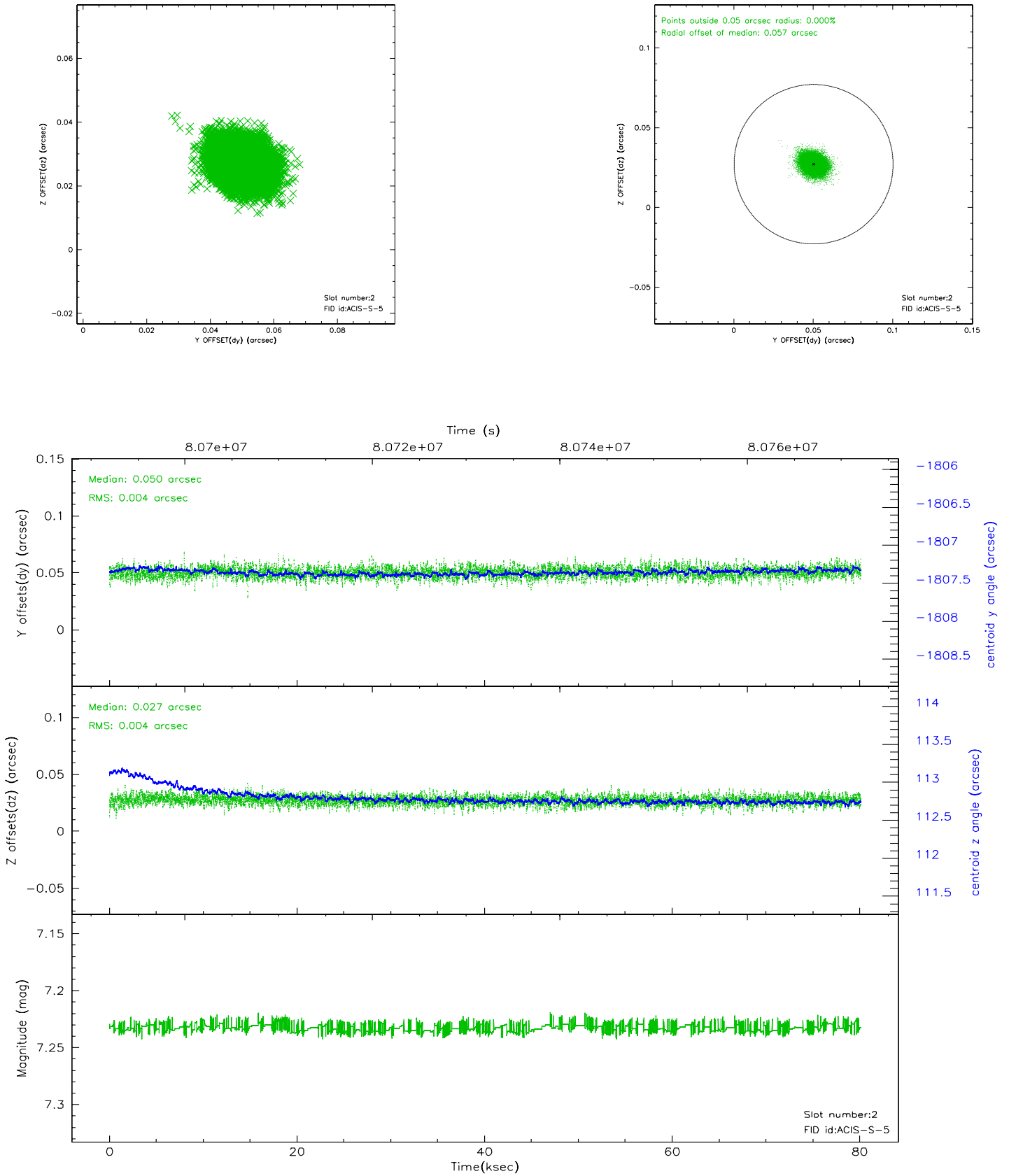
2.5.1 Slot 0



2.5.2 Slot 1



2.5.3 Slot 2

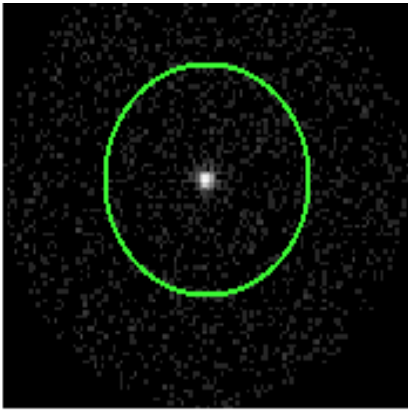


3 Gratings

3.1 HEG Arm



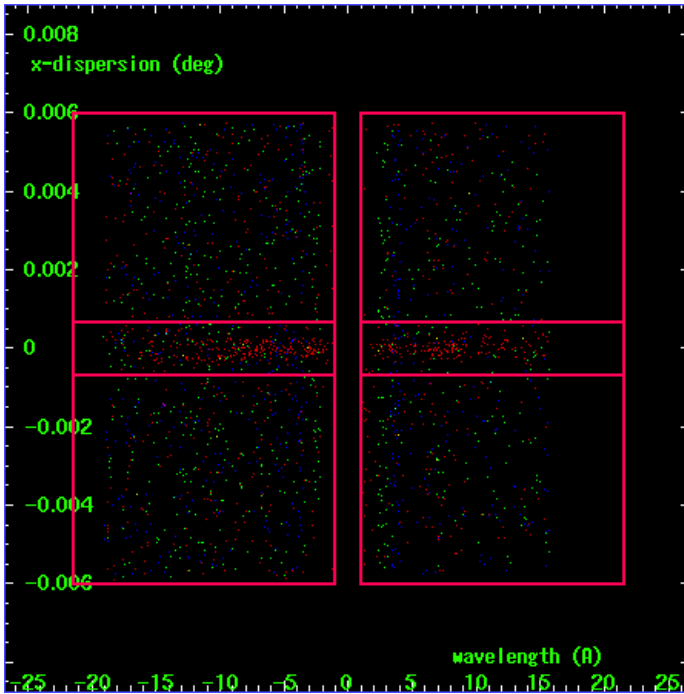
HEG Order Sort 123



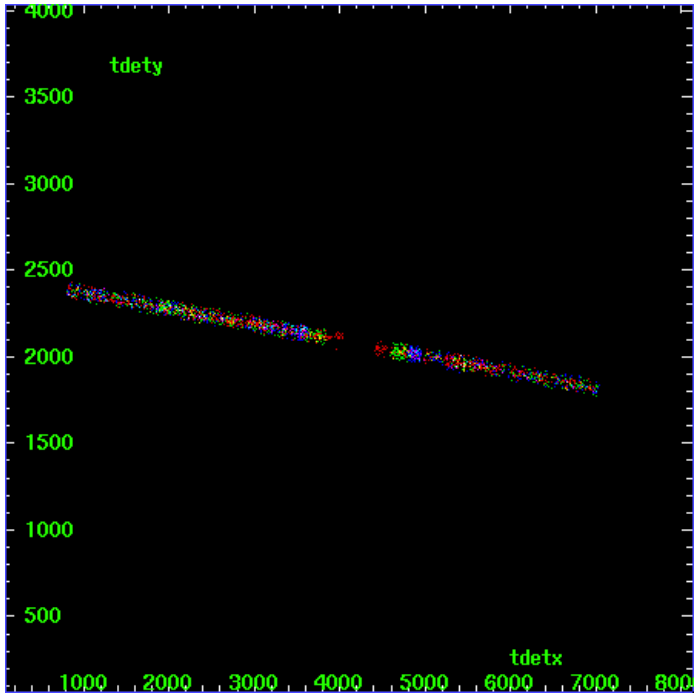
HEG Zero Order



HEG Order Sort ALL

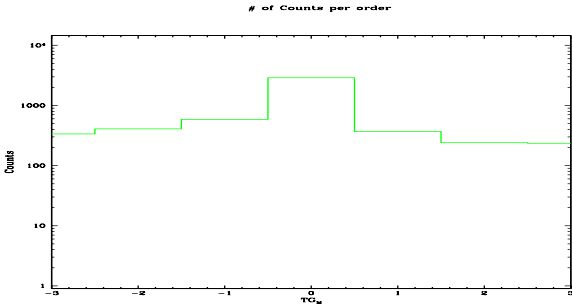


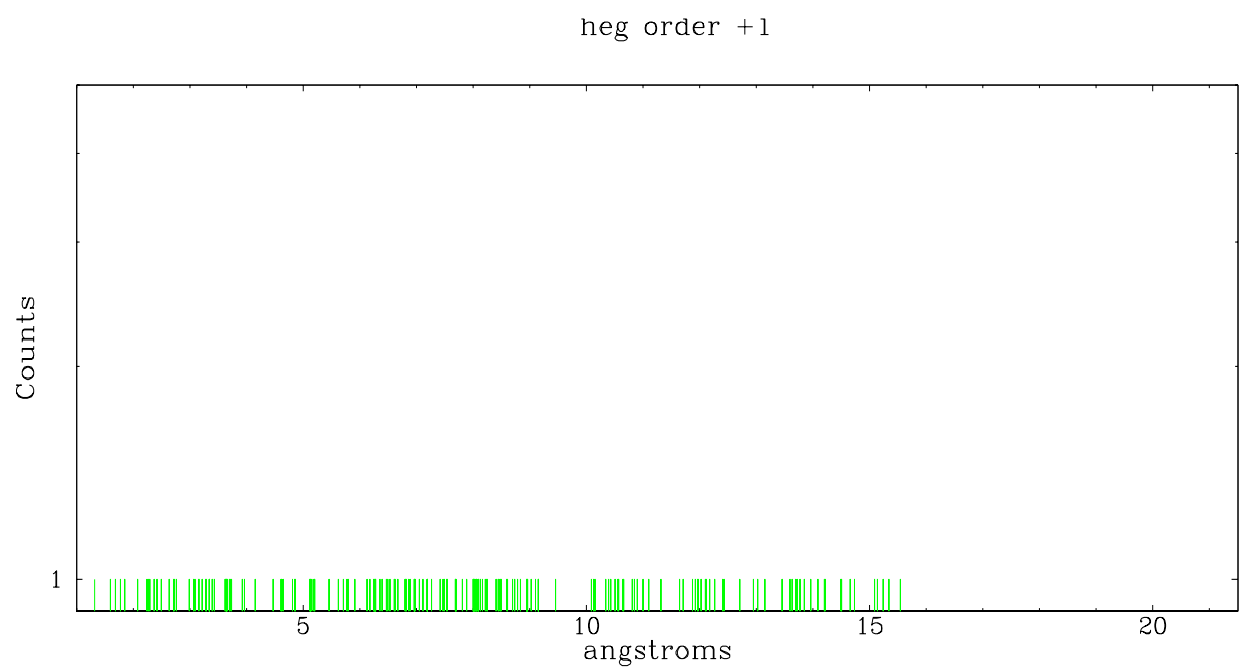
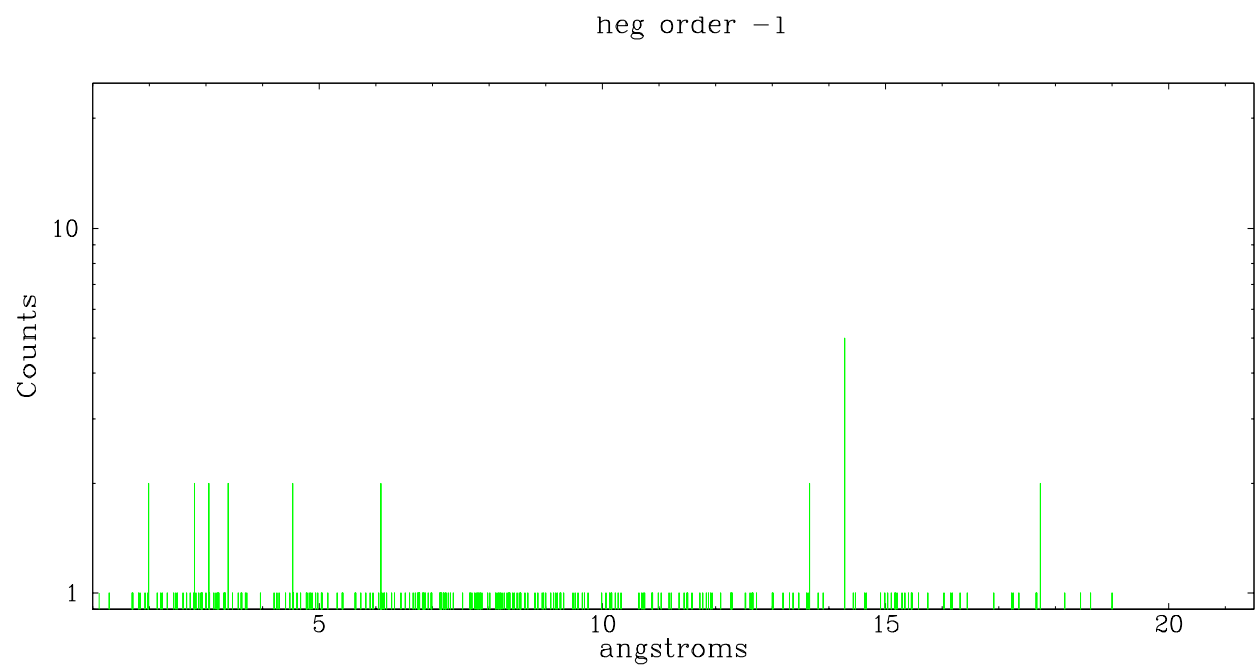
Spot Image HEG



Full Detector HEG

	order -3	order -2	order -1	order 0	order 1	order 2	order 3
Events	336	407	586	2897	369	240	235

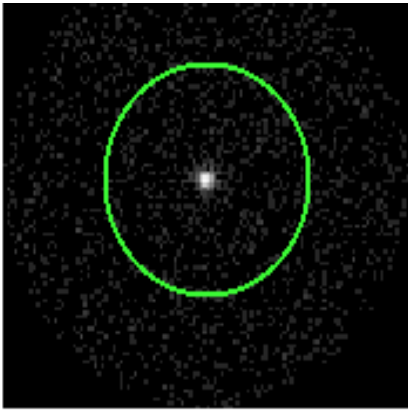




3.2 MEG Arm



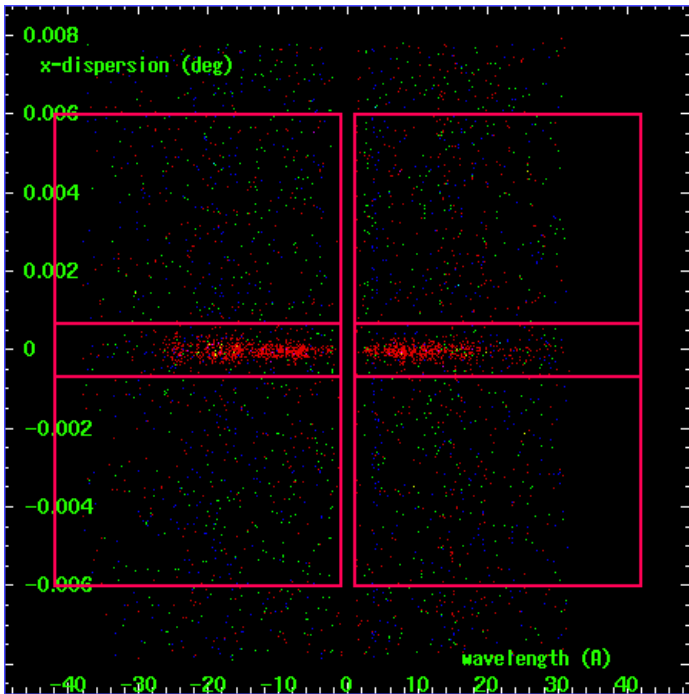
MEG Order Sort 123



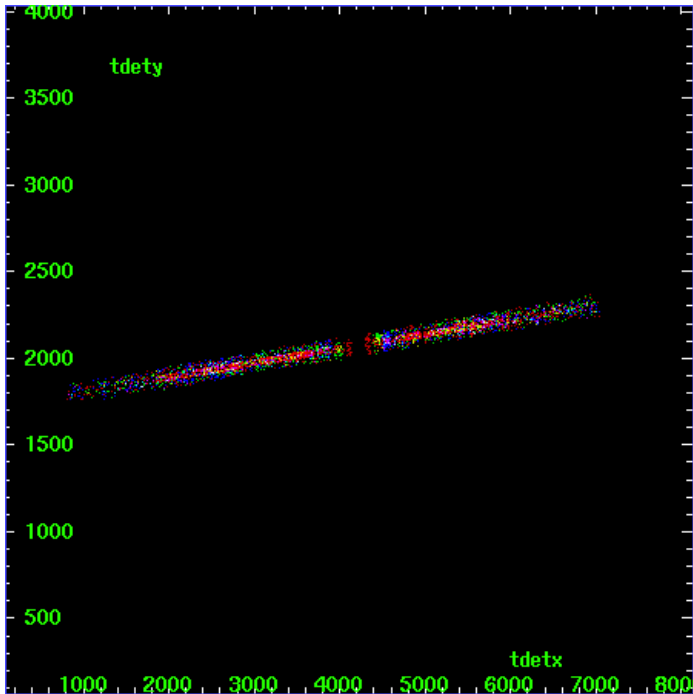
MEG Zero Order



MEG Order Sort ALL

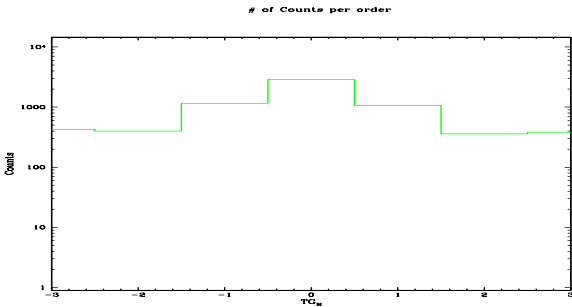


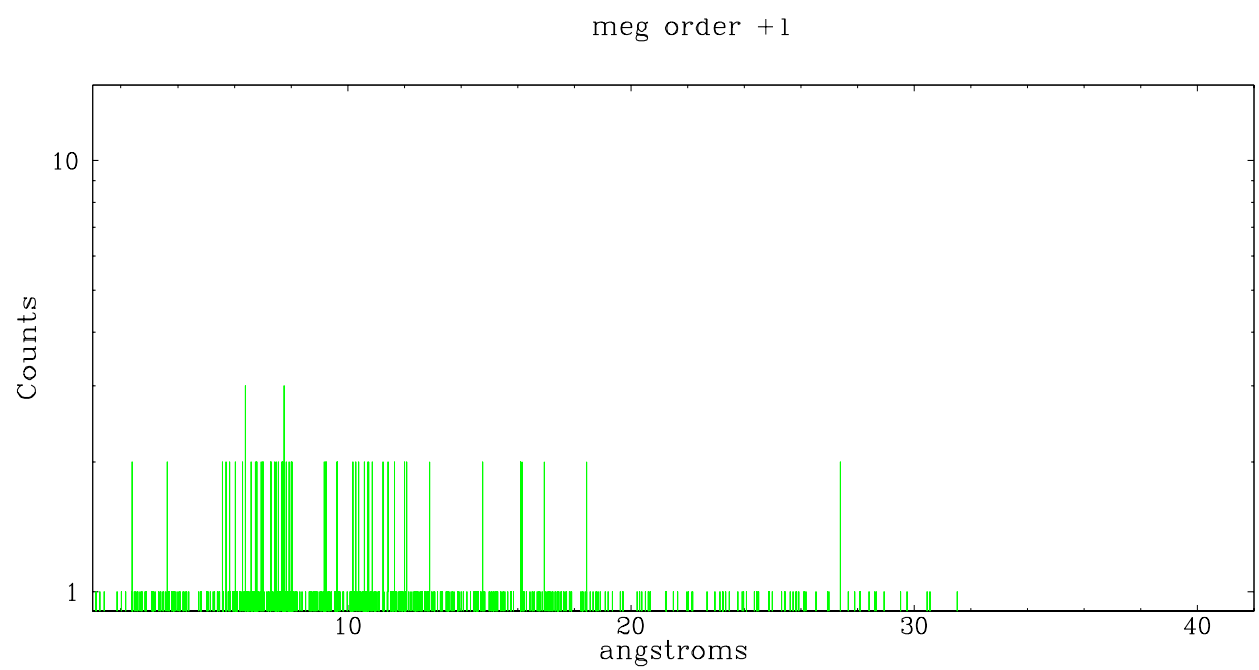
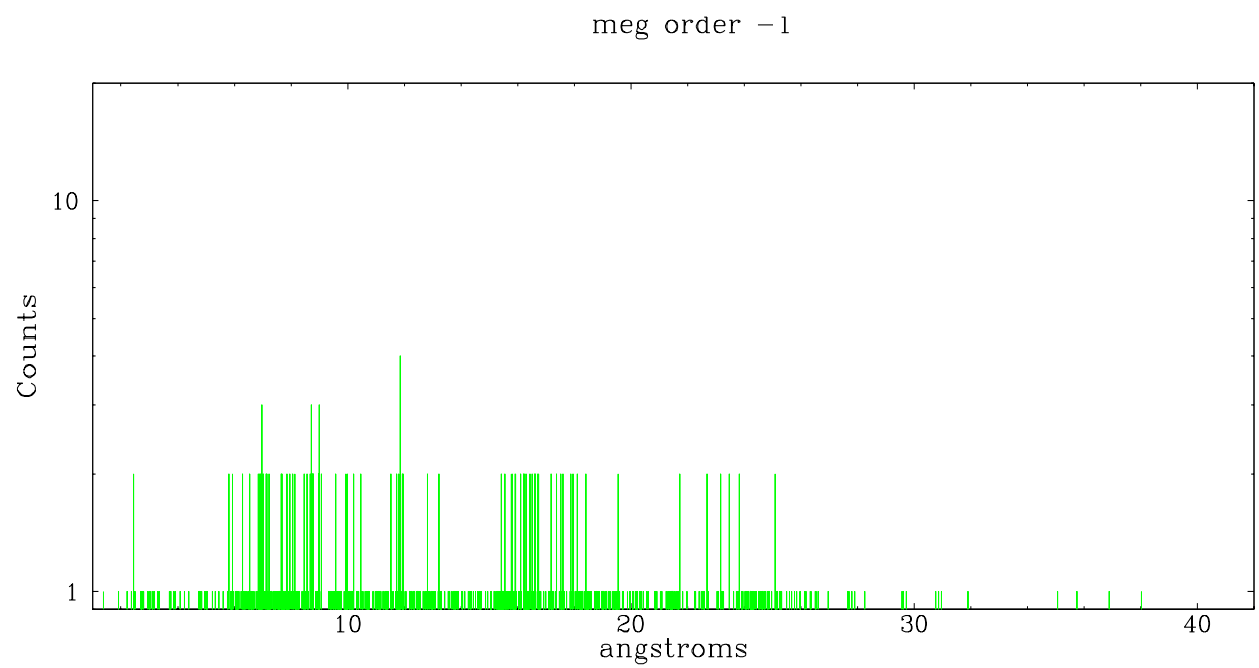
Spot Image MEG



Full Detector MEG

	order -3	order -2	order -1	order 0	order 1	order 2	order 3
Events	427	400	1157	2897	1062	359	383





A Summary

A.1 Status

V&V Scientist	Joy Nichols
V&V Date (YYYY-MM-DD)	2007.06.08
V&V Edition	1
V&V Disposition and Status	OK
V&V Charge Time	80.131

A.2 Comments