

V&V Reference Report

L2 ASCDS Version : 8.1.2

Observation 427 - L2 Version 3

Chandra X-Ray Center

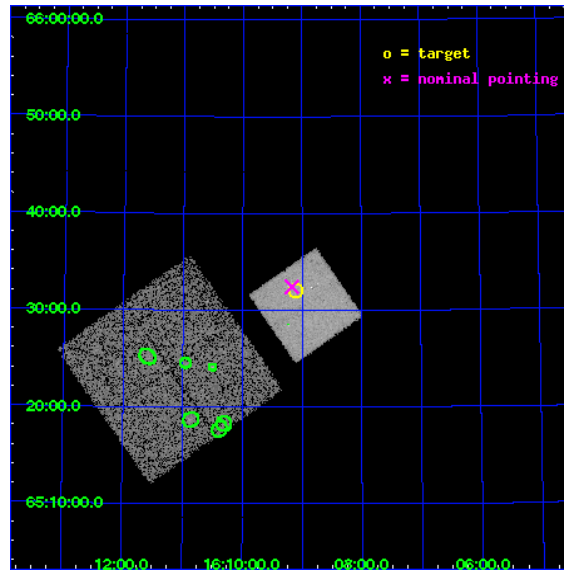
L2 Processing Date : Dec 5 2009

Contents

1	Front	2
2	OBI	3
2.1	OBI	3
2.1.1	Images	3
2.1.2	Bias	3
2.1.3	Parameters	4
2.1.4	Events	4
2.2	Compared Parameters	5
2.3	Aspect	6
2.4	Star Slots	9
2.4.1	Slot 3	9
2.4.2	Slot 4	10
2.4.3	Slot 5	11
2.4.4	Slot 6	12
2.4.5	Slot 7	13
2.5	FID Slots	14
2.5.1	Slot 0	14
2.5.2	Slot 1	15
2.5.3	Slot 2	16
3	Point Sources	17
A	Summary	18
A.1	Status	18
A.2	Comments	18

1 Front

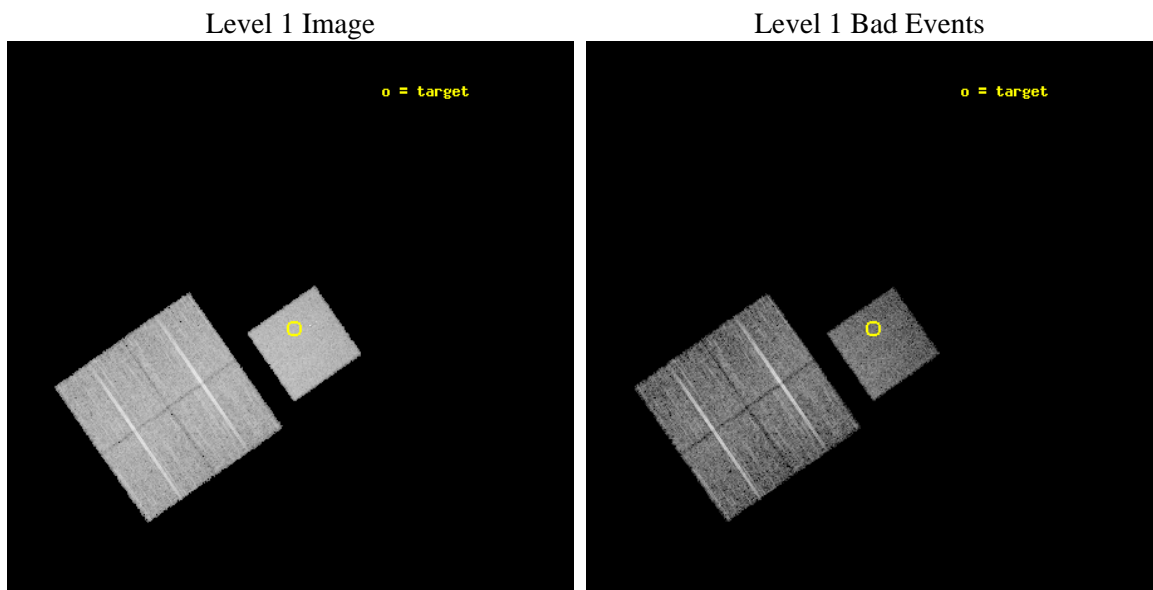
seq_num	700099	Sequence number
obs_id	427	Observation id
title	A SURVEY OF GRAVITATIONALLY LENSED QUASARS	Proposal title
observer	Prof Gordon Garmire	Principal investigator
object	CLASS 1608+656	Source name
dtcycle	0	
cycle	P	events from which exps? Prim/Second/Both
ra_targ	242.275	Observer's specified target RA
dec_targ	65.533333	Observer's specified target Dec
ra_nom	242.29268922284	Nominal RA
dec_nom	65.540464386755	Nominal Dec
roll_nom	55.112302627867	Nominal Roll
revision	3	Processing version of data
ontime	8245.8341690525	Sum of GTIs [s]
livetime	8141.4204517588	Livetime [s]
ontime0	8245.7931290492	Sum of GTIs [s]
ontime1	8245.7520890534	Sum of GTIs [s]
ontime2	8245.7110490501	Sum of GTIs [s]
ontime3	8242.4290488362	Sum of GTIs [s]
ontime7	8245.8341690525	Sum of GTIs [s]
l2events	58270	Number of level 2 events



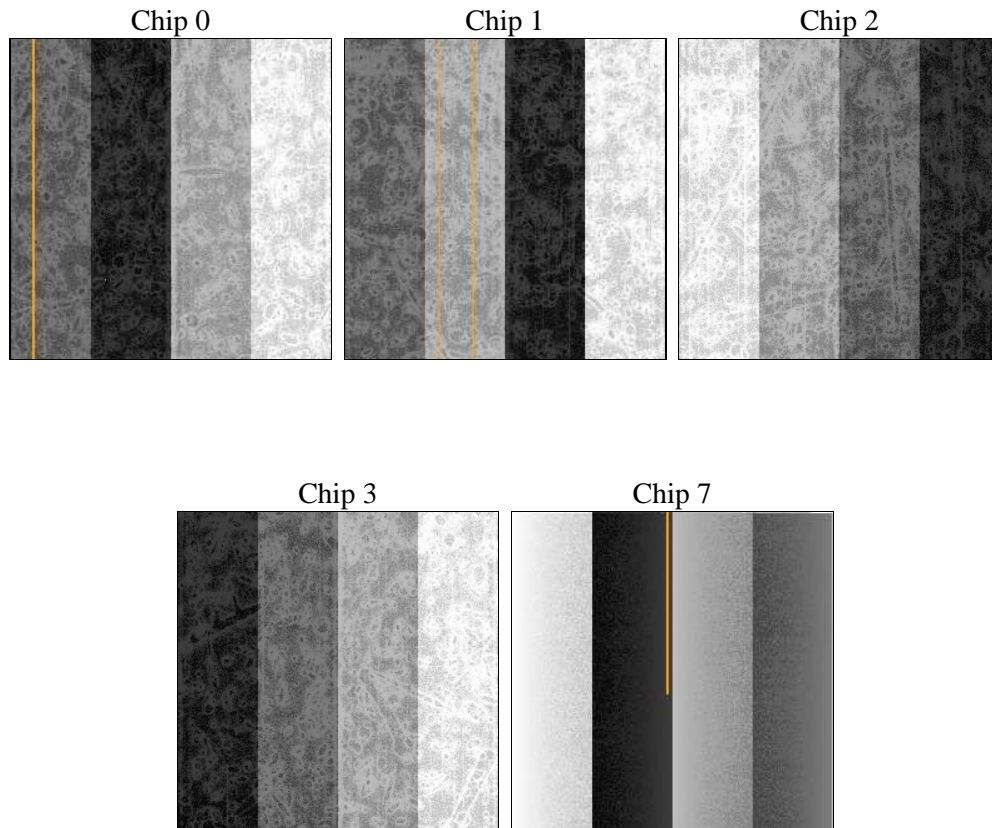
2 OBI

2.1 OBI

2.1.1 Images



2.1.2 Bias



2.1.3 Parameters

obi_num	1	Obi number	sched_exp_time	9094.611000	Scheduled observation exposure time
ascdsver	8.1.2	ASCDS version number	ontime	8245.8341690525	Sum of GTIs [s]
caldsver	4.1.4	 	ontime0	8245.7931290492	Sum of GTIs [s]
date	2009-12-05T04:36:09	Date and time of file creation	ontime1	8245.7520890534	Sum of GTIs [s]
revision	3	Processing version of data	ontime2	8245.7110490501	Sum of GTIs [s]
			ontime3	8242.4290488362	Sum of GTIs [s]
			ontime7	8245.8341690525	Sum of GTIs [s]
			l1events	350774	Number of level 1 events

2.1.4 Events

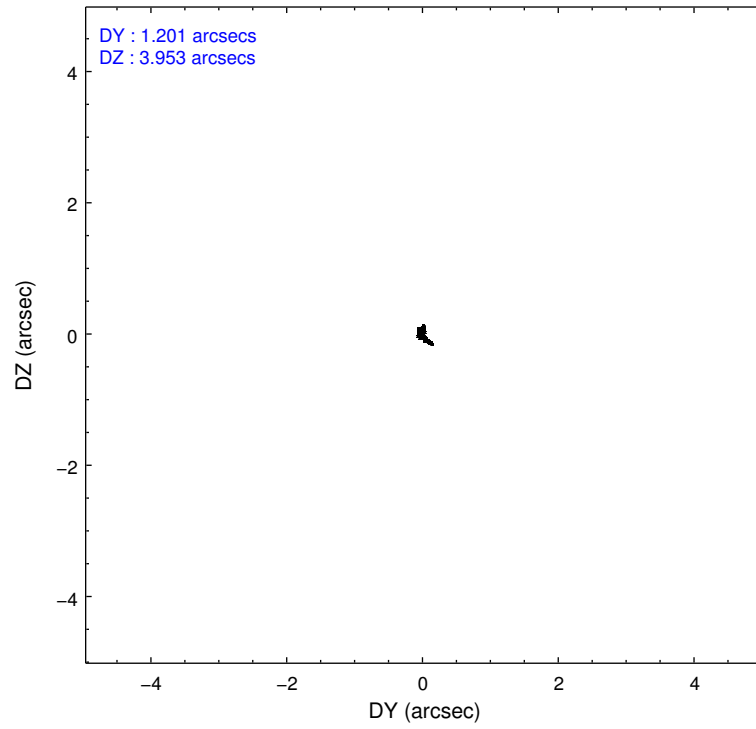
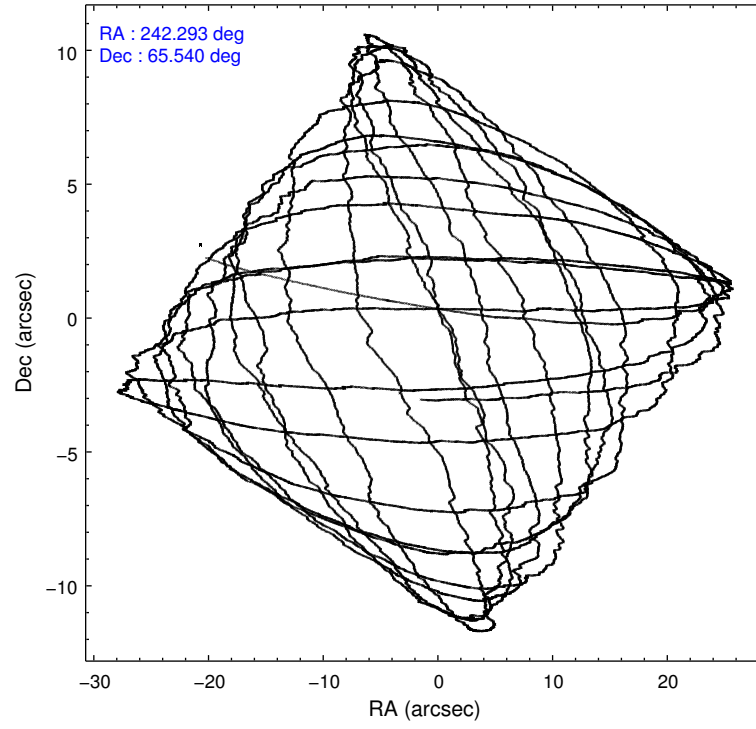
	ccd 0	ccd 1	ccd 2	ccd 3	ccd 7
level 1 events	67109	64338	70620	67243	81464
rejected events	60176	57206	64390	60642	46663
rejected %	89%	88%	91%	90%	57%

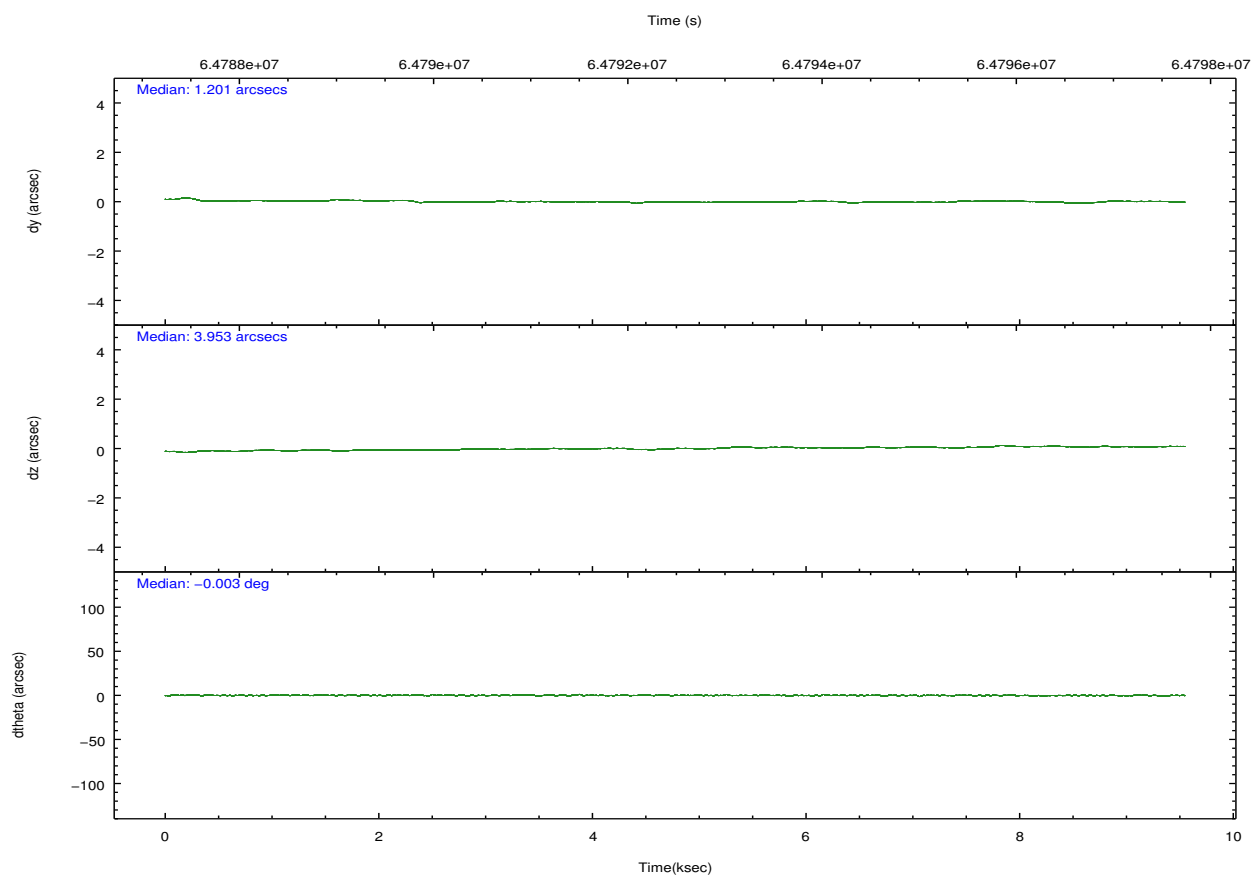
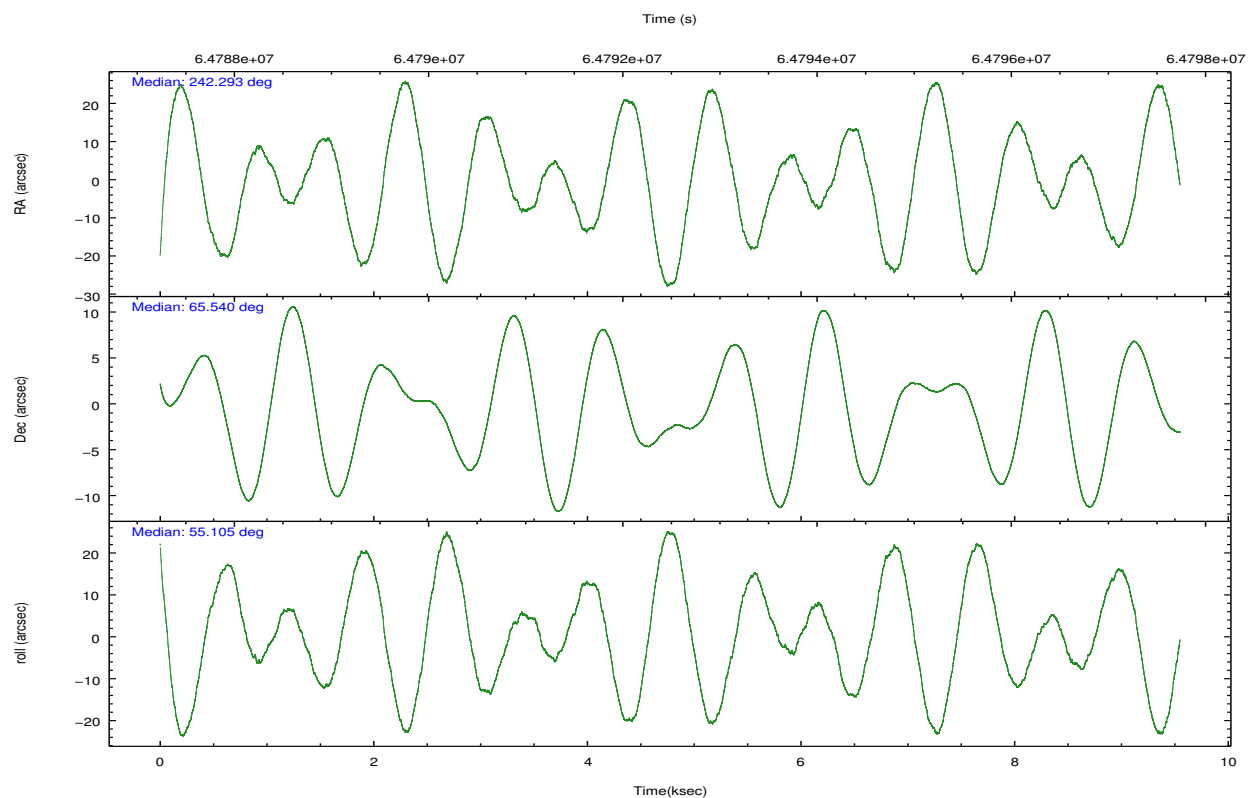
	ccd 0	ccd 1	ccd 2	ccd 3	ccd 7
grade 0 events	1655	1574	1284	1347	2847
	2%	2%	1%	2%	3%
grade 1 events	24	21	13	10	35
	0%	0%	0%	0%	0%
grade 2 events	2661	2722	2591	2744	7453
	3%	4%	3%	4%	9%
grade 3 events	481	573	423	431	2251
	0%	0%	0%	0%	2%
grade 4 events	469	470	415	400	2031
	0%	0%	0%	0%	2%
grade 5 events	1382	1410	1181	1377	4648
	2%	2%	1%	2%	5%
grade 6 events	1674	1805	1520	1683	20239
	2%	2%	2%	2%	24%
grade 7 events	58763	55763	63193	59251	41960
	87%	86%	89%	88%	51%

2.2 Compared Parameters

Parameter	Planned	Actual	Parameter	Planned	Actual
Instrument	ACIS	ACIS	Obspar format version number	6	6
Detector	ACIS-01237	ACIS-01237	Obspar file type	PREDICTED	ACTUAL
Grating	NONE	NONE	Obspar update status	NONE	UPDATED
Data mode	FAINT	FAINT	Number of optional ACIS chips dropped	0	0
Observation mode	POINTING	POINTING	On-chip summing requested	N	N
Pointing RA	242.286789	242.2926892228397	Subarray requested	NONE	NONE
Pointing Dec	65.513001	65.54046438675464	Alternating exposures requested	N	N
Pointing Roll	54.961042	55.11230262786684	Primary exposure time	0.000000	3.2
SIM focus pos (mm)	-0.684267	-0.6828225247311905			
SIM defocus (mm)	0	0.001444936568705701			
SIM translation stage pos (mm)	-190.132523	-190.1400660498719			
SIM translation stage offset (mm)	0	0.00754346686406393			
Observation start time	64788166.184000	64787079.222651			
Observation start date	2000-01-20T20:41:42	2000-01-20T20:24:39			
Observation end time	64797261.184000	64798396.248063			
Observation end date	2000-01-20T23:13:17	2000-01-20T23:33:16			
Read mode	TIMED	TIMED			

2.3 Aspect



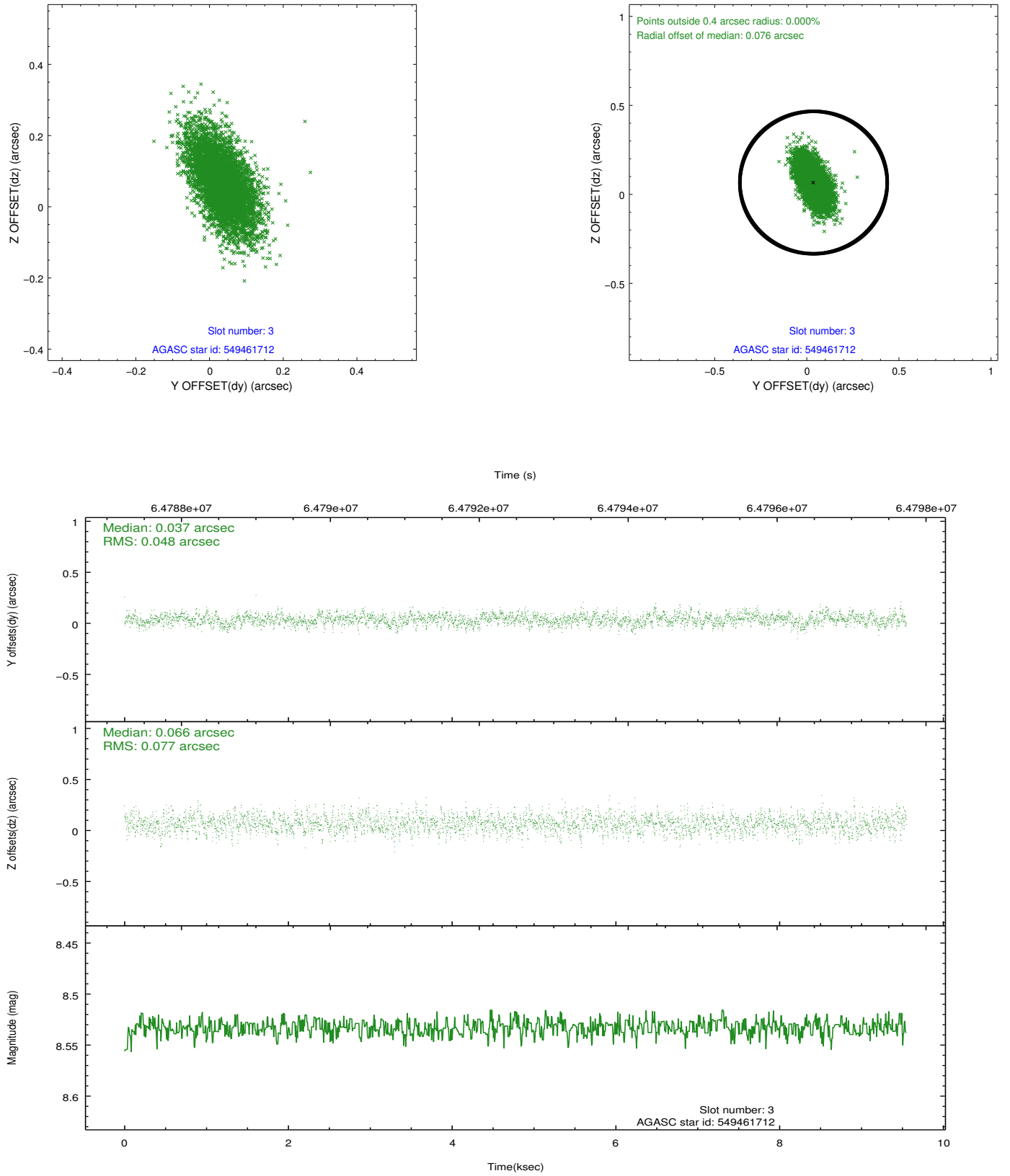


Slot Statistics

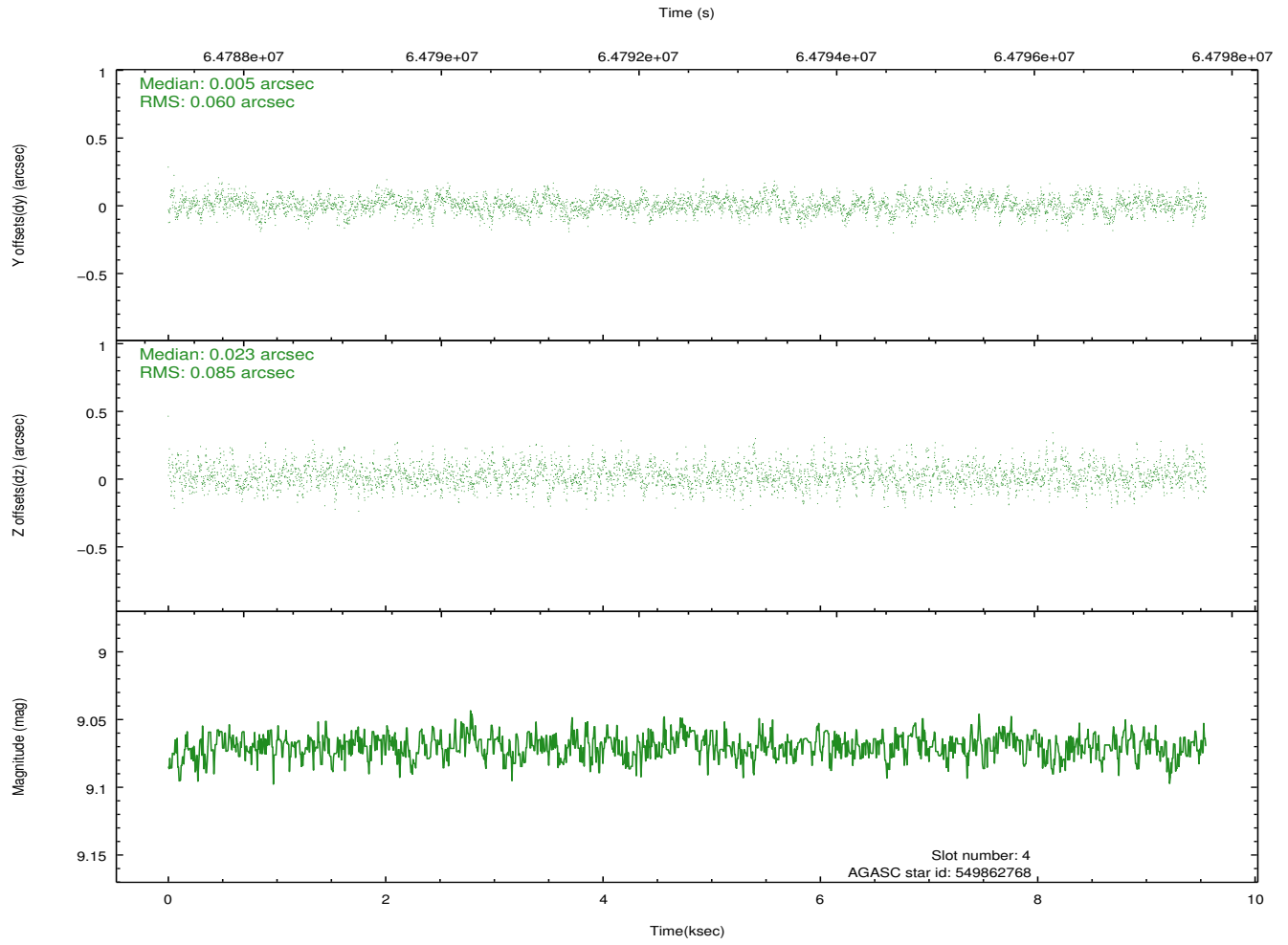
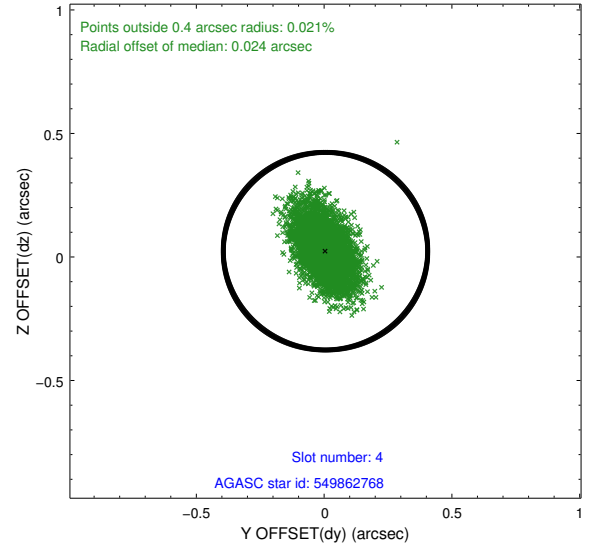
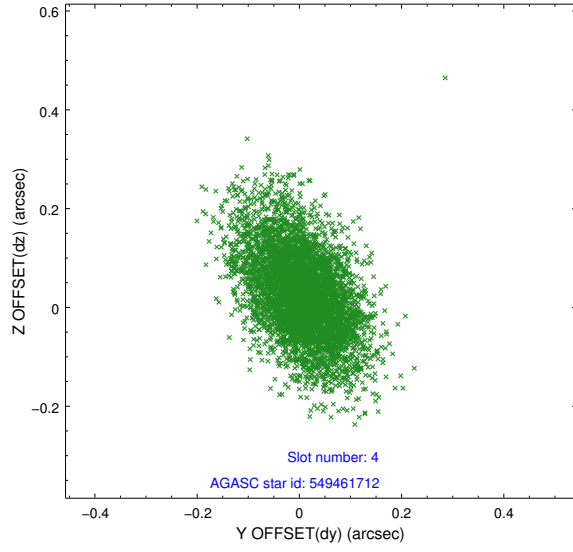
slot	status	id	mag	n_pts	med_dy	med_dz	dr1	dr2	ra	dec	mean_y	mean_z
0	FID	ACIS-S-2	7.11	2329	-0.011	-0.016	0.007	0.011	0.000000	0.000000	-753.85	-1725.03
1	FID	ACIS-S-4	7.21	2328	0.010	0.010	0.006	0.010	0.000000	0.000000	2159.24	182.83
2	FID	ACIS-S-5	7.24	2328	-0.030	0.015	0.006	0.010	0.000000	0.000000	-1805.94	177.24
3	GUIDE	549461712	8.53	4658	0.037	0.066	0.092	0.166	242.024311	64.836538	-2223.34	-1068.91
4	GUIDE	549862768	9.07	4659	0.005	0.023	0.107	0.190	243.555283	65.694783	1630.49	-1152.15
5	GUIDE	549864184	9.11	4657	-0.063	0.137	0.112	0.189	243.727034	65.246202	481.28	-2314.55
6	GUIDE	549849656	9.23	4656	-0.014	-0.189	0.127	0.213	240.650889	65.694358	-831.08	2376.72
7	GUIDE	549849728	9.53	4657	0.030	-0.041	0.133	0.221	241.259127	65.660762	-429.63	1561.41

2.4 Star Slots

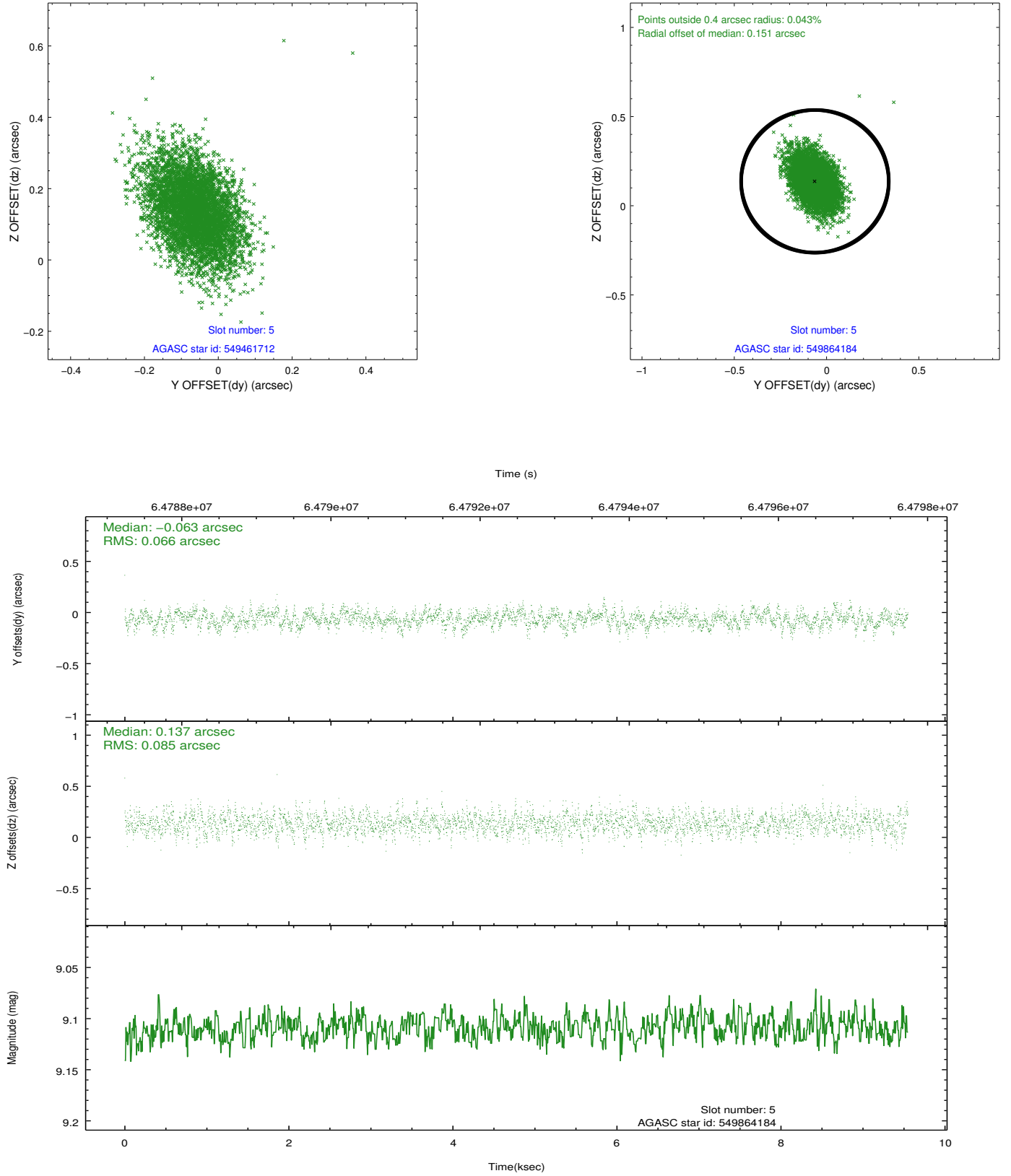
2.4.1 Slot 3



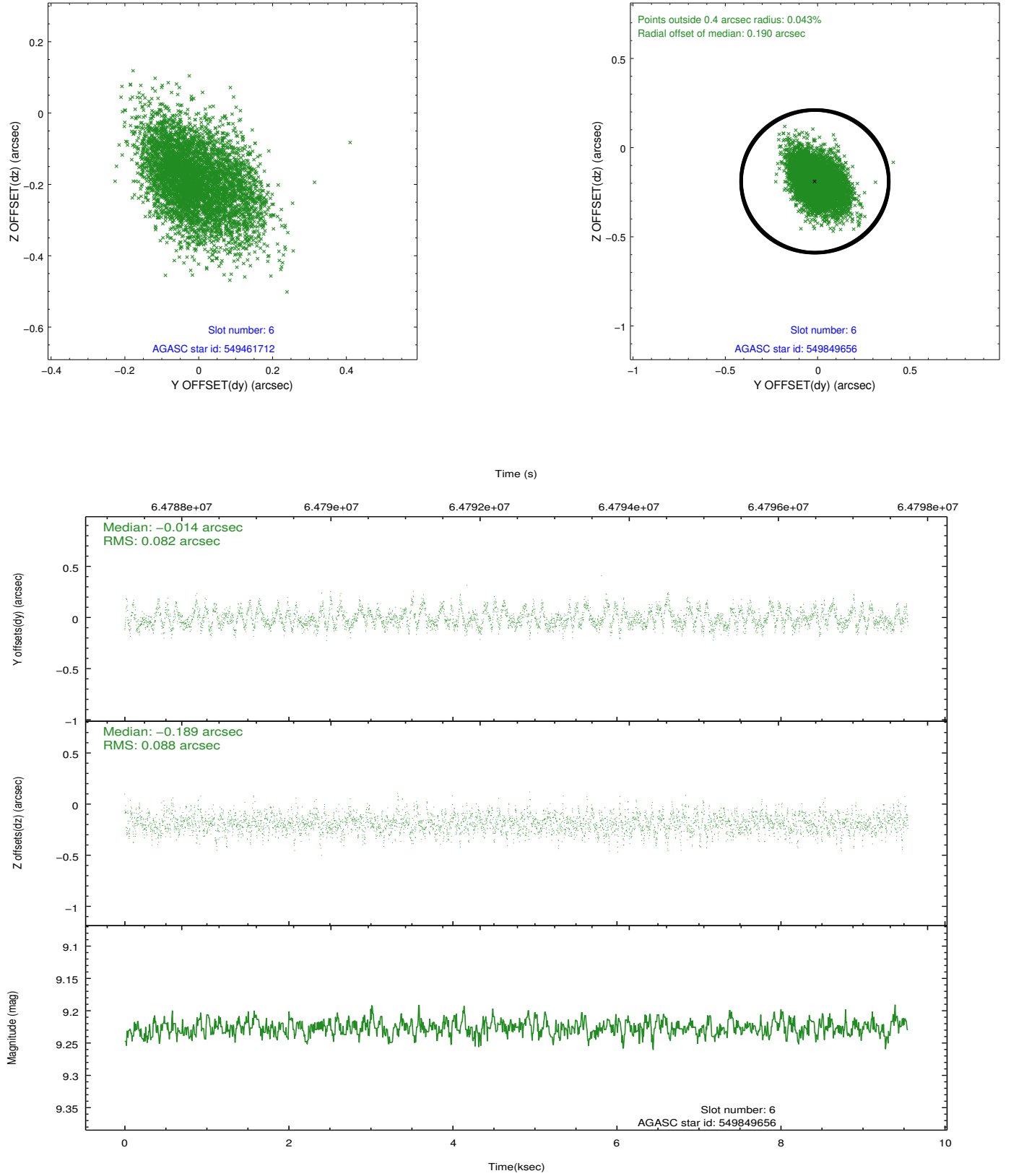
2.4.2 Slot 4



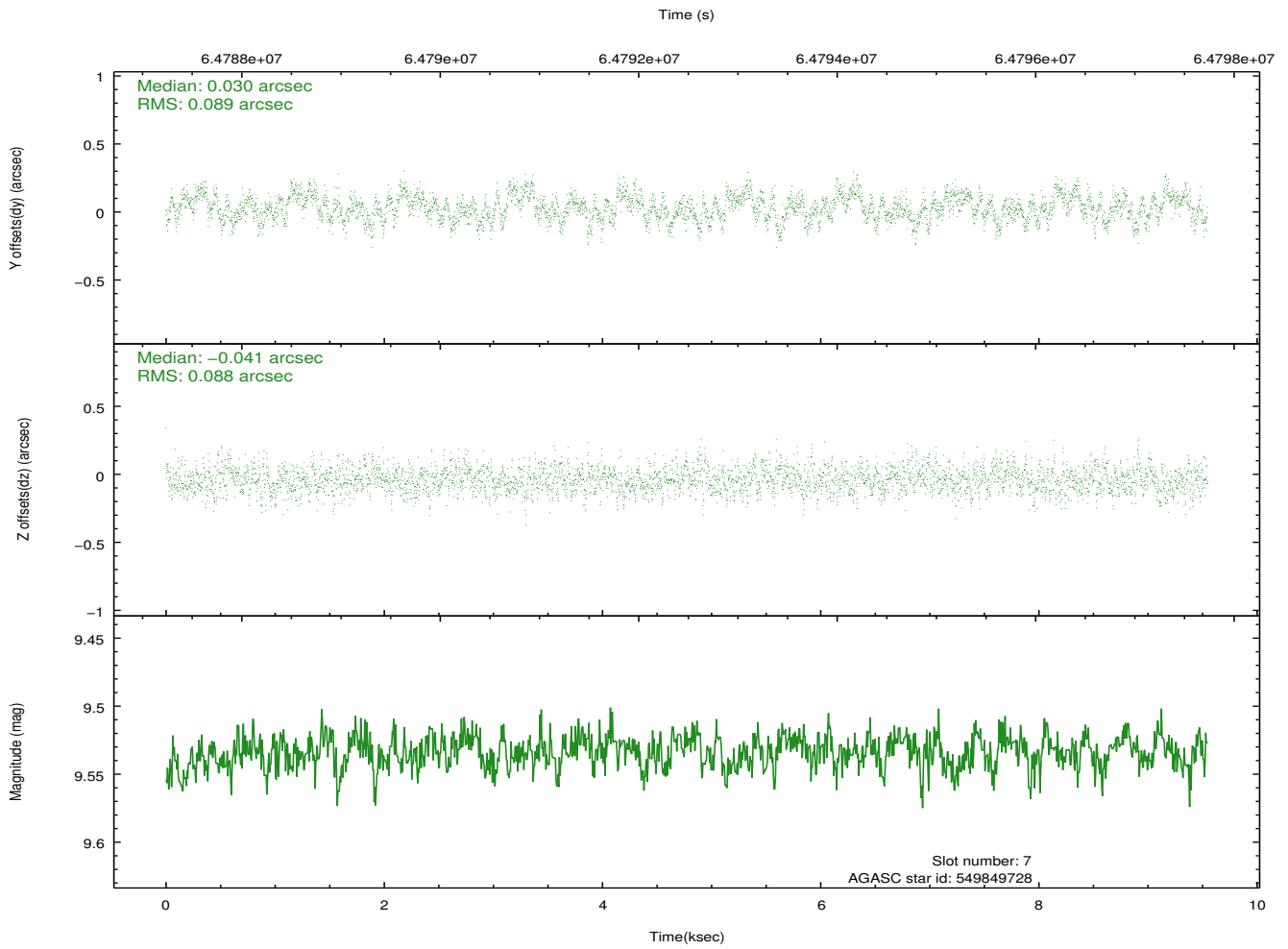
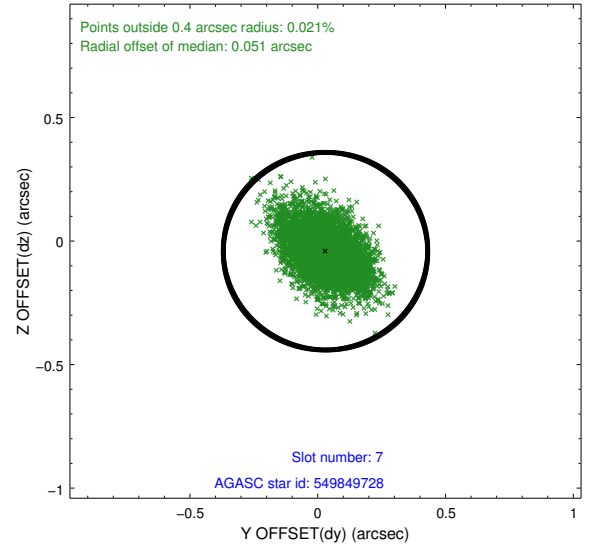
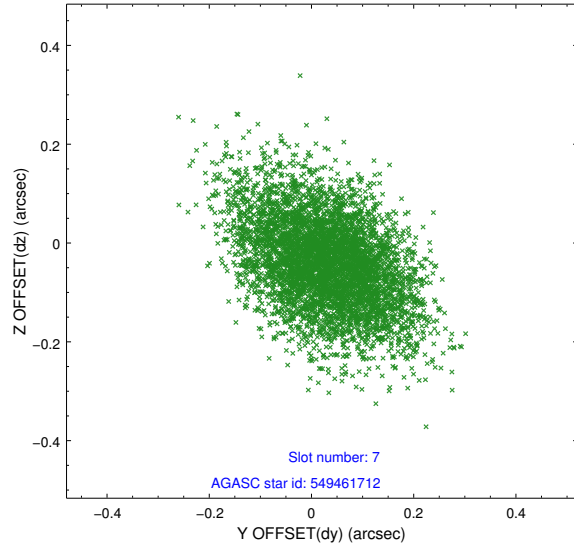
2.4.3 Slot 5



2.4.4 Slot 6

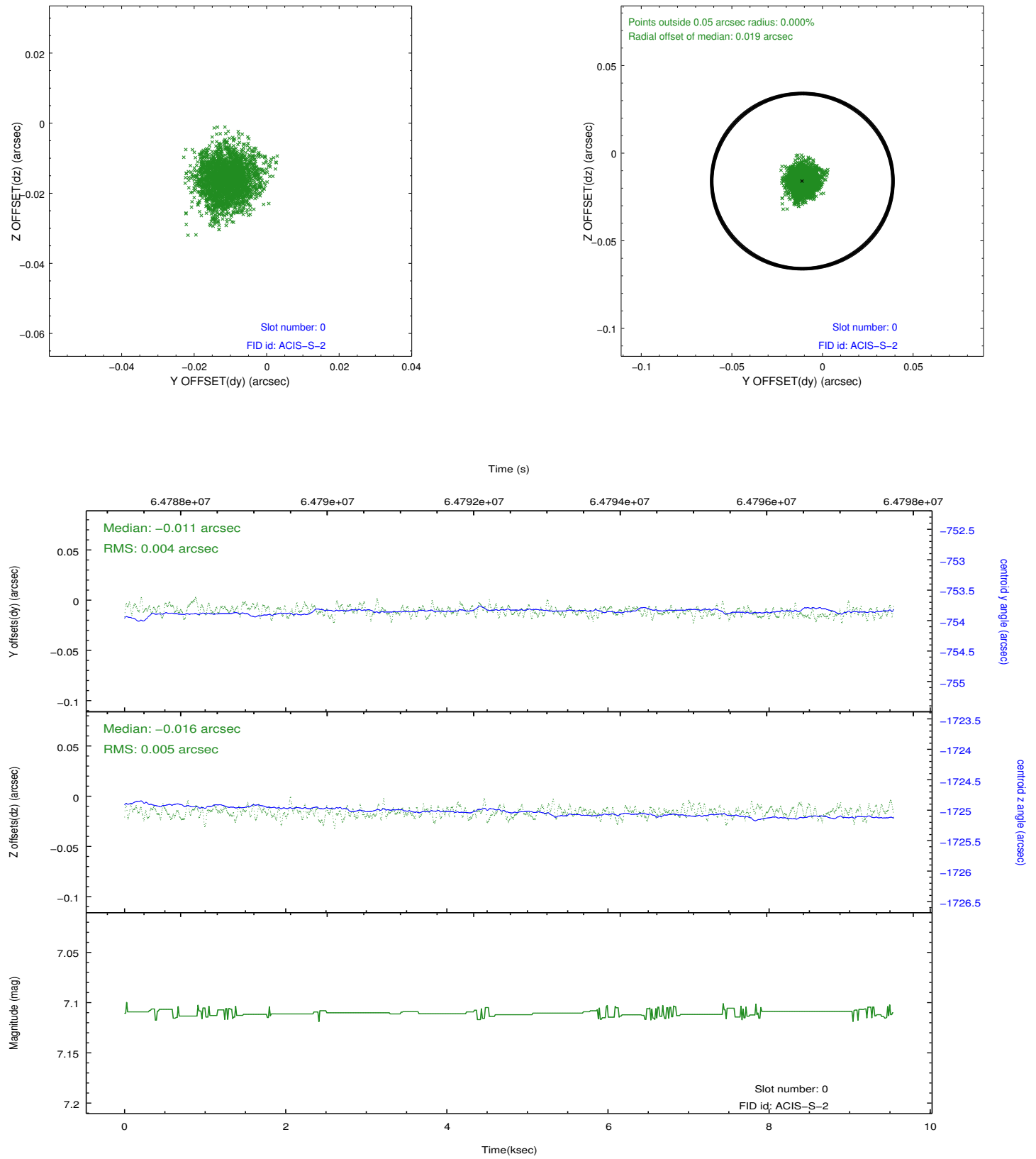


2.4.5 Slot 7

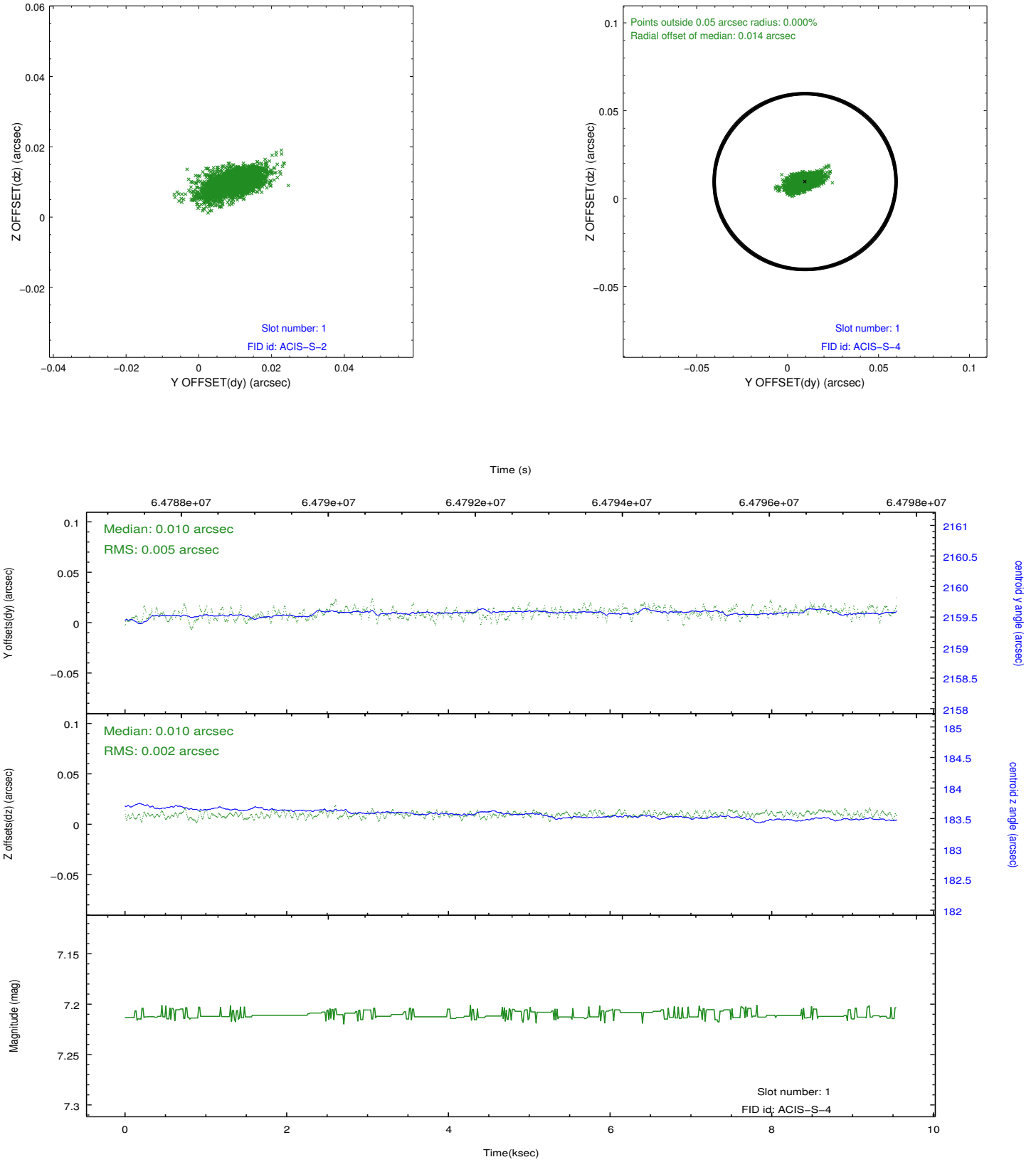


2.5 FID Slots

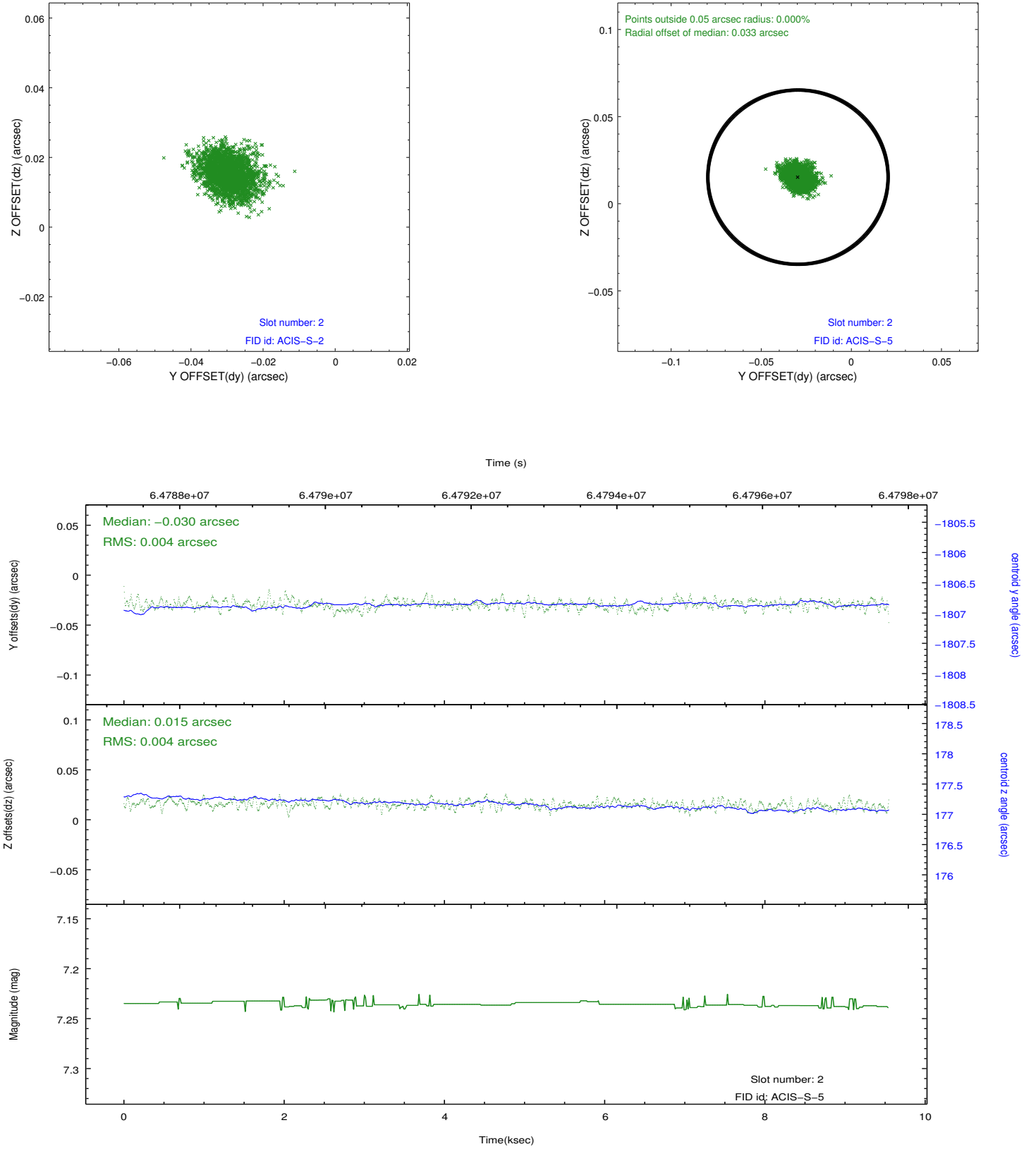
2.5.1 Slot 0



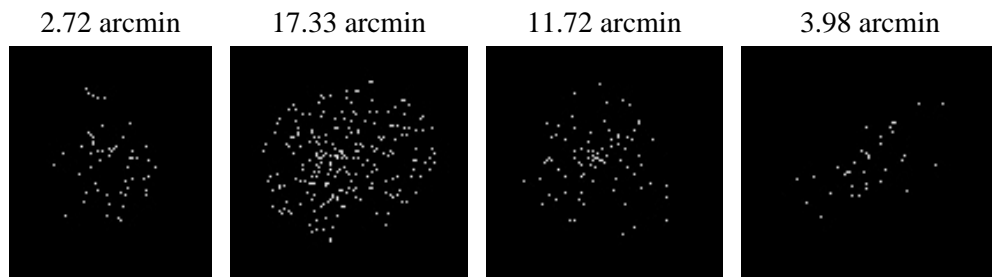
2.5.2 Slot 1



2.5.3 Slot 2



3 Point Sources



A Summary

A.1 Status

V&V Scientist	Beth Sundheim
V&V Date (YYYY-MM-DD)	2009.12.10
V&V Edition	1
V&V Disposition and Status	OK
V&V Charge Time	8.246

A.2 Comments

Focal plane temperature is warmer than -118.7 C degrees during the entire observation. This temperature is the upper limit of the verified ACIS calibration for the front-illuminated chips. The focal plane temperature is also warmer than -116.7 degrees C for the entire observation. This temperature is the upper limit of the verified ACIS calibration for the back-illuminated chips. The ACIS spectral response calibration is less accurate at these warmer temperatures than it is at -119.7 C. Users whose science objectives depend on the most accurate spectral response (ie: fitting line-rich spectra) may notice an effect. Users whose science objectives do not depend on the most accurate spectral response should not notice an effect.