

V&V Reference Report

L2 ASCDS Version : 8.4.5

Observation 423 - L2 Version 4
Chandra X-Ray Center

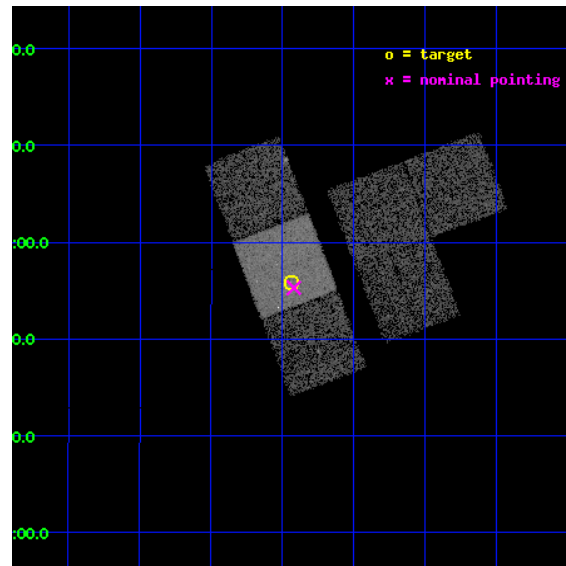
L2 Processing Date : Aug 26 2012

Contents

1	Front	2
2	OBI	3
2.1	OBI	3
2.1.1	Images	3
2.1.2	Bias	3
2.1.3	Parameters	4
2.1.4	Events	4
2.2	Compared Parameters	5
2.3	Aspect	6
2.4	Star Slots	9
2.4.1	Slot 3	9
2.4.2	Slot 4	10
2.4.3	Slot 5	11
2.4.4	Slot 6	12
2.4.5	Slot 7	13
2.5	FID Slots	14
2.5.1	Slot 0	14
2.5.2	Slot 1	15
2.5.3	Slot 2	16
A	Summary	17
A.1	Status	17
A.2	Comments	17

1 Front

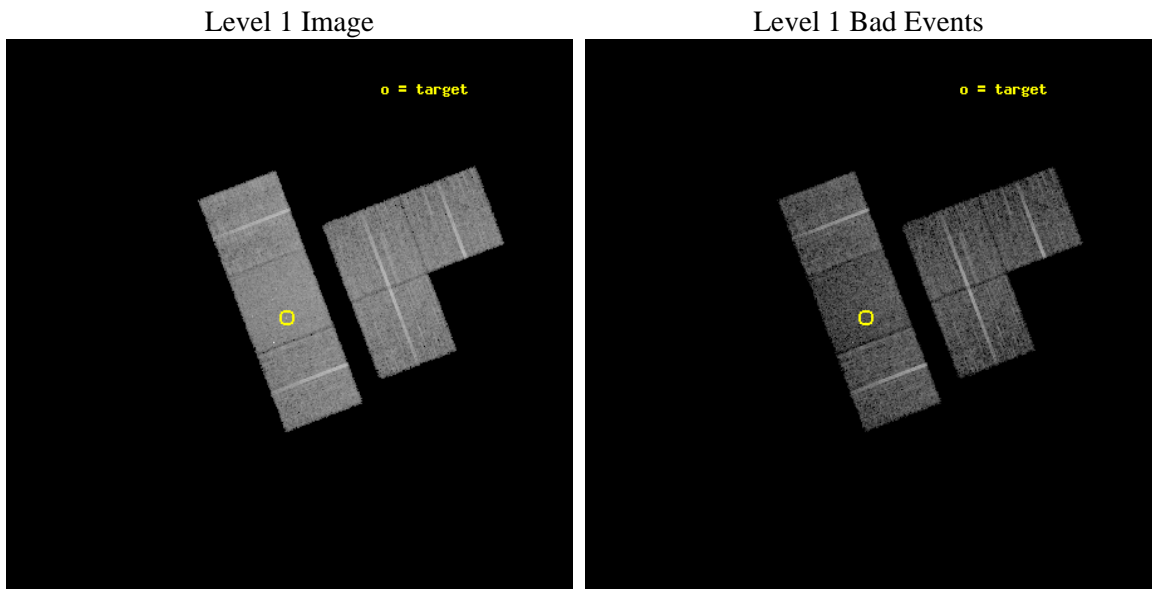
seq_num	700095	Sequence number
obs_id	423	Observation id
title	A SURVEY OF GRAVITATIONALLY LENSED QUASARS	Proposal title
observer	Professor Gordon Garmire	Principal investigator
object	PMN J1131+0455	Source name
dtcycle	0	
cycle	P	events from which exps? Prim/Second/Both
ra_targ	172.985417	Observer's specified target RA [deg]
dec_targ	4.930278	Observer's specified target Dec [deg]
ra_nom	172.98020847666	Nominal RA [deg]
dec_nom	4.9216944779785	Nominal Dec [deg]
roll_nom	249.13978837799	Nominal Roll [deg]
revision	4	Processing version of data
ontime	7660.7590368837	Sum of GTIs [s]
livetime	7563.7538932034	Livetime [s]
ontime1	7664.0000071228	Sum of GTIs [s]
ontime2	7664.0000071228	Sum of GTIs [s]
ontime3	7660.7590368837	Sum of GTIs [s]
ontime6	7657.5180766433	Sum of GTIs [s]
ontime7	7660.7590368837	Sum of GTIs [s]
ontime8	7664.0000071228	Sum of GTIs [s]
l2events	53581	Number of level 2 events



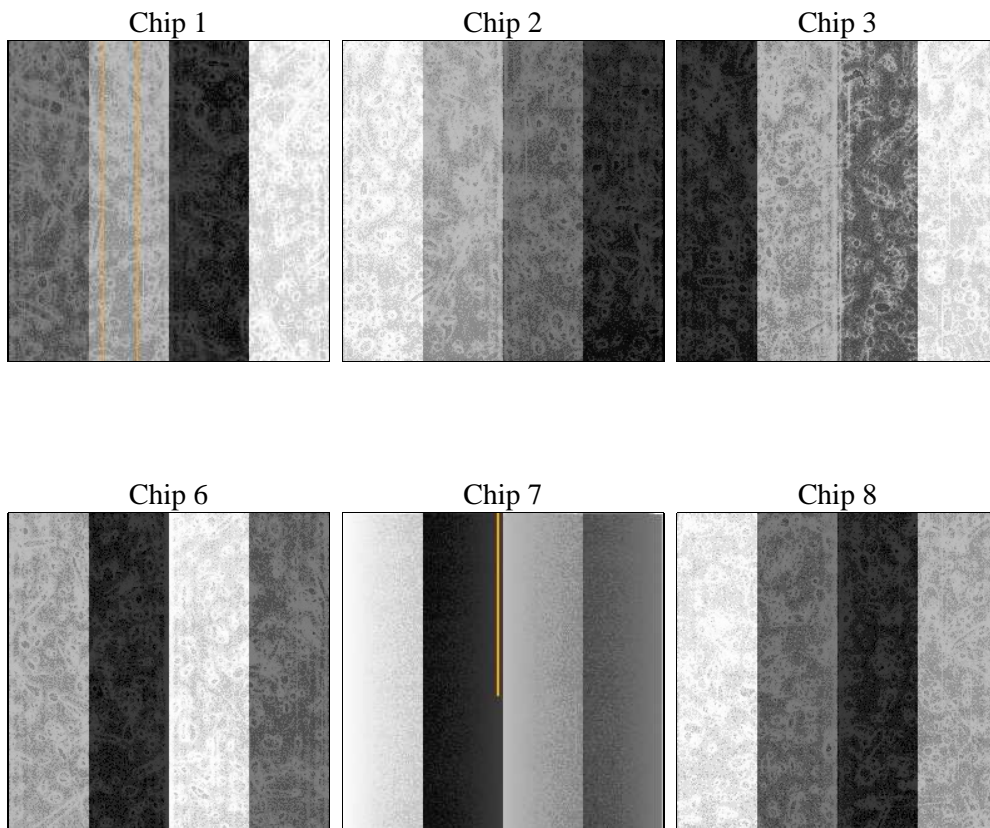
2 OBI

2.1 OBI

2.1.1 Images



2.1.2 Bias



2.1.3 Parameters

obi_num	0	Obi number	sched_exp_time	7500.000000	[s] Scheduled observation exposure time
ascdsver	8.4.5	Processing system revision	ontime	7660.7590368837	Sum of GTIs [s]
caldsver	4.5.1.1	 	ontime1	7664.0000071228	Sum of GTIs [s]
date	2012-08-26T20:40:12	Date and time of file creation	ontime2	7664.0000071228	Sum of GTIs [s]
revision	4	Processing version of data	ontime3	7660.7590368837	Sum of GTIs [s]
			ontime6	7657.5180766433	Sum of GTIs [s]
			ontime7	7660.7590368837	Sum of GTIs [s]
			ontime8	7664.0000071228	Sum of GTIs [s]
			l1events	352046	Number of level 1 events

2.1.4 Events

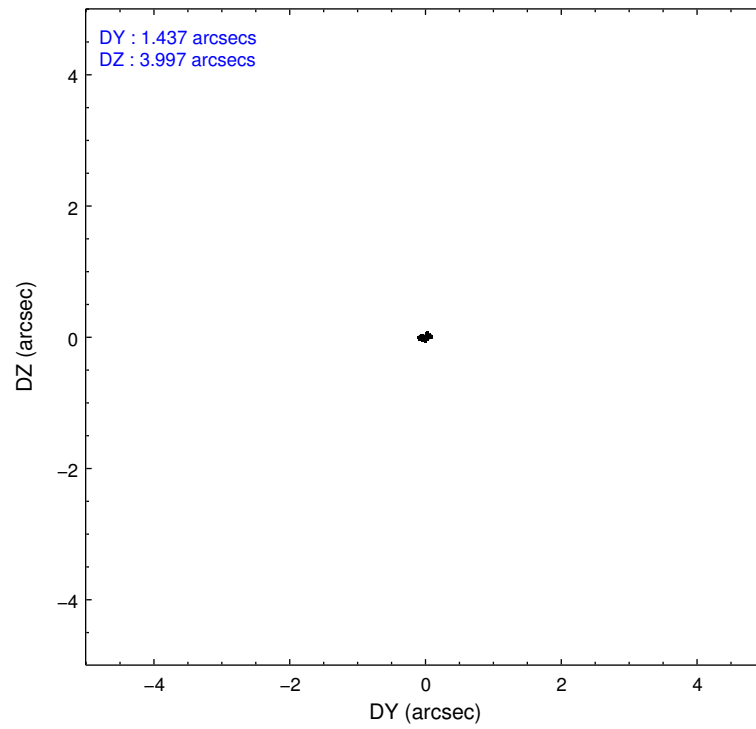
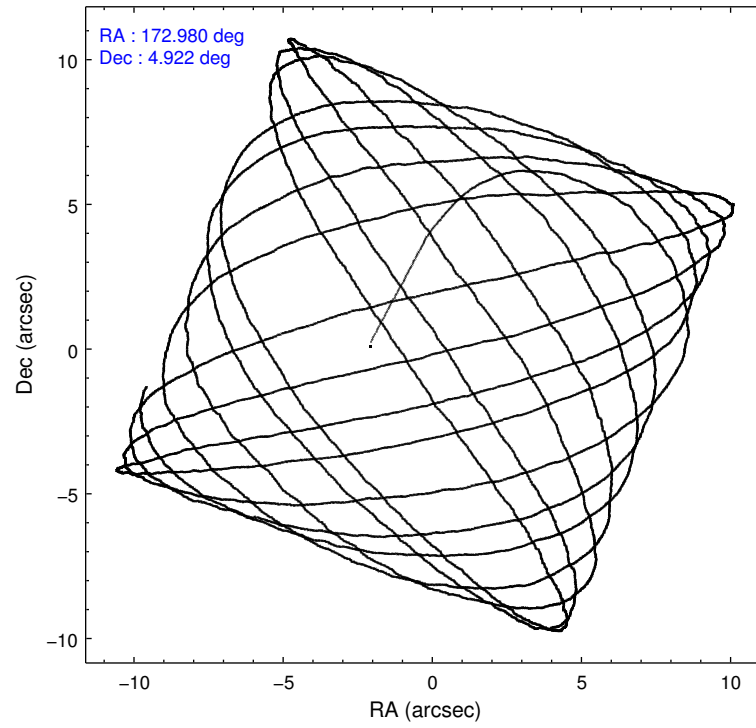
	ccd 1	ccd 2	ccd 3	ccd 6	ccd 7	ccd 8		ccd 1	ccd 2	ccd 3	ccd 6	ccd 7	ccd 8
level 1 events	51698	53200	54841	57349	66129	68829	grade 0 events	2566	2310	2489	2473	3151	4159
rejected events	45372	47663	49086	51450	37614	55776		4%	4%	4%	4%	4%	6%
rejected %	87%	89%	89%	89%	56%	81%	grade 1 events	21	27	29	32	67	38
								0%	0%	0%	0%	0%	0%
							grade 2 events	1284	1143	1127	1120	5867	2802
								2%	2%	2%	1%	8%	4%
							grade 3 events	658	560	589	599	2696	1477
								1%	1%	1%	1%	4%	2%
							grade 4 events	638	618	570	599	2704	1295
								1%	1%	1%	1%	4%	1%
							grade 5 events	1820	1653	1878	2134	6129	2573
								3%	3%	3%	3%	9%	3%
							grade 6 events	1276	990	1072	1194	14494	3505
								2%	1%	1%	2%	21%	5%
							grade 7 events	43435	45899	47087	49198	31021	52980
								84%	86%	85%	85%	46%	76%

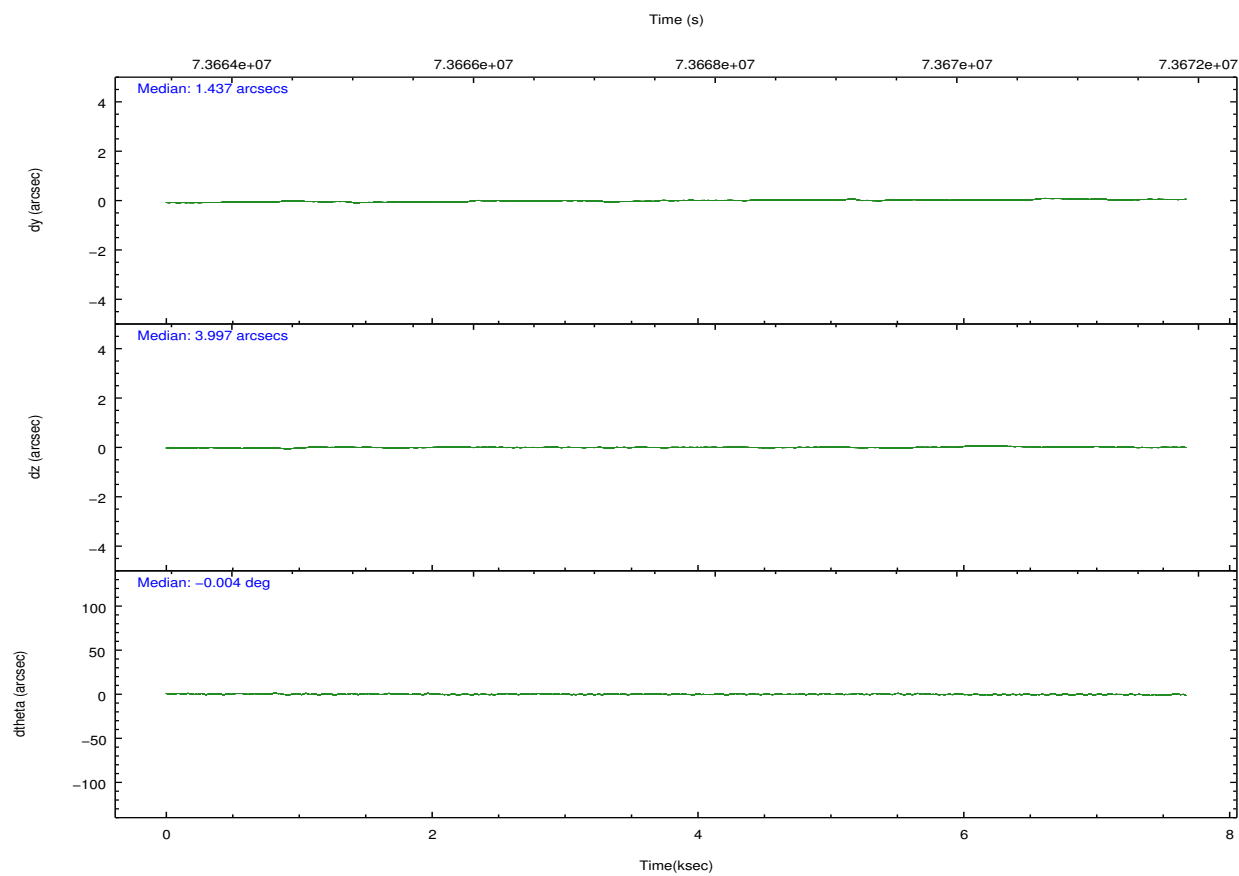
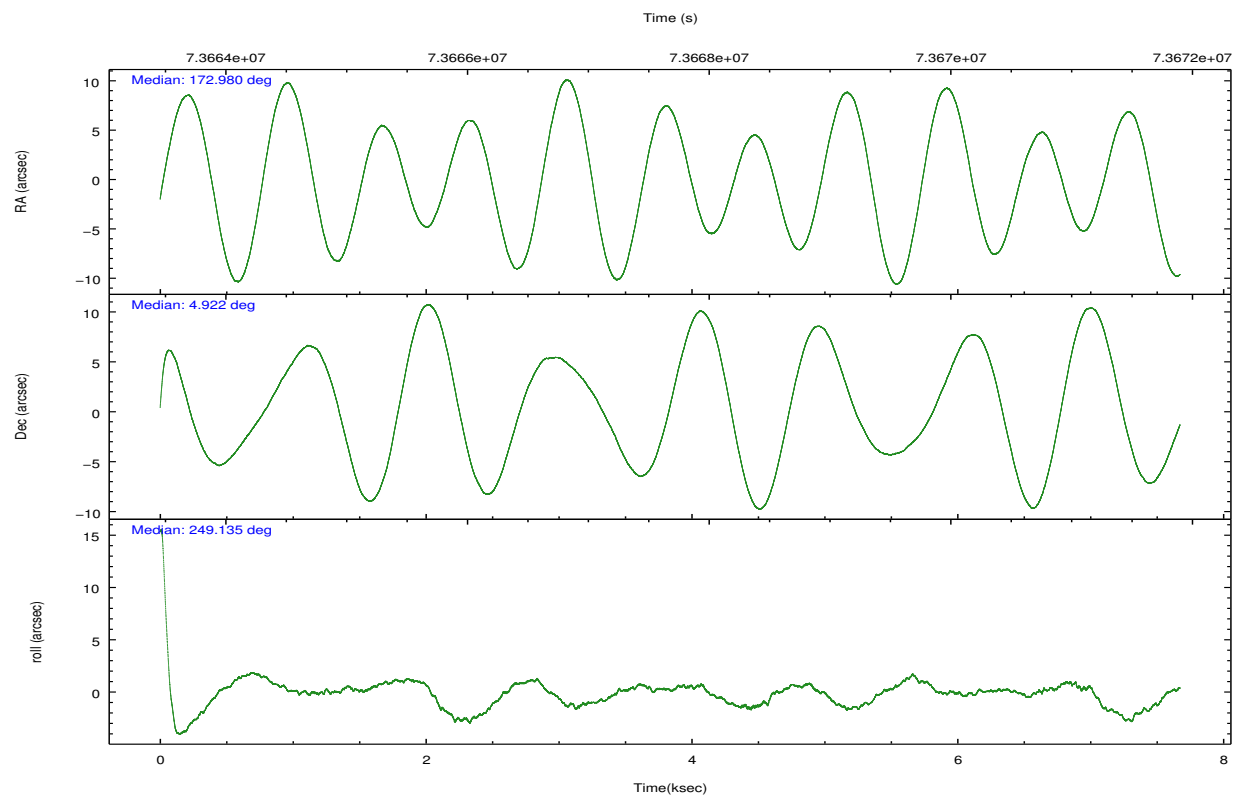
2.2 Compared Parameters

Parameter	Planned	Actual
Instrument	ACIS	ACIS
Detector	ACIS-123678	ACIS-123678
Grating	NONE	NONE
Data mode	FAINT	FAINT
Observation mode	POINTING	POINTING
[deg] Pointing RA	172.975714	172.9802084766592
[deg] Pointing Dec	4.948804	4.921694477978484
[deg] Pointing Roll	248.983514	249.1397883779865
[mm] SIM focus pos	-0.684267	-0.6828225247311905
[mm] SIM defocus	0	0.001444936568705701
[mm] SIM translation stage pos	-190.132523	-190.1425803651734
[mm] SIM translation stage offset	0	0.01005778216563158
[s] Observation start time (MET)	73664011.184000	73662856.463351
Observation start date	2000-05-02T14:12:27	2000-05-02T13:54:16
[s] Observation end time (MET)	73671511.184000	73672004.588687
Observation end date	2000-05-02T16:17:27	2000-05-02T16:26:44
Read mode	TIMED	TIMED

Parameter	Planned	Actual
Obspar format version number	7	7
Obspar file type	PREDICTED	ACTUAL
Obspar update status	NONE	UPDATED
Number of optional ACIS chips dropped	0	0
On-chip summing requested	N	N
Subarray requested	NONE	NONE
Alternating exposures requested	N	N
[s] Primary exposure time	0.000000	3.2

2.3 Aspect



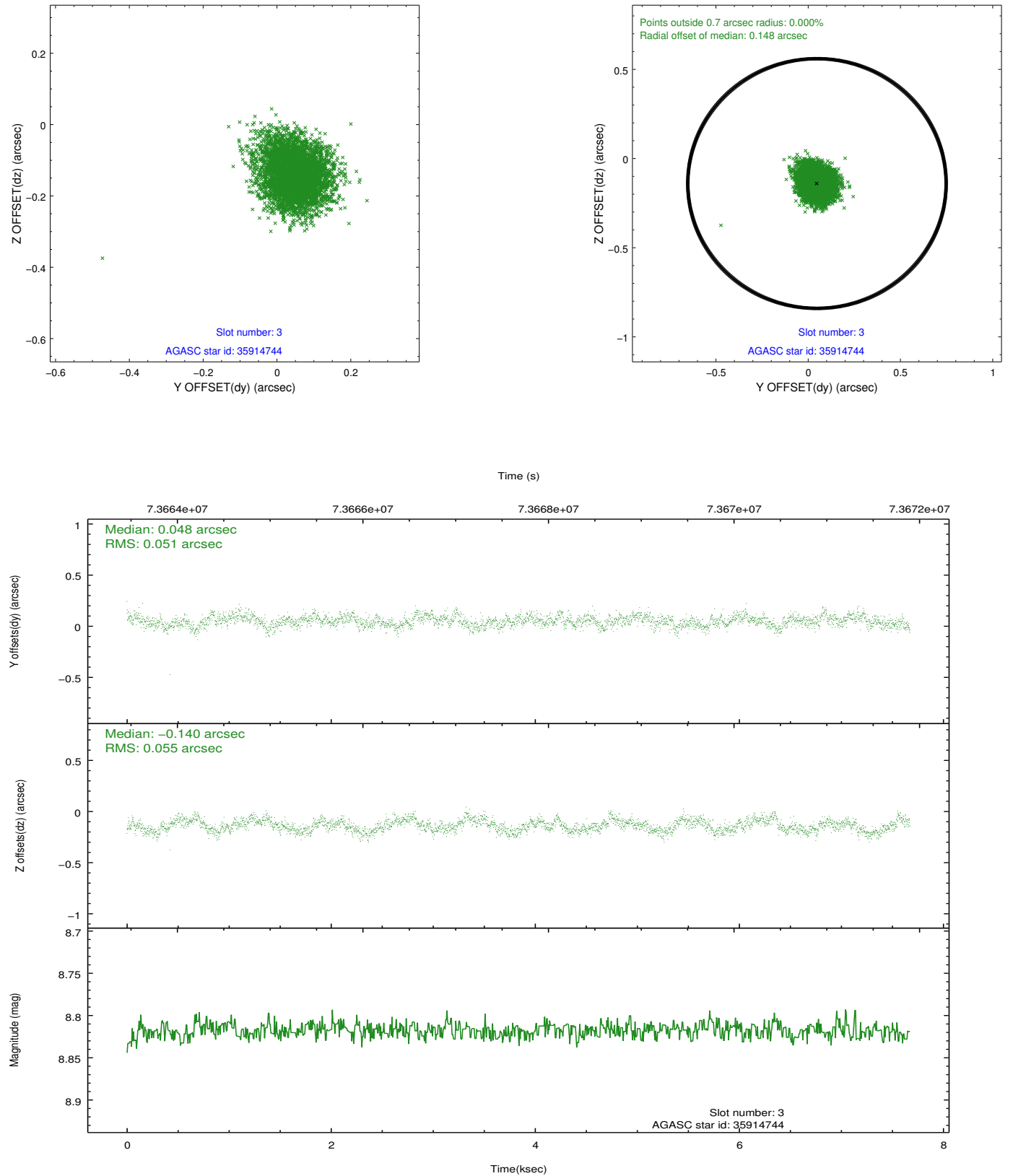


Slot Statistics

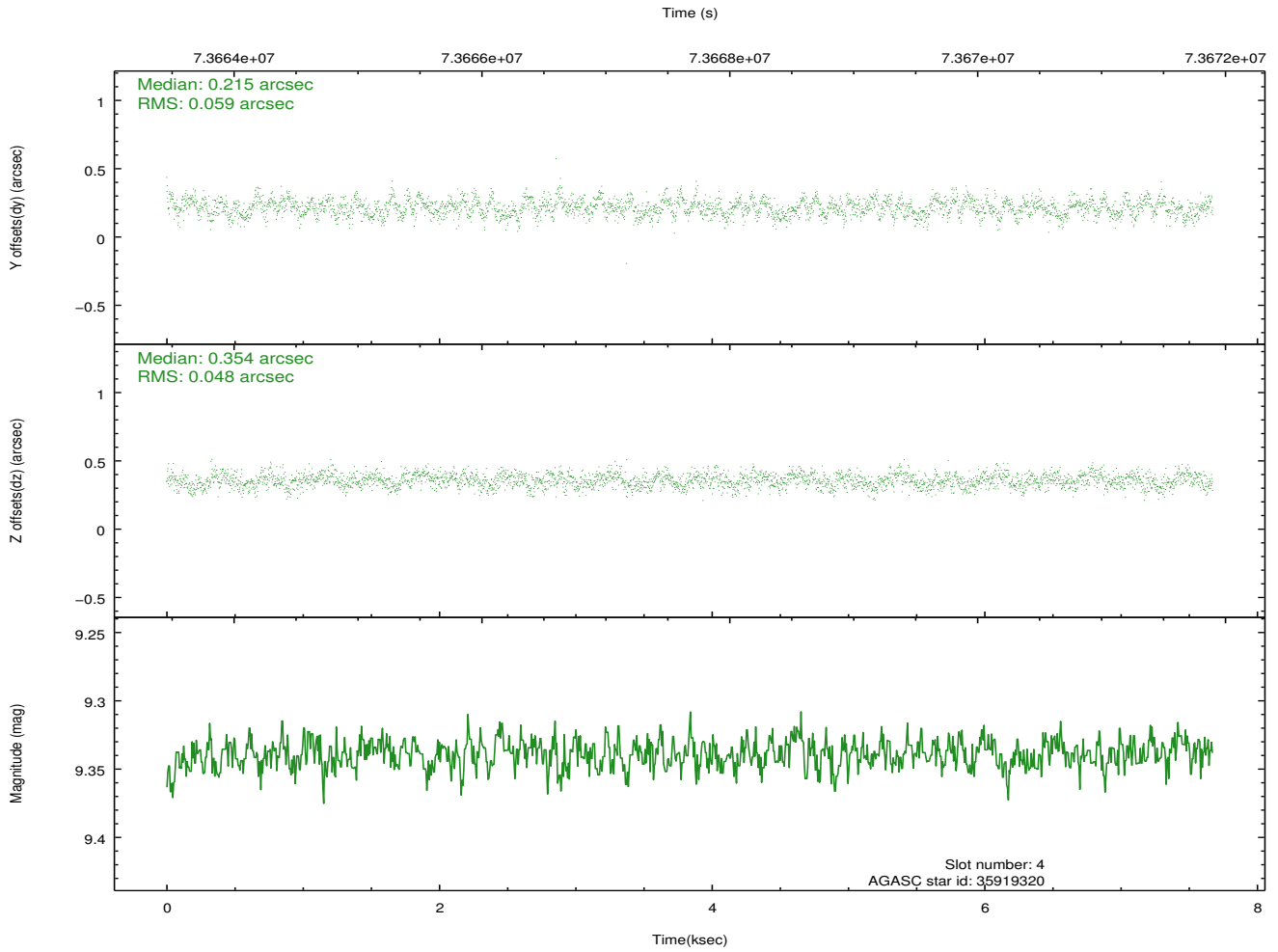
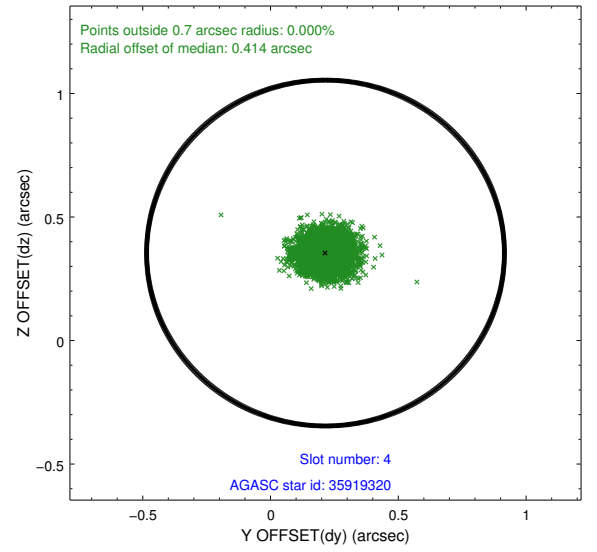
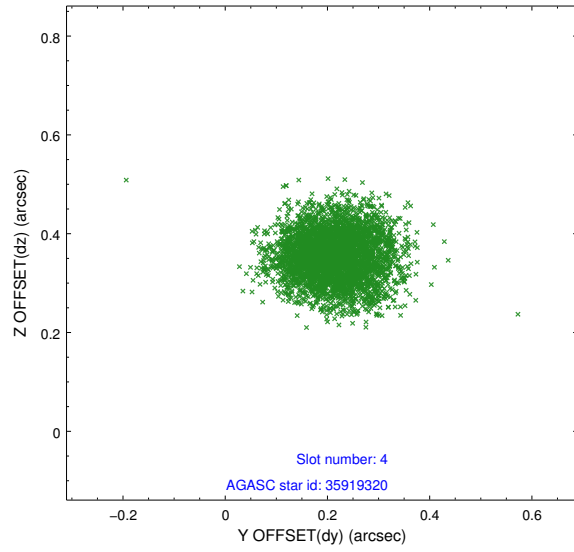
slot	status	id	mag	n_pts	med_dy	med_dz	dr1	dr2	ra	dec	mean_y	mean_z
0	FID	ACIS-S-1	7.19	1872	0.017	-0.005	0.006	0.011	0.000000	0.000000	941.98	-1720.68
1	FID	ACIS-S-5	7.24	1870	-0.012	0.028	0.006	0.010	0.000000	0.000000	-1806.58	176.21
2	FID	ACIS-S-6	7.36	1870	-0.026	-0.012	0.007	0.010	0.000000	0.000000	406.76	820.92
3	GUIDE	35914744	8.82	3739	0.048	-0.140	0.079	0.126	172.920503	4.544333	1430.19	337.43
4	GUIDE	35919320	9.34	3741	0.215	0.354	0.081	0.129	173.353240	4.134167	2251.48	2317.98
5	GUIDE	35398568	9.93	3740	-0.124	-0.182	0.114	0.187	172.451669	5.332070	-614.51	-2247.95
6	GUIDE	36308464	9.93	3741	-0.003	-0.129	0.121	0.194	172.623436	5.366324	-950.75	-1718.44
7	GUIDE	36309368	10.34	3737	-0.137	0.097	0.167	0.267	173.524716	5.402366	-2231.29	1250.60

2.4 Star Slots

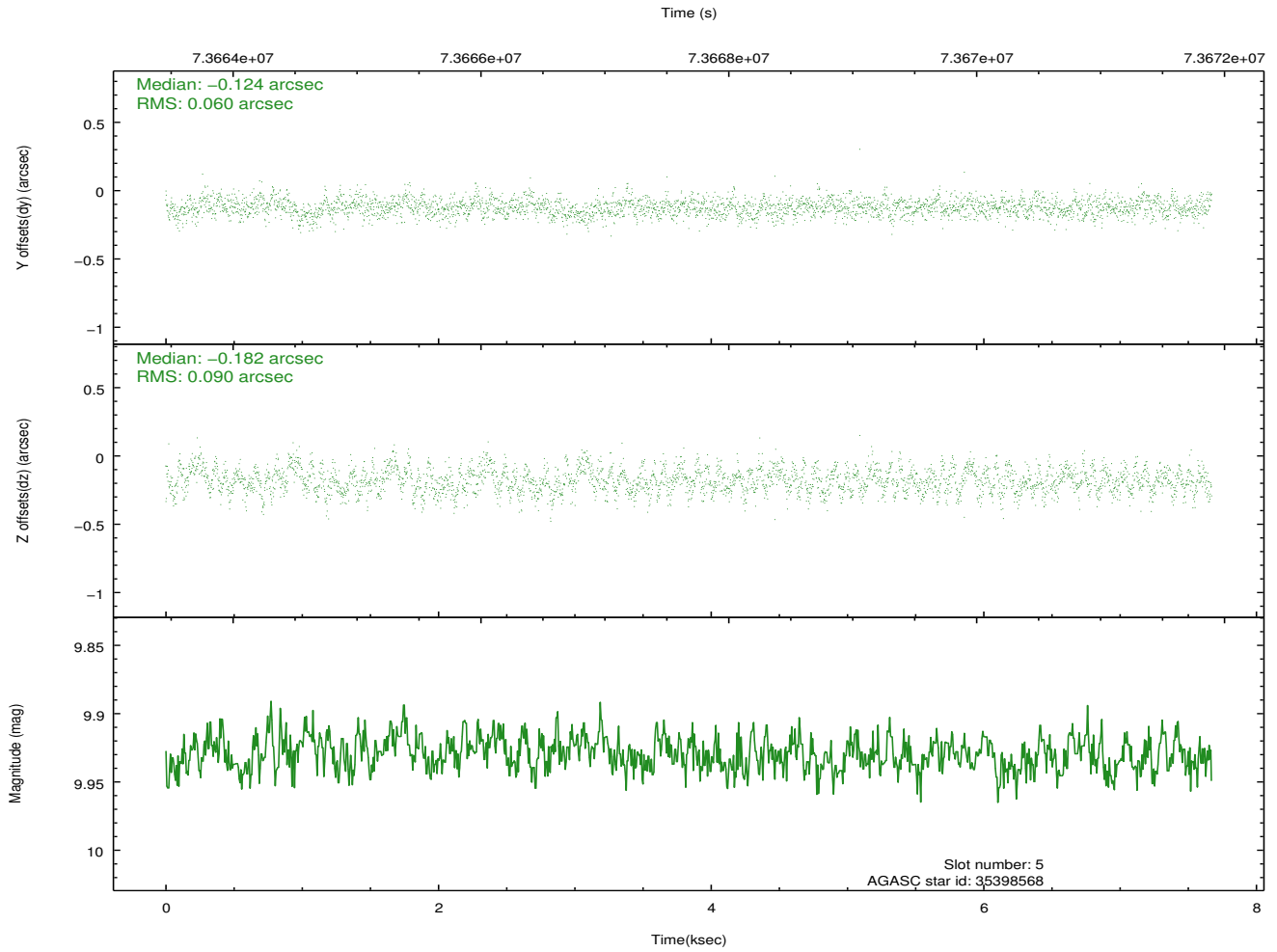
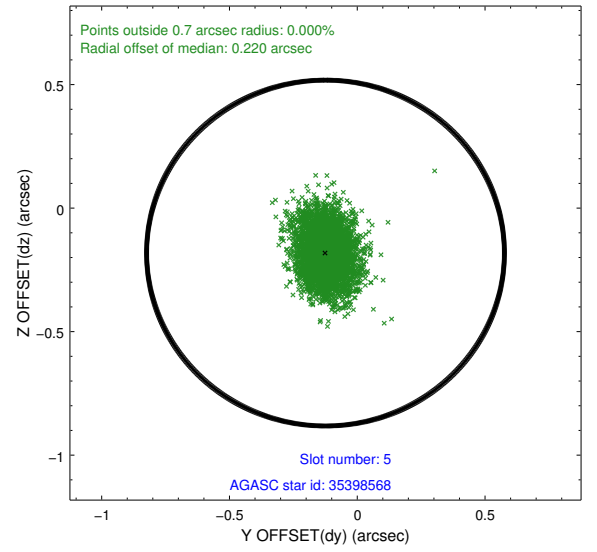
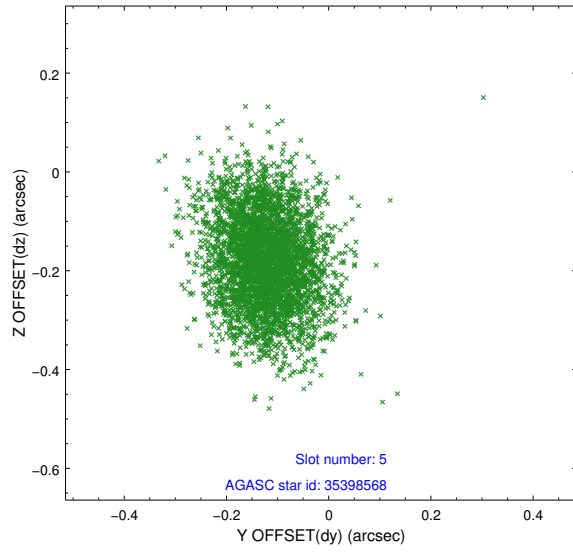
2.4.1 Slot 3



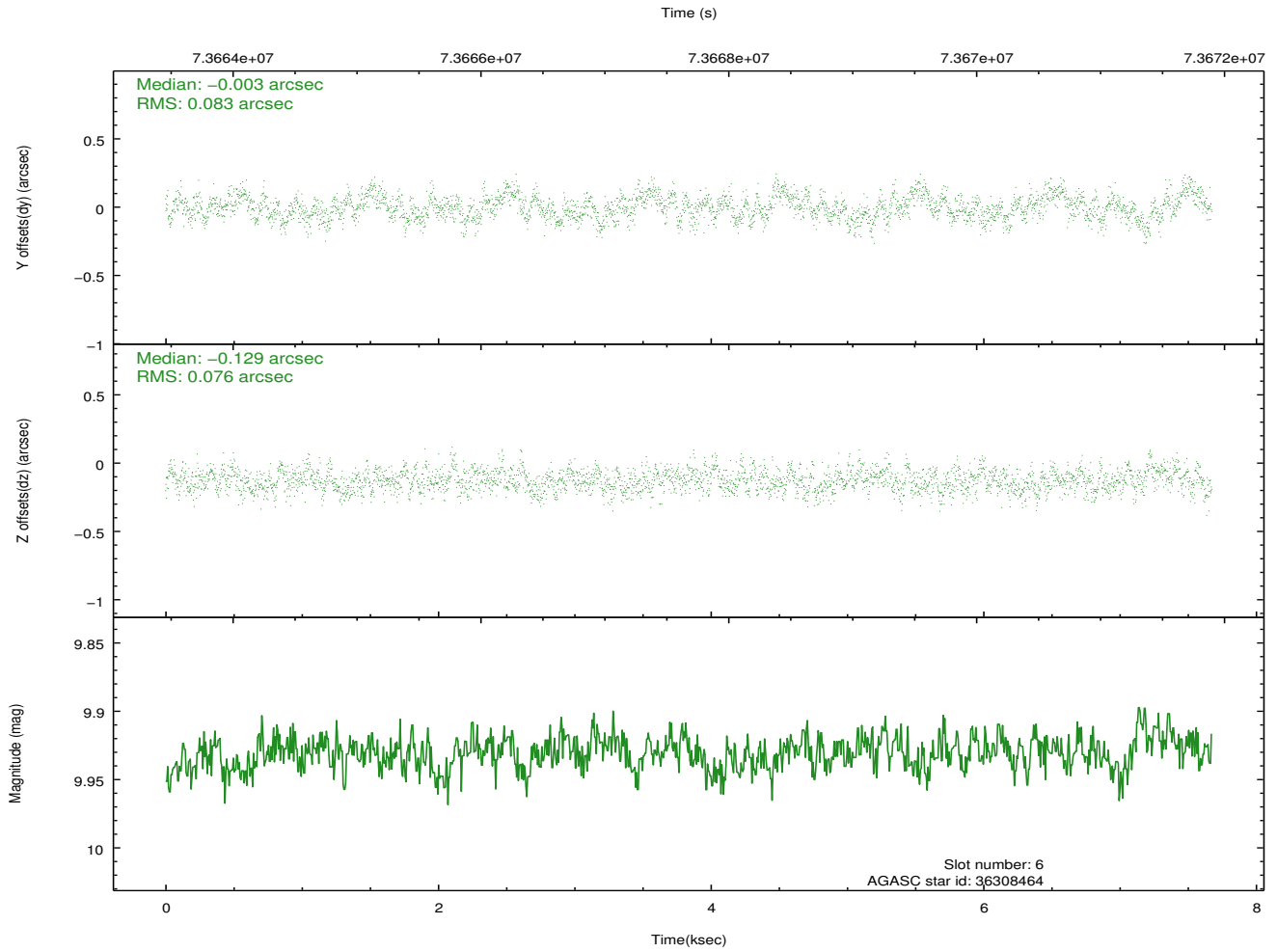
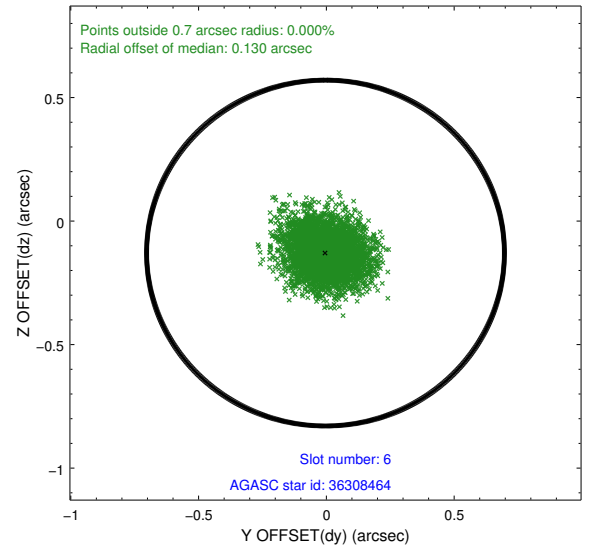
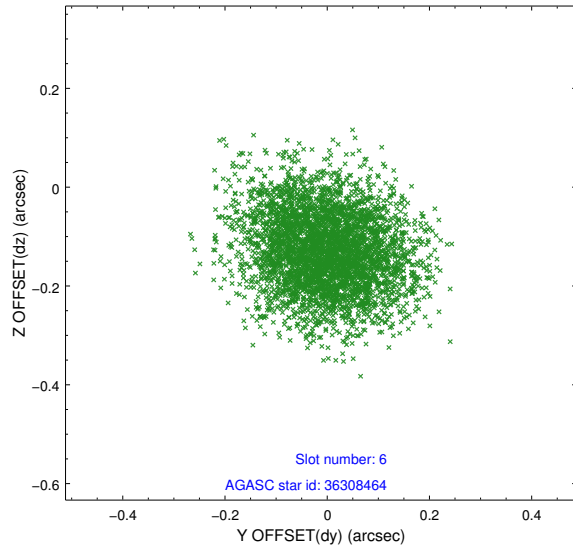
2.4.2 Slot 4



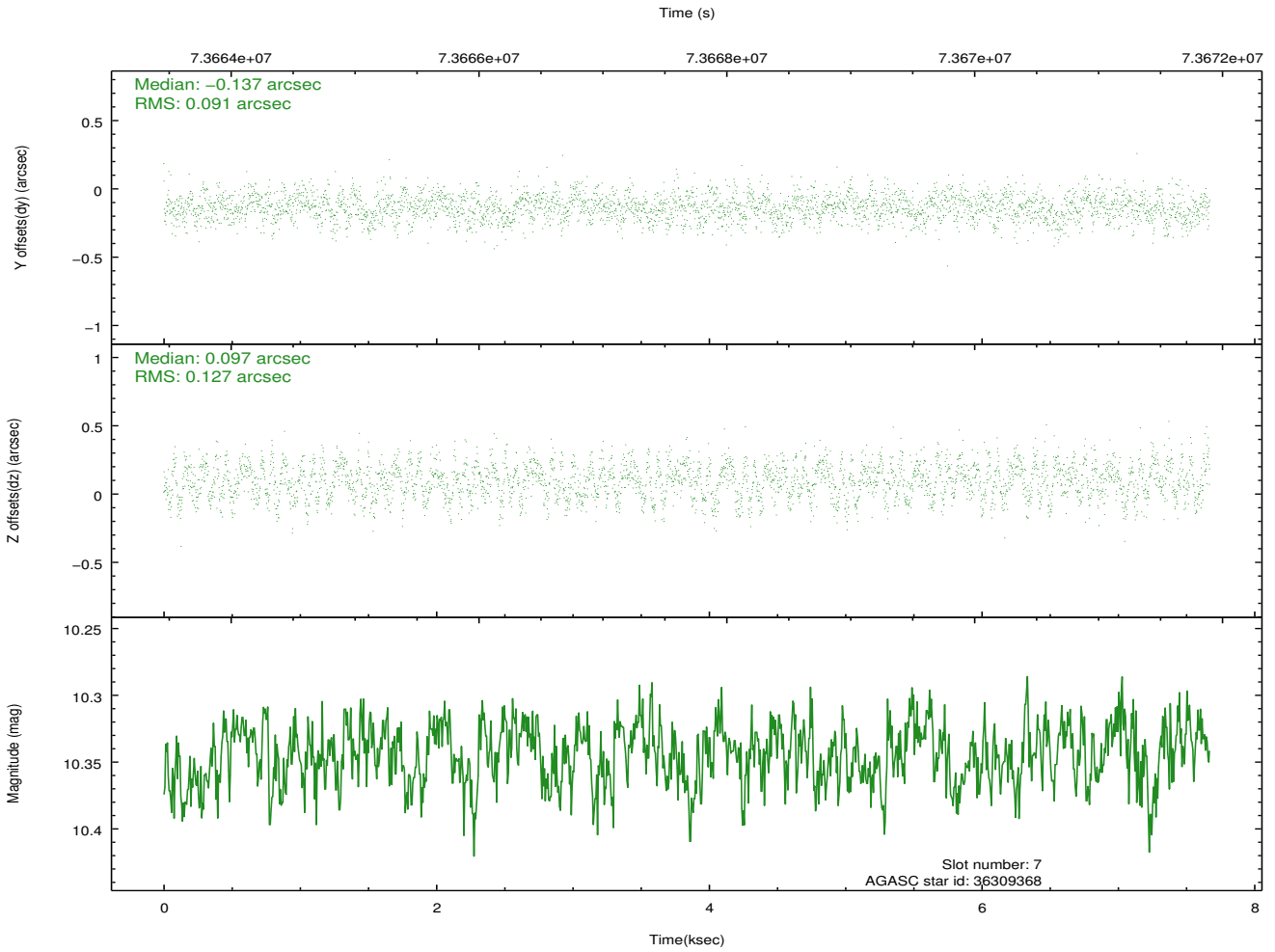
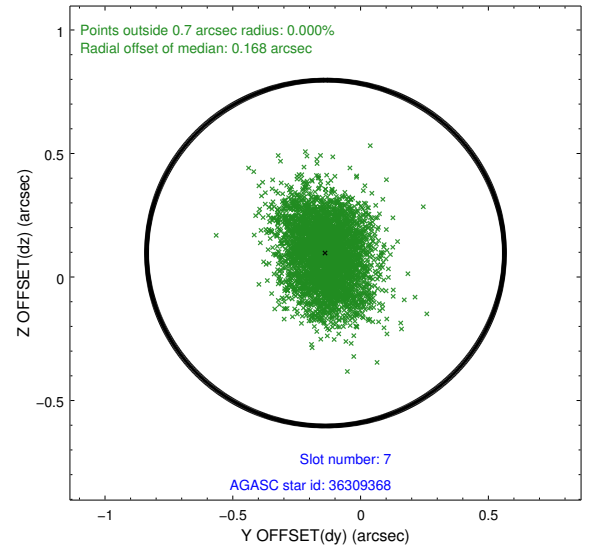
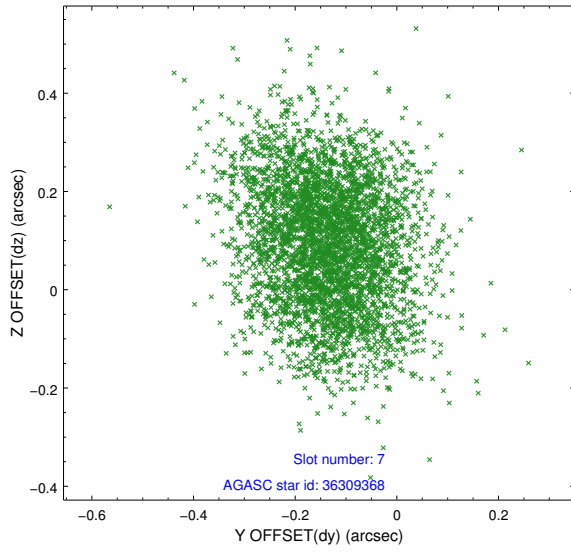
2.4.3 Slot 5



2.4.4 Slot 6

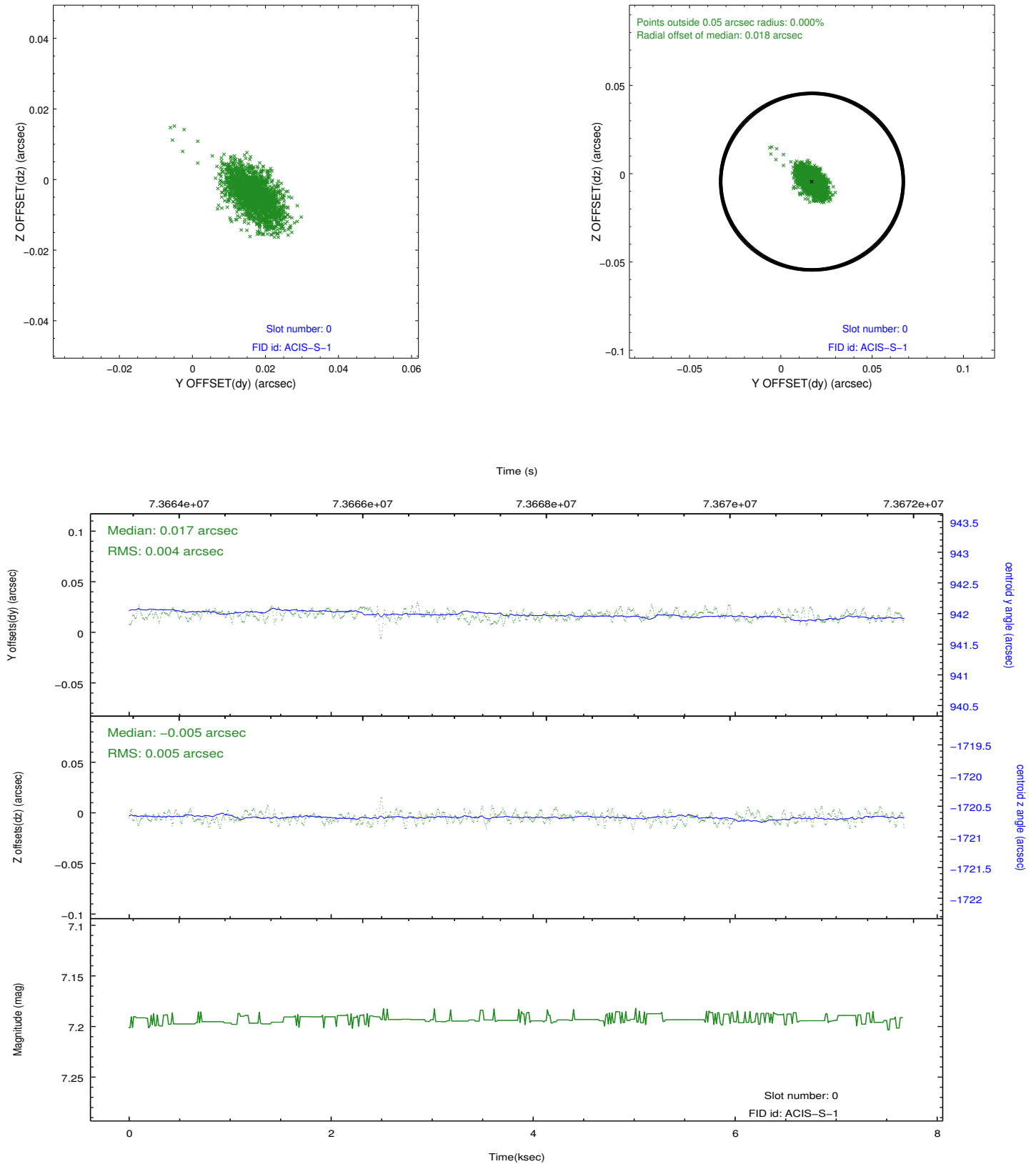


2.4.5 Slot 7

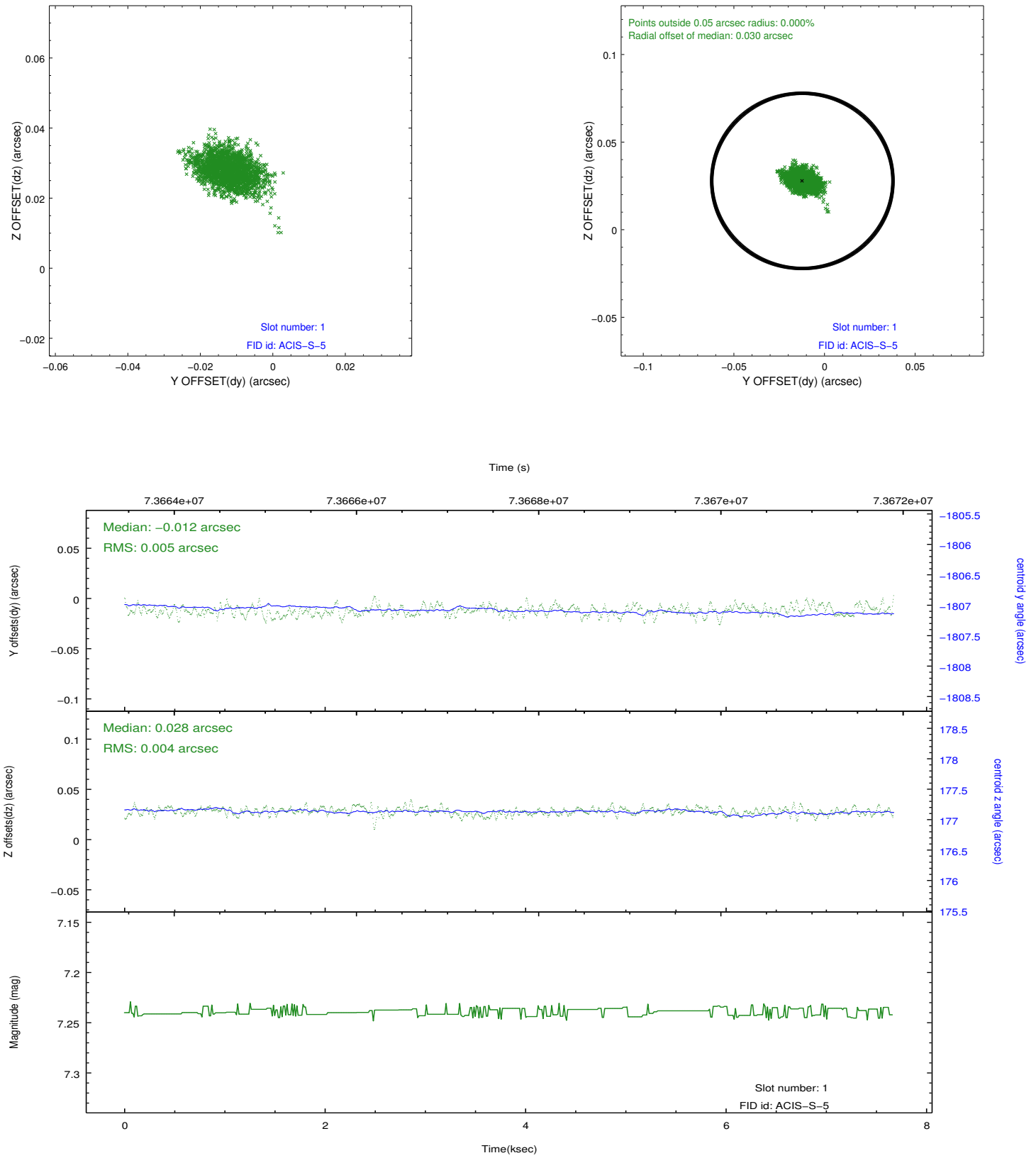


2.5 FID Slots

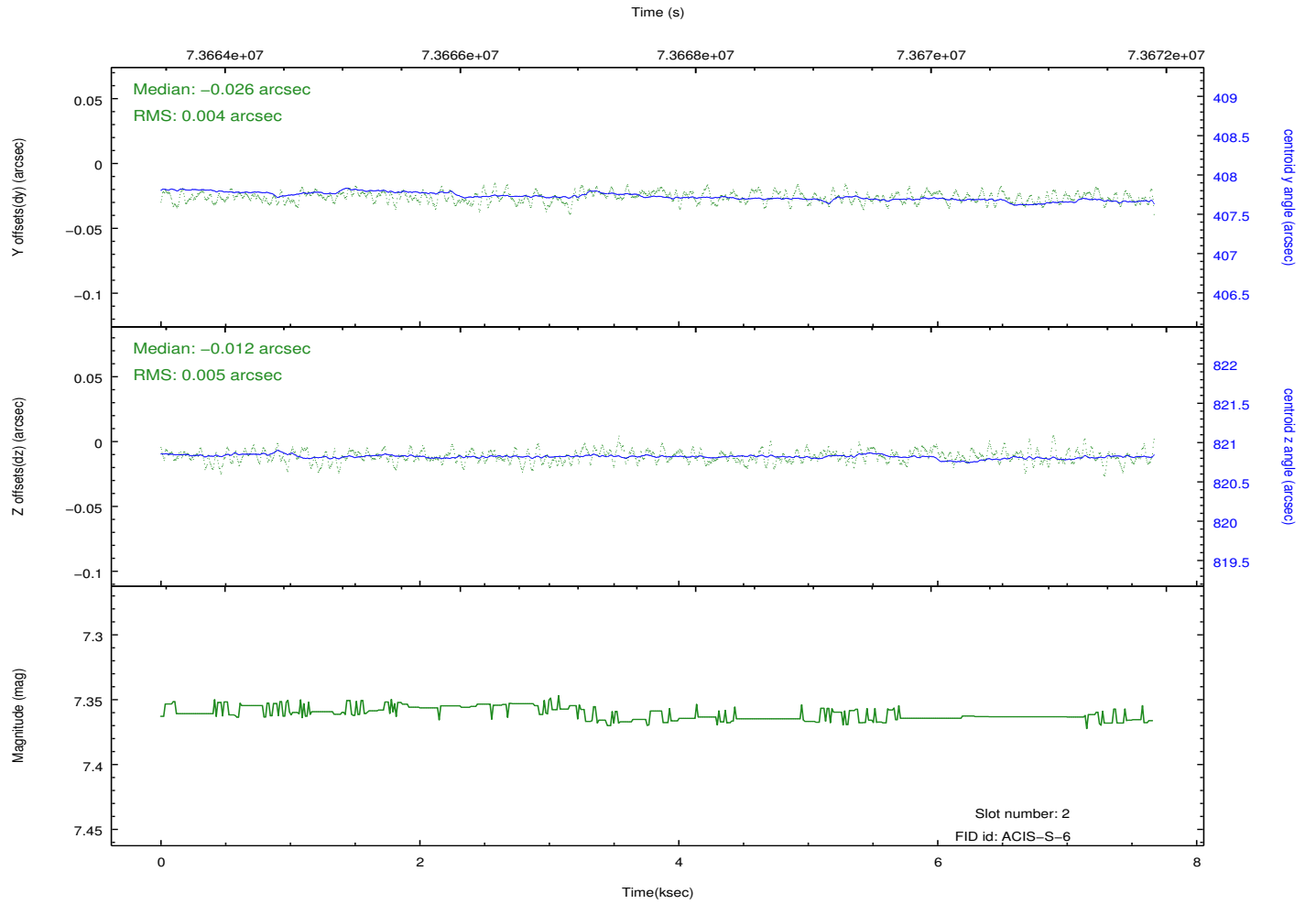
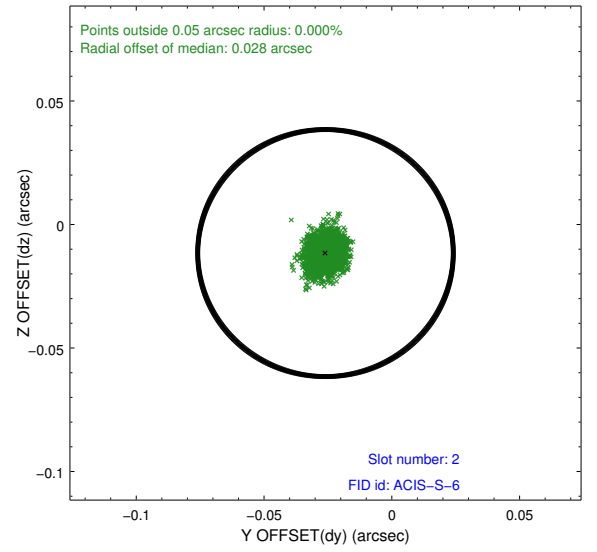
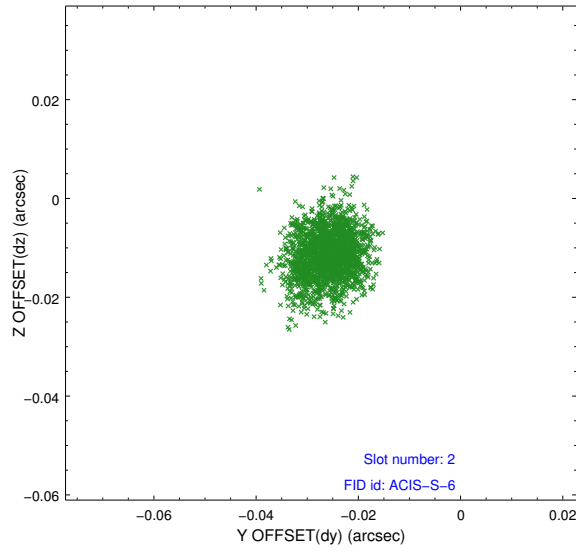
2.5.1 Slot 0



2.5.2 Slot 1



2.5.3 Slot 2



A Summary

A.1 Status

V&V Scientist	Jen Lauer
V&V Date (YYYY-MM-DD)	2012.08.29
V&V Edition	1
V&V Disposition and Status	OK
V&V Charge Time	7.66

A.2 Comments