

# V&V Reference Report

## L2 ASCDS Version : 7.6.10

Observation 421 - L2 Version 001  
Chandra X-Ray Center

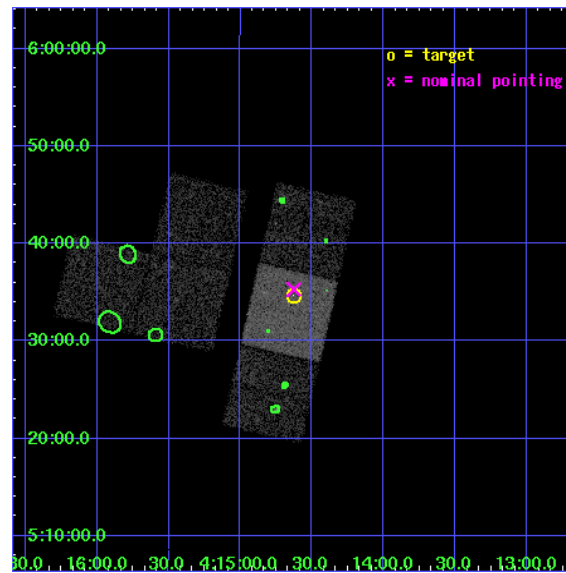
L2 Processing Date : Jun 5 2007

## Contents

<b>1</b>	<b>Front</b>	<b>2</b>
<b>2</b>	<b>OBI</b>	<b>3</b>
2.1	OBI . . . . .	3
2.1.1	Images . . . . .	3
2.1.2	Bias . . . . .	3
2.1.3	Parameters . . . . .	4
2.1.4	Events . . . . .	4
2.2	Compared Parameters . . . . .	5
2.3	Aspect . . . . .	6
2.4	Star Slots . . . . .	9
2.4.1	Slot 3 . . . . .	9
2.4.2	Slot 4 . . . . .	10
2.4.3	Slot 5 . . . . .	11
2.4.4	Slot 6 . . . . .	12
2.4.5	Slot 7 . . . . .	13
2.5	FID Slots . . . . .	14
2.5.1	Slot 0 . . . . .	14
2.5.2	Slot 1 . . . . .	15
2.5.3	Slot 2 . . . . .	16
<b>3</b>	<b>Point Sources</b>	<b>17</b>
<b>A</b>	<b>Summary</b>	<b>18</b>
A.1	Status . . . . .	18
A.2	Comments . . . . .	18

# 1 Front

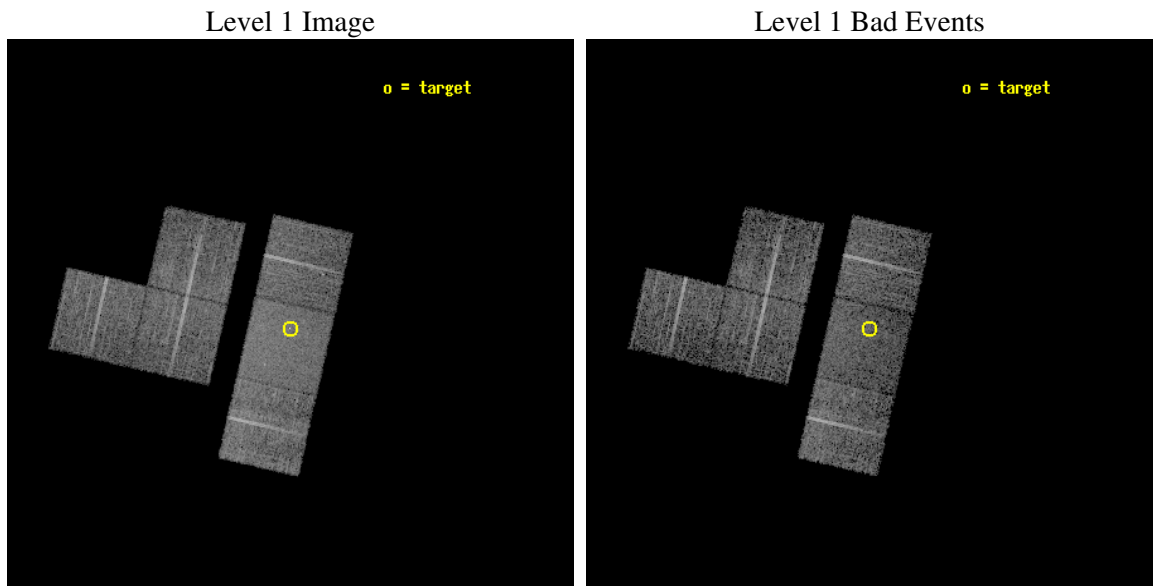
seq_num	700093
obs_id	421
title	A SURVEY OF GRAVITATIONALLY LENSED QUASARS
observer	Prof. Gordon Garmire
object	MITG J0414+0534
dtcycle	0
cycle	P
ra_targ	63.657083
dec_targ	5.578333
ra_nom	63.656621898353
dec_nom	5.5882114178823
roll_nom	102.92554849623
revision	2
ontime	7340.8000068367
livetime	7247.846377051
ontime1	7340.8000068367
ontime2	7340.8000068367
ontime3	7340.8000068367
ontime6	7340.8000068367
ontime7	7340.8000068367
ontime8	7340.8000068367
l2events	43740



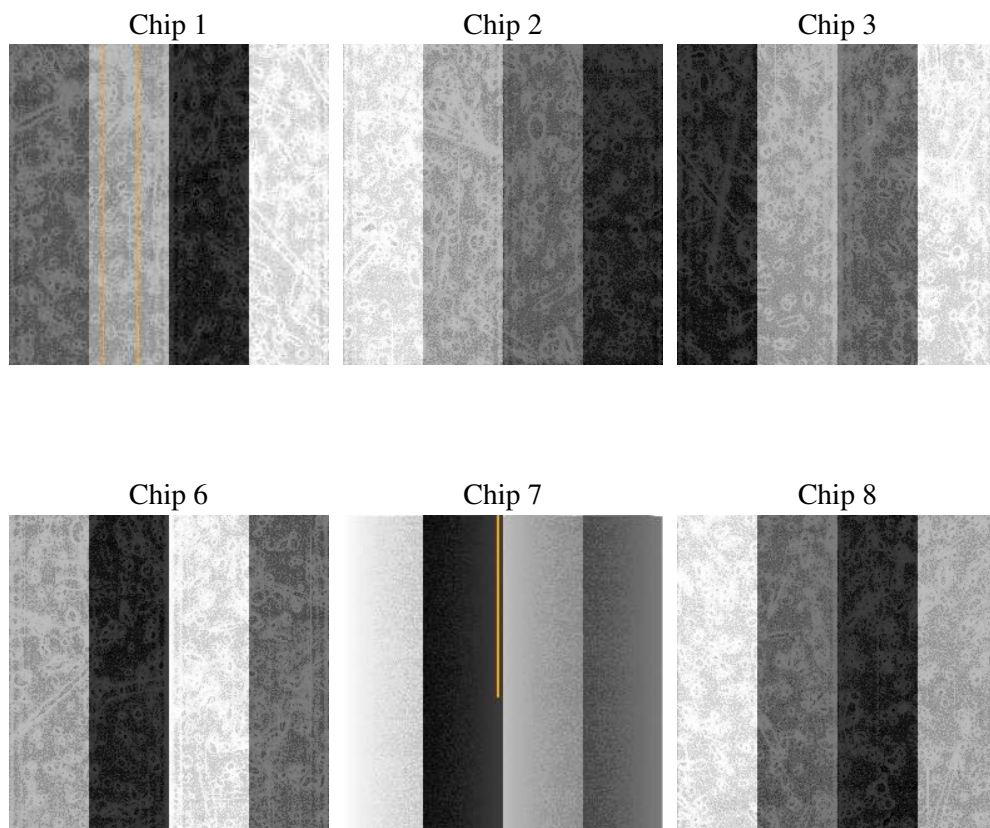
## 2 OBI

### 2.1 OBI

#### 2.1.1 Images



#### 2.1.2 Bias



### 2.1.3 Parameters

obi_num	1
ascdsver	7.6.10
caldbver	3.4.0
date	2007-06-05T04:08:55
revision	2

sched_exp_time	7390.000000
ontime	7340.8000068367
ontime1	7340.8000068367
ontime2	7340.8000068367
ontime3	7340.8000068367
ontime6	7340.8000068367
ontime7	7340.8000068367
ontime8	7340.8000068367
l1events	268439

### 2.1.4 Events

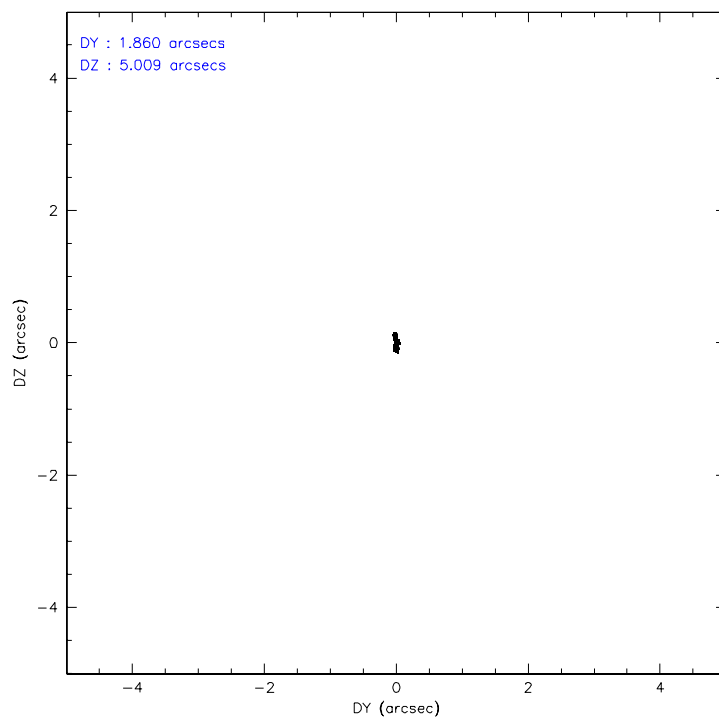
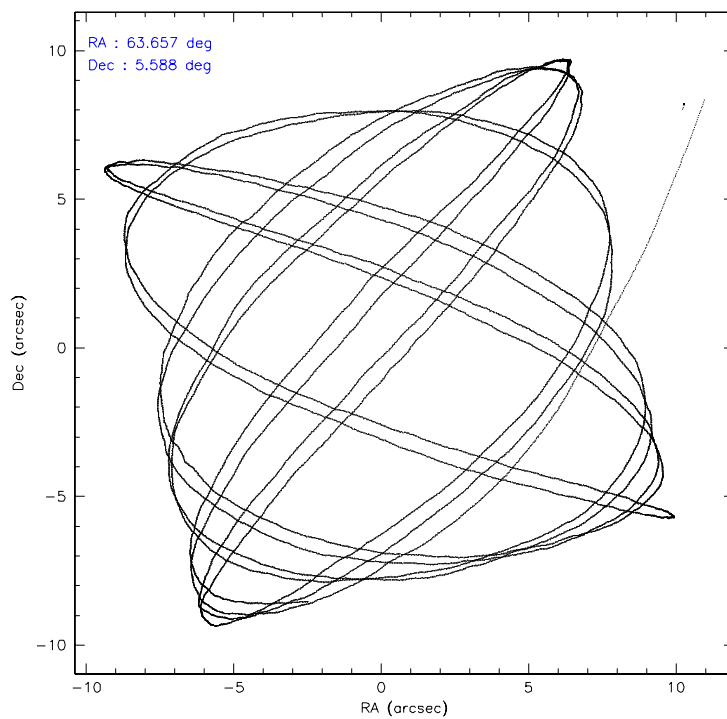
	ccd 1	ccd 2	ccd 3	ccd 6	ccd 7	ccd 8
level 1 events	39985	40362	40879	41800	52473	52940
rejected events	34891	35750	36012	36746	29907	42074
rejected %	87%	88%	88%	87%	56%	79%

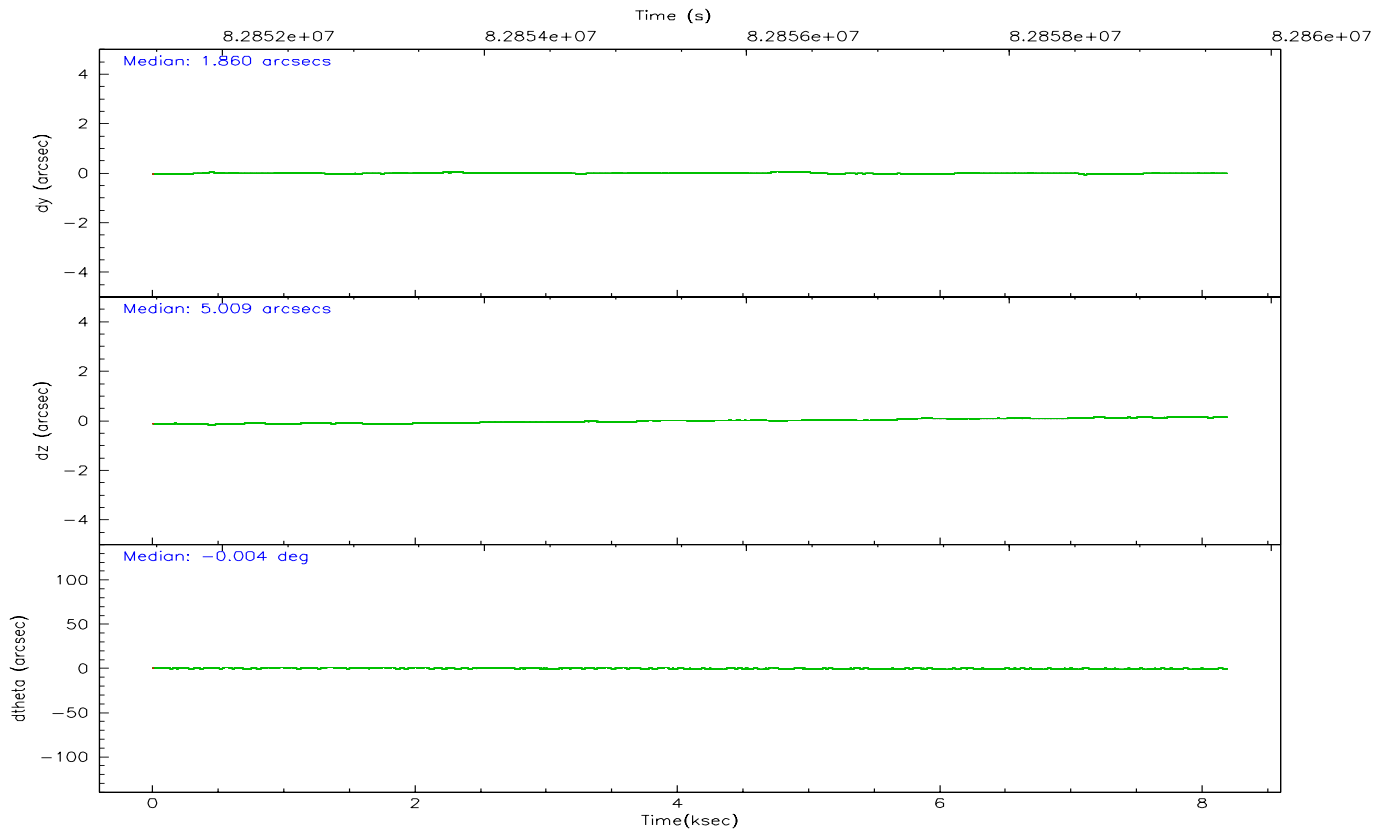
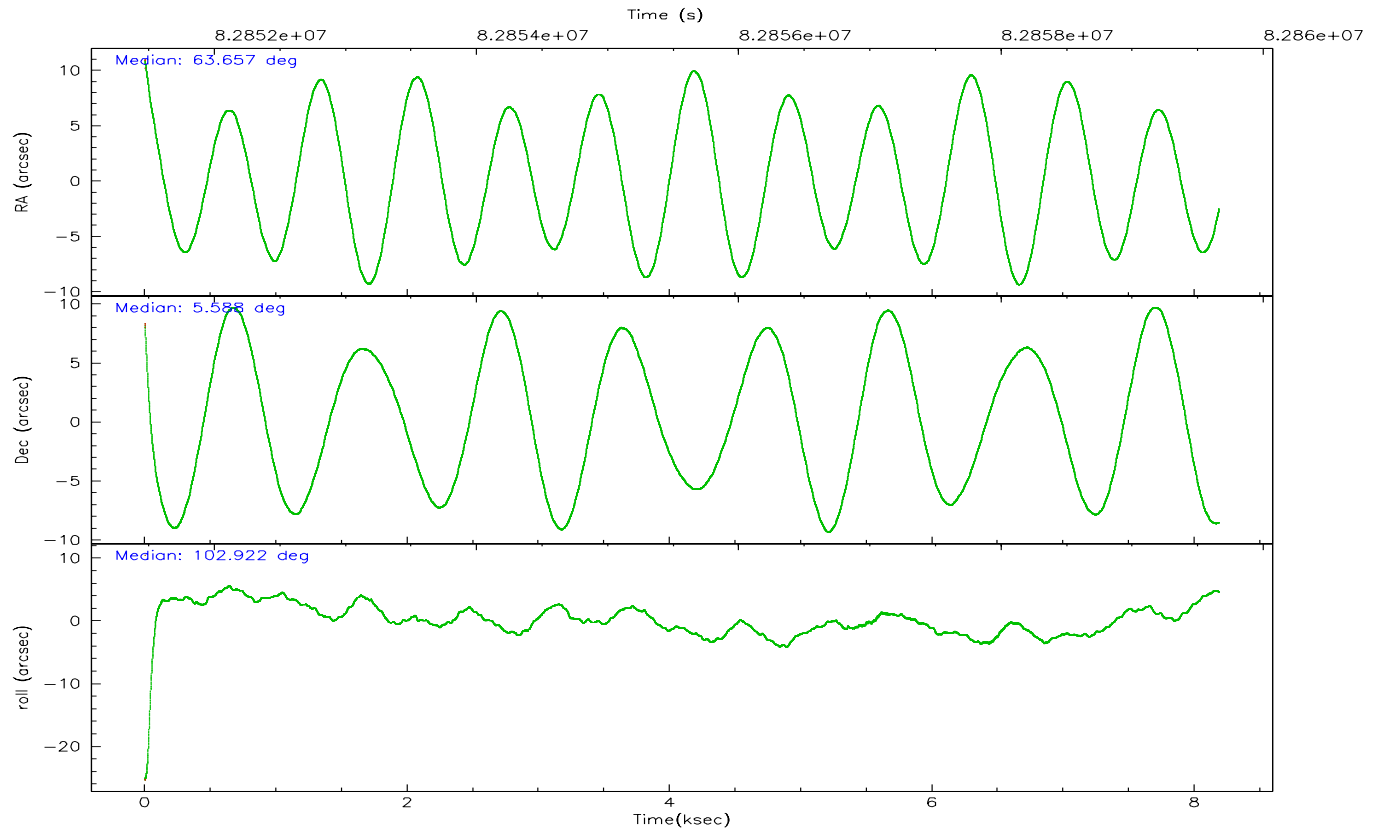
	ccd 1	ccd 2	ccd 3	ccd 6	ccd 7	ccd 8
grade 0 events	2015	1914	2129	2160	2333	3643
	5%	4%	5%	5%	4%	6%
grade 1 events	19	14	17	17	45	40
	0%	0%	0%	0%	0%	0%
grade 2 events	1063	991	1003	996	4493	2194
	2%	2%	2%	2%	8%	4%
grade 3 events	520	461	440	491	2060	1321
	1%	1%	1%	1%	3%	2%
grade 4 events	517	435	427	470	2154	1196
	1%	1%	1%	1%	4%	2%
grade 5 events	1613	1327	1532	1644	4983	2126
	4%	3%	3%	3%	9%	4%
grade 6 events	984	816	874	938	11550	2519
	2%	2%	2%	2%	22%	4%
grade 7 events	33254	34404	34457	35084	24855	39901
	83%	85%	84%	83%	47%	75%

## 2.2 Compared Parameters

Parameter	Planned	Actual	Parameter	Planned	Actual
Instrument	ACIS	ACIS	Obspar format version number	6	6
Detector	ACIS-123678	ACIS-123678	Obspar file type	PREDICTED	ACTUAL
Grating	NONE	NONE	Obspar update status	NONE	UPDATED
Data mode	FAINT	FAINT	Number of optional ACIS chips dropped	0	0
Observation mode	POINTING	POINTING	On-chip summing requested	N	N
Pointing RA	63.675507	63.65662189835295	Subarray requested	NONE	NONE
Pointing Dec	5.568309	5.588211417882258	Alternating exposures requested	N	N
Pointing Roll	102.767134	102.9255484962265	Primary exposure time	3.200000	3.2
SIM focus pos (mm)	-0.684267	-0.6828225247311905			
SIM defocus (mm)	0	0.001444936568705701			
SIM translation stage pos (mm)	-190.132523	-190.1425803651734			
SIM translation stage offset (mm)	0	0.01005778216563158			
Observation start time	82852275.184000	82850912.72774			
Observation start date	2000-08-16T22:30:11	2000-08-16T22:08:32			
Observation end time	82859665.184000	82860145.928086			
Observation end date	2000-08-17T00:33:21	2000-08-17T00:42:25			
Read mode	TIMED	TIMED			

## 2.3 Aspect





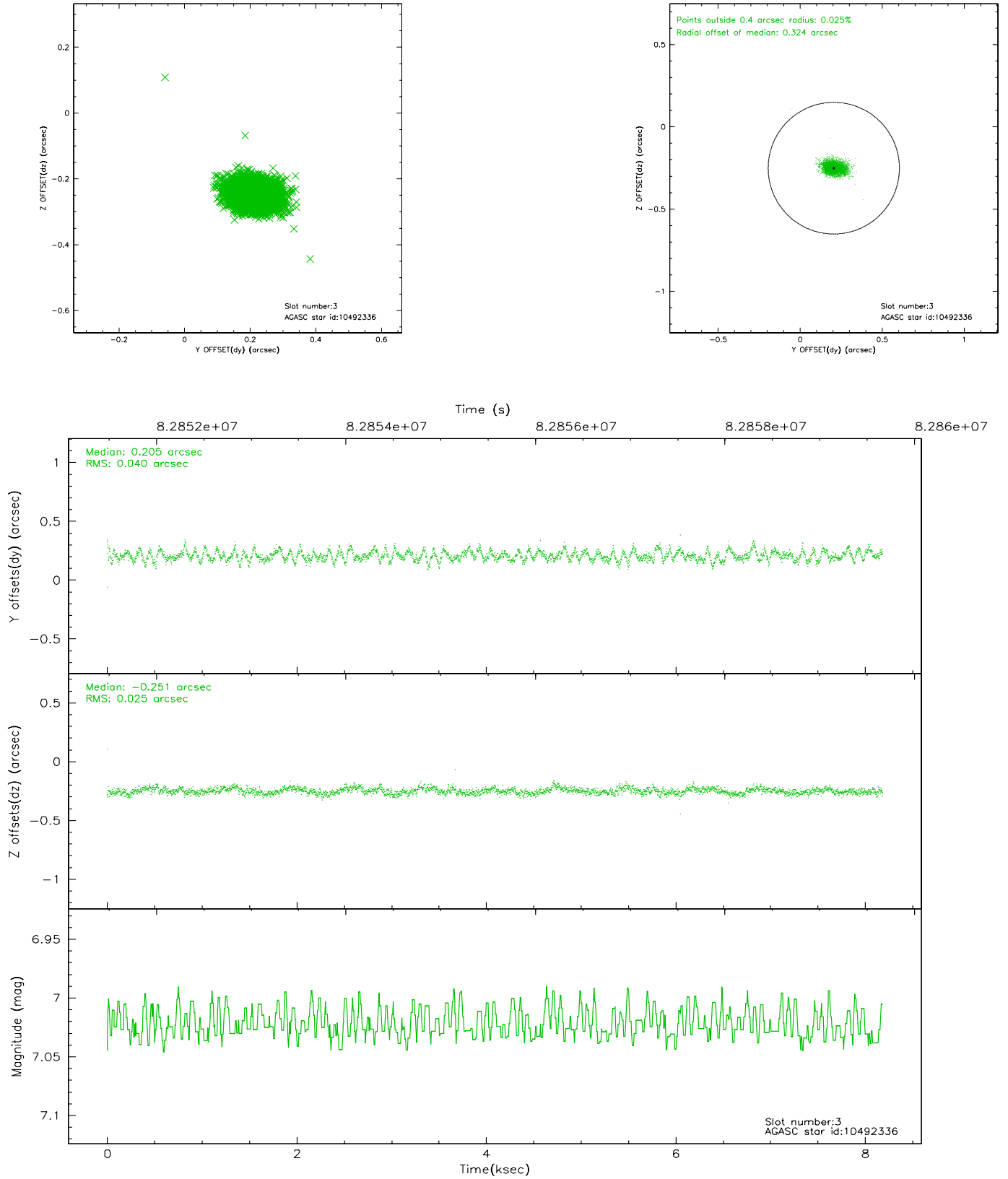
### Slot Statistics

slot	status	id	mag	n_pts	med_dy	med_dz	dr1	dr2	ra	dec	mean_y	mean_z
0	FID	ACIS-S-2	7.11	1998	-0.022	0.022	0.006	0.011	0.000000	0.000000	-754.48	-1726.05
1	FID	ACIS-S-4	7.21	1998	-0.053	0.005	0.005	0.009	0.000000	0.000000	2158.45	181.73
2	FID	ACIS-S-5	7.23	1997	0.044	-0.018	0.006	0.010	0.000000	0.000000	-1806.39	176.13
3	GUIDE	10492336	7.02	3995	0.205	-0.251	0.049	0.083	63.181049	5.030869	-1494.27	2156.70
4	GUIDE	10492808	9.29	3995	-0.319	0.111	0.075	0.121	63.555055	6.190155	2278.02	-73.28
5	GUIDE	10493912	9.38	3993	0.175	-0.021	0.092	0.148	63.610162	5.180568	-1308.77	537.01
6	GUIDE	10493872	9.41	3995	0.180	-0.036	0.084	0.135	63.703184	5.387990	-655.07	46.99
7	GUIDE	10493112	10.01	3992	-0.245	0.194	0.139	0.219	64.100101	6.243602	2035.56	-2018.81

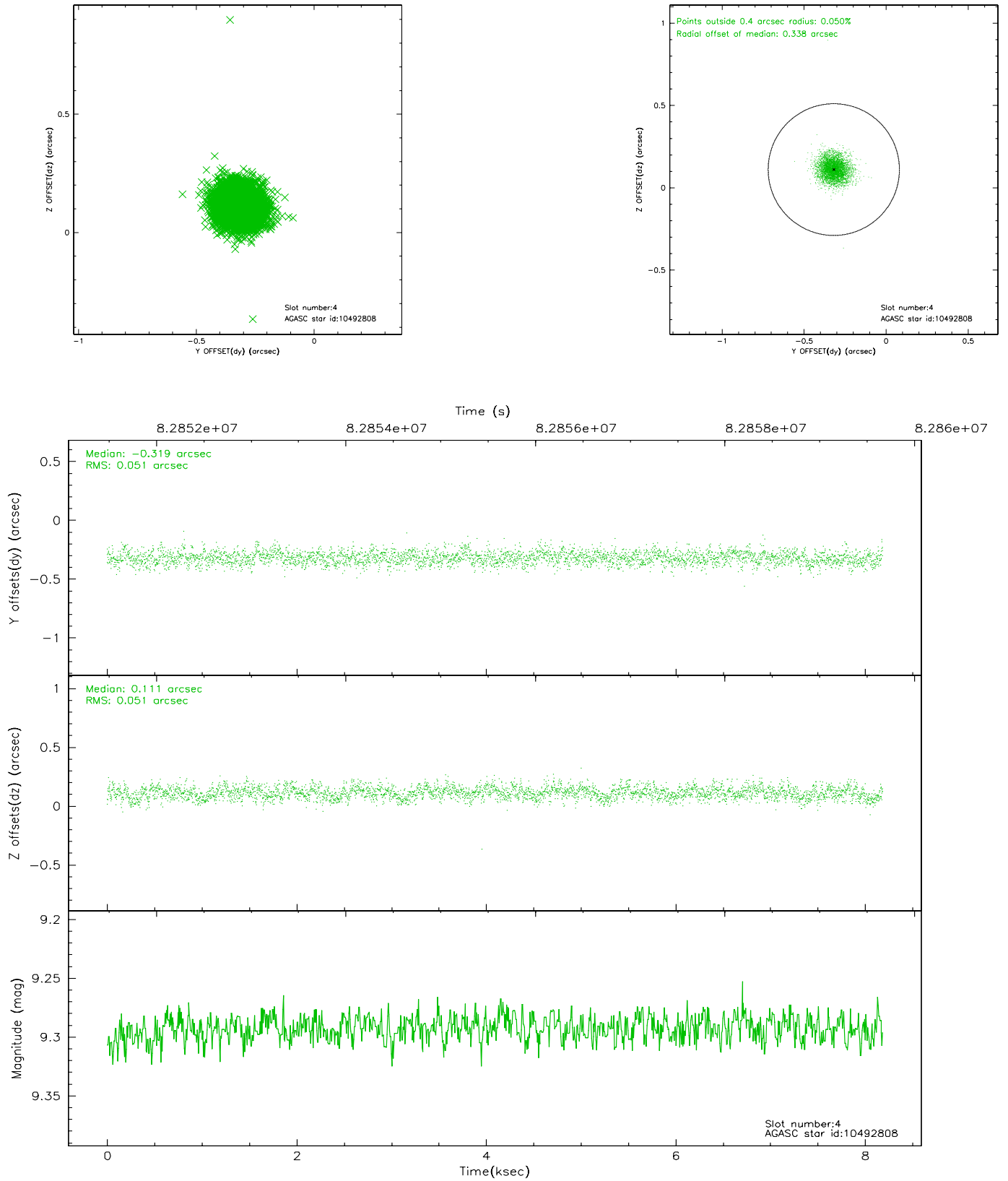


## 2.4 Star Slots

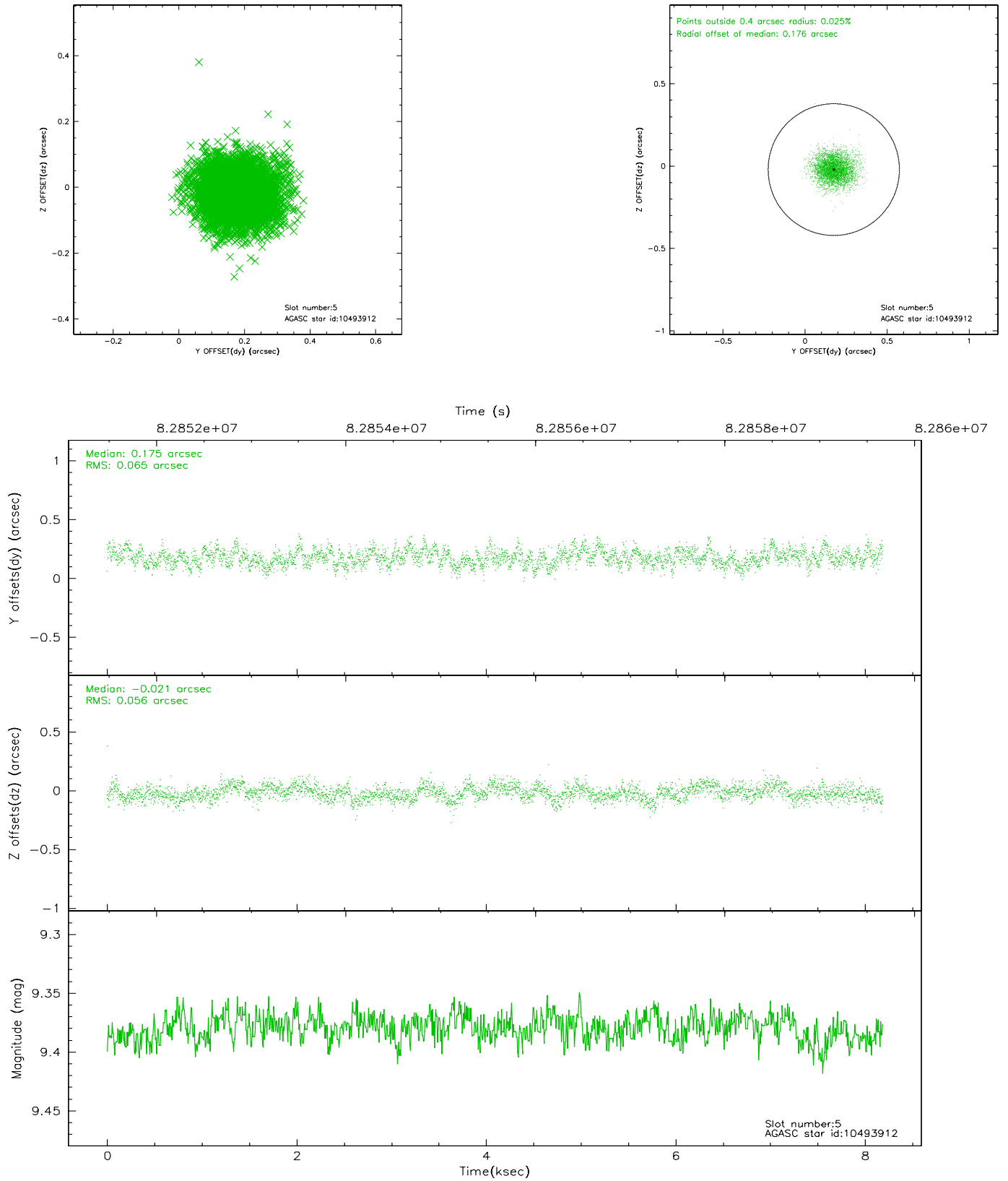
### 2.4.1 Slot 3



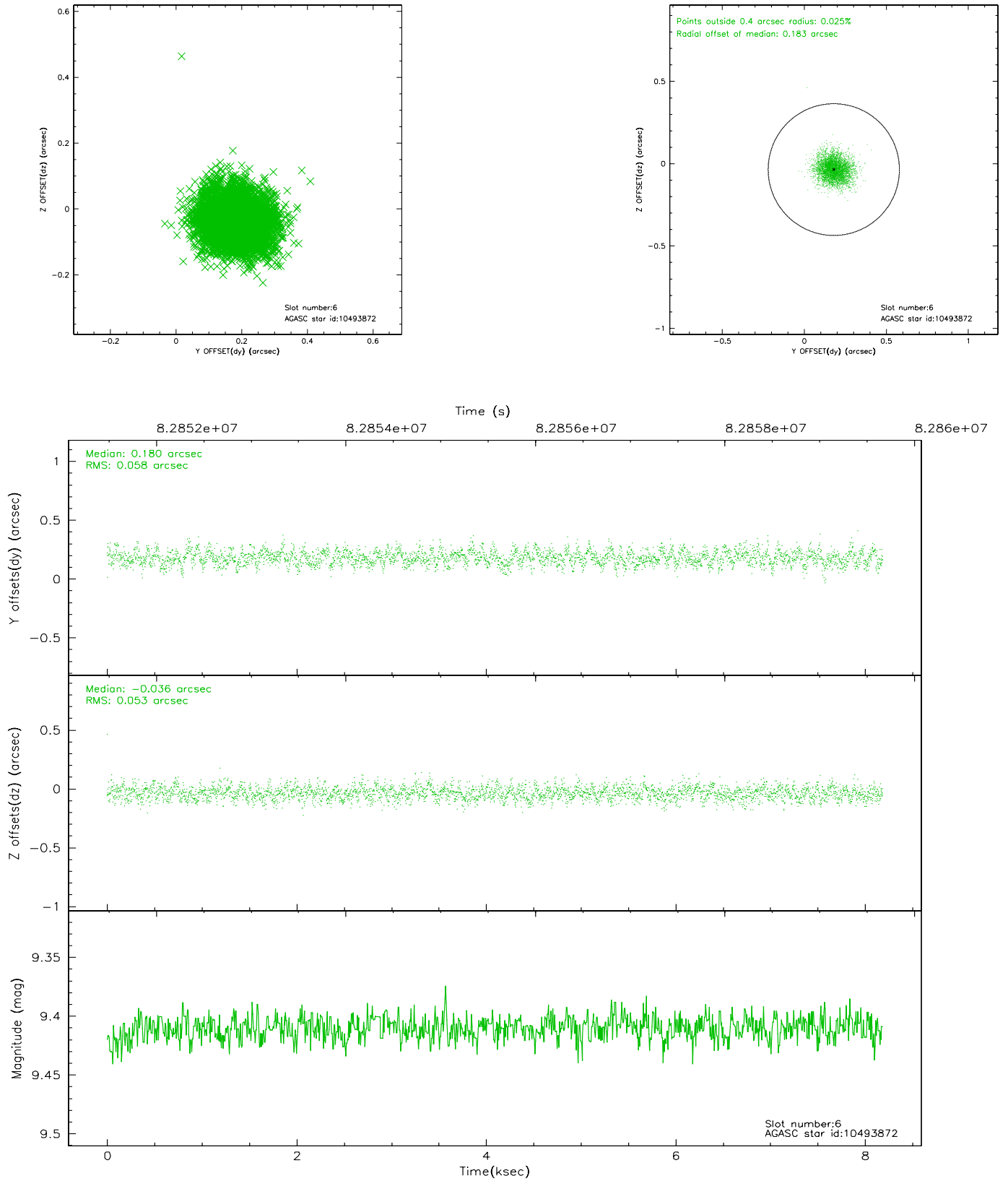
## 2.4.2 Slot 4



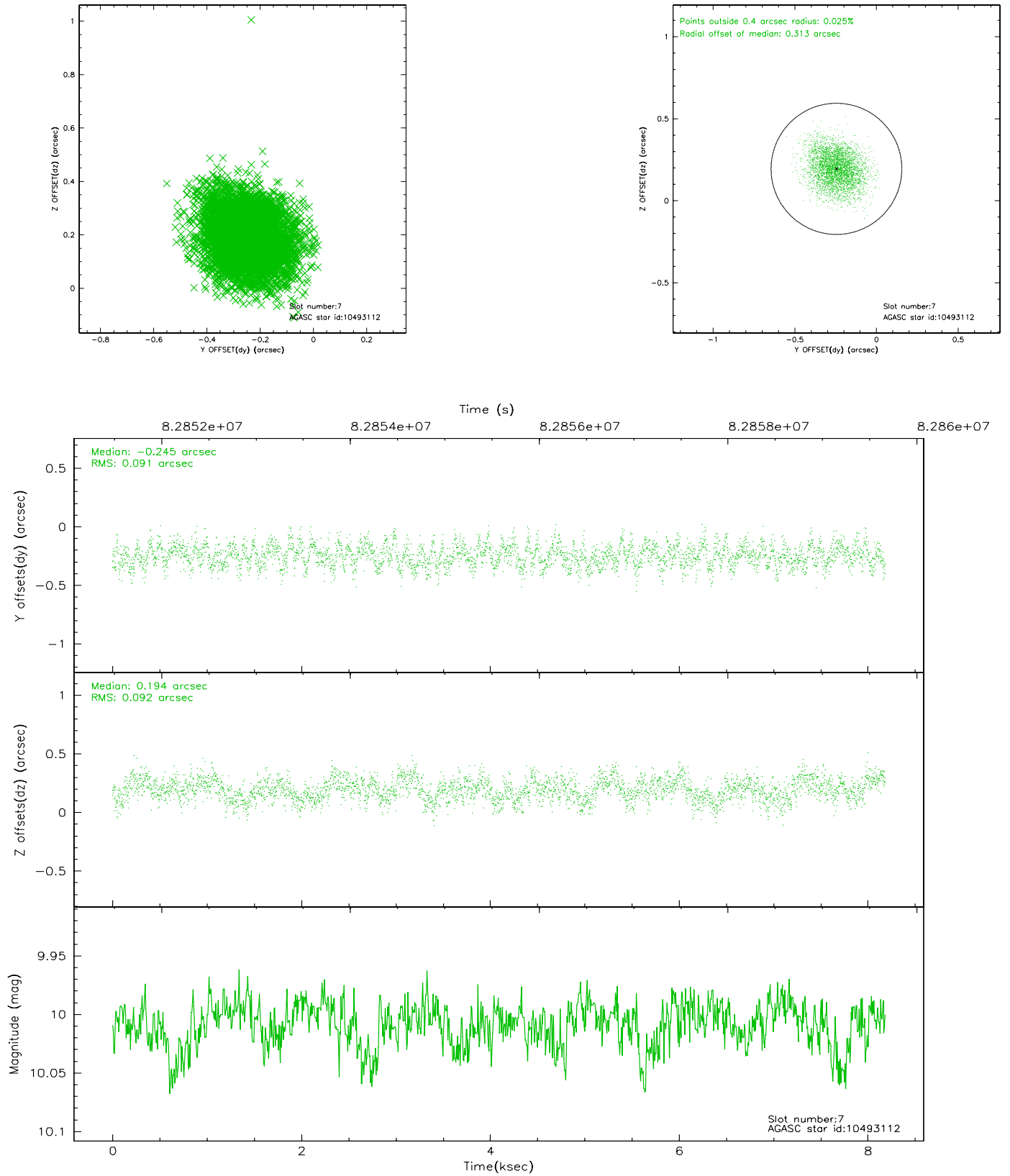
### 2.4.3 Slot 5



## 2.4.4 Slot 6

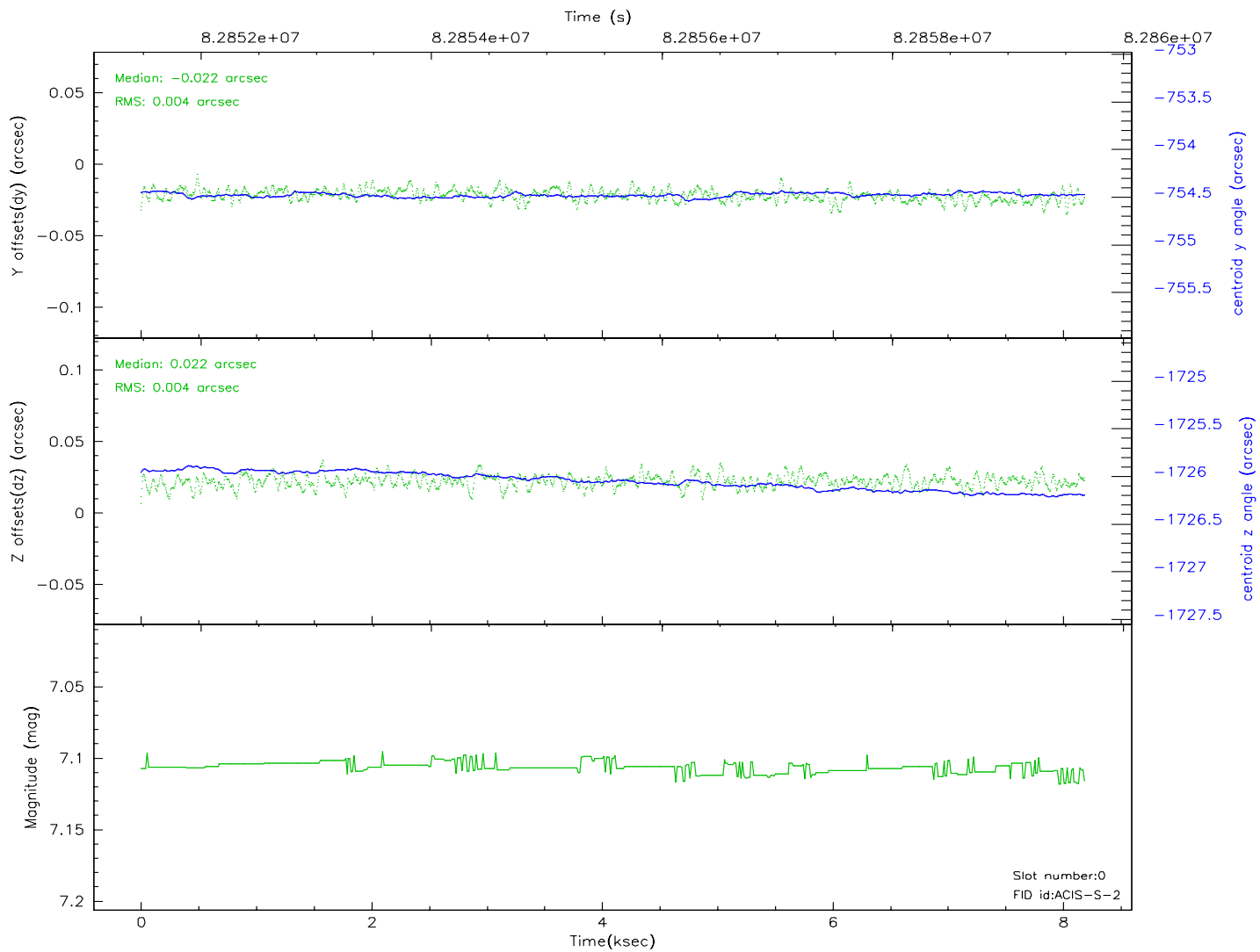
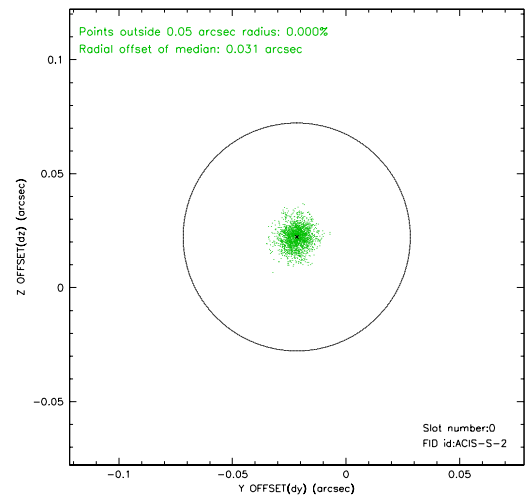
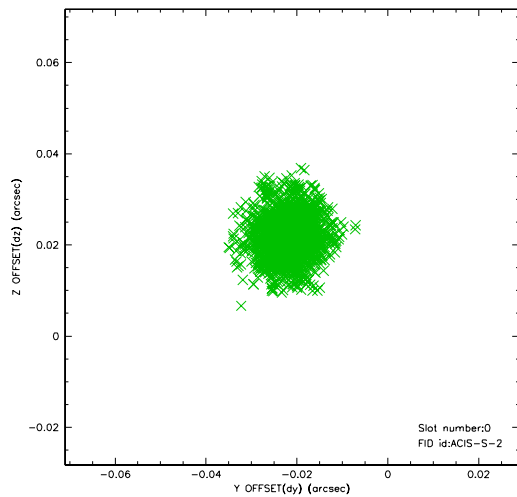


## 2.4.5 Slot 7

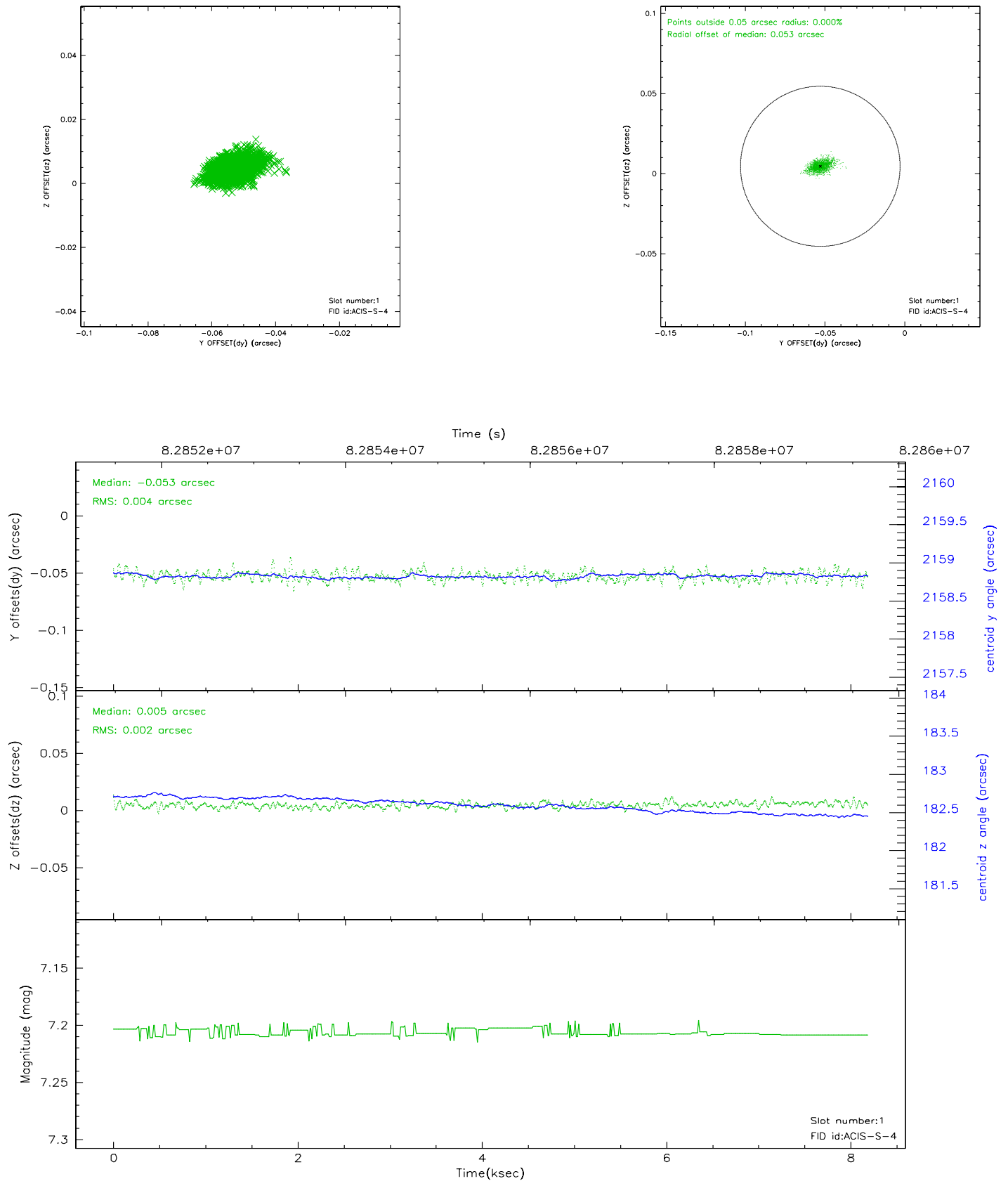


## 2.5 FID Slots

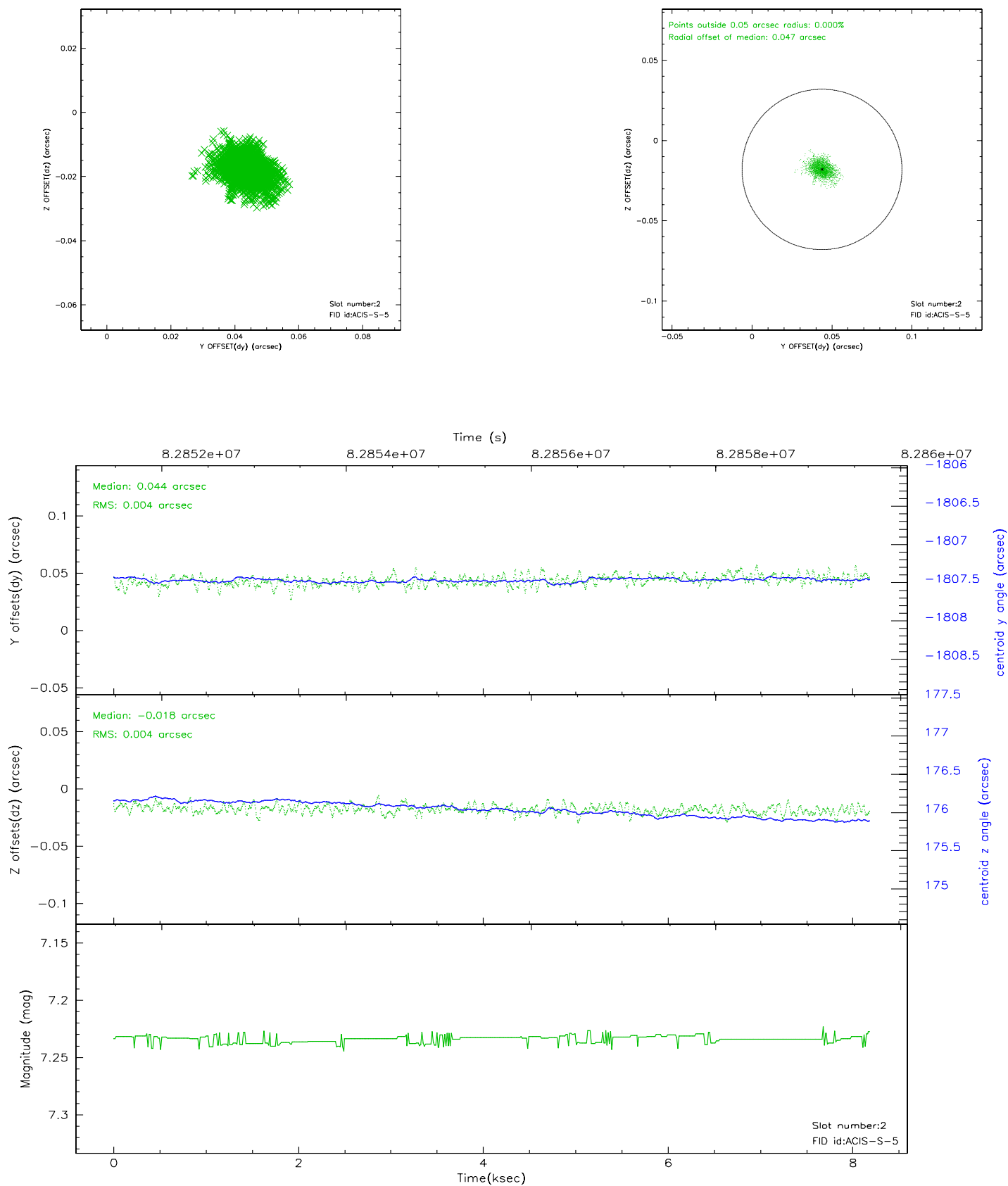
### 2.5.1 Slot 0



## 2.5.2 Slot 1

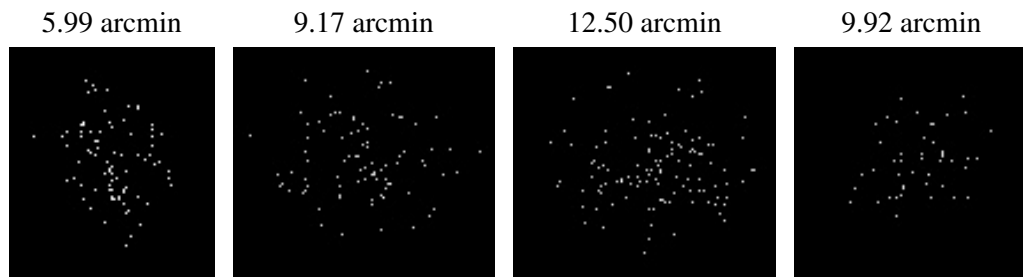


### 2.5.3 Slot 2





### 3 Point Sources



# A Summary

## A.1 Status

V&V Scientist	Jen Lauer
V&V Date (YYYY-MM-DD)	2007.06.05
V&V Edition	1
V&V Disposition and Status	OK
V&V Charge Time	7.344

## A.2 Comments

Monitor constraint not met due to solar activity: was supposed to follow obs418 by 80 - 100 days, instead follows by 136 days.