

V&V Reference Report

L2 ASCDS Version : 8.1.2

Observation 417 - L2 Version 4

Chandra X-Ray Center

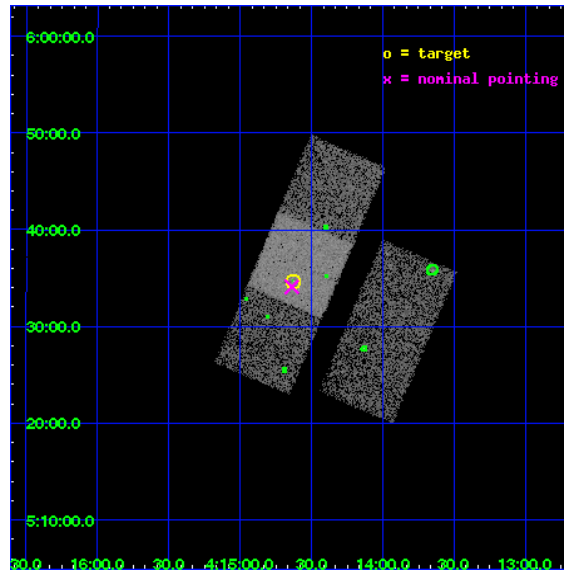
L2 Processing Date : Dec 2 2009

Contents

1	Front	2
2	OBI	3
2.1	OBI	3
2.1.1	Images	3
2.1.2	Bias	3
2.1.3	Parameters	4
2.1.4	Events	4
2.2	Compared Parameters	5
2.3	Aspect	6
2.4	Star Slots	9
2.4.1	Slot 3	9
2.4.2	Slot 4	10
2.4.3	Slot 5	11
2.4.4	Slot 6	12
2.5	FID Slots	13
2.5.1	Slot 0	13
2.5.2	Slot 1	14
2.5.3	Slot 2	15
3	Point Sources	16
A	Summary	17
A.1	Status	17
A.2	Comments	17

1 Front

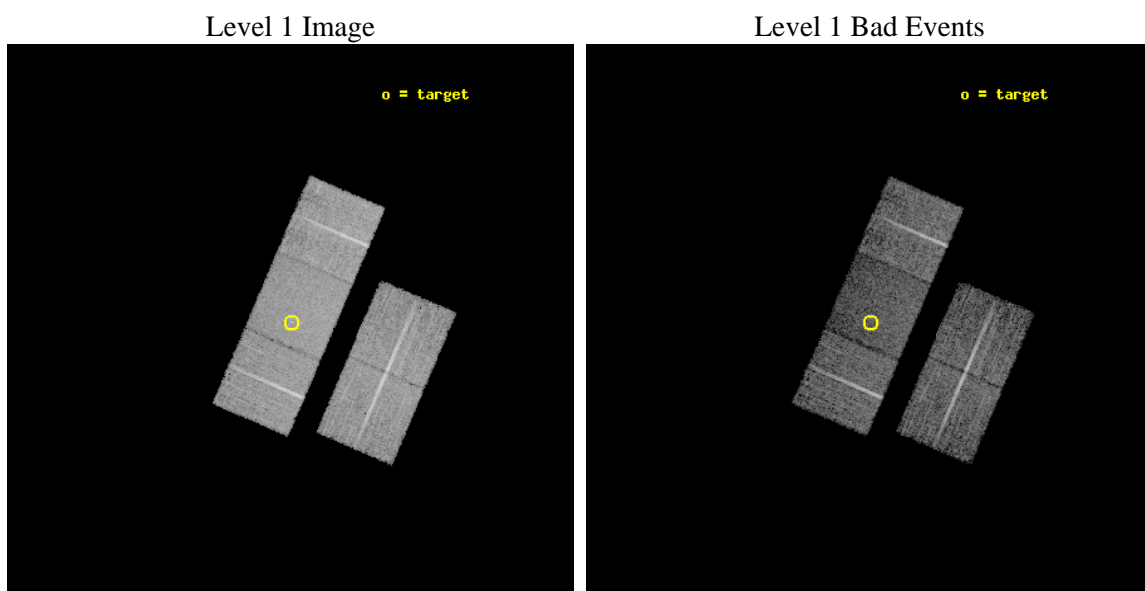
seq_num	700089	Sequence number
obs_id	417	Observation id
title	A SURVEY OF GRAVITATIONALLY LENSED QUASARS	Proposal title
observer	Prof Gordon Garmire	Principal investigator
object	MITG J0414+0534	Source name
dtcycle	0	
cycle	P	events from which exps? Prim/Second/Both
ra_targ	63.657083	Observer's specified target RA
dec_targ	5.578333	Observer's specified target Dec
ra_nom	63.659282782611	Nominal RA
dec_nom	5.5684097333915	Nominal Dec
roll_nom	293.24821373426	Nominal Roll
revision	4	Processing version of data
ontime	6661.7953502983	Sum of GTIs [s]
livetime	6577.4396863212	Livetime [s]
ontime2	6661.754310295	Sum of GTIs [s]
ontime3	6661.6722302958	Sum of GTIs [s]
ontime6	6661.7132702991	Sum of GTIs [s]
ontime7	6661.7953502983	Sum of GTIs [s]
ontime8	6661.6311903	Sum of GTIs [s]
l2events	43398	Number of level 2 events



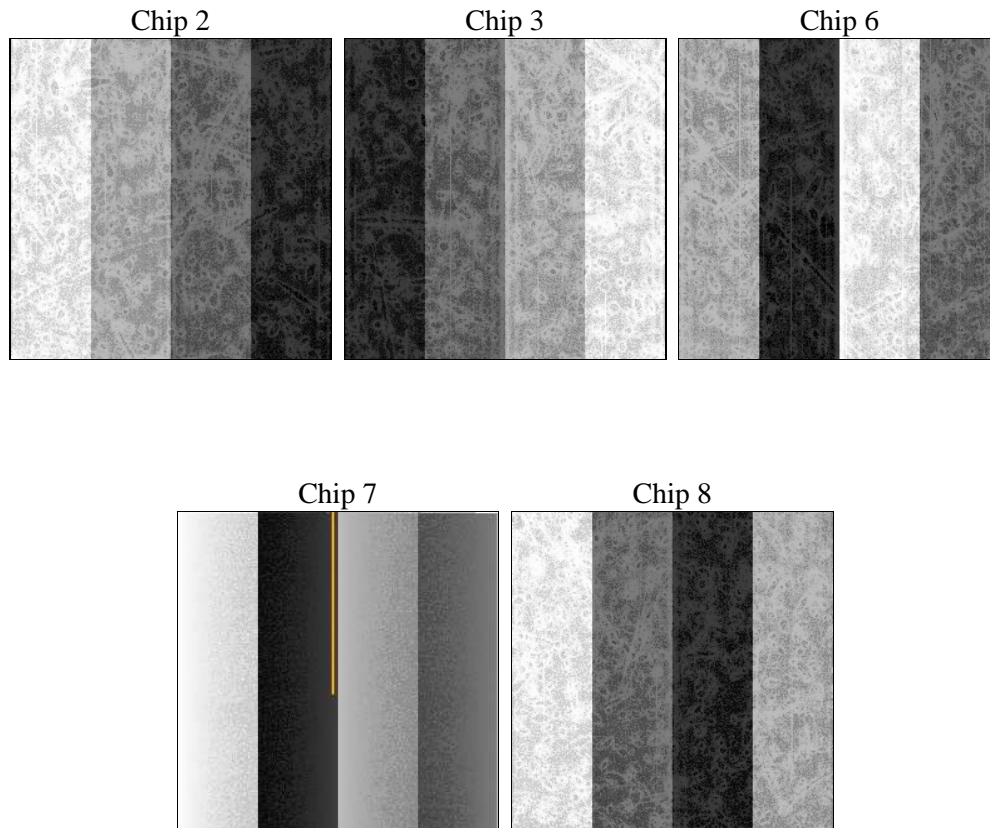
2 OBI

2.1 OBI

2.1.1 Images



2.1.2 Bias



2.1.3 Parameters

obi_num	0	Obi number	sched_exp_time	7498.144000	Scheduled observation exposure time
ascdsver	8.1.2	ASCDS version number	ontime	6661.7953502983	Sum of GTIs [s]
caldsver	4.1.4	 	ontime2	6661.754310295	Sum of GTIs [s]
date	2009-12-02T12:28:23	Date and time of file creation	ontime3	6661.6722302958	Sum of GTIs [s]
revision	3	Processing version of data	ontime6	6661.7132702991	Sum of GTIs [s]
			ontime7	6661.7953502983	Sum of GTIs [s]
			ontime8	6661.6311903	Sum of GTIs [s]
			l1events	300849	Number of level 1 events

2.1.4 Events

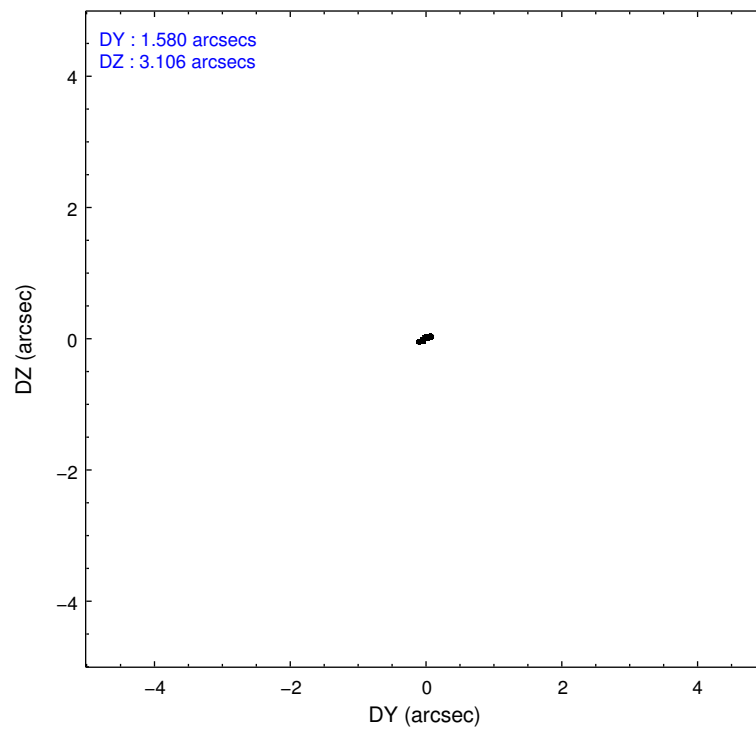
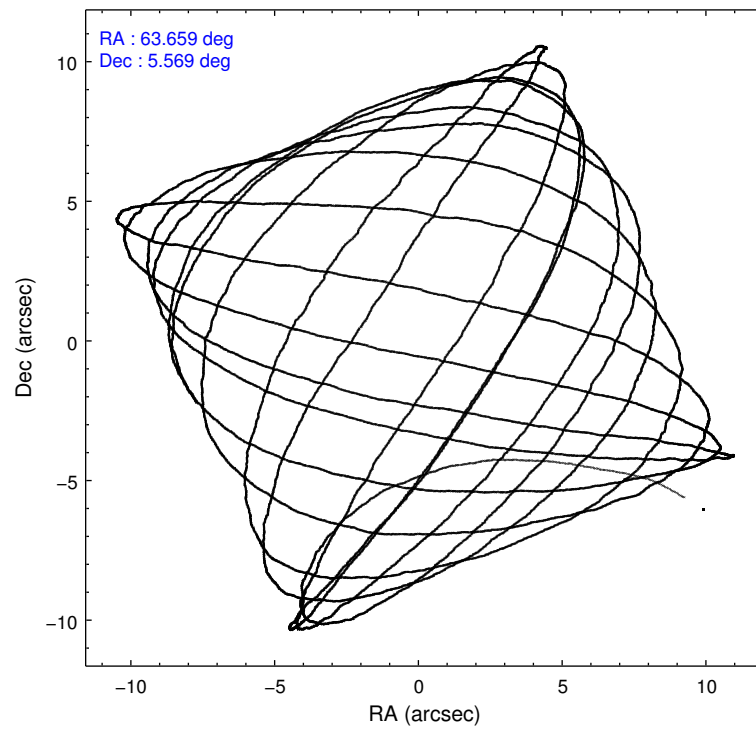
	ccd 2	ccd 3	ccd 6	ccd 7	ccd 8
level 1 events	56160	54873	59599	60727	69490
rejected events	51189	49481	54147	37494	57879
rejected %	91%	90%	90%	61%	83%

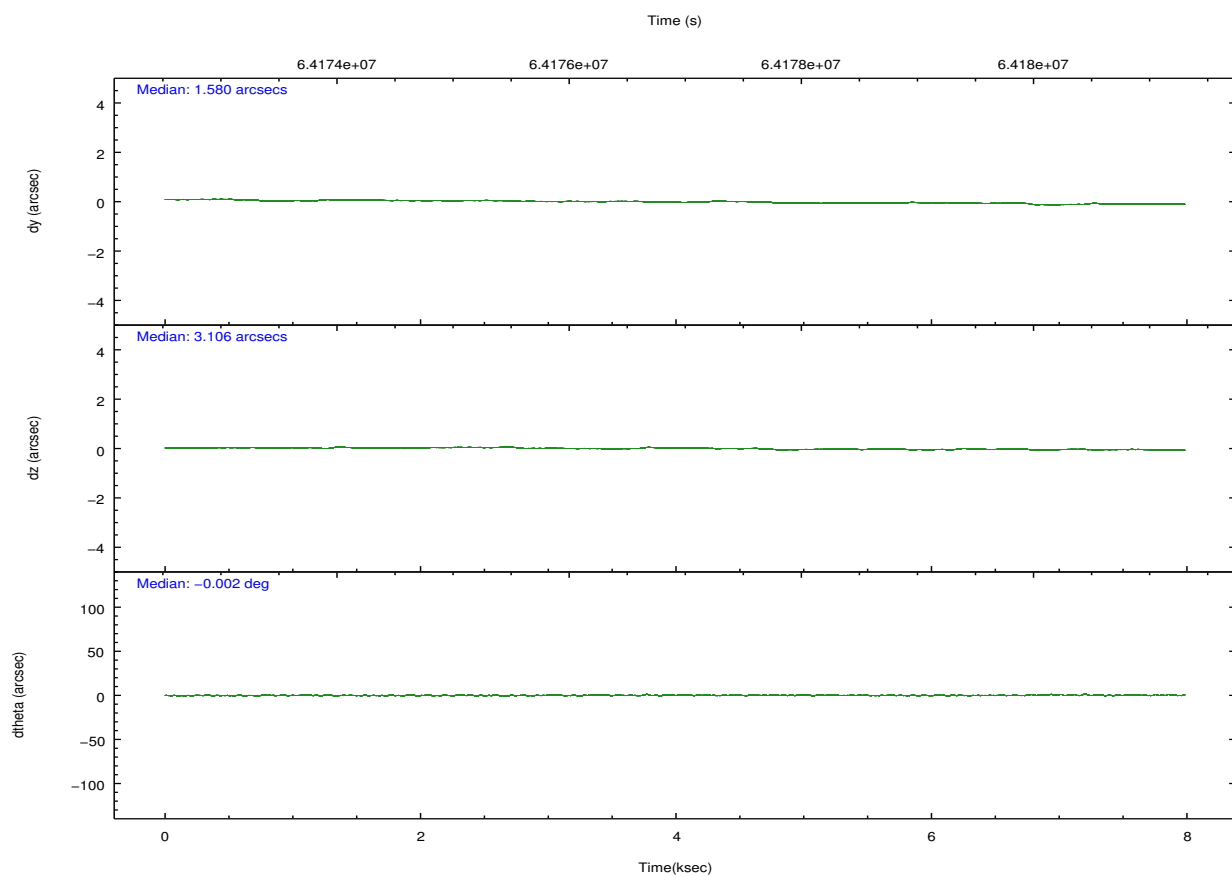
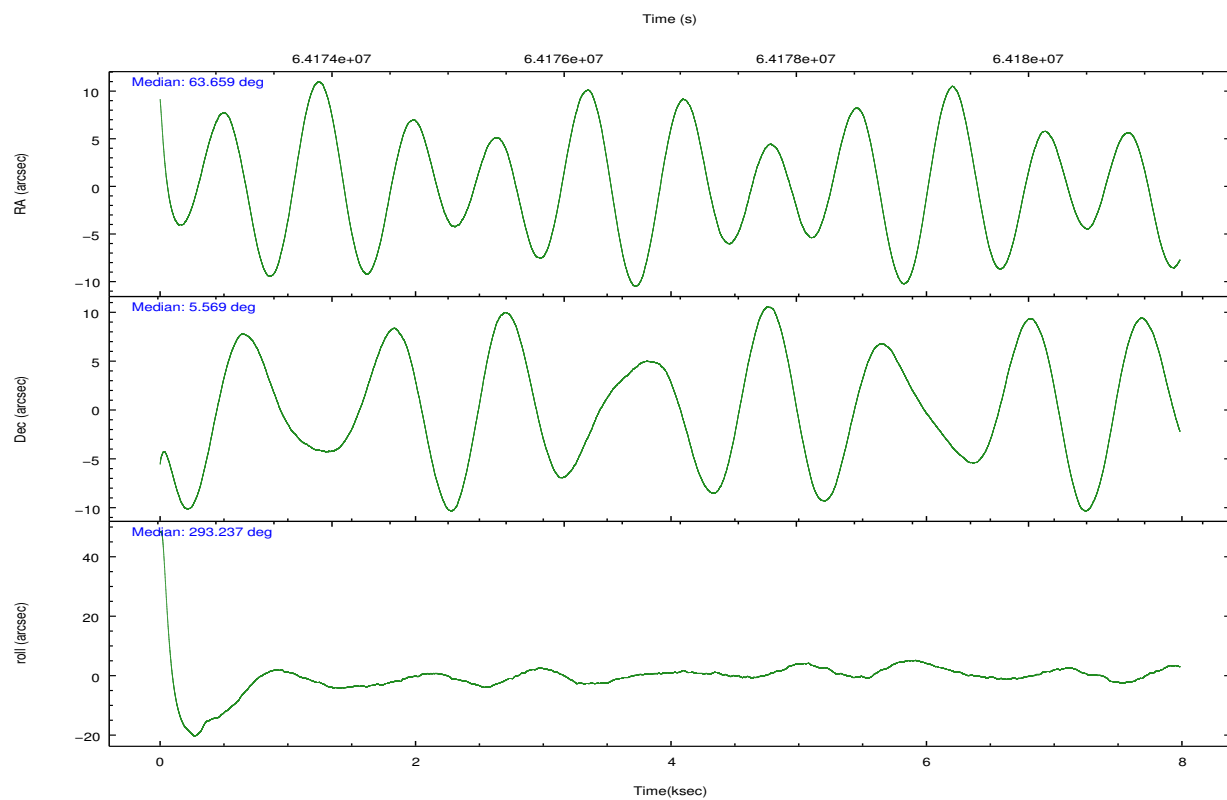
	ccd 2	ccd 3	ccd 6	ccd 7	ccd 8
grade 0 events	1062	1208	1146	1419	2571
	1%	2%	1%	2%	3%
grade 1 events	15	9	12	24	21
	0%	0%	0%	0%	0%
grade 2 events	2037	2186	2038	5007	3724
	3%	3%	3%	8%	5%
grade 3 events	338	341	346	1358	993
	0%	0%	0%	2%	1%
grade 4 events	312	349	332	1218	859
	0%	0%	0%	2%	1%
grade 5 events	948	1051	1110	3560	1689
	1%	1%	1%	5%	2%
grade 6 events	1225	1315	1592	14246	3470
	2%	2%	2%	23%	4%
grade 7 events	50223	48414	53023	33895	56163
	89%	88%	88%	55%	80%

2.2 Compared Parameters

Parameter	Planned	Actual	Parameter	Planned	Actual
Instrument	ACIS	ACIS	Obspar format version number	6	6
Detector	ACIS-23678	ACIS-23678	Obspar file type	PREDICTED	ACTUAL
Grating	NONE	NONE	Obspar update status	NONE	UPDATED
Data mode	FAINT	FAINT	Number of optional ACIS chips dropped	0	0
Observation mode	POINTING	POINTING	On-chip summing requested	N	N
Pointing RA	63.637152	63.6592827826106	Subarray requested	NONE	NONE
Pointing Dec	5.584908	5.568409733391475	Alternating exposures requested	N	N
Pointing Roll	293.093628	293.2482137342551	Primary exposure time	0.000000	3.2
SIM focus pos (mm)	-0.684267	-0.6828225247311905			
SIM defocus (mm)	0	0.001444936568705701			
SIM translation stage pos (mm)	-190.132523	-190.1400660498719			
SIM translation stage offset (mm)	0	0.00754346686406393			
Observation start time	64173406.184000	64172377.987818			
Observation start date	2000-01-13T17:55:42	2000-01-13T17:39:37			
Observation end time	64180905.184000	64181038.725633			
Observation end date	2000-01-13T20:00:41	2000-01-13T20:03:58			
Read mode	TIMED	TIMED			

2.3 Aspect



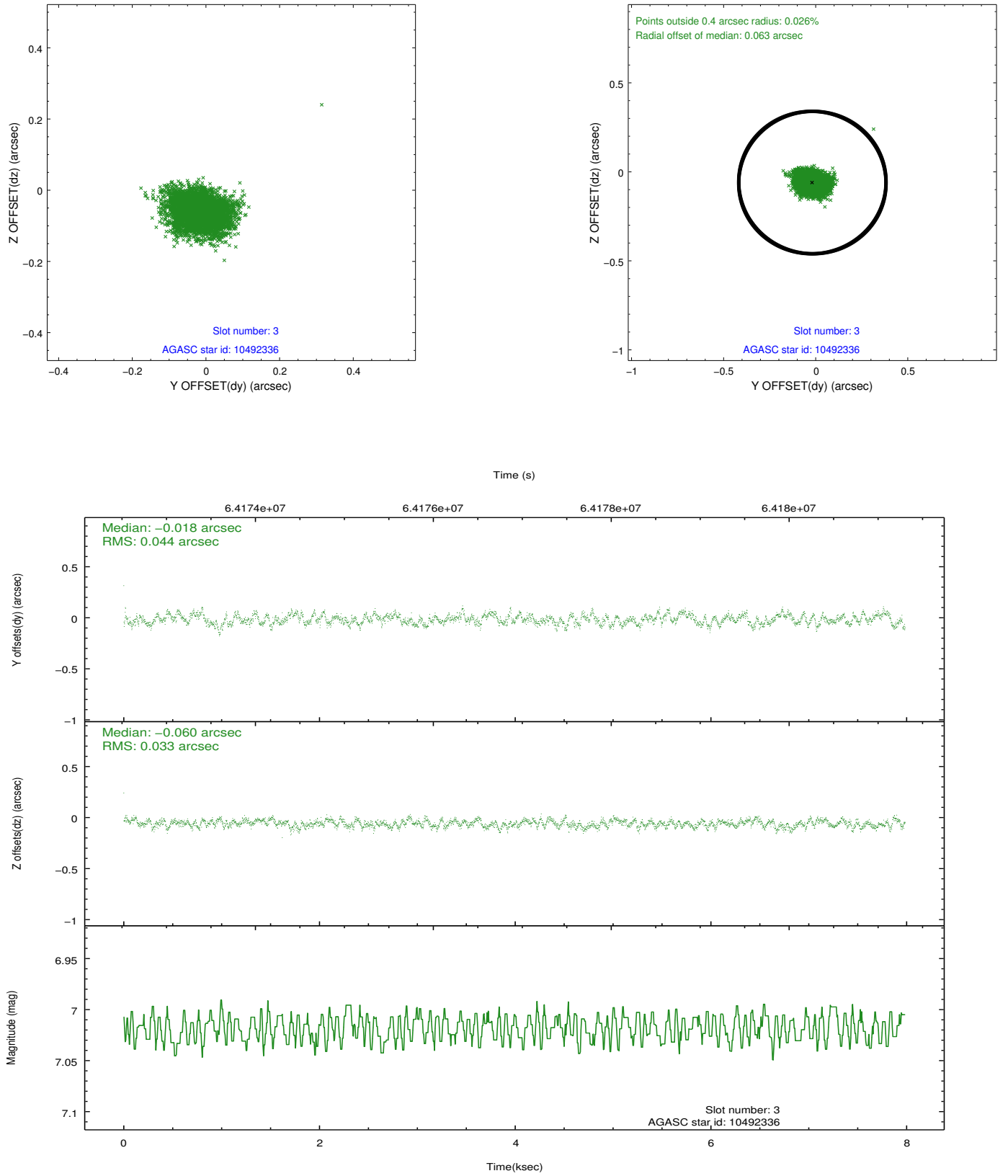


Slot Statistics

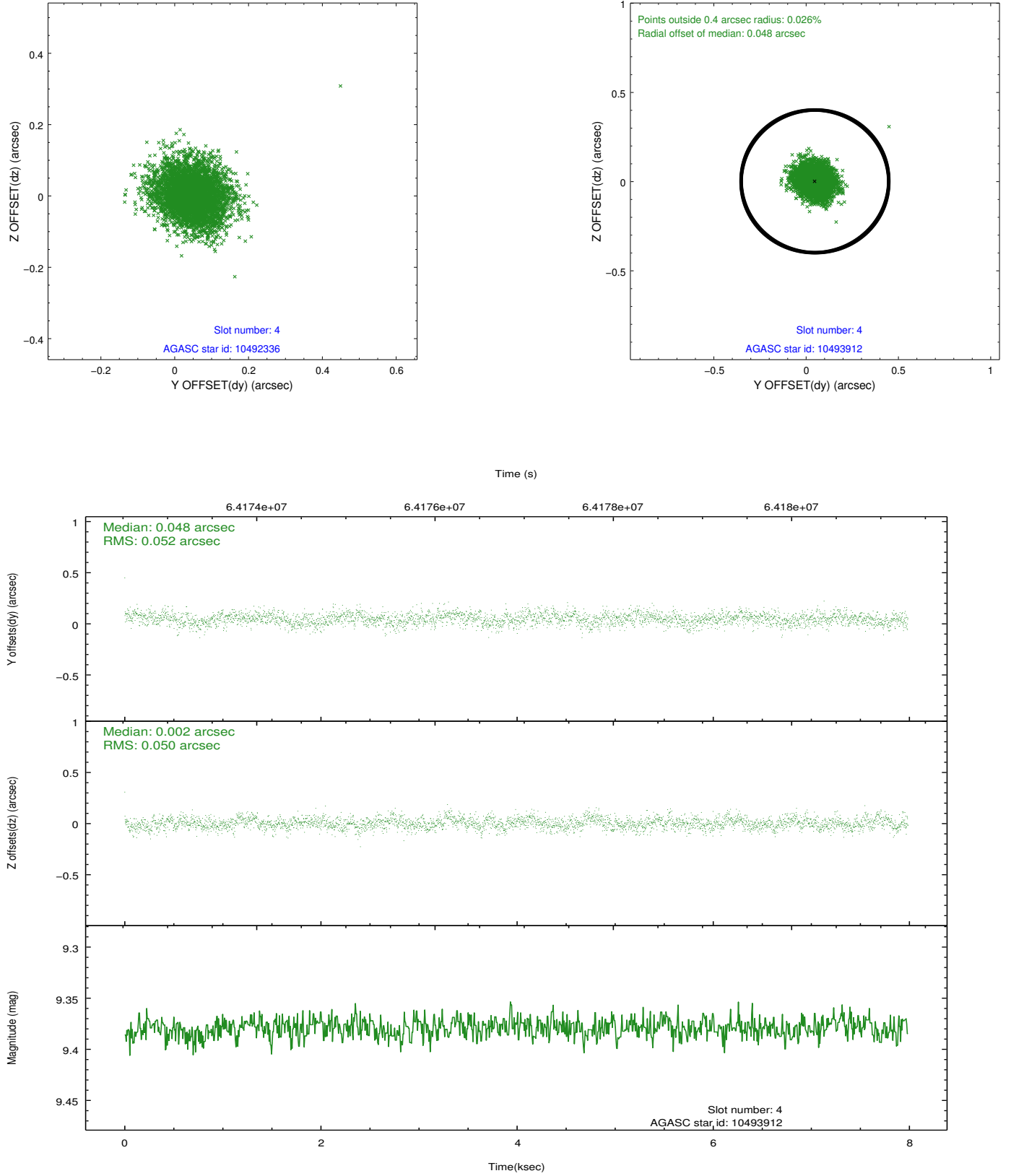
slot	status	id	mag	n_pts	med_dy	med_dz	dr1	dr2	ra	dec	mean_y	mean_z
0	FID	ACIS-S-2	7.12	1948	0.002	-0.014	0.007	0.011	0.000000	0.000000	-754.23	-1724.15
1	FID	ACIS-S-4	7.21	1946	-0.003	0.003	0.005	0.010	0.000000	0.000000	2158.79	183.53
2	FID	ACIS-S-5	7.24	1946	-0.030	0.020	0.006	0.010	0.000000	0.000000	-1806.13	178.15
3	GUIDE	10492336	7.02	3894	-0.018	-0.060	0.058	0.094	63.181049	5.030869	1194.12	-2286.26
4	GUIDE	10493912	9.38	3896	0.048	0.002	0.076	0.123	63.610162	5.180568	1302.56	-660.02
5	GUIDE	10493872	9.39	3894	-0.071	0.018	0.083	0.134	63.703184	5.387990	746.24	-60.09
6	GUIDE	10495504	9.63	3891	0.042	0.043	0.086	0.144	63.747259	5.177624	1504.86	-211.36
7	UNUSED		0.00	0	0.000	0.000	0.000	0.000	0.000000	0.000000	0.00	0.00

2.4 Star Slots

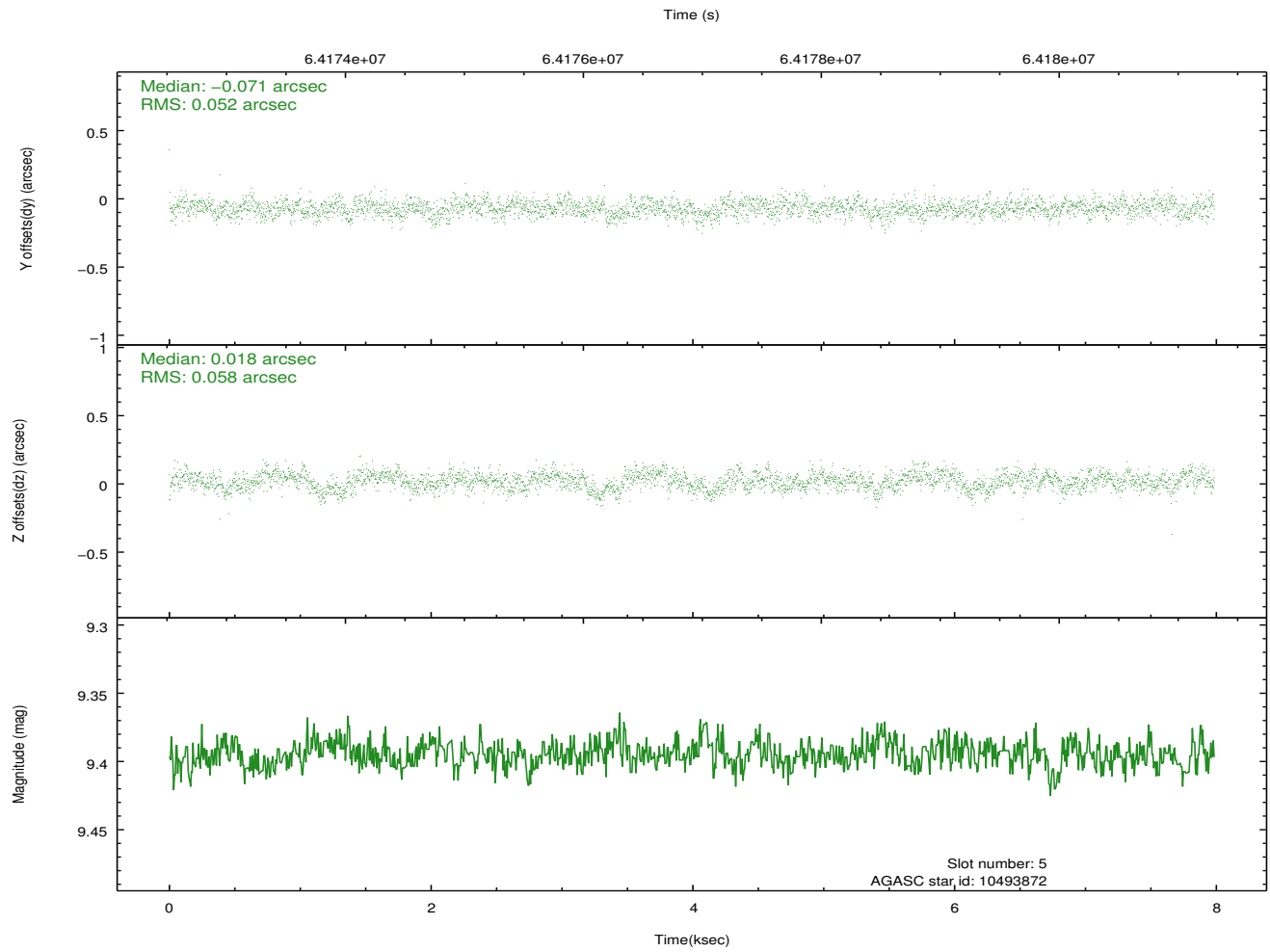
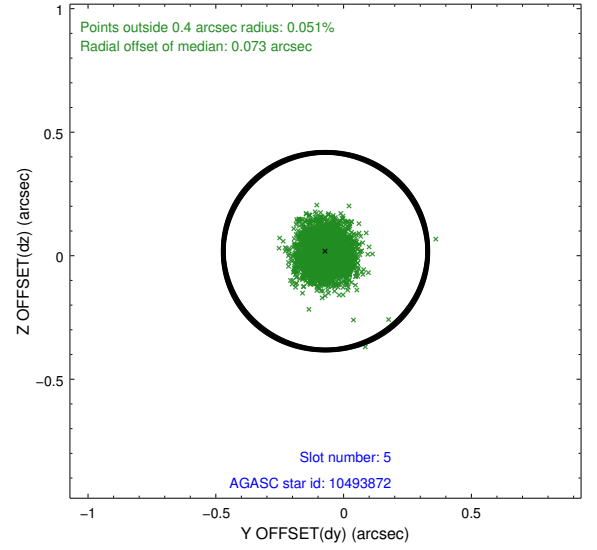
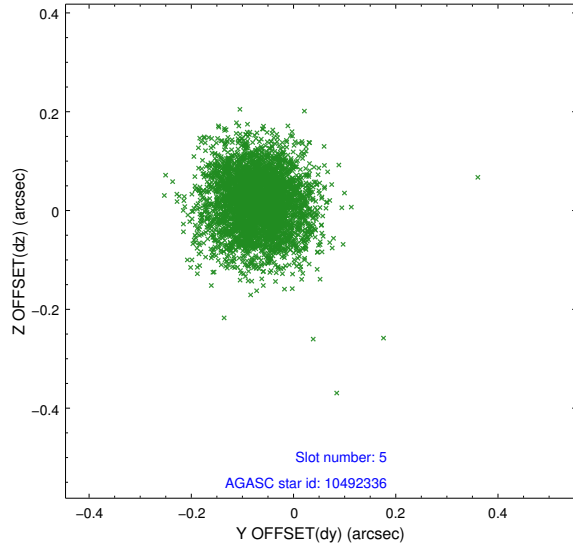
2.4.1 Slot 3



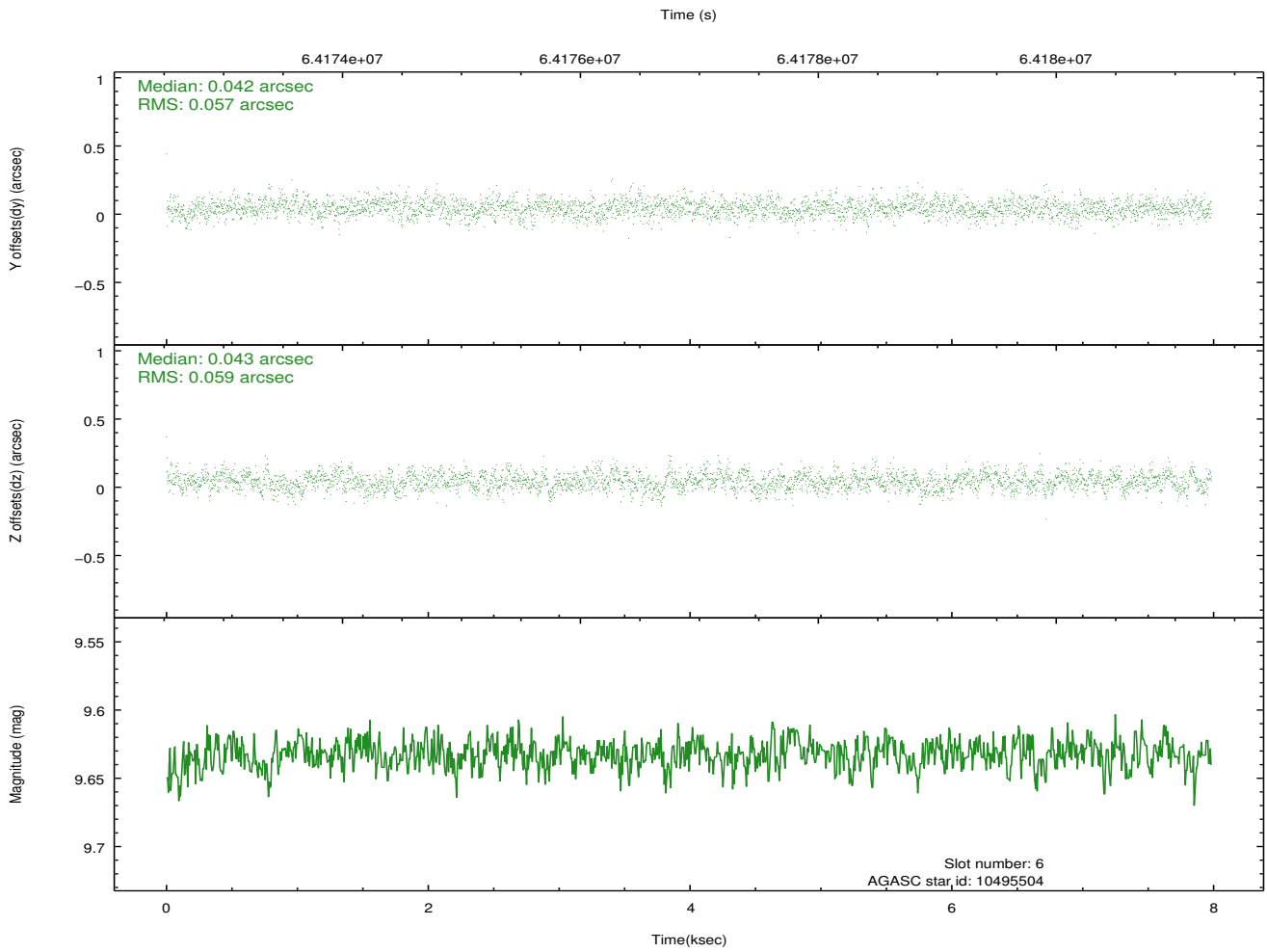
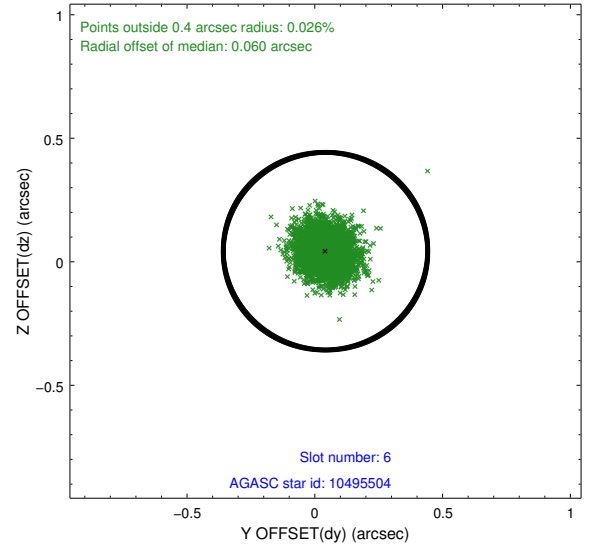
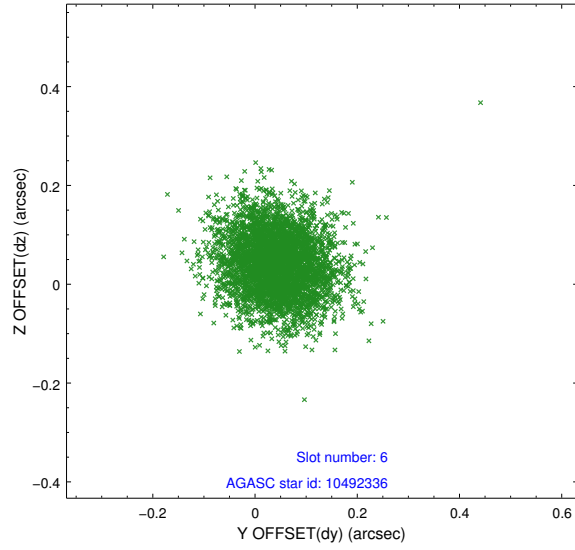
2.4.2 Slot 4



2.4.3 Slot 5

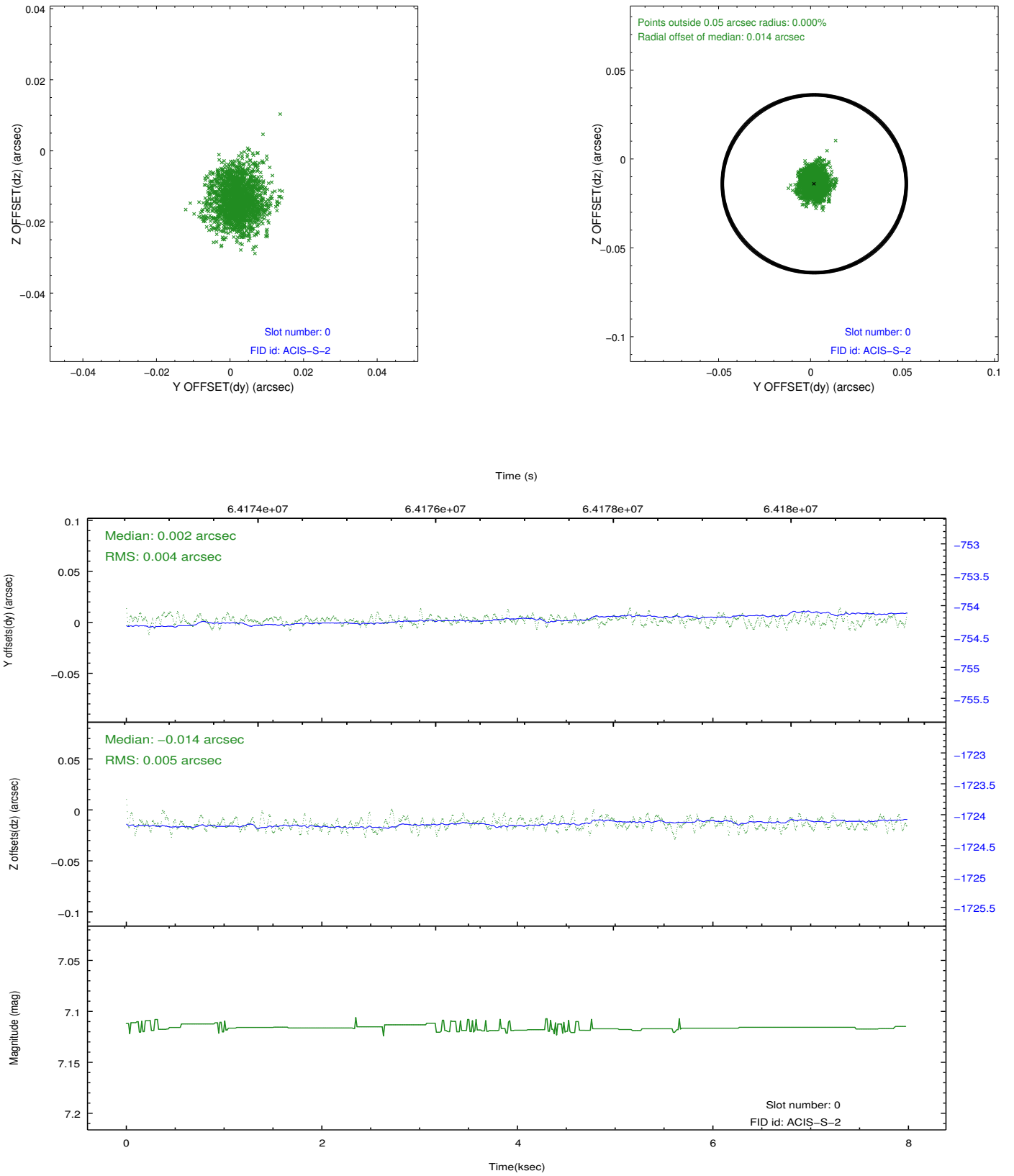


2.4.4 Slot 6

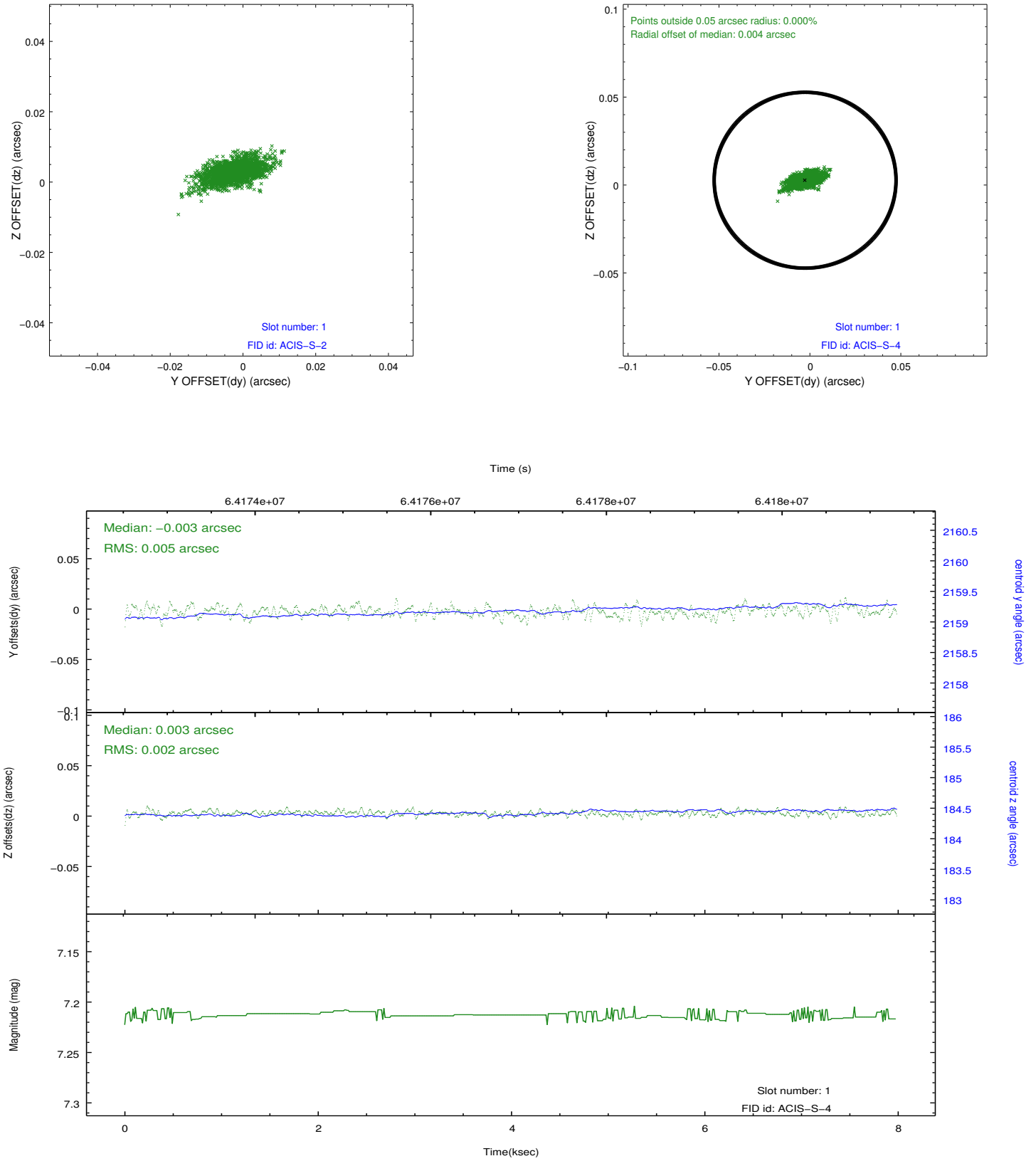


2.5 FID Slots

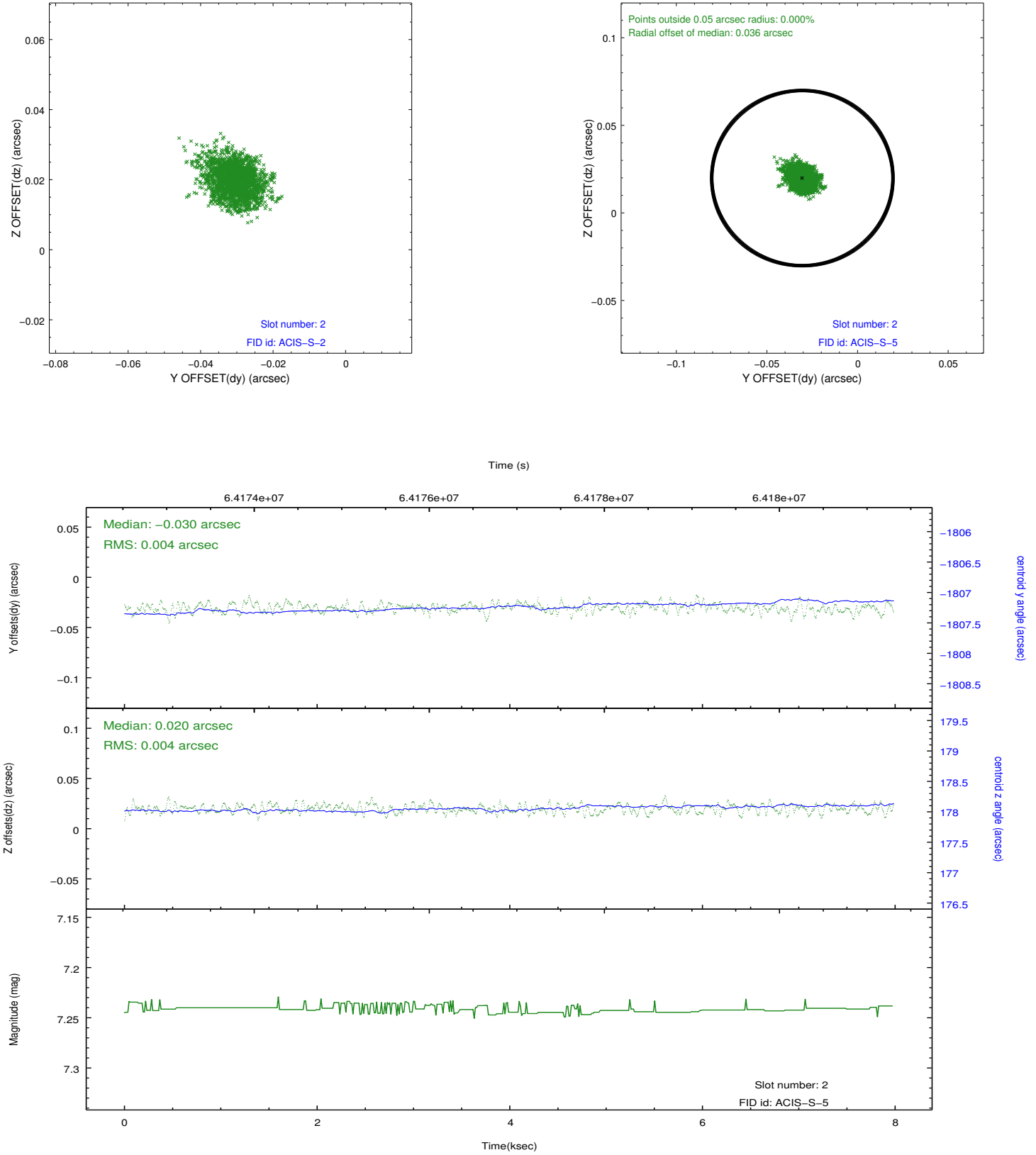
2.5.1 Slot 0



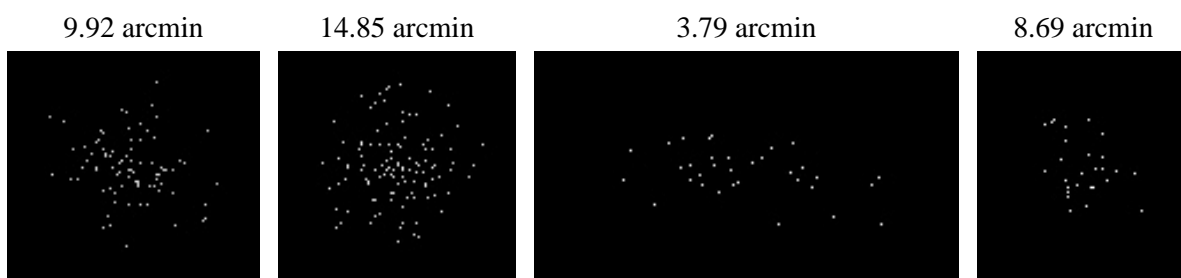
2.5.2 Slot 1



2.5.3 Slot 2



3 Point Sources



A Summary

A.1 Status

V&V Scientist	Beth Sundheim
V&V Date (YYYY-MM-DD)	2009.12.09
V&V Edition	1
V&V Disposition and Status	OK
V&V Charge Time	6.662

A.2 Comments

Focal plane temperature is warmer than -118.7 C degrees during the entire observation. This temperature is the upper limit of the verified ACIS calibration for the front-illuminated chips. The focal plane temperature is also warmer than -116.7 degrees C for the entire observation. This temperature is the upper limit of the verified ACIS calibration for the back-illuminated chips. The ACIS spectral response calibration is less accurate at these warmer temperatures than it is at -119.7 C. Users whose science objectives depend on the most accurate spectral response (ie: fitting line-rich spectra) may notice an effect. Users whose science objectives do not depend on the most accurate spectral response should not notice an effect.

==

Slot 7 was not utilized in this observation.