

V&V Reference Report

L2 ASCDS Version : 7.6.10

Observation 416 - L2 Version 001
Chandra X-Ray Center

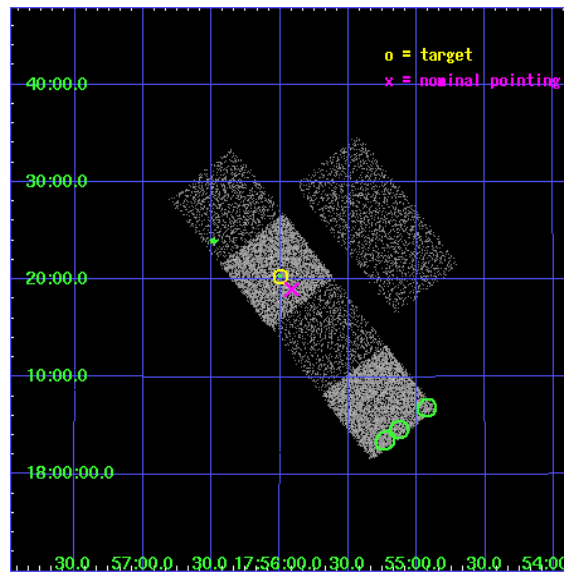
L2 Processing Date : Jun 1 2007

Contents

1	Front	2
2	OBI	3
2.1	OBI	3
2.1.1	Images	3
2.1.2	Bias	3
2.1.3	Parameters	4
2.1.4	Events	4
2.2	Compared Parameters	5
2.3	Aspect	6
2.4	Star Slots	9
2.4.1	Slot 3	9
2.4.2	Slot 4	10
2.4.3	Slot 5	11
2.4.4	Slot 6	12
2.4.5	Slot 7	13
2.5	FID Slots	14
2.5.1	Slot 0	14
2.5.2	Slot 1	15
2.5.3	Slot 2	16
3	Point Sources	17
A	Summary	18
A.1	Status	18
A.2	Comments	18

1 Front

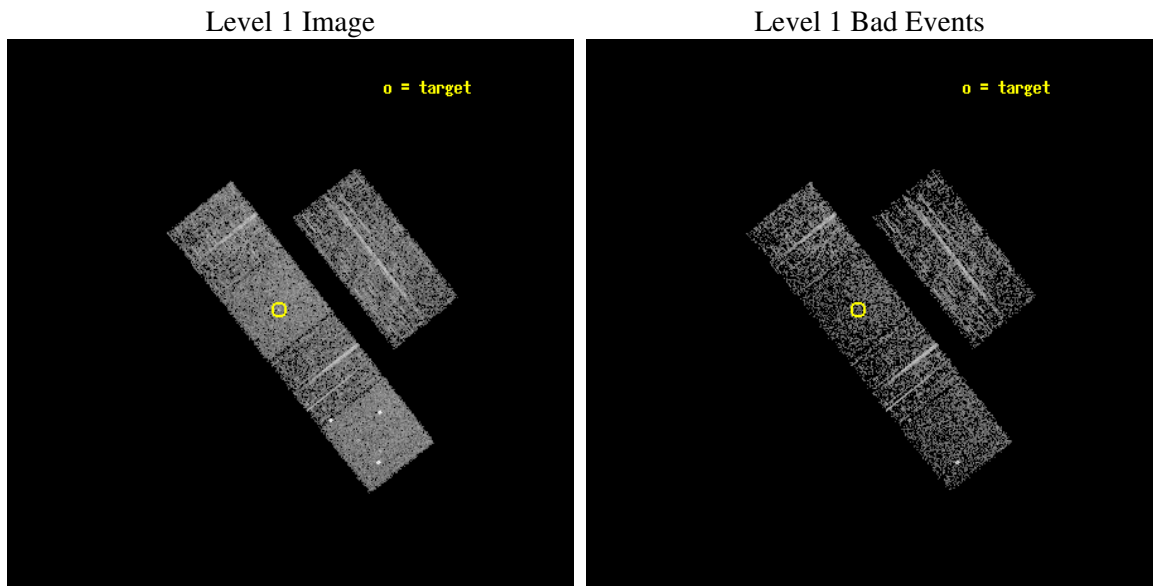
seq_num	700088
obs_id	416
title	LOW-LUMINOSITY ACTIVE GALACTIC NUCLEI IN NEARBY GALAXIES
observer	Prof. Gordon Garmire
object	NGC 6500
dtcycle	0
cycle	P
ra_targ	268.99875
dec_targ	18.338417
ra_nom	268.97822891698
dec_nom	18.316575297367
roll_nom	231.74356679608
revision	3
ontime	2131.2000019848
livetime	2104.2134643051
ontime2	2131.2000019848
ontime3	2131.2000019848
ontime5	2131.2000019848
ontime6	2131.2000019848
ontime7	2131.2000019848
ontime8	2131.2000019848
l2events	19027



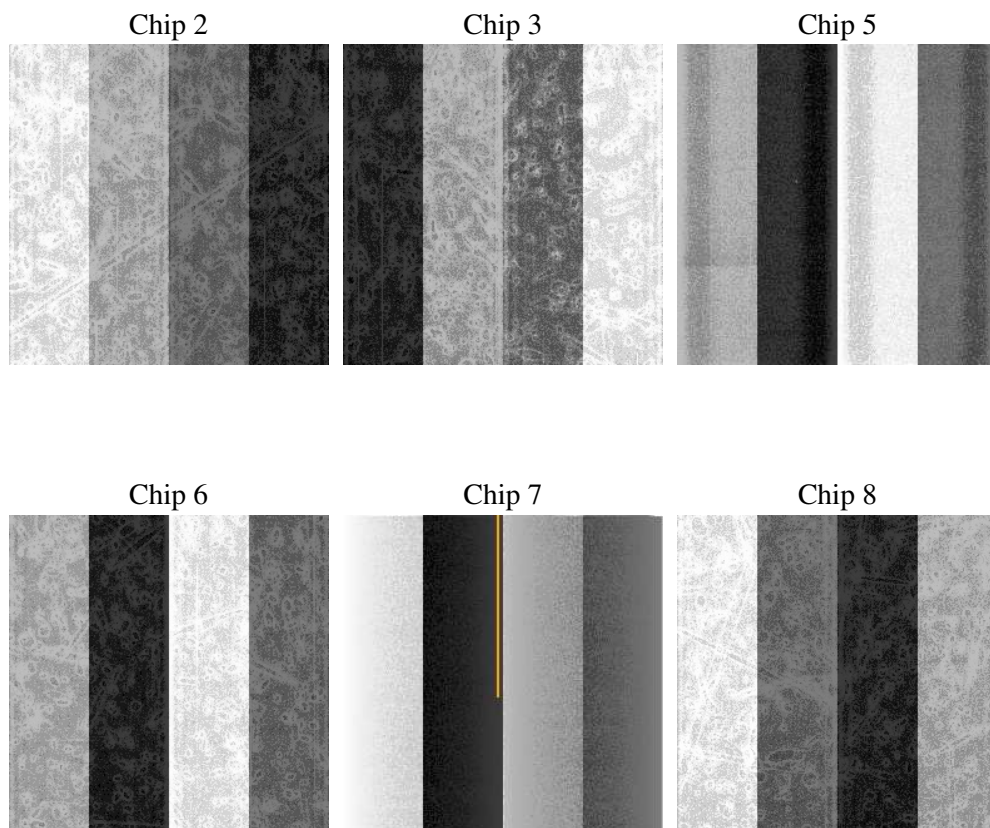
2 OBI

2.1 OBI

2.1.1 Images



2.1.2 Bias



2.1.3 Parameters

obi_num	0
ascdsver	7.6.10
caldsver	3.4.0
date	2007-06-01T03:05:18
revision	3

sched_exp_time	2000.000000
ontime	2131.2000019848
ontime2	2131.2000019848
ontime3	2131.2000019848
ontime5	2131.2000019848
ontime6	2131.2000019848
ontime7	2131.2000019848
ontime8	2131.2000019848
l1events	96168

2.1.4 Events

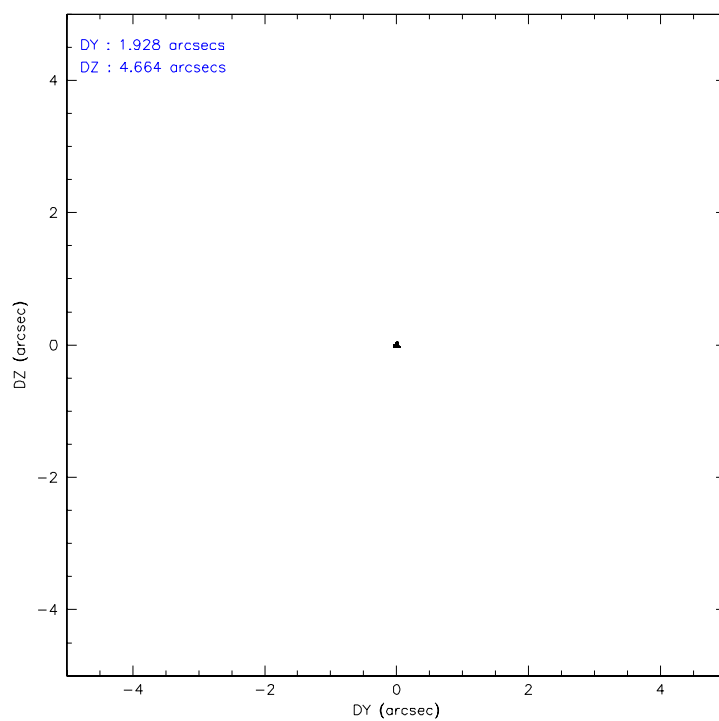
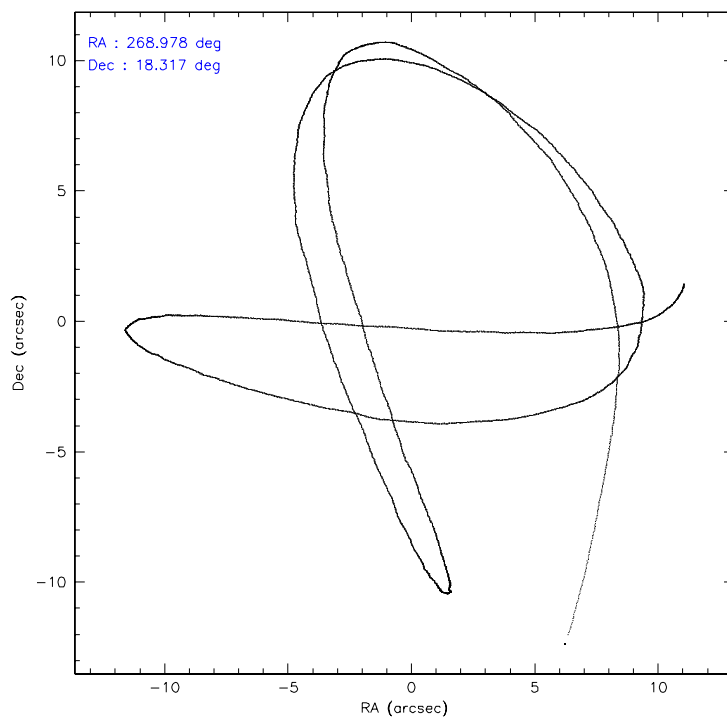
	ccd 2	ccd 3	ccd 5	ccd 6	ccd 7	ccd 8
level 1 events	14223	14002	19314	14250	17056	17323
rejected events	12756	12630	10674	12773	10250	14020
rejected %	89%	90%	55%	89%	60%	80%

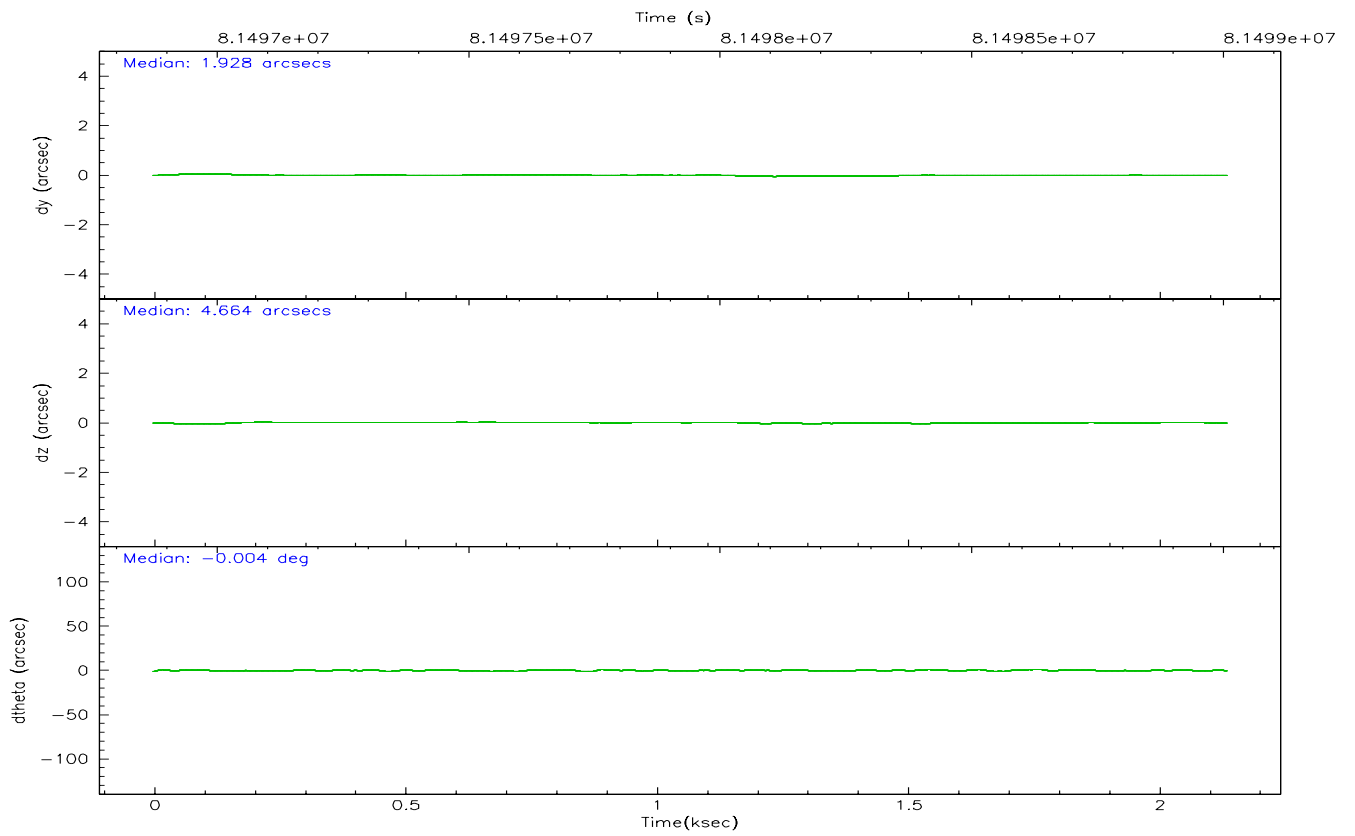
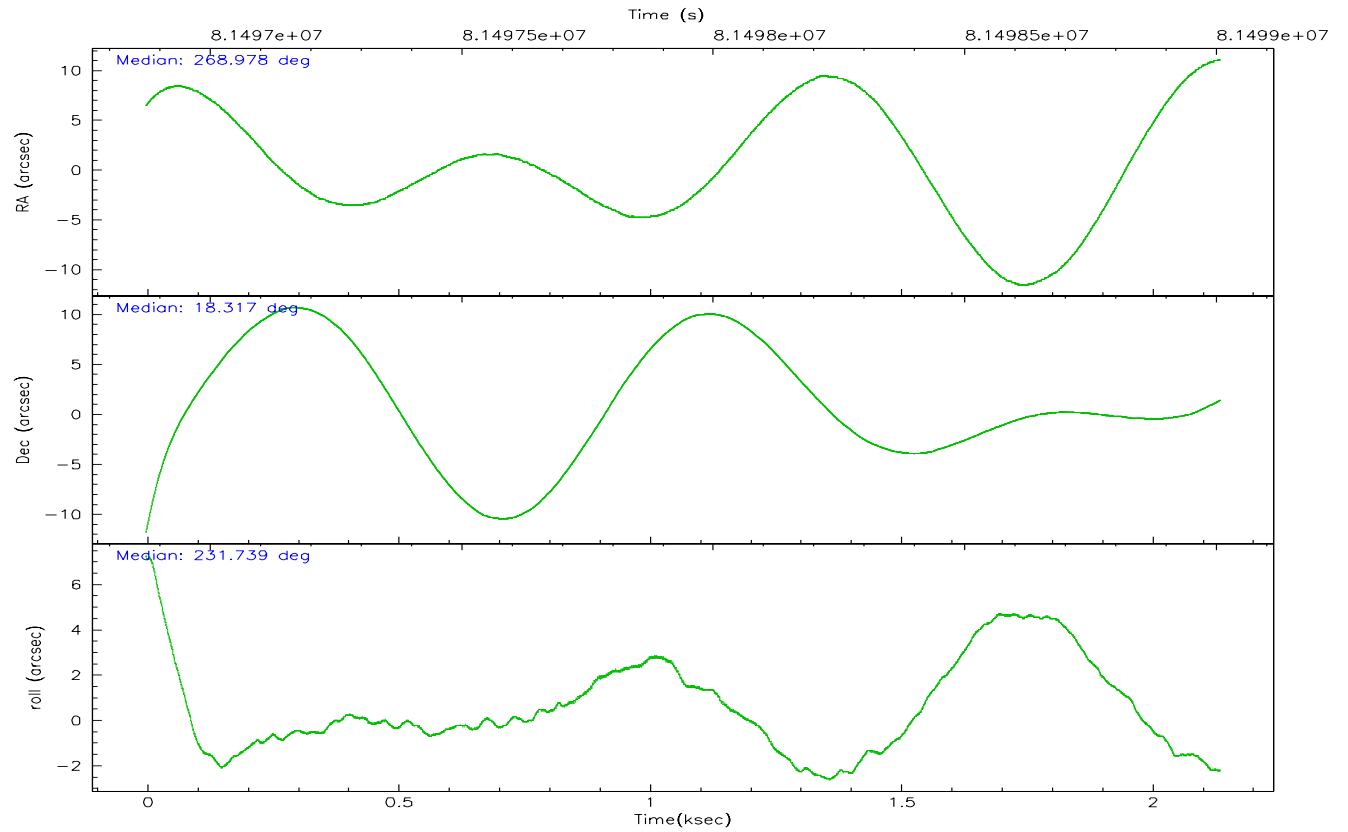
	ccd 2	ccd 3	ccd 5	ccd 6	ccd 7	ccd 8
grade 0 events	742	698	1553	685	793	1144
	5%	4%	8%	4%	4%	6%
grade 1 events	2	1	67	3	18	8
	0%	0%	0%	0%	0%	0%
grade 2 events	320	252	2646	298	1465	749
	2%	1%	13%	2%	8%	4%
grade 3 events	150	140	385	167	665	381
	1%	0%	1%	1%	3%	2%
grade 4 events	130	155	435	170	651	356
	0%	1%	2%	1%	3%	2%
grade 5 events	417	463	1468	518	1649	671
	2%	3%	7%	3%	9%	3%
grade 6 events	241	261	4266	274	3768	883
	1%	1%	22%	1%	22%	5%
grade 7 events	12221	12032	8494	12135	8047	13131
	85%	85%	43%	85%	47%	75%

2.2 Compared Parameters

Parameter	Planned	Actual	Parameter	Planned	Actual
Instrument	ACIS	ACIS	Obspar format version number	6	6
Detector	ACIS-235678	ACIS-235678	Obspar file type	PREDICTED	ACTUAL
Grating	NONE	NONE	Obspar update status	NONE	UPDATED
Data mode	FAINT	FAINT	Number of optional ACIS chips dropped	0	0
Observation mode	POINTING	POINTING	On-chip summing requested	N	N
Pointing RA	268.982102	268.9782289169833	Subarray requested	NONE	NONE
Pointing Dec	18.343715	18.31657529736714	Alternating exposures requested	N	N
Pointing Roll	231.585670	231.7435667960799	Primary exposure time	3.200000	3.2
SIM focus pos (mm)	-0.684267	-0.6828225247311905			
SIM defocus (mm)	0	0.001444936568705701			
SIM translation stage pos (mm)	-190.132523	-190.1425803651734			
SIM translation stage offset (mm)	0	0.01005778216563158			
Observation start time	81497006.184000	81495785.802173			
Observation start date	2000-08-01T06:02:22	2000-08-01T05:43:05			
Observation end time	81499006.184000	81499871.452325			
Observation end date	2000-08-01T06:35:42	2000-08-01T06:51:11			
Read mode	TIMED	TIMED			

2.3 Aspect



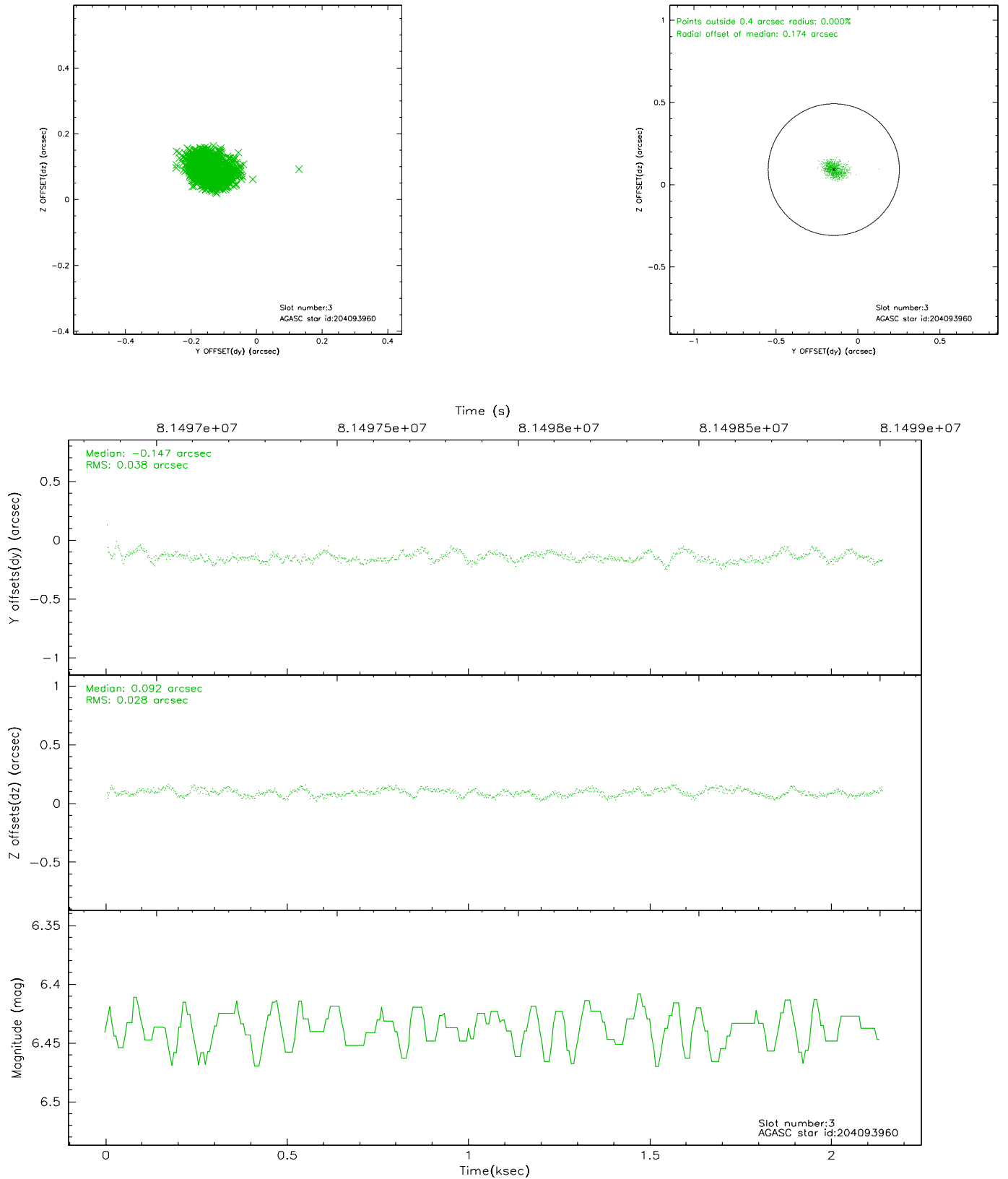


Slot Statistics

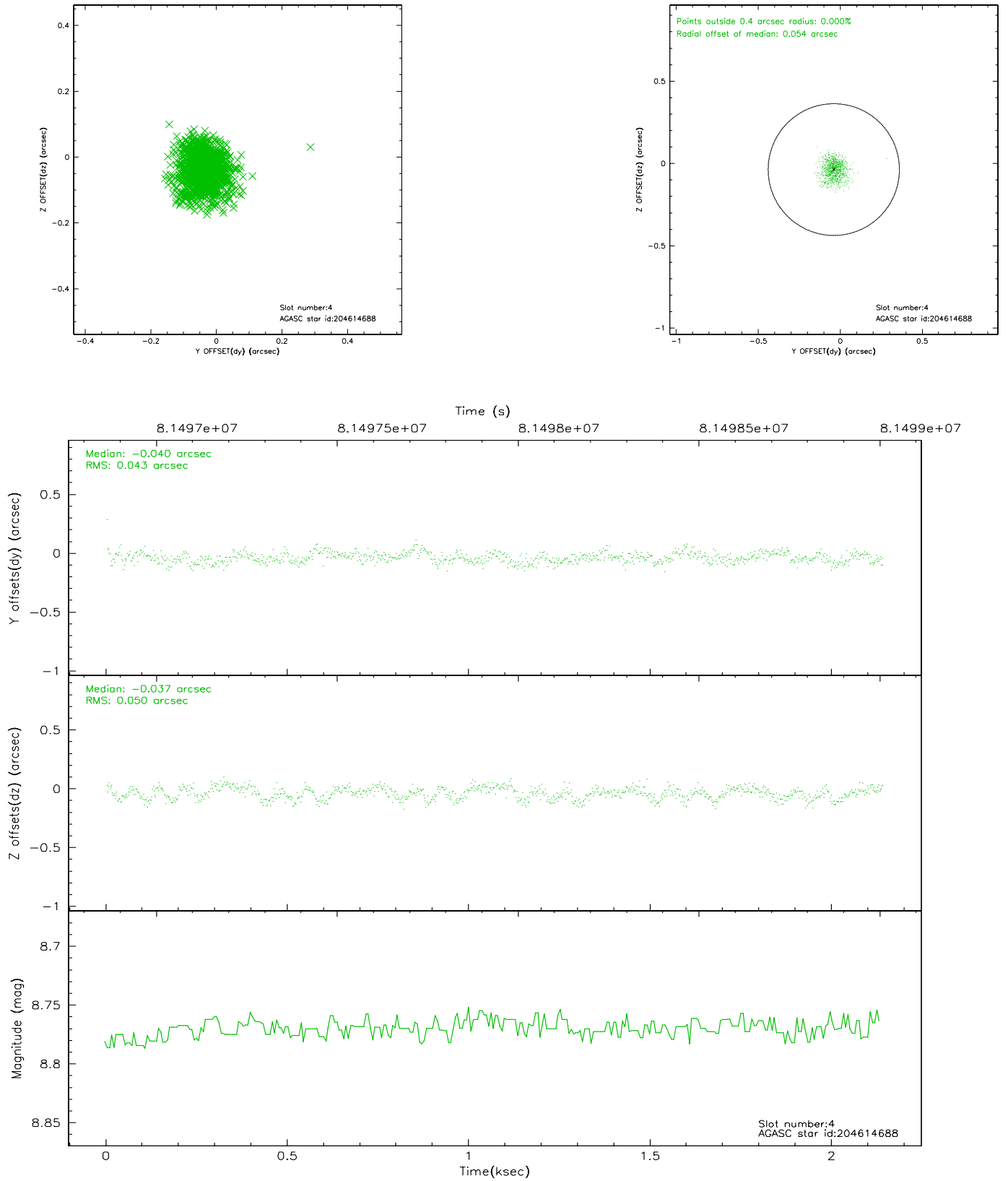
slot	status	id	mag	n_pts	med_dy	med_dz	dr1	dr2	ra	dec	mean_y	mean_z
0	FID	ACIS-S-2	7.11	522	-0.016	0.015	0.006	0.010	0.000000	0.000000	-754.55	-1725.70
1	FID	ACIS-S-4	7.21	521	-0.051	0.004	0.005	0.009	0.000000	0.000000	2157.31	179.63
2	FID	ACIS-S-5	7.24	522	0.036	-0.010	0.005	0.009	0.000000	0.000000	-1803.41	176.75
3	GUIDE	204093960	6.44	1044	-0.147	0.092	0.050	0.079	269.158116	18.612427	-1131.04	-130.43
4	GUIDE	204614688	8.77	1044	-0.040	-0.037	0.070	0.112	269.042898	18.986292	-1941.72	-1275.35
5	GUIDE	204090096	9.45	1043	0.057	-0.040	0.090	0.147	269.313474	17.815179	782.91	2070.53
6	GUIDE	204084616	8.51	1044	0.030	-0.109	0.065	0.102	268.495599	18.564286	409.11	-1793.56
7	GUIDE	204086416	8.63	1043	0.108	0.097	0.058	0.091	268.577725	17.900430	2110.96	-96.08

2.4 Star Slots

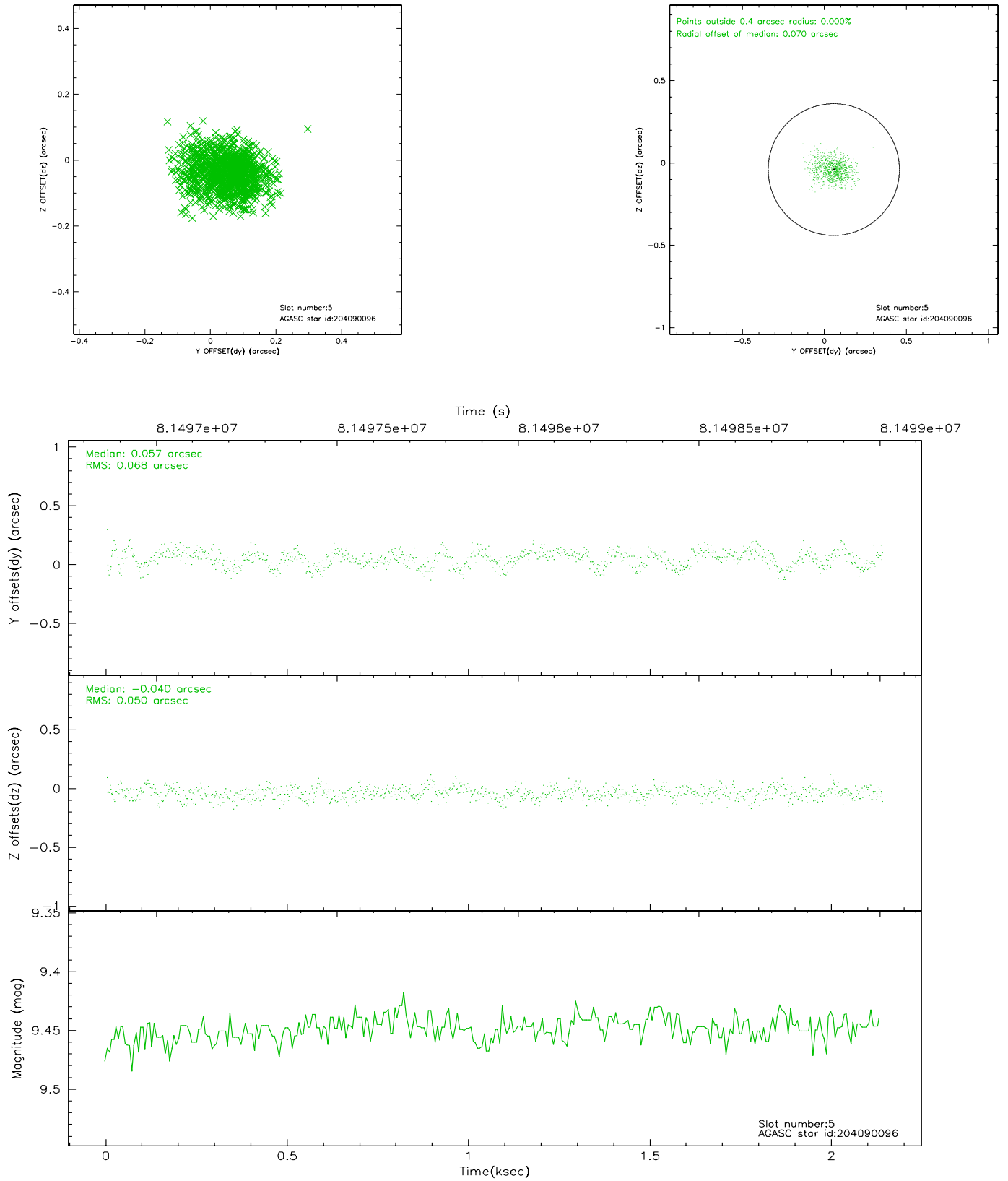
2.4.1 Slot 3



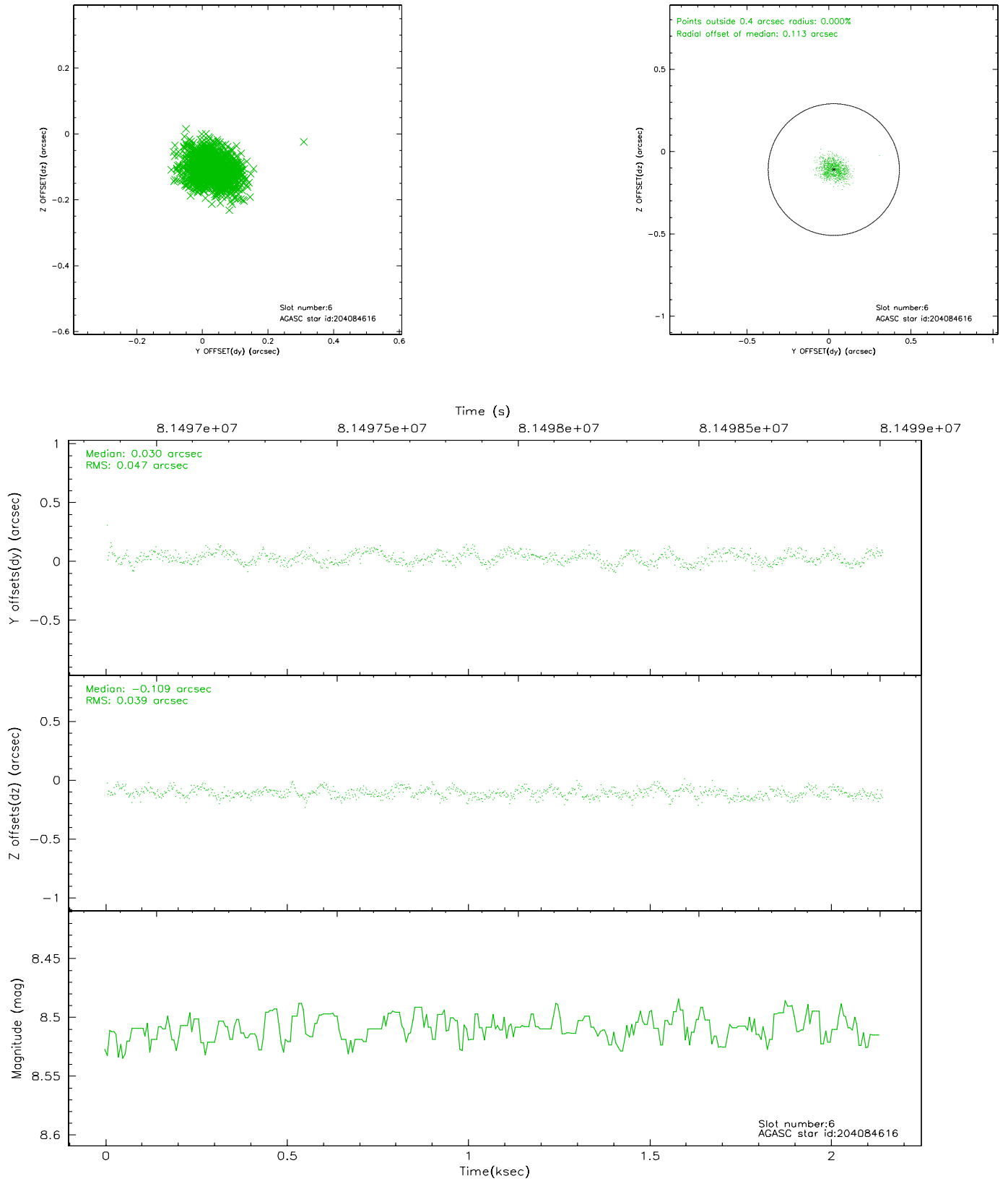
2.4.2 Slot 4



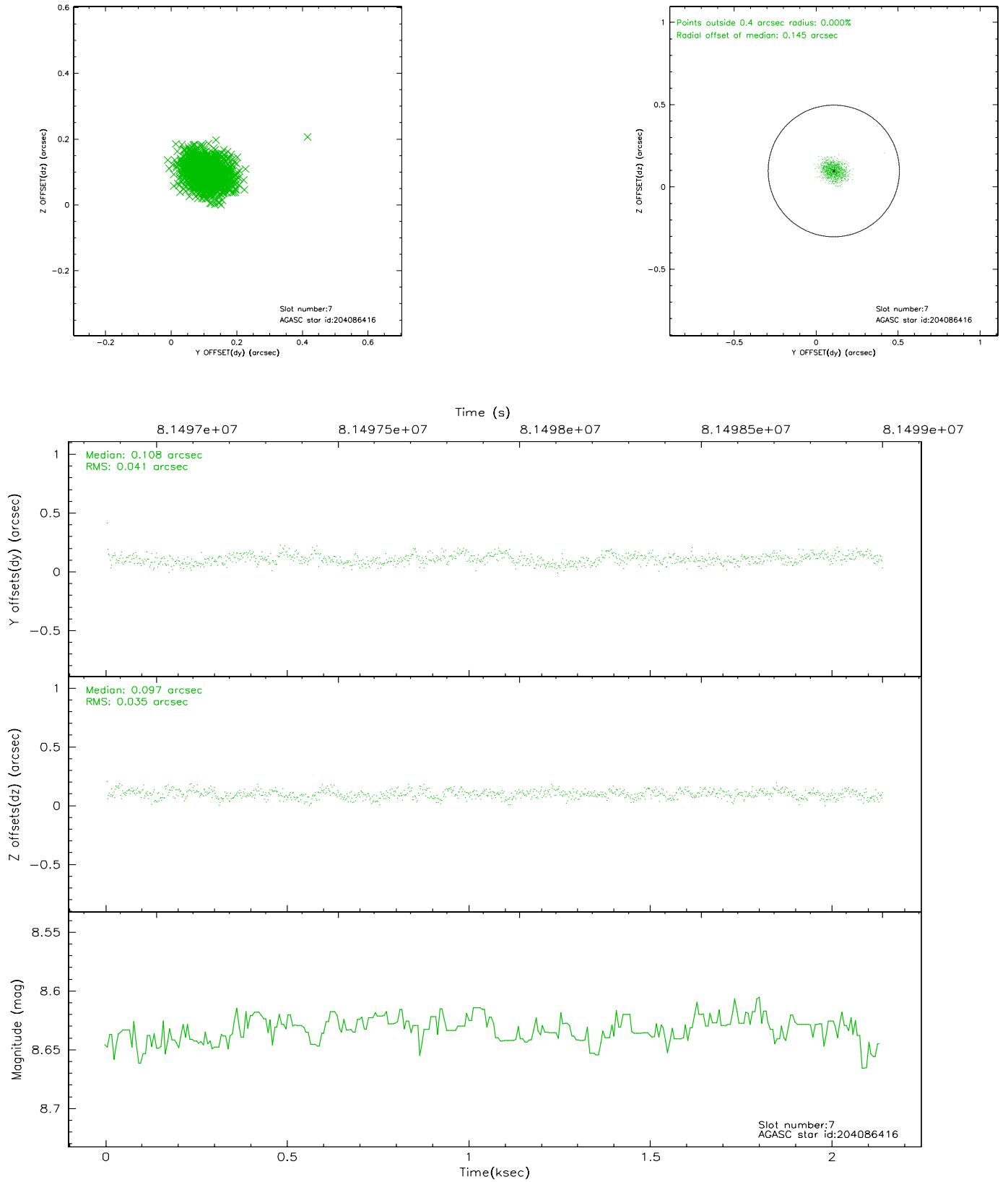
2.4.3 Slot 5



2.4.4 Slot 6

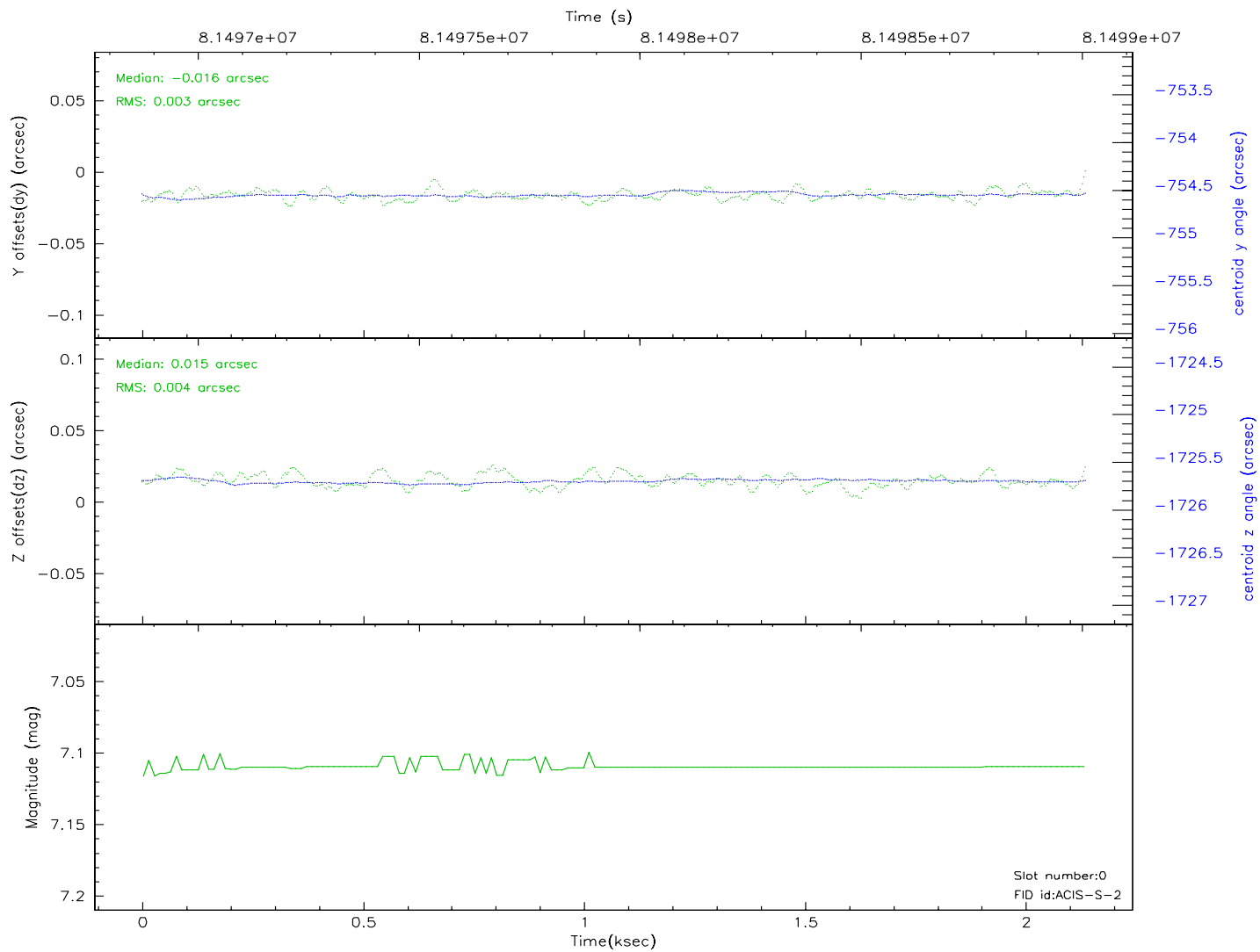
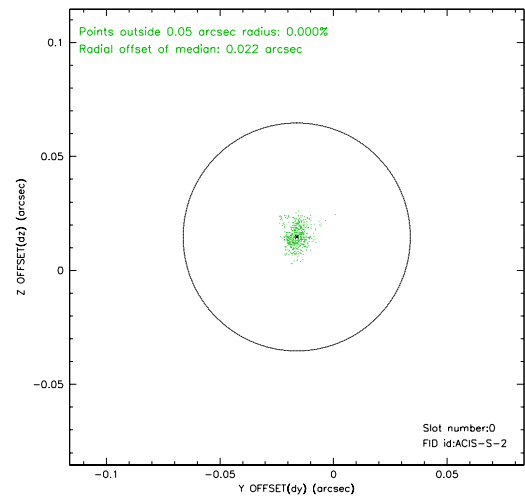
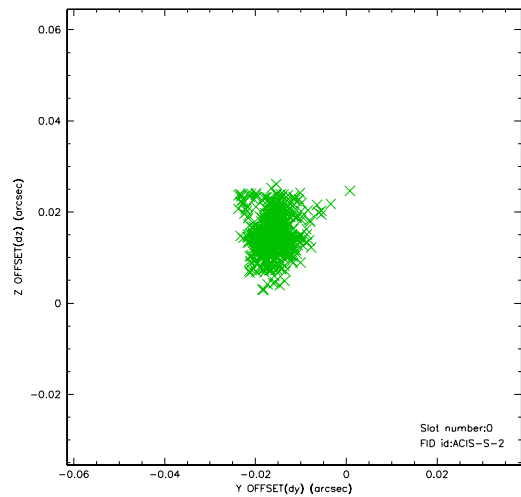


2.4.5 Slot 7

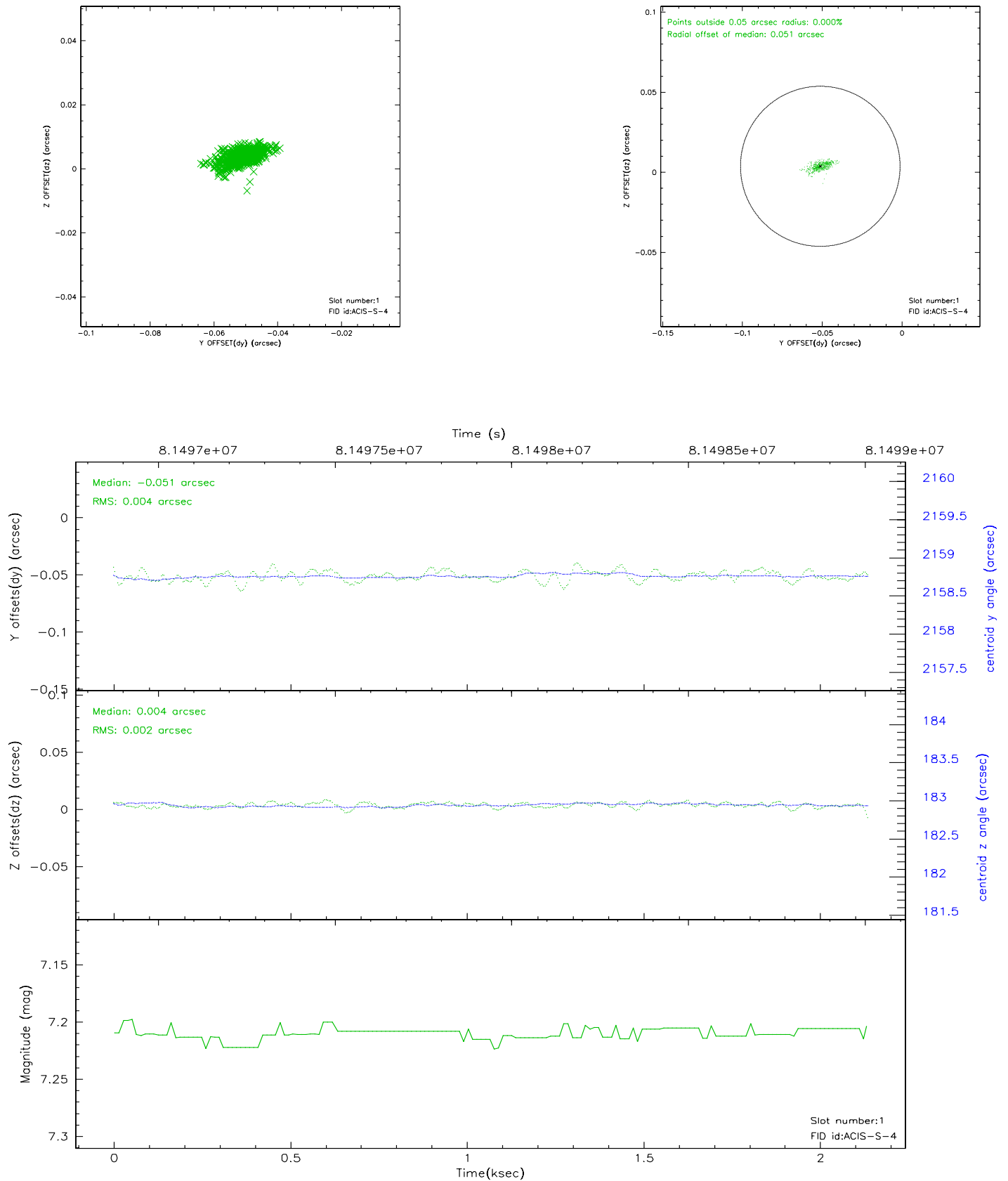


2.5 FID Slots

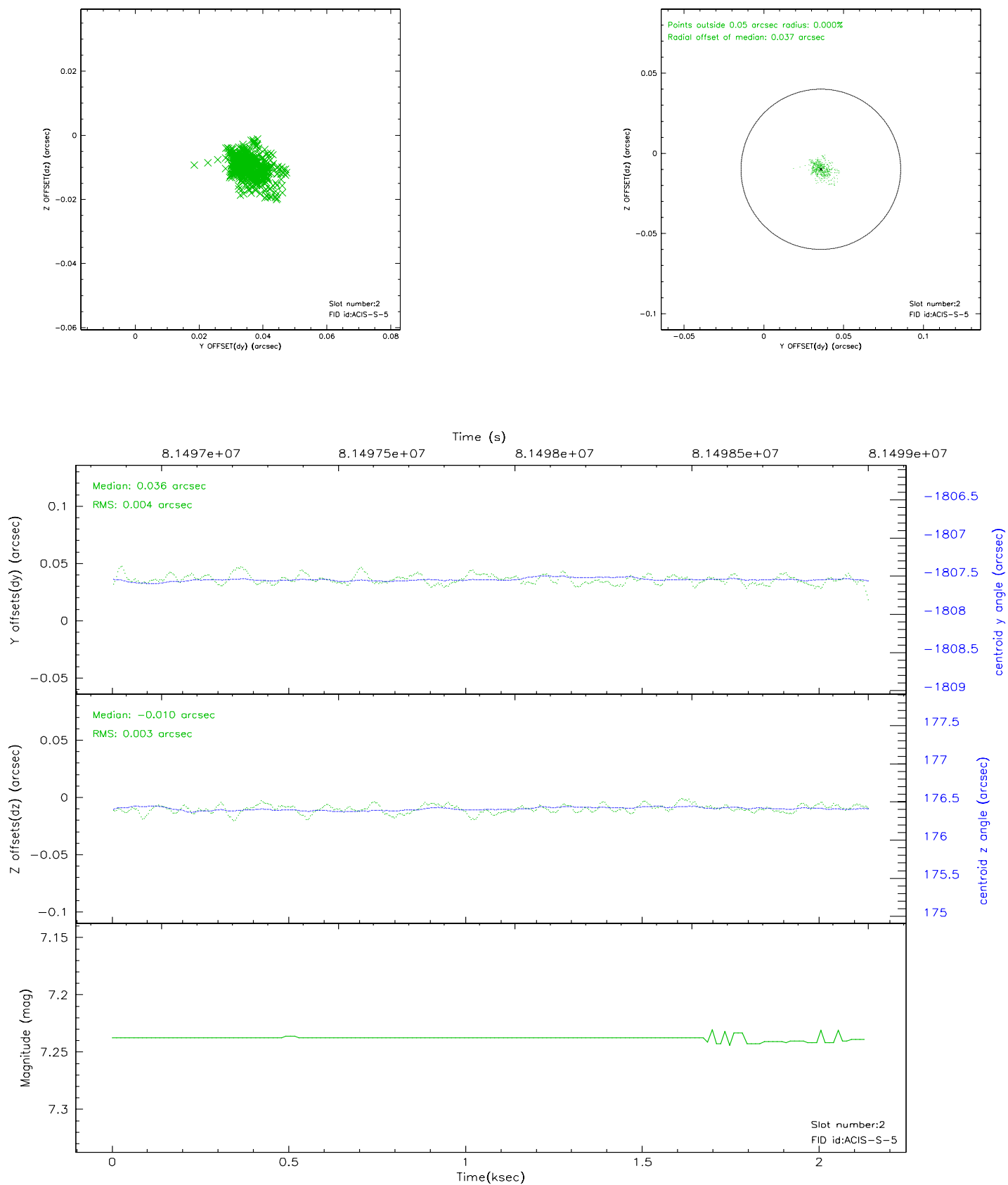
2.5.1 Slot 0



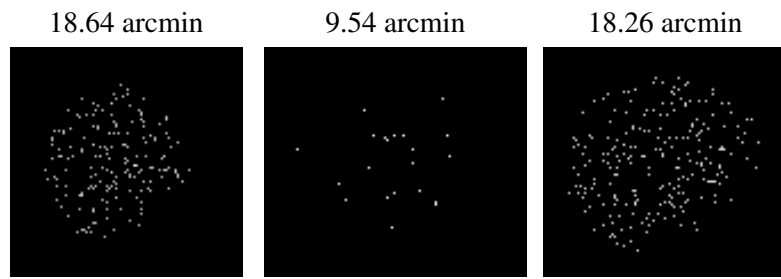
2.5.2 Slot 1



2.5.3 Slot 2



3 Point Sources



A Summary

A.1 Status

V&V Scientist	Beth Sundheim
V&V Date (YYYY-MM-DD)	2007.06.01
V&V Edition	1
V&V Disposition and Status	OK
V&V Charge Time	2.131

A.2 Comments