

V&V Reference Report

L2 ASCDS Version : 8.4.5

Observation 404 - L2 Version 4
Chandra X-Ray Center

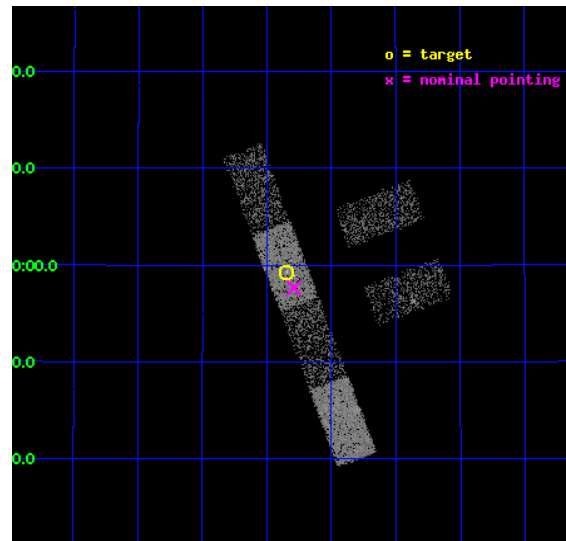
L2 Processing Date : Aug 29 2012

Contents

1	Front	2
2	OBI	3
2.1	OBI	3
2.1.1	Images	3
2.1.2	Bias	3
2.1.3	Parameters	4
2.1.4	Events	4
2.2	Compared Parameters	5
2.3	Aspect	6
2.4	Star Slots	9
2.4.1	Slot 3	9
2.4.2	Slot 4	10
2.4.3	Slot 5	11
2.4.4	Slot 6	12
2.4.5	Slot 7	13
2.5	FID Slots	14
2.5.1	Slot 0	14
2.5.2	Slot 1	15
2.5.3	Slot 2	16
A	Summary	17
A.1	Status	17
A.2	Comments	17

1 Front

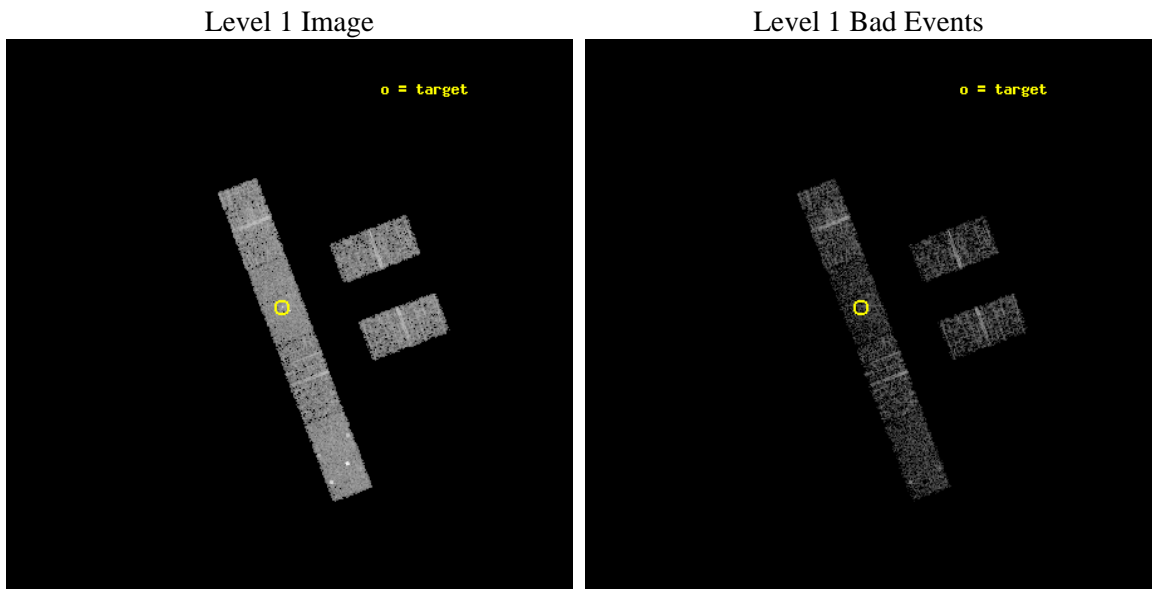
seq_num	700076	Sequence number
obs_id	404	Observation id
title	LOW-LUMINOSITY ACTIVE GALACTIC NUCLEI IN NEARBY GALAXIES	Proposal
observer	Professor Gordon Garmire	Principal investigator
object	NGC 4565	Source name
dtcycle	0	
cycle	P	events from which exps? Prim/Second/Both
ra_targ	189.08625	Observer's specified target RA [deg]
dec_targ	25.987778	Observer's specified target Dec [deg]
ra_nom	189.07272639401	Nominal RA [deg]
dec_nom	25.960941919442	Nominal Dec [deg]
roll_nom	249.28990160388	Nominal Roll [deg]
revision	4	Processing version of data
ontime	2892.4127875417	Sum of GTIs [s]
livetime	2827.9358501582	Livetime [s]
ontime2	2892.33070755	Sum of GTIs [s]
ontime3	2892.2486275434	Sum of GTIs [s]
ontime5	2892.3717475384	Sum of GTIs [s]
ontime6	2892.2896675467	Sum of GTIs [s]
ontime7	2892.4127875417	Sum of GTIs [s]
ontime8	2892.453827545	Sum of GTIs [s]
l2events	15464	Number of level 2 events



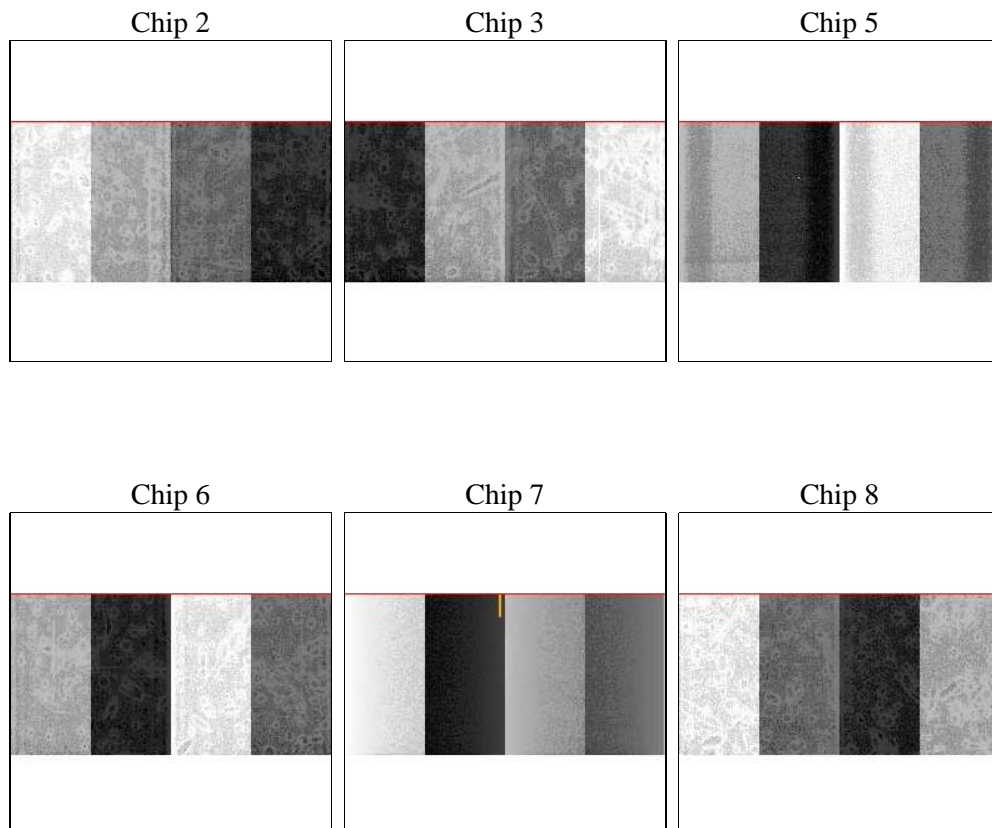
2 OBI

2.1 OBI

2.1.1 Images



2.1.2 Bias



2.1.3 Parameters

obi_num	0	Obi number	sched_exp_time	2500.000000	[s] Scheduled observation exposure time
ascdsver	8.4.5	Processing system revision	ontime	2892.4127875417	Sum of GTIs [s]
caldsver	4.5.1.1	 	ontime2	2892.33070755	Sum of GTIs [s]
date	2012-08-30T01:09:50	Date and time of file creation	ontime3	2892.2486275434	Sum of GTIs [s]
revision	4	Processing version of data	ontime5	2892.3717475384	Sum of GTIs [s]
			ontime6	2892.2896675467	Sum of GTIs [s]
			ontime7	2892.4127875417	Sum of GTIs [s]
			ontime8	2892.453827545	Sum of GTIs [s]
			l1events	74346	Number of level 1 events

2.1.4 Events

	ccd 2	ccd 3	ccd 5	ccd 6	ccd 7	ccd 8
level 1 events	11111	10450	15417	10491	12183	14694
rejected events	9947	9282	7026	9231	6472	12279
rejected %	89%	88%	45%	87%	53%	83%

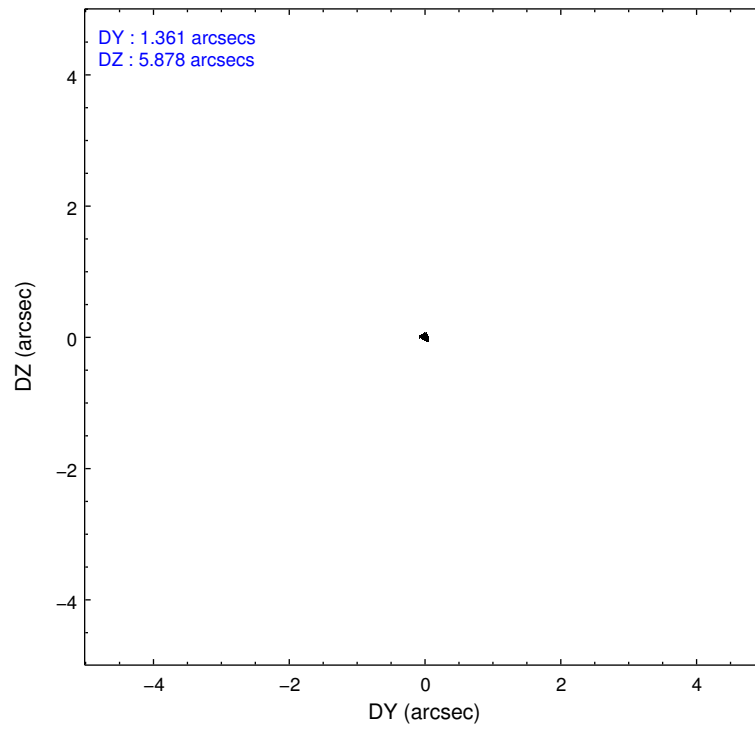
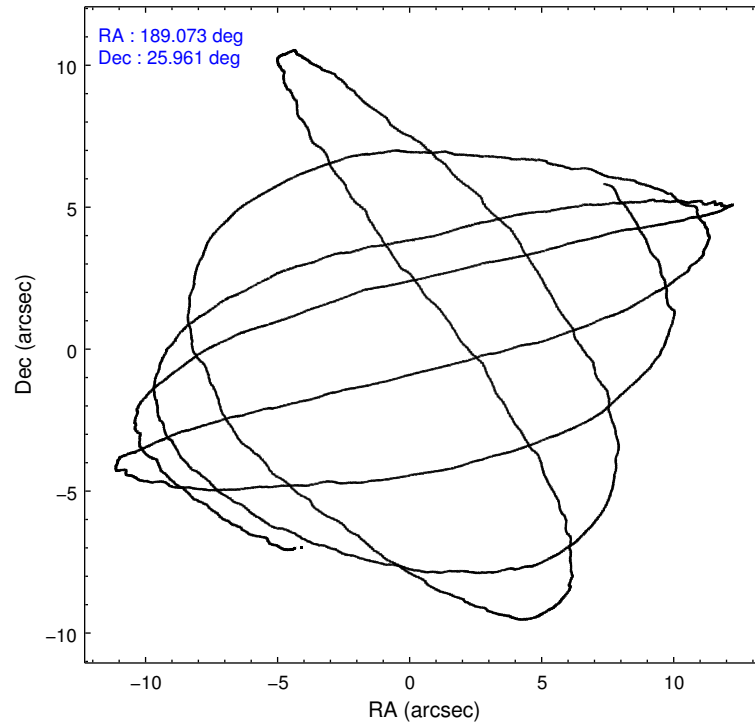
	ccd 2	ccd 3	ccd 5	ccd 6	ccd 7	ccd 8
grade 0 events	486	458	2838	514	802	769
	4%	4%	18%	4%	6%	5%
grade 1 events	2	1	106	2	12	5
	0%	0%	0%	0%	0%	0%
grade 2 events	230	237	1857	254	1176	526
	2%	2%	12%	2%	9%	3%
grade 3 events	149	145	373	163	579	287
	1%	1%	2%	1%	4%	1%
grade 4 events	130	125	311	126	562	268
	1%	1%	2%	1%	4%	1%
grade 5 events	291	292	1023	339	1064	502
	2%	2%	6%	3%	8%	3%
grade 6 events	172	205	3018	203	2597	566
	1%	1%	19%	1%	21%	3%
grade 7 events	9651	8987	5891	8890	5391	11771
	86%	86%	38%	84%	44%	80%

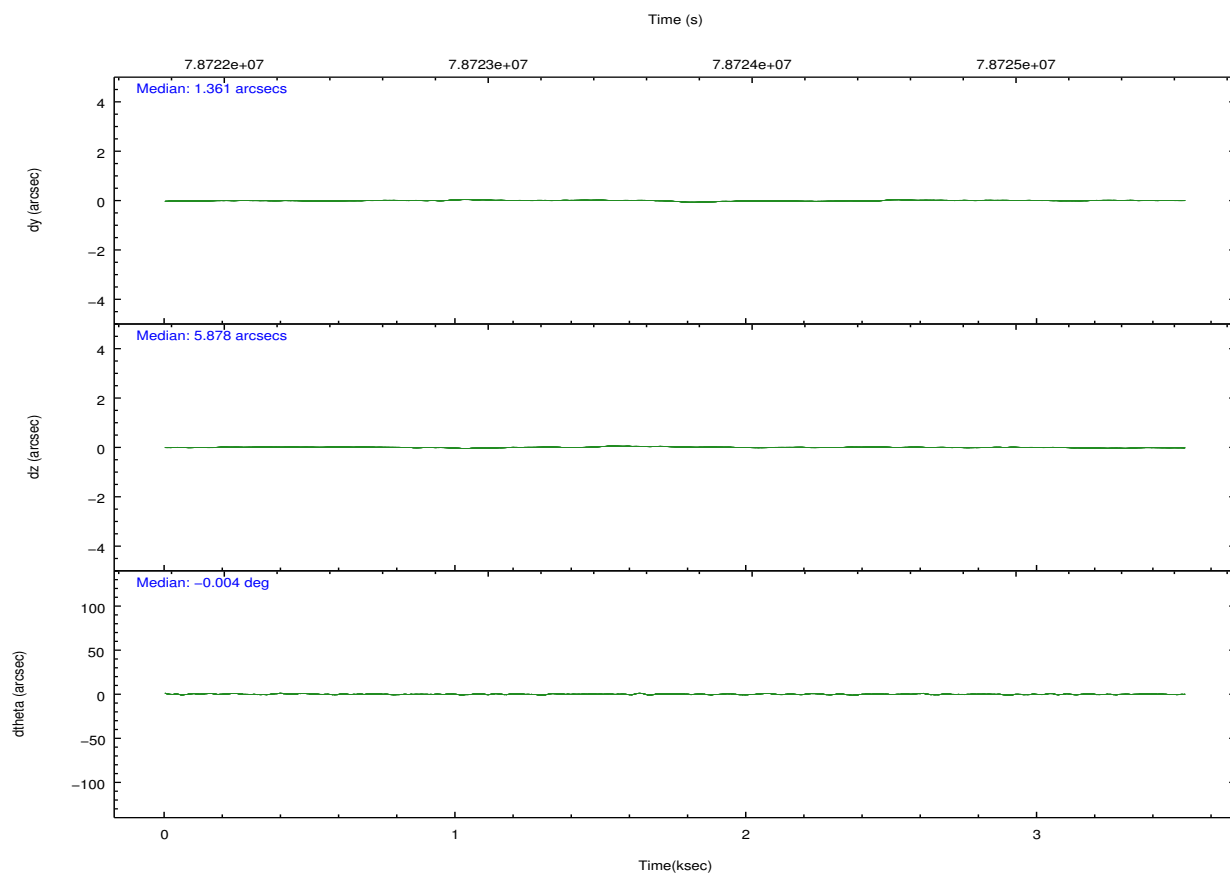
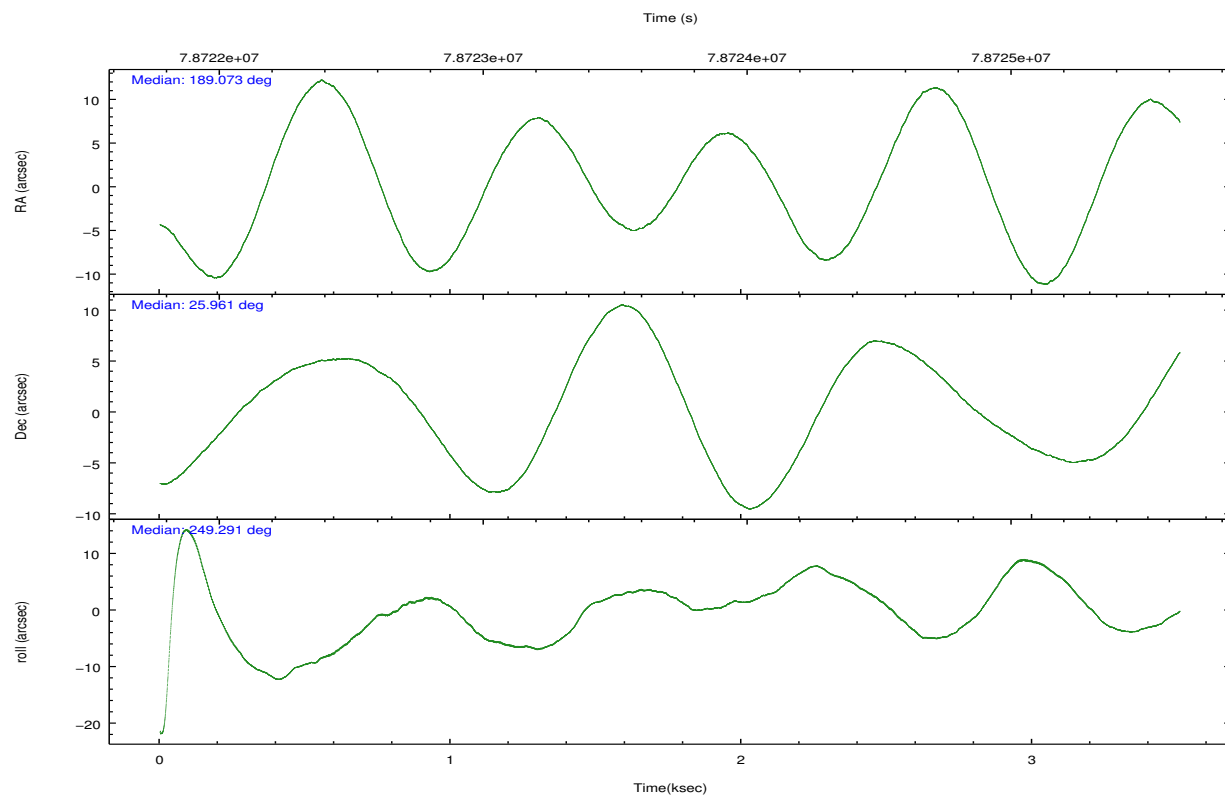
2.2 Compared Parameters

Parameter	Planned	Actual
Instrument	ACIS	ACIS
Detector	ACIS-235678	ACIS-235678
Grating	NONE	NONE
Data mode	FAINT	FAINT
Observation mode	POINTING	POINTING
[deg] Pointing RA	189.067719	189.0727263940111
[deg] Pointing Dec	25.988069	25.9609419194423
[deg] Pointing Roll	249.135615	249.28990160388
[s] Window start time (MET)	63072064.184000	63072064.184000
[s] Window stop time (MET)	84153664.184000	84153664.184000
[mm] SIM focus pos	-0.684267	-0.6828225247311905
[mm] SIM defocus	0	0.001444936568705701
[mm] SIM translation stage pos	-190.132523	-190.1425803651734
[mm] SIM translation stage offset	0	0.01005778216563158
[s] Observation start time (MET)	78722963.184000	78721593.986977
Observation start date	2000-06-30T03:28:19	2000-06-30T03:06:33
[s] Observation end time (MET)	78725463.184000	78726326.924652
Observation end date	2000-06-30T04:09:59	2000-06-30T04:25:26
Read mode	TIMED	TIMED

Parameter	Planned	Actual
Obspar format version number	7	7
Obspar file type	PREDICTED	ACTUAL
Obspar update status	NONE	UPDATED
Number of optional ACIS chips dropped	0	0
On-chip summing requested	N	N
Subarray requested	CUSTOM	1/2
Subarray start row	255	255
Subarray row count	512	512
Alternating exposures requested	N	N
[s] Primary exposure time	0.000000	1.8

2.3 Aspect



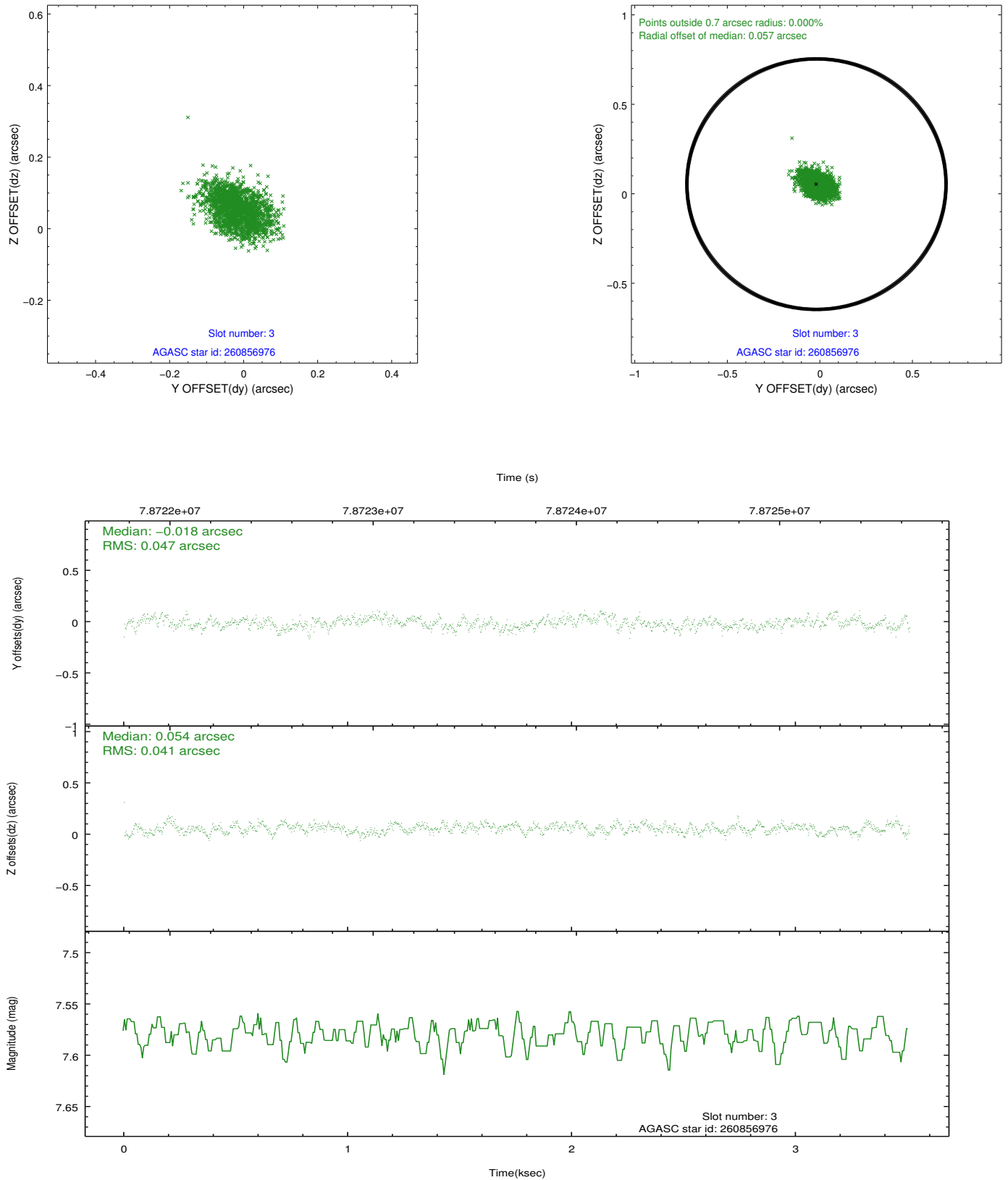


Slot Statistics

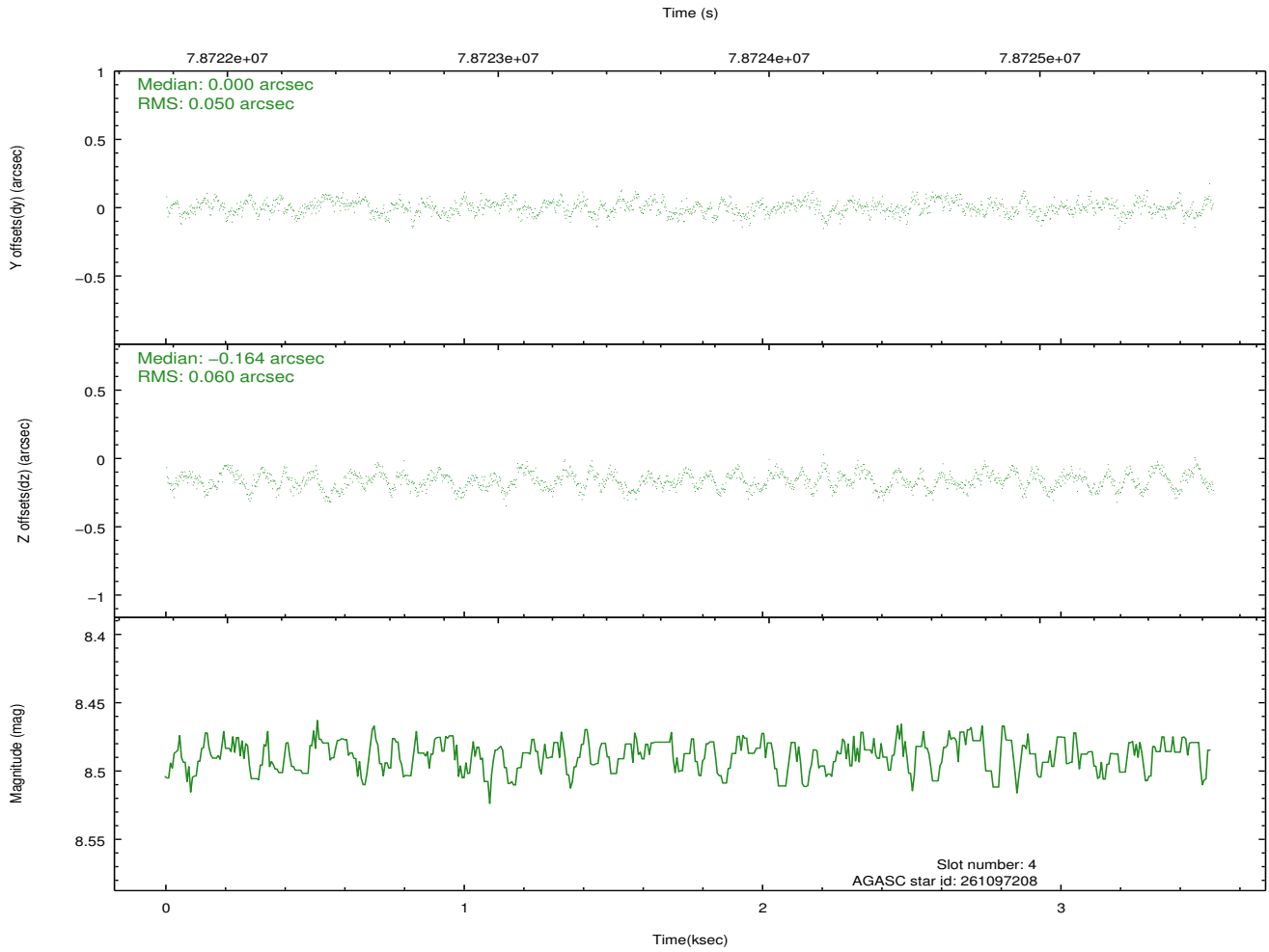
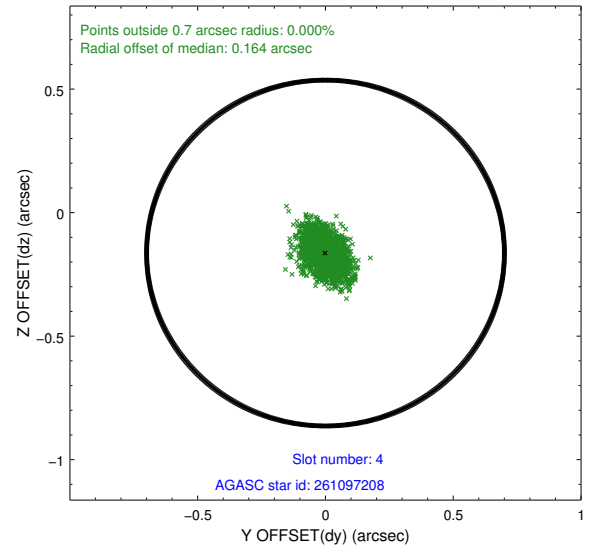
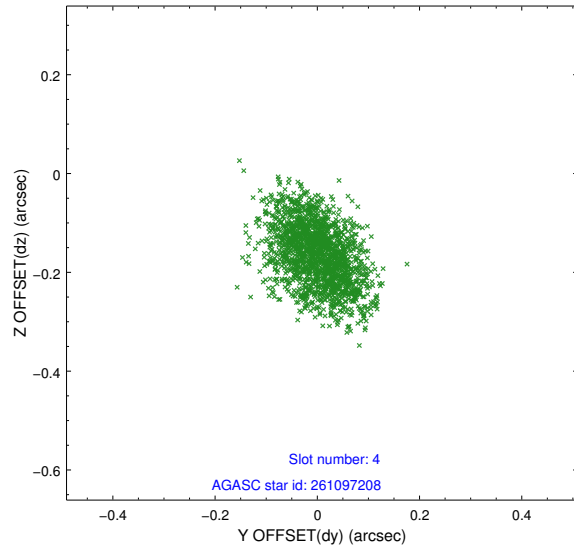
slot	status	id	mag	n_pts	med_dy	med_dz	dr1	dr2	ra	dec	mean_y	mean_z
0	FID	ACIS-S-2	7.11	856	-0.037	0.012	0.006	0.011	0.000000	0.000000	-753.98	-1726.95
1	FID	ACIS-S-4	7.21	856	-0.014	0.015	0.005	0.010	0.000000	0.000000	2158.50	179.69
2	FID	ACIS-S-5	7.23	856	0.019	-0.017	0.006	0.010	0.000000	0.000000	-1804.46	175.36
3	GUIDE	260856976	7.58	1712	-0.018	0.054	0.066	0.108	189.008015	25.423610	1967.81	542.60
4	GUIDE	261097208	8.49	1711	0.000	-0.164	0.084	0.136	188.588563	26.289040	-463.23	-1831.65
5	GUIDE	260853184	9.18	1711	0.015	0.068	0.076	0.128	189.165500	25.791548	547.78	547.32
6	GUIDE	260846952	9.84	1709	0.136	-0.100	0.095	0.161	189.003435	25.755336	857.47	104.05
7	GUIDE	261096504	10.07	1711	-0.134	0.141	0.120	0.191	189.562259	26.357811	-1814.53	1015.95

2.4 Star Slots

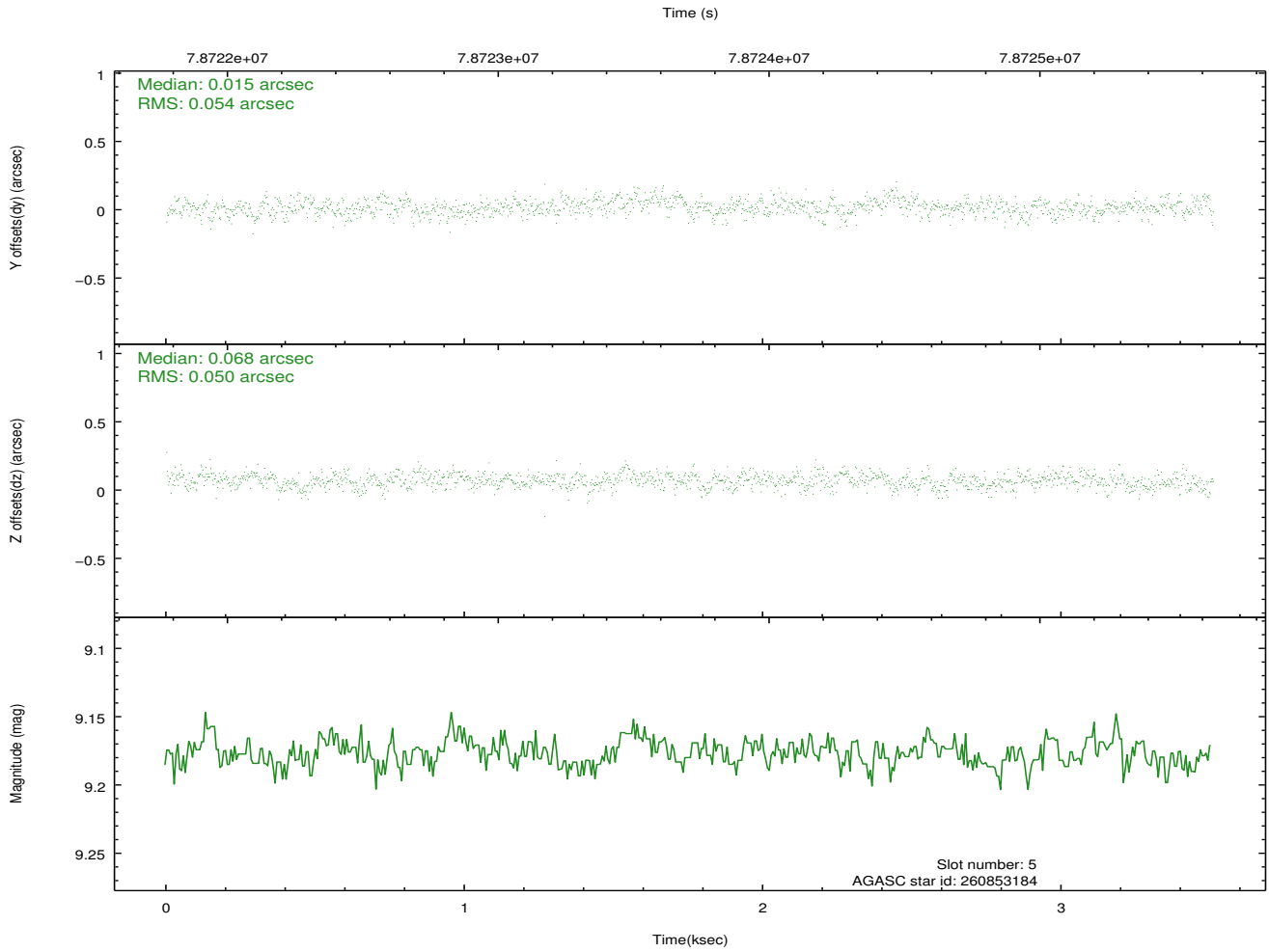
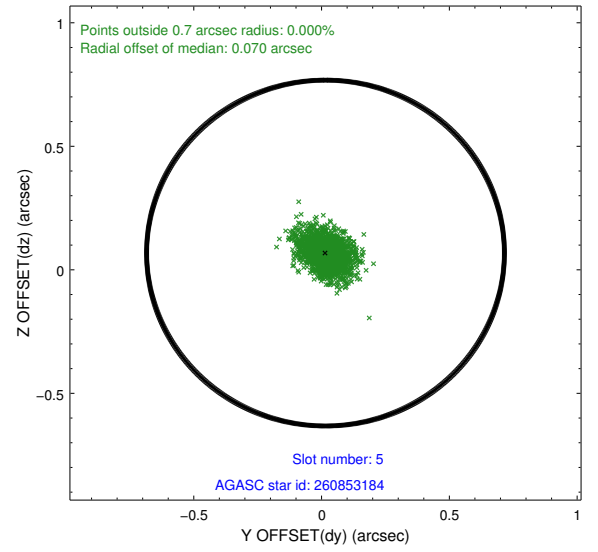
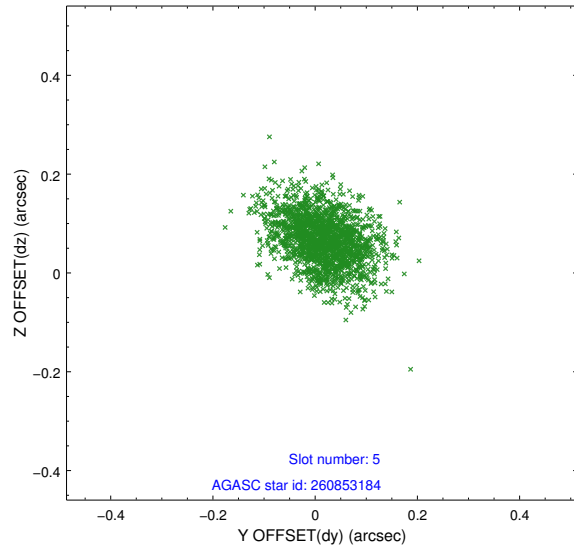
2.4.1 Slot 3



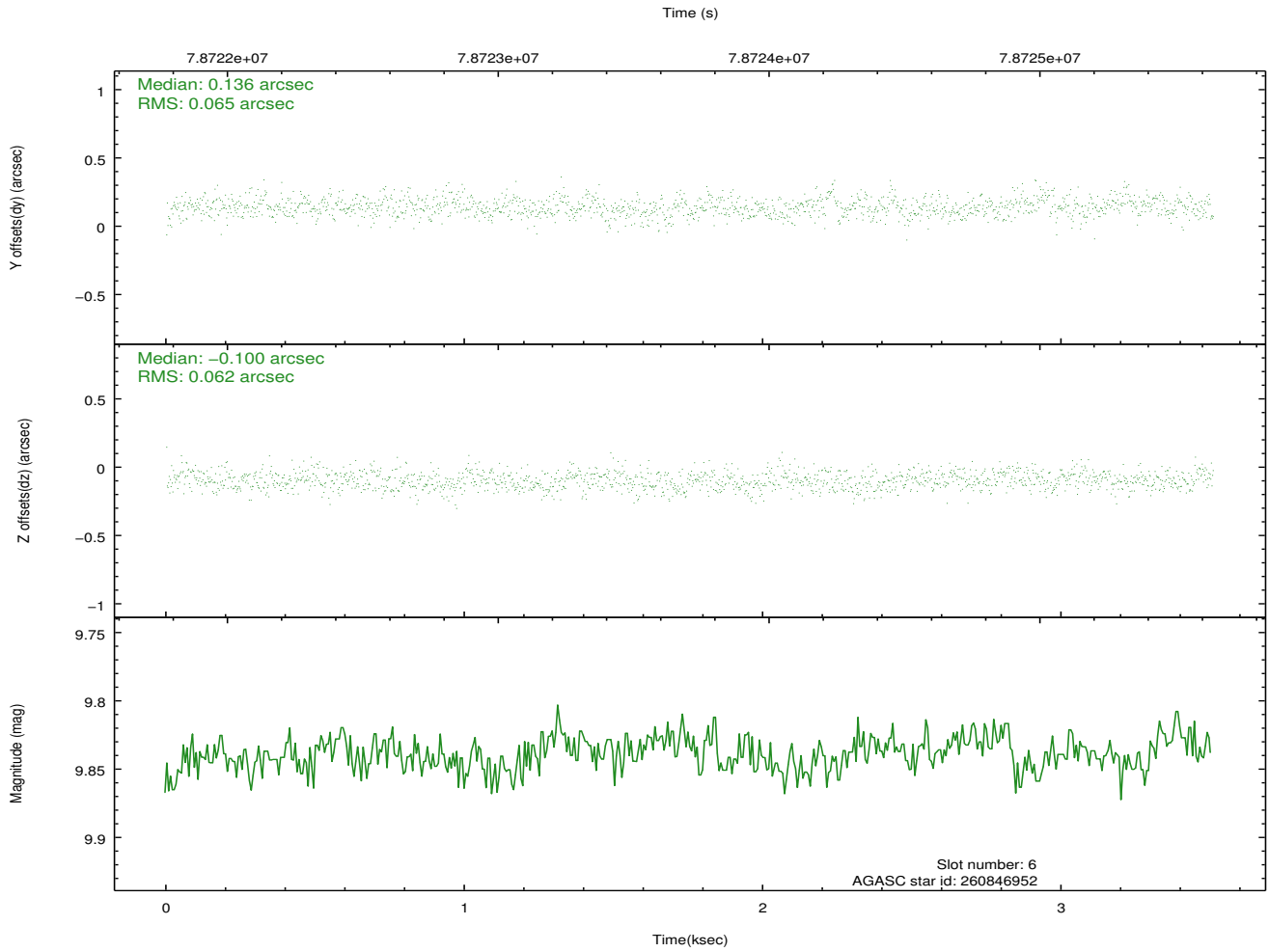
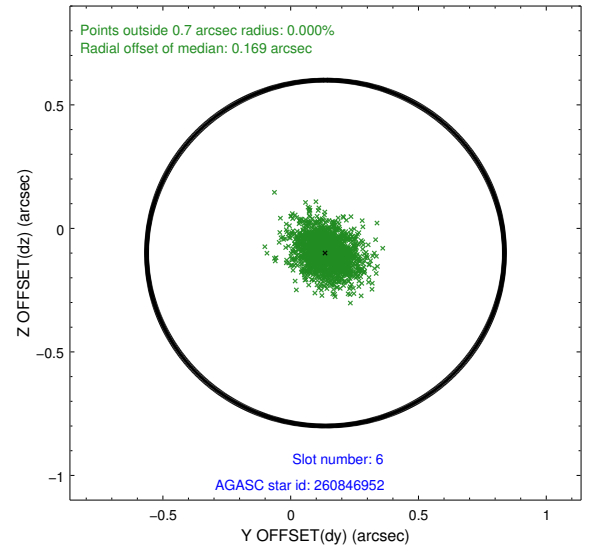
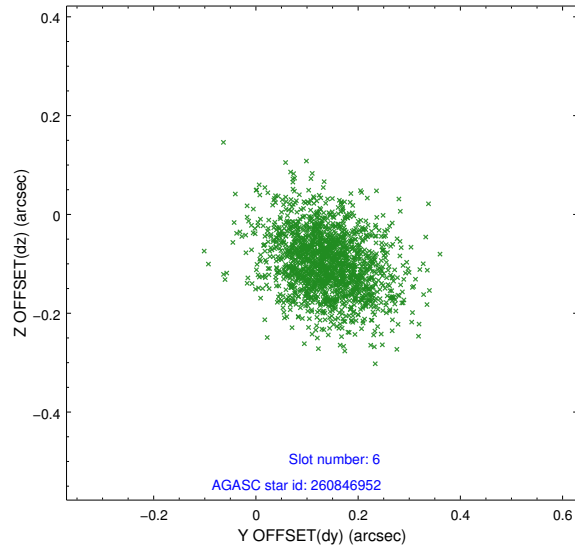
2.4.2 Slot 4



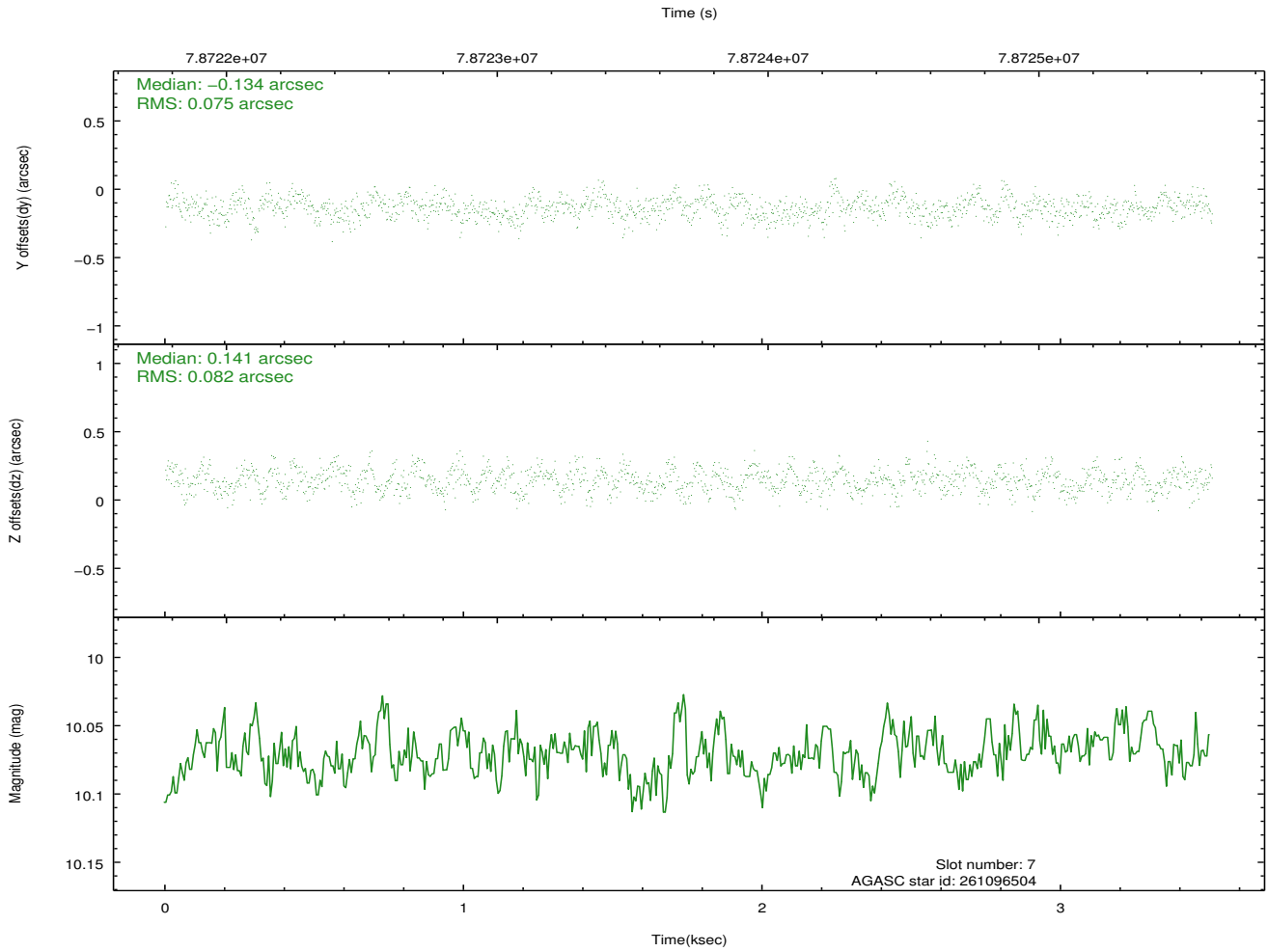
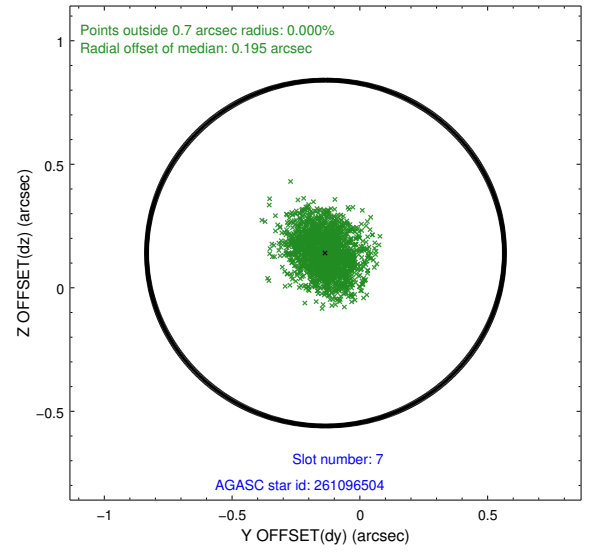
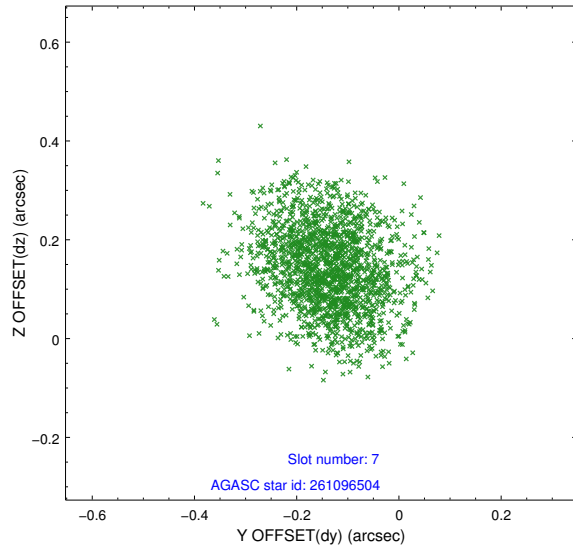
2.4.3 Slot 5



2.4.4 Slot 6

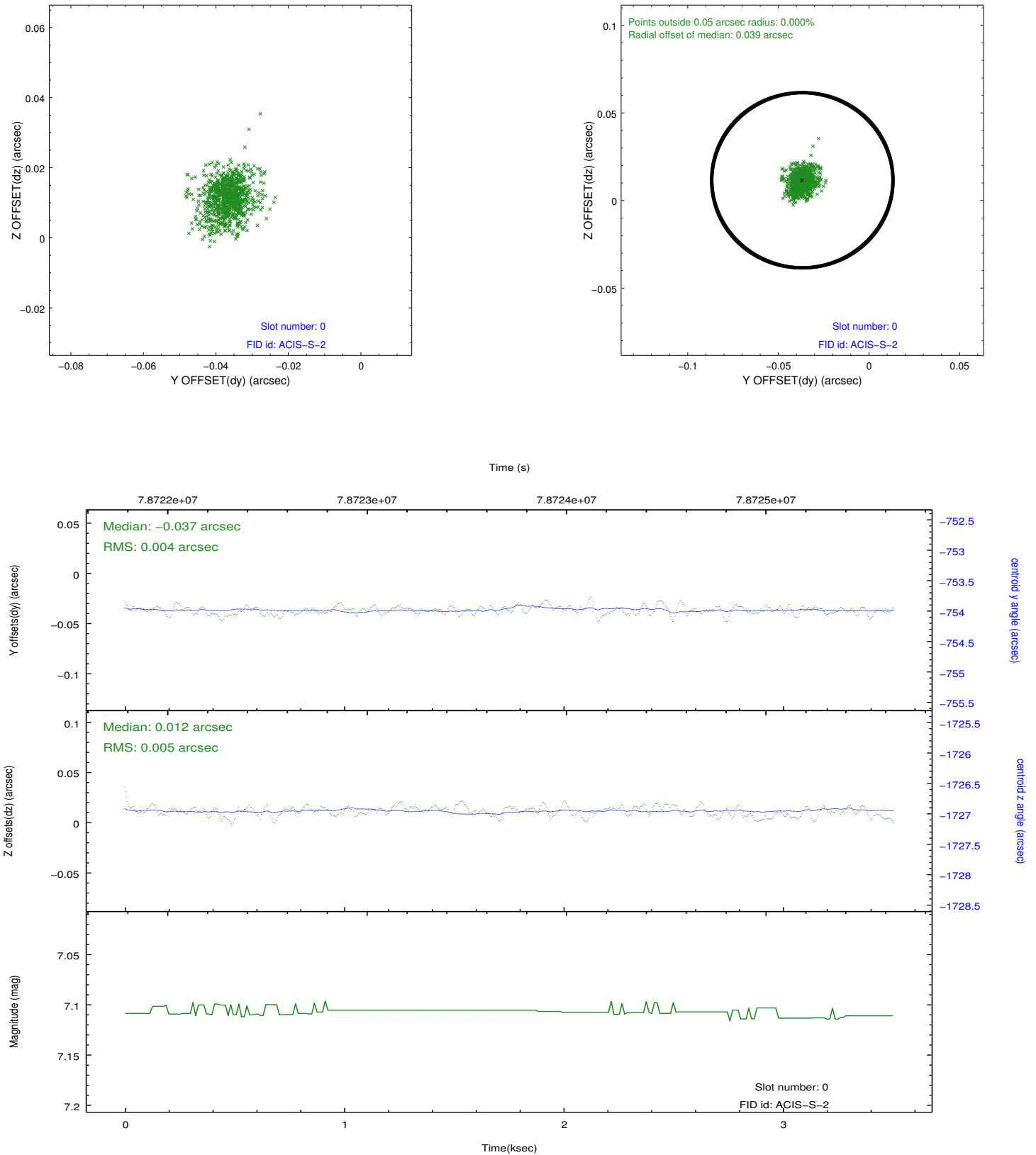


2.4.5 Slot 7

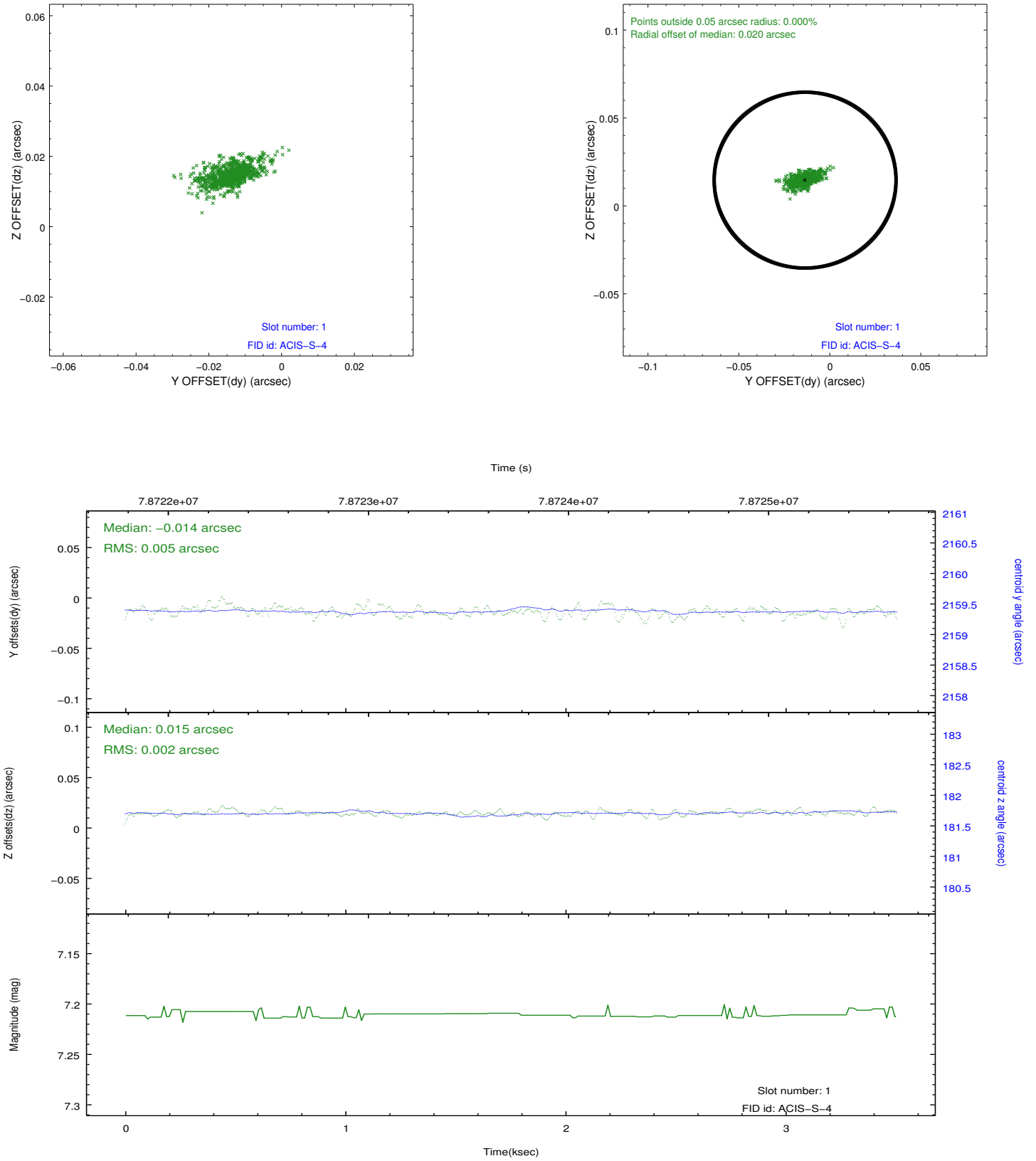


2.5 FID Slots

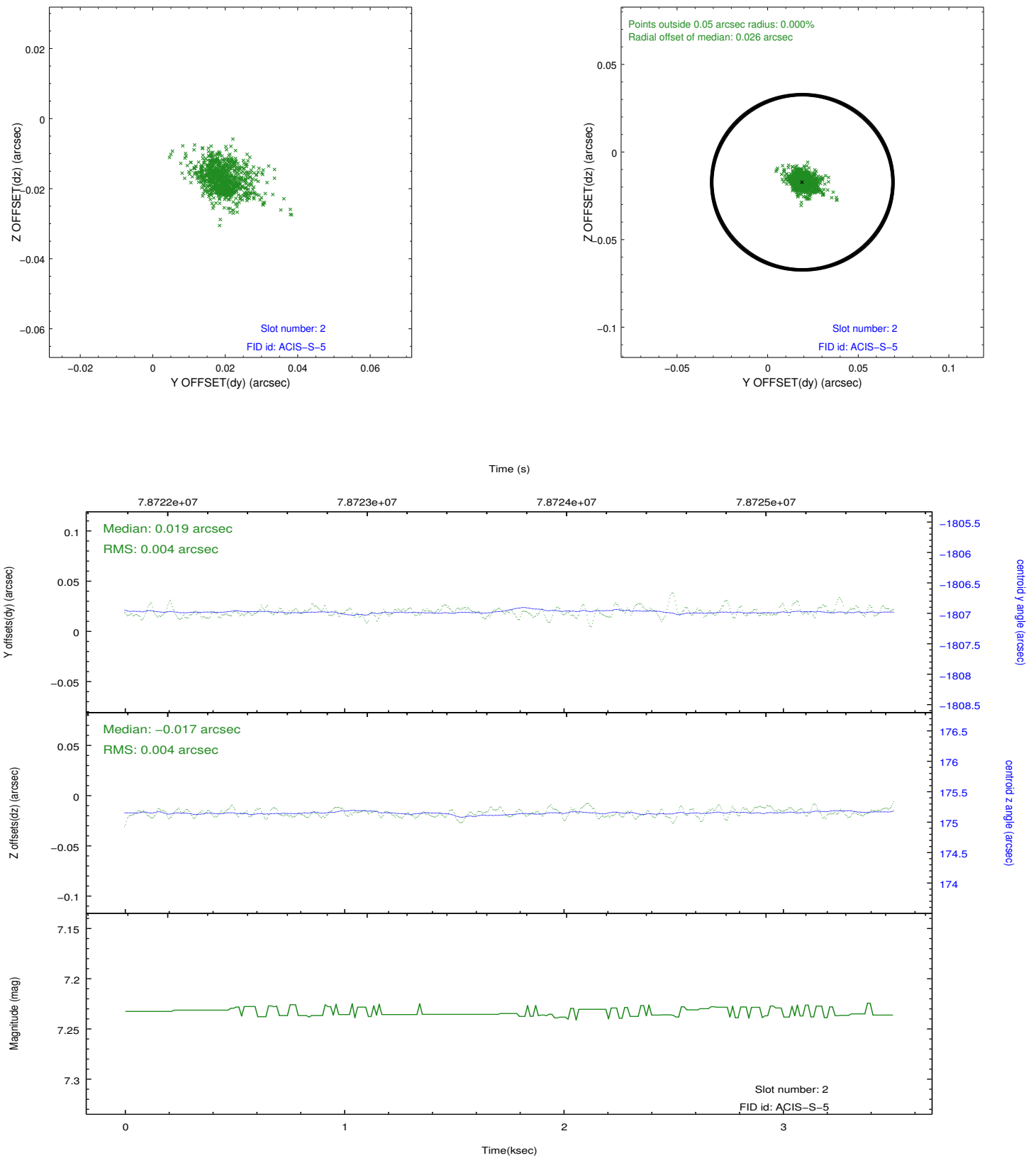
2.5.1 Slot 0



2.5.2 Slot 1



2.5.3 Slot 2



A Summary

A.1 Status

V&V Scientist	Jen Lauer
V&V Date (YYYY-MM-DD)	2012.09.04
V&V Edition	1
V&V Disposition and Status	OK
V&V Charge Time	2.896

A.2 Comments

Charge time for this ObsId remains at previous value of 2.896 ks although with the current processing the charge time would have been 2.892 ksec.

Window constraint met.