

V&V Reference Report

L2 ASCDS Version : 7.6.10

Observation 404 - L2 Version 001
Chandra X-Ray Center

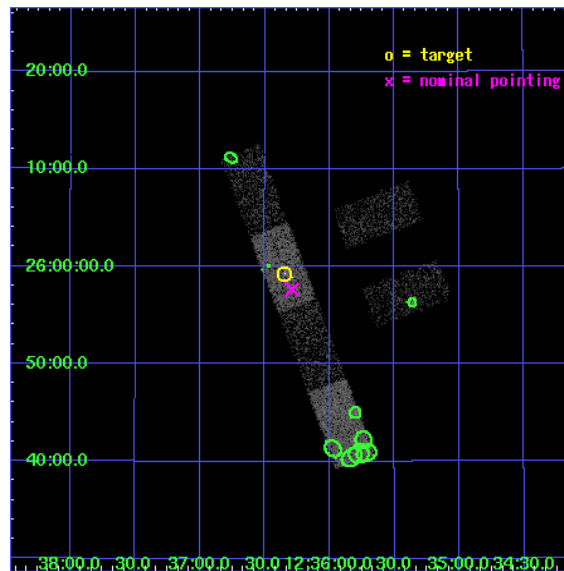
L2 Processing Date : May 27 2007

Contents

| | | |
|----------|-------------------------------|-----------|
| 1 | Front | 2 |
| 2 | OBI | 3 |
| 2.1 | OBI | 3 |
| 2.1.1 | Images | 3 |
| 2.1.2 | Bias | 3 |
| 2.1.3 | Parameters | 4 |
| 2.1.4 | Events | 4 |
| 2.2 | Compared Parameters | 5 |
| 2.3 | Aspect | 6 |
| 2.4 | Star Slots | 9 |
| 2.4.1 | Slot 3 | 9 |
| 2.4.2 | Slot 4 | 10 |
| 2.4.3 | Slot 5 | 11 |
| 2.4.4 | Slot 6 | 12 |
| 2.4.5 | Slot 7 | 13 |
| 2.5 | FID Slots | 14 |
| 2.5.1 | Slot 0 | 14 |
| 2.5.2 | Slot 1 | 15 |
| 2.5.3 | Slot 2 | 16 |
| 3 | Point Sources | 17 |
| A | Summary | 18 |
| A.1 | Status | 18 |
| A.2 | Comments | 18 |

1 Front

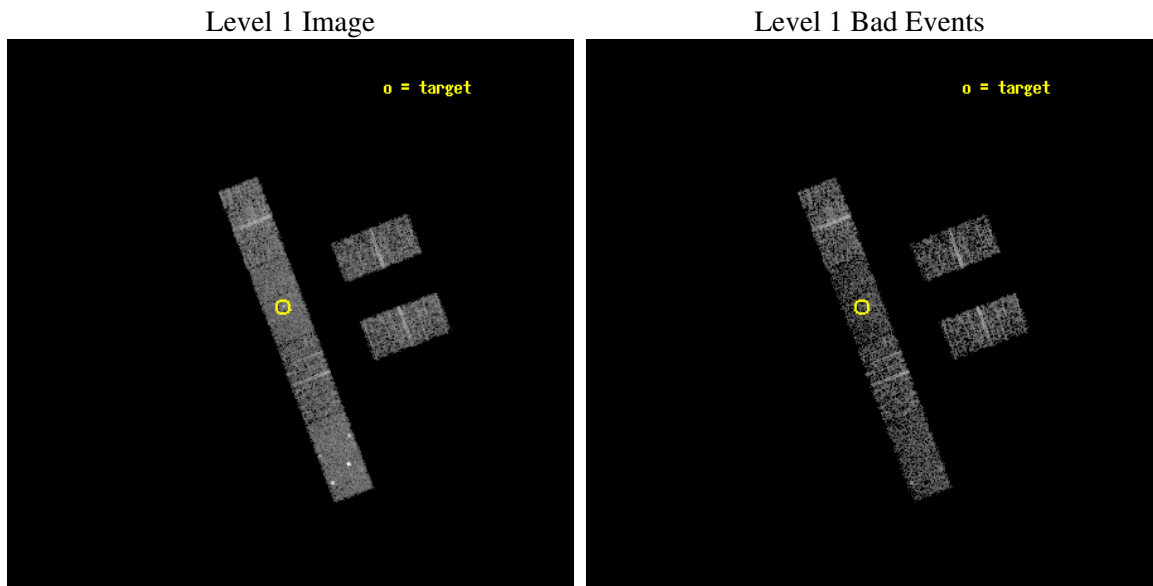
| | |
|----------|--|
| seq_num | 700076 |
| obs_id | 404 |
| title | LOW-LUMINOSITY ACTIVE GALACTIC NUCLEI IN NEARBY GALAXIES |
| observer | Prof. Gordon Garmire |
| object | NGC 4565 |
| dtcycle | 0 |
| cycle | P |
| ra_targ | 189.08625 |
| dec_targ | 25.987778 |
| ra_nom | 189.07272639401 |
| dec_nom | 25.960941919442 |
| roll_nom | 249.28990160388 |
| revision | 3 |
| ontime | 2892.5999952108 |
| livetime | 2828.118884641 |
| ontime2 | 2892.5999952108 |
| ontime3 | 2892.5999952108 |
| ontime5 | 2892.5999952108 |
| ontime6 | 2892.5999952108 |
| ontime7 | 2892.5999952108 |
| ontime8 | 2892.5999952108 |
| l2events | 15462 |



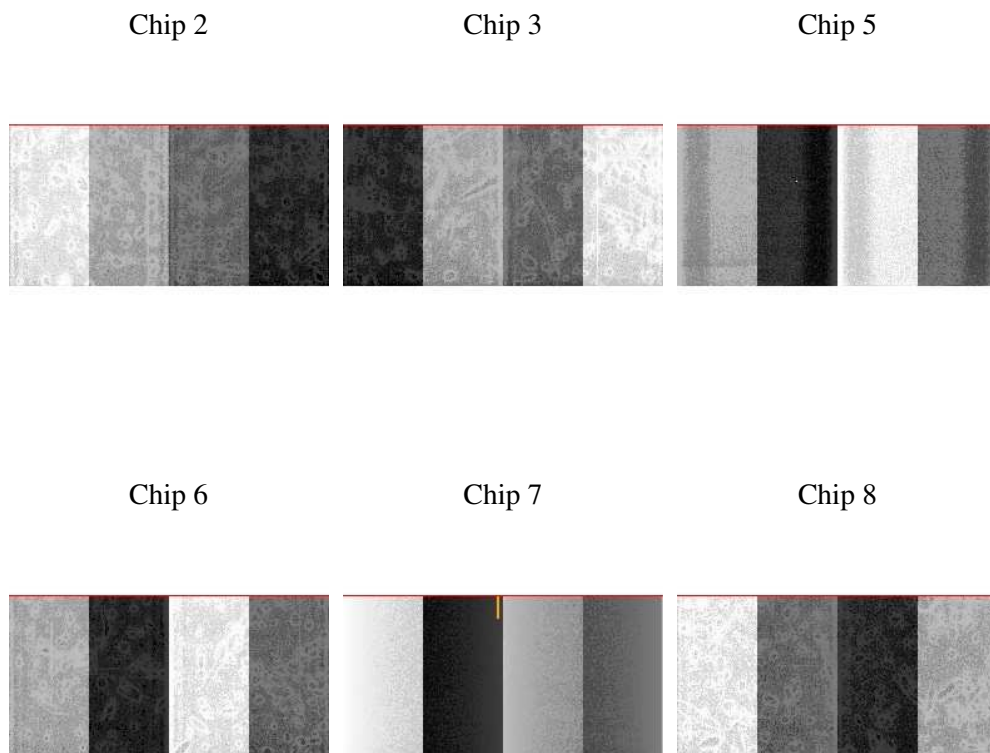
2 OBI

2.1 OBI

2.1.1 Images



2.1.2 Bias



2.1.3 Parameters

| | |
|----------|---------------------|
| obi_num | 0 |
| ascdsver | 7.6.10 |
| caldbver | 3.4.0 |
| date | 2007-05-27T16:42:50 |
| revision | 3 |

| | |
|----------------|-----------------|
| sched_exp_time | 2500.000000 |
| ontime | 2892.5999952108 |
| ontime2 | 2892.5999952108 |
| ontime3 | 2892.5999952108 |
| ontime5 | 2892.5999952108 |
| ontime6 | 2892.5999952108 |
| ontime7 | 2892.5999952108 |
| ontime8 | 2892.5999952108 |
| l1events | 74346 |

2.1.4 Events

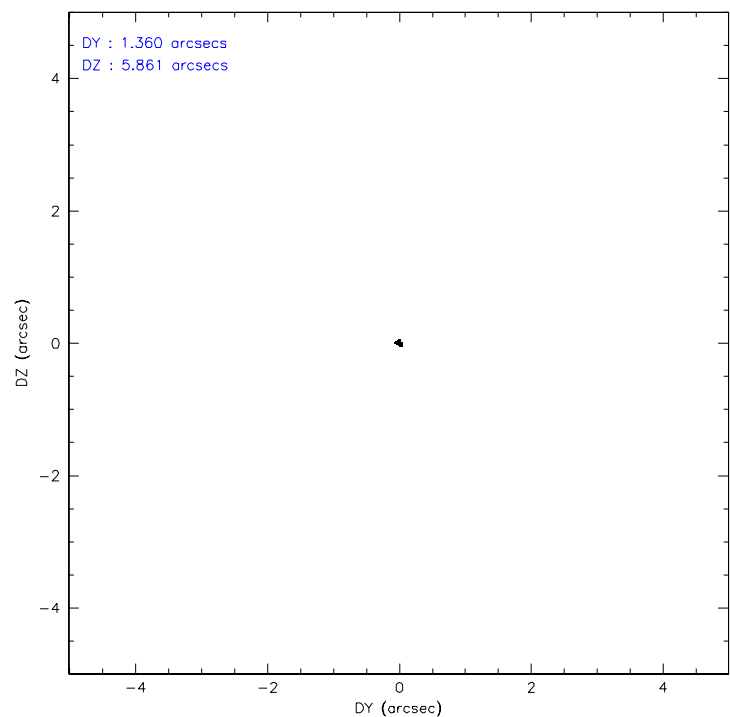
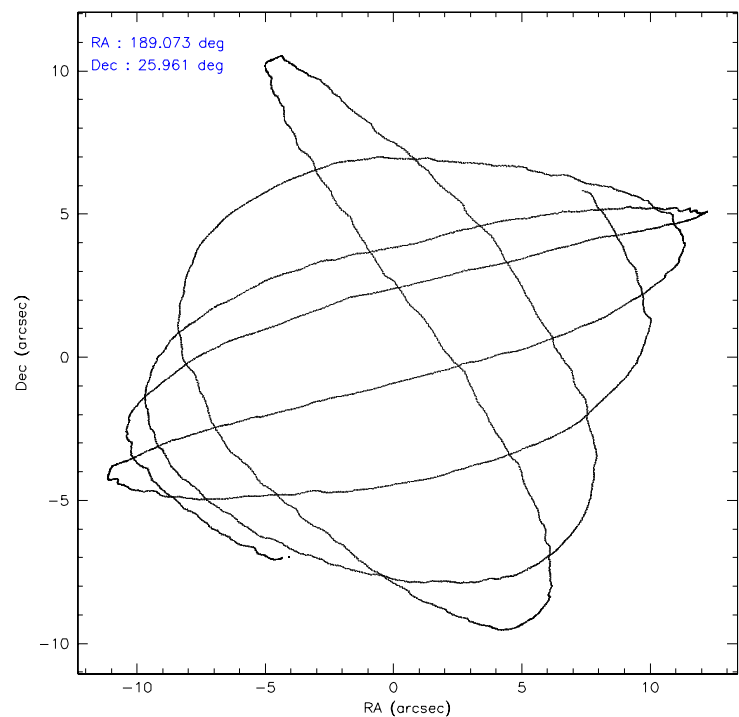
| | ccd 2 | ccd 3 | ccd 5 | ccd 6 | ccd 7 | ccd 8 |
|-----------------|-------|-------|-------|-------|-------|-------|
| level 1 events | 11111 | 10450 | 15417 | 10491 | 12183 | 14694 |
| rejected events | 9945 | 9282 | 7022 | 9231 | 6469 | 12278 |
| rejected % | 89% | 88% | 45% | 87% | 53% | 83% |

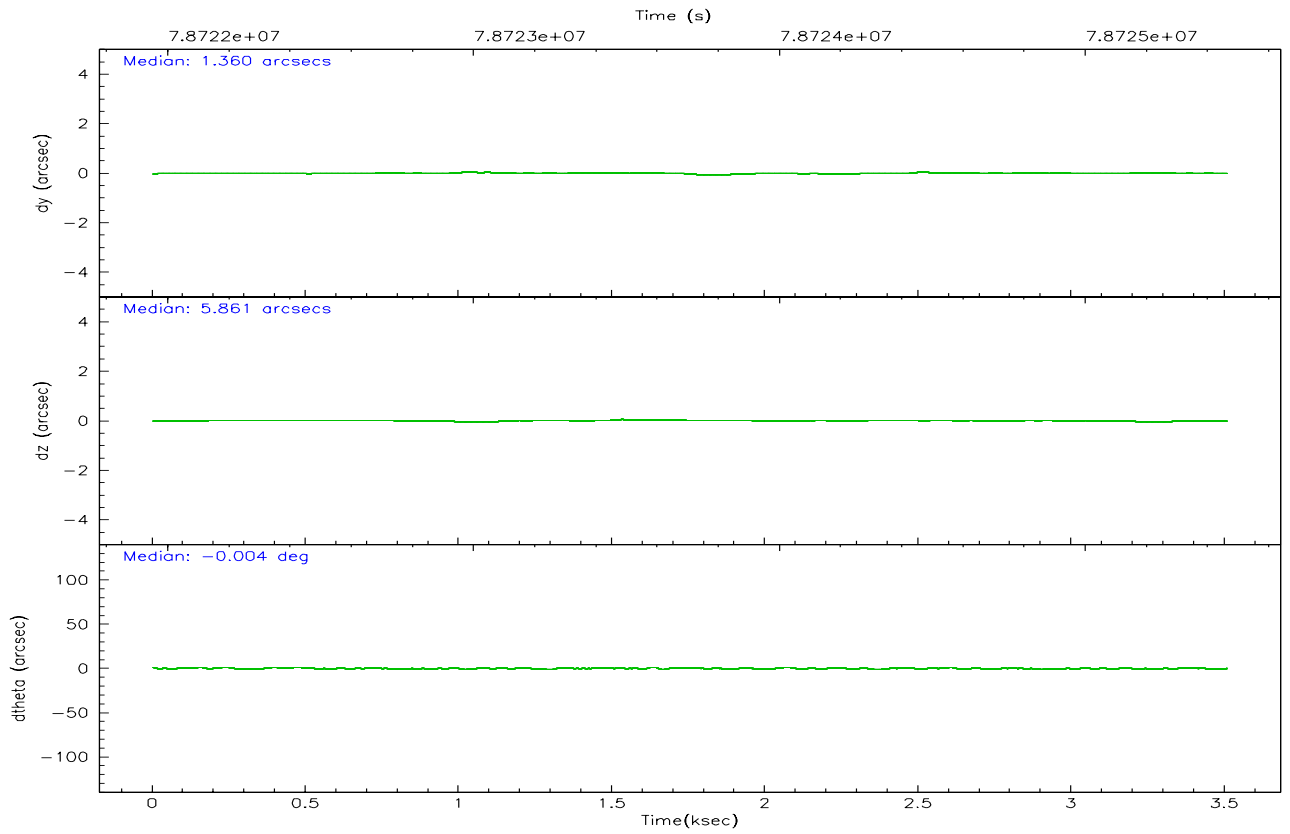
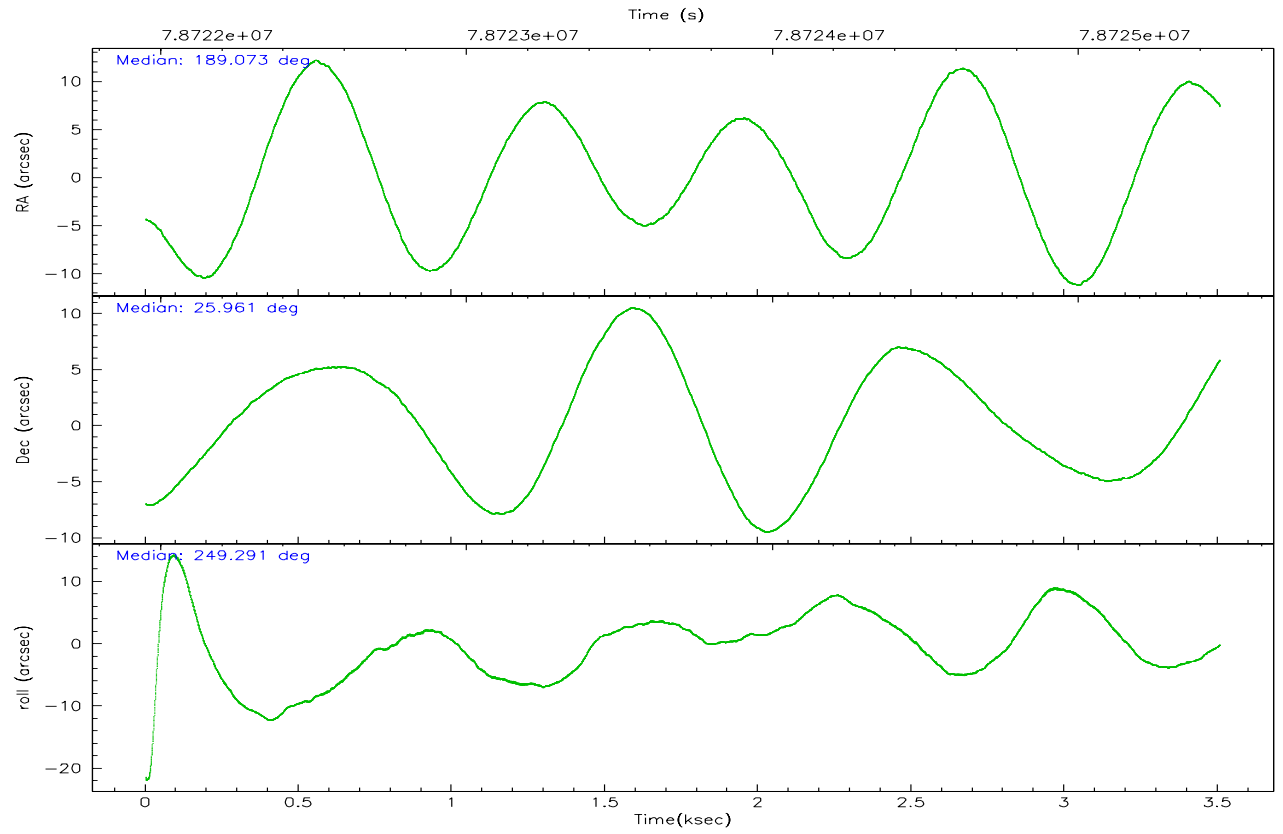
| | ccd 2 | ccd 3 | ccd 5 | ccd 6 | ccd 7 | ccd 8 |
|----------------|-------|-------|-------|-------|-------|-------|
| grade 0 events | 486 | 458 | 2837 | 514 | 802 | 769 |
| | 4% | 4% | 18% | 4% | 6% | 5% |
| grade 1 events | 2 | 1 | 106 | 2 | 12 | 5 |
| | 0% | 0% | 0% | 0% | 0% | 0% |
| grade 2 events | 230 | 237 | 1858 | 254 | 1176 | 526 |
| | 2% | 2% | 12% | 2% | 9% | 3% |
| grade 3 events | 149 | 145 | 373 | 163 | 579 | 287 |
| | 1% | 1% | 2% | 1% | 4% | 1% |
| grade 4 events | 130 | 125 | 311 | 126 | 562 | 268 |
| | 1% | 1% | 2% | 1% | 4% | 1% |
| grade 5 events | 292 | 293 | 1022 | 339 | 1063 | 502 |
| | 2% | 2% | 6% | 3% | 8% | 3% |
| grade 6 events | 171 | 205 | 3017 | 203 | 2598 | 566 |
| | 1% | 1% | 19% | 1% | 21% | 3% |
| grade 7 events | 9651 | 8986 | 5893 | 8890 | 5391 | 11771 |
| | 86% | 85% | 38% | 84% | 44% | 80% |

2.2 Compared Parameters

| Parameter | Planned | Actual | Parameter | Planned | Actual |
|-----------------------------------|---------------------|----------------------|---------------------------------------|-----------|---------|
| Instrument | ACIS | ACIS | Obspar format version number | 6 | 6 |
| Detector | ACIS-235678 | ACIS-235678 | Obspar file type | PREDICTED | ACTUAL |
| Grating | NONE | NONE | Obspar update status | NONE | UPDATED |
| Data mode | FAINT | FAINT | Number of optional ACIS chips dropped | 0 | 0 |
| Observation mode | POINTING | POINTING | On-chip summing requested | N | N |
| Pointing RA | 189.067719 | 189.0727263940111 | Subarray requested | CUSTOM | 1/2 |
| Pointing Dec | 25.988069 | 25.96094191944225 | Subarray start row | 255 | 255 |
| Pointing Roll | 249.135615 | 249.28990160388 | Subarray row count | 512 | 512 |
| SIM focus pos (mm) | -0.684267 | -0.6828225247311905 | Alternating exposures requested | N | N |
| SIM defocus (mm) | 0 | 0.001444936568705701 | Primary exposure time | 0.000000 | 1.8 |
| SIM translation stage pos (mm) | -190.132523 | -190.1425803651734 | | | |
| SIM translation stage offset (mm) | 0 | 0.01005778216563158 | | | |
| Observation start time | 78722963.184000 | 78721593.986977 | | | |
| Observation start date | 2000-06-30T03:28:19 | 2000-06-30T03:06:33 | | | |
| Observation end time | 78725463.184000 | 78726326.924652 | | | |
| Observation end date | 2000-06-30T04:09:59 | 2000-06-30T04:25:26 | | | |
| Read mode | TIMED | TIMED | | | |

2.3 Aspect



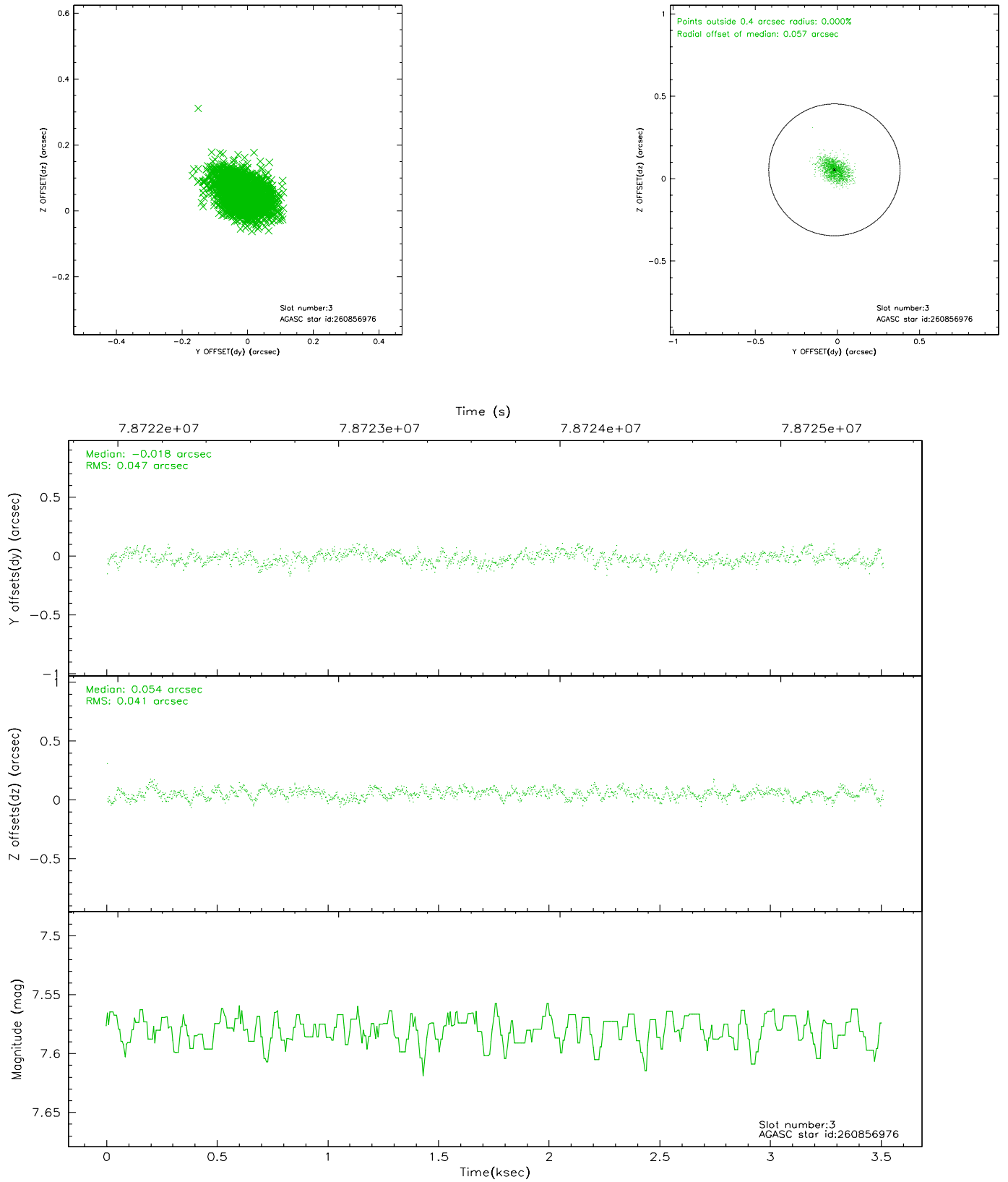


Slot Statistics

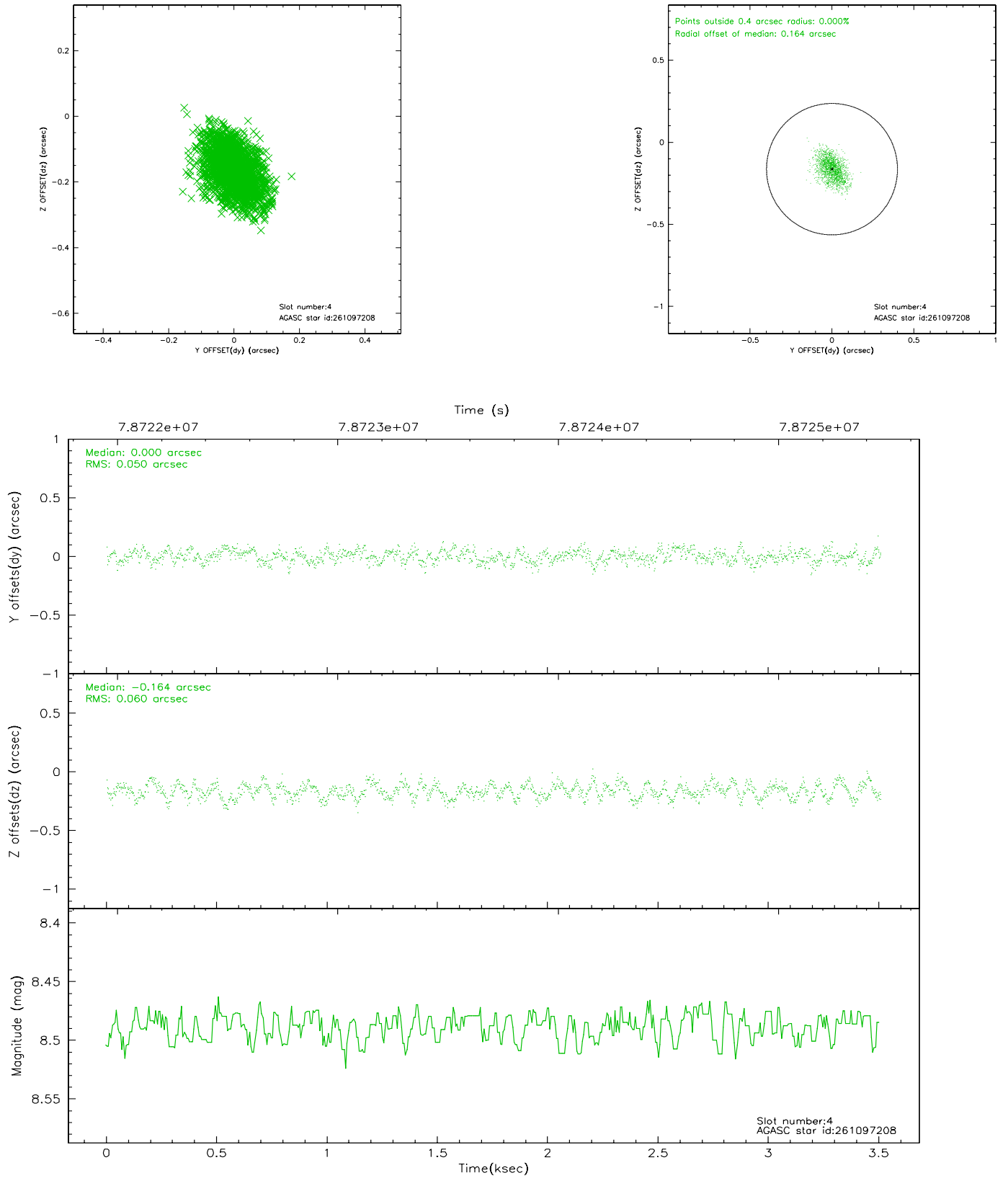
| slot | status | id | mag | n_pts | med_dy | med_dz | dr1 | dr2 | ra | dec | mean_y | mean_z |
|------|--------|-----------|-------|-------|--------|--------|-------|-------|------------|-----------|----------|----------|
| 0 | FID | ACIS-S-2 | 7.11 | 856 | -0.025 | 0.035 | 0.006 | 0.011 | 0.000000 | 0.000000 | -753.97 | -1726.91 |
| 1 | FID | ACIS-S-4 | 7.21 | 856 | -0.056 | 0.003 | 0.005 | 0.008 | 0.000000 | 0.000000 | 2158.46 | 179.69 |
| 2 | FID | ACIS-S-5 | 7.23 | 856 | 0.050 | -0.029 | 0.005 | 0.010 | 0.000000 | 0.000000 | -1804.42 | 175.37 |
| 3 | GUIDE | 260856976 | 7.58 | 1712 | -0.018 | 0.054 | 0.066 | 0.108 | 189.008015 | 25.423610 | 1967.81 | 542.60 |
| 4 | GUIDE | 261097208 | 8.49 | 1711 | 0.000 | -0.164 | 0.084 | 0.136 | 188.588563 | 26.289040 | -463.23 | -1831.65 |
| 5 | GUIDE | 260853184 | 9.18 | 1711 | 0.015 | 0.068 | 0.076 | 0.128 | 189.165500 | 25.791548 | 547.78 | 547.32 |
| 6 | GUIDE | 260846952 | 9.84 | 1709 | 0.136 | -0.100 | 0.095 | 0.161 | 189.003435 | 25.755336 | 857.47 | 104.05 |
| 7 | GUIDE | 261096504 | 10.07 | 1711 | -0.134 | 0.141 | 0.120 | 0.191 | 189.562259 | 26.357811 | -1814.53 | 1015.95 |

2.4 Star Slots

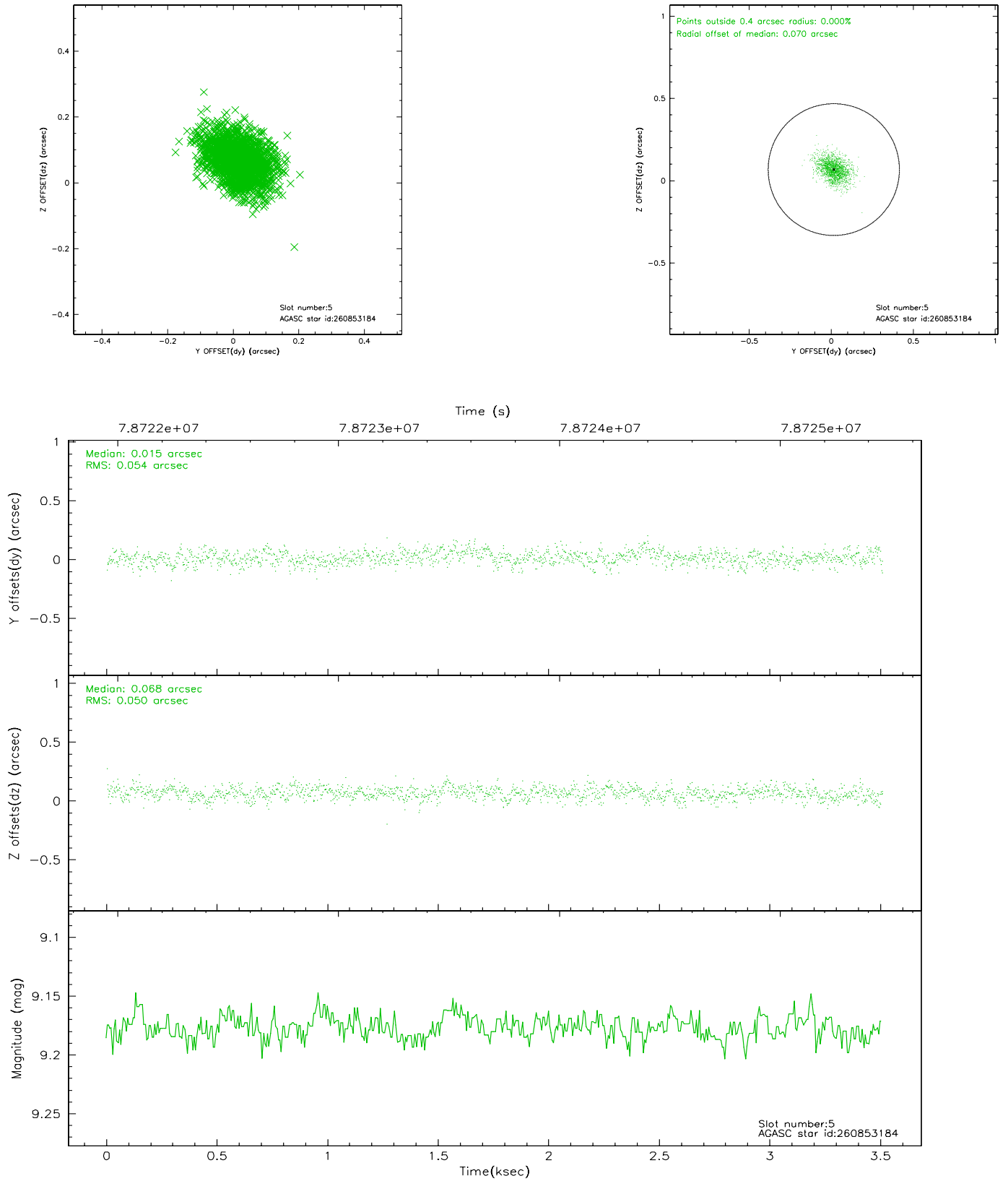
2.4.1 Slot 3



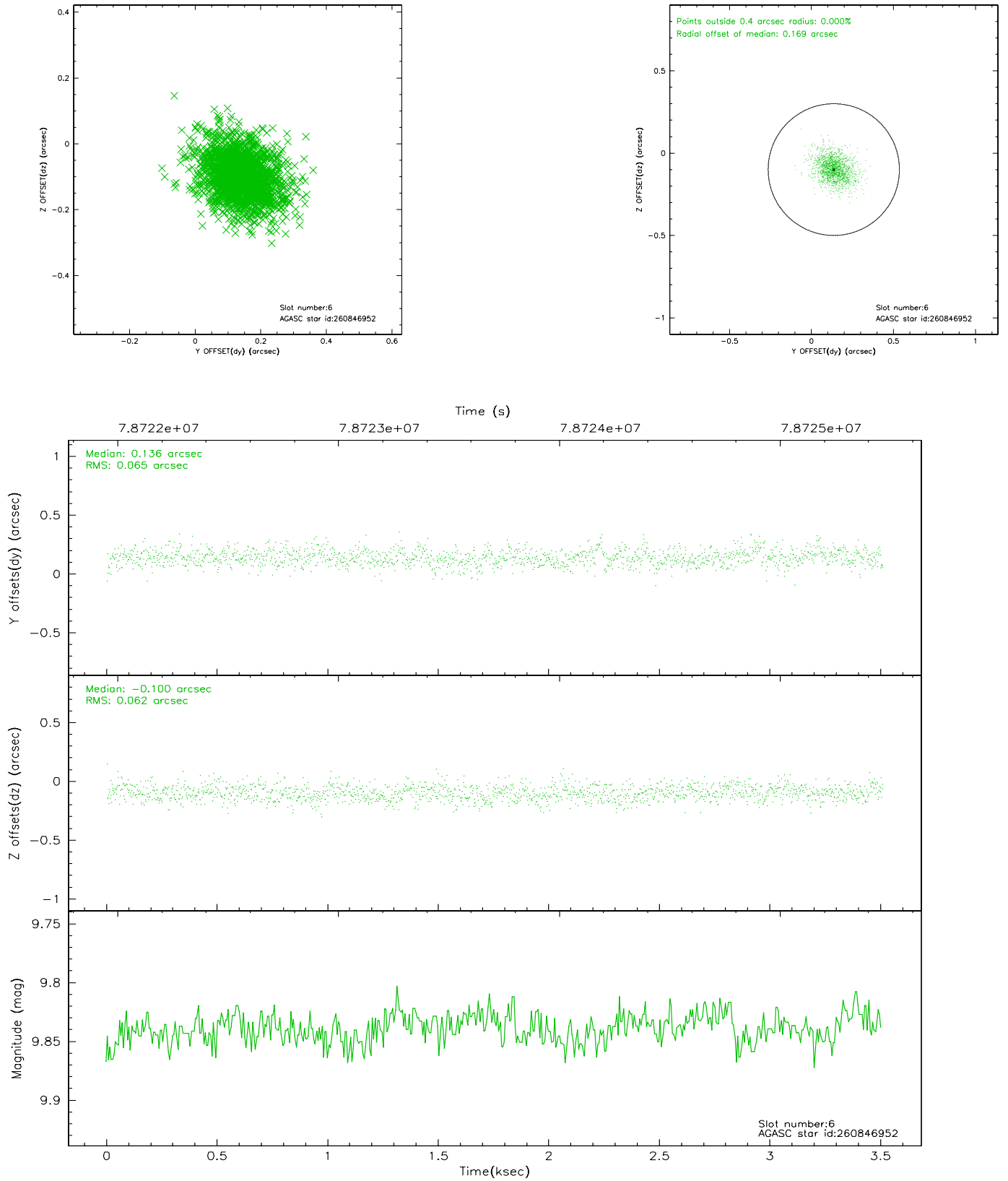
2.4.2 Slot 4



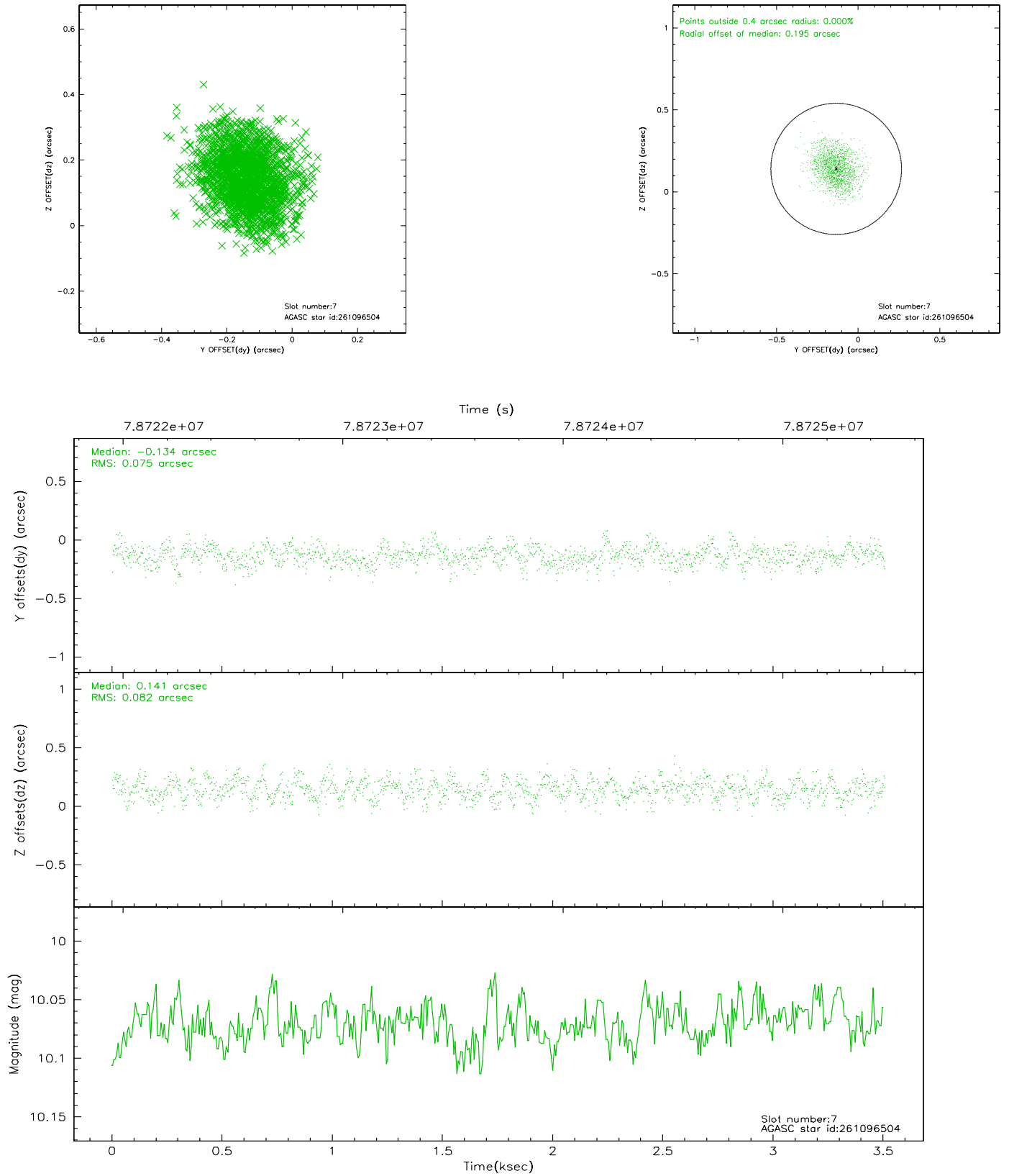
2.4.3 Slot 5



2.4.4 Slot 6

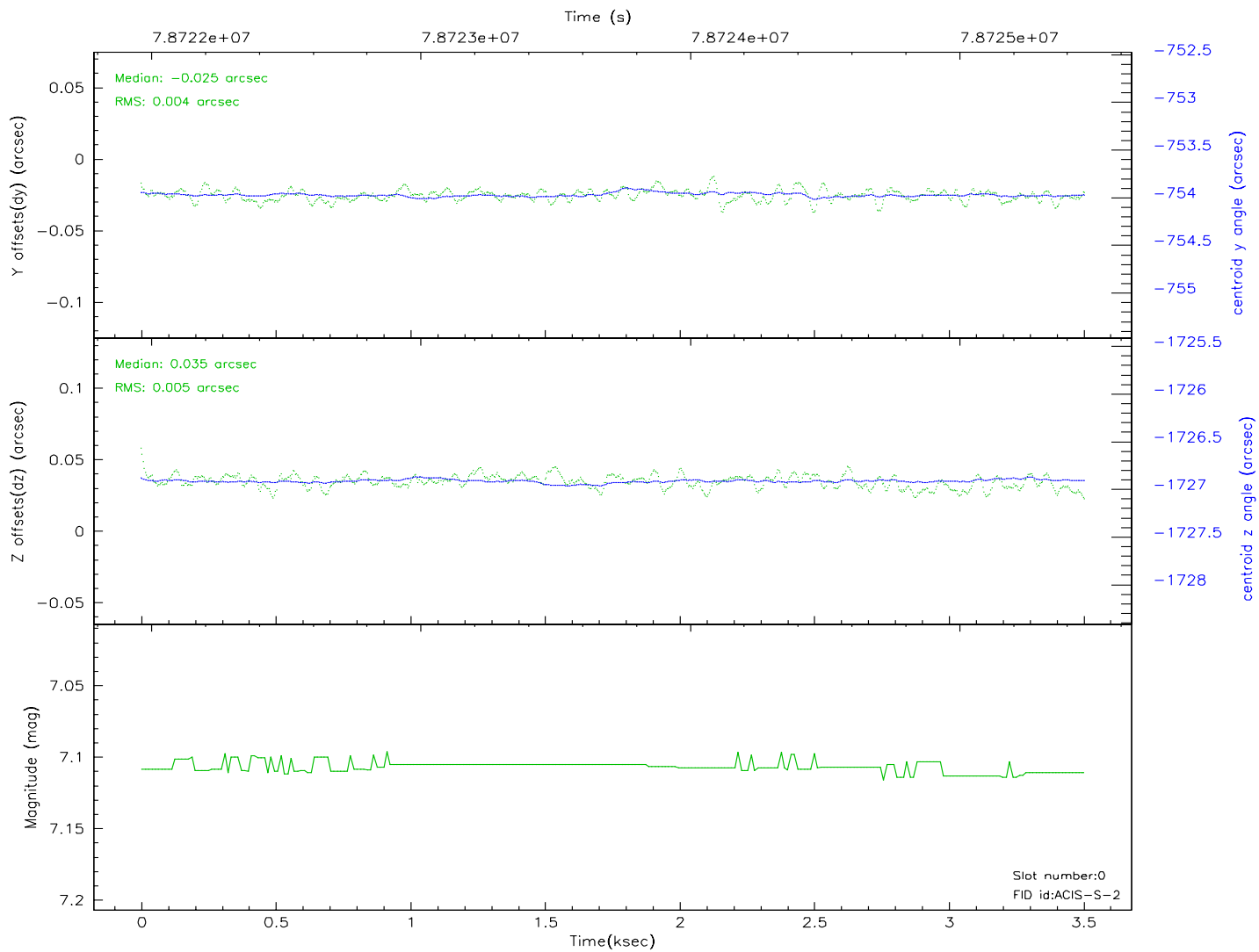
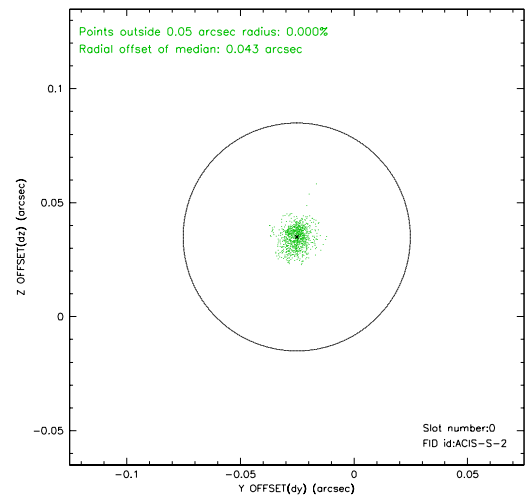
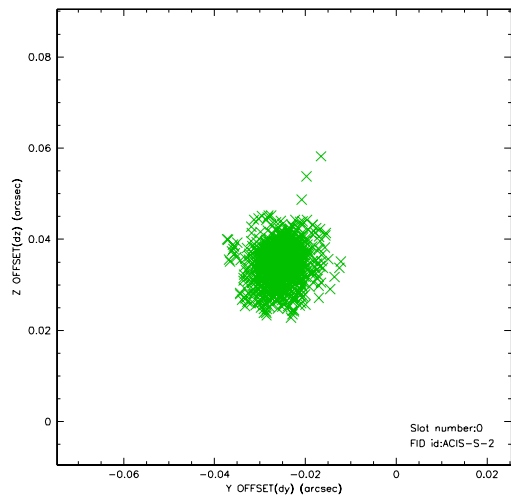


2.4.5 Slot 7

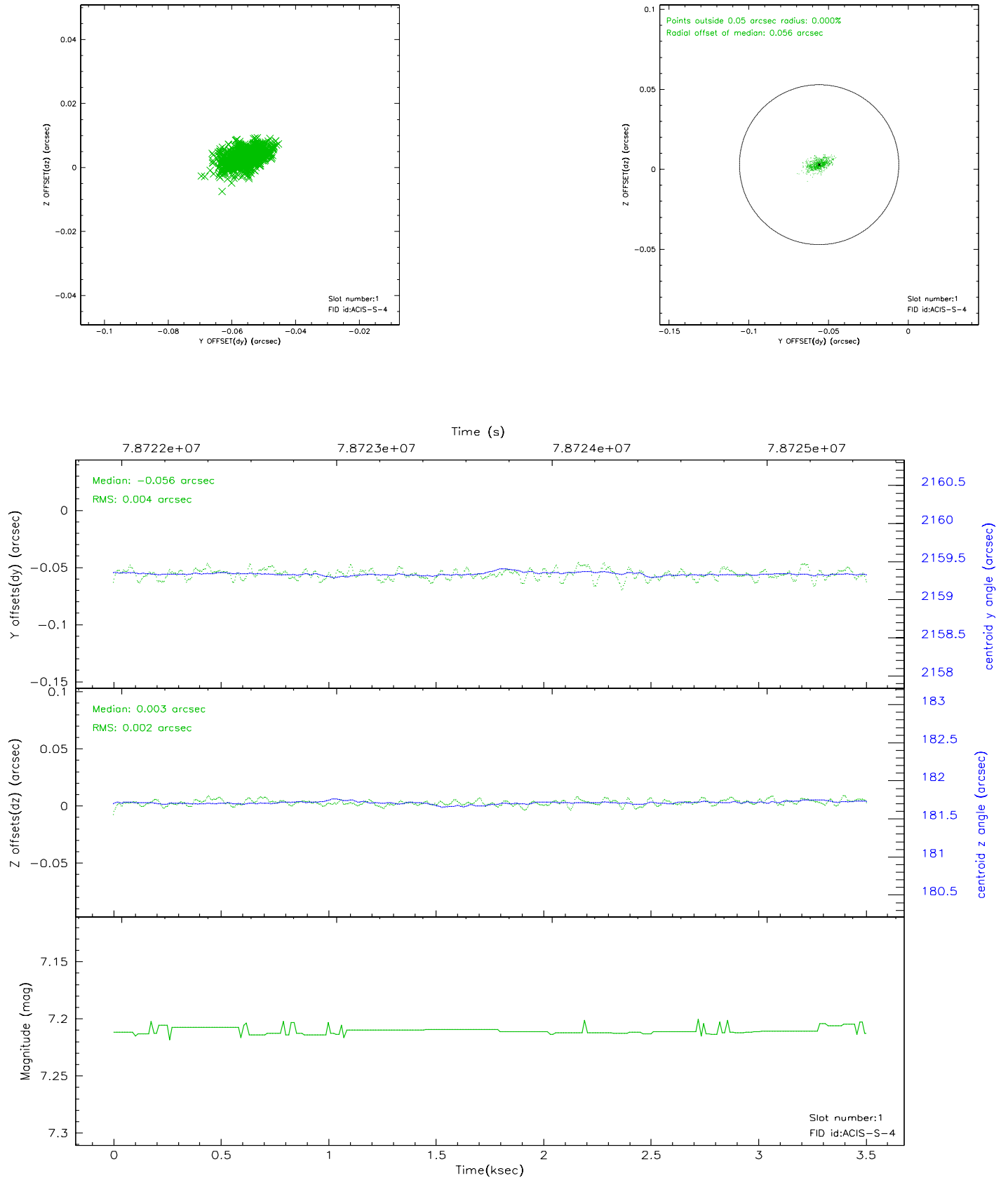


2.5 FID Slots

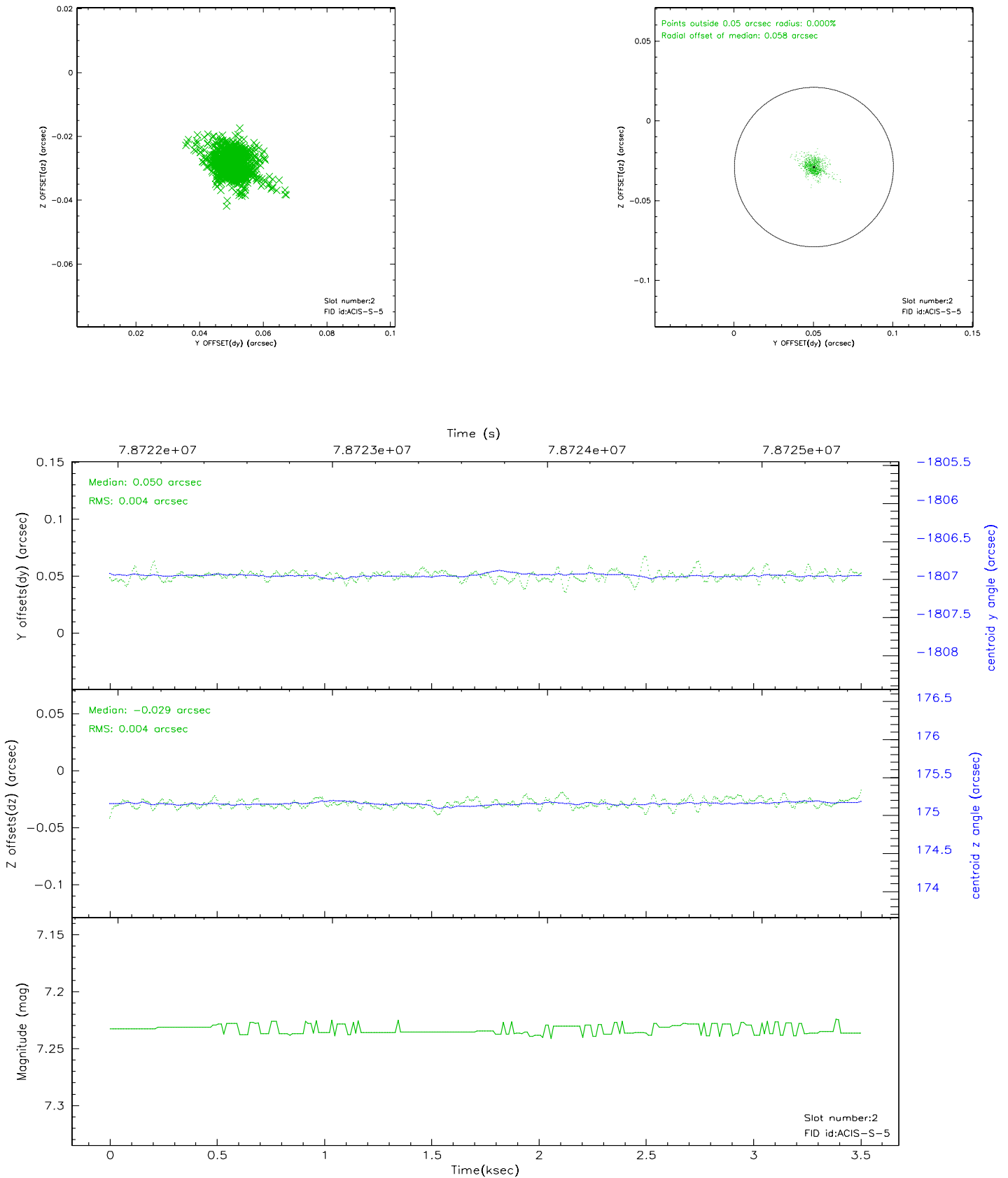
2.5.1 Slot 0



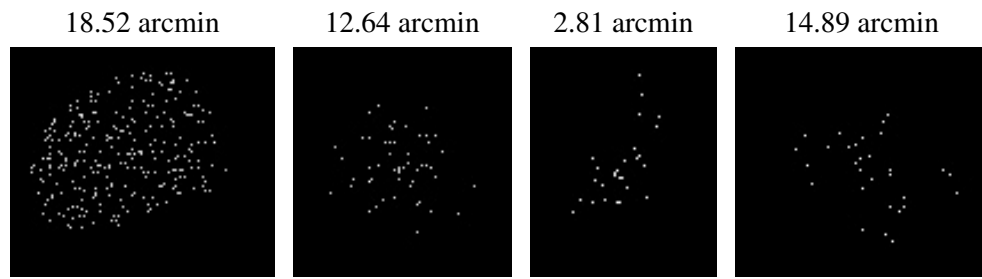
2.5.2 Slot 1



2.5.3 Slot 2



3 Point Sources



A Summary

A.1 Status

| | |
|----------------------------|------------|
| V&V Scientist | Jen Lauer |
| V&V Date (YYYY-MM-DD) | 2007.05.27 |
| V&V Edition | 1 |
| V&V Disposition and Status | OK |
| V&V Charge Time | 2.896 |

A.2 Comments

Window constraint met.