

V&V Reference Report

L2 ASCDS Version : 8.2.1

Observation 386 - L2 Version 3

Chandra X-Ray Center

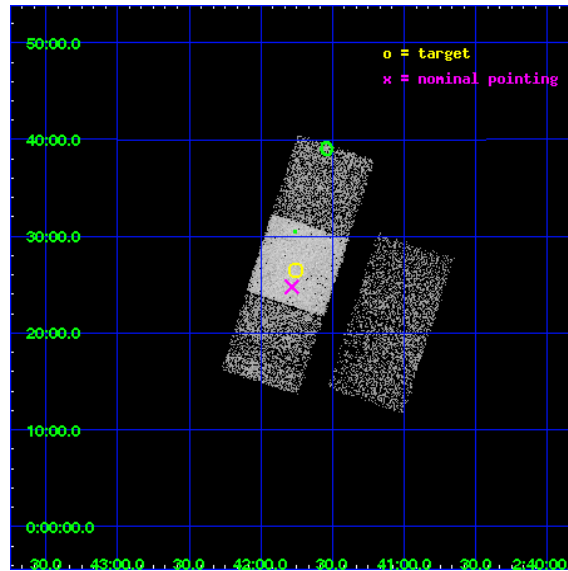
L2 Processing Date : Jan 29 2010

Contents

1	Front	2
2	OBI	3
2.1	OBI	3
2.1.1	Images	3
2.1.2	Bias	3
2.1.3	Parameters	4
2.1.4	Events	4
2.2	Compared Parameters	5
2.3	Aspect	6
2.4	Star Slots	9
2.4.1	Slot 3	9
2.4.2	Slot 4	10
2.4.3	Slot 5	11
2.4.4	Slot 6	12
2.4.5	Slot 7	13
2.5	FID Slots	14
2.5.1	Slot 0	14
2.5.2	Slot 1	15
2.5.3	Slot 2	16
3	Point Sources	17
A	Summary	18
A.1	Status	18
A.2	Comments	18

1 Front

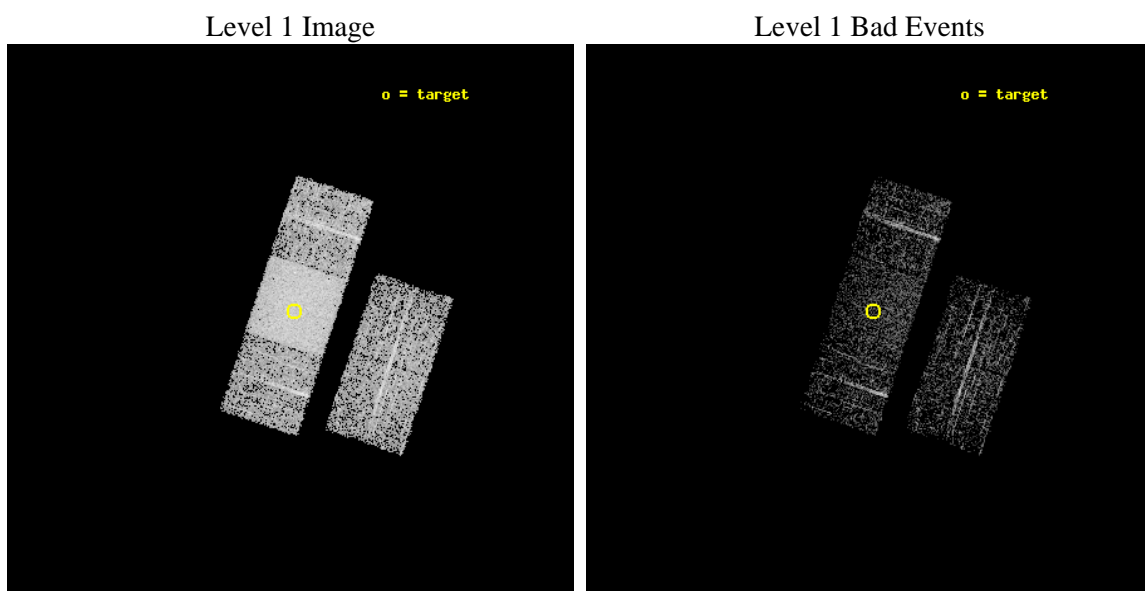
seq_num	700058	Sequence number
obs_id	386	Observation id
title	LOW-LUMINOSITY ACTIVE GALACTIC NUCLEI IN NEARBY GALAXIES	Proposal
observer	Prof Gordon Garmire	Principal investigator
object	NGC 1055	Source name
dtcycle	0	
cycle	P	events from which exps? Prim/Second/Both
ra_targ	40.438333	Observer's specified target RA
dec_targ	0.441667	Observer's specified target Dec
ra_nom	40.445829074274	Nominal RA
dec_nom	0.41296121212435	Nominal Dec
roll_nom	288.3197631886	Nominal Roll
revision	3	Processing version of data
ontime	1148.8000010699	Sum of GTIs [s]
livetime	1134.253203732	Livetime [s]
ontime2	1148.8000010699	Sum of GTIs [s]
ontime3	1148.8000010699	Sum of GTIs [s]
ontime6	1148.8000010699	Sum of GTIs [s]
ontime7	1148.8000010699	Sum of GTIs [s]
ontime8	1148.8000010699	Sum of GTIs [s]
l2events	30420	Number of level 2 events



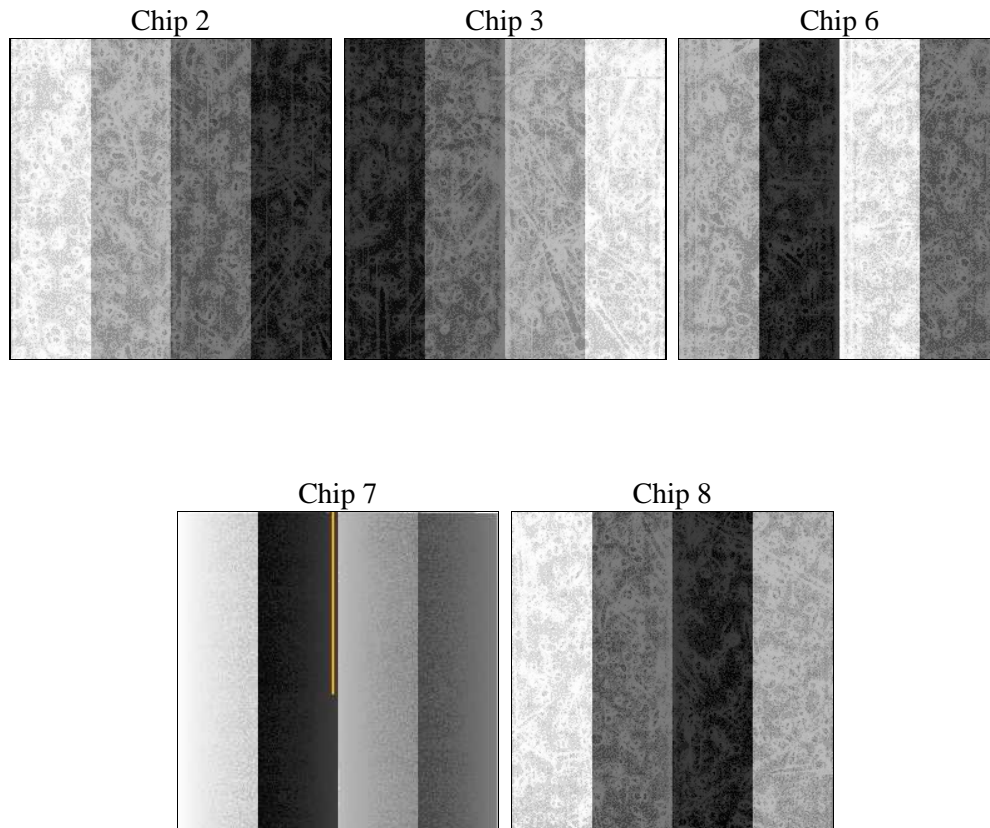
2 OBI

2.1 OBI

2.1.1 Images



2.1.2 Bias



2.1.3 Parameters

obi_num	0	Obi number	sched_exp_time	2000.000000	Scheduled observation exposure time
ascdsver	8.2.1	ASCDS version number	ontime	1148.8000010699	Sum of GTIs [s]
caldbver	4.1.5	 	ontime2	1148.8000010699	Sum of GTIs [s]
date	2010-01-29T20:23:39	Date and time of file creation	ontime3	1148.8000010699	Sum of GTIs [s]
revision	3	Processing version of data	ontime6	1148.8000010699	Sum of GTIs [s]
			ontime7	1148.8000010699	Sum of GTIs [s]
			ontime8	1148.8000010699	Sum of GTIs [s]
			l1events	77506	Number of level 1 events

2.1.4 Events

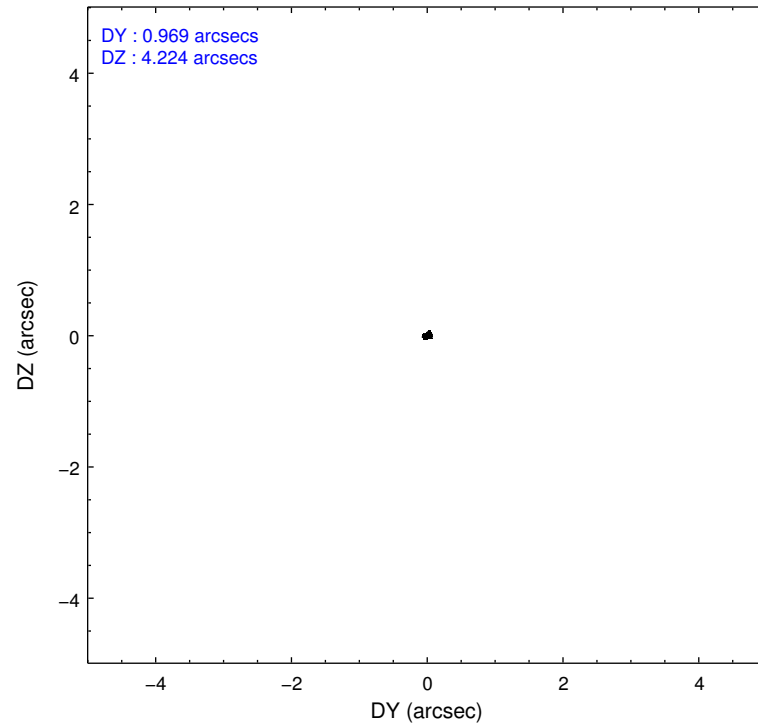
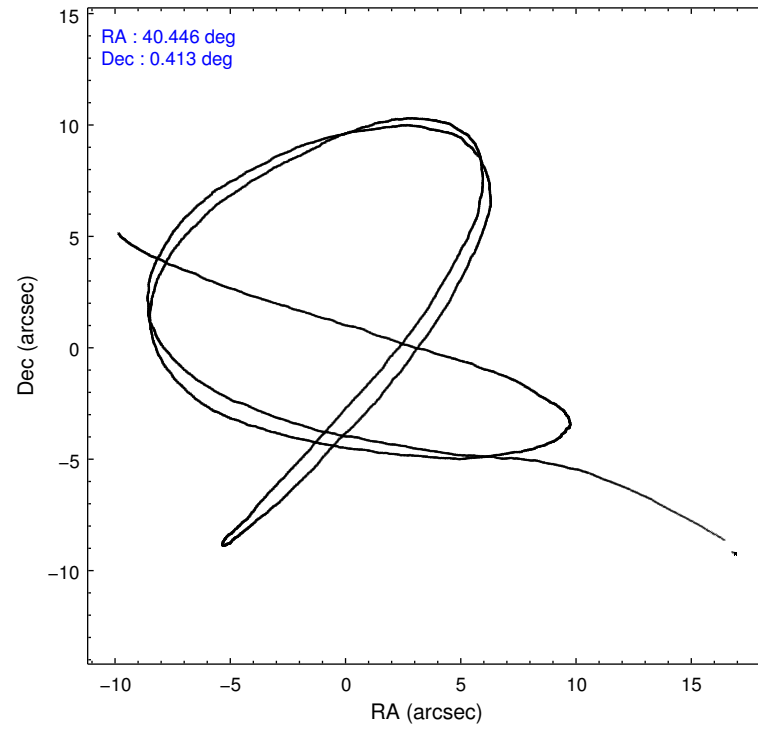
	ccd 2	ccd 3	ccd 6	ccd 7	ccd 8
level 1 events	11239	10973	11913	28641	14740
rejected events	9151	8818	8372	8996	9739
rejected %	81%	80%	70%	31%	66%

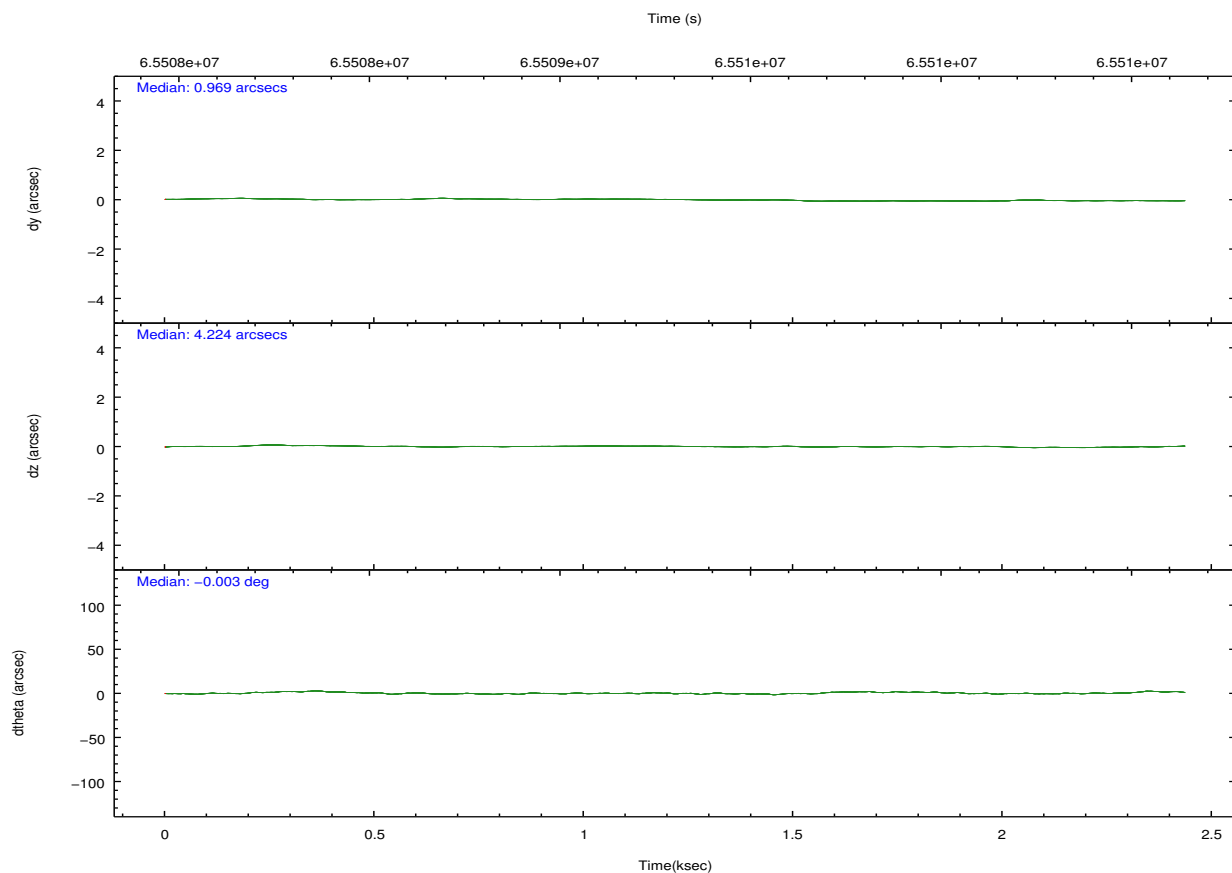
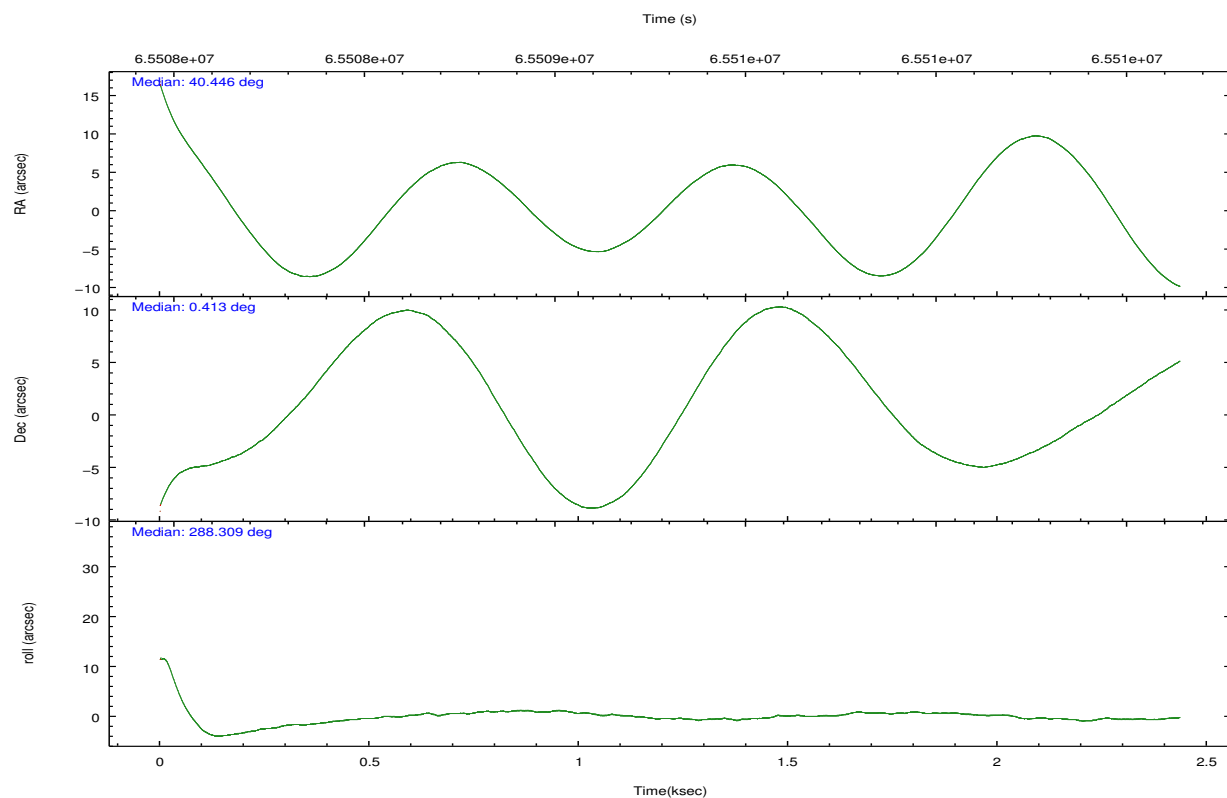
	ccd 2	ccd 3	ccd 6	ccd 7	ccd 8
grade 0 events	571	575	1060	1730	1586
	5%	5%	8%	6%	10%
grade 1 events	2	3	1	8	8
	0%	0%	0%	0%	0%
grade 2 events	1135	1180	2026	3495	2181
	10%	10%	17%	12%	14%
grade 3 events	64	62	71	1159	253
	0%	0%	0%	4%	1%
grade 4 events	75	65	54	1091	259
	0%	0%	0%	3%	1%
grade 5 events	179	191	193	739	285
	1%	1%	1%	2%	1%
grade 6 events	251	280	335	12178	728
	2%	2%	2%	42%	4%
grade 7 events	8962	8617	8173	8241	9440
	79%	78%	68%	28%	64%

2.2 Compared Parameters

Parameter	Planned	Actual	Parameter	Planned	Actual
Instrument	ACIS	ACIS	Obspar format version number	6	6
Detector	ACIS-23678	ACIS-23678	Obspar file type	PREDICTED	ACTUAL
Grating	NONE	NONE	Obspar update status	NONE	UPDATED
Data mode	FAINT	FAINT	Number of optional ACIS chips dropped	0	0
Observation mode	POINTING	POINTING	On-chip summing requested	N	N
Pointing RA	40.425209	40.44582907427416	Subarray requested	NONE	NONE
Pointing Dec	0.431395	0.4129612121243511	Alternating exposures requested	N	N
Pointing Roll	288.163222	288.3197631885952	Primary exposure time	0.000000	3.2
SIM focus pos (mm)	-0.684267	-0.6828225247311905			
SIM defocus (mm)	0	0.001444936568705701			
SIM translation stage pos (mm)	-190.132523	-190.1400660498719			
SIM translation stage offset (mm)	0	0.00754346686406393			
Observation start time	65508522.184000	65507166.86133			
Observation start date	2000-01-29T04:47:38	2000-01-29T04:26:06			
Observation end time	65510522.184000	65511149.498975			
Observation end date	2000-01-29T05:20:58	2000-01-29T05:32:29			
Read mode	TIMED	TIMED			

2.3 Aspect



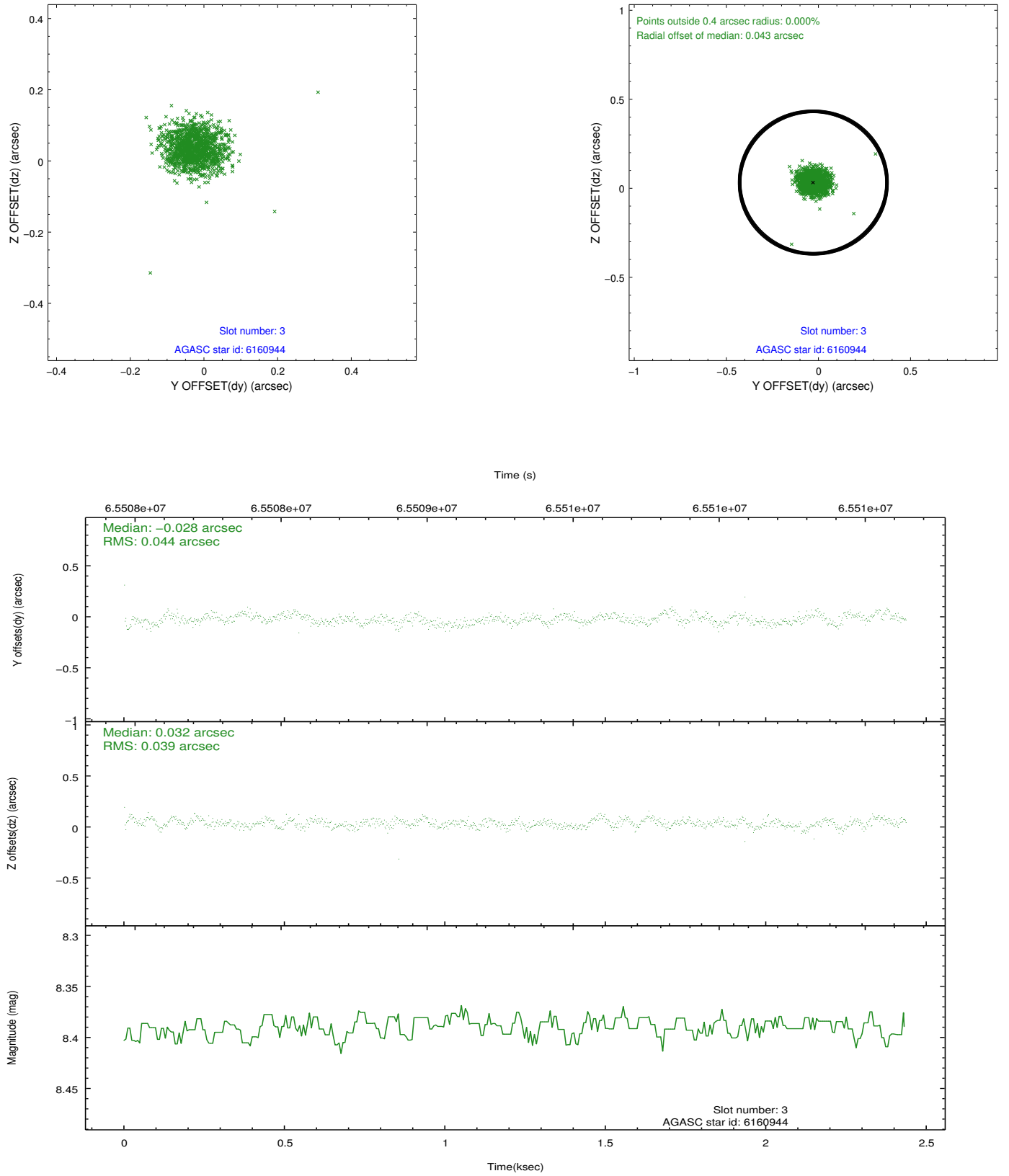


Slot Statistics

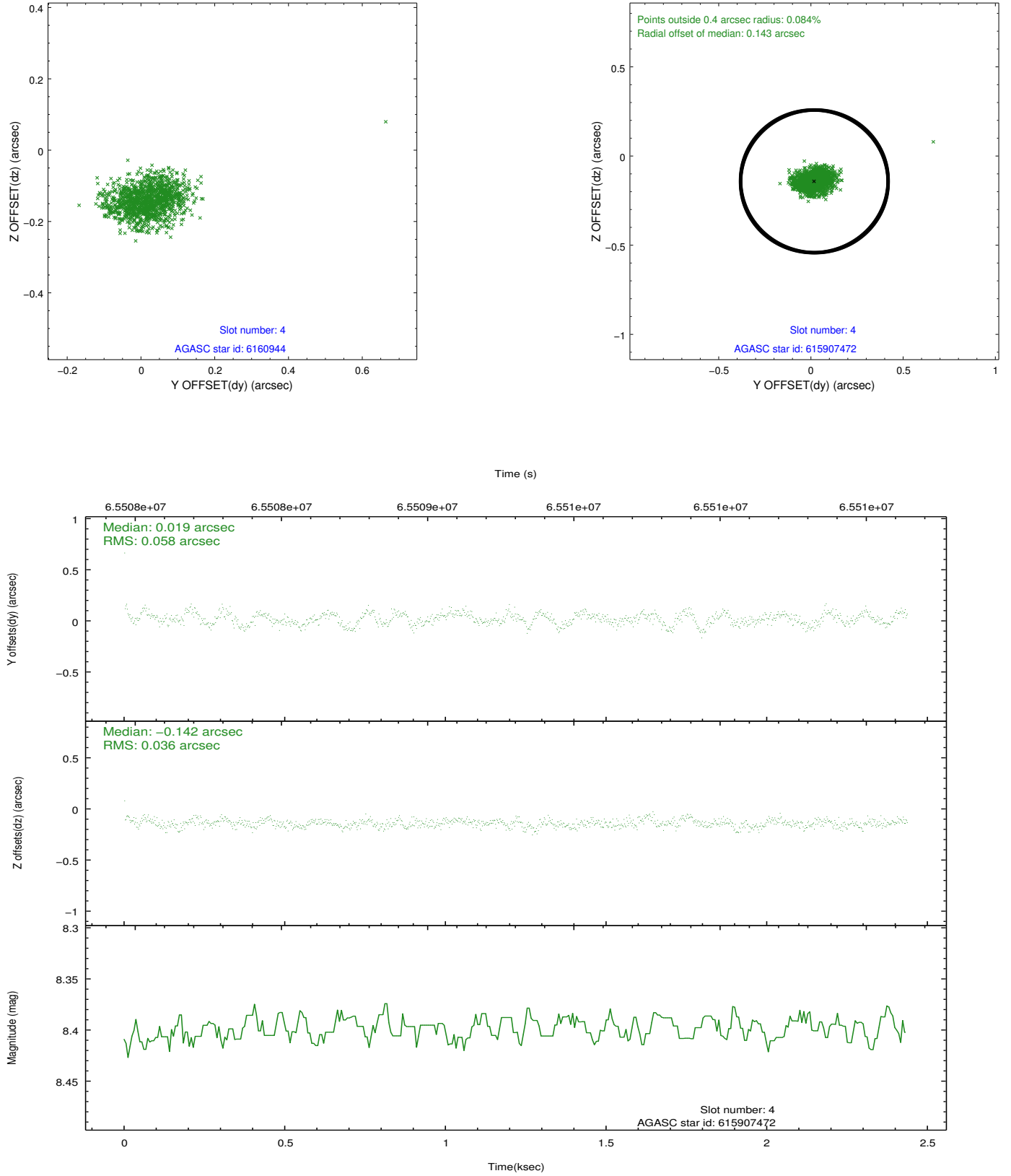
slot	status	id	mag	n_pts	med_dy	med_dz	dr1	dr2	ra	dec	mean_y	mean_z
0	FID	ACIS-S-2	7.11	595	-0.009	-0.008	0.008	0.014	0.000000	0.000000	-753.59	-1725.30
1	FID	ACIS-S-4	7.21	595	0.005	0.007	0.009	0.014	0.000000	0.000000	2158.54	180.39
2	FID	ACIS-S-5	7.23	594	-0.025	0.010	0.009	0.016	0.000000	0.000000	-1802.98	177.18
3	GUIDE	6160944	8.39	1189	-0.028	0.032	0.061	0.098	40.821496	0.087247	1621.86	969.58
4	GUIDE	615907472	8.40	1189	0.019	-0.142	0.070	0.113	40.049578	-0.266703	1968.35	-2067.48
5	GUIDE	6166048	8.06	1187	-0.185	-0.010	0.075	0.111	40.482066	0.525874	-257.79	298.56
6	GUIDE	6168976	9.54	1188	0.045	0.191	0.130	0.199	41.130427	0.375135	983.32	2349.63
7	GUIDE	615910960	9.63	1186	0.157	-0.071	0.092	0.153	40.339678	-0.092669	1697.95	-878.63

2.4 Star Slots

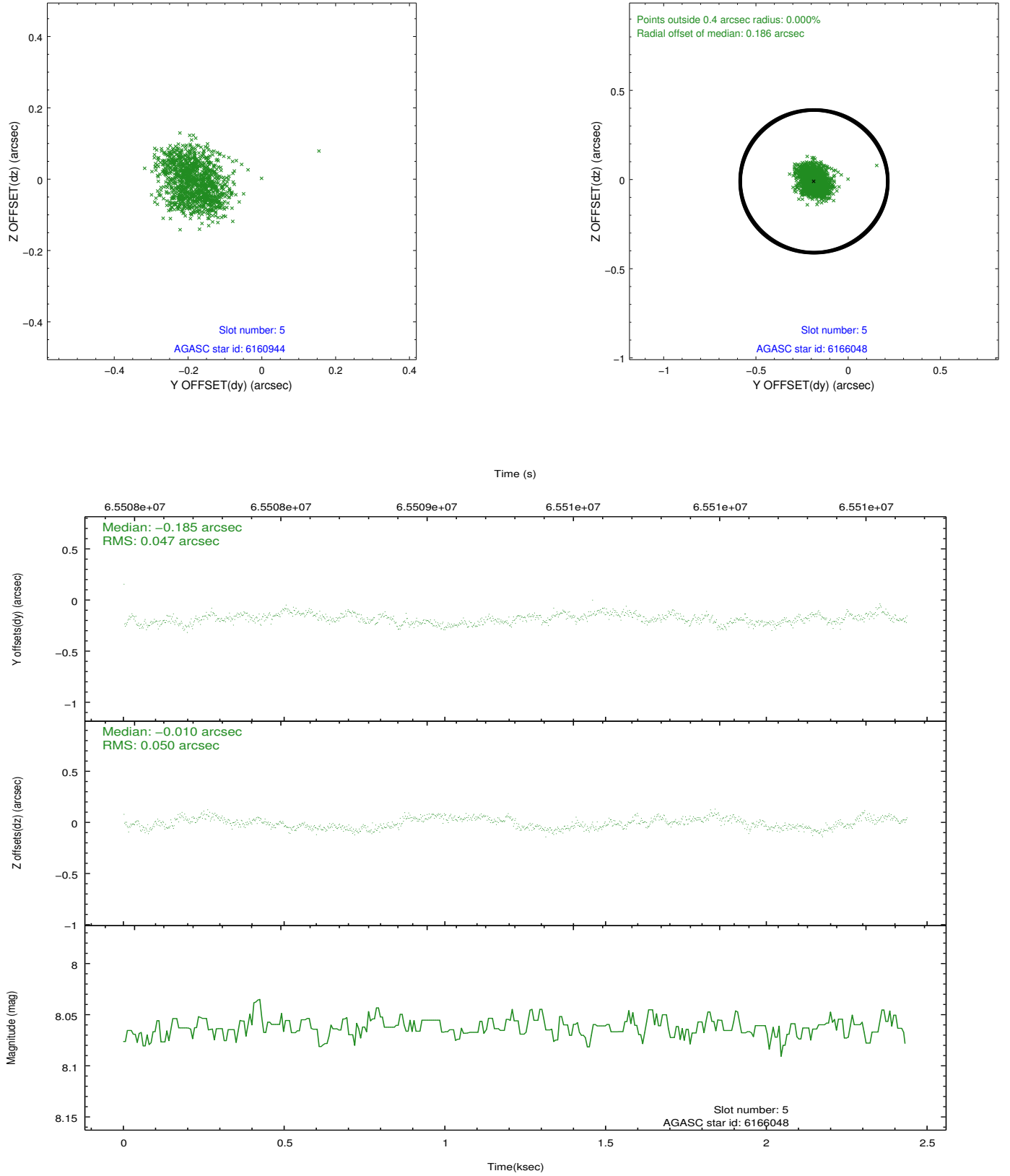
2.4.1 Slot 3



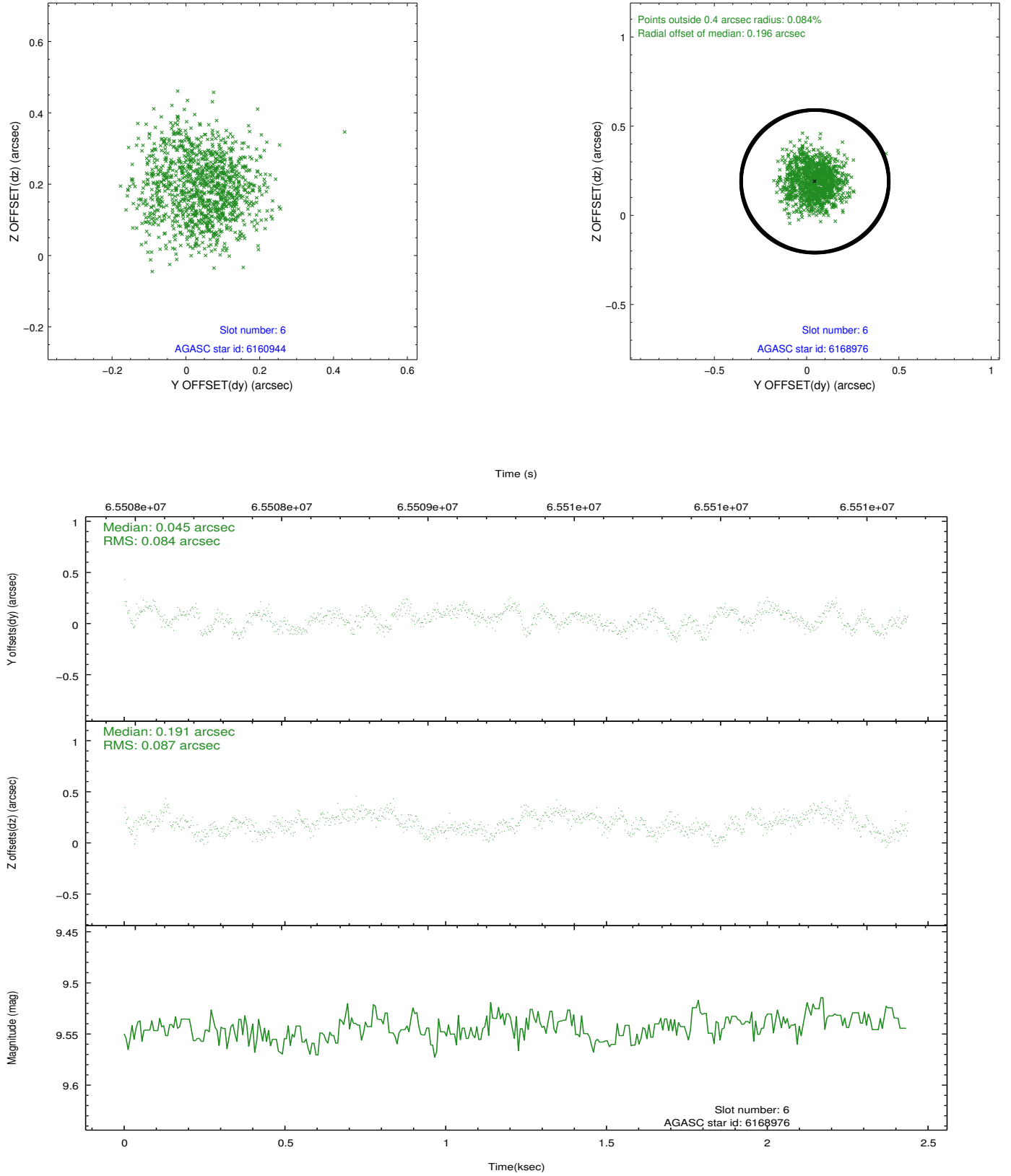
2.4.2 Slot 4



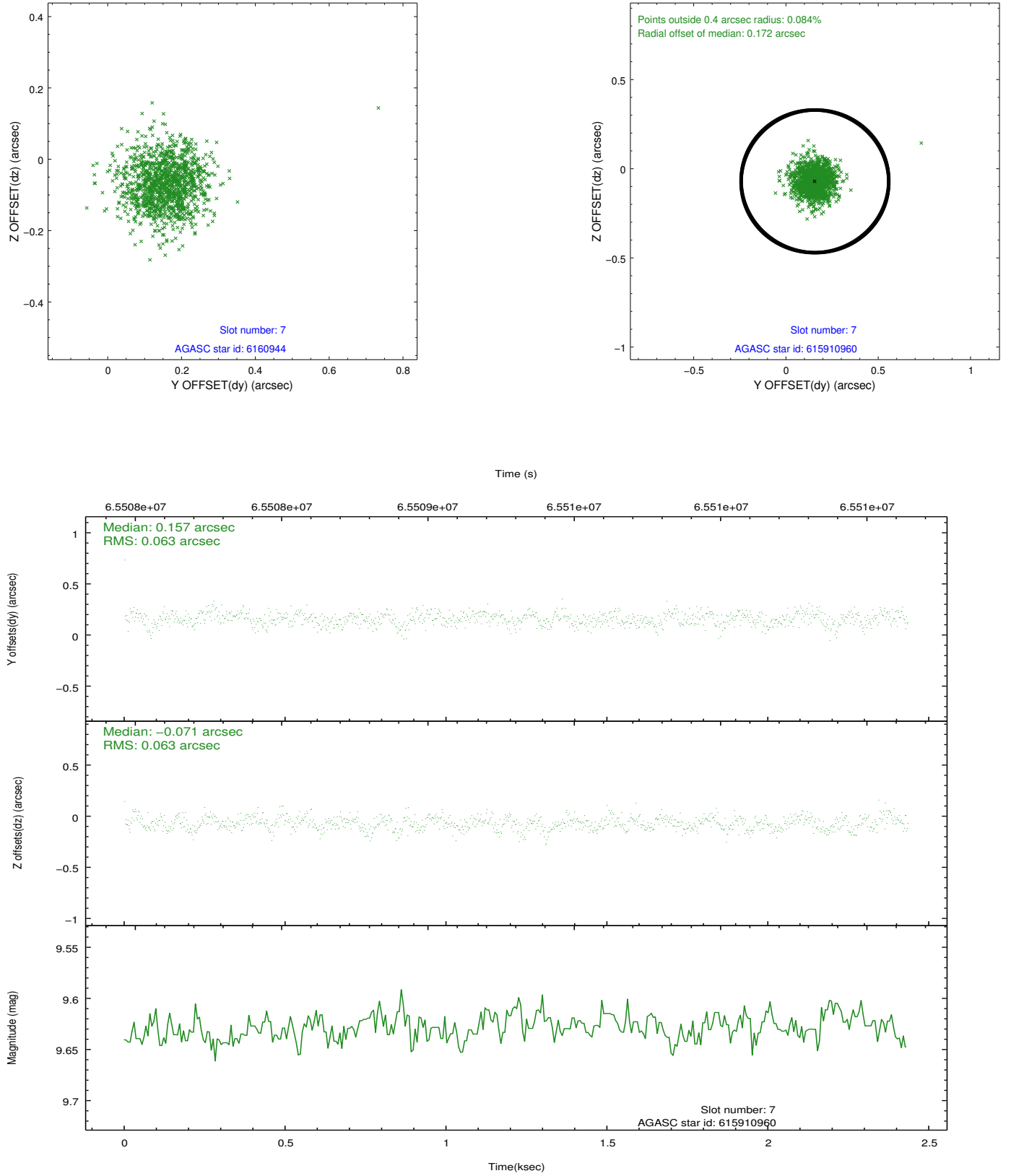
2.4.3 Slot 5



2.4.4 Slot 6

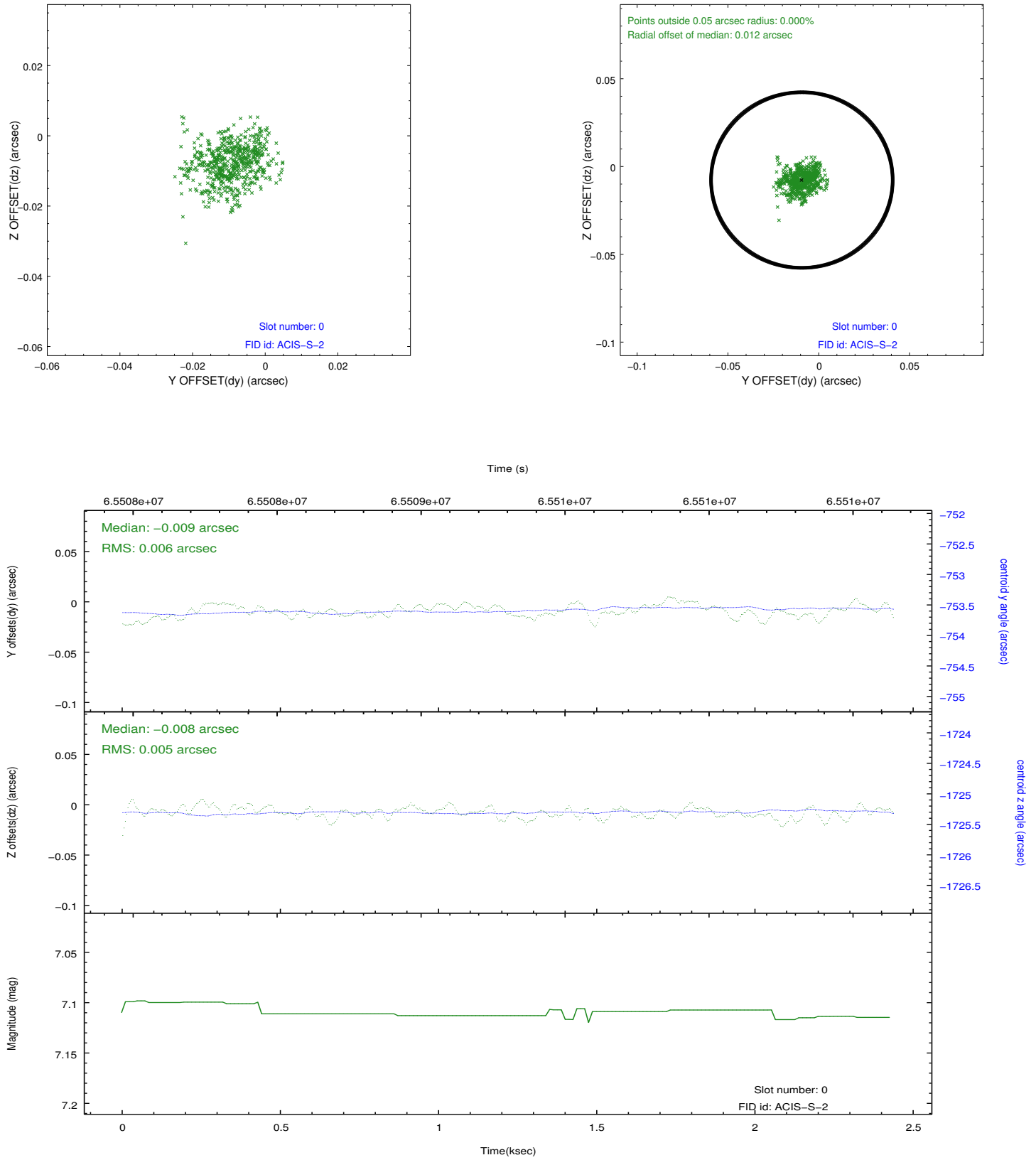


2.4.5 Slot 7

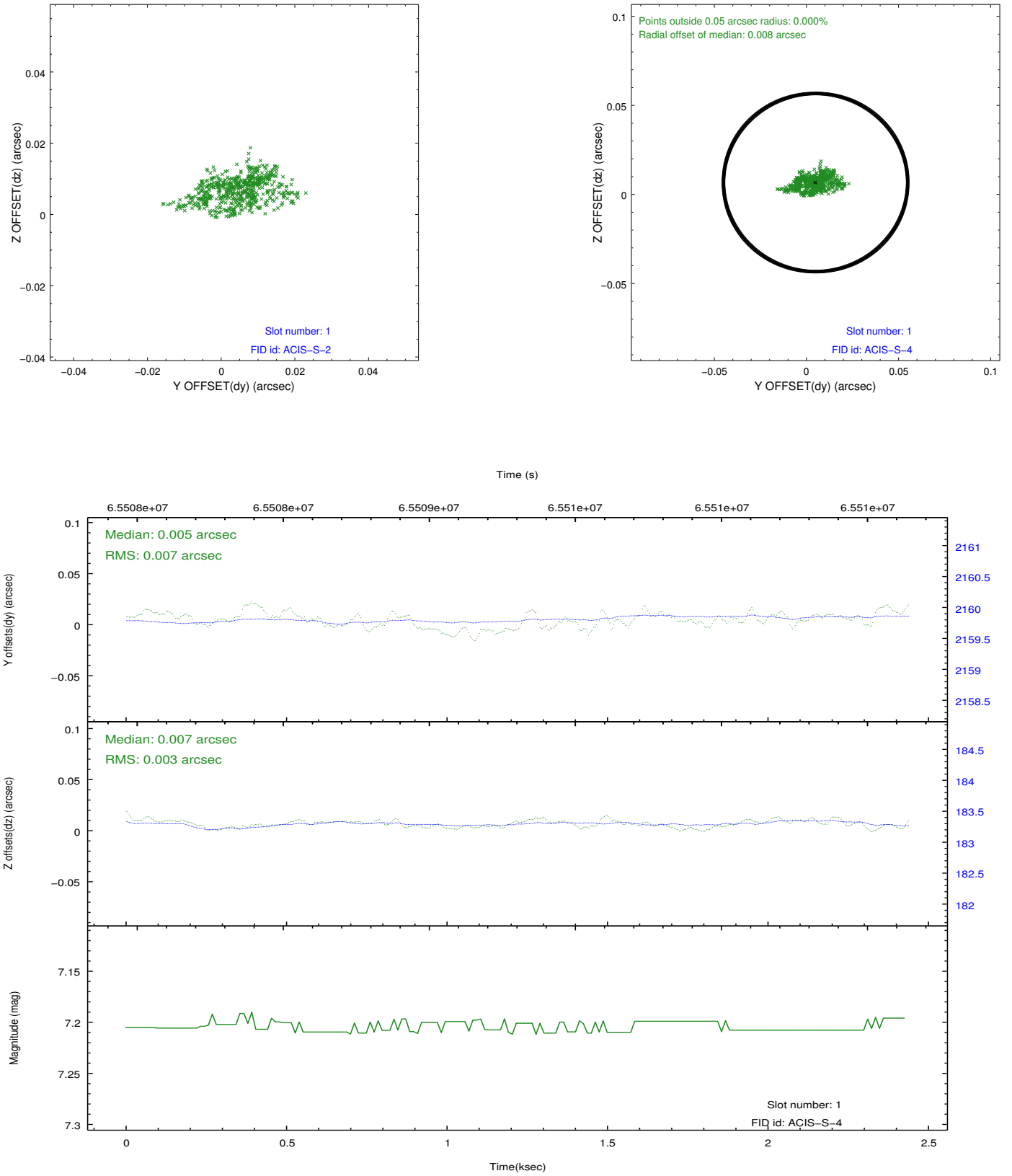


2.5 FID Slots

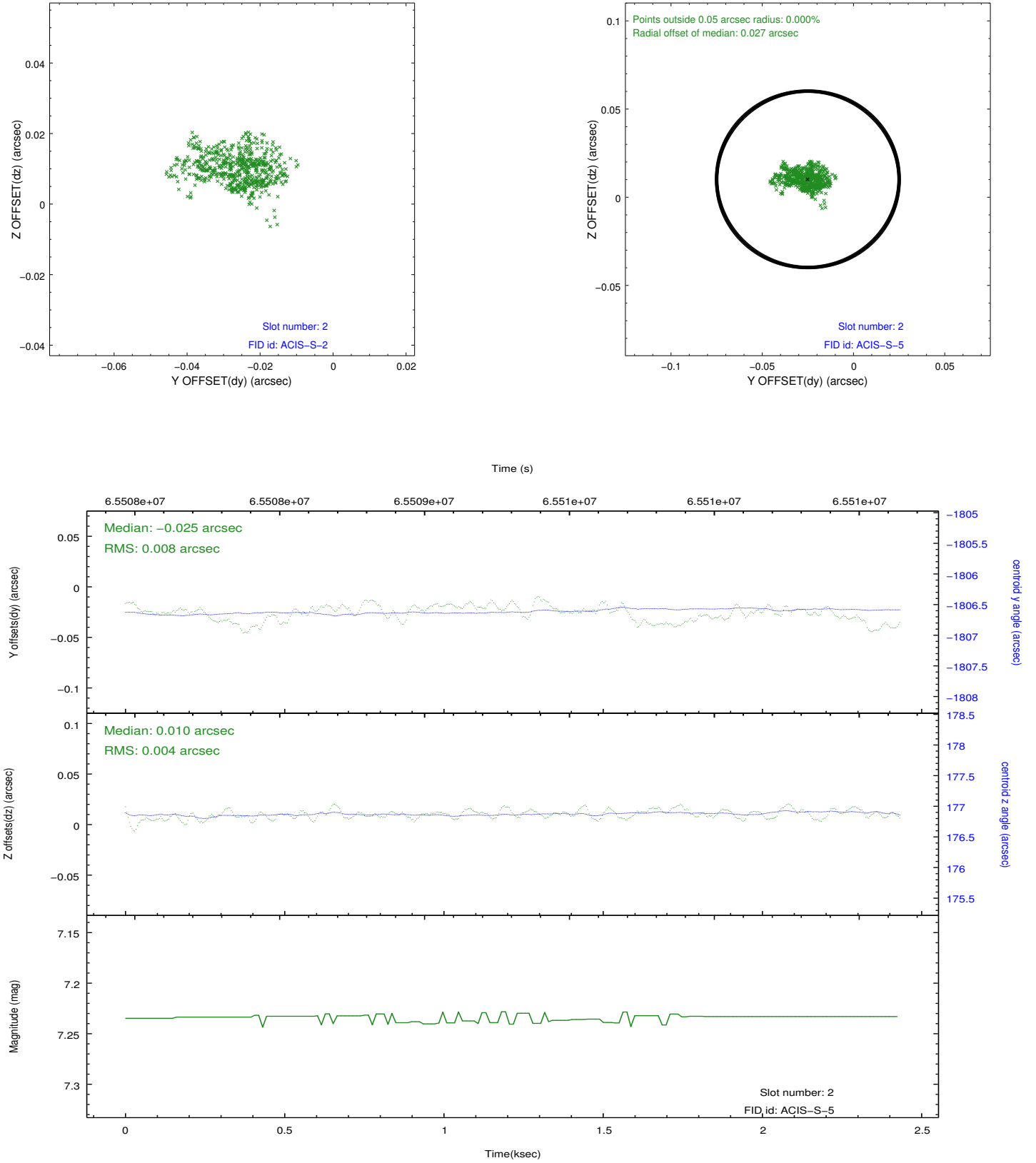
2.5.1 Slot 0



2.5.2 Slot 1



2.5.3 Slot 2



3 Point Sources

A Summary

A.1 Status

V&V Scientist	Joy Nichols
V&V Date (YYYY-MM-DD)	2010.02.11
V&V Edition	1
V&V Disposition and Status	OK
V&V Charge Time	1.152

A.2 Comments

Charge time for this ObsId remains at original value of 1.152 ksec, although with the current processing the charge time would have been 1.149 ksec.

=====

The focal plane temperature is approximately -110C during this observation. This reprocessing of the data applies no CTI correction because none is available for this temperature at present.

The ACIS CTI correction has not been calibrated at this temperature, because it was early in the mission, and ACIS had not yet been lowered to the standard -119.7 C. Both front and back illuminated chips are affected. However a T_GAIN correction has been applied to the BI chips (ACIS-5 and ACIS-7) data included here.

The ACIS spectral response calibration is less accurate at these warmer temperatures than it is at -119.7 C. Users whose science objectives depend on the most accurate spectral response (ie: fitting line-rich spectra) may notice an effect. Users whose science objectives do not depend on the most accurate spectral response should not notice an effect.