

# V&V Reference Report

## L2 ASCDS Version : 7.6.10

Observation 385 - L2 Version 001  
Chandra X-Ray Center

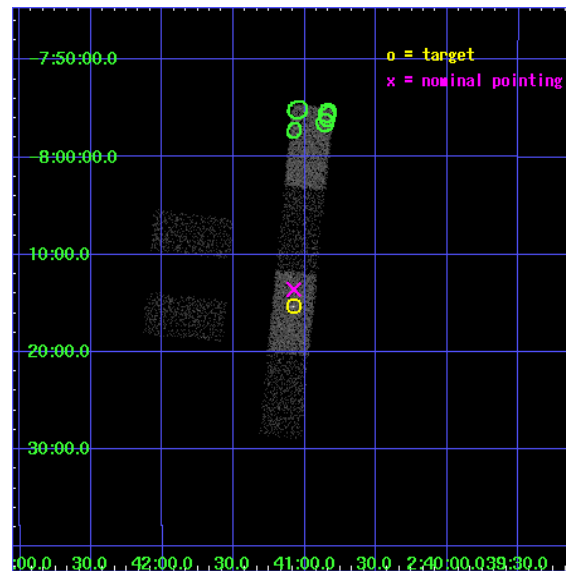
L2 Processing Date : Jun 6 2007

## Contents

<b>1</b>	<b>Front</b>	<b>2</b>
<b>2</b>	<b>OBI</b>	<b>3</b>
2.1	OBI . . . . .	3
2.1.1	Images . . . . .	3
2.1.2	Bias . . . . .	3
2.1.3	Parameters . . . . .	4
2.1.4	Events . . . . .	4
2.2	Compared Parameters . . . . .	5
2.3	Aspect . . . . .	6
2.4	Star Slots . . . . .	9
2.4.1	Slot 3 . . . . .	9
2.4.2	Slot 4 . . . . .	10
2.4.3	Slot 5 . . . . .	11
2.4.4	Slot 6 . . . . .	12
2.4.5	Slot 7 . . . . .	13
2.5	FID Slots . . . . .	14
2.5.1	Slot 0 . . . . .	14
2.5.2	Slot 1 . . . . .	15
2.5.3	Slot 2 . . . . .	16
<b>3</b>	<b>Point Sources</b>	<b>17</b>
<b>A</b>	<b>Summary</b>	<b>18</b>
A.1	Status . . . . .	18
A.2	Comments . . . . .	18

# 1 Front

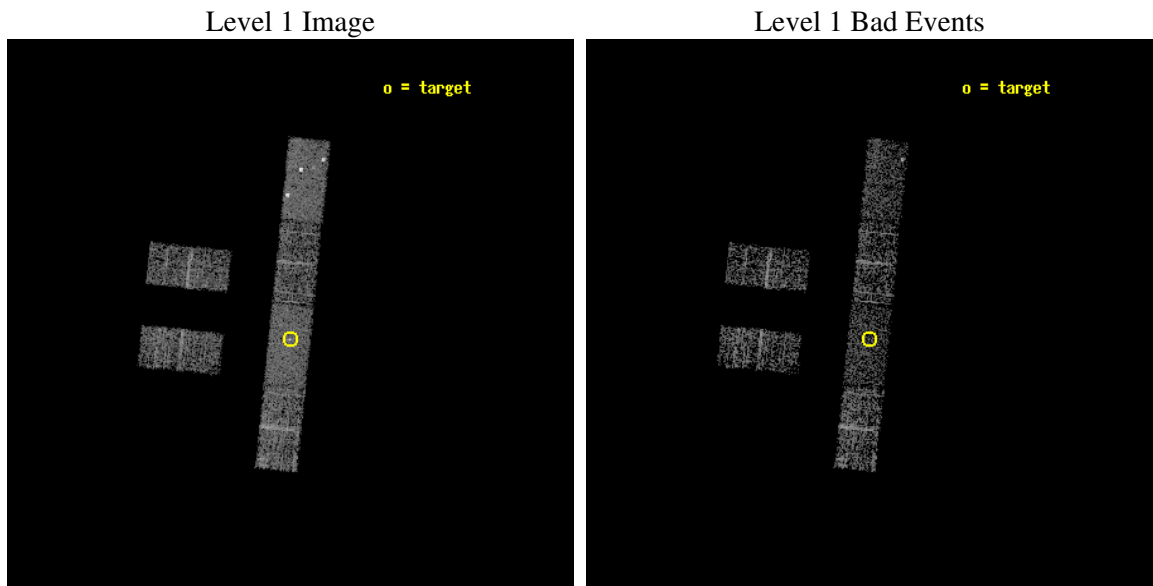
seq_num	700057
obs_id	385
title	LOW-LUMINOSITY ACTIVE GALACTIC NUCLEI IN NEARBY GALAXIES
observer	Prof. Gordon Garmire
object	NGC 1052
dtcycle	0
cycle	P
ra_targ	40.27
dec_targ	-8.255833
ra_nom	40.268972750436
dec_nom	-8.2265464714365
roll_nom	95.856597883512
revision	2
ontime	2393.9999960363
livetime	2340.6335510719
ontime2	2393.9999960363
ontime3	2393.9999960363
ontime5	2393.9999960363
ontime6	2393.9999960363
ontime7	2393.9999960363
ontime8	2393.9999960363
l2events	13316



## 2 OBI

### 2.1 OBI

#### 2.1.1 Images

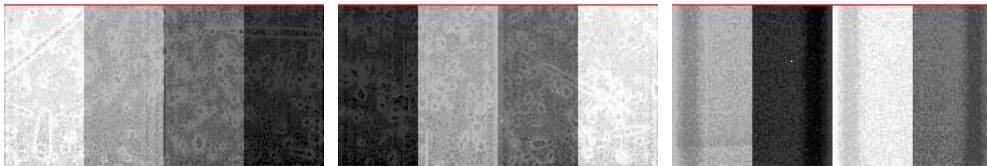


#### 2.1.2 Bias

Chip 2

Chip 3

Chip 5



Chip 6

Chip 7

Chip 8



### 2.1.3 Parameters

obi_num	0
ascdsver	7.6.10
caldsver	3.4.0
date	2007-06-06T12:31:24
revision	2

sched_exp_time	2000.000000
ontime	2393.9999960363
ontime2	2393.9999960363
ontime3	2393.9999960363
ontime5	2393.9999960363
ontime6	2393.9999960363
ontime7	2393.9999960363
ontime8	2393.9999960363
l1events	58471

### 2.1.4 Events

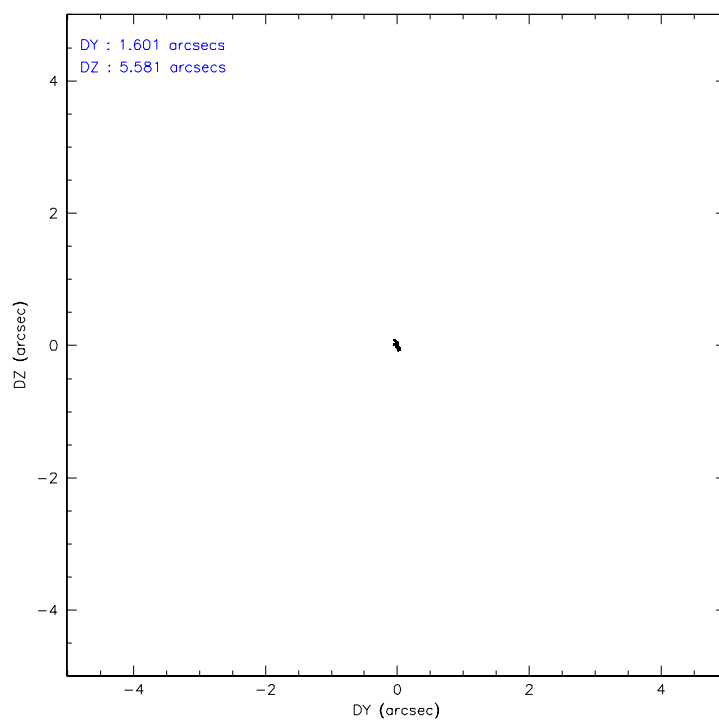
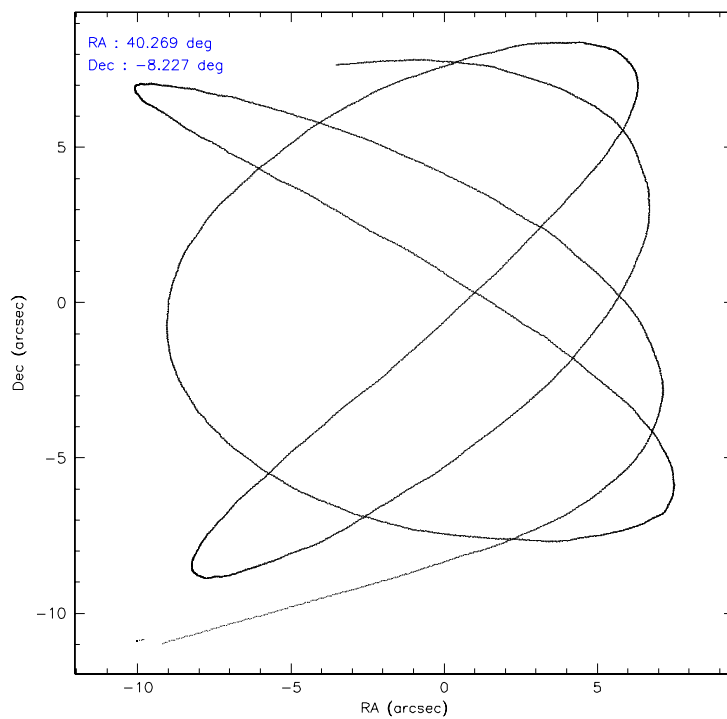
	ccd 2	ccd 3	ccd 5	ccd 6	ccd 7	ccd 8
level 1 events	7868	8063	13420	7657	10385	11078
rejected events	6981	7187	5463	6691	5139	9147
rejected %	88%	89%	40%	87%	49%	82%

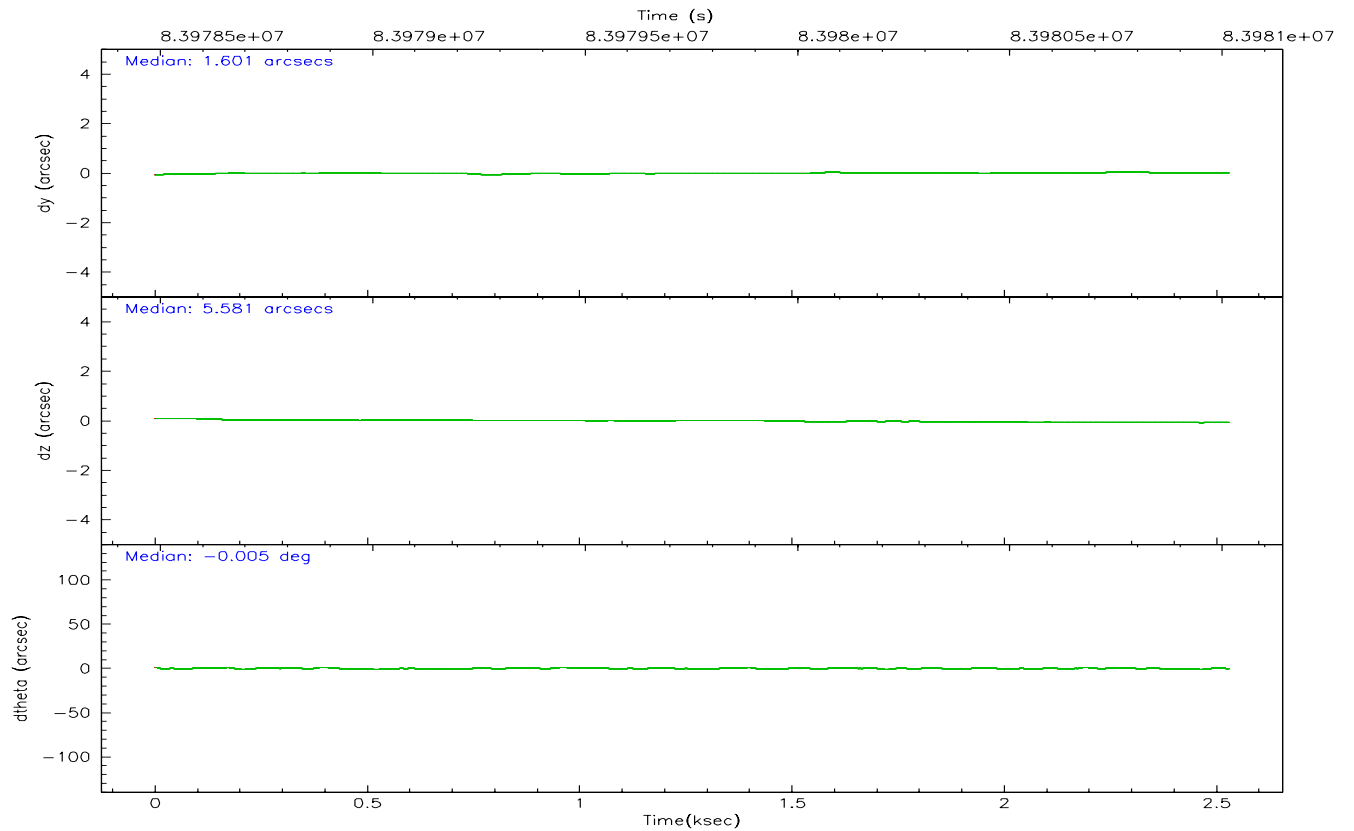
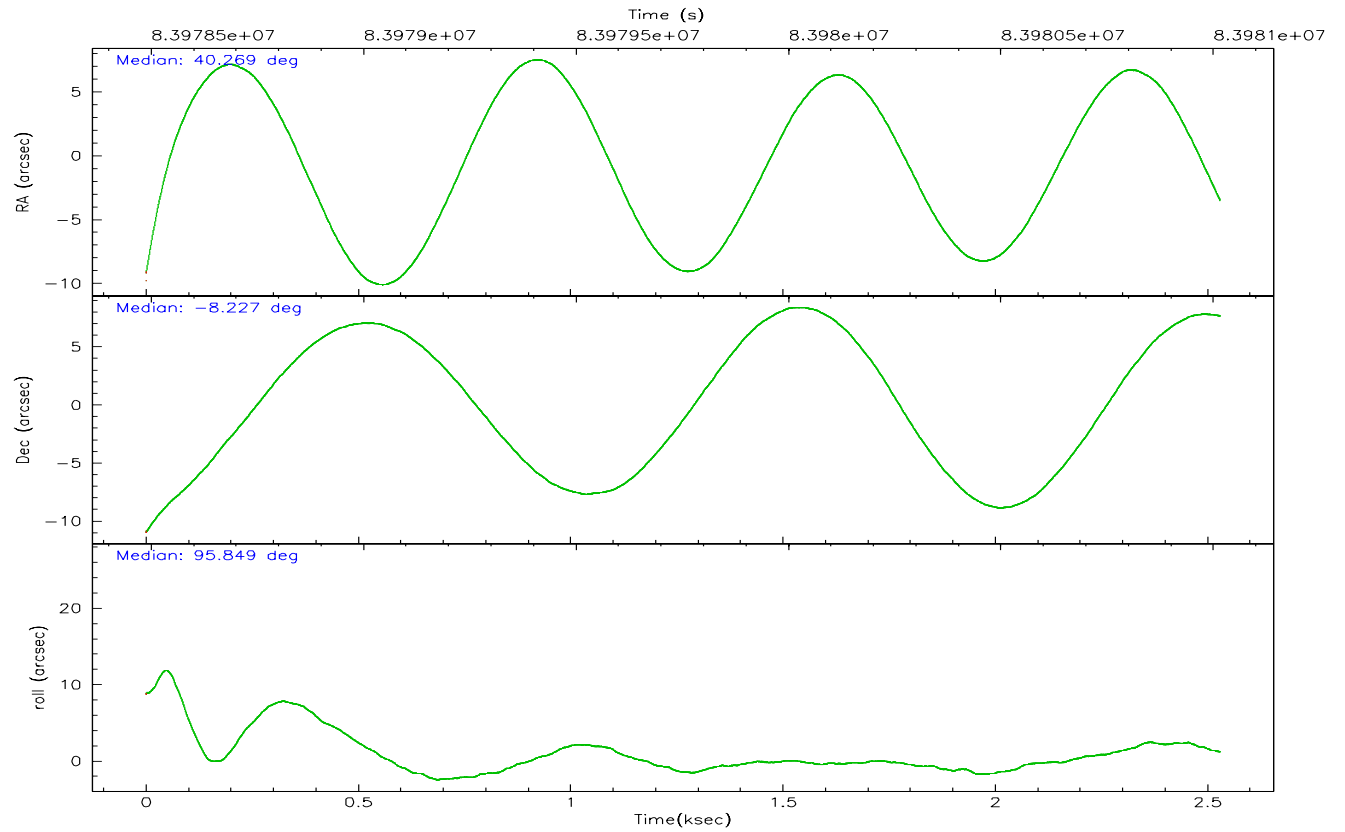
	ccd 2	ccd 3	ccd 5	ccd 6	ccd 7	ccd 8
grade 0 events	381	368	2896	402	615	639
	4%	4%	21%	5%	5%	5%
grade 1 events	1	1	40	2	10	6
	0%	0%	0%	0%	0%	0%
grade 2 events	159	158	1900	175	1093	353
	2%	1%	14%	2%	10%	3%
grade 3 events	97	100	312	137	524	184
	1%	1%	2%	1%	5%	1%
grade 4 events	83	106	312	94	528	178
	1%	1%	2%	1%	5%	1%
grade 5 events	226	230	888	271	853	380
	2%	2%	6%	3%	8%	3%
grade 6 events	168	145	2543	159	2496	577
	2%	1%	18%	2%	24%	5%
grade 7 events	6753	6955	4529	6417	4266	8761
	85%	86%	33%	83%	41%	79%

## 2.2 Compared Parameters

Parameter	Planned	Actual	Parameter	Planned	Actual
Instrument	ACIS	ACIS	Obspar format version number	6	6
Detector	ACIS-235678	ACIS-235678	Obspar file type	PREDICTED	ACTUAL
Grating	NONE	NONE	Obspar update status	NONE	UPDATED
Data mode	FAINT	FAINT	Number of optional ACIS chips dropped	0	0
Observation mode	POINTING	POINTING	On-chip summing requested	N	N
Pointing RA	40.285184	40.26897275043643	Subarray requested	CUSTOM	1/2
Pointing Dec	-8.248633	-8.226546471436478	Subarray start row	255	255
Pointing Roll	95.702278	95.85659788351167	Subarray row count	512	512
SIM focus pos (mm)	-0.684267	-0.6828225247311905	Alternating exposures requested	N	N
SIM defocus (mm)	0	0.001444936568705701	Primary exposure time	0.000000	1.8
SIM translation stage pos (mm)	-190.132523	-190.1425803651734			
SIM translation stage offset (mm)	0	0.01005778216563158			
Observation start time	83979017.184000	83977892.582496			
Observation start date	2000-08-29T23:29:13	2000-08-29T23:11:32			
Observation end time	83981017.184000	83981689.69513801			
Observation end date	2000-08-30T00:02:33	2000-08-30T00:14:49			
Read mode	TIMED	TIMED			

## 2.3 Aspect





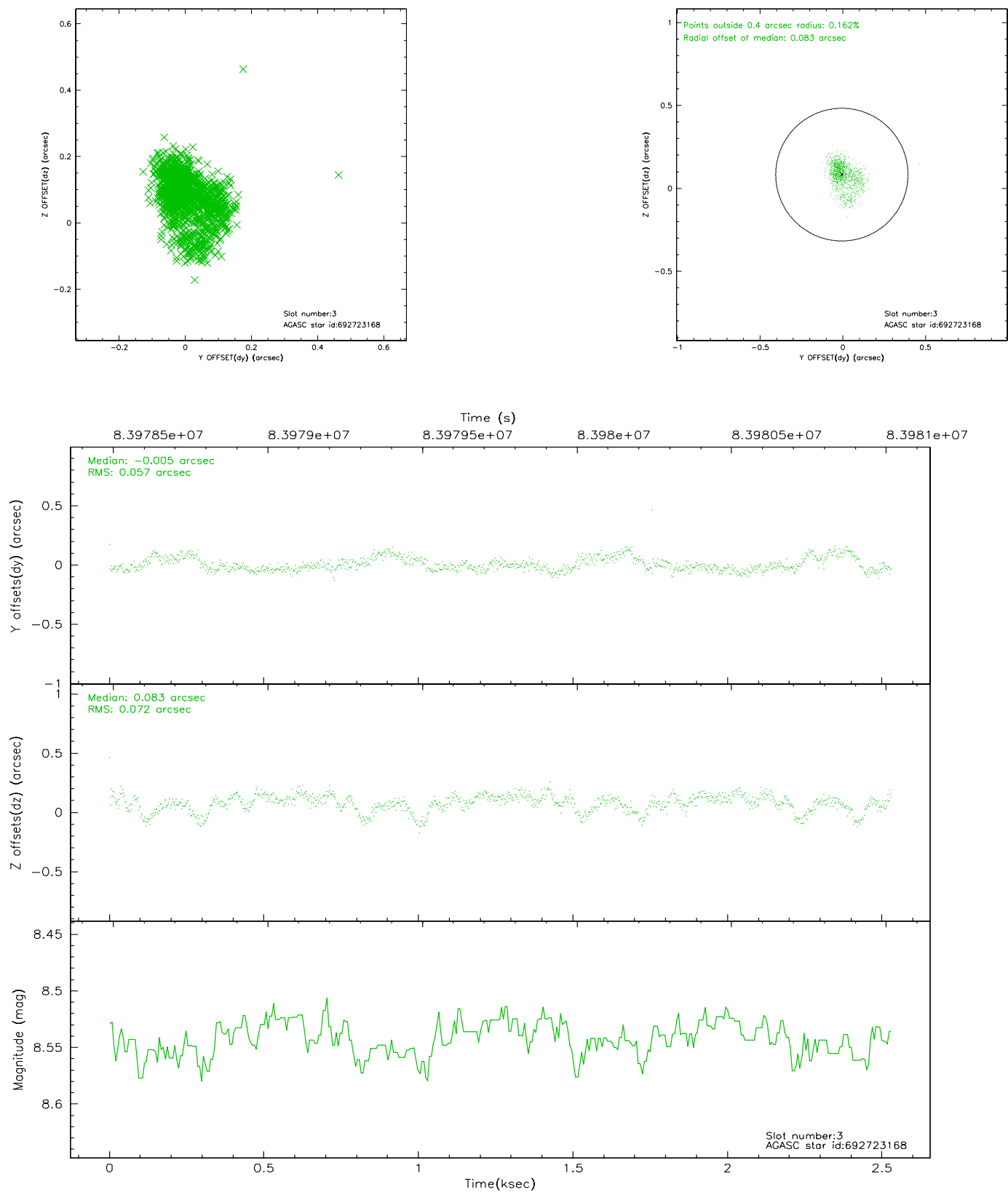
### Slot Statistics

slot	status	id	mag	n_pts	med_dy	med_dz	dr1	dr2	ra	dec	mean_y	mean_z
0	FID	ACIS-S-2	7.11	618	-0.026	0.033	0.006	0.009	0.000000	0.000000	-754.21	-1726.63
1	FID	ACIS-S-4	7.21	618	-0.062	0.004	0.004	0.009	0.000000	0.000000	2157.86	179.22
2	FID	ACIS-S-5	7.24	618	0.057	-0.027	0.006	0.010	0.000000	0.000000	-1803.70	175.73
3	GUIDE	692723168	8.54	1235	-0.005	0.083	0.094	0.163	40.831966	-8.281919	-313.56	-1925.40
4	GUIDE	692717048	8.26	1235	-0.089	-0.010	0.059	0.090	40.265114	-7.876896	1338.69	-62.39
5	GUIDE	692720256	8.23	1235	0.075	-0.094	0.069	0.102	40.539277	-8.375926	-544.62	-854.39
6	GUIDE	692717912	9.34	1235	0.046	-0.176	0.100	0.162	39.833965	-8.248709	158.24	1599.65
7	GUIDE	692719424	9.65	1232	-0.040	0.208	0.102	0.171	39.736411	-8.385493	-297.29	1996.13

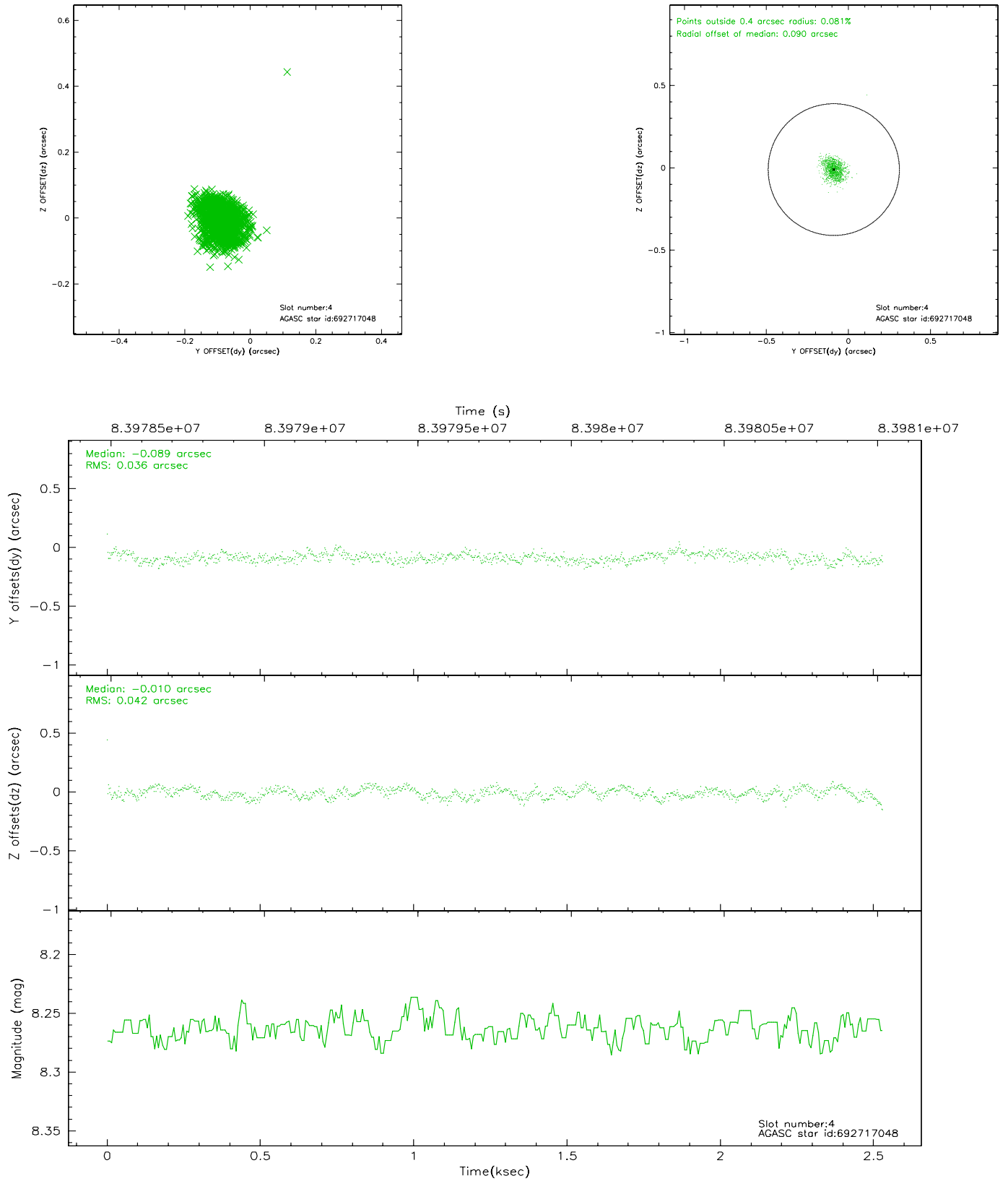


## 2.4 Star Slots

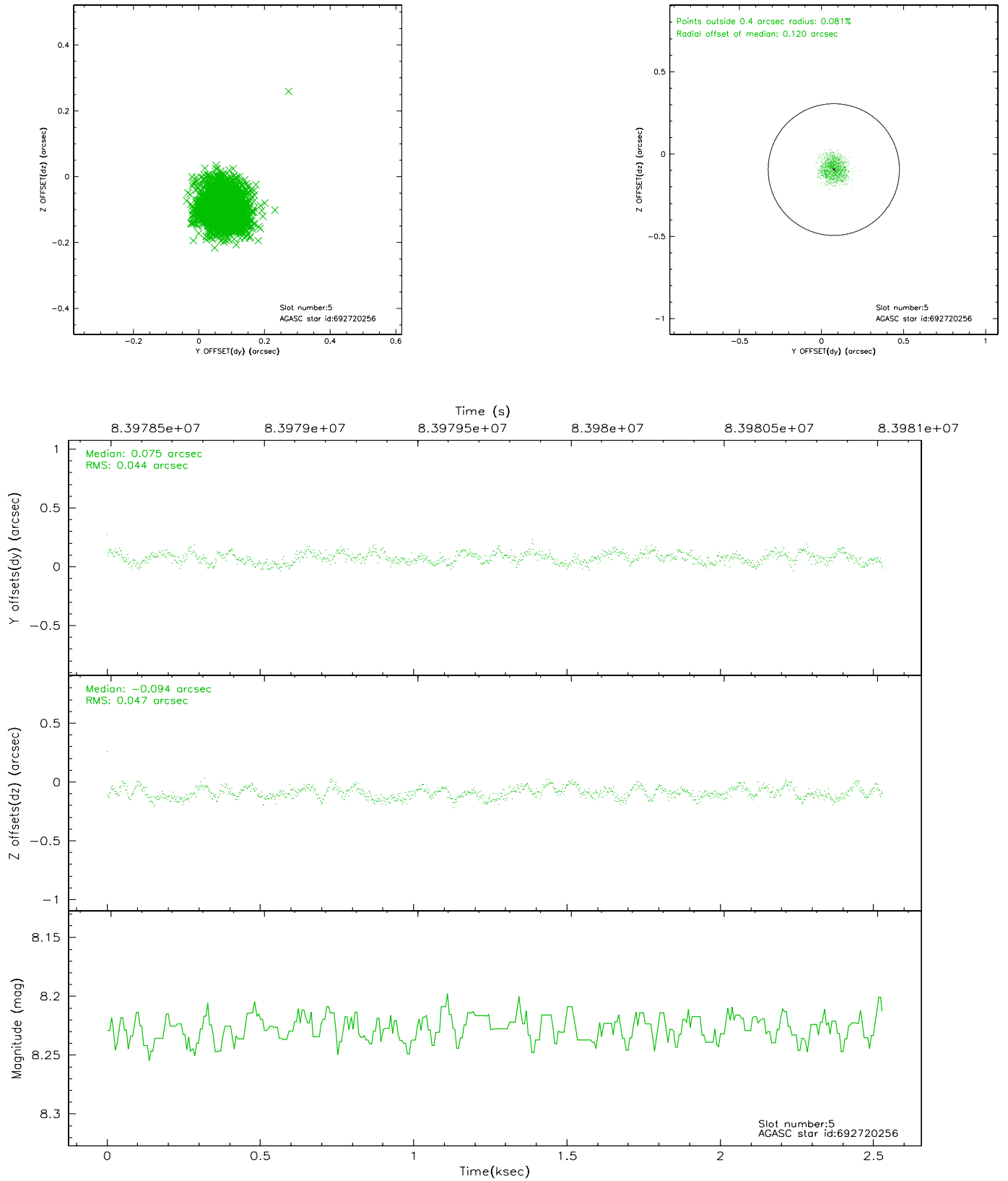
### 2.4.1 Slot 3



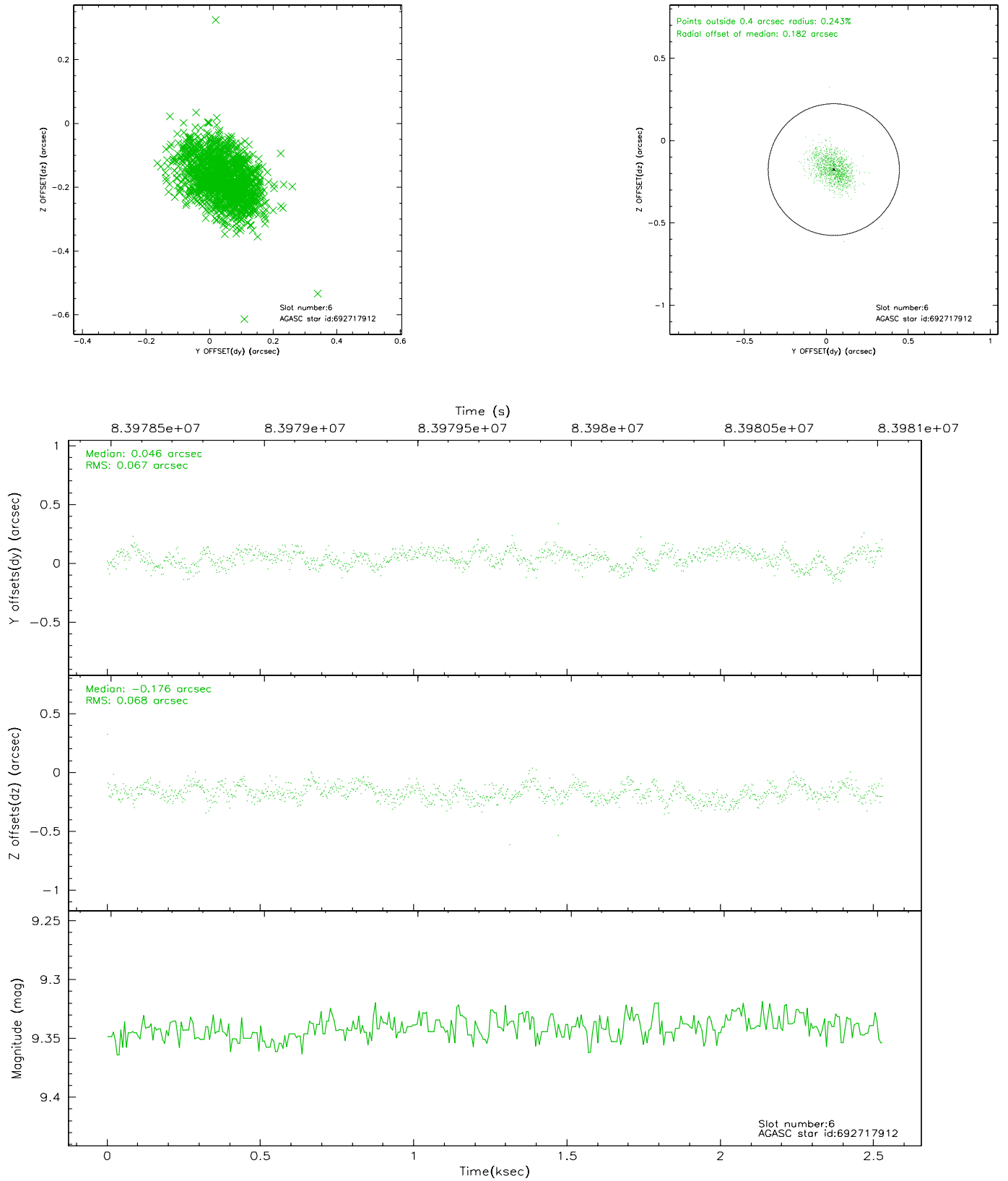
## 2.4.2 Slot 4



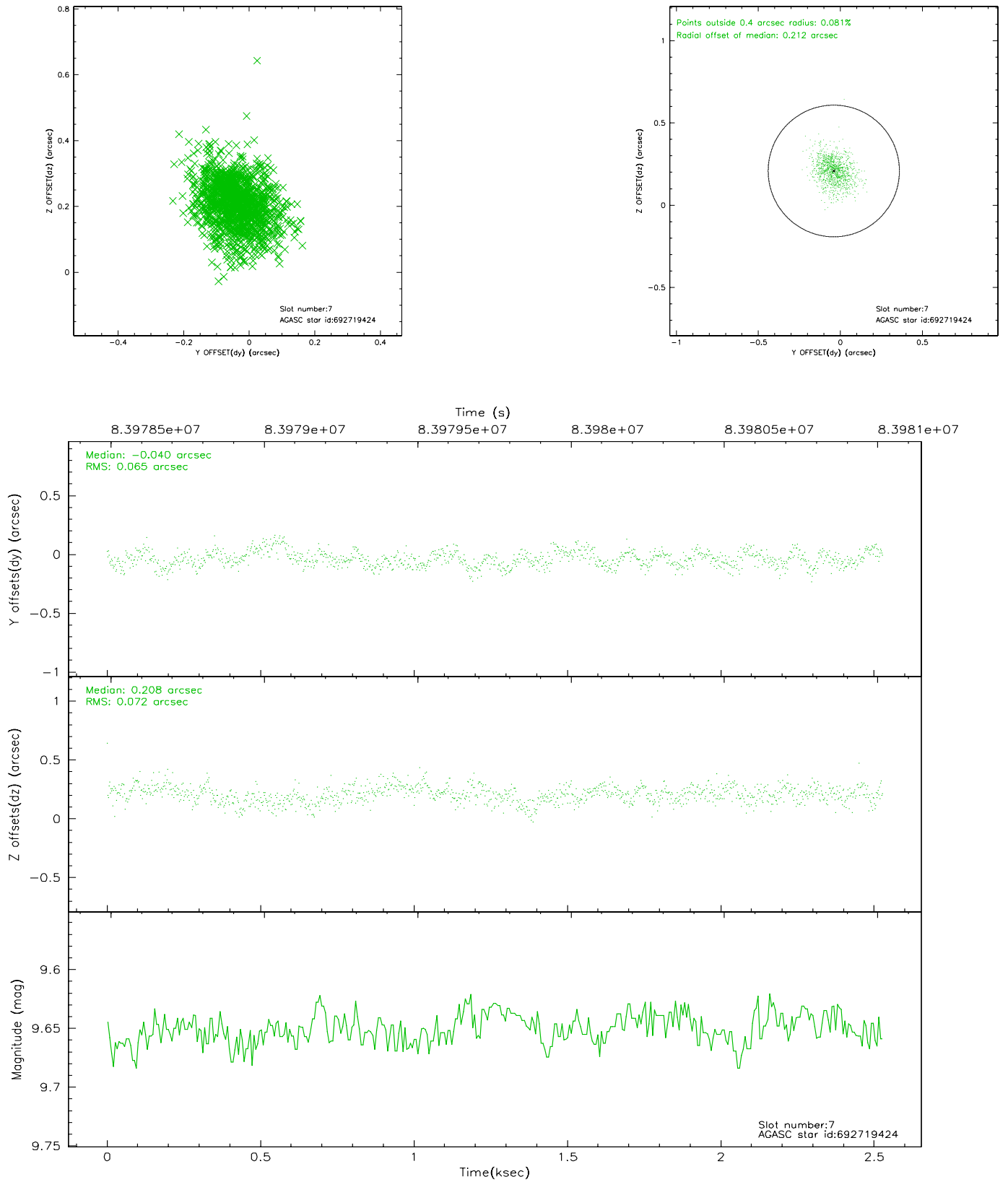
### 2.4.3 Slot 5



## 2.4.4 Slot 6

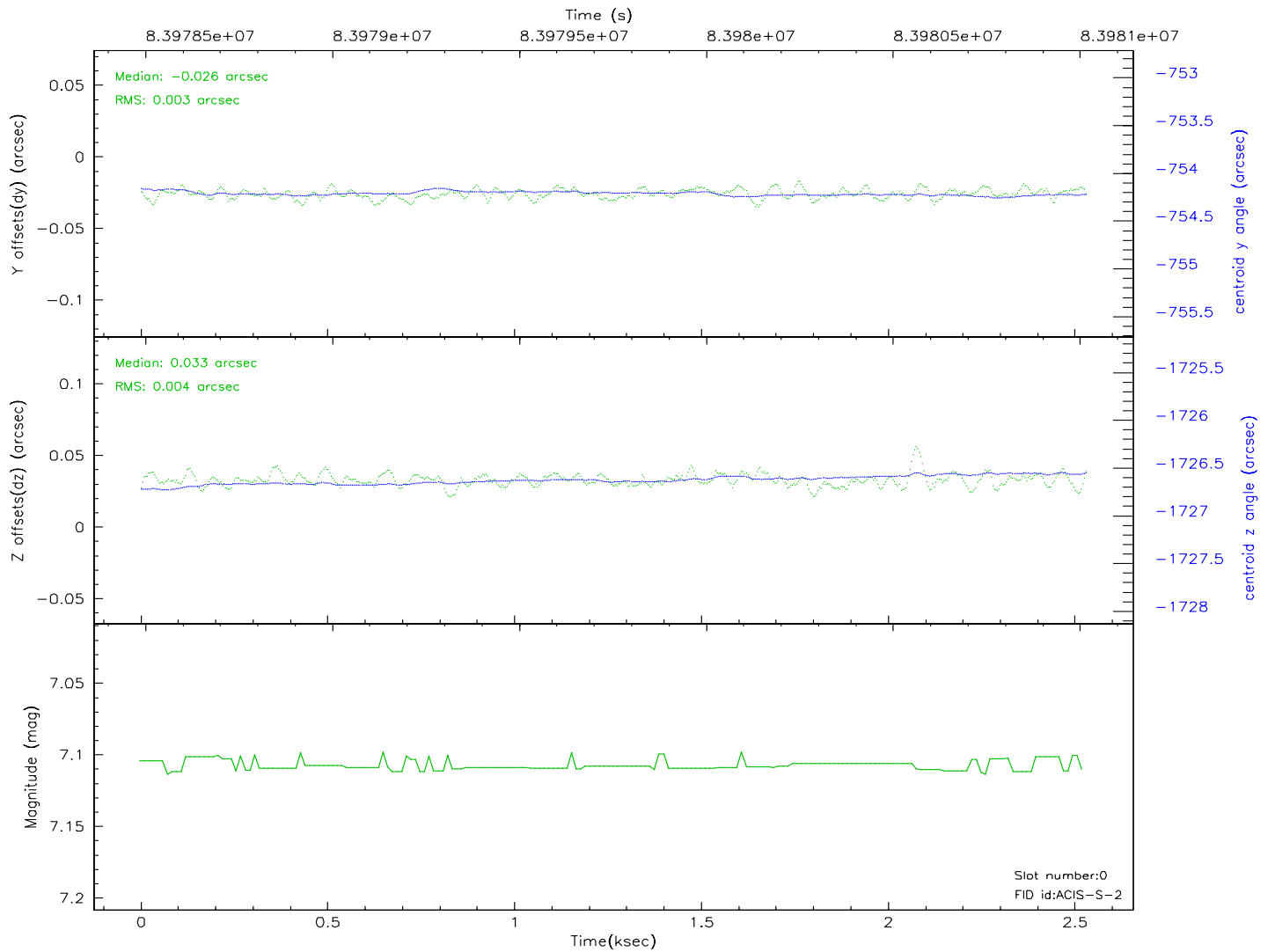
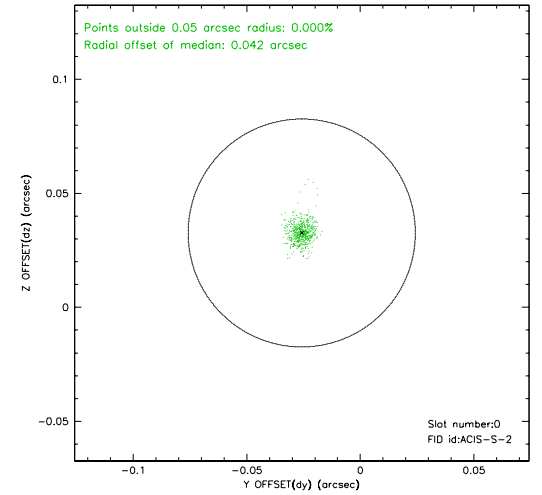
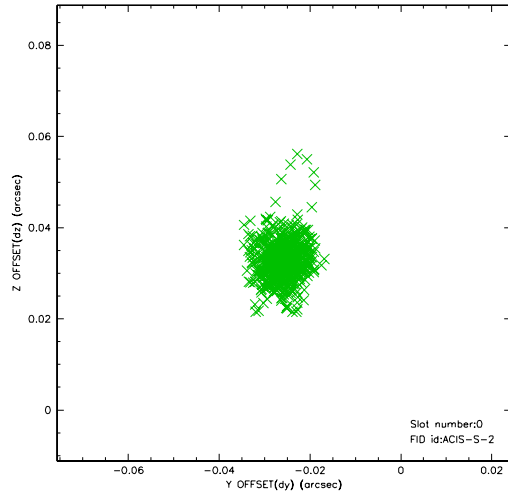


## 2.4.5 Slot 7

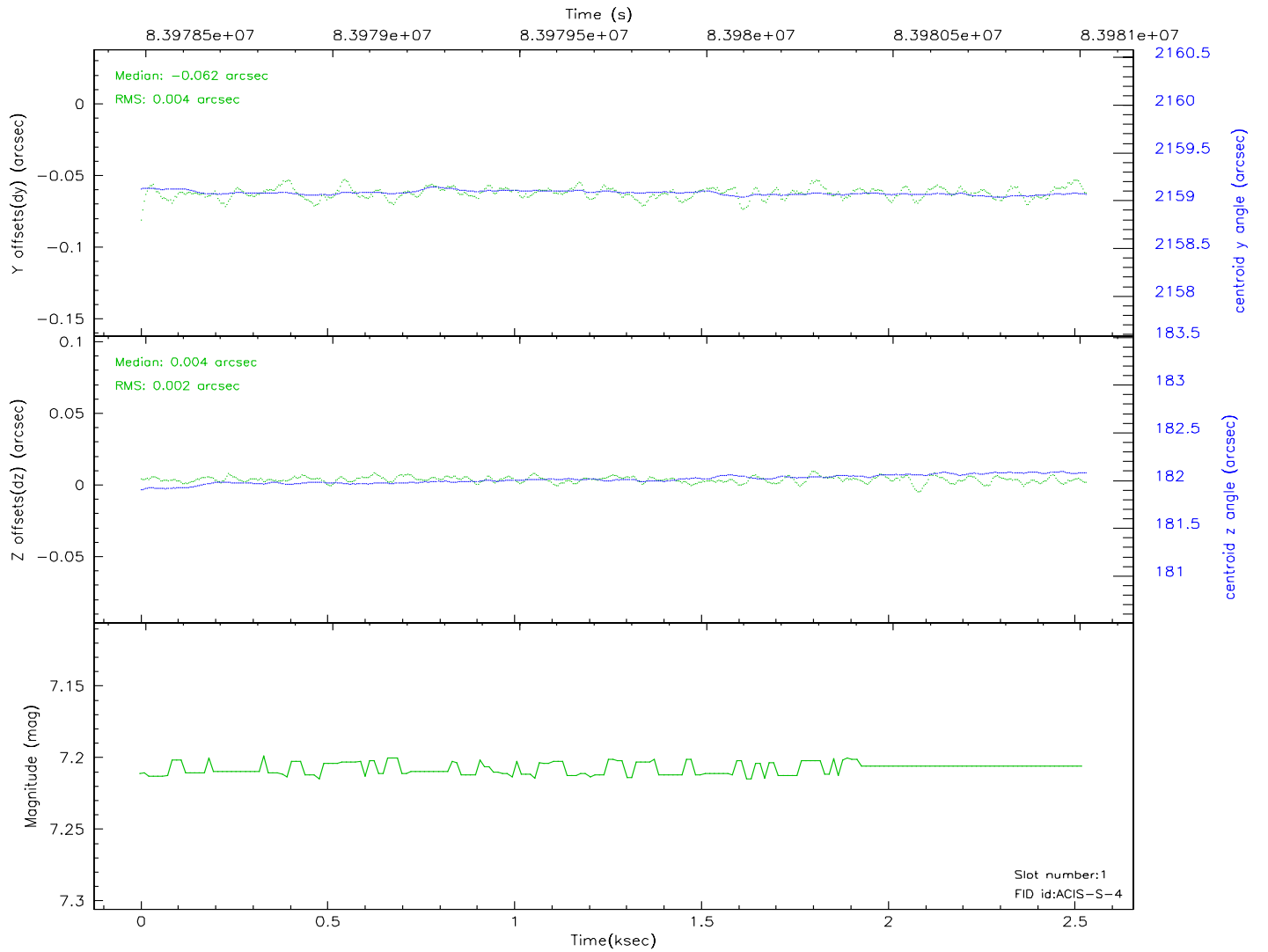
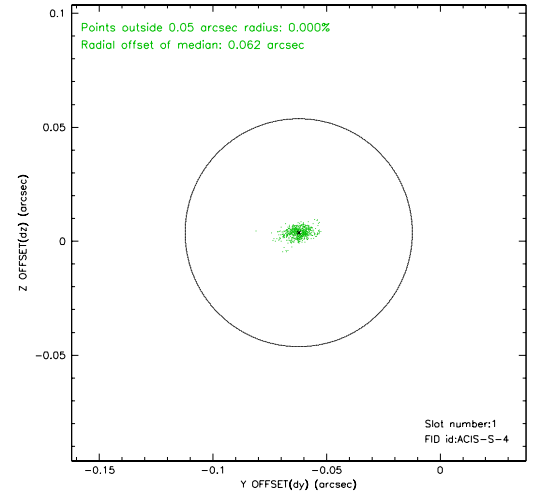
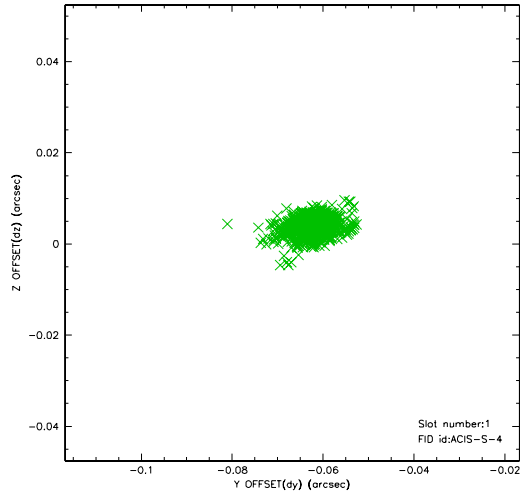


## 2.5 FID Slots

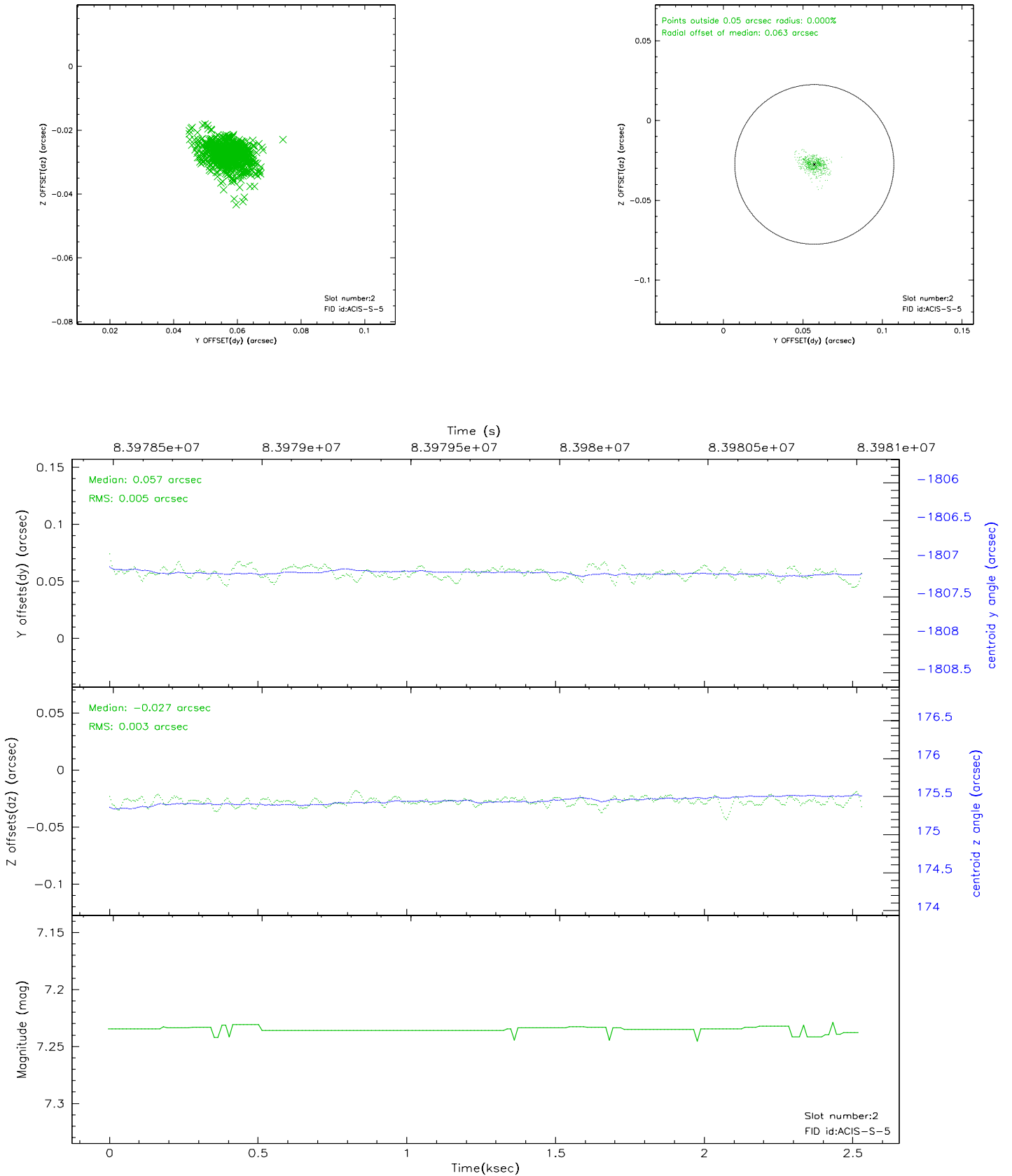
### 2.5.1 Slot 0



## 2.5.2 Slot 1

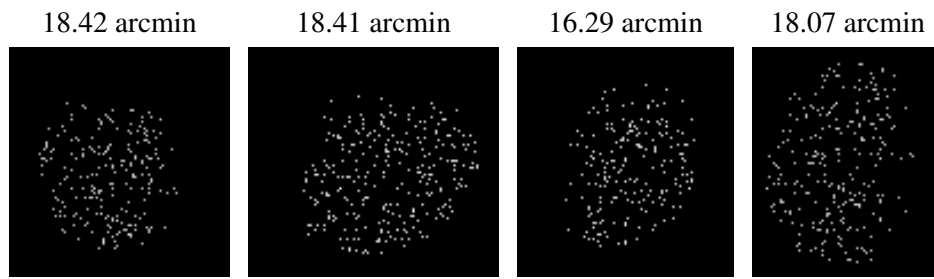


### 2.5.3 Slot 2





### 3 Point Sources



## A Summary

### A.1 Status

V&V Scientist	Jen Lauer
V&V Date (YYYY-MM-DD)	2007.06.06
V&V Edition	1
V&V Disposition and Status	OK
V&V Charge Time	2.395

### A.2 Comments