

V&V Reference Report

L2 ASCDS Version : 7.6.10

Observation 374 - L2 Version 001
Chandra X-Ray Center

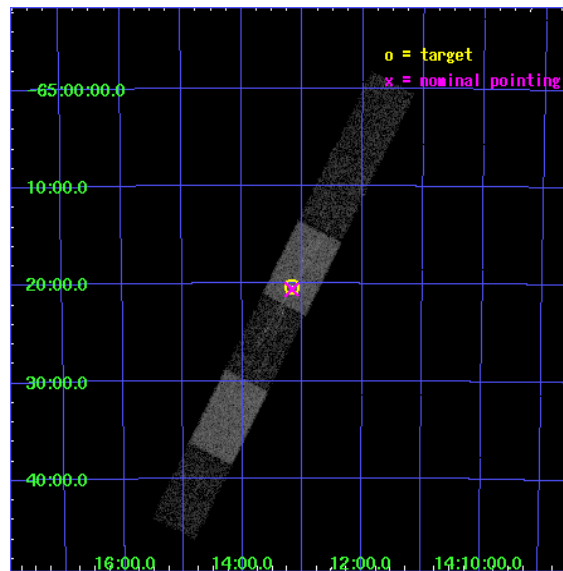
L2 Processing Date : May 25 2007

Contents

1	Front	2
2	OBI	3
2.1	OBI	3
2.1.1	Images	3
2.1.2	Bias	3
2.1.3	Parameters	4
2.1.4	Events	4
2.2	Compared Parameters	5
2.3	Aspect	6
2.4	Star Slots	9
2.4.1	Slot 3	9
2.4.2	Slot 4	10
2.4.3	Slot 5	11
2.4.4	Slot 6	12
2.4.5	Slot 7	13
2.5	FID Slots	14
2.5.1	Slot 0	14
2.5.2	Slot 1	15
2.5.3	Slot 2	16
3	Gratings	17
3.1	HEG Arm	17
3.2	MEG Arm	19
A	Summary	21
A.1	Status	21
A.2	Comments	21

1 Front

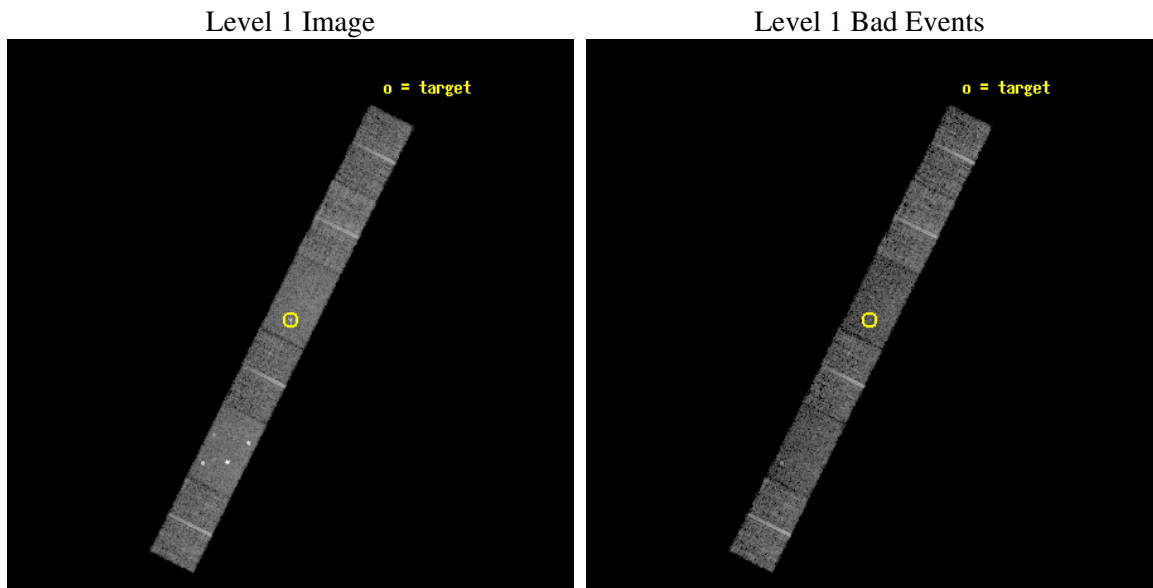
seq_num	700046
obs_id	374
title	ACIS GRATING SPECTROSCOPY OF SEYFERT GALAXIES
observer	Prof. Gordon Garmire
object	CIRCINUS GALAXY
dtcycle	0
cycle	P
ra_targ	213.2925
dec_targ	-65.339056
ra_nom	213.29333846279
dec_nom	-65.343695841228
roll_nom	296.56496074759
revision	3
ontime	7257.5999794006
livetime	7118.4844546301
ontime4	7257.5999794006
ontime5	7257.5999794006
ontime6	7257.5999794006
ontime7	7257.5999794006
ontime8	7257.5999794006
ontime9	7257.5999794006
l2events	42253



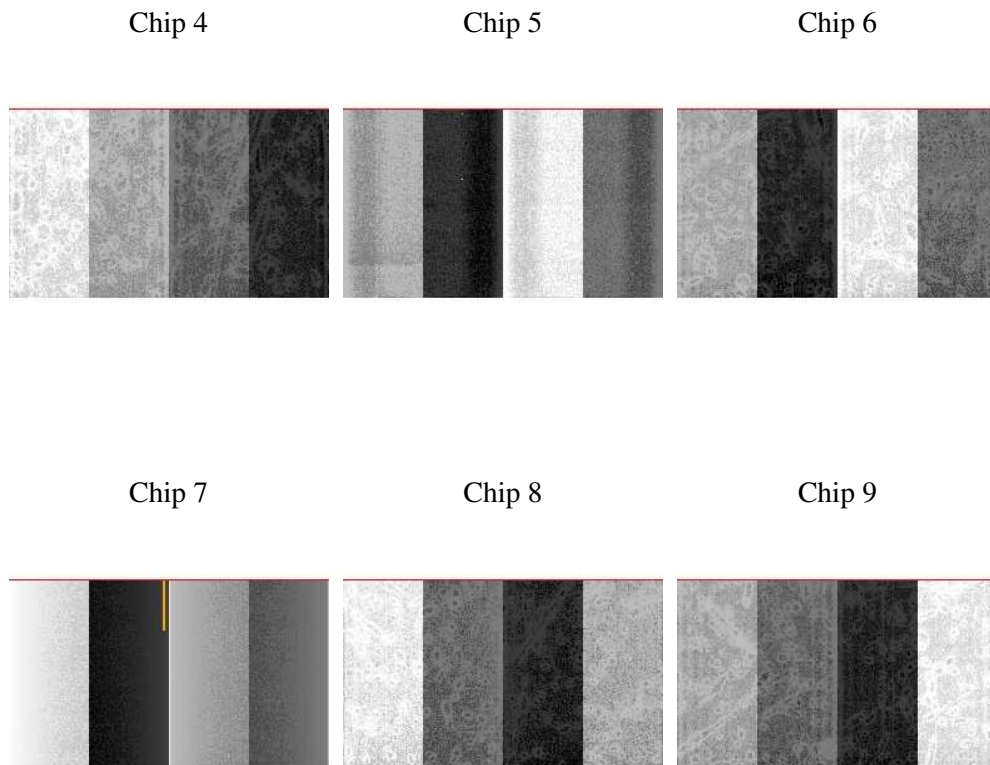
2 OBI

2.1 OBI

2.1.1 Images



2.1.2 Bias



2.1.3 Parameters

obi_num	0
ascdsver	7.6.10
caldbver	3.4.0
date	2007-05-25T16:12:26
revision	3

sched_exp_time	70000.000000
ontime	7257.5999794006
ontime4	7257.5999794006
ontime5	7257.5999794006
ontime6	7257.5999794006
ontime7	7257.5999794006
ontime8	7257.5999794006
ontime9	7257.5999794006
l1events	204482

2.1.4 Events

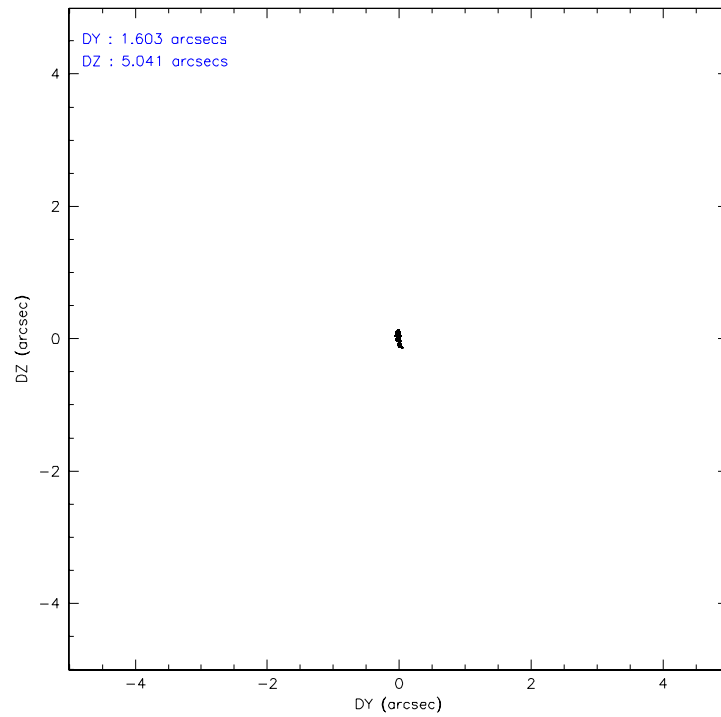
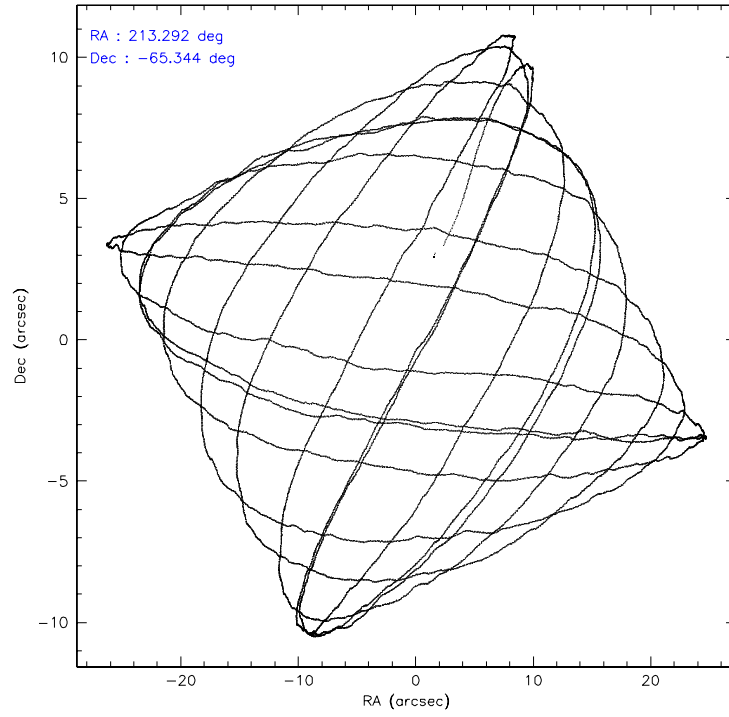
	ccd 4	ccd 5	ccd 6	ccd 7	ccd 8	ccd 9
level 1 events	31510	40928	29707	34927	38528	28882
rejected events	28234	19272	26162	18890	31322	25738
rejected %	89%	47%	88%	54%	81%	89%

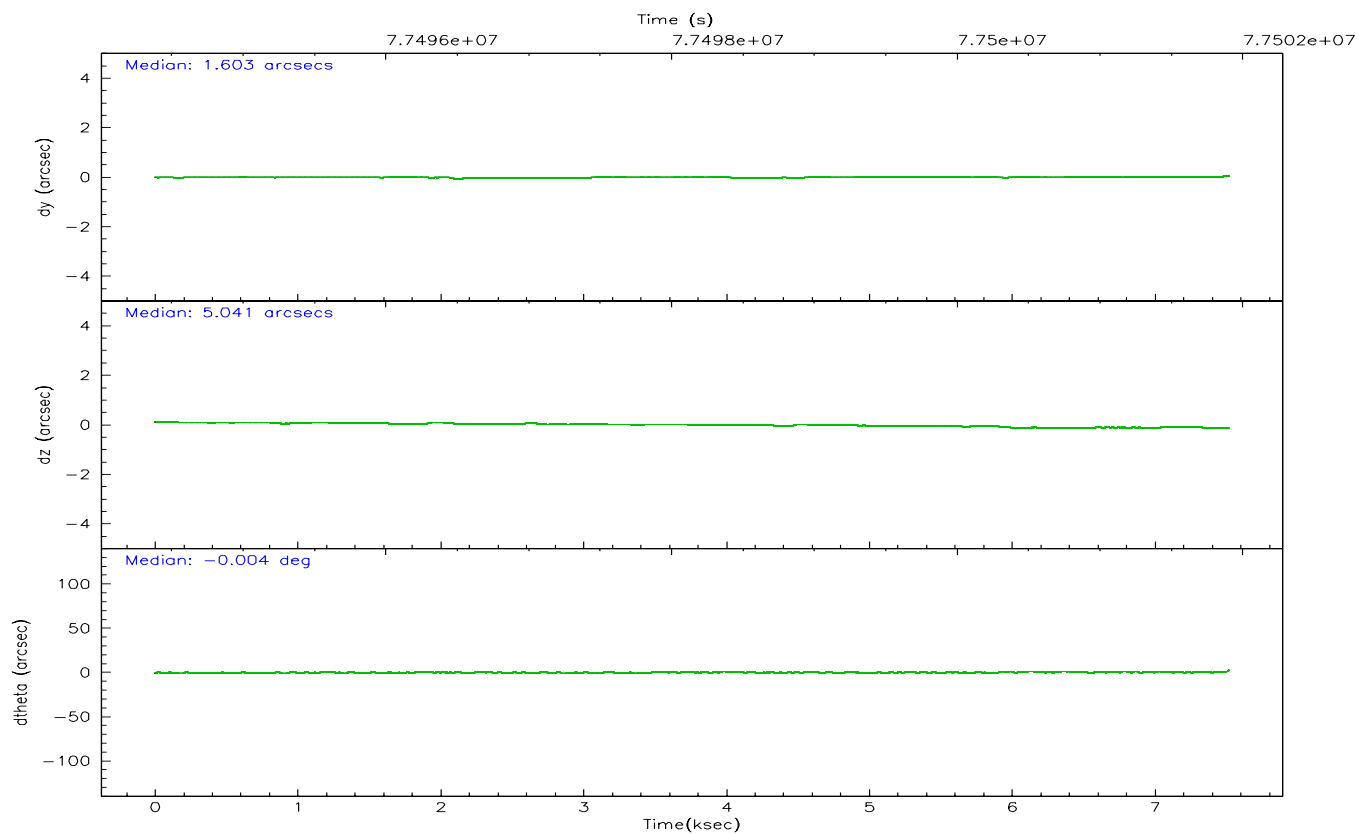
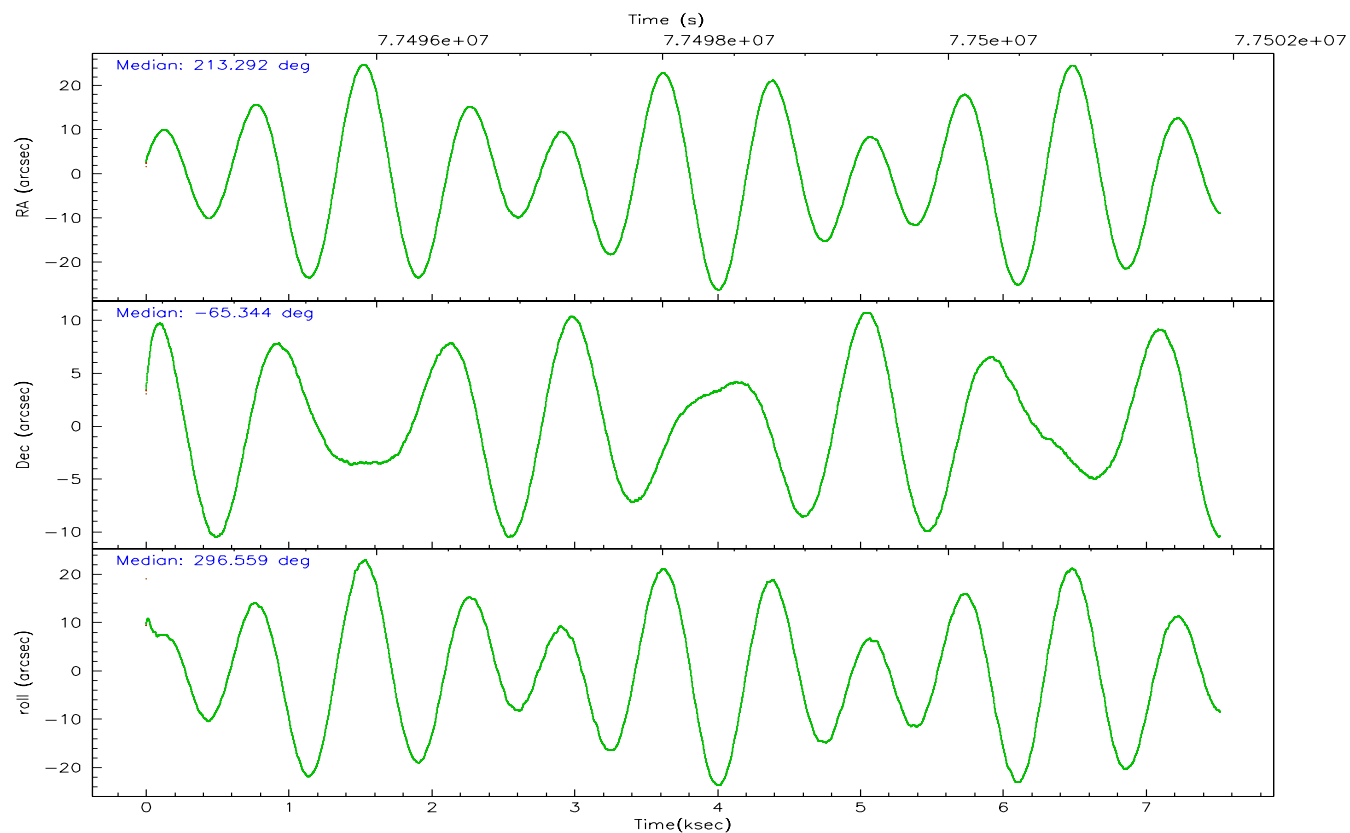
	ccd 4	ccd 5	ccd 6	ccd 7	ccd 8	ccd 9
grade 0 events	1263	6387	1525	1919	2252	1307
	4%	15%	5%	5%	5%	4%
grade 1 events	13	48	7	42	16	7
	0%	0%	0%	0%	0%	0%
grade 2 events	731	5463	621	3304	1490	586
	2%	13%	2%	9%	3%	2%
grade 3 events	394	882	376	1595	793	348
	1%	2%	1%	4%	2%	1%
grade 4 events	361	793	386	1571	763	339
	1%	1%	1%	4%	1%	1%
grade 5 events	947	2859	1075	3190	1393	1043
	3%	6%	3%	9%	3%	3%
grade 6 events	530	8179	645	7683	1920	570
	1%	19%	2%	21%	4%	1%
grade 7 events	27271	16317	25072	15623	29901	24682
	86%	39%	84%	44%	77%	85%

2.2 Compared Parameters

Parameter	Planned	Actual	Parameter	Planned	Actual
Instrument	ACIS	ACIS	Obspar format version number	6	6
Detector	ACIS-456789	ACIS-456789	Obspar file type	PREDICTED	ACTUAL
Grating	HETG	HETG	Obspar update status	NONE	UPDATED
Data mode	FAINT	FAINT	Number of optional ACIS chips dropped	0	0
Observation mode	POINTING	POINTING	On-chip summing requested	N	N
Pointing RA	213.238284	213.2933384627899	Subarray requested	CUSTOM	CUSTOM
Pointing Dec	-65.328696	-65.3436958412284	Subarray start row	212	212
Pointing Roll	296.358279	296.5649607475934	Subarray row count	600	600
SIM focus pos (mm)	-0.684267	-0.6828225247311905	Alternating exposures requested	N	N
SIM defocus (mm)	0	0.001444936568705701	Primary exposure time	0.000000	2.1
SIM translation stage pos (mm)	-190.132523	-190.1400660498719			
SIM translation stage offset (mm)	0	0.00754346686406393			
Observation start time	77494804.184000	77493733.116712			
Observation start date	2000-06-15T22:19:00	2000-06-15T22:02:13			
Observation end time	77564804.184000	77501903.392013			
Observation end date	2000-06-16T17:45:40	2000-06-16T00:18:23			
Read mode	TIMED	TIMED			

2.3 Aspect



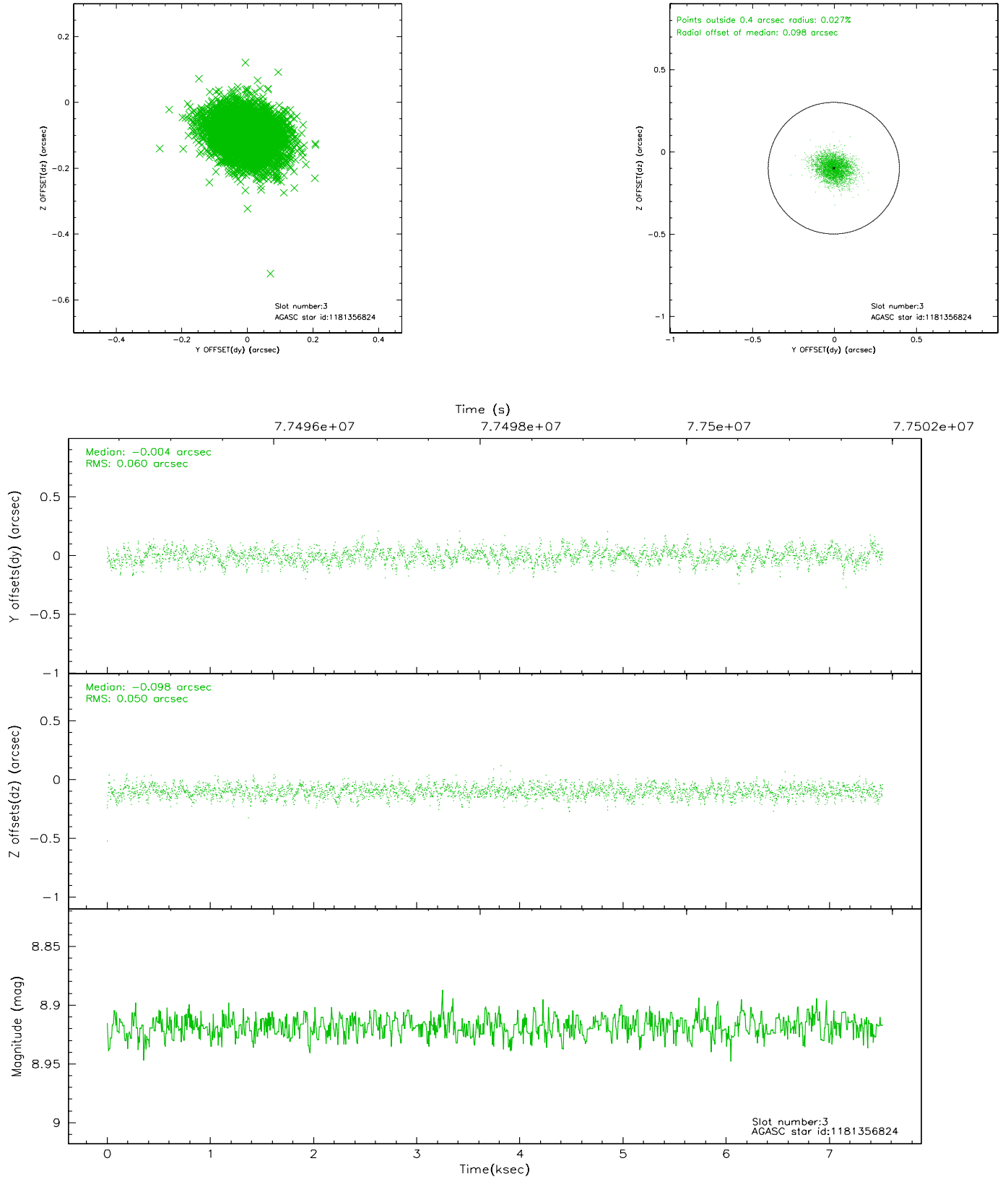


Slot Statistics

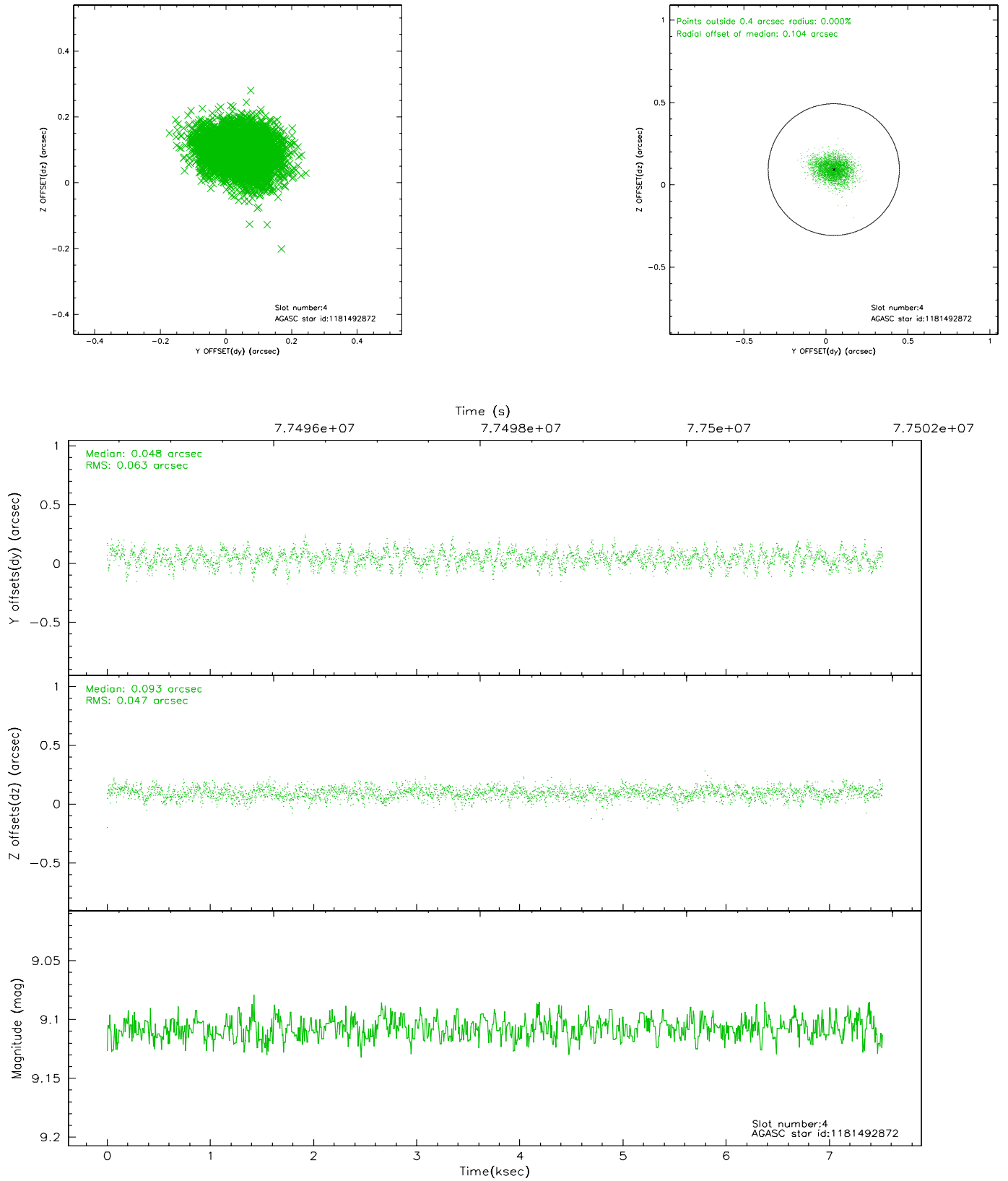
slot	status	id	mag	n_pts	med_dy	med_dz	dr1	dr2	ra	dec	mean_y	mean_z
0	FID	ACIS-S-2	7.10	1834	-0.022	0.024	0.006	0.011	0.000000	0.000000	-754.22	-1726.13
1	FID	ACIS-S-4	7.21	1835	-0.048	0.004	0.005	0.008	0.000000	0.000000	2158.69	181.57
2	FID	ACIS-S-5	7.23	1835	0.039	-0.020	0.006	0.011	0.000000	0.000000	-1806.03	176.06
3	GUIDE	1181356824	8.92	3668	-0.004	-0.098	0.083	0.135	213.100076	-64.682630	-2178.20	842.99
4	GUIDE	1181492872	9.11	3663	0.048	0.093	0.084	0.136	214.965330	-65.517798	1784.96	1992.35
5	GUIDE	1181356256	9.36	3668	-0.087	-0.032	0.093	0.147	211.557959	-65.462249	-653.66	-2477.25
6	GUIDE	1181493248	9.60	3668	0.116	0.081	0.094	0.156	214.599761	-65.623973	1870.16	1331.75
7	GUIDE	1181352864	9.60	3595	-0.070	-0.044	0.110	0.177	211.568687	-65.298573	-1181.60	-2215.45

2.4 Star Slots

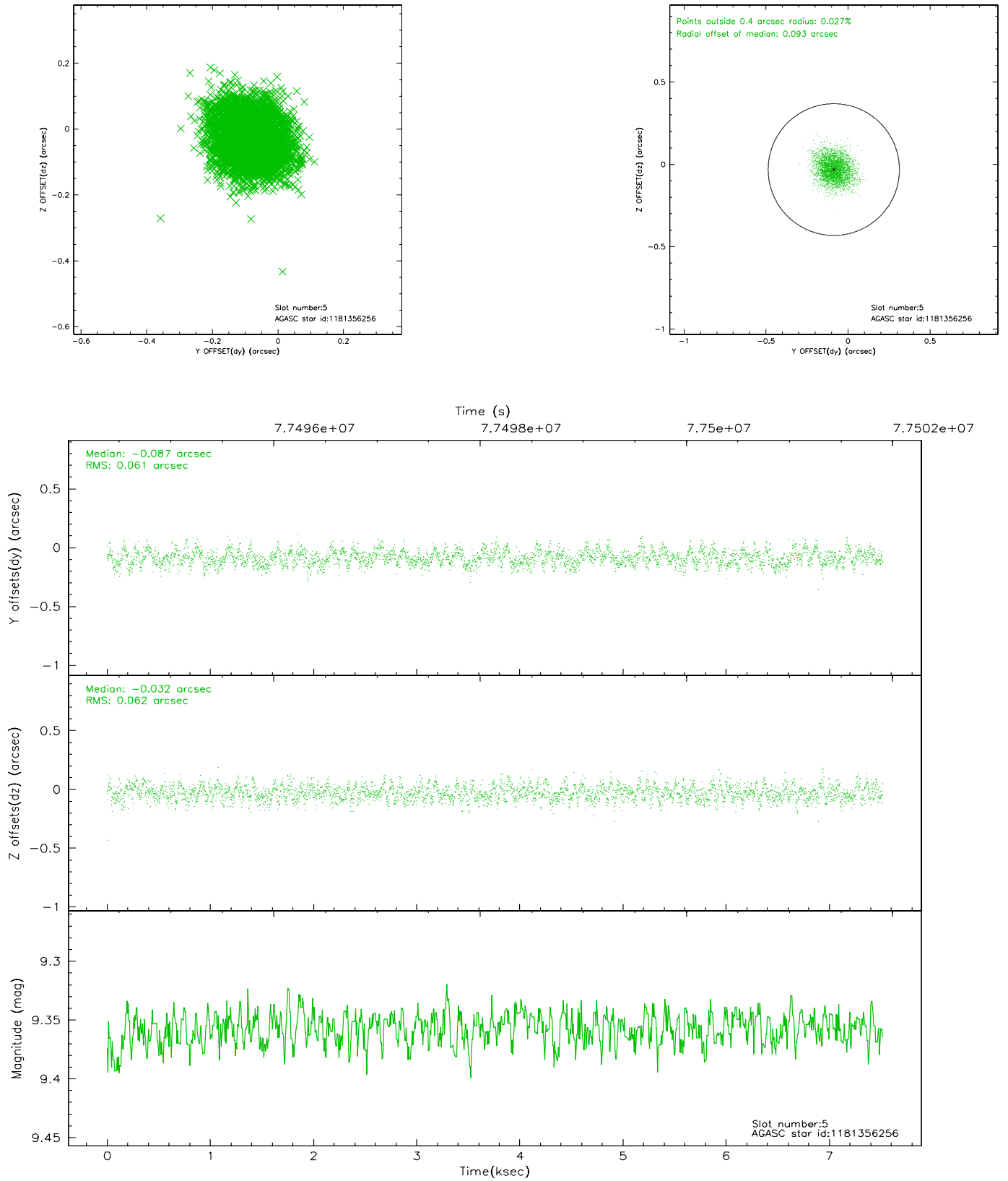
2.4.1 Slot 3



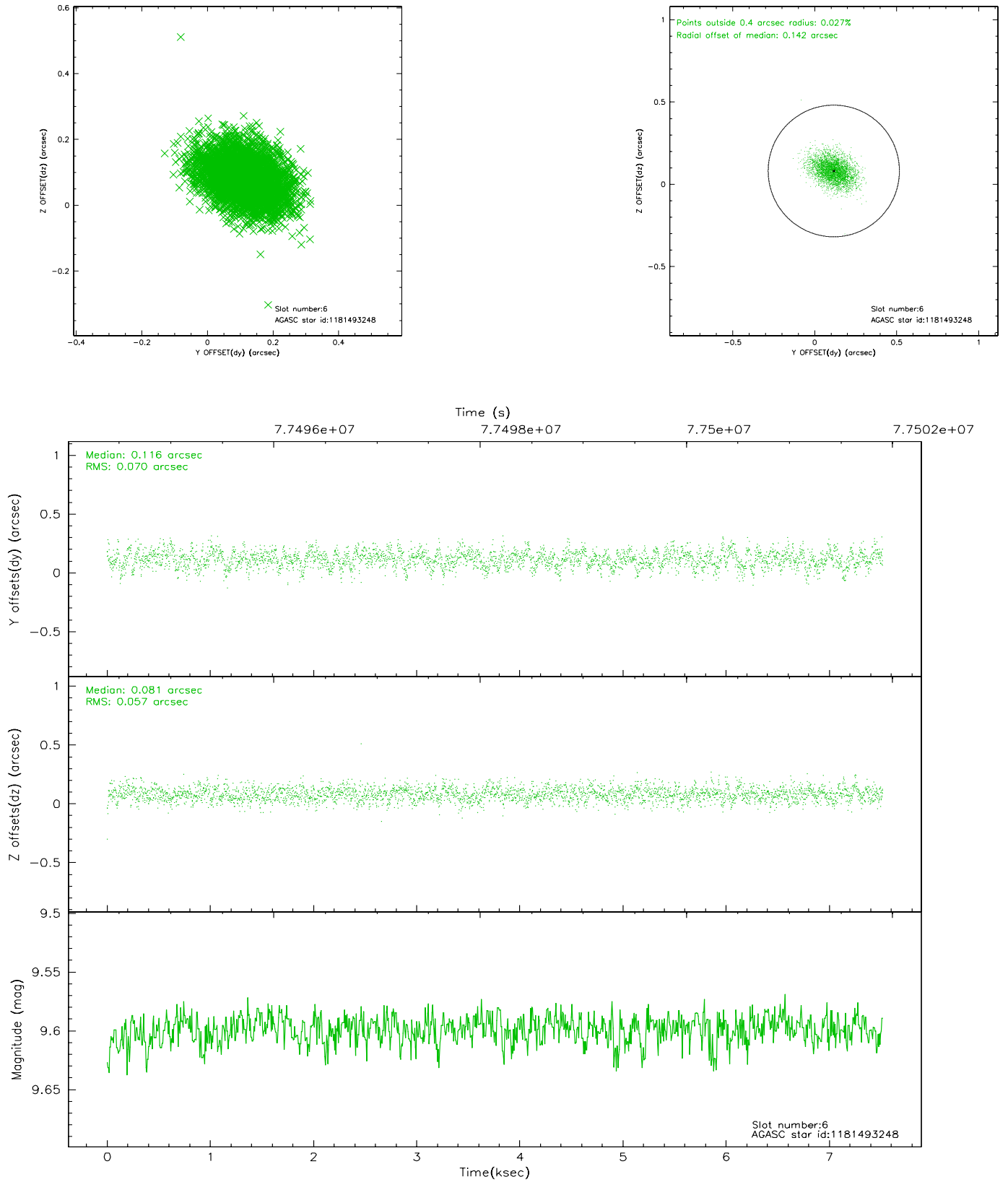
2.4.2 Slot 4



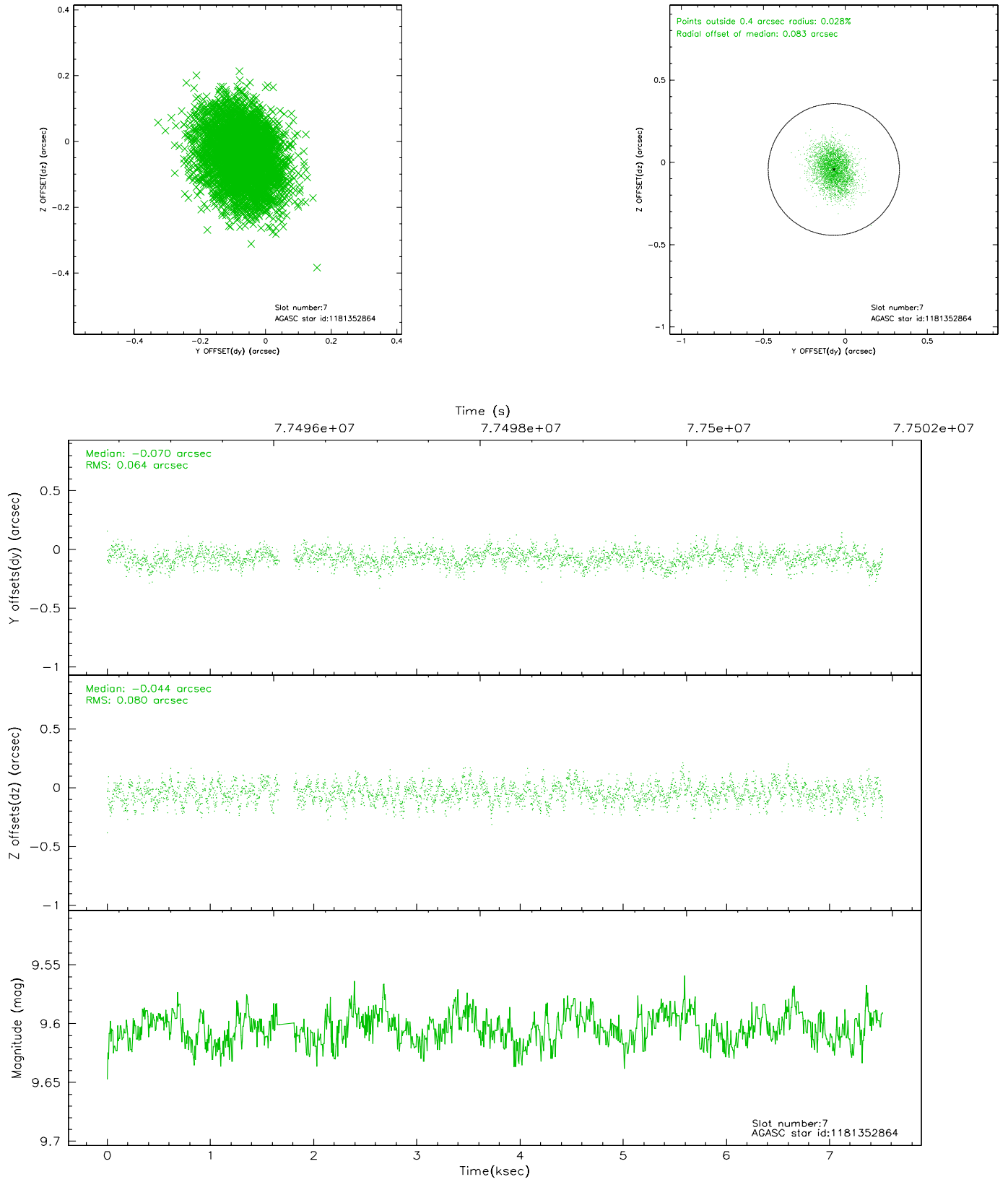
2.4.3 Slot 5



2.4.4 Slot 6

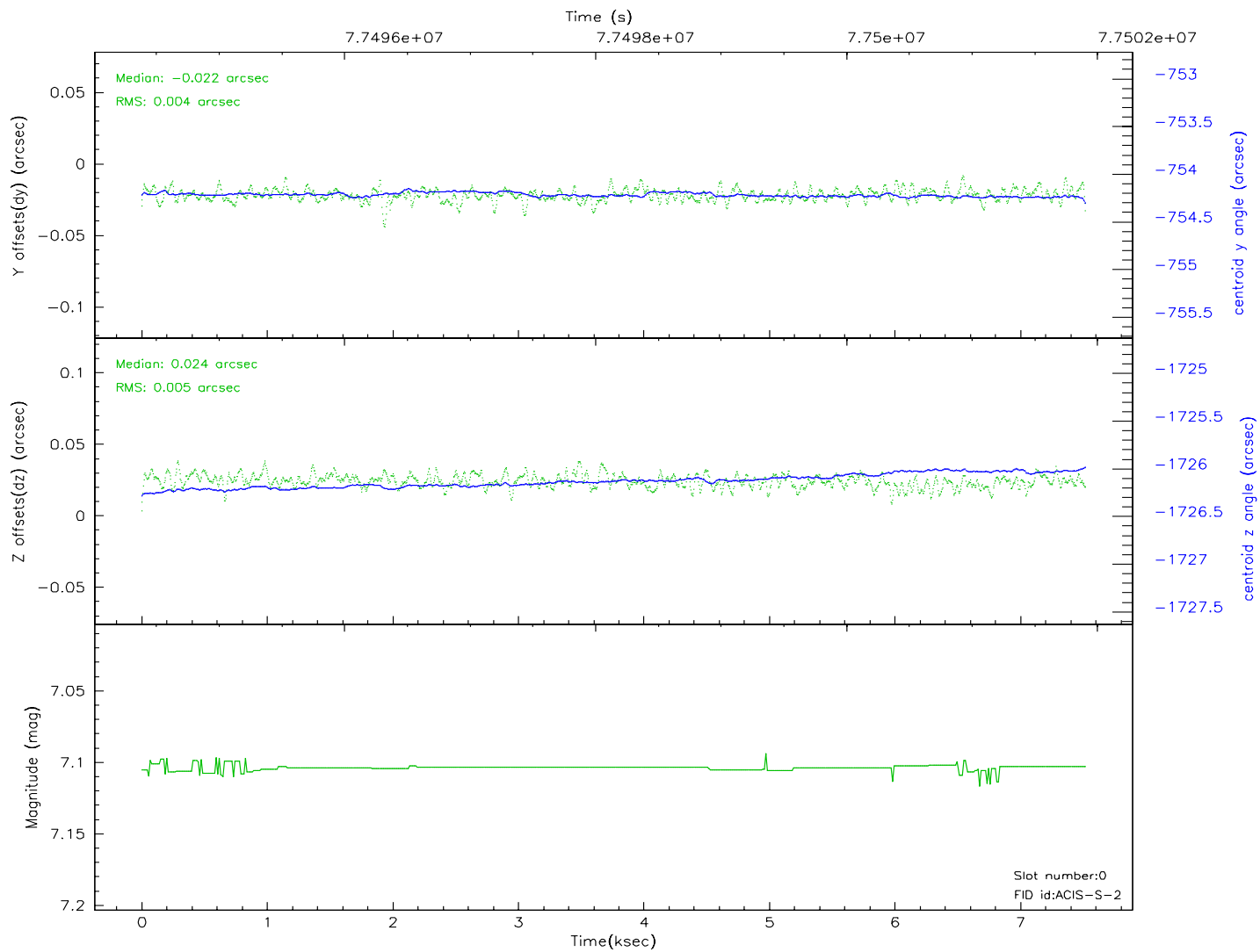
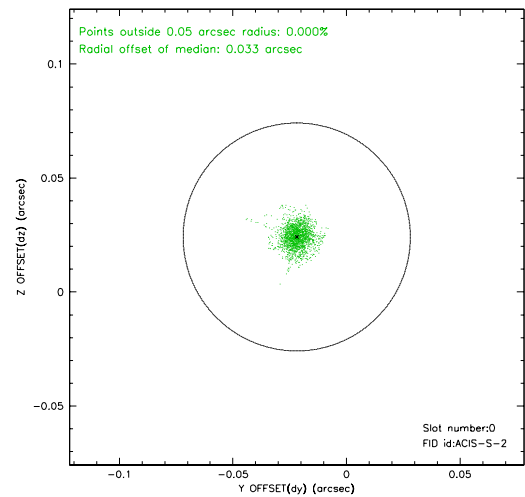
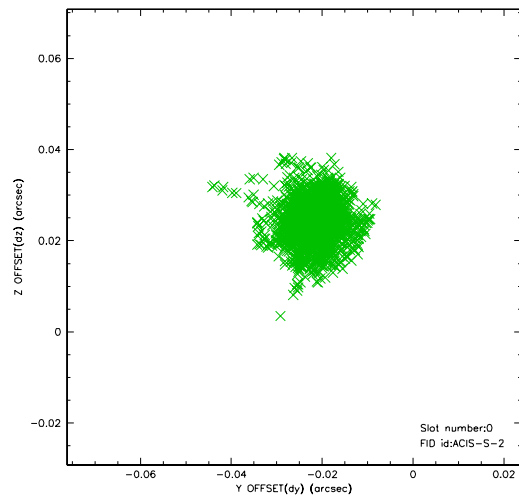


2.4.5 Slot 7

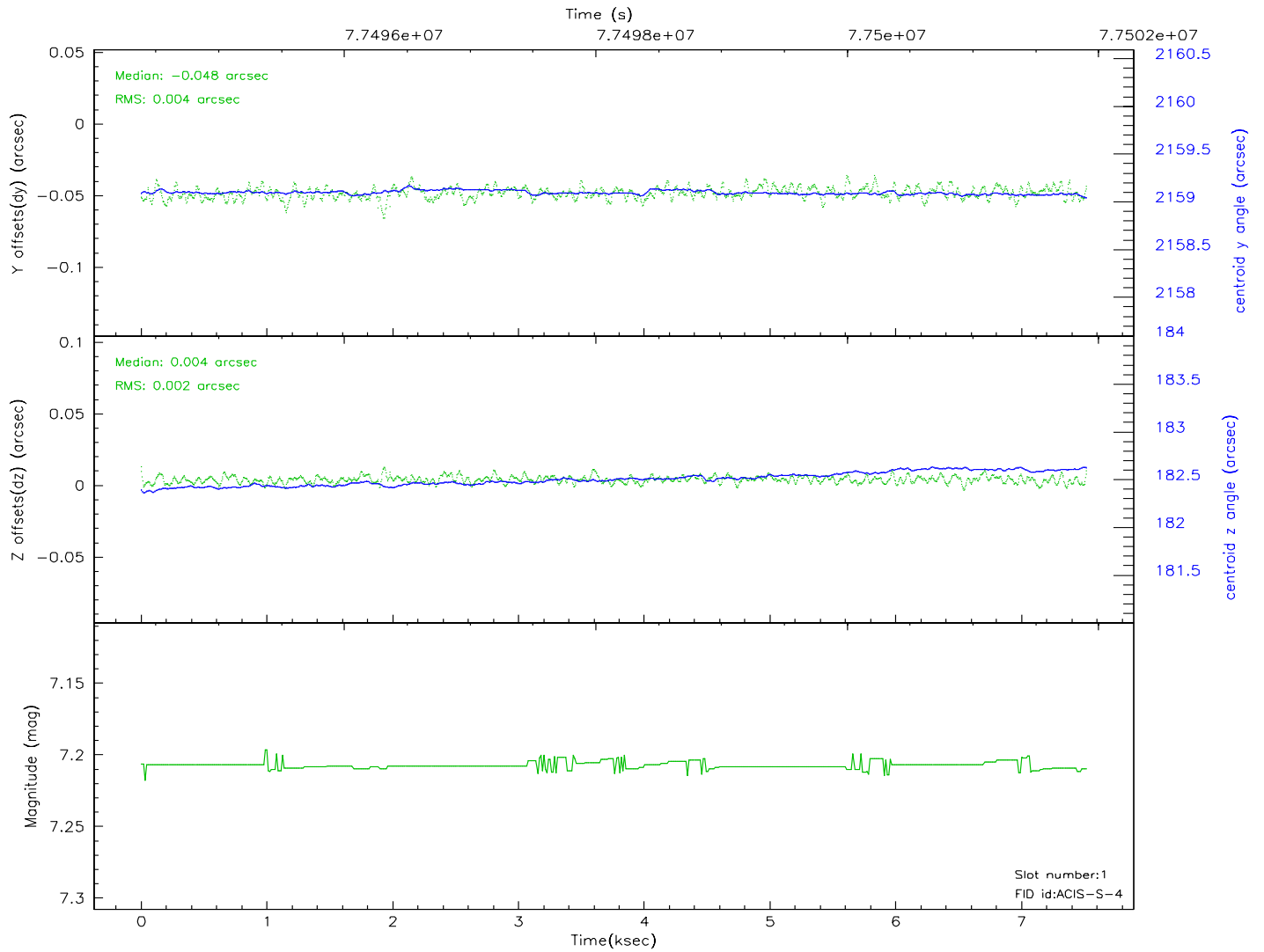
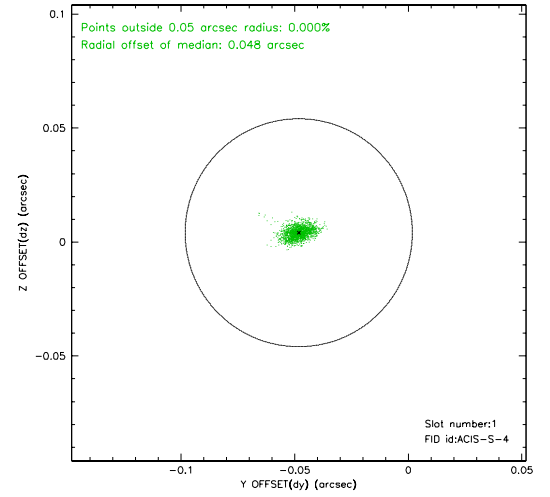
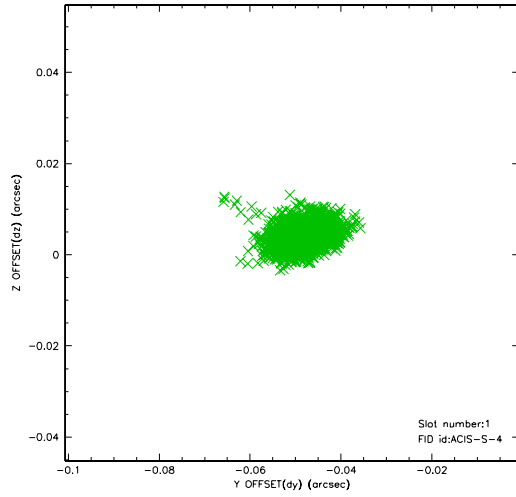


2.5 FID Slots

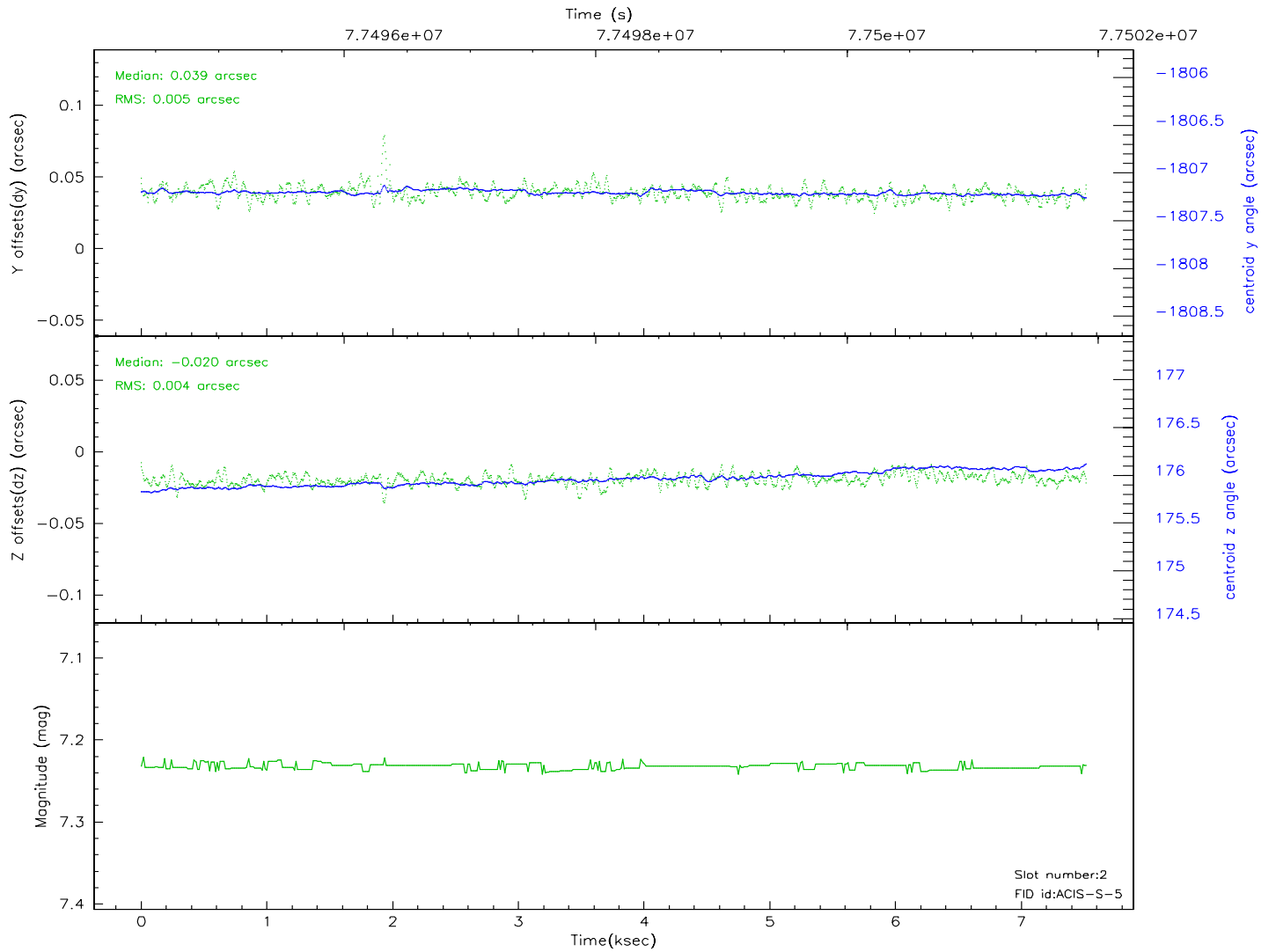
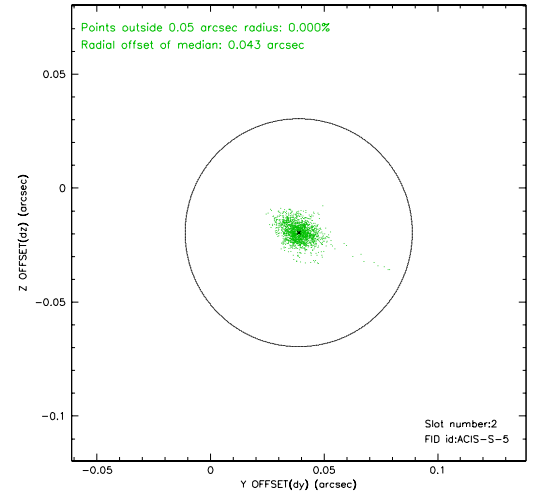
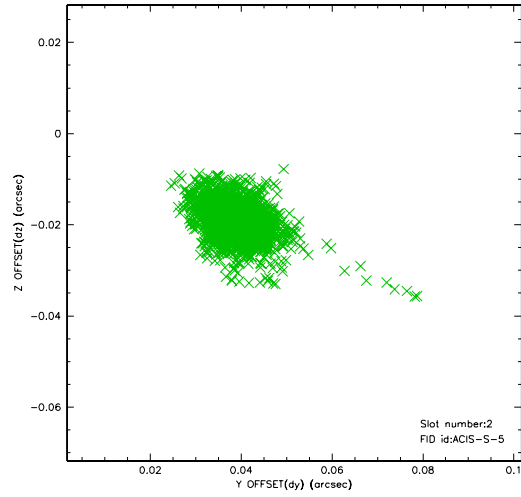
2.5.1 Slot 0



2.5.2 Slot 1



2.5.3 Slot 2

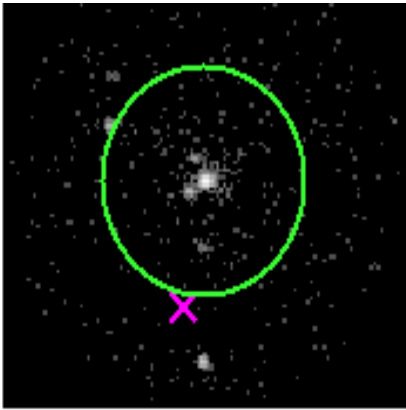


3 Gratings

3.1 HEG Arm



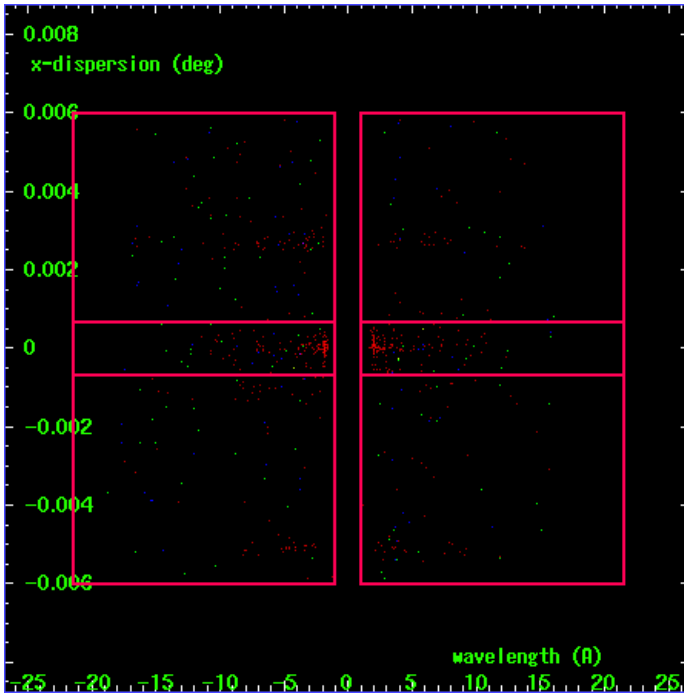
HEG Order Sort 123



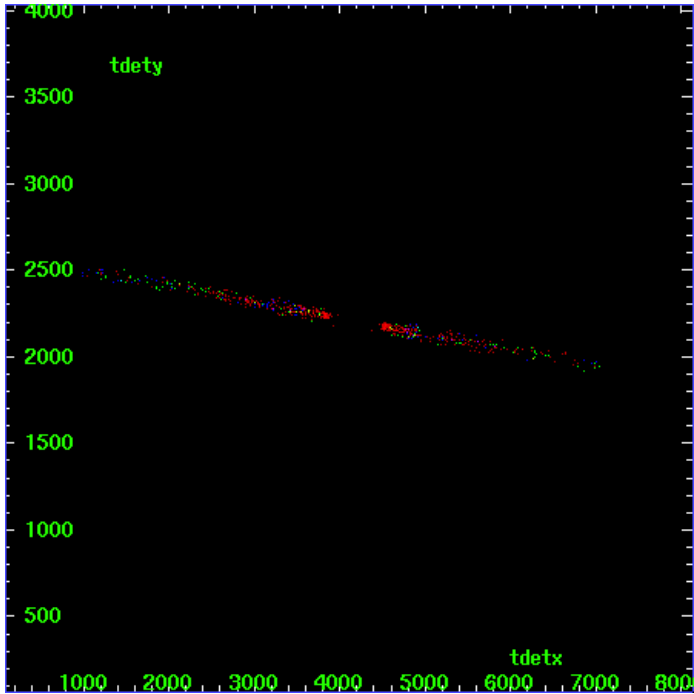
HEG Zero Order



HEG Order Sort ALL

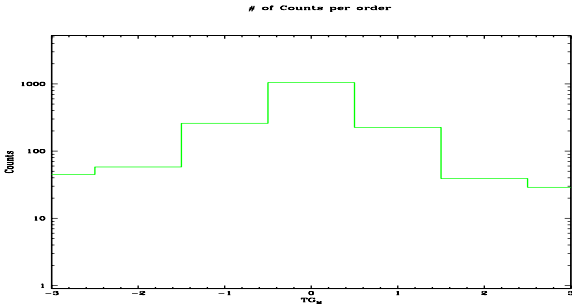


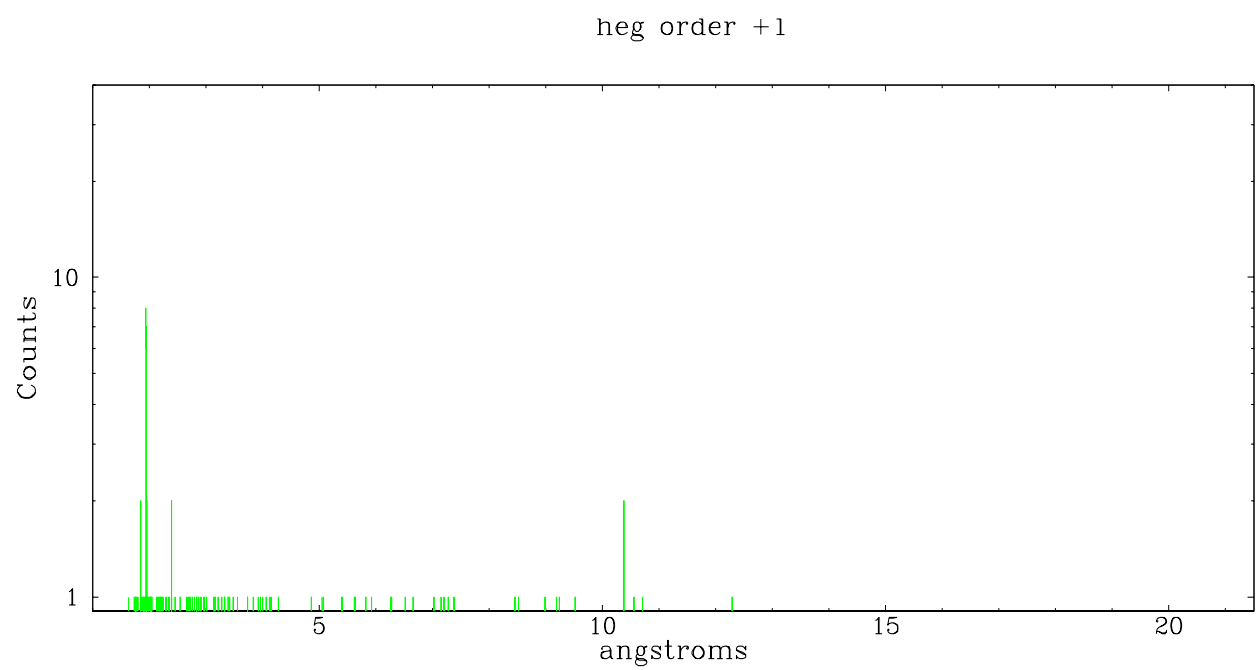
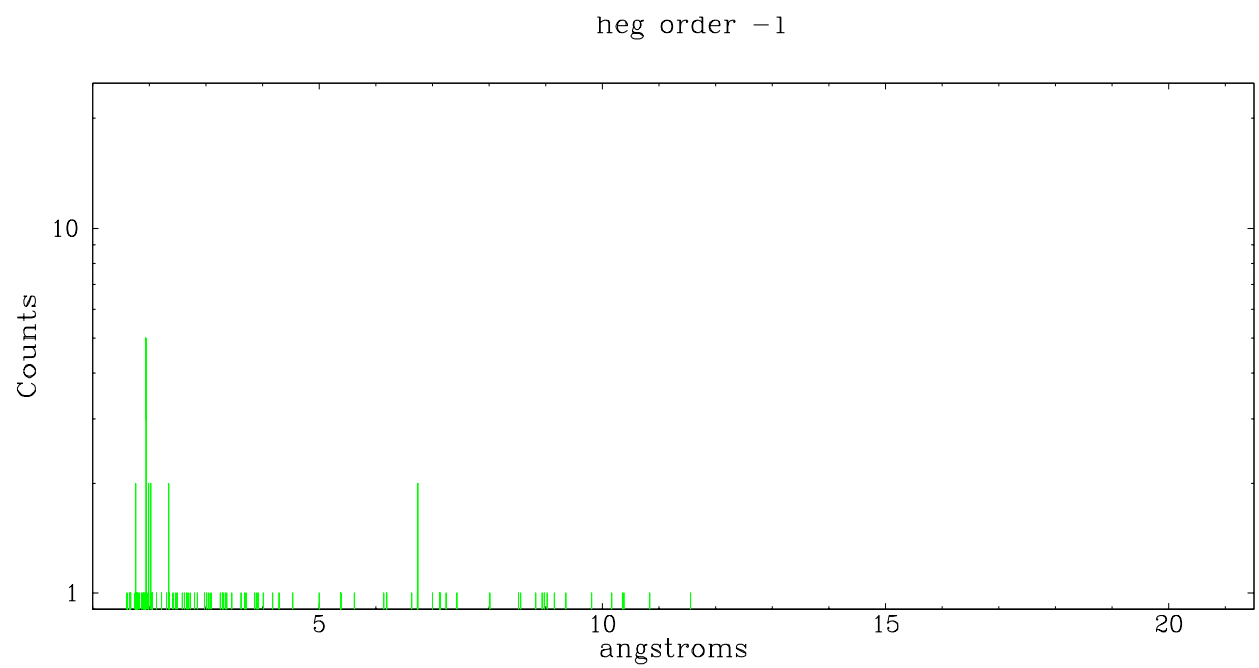
Spot Image HEG



Full Detector HEG

	order -3	order -2	order -1	order 0	order 1	order 2	order 3
Events	45	58	260	1045	225	39	29

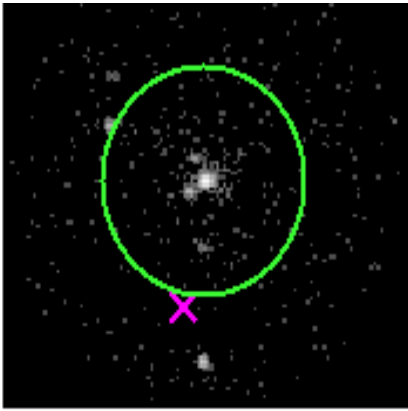




3.2 MEG Arm



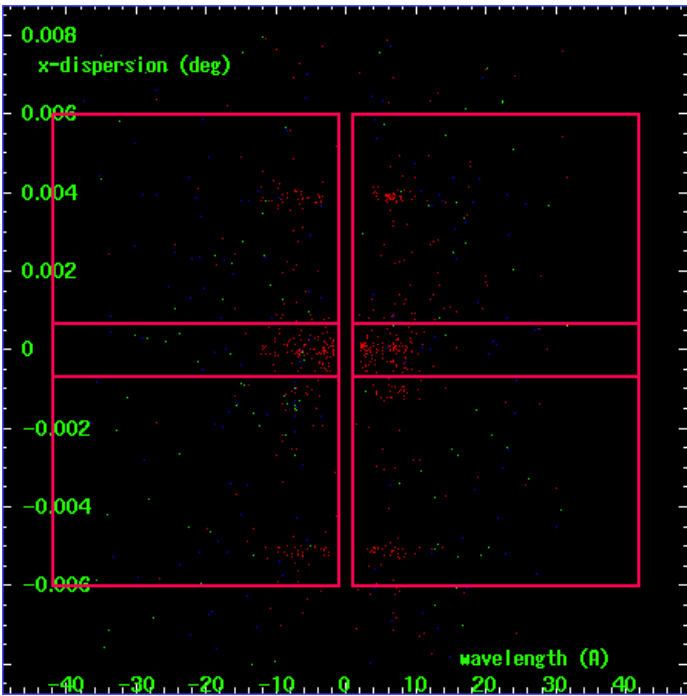
MEG Order Sort 123



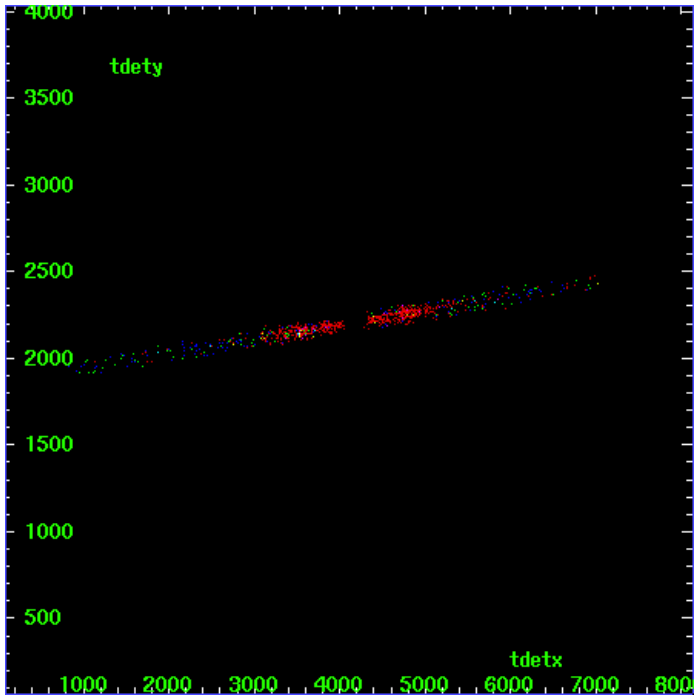
MEG Zero Order



MEG Order Sort ALL

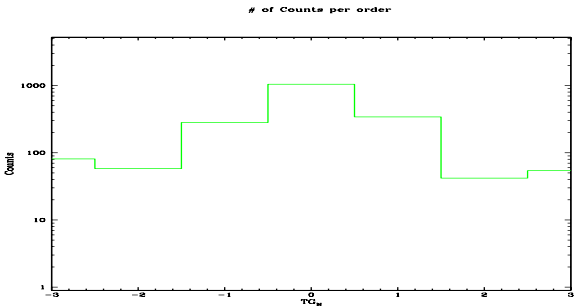


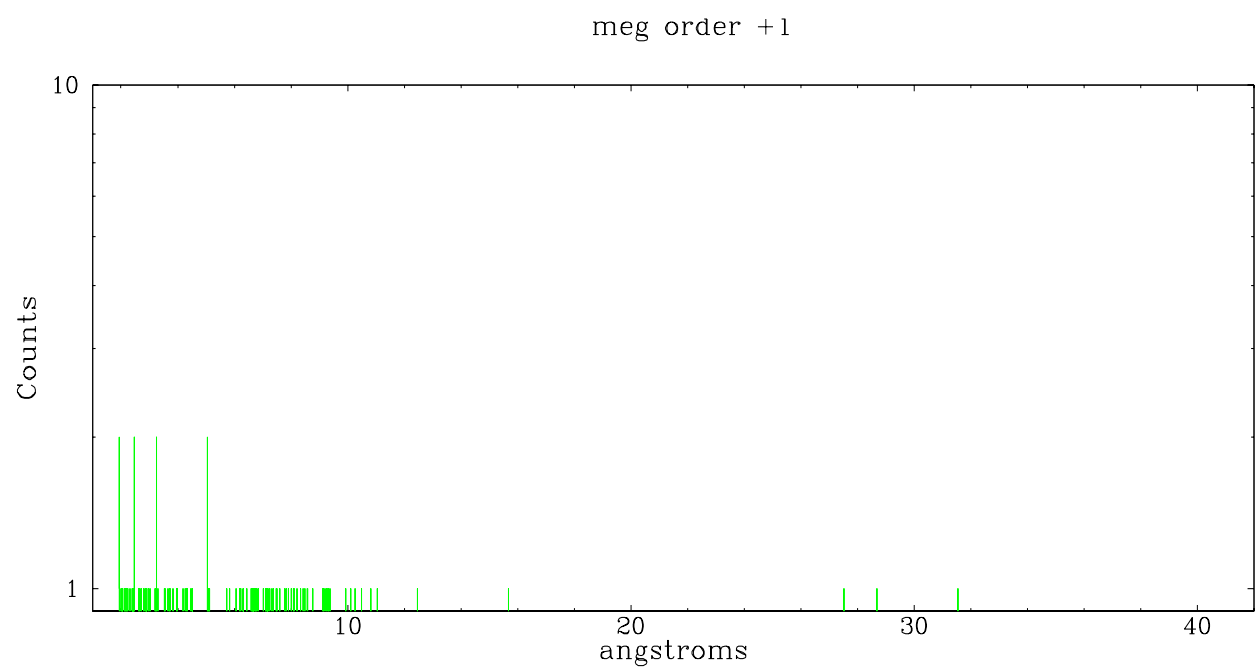
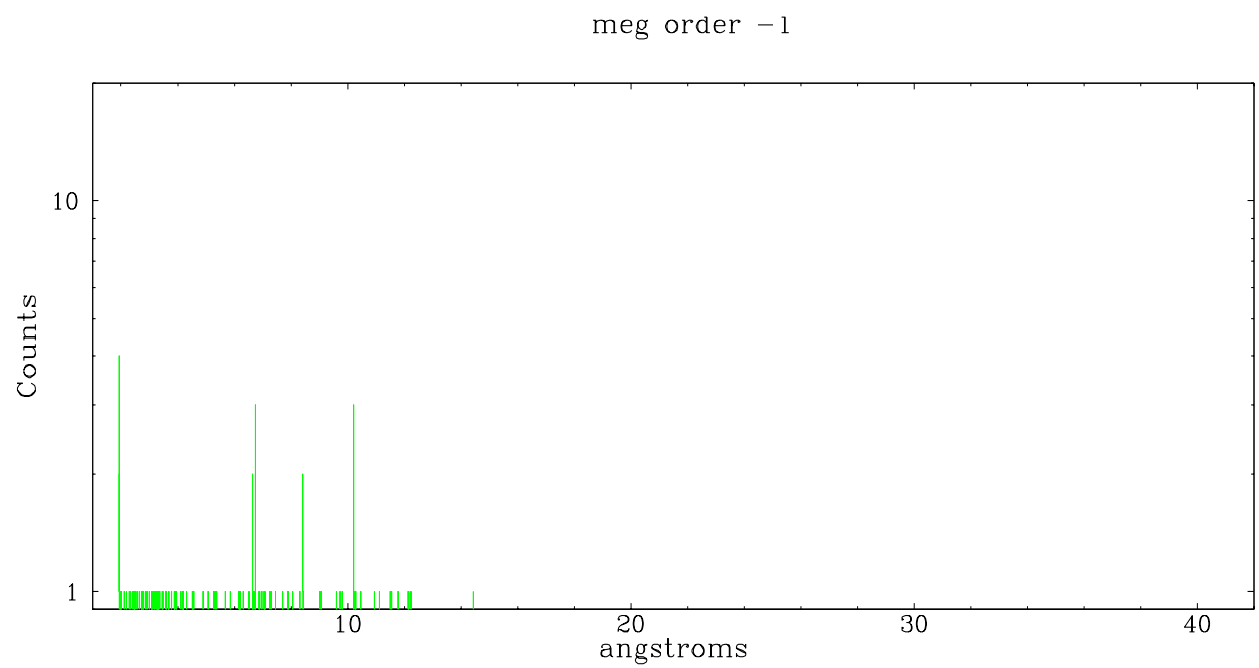
Spot Image MEG



Full Detector MEG

	order -3	order -2	order -1	order 0	order 1	order 2	order 3
Events	81	58	282	1045	342	42	54





A Summary

A.1 Status

V&V Scientist	Joy Nichols
V&V Date (YYYY-MM-DD)	2007.06.01
V&V Edition	1
V&V Disposition and Status	OK
V&V Charge Time	7.261

A.2 Comments

HETG grating was not fully inserted during this observation. The obsid was changed to 62877 when an onboard procedure was executed to complete the grating insertion. Obsid 62877 is a normal HETG observation, but this obsid may not be properly calibrated because the grating insertion was not complete.